

Survey of Mill Street  
Do Graff, Ohio

Mill St. - 60' Wide  
CH# 256 - 40' Wide

See FB 667 pg 95-96 for  
survey of Melhorn's Western Addition

See FB 490 pg 78 for  
survey of CH #256.

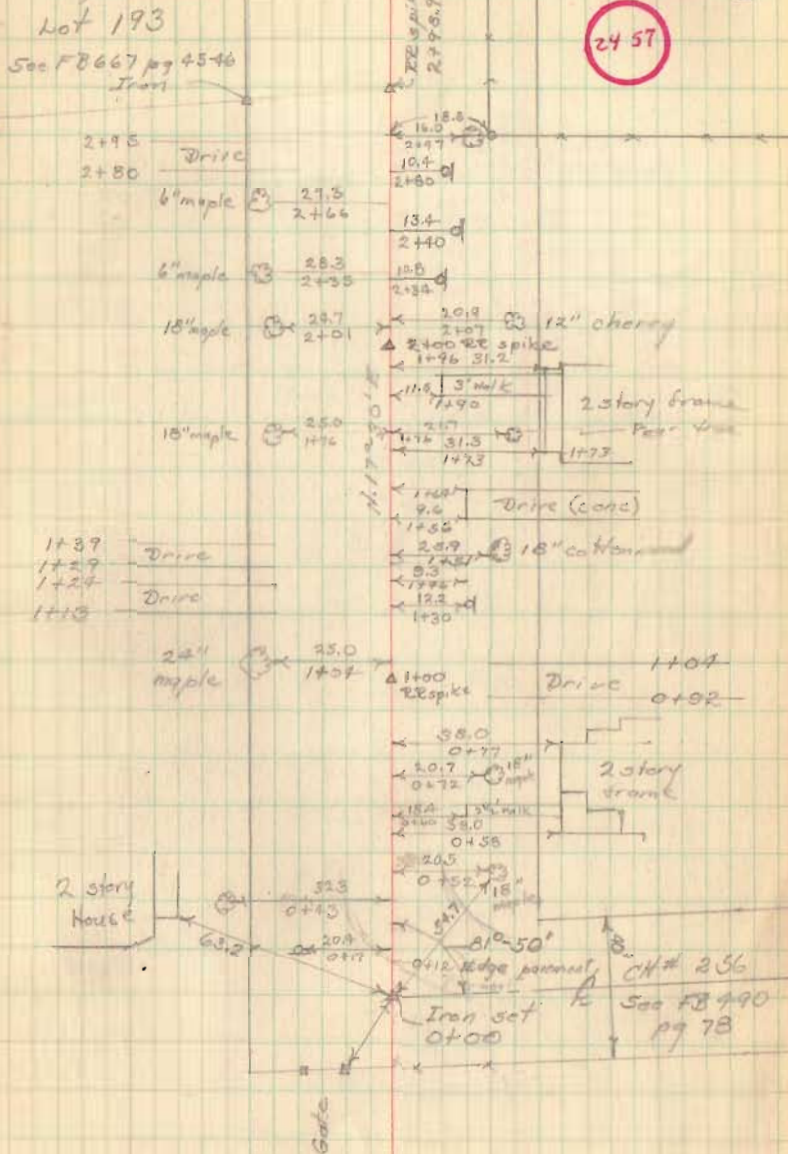
Δ - RR spike unless otherwise noted

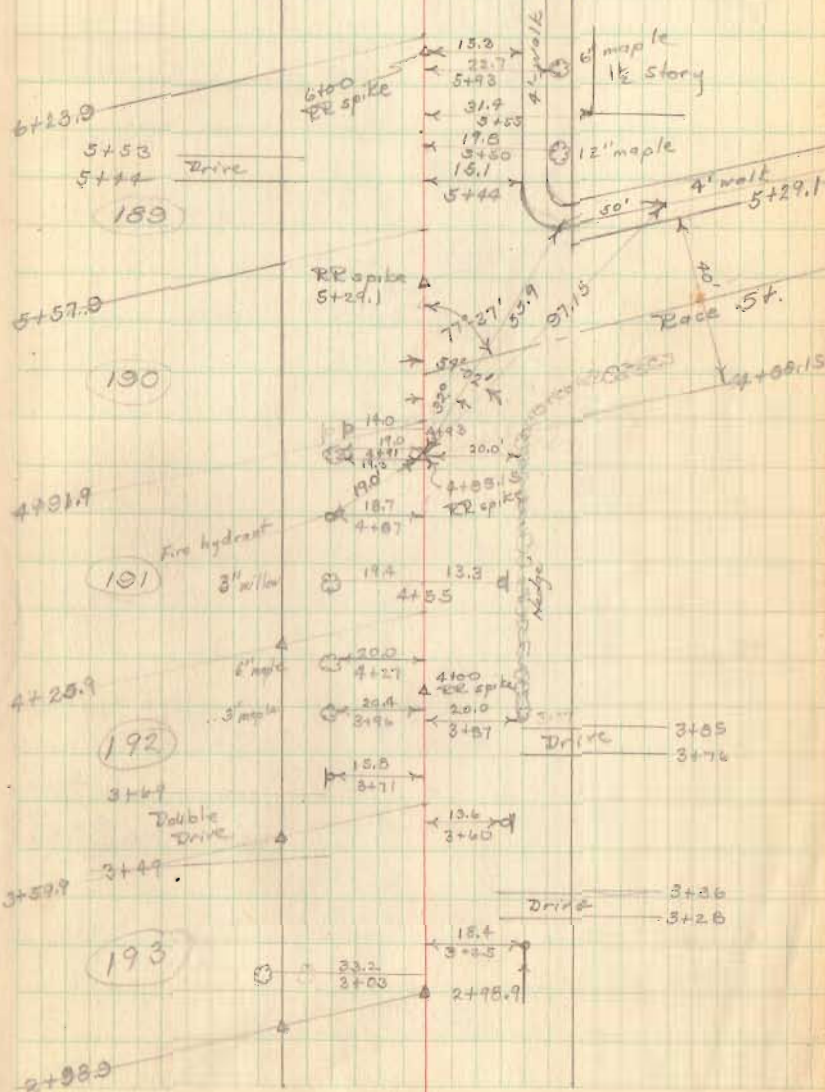
p - Utility pole

G. Keysor  
D. Dodson  
V. Detrick  
N. Keysor

Oct. 26, 1950

1

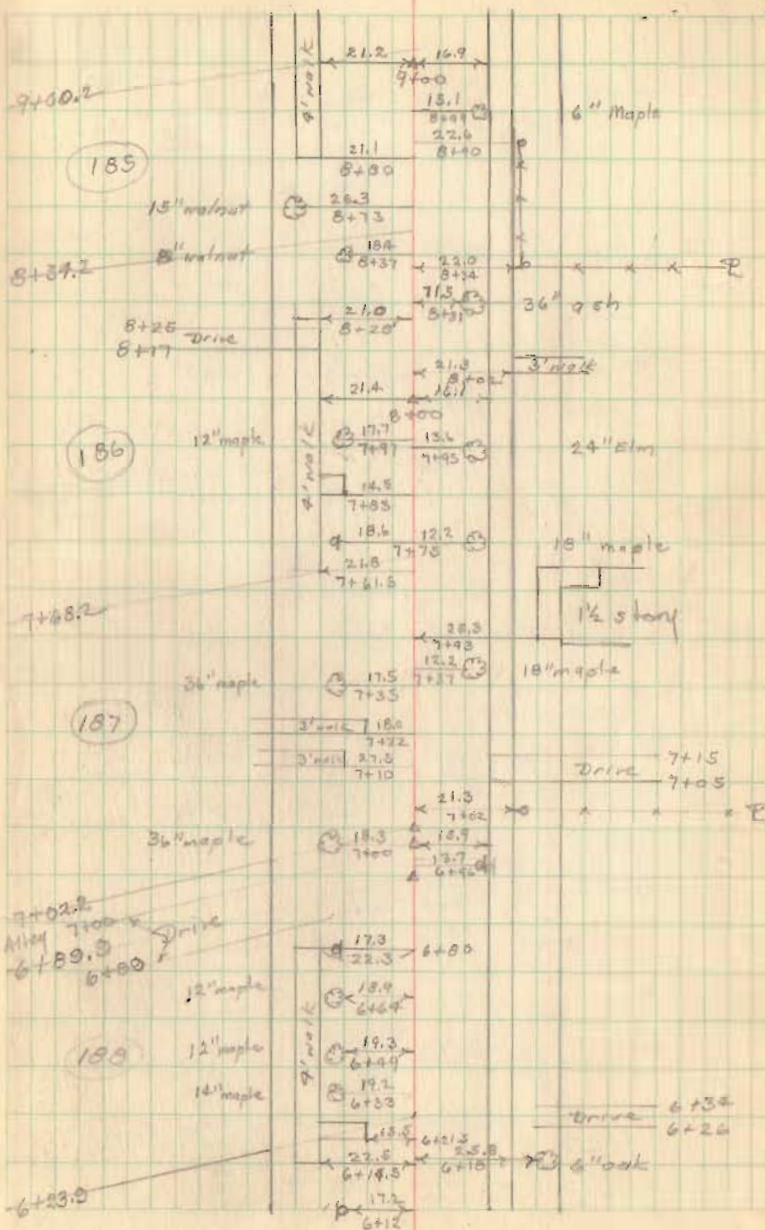




M. 11 St. (contd)

Oct. 26, 1950

3



99.9

7+07.2  
66  
7+73.2  
66  
8+39.2  
66  
9+05.2

7+02.2  
M.H. 7+00  
6+89.3  
6+00

188

12" maple

14" maple

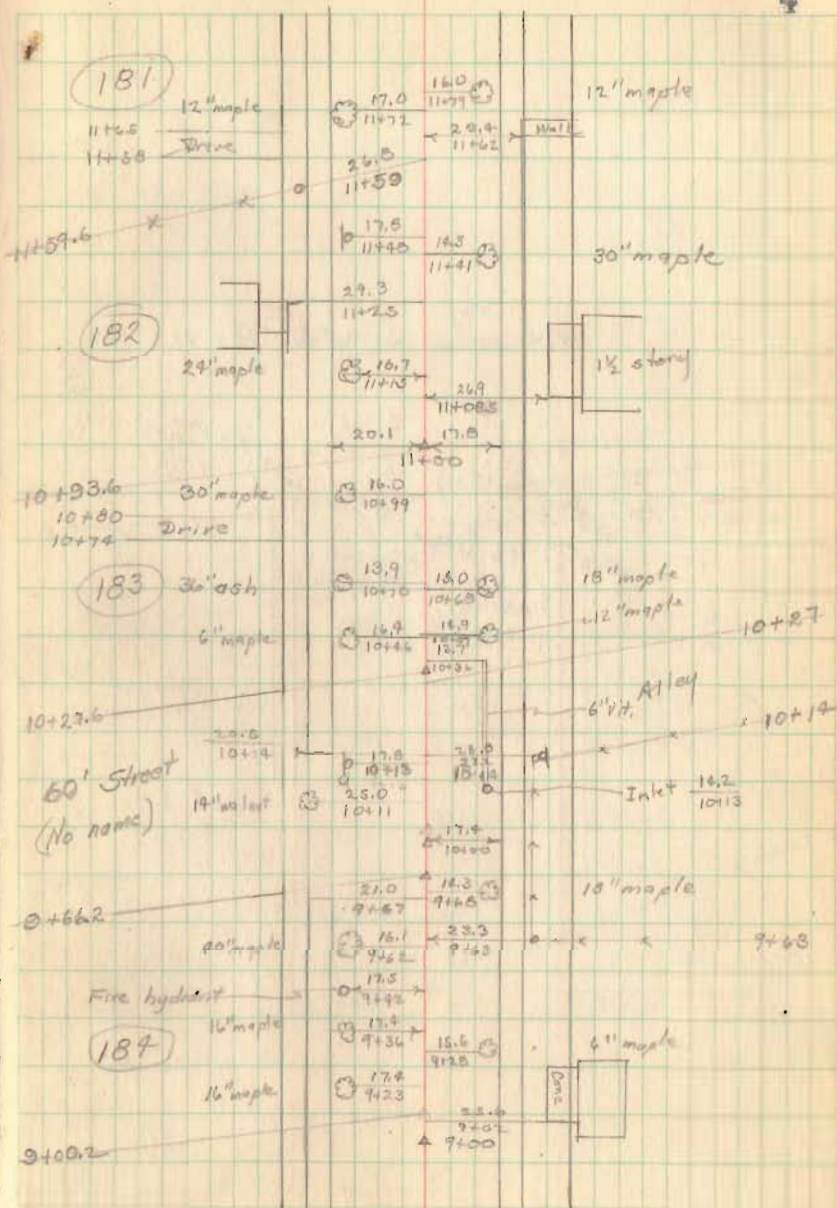
6+34  
Drive 6+26

6+23.0

M. 11 St. (contd)

Oct. 26, 1950

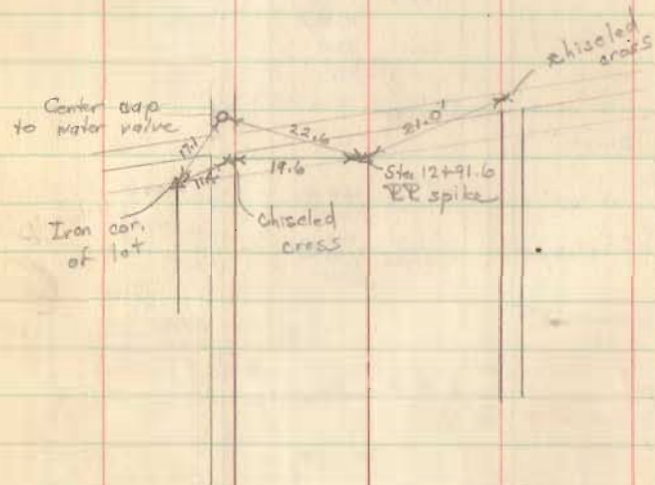
4



9+05.2  
 86  
 9+77.0  
 61.7  
 10+38.6  
 60  
 10+78.6  
 66  
 11+69.6  
 66  
 12+30.6  
 66  
 12+96.6

Mill St. (contd)

Witnesses to Sta 12+91.6

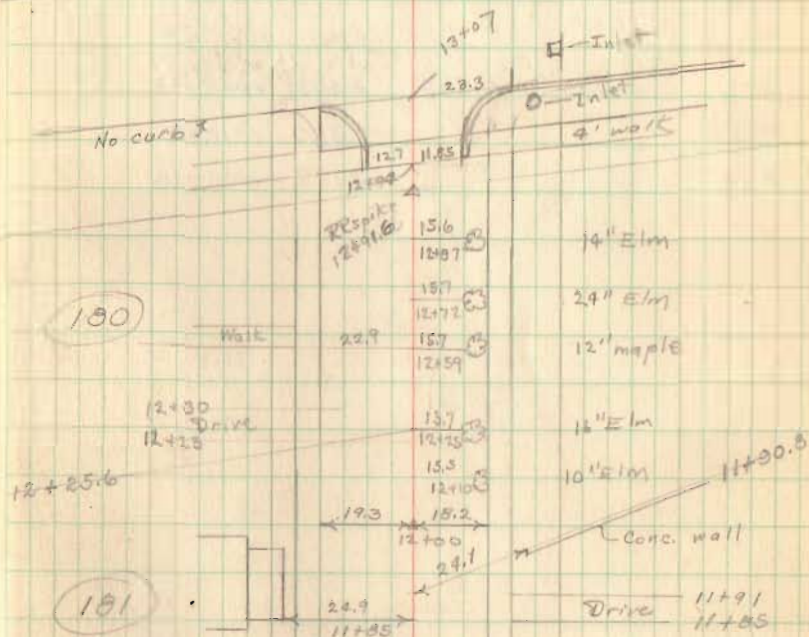


Oct. 26, 1950

5

$\frac{97}{13}$   
7

Miami St.



180

181

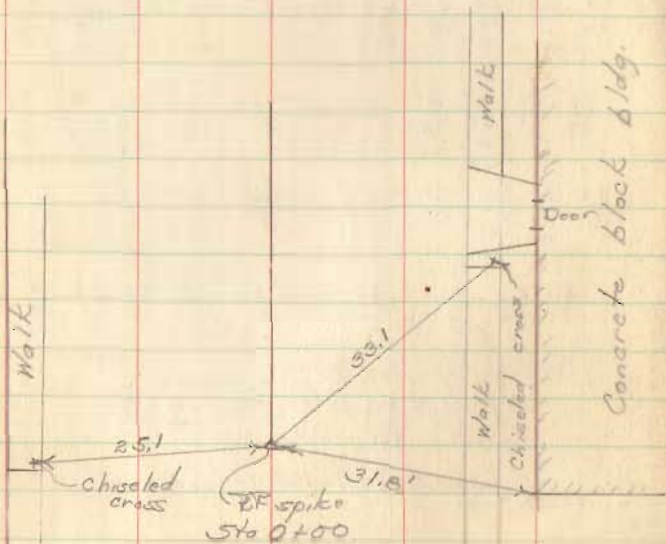
11+59.6

De Graff  
Boggs St.

60' Wide

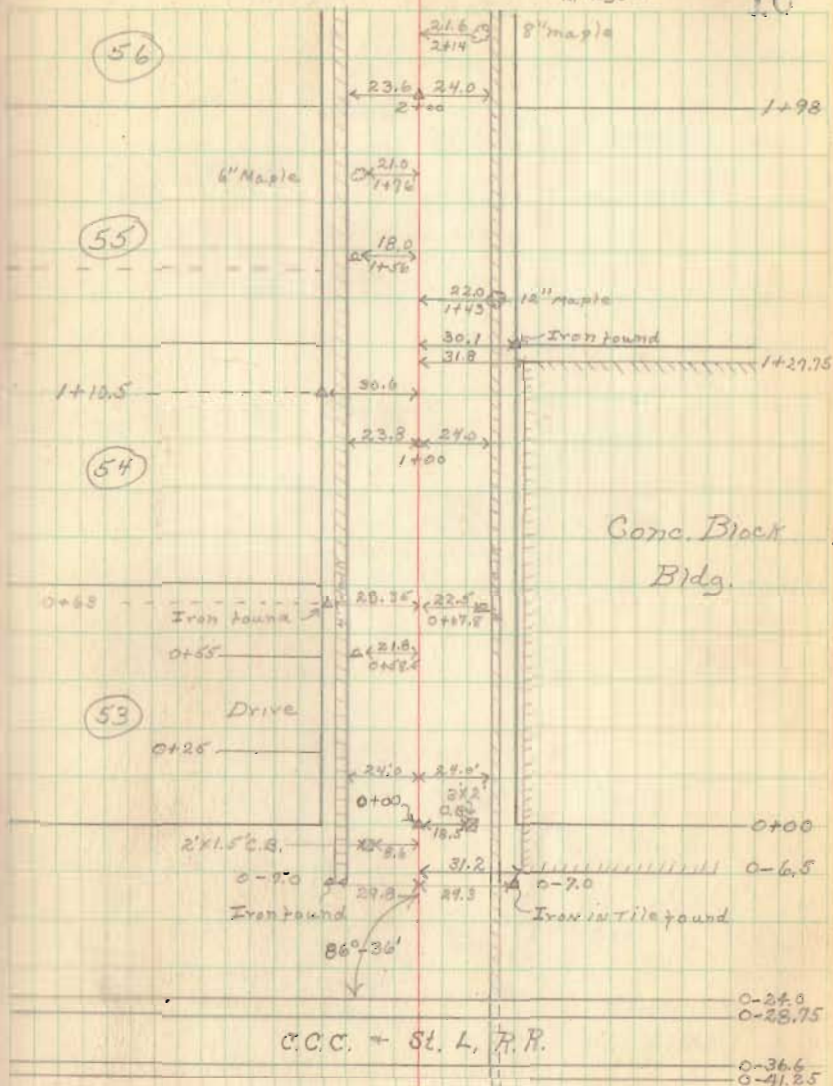
△ R.R. spikes set, unless otherwise noted  
□ Utility poles

Witnesses to Sta 0+00



C. Keyser  
D. Dodson  
V. Debrault  
M. Keyser

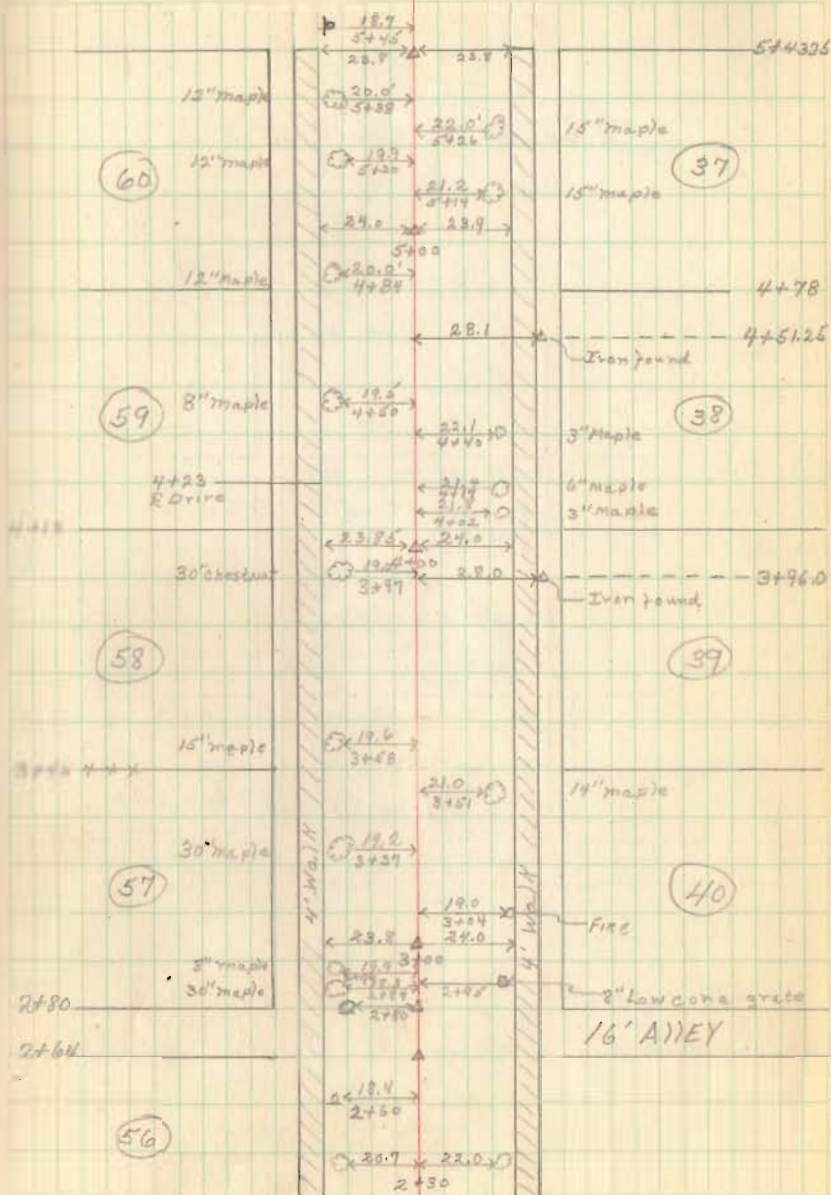
10



26 92

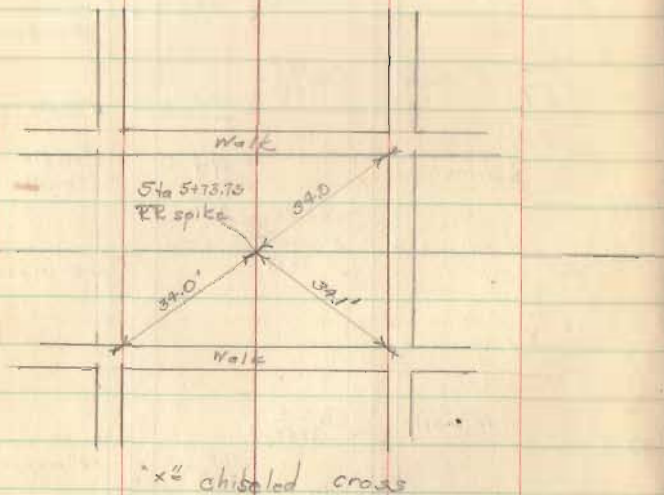
De Graff  
 Boggs St. Cont'd)

11

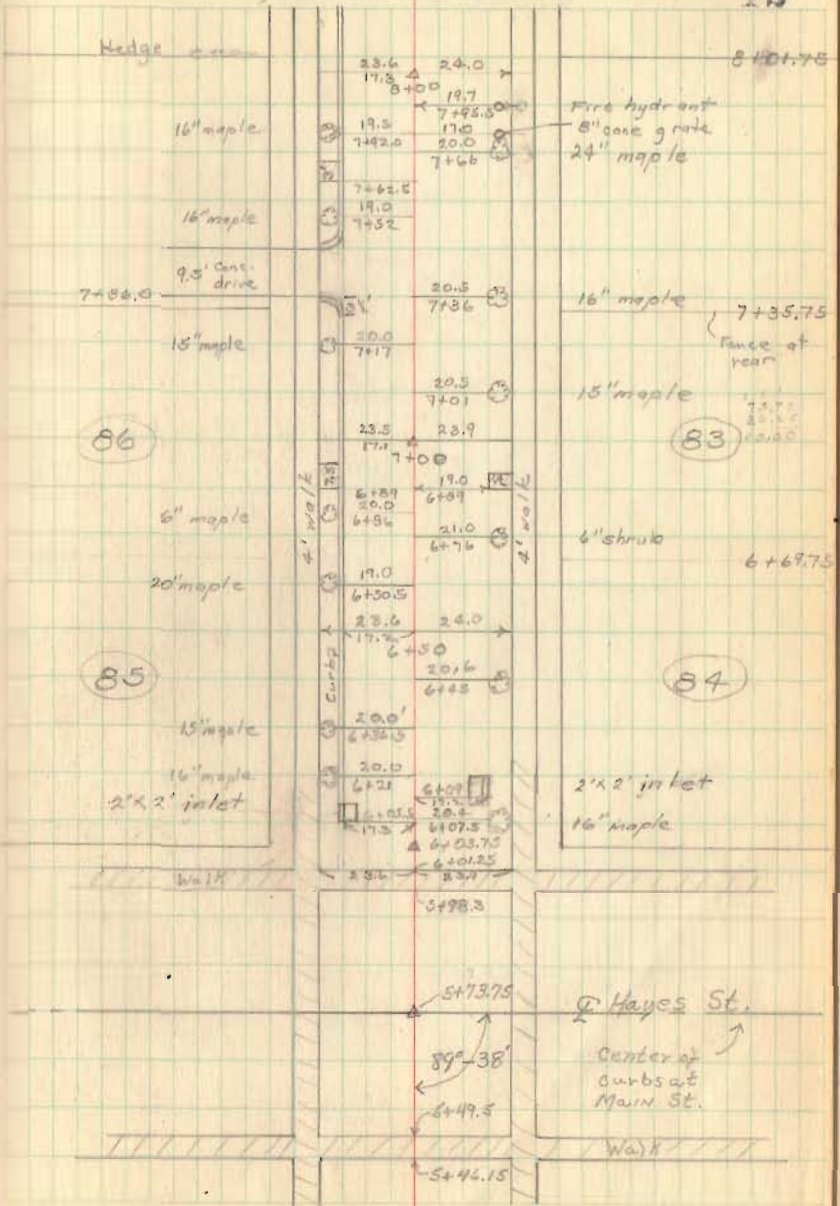


Joggs St. (Contd)

Nitassas to Sta. 5+73.75



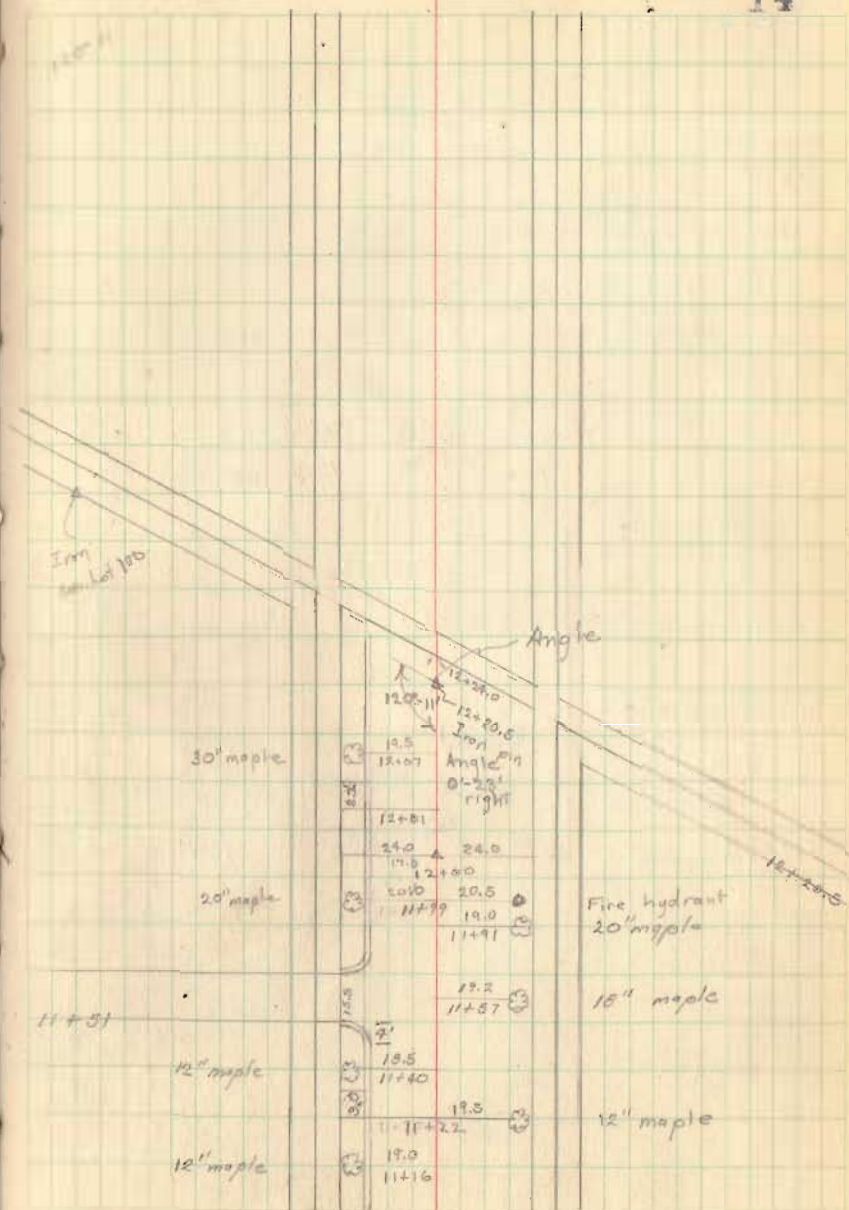
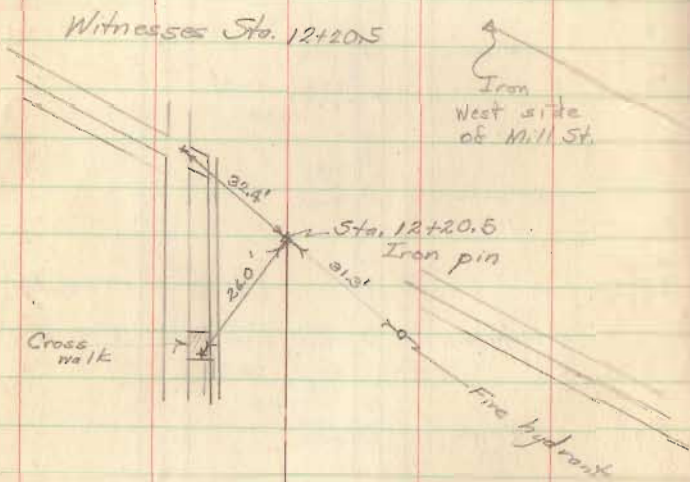
Nov. 6, 1950  
 C. Keyser V. Detrick  
 D. Wilson N. Keyser







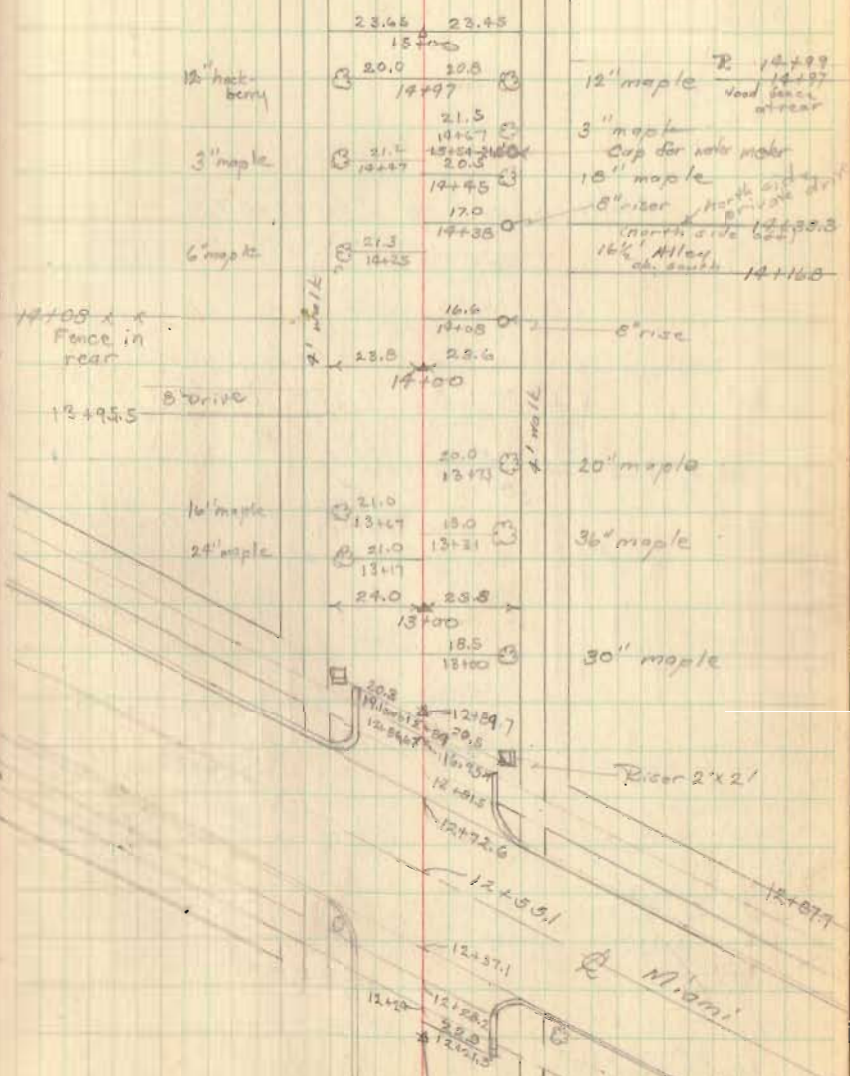
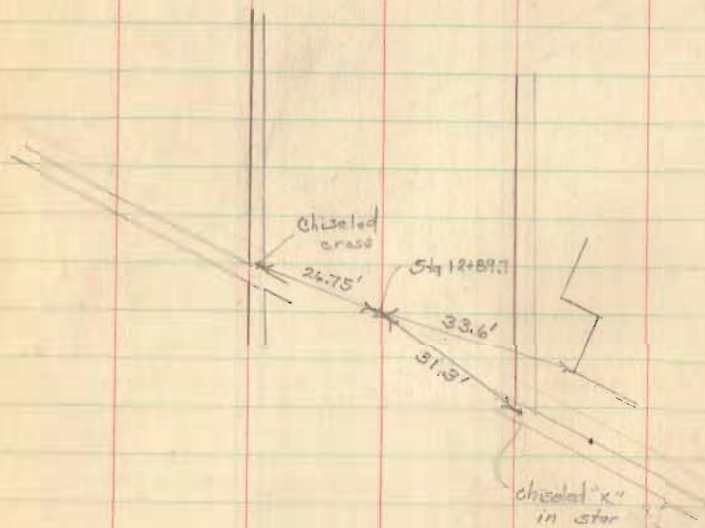
Baggs St. (contd)



Beggs St (contd)

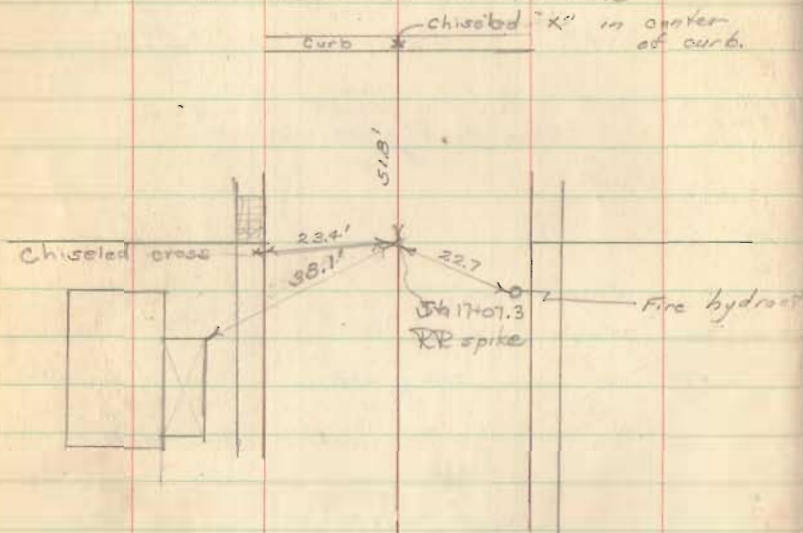
55  
30  
8

N. masses to S6. 12+89.7



Boggs St. (cont'd)

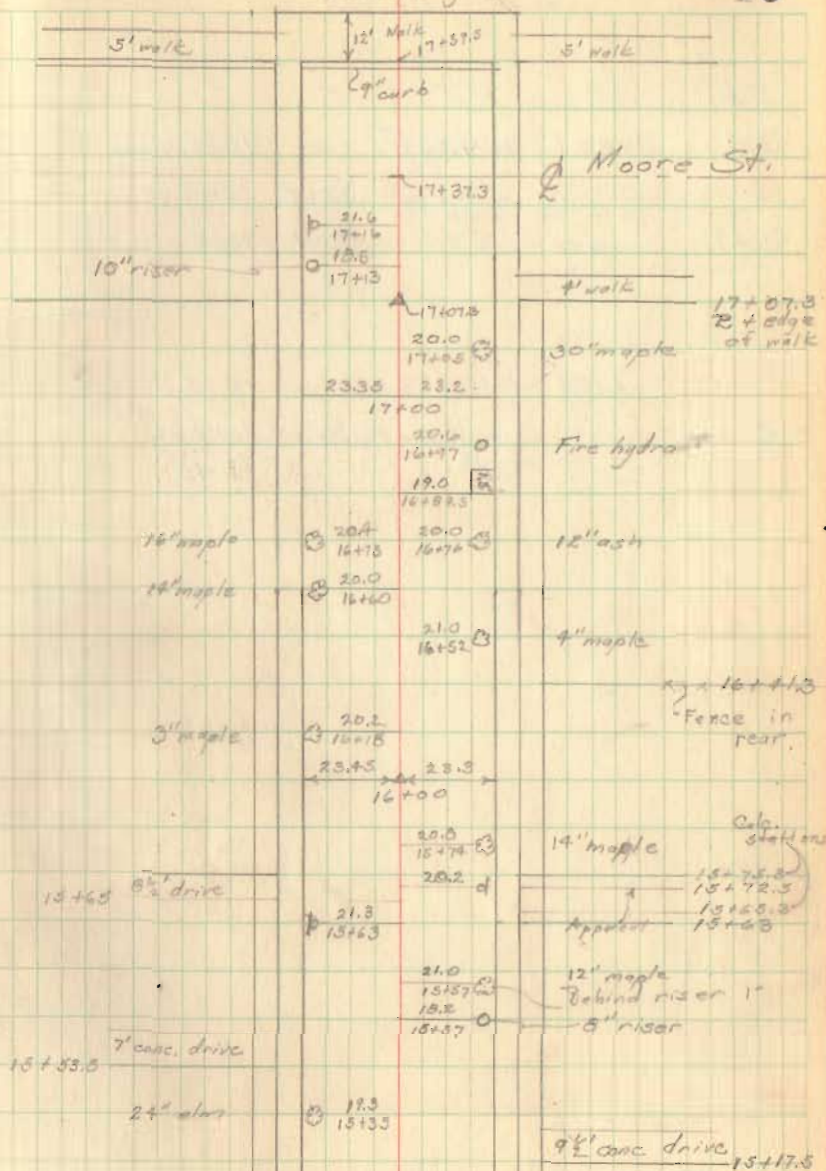
Witnesses to St 17+07.3



Nov. 7, 1950

School yard

16



Survey for  
Huntsville School Board  
and  
The Village Council of Huntsville

2086

Huntsville, VMS 9904  
McArthur Twp, Logan Co., Ohio.

INDEXED ON MAP

Note:-

See FB 579 pg 64 for survey  
of C.H. # 222.

See FB 598 pg 33 for survey  
of S.H. # 579 (Route 274)  
formerly CH# 22.

See F.B. 14A pg 42-3 for survey  
of school lot

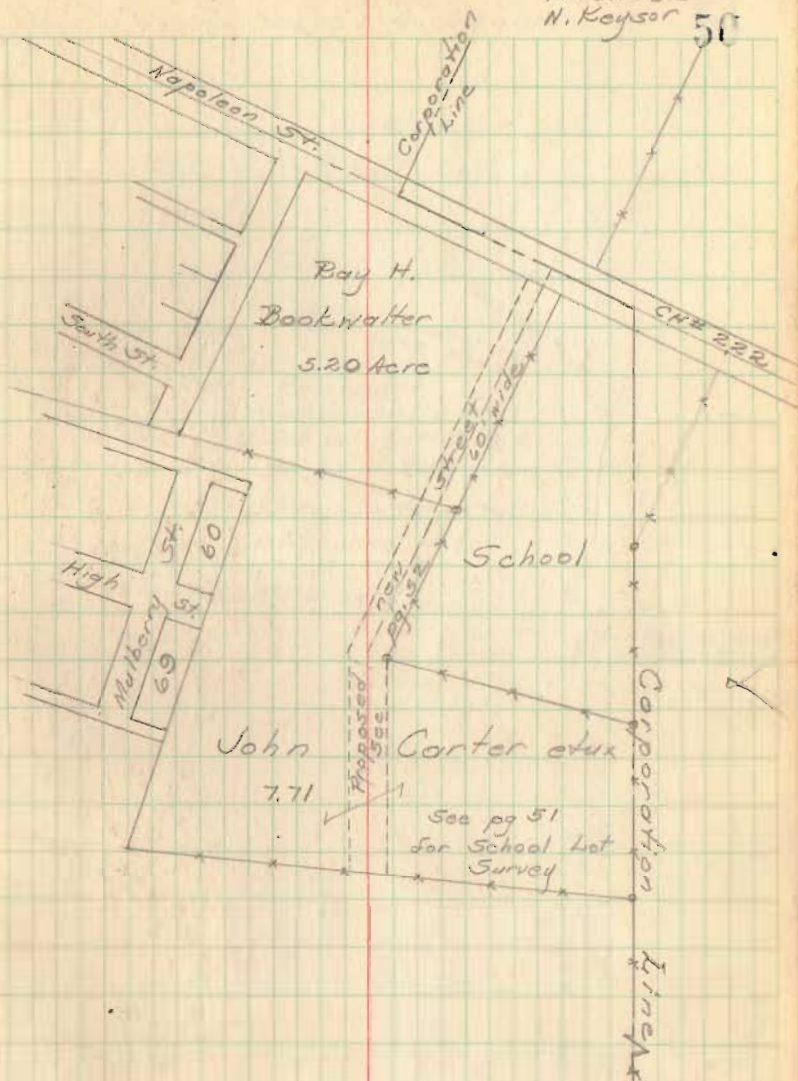
See F.B. 300 x pg 74-5 for survey  
of John Carter (formerly Rude's  
9.98 Acres)

2088

Jan. 22, 1951

C. Keyser  
V. Detrick  
N. Keyser

50



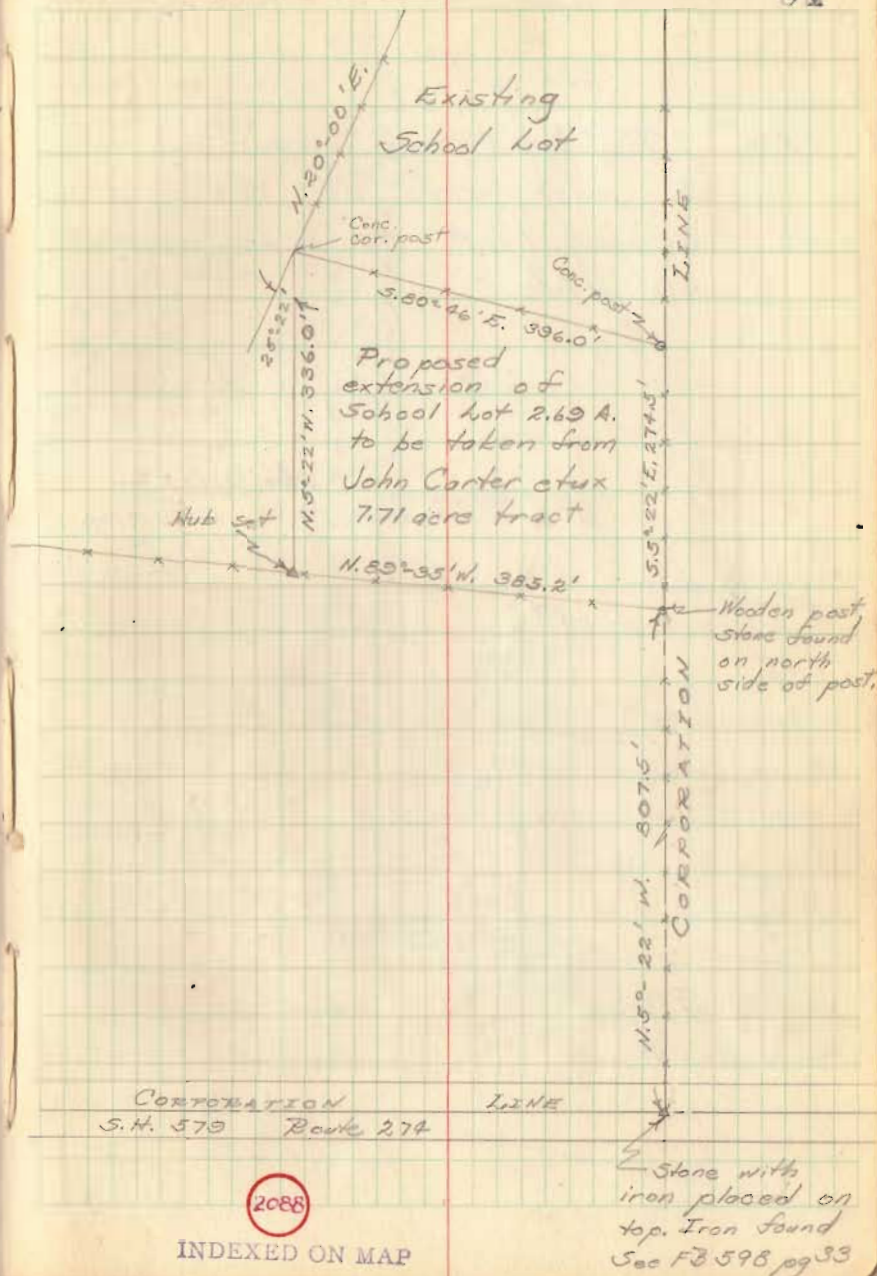
Corporation  
S.H. 579

Line 7  
Route 274

Survey for  
Huntsville School Board (contd)

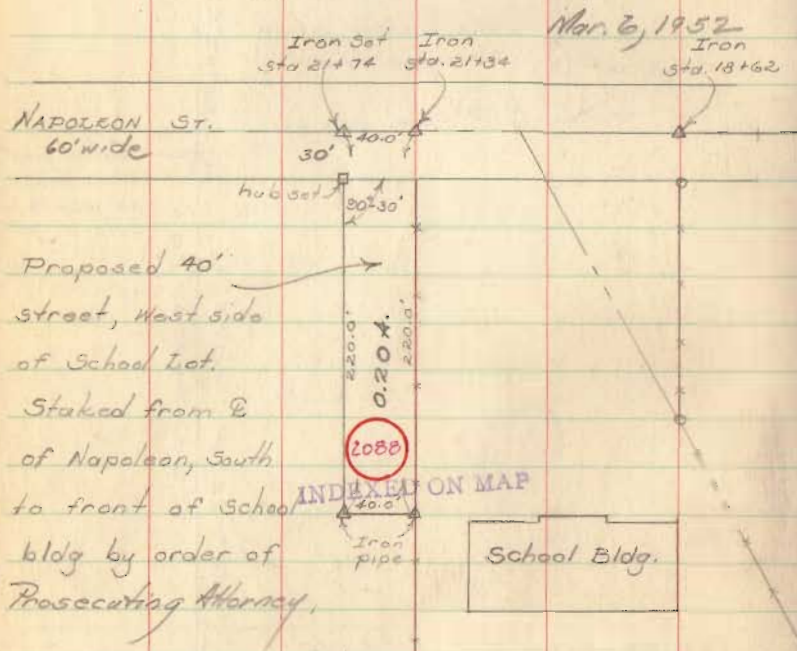
Jan. 22, 1951

51

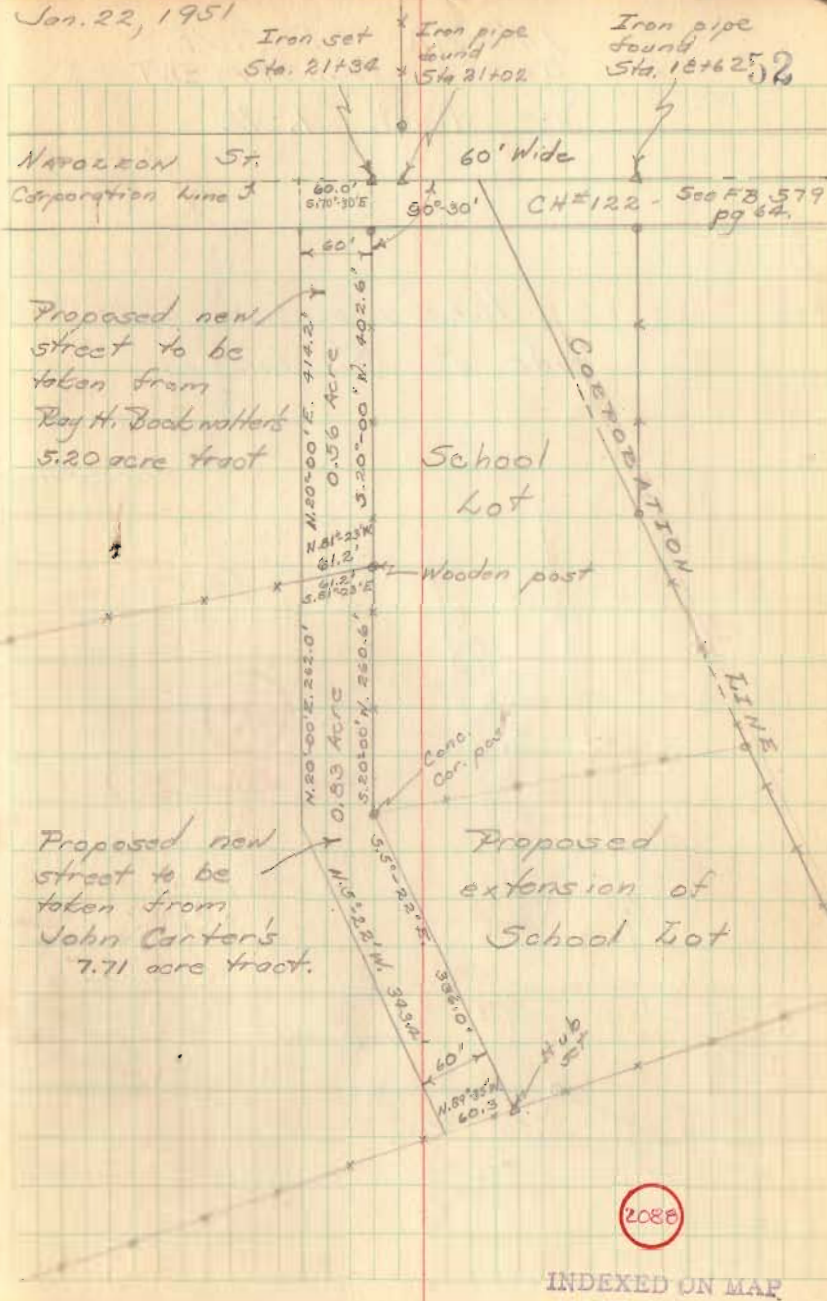


Survey for  
The Village Council of Huntsville (contd)

Proposed new street on  
the west side of the  
school lot to be  
60' wide.

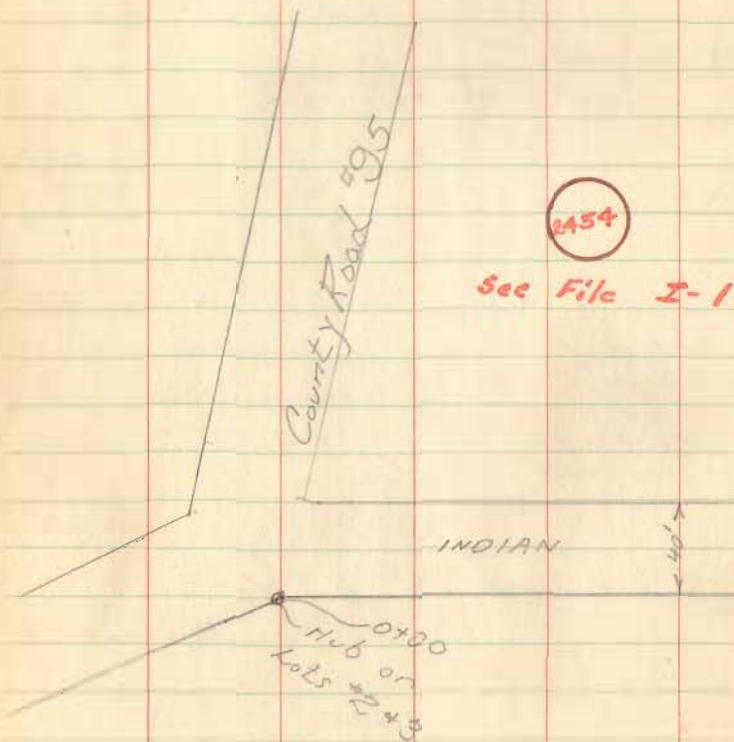


Jan. 22, 1951



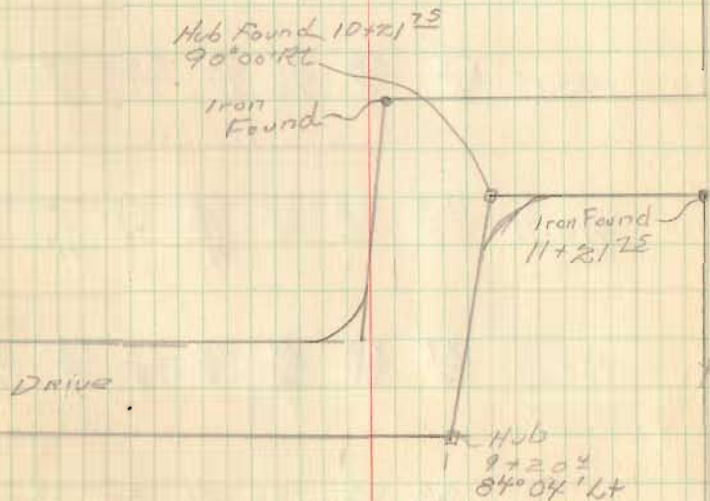
INDIAN DRIVE  
BERG'S ALLOTMENT  
See sheet "K-7B"

Hubs place on South  
Side of  $\frac{9}{16}$  Line.



July 23, 51

Shirley  
Doddson  
Derrick  
South  
Ritzell 53





Survey of C.H. #181  
at C.H. #1

CH #181 - 40' wide

CH #1 - 60' wide

Cutoff acquired 1913 - 33' wide  
N. of RR fence

Note:-

See FB 49 pg 42

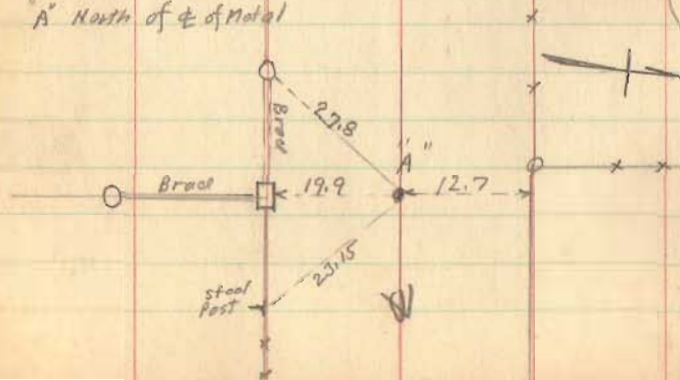
FB 598 pg 25 (CH #1)

FB 584 pg 35-36

Stone "A" Found June 16, 1956  
New Witnesses

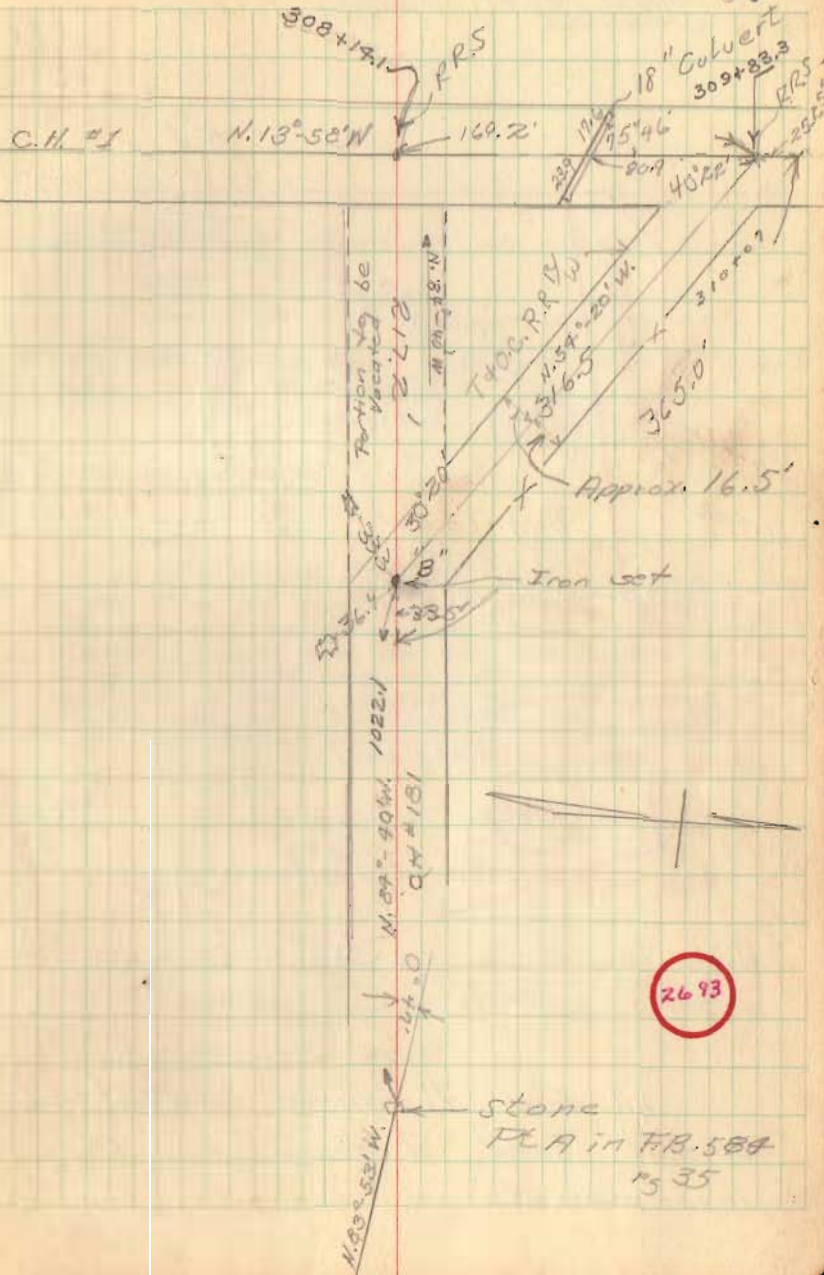
Placed Pipe over Stone  
F.F. Wright  
G.W. Wilges

"A" North of  $\frac{1}{4}$  of Notch



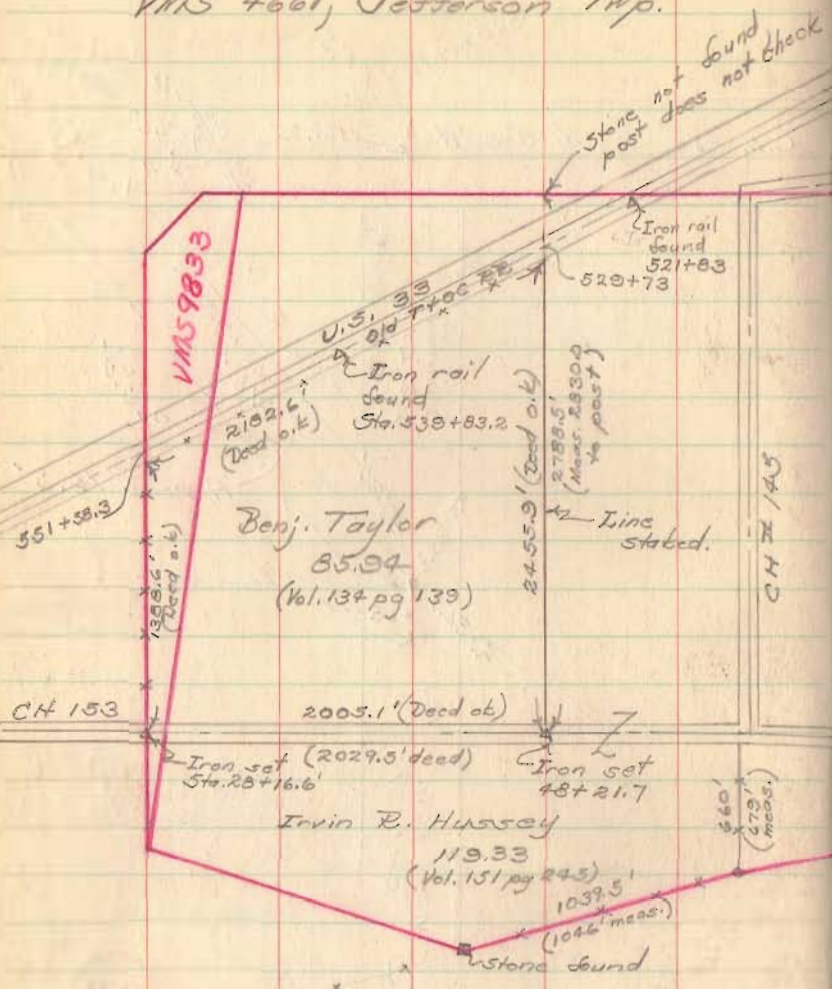
O. Shirk  
Aug 8, 51

57



Taylor-Hussey Property Line  
 VMS 4661, Jefferson Twp.

Mar. 12, 13 + 14 1952  
 Party: - C.E. Kayson 58  
 G.W. Wilgus  
 D.W. Johnson



Note: - Nothing checked on north line of survey.

See File H-2 **V302 6** for survey of T+OC RR, Fence lines checked as shown, and checked dead distances.

**VMS 4661**

On line staked; north end of fence was on the line; at the center point the fence was 2' east of our line and remained 2' east of our line to the south end. New fence on north end, existing center anchor post. Was 6' north of our measured center point.  
 CH 153

**INDEXED ON MAP**

**2053**

**INDEXED ON MAP**

See FB 573 pg 41 for survey CH 153  
 " FB 623 pg 44-52 survey CH 44  
 " File Rd 145

All deed distances on Taylor deed checked. Deed distances on Hussey's inconsistent.