

BM

1134.945

1

Checked (X) on door Step N. Door Main Bld.

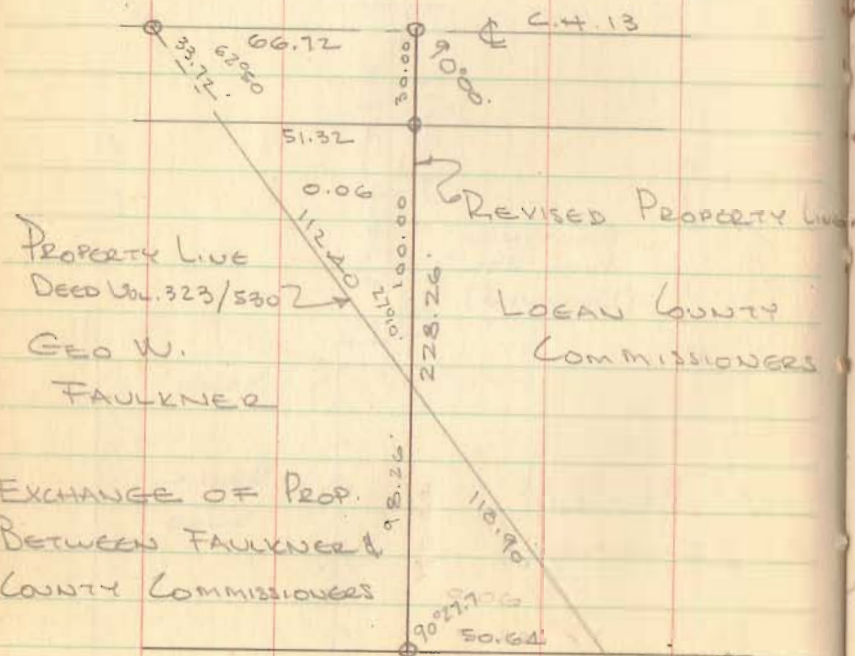
26 91



RESURVEY OF 1.96 AC. TR.  
SEC. 12 T-3 R-14.

HARRISON TOWNSHIP

- A = Stone Found @ C.H. 13 & C.H. 32  
N.E. COR OF S.E. 1/4 SEC 12-3-14
- B = R.R. spike Found 4" deep
- C = R.R. spike Set 1000' E. of "B"
- D = 3/4" Pipe Found - Set By W.V. Scott
- E = 3/4"  $\phi$  Bar Found " " " ?
- F = 1/2" Pipe Found " " " ?



Dodson  
Nichols  
Pruitt

5/2/79

15

NOTE: Lot Revised 7/11/79  
to 143.0' Frontage.

