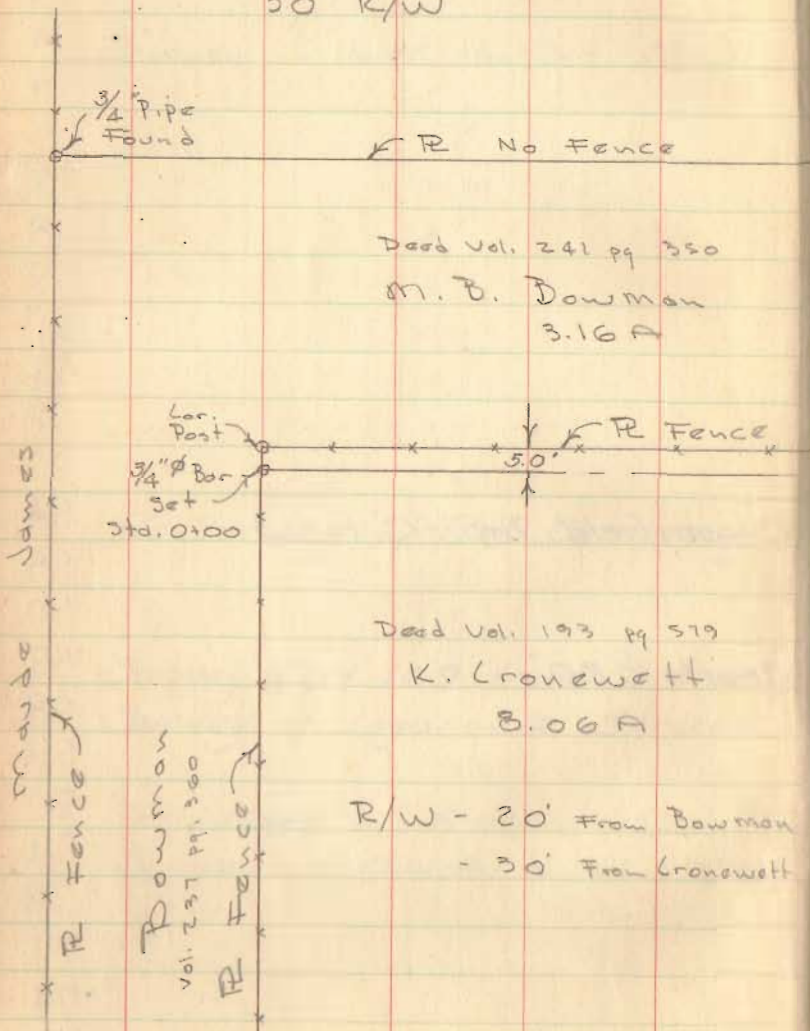


C.H. No. 96
 Richland Township
 v.m.s. 9968
 50' R/W



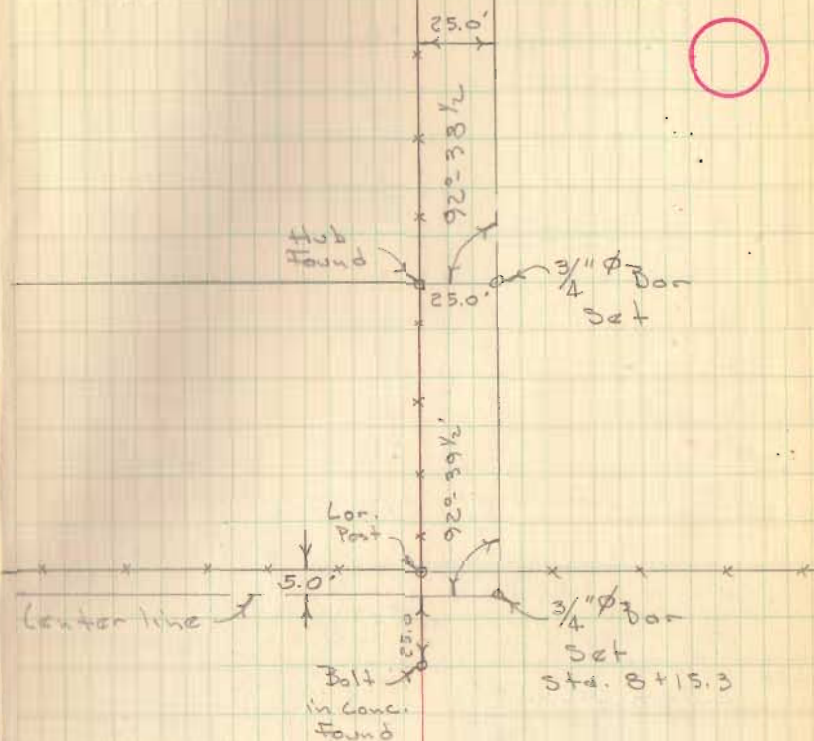
Deed Vol. 241 pg 350
 M. B. Bowman
 3.16 A

Deed Vol. 193 pg 519
 K. Cronewett
 8.06 A

R/W - 20' From Bowman
 - 30' From Cronewett

Dadson
 Gilbert
 Tevis

Jan. 13, 1959
 30°
 11:00



3456
 INDEXED ON MAP

C.H. No. 96

James L. Connor
Annabelle Jenkins

Con. post

R Fence

426.5'

22'



James L. Connor

2

Sta. 17+19.7

3/4" ϕ Bon

Set

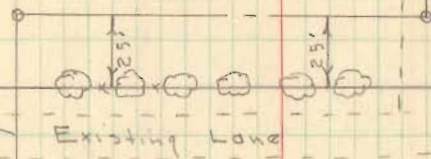
B6 = 25' Rt.

Sta. 19+59.9

3/4" ϕ Bon

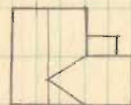
Set

91°-16' Lt.



Existing Lane

25.0'



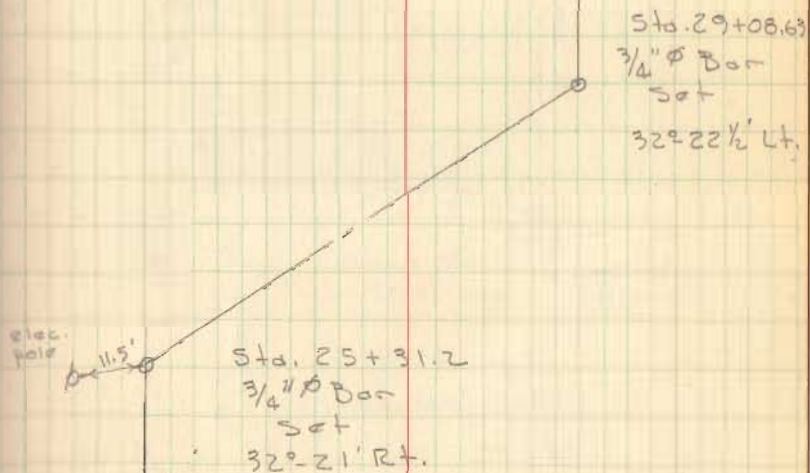
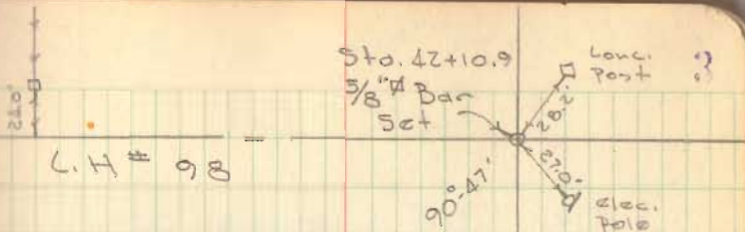
2-story
Frame

James L.
Connor

3456

INDEXED ON MAP

C. H. No. 96



3456

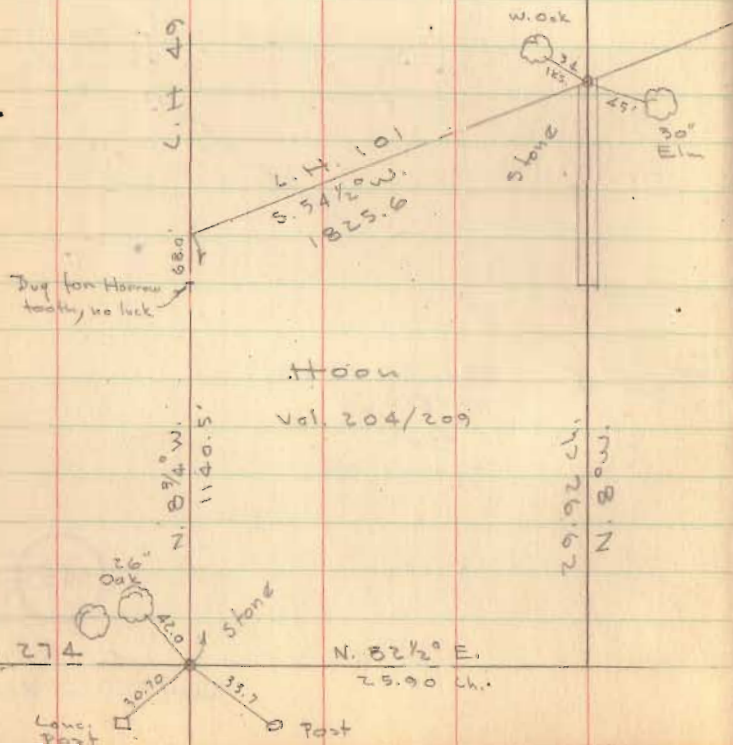
INDEXED ON MAP

C.H. No. 101

60' R/W

See Bk. C pg. 148

Meas. from stone @ 49 & 274, North 1140.5'
for C.H. 101, used this point of stone @ E.
line of Hoop for C.H. 101, stakes set
for elec. pole line - 30' S. of E.



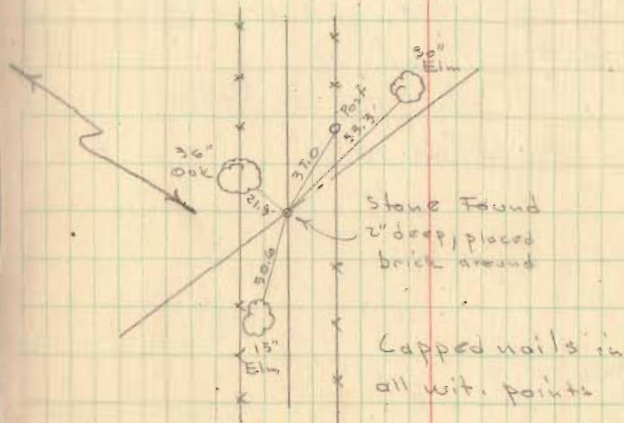
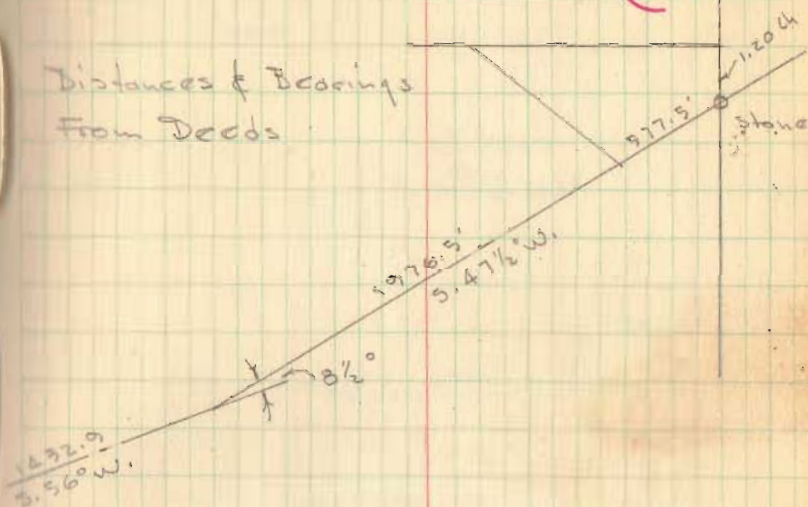
Dutton
Gilbert
Tavis

March 10, 1958

Snow



Distances & Bearings
From Deeds



3457

INDEXED ON MAP

C.H. No. 11
LAKE TWP.
60' R/W

JULY 22, 1939
HOT & HUMID

D. DOBSON
D. GILBERT
D. TEVIS
D. SMITH

5



STA 6496.3
68.4
1 1/2' STA.
FRAME
65.5
STA 6462.6
DRIVE
STA. 6492.9

DRIVE STA 4437.1
DRIVE STA 4138.0
STA 411.4
62.6
1 1/2' STA.
FRAME
68.5'
STA 3187.6

115' 1" IRON PIPE FOUND
STA 3162.25

STA 3148.7
69.75
1 1/2' STA.
FRAME
69.8'
STA 3121
DRIVE
STA 2498.2

C.H. No. 18
STA 3135.25



3458

INDEXED ON MAP

STA 3165.25 1" IRON PIPE 1.15' RT. OF R.

SEE F.B. # 561 p.p. 22

STA 3135.25 - C.H. No. 18

STA 0100 BRASS PLATE 1/4 SECTION LINE UNDER
W. R.R. BRIDGE

SEE F.B. 660 p.p. 22

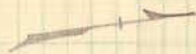
C.H. No. 11
LAKE TWP.
60' R/W

STA 12+69.9 FENCE RT.

STA 9+74.4 12' FENCE LEFT

STA 7+61.6 R FENCE RT.

7/22/59



24.1
← FENCE
STA. 12+69.9 → R

STEEL POST 19.8
← FENCE
STA. 9+74.4 →

Wood Post
20.8
← FENCE
STA. 8+90.3 →
DRIVE

STA. 8+59.7
108.6

109.2
← STA. 8+34.2 →

| | |
|---------|-------|
| R. SIDE | FENCE |
|---------|-------|

3458

INDEXED ON MAP

30.2
← FENCE
STA. 7+61.6 → R

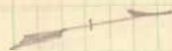
C. H. No. 11
LAKE TWP.
#0 R/W

STA 17154.3 R.R. SPIKE SET NO ANGLE

7/22/59

7

FENCE
SEA 21+59.5 22.5
IRON
POST



R.R. SPIKE SET ON E
STA 17+54.3
NO ANGLE

DRIVE
STA. 16+90 E

DRIVE
STA. 15+30.8 E
STA. 15+11.9
63.4'

63.6'
STA. 14+88.2

FENCE
22.9 STA. 14+56.0

3458

INDEXED ON MAP

C.H. No. 11
LAKE TWP.
60' R/W

7/22/09

80

* STA. 35+27.6 * 19.95'

N 85° 32' W

DRIVE
* STA. 34+08 *

FENCE * STA. 32+89.4 * 20.5'

STEEL POST
FENCE * STA. 31+98.5 * 20.0'

STA. 29+76.6 - R.R. SPIKE SET NO ANGLE

4-3-14

R.R. SPIKE SET ON E
STA. 29+76.6
NO ANGLE

3-3-14

STA. 26+01.95 - RESURVEY MONUMENT, TWP. E

SECTION LINE - ANGLE 0°-35½ RT.

SEE F.B. 660 pp. 50

HARRISON

TWP.

3458

INDEXED ON MAP

E C.H. No. 216

LAKE
33-4-14

R.R. SPIKE FOUND - E
STA. 26+01.95
0°-35½ RT. TWP.
(1°-10') 34-3-14

C. H. No 11
HARRISON TWP.
60' R/W

STA 52+70.5 - STONE FOUND ABOUT 2' DEEP -
1/4 SECTION LINE - HUB SET ON TOP.
ANGLE $0^{\circ}-09\frac{1}{2}'$ RT.

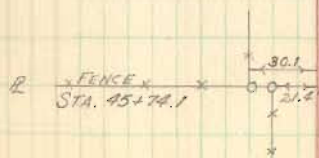
STA 45+74.1 R FENCE LEFT

JULY 23, 1959
HOT & HUMID

D. DODSON
D. GILBERT
D. TEVIS
D. SMITH



STONE FOUND
HUB SET ON TOP
STA. 52+70.5
ANGLE $0^{\circ}-09\frac{1}{2}'$ RT.
($0^{\circ}-19'$)



3458

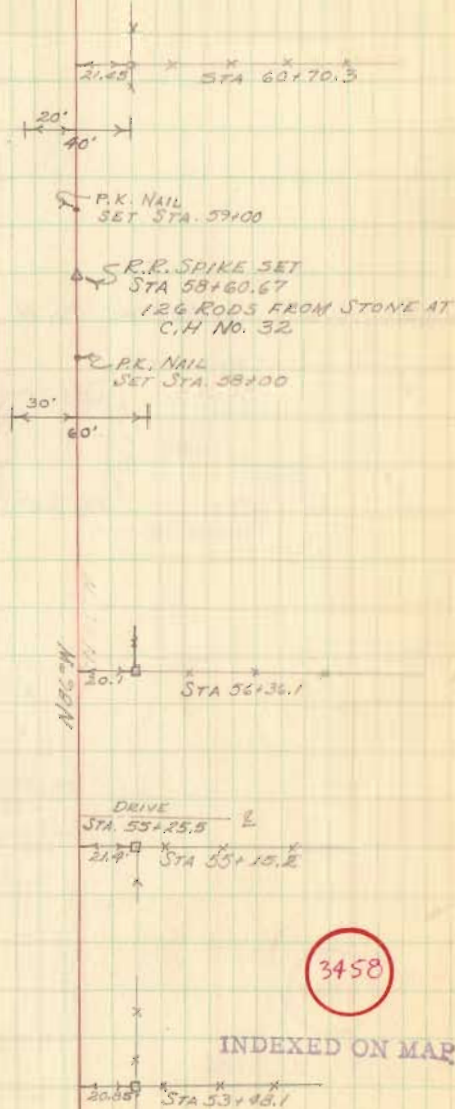
INDEXED ON MAP

C.H. No. 11
HARRISON TWP.
60' R/W

STA 58+60.67 R.R. SPIKE SET TO DENOTE POINT
AT WHICH R/W CHANGES FROM 60' WIDE
TO 40' WIDE - NO ANGLE - 126 RODS
FROM STONE AT INTERSECTION C.H. #32

7/23/59

10

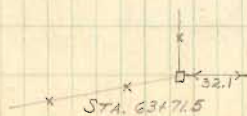
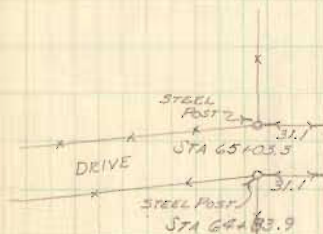
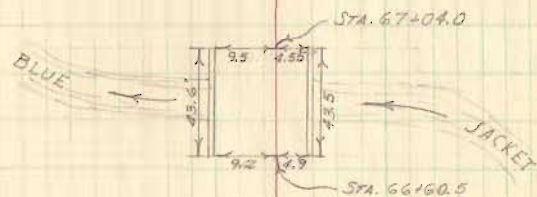


C.H No. 11
HARRISON TWP.
40' R/W

STA 66+60.5 Co. BRIDGE No. 11-F 16' METAL

7/23/58

11



3458

INDEXED ON MAP

C.H. No 11
HARRISON TWP.
40' R/W

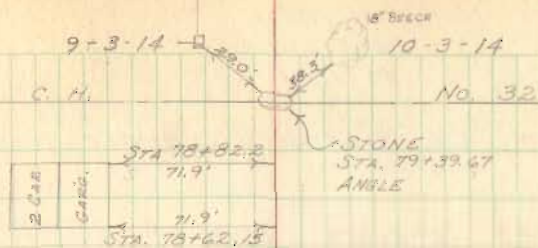
STA. 79+39.67 - STONE SECTION LINE
INTERSECTION WITH C.H. No. 32
SEE E.B. # 561 - pp. 68

STA 72+14.1 R. FENCE LT.

STA 70+02.3 R. FENCE LT.

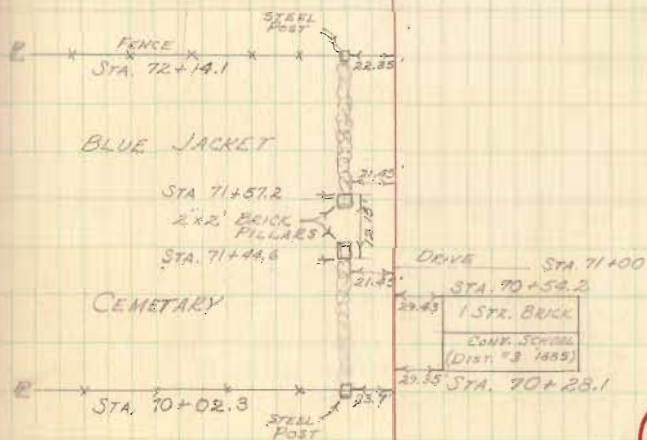
7/23/59

12



3-3-14

4-3-14



3458

INDEXED ON MAP

C.H. No. 11
HARRISON TWP.
40' R/W.

STA 85+00 R.R. SPIKE SET - NO ANGLE

STA. 84+51.9 R FENCE LEFT

STA. 81+54.5 R FENCE RT.

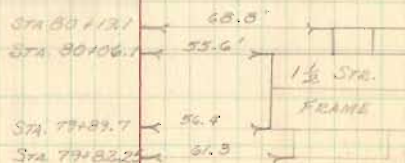
13

R.R. SPIKE SET
STA 85+00
NO ANGLE

R FENCE
STA. 84+51.9

19.3 STA 81+54.5 R

19.5 STA 80+37.2



3458

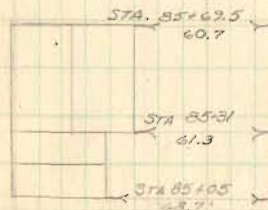
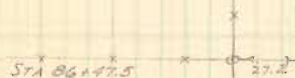
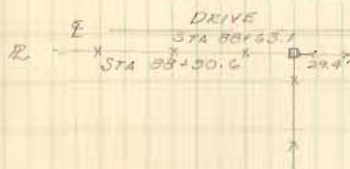
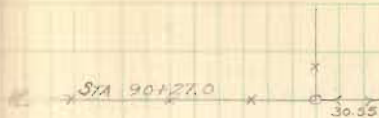
INDEXED ON MAP

C.H. No 11
HARRISON TWP.
40' R/W

STA. 90+27.0 R FENCE LEFT

STA 88+50.6 R FENCE LEFT

14



3458

INDEXED ON MAP

C.H. No 11
HARRISON TWP
40' R/W

STA 98+99.27 1/2" IRON PIN FOUND - 0.13' LT. OF E
R FENCE RT.

STA 96+64.4 R FENCE RT.

STA 92+87.1 R FENCE RT.

STA 92+66.75 3/4" IRON FOUND 0.10' LT. OF E
INTERSECTION C.H. No 204.

15

1/2" IRON PIN
STA 98+99.27
0.13' LT. OF E



STA 98+99.6

DRIVE

STA 96+95.2

2.50'
STA 96+64.4 x R

DRIVE
STA 94+18.5

STA 92+87.1 x R

C.H. No. 204

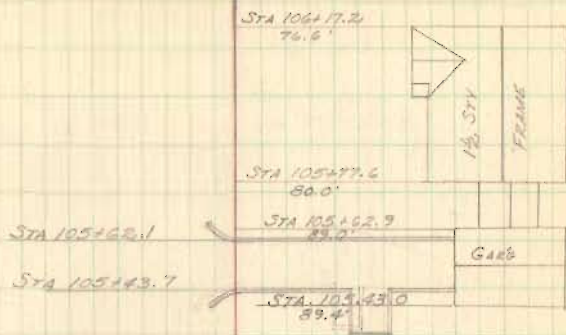
3/4" IRON FOUND
STA 92+66.75
0.10' LT.

3458

INDEXED ON MAP

C.H. No 11
HARRISON TWP.
40' R/W

16



4.3' STA. 104+63.0 R
DRIVE
STA. 104+20.4 ASPHALT

5.0' STA. 101+50.5 R

DRIVE
STA. 100+33.4

3458

INDEXED ON MAP

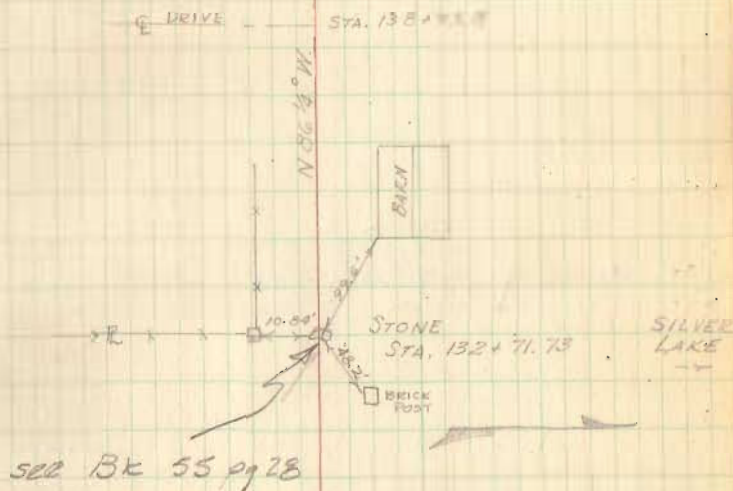
C.H. No 11
HARRISON TWP.
40 R/W

STA. 132+71.73 - STONE - SECTION MARKER
SEE F.B. 55 pp. 28

STA. 106+79.7 INTERSECTION C.H. No 198
SECTION MARKER (R/W MON) FENCE RT.

AUG 19, 1959
WEEK HOT
DLD
DLT
DEG
DWS

17



34-58

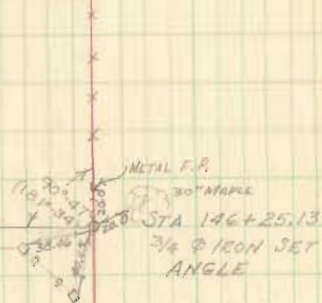
INDEXED ON MAP

C.H. No. 11
HARRISON TWP
40' R/W

STA 146+25.13 - 3/4" IRON SET ANGLE 90°47' LT.

18

S 3 1/2° W



STA 141+22.5

20.3
STA 139+74.9

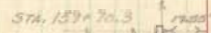
3458

INDEXED ON MAP

C. H. No. 11
HARRISON TWP.
40 RW

19

STA. 162+51.78 $\frac{3}{4}$ " IRON SET ANGLE 90°-45' LT.



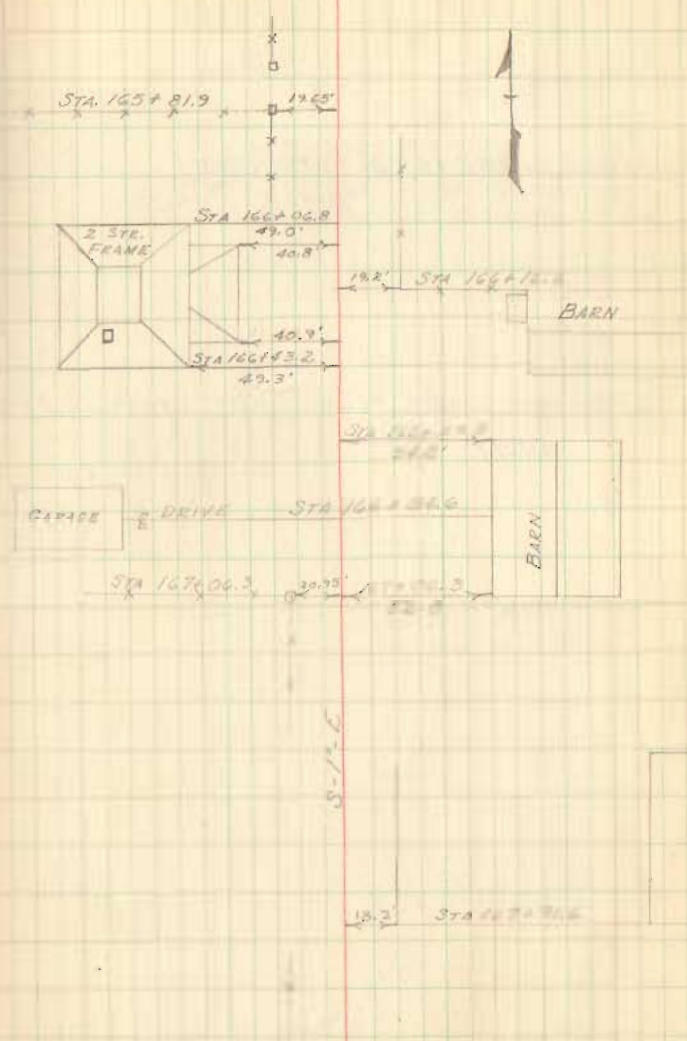
STA. 158+16.35
 $\frac{3}{4}$ " IRON SET ANGLE



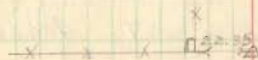
3458

INDEXED ON MAP

C.H No 11
 HARRISON TWP
 40' R/W



STA. 168+53.7 - RR SPIKE SET - NO ANGLE



R.R SPIKE SET
 STA 168+53.7
 NO ANGLE

3458

C.H. No 11
HARRISON TWP.
40' R/W

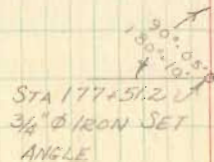
STA 187+63 - 188+02.8 BRIDGE

STA 187+30.2 SECTION LINE STONE & FENCE
ANGLE $0^{\circ}-07\frac{1}{2}'$ LT.

STA 177+51.2 $\frac{3}{4}$ " ϕ IRON SET ANGLE $90^{\circ}-05'$ RT.

AUG 20, 1959
90° S

21



3458

INDEXED ON MAP

C.H. No. 11
HARRISON TWP
40 R/W

STA 199+53 R.R. SPIKE SET NO ANGLE

DLD
DLT
DEG
DWS

22

CEMENT
POST \square ^{19.00} STA 207+23.5

21.1 \square STA 201+00.8

20.15 \square STA 201+59.9

CEMENT
POST \square ^{19.65} STA 200+79.9

STA 199+53
R.R. SPIKE SET
NO ANGLE

DRIVE STA 193+93.8

STA 198+89.8 \square ^{19.55}

19.9 \square STA 193+39.1

3458

INDEXED ON MAP

C.H. No 11
HARRISON TWP
40' R/W

STA. 245+46.9 RR SPIKE SET NO ANGLE

STA 240+69.9 1" IRON PIPE FOUND INTERSECT.
C.H. No 46. ANGLE 0°-16' LT.

STA 214+03.9 3/4" IRON PIPE FOUND
INTERSECTION C.H. No 201 ANGLE 0°-05' RT.
SEE E.B. 678 PP 10

23

STA 245+46.9
R.R. SPIKE SET
NO ANGLE

0°-16'
(0°-32')

E C.H. No 46
STA 240+69.9
1" IRON PIPE
ANGLE

E DRIVE
STA 232+53.2

DRIVE
STA 228+90.9

0°-05'
(0°-10')

E C.H. No 201
STA 214+03.9
3/4" IRON PIPE FOUND
ANGLE

STA 210+79.7 12.63'

3458

INDEXED ON MAP

C.H. No 11
HARRISON TWP
40' R/W

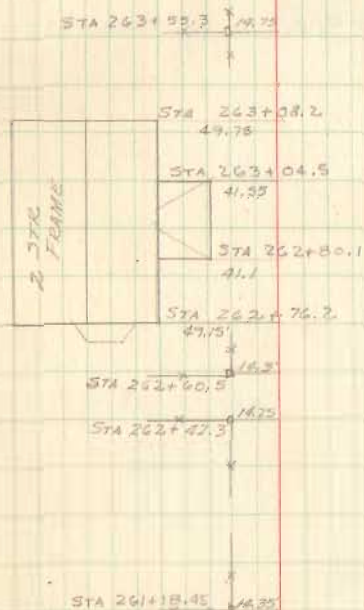
STA 267+30.5 $\frac{1}{2}$ " ϕ IRON INTERSECTION

C.H. No 31 END SURVEY

SEE FB 667 pp 10

24

C.H. No 31 STA 267+30.5
 $\frac{1}{2}$ " ϕ IRON



20.85' STA 243+94.1
CONC POST

3458

INDEXED ON MAP

C. H. No. 79
Bloomfield Township
Sec. 22 T-7 R-8

C. H. No. 79

45' From Rd. #13 to Rd 60

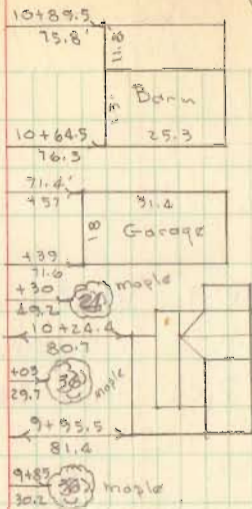
Vol. 10 pg. 134 & 163 (1853)

36' From Rd. 60 South to angle
west.

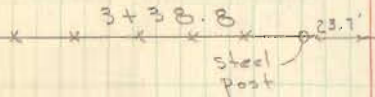
Rd. Rec. 3 pg. 306-315 (1911)

Dodson
Detrick
Gilbert

May 13, 1958
25



18" C.M.P.
Sta. 7+36.5



3459

INDEXED ON MAP

0+00 Iron @ intersection C.H. # 79 & 13
Iron found - placed 1 1/4" pipe flush
with roadway surface

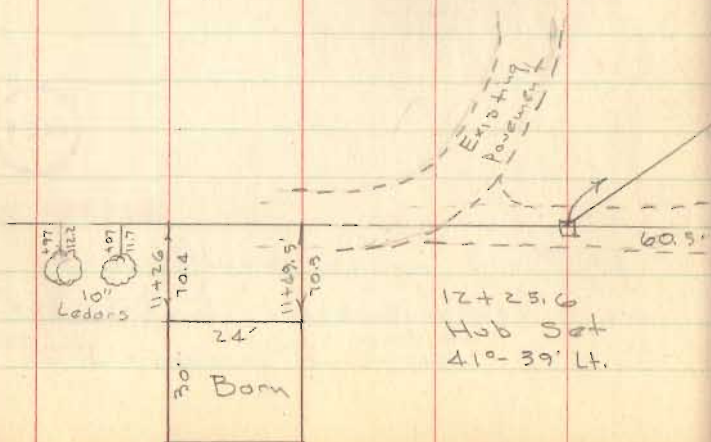
Iron Found
Sta. 0+00

C.H. No. 13
South

| | | | |
|----------|-------|----------------|--|
| 19+17.83 | P. T. | R. R. spk set | $\Delta = 47^{\circ} 35'$ $D = 150.00'$ |
| 17+68.58 | P. I. | R. R. spk. set | $R = 383.07'$ $T = 168.88'$ |
| 15+99.70 | P. C. | Hub Set | $L = 318.13$ |

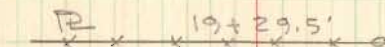
| | | | |
|----------|--------------|----------------|---|
| 13+58.36 | P. T. | Hub Set | $\Delta = 41^{\circ} 39'$ $D = 150.00$ |
| 12+25.6 | PI - Hub Set | | $R = 383.07'$ $T = 145.71'$ |
| 10+79.90 | P. C. | R. R. spk set. | $L = 278.46$ |

11+14.6 R. R. spk set - P. O. T.

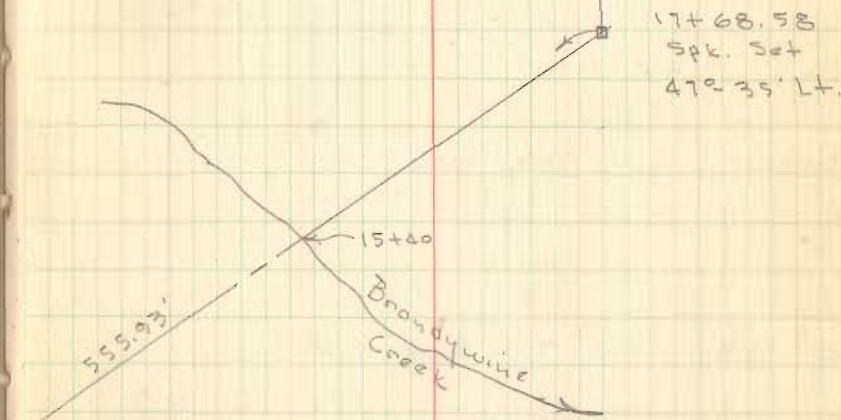


12+25.6
Hub Set
41°-39' Lt.

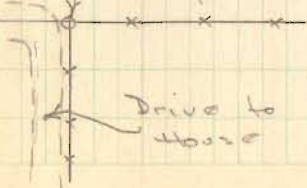
Millard Notestine



Homer Notestine



Car post
used for E. & W. Φ



House

3459

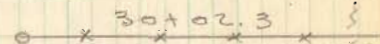
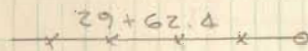
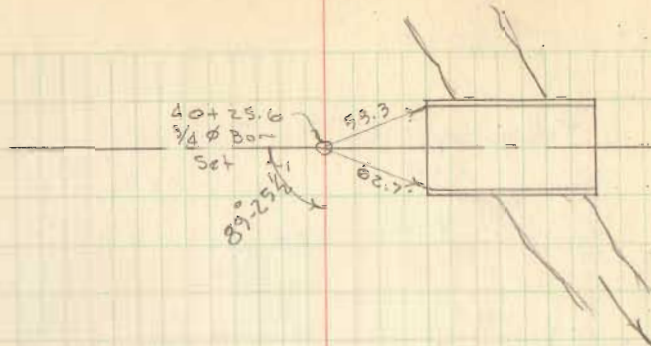
INDEXED ON MAP

40+25.6 $\frac{3}{4}$ " ϕ Iron set @ E.C.H. #60

30+00 R.R. spk set

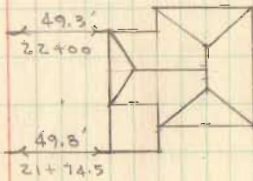
24+35.3 P.O.T. - spk set

21+87.9 P.O.T. - spk set



Notestine
C.
Millard

Notestine
C.
Millard



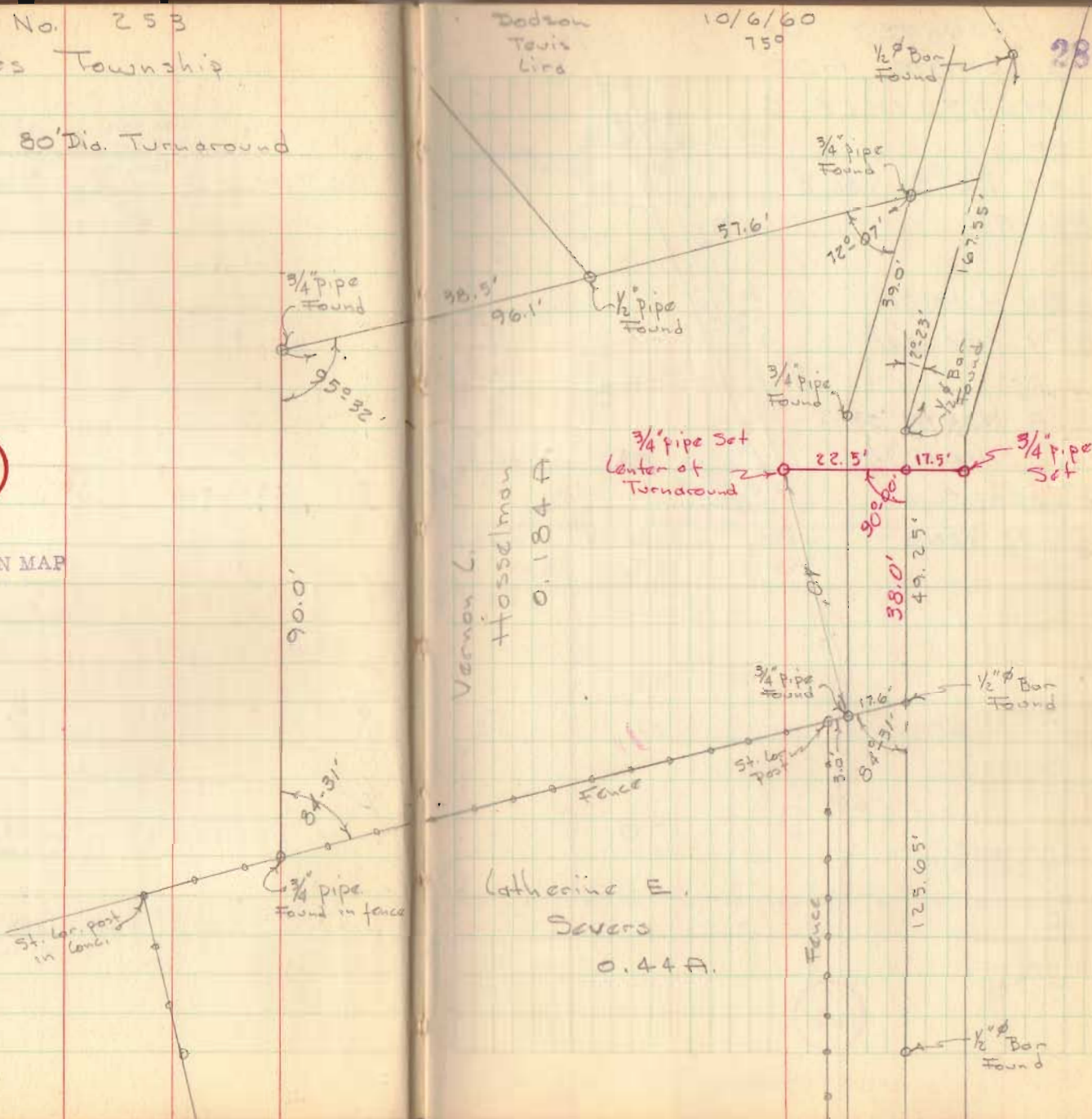
3459

C. H. No. 253
Stokes Township

Proposed 80' Dia. Turnaround

3460

INDEXED ON MAP

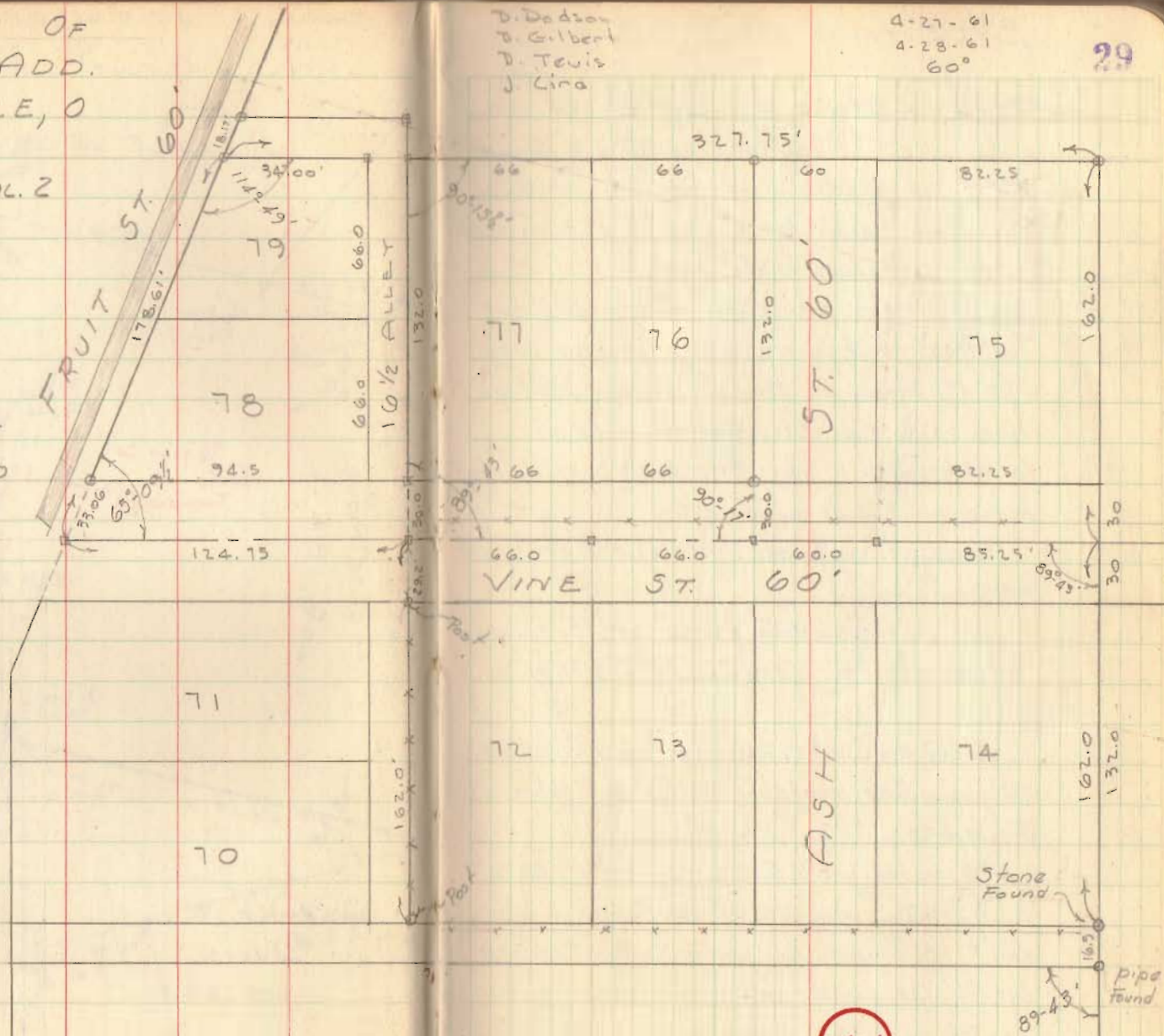


RESURVEY OF
BICKHAM ADD.
HUNTSVILLE, O

PLAT Bk. B Vol. 2
Pg. 53

□ = Hkd. Hubs set
○ = 3/4" Pipe set

AREA NORTH OF
GR. LINE Pg. 30
TO LOGAN Co.
SHRINE CLUB -



D. Dodson
D. Gilbert
D. Lewis
J. Cline

4-27-61
4-28-61
60°

BICKHAM ADD CONT'D.

Began @ stone S.E. cor. lot 74.

- found pipes @ S.E. cor. lot 155 & S.E. cor. Ralph Carter lot - produced this line North for E. line Bickham Add. (Used 10' offset to the West)

Meas. from stone N. 162.0 feet, set Htd. Hub for E VINE ST. - Turned angle (89°-43') shown on Mantieth Allot. - used this line as E Vine St. - set Htd. Hubs at lot distances - this line 3.5' S. of Existing fence on N. side of VINE ST.

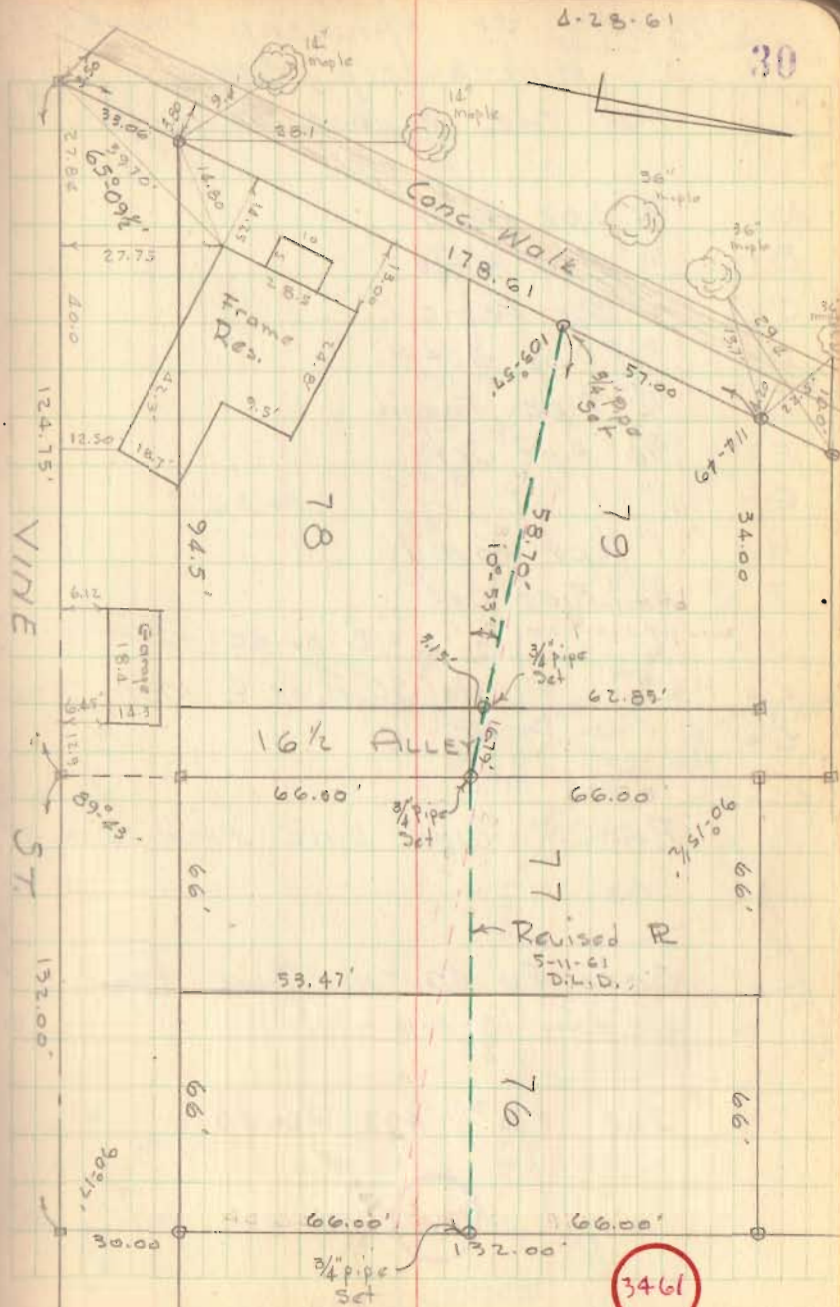
Meas. N. on offset line 162.0' & set 3/4" pipe @ N.E. Cor. lot 75

Set on Htd Hub, E @ S.W. cor lot #77 - turned 89°-43' meas. N. 162.0'; set Htd Hub - N.W. cor #77

Set @ N.W. cor. #77 - backsight pipe @ N.E. cor #75, produced line West 50.50'; set 3/4" pipe for N.W. cor. #79

Set on Htd hub, E @ S.W. cor. lot #78, turned L 65°-0 1/2' - meas. 33.06 set 3/4" pipe for S.W. cor. #78 - meas. from pipe @ N.W. cor. #79. 18.17' Set 3/4" pipe for N. line of 16 1/2' alley

Set on Htd hub, E @ S.E. cor. #76, turned 90°-17' meas. 30.0 feet set 3/4" pipe for S.E. cor #76, meas. 132.0 set 3/4" pipe for N.E. cor. #76



SURVEY OF RAILROAD PROPERTY
 HUNTSVILLE, OHIO
 FOR THE VILLAGE OF HUNTSVILLE

- A = $\frac{3}{4}$ " pipe Found
- B = $\frac{1}{2}$ " pipe Found
- C = $\frac{1}{2}$ " Bar Found
- D = $\frac{3}{4}$ " pipe Set
- E = $\frac{1}{2}$ " Pipe Found
- F = $\frac{3}{4}$ " pipe Set
- G = " " "
- H = 1" Pipe Found
- I = $\frac{3}{4}$ " Pipe Set
- J = " " " "B" pg 40
- K = " " " 50' W. of E Main Track
- L = " " " " " " "

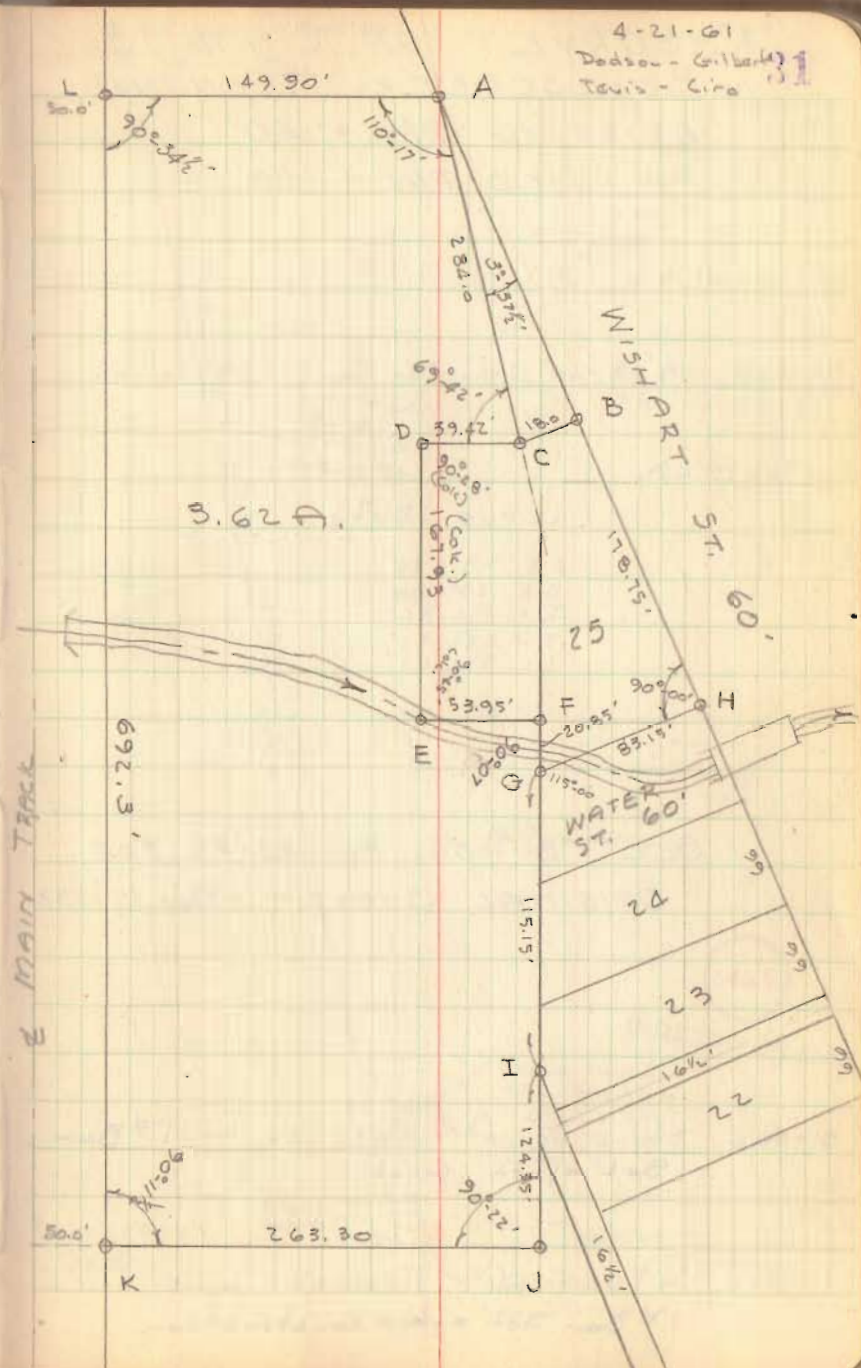
RAN RANDOM LINE FROM D TO E

SEE PG 40 THIS BOOK FOR
 DETAIL "E-F-G-H-J"

SEE F.B. # 493, PG. 25

3462

INDEXED ON MAP



RESURVEY OF C.H. No. 131
 BOKESCREEK TOWNSHIP
 EXISTING R/W = 40'
 PROPOSED R/W = 60'

PT 101+62.32

99+17.0 1/2" x 1/2" x 20" Iron Bar Found - 53°-16' Rt

PC. 96+29.65

Curve Data

$\Delta = 53^\circ - 16'$
 $D = 10^\circ - 00'$
 $R = 572.36$
 $T = 287.35'$
 $L = 532.67'$

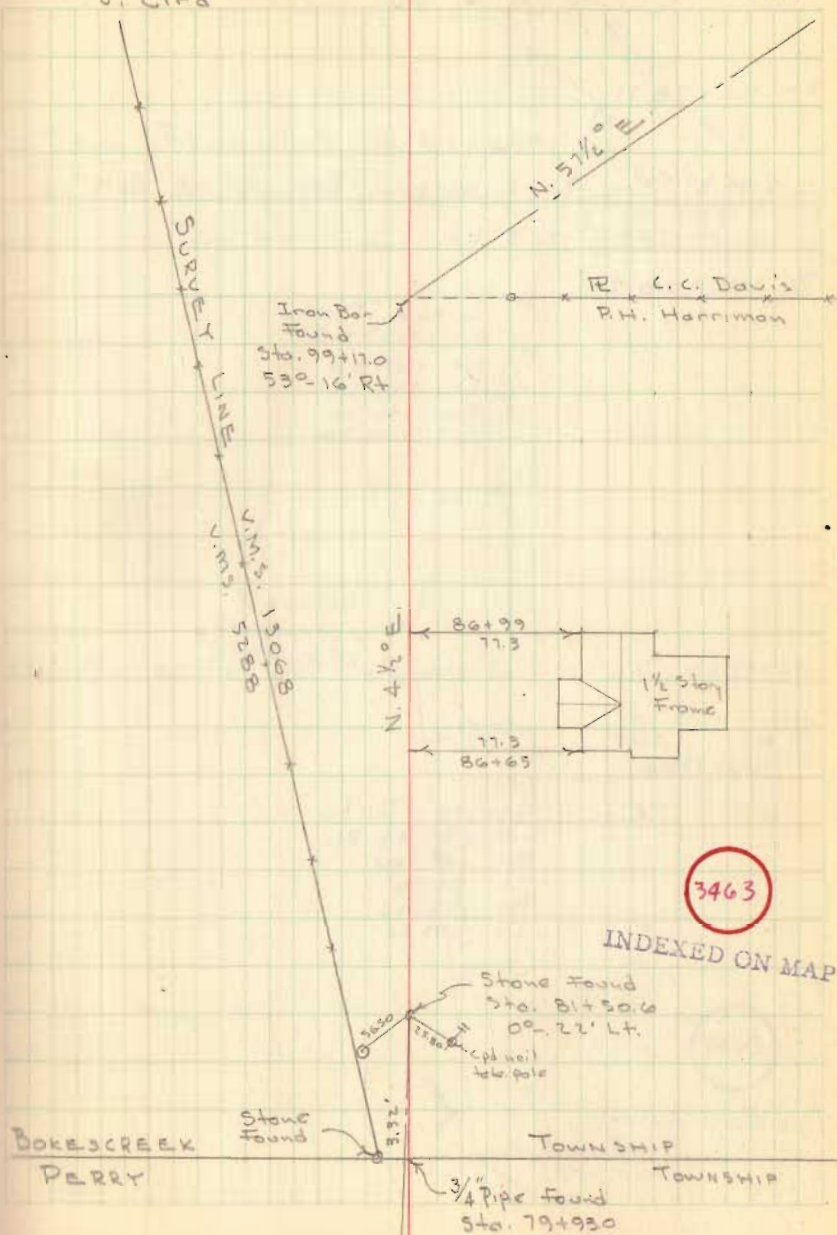
SEE FB # 561, PGS 40-43 FOR
 ORIGINAL SURVEY - AUG. 15, 1932

81+50.6 Stone Found - 0°-22' Lt. - 1" Bar
 Set after Const.

79+50.0 3/4" Pipe Found - Township Line
 1" Bar Set after Construction

D. Gilbert - Dodson
 D. Lewis *
 J. Cira

Nov. 21, 1960
 Cool - Fair 32



3463

INDEXED ON MAP

C.H. No. 131

PT 114+78.71

111+87.8 Iron Bar found, bent, Replaced with $\frac{3}{4}$ " pipe
67°-03' Lt.

P.C. 108+08.21

Curve Data
 $\Delta = 67^{\circ}-03'$
 $D = 10^{\circ}-00'$
 $T = 379.59'$
 $R = 572.96'$
 $L = 670.50'$

PT 105+70.22

104+92.20 Did not find iron pin - Set $\frac{3}{4}$ " pipe - 15°-43' Rt.

P.C. 104+13.02

Curve Data
 $\Delta = 15^{\circ}-43'$ Rt
 $D = 10^{\circ}-00'$
 $T = 79.18'$
 $R = 572.96'$
 $L = 157.20'$

11-22-60

Fair - 33

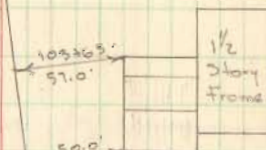
SEE REVISED ALIGNMENT

STA. 99+17.0 To 111+87.8

Pg. 35

$\frac{3}{4}$ " pipe Set
Sta. 104+92.20
15°-43' Rt.

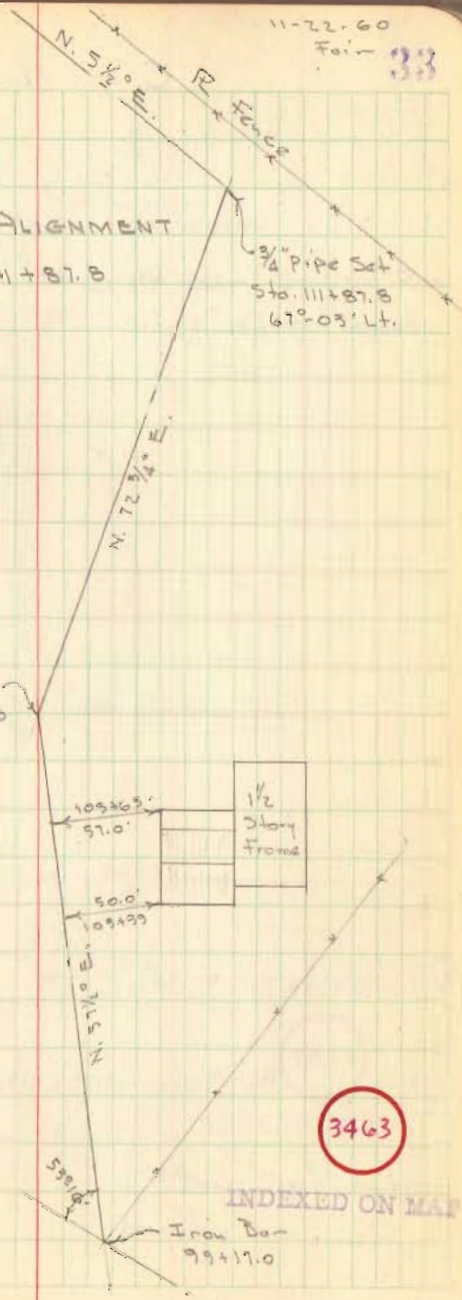
$\frac{3}{4}$ " Pipe Set
Sta. 111+87.8
67°-03' Lt.



3463

INDEXED ON MAP

Iron Bar
99+17.0



C. H. No. 131

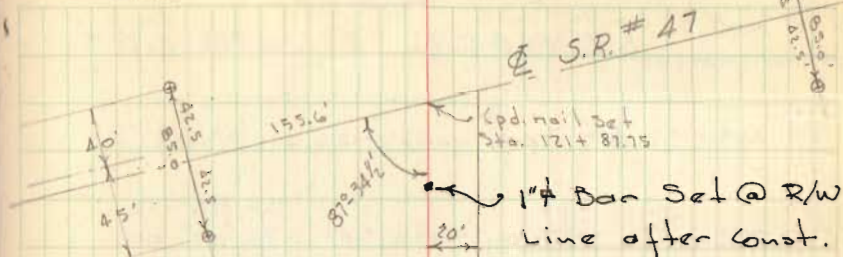
121+87.75 Lopped nail set Φ S.R. # 47

PT 114+78.11

114+06 R Fence McColluck - Davis

D.G. Ibert
D. Tevis
J. Cira

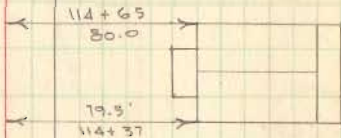
11-22-60



NOTE: Φ S.R. 47 AS
SHOWN ABOVE INCORRECT.
SHOULD BE 40' ON N. &
45' ON SOUTH - NAIL
SET AS SHOWN - 426-428'

N. $5\frac{1}{2}$ ' E.

Property Line



3463

INDEXED ON MAP

1" Bar Set after
const.

C. H. No. 131
REVISED ALIGNMENT

PT 115+35.63 Back - 115+26.41 Ahead

112+59.9 PI Harrow tooth set

$\Delta = 59^{\circ}-12'$
 $D = 10^{\circ}-00'$
 $T = 325.49$
 $R = 572.96$
 $L = 592.00$
 $E = 86.00$

PC 109+34.41

105+12.9 $\frac{3}{4}$ " Pipe - No Angle (old Sta. 104+92.20)

PT 102+86.21

$\Delta = 61^{\circ}-06'$
 $D = 10^{\circ}-00'$
 $R = 572.96$
 $T = 338.17$
 $L = 611.00$

100+13.38 PI $\frac{3}{4}$ " Pipe Set

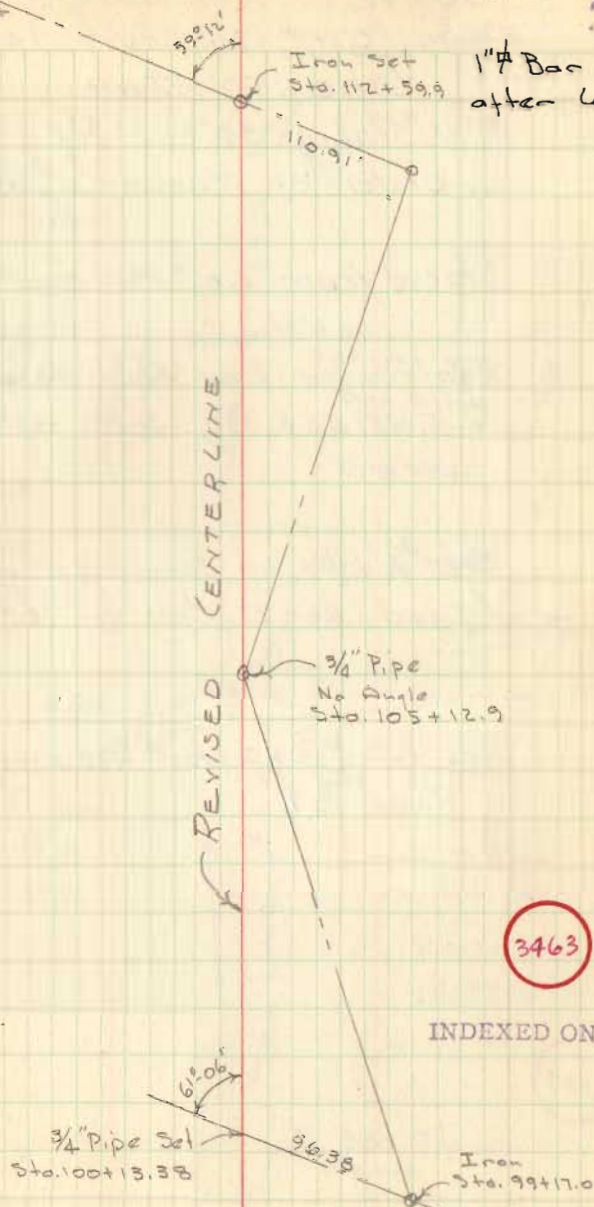
PC 96+75.21

D. Dodson
 D. Gilbert
 D. Lewis
 J. Lind

3-27-61

35

1" Bar Set
 after Const.



INDEXED ON MAP

SURVEY C.H. No. 32
 FROM C.H. #190 SOUTH 1408'
 LIBERTY TWP.

R/W Staked 30'-15' Rt & Lt. of R
 by order of Township Trustees

Staked from C.H. #190, south 1408.0'

Ran random line from resurvey mon.
 @ C.H. # 32 & 190, south to 1/4 Sec. Stone,
 2681.8'

Set 3/4" pipe on Sec. Line @ 1408.0'
 (Deed - Don E. King Vol. 185, pg. 118)

See F.B. # 660 for Resurvey Mon.
 PAGE 37

Dodson
 Gilbert
 Tevis
 Lino

1-3-14

4-16-60

31-4-14

36

C.H. # 32

Don E. King
 45.00
 Vol. 181/536

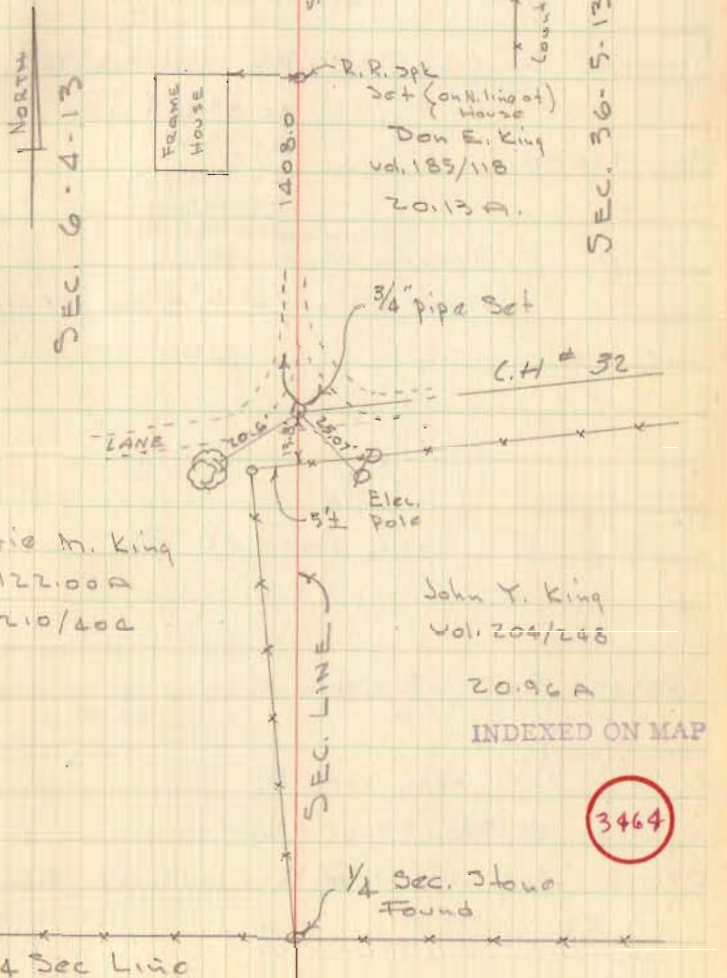
Sec. 6.
 Resurvey
 Mon Found

S. 86° E

C.H. # 190

Hub Set
 in N. Side ditch

Resurvey
 Mon Found
 46r.



Artie M. King
 122.00A
 Vol. 210/400

John Y. King
 Vol. 204/248

20.96A

INDEXED ON MAP

3464

C.H. No. 25
JEFFERSON TWP.

PT 13+77.02 R/W. mon. set 50' R/W

11+99.10 3/4" pipe Set - P.I. Angle 5°-20 1/2 Lt.

A = 5°-20 1/2
D = 1°-30'
R = 3819.83
T = 178.20
L = 356.12

PC 10+20.90

9+90 R/W mon.
set at 60' and 50' R/Ws. at R/L to E

5+00 R/W mon. set 60' R/W 16 Aug 66

2+89.95 P.O.T. R.R. spk. set

1+00 R/W mon. set 60' R/W Lt. mon. below surface 16 Aug 66

0+25.3 N. R/W Fence - East

0+00 Copd. nail set @ E of pavement - S.R. #47

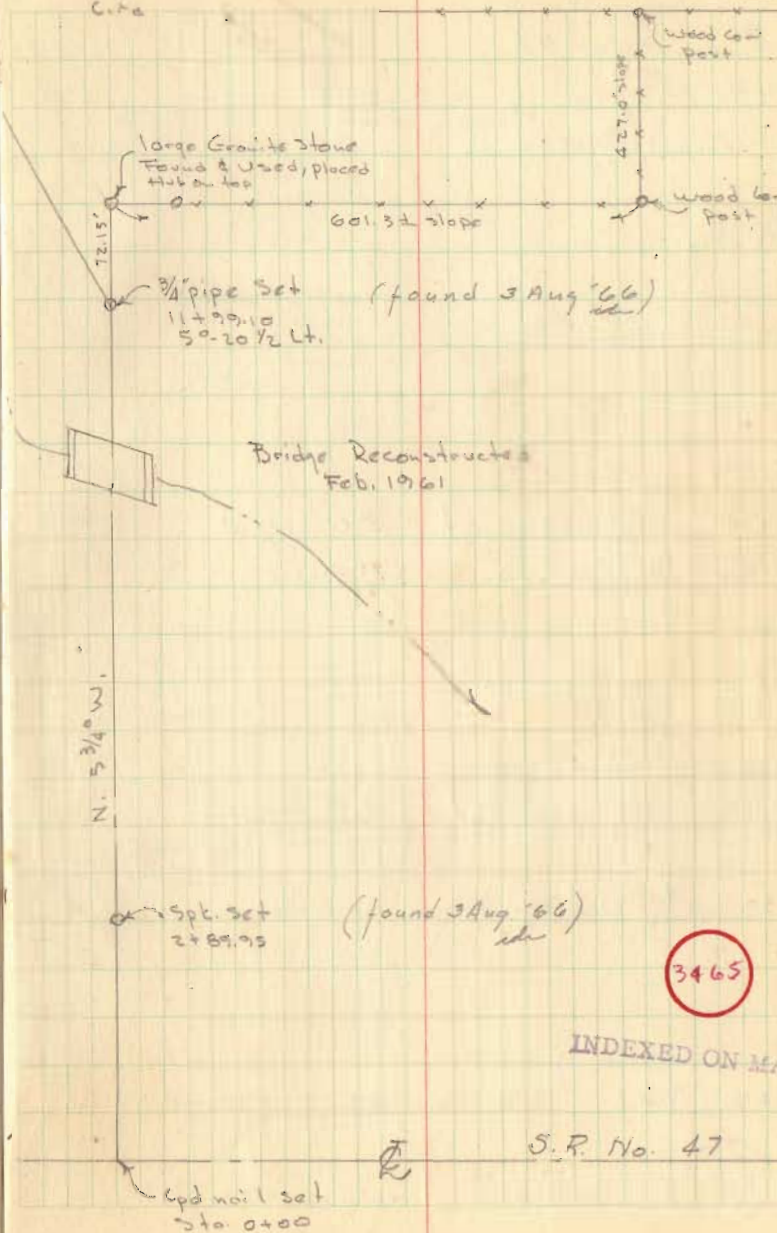
C.H. No.

25

Dadson
Gilbert
Tavis
Cite

4-7-60

37



S.R. No. 47

C.H. No. 25 (CONT'D)

27+34.9 $\frac{1}{2}$ " ϕ Bar Found

25+00 R/W mans. set. 50' R/W

24+73.0 $\frac{1}{2}$ " ϕ Bar Found - No Angle

20+00 R/W mans. set. 50' R/W

19+39.1 $\frac{1}{2}$ " ϕ Iron Bar Found - No Angle

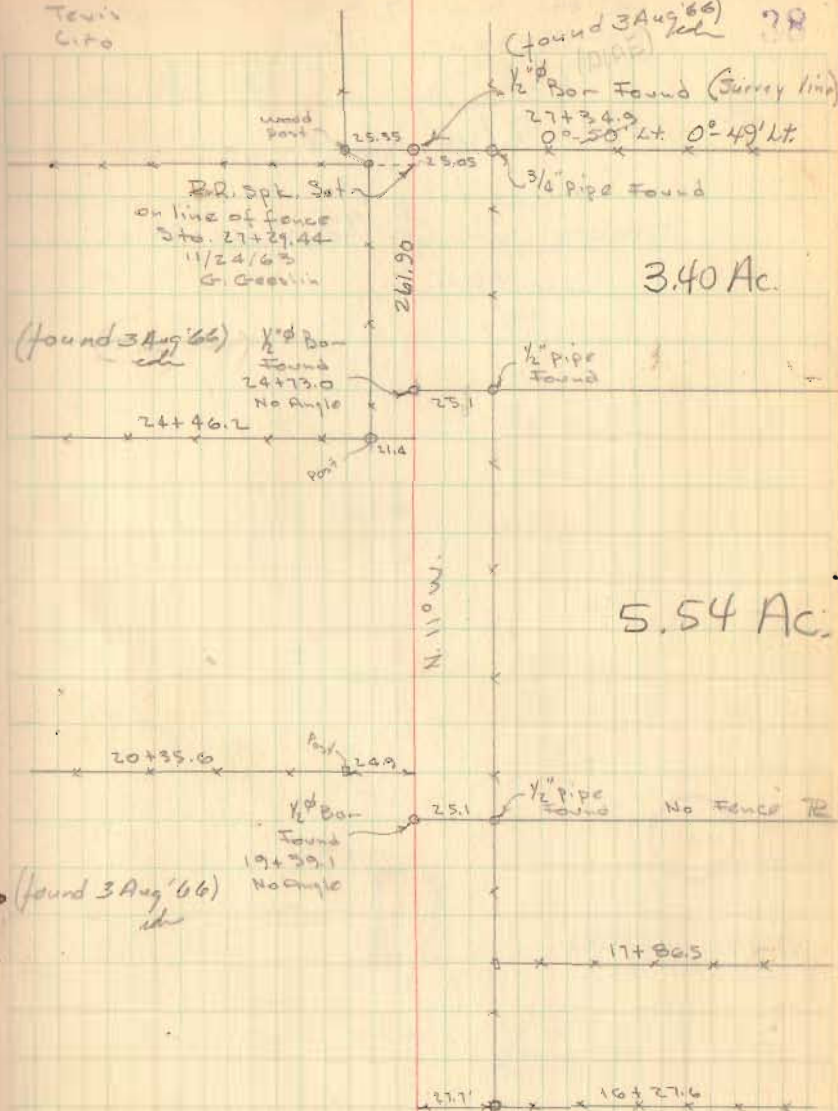
15+27.3 P.O.T. R.R. spk set. (found 3 Aug '66)
sch

15+00 R/W mans. set L'i. only 50' R/W

Gilbert
Tevie
Cito

4-12-60

(found 3 Aug '66)
sch 78



3.40 Ac.

5.54 Ac.

3465

INDEXED ON MAP

C.H. No. 238
McArthur Twp.

40' R/W

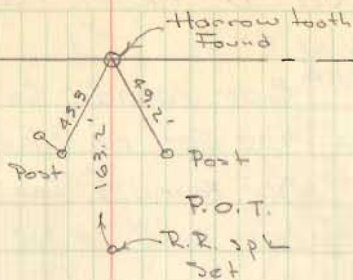
stakes set for telephone poles.

D.G. Gilbert
D. Lewis

7-21-58
Cool-Rail

39

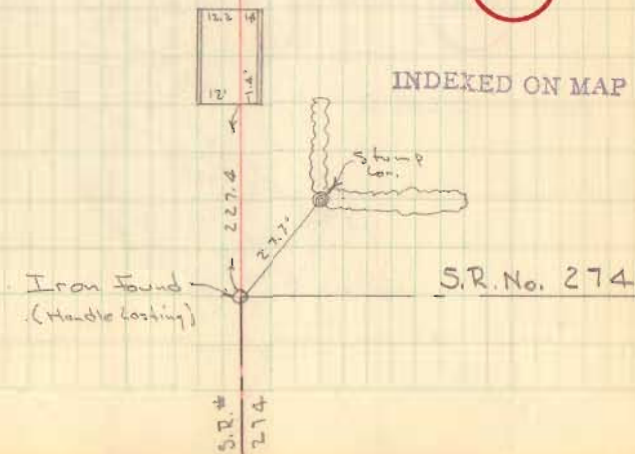
C.H. No. 37



C.H. No. 238

3466

INDEXED ON MAP



HUNTSVILLE SURVEY
CONT'D FROM PG. 31

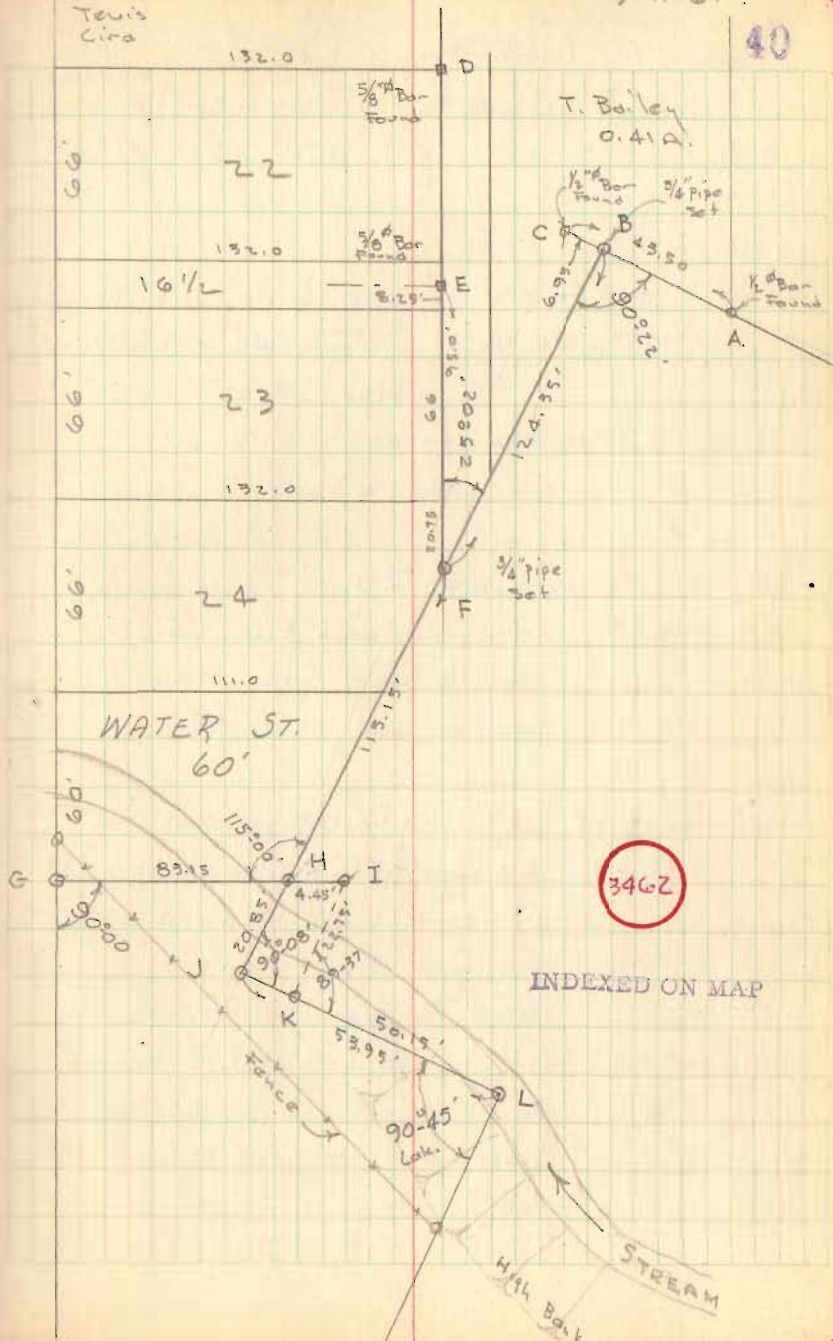
- A = $\frac{1}{2}$ " ϕ Bar found - Cor. T. Bailey
 B = $\frac{3}{4}$ " Pipe Set, on line A-C
 C = $\frac{1}{2}$ " ϕ Bar Found - Cor. T. Bailey
 D = $\frac{5}{8}$ " Bar Found - set by D.L.D.
 E = $\frac{5}{8}$ " Bar Found - " " " & o = 16 $\frac{1}{2}$ " Alley
 F = $\frac{3}{4}$ " Pipe Set - on Line D-E
 G = 1" Pipe Found - "P" in FB# 493/25
 H = $\frac{3}{4}$ " pipe Set on Line "F-B"
 I = $\frac{3}{4}$ " pipe Set - ("D" - FB# 493/25) (Did not find pins as indicated)
 J = $\frac{3}{4}$ " pipe Set on Line "H-F" & "K-L"
 K = $\frac{3}{4}$ " ϕ Bar Found - "N" FB# 493/25
 L = $\frac{3}{4}$ " ϕ Found in Creek - "M" FB 493/25

USED LINE C-A AS N. LINE OF
R.R. PROPERTY

Dodson-
Tewis
Circ

5-11-61

40



C.H. No. 17
STOKES TOWNSHIP

C.H. 17 @ C.H. 89 - Stone found, wit: S.W. cor.
N. bridge abut., N.E. 22.42' - N.W. cor.
S. " " S.E. 18.55'
Tree N.W. 46.40'
S.E. cor. walk to house, N. 50.80'

C.H. 17 @ SCHOOLER RD. - Stone found
Wit: Cor. fence post, N.W. 24.61
Loc. cor. post S.W. 31.28'
Loc. cor. post S.S.W. 39.06'

C.H. 17 @ C.H. 87 - Stone found
Wit: S.W. cor. 29. loc. post, N.E. 27.64' -
Cor. post, S.E. 29.0'
elec. pole, N.W. 43.18'
Telephone pole S.E. 30.95'

Stone 440' South of E C.H. 87 - Found
In line with fence west.
Cor. post, west 25.53'
utility pole, N.W. 25.23'

J. Cira
H. Notestine
D. Lippitt
J. Hoover
Co. line Mon. 22.70
Stone Found (found stone 20 July 67 1/2 deep C.N.)
8/61

Sec. 12, T-63, R-7E

Sec. 7, T-63, R-8E

SCHOOLER RD. Stone Found

(found 20 July 1967 1' deep C.N.)
C.H. 89
(found hub + RR spike forming 20 July 1967 witnesses ok C.N.)

Sec. 18, T-63, R-8E

Sec. 13, T-63, R-7E.

C.H. 88

IDLE RD.

Sec. 19, T-63, R-8E

rc. wit.
27.72 C.N. 20 July 1967

Sec. 24, T-63, R-7E.
42.07

Stone Found (found 20 July 1967 note with C.N.)
C.H. 87

3467

INDEXED ON MAP

Sec. 30, T-63, R-8E.

Sec. 25, T-63, R-7E.

C. H. 286 @
CRANE TOWN ISL.



- A = 3/4" bolt found (See F.B. 512 pg. 47)
- B = 1/2 Pipe found @ N.W. cor. lot 133
- C = P-K nail set @ intersec. N. line Seminole Dr. & E. C.H. 286
- D = 1" pipe found @ P.T.
- E = hkd. Hub found @ E. P.I.
- F = R.R. spk found @ P.C.
- G = 1/2" pipe found @ N. line LOGAN DR.
- H = " " " " " " " " " "
- I = R.R. spk found @ P.T.

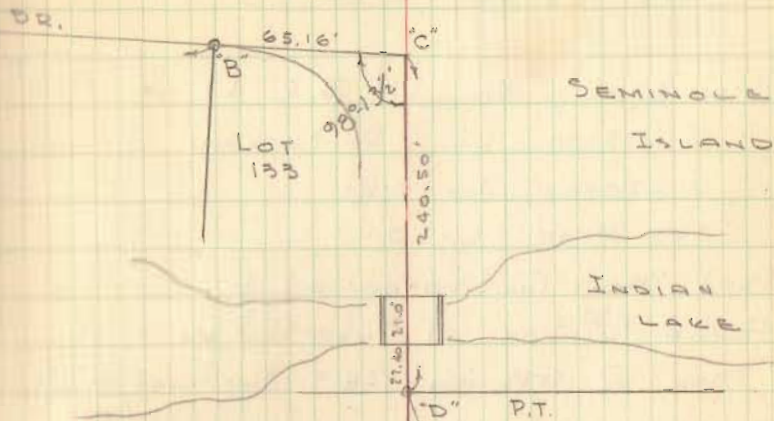
3468

INDEXED ON MAP

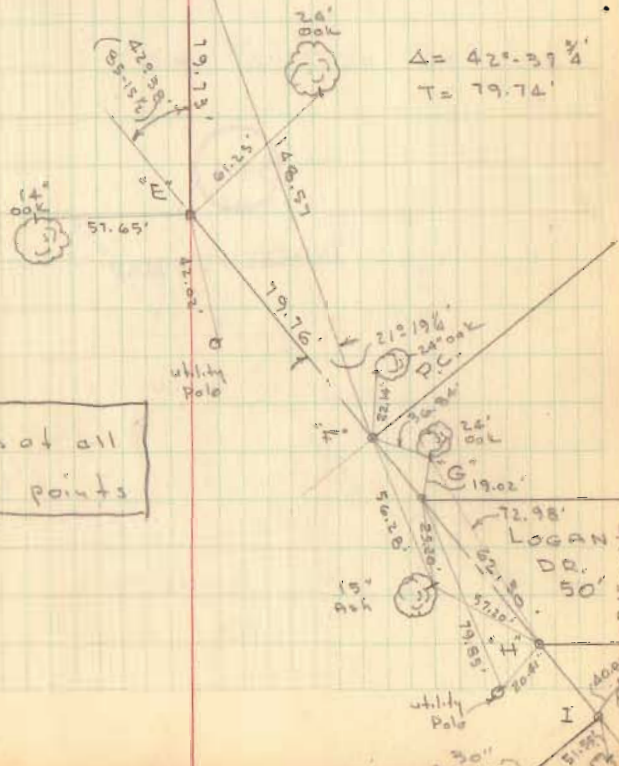
D. Dodson
D. Tevis

11/2/61
70°

42.



Cpd. nails at all witness points



SURVEY OF
HARRISON TWP. HOUSE
S.R. 47 @ C.H. 32

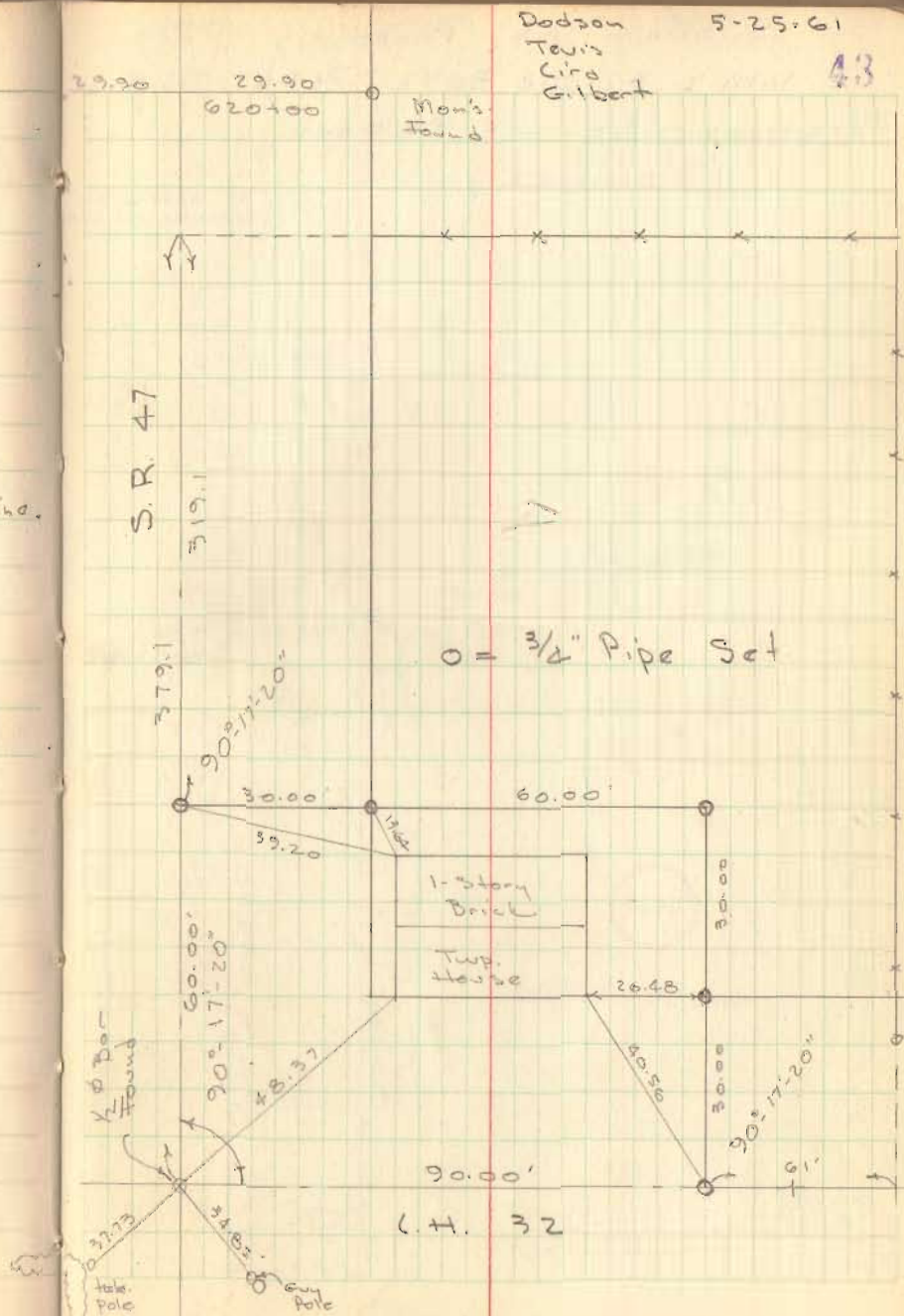
R/W Mon's. Found - S.R. 47
615+00 Lt. - Rt Broken
620+00 Lt & Rt.

See PLAN L-20

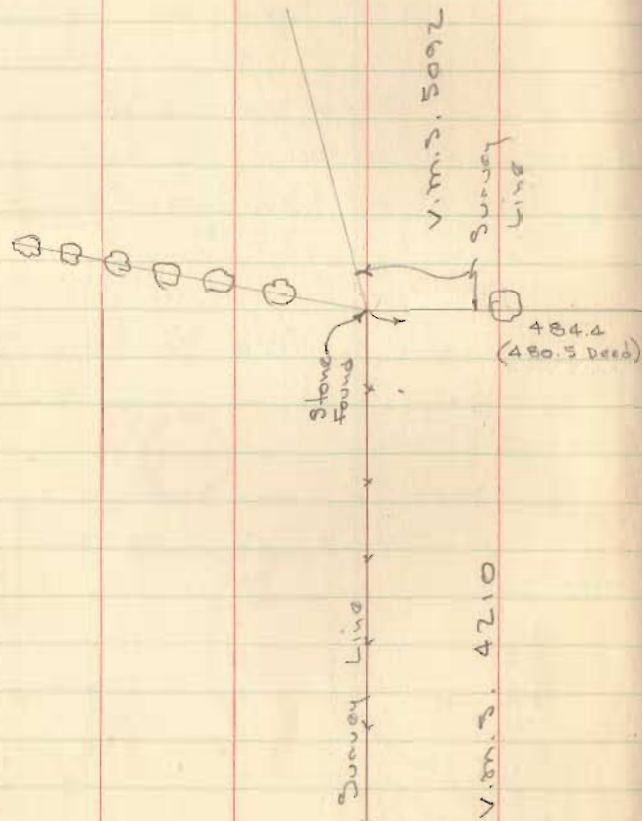
Used Mon's @ 620+00 as Φ
Found $\frac{1}{2}$ " Bar at intersection -
Mon. @ 615+00, 28.9 North of this line.

3469

INDEXED ON MAP



SURVEY OF PROPOSED ROAD.
 V.M.S. 4210 & 5092, PERRY TWP.
 PETITIONED BY L.F. DEGOOD
 (DISMISSED)



(Mr. DeGood says
 not in correct location)

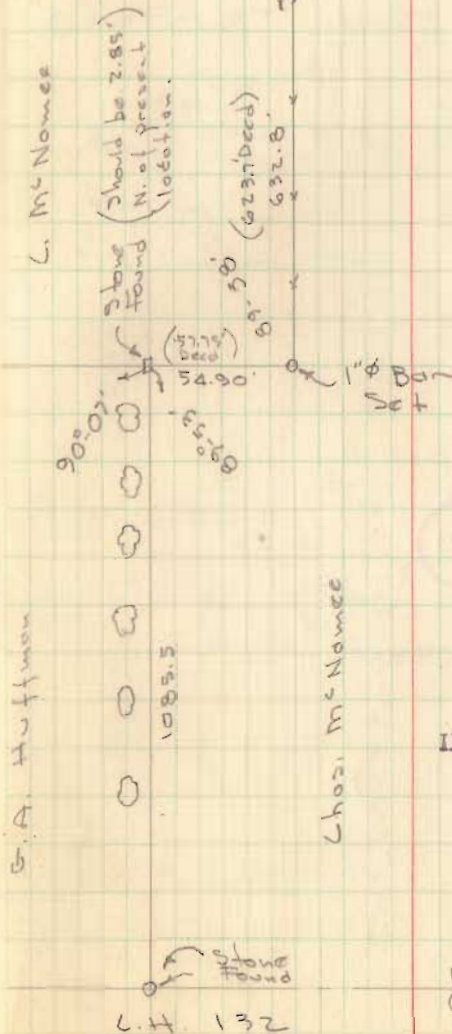
Dodson
 Tevi
 Ciro
 Dr. Lippitt

this fence
 line should be west

L.F. DeGood

6-8-61

14



L. McNamee

Stone Found
 (Should be 2.85'
 N. of present
 location.)

Lhos. McNamee

3470

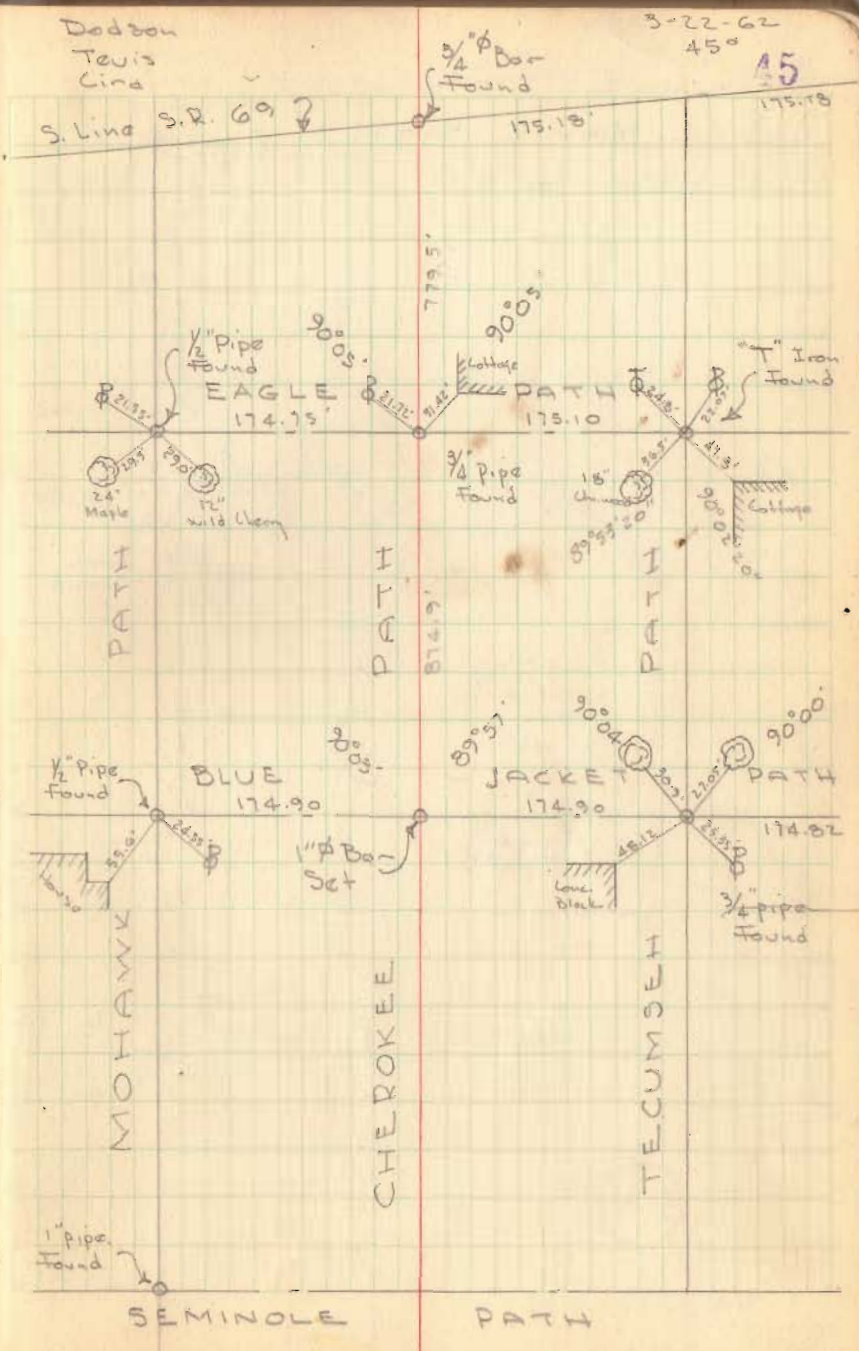
INDEXED ON MAP

McNamee
 W.E. Solte
 Judge

SURVEY OF
 CHEROKEE PATH
 (CHIPPEWA No. 1)
 FOR
 STOKES TWP. TRUSTEES

3471

INDEXED ON MAP



SURVEY OF
BLACK HAWK PATH
(HIPPEWA No. 1)



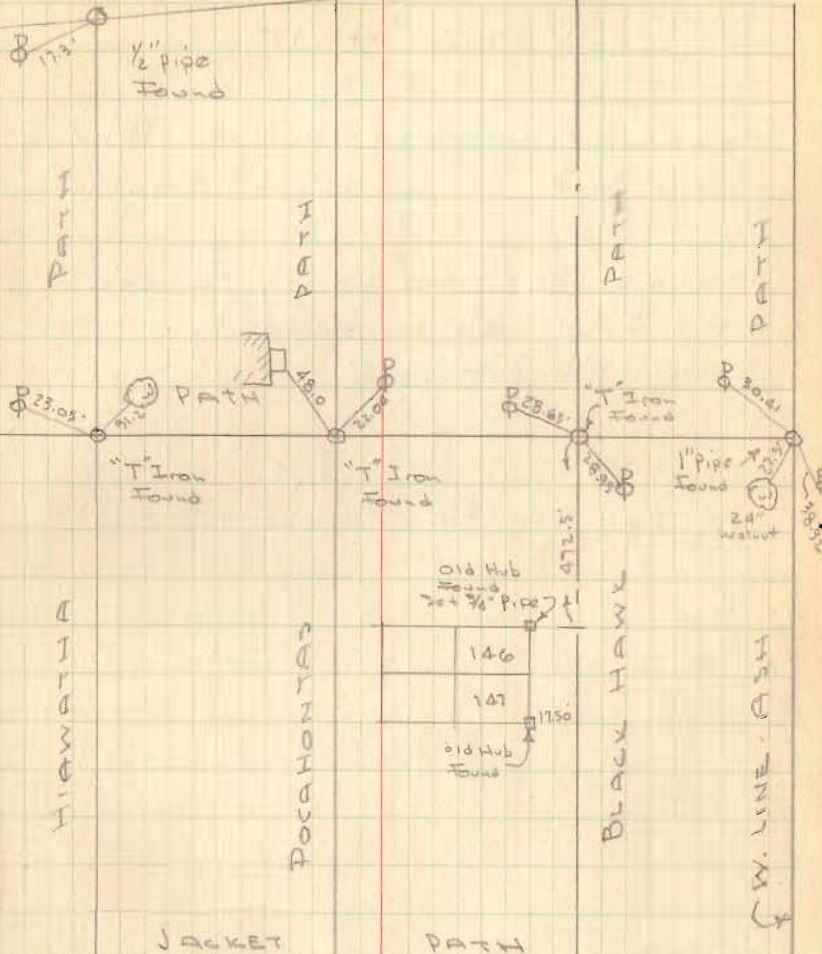
Dodson
Town's
Line

3-23-62

45°

46

S. Line 52.697



Old Hub
Found
24 3/4\"/>

146

147

Old Hub
Found

175.0

3472

INDEXED ON MAP

C.H. No. 132
PERRY TOWNSHIP
V.M.S. 4210

SURVEY TO ESTABLISH R/W
ON N.P. McCOLLOCH FARM

STAKES SET 30' LT of $\frac{1}{4}$ for
60' R/W AS requested by
Mr. N.P. McCulloch.

See pg. 44, this Book

G. Gessler
J. Linas
J. Cummings

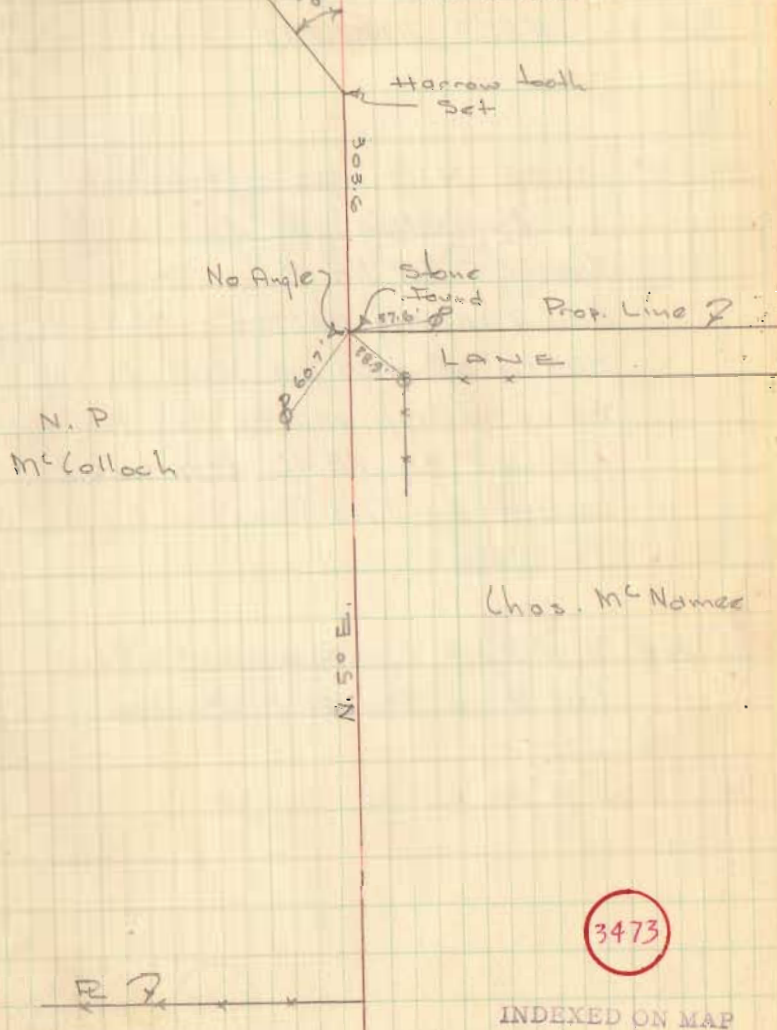
R. Cole

July 2, 1962

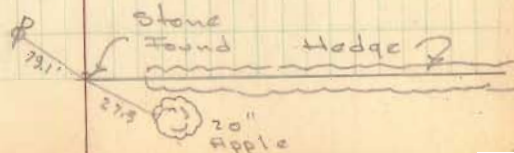
v.m.s. 5209

Survey Line
v.m.s. 4210

47



INDEXED ON MAP



FAIRVIEW CEMETERY
SECTION 10 K
WEST LIBERTY, OHIO

Note: Line A, B was established by beginning in the east line of Lot No. 9, in Sec. 6 F and running easterly 30 feet south of and parallel to the fence which marks the north line of an 18.40 acre tract owned by The Fairview Cemetery Trustees.

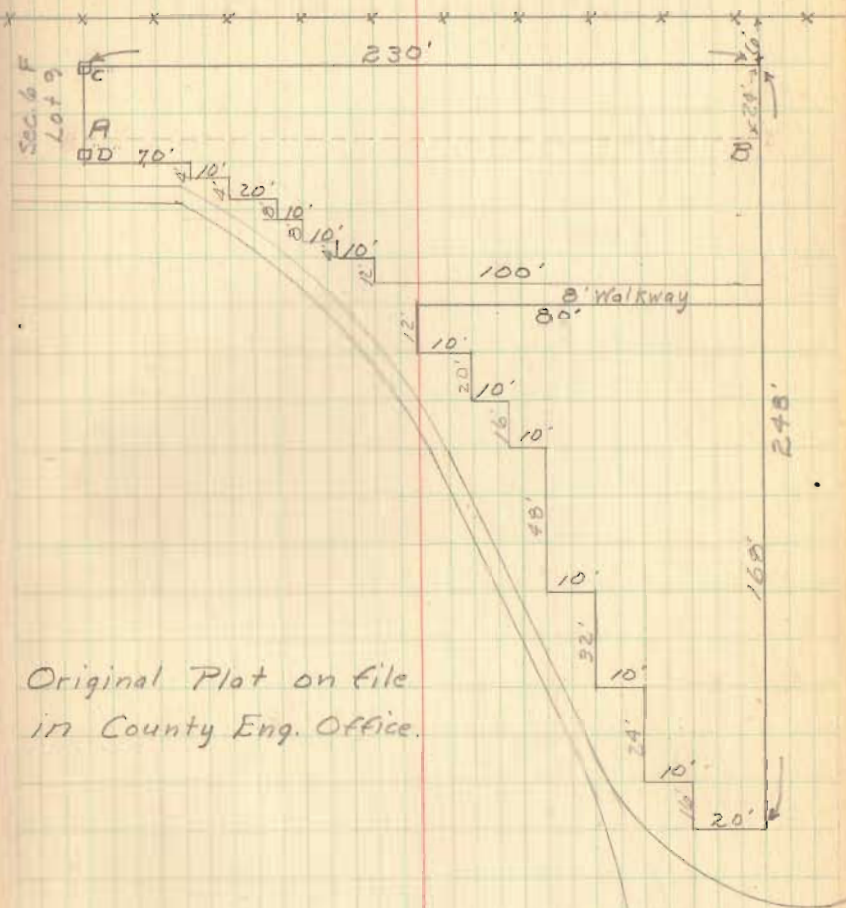
"C" and "D" = East Line markers of Lot 9 in Sec. 6 F, 30' apart.

C & D are 4" sq. marble markers.

D. Teris
D. Ricketts
T. Tillman

Aug. 13, 1962

48



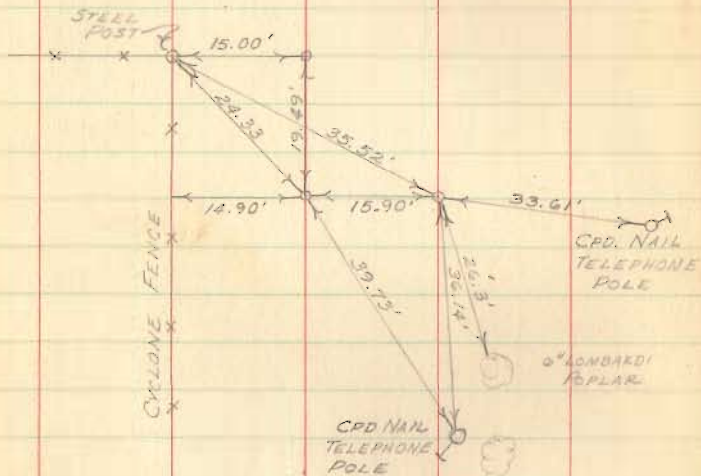
Original Plot on file
in County Eng. Office.

3474

INDEXED ON MAP

C.H. No. 245
LAKE TWP.

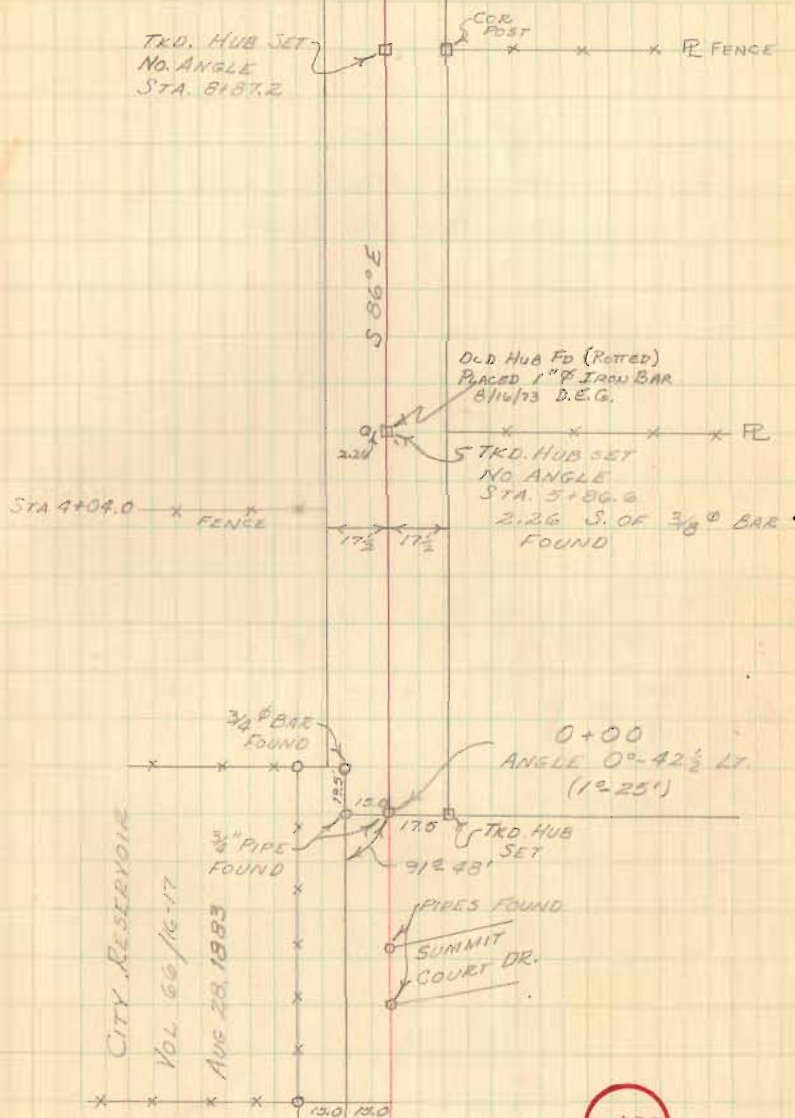
HAMER ROAD
C.H. No 245 - 35' R/W
SURVEYED 1904



DODSON
GILBERT
TEVIS

MAY 18, 1959
70°

50



3475

INDEXED ON MAP

C.H. No. 245

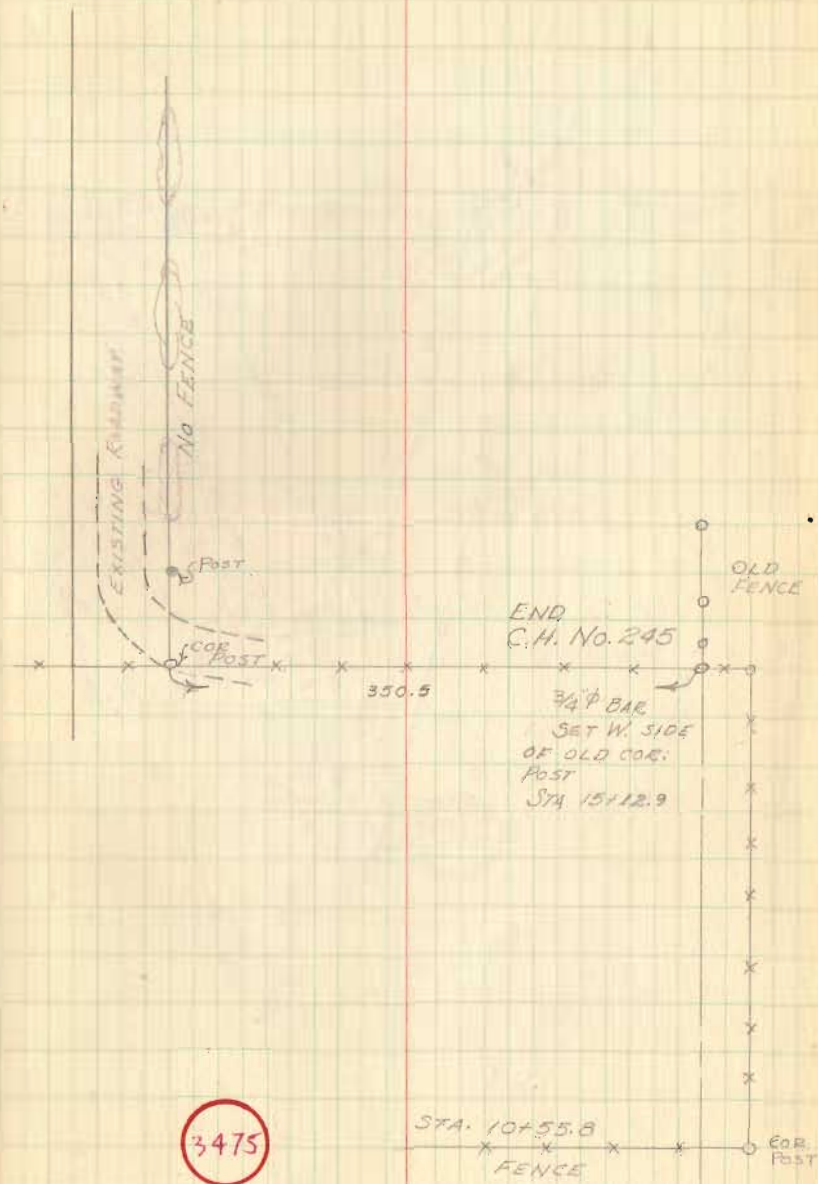
C.H. No. 245

VACATED MARCH 9, 1935

SEE FILE RD. # 245

MAY 13, 1959

51



INDEXED ON MAP

HEDGES SUBDIVISION (CONT)
(SURVEY FOR PROPOSED ROAD)

WITNESS OF POINTS

(A) 43.6' FROM S.W. CORNER GARAGE OF
YATES FRAME COTTAGE
47.20 FROM S.E. CORNER OF GARAGE

(B) 54.72 FROM S.W. CORNER OF GARAGE
66.20' FROM S.E. CORNER OF YATES'
COTTAGE
59.30' FROM S.W. CORNER GARAGE OF
N.E. SMITH FRAME COTTAGE

(C) 84.60' FROM N.E. COR. OF HOUSE
ON LOT No. 12
73.0' FROM S.E. COR OF HOUSE
66.40' FROM N.E. COR. OF HOUSE
ON LOT No. 11 (FLAT ROOF)
77.70' FROM S.E. COR. OF HOUSE

(D) 16.63 FROM S.E. COR. OF HOUSE
ON LOT No. 10
37.60 FROM N.E. COR. OF HOUSE
ON LOT No. 9

53

(E) 54.9' FROM S.W. COR. OF GARAGE ON F.K.
MC CRACKEN COTTAGE
44.9 FROM S.E. COR. OF GARAGE
67.7 FROM S.W. COR. OF CLARK COTTAGE

(F) 73.2' FROM S.W. COR. OF CLARK COTTAGE
70.9' FROM S.W. COR. OF FRAME COTTAGE
ON NEXT LOT E.

(G) 7.25' FROM S.W. COR. OF GARAGE ON
YATES' COTTAGE
31.65' FROM N.W. COR. OF GARAGE

3476

INDEXED ON MAP

Survey of C.H. No. 18
Union Township

See F.B. # 561 page 15 to 22

7+00.7 Prop. Line - Fence - Sparks & King

6+36.46 P.T.

5+23.25 P.I. $\frac{1}{2}$ Iron Found $\Delta = 28^{\circ} - 56' Rt.$

4+04.99 P.C.

0+00 R.R. spike found

Dodson
Gilbert
D. Liggett
Mac Smith

6/20/60
80° 54'

Ruby C. King
7+00.7
James P. Sparks

N 56° 41' E

James P. Sparks
36.35 A.

5+23.25
Iron Found
 $28^{\circ} - 56' Rt.$
($87^{\circ} - 32'$)

$\Delta = 28^{\circ} - 56'$
 $D = 12^{\circ} - 30'$
 $R = 458.38$
 $T = 118.26$
 $L = 231.47$

Clarence H. Parker
20.41 A.

N 27 $\frac{3}{4}$ ° E.

Sec. 2-3-14
Sec. Line
Sec. 1-3-14

(118.51
(228.05))

Sta 0+00

Re Survey
Mon. C.H. No. 49
N. 84 $\frac{1}{4}$ ° W.

3477

INDEXED ON MAP

C.H. No. 18
Union Township

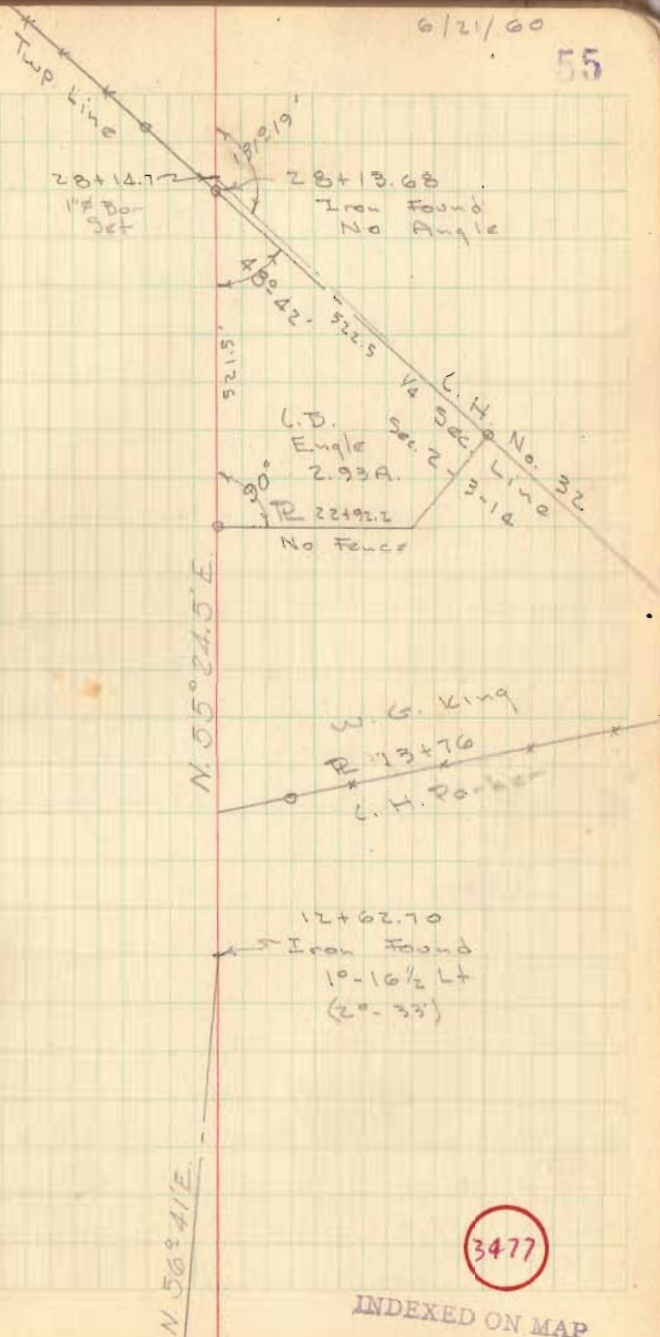
28+13.68 "0" Iron bar Found - E C.H. No. 32.
Ran 1/4 Sec. line from Re Survey Mon
@ 32 & 199 to 1/4 Sec. Stone @ E
old 32 North of 18, Set 1" ϕ Bar
@ E 18, Sta. 28+14.7

13+76 Prop. Line Fence - Parker & King

12+62.70 P.I. 1/2" Bar Found - 10-16 1/2 Lt.

6/21/00

55



C.H. No. 18
 Liberty Twp.

37+24.3 Iron Found - 1/4 Sec. Line - No Angle

36+87.6 Iron Found - No Angle

36+04.08 P.T.

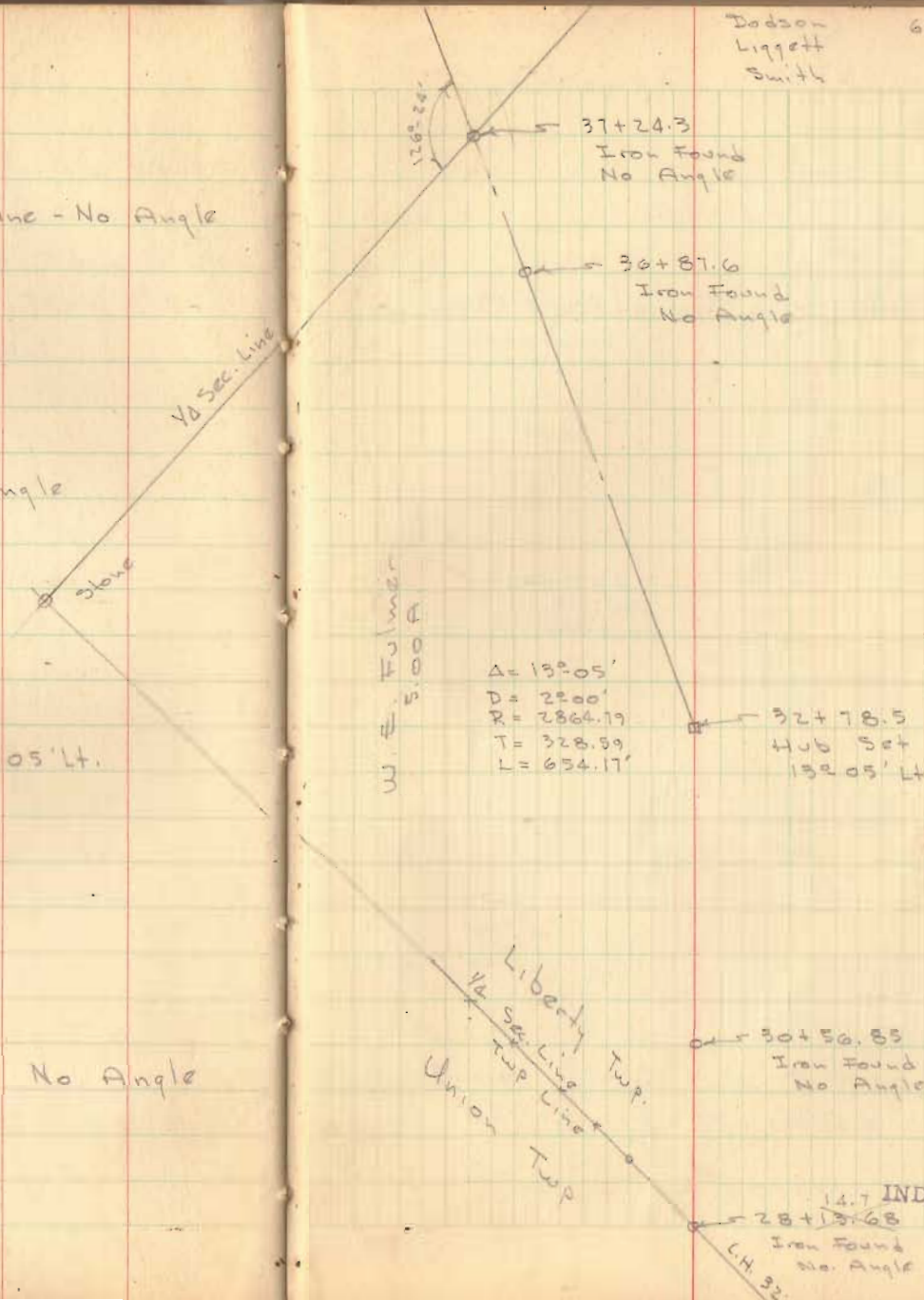
32+78.5 P.I. Hub Set $\Delta = 13^{\circ} 05' \text{ Lt.}$

30+56.85 $\frac{1}{2}''$ Bar Found (Bert) No Angle

29+49.91 P.C.

Dodson
 Liggett
 Smith 6/22/00

58



Lydia Weddings 75.15 A.

3477

INDEXED ON MAP
 14.7
 28+13.68
 Iron Found
 No Angle
 C.H. 32

C.H. No 18
 Liberty Township

42+39.8 R.R. spike found. Angle $1^{\circ}36'$ Lt.

O.K. Shick
 D. Lewis
 J. Cino
 H. Nabestine

57

Close A James
 30.45 A.

42+39.8
 Iron Found
 $1^{\circ}36'$ Lt.

Hare Homes
 Inc.

Lowell H.
 Huber
 1.00 A.

R 40+55.8
 347.62

40+55.8
 Harrow tooth
 Found

Dennis E.
 Berry
 4.50 A.

R No Fence
 397.01.3

Paul R.
 Bissell
 2.15 A.

Surveyed by
 O.K. Shick

397.01.3
 Iron

E 1/2 Sec. Line
 16 1/2 A

37+24.3

37+03.8

3477

INDEXED ON MAP

L.H. No. 18
Liberty Township

See PG. 65 FOR REVISED
ALIGNMENT STA. 53+39.5 To 57+41.9

53+39.5 P.I. Iron Found - 2°-03' Rt. - Prop. Line

50+58.6 R.R. spike found - Prop. Line

48+57.9 R.R. spike found Prop. Line

46+49.8 R.R. spike Prop. Line

45+33.8 R.R. spike Prop. Line

58

JAMES
Suttons
56.20 A.

Theodore Filio

3.17 A.

Surveyed
D. Dodson

53+39.5
Iron Found
2°-03' Rt.

280.9

R 50+58.6
No Fence

10°-26'

A. McLaughlin
1.73 A.

Surveyed 11/15/57
D. Dodson

201.1

No Fence
R 48+54.9

32°-50'

Clare A. James
30.45 A.

R 46+49.8
24°-4'

0.63 Ac.

R 45+33.8

Have James Inc.

7.10 A.

3477

INDEXED ON MAP

L. H. No. 18
Liberty Township

65+55.8 P.I. Iron Found - $3^{\circ}02'$ Lt. Prop. Line

57+41.9 P.I. Iron Found - $1^{\circ}18'$ Rt.

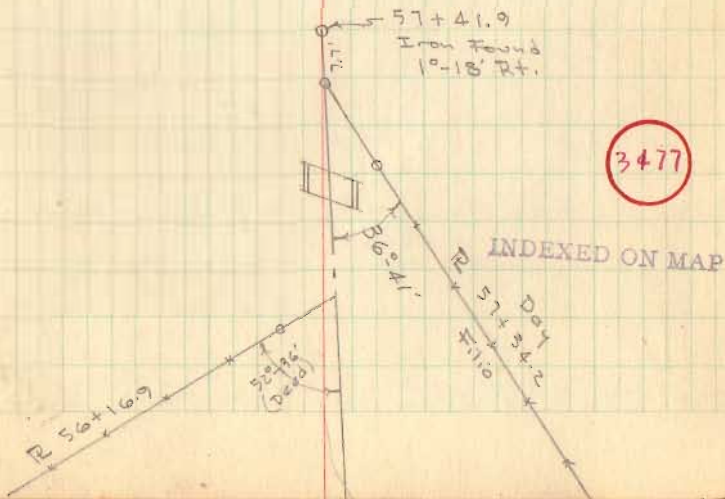
57+34.2 Prop. Line - R.R. spike Found

56+16.9 Prop. Line

65+55.8
Iron Found
 $3^{\circ}02'$ Lt.

John R. Williby

James H. Day
42.434



L.H. No. 18
Harrison Twp.

SEE PG. 66 FOR REVISED
ALIGNMENT Sta. 65+55.8 To
73+25.82

72+22.87 R.R. spike Set - Twp Line - Lake Harrison

71+98.5 P.I. Iron Found - 4°-38' Rt. - C.H. #216

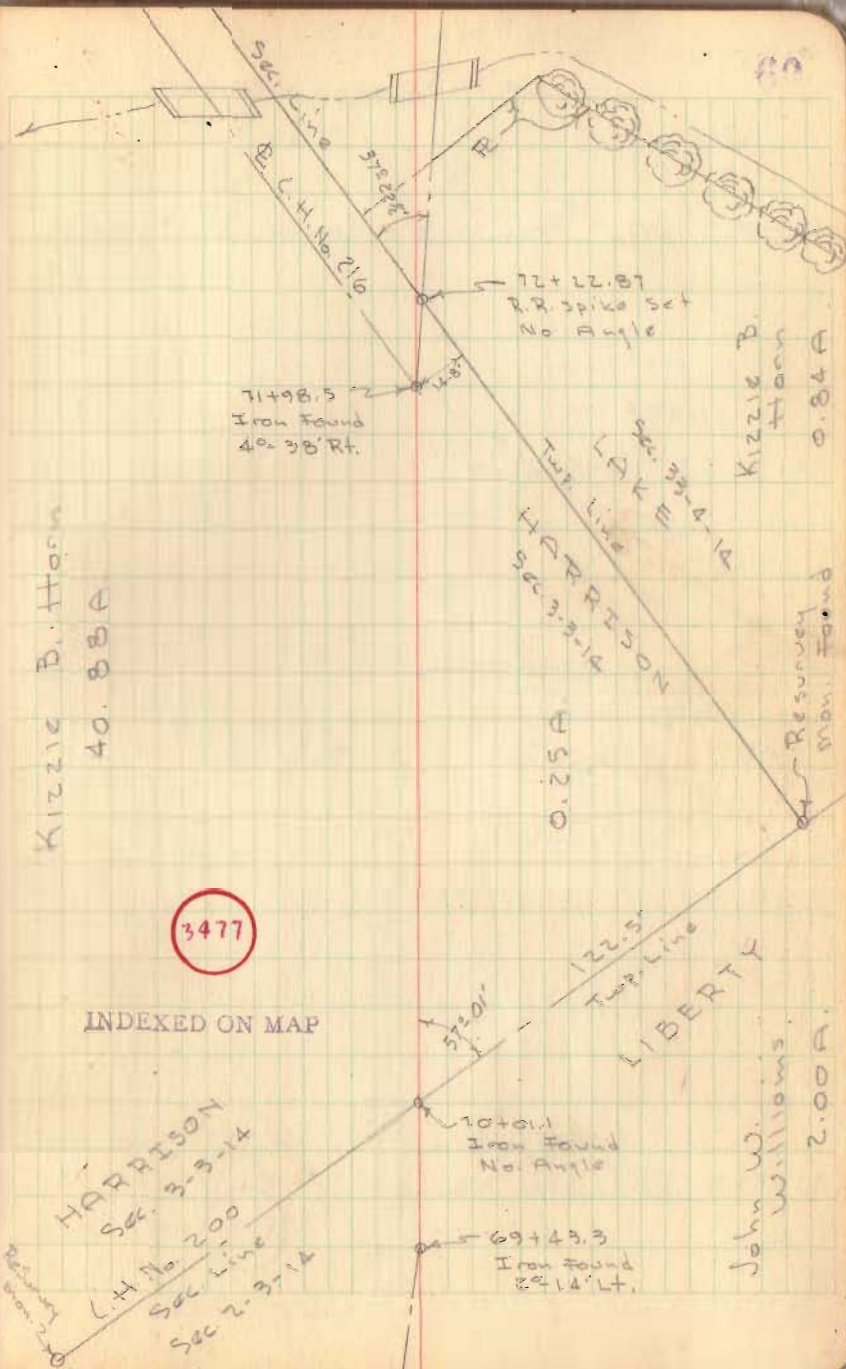
71+98.5
69+43.3

Total
69+43.3
57.8

Total
69+43.3
57.8

70+01.1 Iron Found - C.H. #200 - No Angle

69+43.3 P.I. Iron Found - 2°-14' Lt.



C.H. No. 18
Lake Township

96+89.5 P.I. - Prop. Line - Iron Found $0^{\circ}-34'$ Lt.

94+58.5 Prop. Line

90+91.5 Iron Set - $0^{\circ}-32\frac{1}{2}'$ Lt.

77+57.5 P.I. Iron Found - $1^{\circ}-27\frac{1}{2}'$ Lt.

61

96+89.5
Iron Found
 $0^{\circ}-34'$ Lt.

F.V. Lile
54.60 A.

(350
ft. deep)

Catholic
Cemetery
vol. 67/247

R 94+58.5

90+91.5
Iron Set - Searched for
old R.R. spikes, did not find.
 $0^{\circ}-32\frac{1}{2}'$ Lt.

Lesta Hageman

Lesta Hageman

3477

INDEXED ON MAP

C.H. No. 18
Lake Township

115+47.91 P.T. (Back) = 115+70.19 (Ahead)

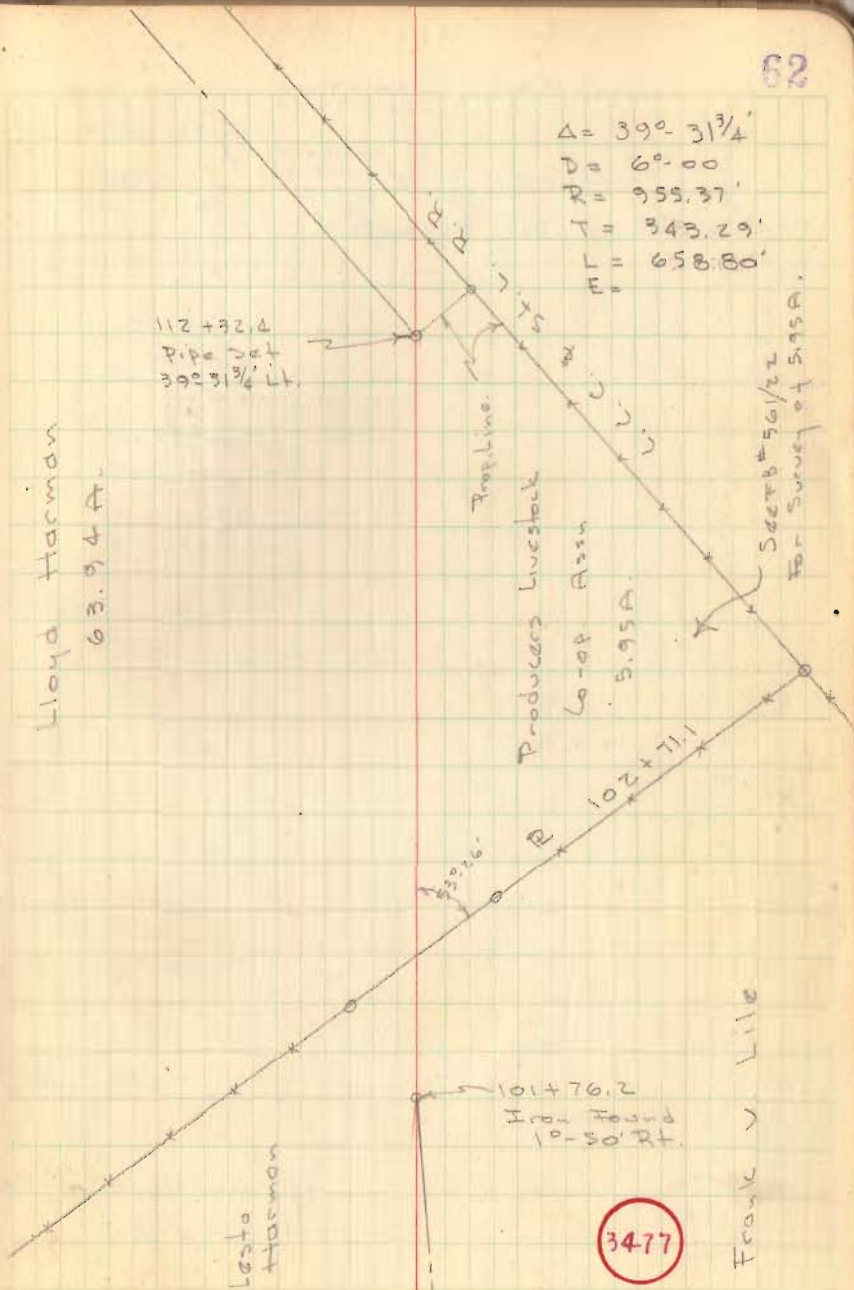
112+32.4 P.I. - Searched for pipe, did not find, set
3/4" pipe

108+89.11 P.C.

102+71.1 Prop. Line

101+76.2 P.I. Iron Found 10'-50' Rt.

62



L.H. No. 18
Lake Township

131+40.4 R.R. spk. Set. & L.H. No. 11

Sec.
Line

L.H. No. 216

Resurvey Mon.
Found

O.K. Shink
J. Lind
J. Lewis
W. Notch

6/60

63

Sec. 34-4-14

L.H. No. 11

lower
step

131+40.4
spk. set

Sec. Line

16.3
261.9 1/2
87.20E

Fred D.
Hurst
0.90A.

See #8 #56/22
for survey this
tract
243.0'

R 129+61.0

Freeman R.
Dick
2.10A.

R 127+40

W. Hayes
Corwin
13.09A.

R 117+87

Lloyd Harman
63.9A

Prop.
Line

Re Survey Mon.
Cop out

L.L.C. & St. L. R.R.

3477

INDEXED ON MAP

REA CEMETERY
 BLOOMFIELD TWP.
 SEC. 27 T-7 R-8

RESURVEY OF LOTS

| DEED VOL | PAGE | DATE |
|----------|------|-------------|
| 32 | 231 | June 1857 |
| 59 | 414 | Nov. 1879 |
| 87 | 570 | Oct 14 1889 |

LOTS STAKED AS SHOWN ON W.A. GINN'S
 PLAT DATED 1891, AS DRAWN BY H.D. NOTESTINE
 IN: 1929

See F.B. # 598, pg. 61 for C.H. 13

meas. from post as
 shown for C.H. # 13

C.H. # 13

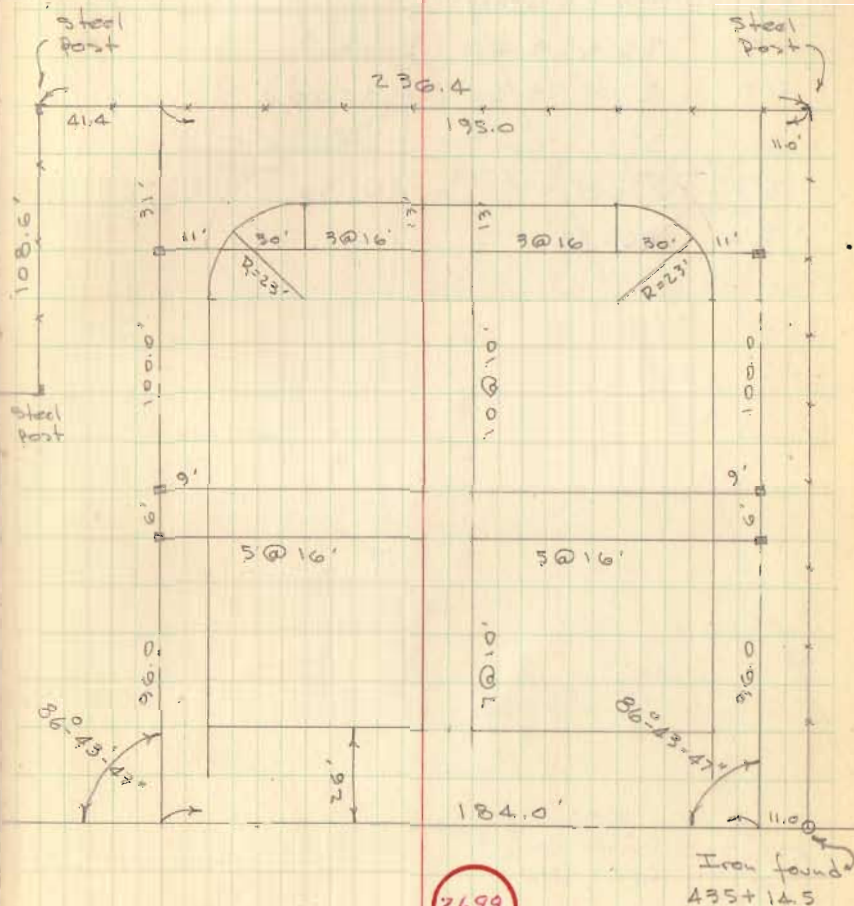
Dug for Hub
 Sta. 429+40
 Did not
 find

Dodson
 Cline
 H. Notestine
 J. Hower
 T. Madden

Sept. 8-9, 1961

64

□ = Hub Set



INDEXED ON MAP

REVISED ALIGNMENT

C. H. 18

STA 53+39.5 To 57+41.9

PI 54+95.73

PC 54+11.96

PT 55+79.46 (Back)

PT 55+79.34 (Ahead)

$\Delta = 3^{\circ} 21'$ T = 83.77

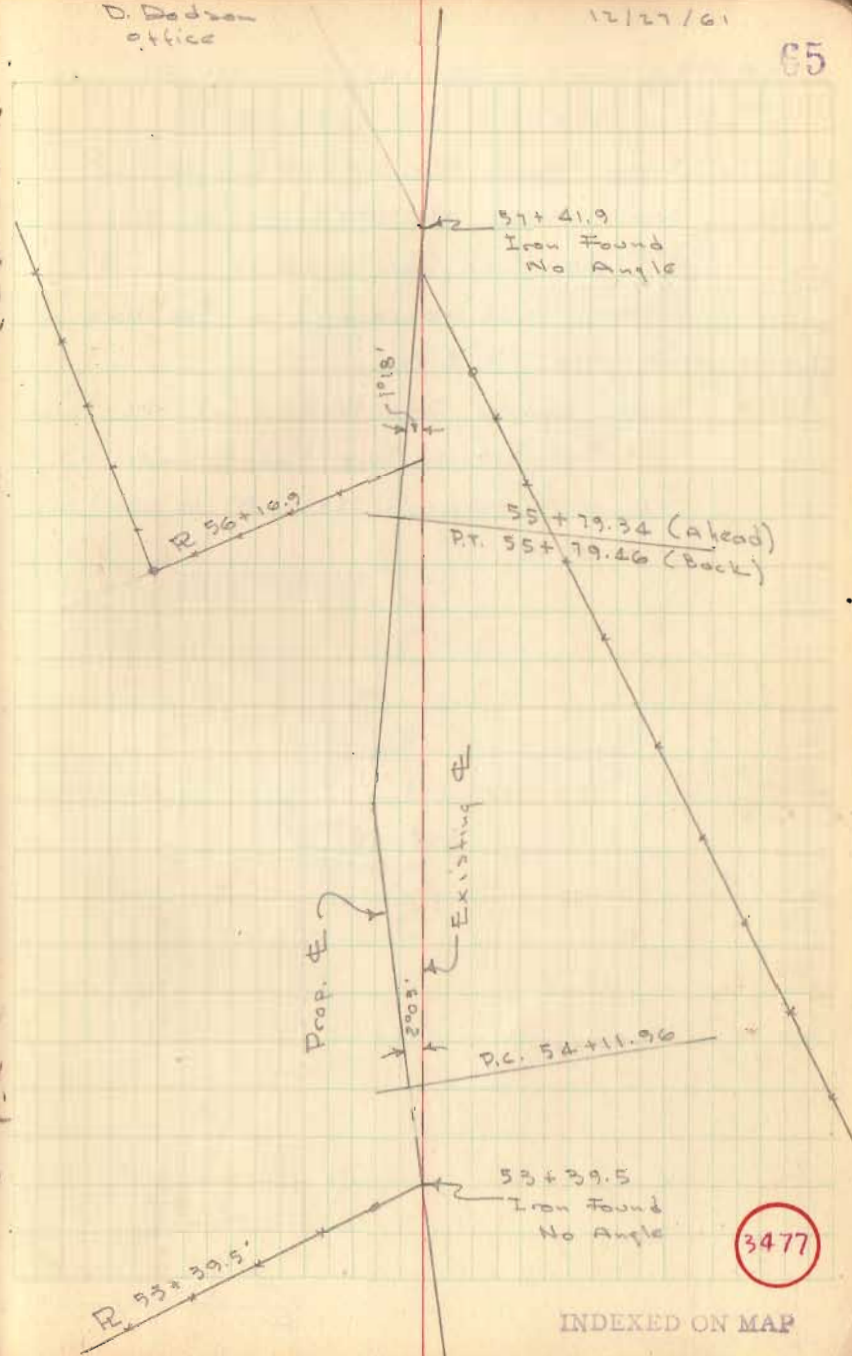
D = $2^{\circ} 00'$ L = 167.50

R = 2864.79

D. Dodson
office

12/27/61

65

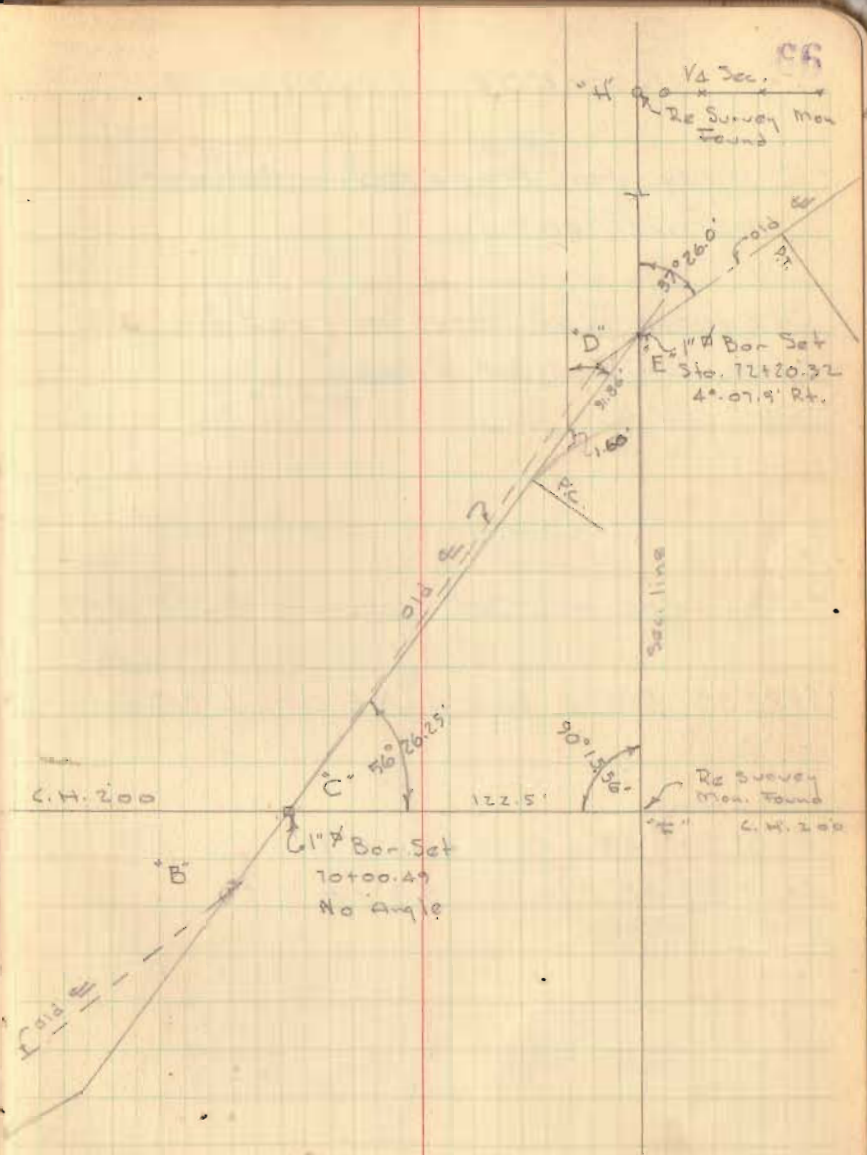
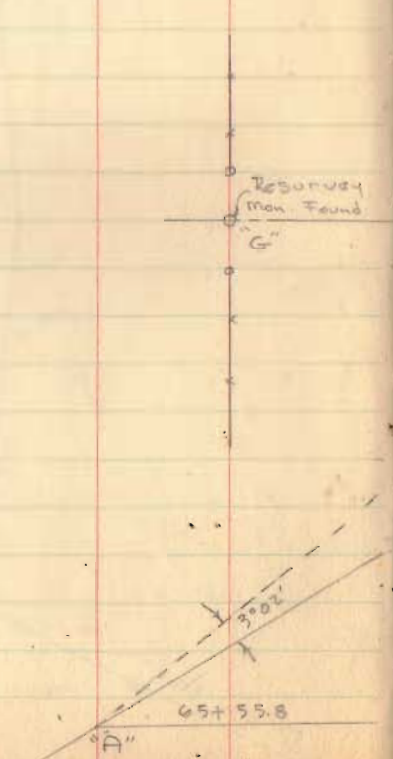


INDEXED ON MAP

REVISED ALIGNMENT C.H. 18

STA. 65+55.8 To. 72+20.32

- A = Iron Found Sta. 65+55.8 (old PI)
- B = Iron Found Sta. 69+43.3 (old PI)
- C = 1" # Bar Set Sta. 70+00.49 (Iron @ 70+01.1 not removed) on Sec. line between "F" & "G".
- D = Iron Found Sta. 71+98.5 (old PI - Pg. 60)
- E = 1" # Bar Set on Twp line between "H" & "F" (removed spike @ 72+22.87 pg. 60) and on old E.



3477

INDEXED ON MAP

C. H. 169
MONROE TOWNSHIP

Survey for Proposed Intersection
Improvement.

See loose leaf notes in road file 169
for BM's -x-sec. & topo.

5+78.6 Cpd. nail set, apparent ϕ S.E. 287

5+22.39 Stone Found - N.E. cor. J. Smith

4+03.2 48" C.M.P. - 16.6' lt.

4+02.3 48" C.M.P. - 5.9' rt.

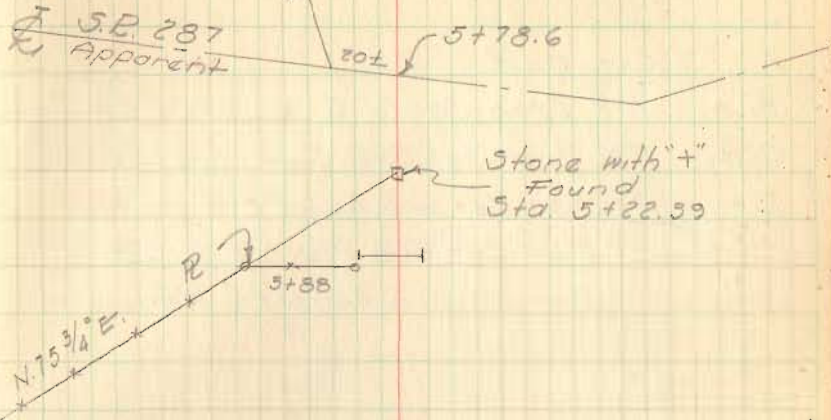
0+00 1" ϕ Bar Set @ angle in road

Dodson
Tevis
Cind π

Appr. ϕ
C.H. 28

5-25-62
65°
Rain

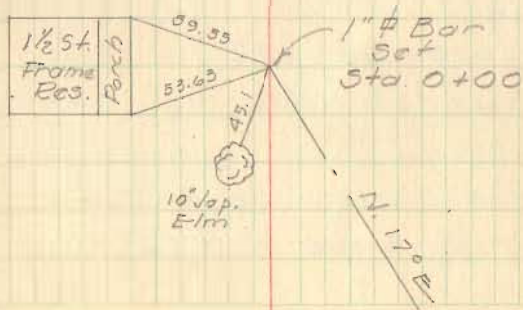
87



N. 38 3/4° E.

3478

INDEXED ON MAP



LOGANSVILLE STREETS
PLEASANT TOWNSHIP

- A = Cor. post
 B = 1" # Bar set @ E Center St. & N. line 47
 C = 1" # Bar set @ E South & E Center
 D = 1" # Bar set @ E Apple & E Main
 E = 1" # Bar set @ E Main & E Center
 F = 1" # Bar set @ E Main & E White Oak

Lots 33 & 34 Surveyed for
Township Trustees. Oct. 1962

1" # Bars set on lot corners as
indicated "o".

LOGANSVILLE

PLAT BK B, Vol. 2, Pg 29

LOTS - 66 x 132

ALLEYS - 16 1/2'

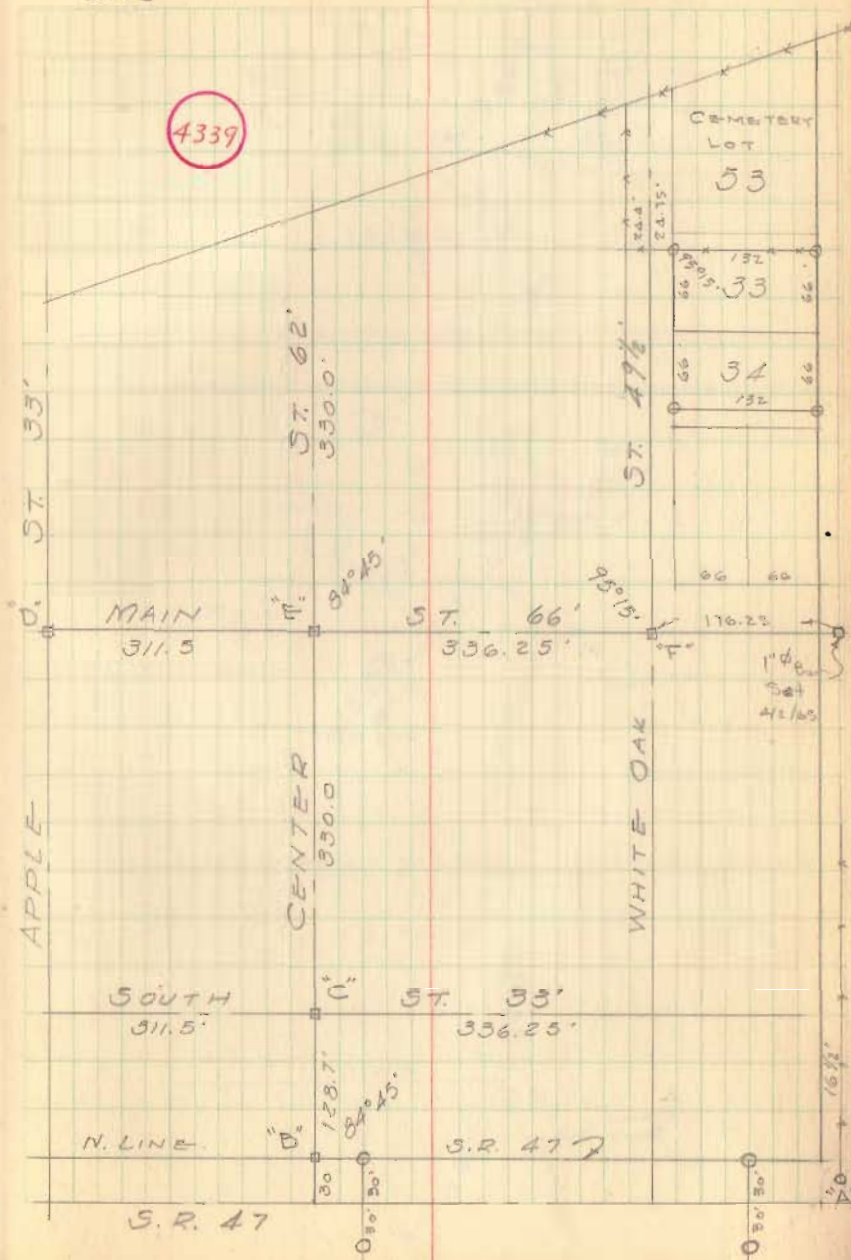
R/W stakes set on Main St.
from W. Oak east to alley

April 2, 1965 D.L. Dodson

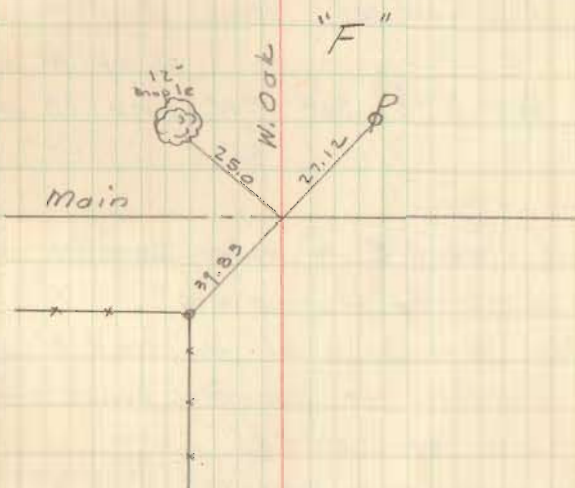
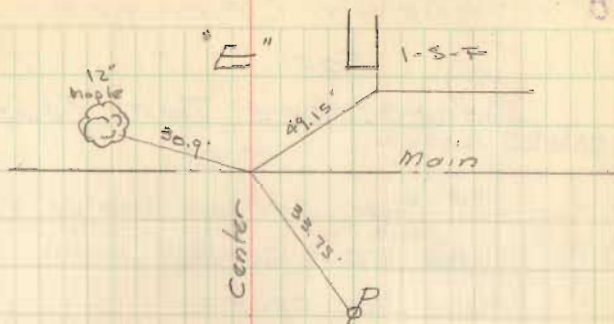
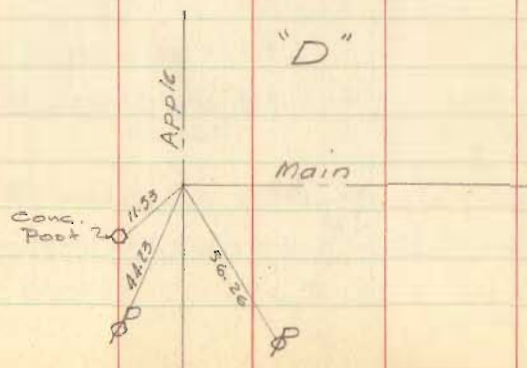
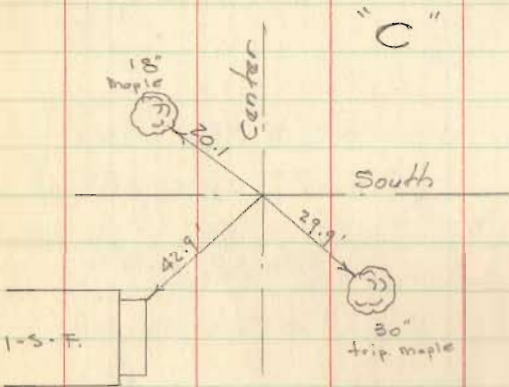
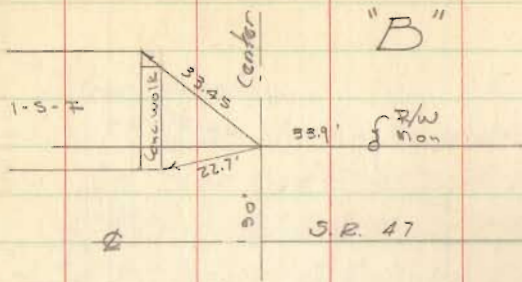
Dodson
Touis
Circ

Oct. 1962

69



LOGANSVILLE STREETS



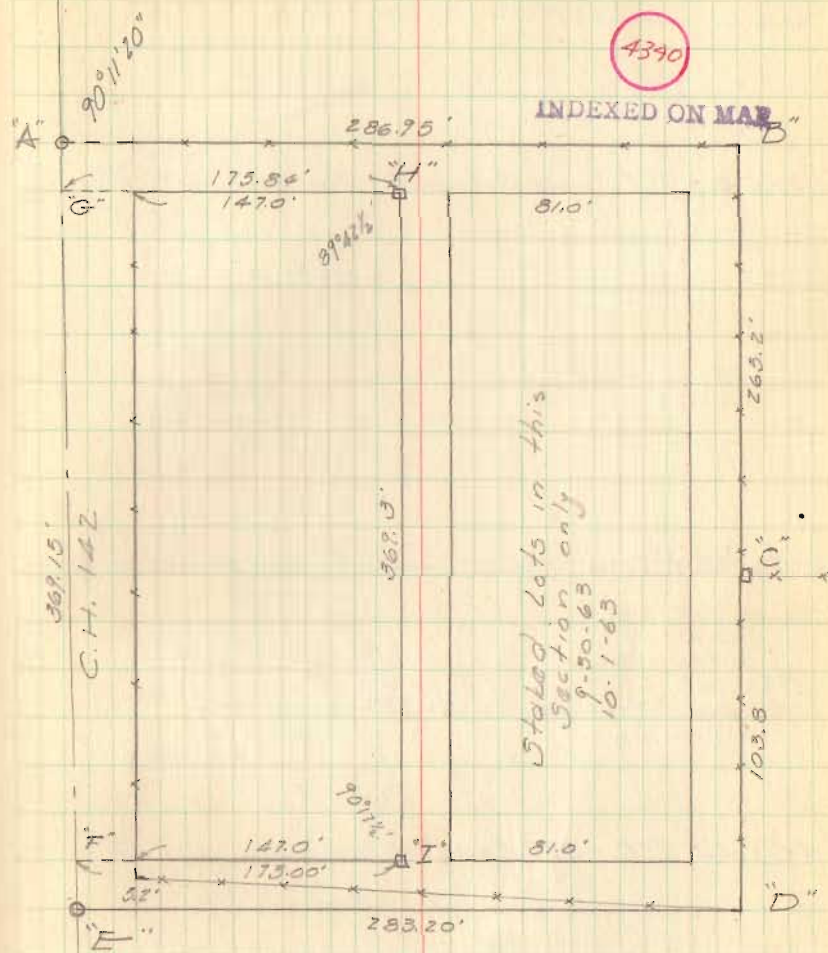
RE-SURVEY OF
HATHAWAY CEMETERY
FOR
BOKESCREEK TWP. TRUSTEES

- A = 1" ϕ Bar set on line of fence
 B = Angle iron corner post
 C = Wood cor. post
 D = Angle iron cor. post
 E = 1" ϕ Bar set
 F = P-K nail set 13.00' N. of "E"
 G = " " " " S. of "A"
 H = tld hub set - W. line 15' drive
 I = " " " " " " " "

Found line A-B to approx. parallel to
Kennedy S. line @ "C"
 Staked lots parallel to line "A-B" &
parallel to cemetery fence along E.
side of C.H. 142.
 Made line "E-D" parallel to "A-B"

9-26-63
9-27-63

70



See F.B. 497 pg 61-62 for
Survey of C.H. 142

C.H. No. 91
 R/W Mon. set @ 30' from E
 Washington Twp.

10+00 R.R. Spike Set on E - R/W Mon. @ 30'

6+86.98 P.T. - R.R. Spike Set on E - R/W Mon. @ 30' - Rt. Only

P.I.
 5+82.46 1" pin found - $\Delta = 33^\circ - 46' - 40''$ Rt.

4+71.42 P.C. - R.R. Spike Set on E - R/W Mon. @ 30'

1+00 R.R. Spike Set on E - R/W Mon. @ 30'

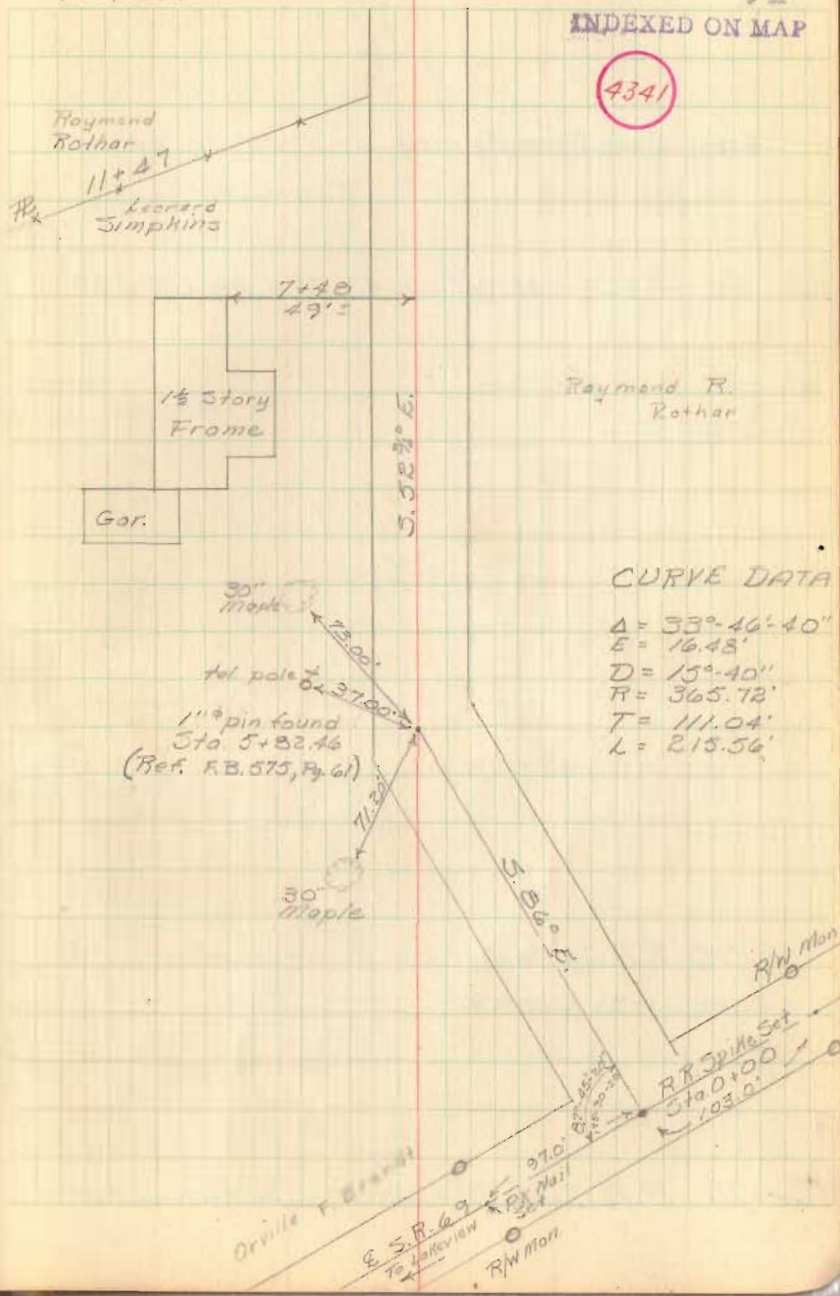
0+00 R.R. Spike Set

D. Tevis
 T. Waldrop
 P. Kaucher

6/16/64
 65° 71'

INDEXED ON MAP

4341



CURVE DATA

$\Delta = 33^\circ - 46' - 40''$
 $E = 16.48'$
 $D = 15^\circ - 40''$
 $R = 365.72'$
 $T = 111.04'$
 $L = 215.56'$

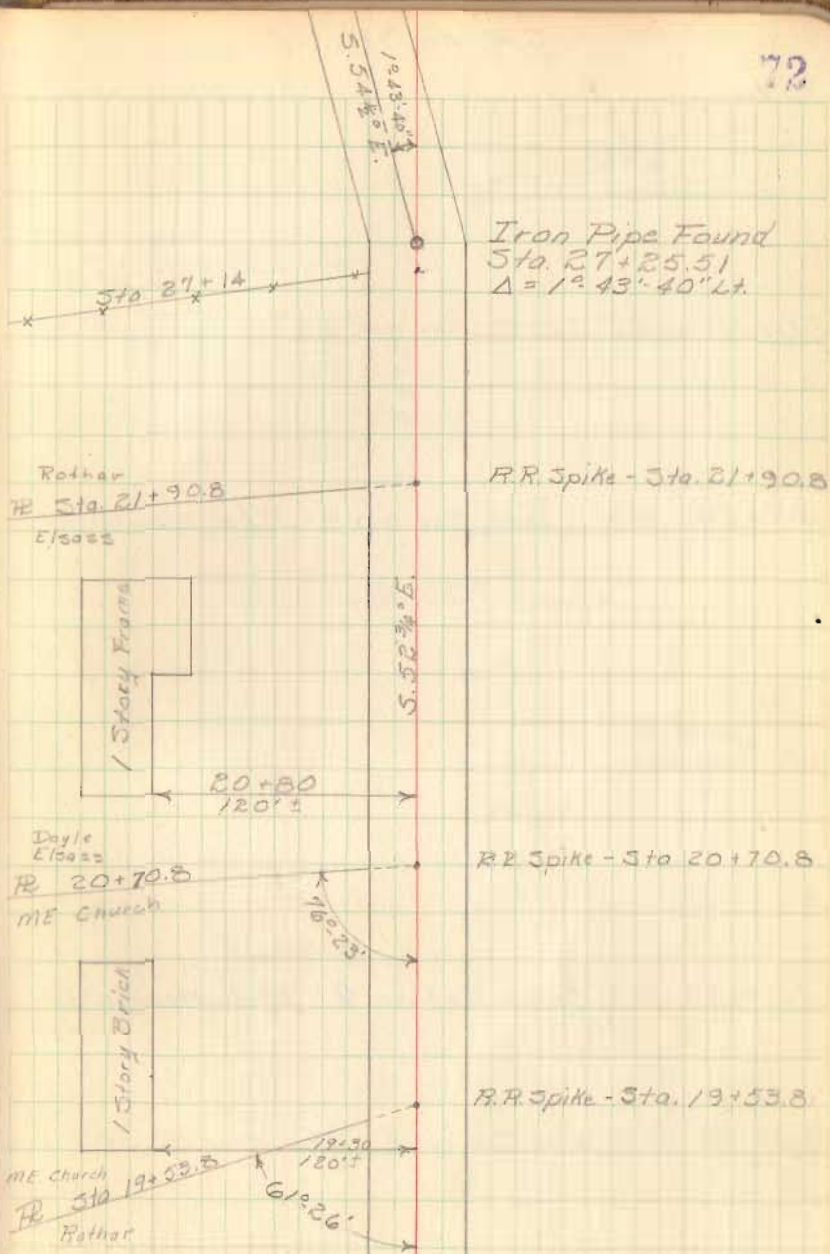
Sta.

27+25.51 Iron Pipe found - $\Delta = 1^{\circ}43'40''$ Lt.

25+00 R.R. Spike Set on E - R/W Mon. @ 30'

20+00 R.R. Spike Set on E - R/W Mon @ 30'

15+00 R.R. Spike Set on E - R/W Mon. @ 30'



C.H. No. 91

Sta.

50+00 R.R Spike Set on E - R/W Mon @ 30'

45+00 R.R Spike Set on E - R/W Mon @ 30'

40+00 R.R Spike Set on E - R/W Mon @ 30'

35+00 R.R Spike Set on E - R/W Mon @ 30'

30+00 R.R Spike Set on E - R/W Mon @ 30'

J. Cira
J. Cummins
B. Bixler
J. Cox

6/17/64

73

John Crockett

Sta. 51+31

Raymond Rother

Lillian Hoover

R.R. Sta. 50+98

Raymond Rother

5.54 ± 0.05

24" C.I.P. Sta 44+20

2 Story
Frame

42+31

Barn

41+34

70+98.82 R.R. Spike Found - R.C.H. 54 - Lewistown Square.

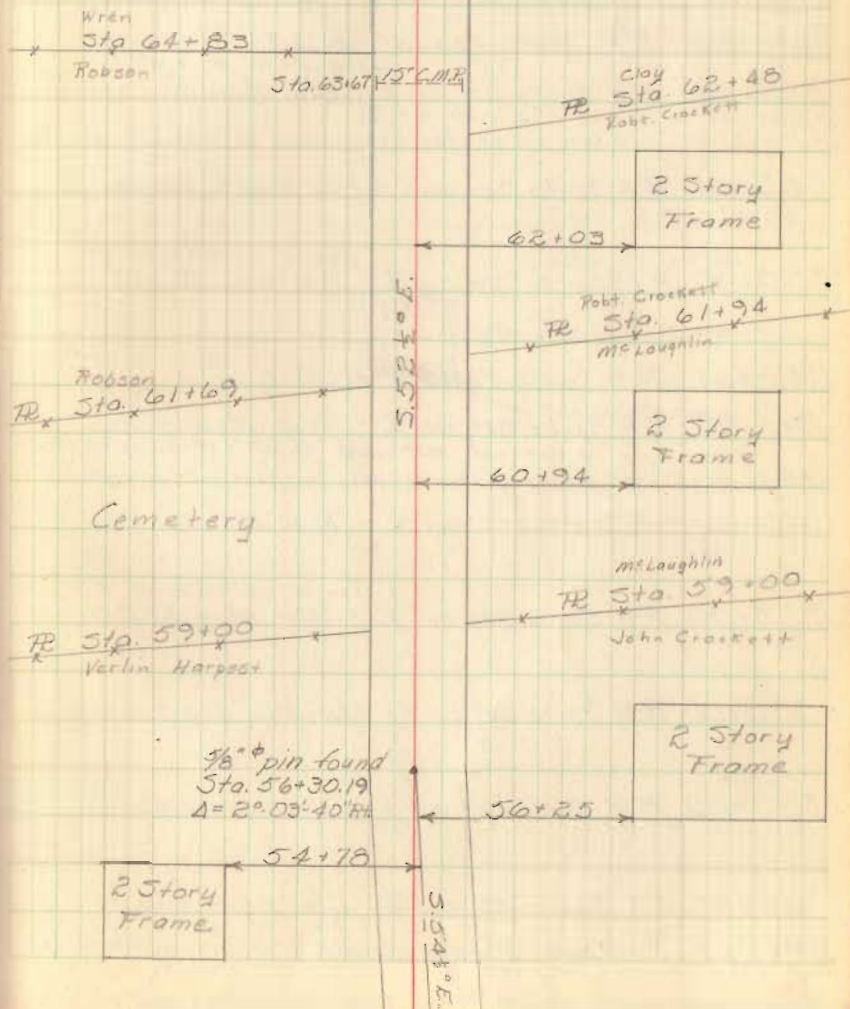
70+00 R.R. Spike Set on E

65+00 R.R. Spike Set on E - R/W Mon. @ 30' Lt. only

60+00 R.R. Spike Set on E - R/W Mon. @ 30'

56+30.19 $\frac{5}{8}$ " pin found - $\Delta = 2^{\circ} 03' 40''$ Rt.

55+00 R.R. Spike Set on E - R/W Mon @ 30' Rt. only

Sta. 0+00 of
C.H. 91 Survey
93 shown F.B. 502, P. 41R.R. Spike Found R.C.H. 54.
Sta. 70+98.82

C.H. No. 20 Checked Mon Log ^{4/24/64}
From C.H. 120 to Union Co. Line

Sta. R/W Mon. set @ 20' from E
found at 25' Lt + Rt
375+00 R.R. Spike set on E - R/W Mon. @ 20'

found at 25' Lt + 25' Rt
370+00 R.R. Spike set on E - R/W Mon. @ 20'

368+915 R.R. Spike Found - P.O.T.
found 25' Lt + 25' Rt
365+00 R.R. Spike set on E - R/W Mon. @ 20'

361+19.6 R.R. Spike Found - P.O.T.
found Lt + Rt at 25'
360+00 R.R. Spike set on E - R/W Mon. @ 20'
356+22.78 found 1" # iron on E
356+21.25 1" # bar on center found mens at 25' + 30' Lt + Rt.

355+00 R.R. Spike set on E - R/W Mon. @ 20' Rt. Only
found Lt. + Rt. at 30'
350+00 R.R. Spike set on E - R/W Mon. @ 20'

345+46.1 R.R. Spike Found - P.O.T.
345+00 R.R. Spike set on E - R/W Mon. @ 20'
+ 25' 25' 1" # bar set, mens. set at 25' + 30' Lt., found Lt. only
343+18.75 1" # bar set on E Mens set at 25' + 30' ok
340+00 R.R. Spike set on E - R/W Mon. @ 20'

found Lt. + Rt. at 25'
335+00 R.R. Spike set on E - R/W Mon. @ 20'

330+00 R.R. Spike set on E - R/W Mon. @ 20' Lt. Only

325+00 R.R. Spike set on E - R/W Mon. @ 20'

320+00 R.R. Spike set on E - R/W Mon. @ 20'

319+21.7 3/4" Iron Pipe Found E C.H. 120 - Δ = 0° 01' Rt.

Note: Stationing cont. from F.B. 701, Pg. 62

D. Tevis
T. Waldrop
P. Kaucher

7/24/64
88° 75

Note: For Topo
Notes See
F.B. 646, Pg. 64

INDEXED ON MAP

4342

E. E. Rail
E. W. Rail

Sta. 351+48.20
Sta. 351+43.25

Sta. 346+54.8



Br. No. 20-659

Sta. 345+88.8

N 83° 30' E

Sta. 319+21.7

3/4" Iron pipe found
E C.H. No. 120
Δ = 0° 01' Rt.

C.H. No. 20

Chart Mon.

Location
1 April 1965 C.H.

Sta.

431+91.3 Found bent iron - Replaced with 1st pin - Line
Co.
found 25' Lt + Rt

430+00 R.R. Spike set on E - R/W Mon @ 20'

found 25' Lt + Rt

425+00 R.R. Spike set on E - R/W Mon @ 20'

found Rt. only 25'

420+00 R.R. Spike set on E - R/W Mon @ 20' Rt. Only

found 25' Lt + Rt

415+00 R.R. Spike set on E - R/W Mon @ 20'

found 25' Lt + Rt

410+00 R.R. Spike set on E - R/W Mon @ 20'

408+39A R.R. Spike set on E - P.O.T.

found Lt + Rt 25'

405+00 R.R. Spike set on E - R/W Mon @ 20'

found only Rt 25'

400+00 R.R. Spike set on E - R/W Mon @ 20'

found at 25' Lt + Rt

395+00 R.R. Spike set on E - R/W Mon @ 20'

found at 25' Lt + Rt

390+00 R.R. Spike set on E - R/W Mon @ 20'

found mon at 25' Lt + Rt

386+50 R.R. Spike set on E - R/W Mon @ 20'

385+76.2 1st pin found E CH 142 - $\Delta = 0^{\circ} - 18' - 20''$ Rt.

385+00 R.R. Spike set on E - R/W Mon @ 20' Lt only

380+00 R.R. Spike set on E - R/W Mon @ 20'

78

UNION COUNTY LINE

1st pin set
Sta. 431+91.3

N. 04° E.

C.H. 142

1st pin found
Sta. 385+76.2
 $\Delta = 0^{\circ} - 18' - 20''$ Rt.