

Chas. Austine Sewer.

Austine Mill & estate

Aug 1 - 1912

Cse O Huntsville pike N 8 - W

Cse 39' line 5 8 1/2 W

Austine pike 5 16 3/4 W



Commence stone in Huntsville pike at E. Tr Line (as designated by Henry Austine as having always been considered as corner). This stone is at west edge of gravel in pike in line with south ditch of road east, & in line with fence west.

— with Huntsville pike, N 8 - W

18.36 S end bridge floor over Charles

(Dist. clear bet. houses = 24 1/2 lks)

Sewer line = 6 2/3 lks E. of W. turn at S. end of bridge

18.33 line fence, E. supposed to be S. line old mill road.

19.30 1/2 N. end W. floor

20.21 O stone arch at rail road

24.54 (near) intersection O line Austine pike

25.93 set quarry stone with X on top a brick bats.

(Producing this line 17.43 further strikes iron bar on NW & orig Austine track)

This stone planted where iron bar is called for in deed, but could not be found. This stone O gravel & in line with Eusey's fence, west.

25.93 + 1.30 = 27.23 = NW & orig mill track

— N 8 1/2 E.

0.60 set quarry stone with X and brick bats at place where iron pipe was torn out by road grader in O Austine pike.

219

— N 16³/₄ E, with \odot Austine
pike.

at 18.95 stone in E wheel track
of pike at N. line Austine land
& NE \angle of tract \odot sold by Austine
to Fred Reer.

at 0.98 set stone - on line Mill tract.

North line

offset S. 10'

N 82¹/₂ - E

14.00 \odot Cherokee

24.60 Black Hawk at SE \angle Kern

15.62 W. fence RR H-of-way

— with W. line fence - O.E. H-of-way
S 23 E

0.12 cross branch

8.67 Mill race

16.23 \odot Fred Reer - intersects
Cherokee line west of fence

28.70 Spring branch

45.40 set stone in \odot road on
Lsr Tr line & in line with
W. fence line. Stone
with X. & per glass bottle

— with Treaty line & \odot road
S 83¹/₄ + W

35.99 Stone at Huntsville Pike

219

Mill Property - Anstine Surv.

See Deed - Vol 45 p 522
Aug 6 1867

Start. O Huntsville pike at 27.23
page 133.

S 7 6 + E

— 1.08 set long quarry stone
with X & brickbats in O Anstine
pike. at SE of Nuss tract.

5.50 (= 22 rods) stake

Set quarry stone with X & brick bats
Note - This stone is 98 lbs from stone
at 18.95 p. 134

5.50 - 1.08 = 4.42 net len. North line

— S 7 1/2 E

1.95 (7.80 rods) stake at N bank race

Set quarry stone with X & brickbats

— along N bank of race S 67 E
5.05 (= 20.70 rods) stake N side of race

Set flat quarry stone on edge -
X mark on top - brick bats

— S 16 1/2 W

5.70 (22.80 rods) stake at S edge of creek

Set stone & bricks

219

— offset $6\frac{1}{2}$ E
~~5 1/2 E~~ — 1st chain

N 7 1/4 W N 75 3/4 W

at 7.70 drove iron bar
 at S. end end of Bridge at pile

Fixed SW c of Mill Property at
 S. end of bridge at pile.

Drove 1st pile 16" long.

offset S 6 1/2 W 1st ch

— West line with 0 pile
 N 8-W to begin.

Length west line:

27.23

18.36

8.87 chains

Allen Austine	Admr	2 da
Henry Austine	do	1 da
Lewis Kerr	ax	2 da
K. P. Leebert	do	2 da

\$150 per da. each

Allen Austine - P.O. Huntsville
 Tel
 Austine Bros - Huntsville

Make record of Survey
 Send Description with average as it is.

219

Jan 10 1913

Survey for Benthon Porron
1/2 mi W of Lutna

Start Stone S. line Sec, 2
m O. Sil. Lake pike.

Magn. W. N 85 W

17.42 found stone on edge
in first line,

43.28 Stone SW 2 Tully

At 17.35 Drive for iron bar
1" x 2" x 18" at SW 2 Porron
& SW 2 Tully

C. Ward
C. F. Sweden / checker

— N 4 1/4 E

at 92 links O. R. R.
~~N 69 1/2 E~~

With R. R. N 69 1/2 E (Dus @ tracks

at 22.00 Stake / pencil

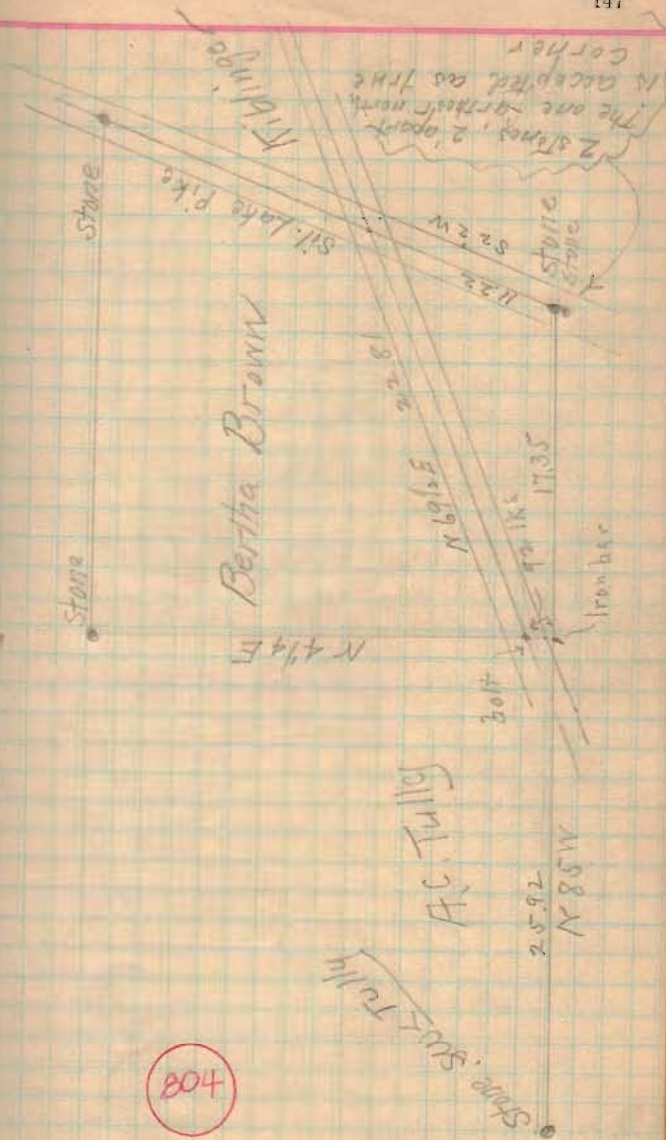
22.81 Volt - O R. R. & O Sil Lake Pike

SW 2 R. R. and Sil Lake pike -
47° 35'

804

- With O Sil. Lake Pike
S22W

at 11.22. Stone place of
beginning



Survey Line between Theo
Oria & Frank Wlder et al

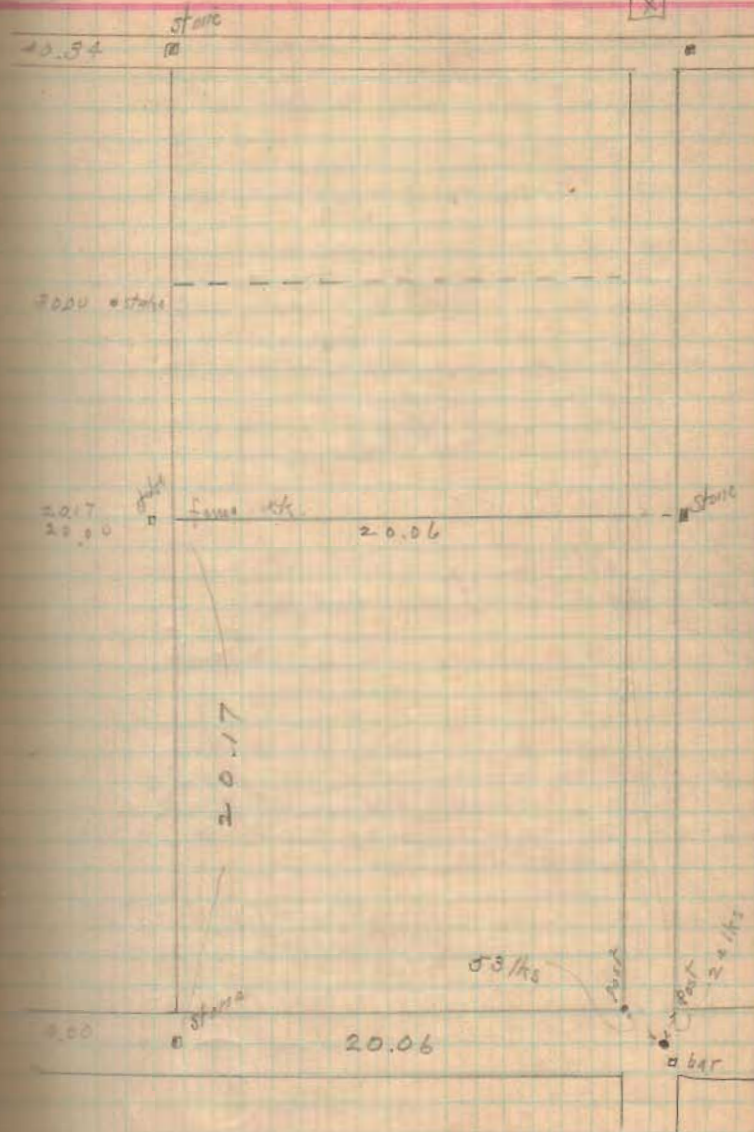
Jan. 28 - 1913
John Pence / checker
W. H. Hurley

Copy - Confirmation Report of
Partition furnished by Frank Wlder

The following described real estate
was decreed to Emma Wlder -

20 acres off of the South side
of NE 1/4 of NW 1/4. Sec 16 -
T. 7. South Range 8 East"

7071



3-14-13

Sam'l Huber Surv.

Sec 5 26 T2 R 14 Washington Twp

Start stone in Sec Line NW \angle Huber
offset 8' north. Boreash - cant see.Meas E. 1991 new fence
line about Sec - Stake 12 $\frac{1}{2}$ ' S of
anchor post. = SE \angle S.W. qtr Sec 6about Lee identifies this stake as set
by surveyor 14 yrs ago.

Offset S. 8.

Start at this stake & continue east.
calling this stake 0.0040.24
19.91
20.33584 $\frac{1}{2}$ E

Set temporary stakes for dist at 20.33

Set 1" galvanized, 99s pipe at correct \angle
28.04 stone not in line & not set by surveyor
marking SE \angle Lee31.64 rail fence S - (stone not found) E. line
Lee's 13 $\frac{1}{2}$ ' = Set stake in correct line40.46 stone - SE \angle Sec 6 = NE \angle Sec 5

8027

Start at 99s pipe [20.33] offset WZ4

[This pipe = 15' S. of old fence row]

S5W

12.96 = fence E. = S. line Lee's 13 $\frac{1}{2}$ ' =21.07 = fence W SE \angle Sam HuberSet stake at 40.30 from SW \angle Huber
(See next page)[Note - if original meas. for East line
started at old fence row at Sec. line, this
would make Huber's dist about right]

21.07 + 15ft = 21.22 [15ft = 22 lks]

12.96 set stake in fence line - 24' E
of offset lineAlso set stake for corner [SW \angle
Lee's 13 $\frac{1}{2}$ ' = from old wild
crab witness. N4 $\frac{1}{2}$ E - 14/65]The corner set from wild corner
in E & W fence row, but 9 lks E
of stake set from offset line.Stake as set = 14' E. of present
rail fence.

S. line Huber

Start Stone SW \leftarrow Huber

meas E.

40.30 stake for dist, SE \leftarrow Huber

this stake is $17\frac{1}{2}$ lks. E of
E. side anchor post

Albert F. Lee } Delgraff R.F.D.
Samuel Huber }

1208

Sec 6

Stake
Sec 6

Sec 5

Stake SW \leftarrow Sec 6

Stake SW \leftarrow Sec 6

Stake

21-foot