

4
Standard Oil Co.
Bellefontaine, Ohio

Suggestion for field work.

= Line # 1 =

Produce S. line Water St. westward
to Q- Sec. line, & mark intersection
at © C.S. & C. R.R.

= Line # 2 =

Measure north from point in R.R.
 $8' + 15' = 23'$ & run line parallel
to a 23' north of S. line St. This
marks the north line of Abner
Riddle's 15' strip, and also south
boundary of Standard Oil tract, as
discussed in deed from E. J. Post
June 6, 1894.

= Line # 3 =

Establish Q- Sec. Line, which will
probably be a line run straight
from bar SW of A. J. Miller & Co. factory
to a bar or gas pipe set for SW & Co.
at time of making Crauster Survey.

5
= Line # 4 =

Take point on Q- Sec. Line, 132' north
of line # 2. This is NW \angle of
Riddle & Putan, 30' strip. Look
for remains of old post or post hole
at this point or else 30' south. Run
East to P.R. to point 122' (?) from line
2. (Dist as per deed = 141')

= Line # 5 =

Run line parallel to and 30' south of
line # 4. This is N. line of Standard Oil.

= Line # 6 =

Establish N. line Water St.

= Line # 7 =

Fix E. line 14' from © C.S. & C. R.R.

Locate all buildings, tanks, fences,
R.R. track, streets, pipe lines,
etc. etc.

1158

Water Ave - Min.

Main to Rwy = 60' wide
 Rwy to Plum Valley, 50' wide

The south line is produced west
 to Leavitts Add.

(Note: The lots of 10' seem
 to be all on the side from Rwy.
 westward.)

New monuments set at
 Main & Leavitts.

1158

Produced O Water from Main
 & Detroit. Set 2 spikes about
 4' apart in O st, opp W. line Std
 Oil lot.
 W. line from four SW \angle Std Oil
 W. line 24' 3"

Also bent nail in plank crossing
 between in Big 4 Main track
 near E. rail. W. line, inside
 of plank - 9' 4"
 wind and snow!

Run Or Sec. line between pe
 gas pipe at a. f. Miller also gas
 O. f. new pipe to gas pipe
 at SW \angle Coa in Cranston Surv.

Meas N. from O st = 20' & set
 stake with nail at SW Std Oil.

Also set stake and nail 75' N,
 for NW \angle Std Oil

At 30' further north found
 old post hole with boards in it.
 Run line NW \angle of 30 ft. strip.

Found this hole in line as run
 west line ok, check line
 a dist ok

N 6 $\frac{1}{2}$ E

Meas E from SW \angle as set
 along N. line water st.

at 143.4' = O. Main track
 C.S. & C.

Meas W. 14' from O track
 & set 8" spike from SW \angle
 Std Oil lot. Two spikes in

1.35' E. of inside of W. rail of
 siding. W. line: 15 $\frac{1}{2}$ " O bolt
 12" long, west 3.4' from.

South line = 129.4' from
 SW \angle to point 14' from O C.S. & C.

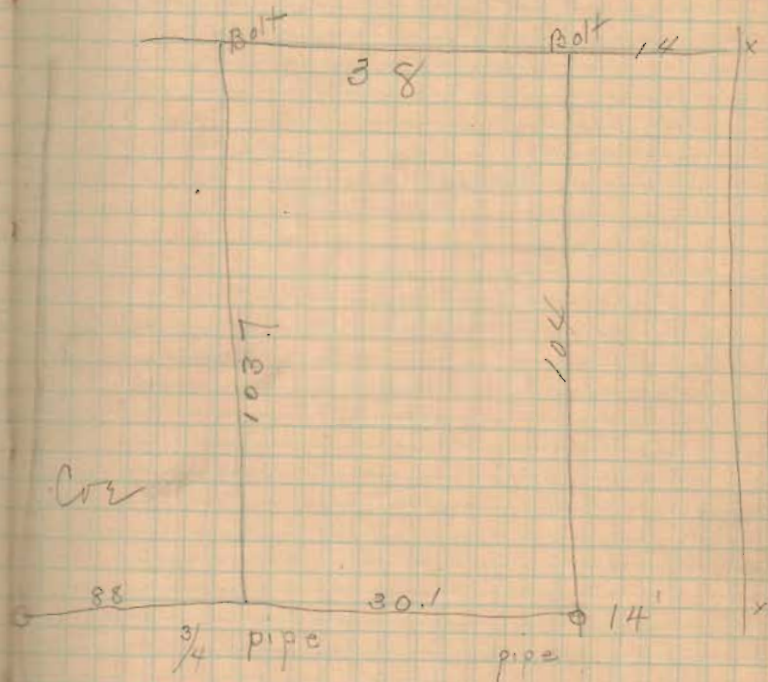
Cre S. line S 85 $\frac{1}{2}$ E

Measure N. 65' from spike
at EE \angle set bolt 14' W. of
O.C.S. l.

Low. N. line 134.6

Interior Angles

NE \angle	$89^{\circ} 15'$
SE \angle	$95^{\circ} 04'$
SW \angle	$89^{\circ} 07'$



1150

Survey for Walker Smith ^{and}
Harriet Mansfield at Russell's
Point Apr. 10, 1911

Isaac Isillenwater }
Lester Isillenwater } dec.
(disinterested)

Produced N. line Buckley = S. line
State of Ohio, eastward of a set
wooden stake in O Rio bank
road. Near NW of Kelly's room
Wit. NE of Kelly's Bldg, E of 17.1

Measure west on this line 42.0' &
set stake for east line on T&OC
H of way = 50' from O line
Wit. T&OC
Roadbed & marks of this
still plain in gravel lot of old
line, just S. of present depot
Bldg.

Wit for this 2^d stake:

This line continued east along
Kelly's Bldg 146.6' south of NE of
& onto T&OC. Depot at west
edge of windows on south side

Bore 1/4" gas pipe by stake.

Wit. 14" walnut N 37 3/4 W. 43'

also Wit. O Road T&OC. Siding 55.6 E - 42'

Line # 2

Start stake at E. Line T&OC

- S 29 1/4 E with said line

W 43.7 set hard pine stake
1" x 1/2" for intersection of E
- line T&OC, on being 27' from
O line Ohio etc.

Then a follow 27' from O
Ohio etc to Isillenwater S. Line

2 gave 5/8" bar with cracks on
upper end.

Wit. from this bar. to po stake iron
at Isillenwater S. line 27' from O Ohio etc
(page 19) S 33 E.
Bore by run of H of way = 516.5
See p 20.

Give 1" bar [1" on upper end] 30" long.
Wit 14" walnut N 63 W 76.8

this bar is 196.3 from iron bar
at NE of gas. Buckley.

1052

Apr. 20 / 1911

Center
 stake [Pole] Gillenwater / clear

Commence stake, \odot res. bank
 road.

— with \odot road S $55\frac{1}{2}$ E

at 306.0' drove iron bar in road
 at \angle Gillenwater & Himmelright.

This iron bar $\left[\frac{3}{2} \text{ " } \right]$ is about 18" S. of
 \odot gravel as travelled.

With 6" cottonwood S $35\frac{1}{4}$ W = 197'

\angle i.e. to \odot tree

at 1st = 39' to \odot side track

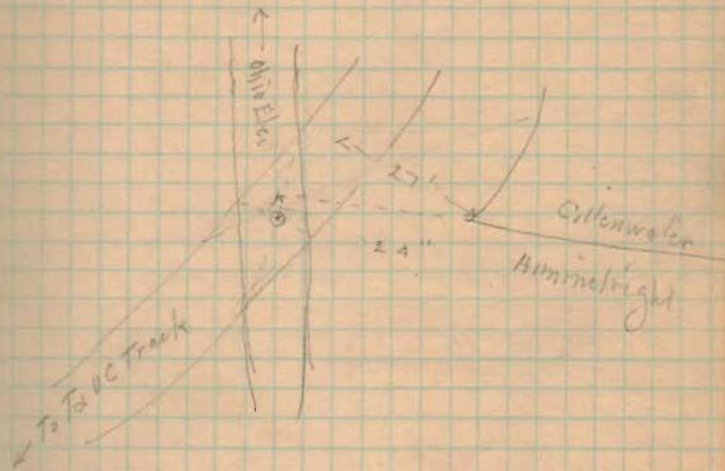
at 2nd = 78.5' " " "

— along line Gillenwater & Him-
 melright S $35\frac{1}{4}$ W

at 140.6' drove pc. strap iron
 $\frac{1}{4}$ " x 2" at point 27' at \angle from
 \odot of this elec. at-of-way

at 168.8' = \odot O. E. Runy & \odot short
 switch from T. & V. C.

Note this point is 24" N of \odot
 of \diamond when setting crosses
 Vol. 11 Elec.



1052

Follow curve of Ohio Elec,
at 27' from O of track.

at 100' = 27' from O O.E. & 24.3' from
O siding at stakes to each track

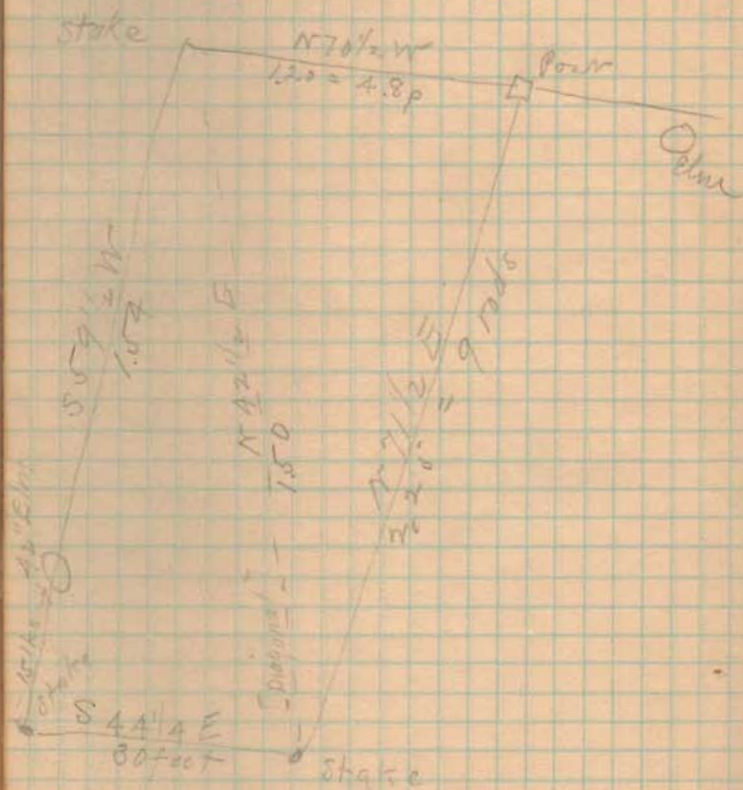
at 200' = 27' from O O.E. & 37.3' from
O siding

at 316.5' = pine stake described on
page 17.

Less T & O.C. siding, measuring
around curve on O line = 338'
from Sellenwater E. line.

1052

Res Paper - F. Wonders Survey
 Apr 25 1911
 G. W. Mattes chert.



Res Paper - cr $\$500$ on acct

McCulloch-Cordrey Survey.
 Deed. 3220 - Jefferson T.
 May. 23 - 1911

G. W. Godwin }
 Chas. Fitzgast } ch. ex.

Found stone at W. corner of M^cC -
 11 3/4 a. pc.

Cse - McCulloch - Riney line = S 68 1/2° - E
 (Died call for N 69 3/4° W.)
 Var. 1 1/2" L.

N 2 3/4° E, at 33 lks, set stake
 in pile.

- with pike N 69 3/4° E, at 6.87 stake
 at 6.37 - S 79° E -
 10.51 - S 72 1/4° E -
 14.00 - S 85° E -
 17.07 - Drive long iron bar for

center of 2 rod lane to South. set by
 agreement bet. McCulloch & Cordrey.

[Long for stone and crosskey in 0' pike at
 N E of Cordrey's 320's. dug hole 5' x 5' x 24"
 but did not find anything. Measure W. from
 0 of this hole - being in line with old fence
 line south - and at 12.49 came to stone
 bar as set & agreed & accepted.
 Wit for bar -

Large Walnut N 51 3/4° E. 115 lbs
 N E of foundation of no. S 24° W. 147 lbs

Found iron bolt, 1/2" thick at N E of Corner
 as set by E. A. Miller. Meas. east
 at 9.99' anchor post set for SW of
 McCulloch. Sherman Riney died
 eye for 4 rods. Seems to be 1 rod
 East.

Continued Meas east.
 12.54 = 0 wild cherry at NW of
 McCulloch's H. of way or lane

14.76 = 0 10" anchor post at NW of
 angle in lane.

15.393 = 0 12" thick 6' east of east
 side of lane.

Stake at fence post at S. end of lane
 5' lane near McCulloch's no.
 Near N. with 0 lane N 65° E (wire line)
 at 14.44 = McCulloch's fence on N. side
 of lane, just east of wild cherry, [12.55
 by meas. at top of this page.]

14.44 x 4 = 57.76
 Note - Cordrey, died calls for 57.3 p.
 W. Hamilton died to Dr. Riney calls
 for 59.2 p.

S 85° E

12.54 + 15 = 12.59 = 0 lane to S - E line
 Riney.

at 15.07 drive long iron bar, which is set
 by agreement between McCulloch & Cordrey
 for 0 of lane to north.

Wit: 12" Hick, S 86° E 16 1/2 lks
 9" Sugar S 27 3/4° E 26 1/2 lks

177

Commence at iron bar as set at
 < in in lane [being @ of lane to North
 (and N. side of lane to west)] at 15.02
 on page 33.

— following @ of lane as agreed
 only between M^cColloch & Cordrey.
 The width of lane to be over road
 each way from this line

N 8 1/4 E.

at 7.50 [30 rods] iron bar.
 angle N 16 3/4 E.

at 10.00 [40 rods] iron bar

with - 20" Sugar 39 1/2 E, 92 lbs

18" W. Elm. 54 1/2 W, 9 1/2 lbs

finish in at Medea old road

angle N 9 E

at 13.27 cross bridge over ravine

at 14.03 iron bar @ B. + 3. pile = 17.07
 of page 32

177

Being unable to find stone at NE < 4
 Covell's 32.55 a tract, & this next being
 an important land corner, a
 new stone was set, with X on top,
 surrounded with pec. broken glass
 bottles & set on top large square
 stone.

Dist. from this stone to iron bar
 set at 17.07 page 32 = N 8 1/4 W - 12.49

W. Dr. Blk. Walnut	N 5 1/4 W	46 lbs
18" White Walnut	S 38 3/4 W	85 lbs
12" Syc.	N 83 E,	134 lbs.

Start at above stone & meas. eastward
 with pile. S 85 1/2 E

at 10.47 @ stone arch at Goose Creek
 " 12.60 @ Cordrey's drive, south
 " 21.00 Stake

May, 25-1911

at 21.41 set narrow tooth, @ pile
 with - 18" Syc. N 53 1/2 W 84 lbs
 16" Elm S 39 1/2 W 64

— with W. line Carbogant, following old
 fence line which has been excavated for
 many years S 19 1/2 W

at 8.01 stone.
 16" Elm N 19 1/2 E 37
 Large Blk. Elm S 44 1/2 E 42

— along Arbogast line S 39 3/4 E
 (offset 50 lbs Right)

at 6.00 stake leaving
 20.09 + 24" Shell Hick at \angle to
 Arbogast in E. line 6450

$$20.09 + 2.01 = 22.10 \div 2 = 11.05$$

$$14.05 - 2.01 = 12.04$$

1/2 point along Arbogast = 4 lbs SE
 from the stake set above at 6.00

— along Sum. line S 18 1/2 W
 125' across branch of Horse Creek
 Note @ branch about 35' lower than
 ground surface at 0+00

8.30 anchor post SW \angle Small, NB \angle Fawcett

17.50 cross branch

19.00 cross spring branch

20.25 stake

20.41 at um fence to west

23.92 anchor post \angle Fawcett & Short, East

22.98 " " fence to W

33.09 post which McLaughlin says

is his 826

39.74 stone \angle Sum. 6450, 3137, 6449

~~Ray agreement between L. E. Cordell
 and J. A. D. McCulloch, the corner is
 set 4 feet south of present fence
 corner 4' - 6 lbs.
 20.41 - " = 20.35~~

~~at 20.25 drive 1 1/4" iron pin
 in fence line.~~

~~this agreement witnessed by
 W. W. Hoover
 Ches. Arbogast
 W. S. Bailey.~~

White bar: - 16" Sugar N 1/2 E 30 lbs
 8" W. Walnut N 84 1/2 W, 82 lbs

— westward
 50' S, 7'

Random - 7' south N 84 1/2 W

8.00 stake in Random

12.28 "

21.26 "

24.30 post - in fence line - [1/2 way?]

25.36 stake in random

33.59 fence to north, where iron pin
 formerly stood

Random = 31 lbs N. of corner pin
 for correction from random see p 39

Start at Blk. Wal, stump on
Cordrey, west from residence.
Low gone - in gully.

offset W. - 80 lbs.

Meas. South

Random: 80 W. - W. 86 - W

15.77 - line Cordrey - McColluck - W.
Set random stake. = 96 lbs. W.

wasting 17 lbs. dist = 15.77

16.05 stake in fence line

30.05 fence = 33.39 p. 87.

Random = 120 lbs W.

Wasting = 40 lbs. dist 30.05

30.05 d = 12.0020 p.

120.5 - 120.2 = .3 p = 5 ft short

Start post, 0 lane near McColluck m.

S 85 E.

at 11.09 anchor post at 2 McColluck
= 15.77 - page 88.

11.09 x 4 = 44.36 mts.

Connections - from p. 87

7' = 10.5 lbs.

31.05
41.5
wasting, dist = 30.39

33.39 | .88
33.39
46.10
33.39
127.10

8.00 x 120 = 9.92 1/2 lbs S + 7' N.
12.28 x 120 = 15.2 lbs S + 7' N
21.26 x 120 = 26.4 " 8 + 7' N
25.35 x 120 = 31.4 " 5 + 7' N
33.39 x 120 = 41.3

177

row bar - re-driven at 20.41

W^r (compute)

$\overline{N 85 \frac{1}{4} W}$ est true cor

$N 84 \frac{3}{4} W$

33.39 mark on large grass
boulders at S. side of anchor
post. fence to N.

Note this point is directly under
the E & W line fence, & in line
with O fence to North, & 2 lks.
S. of S. side of anchor post.

W^r double apple S of W, 8 lks.

Note! - the ax marks on this apple
are $4 \frac{3}{4}$ lks S, & E & W fence
& $6 \frac{1}{2}$ lks W, of O fence to N.

at 33.39 Random came out $22 \frac{1}{2}$ lks
N of fence line.

Northing = $22 \frac{1}{2}$ lks. Dist 33.39

33.39) 22500 (.0067

20034

24660

23373

Cor. = $\frac{2}{3}$ lks per chain

$N 85 \frac{1}{4} W$

8.00 x .67

12.28 x .67

21.26 x .67

25.30 x .67

33.39 x .67

HK,

5.36 lks

8.2 "

14.2 "

16.98 "

22.4 "

33.39

14.28

2 | 47.67

23.89

4

95.56

30.05

15.77

14.28

25.35

23.89

1.46

at 12.28 drove iron bar in
corrected line. by 18" sugar.

this sugar (ax marks) is 4.9 lks
N. of line.

8463 - 16" sugar - line has
blazed

177

Start stone. 8.01 bet. page 31

N 39 3/4 W

7.50 [30 rods] set stake.

Note this line calls for 111 rods,
while Arbogast calls for 81 rods
leaving 30 rods at this end.

— N 2 E

2.00 stake

— N 84 W

5.92 stake

this stake is 70 lks from spike
and near W. line 6450

S. O. Armstrong ⁷¹⁰ Brundige
 Survey Lane between
 Brundige & Akey.

June 16, 1911

Carl Newell, ch. cro
 W. B. Crockett

Start Meas at wire fence corner at
 SW \angle Brundige. also line old.
 below at N. line Sec. 5091 which
 is a stake has been down for at least
 35 years.

Meas. southwest along Brundige-
 Armstrong line.

23.75 branch

31.03 wire fence west. to Armstrong farm house

36.00 in line Armstrongs gate which is old
 iron stake under gate.

39.90 branch

50.00 stake in S. bank of work near SW \angle
 Armstrong

59.90 stone at SW \angle Akey

Brundige by dead: 145.2 p
 James Akey 92.8

4/92.8
 23.2

7106

4 $\overline{2380}$
 59.50

Additional notes from opp. page

36.10 @ wire old rail fence at north
 side of lane.

36.56 wire fence east. built by
 Armstrong & Akey on S. side lane

4 | 145.2
 $\overline{36.30}$

36.30 near @ lane = dirt called
 for by Brundige's dead.

36.28 = Stake set by Sawcett.

36.30 + 2.4 = 38.70 = SW \angle Brundige
 by dividing excess.

59.90

59.50

$\overline{40}$ lbs excess.

59.90 | 40.000 0 (.0066
 $\overline{38.940}$ 36.30
 20.960

1980

206

198

39580

.0067

23.2

134

201

137

$\overline{15594}$

24 lbs excess for Brundige
 16 " " " Akey

37.773 Nos. sides of lawn ←
38.19

7100

Armstrong - continued

Commence N.E. 3091. Took center
to rail fence past to line of
timber. Boundary fence after
300 yds moved toward E or S
just north.

Where S. along E. line June 3091

19.00 O rail fence east line
Armstrong - Akey

23.30 Cross branch

37.00 stakes for dist

37.98 wire fence east line
Akey - Alexander

61.92 found brickbat under fence
to 83 & Akey

condigs -	25.3	4/15/13
	12.6	37.83
	151.3 p.	
Akey	94	
	4 2453	p, total
	61.33	

61.92 - 61.33 = .59 less area

6192 | 59000 (0095)
 55728
 32720

3783

0095

3783

34047

359385 = Prunding excess

94 p = 2350 ch

2350

0095

2350

21150

233250 = Almy excess

3783

32

3819 = Prunding Excess by
 giving him his share of excess in
 Council on p. 49

Kanis L. Almy's deed east cell
 for 76.14 p.

4) 76.14

79.035 ch.

Apr. 1907

7186

56
Baughman Surv.
June 22 1911

Carl Newell / de. cr.
J.S. Knapp

B.S.L. transit

Start at Stone (supposed to be W.
line Quisen Corp.) at S. line
Big 4, Rt. of way, at N 2 & 13,
Rehook whet.

Set west 8' N 3 3/4 E

0+76, 0 Main track Big 4

1.49 0 pile
1.85 1/2 s. side anchor post SW of Basora

31.09 Stone in Sec. line bet 29 & 30,
in S. line Robinson & NW of Basora

p+52 Set pointed boulder in pile
at rt. of way line, & surrounded
same bunch several feet.

W.D.

SW of siding, Basora vs. N 89 E, 113 1/2 ft.

Corrected Cse this line →
= N 4 1/2 E (near)

170

with line Sec 29 & 30

N 88 3/4 W

10.00 stone, SW of Robinson.

with W. line Robinson

Random. Set 16' W N 5-E

27.49 random is 13' W of 0 on fence
at top of hill. Stake in random

27.49 Tallet left 1° 15'

23.4 stake in random 20' from 0
at rail base

44.03 30" Hackberry in line.
Random corner 19' W of west side
of track.

45.00 S. edge of H.O. Miami River

In fence line runs to E. side of Hackberry
which is established as E. line Baughman

Along Miami River

Start meas. at E. side of
Hackberry of line on p. 57.

Offset 150 ch. S of river to give
clear of brush

chain on random N 86 W

809, set stake in random
170 from water's edge

S 66 1/2 + W

12.15 set stake 45 lks from
water's edge

S 72 W

20.00 stake in random 41 lks from H₂O
25.26 " " " 90 " " "

S 66 3/4 + W

30.00 stake in random 15
32.00 " " " 16 from H₂O

S 88 1/2 W

37.03 stake in random

N 61 W

43.33 = 2 lks N. of \odot 30" brack
on W. line of Sec 30.

This brack is on line with av.
rail fence south & is 166 lks
S. of river.

Along W. line Sec 30.

Start at river follow old
rail fence row as far as can.

Random S 5 W

at 22.15 random = 16 lks W of fence

$$\frac{.16}{22.15} = .0072 = \text{Tan } 25'$$

Corrected Cce = S 4 1/2 + W

166 30" brack (see opp page)

22.15 S 5 W [wire fence]

36.67 ston < Secs 29, 30, 35, 36

Along line Sec 35 and 36

N 85 1/4 W

15.50 stone at NE² Neath

— Along E. line Howard

S 4 1/2 W

15.95. \odot Quincy \odot Sidney pike
(dug for stone - see find)

Cse pike . N 84 E

30.28 drove iron bolt with 2
nuts on end in \odot Big 4 R.R.

— with \odot R.R.

S 85 + W

7.34 Drove bolt, \odot track
in line with wire fence S,
[stone in fence line at S. line
H-of-way.]

(Cse along R.R. taken, in field
25' S. of H-of-way fence)

— with E. line Haines

S 4 3/4 W

6.98 anchor post in N. line Hill

S 87 1/4 E

0.64 stone set by J. Wonders at
NW \angle Slagel

11.65 stone set by J. W. NE \angle Slagel

22.69 stone NW \angle Stephenson

S 86 - E

42.90 temporary stake in hedge line
near NE \angle Stephenson

Edward Baguleware and Jas. Wilkinson
state that this hedge was put in line of
old rail fence. This line has been
occupied to for 35 years at least.

June 26. 1911

Same chainmen

- N 4 1/2 E with hedge.

12.34 5 line fence Big 4 Pt. of way

13.105 iron bolt with nut O. R. R.

at 12.34 set stone with X &
jcs brickbats

with Big 4 R.R.

N 85 E

15.99 Kiel mark on R.R. Ho.

16.08 Drive $\frac{1}{2}$ " iron bar in \odot tract.

- N 83/4 E

0.76 set stone with x on top & face
brickbat for seal \leftarrow Purkeypile
or N. rt. of way from

3.84 drive $\frac{1}{8}$ " var, \odot pike, NW \leftarrow
Purkeypile.

with \odot pike S 76 1/2 E

0.41 \odot stone and culver

0.64 J.M. Coste Ditch

9.67 Drive $\frac{7}{8}$ " var \odot pike at
 \leftarrow in pile, @ 50' at 'rt. L' from
 \odot Main track Big 4

See page 67 for notes
as to culvert.

- S 83/4 W

0.765 drive iron bar \odot track

170

- with a track N 85 E

5.14 Drive $\frac{3}{4}$ " bar in O track
at 0.76 of line #1

Notes for culvert at 0.41
line #1 page 65.

Cyrus Kirk's deed calls for "branch"
then due South to R.R. line.

J. H. Casorey stated they did not
John W. Coart know of any change
James Patton } of location the branches
for the past 30 or 35
years, but that the
present stone culvert is to the west of
their recollection, in the same location
as previous bulg.

J. W. Wilkinson at Miami Valley Bank
(Quincy) had memory this country
all his life. He stated that when
he was a boy he recalled seeing
some indication of a channel or
branch just west of the present location.

E. C. Purkaystille stated that some of
the older residents years ago referred
to a certain lagoon that was standing in
west bank of old creek. He also
stated that E. S. Boughman recognized
a point near a certain fence post
at R.R. fence as on the correct line.

Set stone at east side of this post.
a run N $3\frac{1}{2}$ E & 200 feet
of the west of O side culv. a post
about 1 mile east of old lagoon slough

170

E. P. Baughman Survey

Check records near etc.
 Judge 21-1951

Start line as set (p. 56) at SW L
 corner N 45°

19.60 stone NW corner

N 88 1/2° W

9.98 stone

Continuing west along Sec line

Set S. 85° Random

N 87° W

at 40.66 Curve 35' + 66' = 101'
 Southing = 66' = 1 chain

140.66 11.5000 | 0.242 = 1° 25'

8132

18680

16264

24944

N 87° W

1° 25'

Corrected Cse = ⁸⁵ ³⁵ N 85 1/2° W

Set W. 14° Random

S 5° ± W

12.57 O. pike

27.80 O Big 4 RR

37.78 Stone & Stephenson & Down
 Cre. 55° W

Additional Measurement along Big 4

Start iron bar O R.R. at extreme
 west line Baughman. Meas. E

7.34 iron bolt OK

22.99 [Sec. line, Sec 29 & 35
 = 27.80 near top of this page]

83.55 bolt NW L Wilkinson

69.27

89.62 bar SW L Parkersdale

59.65

69.27 bar

2.65

74.41 bar on E. line

178

Aug. 2 - 1911

E. S. Baughman

Division of Game

Start at stone, SW of Robinson

— (Random) on or near line
Int. Sec. 29 & 30

N 85 1/2 W

3.10 - stake, iron bar, w. line

of 13⁰ 40 a

NW 1/4 = 89° 32'

9.10 - stake & iron bar, w. line 2^d 40 a

(N. P. or S. O. needle = N 85 W)
(Cross game at Sta. 0.)

15.21 - stake, stake, w. line 3^d 40 a

23.73 - stake - w. line 60 a

29.36 - stake - w. line 40 a

E. S. Baughman
Chain carrier

Earl Newell

J. S. Knook

Wm. H. Bean

Elmer Douglas

W. side of East 40 a
start at 3.10 of line, page 70.

Random N 4 1/2 E
NWS with sec line = 87° 52'

9.41 Stake in random

17.00 " " "

26.00 " " "

36.00 " " "

44.00 stake = 3.19 - W. of E. side backbay

45.00 water edge Main River

Easting at 44.00 ch = 3.19 - 3.10 = .09 lks

(See 44.03 page 57)

Easting = 1 lks for each 5 chains.

Corrections:

9.41, sec east, 9.41 ÷ 5 =	2 links
17.00 " " 17.00 ÷ 5 =	3 1/2 lks
26.00 " " 26 ÷ 5 =	5 1/5 lks
36.00 " " 36 ÷ 5 =	7 1/5 lks
44.00 " " 44 ÷ 5 =	9 -

44.50 cut blue boulder with X on top, 3.10 ch. v.

of backbay

12" white Walnut N 60° W 13 lks
12" white Elm N 93° E 40 lks

Measure from stake at 36.00 opp page
4.32 ch. 36.00 - 4.32 = 31.68,

rail fence, set iron bar in correct line

Set iron bars & stakes on corrected
line at 31.68, 17.00, 9.50

Line #1 = South

Produced corrected line S 4 1/2 W
at 7.00 - iron bar

18.46 stake. Midge gravel in pits

18.75, stake 5.

18.60 set iron bar ^(@ pits) 1.36 ch. E. of

iron bar at NW of Pinkney pits

Line # 2
North

Start at 9.10 page 70

0.00 = Line p. 70.

9.41 iron pin in fence row
17.00 (near) iron bar in fence row, measuring
west 65° from 17 of line #1.

at 36.00 line #1, turned
L. 89° 32', near W. 65°

Set stake, this makes

36.00 of line 2

36.00 - 4.28 = 31.72 = stake in
fence line - iron bar + reduction

43.09 stake for Line, Set stone

14" Hackberry	S 57 W	17	1 RE
1" Pig Hickory	N 75 E	22	1 KS

44.36 (near) H₂O

Line # 2 South

This line is parallel to line
No 1, @ 65° west

7.00 - iron bar & stake

17.53 - stake (peg) N. side gravel at pile

17.70 (near) @ pile

17.69 iron bar in pile

23.04 set 5/8" bar, @ R, R, ~~4.75~~

ch. W. of iron bar, opp. SW ← ↑
Purkeypile

fence should be 4.75

178

Sta. 0 = 15.21 p. 70.
(see page 70)

Produced line N. from 35.00
line # 2. = 6.11 d. Call this

36.00 line # 3

26.00 (near) stake

31.75 (near) stake for iron bar
in fence line

17.00 (near) set pin in fence row, 6.11 W,
line # 3.

40.15 H₂O

59.81 - boulder with X

13" White Elm N41E, 16 lbs
10" Black Hick N50W, 6 "
Pig nut

9.40 (near) in fence row, near 6.11
from line # 2

0.16 iron bar in fence line

11.37

~~12.37~~ iron pin N. of hog pen

11.55

~~12.55~~ blue nail mark on N
end of beam 3' from NW ←

17.53 (located this point by turning
N 89° 32' from 17.53 line 2
distance 6.11

17.53	17.53
6.56	579
<u>2409</u>	2332

24.07 O Work

23.32 iron pin in N. 80' 4-way fence

(O Work, no pin comes in a tie)

17.03 iron pin O pipe

175

Line # 4 - IV

Aug. 4-1911

Start at 217 1/2 page 70.

9.36 stake in side steep hill at N. side
big ravine

14.00 cross deep ravine

15.50 stake about 2 rods SW of old road

27.63 stake

36.24 cross transect line S of
river, 181ks W. of Sta 25+26
of line page 58

37.16 S. line H20

36.47 big stake by stone pile

36.70 stake

36.70 is 20.82 from line #1, 36.27

33.00 stake

36.47 stone with X cut,
26" Sycamore N 2 1/2° E 84
17" White Elm N 22° W 68

2082

No 4 - South

0.36 iron bar S. of fence line

15.76 stake in shoulder - pike grade

15.57 " S " " "

15.42 (near) O pike

15.40 iron pin in pike

24.80 1/2 stake at N. line Rt. of way

25.08 is 3.60 lks. (1st 43) from
bill. O.R.P. at ~~PRK~~ Wilkinson

26.60 bill in S fence at of way

33.09 stake in fence line N. line Stephenson
emerge about 355 W. of stake at
Wilkinson line

Cloned into plant stone

178

Line # 5 N.
Tessell L. 87° 32' from 33.03
Line # 4.
Rune w. 5.93 at set stake,
calling it 33.5 line 5.

33.35 stone with X

33.35 + 5.74 = 34.09 ± = H=0

33.35 stone with X by telephone pole

With 18" Sugar - N 20° E 57
22" Oak. Walnut S 25 1/2° E 80

This stone is in river - transit line at
31.59

Set in line in driveway by 2d house
Line # 4. 2 meas. w. 5.93 set
w. pine & stake in line # 5

Meas. W. 5.93 from 27.63 of line 4.
Thence N.

27.63 + 5.87 = 28.50

Down in a stake at 28.50, S. of fence
0 + 00 = 29.36 p. 70'

Line # 5 - South 81

0.46 iron pin in fence row

14.432 stakes - N + S. side gravel
14.72)

14.58 iron bar @ pipe

36.49 iron bar @ R.R.

58.17 - stake in N. line Stephens.
Edward Brangham will set stone
at once

(5.42 h from line 4)

178

Delruk - Horseman Surv.

Oct 20 - 1911

Start from bar. @ road NW
Culberson 7a.

South with @ road

7.05 pc. flat iron, SE < Culberson

- West with S. line Culberson

10.05 iron bar, SW < Culberson

37.97 wire fence - road

40.54 @ anchor post. <

Van Horn, Geo Horn,

Start at 37.97 previous line

- North with E. line Horn

20.24 line Horn - Brennan - west

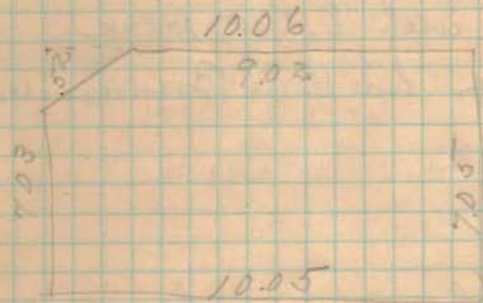
- E. along or near dividing
line

19.00 stake for disc

38.24 @ road

Stake at 38.5

38.5



Cse. Road, E. side N 5 E.

Meas. N. from Culberson NE \angle 12.65

= 19.70 from Culberson NE \angle .

Set up gas pipe in \odot road
= NE \angle Finnerman's track

Meas S. 54 \angle s (2024 - 54 = 19.70)

NW \angle = 19.70 from SW \angle

Cse. Boundary line = S 84 $\frac{1}{2}$ E

NW \angle Sec 8.

Sec 8 T 3 R 14
UNION TP.

Detrick

Brenner

54

pipe

38.24
584 $\frac{3}{4}$ E

Finnerman

68.00 a

N 4 $\frac{1}{4}$ E

19.70

54

54

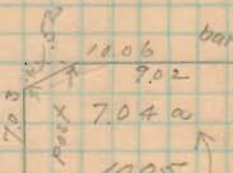
257

POST

27.97

37.97

bar



N 5 E

19.70

19.70

7.03

bar

bar

\odot Sec. 8.

S E \angle NW \angle

Mary E. Culberson

841

Heber McCracken
D.D. Williamson Lura
Dec. 19, 1911

Heber McCracken }
D.D. Williamson } ch. in
Samuel L. Spencott } at sta

Start stone in road at line
Williamson & Keenan just S. of
Doko Lake.

With Anchor Post in fence
line. West. In line with stone
44 1/2 lks.

Mean S. with O road

24.62 in line with wire fence
west & rail fence east.

D.D. Williamson (and Heber McCracken
with state that these fences have
been in present location for 30 or 40
yrs. & always recognized & accepted
as line.

24.62 set stone in O road being
8 1/2 S of Section

657

Set S. 4 feet
Westward along Sec. line
1993 - W. line D.D. W.
33.73 E. line of "Phonograph" Hoops
at this pt. new fence as built
by Roth is 22 lks S. of anchor
post. Only Heber McCracken (and
D.D. W. state that this anchor post
is in old fence line as stood for
30 or more years. New fence
built since 2 yrs ago in line given
by Frank Hoops.

38.50 O anchor post
38.52 O rail fence, south = NW ~~McCracken~~
38.58 telephone post
51.50 O Carlisle pits @ road west
Roth's fence. Heads toward O
of road. This road not straight

51.17 anchor post E side Carlisle
at L. Line follows a Roth

Set stakes for depth at 5, 10, 15, 20, 25,
30, 35 & 40 ch.

Random Set these stakes
in random, starting 4' S. at E end
N 84 3/4 W

at 33.73 Random cut 6 lks
N of anchor post.

Miss S, from stone at NW
 Ch. lot. for 7.03 anchor
 post = 32.73 previous page

Corrections.

Random line should run 4' S. of
 anchor post. 4' = 6 lks.

1. Random should run $6+6 = 12$ lks
 S. at 32.73

32.73 / 12, 000 (356 link per chain)
 10 119
 18810
 16865
 19450

356	x 5 = (correction for 5 ch)	1.780 lks
356	x 10 = 10 ch =	3.56
356	x 15	5.34
356	x 20	7.12
356	x 25	8.90
356	x 30	10.68
356	x 32.73 (chks lks.)	12.02 lks
356	x 38.50	13.71

at 3850 corrected line = 20' 8" N. of
 N. side anchor post at NW McConahan

Set south at each stake as per
 corrections on opposite page,
 this gave random, 4' south
 of true line.

Then set stakes 4' north of each
 point, = true line.

Samuel B. Lippincott

Real Estate
 Mason - Ohio

Admr - McCracken Estate

657

Thos. Weymouth Surv.
 Mch 21 - 1912

Found stone, N. line covering at SW
 corner of 4. meas. 5. set stake
 for dist at 12.00 dist. \odot road
 13 ch. stone. (Dead = 52.6 rods)

Found stone, cherry with in front
 of Frank Ross Res. Meas. 5
 Set stake for dist at 9.00
 gone to W & 9.02 (Dead = 35 rods \pm)
 (See p. 104)

Found Stone, @ Sil Lake Pike at
 Chain corner Stone = 12" below
 gravel. Set stake at stone.
 Temporary unit - Anchor post NE $38\frac{1}{2}$ lks
 Tel. pole EE $37\frac{1}{2}$
 Anchor post SW $38\frac{1}{2}$

Forked cedar NW $53\frac{1}{2}$
 This stone is near \odot gravel N & S, E & W
 Wire note in top boulder - NE 49 lks

Start at this stone & meas. W. with \odot
 Sil Lake Pike.
 at 16.44, wire gone S. = E line,
 gone. Long dug for stone in pike,
 did not find.
 (Dead = 65.8 rods)

(See top of page 102)

Apr. 5 - 1912

Found Stone, 88.6, 3.03 c. cut
 across on top. This stone is 5.06 lks
 S. of NE of tract.

Found iron pin 20" under gravel
 in road at NW \angle 3.03 c. to SW \angle
 gone. Placed large flat limestone
 on end, with X on top immediately
 over this pin. & set per brick bats

Found old fence posts on N. line of
 3.03 c. tract (dead! call for palmy
 fence. This fence line strikes pin
 in road at NW \angle 3.03 c.

Start at Stone as set in road at NW \angle
 3.03 c. $54\frac{1}{2}$ W. with road

at 5.61 set flat limestone on edge
 with X on top. (Note this line
 produced to 7.00 will be 4.38 from
 stone as found at SE \angle 3.03 c.)

Wire 12" low near NE \angle bridge
 $61\frac{3}{4}$ E, 133 lks.
 (planted per tile with stone)

line Weymouth - Jones

Commence 5.61 previous page

N 82 1/4 W

at 21.15 set stake temporary in road
in line previous fence, measurements
4.6 lbs west from large oak which
in fence line.

New with

14" High

S 52 E

61 lbs

20" Blk. Oak,

N 14 3/4 W

127 1/2 lbs

New stake is 2.77 from stone, N

side sil. Lake pike at < Cobb - Lippincott

3 nails Y in W floor

855

Commence again at stone, N. line Ewing
at SW & West 2 1/2 (See p 96.)
Meas. W

at 2.57 stone & Ewing (in measure)

(Set 10 N. at each of these stones & produced
line westward.)

Random (10' N) N 85 1/4 W

8.39 stake in Random

10.17

16.62 post claimed by Ch. Kayler as
his S. line. (dist = 62.60 rods)

13.62 stake in random (= 12' from fence line)

24.00 stake in random 20' S. of 1 1/2" random

29.54 O road - S. of Blue Oak

Random comes 40.5' S. of fence line E.
& rail fence W. between Dickson & Beck.
found no stone or corner of any kind

(See p 113.)

Start at about 28.54 & meas. N. along O road
at 37.7 blue keel marks in bridge floor
at 15.64 fence (= 19.36) stake also set
in road (p 98)

15.64 - 15.50 = 14 lbs long.

14 lbs = 1/10 - of 140. See p. 100

End line Weymouth & Nasher at 3.75
a blue mark in bridge floor 1/2 way between
lines 11.6' from S. end to W. floor (O)
32.3' from N. end of floor.

Start at Cherry tree

S 10 E

at 7.69 = fence row. fence = 2' to
far South (= 3 lbs)

7.69 - .03 = 7.66 to line Brannet.

7.66 - 7.60 = .06 surplus = (1% -)

(15.25 + 1% = 15.78) (See also p. 99.)

at 7.66 drove stake in Brannet line
for 8 E & Kayler & S W & Waymouth.

being 85 links E. of post (= 16.62 p. 99)
= 15.77 of line on p. 99.

Start again at Cherry Tree

(Needle var. 3°)

S 50 1/4 W.

at 4.60 Set stake in fence row
on S bank of J. Creek

In order to miss creek & keep away from back-
ing fence - set ins. S 28 1/4 E, 52 1/2 lbs

Fence runs roughly S 87 1/2 W

7.50 temporary stake

fence from this stake to 3 nails in bridge
floor (see both p. 98 & 99)

N 14 1/2 W. 105 lbs

Complete csa & dist. from 4.60 top of
this post to 3 nails in br. floor

(By plotting = N 89 W - 7.50)

855

Apr. 12 - 1912

Thos. Weymouth Surv. Continued

Set stake in Sil Lake Pits from
Cobb's wit. in Sil Lake side bank.This point is 2 lbs w. of wire fence
S. or $16.44 + 0.2 = 16.46$ from stone at
X road. Drive 10' bar 4' long

Set. W. 8'

- with Jones - Rooms line

S $3\frac{1}{2}$ W16.67 NE \angle Weymouth 303 a.Drive $\frac{1}{2}$ " galvanized gas pipe:

Wt = 8" dia in line w. 27 lbs

(See - N. line Weymouth 303a = N $82\frac{1}{2}$ W
42.4 1/2)23.73 stone S \angle Weymouth 303c

25.00 stake in B-J-Creek

Set stake for line, top N. bank

25.00 Drive $1\frac{1}{4}$ " bar, 4' long in CreekThence S 7 E (Random) with old
fence.

4.10 stone in Random

4.10 O road

15.83 - Ewing line, 14 lbs E of

stone at 1500' track 24

(Died = 64 rods.) Shortage = 17 lbs

or saw 4 lbs shortage in 440 ch. = 12 rods

Easting 14 lbs in 1583 ch. or 4 lbs in 4.86 ch

(Continued next page)

Set N. 4 lbs = \times corrected W. 4 lbs \therefore Dist; corner in Creek to \angle in line = 4.36 \rightarrow Set stone at 4.86 $\textcircled{10}$ 4 lbs W. of randomCorrected Cor = S $6\frac{1}{2}$ E \rightarrow Painted limestone & per cement tileThence from this stone as set to stone
in front of Frank Koons res. (p. 96)S $76\frac{1}{2}$ E, 15.48

See top of page 99

Produced this 10' offset line east.

at Co. Road - Came out 19' N. of
Ewing - Weymouth fence line, as built
in agreement by Ewing & Weymouth.13.11 Drive iron bolt, 90' from
stone at Frank Home

See p. 96.

Set over stone at Frank Koon, B.S.
on stone on oil boiler pile

8 4/4 - W

9.02. 2002. in belt.

855

Burkhardt School Lot

Mch 23, 1912

Found stone SW $\frac{1}{2}$ Lake Tp
and SW $\frac{1}{2}$ Harrison Tp. set by HC Moore.

Wit: - 86 $\frac{1}{2}$ Hills res N 9 W, 32 1/2
SW $\frac{1}{2}$ Ed Burkhardt res, 5 1/2 E
103 1/2 - 1/2

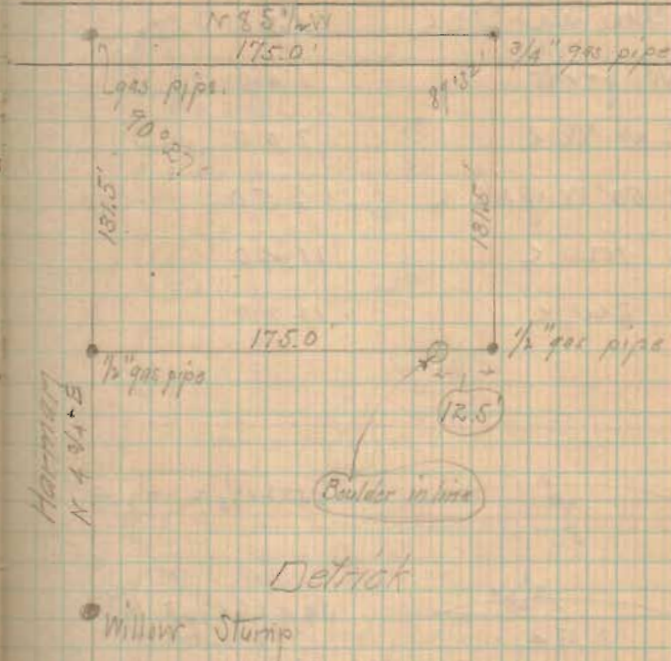
This stone is under the surface,
bleed, res., broken crack, and laid flat
blue limestone on top.

- with road N 85 1/2 W

at 13.29 = NW $\frac{1}{2}$ Penn D and NE $\frac{1}{2}$ Harrison

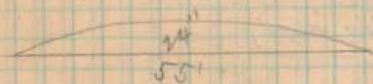
Found willow stump in line Herman
& Penn Detroit about 250' S. of road,
which was identified by Ed Burkhardt &
Sam Herman as in city fence row,
& accepted by Penn Detroit & Sam
Herman as line between them.

Set over this stump a produced
line N 4 3/4 E

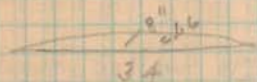


Bankhart School Levels

PM - down near SW \angle	1.81
Highest point	1.40
Ground at NE \angle	7.00
Ground 50' W of NE \angle	6.50
Ground NW \angle	11.40
Surf. SW \angle	12.20



$$55 \times 24 \div 2 = 780'$$



$$34 \times 9.66 \div 2 = 165'$$

$$780 + 165 =$$

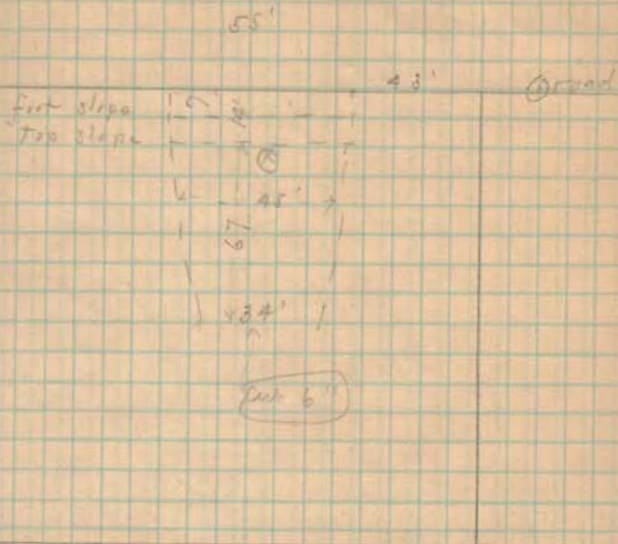
88 Sum areas

$$88 \div 2 =$$

44 Av. areas

$$44 \times 67 \div 27 = 109 \text{ cu yds.}$$

(on acct. let road cut, call this 100 yds)



⊙ = high point

Contour for road reading = 5.40
 (= 12.2' cut from high point)

776

W. E. R. Whitehead Sewer

Bellevue - 4-27-12

found stake N. line Colo - at
SE & Bigler Weymouth

Meas. S. 60' to S. line Colo -

line comes 24" S. of Cement Sidewalk

found old fence post, NW & N bearing
which per. Horn says was ~~in~~ in
old fence line.

Offset E. 20' on S. line Colo.

found stake at SW & Lawrence orchard &
in E. line of lot formerly C. A. Harrington

Meas. E

at 250.5 old fence post SE &

Lawrence.

Offset E. 20'

6507

Start meas on west line, commence
S. line Colo. at SE & Cassin -
Meas. S

170.0 - S. line Fearing (Jones)
220.0 - S. " Pls. A. Whitehead
232.5 - E. side anchor post, at north
line alley as occupier
350.0 - S. line alley
467.3 - old fence, near N. line drill
470.0 - N. line new cement sidewalk
524.8 - S. line " " "
527.5 - old fence line E.
681.0 - Wm fence W - near S. line lot #2401
720.0 - O. Porcupine run
968.0 - Wm fence N. line Wilson

Offset 20' E, 56' W

Set several narrow teeth in offset line

W. R. Whitehead 5-2-12
found bar @ Chullicotho @ Caroline.

Meas B 126 to E. line Lawrence
land This came about 9" W. of
line described on pp. 114 & 115.

Found iron bar @ Plum Valley
& Chullicotho

Meas. W.

242.66 pin for E. line Whitehead
 $242.66 + 124.85 = 367.51$

367.51 - pin for W. line of
tract shown on plat. Whitehead's title
comes about in line with old fence
to north, at E. boundary of Carson
land.

$367.51 + 110 = 477.51$

or
 $242.66 + 124.85 + 110 = 477.51$

- Dist called for in deed for W.
line Whitehead's.

or $242.66 + 234.90 = 477.56 =$
dist. @ Plum V. to E. line Lawrence
or $477.56 + 12.63 = 606.86 =$
dist. @ Plum V. to @ Carrolene.

6587

Check deeds etc. W. from @ Plum Valley

along N. line Chullicotho		along N. line Auburn	
1/2 Wid. Plum V. -	25	1/2 Wid. Plum V.	25
Fork Add	162	Fork Add	162
	187		187
E. line. Coleman from		alley	16
W. line Fork	56		203
	192.66		253
Coleman	50	Hannah Fry	50
			303
Check - E. line	242.66	Robinauge	50
Whitehead from			353
@ Plum			10
Whitehead	124.85	alley	313
	367.51	Whitehead	58
to E. line			371
Carson - N. of Club			110
to		Carson tract	110
Carson tract N.	113.35		481.00
	480.86		
to E. line			
Lawrence			

Meas. N. along N. Side Auburn
from O. Plumb Valley

485.0' E. line Lawrence

$485 - 481 = 4$ long.

304.25 stake, SW \angle Robinson

$304.25 - 303 = 1.25$ long.

$485.0 - 187 = 298$

$304.25 - 187 = 117.25$

Dividing up surplus makes this
stake with nail at SW \angle Robinson
about right. Note they started in
year 1899 from O. Auburn.

$187 + 184.8$ (Wilson deed to Turner

Deed Vol 84-501) = 371.8

$485.0 - 371.8 = 113.2 =$ Carson
= surplus of 3.2

$485 - 304.25 = 180.75$

= Dist SW \angle Robinson to Lawrence.

Deed = $110 + 59 + 10 = 179$.

surplus 2.75

Set alley stake W. of Robinson

at 314

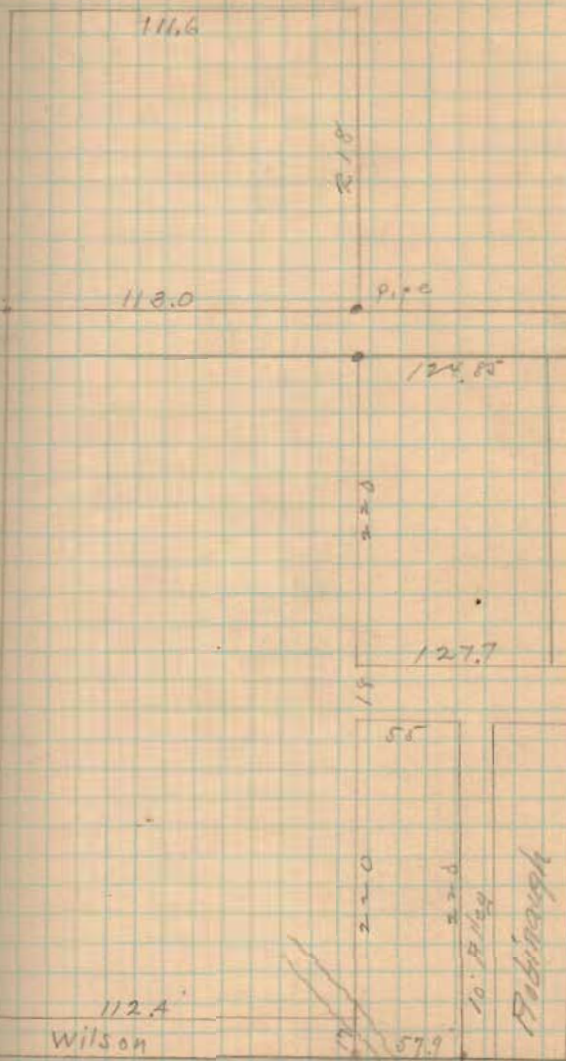
Set Wilson corner - N. Side Auburn

at 372.6

The E. line Carson was determined
by producing N. end of fence 5. &
(Came out at 372.6 of preceding page)

(5967)

6587



W. Auburn Ave

July 10 - 1912

Survey for Scott Stephenson
Northwood pike, 2 mi from Bellif-

Commence iron pin @ Northwood
pike at SE $\frac{1}{4}$ of lands of D M Stephenson
in Sec - 3347 Lake Tp, L. C. O.

- with S. line of said Stephenson,
S $75\frac{1}{2}$ W, 11.82 ch to iron bar
- N 15 E, $97\frac{1}{2}$ lks to iron bar
- parallel to 1st line - N $75\frac{1}{2}$ E 11.82
ch to iron bar. in @ said pike.
- with @ pike S 15 W - $97\frac{1}{2}$ lks to
begin = 1 acre

7368

Chas. Austine Sewer

Austine Mill & estate

Aug 1 - 1912

Cse O Huntsville pike N 8 - W
 Cse 39' line 5 8 1/2 W
 Austine pike 5 16 3/4 W



Commence stone in Huntsville pike at E. Tr Line (as designated by Henry Austine as having always been considered as corner). This stone is at west edge of gravel in pike in line with south ditch of road east, & in line with fence west.

— with Huntsville pike, N 8 - W

18.36 S end bridge floor over Charles

(Dist. clear bet. houses = 24 1/2 lks)

Sewer line = 6 2/3 lks E. of W. turn at S. end of bridge

18.33 line fence, E. supposed to be S. line old mill road.

19.30 1/2 N. end W. floor

20.21 O stone arch at rail road

24.54 (near) intersection O line Austine pike

25.93 set quarry stone with X on top a brick bats.

(Producing this line 17.43 further strikes iron bar on NW & orig Austine track)

This stone planted where iron bar is called for in deed, but could not be found. This stone O gravel & in line with Eusey's fence, west.

25.93 + 1.30 = 27.23 = NW & orig mill track

— N 8 1/2 E.

0.60 set quarry stone with X (and) brick bats at place where iron pipe was torn out by road grader in O Austine pike.

219

— N 16³/₄ E, with \odot Austine
pike.

at 18.95 stone in E wheel track
of pike at N. line Austine land
& NE \angle of tract \odot sold by Austine
to Fred Reer.

at 0.98 set stone - on line Mill tract.

North line

offset S. 10'

N 82¹/₂ - E

14.00 \odot Cherokee

24.60 Black Hawk at SE \angle Kern

15.62 W. fence RR H-of-way

— with W. line fence - O.E. H-of-way
S 23 E

0.12 cross branch

8.67 Mill race

16.23 \odot Fred Reer - intersects
Cherokee line west of fence

28.70 Spring branch

45.40 set stone in \odot road on
Lsr Tr line & in line with
W. fence line. Stone
with X. & per glass bottle

— with Treaty line & \odot road
S 83¹/₄ + W

35.99 Stone at Huntsville Pike

(219)

Mill Property - Anstine Surv.

See Deed - Vol 45 p 522
Aug 6 1867

Start. O Huntsville pike at 27.23
page 133.

S 7 6 + E

— 1.08 set long quarry stone
with X & brickbats in O Anstine
pike. at SE of Niss's tract.

5.50 (= 22 rods) stake

Set quarry stone with X & brick bats
Note - This stone is 98 lbs from stone
at 18.95 p. 134

5.50 - 1.08 = 4.42 net len. North line

— S 7 1/2 E

1.95 (7.80 rods) stake at N bank race

Set quarry stone with X & brickbats

— along N bank of race S 67 E
5.05 (= 20.70 rods) stake N side of race

Set flat quarry stone on edge -
X mark on top - brick bats

— S 16 1/2 W

5.70 (22.80 rods) stake at S edge of creek

Set stone & bricks

219

offset $6\frac{1}{2}$ E
~~5 1/2 E~~ - 1st chain

N 7 1/4 W N 75 3/4 W

at 7.70 drove iron bar
 at S. end end of Bridge at pile

Fixed SWC of Mill Property at
 S. end of bridge at pile.
 Drove 1st pile 16" long.
 offset S 6 1/2 W 1st ch

— West line with 0 pile
 N 8-W to begin.

Length west line:

27.23

18.36

8.87 chains

Allen Austine	Admr	2 da
Henry Austine	do	1 da
Lewis Kerr	ax	2 da
K. P. Leebert	do	2 da

\$150 per da. each

Allen Austine - P.O. Huntsville
 Tel
 Austine Bros - Huntsville

Make record of Survey
 Send Description with average as it is.

219

Jan 10 1913

Survey for Benthon Porron
1/2 mi W of Lutna

Start Stone S. line Sec, 2
m O. Sil. Lake pike.

Magn. W. N 85 W

17.42 found stone on edge
in first line,

43.28 Stone SW 2 Tully

At 17.35 Drive for iron bar
1" x 2" x 18" at SW 2 Porron
& SW 2 Tully

C. Ward
C. F. Sweden / checker

— N 4 1/4 E

at 92 links O. R. R.
~~N 69 1/2 E~~

With R. R. N 69 1/2 E (Dus @ tracks

at 22.00 Stake for ditch

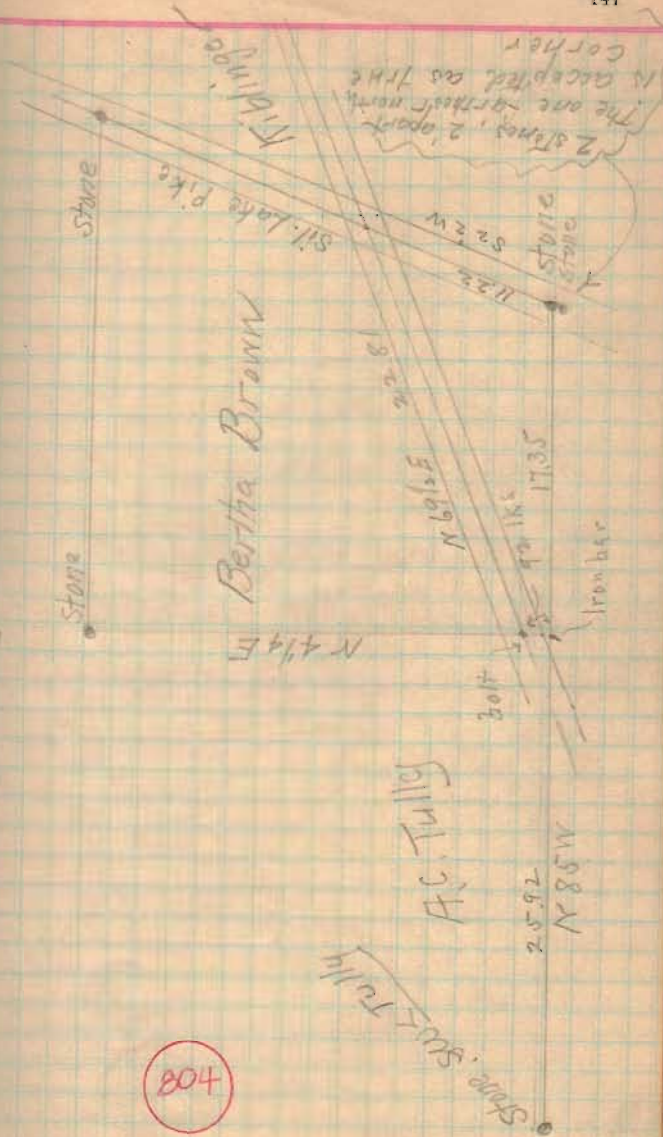
22.81 Volt - O R. R. & O Sil Lake Pike

SW 2 R. R. and Sil Lake pike -
47° 35'

804

- With O Sil. Lake Pike
S22 W

at 11.22. Stone, place of
beginning



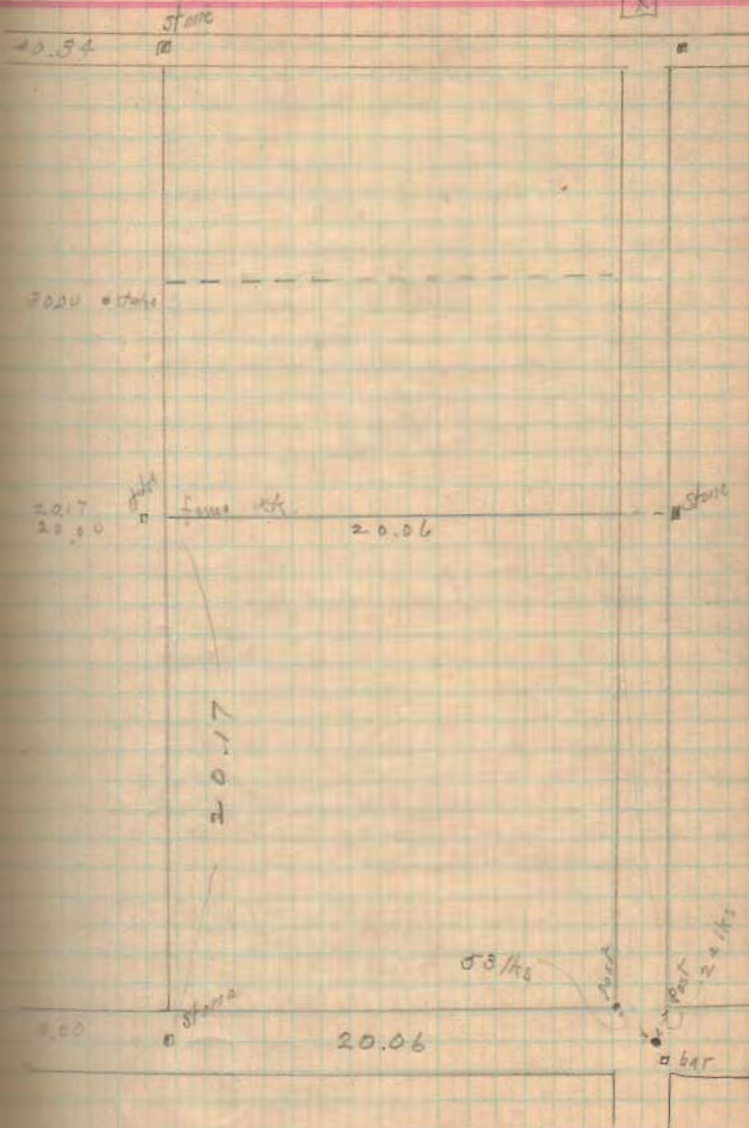
Survey Line between Theo
Oria & Frank Mader et al

Jan. 28 - 1913
John Pence / checker
W. H. Hurley

Copy - Confirmation Report of
Partition furnished by Frank Mader

The following described real estate
was decreed to Emma Mader -
20 acres off of the South side
of NE 1/4 of NW 1/4. Sec 16 -
T. 7. South Range 8 East"

7071



3-14-13

Sam'l Huber Surv.

Sec 5 26 T2 R 14 Washington Twp

Start stone in Sec Line NW 1/4 Huber
offset 8' north. Boreash - cant see.Meas E. 1991 near fence
line about Sec - Stake 12' S. of
anchor post. = SE 1/4 S.W. 1/4 Sec 6about Lee identifies this stake as set
by surveyor 14 yrs ago.

Offset S. 8.

Start at this stake & continue east.
calling this stake 0.0040.24
19.91
20.33

584 1/2 E

Set temporary stakes for dunn at 20.33

Set 1" galvanized, 99s pipe at correct &
28.04 stone not in line & not set by surveyor
marking SE 1/4 Lee31.64 rail fence S - (stone not found) E. line
Lee's 13 1/2' = Set stake in correct line

40.46 stone - SE 1/4 Sec 6 = NE 1/4 Sec 5

8027

Start at 99s pipe [20.33] offset W 1/4

[This pipe = 15' S. of old fence row]

S 5 W

12.96 = fence E. = S. line Lee's 13 1/2'

21.07 = fence W SE 1/4 Sam Huber

Set stake at 40.30 from SW 1/4 Huber
(See next page)[Note - if original meas. for East line
started at old fence row at Sec. line, this
would make Huber's dist about right]

21.07 + 15 ft = 21.22 [15 ft = 22 links]

12.96 set stake in fence line - 24' E
of offset lineAlso set stake for corner [SW 1/4
Lee's 13 1/2' = from old wild
crab witness. N 4 1/2' E - 14 1/2']The corner set from wild corner
in E & W fence row, but 9 1/2' E
of stake set from offset line.Stake as set = 14' E. of present
rail fence.

S. line Huber

Start Stone SW \leftarrow Huber

meas E.

40.30 stake for dist, SE \leftarrow Huber

this stake is $17\frac{1}{2}$ lks. E of
E. side anchor post

Albert F. Lee } Delgraff R.F.D.
Samuel Huber }

1208

Sec 6

Stake
Sec 6

Sec 5

Stake Sec 6
17.5

17.5 Stake SW \leftarrow Sec 6
Stake 1/2 E

Stake 1

21 foot