

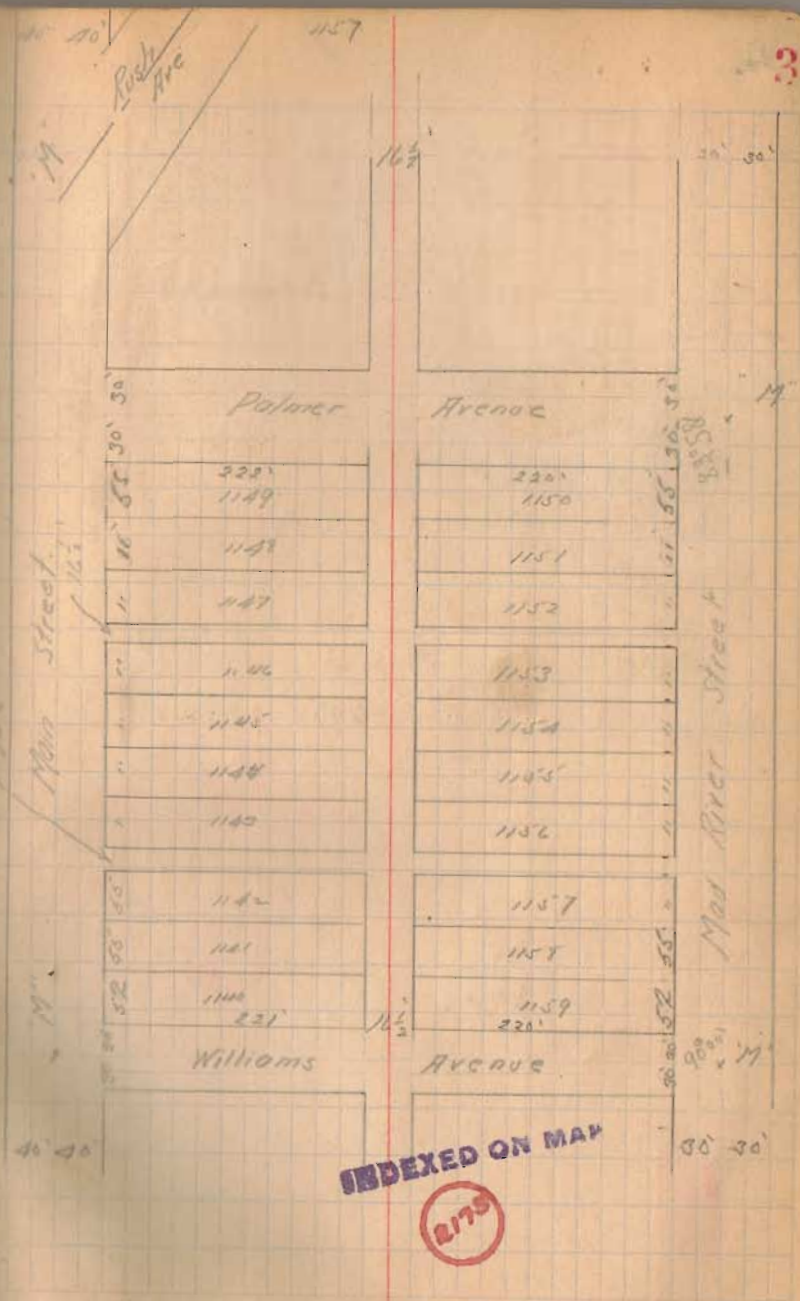
2.

Madison - Williams from Bar
 E 1/2 pole - N.W. - 26.95' - E 1/2
 pole - SE - 22.45' - 12" Elm
 SW - 20.9' Curb - East side - 15'

Madison and Palmer -
 Hyd - N.W. Tapscrew - 30'
 Sewer inlet - N.W. Bend - 29.52'
 S. lot NE - Bend 24.60'
 NW - brick frame house NE 53.67

Palmer and Main
 NW - school houses - lower corner
 area 79.23
 sugar tree 7" - N.W. - 57.09

Main and Williams "M"
 North inlet - west side - Main - SW - 28.95
 " " " " " SE - 29.30
 S " " " " " NE - 29.10
 " " " " " NW - 28.85
 Tapscrew Hyd - NE - 32.65



3

Main and Reed - 'N' -
 Elev. pole - E - 25.20'
 " SW - 27.55'
 Top screw height - NW - 66.00'

Main and Powell -
 Hyd - East - 27.75'
 3" pole SW - 38.20'
 Sugar - 3" - NW - 39.4'

On Main	Alt	Measured
Balmer to Williams	640.0	

On Mad River	Alt	Measured
Balmer to Wms	640.0	641.50 641.55

On Williams	Alt	Measured
Mad River to Main	527.5	

On Balmer	Alt	Measured
Main to Mad River	528.50	529.85

Interior angle at Balmer - Mad River
 89° 58'

Interior = at Wms - Mad River
 90° 00'

125
 120
 2
 3225

70

August 22 - 1910

Survey of lots 500 and 501 for
J. E. Armstrong

NE - Spring & Main - $89^{\circ}54'$

Mass. Patterson to Spring - 440.19

SE - Patterson & Main - $90^{\circ}06'$

NW - Spring & Madison - $89^{\circ}57'$

Measured Mad River to ~~of~~ Main
- Patterson 524.95

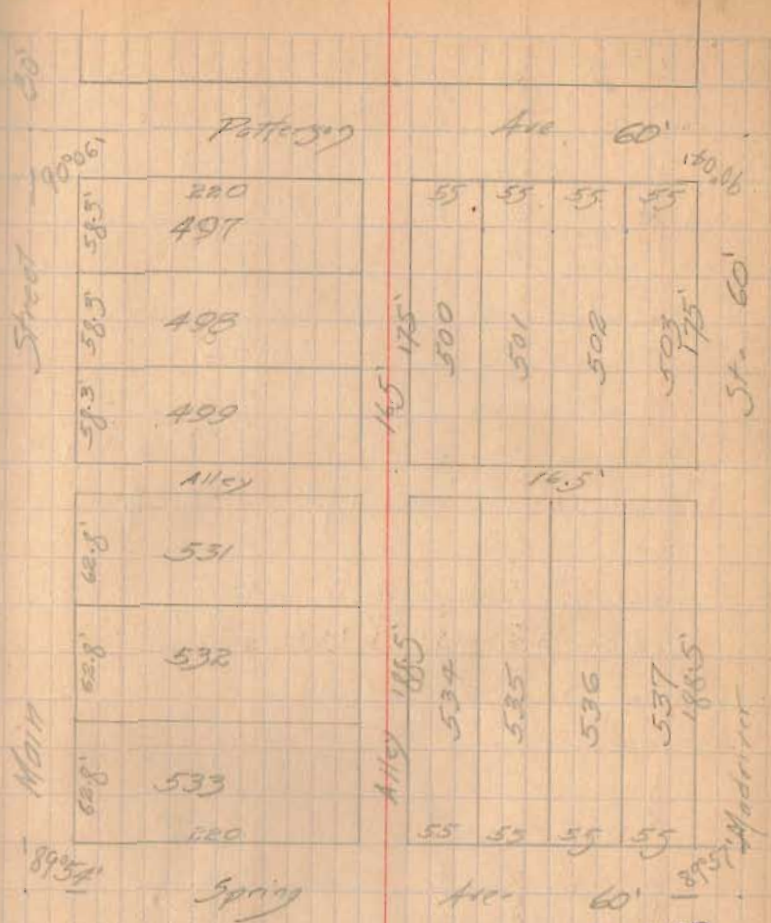
Measured Patterson to Spring on Main - 440.20
- Main to Mad River on
Spring - 526.20

Measured Mad Spring to Patterson on
Mad River - 440.13

On Patterson - plot along 526.50
mortgage - 1.55 or .19 to the 55' lot

Low of spikes on Patterson at the
following distances from X Patterson and
Mad River - 139.61 - 194.42 - 241.22

11



INDEXED ON MAP

2176

Patterson and Park -

Hyd - NE - 25.3' - Elec Light pole SE - 22.7

Mayer dead tree - 6' - SW - 26.8'

At X Patterson and Mad River dug
up stake with tack - Checked this
stake for line - line came .06 east
of old tack - and .07 north -

Measured SW - Patterson and
Mad River $90^{\circ}04'$

Plot distance - Spring to Pat. on Mad River 440.0
Excess - 0.13 - for 175' - 0.06

Plot distance on Main - Pat. to Spring 439.8
Excess: 40

Property on Main - 363.3 -
Excess for 175' = 0.19

Station # 501 - west side - 175.12'
502 - east side - 175.08'
502 west - 175.10'

Side - Hill Lot # 501 - $89^{\circ}58'$ -
" " 502 - $89^{\circ}59\frac{1}{2}'$ -
Side - Hill Lot 502 $90^{\circ}01'$

188.5
16.5

174.9
188.4
16.5
60
439.8

Measured - back end lot - 109.92'

14

October 11 - 1910

Survey for Jas. O. Nixon
 South part of lot #32
 see page 6 - this book

Iron pins set at SE and SW corners
 and ~~half~~ 110' west from
 SE c on south line -

Iron pins set at NE and NW corners
 and on south line - 75.36' - 93'
 - 170' from NE corner

At middle point south line - middle
 part of fence - 0.7' south line

lot up at SW c line - at SE c

15

ADW
 CEP
 DHB

30

165

195

change - 0.03

distance - 194.97' for south line

lot #32

+ 28

223.95'

NW c Auburn and Detroit 89° 50'

NW c Chillicothe " " 90° 00'

difference - 0 1/2' per lot

89° 54' NW c at SE c lot 32

89° 53' NW c " NE c

NE c lot 32

INDEXED ON MAP

9206

INDEXED ON MAP

October 13-1910

Torkey survey part of lots
133-134 & 135 in McCalloch's
Addition to Bellefontaine

Set spike w center spring in west
line of lot 133 produced

Bearing of Spring Ave - $N 86^{\circ} W$
Measured SW angle Ludlow - Spring - flag
Park and Colton - $109^{\circ} 40'$

Then on of Ludlow measured South
15.76 for north line of property
to be full - $SW 3.95$ chains

South property line Spring - $31.95'$ south
of Spring sp of Ludlow -
($30 \div \cos 19^{\circ} 40'$)

Deeds - Measured along fence east
side lot - in which Torkey house
along - 4.06 chains - flat along
 3.95

On west line Torkey - 3.99 m
fence

Spring and Ludlow - Iron Bar
Hyd. NW - $49.10'$ Ely - $6'$ - NE - $22.5'$
Gate post - SE - $45.15'$ Ely height
pole - SW - 25.30

Spring and Newell -

Spring and Park - Iron Bar
Ely. Light pole - NE - $27.4'$ - old
fence post - NE - $33.93'$ - Center of
piece of river - lower cement step -
(well) south - $31.15'$

Colton and Ludlow -

41571 poles

3.95 chains

$\frac{4}{1560}$

INDEXED ON MAP

2177

10/4/1910

Measured from Φ Spring to SW
Deeds 451 chains

Leaving - south line orchard S 84° E
- Suddow Street - N 15° W

On line orchard produced cuts
 Φ Suddow - 4.14 chains to S line
Spring

Turned a 69° 04' from set up in
Suddow line at Spring and
south line Orchard -
Measured on this line

West - 24' long set NE Φ Dairy
pole - Witnesses - Telephone
pole SE - 24.5 Stake - east
(across Suddow) - on line produced
60.57'

East side - Dairy pole - 4.23 chs
67% chains on south line Dairy
West line Dairy - 4.25 chs

$$\begin{array}{r} 20.50 \\ - 2.87 \\ \hline 17.63 \end{array}$$

30.50	1924
18.02	32.12
1984	28.45
1868	60.57
<hr/>	
1460	
924	
<hr/>	
1460	

$$\begin{array}{r} 3/88 \\ \hline 222 \\ \hline 52 \end{array}$$

with line Dairy -

SE - Deeds 2+62

SE - Newgane 3+50

SE - Turkey house lot - 4+91

West side Suddow - 5+70

Witnesses Colton - Suddow line
Electric light pole - NW - 33.10
3/8 double bracket - NW - 43.20
fence post SW Φ Suddow Colton - W - 29.0
Telephone pole SW - 54.45
Elec. light pole SE - 23.40
at the end

Survey of part of Military
Survey 3317 for John F. Dickinson

(Lake Top.)

$$\begin{array}{r} 13.41 \\ 13.78 \\ \hline 27.19 \\ 23.595 \end{array}$$

$$\begin{array}{r} 2206 \\ 73.60 \\ \hline 13236 \\ 6618 \\ 2206 \\ \hline 300016 \end{array}$$

2206

(2206)

$$\begin{array}{r} 1360 \\ 1360 \\ \hline 2720 \\ 2720 \\ \hline 5440 \\ 2720 \\ \hline 8160 \\ 2720 \\ \hline 10880 \\ 2720 \\ \hline 13600 \end{array}$$

Stone

N. 85 E
55.10 P.

90 1/2

Stone.

Record.
H. Tempo M^c Crocker
to
John F. Dickinson

Vol. 109

Page. 472-473

July 5, 1910

N. 54 W
171.40 P.

69.5 Ac.

S. 5 1/2 E
153.30 P.

Stone.

S. 86 W
40.10 P.

Stone

Stone.

S. 16 1/2 E
61 P.

INDEXED ON MAP

2170

N. 10 1/2 W
65.30 P.

Stone.

Road # 2

S. 85 W
40.20 P.

A

$$\begin{array}{r} 69 \text{ ch} \\ .57 \\ \hline 8 \end{array}$$

$$\begin{array}{r} 55.10 \\ 13.76 \\ \hline \end{array}$$

$$\begin{array}{r} .64 \\ .58 \\ \hline 512 \\ 320 \\ \hline 3712 \end{array} \quad \begin{array}{r} 114 \\ 41 \\ \hline \end{array}$$

$$\begin{array}{r} 3200 \\ 22260 \\ 19165 \\ \hline 311504 \\ 30664 \\ \hline \end{array} \quad \begin{array}{r} .56 \\ \hline \end{array}$$

$$\begin{array}{r} 38.33 \\ 21.77 \\ \hline 19165 \\ 26050 \\ \hline \end{array} \quad \begin{array}{r} .57 \\ \hline \end{array}$$

$$\begin{array}{r} 13.78 \\ 78 \\ \hline 13.60 \end{array}$$

$$\begin{array}{r} 153.30 \\ 38.33 \\ \hline 191.63 \end{array}$$

$$\begin{array}{r} 12 \\ 157 \\ \hline 84 \\ 60 \\ \hline 1684 \end{array}$$

$$\begin{array}{r} 13.78 \\ 187 \\ \hline 13.41 \end{array}$$

$$\begin{array}{r} 6.2 \\ .7 \\ \hline 5.5 \end{array}$$

$$\begin{array}{r} 2.06 \\ 2.77 \\ \hline .29 \end{array}$$

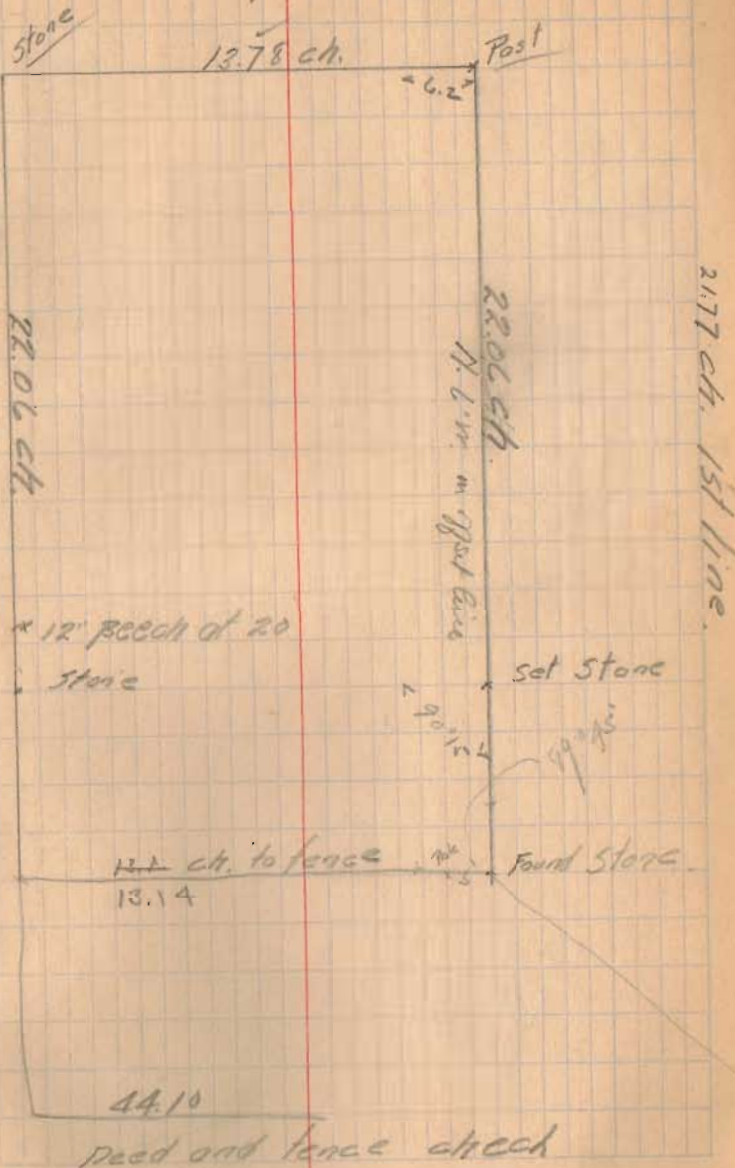
22.9 chains

$$\begin{array}{r} 13.14 \\ 13.78 \\ \hline 26.92 \\ 13.46 \\ \hline \end{array}$$

$$\begin{array}{r} 1180 \\ 10718 \\ \hline 112 \end{array}$$

$$\begin{array}{r} 13.46 \\ 30000 \\ 2692 \\ \hline 3060 \\ 292 \\ \hline 3550 \\ 2692 \\ \hline 1188 \end{array}$$

Survey



January 13-1911

Survey for Extension Bellefontaine Cemetery

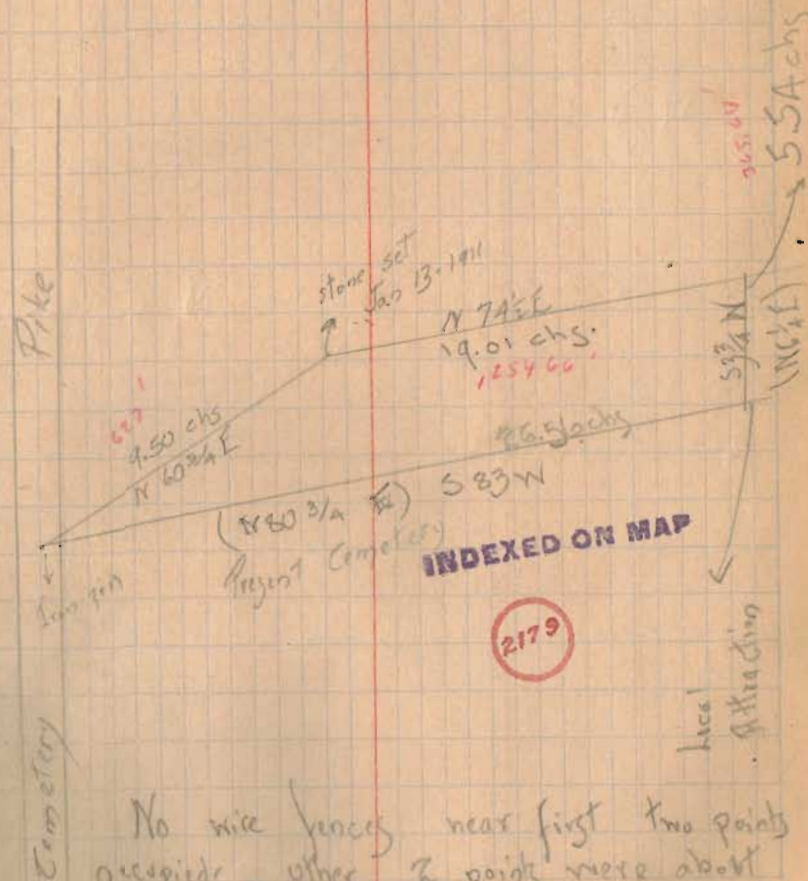
Started. SW \leftarrow Hubbard land - MMA Cemetery. iron bar (witnesses on page 31)

Bearing of Survey line south line
S 245 - N $80\frac{3}{4}$ E

The proposed extension to the cemetery consists in a 4-sided piece having for its South side the south line of Survey 5245 and the line present cemetery. Its east side the east line of Survey 5245 and its north and west lines by two lines intersecting near the south bank of Poplar Run - the westerly line making an angle of $20^{\circ}08'$ with N line present cemetery - and by N $60\frac{3}{4}$ E - Distance 9.50 chs. (stone set from this stone to 18" poplar N $17\frac{1}{2}$ W 24 links.

Back by S $60\frac{3}{4}$ W

Witnesses to iron Bar	SW \leftarrow Hubbard
SW \leftarrow East coping - arch	NE 16.1
SE \leftarrow Next "	W 14.9
NE \leftarrow " "	NW 24.1



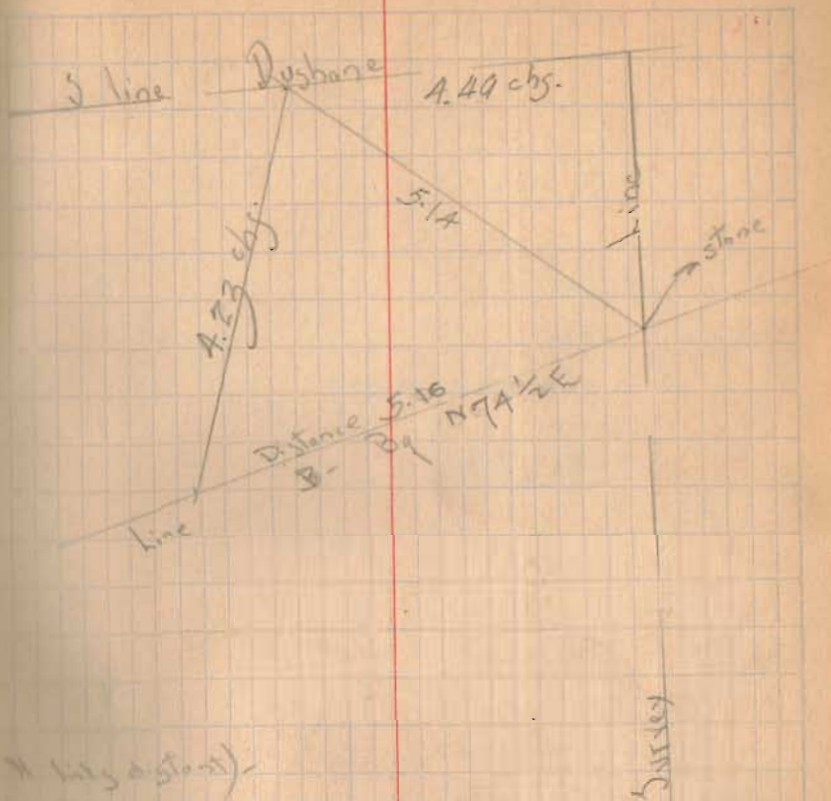
No wire fences near first two points occupied other 2 points were about 1' distant from wire fence with lot of metal near NE \leftarrow cemetery

Line B - Bearing $N74\frac{1}{2}^{\circ}E$
 Deflect from line A - left $13^{\circ}43'$
 Distance - 19.01 chains

Set stone at intersection of line B with
 Survey line - (East line 5245) - set
 stone on tin can - from this stone
 leaning white oak - NW is distant
 17 links
 Back Bearing Line B - $S74\frac{3}{4}^{\circ}W$
 Dist. 19.01 chs

Line C - Bearing - $S3^{\circ}4'N$ - Deflect from
 B - Right $108^{\circ}55'$
 Distance - 5.94 chs
 Back Bearing on C - $N6^{\circ}4'N$ (iron fence
 11 links distant)

Line D - Deflect from C - Right $76^{\circ}37'$
 Bearing $S83^{\circ}W$
 Distance 26.56 chs -
 This is N line of cemetery



By plates -	By mag br
$20^{\circ}08'$	20°
$166^{\circ}17'$	$166^{\circ}\frac{1}{4}$
$71^{\circ}05'$	$70^{\circ}\frac{3}{4}$
$103^{\circ}23'$	103°
$360^{\circ}55'$	<hr/>
	$360^{\circ}0$

July 7-1911

Survey of Curley - Lots -
Corner Plum Valley
and Chillicothe

Dug hole, south fence line -
Curley property - found
old stone - found
60.5' west of east fence

(2) About half^{way} between Columbus
and alley -

Between Curly 20.4
To east fence from east curb - 5.0
" west " " west " 4.9

(3) At north side of alley
Between curly 20.3
To house on east from east curb 5.4
" " " west " west " 3.0

DOW
HR-USA FTP

Measured on east side Plum
Valley from south fence line
of Curley property north -
North South line alley 216.5
North line alley by X-well 234
South line Columbus Street 466

INDEXED ON MAP

~~2180~~ 2180

(1) At Columbus
between curly 20.1
To east fence from east curb - 4.2
" west " " west " 4.2

(4) At south side of alley
between curly - 20.1
To east fence from east curb 6.6

at Chillicothe
Between curly 20.15
East curb to east fence 7.3

7/7/11

from fence east curb Plum Valley
to east line Cuskey
on alley 127.1

On east line Cuskey
from south fence line alley
to bank fence Chillicothe
ave. 27.5

On north line Chillicothe
measure from east fence Cuskey
to fence east curb Plum Valley
120.5

At east side Plum Valley
got ϕ Chillicothe between
curbs (29.95) (S walk)

from ϕ to N side N walk	27.4
" " " N fence	30.6
" " " S side S walk	27.9

Run preliminary ϕ of
Chillicothe from center between
curbs at Plum Valley to
X at Elm Street

At spike set on line ϕ
about 25' east of east line
Cuskey (N side S walk)

ϕ to N side N walk	27.75
" " N fence line	29.9
" " S side S walk	27.30

At spike set about East side
Electric Light plant

ϕ to N side N walk	29.2
" " S " S "	26.25

At spike set Powell St

ϕ to N side N walk	29.95
" " S " S "	26.8
" " S fence	29.75

7/7/11

Line \perp Blum Valley between
 only - just north of Chilliwhite
 line \perp Blum Valley between
 only, east of Columbus
 about 100' -

Line \perp produced to
 Chilliwhite is 4.56' east of
 X of Chilliwhite in Blum
 Valley

Line \perp produced to
 chalk is 8.75' west of
 east end Blum Valley
 Distance between only 25'

~~Line on spike set just
 east of Andy's east line
 (marked) only at Blum
 Valley
 but in gas here spike~~

~~This line produced west is 0.62'
 south of center of Blum Valley is
 Chilliwhite ~~produced~~ obtained by
 string line from across state~~

Line 125' east of east end at south
 line of Chilliwhite -
 line same distance over same
 chalk (this good for fences)

Line (east property line) line produced
 north is 10.2' east of east
 end Blum Valley at north line of
 north wall

Note - X of Blum Valley is Chilli-
 white comes in New York
 excavation and could not be
 located exactly - point used
 was obtained by using string

At Council St. N side N wall seems
 to line with N fence - west of
 light post

July 8-1911

Cadey Survey

Measured width Street lot
from fence ^{Columbus} Ave 55' which
is what deed calls for

Measured width McKinnon
lot from on fence Columbus
Ave. 67.2' - new runs
7.2'

found stone found at point
60' east of Cadey's SW -
measured east 60' and found
stone this is Chilliwater
Avenue

Measured west from stone
60' east of Cadey's SW -
60' - this point is 6.2'
east of east curb Plum Valley

Since McKinnon's fence width
is 67.2' and distance from
east curb to fence is 4.2'
a total of 66.4'

and Cadey's west lot is 60'
with distance to curb from SW -
6.2' - a total of 66.2'

Took $\frac{1}{2}$ of Plum Valley as
parallel to Cadey road set and
also parallel to east line
McKinnon and east line of
Cadey's west 60' lot -
and the east property line of
Plum Valley street is 6.2'
east of east curb -

Produced front line as obtained
from old survey west and
set stake 60' west of west stone
this stake SW - of property

July 15-1911

Survey of lot for Mrs. Foster

23 1/2' off south of 122' of north end
of lots 66 & 79

Record Book - Distance		
from Detroit to Maing on Chillicothe		
Record	527.77	} Total 527.88
Daily	528.00	
Inspect	527.95	

527.88	} For each lot excess 0.17
526.50	
Excess 1.38	

for E line lot 79 - mag 110.34

Inspect measured 7/14/09

On Detroit -	Coly to Chill -	527.54
		527.43
		527.48
Excess	0.98	for 220.49'

On Columbus
Detroit to Maing - 528.60 ✓On Maing
Maing to Chillicothe 527.25for 10' west of east line lot 79
measured east from east mag
line Detroit on Chillicothe 100.34for 10' west of east line lot 79
at alley - 100.43Excess at Columbus lot - 2.10
" per lot - 0.26

for 10' west - east line 2 nd lot - on	
Columbus	100.5
Chillicothe	100.34
	100.43

INDEXED ON MAP

2181

On Maing	excess	0.75
	per lot	0.09

On Detroit lot 220.49 deep
 " Main " 220.38 "

For 2nd lot east of Detroit - lot 220.46

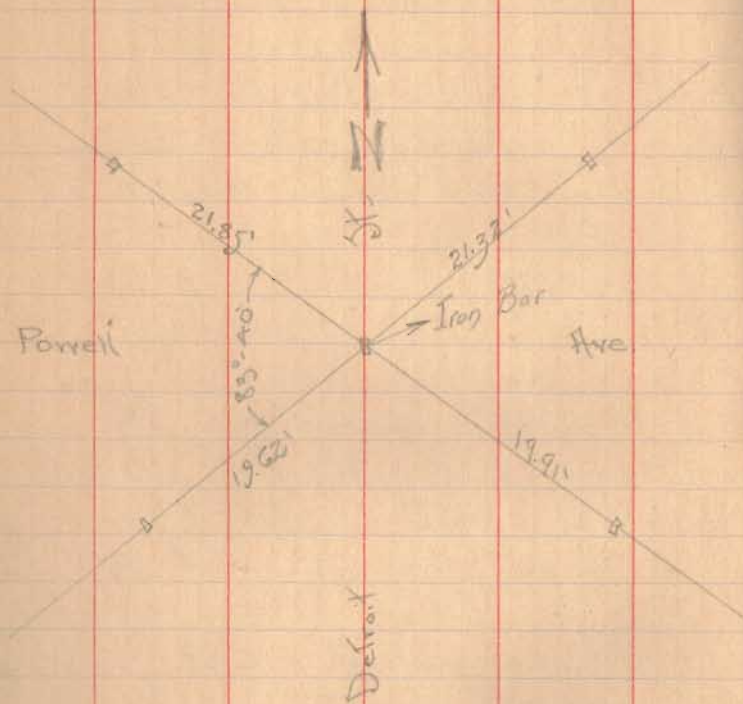
See on line 28' North of Detroit
 measure with former line - 100.46'
 for Adams' south line

for north line Adams 123.96'

On alley between Main to
 Detroit - lot 220.44'
 for north line Adams produced
 98.44 N - N prop line
 club -

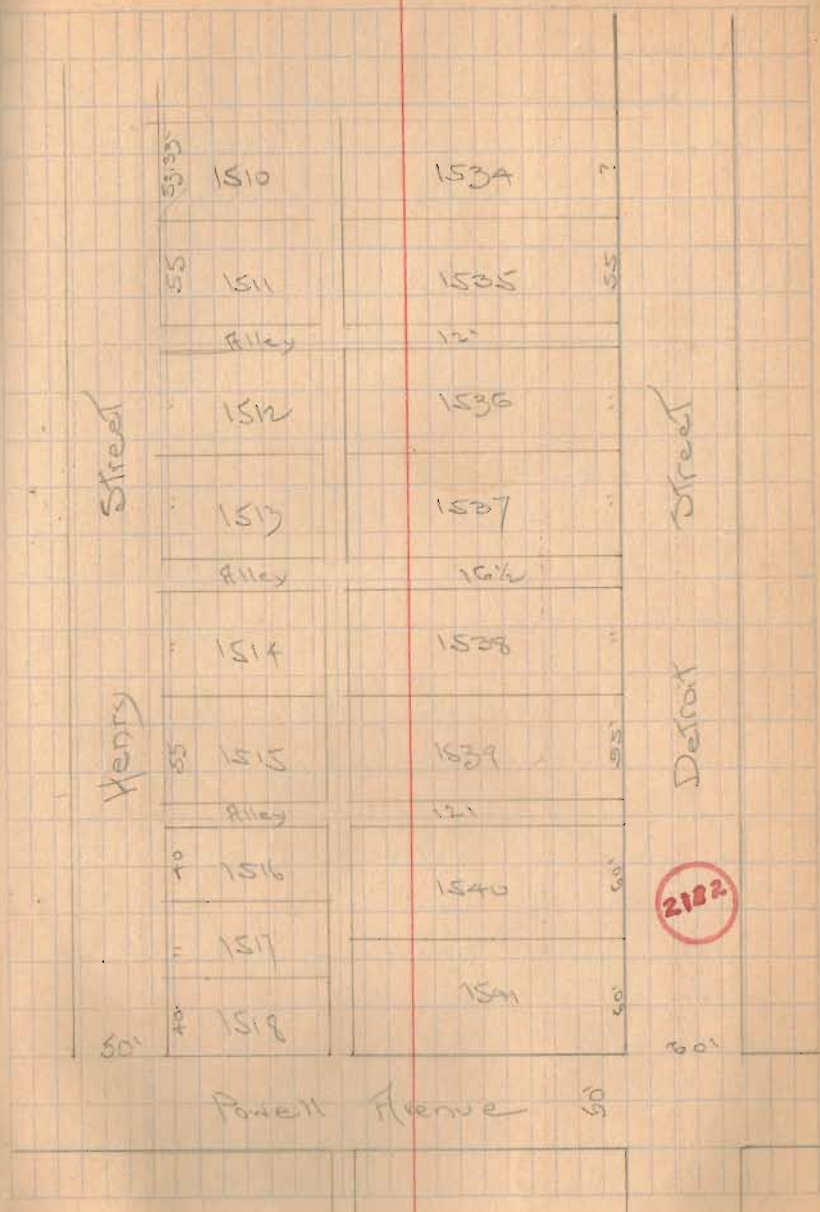
for N line Adams 121.94 N
 2
 123.94

July 17-1911
 Survey of lot for Indian Single
 North Detroit Street



Powell & Henry - EL stub - NE - 48.9
 EL pole - SE 35.3 Ash tree 200' 251'
 I.P. - NW - 196'

Henry - Powell's old - N line NW = house found
 SE = 35.05 Hyd SW 22.5
 NE = house found SW 39.20



Measure on Powell
Henry to Detroit
again

294.11'
294.09
Average 294.10'

Plot	A2	Plot	294
	65		
	12	Excess	0.10'
	55		
	294		

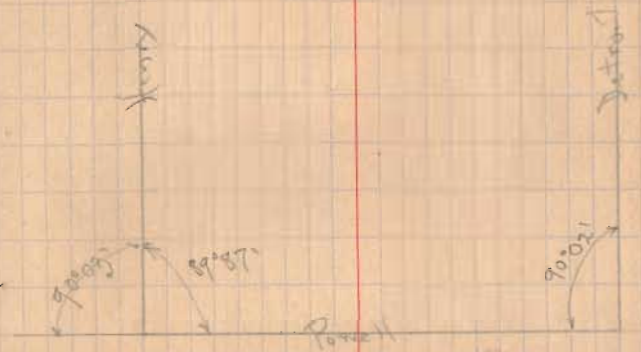
of Detroit - at ahead
obtained from survey

NW	<	Detroit	to	Powell	90° 02'
NE	<	Powell	to	Henry	89° 57'

Measured in alley west of Detroit
parallel to Detroit

120	380.5	for south line
12	lot 1535	
110	435.5	for north line
165	lot	
110	382.5	from north on wall
12	23	of Powell
380.5	437.5	

Turned SW angle at Straugh DE
corner - checked to measured
distance by alley - 89° 25'
made angle 89° 26'
at NE - SW - 89° 26'



shortage is lot length south line
lot 1535 = $382 \times .00029 = 0.11'$
shortage in lot length north line
lot 1535 = $435 \times .00029 = 0.13'$

Length	south line	lot 1535	141.89'
"	north	"	141.87'

In this survey by mistake I disregarded
excess of 0.10' on Powell which would make
length of lot - South 141.95' / states length
North 141.93' are in
length 0.06'

July 31 1911

Survey of lots 410 and 406

Measurements -

Everett Street - 1.3' below surface

Iron pin - 18.82' North - \perp Sandusky

Telegraph pole - N - 19.65' 25.5' on 8-27-10

Telephone pole - E - 16.04' 10' - on 8-27-10

Rail joint - N. rail main track - SE - 20.35'

SE corner shed - NW - 30.5'

Everett, E Columbus

Body of hydrant level of walk - SW - 25.54

NW - stone foundation SE - 59.58

SW - " " NE - 60.28

Lots street ends of stone circles - measure -

ment - 1" above paving

NE - 23.33 SE - 23.97

NW - 22.81 SW - 24.25

See Book 129
Page 69

INDEXED ON MAP

2105

Sandusky E West

Two iron Bars set at this intersecting
2' North and 2' South \perp Sandusky
by \perp West

North pin - 22.5' north center

of MHT cover

South pin - 19' south center cover

Garfield E West

Iron Bar

Top screw hydrant NE 27.6'

E light pole SE 31.0'

" " NW 37.2'

NE - porch SW 32.7'

Measured angle between Bay Ave
and West Street $59^{\circ}45'$ - true with
protractor - $32^{\circ}30' + 59^{\circ}45' = 32^{\circ}85'39''$ ~~30
25.917~~~~40830~~~~24556~~~~62740~~Difference in length
west and east sides lot

410 - 31'

 $31/55 = 0.56363$ true $0.56363 = 29.324'$

60° 30'

30

 $5 - 60^{\circ}36' =$

30

 $0.8712 = 34.44'$

Measured N₂ ← Sundry
 & West - 39°-19'

But point on $\frac{1}{2}$ of West
 on N line of lot 410 produced
 as held by Hamilton Perry

Plot along west side lot 410
 to measure 3265

~~+ 80~~

~~356.5~~

distance from $\frac{1}{2}$ Sundry to
 old NW ← lot 410

~~356.5 - 344.4 = 322.06 for
 present NW ← lot 410 on
 east line West~~

~~$20 \div \tan 60^{\circ} 36' =$~~

~~$\frac{20}{17747} = 11.27$~~

~~20
 17747
 22530
 17747
 47830~~

~~47830
 35494
 123360~~

522.06

11.07

333.33

For angle to turn at NW ← lot
 410 see page 116 this book
 N₂ ← 61°-09'

$20 \div \sin 61^{\circ} - 06' = .87546$

$30.0000 \times .87546$

262638×34.29

373620

350187

234360

175092

592680

226.5

30

356.5

34.29

322.23

11.04

$20 \div \tan 61^{\circ} - 06' = 1.8115$

333.27

20 \times 1.8115

18115

18850

18115

7350

11.04

From point $\frac{1}{2}$ of West and N line lot
 410 as shown by Hamilton
 see next page

measure DE on N line lot
produced - from ϕ West -
20 ÷ sin $61^{\circ}-06'$

$$= 0.87546$$

$$20 \quad \underbrace{0.87546}_{22.84'} \quad \checkmark$$

175092

249080

175092

739880

700368

39412

For NE lot,

$$75.0000 \quad \underbrace{0.87546}_{85.67} \quad \checkmark$$

706368

496320

437736

585900

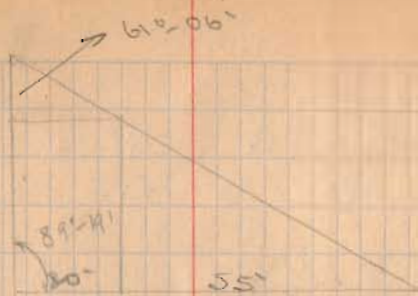
525276

60624

85.67

2284

62.83



$$\frac{20}{\sin 61^{\circ}-06'} = \frac{x}{\sin 89^{\circ}-11'}$$

$$20 \times \sin 89^{\circ}-11' = x \sin 61^{\circ}-06'$$

$$\sin 89^{\circ}-11' = .9999$$

$$\frac{20}{.9999} = 20.0020 - \text{close enough for } 20$$

.9999

75

49995

69993

749925

close enough for 75

On next line 410- to north
line from paper - 10.2

lot in up at NW - lot
 with line at stake. NW -
 means angle to SE ← stake
 $89^{\circ} - 19^{\circ}$ (check)

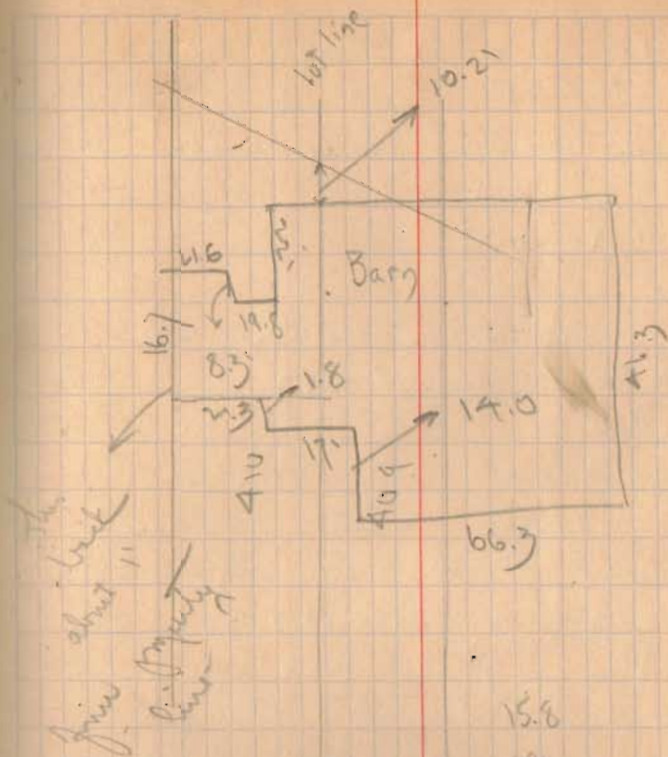
For east line of lot - turn NW
 stake on east line of lot
 lot 165' from SE ← $(190^{\circ} 41')$

has stake 39.5' south south
 side from garage

back side well 8.3 N of
 NW - stake

Well is roughly rectangular
 with west side parallel to street
 line and about 1' west of east
 property line

Well by 6.8 NES
 6.1 ESW



165	15.8
39.5	~
46.3	16.7
10.2	54.5
261.0	8.3
	46.2

Plot 295.5
 34.3
 261.2

Survey of lot 409

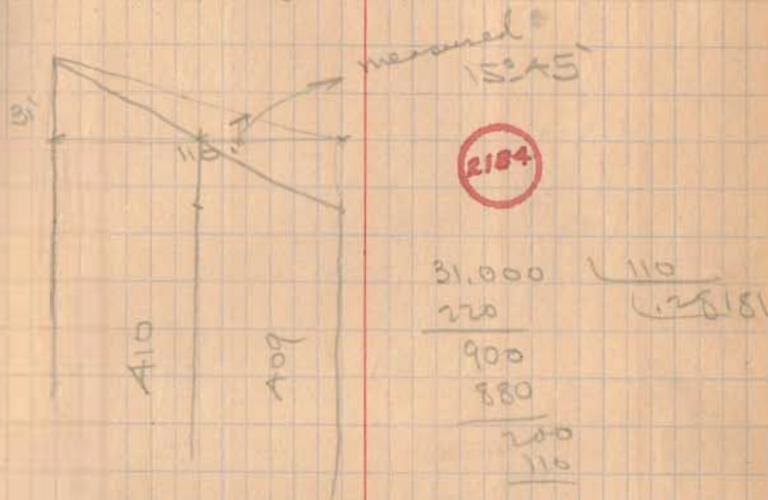
Measured east from stake set
at SE \leftarrow lot 410 - 55' for
NE \leftarrow lot 409

Then measured south 31'
from NW \leftarrow lot 410 on west
side lot - Put wig at this
point turn NE \leftarrow $69^{\circ} 19'$
checked angle and distance
55' for stake at NE \leftarrow lot
410 - measured east 55'
from NE \leftarrow lot 410 - set nail
at new this point turn
NE \leftarrow $69^{\circ} 19'$ and measure
south on this line 31' for
NE \leftarrow lot 409

NE \leftarrow lot 409 corner 18'
South of NE \leftarrow corner
NE \leftarrow lot 410 South of

corner
On E West St. 405' from N line
lot 410 produced to intersection
to corner

$15^{\circ} 45'$ Measured angle from
wig at point 55' east of NE \leftarrow lot
410 - line at NE \leftarrow lot 410
to NW \leftarrow lot 410



$\tan^{-1} 0.28181 = \text{calculated } 15^{\circ} 44 \frac{1}{2}'$

measured west side lot 410
= 229.1' roughly
measured east side lot 409 = 229.90'
roughly

49.50 from ϕ main track T&O C to
my spike on ϕ West measured at
angles to ϕ my
50' from NE \leftarrow to ϕ track

August 10, 1911

Survey of 15 Acres off
east side Kaylor farm
for mill factory

Witnesses in bar Lake & Corliss -
Tel pole SE - 26.35
30" maple NW - 40.6'

Measured from iron bar
Lake & Main - east to ~~section~~
line. 20 chs and 32.75 ft.
(not to section line to west line Kelly)

Witnesses to stone east line
Section ~~33~~ West line Kelly

Ball head in concrete fence
post - D.T. above ground S - 17.85
30" walnut NW 27.9
SW - shed NE 31.75'

INDEXED ON MAP

2185

Plot showing 1352.1' from ~~lake~~
Main to ~~section line~~ west line Kelly
was 1352.75
call this distance 1352.4'

or
$$\begin{array}{r} 1352.4 \\ \underline{130} \\ 320 \\ \underline{264} \\ 560 \\ \underline{518} \\ 320 \end{array}$$

Dove apple at 40 chs.
Witness Telephone pole S - 16.45
High tension pole NE 28.85
Lance post - NW - 30.50
(one guy cable)

Section line - Dec 33
measures from NW - T
NE - (77.12' chs)

Witnesses stone NW - Dec 33
~~one~~ apple tree SE - 35.00
High tension guy pole SW - 24.00
" " pole NW - 28.9

Measured on ϕ track
 Sankusky Disc ϕ \leftarrow
 North fence $\frac{1}{4}$ section line

at 17.44 ch ϕ Center pole
 20.15 " - line Kaylor
 ϕ Silver Lake
 40.42 South line pole
 40.99 North " "

at South line Kaylor
 fence - 33.65' west of track

Witnesses to spike - Kaylor NW \leftarrow

W side W end Sand Div E - 30.4
 N side Terrace pole - NW - 17.55
 Gate post SW - 22.50

August 11-1911

By Walter Scott's Survey of Center
 Land - Sand Bar distance 923'
 west of iron bar in Main 21

Spoke was set - 19.515 ch
 west of Main

923	166
66	13.99
263	
198	
650	
594	
560	

19.515

13.99

5.525

Beginning of section line S 85 $\frac{3}{4}$ E
 line between iron bar at Lake
 and Main and at NW \leftarrow Sec 33

Set spikes on line in road \leftarrow

Set spike on line 33' west of Sand
 Bar ϕ \leftarrow between rails
 Spike 2" below top of ground

Set line over by spike at
 Keylor's NE corner -
 turned angle of 90° from
 section line -
 and running south across
 Keylor's land - set over way
 2 chs
 by $R\ 5\ 4^\circ 10' W$

Gauge - standard - 4.708
 Yr - 2.35
 $33 - 2.35 = 30.65$

At SW cor. Keylor farm
 set stake on South line
 Keylor farm and 30.65
~~set~~ west of inside
 of west rail.

Distance	To fence	Fence to track	
2 chs.	6.4	6.4	29.7
4 "	12.8	7.4	29.85
6 "	20.5	6.7	29.7
8 "	28.2	7.7	29.85
10 "	36.0	7.8	30.3
12 "	43.2	7.2	30.75
14 "	51.2	8.0	30.65
16 "	(59.0)	9.6	30.6
18 "	66.7	5.9	30.65
20 "	74.7	7.0	30.7
At fence	72.2		30.65

Plus to fence	20.57 chs	Area
0 - 0.0 ft	- 0.0	.015 sq chs
2 - 0.95 ft	- 1.5	.028
4 - 0.80 ft	- 1.25	.028
6 - 0.95 "	- 1.5	.028
8 - 0.80 "	- 1.25	.018
10 - 0.35 "	- 0.5	.005
12 - 0.0 "	- 0.0	
		.120
0.12 sq chs		

100

Aug 30, 1911

Survey of lots 547-8-9-350

Chillicothe to Hayes -
Iron Ore

16' Survey SW - 27.1

18 light pole E of D. 46.6'

Top corner hydrant NW - 27.2

Columbus to Hayes "M"
6' west of Hayes

Chillicothe to Stanley

Hydrant NW - 30'

Corner house SW - 44'-5"

Measured - chill to Col -
in Stanley

523.43

Plot shows 516.50

Shortage 3.07'

 $230 + 30 = 260 - 1.57 = 258.43$

N line alley

3DW
FP
GHC Common

101

Measured Stanley to Hayes
on Chillicothe - 795.40'

14-50' lots -	700'	767
2 16 1/2 alleys	30	26.5
	20	793.5 - plot
	14	
	<u>767</u>	

Excess 1.90' - on Chillicothe

$$\frac{250}{705} \text{ of } 190 = \frac{5}{29}$$

$$\frac{10}{29} \text{ of } 190 = \frac{19 \cdot 129}{160}$$
for 1st alley west of Hayes
from Stanley - 522.50'

for 2nd alley - 255.35

Measured Col Stanley to Hayes

INDEXED ON MAP 789.40

2180

+ 6
795.40

INDEXED ON MAP

Hayes Col to Chill

Plot 526.50

Now 522.33

- Shortage - 4.17

Survey of Parts of lots

137-138

for Jos. Dietrich 3-11-12

Private Survey Notes - Book I Pages 1-5

X of Als and Main

N.E. B. Round head #12 brass screw 43.50 from cent.
 G. File mark face of iron inlet 40.20 " "

S.E. C. #12 brass screw 49.73 " "
 F. File mark face of inlet 39.70 " "

S.W. D. #12 brass screw 36.59 " "
 E + Water table Peoples Bank (not in)

N.W. A + cut in top stone water
 table S.E. on Wabam Bldg. 55.95

X Sandusky & Main.

X's on curb, whose intersection is
 the intersection of the E's.

INDEXED ON MAP

2107

CAL.
H.W.B.
DLB

Distance found to Cols	526.10
Plot.	526.50
Short.	1.40

Measured	2-22-09	526.05
"	6-9-08	526.05

Angle between E Main and Alley (SE)
 Book I Page 6-9-08 29° 52'

Measured 5.09 E Main 307.05
 for 41.25 S. of N.W. cor lot 137.

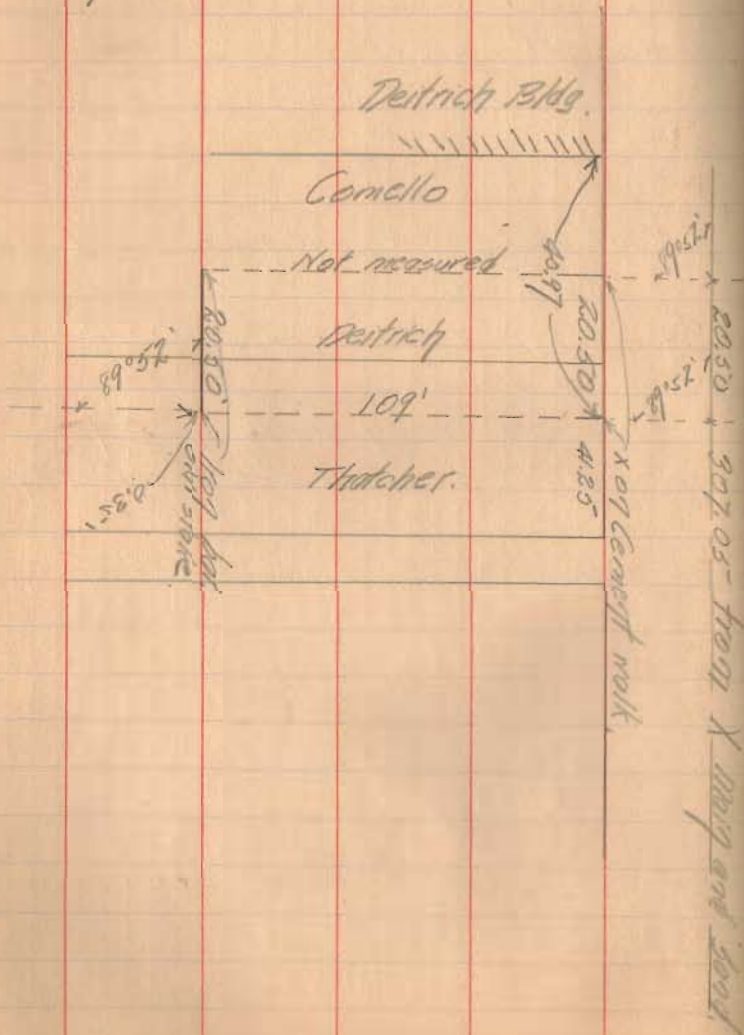
Measured 5 20.50' more for S
 line of Dietrich.

Round SE angle 29° 52' and measurement
 east 40' and 100' for N.W. and N.E.
 on Dietrich.

Same for SW and S.E. corners.

220
 220
 165
 41.25
 307.75
 70
 307.05

Plot of Deitrich Survey 05
 Surveyed Mch. 11, 1912.



Survey of lot 612 for
Paul Richter 3-11-12

X High and Detroit
stage on top of ground.

X Elm and High "M"

X Elm and Williams "M"

X Detroit and Williams.

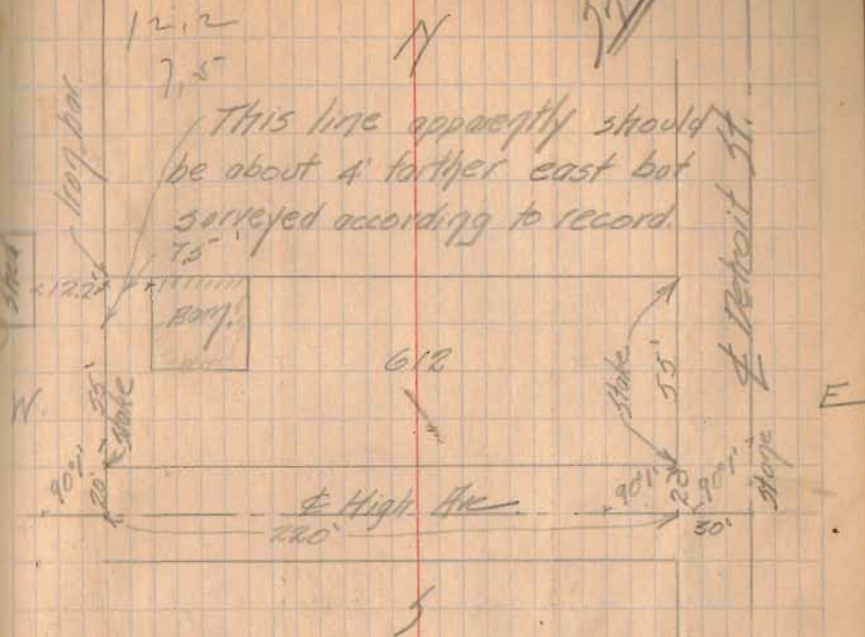
Lead points are set in the circular
curb at each corner of the intersection
and 14' from the center line.

Lot 612 is $55' \times 220'$

N.W. angle High and Detroit
 $90^\circ 1'$

Distance center of High Av.
to N face of S. curb of lot
along top of Detroit 240.55

Width between faces June 16³⁰



As surveyed for Paul Richter
March 11, 1912.

See City Survey (890) 4-19-52
City Book 274 Page 32

INDEXED ON MAP

2180