



Survey for Steve Zook  
A Part of Lots 1249-1250

July 12-34

4  
Main

Marle 30'

Main

Detroit 60'

Carter 50'

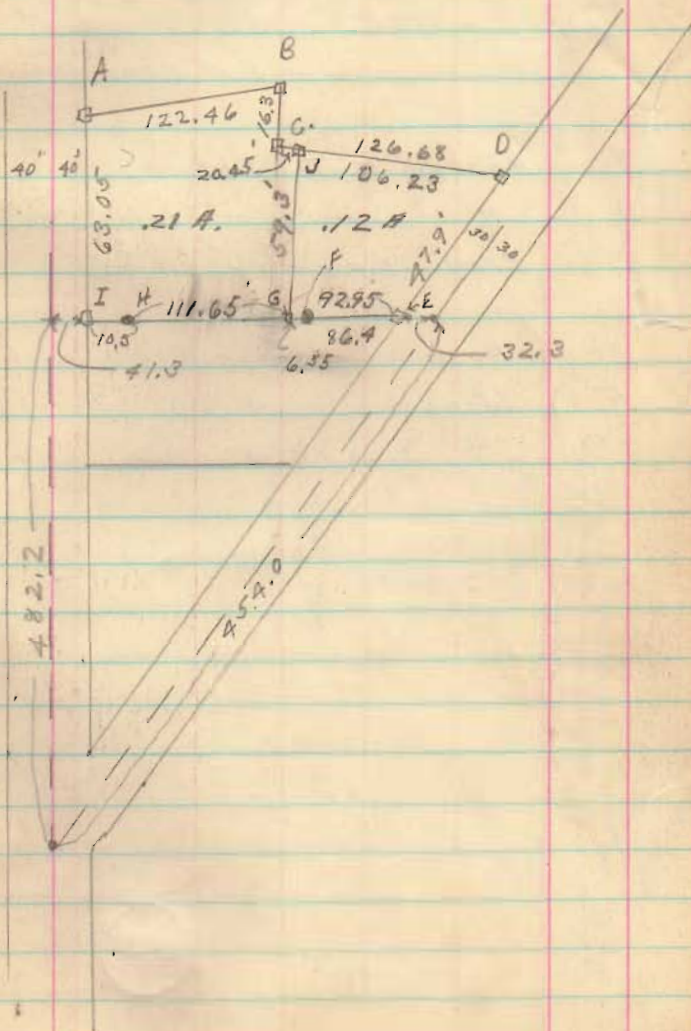
Main



8930

|    |        |        |    |    |
|----|--------|--------|----|----|
| 55 | 47 1/2 | 47 1/2 | 55 | 55 |
| 55 |        | 1250   |    | 55 |
| 55 |        | 1249   |    | 55 |
| 55 |        | 1248   |    | 55 |
| 55 |        | 1247   |    | 55 |
| 55 |        | 1246   |    | 55 |
|    |        | 205    |    |    |

| # | Stake | found |
|---|-------|-------|
| C | "     | "     |
| D | "     | "     |
| E | "     | "     |
| F | Iron  | "     |
| H | "     | "     |
| I | stake | "     |
| B | "     | set   |
| G | "     | set   |
| J | "     | "     |



1608

cold - very windy

Survey for Cummins  
Sec 17 T6 R. 8 Stokes Twp.  
Jan. 1 - 1935 J.S. Crane  
D.W. Dennis

- A Harrow Teeth set
- D " " "
- B Iron Pipe "
- C " Bar "
- E Post found
- F Stone "
- G " "

5193

