

Emerys Surr.

20 poles to an out

Emerys Surr

A = 26 S & L James Emery find old stone put in by one

Start 10 links N of stone James Emery & Leo Kikew ch. on chan dry creek at 4 poles N 87 3/4 W

Stake in line at 48 poles = a w 8 8 1/2

" " " " 80 " " 8 00 "

" " " " 99 " - c set south 7 1/2 x

Set off "on point" at 108 poles = S set south 6.6 links

at 136 poles set more N 3 links = 13 after set stake

Find stone at end of fence running south being true as contained by old witnesses.

Strike south of stone 9 links, departure 4 links

with dist from a to stone = N 87 1/4 W 8-1-40

= 163.60 = Ok N 87 1/2 true case

Departure 4 links too much south

Emerys Surr.

Line B - c S W L Emery

Start West (N 87 3/4 W) 28 links from stone N 2 E

Stake in line at 40 reset east

" " " " 80 " " 28 links

Chan cr at 96.8 poles

Stake in line at 120 " " 28 links

" " " " 160 poles

cut of Milldy B. pole at 160.25 poles

Creek at 260 poles

Strike 27 1/2 links west of stone in old fences supposed to stone true

Dist from c to h = 16 out 2 pins + 16 links = 324.64 poles

Set at g thus take line from a to i - N 87 1/2 W then across 28 links S 87 1/2 E from above stake in line at 160 poles then N 2 E 7 links.

True course line B = N 2 E and dist 8-0-7 = 160.28 poles = c to g.

Wit g = N. O. 16' N 57 1/2 E 94 links

160.35 = O K



#  
90
$$\begin{array}{r} 2.25 \\ 163.60 \\ \hline 165.85 \end{array}$$

$$\frac{85}{11} = 3$$

$$\frac{163.60}{60}$$

## Emerys Surv.

line C = to = OK Dec 12 at stone  
 take course from l to a = S 2 1/4 W  
 N 8 7/8 W course OK from l to k  
 Dist l to stone at k = 8-2-24 = 164.96  
 Stone at k = OK < East + West but perhaps  
 1/2 rod too much N

line D = a; true course a to k = N 8 7/8 W  
 Dist = 8-2-5 = 164.30 poles to stake in  
 cut of pipe true < at g  
 cut creek at 89 poles  
 set 2 stakes N 22 + S 29 W 25 ft from cut  
 164.2 = OK

71

## Emerys Surv.

line E a = S 2 1/4 W = OK across course  
 cut of RR at 5-3-45 = 107.80  
 Dist a to B = 8-0-4 = 160.16  
 cross cut of RR at 1/4 links south of south  
 side with guard  
 160.1 = OK

164.20

$$\frac{163.60}{60}$$

30







## Marmouss Surv.

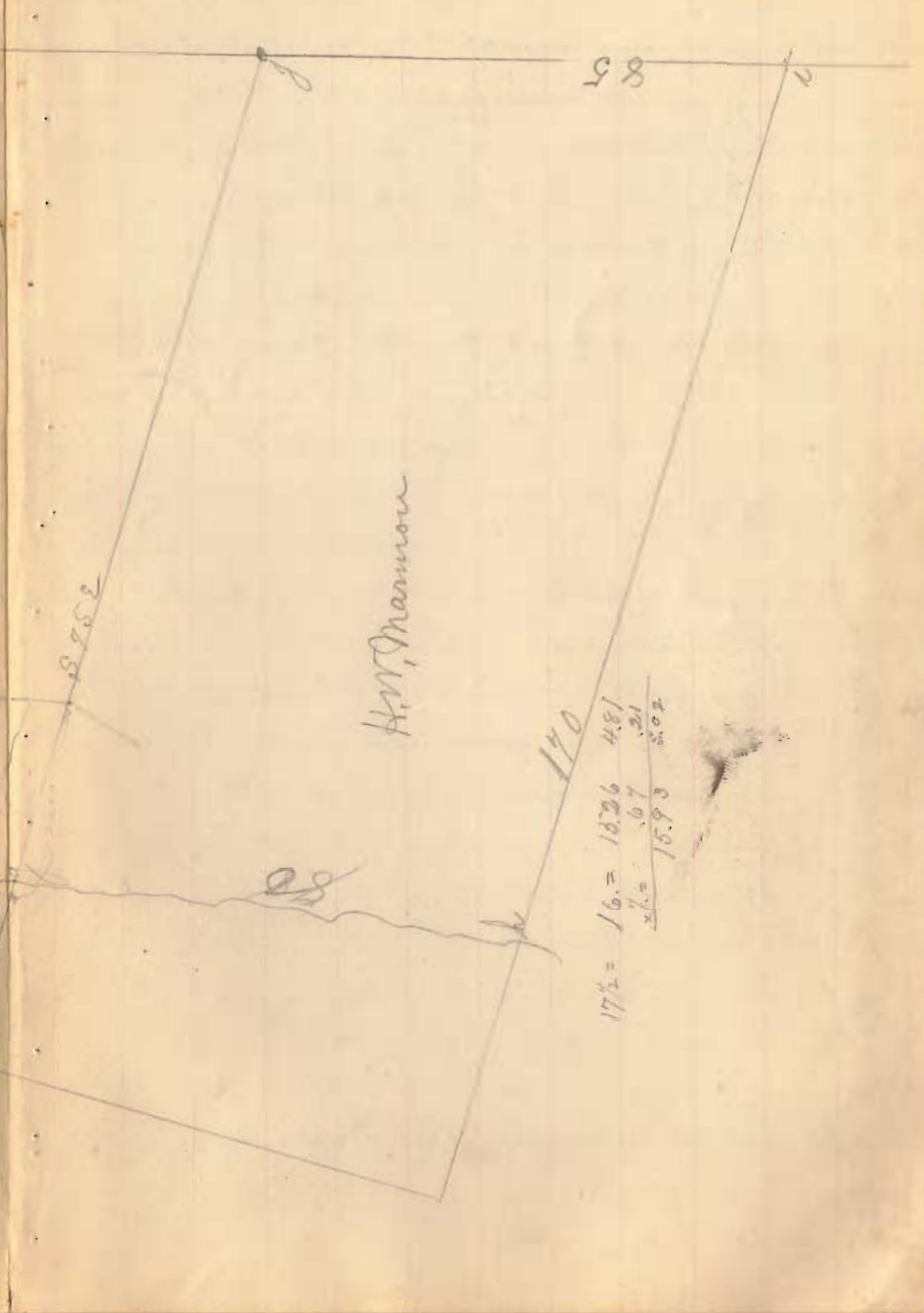
Surv for Marmouss & Vanhyning  
 S. P. Strong } ch or  
 Charles E. Scott }  
 Mortimer Vanhyning } mks  
 J. E. Marmouss }

Line a. Start  $S 88^{\circ} W$  50 lks from stone  
 at a  $S 2^{\circ} W$  80 poles = 4-0-0  
 set  $S 88^{\circ} E$  50 links to  $\leftarrow$  in fence row.  
 True line a =  $S 2^{\circ} W$  80 poles  
 a' =  $S 2^{\circ} W$  81

Line B = a Start  $S 17^{\circ} W$  21 links from stone  
 $S 73^{\circ} \frac{1}{2} W$   
 Stake in line at 80 poles  
 at 132 poles set south 16 links  
 set stake at 8-4-0 = 168 poles  
 at 168 poles go  $S 16^{\circ} \frac{1}{2} E$  32 links to  $\leftarrow$  stake  
 Variation too much south 5 lks = 20 poles  
 Meas from above stake  $S 73^{\circ} \frac{1}{2} E$  14 links = 56 poles  
 True line B =  $S 73^{\circ} \frac{1}{2} W$  167.44 poles to true  $\leftarrow$   
 Pit  $\leftarrow$  B = Red Elm 16"  $S 52^{\circ} \frac{1}{2} E$  18  $\frac{1}{2}$  links  
 " " also Pigeon Oak 20"  $S 13^{\circ} E$  56 lks  
 True B =  $S 73^{\circ} \frac{1}{2} W$  167.4 poles

287394

28173



170  
 17 1/2 = 16. = 18.26 4.81  
 x 1/2 = .07 .21  
 18.93 5.02



Dr Watsons Surrey Aug 5<sup>th</sup> 1892

Start at cent W.L. & Bell Pike. Take course of S line of alley fence = N 86 1/2 W line strikes 3' south of N fence bridge meets fence.

Start 33' = 50 links S of N E < met lot. Then on N 86 3/4 W. Strike west rail of RR at 3-1-11 = 62.44 poles. Strike fence on west side of old West property 3-4-29 = 69.16 poles. Strike Dr RR to Cranston at 4-8-25 = 94 poles. Strike west line Bissell lot at 5-5-2 = 110.8.

At N line Bissell set N 48 feet. At 309<sup>2</sup> poles strike 33' north of Oak & tree. Measure from Oak & tree east 6-4-31 = 129.24

Line B. start at N W < Cranston, then 50 links on thence S 37 W. set stake in line at 40 poles. Strike N line Cranston 10a at 2-8-32 = 57.28. Strike 16 links east of E W in Bissell lot. run E. = S 37 1/4 W

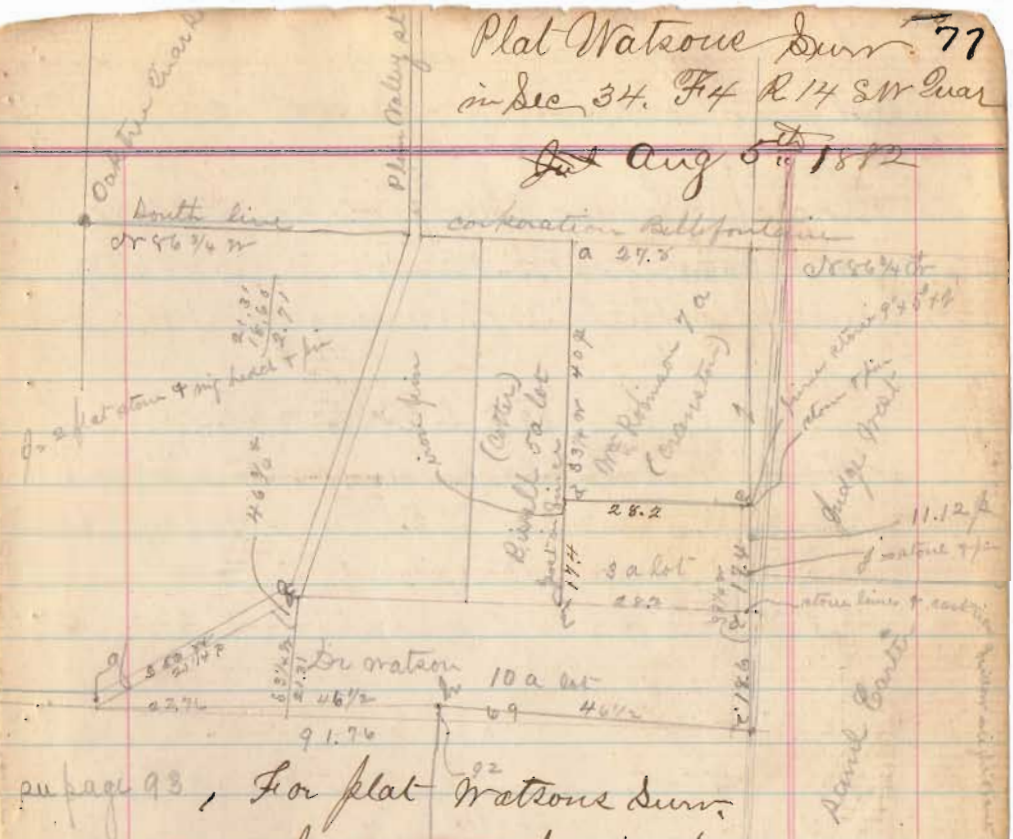
Line C. start at N W < Cranston, thence N 83 3/4 W 252 poles to stake N E < to 3 a lot

Line D. start at N E < Watsons 3a, thence S 37 1/2 W 11.12 poles to Cranston, and 17.40 poles N. E < 3 a in north line Watsons 10a.

27/00  
15%  
69/24  
27/24  
37/00  
15%

Plat Watsons Durr 77 in Dec 34. F4 R14 SW Quar

Set Aug 5<sup>th</sup> 1892



see page 93, For plat Watsons Durr see page 94, this book

Line E. start at South E < Watsons 3a, thence S 87 E 39 links = 156 poles to center of C S & C R R = Dr E < Watsons 10a. Strike S W < 3 a at 1-4-45 = 29.80

at < 3 a set South 10 links. Line F. start at cent R R or E < 10a thence N 87 W, strike S W < 3 a at 1-4-45 = 29.80 poles. Strike W W < 10 a Watsons at 3-5-14 = 70.56

Line G. start at N W < to 10a, S 50 W at 12.72 poles set N 87 W 3.20 poles, set S 87 E 3.20 poles strike N W to Watsons 10a at 21.25 poles. < on Br at 4' east of west side + 5' from South Watsons and cont on page 93



# Judge Lawrence Surr of

Course of new fence from SE  $\angle$  <sup>clearing</sup> = N 9 3/4 W = OK  
 approx cor of fence on south side clearing = S 5 7 1/2 W  
 Course of north line of clearing = S 8 1 1/2 W

Line a start SE  $\angle$  clearing  
 N 9 3/4 W with fence on west side of  
 new pipe 6-5-25 pks = 131 poles  
 out fence = S 8 1 1/2 W 37 links

B = NE  $\angle$  clearing start 3' 6" south of  
 S 8 1 1/2 W = dist 56.2 poles  
 2-8-5 = 56.20 poles to NW  $\angle$  of 50 ans  
 marks meet ridge Bush 14' at 12' Start 50 ans  
 from NW  $\angle$  50 ans run S 8 1 1/2 W 16 poles to  $\angle$  of  
 land as run off =  $\angle$  d

C = S as above

S 9 1/2 W

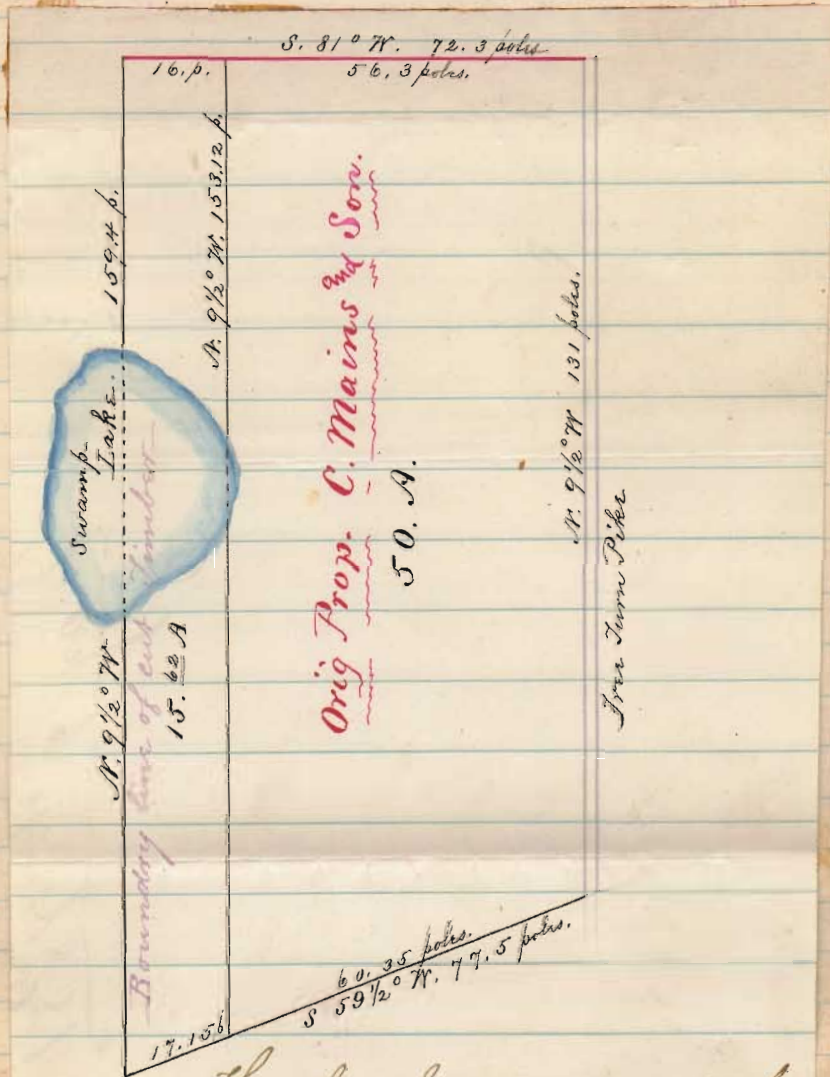
7-9-12 1/2 = 158 1/2 poles to post + stake  
 in fence on east side wood land fence  
 S 9 1/2 W 45 pks from west fence on wood land  
 = E

Woodland in Hardin Co.

Line 5 = E

N 59 1/2° W 8-29 = 14.16 to stake at  
west side fence = F

Thence inside with fence from F to A  
= 2-9-41 = 59.64



The above survey as made by  
Saml. A. Buchanan.

May 9<sup>th</sup> 1881.



# Kauffman's Survey of

Line - Stake 1 N 59 1/2 E  
Dist Stake 1 to Stake 2 = 1-5-3 = 30.12

Line 2 - Stake 2 at d. side fence  
S 88 E, Stake 2 to Stake 3 = 3-8-11 = 76.44

Line 3 = Stake 3 - at 1/4 in line on d. side  
with fence  
S 13 1/4 W, at 40.10 poles pass over a stone  
3 to 4 = 3-6-0 = 42.00 strike east of <  
20 1/2 links var = 82 in 72. = S 24 1/2 W

Line 4 = Stake 4 - with fence  
N 79 1/4 W  
Dist 1-3-7 = 26.28 poles 4 to 5

Line 5 - Stake 5  
at 4 cross fence  
N 56 1/2 W 5 to 6 = 1-2-32 = 25.28

May 10<sup>th</sup> 1881 Surveyors

# Wood Land

Line 6 = Stake 6  
S 22 1/4 W  
6 to 7 = 8-46 = 17.84 poles

Line 7 = Stake 7 from 7 to 8  
S 18 1/2 E = 1-5-18 = 30.72 poles

Line 8 = Stake 7 & from 7 to 9  
line of timber to run from 7 to 8 then to 9  
S 22 1/4 W = 1-1-38 = 23.52 poles

Line 9 = Stake 9 to Stake 10  
N 22 1/4 E = 2-45 = 5.80 poles  
7 to 10 = S 22 1/4 W <sup>23.52</sup>/<sub>3.52</sub> = 17.72

Line 10 - Stake 10 to 11  
N 41 1/4 W = 2-1-25 = 43 poles



## Kauffmans Surv. Good Land

Line 11 = Stake 11 = rough line 11 to 12  
 $N 39 \frac{1}{4}^{\circ} W = 1-7-5 = 34.20$

Line 12 with fence 12 to 13  
 $N 89 \frac{3}{4}^{\circ} E = 16-21 = 12.84$

Line 13 = Stake 13 to Stake 1  
 $N 9 \frac{1}{4}^{\circ} E = 6-12 \frac{1}{2} = 12.50$  poles

Total  $N \frac{1}{2}$  acres in Young  
 Survey = 49.2 a.

## Fair Ground Survey

- 1 =  $S 86 \frac{1}{4}^{\circ} E$  14.55 ch to cor. at stables
  - 2 =  $N 3^{\circ} E$  8.86 ch to NW cor Fair Grounds
  - 3 =  $N 45^{\circ} W$  1.02 ch to post on N. side of race
  - 4 = Along N. side of race with meansing to a stake
  - 5 =  $S 31^{\circ} W$  9.44 ch to beginning
- No. Acres 11

Surveyed Aug 5 - 1881

- \* Samuel Miller Survey Aug 9th 1881
- E pt S E gr sec 28 T3 R14 Mrs = 111.74 a.  
 N. E. pt N. E. gr sec 27 " " " = 58.56 a.  
 N. W. cor. N. W. gr. sec 21 " " " = 670 a.
- 1 = Beginning at the S.W. cor. sec 28. in Cent. of road: thence  $N 3 \frac{1}{4}^{\circ} E$  40.01 ch passing lane leading to the house at 11.58 ch to a stone N E cor. to said S E gr.
  - 2 = With cent. of road  $N 86 \frac{1}{4}^{\circ} W$  27.78 ch to a stone & rock at end of board fence.
  - 3 = With N. side of road  $S 3 \frac{1}{2}^{\circ} W$  67.43 ch crossing road at about 9 ch to a stake near and west of a large gate post 69 feet from Cent. of main track of the C & O R R

(over)



## Fair Grounds Survey

A = post in N line fair grounds from which a post in center of Bell & W L of Free Pike bears  $N 86\frac{3}{4} W$  27.60 p. being the south west corner to a tract formerly of 16 a. belonging to Lindsey & Walker  
 post A is 4 feet south of present iron fence

Line A. Start at post a  
 $N 31 E = 1-9-0$  38 poles  
 to a post in north line of Lindsey & Walker 16 a tract at the north side of Mill Race

Line B start at post a  
 thence with line between fair grounds & Walker  $N 86\frac{3}{4} W$   
 $= 1-3-40 = 27.60$  poles to fence  
 pike SW to Walker

Line C start at joint fence on cut pike was  
 with pike  $N 3 E = 0-8-15 = 16.60$  to cent stone  
 culvert

## \* Saml Miller Survey Continued

- 4 = Parallel with RR  $N 68\frac{1}{2} E$  12<sup>57</sup> ch to a fence post -  
 5 =  $S 2 E$  37 links to a fence post 44 feet from cent. RR  
 6 =  $N 68\frac{1}{2} E$  24<sup>09</sup> ch crossing road, into Dec 21 at 18<sup>47</sup> to a stone 44 feet from cent. of RR  
 7 =  $N 3\frac{1}{4} E$  12<sup>25</sup> ch. to a stone, W oak 18  $S 3\frac{1}{4} W 31$   
 8 =  $N 2\frac{1}{2} W$  5 ch to beginning -  
 = 177 acres

Nancy Green Survey Aug 15 - 1881  
 Entry No. 9951

- 1 - Beginning at a stone E of a school house  
 4 in a County road 70 l. S. of a Hawthorn 8 in  
 $N 1\frac{1}{2} E$  9<sup>12</sup> ch. to a stone  
 2 - Co. 75 l. to a reddish stone.  
 3 -  $N 9\frac{1}{2} W$  17.95 ch to a stone  
 4 -  $N 83\frac{1}{4} W$  4.60 ch to a stone 5 l. from ash stump  
 5 -  $S 6\frac{1}{2} W$  24.95 to a stone in said road, a sugar tree N 80 l.  
 6 - With road  $N 77^{\circ} 26' W$  8.11 to a stone  
 7 -  $S 89\frac{1}{2} W$  17.29 ch. Creek at 13 ch. to a stone at intersection of another road near grave yard  
 8 -  $S 2 E$  13.14 ch to a stone  
 9 -  $N 62 E$  25<sup>85</sup> ch - Creek at 10 ch to a stone  
 (over)

## Nancy Green Survey Continued

- 10 = N2W 12<sup>17</sup> to a stone in road a double  
walnut tree S31E 44 l. & a Log in 15 in  
N36W 40 l.
- 11 = S77° 20' E 7 ch passing S. house to beginning  
62<sup>06</sup> Acres

6664 RR Co. Surv. Aug 16 - 1887

N & V Sec 12 T3 R13 DeGraff

- 1 = Stake in E. Side Koke St. 253' from Cent RR  
& 60' from S & V lot 12 N63 1/2 E 327' to a  
Stake in Sec. line
- 2 = With Sec. line N38 3/4 E 351' to S. Side of pike
- 3 = N83 1/2 W 79' to a stake
- 4 = W. Side Hays St. S62 1/2 W 235' to N & V  
to Mrs. Heston's lot
- 5 S78 1/2 E 82'
- 6 S63 1/2 W 132'
- 7 With E. Side Koke St S78 1/2 E 263' to  
the beginning  
27<sup>98</sup> acres