

Expenses } Apr 17  
1893

Car fare to Lewistown \$1.00  
 Sam Rubin 1.00  
 Board at Hotel — \$2.00  
 " Mrs Reams — 1.50  
 Supper at Urbana 25  
 5 days = first week \$4.75  
 Second trip May 8 \$1.00  
 Car fare 25  
 and Rest — .25  
 Board at Mrs Reams — 1.25  
 Wilson Hann 75  
 Morgan + Congals 75  
 Geo Williams 75  
 Jagers 25  
 Car fare 25  
 5.25  
 Total \$10.00

	May								
	8	9	10	11	12	13	22	23	
Helfers									
D. G. Devore	1	1	1	1	1	1	1	1	6
H. R. Moore	1	1	1	1	1	1	1	1	8
French Enosh	1	1	1	1	1	1	1	1	8
H. C. Moore	1	1	1	1	1	1	1	1	8
G. C. Congals							1	1	2
Jackson Evans							1/2	1/2	1
H. R. Moore							1/2	1/2	1
Wm Moore							1	1	2
H. C. Moore							1	1/5	1 1/5

Wates and Plats  
 of Lands  
 and

Fractional Parts of Lands  
 on the County Line  
 Between  
 Logan and Champaign  
 April 1893

By H. C. Moore <sup>Sam</sup>  
 For

James C. Wanders  
 County Surveyor  
 of  
 Logan County  
 Ohio

	April					
	7	10	11	12	13	
Helfers						
Daniel C. Devore c.c.	1	1/2	1/2	1/2	1/2	2 1/2
Henry R. Moore c.c.	1	1/2	1/2	3/4	1/2	3 1/4
Wilbur Reams <sup>as man</sup> <sub>play man</sub>	1	1/2	1/2	3/4	1/2	3 1/4
Elwood Loudon				1/2	1/2	1
Put in with Reams						
H. C. Moore	1	1	1	1	1	5

Jim Repent to J. C. W.

TABLE for reducing DEBITORS





4658  
4678

$r 57 \frac{3}{4} W$

16. ~~46~~ 46  
John R. Wilson

was  
waggy

20.10.99  
284.25 W

Isaac Waggy  
now

John R. Wilson

$16.46 - 1 = 16.45$   
6.56

12.83  
29  

---

1312  
6.56

9870  
8225  

---

4870  
1079120 acres

in Logan co

$35 + 1 = 36 \div 2 = 18 \times 29$

$\frac{29}{102}$   
 $\frac{86}{100522} a = \frac{11}{100}$

geese bowle

S 35 1/2 E

29

9.50

12.83

S 31 1/2 E

4658 9.50  
4678

26.33  
9.30  

---

16.83

S 61 1/2 W

11.11 stone

S 58 1/2 W

20.56

11.11 stone

25.67 d'

John R. Wilson

error's

S 57 3/4 W

47.20

S 35 1/2 E - stone

9.50

57.40 W

16.46

12.07

18.30

Lea Condit

J.R.W.

P. Moran

H. Ham

will not below 127 too much E  
(see 4 leaves farther <sup>32</sup> on) " E  
from X S 35 25 E 15.46  
then S 35 50 E 9.32

24.78 W

3.61 a Champaign Co  
in Logan Co.

S 56 1/2 W

11.11 stone

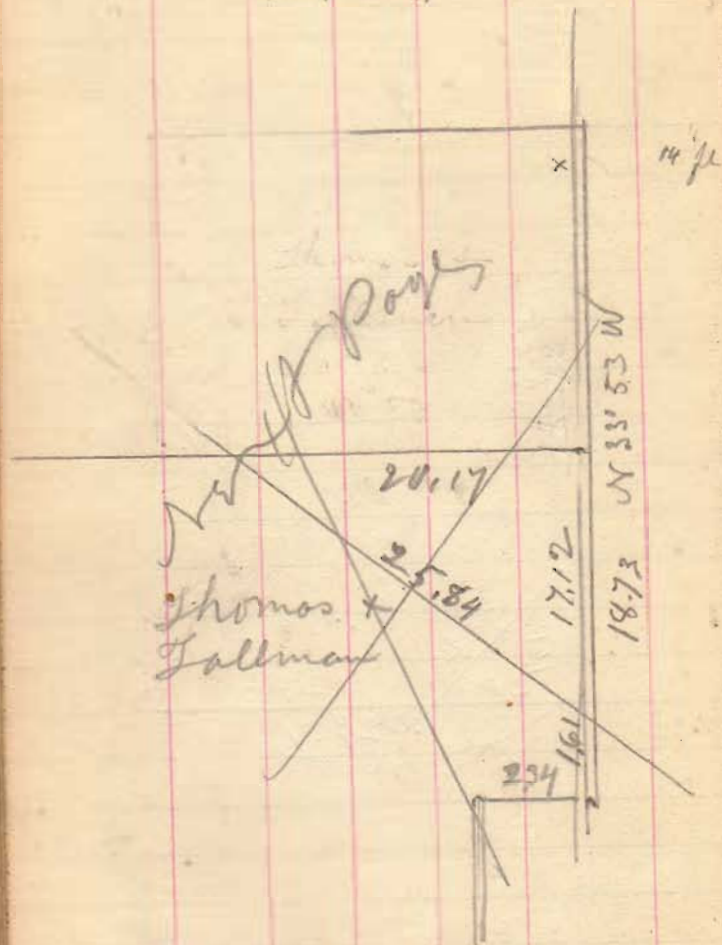
S 61 1/2 W

20.56

18 1/2 stone

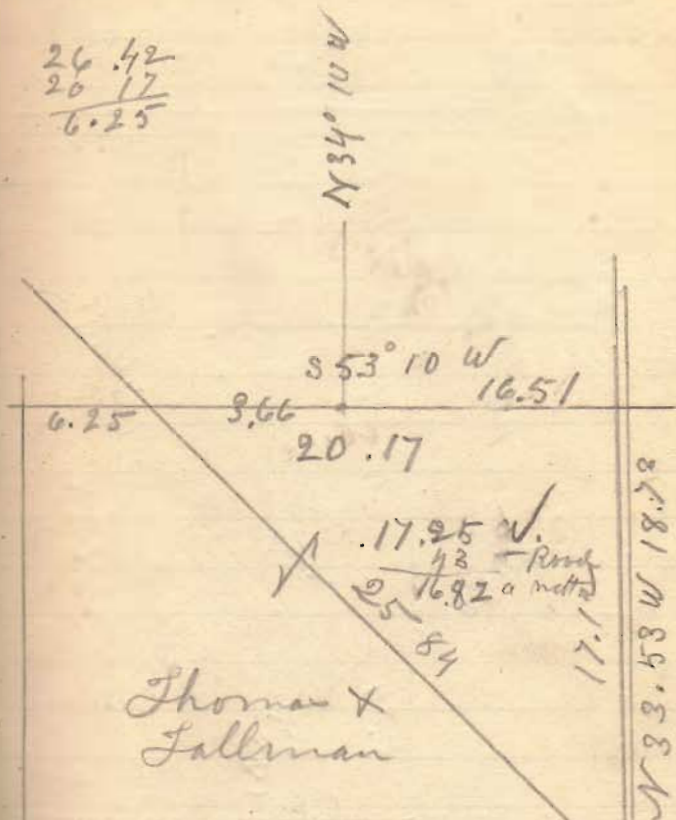


4859



4859

$$\begin{array}{r} 26.42 \\ 20.17 \\ \hline 6.25 \end{array}$$



$$17.12 - 2 = 17.10$$

$$17.10 \div 2 = 8.55$$

$$\begin{array}{r} 20.17 \times 8.55 \\ \hline 8.55 \end{array}$$

$$10085$$

$$10085$$

$$16136$$

$$17.24525 = 17.25 a$$

25.78 Road + 30 to N of Sta

48.59.

N 54 1/2 E

Stone + Iron Bar

N 85° 20' W  
J.H. Kullbert

N 34° 20' W 19.68

9.91

Mary P. Reams

N 34° 10' W  
24.76

Judy

24.65 a  
1.67 a ch.  
22.98 a Log  
23 Road  
22.75 a nett.

2502  
2476  
4978  
2489  
9.90%  
1244  
22481  
401  
22882  
16674  
229579

ok Logan

6.25  
2.67  
4.375  
3750  
1250  
186875  
O.K.

Stone  
5.34  
8.04  
6.25  
9.91 ch  
3.66  
S. 53° 10' W.  
9.91 ch

Stone at old cor  
14 3/4 ft N. of Present L

4697

714  
14  
6.99

528 3/8

J. W. Hain  
stone S. 55° 40' W.  
27.32

Johnson  
111

N 57° 51' E

N.B. Johnson

J.H. Hurlbert

48.52 a Log  
1.22 a Road  
47.31 a nett.

4 85° 20' W

H. 60  
63 1/2  
63 3/4

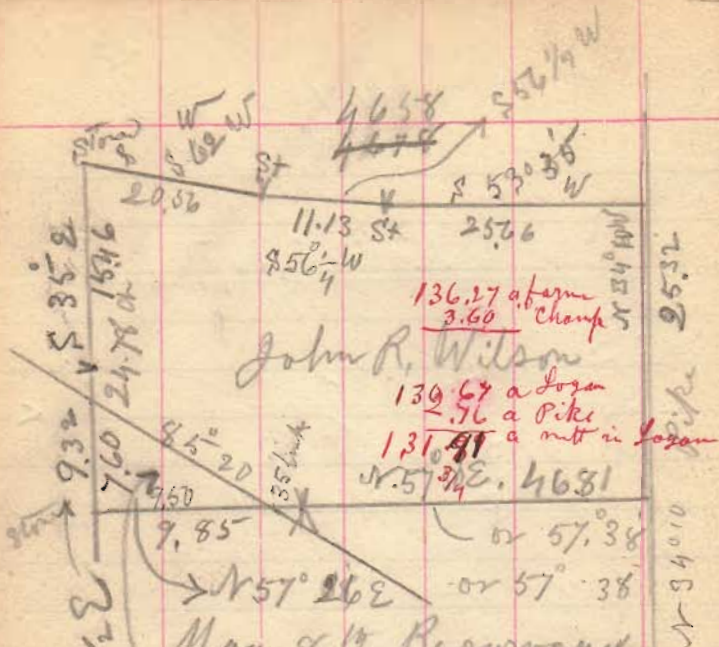
6.99  
18.32  
24 + 6.12 = 6.36  
all in Road

27.66 ch  
4 85° 20' W

9.62  
N 33.15 W  
N 34° 20' W 25.02  
19.68  
5.34

\* corner in ch = 1/5 of 100 a  
but not included in area.

a to N 34 1/2° E 15 ft W of Sta  
Passing cor at x

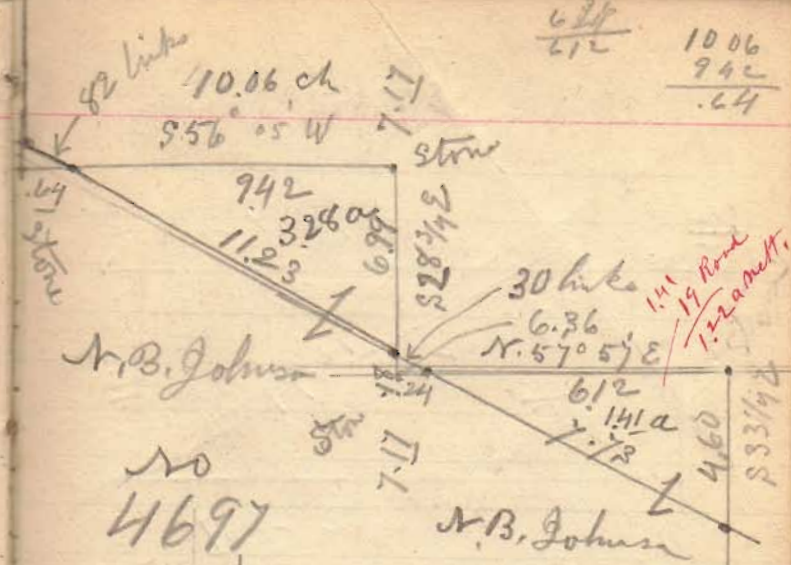


John R. Wilson  
 136.27 a farm  
 3.60 Champ  
 139.67 a Lozan  
 2.76 a Pike  
 131.91 a mt in Lozan  
 N. 57° 26' E. 4681  
 or 57° 38'  
 or 57° 38'

May 8th Resurveyed  
 (See Blotter)  
 + adjust.

S 35 1/2° E

7.59  
 4.75  
 37.95  
 5  
 30  
 136  
 1.60  
 3.60  
 05.25 acres



N.B. Johnson  
 4697

S. Dha  
 West to

Thos Westly (claim  
 not measure)

4.91  
 3.28  
 141  
 9.60  
 1.19  
 9.41  
 N.B. Johnson  
 mt in 3 part all on farm  
 + all in Survey

9.30  
 1.50  
 8.80

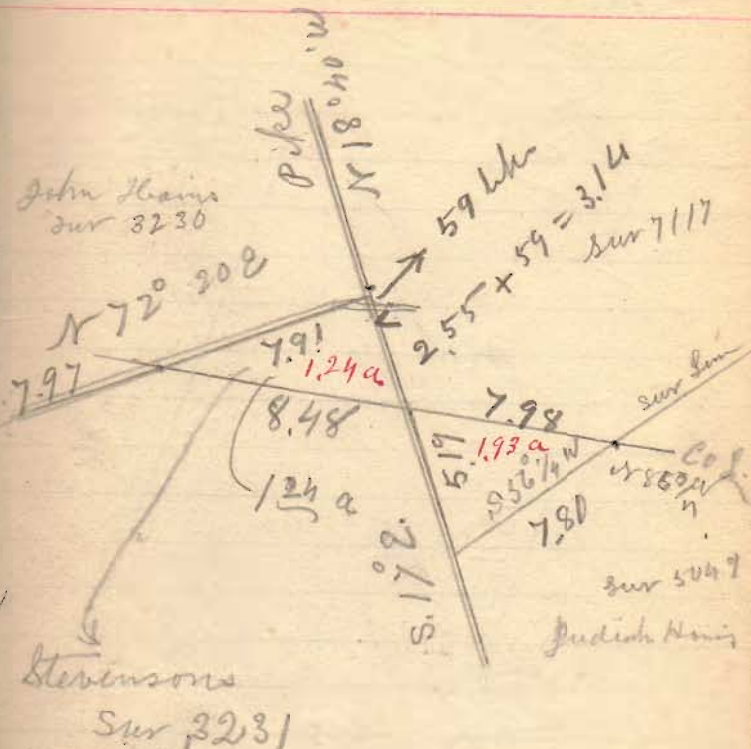
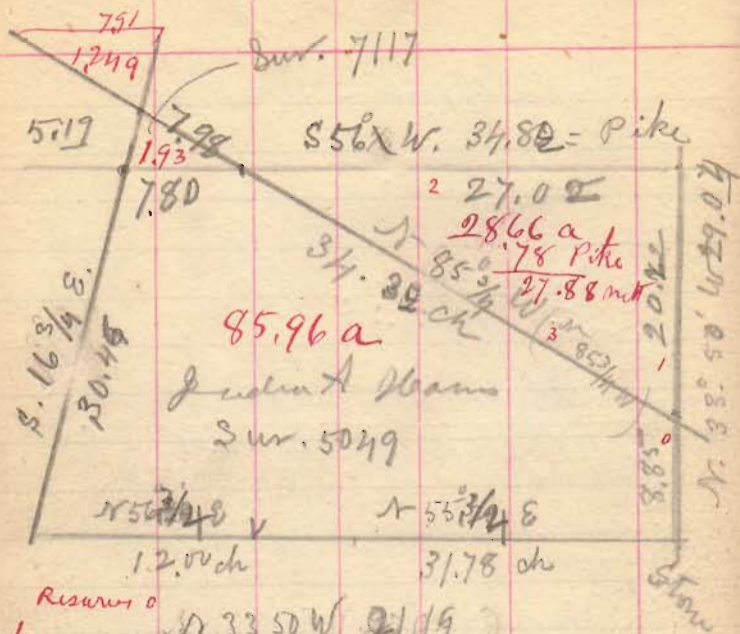
14680  
 4168  
 491480 u

6.12  
 23.0  
 1836.0  
 1224  
 1407.60

6.12  
 212  
 10.06  
 9.42  
 .64







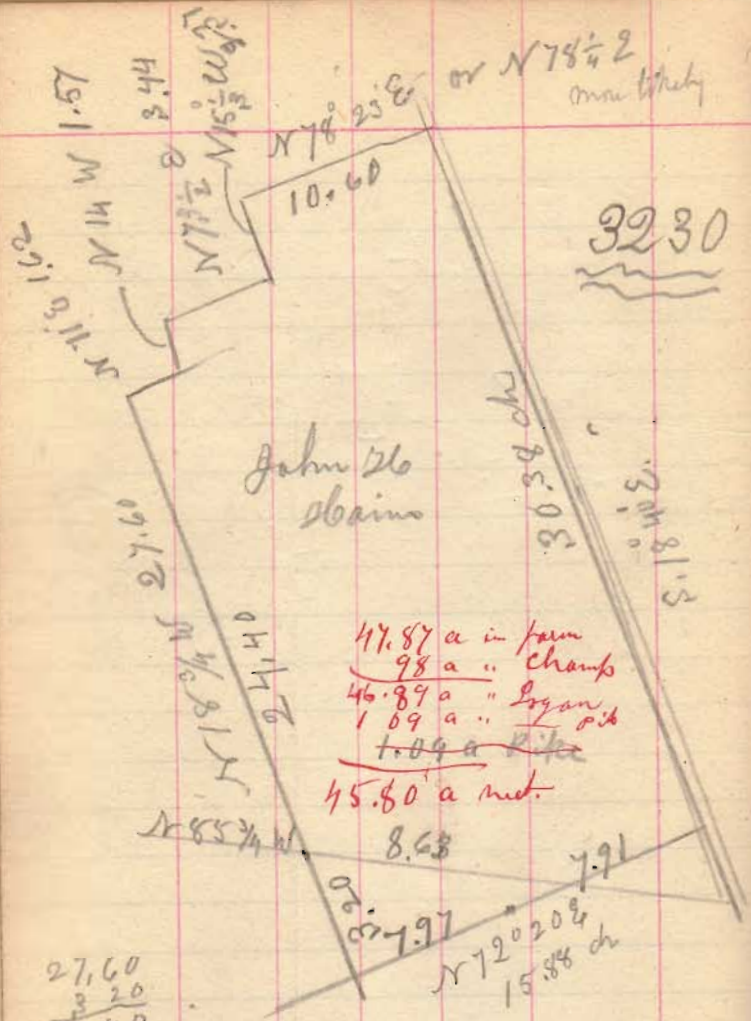
- Resurvey
1. N 33 50 W 21.19
  2. N 55 57 W 27.02
  3. N 85 3/4 W 34.32

Judith A. Hains Deed  
 Region at west cor Pelham Dec 5043  
 + D. cor to Dec 7117  
 Then N. 53° E 136 3/4 P. to stone  
 3 3/5 poles short of orig N. cor  
 of Dec. Then S 38° E 113 1/2 P.  
 to stone at John W Hains cor  
 Then S. 57° W, 171 3/4 P. to  
 stone in front center of Road  
 Then N. 21° W, 118 Poles to highway  
 cor 108 3/4 acres

Stevenson  
 Sur 3231

By Lat + Dep.

Judith A. Hains N line  
 Enoch L at Bridge at 17.71 ch  
 Leona Pike 24.50 ..

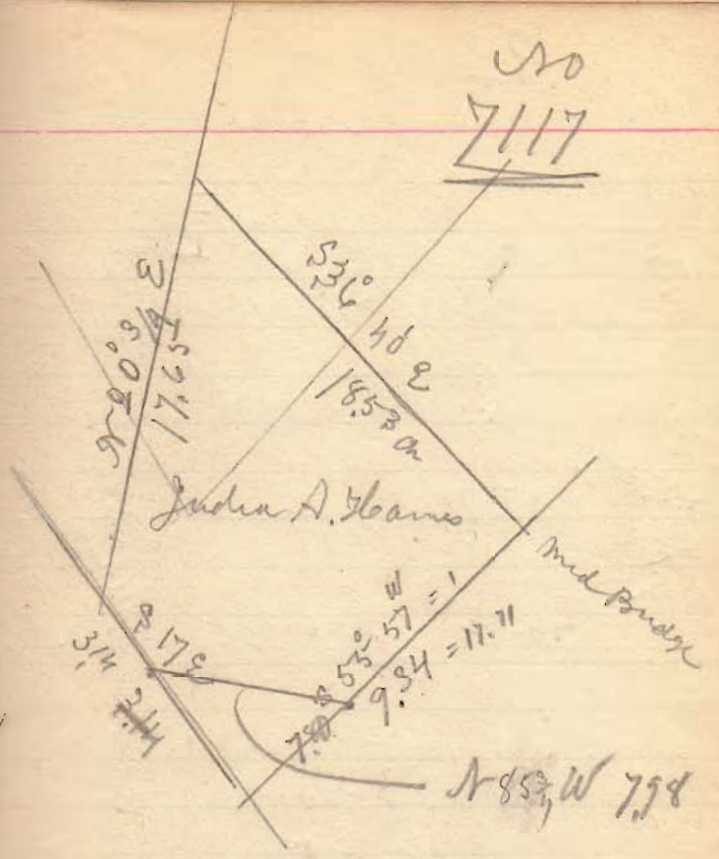


$27.60$   
 $\frac{3.20}{24.40}$

$30.97$   
 $\frac{39}{30.38}$

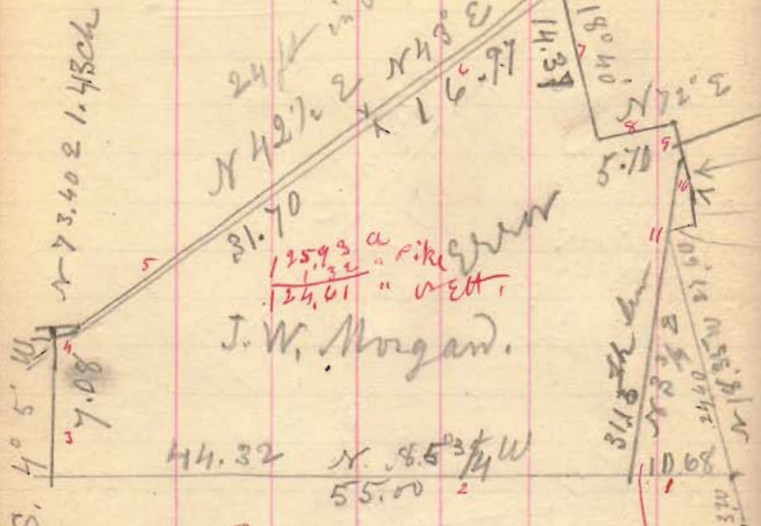
John Stearns

30  
7117



This Piece will not balance

3230



24 in Pike  
N 42 1/2 E  
N 43 E  
N 16 1/2 E  
31.70  
125.93 a  
124.61 " a  
J. W. Morgan.

44.32 N 8.5 3/4 W  
55.00

Resurvey

- 1 N 86 5/8 W 10.65
- 2 N 86 + N 86 5/8 W 44.32
- 3 N 50 20 E 7.08
- 4 N 73 7/8 E 14.2 1/2
- 5 N 42 35 E 31.70
- 6 N 43 10 E 16.97
- 7 N 18 40 W 14.37
- 8 N 72 10 E 5.70
- 9 S. 16 1/2 E 3.75
- 10 N 16 1/2 W scant 6.95
- 11 N 3 3/4
- 12

14.32  
in  
Lane.

- 3.75 ch from the line to L
- S. 16 3/4 E 10.71 = 69
- N 14 W 1.57
- N 71 E 1.62

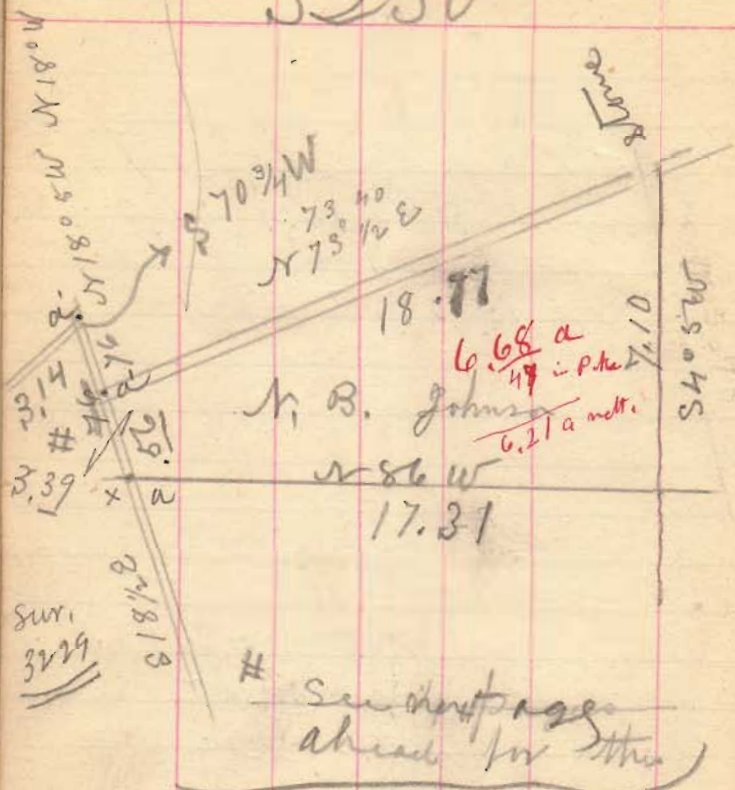
Township corner

- 1/2 Round elm stake
- W. Ash 12 N 84 W 30 1/2 links
- Ash 14 N 30 E 35 "
- W Oak 14 S 81. E 28 "

and 320 ch W of stake  
no. 219.84.8

the line N. 3 1/4 E  
at 31.13 ch from W link E  
of the line stake in  
Morgan + William line  
3.76 ch S. of them N. cor

3230



N. B. Johnson  
 6.68 a  
 49 in pike  
 6.21 a mlt.  
 18.77  
 17.31

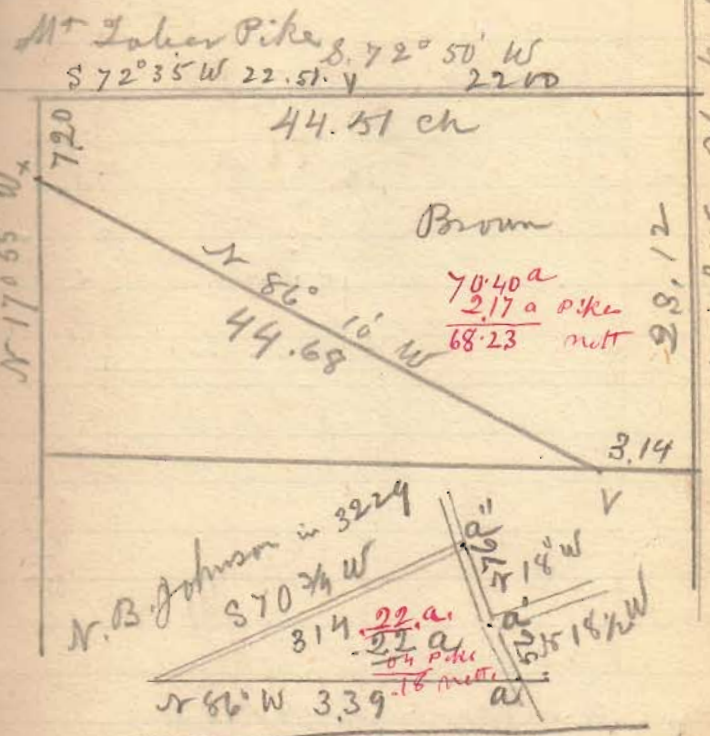
# See drawings ahead for this

x 25.8 in w of 262,52.1 cut Pike  
 262.77.8  
 at a, a' & a'' each an iron barrow hole

Sum from Johnson to Bone  
 265. + 2 = 265.02 ft

Miss a cor. 5 1/2 ft

E. Brown  
 3229



N. B. Johnson in 3229  
 S 70 3/4° W  
 3.14  
 22. a  
 2.1 a  
 0.4 pike  
 1.8 mlt.  
 N 86° W 3.39  
 N 18° W  
 N 18° W Black Line Pike

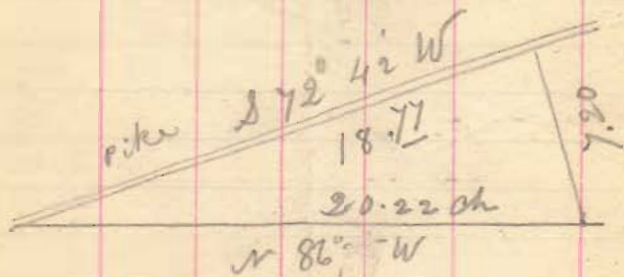
Sta. 265,00 + 2 = 265,02 ft  
 x 6 short of N 294.68 ft

E. Eric 24 ft in Pike  
 N side 20 " " Pike

a, a' + a''  
 each an iron barrow hole

3229

A. C. Williams

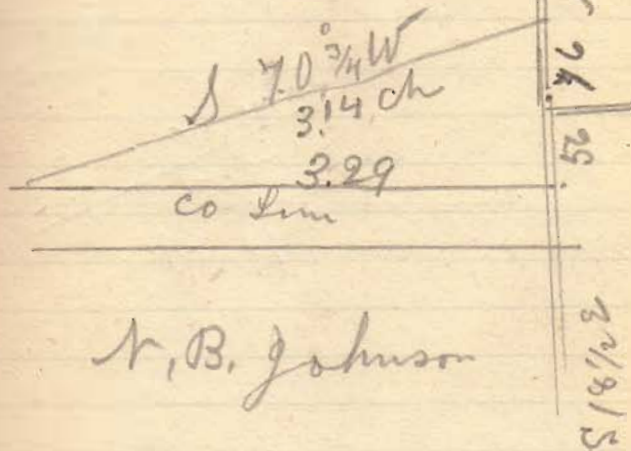


6.75 a  
 55 pike  
 6.20 sett

9.17

Run from stem at William  
 S. 2. com through line  
 tree near Co line

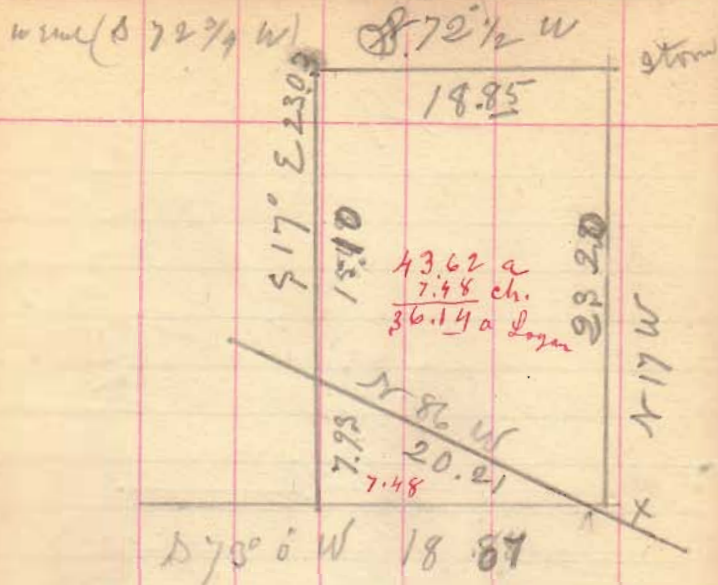
3229



N. B. Johnson

See 2 Pages forward

22 a  
 4 a pike  
 .18 sett



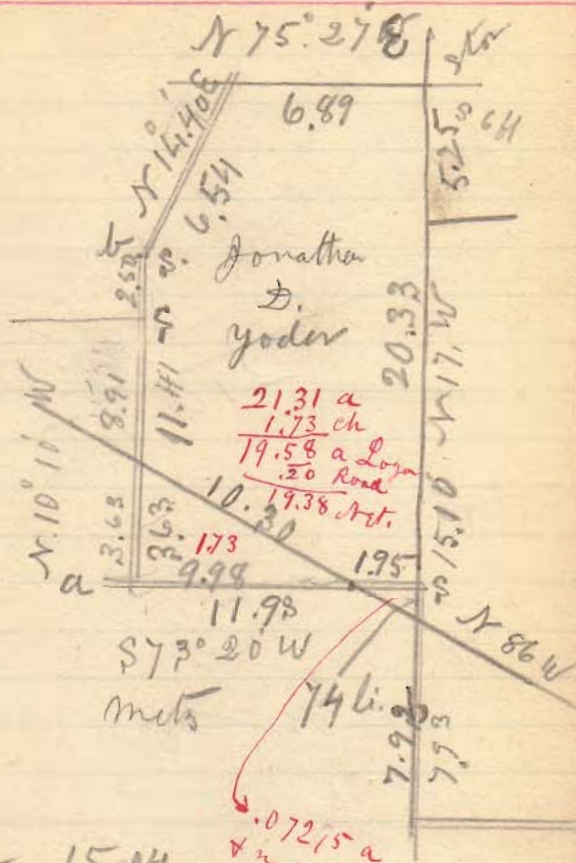
Yoder  
 43.62 a  
 7.48 a ch  
 36.14 a Logan

x 1/4 of Co line  
 94 links from east side  
 to No 308, 637

29.33 to Pike

29.33	2
28.25	25
5.35	35
0.00	0

23.03  
 7.93  
 15.10

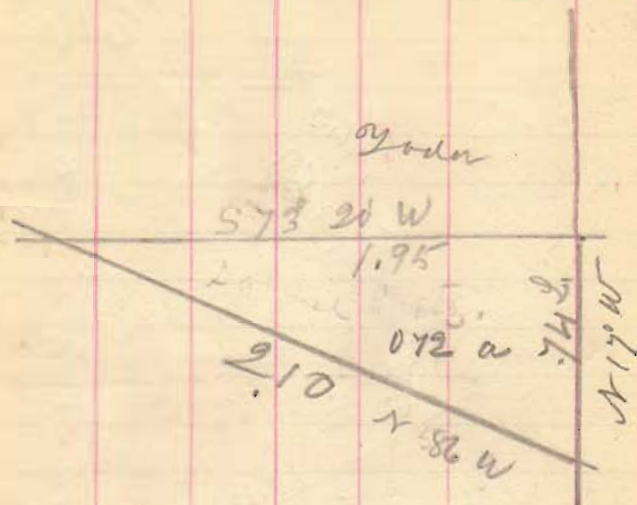


a to b 15.04

11.93  
 19.58  
 9.98

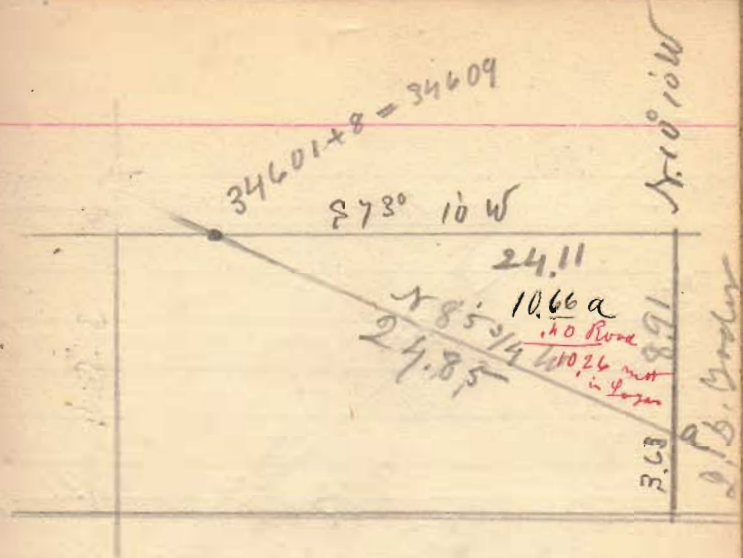
15.04  
 3.63  
 12.41

15.04  
 2.30  
 12.54  
 3.63  
 8.91



$$\begin{array}{r} 195 \\ 37 \\ \hline 1365 \\ 585 \\ \hline .07215 \text{ a} \end{array}$$

and nearly all in  
Pike  
which is on E. & N. Sides.



Jacob D. Hunt

$$\begin{array}{r} 73 \\ 12 \\ \hline 85 \end{array}$$

$$\begin{array}{r} 2411 \times 884 \div 2 = \\ 4192 \\ \hline 4822 \\ 9644 \\ \hline 9644 \\ \hline 1065662 \end{array}$$





28 link

Road

S 16° 20' E  
B. Dem  
52 link

19.62  
20  
82

S 79° 12' W 19.82  
19.00 ch  
Mets.

N 85° 40' W 20.75  
21.64  
C. Linn

6.07  
N 21° 14' W

6.17 acs. in No. 5042  
.03 1/4 " " " 5044

378.78.5

21.46  
18  
21.64  
82  
20.75-

19.82

52  
28  
80  
40 x 82 = 3280 a

S 10° 30' E 36 A 33 W 49

5044

Block L  
V. 7 Barn

Block L  
S 73° 40' W 19.68

7.99 a  
34 Road  
765 Mets  
C. York

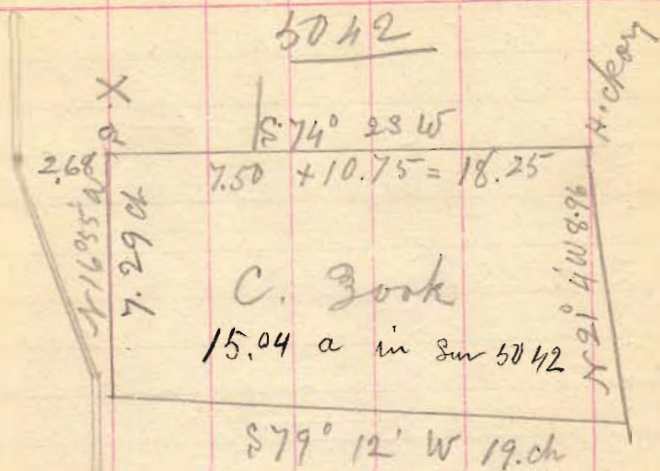
N 85° 40' W  
20.49 ch

N 55° 21' E  
7.29  
S 10° 55' E

S 79° 12' W  
82 links

x No 392.37 + 12 1/2 = 392.49





E. 271

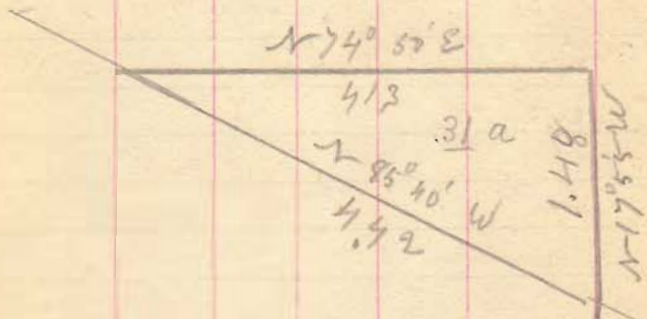
10.18  
2.68  

---

7.50

X Planted <sup>lime, 8m</sup> 2 ft 5x5 in  
marker + with 1/2 brick  
under it = Black cor

4492



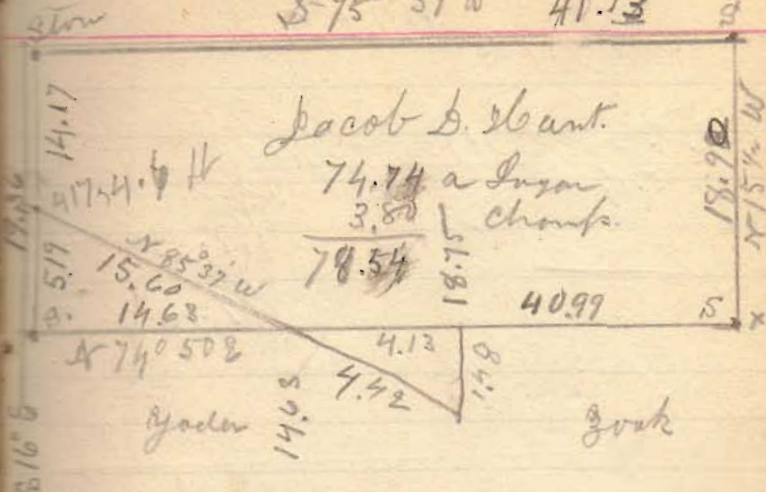
J. K. Godes

South of J. D. Hunt.

+ west of C. Book

$$\begin{array}{r} 413 \\ 74 \\ \hline 1652 \\ 2891 \\ \hline 30562 \end{array} a$$

S 75° 37' W 41.13



Jacob D. Hunt.

74.74 a Logon  
3.80 a Chomp.

78.54

40.99

Godes

Book

Run 10 in N of cor

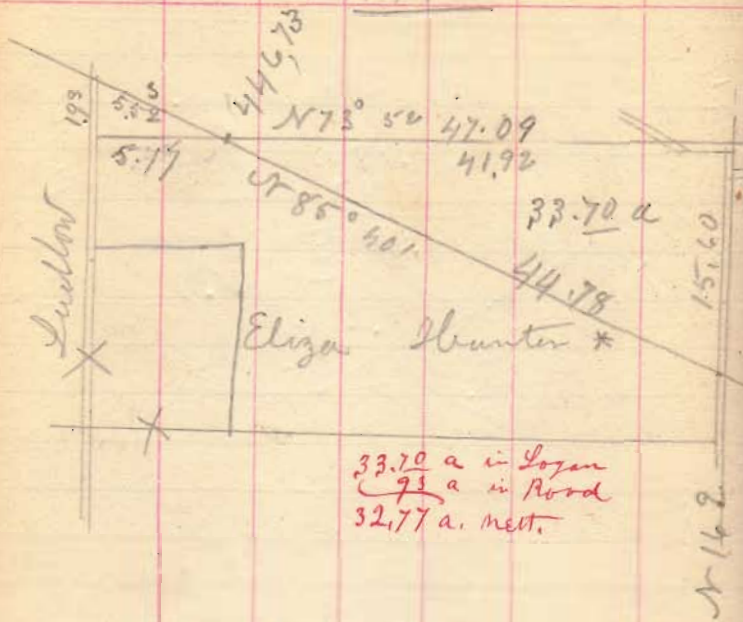
$$\begin{array}{r} 78.54 a \text{ in farm} \\ 3.80 a \text{ in Chomp} \\ \hline 74.74 a \text{ in Logon} \\ 1.24 a = Road \\ \hline 73.50 a \text{ nett.} \end{array}$$

$$\begin{array}{r} N 15^{\circ} 53' W \\ \hline 15.20 \end{array}$$

$$\begin{array}{r} 19.36 \\ 14.17 \\ \hline 5.19 \end{array}$$

Godes to him Timber 1109  
N 75° 7' E

1492



33.70 a in Logan  
73 a in Road  
32.77 a. nett.

\* Down in Estate of  
Henry Enoch  
+ part in fee simple

41.92  
7.80  
335.260  
293.44  
32.69760 = 82.70 a

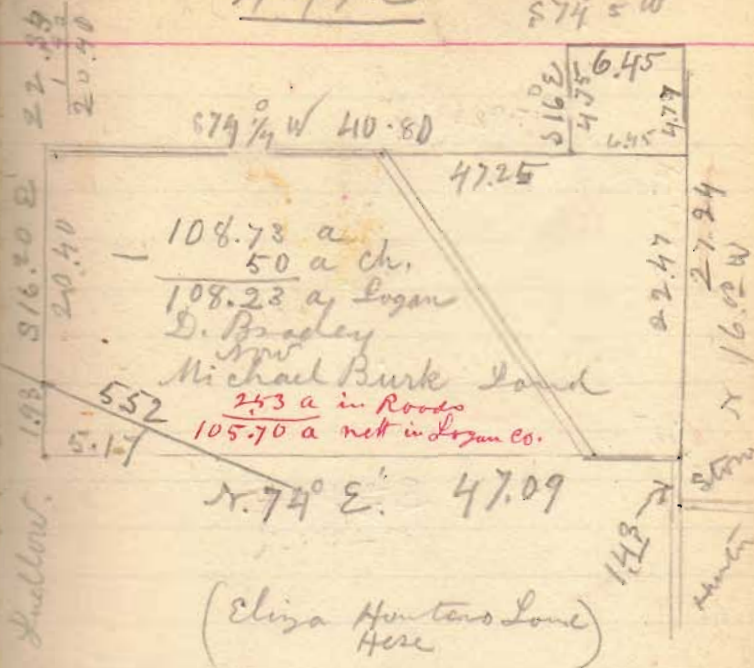
15.60  
5  
20.60  
45  
103.00  
82.70  
9.27

14.9  
14.17  
15.60

23  
16.9  
6.3

1492

S 74° W



Logan Co 108.23 a  
Ch 50 a  
Total 198.73 a in form  
on Sudlow Run  
S. 162° E. + Run 12' 11" E of  
Ston at Platf corner 4.49  
Sagwood and on 4.51 chains  
Stake at 12.23

Stake at 20.40 (Center Plug)  
L at 22.38 } Wire fence  
1.93 } 17 feet East of  
20.40 }  
47.20  
6.29  
97.52

~~E of Falls Stn 12' 4"~~  
~~S. 16° 20'~~  
~~in line shot 9 ft~~  
~~W~~  
~~S~~ 7' 4"