

TABLE for reducing PERCHES to FEET.

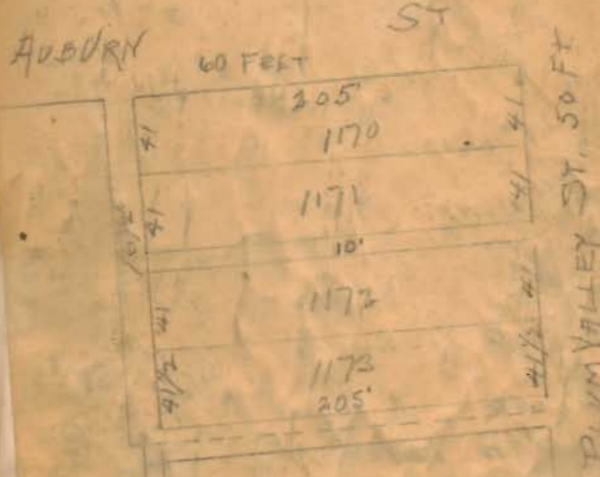
Per	Foot	Per	Foot	Per	Foot	Per	Foot
1	16.5	21	3,46.5	41	6,76.5	61	10,06.5
2	33.0	22	3,63.0	42	6,93.0	62	10,23.0
3	49.5	23	3,79.5	43	7,09.5	63	10,39.5
4	66.0	24	3,96.0	44	7,26.0	64	10,56.0
5	82.5	25	4,12.5	45	7,42.5	65	10,72.5
6	99.0	26	4,29.0	46	7,59.0	66	10,89.0
7	115.5	27	4,45.5	47	7,75.5	67	11,05.5
8	132.0	28	4,62.0	48	7,92.0	68	11,22.0
9	148.5	29	4,78.5	49	8,08.5	69	11,38.5
10	165.0	30	4,95.0	50	8,25.0	70	11,55.0
11	181.5	31	5,11.5	51	8,41.5	71	11,71.5
12	198.0	32	5,28.0	52	8,58.0	72	11,88.0
13	214.5	33	5,44.5	53	8,74.5	73	12,04.5
14	231.0	34	5,61.0	54	8,91.0	74	12,21.0
15	247.5	35	5,77.5	55	9,07.5	75	12,37.5
16	264.0	36	5,94.0	56	9,24.0	76	12,54.0
17	280.5	37	6,10.5	57	9,40.5	77	12,70.5
18	297.0	38	6,27.0	58	9,57.0	78	12,87.0
19	313.5	39	6,43.5	59	9,73.5	79	13,03.5
20	330.0	40	6,60.0	60	9,90.0	80	13,20.0
						100	16,50.0

Entered according to Act of Congress, in the year 1866, by James W. Queen & Co.,
in the Clerk's Office of the District Court of the United States, for the Eastern
District of Pennsylvania.

TABLE of Decimal Parts of a FOOT for
each Inch and Sixteenth of an Inch.

In	0	1	2	3	4	5	6	7	8	9	10	11
0	0000	033	167	250	333	417	500	583	667	750	833	917
1	005	089	172	255	339	422	505	589	672	755	839	922
2	010	094	177	260	344	427	510	594	677	760	844	927
3	016	099	182	266	349	432	516	599	682	766	849	932
4	021	104	187	271	354	437	521	604	687	771	854	937
5	026	109	193	276	359	443	526	609	693	776	859	943
6	031	115	198	281	365	448	531	615	698	781	865	948
7	036	120	203	286	370	453	536	620	703	786	870	953
8	042	125	208	292	375	458	542	625	708	792	875	958
9	047	130	214	297	380	464	547	630	714	797	880	964
10	052	135	219	302	385	469	552	635	719	802	885	969
11	057	141	224	307	391	474	557	641	724	807	891	974
12	062	146	229	312	396	479	562	646	729	812	896	979
13	068	151	234	318	401	484	568	651	734	818	901	984
14	073	156	240	323	406	490	573	656	740	823	906	990
15	078	161	245	328	411	495	578	661	745	828	911	995

Entered according to Act of Congress, in the year 1866, by James W. Queen & Co.,
in the Clerk's Office of the District Court of the United States, for the Eastern
District of Pennsylvania.



Per	Foot	Per	Foot	Per	Foot	Per	Foot	
1	10.5	21	3.465	41	0.735	61	10.065	
							81	13.365

each Inch and Sixteenth of an Inch.

✓ Howenstine Survey Liberty T^s.

Bridge & Wylie "

McKinney - Montgomery

Lockwell - King.

✓ Horn Survey

Nichols lot

Geo. Green

Mr. Wilson

Philip Leamer.

Gribble survey.

Mr. Wilson grading.

County road Reservoir

Newell - Hartzler.

Austin - Rush creek T^s.

Hamilton Bro. N. of Cemetery.

Plummer - Shipley survey

Lewis Yeck Flagman

Wes Yeck Ch. Cr.

A.R. Richey Ch. Cr.

29-5-13

✓ Howenstine Survey Liberty T^s.

Bridge & Wylie "

McKinney - Montgomery

Lockwell - King

Horn

Nichols lot

✓ George Green 4576 mound sp.

✓ Dr. Wilson 34-4-14 Lake

Philip Leamer

Gribble Survey

Dr. Wilson grading

County road Reservoir

Newell - Hartzler

✓ Austin Rush creek T^s 3321

Howenstine's Survey

Line A

A + N. E L 82 Acres

Found Walnut 2" dia.

Road has been graded.

20.57 Set stake @ pine and road.

Set Stone at $48\frac{1}{2}$ ch S. $25\frac{1}{2}$ E

On N. Line N 84 W. Variation 4°

20.55 ch Set stake @ road @ pine.

Line B.

on W Line S 4 W

Set up pole S' E @ pine at S. W L 30 A.

Set stake at 12 ch. 9 ch 13 ch.

Set stake at 12.17 ch for S. W. L 25 Acres

March 17, 1904 C.M.R.

Sec 29 T 5 R. 13. Liberty TP.

Line C S. $4\frac{1}{2}$ W.

Sea 200 ch for Black Oak at 11.47 1/2

but failed. Set stake at 12 ch. in line posts of fence.

Set permanent stake at 12.17

Wit: 8" Hickory $\begin{matrix} S & W \\ N & E \end{matrix}$ 57 lbs

" " E. 13 lbs

Line D N. $51\frac{1}{2}$ W

20.52 ch N. 34 W

Set stake at 12.17 ch from N. W L

Wit: 12" Black Oak $\begin{matrix} 104 & ch \\ 96 & lbs \end{matrix}$ N. 27 E

12" Black Oak 78 lbs. N. $54\frac{1}{2}$ E

41.07

20.54) 25.00

4.460
21.08

3520

20.54

14.640

12.17

Bridge & Taylor Survey

Ed. Bridge }
Robt. Taylor } ch. en.

Start from + pithead Ry.
measured north on pipe at
24.30 line of fence old line
called for 97 rods (24.25)
made no mark at this place

at 38.42% center of bridge over
Meadow Run.

$$\begin{array}{r} 38.42\% \\ 2456 \\ \hline 14.06\% \end{array}$$

$$\begin{array}{r} 97. \\ 56.3 \\ 4)53.3 \\ \hline 38.32\% \end{array}$$

at 38.37 center old bridge.

$$\begin{array}{r} 4)56.30 \\ \hline 14.07\% \end{array}$$

$$\begin{array}{r} 38.37 \\ 14.07\% \\ \hline 24.29\% \end{array}$$

$$\begin{array}{r} 38.37 \\ 38.32\% \\ \hline 4\% \end{array}$$

March 18 - 1904

$$\begin{array}{r} 51 \\ 97 \\ 4)178 \\ \hline 44.50 \end{array}$$

Set stake on pipe at 44.50

$$\begin{array}{r} 178. \\ 19.8 \\ 4)197.8 \\ \hline 49.45 \end{array}$$

$$\begin{array}{r} 49.57 \\ 44.45 \\ \hline .12 \end{array}$$

at 49.57 in line with
Taylor's fence (old rail)
dug for stake 25' from center
of pipe - but found nothing

$$\begin{array}{r} 12 \\ 4\% \\ \hline 7\% \end{array}$$

$$\begin{array}{r} 44.50 \\ 38.37 \\ \hline 6.13 \end{array}$$

$$\begin{array}{r} 49.45 \\ 44.50 \\ \hline 4.95 \end{array}$$

Make line between Bridge and
 Nylis in center of footer at
 44.58 1/2 from + to Ry.
 and set Nylis A. line
 at 49.57

then divide the section
 north of center of old
 bridge to Nylis A. line

bearing of footer S 27 1/2 E

set stakes Nylis A. line
 Stone - Nylis & Bridge

38.32 1/2 old meas. to bridge

38.37 new " " "

4 1/2

81.
56.3
 4 | 24.7
 6.17 1/2
38.37
 44.54 1/2
4
 44.58 1/2

49.57
44.58 1/2
 4.98 1/2
4.95
 3 1/2

49.57
38.37
 11.20
11.12 1/2
 7 1/2
 24.7
19.8
 4 | 44.5
11.12 1/2

4 | 19.8
4.95

4/17.1
4.28
33.33
37.53

Line B on Ry.
29 1/4 E

at 39.25 set spike in Ry to
measured to Elm stump 150' all
in 160

at 37.57 from over iron pipe about
supposed to be identical with old record
(Should be 37.53)

133
61
4 | 94
28.50

at 48.50 -
Set stake in center Ry.
with: Water Elm 15" 586 1/2 ft 94' lks

4/1.02
38.50

Line C
On N. line bridge - from stake
in Ry - S 82 1/2 W

Set south 12'
101
4 | 53
13.25

Set stake for dist at 13.25
Set " " line " "
" " " " " " 150
" " " " " " 26.18

at 38.60 1/2 came out 16 1/2 south
of old & stakes - (Set stake)
with: Water 20" N 11 1/2 W 2.67 ch
Total southing 4 1/2

$$\frac{13.25}{38.60} \times \frac{9}{2} = 1.6 \text{ set north } 13.6$$

$$\frac{18}{38.6} \times \frac{9}{2} = 2.1 \text{ set north } 14.1$$

$$\frac{26.18}{38.6} \times \frac{9}{2} = 3. \text{ set north } 15'$$

(over)

Line (Continued)
at S&L Nylers Bridge
N. line

35.60 1/2
13.25
25.35 1/2

Surplus whole line 10% allowed

13.25
35.60 x 10%

Make Nylers south line

25.25 + 7 = 25.32

set stake at 13.28 1/2 and 13.6'
north of line to run

Hit Elm snag 20' S 71 W 7 fms

Line 2.

Nylers west line

N 71 W

set stake on S bank of Mission

Red slough at - 8.40

Hit Sun oak 24" S 7 E - 54 fms

and also on N. bank

Line E

from stone in furrow & Naper
land bridge

N 82 1/2 E

at 11.40 set stake on bank

M. R. S.

set stone at 11.20

dist to stone ash 10" N 62 1/2 W 110 1/2 lbs

McKinnon - Montgomery

Survey of 10 acres off of the
S. 106 acres of the Horace Brooks
farm -

Frank Harris } ch. cr
Morton Rothard }

Measured on center C. S. & C. Ry.
from center road S. line 100 a.
at 42.20 ch (128.8 pole) set
stake in center of Ry.

On north line McKinnon from
stake in Ry. to fence
at east side Cherokee Creek.
set north 12' -
N 83 1/2 E

Survey 9904 March 31-1904

Line "A" with line 50' from center
of Ry. S 91 4.00 ch set stake.

Line B. same as A
S 6 1/2 W 3.00 ch set stake.

Line "C" with Ry same as "A"
S 3 1/2 W ^{4.14} 4.00 ch

Line "D" (trial south line)
from end line "C"
S 83 1/2 W $\frac{8.09}{9.00}$ ch

Line "E" (trial line from end D)
N 6 1/2 W $\frac{10.90}{10.76}$ set stake in
north line 1000000

On N. line 100 0000
Line "F"
N 83 1/2 E $\frac{10.56}{11.46}$ to
stake begin line "G"

Moved east from end of
south line "D" 90 lbs.
making S. line 8.10
set south (S 6 1/2 E) 14 lbs making
and line 10.90
set stones with broken bottles
wit blk. Hal. 24" N 10 1/2 W 62 lbs

Thence N 63 1/2 E 8.09 to point 50'
from center Ry and 14 lbs
south of stake set for end of line
"E" making 6. 4.14
set limestone with broken bottles.

On north line from begin line "F"
move east 90 lbs, making north line
10.56 set stones.

Wit N.O. 6" S 21 1/4 E 79 lbs
Ash 6" S 5 1/4 E 104 lbs

Cockrell. King Survey

March - 5 - 1904

Jacob Liddy } ch as
Chas. Harkbarger }

Start at stake found in road
side W. L. & D. J. J. - NW
Howell.

Line A -

160 ft

160 ft stone in road side of J. J.
& Liddy - & Harkbarger

at 20 17/2 to stake out today
at NW Cockrell.

" 40 55 to stake sec
NW L. W. Dille -

Went to stake SW King and NW
Howell.

Chain 12" 526 3 46 lks

Line "B"

On N. line Cockrell's southeast
5856 (Min. fence line)

at 4288. set stake with fence
for NW Cockrell.

Came out 4 1/2 miles

Line 6

on east line

set east 8' from stake

at southeast < set stone

156 ft to the fence remains of
tick stump

55 1/2 ft

set stake at 10.00 for dirt
and another for line 8 west

2020 ch.

Mt. to stone Hal (100 ft) 0'

353 1/2 ft 10 lbs

Line 9

at north 5'

with south line fence

~~11 54 1/2 ft~~ 11 55 ft

at 41.22 chain to stake at fence
came out 11 too far north
total working 6

40.58

41.22

82.10

41.05

30.17

269.45

41.05

82.100

82:87995

5288

37

58016

24864

87) 5066.56 | 35.25

261

456

430

215

174

416

20.15

20.15

20.19

52.88

50

87) 414400 | 47.63

348

35.25

664

82.88

609

550

522

280

41.22
40.88

34
87
238

102
87) 1258 | 14
87
388

41.06
40.88

.20

41.08
10

40.98

2079
857

11.62
40.98

9296
10458

46480

47.61876

41.22
74
41.08

41.22
7

41.10 | 352508.5
32920

53300
20575
27250

Matthia E. Thing 35.25
Frank Cochrill 47.63

East and west ends of
King's Bend (105, 150, 200)
8.5 / ch.

Line E

division Line Cochrill & Thing

~~30° 45'~~ at Lake at 100 - 200

30° - 85° E

at 4108 same as 10 the west
of corner stone set the day for
East end of line between Cochrill
and King.

Mk: White oak 3" 20 lbs - 1/2 1/2

More stake at 30. south 7 1/2 lbs

" " " 20 " 5 "
" " " 10 " 2 1/2 "

Horn Survey Apr. 7, 1904.
Ch. en. Vance Horn.

Horn Survey

Line A

Found a stone at Geo. Horns

N.W. corner

Measured his W. line.

No stone at his S.W. corner.

Set a stone - very large - in line of
fences at 3.25 ch. from N.W. Corner

S. 2 W.

Witness to large stone:

2 1/2" plum tree N. 7 1/2 E. 11 links

2 1/2" " " N. 10 E. 28 links.

Line B.

S. Line of tract.

Set stone in S. line by fence

at 8.08 ch

N. 87 3/4 W.

Witness;

6" Wild Cherry N. 29 E. 5 links

8" Burr Oak S. 64 1/4 E. 22 links

Apr. 7, 1904.

Line C. on W. N. 15° W.

Found stone (old) at S.E. of Shier Tract

Run W. line from stone to a stone

at intersection Ludlow line and

E. Ry fence.

3.26 ch. Set stone Witness: 4" Hick

N. 6 3/4 W. 40 links, 4" Walnut S. 20 1/2 E. 31 links

Line D. N. Line.

N. 87 3/4 W.

9.03 ch.

9.03

8.08

2 (17.11)

8.55

3.05

42.75

1565

260775 Acres.

2.60 Acres

Nichols Lot, April 11 - 1901

Front Lots 40 - 40 - 40 - 44.25

On West line bar is -
19.5' dist from face of curb -
set bar at 242

On 40' line 18.7

16.5

7.9

148.5

115.5

1303.5

16.5

10.6

99.0

165.0

1749.0

16.5

4.4

660

660

72.60

16.5

15.4

660

825

165

254.10

On 80' line - bar is 18.1'

dist from face of curb.

on 125' line

17.6

On 80' line set bar at 242'
from curb. It, fence line at
259.

East line set is 17' from face curb

on It, line - 40 - 40 - 40 - 11 1/2
to Ludlow.

Street records -

Park to Power

543'

Power St. 20' wide.

April 14 - 1924

Line on Ludlow

4.9

$$\begin{array}{r} 16.5 \\ 4.9 \\ \hline 14.85 \\ 6.60 \\ \hline 80.85 \end{array}$$

from pin S & C to this point

166.7

at this point the lot is 36' wide

$$\begin{array}{r} 166.7 \\ 17 \\ \hline 183.7 \\ 9 \\ \hline 174.7 \end{array}$$

On N. line S. line Alley
40-40-40-111

On Ludlow's Alley extends 188'

West line West lot - $242 - 19.3 = 222.7$

East " " " $242 - 18.7 = 223.3$

" " 2d " $242 - 18.1 = 223.9$

" " 3d " $242 - 17.6 = 224.4$

$$\begin{array}{r} 80.85 \\ 15.1 \\ \hline 62 \end{array}$$

George Green Survey

In Survey 4570-

Monroe Township -

Geo. H. Green } Susan Johnson
Marion Green } ch. ex. Mrs.

Line on Co. road from Stone

5112 Bentley William 20 acre

Tract. A41E 7.25 with road
set stone in center of road.

Line "D"

A. Linn Green from stone at road
to stone 5000 A41E

561E 22.72 to stone

May 2 - 1904

Line "C"

533 1/2 ft. stone to stake

with sugar 26" A41E 27 1/2

526 1/2 ft

Line "D" set south 15'

A41E 16 1/2 ft

at 25.03 ft stone begin

came out 30' south

total southing 15'

(V.K. Cor. A41E 16 1/2 ft)

Iron Survey

Line D

Start back set south 8'

~~360° to~~

at 8:00 set stake

" 14:00 " " "

" 16:00 " " "

" 20:00 " " " set south 8'

" 22:00 " " "

Came out 2 1/2' south total northing

16 - 2 1/2 = 13 1/2'

$$\frac{27}{2} \times \frac{8}{25} = \frac{108}{25} = 4 \frac{8}{25} - 8' = -3 \frac{17}{25}' \text{ set north}$$

$$\frac{27}{2} \times \frac{14}{25} = \frac{189}{25} = 7 \frac{14}{25} - 8' = -\frac{11}{25}' \text{ set north}$$

$$\frac{27}{2} \times \frac{16}{25} = \frac{216}{25} = 8 \frac{16}{25} - 8' = +\frac{16}{25}' \text{ set south}$$

$$\frac{27}{2} \times \frac{20}{25} = \frac{54}{5} = 10 \frac{4}{5} - 8' = +2 \frac{4}{5}' \text{ set south}$$

$$\frac{27}{2} \times \frac{11}{25} = \frac{297}{50} = 11 \frac{23}{50} - 16' = -4 \frac{7}{25}' \text{ set north}$$

Dr. Wilson lots Plum Valley Auburn May 5 - 1904

Survey to ascertain ally line
and street line for building
concrete culvert on Possum
Run -

Measure from west curb
Plum Valley $12\frac{1}{2} + 205 + 16\frac{1}{2} = 234$

Dist on east line of Culvert from
end of bridge about 88'

Dist to S. line Auburn 81 - 18.7

Dist on west line of culvert from
end of bridge about 110'
Dist to S. line Auburn 18.7

Levels Dr. Nelson Culvert

Bm.		20.00
In	5.18	<u>15.15</u>
Bridge floor	3.93	21.25
Chan	10.09	15.15
"	10.16	15.02
"	11.50	13.68
"	9.86	
Surface	5.60	
Center St.	4.20	

May 5 - 1914

Bm. Top Sand East Abut.

Chan. S. side Abut.

" " " "

" 100' North of St. side Abut.

" at west line Alley Nelsons Add.

Surface ground in lot west line Alley.

Center Street in west line Alley.

Hill Survey May 6-1904

On N. line Sec.

Start from stone mark in fence
at 40.00

at 40.10 1/2 old stone dug out
said to be disputed

at 50.33 stone in road Mrs.
Sec.

Philip Leomin Survey

West line Sec. 30 -

Stone SW¹/₄ - large Mon.
22' east of SW¹/₄ Sec. 30 -

SW¹/₄ Sec. 30.

Burr oak 20" S 35 1/2 W 127 lks.
Maple 18" S 48 1/4 E 173 "

Bearing N 1 1/4 W -

Length of Sec. from SW¹/₄ to NW¹/₄

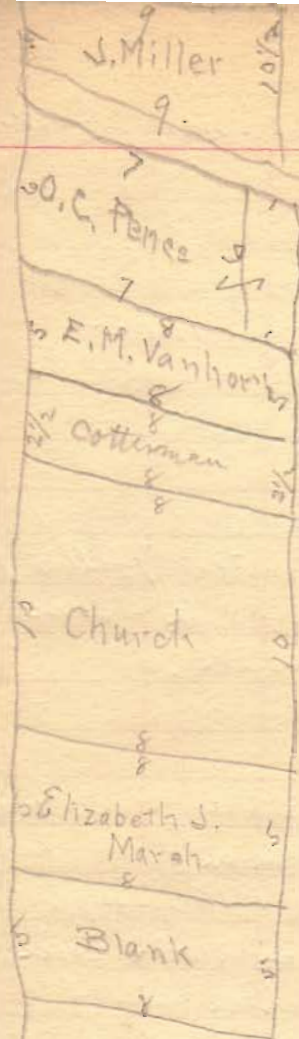
80.44

at 40.22 center - line -

" 45.05 " " " " " " "

" 63.89 " " " " " " " "

Line (stone)



Philip Connor Survey

William Hamer }
Isaac Hamer } John
Philip Connor } mke

Line A

set stake in center of Hall & W.
Pike in line with fence
south side corner
with fence
North

at 29.63 set stake for S. line
Blank (now Hendon)

38.48 1/2 center Murchison's pole

40.46 stake in North line

Corner and center pole

set stake for Mrs Rose (formerly Miller)
at 40.23 1/2

(Note the needle did not work
freely on this line)

Jan 2 - 1904

Line B, on N. line corner
East

at 2.25 set stake for line
Rose (formerly Jas. Miller)

at 10.02 stone set for
Miller and Connor (old stone)

Line C. from stone
on line corner and Miller
South?
40.22 stone 5th corner

Line D
on south line from stone
to stake set in pit for trip
sq ft 10.01

N. side Turner stable
1.25 south of corner N. line

10 1/2 ft = 2.62 1/2
23 1/2

2.86

On line Rose lot of line
2.25 set stake at this end
from east side and 20 the
south of corner N. line

Thence to NE, cor Turner
stable 51E 107

Thence to corner post north
side of Muchmuffin pit
154 2 1/4 ft

on south line of Dummer
 from stone + fence to
 stake S < Dummer
 2.45 169 1/2 ft

on east line of lots south
 of Muchmuffin's fence set
 from stake set 2 ch
 from point at 29.63 to
 an iron bar set by H. M.
 for S < Barnhart
 formerly Pencer - to stake
 at north side Muchmuffin's
 fence 5 1/2 ft 8.37 to
 S < Barnhart -

and 30% lbs 169 1/2 ft from Dummer S <

6 rods	
5	
2 1/2	4) 33 1/2
10	8.37 1/2
5	
<hr/>	
28 1/2	
5 1/2	
<hr/>	
33 1/2	

GRIBBLE Survey.

Ch Cr. Chas. Yeck

Ch. Cr. Henry Dorn

Ch Cr. Lewis Yeck.

Gribble Survey. June 7, 1904.

Found stake at N.E. \angle of Yeckes
1 acre. Stake been removed since
1860. and claimed to be the corner
by old residents.

Line A.

along road on north to N.W. \angle

11.85 $\frac{1}{2}$ W⁺

11.84 ch.

at N.W. \angle found stake.

old witness tree cut down.

Stump still standing. S. 10 $\frac{1}{2}$ E. 30 $\frac{1}{2}$

new witness: 12" Hickory S. 57 W 45 ch.

11.84 | 197.50 46.68

11.84
79.10
71.04

8060

7104

9560

94.72

88

16.68

11.84

66.72

13344

1668

1668

1974912

On W. line at S.E. \angle of Yeckes
10 acres at 11.47 $\frac{1}{2}$ from N.W. line
found fence but set where stake
had been driven.

On W. line at S.E. \angle of 10 acres and
S.W. \angle of 23 acres found old witness
out and end post of wire fence in
its place.

Line B.

From N.W. \angle 23 acres to S.W. \angle

S. 5 W. 085 set 10 ft. to east.

set temporary stake at 16 ch

and 17 ch S. 4 $\frac{1}{2}$ W

Line C. on East

Dug for stone at N.E. \perp of $15\frac{3}{4}$ acres
Nothing found.

Took end post at Hildebrand's

\star N.W. \perp

offset 48 lbs to E.

N. $4\frac{1}{2}^{\circ}$ E.

N. $4\frac{1}{2}^{\circ}$ E.

Set stone on top of Stake at

16.68 ch S. of N.E. \perp

Line D. on south

S. $85\frac{1}{4}^{\circ}$ E

S. $85\frac{1}{2}^{\circ}$ E.

11.84 ch

Set stone on top of walnut Stake
in W. line 16.68 ch S. of N.W. \perp

Wit: 6" Hickory N. $11\frac{1}{2}^{\circ}$ W 60 lbs

8" Oak white, S 2° W 33 $\frac{1}{2}$ lbs

Joseph Lynch

R.R. No 2, White County, Ga.

Dr Wilson grading level

grade stake			
sidewalk		20.00	
Sum	480	24.60	
Stake Sidewalk	426	20.54	
Sidewalk stake	434	20.46	
"	292	21.88	
Sta 0	3.50	21.00	
Sta. 22'	3.70	21.10	
" 49'	3.57	21.23	
" 59'	3.52	21.28	
" 90'	3.38	21.42	
" 110'	3.10	21.70	
" 140'	2.37	22.23	
Surface ground			
" 0	7.10	3.30	
" 22'	6.60	2.90	21
" 49'	6.10	2.53	31
" 59'	5.95	2.43	9/10
" 90'	5.50	2.12	30%
" 110'	5.20	2.10	19
" 140'	4.13	1.52	32
Sum.	6.35	18.45	
170	2.00	22.30	22.30
Grade point - 21.80			

West Auburn Ave. June 10 1904
Sta. 0 -

1st stake west of Poseni run on bank
of ditch. Corp sidewalk stake on line
of west line 1st beam west of curb -
At 22' a line 2nd beam
" 49' " " 3rd
" 59' E " 3rd
" 90' " " 3rd
" 110' " " 4th
" 140' " " 4th
" 175' sidewalk grade stake

26	77	21.23
32		20.46
42		1.42
92		
101		

See top East walk about Auburn Ave bridge

Dr. Wilson's grading work

June 18 - 1905

Sum 24.00

29' east 3.54 21.26

51 " 3.30 21.45

sidewalk

20.26

bank ^{20.45} ~~Pocum Run~~

Surface ground Fill

29' east 7.60 4.06

51 " 6.20 2.85

Ex ground between houses

1st & 2nd 7.20 17.60 21.40 3.80

1 & 2 6.90 17.90 21.05 3.15

2 & 3 5.10 19.70 21.25 1.55

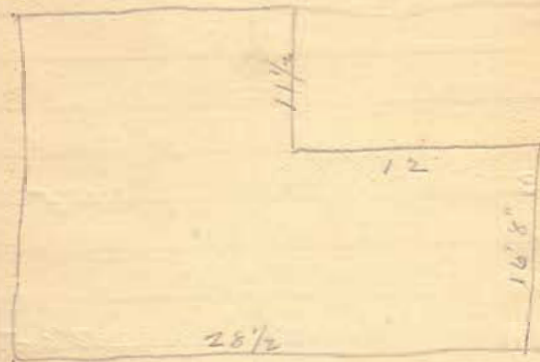
3 & 4 4.70 20.10 21.56 1.46

West of 2nd 3.70 21.16 22.23 1.13

east line of 1st house and Pocum Run

29' east of sidewalk side of the road

street line



Survey No. 1.

Stakes To Road Survey.

0	S. 0° 30' E.
110.5'	S. 86 1/4° E.
673.5'	S. 85 1/4° E.
10+00	
20+00	
22+50	
27+38	S. 80° E.
30+00	
30+60	
33+89	S. 50 1/2° E.
37+64	S. 19 1/2° E.

Oct. 17, 1904.

S. 13.5' N. of fence on E. side of road running N. + S. and C. road. E. + W.

From Sta. 0 to Sta. 1+10.5 Stakes are set 6.5' E. of Center line.

See stakes are set 20' from Center line.

Stake Center + 20' N. + S.

Stake Center + 20' N. + S.

" " " " " " "

© T. + O. C. Ry.

Stake Cen. + 20' N. + S.

" " " " " " "

Center Road. 50' to 50+99

Stakes Cen. + 20' each way.

Stakes " " " " " " "

40+57

S. 0° 0'

45+04

S. 18 E.

47+24

S. 18 E.

50+89

S. 55 1/2 E

61+32.5 X

S. 55 1/4 E.

68+32.5

73+0

S. 63 3/4 E

76+46.5

S. 75 3/4 E.

81+29.5

S. 76 1/4 E.

89+25.5

S. 76 1/2 E.

97+74.5

N. 78 1/2 E.

98+79.5

Iron Pin,

S. 79 E.

Stakes cen. + 20' each way.

Road 40' wide Sta. 0 to Sta.
50+89; 36' " " 50+89 to
Sta. 68+32.5

Center Road. 40' 50+89 to 61+32.5
Wit. 12" Red Oak S. 59 W. 39.5'
" 18" White " stamp S. 15 1/2 E. 52.5'

N. side road.
Wit. Elec. pole N. 39 1/2 W. 18.5'
Tel. " S 21 E. 40'
Stakes 18' from center. Begin
Reservoir Bank.

Edge of Bank. Stakes 20' from
center.

Stake Cen. + 20' from cen. each way

" " " " " " " "

" " " " " " " "

" " " 20 S. " "

Cen. Road.
Wit. Iron Horse N. 50 W. 29'
Tel. pole. S. 69 E. 39'

99+70.5

Iron Pin

3rd Survey of

20+53.5

N. 55 1/2 W.

24+99.5

N. 66 W.

23+14

N. 76 1/2 W.

1+86

91+0

0

Center road.

Wit. N.W. Cor. porch. S. 41 E. 89.5'

Tel. pole S. 83 W. 63'

Stokes Tp. Road.

Follow line of Survey No. 1
Sta. 26+53.5 to Sta. 0 of
Survey No. 1.

98+00 Survey No. 1.

50' N. of line of Survey No. 1
from Sta. 1+86 to Sta. 23+14 and
|| line of same.

96+46.5 Survey No. 1

At 99+94.5 Survey No. 1

At 98+99.5 of Survey No. 1.

" 99+90.5 " " "

Horn's Survey June 11, 1904 C.M.R.

Set corner between Horn
and Lewis Horn on line between
+ stone at E. side of Ry. and
+ stone at N.W. \angle of 2.60 acre tract.

Set 1" gas pipe 30" long for corner.

Line A.

From above \angle to stone in E. line
of Ry. N. 15° W. on Ludlow line

4.78 ch.

Line B. along E. side Ry.
N. 20 $\frac{1}{2}$ ° E

7.60 ch.

Set 30" iron bolt in \angle of road.

Wit: 40" Lynn 75 lbs distant S 10 $\frac{1}{2}$ ° W

14" Walnut 80 lbs distant S 10 $\frac{1}{2}$ ° E

2.75 ch.

Ed. Horn ch. Cr.

Line C

From beginning point to N.E. \angle

Random N. 21° E. 11.72 ch.

Bearing should be N. 20 $\frac{1}{2}$ ° E

Moved W. 10-1ks for corner

Set 1" gas pipe 4' long in center road

Line D. along road from N.E. \angle

N. 89 $\frac{1}{4}$ ° W to 1 inch gas pipe 4' long
at S. edge of gravel 1.86 ch.

Wit: 14" Walnut S 84 $\frac{1}{2}$ ° W 66 $\frac{1}{2}$ line

Line E. along road to iron bolt at
N.W. \angle

N. 48 $\frac{1}{4}$ ° W. 1.10 ch.

computation next page.

Computation Hart Survey

Bearing	Dist	N.	S.	E.	W.	D.M.D	N.A.	S.A.
N. 20 $\frac{1}{2}$ ° E	7.60	7.12		2.66		2.66	18.94	
S. 48 $\frac{1}{4}$ ° E	1.10		.74	.83		6.15		4.55
S. 89 $\frac{1}{4}$ ° E	1.86		.02	1.86		5.84		.18
S. 20 $\frac{1}{2}$ ° W	11.72		10.97		4.11 4.10	6.59		72.29
N. 15° W	4.78	4.61			1.24	1.24	5.72	

11.73 | 11.73 | 5.35 | ~~5.34~~
5.35

24.66 | 77.02

24.66

252.36

2.618

2.62 acres

Hugh Newell - Hartlyn

Survey June 17-1904

Line "A"

Start from stone STR Sec. 7

T. 3. R. 14 - ~~Harrison~~ Union Sp.

174 3/4 E

12.17 1/2 (48.7) down iron

bar by side of fence post.

H. H. Newell } ch co.
Benedict Roth }
Jacob Gode } notes.

Line "B"

on south line of sec -
from stone STR

S 86 1/4 E

at 27.33 center Carlisle fence.

" 30.00 set stake in line
run

set stake at 41.00

did not finish this line

Line 6"

from stone in front of
Church

Box Buy. Roths 55+ down
at 5.57 sh from Sbx $\frac{1}{2}$ sec
measured north on $\frac{1}{4}$ line

At 48

6.30 $\frac{1}{2}$

12.17 $\frac{1}{2}$

5.57

6.30 $\frac{1}{2}$

Line D

North line of Hartzler -
from stake set in east line
 $\frac{1}{4}$ sec

at 12.17 $\frac{1}{2}$ from Sbx $\frac{1}{2}$
and 6.30 $\frac{1}{2}$ " stone at church
to iron bar set for Hartzler
N 72 E

set $\frac{7}{8}$ gas pipe in center of
pipe in this line
at 6.30 $\frac{1}{2}$

at 87.91 iron bar N 72 E Hartzler
measured back 8.21 for N 6 E
Roths 10 across off of
Hartzler. set iron bar
Roths N 6 E

On east line Roth 10 acres.
54 3/4 ft 12.21

On South line Roth or
Sec. line
58 1/2 ft 821
5 1/2 ft gas pipe

Austin Survey
Jesse Austin Ch. Cr.
Driscoll Wonders Ch. Cr.

Austin Survey Rushmore Tp.

June 18, 1909.

Surveyed off 6 acres from S. E. 4 of
Halls 159 Acres

10 X 5 = 50 sq. ch.

A - Run E line by fences by agreement
between Williams and Hall
N. 5 1/2° W

13.60)	50.00		13.677
		40.80		
		9.200		13.6
		81.60		3.68
		104.00		108.8
		95.20		81.6
		88.00		

Set stake at Williams, Cordrey & Hall
Set stake at N. E. 4 of 6 acres 4.42 ch.

5	(3.68		4.08
		.733	-links per acre	50.048
		3.68		5.0048
		73 3/8		
		4.42	for 6 acres	

Wit: Double Lynn 1 link S. E.

Line B. produced E. line to 0 of pike
N. 5 1/2° W

Line D on West of 6 acres
N. 5 1/2° W

1.81 ch between Williams & Cordrey

4.42 ch Set stake

Pike 75 links between fences.

Wit: 30" Sugar N. 26 W. 37 links

Set stake in 0 pike

Line C. on South Run by fence.

Line E on North of 6 acres

Between Hall & Cordrey

S. 84 W. S. 84 1/2 W.

N. 84 1/4 E. N. 84 1/2 E

13.60 ch.

13.60 ch

Set Stake at S. W. 4 of 6 acres

Wit: 26" Hickory Elm N. 78 W. 53 links

5" Pigeon Oak S. 44 W 18 links

Line F. —

W. side of 1 red strip

S. $5\frac{1}{2}$ E 2.09 ch

set stake in oospire.

Line G. —

with pine

S. 34 W,

37 links

2.09
1.81
3.90
1.81

181
28
= 209

.19.

1.81

2.09

1.95

.20

970

370

78

70.1578

.04873

Tract N. of Cemetery.

0 S. 82° W.

26.50 ch. to A.

A N. 6 W.

5.82 ch. to B

.02

5.84

27.55 ch. to C. S. 5 W.

5.55 ch. to Begin.

Tract contains 15, 16 A.

For Hamilton Bros. Oct 14, '04.
N. E. cor. Corn. at Stake & iron post.

Center of road.

Along center of road.

Center of road.

Cedar post.

Stokes, Tr. Road. 209

Survey

30+60

S. 13 1/4 E.

Center of Road, 30+66 Survey
No. 1.

41+55

S. 29 E.

Wit. Telephone pole N. 6 1/2 W. 52.5'
" Telegraph " N. 45 1/4 W. 52.5'

42+69

S. 41 1/4

43+30.5

S. 55 E.

Wit. Telegraph pole N. 56 W. 49'
Telephone " N. 1 1/2 W. 45'

50+59.5

Sta. 50+89 of 1st Survey.

Plummer Shipley Survey.

Oct. 29, 1904.

C.M.R.

Found stone at S.W. \swarrow Mrs. Orion's lot (set by Buchanan)

Also found stake at S.E. \swarrow set by Buchanan.

Measured 45 feet from stake and set stake with tack for Shipley's S.W. \swarrow .

Took post for line between Bissel ^{and} Orion at Columbus St. Drove nail in post.

Measured 45 feet west for Shipley's west line. Set stake with tack.

On road cost line %
13%

39.87

13.80

26.07

28.00

20%

2 | 27.59 1/2

13.80

12.175 / 100.00 09 8.21

97.400

26000

24350

16500

12175

4325

~~32.80~~

48.7

229.88

162.72

1313.6

1599.308

14.52
 13.50

 14.11
 41

 14.52
 13.50

 57.807

Beg John Johnson westward < -
 with his line N 23 E 32 poles to stone
 N 60 W 91 poles stone in Co. road -
 with road S 26 W 37 poles to B William &
 with his line S 47 E 99. to begin

3

4/91

 2270

Bridge near A. C. McClum

March 18 - 1934

Bridge 18' roadway

" 11' clear span

" 13' extreme length

Abutment A. Abut.

abats 22' with 10' wing 45°

about 16' high -

face - and build crosswall

W.L. to Stone & 4 D.S. T.1.R.8

And Secs. 32 & 33 - T.2. R. 8

Pleasant Sp.

R. Oak 26" 15 1/4 ft 64 3/4 ft

Street Records.

On Plum Valley St -
Chillicothe to Auburn 518'

Lots from Chillicothe South

66-52-52-52-ally¹⁰ 50-55-50-50-21

222 -

226

226

518

445

508

30

10

30

508

Mason's land along Auburn
St. 21' wide -