

TABLE for reducing PERCHES to FEET.

Per	Feet	Per	Feet	Per	Feet	Per	Feet	Per	Feet
1	16.5	21	3,46.5	41	6,76.5	61	10,06.5	81	13,36.5
2	33.0	22	3,63.0	42	6,93.0	62	10,23.0	82	13,53.0
3	49.5	23	3,79.5	43	7,09.5	63	10,39.5	83	13,69.5
4	66.0	24	3,96.0	44	7,26.0	64	10,56.0	84	13,86.0
5	82.5	25	4,12.5	45	7,42.5	65	10,72.5	85	14,02.5
6	99.0	26	4,29.0	46	7,59.0	66	10,89.0	86	14,19.0
7	115.5	27	4,45.5	47	7,75.5	67	11,05.5	87	14,35.5
8	132.0	28	4,62.0	48	7,92.0	68	11,22.0	88	14,52.0
9	148.5	29	4,78.5	49	8,08.5	69	11,38.5	89	14,68.5
10	165.0	30	4,95.0	50	8,25.0	70	11,55.0	90	14,85.0
11	181.5	31	5,11.5	51	8,41.5	71	11,71.5	91	15,01.5
12	198.0	32	5,28.0	52	8,58.0	72	11,88.0	92	15,18.0
13	214.5	33	5,44.5	53	8,74.5	73	12,04.5	93	15,34.5
14	231.0	34	5,61.0	54	8,91.0	74	12,21.0	94	15,51.0
15	247.5	35	5,77.5	55	9,07.5	75	12,37.5	95	15,67.5
16	264.0	36	5,94.0	56	9,24.0	76	12,54.0	96	15,84.0
17	280.5	37	6,10.5	57	9,40.5	77	12,70.5	97	16,00.5
18	297.0	38	6,27.0	58	9,57.0	78	12,87.0	98	16,17.0
19	313.5	39	6,43.5	59	9,73.5	79	13,03.5	99	16,33.5
20	330.0	40	6,60.0	60	9,90.0	80	13,20.0	100	16,50.0

Entered according to Act of Congress, in the year 1866, by James W. Queen & Co.,
in the Clerk's Office of the District Court of the United States, for the Eastern
District of Pennsylvania.

TABLE of Decimal Parts of a FOOT for
each Inch and Sixteenth of an Inch.

In	0	1	2	3	4	5	6	7	8	9	10	11
0	000	083	167	250	333	417	500	583	667	750	833	917
	005	089	172	255	339	422	505	589	672	755	839	922
1	010	094	177	260	344	427	510	594	677	760	844	927
	016	099	182	266	349	432	516	599	682	766	849	932
2	021	104	187	271	354	437	521	604	687	771	854	937
	026	109	193	276	359	443	526	609	693	776	859	943
3	031	115	198	281	365	448	531	615	698	781	865	948
	036	120	203	286	370	453	536	620	703	786	870	953
4	042	125	208	292	375	458	542	625	708	792	875	958
	047	130	214	297	380	464	547	630	714	797	880	964
5	052	135	219	302	385	469	552	635	719	802	885	969
	057	141	224	307	391	474	557	641	724	807	891	974
6	062	146	229	312	396	479	562	646	729	812	896	979
	068	151	234	318	401	484	568	651	734	818	901	984
7	073	156	240	323	406	490	573	656	740	823	906	990
	078	161	245	328	411	495	578	661	745	828	911	995

Entered according to Act of Congress, in the year 1866, by James W. Queen & Co.,
in the Clerk's Office of the District Court of the United States, for the Eastern
District of Pennsylvania.

City Eng. record.
W. Liberty St. levels.
A. H. Windham.
School Lot. Richland T.P.
Semetary Survey Belle Center
Lake View St.
Mattoy
Hammer Road.
Benton Levels.
Sharp Survey.
Wade " Monroe T.P.
Mat Hoogler

City Eng. Records.

Chillicothe and Evansville -
Stake center -

Top screw of hyd. sloping meas. N.E. 37.45'
S.E. \angle central sidewalk N.W. 33.82'
Iron pin 7" - East side Evans. 17° below ground 30'

Chillicothe and Everett - Iron pin -

Chillicothe and Caroline - Iron pin -
Old apple tree 26" N.E. 41.7
N.E. \angle 1 story frame house south 46.8'

Chillicothe and Plum Valley - Iron bar -

Hyd. S.E. 34' 1"
Elec. Light pole SW. 27' 7"

Plat Dist. Seymour to Evansville
200'

Howit Seymour St.

Auburn and Evansville - Iron bar

Top screw hyd. N.E. 28.75'
Elec. Light pole N.W. 25.1'
SW \angle stone foundation main part house N.E.
66' 7"

Auburn and Plum Valley - Iron bar

SW \angle Rantam house 38'
NW \angle " " 33' 8"

Auburn and Seymour (South)

Iron bar

Apple tree 20" S 6° E 53.5'
S.E. \angle stone foundation house ^{N 46 1/2° W} 62.9'
N.E. \angle " " " 57 1/4 - 121.45'

Note - On Auburn Ave. + Seymour St. to +
Seymour S. = 69'

Measured dist on Seymour
Chil - E. to Auburn. 516.5'

West Liberty.

The Stone at said St.

Point St.

Beginning at the center of the W. end of the bridge over the mill race where the corner corner said Street, and 2.61 ft. above the Stone on the E. line of said Corporation, thence N. 32° west falling 2.31 ft. for 100 to the center of Market Street and 42 of a foot above the Stone at said Street.

N. Side Sidewalk.

From a point in the center line of said Street 50 ft. E. of the E. end of the iron bridge across the mill race, on said center line, as the initial point; thence on every E. by Stations of 100 ft. each.

At Sta. 0 3 ft.; at Sta. 1,

West Liberty.

4.33 ft.; thence by regular fall of .33 to 100 to Sta. 5, elevation at Sta. 5, 5.65 ft.; thence from Sta. 5 E. by a regular fall of .10 to 100 to Sta. 11, where the elevation shall be 6.25 ft.

S. Side Sidewalk.

Sta. 0, 3 ft.; Sta. 1, 4.65 ft.; thence by regular fall of .25 to 100 to Sta. 5, where the elevation shall be 5.65 ft.; thence from Sta. 5 E. by regular fall of .10 to 100 to Sta. 11, where the elevation shall be 6.25 ft.

The grade of each of the above Sidewalks shall rise by plane from said Sta. 0 to the top of the pier of said iron bridge, the above elevation being and as near

West Liberty

were found a datum line
 four above and the elevation
 of the cap stone at the
 N. side of the iron setting
 of the head rail at the N. E.
 corner of the approach from
 bridge, 1,62 ft. from and
 below the same said datum
 line.

Grade Stones.

Grade Stone 21 ft. S.
 of the center of Street 60 ft.
 wide running E. & W., and
 21 ft. W. of Street 60 ft.
 wide running N. & S., and
 25 ft. from center of all Sts.
 70 ft. wide, excepting only
 Lecturer St., where they are
 25 ft. W. of the center, and
 excepting Runkle St., where
 they are set 21' W. of center;
 only at crossing of Taylor
 and Runkle Sts. where it
 is 21 ft. S. of the center of

West Liberty

Runkle St., and 21 ft. S.
 of center of Taylor St.; and
 excepting at intersection of
 Taylor St. with Lumber
 road where the stone is in
 the center of the crossing
 of said St. and road;
 and excepting at the crossing
 of White and Columbus Sts.
 where the stone is 21 1/2 ft.
 N. of Columbus St., and 21
 ft. E. of White St.

Heat Liberty

Detroit St. center of st. South to center of Runkle St.

B.M.	3.64		40.00	
0+00	3.20	.44	40.44	
1+32	4.0	.80	39.64	
2+31	4.68	.68	38.96	
2+64	4.16	4.64	.02	38.98
B.M.	4.34	.18	38.80	
3+96	4.64	.30	38.50	
5+28	3.06	5.86	1.22	37.28

	3.80	.74	36.54	
B.M.	3.70	.10	36.64	
6+60	4.0	.30	36.34	
7+92	5.66	1.66	34.68	
8+25	3.66	6.42	.76	33.92

	4.20	.54	33.38
B.M.	3.76	.44	33.82
10+57	4.39	.63	33.19

0+00 to 3+96 fall 50' per 132'
 12' below stone (44 above)

Center of Newell St.
 52' above stone. (16 above)

3+96 to 6+10.5 fall 100' per 132'

Center of Columbus St.
 15' above stone (10 below)

Center Baird St. 42' above stone
 S.W. Cor. sidewalk at int. Detroit
 and Baird.

11+89	5.08	.69	32.40
13+21	5.16	.08	32.32
	5.18	.02	32.30

11+73 total 52.5 full 15' per side

Center Runkle St. Level with stone

Grade called for
Baird St. Center Detroit

0+00	4.20	33.38
1+32		35.69
2+64		38.00
3+63		39.73

West Liberty.
by City ordinance.

St. E. on center Baird.

Center Detroit St. 42' above stone

Rise from 0 to 3+63 231' per
132'

Center W. side bridge 2.61' above
stone.

West Liberty

East side Detroit St. E. on

0+00	4.17		33.41	33.6	
B.M.	3.76	AI	33.82		
B.M.	4.01		.25	33.57	
	4.04		.03	33.54	
1+00	6.19	3.98	.06	33.60	34.1
2+00	4.32	1.87	1.00	35.47	36.3
3+00	1.20	3.12		38.59	38.5
B.M.	.05	1.15		39.74	
		<u>6.61</u>	.28	6.33	
		.28			
		<u>6.33</u>			

Baird St. 15' N. of S. side of Baird.

E. side Detroit St. 15' N. of S. side

Blair St.

Top of sidewalk at N.W. cor. bldg.

Outer edge sidewalk 10' N.

Floor of bridge at S.W. cor.

1569

INDEXED ON MAP

A. H. Woodman.

June 17, 1904.

to	A		16' N. S. 82 3/4 W. ✓
46.65 ch	B	46.65	
to			10 hrs. W. S. 7 E. ✓
9.83	C	-24 9.59	
to			16' N. S. 82 3/4 W. ✓
52.23	D	+10 52.33	
to			Con. line N. 51 W. ✓
4.0	E		
to			N. 7 W. ✓
38.65	F		
to			N. 87 1/2 E. ✓
6.48	G		
to			N. 78 1/2 E. ✓
6.47	H		
to	I		N. 76 1/2 E. ✓
5.26 1/2			
to	J		N. 68 1/2 E. ✓
4.66 1/2			
to			N. 78 1/2 E. ✓
7.64	K		
to			N. 7 W.
3.30			
9.05			

Center Road S.E. Cor. tract. Lima Pike.

Center Road

" " S. side tract.

N.W. Cor.

Stone

"

N 7 1/2 W

92 W

188
96 1/2

Stone.

S. bank River.

Stone

11.45 1/2 L

to

S. 76 E. ✓

Cor.

16.89 M

to

S. 1 E. ✓

Stone

6.90 N

to

N. 89 1/2 E. ✓

Stone

9.90 O

to

N. 30 1/2 E. ✓

Big Ash tree. Skillman. Chas + Wind.

11.58 P

to

S. 50 E. ✓

Stone

6.30

to

N. 79 E. ✓

Stone

8.77 R

to

N. 30 1/2 E. ✓

Stone

4.78

to

N. 7 W. ✓

Stone

4.78 T

to

N. 81 1/2 E. ✓

Cherry Creek

7.0 U

to

N. 37 E. ✓

14.27 V

to

N. 84 1/2 E. ✓

Center Road.

3.30 W

to
45.92 A

S. 7 E. ✓

Cotton Road place of Beginning.

1570

INDEXED ON MAP
Survey

School Lot

One acre out of J.M. Bennett
Orchard.

SE \angle + of Huntsville and
Roundhead pike with Archer
pike.

Found N. line Bennett
by measuring 14' north from stone
described in deed from
Bennett to J.K. Elder - said
to be 14' south of line by Elder
and run \angle to stone \angle to
Elder and Bennett in the
Rebucke line.

N 82 $\frac{1}{2}$ ° E at 350 set bar in pike -
set iron bar in Elders east line
and Bennett's N. line - in
center pikes

Huntsville road

Archer road

63° 27'

Junction - 117 - 273

Richland Tl. - July 6 - 1904

Bearing of Huntsville and
Roundhead pike

S 30° E

at 450 set iron bar in pike

Bearing south line N 62 $\frac{1}{2}$ ° E
1.34



Bearing of east line

$56\frac{3}{4}^{\circ}$ E

396 to corner post -
with application 10" N 12" E 30' etc.

Archway road

90' 4"

East line

Cemetery Survey Belle Centre -

On south side length of
line Hedge fence 1250
A802

$$\begin{array}{r} 1250 \quad | \quad 2000 \quad | \quad 1160 \\ \hline 1250 \\ \hline 7500 \\ 7500 \end{array}$$
$$\begin{array}{r} 500000 \\ \hline 500 \\ \hline 100 \end{array}$$

East line of lot surveyed
S 71° E 164 to stake

South line S 83° W 1250
to iron gas pipe in said
public road.

Line "B"
on road west side -
S 71° E 160
2 1/2 in bar 1/2 gas pipe

0
+80
-

6759.7

Iron bar N. Side Mine
5 " "

Iron Bar center Cope.

LAKE VIEW STREETS.

N. MAIN ST. E. ⁹/₄ W. sidewalk

B.M.			
		<u>49.78</u>	
⌘	4.56	<u>54.34</u>	
0	4.14		50.20
0+4	4.56		
0	4.14		50.20
1	4.06		50.28
2	3.98		50.36
3 E.	5.47	48.87	50.44 Fill 1.57
3 W.	3.90		50.44
4	3.82		50.52 ch.
5	3.68		50.66
6	3.54		50.80
7	3.40		50.94
8	3.26		51.08
9	3.12		51.22
⌘	5.04	<u>56.26</u>	
10	4.90		51.36 ch.
11	4.78		51.48 ch.
12	4.76		51.50
13	4.74		51.52
14	4.72		51.54
15	4.70		51.56
0 Street	4.60		

50.20

Grade

B.M. s.w. ↙ street intersection

Sta. 0. N. side ^{E.} Lake St.

0+4 W. side N. Main St. iron pin.

0 E. " " " "

3 E. side

LAKE VIEW

N. MAIN Street. E. by W. side - walk grade

	X	56.26	
16	4.68		51.58
17	4.66		51.60
o Street	4.70		
18	4.64		51.62
19	4.62		51.64
20	4.60		51.66
21	4.58		51.68
22	4.56		51.70
+23	4.55		51.71

Levels at S.W. L of Square

B.M.		49.78	
	X	4.05	53.83
Fry's Door sill	3.10		50.73
B.M.		49.78	
	X	39.3	53.71
Bot. Fry's Siding	3.43		50.28
	3.39		50.32
			50.74

LAKE VIEW Streets.

S. Main St. W. sidewalk

7/20, 1904 C.M.R.

13	52.40	
14	3.62	56.02
11	3.72	52.30 52.30
10	3.77	52.25
12	3.67	52.35
14	3.57	52.45
15	3.43	52.59
16	3.29	52.73
17	3.15	52.87
18	2.56	at rail 53.46
19	2.72	<u>53.30</u>
20	3.10	56.40
20	3.12	53.28
21	3.08	53.32
23	3.00	53.40
24	2.96	53.44
25	2.92	53.48
26	2.88	

26 At Corporation line.

MATTOX SURVEY.

A. W. Rousch } ch. cr.
Cliff. Warren }

Mattox & Rodgers

Mattox Survey. $\frac{7}{2}$ = 1904

Found stone N.W. \leftarrow 7 acres
in \odot road.

Off set 10' South

Line A

S. $89\frac{3}{4}$ E Random.

at 17.93 ch. W. side of T+O.C.

at 18.94 ch E. " " "

36.32 ch. set stake

Passed tree at 35.98

Came out 6" S. of corner.

Total Northing 9' 6"

set hickory stake 33 links

E. of 12" black Walnut

Set stake at 18 ch. N. 4' 9"

" " " 10 ch N 6' 10"

Corrected bearing S. $89\frac{1}{2}$ E.

Line B.

with \odot road. N. $25\frac{1}{2}$ E.

11.01 ch.

Set hickory stake in road

Wit: 4" Apple tree N. $59\frac{3}{4}$ W. 45 lbs.

12" W. Oak S. $53\frac{3}{4}$ E. 90 lbs

Washington Trip = $\frac{10}{32} = \frac{5}{16}$ 2.81
114 $\frac{16}{125}$ 2.88
114 $\frac{8}{10}$ 9.36
114 $\frac{16}{10}$.62

Bearing of R.R. by calculation

N. $16\frac{1}{2}$ W Distance 10.44 ch

10.44 ch across tract

Line C.

On North S. $89\frac{1}{2}$ E.

10.34 $\frac{1}{2}$ ch W. side Ry.

32.57 ch set stake. Correct this

distance to 32.41 (Bad chaining here)

Line D.

From S.E. \leftarrow along river

N. $20\frac{1}{2}$ E. 3.47 ch. set stake

Line E.

N. $\frac{3}{4}$ E 3.36 ch. set stake

Line F.

N. $7\frac{1}{4}$ W. 2.55 ch set stake

Line G.

N. 10 W.

(63) .85 links. Set \leftarrow stake

Wit: 12" Hackberry S $7\frac{3}{4}$ W 16 links

. 10" Walnut S. $6\frac{1}{2}$ W 40 lbs.

Road 33 Pleasant
Hamm Road Survey.

Aug 15 - 1904

Sta 0. at 282 Water Works
lot -

John C. Brown /
O. P. Stokes / Viewers
W. L. Bruce

585 1/2 ft
with south line Water Works
lot.

Donald Wenden ch cr -
William Strayer ax

at 335 1/2' line Shaffer on
south -

at 355 1/2' line Water Works
and Adriaens on north -

at 922' line Shaffer and
Van Meter on south -

at 1220' line Van Meter
and Hamm on south -

at 1854' stone in road line Hamm
and line Adriaens

St. stakes



With line Adgance and
Hamer N 6 1/2 E
at 2218 set stake -

$$\begin{array}{r} 2218 \\ 1864 \\ \hline 364 \end{array}$$

On line between two old
Taylor tracts
Across Hamer
S 86 1/2 E
at 4416 1/2' end of road
in center of county road

$$\begin{array}{r} 4416 1/2 \\ 2218 \\ \hline 2198 1/2 \end{array}$$

Benton Levels.

A	5.82	107.06	grade stake.
Ins.		112.98	
A	6.42	106.46	gutter.
B	5.31	107.57	W.S. side W.
"	6.10	106.78	5' W.
"	5.83	107.05	gutter.
C	4.83	108.05	W.S. side W.
"	5.95	108.09	5' W.
Ins.	6.88	114.03	
"	6.53	107.35	gutter.
D	5.99	106.29	
"	5.06	107.97	5' W.
"	6.19	107.84	gutter.
E	5.16	108.87	
"	4.88	109.35	5' W.
"	5.29	107.50	gutter.
Ins.		111.29	
F	4.01	107.28	
G	4.84	105.49	
Ins.		110.23	
G	4.95	105.38	E. S. side W.
"	4.73	106.00	5' E
"	5.10	105.28	gutter.
H	4.93	105.40	E. S. side W.
"	4.10	106.23	5' E.
"	5.15	105.18	gutter.

Sept. 29, 1904.



Ins.		<u>110.33</u>	
I.	4.22	106.11	
J	5.37	104.96	gutter.
K	5.72	104.61	"
L	5.65	104.57	"
43.59	4.60	105.73	grade stake
Ins.		<u>109.32</u>	
L	5.06	103.30	top tile
M.	4.49	104.88	At fence
"	5.40	103.92	N.S. filling
"	5.18	104.14	S.S. "
"	3.98	105.54	grade stake
"	5.58	103.94	top tile
"	4.27	105.05	top filling
N	4.22	105.10	
"	3.99	105.33	grade stake
"	4.82	104.50	N.S. filling
"	4.50	104.82	S.S. filling
"	3.68	105.64	top "
"	5.40	103.92	" tile.
P	4.63	104.69	At fence
"	3.76	105.56	grade stake
"	4.74	104.58	gutter.
A	2.26	107.06	grade stake.

Sharp Survey.

Iron Pin	N.	33	W.	10 ch	0 lbs	S
	N.	51	E.	2 "	50 "	
	N.	44	E.	3 "	37 1/2 "	Stake
	N.	30 1/2	E.	6 "	48 1/2 "	Stake
	N.	83 3/4	E.	4 "	0 "	
	N.	67 3/4	E.	1 "	69 "	
	S.	81 3/4	E.	2 "	0 "	
	S.	79	E.	0 "	29 "	
	N.	84 1/2	E.	4 "	20 "	Stone
	S.	41	E.	4 "	54 "	Stone
	S.	22	W.	9 "	75 "	Iron Pin
	S.	63 1/2	W.	14 "	75 "	

Iron Pin.	N.	33	W.	7 ch	75 lbs	Stone
	N.	51	E.	2 "	50 "	7 lbs.
	N.	33	W.	2 "	25 "	Stake
	N.	44	E.	1 "	69 1/2 "	
	N.	77 3/4	E.	15 "	67 1/2 "	
	S.	38	E.	3 "	65 "	Stone
	S.	22	W.	5 "	50 "	
	S.	63 1/2	W.	14 "	75 "	Iron Pin

Aug. 31, 1904.

S. line fence on W. line of survey
 Dec. 4, 1899, 37 1/2 lbs. S. of Hickory
 Tree 5 lbs. W. of Sand bar. (Hickory
 Tree 18" diameter).

W. Bank old mill pond.

C. T. & O. City, 2 ch. 94 1/2 lbs.

C. road.

C. T. & O. City, 4 ch.

Along center of fence.

To beginning

Jan. 17, 1905.

S. line right of way T. & O. C. Ry.

With S. line right of way.

Center East L. & Mid. pike.

" " " " " "

9.52 Acres.

Iron Pin	N	32	W	7ch	70lbs.	Stone	
	N	51	E	2"	50 "	Wet	Tree

Sharp Survey.

Jan. 21, 1905.

A				
Harrow tooth.		N. 15 3/4 E.		Harrow tooth.
B	273 ft	81° 50' B.		"
C	64 "	{ 12° 20' L. 130° 20' B.		"
D	173.5 "	8° 50' L. (Along 12° 20' L.)		"
E	76.3 "	61° B.		"
F	56.5 "	74° 19' B.		"
G	115.3 "	38° 41' B.		"
H	75.3 "	113° L.		"
I	38 "	91° 48' B.		"
J	48.5 "	90° 41' B.		"
C	211.9 "			"
J		90° 41' L.		"
K	58.2 "	21° 12' B.		"
A	208.5 "	118° B. to B.		"

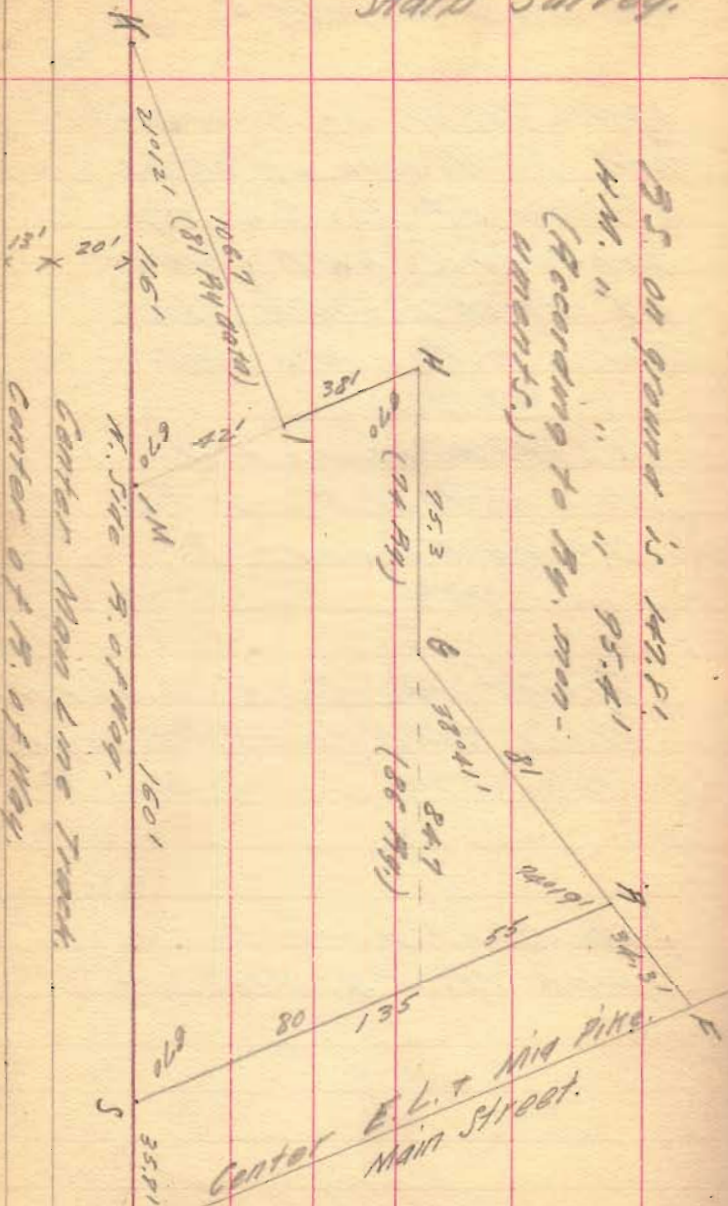
520.3 ft. W. of intersec-
tion of N. line of right
of Way of T. & O. C. Ry.
produced with center
of East L. & Mid. pike.
Center E. L. & Mid. pike.

" " " " " "
34.3 ft. W. on line F G
from F to N. E. cor Ry.
Station Grounds.

Tract ABCJK 0.868 A.
Tract CDEFGHI 0.634 A.

See next page for
plot of Ry Grounds.

Shard Survey.



Ry. has taken center of Main Line track as center of R. of Way, making error on line B.S. 14 ft.

Wade Survey.

Wm. Jordan } ch. Cr.
Ben Moots }

R. N. Jordan

W. L.

Wade Survey, Monroe

Line A

Found Harrow tooth in \odot of
Pine and in S. Line of Survey

N. 60 E 20.57 ch to
iron Harrow tooth at S. E. \odot

of 77 acre tract corner of
Jordan, Randall, Kauffman

Wit: 18" W. Oak S. 19 $\frac{1}{4}$ E 39 lbs

12" W. Oak S. 75 $\frac{1}{2}$ E 55 lbs

LINE B ON East side.

21.61 ch. N. 15 $\frac{3}{4}$ W

to stone at W. side of old Will
Cherry.

32
Tp. 5 Feb. 28, 05.

Line C on N. side of tract

offset 10' to North

Set Stake at 10 ch

N. 51 $\frac{1}{4}$ E

25.25 ch. S. 80 $\frac{3}{4}$ W

To ~~stone~~ 4' W of \odot of gravel

near W. of stone

Line D with road

13 ch S. 1 W.

Set Stake

Wit: Large Burr Oak N. 13 W. 14 lbs

24" Burr Oak S. 63 E. 43 lbs

Line E. with road

4.29 ch S. 2 E.

Set rounded boulder in \odot gravel

Location of corner pointed out by

Forsythe

21.61	23.33
25.06	9.37
2 46.67	163375
28.335	69.995
	20997

LINE F. with s. side rail fence
with N. side 20 Acres

18.46 ch. N. 81 E

calls for 16.63 ch

Set stake at 18.46
Location of corner pointed out by
Foreythe

Line G

with E. side 20 Acres

S 2 1/2 E

9.27 ch to Stake in O of pipe

6.50 ch E. of Harrow tooth at
beginning of line A.

Line H with pipe

14.08 1/2 ch N. 60 E.

See next page 21.860275
21.86 Acres.

Line I

Dividing 34 acres from 21.86

Set stake 9.47 ch from
S. E. \swarrow in O pipe. wit: 12" Hickory
47 lks. N.W.

N. 15 3/4 W.

to W. side of tract.

Random Line Came out
at 9.45 ch from N.E. \swarrow

Set Stake at 9.43 ch from
Wild Cherry Corner
on this random line Set
Stakes every 5 ch.

Corrections:

- 1st stake from pipe: 3" E.
- 2nd " " " : 6" E.
- 3rd " " " : 9" E.
- 4th " " " : 12" E.
- 5th " " " : 16" E.

See next page

23.57

Line I

Dividing 34 Acres from 23.58 Acres

Wade in possession of 1.72 Acres

^{move}
^ Then his deed calls for.

$$21.86 + 1.72 = 23.58$$

S. E. L of 34 Acres is 10.37 ch
from iron pin at end of line A.

N. E. L of 34 Acres is 10.11 ch
from stone ⁹/₄ Cherry tree at end
of line B.

Set iron pin at S. E. L 34 Acres

Wit: 16" Hickory N. 16 E. 53 1/2 lks

Random N. 15 3/4 W 25.29

Came out .17 links S. of L →

Corrections

5 ch 3 2/5 lks N.

15 ch 6 2/5 lks N.

15 ch 10 1/5 lks N.

20 ch 13 3/5 lks N.

25 ch 17 lks

10.3
18.11
9.43

.68

10.00

7.92 120.0 (15

792
4080

37 60

1 20

→ Set stake for L

Wit: 10" W. Oak S. 16 1/2 W 25 lks

15" W. Oak S. 7 2 E. 30 "

Mat. Koogler Survey

Mat. Koogler } ch. cr.
Chas. Emerine }

Mat Koogler Survey

Line A.

Found stone in X roads at
 N.W. \angle Section S. 55 $\frac{1}{2}$ ' E
 chained E. along road
 Set temporary stake at 20.05 ch.
 in line ~~to~~ Makemison's E. line fence
 came out at N.E. \angle of $\frac{1}{4}$ sec.
 40.01 ch. Found stone

Line B.

Along E. side Qr. Sec. Off-set 7' W.
 Random S 4 $\frac{1}{2}$ ' W 38.15 $\frac{1}{2}$ lks.
 Set temporary stake at 20. ch.
 Off set 14' E. 16.77 ch
 " " 4' W.
 Set temporary stake at 30 ch
 Off-Set 4' W.
 came out 19' 8" E. of \angle stone 30 lks
 19' 8" Total Easting 20' 8"
 7 " Corrections 6 $\frac{1}{2}$ " to ch.
 26' 8"
 6 " 20 ch stake move 3' 10" W
 20' 8" 16.77 ch " " 2' 1" W
 30 ch " " 17' 4" W.

19' 5" 47.01
 3/5, 05. C.M.R.

Line C

Along S. side
 19.64 $\frac{1}{2}$ ch to stone.

Line D

Along W. side Random
 Off-set 8' W = N. S. E
 Set stake at 10 ch. by 20 ch.
 off-set 21' E.
 Set stake 30 ch
 38.14 ch to stone in road
 Came out 43 $\frac{1}{2}$ lks E. of stone
 42 $\frac{1}{2}$ lks = 28.7 ft.
 Total Easting 28.7 + 8 = 36.7 - 21 = 15.7
 Corrections 10 ch + 13 ft. 3.87' E
 " " 8.26 ft 12' W.
 38 $\frac{1}{2}$ lks " 30 " 12.39 ft 25.39' W
 " " 38 " 15.69 28.69' W
 " " 19.07 " 7.88 1 $\frac{1}{2}$ ' E.

Line E

Between

Miller and

Koogler

Set stone on $\frac{1}{2}$ brick for \leftarrow at W line

19.07 ch from S.W. \leftarrow

With 8" Elm N. 16 E. 46 lbs

16" White Oak S. 68 $\frac{1}{4}$ W 32 lbs

Random S. 85 $\frac{1}{2}$ E. ass. at 5' S.

Set stake at 10 ch

Set stone on $\frac{1}{2}$ brick for \leftarrow at E line

19.08 ch from S.E. \leftarrow

19.79 ch

Came out 1' 8" S. 2

Total Northing 3' 4"

Set 10 ch stake 3' 4" N.

19.64

19.96

39.60

19.80

38.15

19.8

30520

34335

3815

755370

24.73

120

6.53

38

5224

1959

12) 275.14

20' 8"

6

26' 8"

20' 8"

19.96

19.64

2 39.60

19.80

120

40

20

40

248"

16' 9"

19.075

19.8

152600

171675

19075

3776850

19.79

19.65

39.44

19.72

19.075

19.72

38150

133525

171675

19075

37615900 Acres

19.79

19.96

39.75

19.875

19075

99375

139125

178875

19875

379115625