

John J. Miller sur.
 John J. Miller } ch. or
 John Schulz }

Wanted to measure the plowed ground
 around the place at at corner
 of plowed ground near the
 house ran to corner of garden.

Line A, from corner of plowed
 ground S 79 E. 464 poles to corner
 of garden

Line B, from corner of garden to corner
 of field S 95 E wire fence 2 feet from
 instrument 428

Line C, from S. E. corner garden S 19 W 48
 Commenced to rain. 22.72 1-1-18
 To S. E. corner plowed ground

Line D, along S. side plowed ground to
 S. W. corner S. 88 poles N. 77 W.

Line E, from S. W. corner of plowed ground
 to N. W. corner of plowed ground N. 3 E.
 24 poles.

Line G, from corner near the dam to
 beginning S 88 E. 752

Square piece 6 poles on one side
 7.26 on 2d side 11.44 on 3d side, 4.92 on 4th

Entire amount 305.97 sq. poles.

Cartwells Right of Way is 40 ft
 Miller reserves a wagon road of 14 ft. on
 South side.

Across the end of the meadow is 10 poles
 Angle at corner N. W. of meadow 120°
 Worked out by algebra OK
 24.45 poles on south side

Plummer Survey

Tom Rolt } ch. cr.
 James Stader }

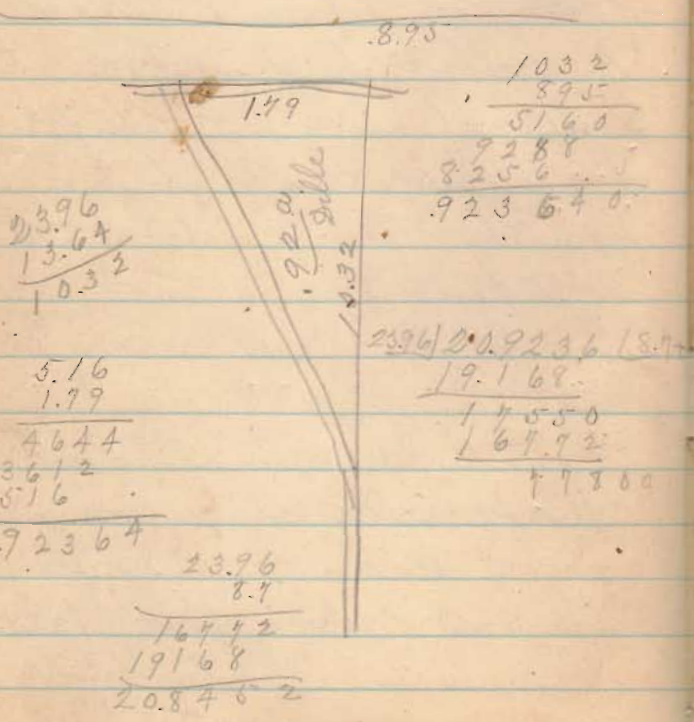
Found tracing from corner of
 Crane house was wrong.

Measured depth of lot 210 ft
 Found dist. 719 1/4 ft. came to N. side
 of alley, found from same the other
 lines that he came from the
 S. side of alley set off from
 this corner the angle $72 1/2^\circ$
 from the alley. Variation 29 1/2
 Set stake at 3 poles

Line A ran by corner angle 39°
 dist 12 1/4.

Line B. ran with street setting
 off 15 ft west of stake and 50'
 east of west side of street found
 was west of stake about 6 feet.
 Measured from Brown corner
 270 feet to corner of lot 16

Line D ran from corner S.E. to lot. dist 16 poles makes dist across street 59' divided dist for 86' set stakes 13'8" from barn and 13'8" from fence post. Fencing was no good along the street.



Kelly-Heddings Reserve.
Jonathan S. Matur } affirm
G. J. Troyer }

April 18 - 1889

Line A. Start at stone, east side pipe SE < Kelly 20 a. Run with Kelly line or 5 1/4 E. Stone 23 sticks E. of end pipe at 13.64 ch pass S. < 9. N Dille 3 cor piece " 33.965 ch stone corner and NE < Dille 3 cor piece

Line B. Start at stone or < line SE to W at 1.79 ch NW < Dille 3 < piece " 2.14 center Bull. E/W stick pipe " 8.712 stone wonder NW < Heddings " 8.73 Ok < NW < Kelly. "

Leine C.

Start at Ston SW Kelly
with Kelly line

15869r

8.71 pass 5 links S of \angle Ston. Warden

8.73 out ∇ @ K SW \angle Hedding-Kelly