

M 572A-12

## Grades for Sidewalks on Center and Charles St in Belle Center

B.M. Top stake in cement hitching post (22' W)  
10' front of Mrs. Fultons Res. on Center St.  
Elev = 1047.381

|                                |          |      |          |                   |
|--------------------------------|----------|------|----------|-------------------|
| B.M.                           | 1        | 3.91 | 1047.381 |                   |
| ∑                              | 1051.291 |      |          |                   |
| Top.                           |          |      |          |                   |
| Cement Post B.M.               |          | 3.18 | 1048.111 | ←                 |
| T.P.                           |          | 4.49 |          |                   |
| ∑                              | 1052.601 |      |          |                   |
| Grade.                         |          | 4.85 | 1047.751 | N.W. ∟            |
| ∅ St                           |          | 4.17 | 1048.431 | Opp "             |
| T.P.                           |          | 5.23 | 1047.296 | S.E. "            |
| ∑                              | 1052.526 |      |          |                   |
| Outside Edge side walk E. side |          | 4.87 | 1047.656 |                   |
| ∅ St opp. "                    |          | 5.03 | 1047.496 |                   |
| Grade side walk West side      |          | 4.87 | 1047.656 | ∟ Elm St          |
| Sidewalk East side             |          | 4.52 | 1048.006 |                   |
| ∅ St                           |          | 4.80 | 1047.726 |                   |
| Grade West side + 57           |          | 4.52 | 1048.006 |                   |
| Sidewalk East side             |          | 4.25 | 1048.276 |                   |
| ∅ St.                          |          | 4.74 | 1047.786 |                   |
| Grade West side + 88           |          | 4.25 | 1048.276 |                   |
| East side walk                 |          | 3.91 | 1048.616 |                   |
| ∅ St                           |          | 4.37 | 1048.156 |                   |
| Grade west side + 139          |          | 3.91 | 1048.616 |                   |
| East side walk                 |          | 3.68 | 1049.846 |                   |
| ∅ St                           |          | 3.84 | 1048.656 |                   |
| Grade West side + 168          |          | 3.68 | 1048.846 |                   |
| Grade West side + 204          |          | 3.28 | 1049.246 | at ∟ Char-        |
| ∅ Charles ∟ Center St          |          | 2.88 | 1049.646 | les of Center St. |
| Top cement post B.M.           |          | 1.76 | 1050.766 | ←                 |
| East walk at # sts.            |          | 3.55 | 1048.976 |                   |
| T.P. on Cement Post 4.725      |          |      |          |                   |
| ∑                              | 1055.491 |      |          |                   |
| ∅ Charles St                   |          | 5.85 | 1049.641 | Opp. ∟            |
| ∅ " "                          |          | 3.28 | 1052.211 | " N.W.            |

(See sketch on page 69)

B.M. taken from E.N. Turners notes 1907.  
Elev. taken from Geographical survey.

Sidewalk stakes on Center St. 7' from  
property line, and 5' from prop.  
line on Charles St.

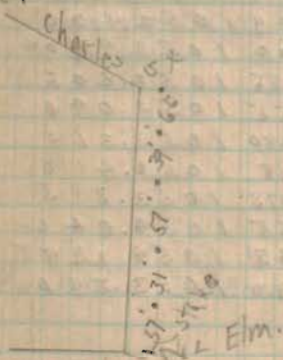


Post at N.W. ∟ Plum and Center St

School Street

Painter Lot on outside edge walk,

Sidewalks on S. side Center St are supposed  
to be laid to grade. Made grade on N. side  
same.



∟ Elm.

Post at E. side Center St. N of N.W. ∟ Painters house.

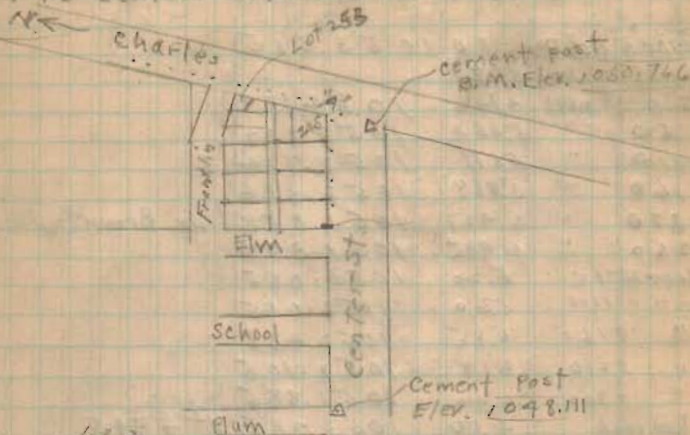
Lot 245  
← Lot 253.

| T                                          |      | 1055.491 |                                            |
|--------------------------------------------|------|----------|--------------------------------------------|
| Stake on grade                             | 6.00 | 1049.491 | S.E. 4 <sup>th</sup> St. 245 <sup>ft</sup> |
| Grade, S.E. 4 <sup>th</sup> Franklin St.   | 2.99 | 1052.500 |                                            |
| 1 <sup>st</sup> stake set "                | 3.38 | 1052.111 |                                            |
| 0 <sup>st</sup> opp. 1 <sup>st</sup> stake | 3.35 | 1052.141 |                                            |
| 2 <sup>nd</sup> stake Grade                | 3.77 | 1051.721 |                                            |
| 0 <sup>st</sup> opp. 2 <sup>nd</sup> stake | 3.60 | 1051.891 |                                            |
| 3 <sup>rd</sup> stake Grade                | 4.16 | 1051.331 |                                            |
| 0 <sup>st</sup> opp. 3 <sup>rd</sup> "     | 3.93 | 1051.561 |                                            |
| 4 <sup>th</sup> stake Grade                | 4.55 | 1050.941 |                                            |
| 0 <sup>st</sup> opp. 4 <sup>th</sup> stake | 4.60 | 1050.891 |                                            |
| 5 <sup>th</sup> stake Grade                | 4.94 | 1050.551 |                                            |
| 0 <sup>st</sup> opp. 5 <sup>th</sup> stake | 5.00 | 1050.491 |                                            |
| 6 <sup>th</sup> stake Grade                | 5.33 | 1050.161 |                                            |
| 0 <sup>st</sup> opp. 6 <sup>th</sup> stake | 5.40 | 1050.091 |                                            |
| 7 <sup>th</sup> stake Grade                | 5.62 | 1049.871 |                                            |
| 0 <sup>st</sup> opp. 7 <sup>th</sup> stake | 5.60 | 1049.891 |                                            |

T.P. Stake in Franklin St 5.09

| T                                                 |       | 1057.590 |  |
|---------------------------------------------------|-------|----------|--|
| Grade N. side Franklin                            | 5.09  | 1052.500 |  |
| 0 <sup>st</sup> opp. <del>stake</del>             | 3.60  | 1053.790 |  |
| 1 <sup>st</sup> stake N. of 4 <sup>th</sup> Grade | 4.685 | 1052.805 |  |
| 0 <sup>st</sup> opp. 1 <sup>st</sup> stake        | 4.55  | 1053.040 |  |
| 2 <sup>nd</sup> stake Grade                       | 4.280 | 1053.310 |  |
| 0 <sup>st</sup> opp. 2 <sup>nd</sup> stake        | 4.18  | 1053.410 |  |
| 3 <sup>rd</sup> stake Grade                       | 3.795 | 1053.815 |  |
| 0 <sup>st</sup> opp. 3 <sup>rd</sup> stake        | 3.55  | 1054.040 |  |
| 4 <sup>th</sup> stake Grade                       | 3.45  | 1054.139 |  |
| 0 <sup>st</sup> opp. 4 <sup>th</sup> stake        | 3.70  | 1053.890 |  |

Stakes set every 50' from Franklin St to Center St. Distance 382'.



Set stakes every 50' North along Jos. Browns. Stake 4 at 40 feet (100) N. of N.W. 4<sup>th</sup> Franklin St. opp. Jos. Browns Residence.

Opp. Iron Post & Jos. Browns yard.

Side Walk stakes Belle Center - 3 Stakes

Stake 0. at L Joe Browns yard 190' N. of N. side Franklin St.

Stakes 6' from prop. line and 6' from outside edge side walk. side walks 4.5' wide.

Stake 3 4.47 1053.815

T 1058.285

Sto 0 4.196 1054.139

+ 60 " 5.153 1053.232

+ 110 " 5.511 1052.774

+ 160 " 5.969 1052.316

+ 210 " 6.427 1051.858

+ 260 " 6.985 1051.300

Opp. opp. st 360 5.20 1053.085

" 410 5.60 1052.685

" 460 5.85 1052.438

" 510 6.17 1052.108

" 560 6.40 1051.885

@ Rail road 4.50 1053.785 at + 443

Opp. Brittan gate 7.05 1051.235 at + 233

Line Brown and Brittan at + 187

Dwight Miller } Ch.  
Harold Seltzer }

Elev

See map page

88' - 89' - 91' - 92'

Stake

School

72  
Side Walk Stakes West side Center St

Between Elm and School Sts 7 1/2 in

|                               |          |                    |
|-------------------------------|----------|--------------------|
| N.E. L Elm 4.156              | 1047.656 |                    |
| T 7.66.811                    |          |                    |
| S. Walk E. side of st. 0      | 4.40     | 1047.411 S. L Elm. |
| OST                           | 4.26     |                    |
| S. Walk W. side of st 0 + 988 | 4.40     | 1047.411           |
| S. " E " "                    | 4.41     |                    |
| OST                           | 4.16     |                    |
| S. Walk W. side of st 1588    | 4.41     | 1047.407           |
| S. " E " "                    | 4.29     |                    |
| OST                           | 4.20     |                    |
| S. Walk W. side of st 2288    | 4.29     | 1047.521           |
| S. " E " "                    | 4.20     |                    |
| OST                           | 3.55     |                    |
| S. Walk W. " 7317.2           | 4.20     | 1047.611           |
| N. L School St                | 4.06     | 1047.751           |

Side walks on East side are constructed  
to grade. Made grade on West side  
same.