

Gilbert Survey

Rushsylvania, Ohio

O.V.M.S No 13476

June 8, 1950

1

3391

INDEXED ON MAP

60' Iron pipe placed.
230.4'

Stone found

361.5

N 110° W

Gilbertland
to be sold to
Joe Thomas
50 Acres

361.5

Waldo Gilbert
et al

445.437
boundary of Gilbert
two properties

Waldo Gilbert
et al

445.437

Hub found

60'

Joe Thomas

17 Acre

120'

Hub found

N 80° E
511.5'

224.235?

544.6

M.H. St

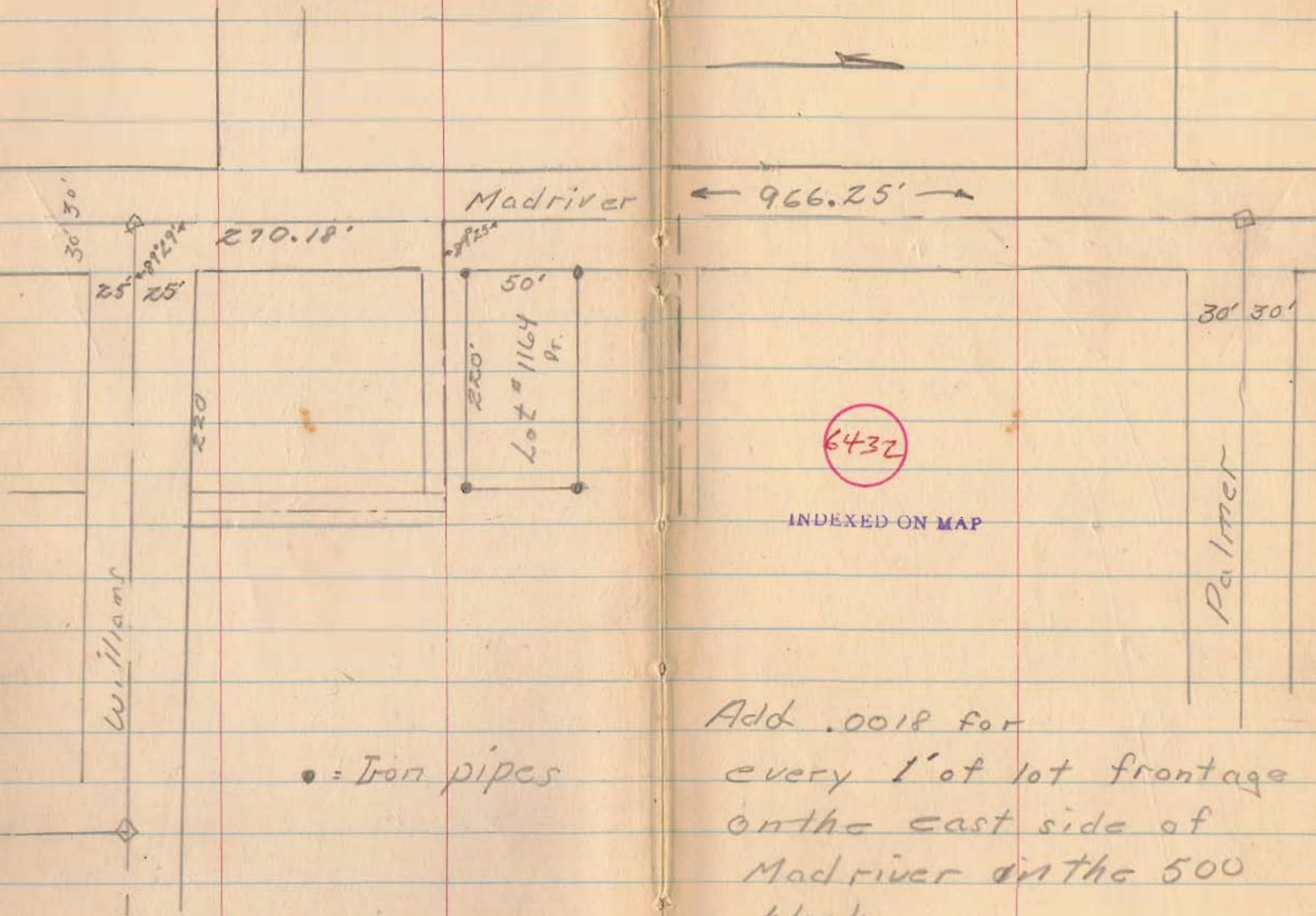
Monuments
Sta. 8700

Monument
at Survey Corner
S.W. corner

Littlejohn Survey

July 6, 50

2



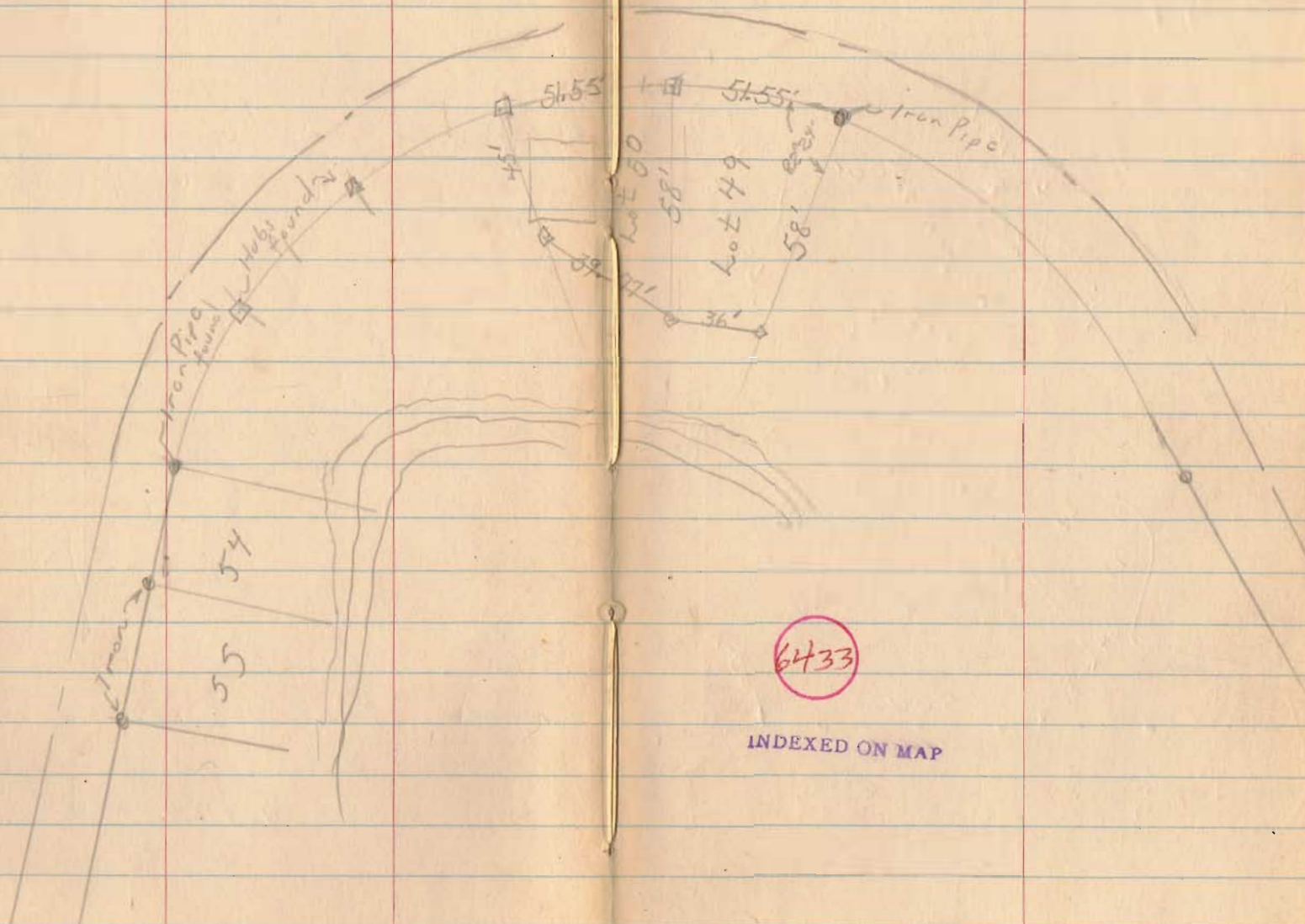
• = Iron pipes

Add .0018 for every 1' of lot frontage on the east side of Madriver in the 500 block

Long Island

July 1, 50

3



6433

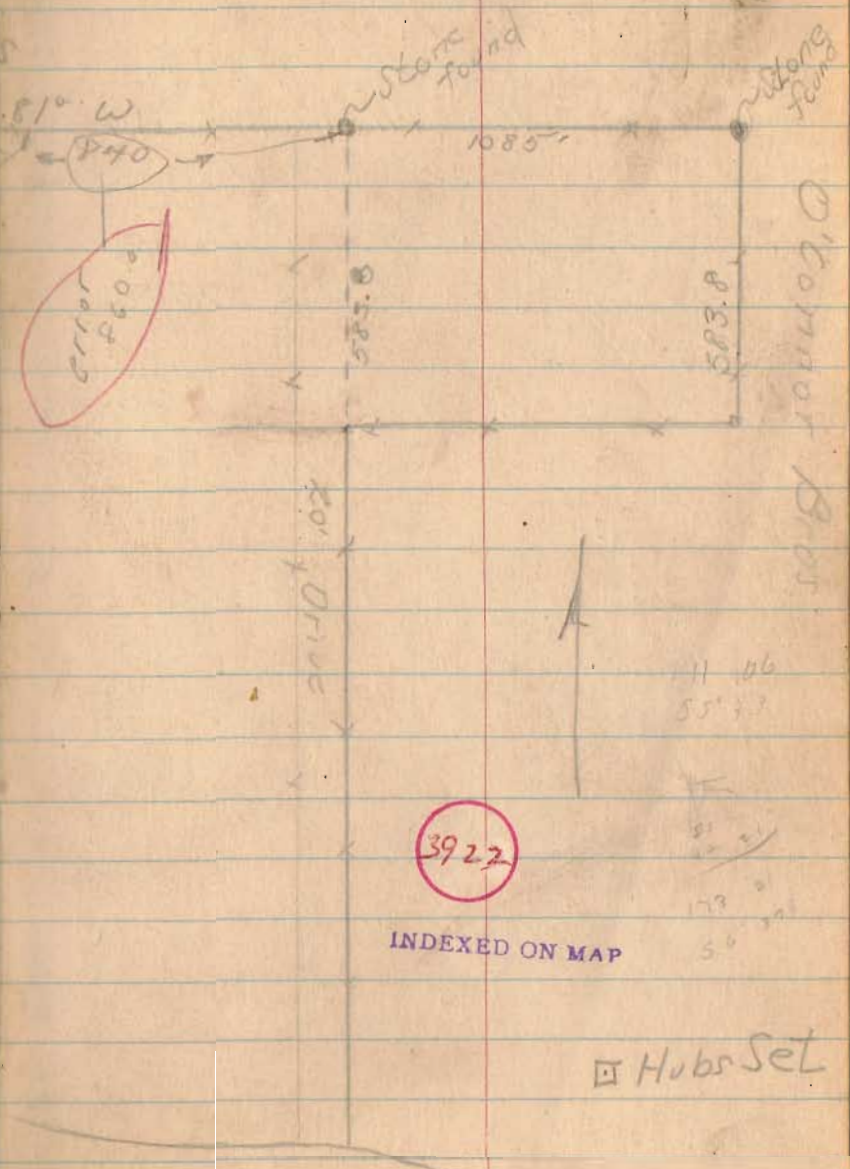
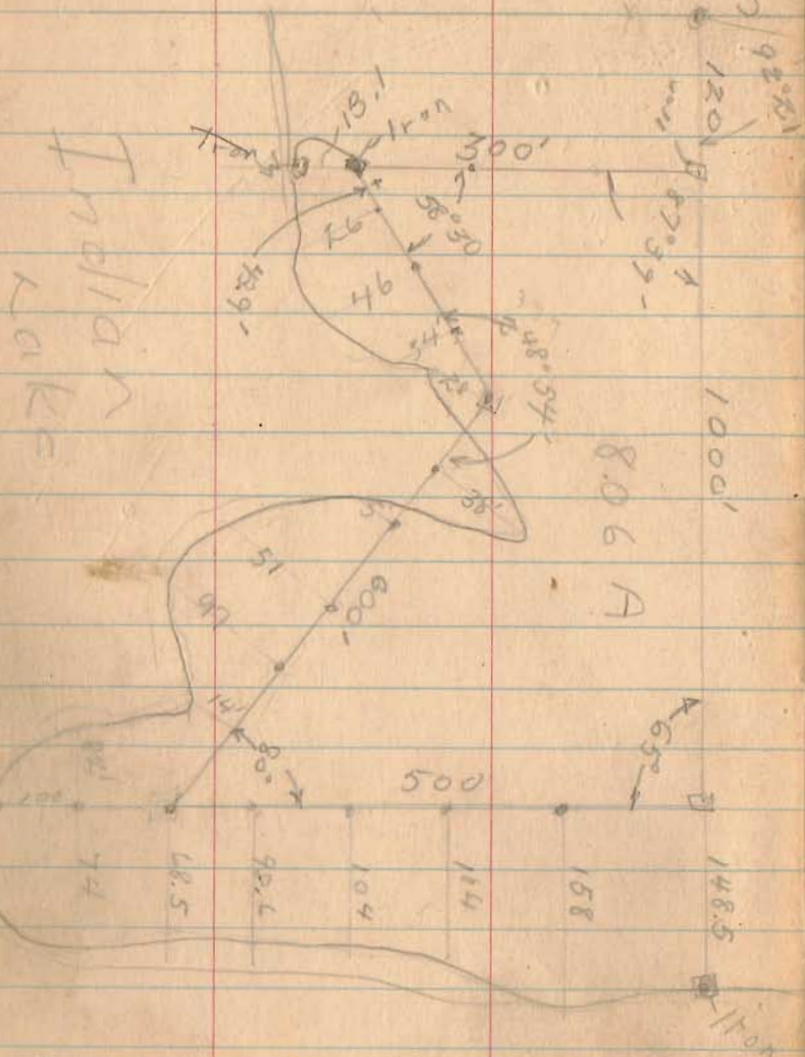
INDEXED ON MAP

James Conner Survey
Richland Township
O. V. M. S. 9968

June 19, 1950

4

Edith + Maude Woods



SEE BOOK 5 PAGE 10

INDEXED ON MAP
3922
Huber Set

Fred Keenan Survey
 Pleasant Township
 Sec. 1; T-2; R-14.
 Village of De Graft.
 (Between the Miami Rice Survey)

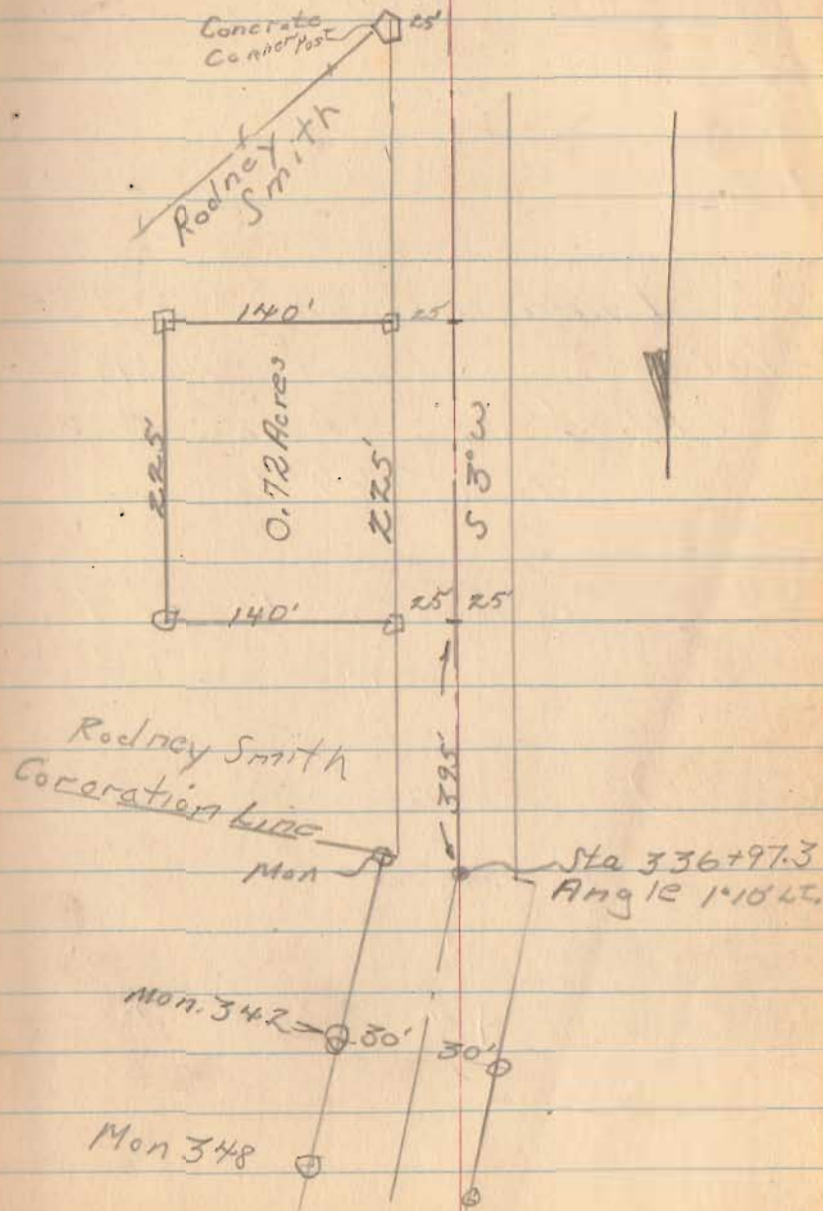
Record from Swanger
 + Margus Pike 1880-
 50'
 Pike book 5, page 373

3332

INDEXED ON MAP

July 8, 50

5



11 Roy Armentrout
 O.U.M.S 9972 Earl L. Brown
 Belle Center, Ohio

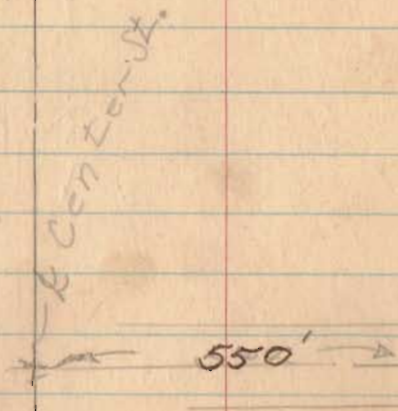
I measured on State St
 between Walnut + Main
 490.2'. It should have
 measured 492'

Error = $-.0045$ per 1'

3356

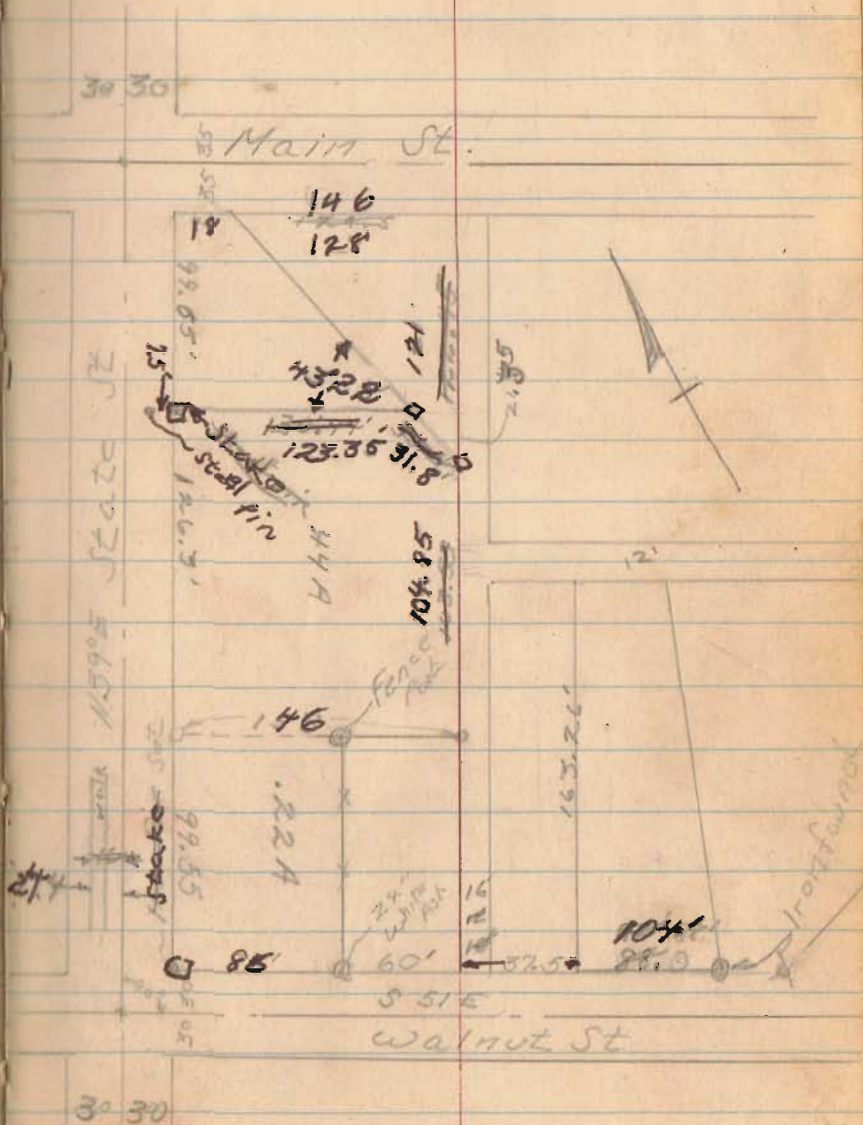
INDEXED ON MAP

See Page 76



July 12+13, 1950

6



Ralph Hesser Survey
Belle Center
O.V.M.S. 9972
Lots 212+213

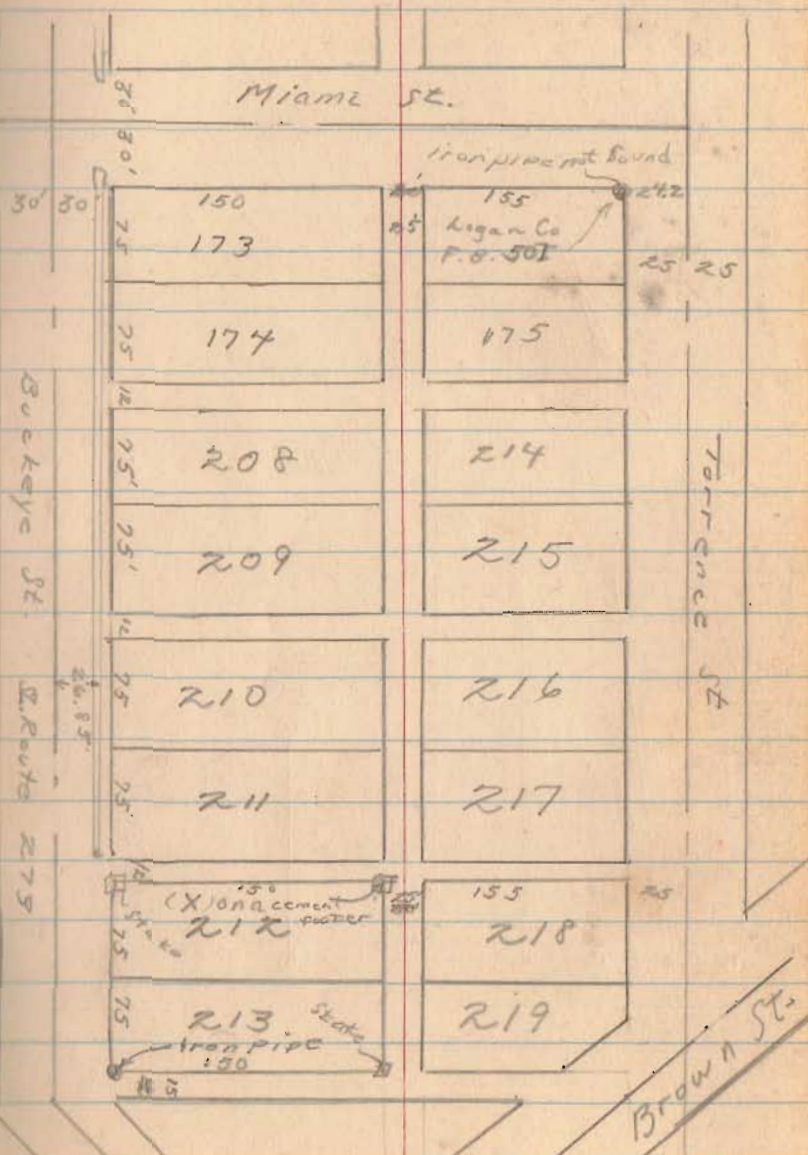
Possible excess between
Buckeye + Torrence Streets

6434

INDEXED ON MAP

July 15, 50

7



Belle Center

1285

INDEXED ON MAP

8

Burgess
H. 1/21
H. 2/28

H. 1/21
Bloom. 27

Hellen R. 13
Bloom

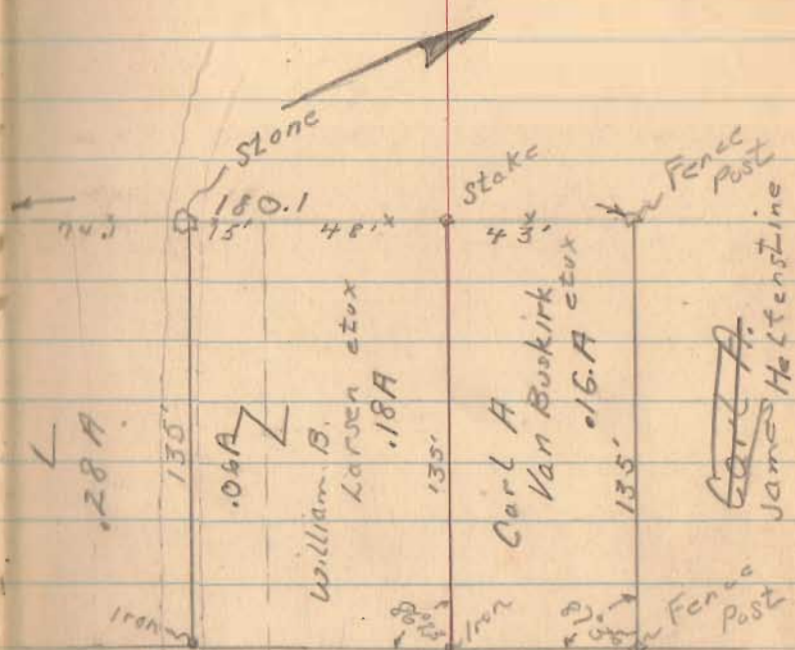
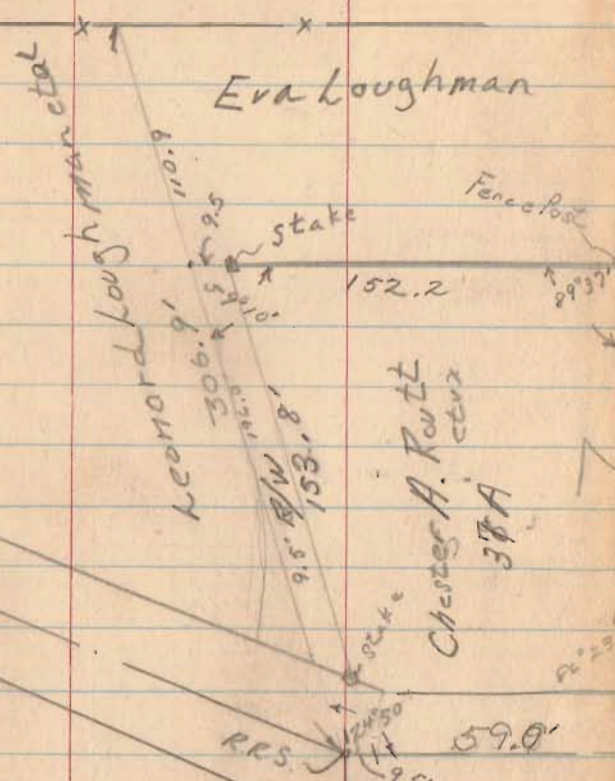
100'

100'

Big Springs

Sept 9+16, 1950

9



2023

INDEXED ON MAP

See County
F.B. 578

Charles Graham

Jefferson Twp.
O.V.M.S. #3820

Rd #10

S 84° 33' E

7° 20' RT

S 77° 13' E

Iron Sta 134+04.0
FB. C14
13 21
int. L = 87° 52'

Iron Sta 98+22' LT
8° RR

Iron Sta 98+11' RT
8° LT
16.35' 23.35'
12" Elm

12.78A

1950'

162'

620'

147.18'

Iron

April 19 + 28, 1951 $\frac{2}{2} \frac{11}{5} \frac{1}{9}$

S 80° 07' E
2720' 87° 52'

R.R. Spike

Stone

142+28
1° 20' LT.

Iron Sta 137+52
2° 54' LT.

Double
10" Walnut

872.6'

95° 41'

Hub

2031

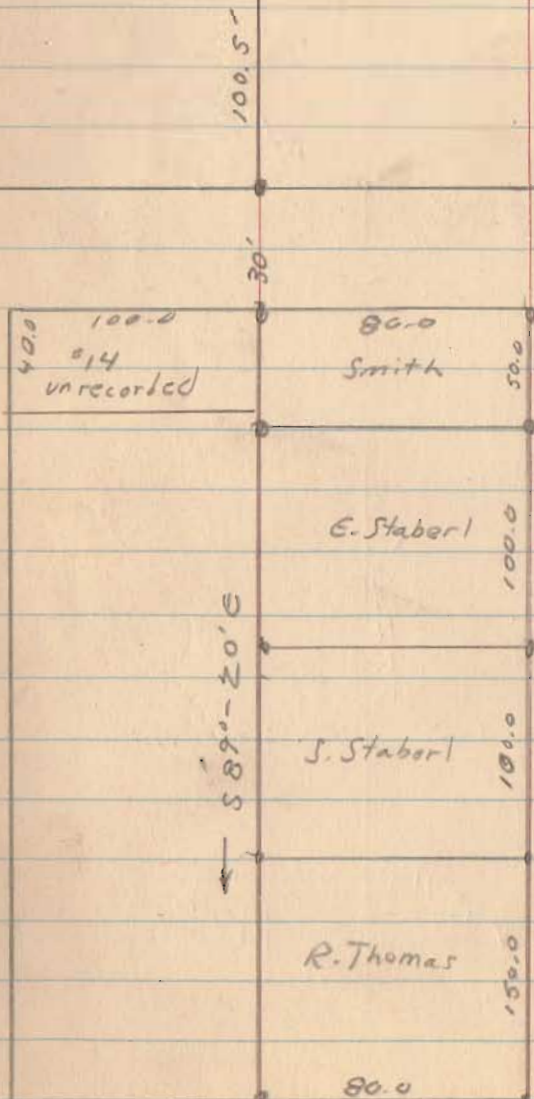
INDEXED ON MAP

Dec. 5, 59

17

← South

467.8' to N.W. cor. of E. $\frac{1}{2}$ of S.W. $\frac{1}{4}$ of N.E. $\frac{1}{4}$ of Sect. 27. →



2032

INDEXED ON MAP

Williams
Trade Survey

T_n lot # 46

Lake side

Allotment

Stokes twp.

Logan County, Ohio

Surveys # 2 + 3

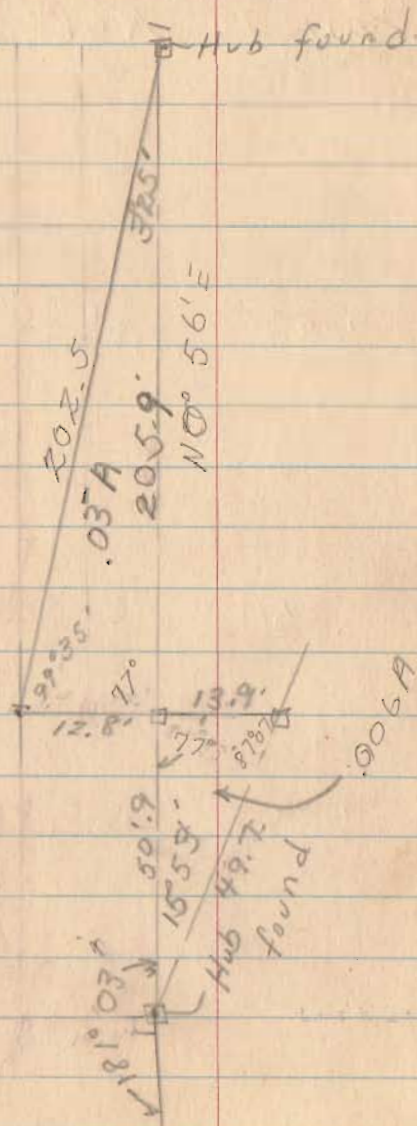
2032

INDEXED ON MAP

5
6

April 14, + 21, 1951 (13)

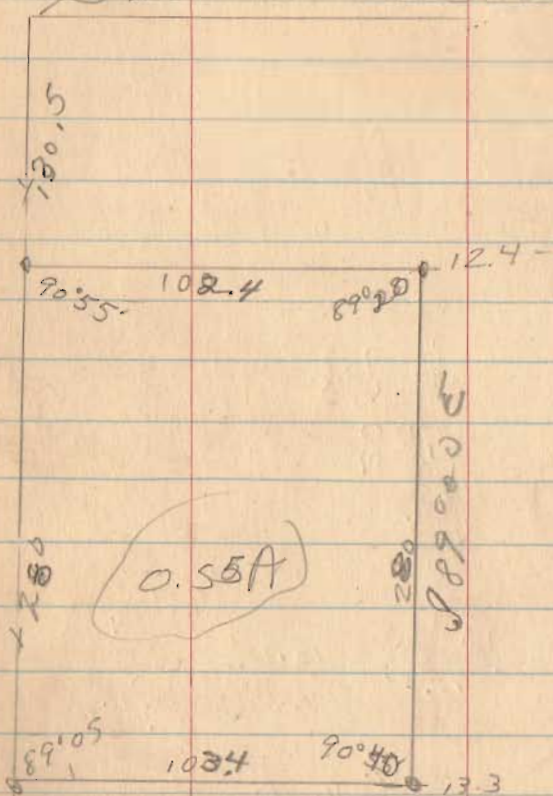
588.6
South



Williams
Stokes
27-C-8

Mar. 56

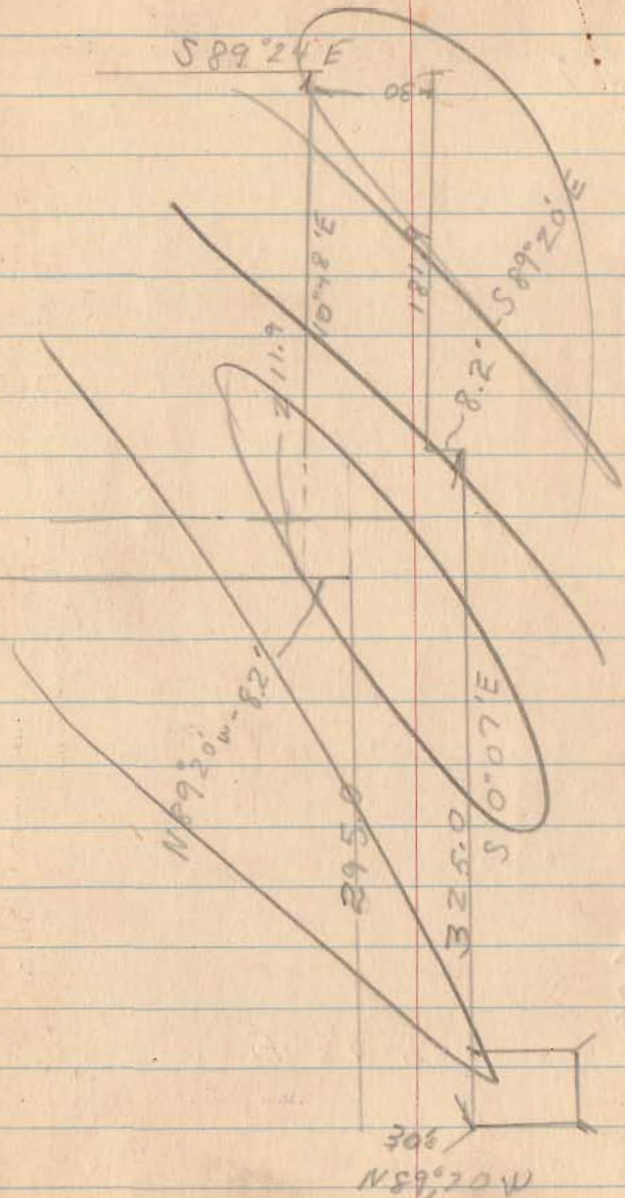
910 to correct (see Desc)



2032

INDEXED ON MAP

Apr. 21, 1951 (14)



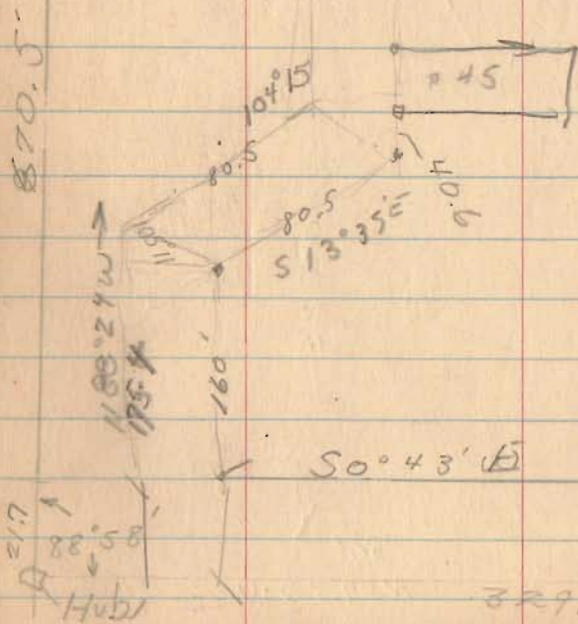
Propose Streets
H.L. Williams Land

326.6 x

Hub
90° 55'

IP 15
100'

20' →



50° 43' E

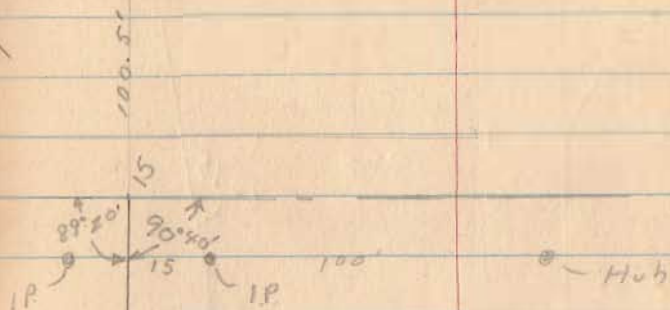
293 to Br.

329.3

To Original corner 583.4'

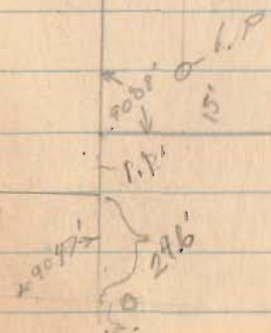
15

North →



497.8

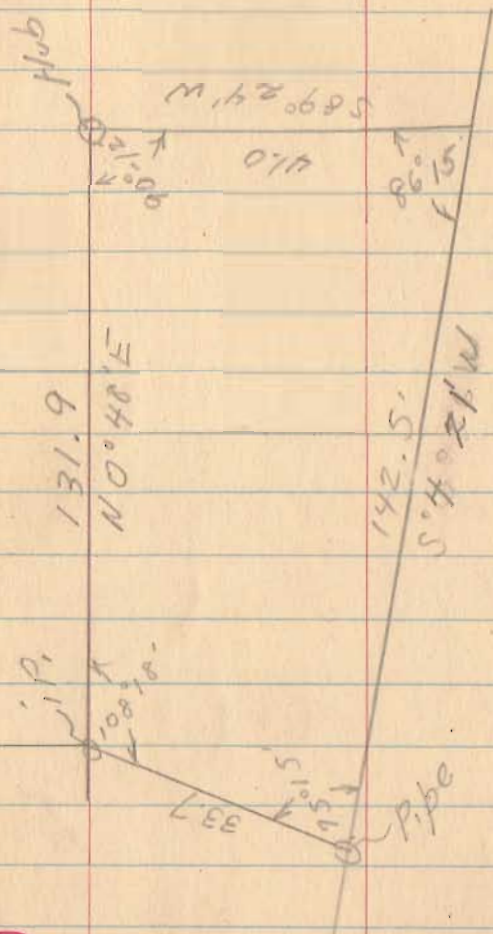
Case 15 16



2032

INDEXED ON MAP

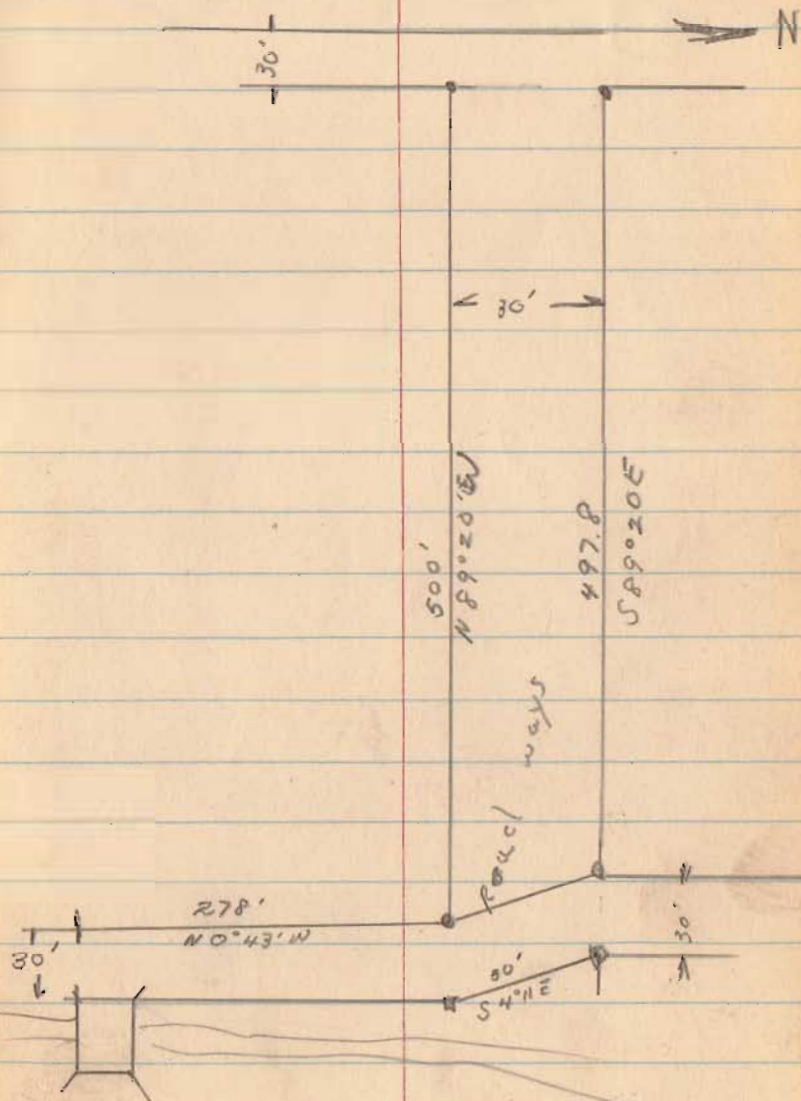
Williams to
McGabe ?



2032

INDEXED ON MAP

16



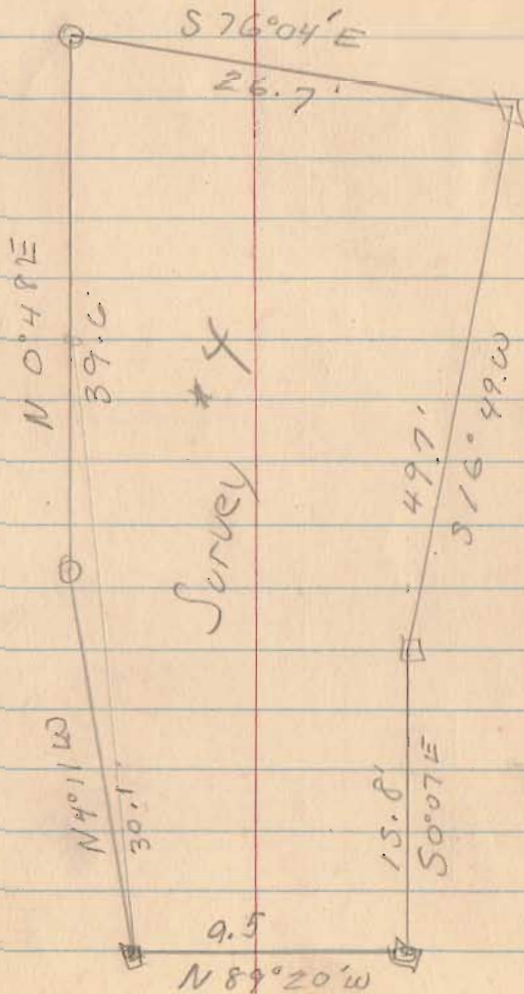
Williams

June 9, 51
Shirley
Doddson

17

2032

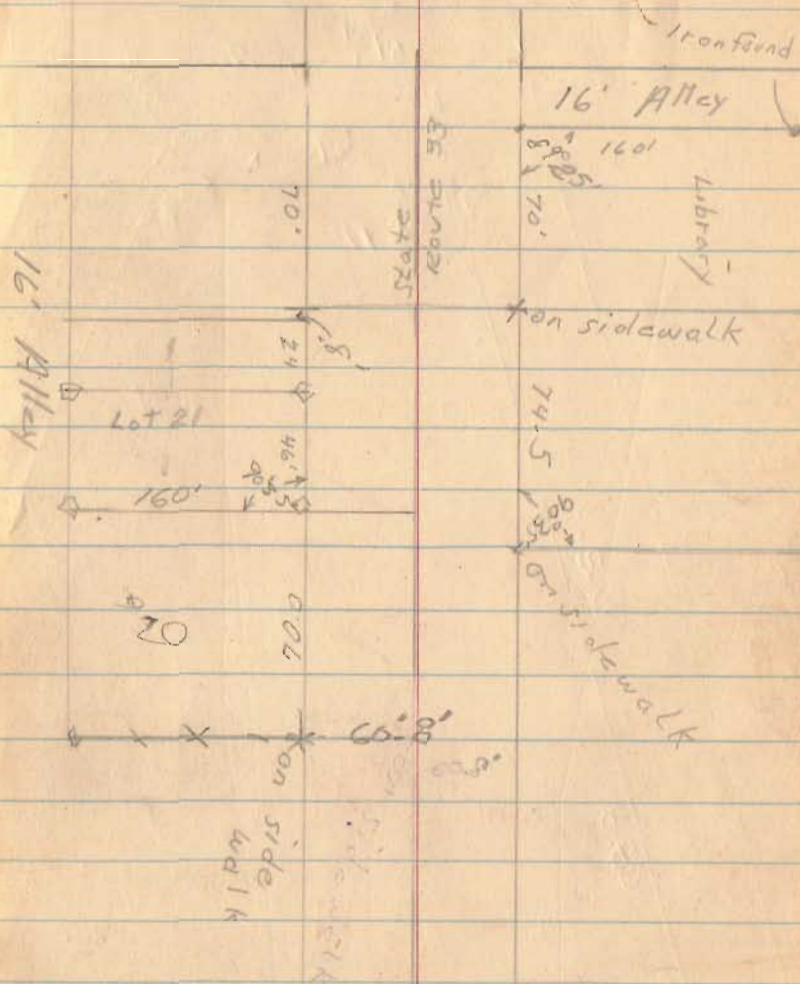
INDEXED ON MAP



Zell
DAVIS

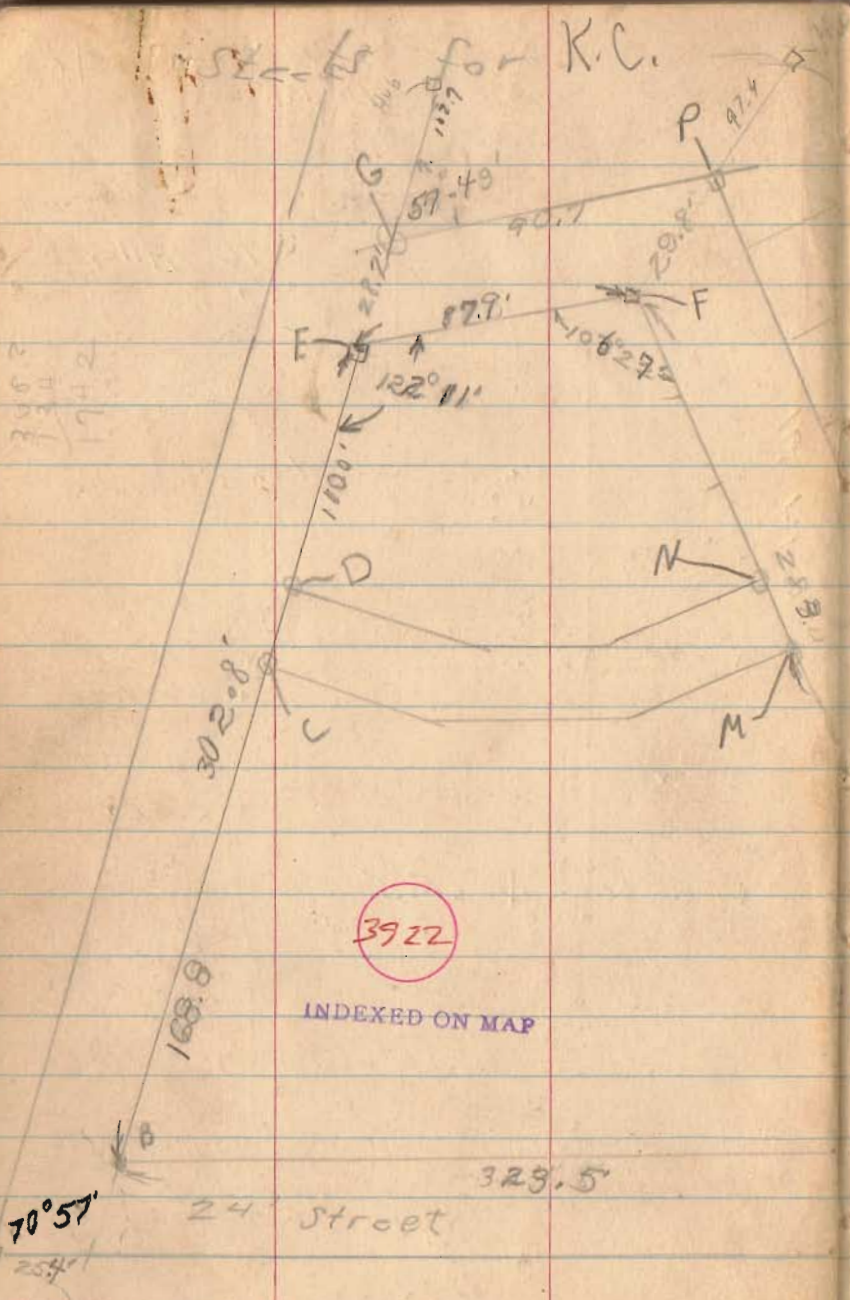
May 5, 51
Doddson

18

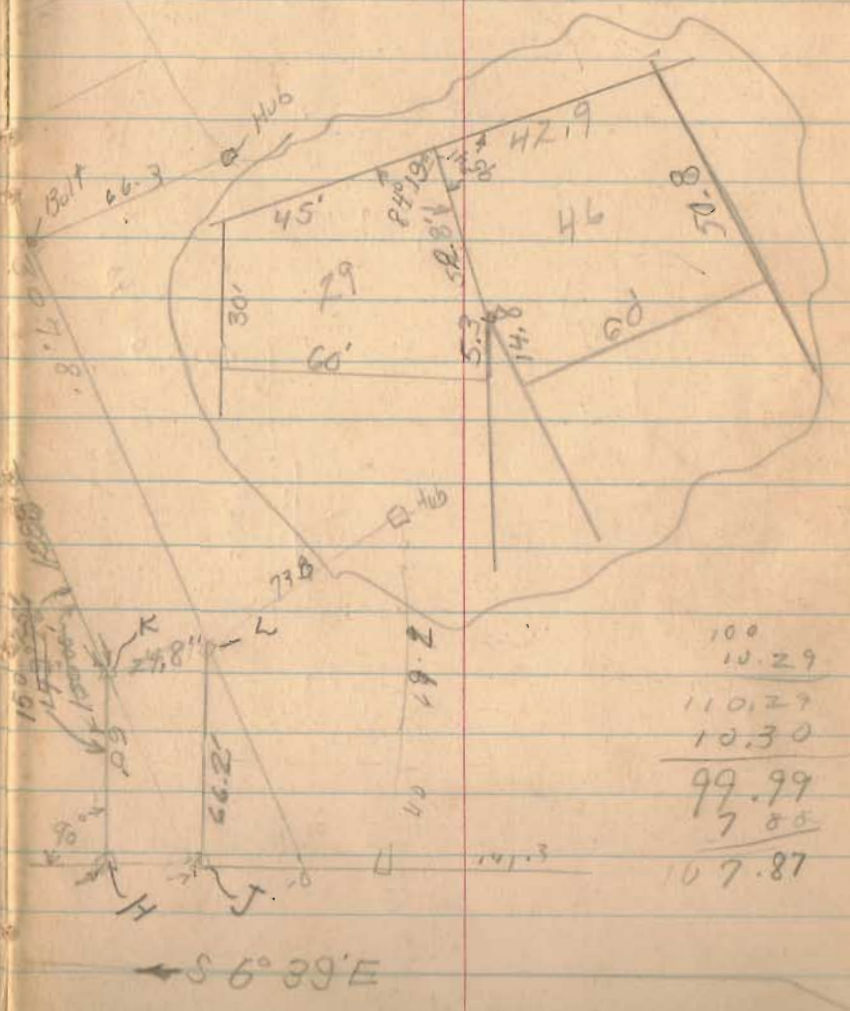
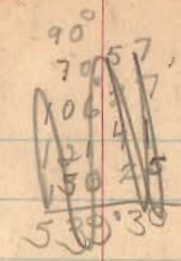


Sections for K.C.

745.2
734
174.2

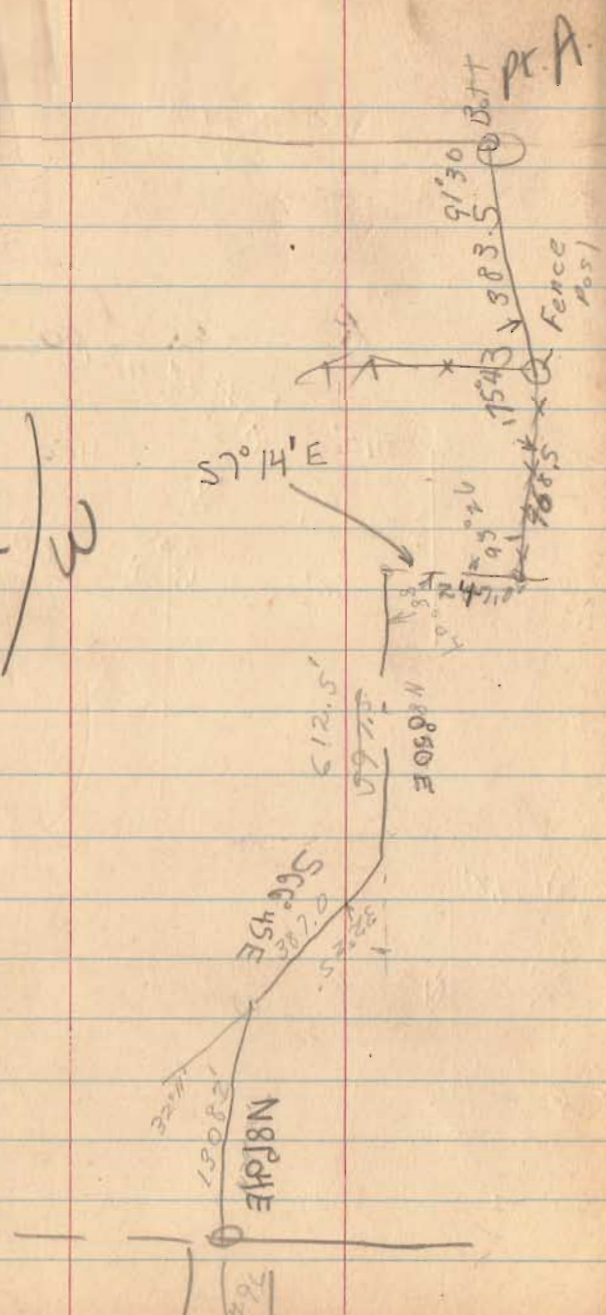


June 23, 1951



100
10.29
110.29
10.30
99.99
7.85
107.87

R/W



Kenneth Cronenwett
 130 HARDING WAY EAST
 GALION, OHIO

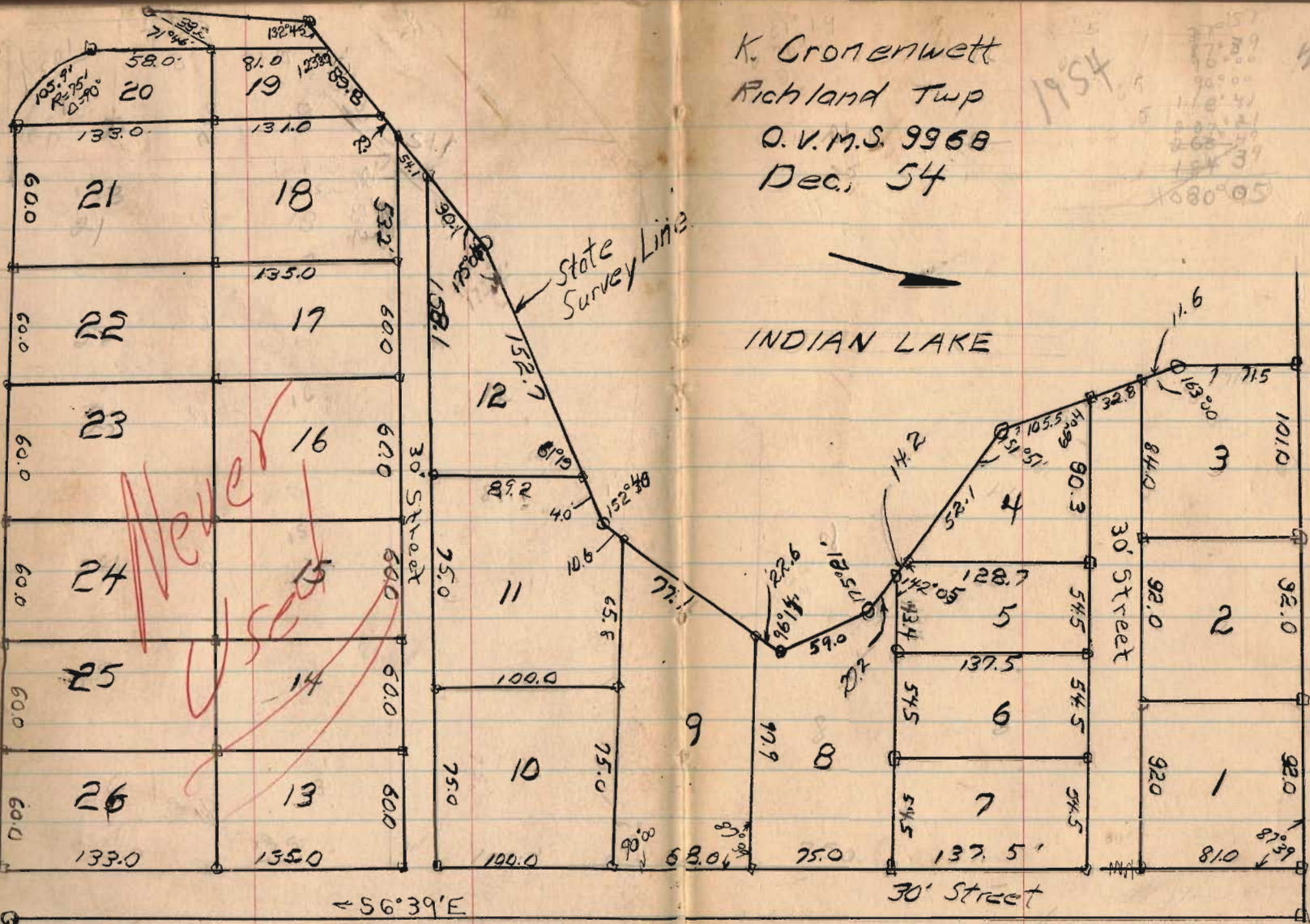
3922

INDEXED ON MAP

K. Cronenwett
 Richland Twp
 O.V.M.S. 9968
 Dec. 54

1954

21



$\angle 56^{\circ}39'E$

3922

INDEXED ON MAP

Goslee Survey
Washington Twp.

May 9, 51

22

P.P.C.

CH. 239.

North

574.3'

20'
20'

R.R.S.

223.5

R.R.S.

By deed 561.0'

SH. 932

931.4'

R. 85A

Stake

301.1'

Stake

122.29'

214.7'

19°10'

Fence Post

6146

INDEXED ON MAP

76°
94°40'
19°10'
177°41'
172°29'
5°40'00'

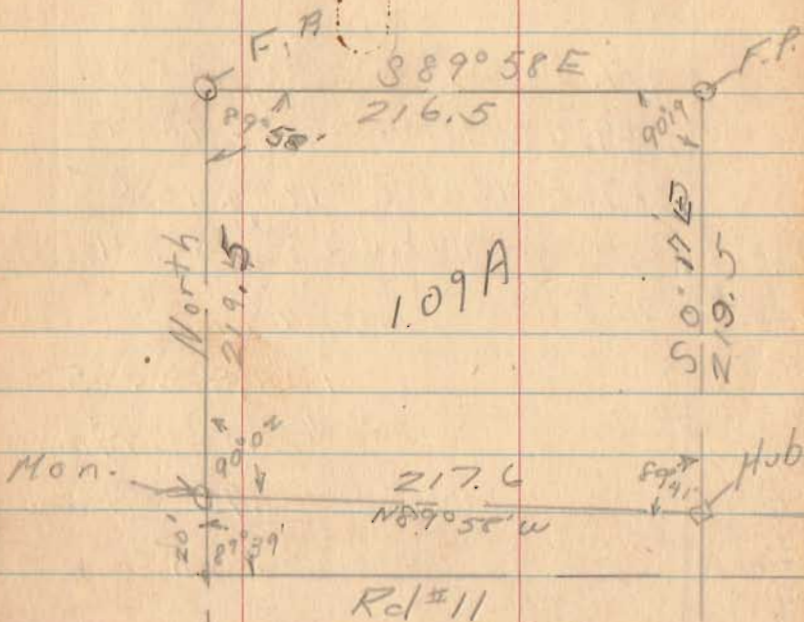
Dist	Bear.	Cos	Sin	Lat		Dep		OMD	Double Area
				+	-	+	-		
223.5	North	1.000	—	223.5					
361.5	S 76° 00' E	.2419	.9703		87.5	351.2	-351.2	-30,773.9	
301.1	S 73° 41' E	.2809	.9597		84.6	289.0	-991.4	-83,872.4	
314.7	S 66° 10' E	.4041	.9147		127.2	287.8	-1568.2	-19,947.50	
931.4	N 85° 20' W	.0814	.9967	75.8		928.3	-928.0	+70,342.4	
				299.3	299.3	928.3	928.0	2 243,778.9	
								121,889.5	
								\$2.80 Acres	
								from curve .05 Acres	
								2.85	

6146

INDEXED ON MAP

Dolph Survey
 Harrison twp
 Sect. 10, R. 3; R 14

May 15, 1951-24



(See Bk
 3 pg 419)

2805

INDEXED ON MAP

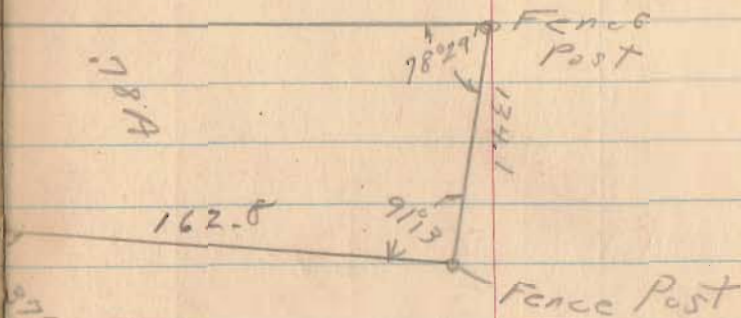
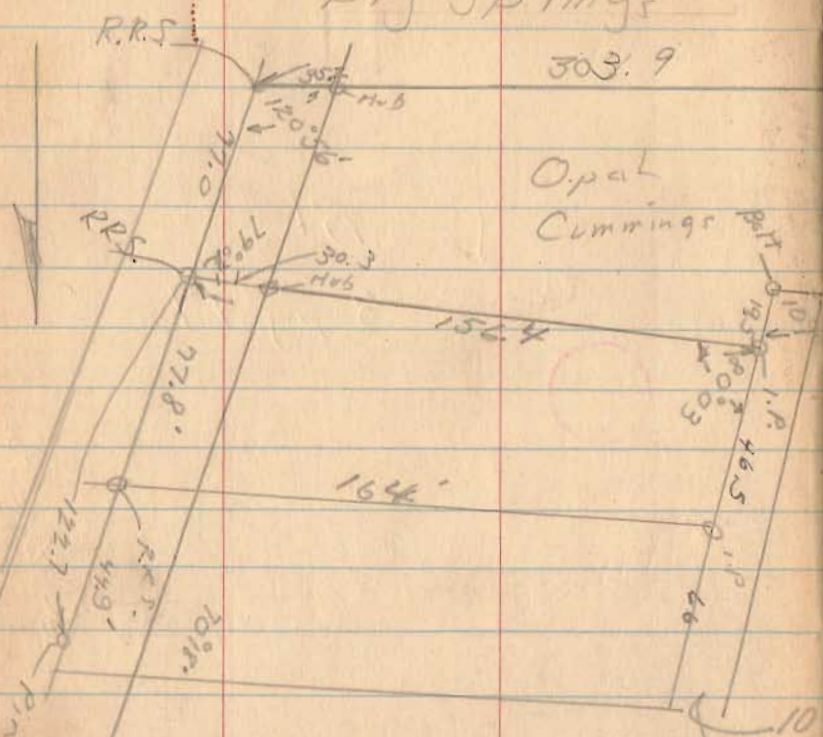
Stone found

Dist.	Bearing	Cos	Sin	Lat + -	Dep + -	D.M.P.
219.5	North	1.0000	.0000	219.5		
216.5	S89°58'E	.0006	1.006		216.5	
219.5	S0°17'E	1.0000	.0059	219.5	1.1	
217.6	N89°58'W	.0006	1.0000			217.6
				219.7	219.7	217.6 217.6

Opal Cummings Survey
Big Springs

Rushcreek Tap.
O.V.M.S. 9956

March 19 51
25



3399

INDEXED ON MAP

Dist	Bear	Cos	Sine	Lat		Dep		D.M.D.
				+	-	+	-	
77.0	S 37° 30' W	.7934	.6088		61.1		46.9	46.9
303.9	N 83° 26' W	.1144	.9934	34.9		302.9	301.9	395.8
134.1	N 18° 05' E	.9506	.3104	127.5		71.6		656.2
162.8	S 73° 08' E	.2902	.9570		47.2	155.8	155.8	458.8
19.5	N 36° 29' E	.8040	.5946	15.7		11.6		291.4
156.4	S 63° 28' E	.4467	.8947		69.8	139.9	139.9	139.9
				178.1	178.0	348.9	348.8	

Fred Yoder
OVM Survey
10503
Richland Twp

Concrete
Pool

1796.0'

N 6° 31' W

1078.0'
S 88° 14' W

32.91 Acres

Iron

196.0'
South

1100'

S 22° 53' W

Iron

40'
Iron Pipe

1203.1'

S 38° 38' E

North

Branch
Miami River

Less than 180'

Concrete Post
40'

N 89° 21' E
1920.0'

S 63° 50' E
277.0'

S 11° 25' E
1000'

July 21, 51

26

3348

INDEXED ON MAP

S.H. 130

Fred Joder

27

Dist	Bearing	Cos	Sin	Lat +	Long -	Dist	Bearing	Lat +	Long -	D.M.D	Double Area
150.0	S 22° 59' W	.9206	.3905	-	-	138.1		58.6	-	58.6	+ 8,092.7
196.0	South	1.0000	.0000	-	-	196.0		-	-	117.2	+ 22,971.2
1078.0	S 83° 14' W	.1178	.9930	-	-	127.0		1070.5	-	1187.7	+ 150,737.9
1836.0	N 6° 31' W	.9935	.1135	1824.1	-			208.4	-	2466.6	+ 4,499,325.1
192.0	N 89° 22' E	.0064	1.0000	1.2	-			192.0	-	2483.0	- 2,979.6
272.0	S 63° 59' E	.4386	.8987	-	-	119.3		244.0	-	2046.6	+ 243,159.4
340.0	S 26° 11' E	.8974	.4412	-	-	305.1		150.0	-	1652.2	+ 507,086.7
12,031	S 38° 38' E	.7812	.6243	-	-	939.8		751.1	-	751.1	+ 766,043.8

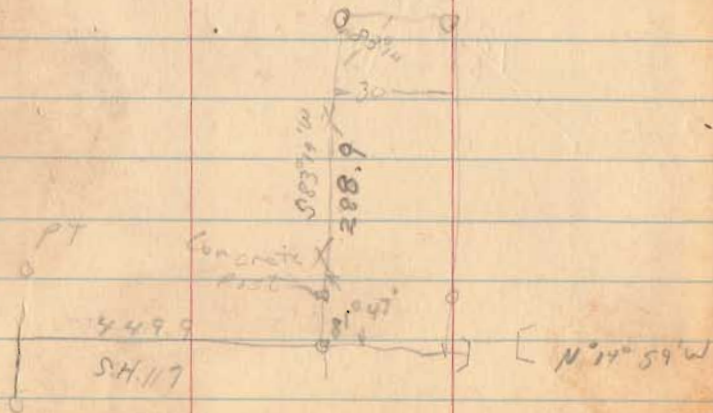
21 - 2,867,213.5

43,560 / 1,433,606.75

32.91 A

3348

INDEXED ON MAP



Mrs Huston
Sandusky st
Bellefontaine, O

July 30, 1932

Sandusky measures $2\frac{1}{2}$ long
between Main + Det rd to

add .0057' per foot of
frontage

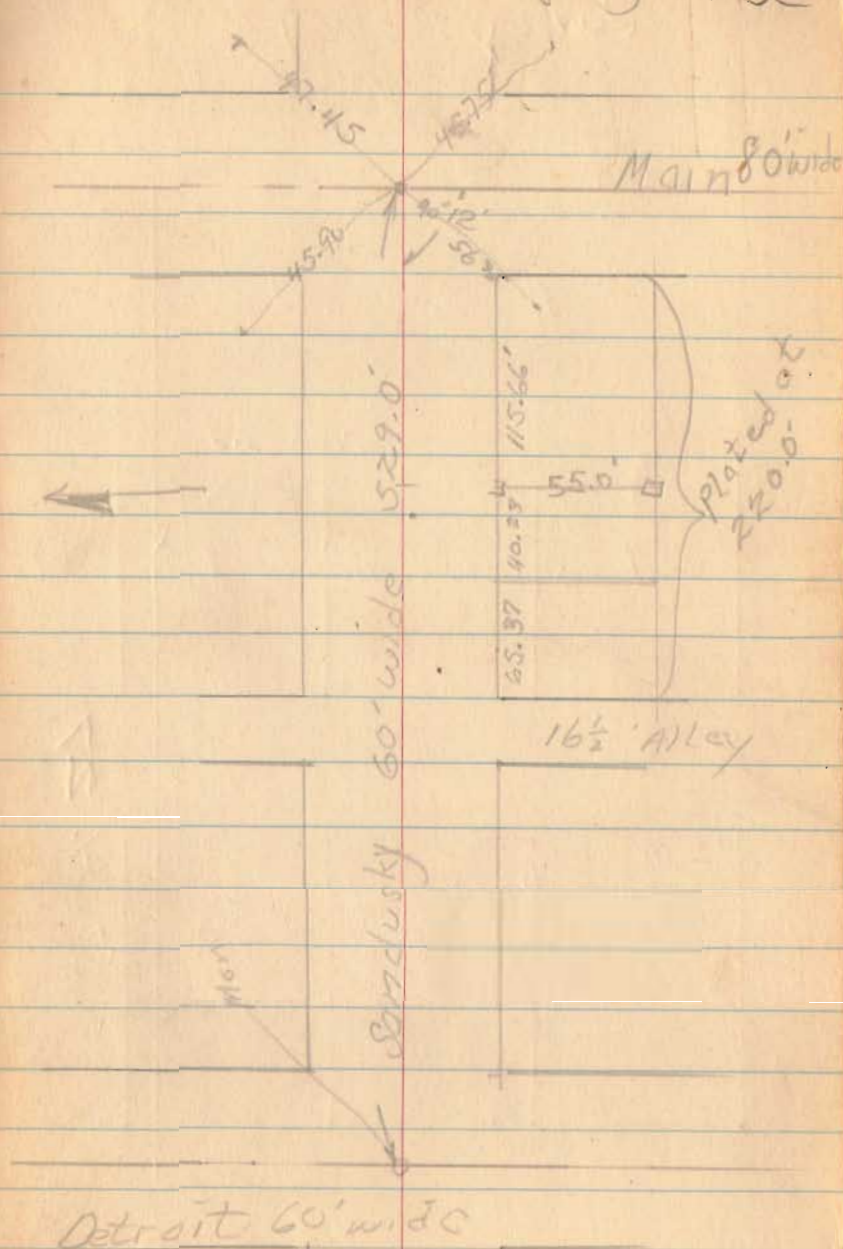
20.57
60
60.3020

55
225
285

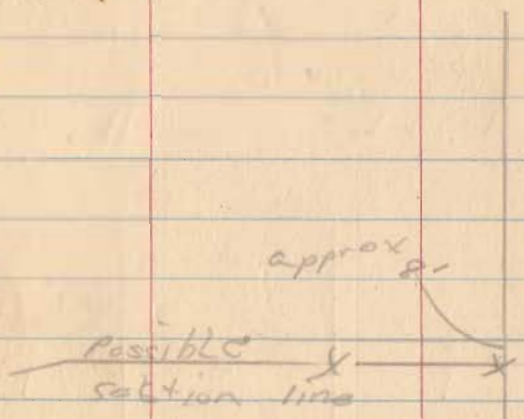
51.335

1229

INDEXED ON MAP



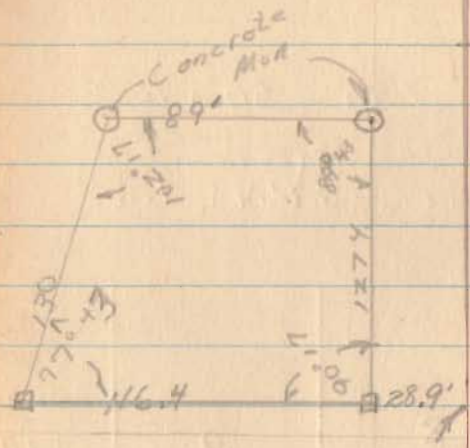
Quincy Aug¹¹ 1951
Custom border



3132

INDEXED ON MAP

St. H. 27



School Ground

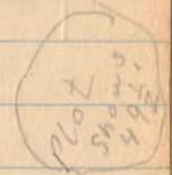
177.4

342.4

to South 66°

to Walnut 66°

16 1/2' Alley



132

132

to Main 57 1/4

FOREST C. WATKINS
O.V.M.S. # 9823

all lots 50' x 100'
4 being square +
|| with O.V.M.S. line

7

8

9

10

11

12

30.0' R/W

6

5

4

3

2

1

350.0'

240.0'

169.0'

184.0'

85'

55.0'

5.0'

100.0'

42.0'

30.0' R/W
97.4'
561.0' W

RUSH CREEK LAKE

AUG 24, 51

34

S.E. CORNER
O.V.M.S. # 9823

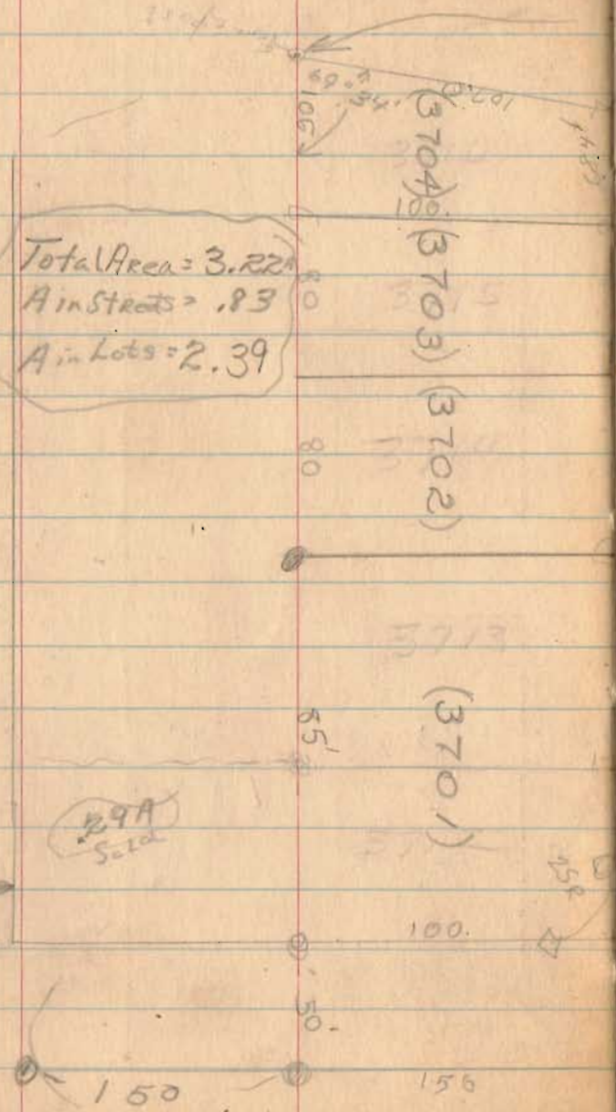
2065

INDEXED ON MAP

Brookwood Addition
 For
 Blue Jacket Construction Co.
 V.M.S. 4399 Lake twp

← To Lindon
 1148.2
 Sandusky

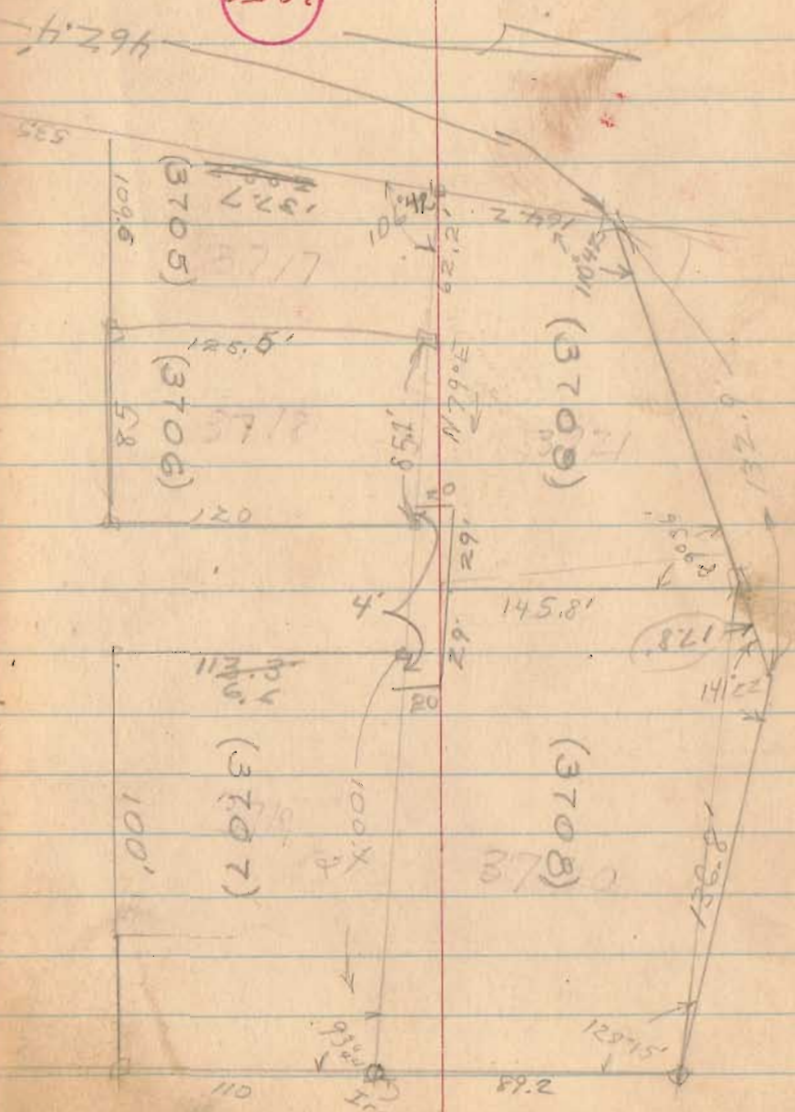
Total Area = 3.22
 A in Streets = .83
 A in Lots = 2.39



Oct. 6 13, 1951
 36

INDEXED ON MAP

2050

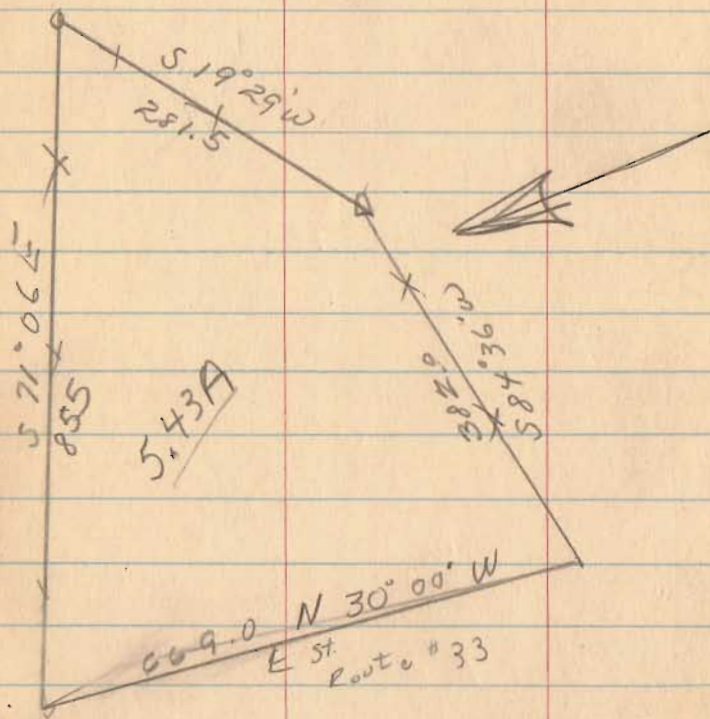


Goose for
COURIER

~~Midway~~

Jefferson Twp

V.M.S. 3137



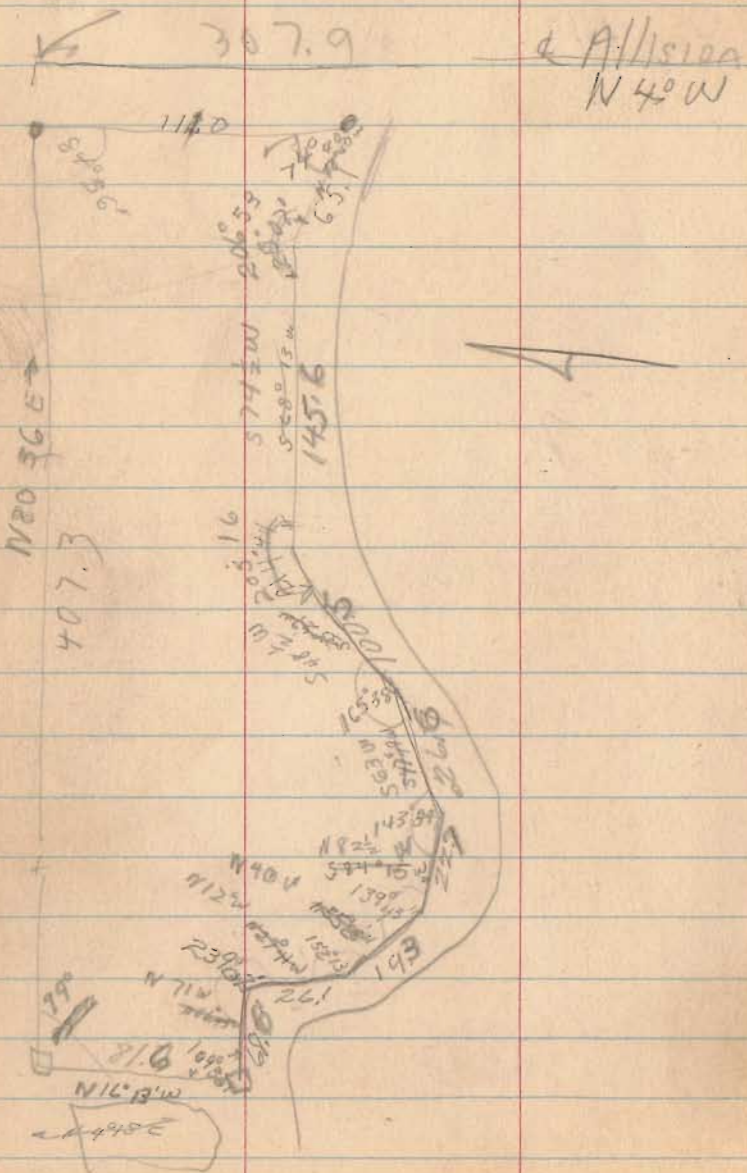
Nov 23, 51

38



INDEXED ON MAP

Millegian - Huntinton



Nov 24, 51 39

171° 46' N 12° 14' W
616.7

3010

INDEXED ON MAP

From 803 Acre tract
O.V.R.S. 4990

63
84° 36
74° 40
206° 53
205° 16
165° 38
143° 34
139° 43
152° 13
239° 02
109° 30
89° 55
1670 0
52 05
167 40
12 11
213 07
71 40
3 34
291 11
60 13
179 65
105 20
74 40
214 41
178 13
146 31
573 29

(25.2)

(120.0)

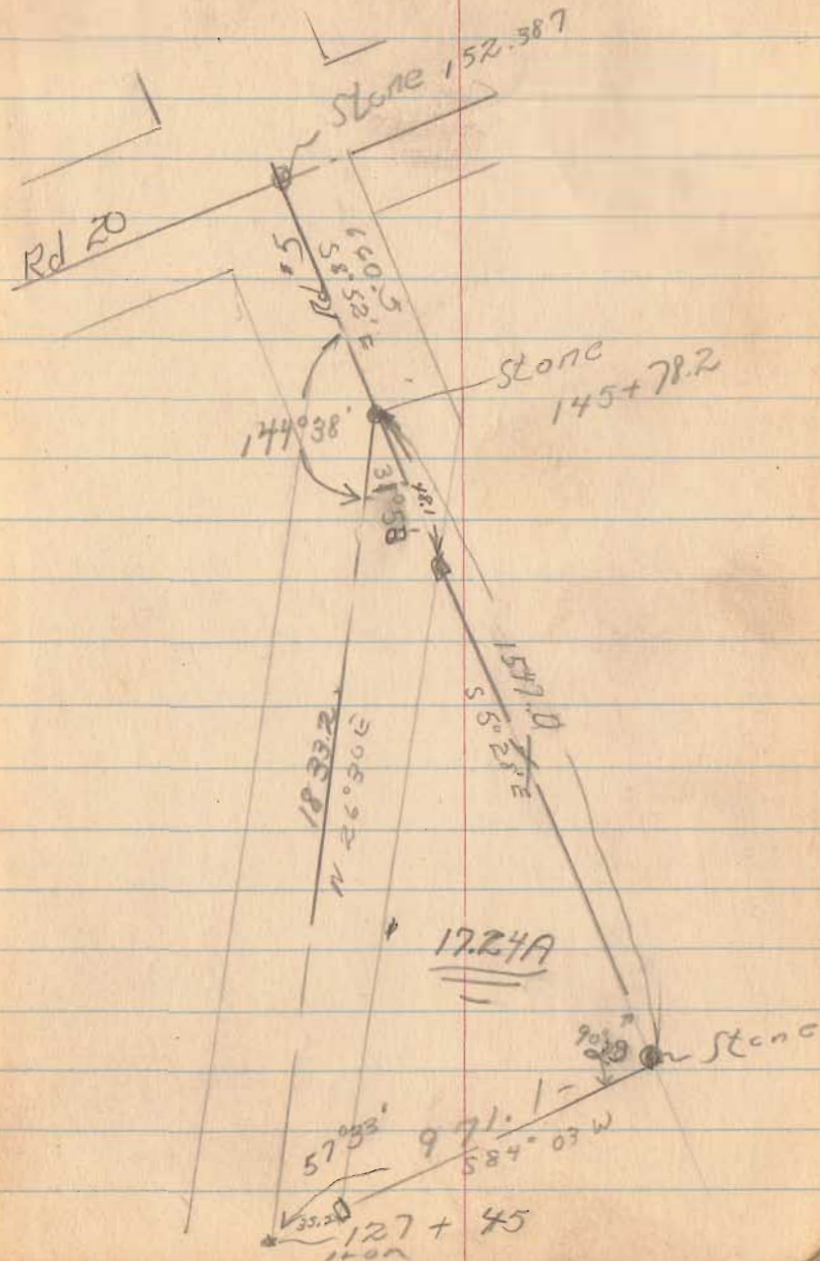
Karl Rollins
 106.20 Acres
 O.V.M.S. #9888
 C.H. #5 - 60' wide
 Ruslo creek

6435

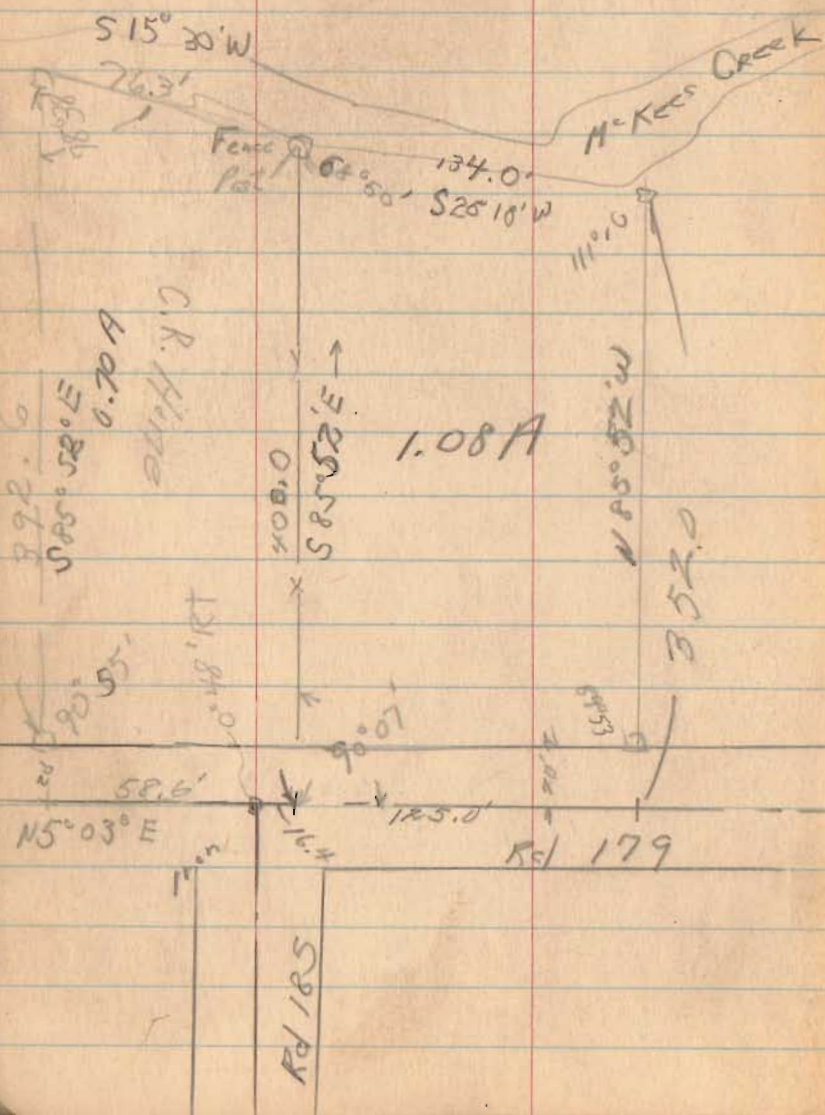
INDEXED ON MAP

March 8, 52

Shirk 44
 Addison



Emory V. Hower
Jefferson
D.V.M.S. #3220

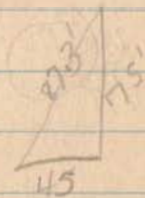


3-25-52
Cloudy

Shirk
Dadson

46

See P. 54
for
Addition



75

164

586

4929

N° 4° 15' E

INDEXED ON MAP

~~N 40~~

Rutherford

284.7
310.5
14235
28470
8541

43560
2

2.05

284.7

4356 / 8939.9.35
87123

306 / 87120
612

22794
21780

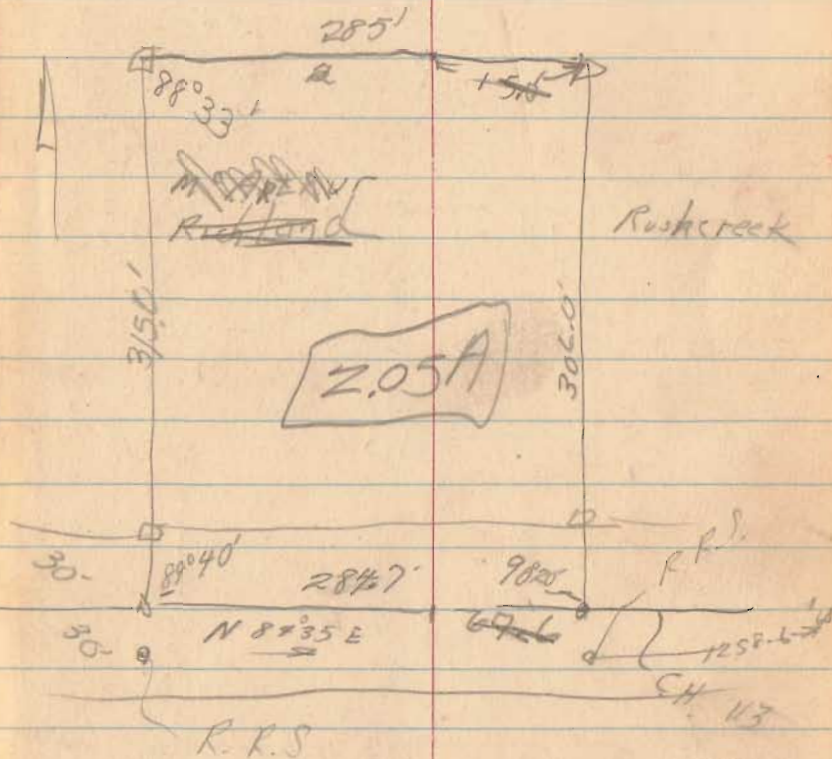
2592
2448

1440
1224

2160
2142

4-11-52⁴⁷

O.V.M.S.
9932



3390

April 5th 48

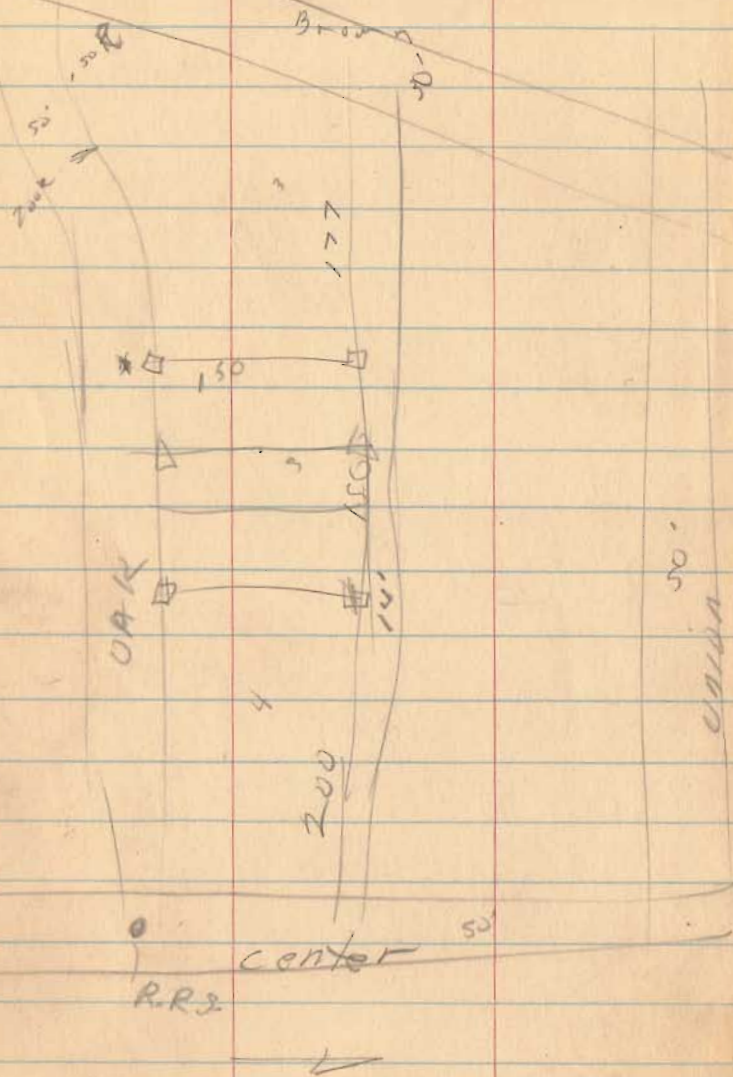
Clara E Kennow

Lake view

Lot 342, 343, 344

6436

INDEXED ON MAP



Mont Cook
Rich land

V.M.S. 9972

Fence was on
all but last 100' feet

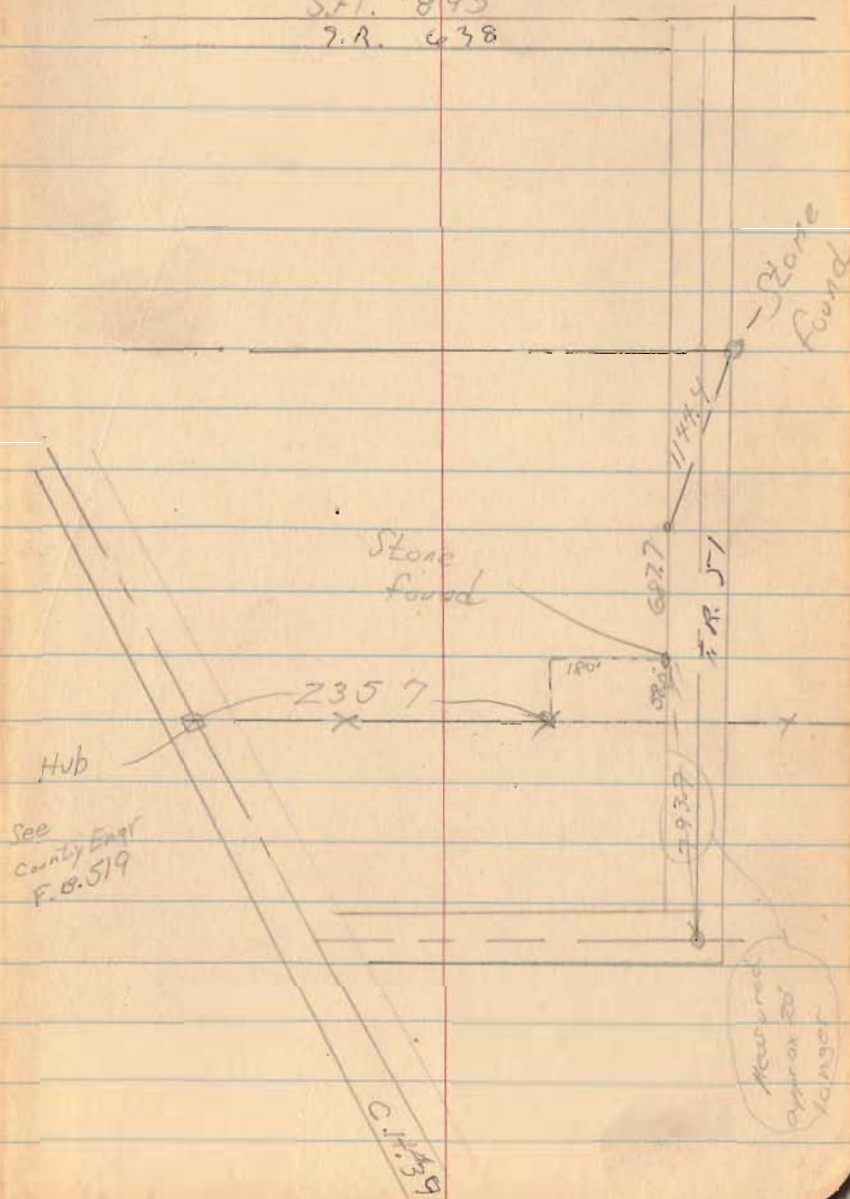
6437

INDEXED ON MAP

April 11, 51 49

S.H. 895

T.R. 638

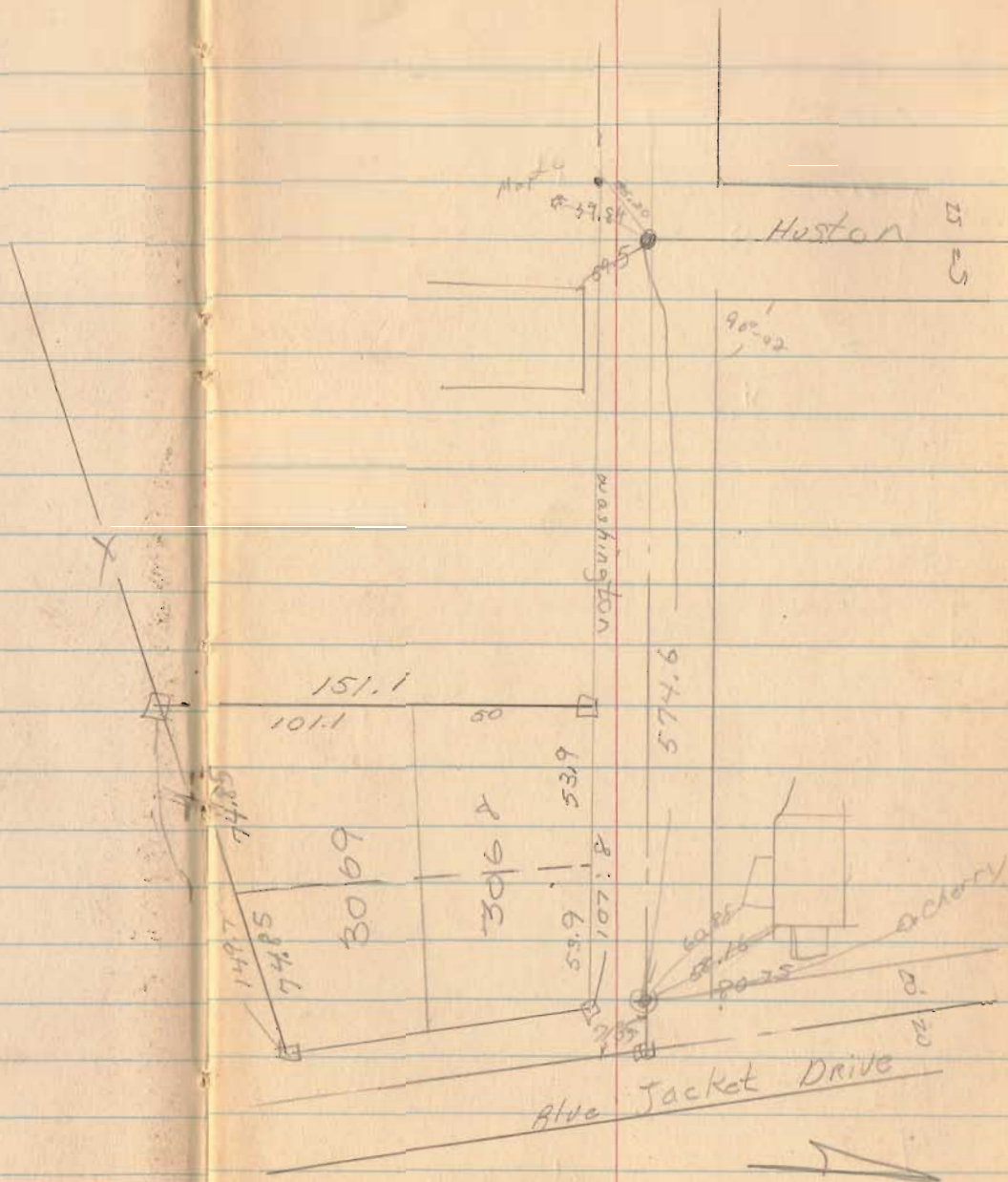


See
County Eng'r
F.B. 519

Measured
April 20
1951

Clyde Ropp
Washington St
Bellefontaine, O
Lots 3068 & 3069

4-11-52 50



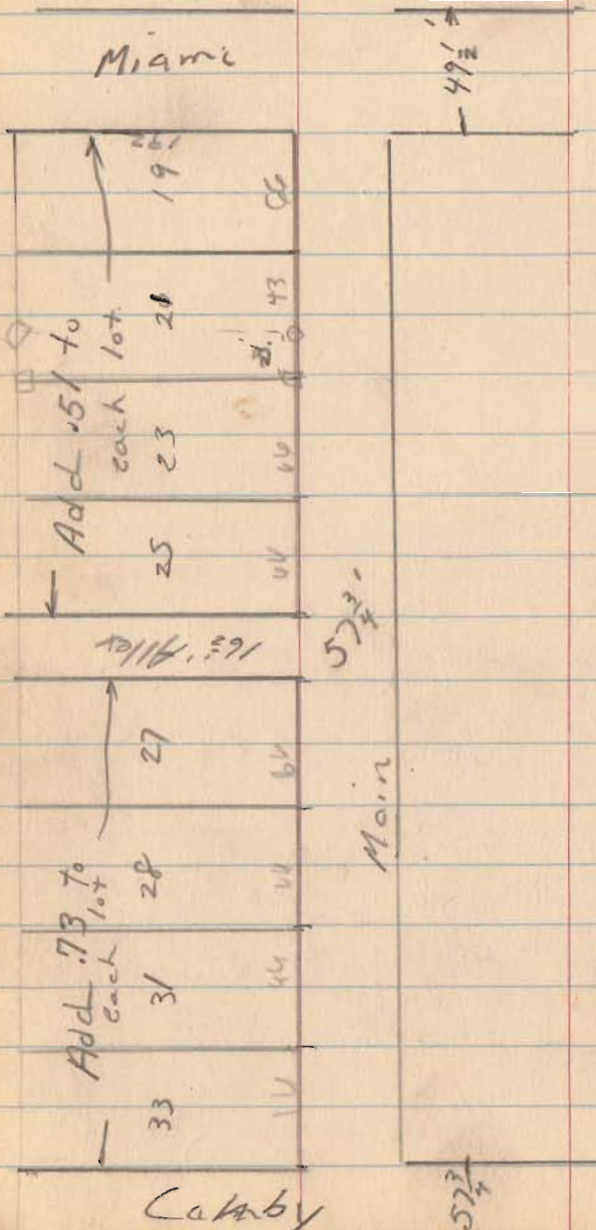
6438

INDEXED ON MAP

Quincy

June, 52

Shirk
Dudson 51



6349

INDEXED ON MAP

Fork
from Rose Graham

Aug 1953

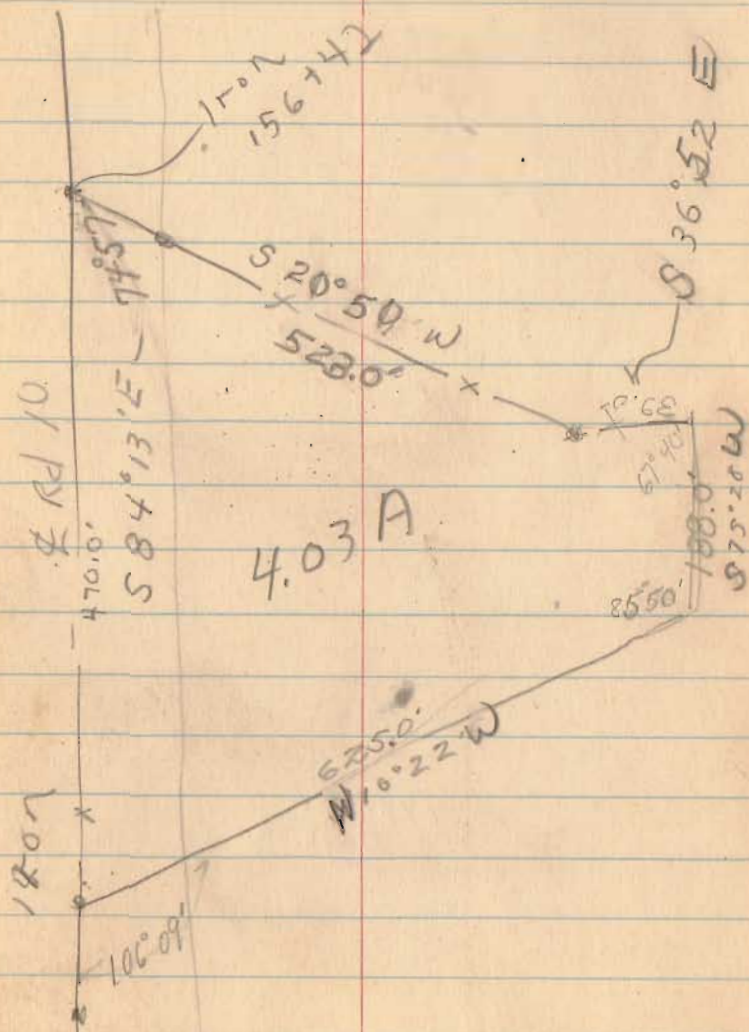
52

See County Engr.
F.R. 614 page 24

Jefferson Twp
O.V.M.S 6450

4109

INDEXED ON MAP



Emory V Hower
 Jefferson Twp
 S.U.M.S. 4498

Aug 26, 52

53

See County Engr.
 F.B. 607 M 50

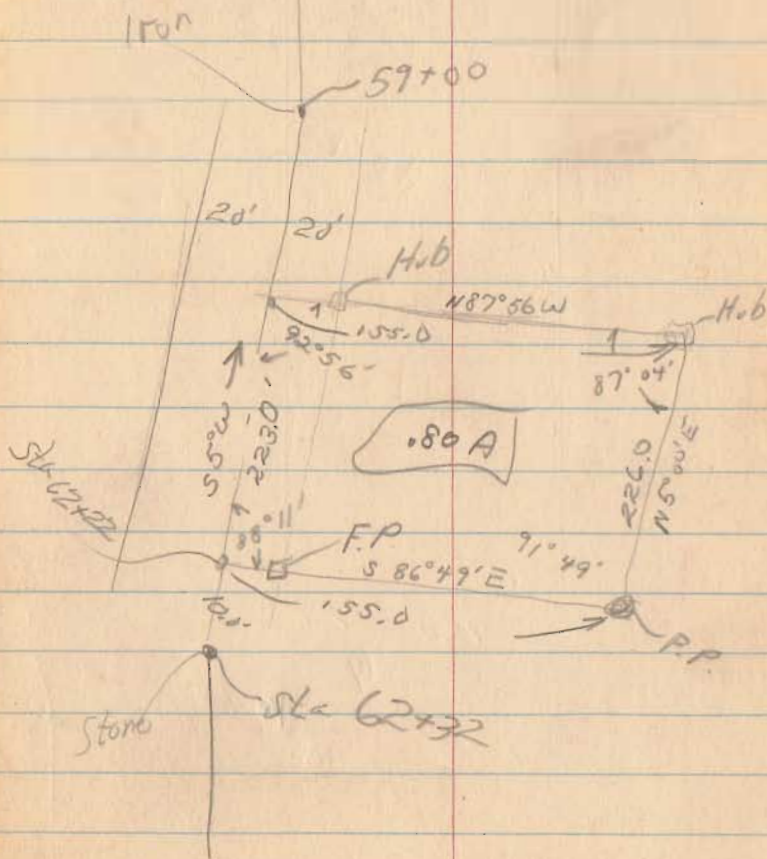
85 B

A

155	0193	91.44
	3.00000	1.07
	135	92.56
	1450	
	1795	87.04
	650	87.04
	465	75

6125

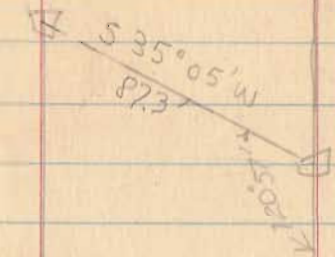
INDEXED ON MAP



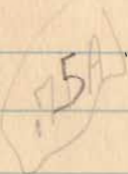
C. R. Hone

1-23-53 54
2

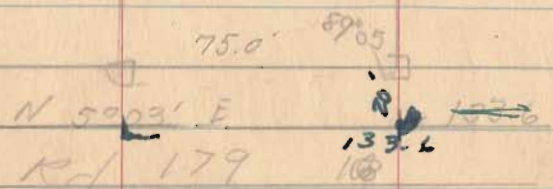
See page 46



436.4
S 85° 52' E

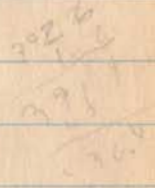
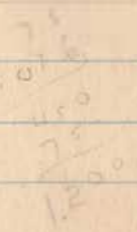
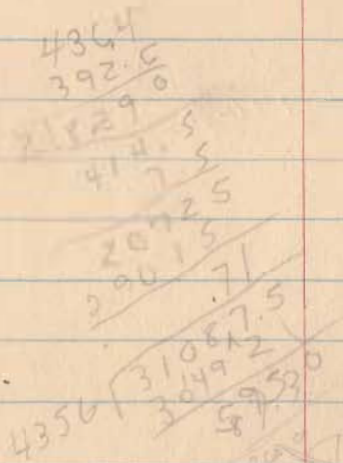


392.6
N 85° 52' W

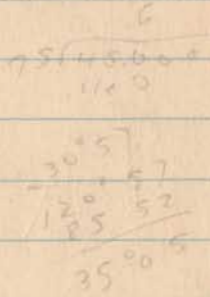
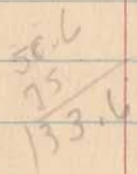


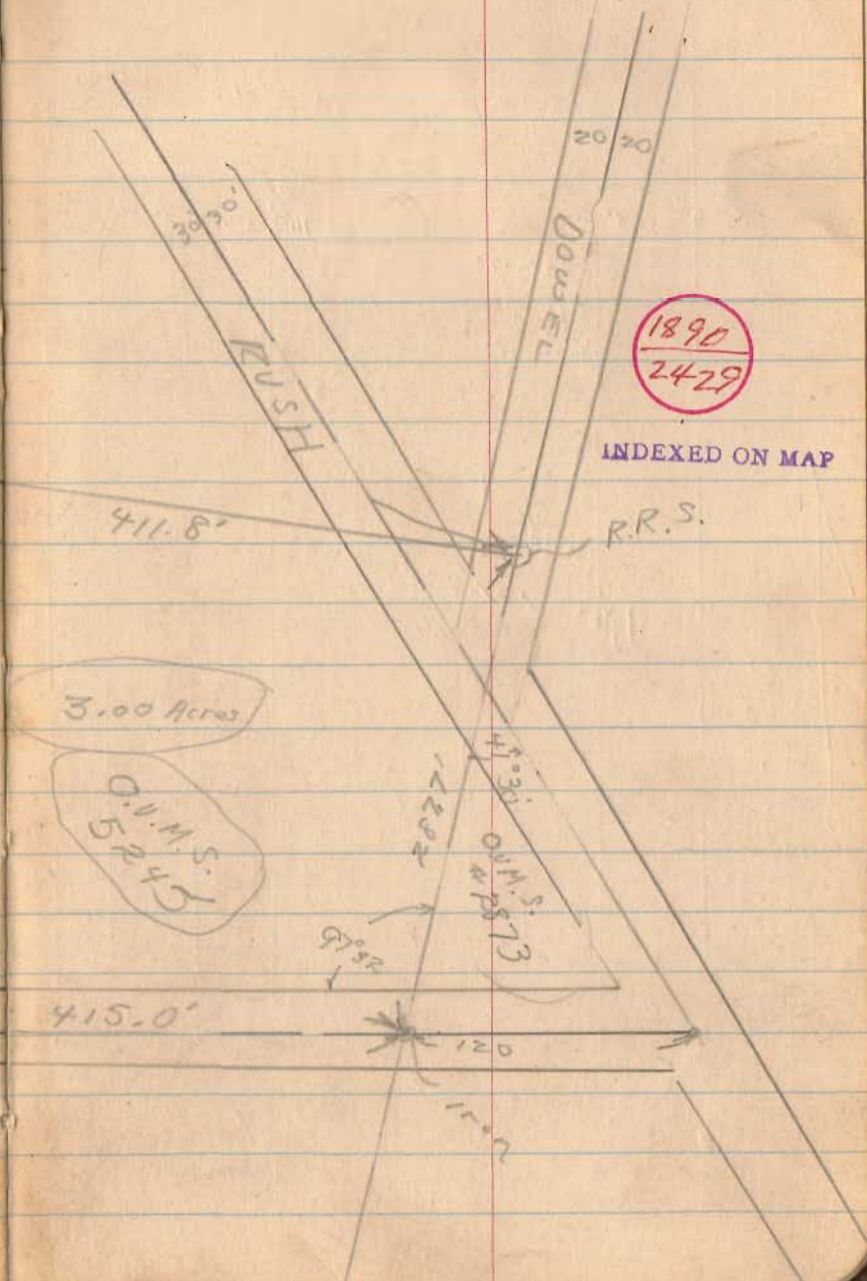
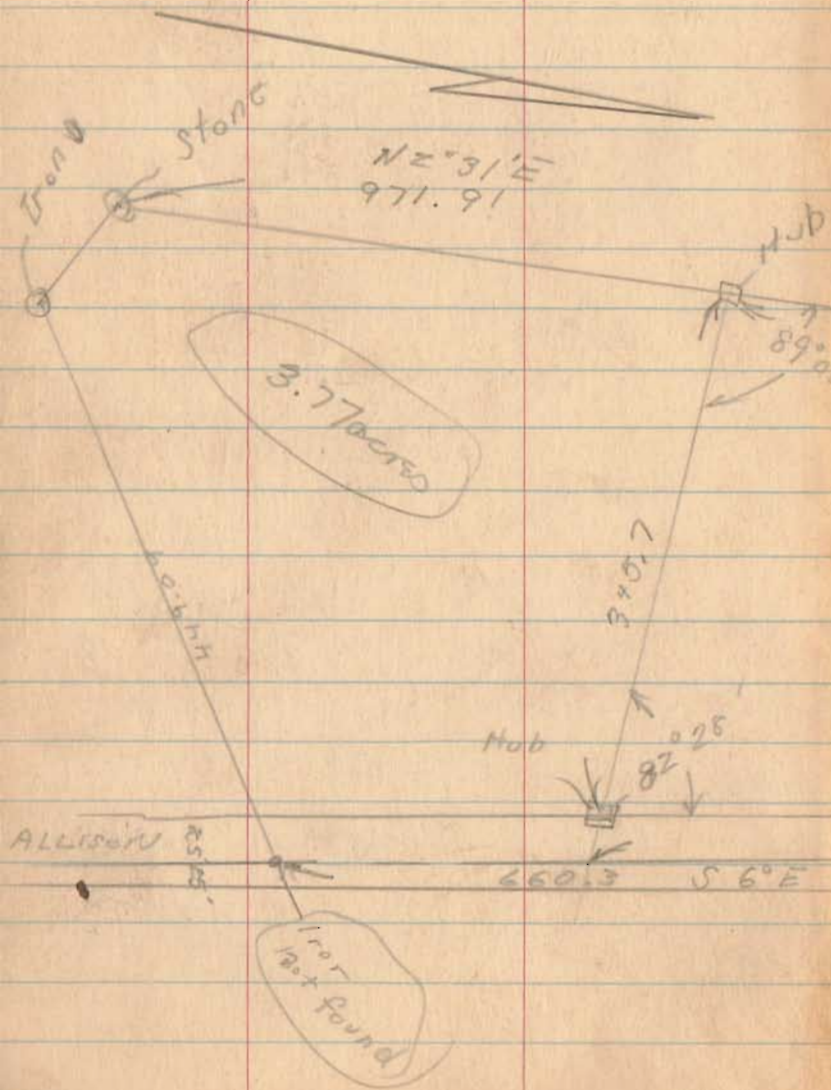
Iron

26/185



INDEXED ON MAP

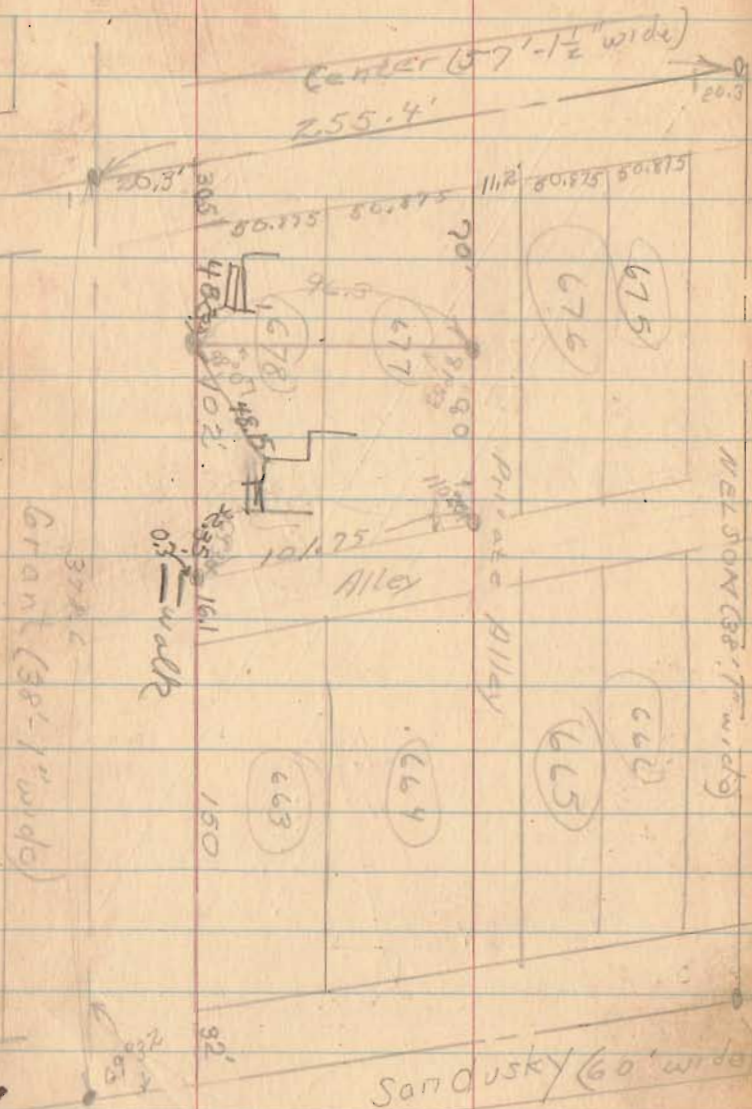




H. E. BLAIN
 BELLEFONTAINE, O

5-1-53

56



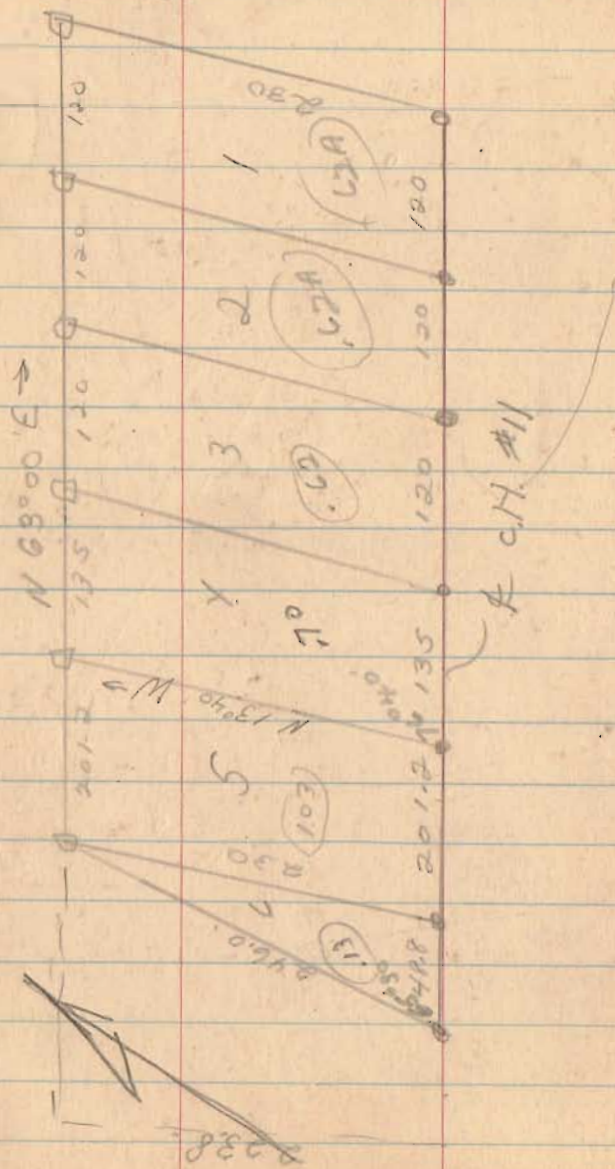
6440

INDEXED ON MAP

305
 481

 78.6 →

Basore
 Soil - T2, R14
 Between the Miami River
 Pleasant Twp., Logan, Co



July 1954

57

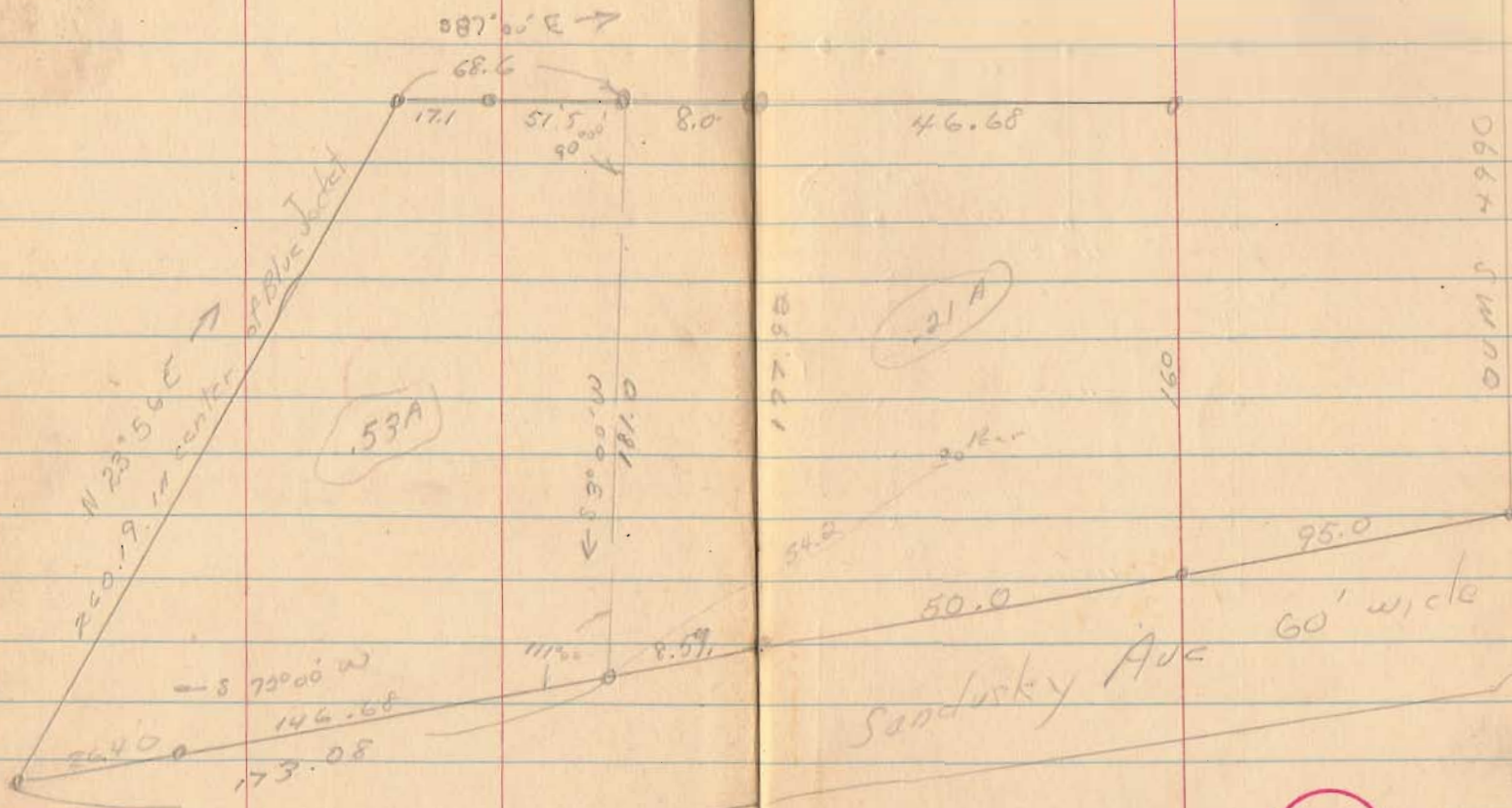
5399

INDEXED ON MAP

Fred Coy
 O.U.M.S. 4990
 Beikfontaine, O.

Aug 7, 54

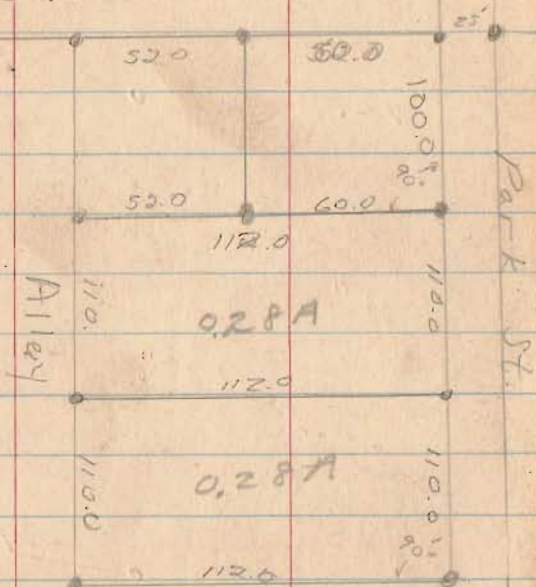
58



INDEXED ON MAP

hauteback
Bellefontaine

Spring Ave



Nov. 54

59

2984

INDEXED ON MAP

O.V.M.S. Perry Twp

Mrs. Hellen Pear

East Liberty

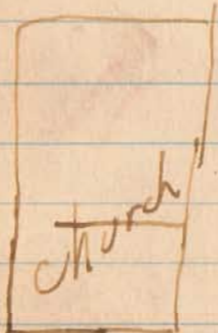
R.R.

Temperance

Foundry

N 56° 30' E

18.0



85'

97° 15'

860

Corner
Fence
post

0.29 A

800'

87° 15'

122.5

810'

90° 00'

Hub in fence

12-21-54

60

90° 44'

90°

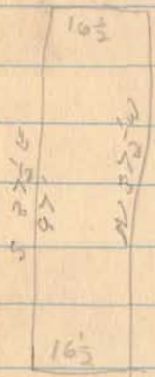
87° 13'

93° 16'

262° 56'

95° 51'

770 00



1870
Elihu Embury
25 6
32 3
D. 5 3

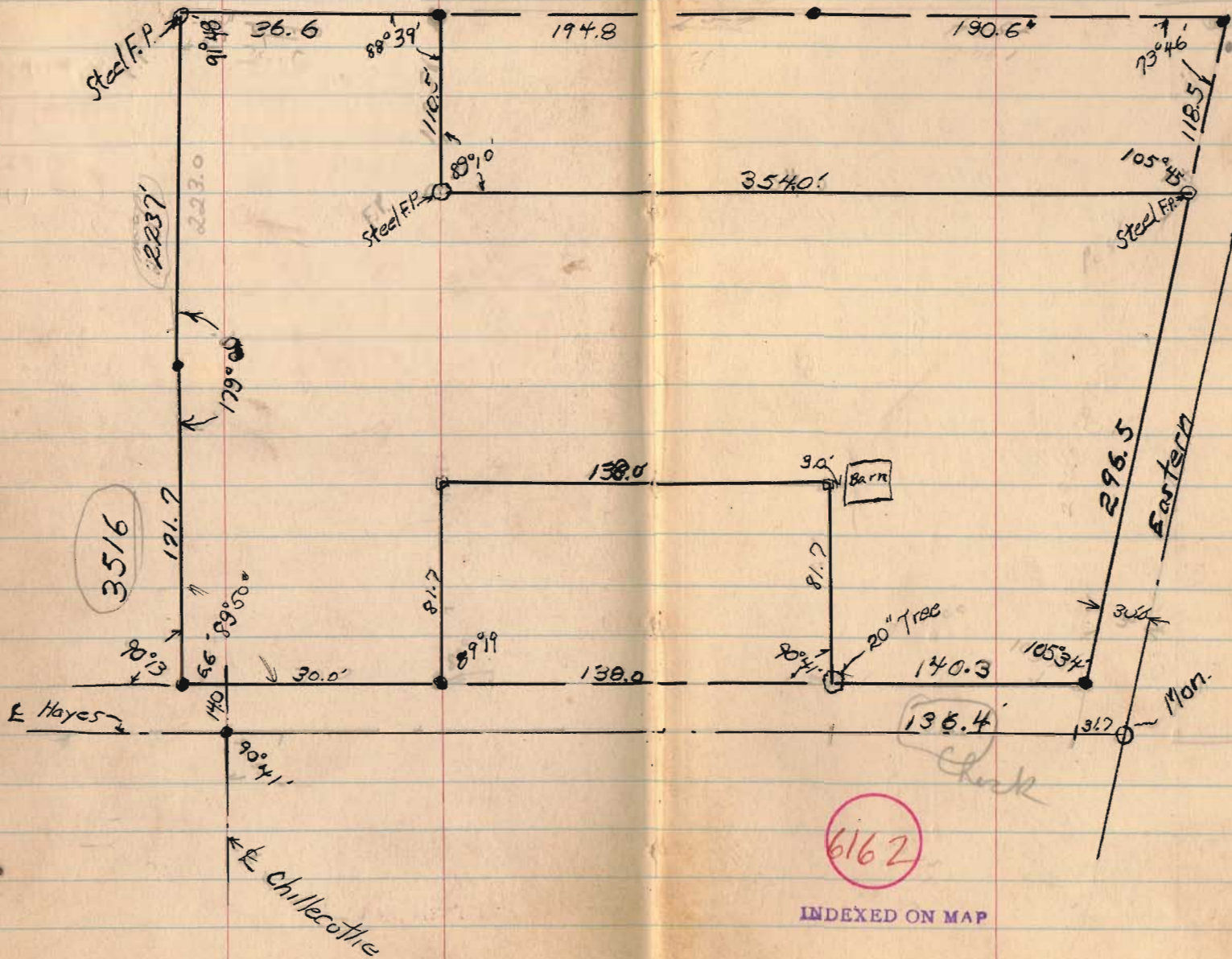
4500

INDEXED ON MAP

Frank Young
Bellefontaine, O

12-23+24-54

61

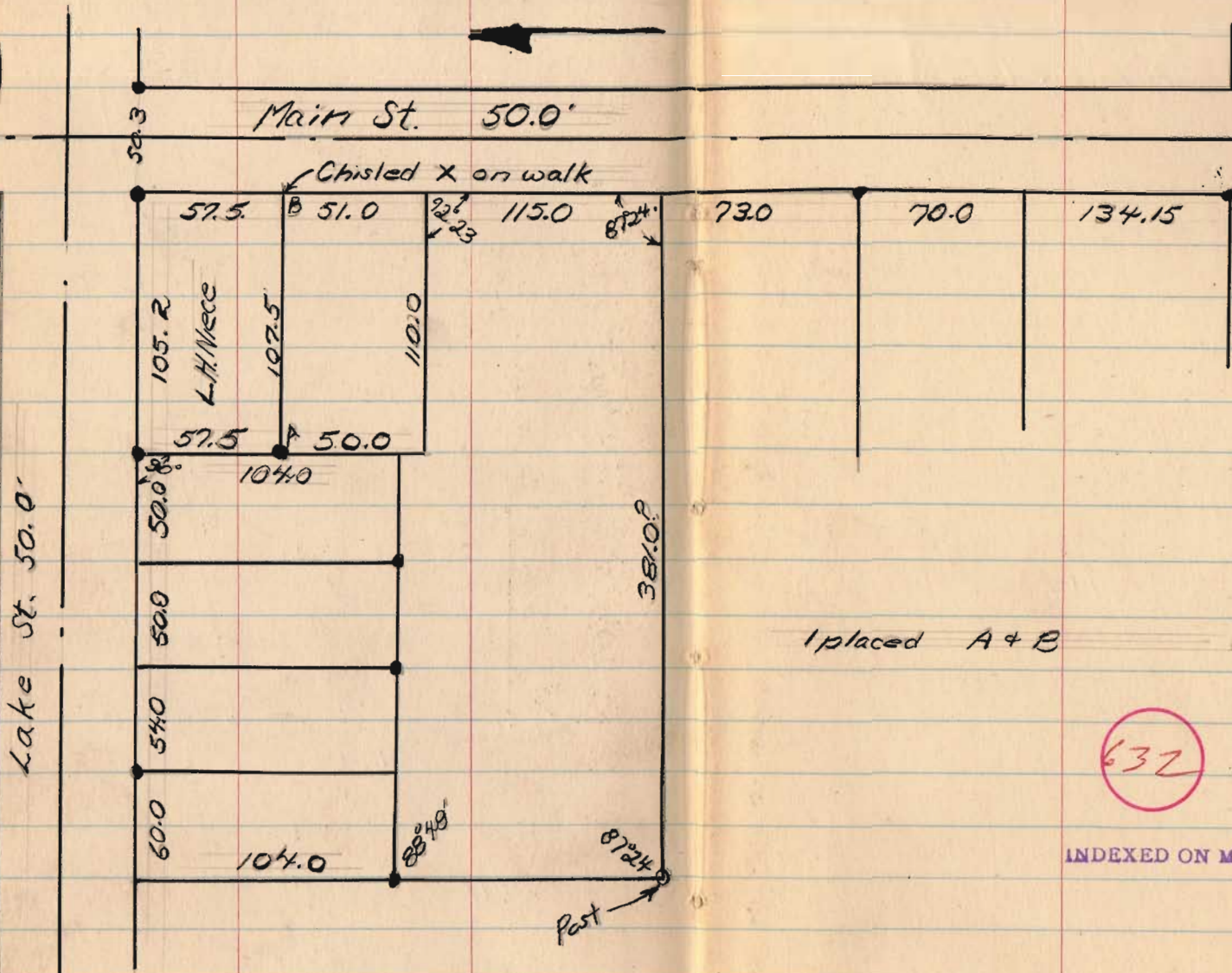


INDEXED ON MAP

L. H. Niece, Lakeview

12-30-54

62



I placed A & B

632

INDEXED ON MAP

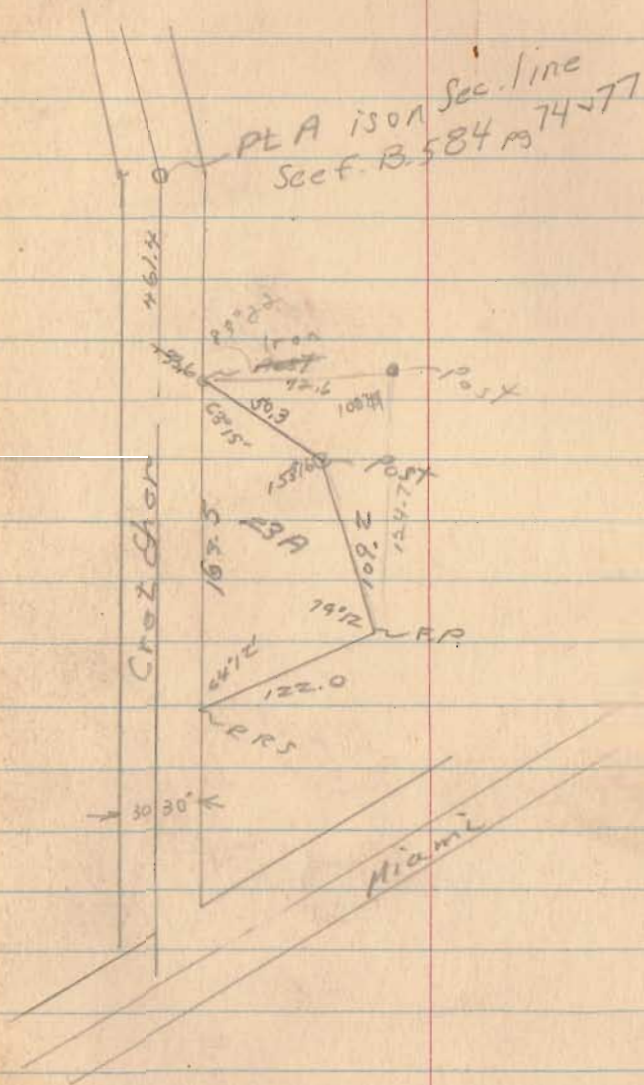
Byron F. Loffer
From 1.47A
Miami Twp.
Degraft, O
Sec 7, T-2, R-14

May 17, 52

63

3118

INDEXED ON MAP



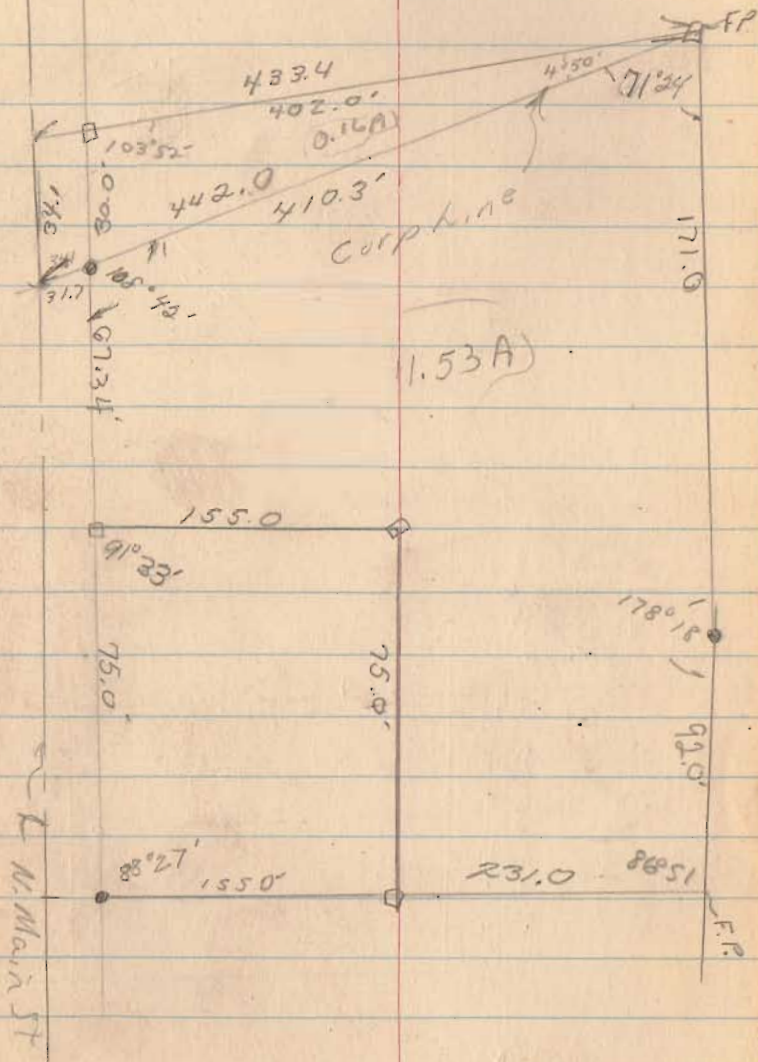
Smith Survey
N. Main
Bellefontaine, O

May, 54

C5

4888

INDEXED ON MAP



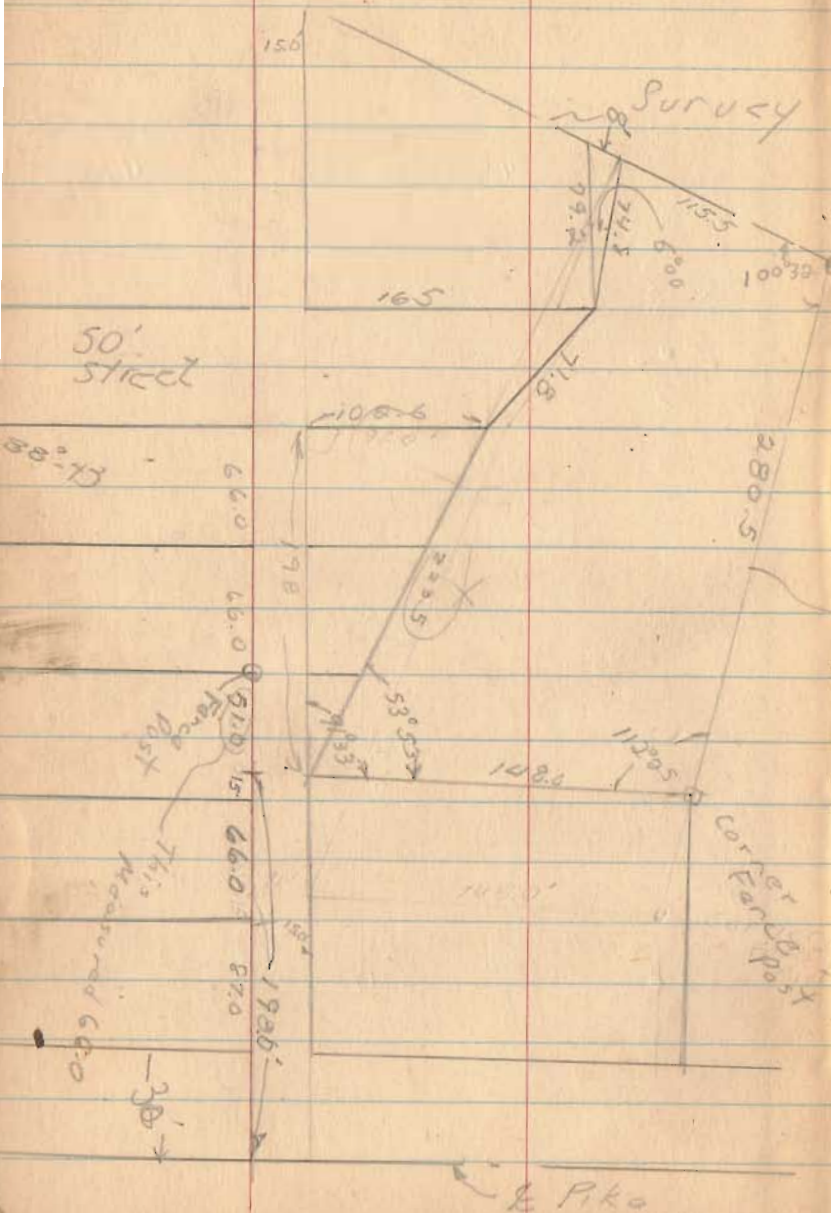
Motor
Rush Creek
Harper

Nov - 1951

66

Survey

Line 9885 - East Side



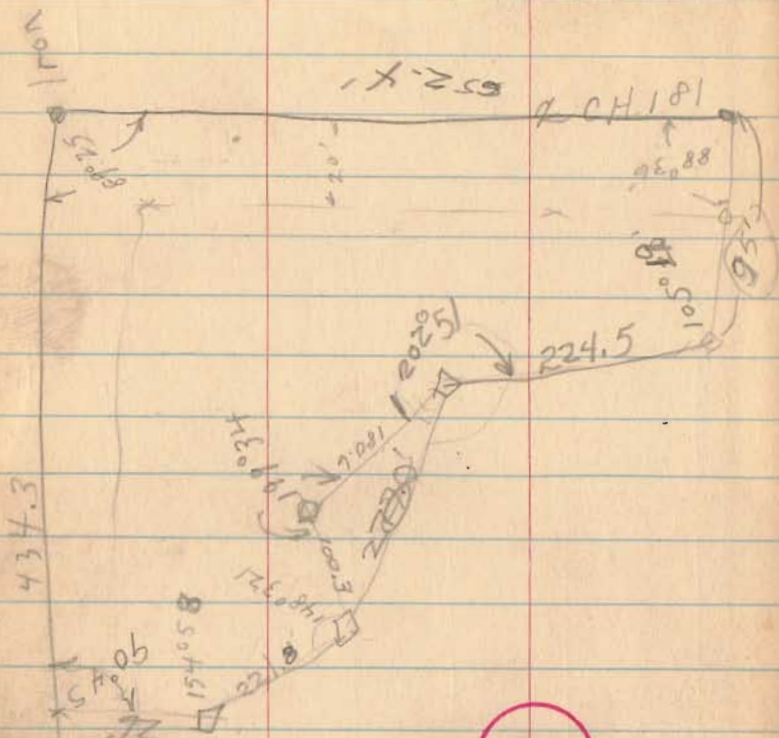
3399

INDEXED ON MAP

SEE PAGE 73

old fence Row in evident

May 1952 68



2875

INDEXED ON MAP

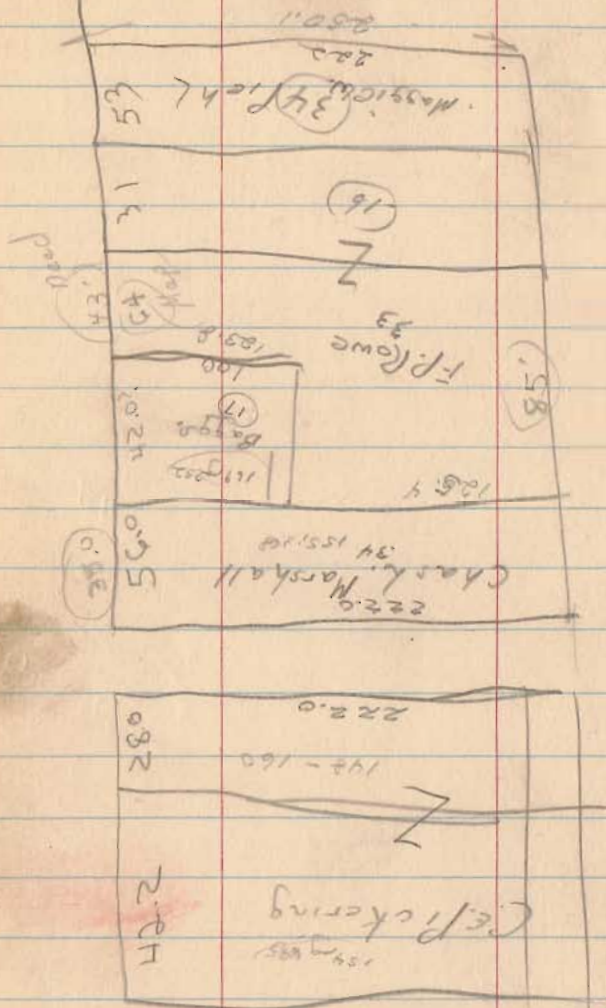
check

Taken from a
63. Sacre wood

110
1000

88° 36
 89° 25
 90° 45
 105° 51
 202° 34
 199° 28
 148° 5
 154
 1080

Lake View

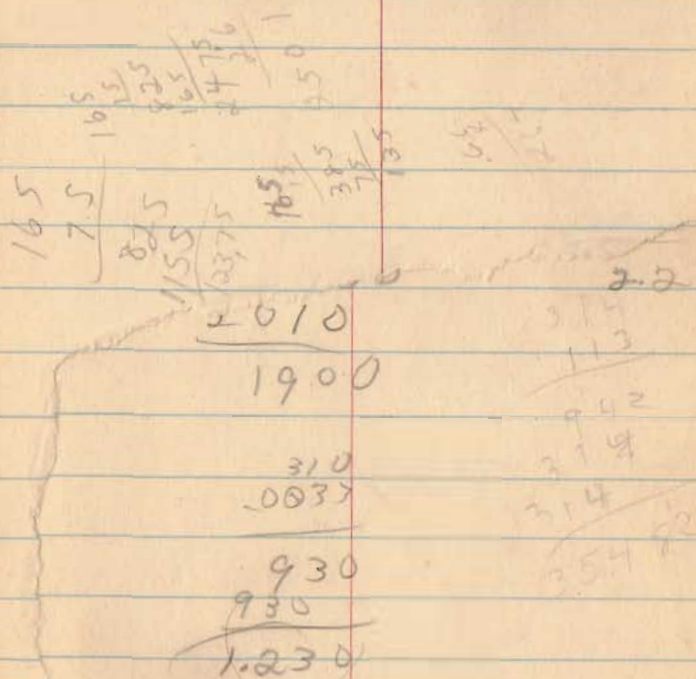


4297

INDEXED ON MAE

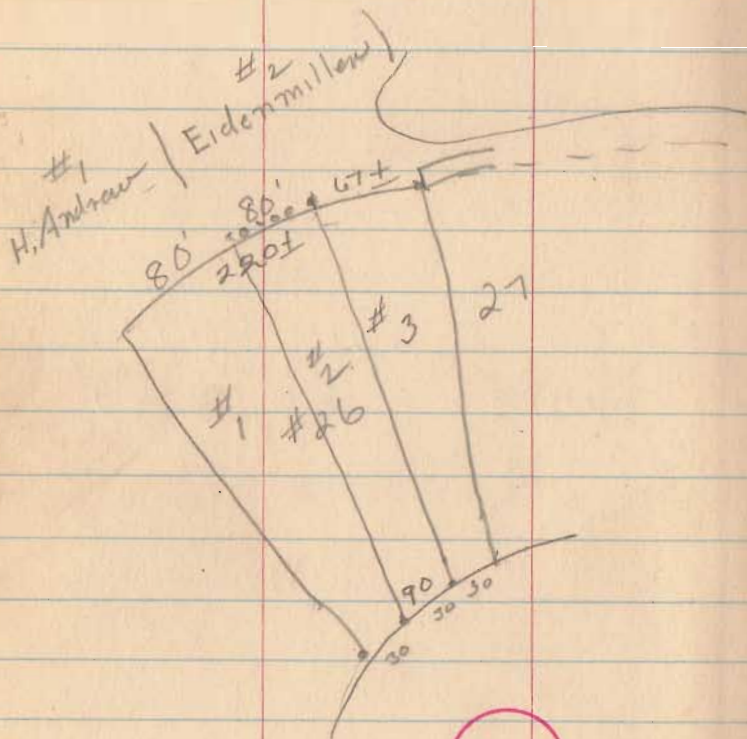
Stukas Twp.

Sec 34, T-6, R-8



677

Lot # 10 - H. Johnson



2024

INDEXED ON MAP

$$\frac{288}{\sin 76^{\circ}30'} = \frac{184.7}{\sin x}$$

$$\begin{array}{r} .9724 \\ \underline{182} \\ 19448 \\ 77792 \\ \underline{9724} \\ 17960228 \end{array} \quad \begin{array}{r} 215^{\circ}25' \\ 38^{\circ}35' \\ \hline 254 \end{array} \quad \begin{array}{r} .9724 \\ 184.7 \\ \hline 68068 \\ 38896 \\ 77792 \\ \underline{9724} \\ 17960228 \end{array}$$

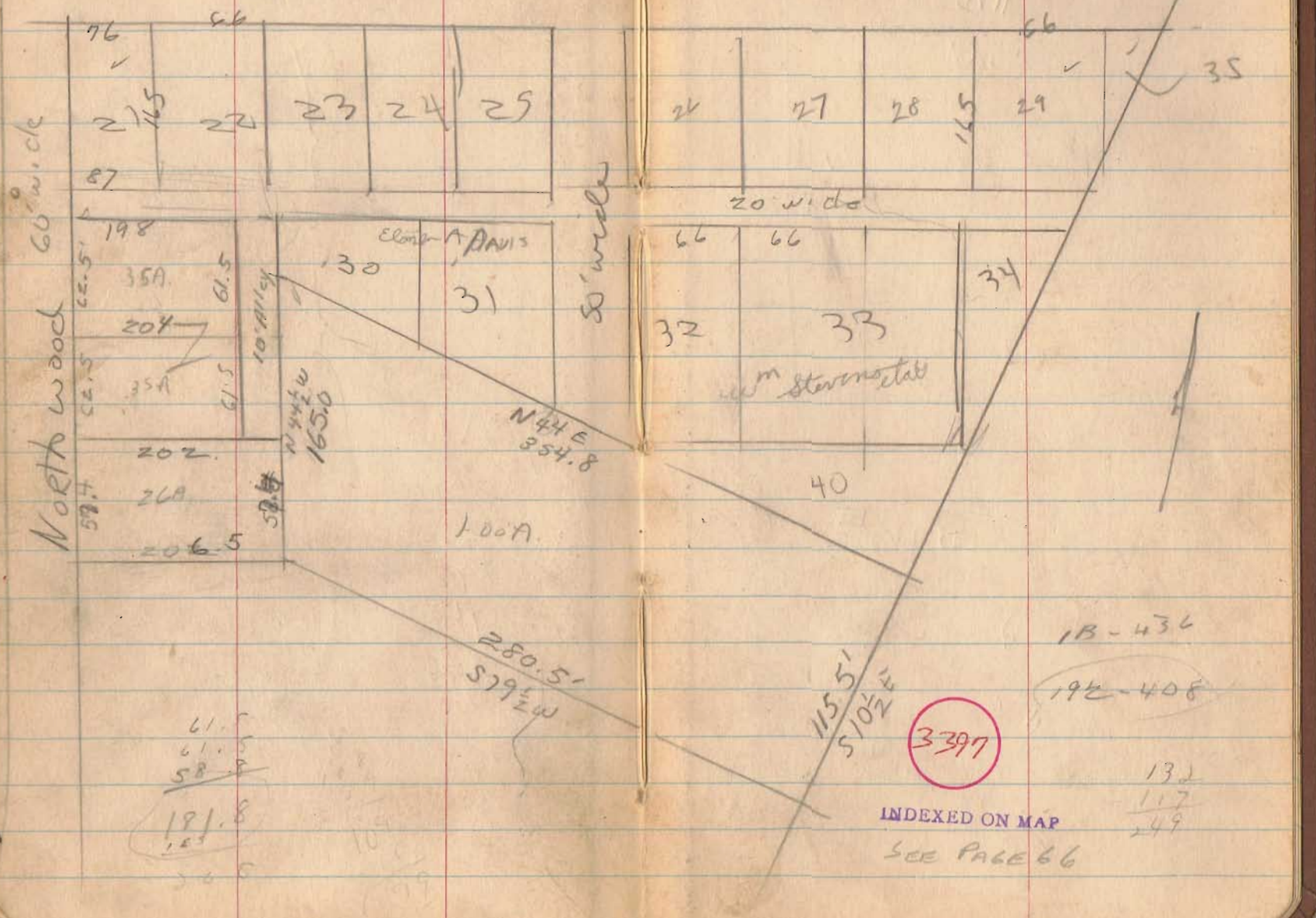
.6271

$$\begin{array}{r} .6199 \\ 288 \overline{) 1769768} \\ \underline{1718} \\ 517 \\ \underline{288} \\ 2296 \\ \underline{2066} \\ 2800 \end{array} \quad \begin{array}{r} 288 \overline{) 17960228} \\ \underline{1718} \\ 780 \\ \underline{576} \\ 2042 \\ \underline{2066} \\ 360 \end{array} \quad \begin{array}{l} 38^{\circ}50' \\ 38^{\circ}40' \\ 38^{\circ}30' \\ 38^{\circ}35' \end{array}$$

HARPER

0 V M S 9885

CC C - 1st - R R 150' wide



North wood 60' wide

50' wide

Elmer A. DAVIS

Wm. Sternosta

3397

INDEXED ON MAP
SEE PAGE 66

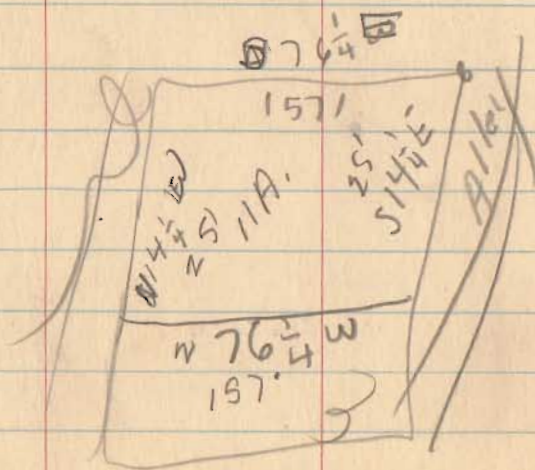
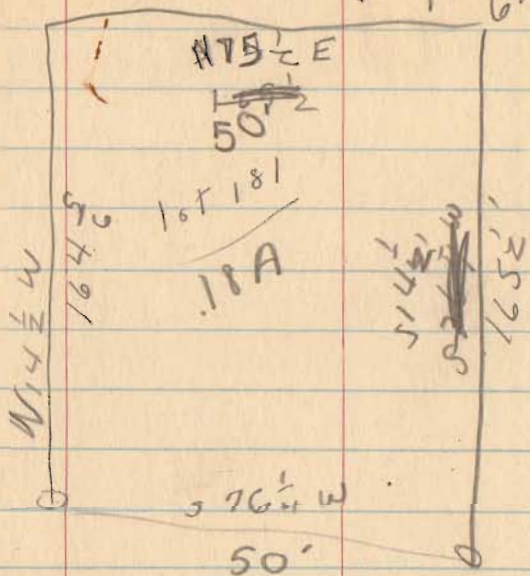
61.5
61.5
58.0
191.8
1.25
30.0

13-436
192-408
132
117
249

Edith Miller

1/2 A.S.
77 S^W
6155

74



5246

INDEXED ON MAP

0845
 755
 2045
 6795

150.32

76
 150
 150
 150

J. E. Manahan - Walter A. Cickles

June 24, 1939

Vol. 162, 1947

Dora B. "

Jess R. Bennett

State 60'
 N 37°33' E

Recorded Nov. 4, 1930
 Vol #144, Page 271

3355

SEE PAGE 6

INDEXED ON MAP

164
 151
 151
 151

