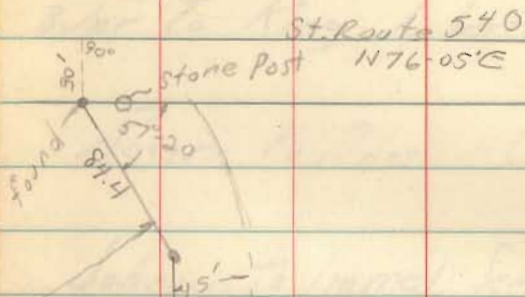


ZANG Caverns
Jefferson Twp



- 84.4 N 46-35' W • found
147°-50' RT
- 32.3 N 14-25' W • Placed
169°-35' RT
- 100.0 Ch N 30-00' W • found
156°-28' RT
- 100.0 Ch N 20-32' E • Placed
169°-02' RT
- 281.2 N 31-30' E • found
138°-30' LT
- 120.8 N 10-00' W • found
173°-00' LT
- 132.0 N 17-00' W • found
168°-15' LT
- 88.0 N 28-45' W • found
170°-38' LT
- 107.3 N 38-07' W • found
98°-02' RT
- 167.0 N 43-45' E • found
103°-41' LT
- 181.0 N 32-34' W • found

40.76

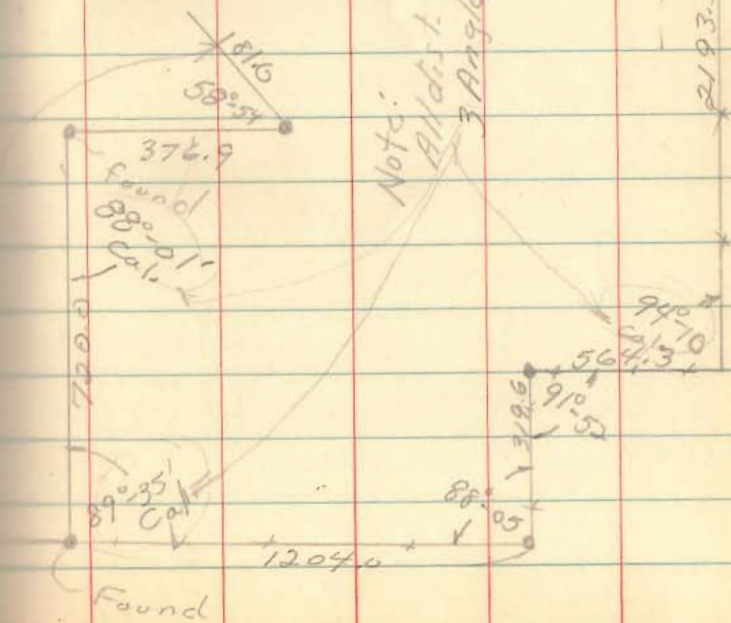
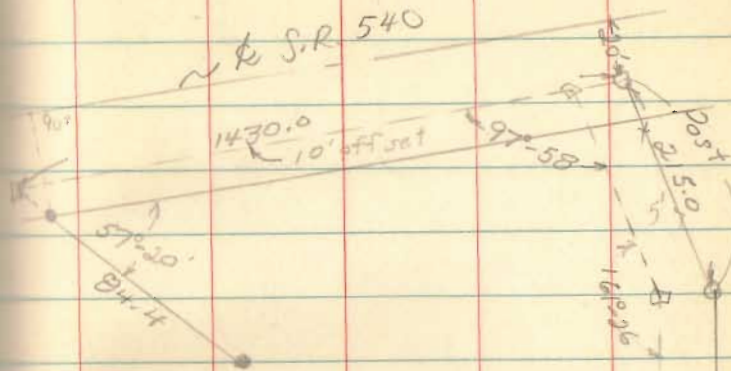
INDEXED ON MAP

All Angle Interior

do not use of 01

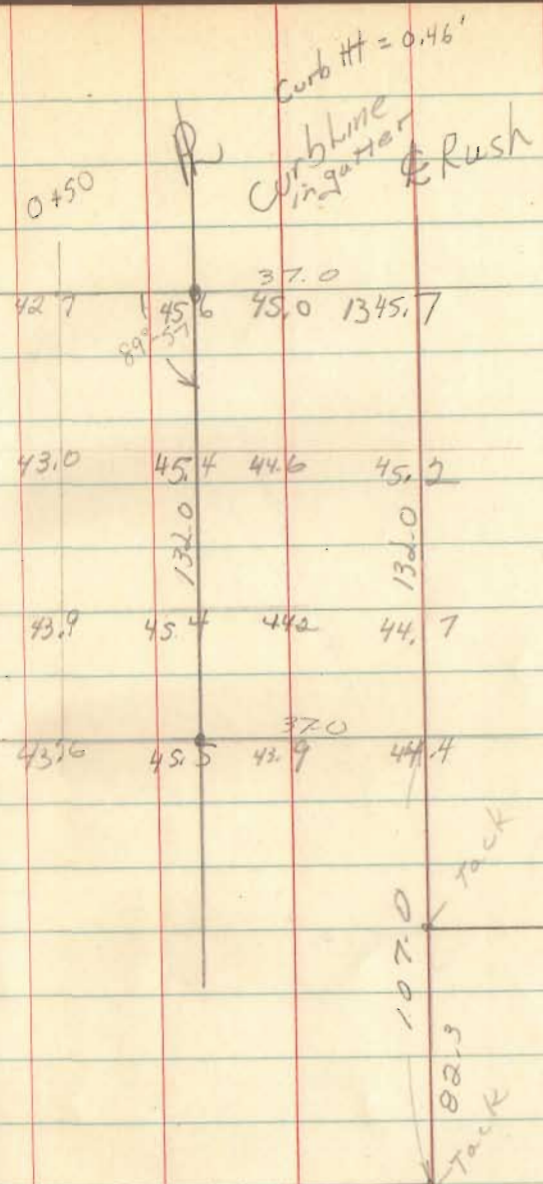
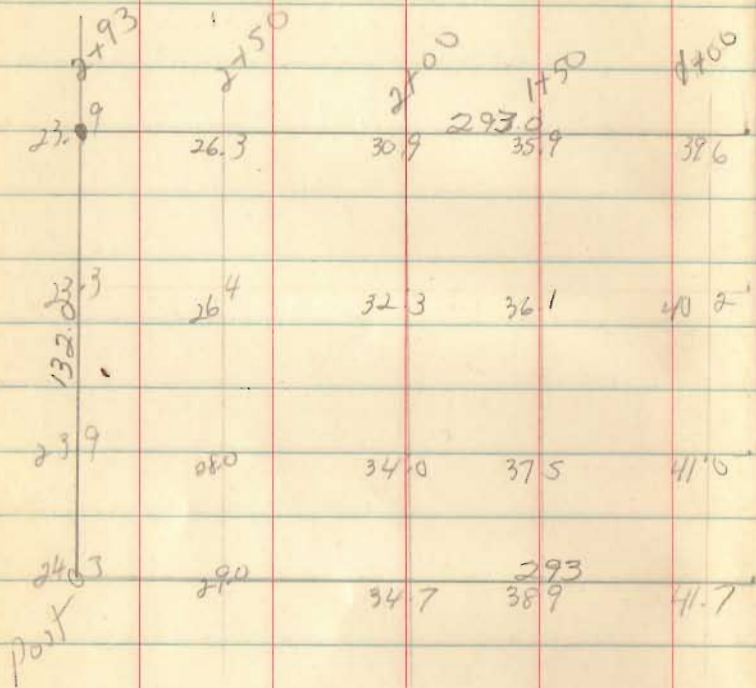
March, 67

1



Note: All dist. measured;
3 Angles Cal.

Topo for DR. Terebuk

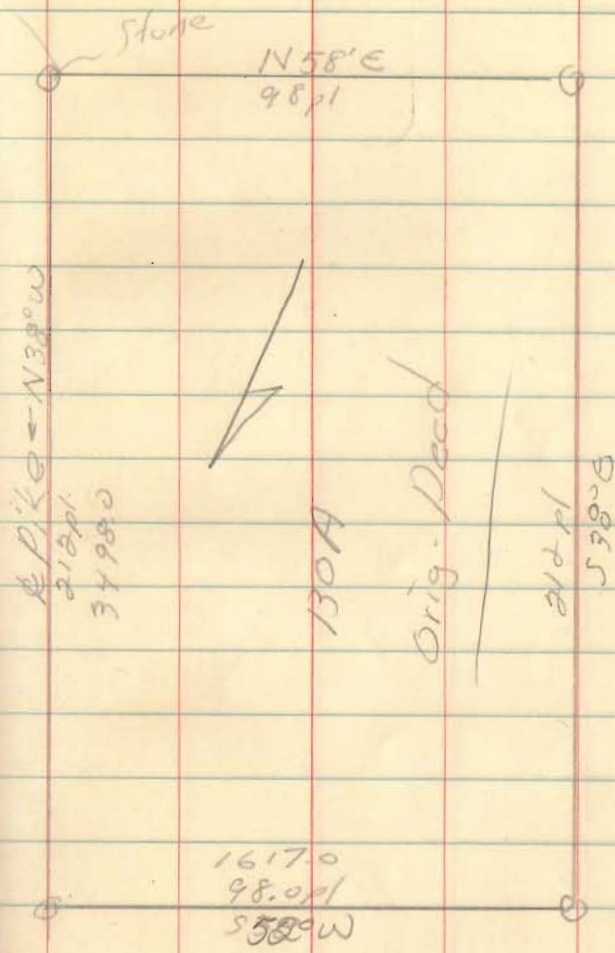
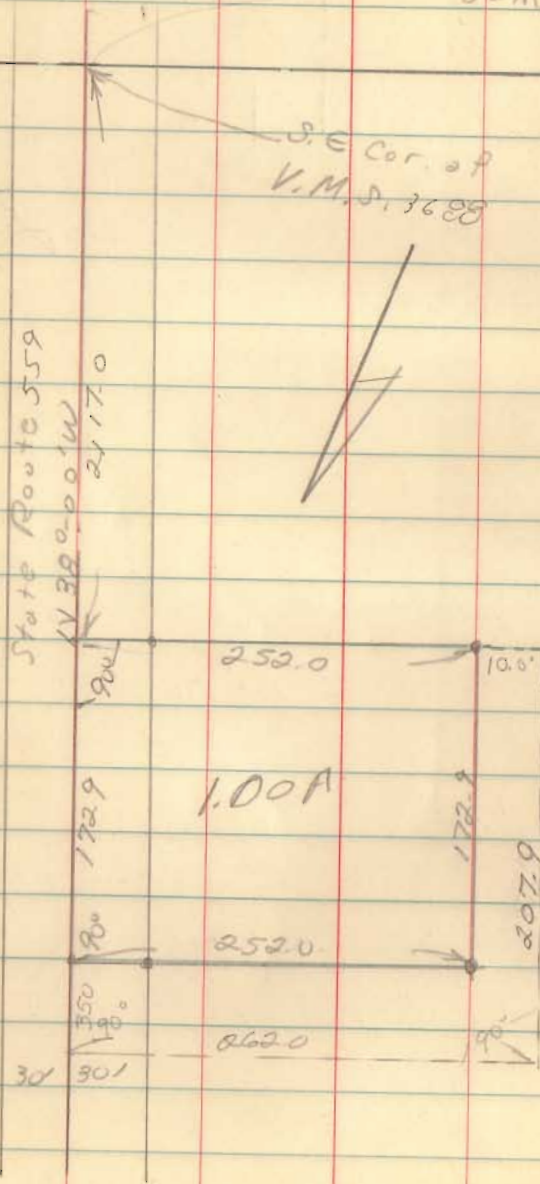


Floyd W. Simpson

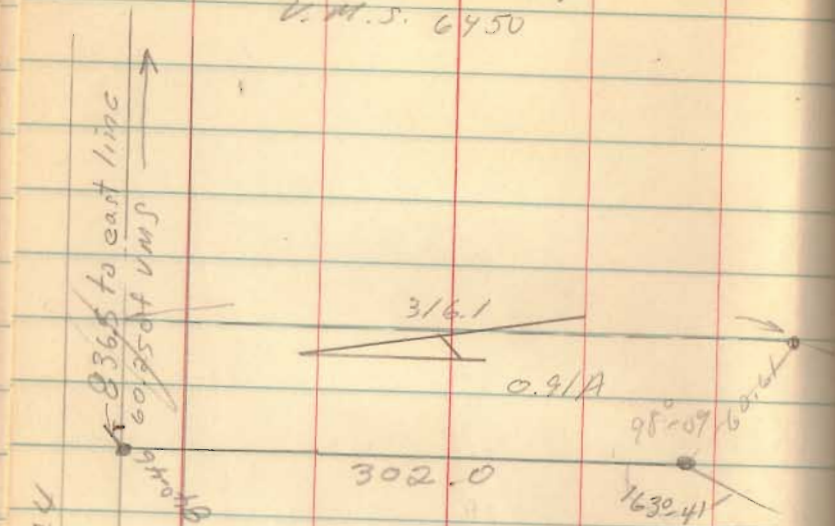
V.M.S 3688

Zane Twp.

Same

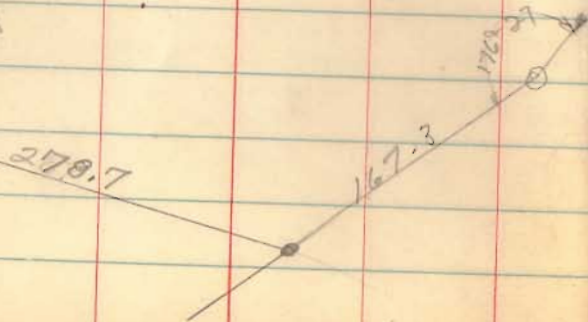


Larry Coors to Wilt
 Jefferson Twp
 U.M.S. 6450



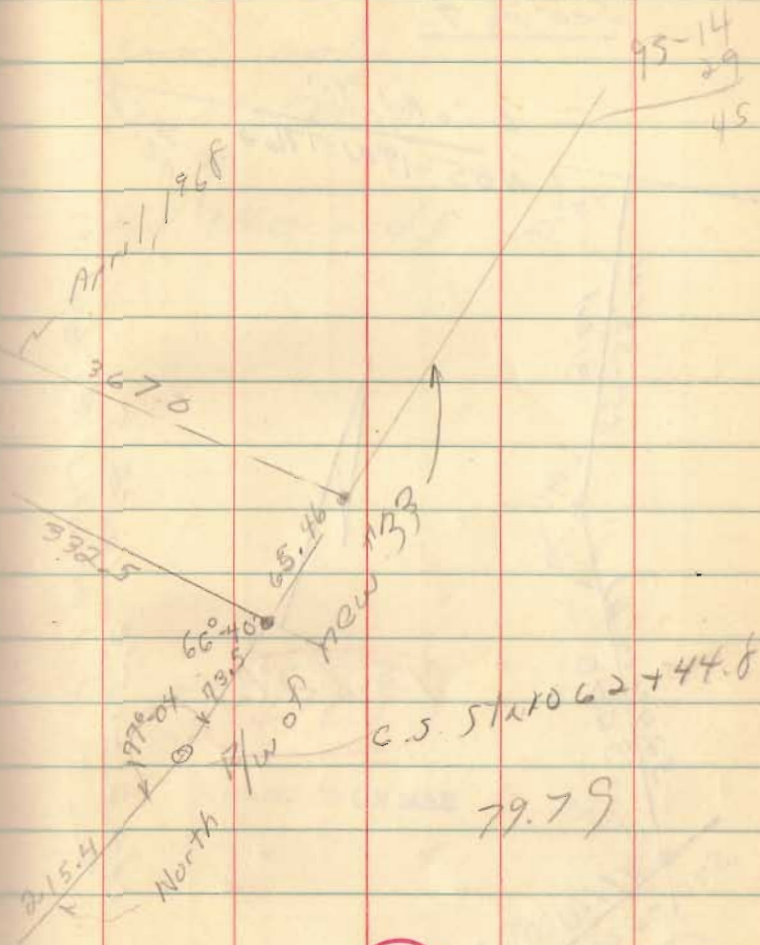
4.21A

Sec Co. Engr. F.A. 614, 13/24
 RE old C.P. 410
 370.5
 106°41'



April 8, 67

7



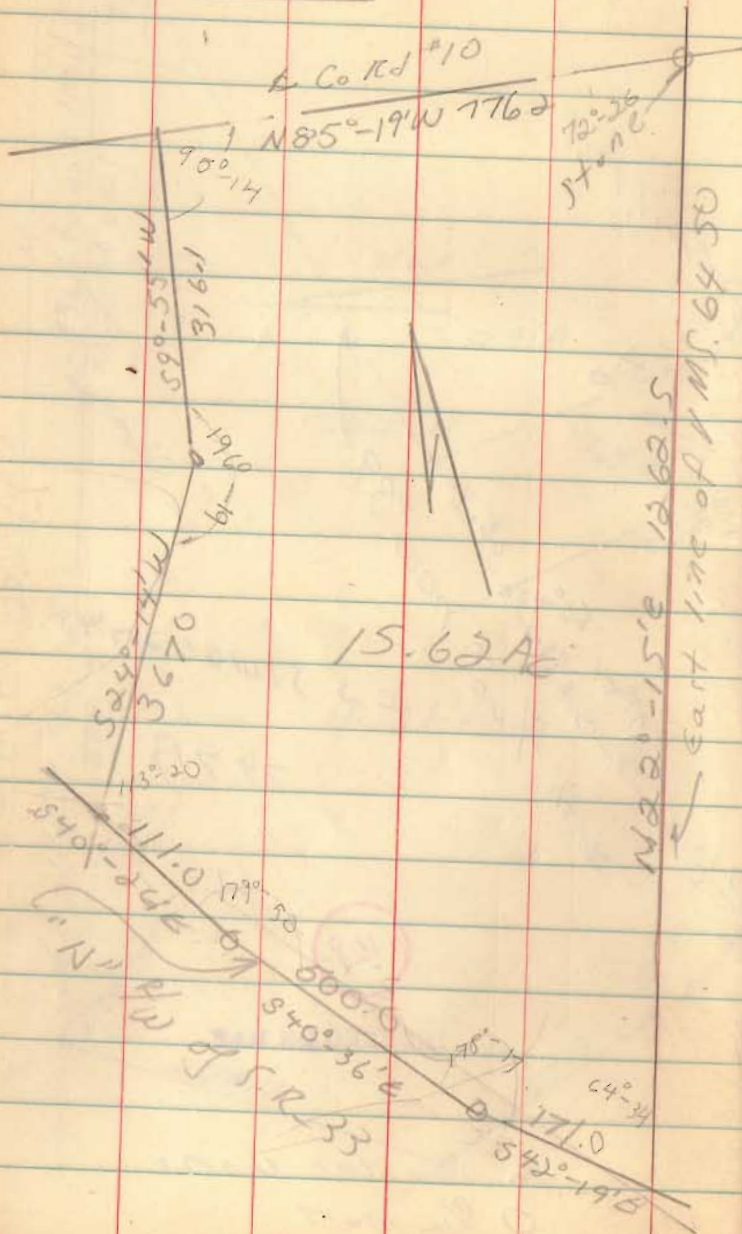
4109

INDEXED ON MAP

● denotes iron
 ○ R/W mark

Coons Desc
V.M.S. 6450

See pg 7



Jan., 70

8

Desc. only
from Deed

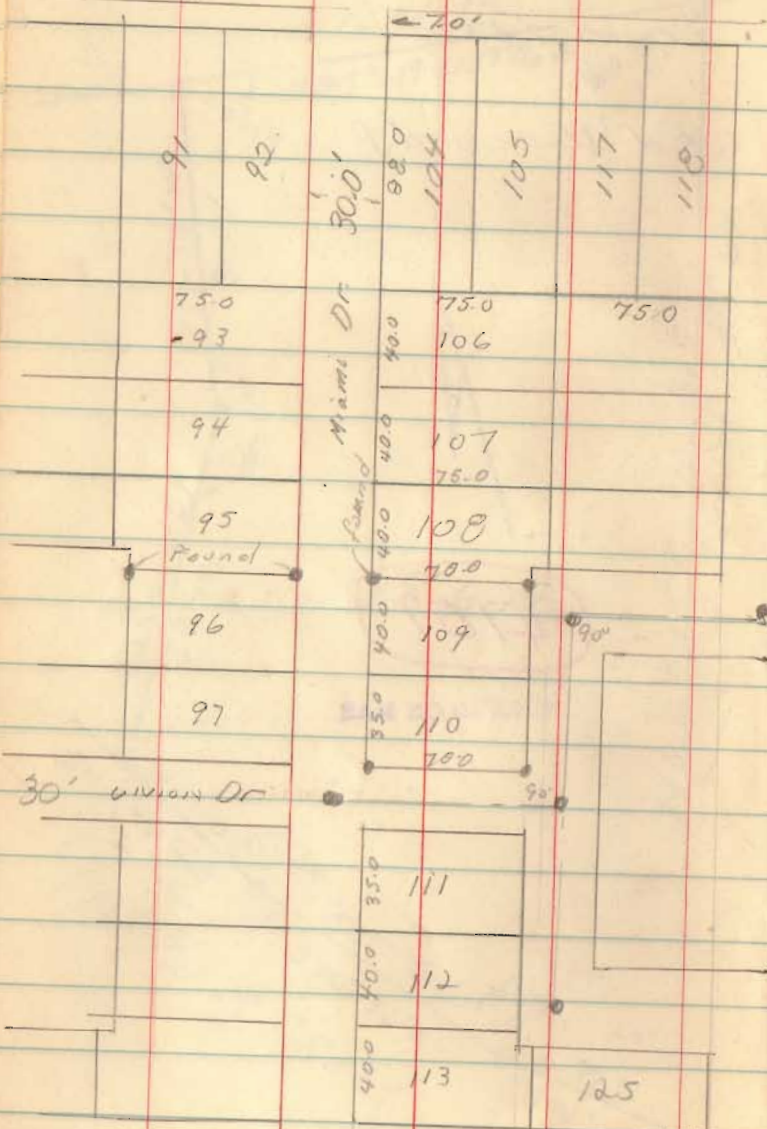
Rd. Records

4109

INDEXED ON MAP

Five Parks
Washington Twp
Lots 109 & 110

S.R. 366



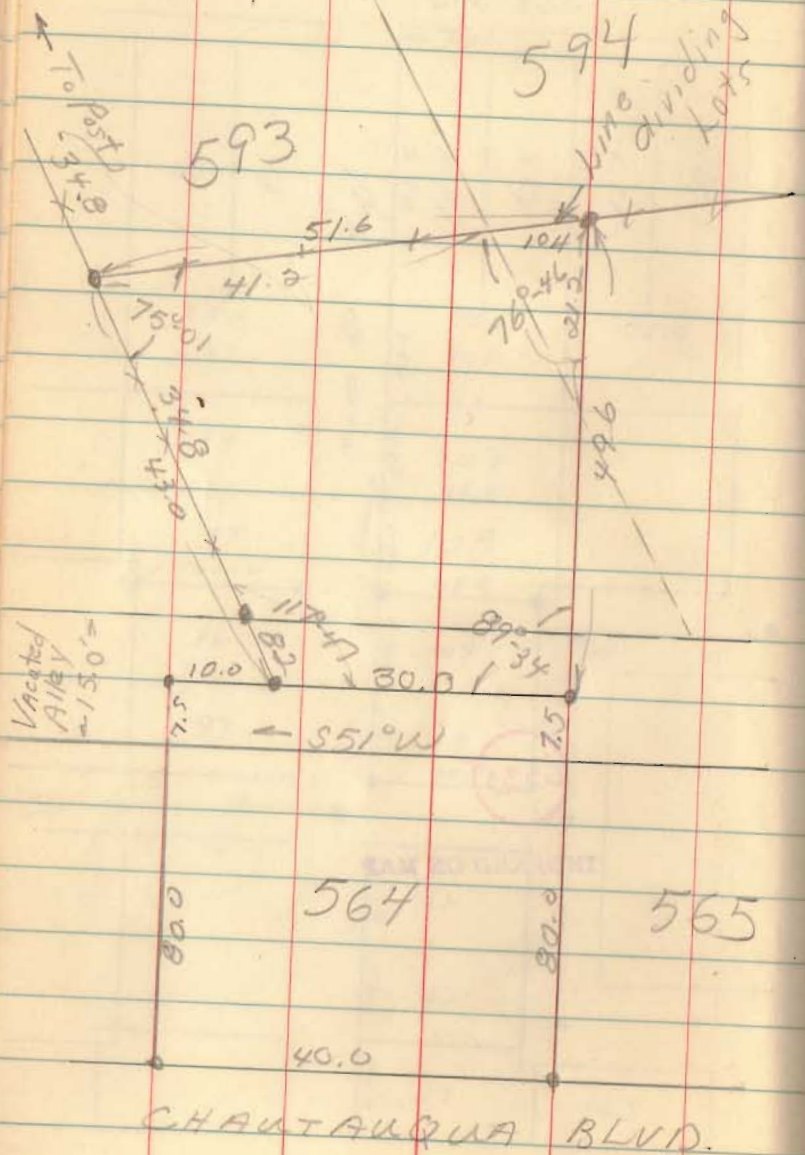
April, 1967

9

6535

INDEXED ON MAP

Warren Edwards
Orch. Isl.
Wash. Terr



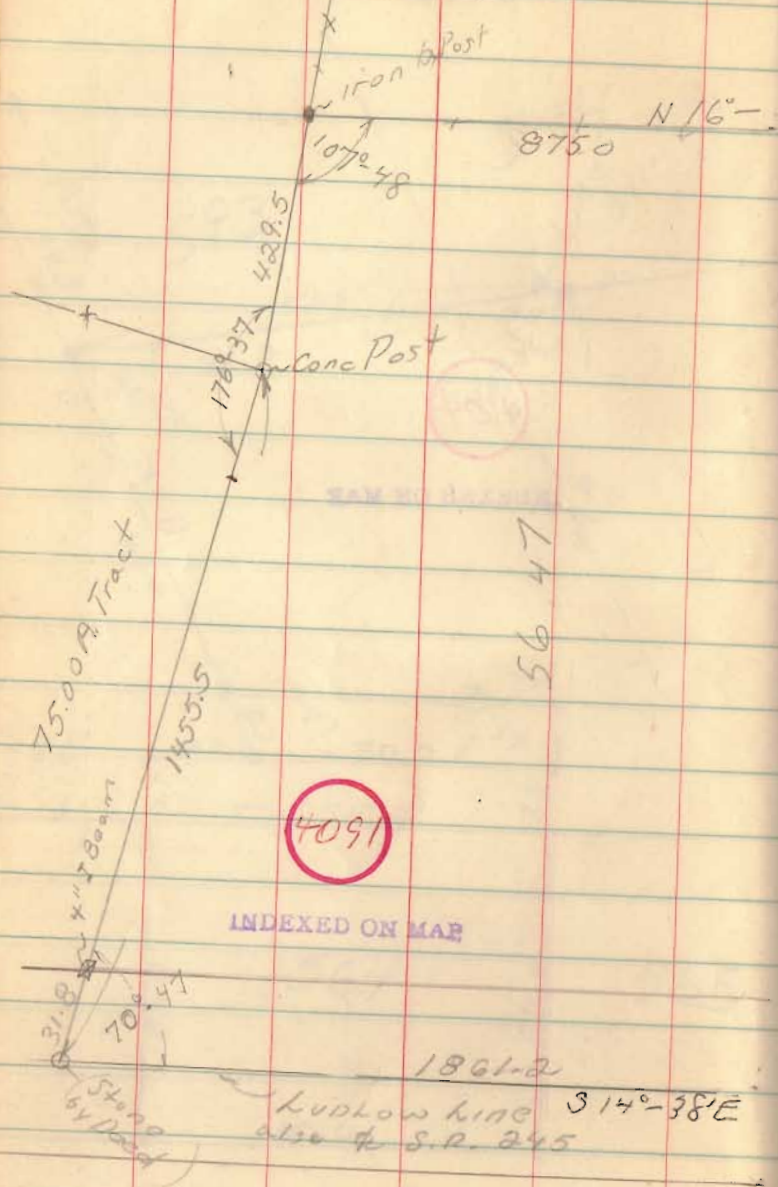
4104

INDEXED ON MAP

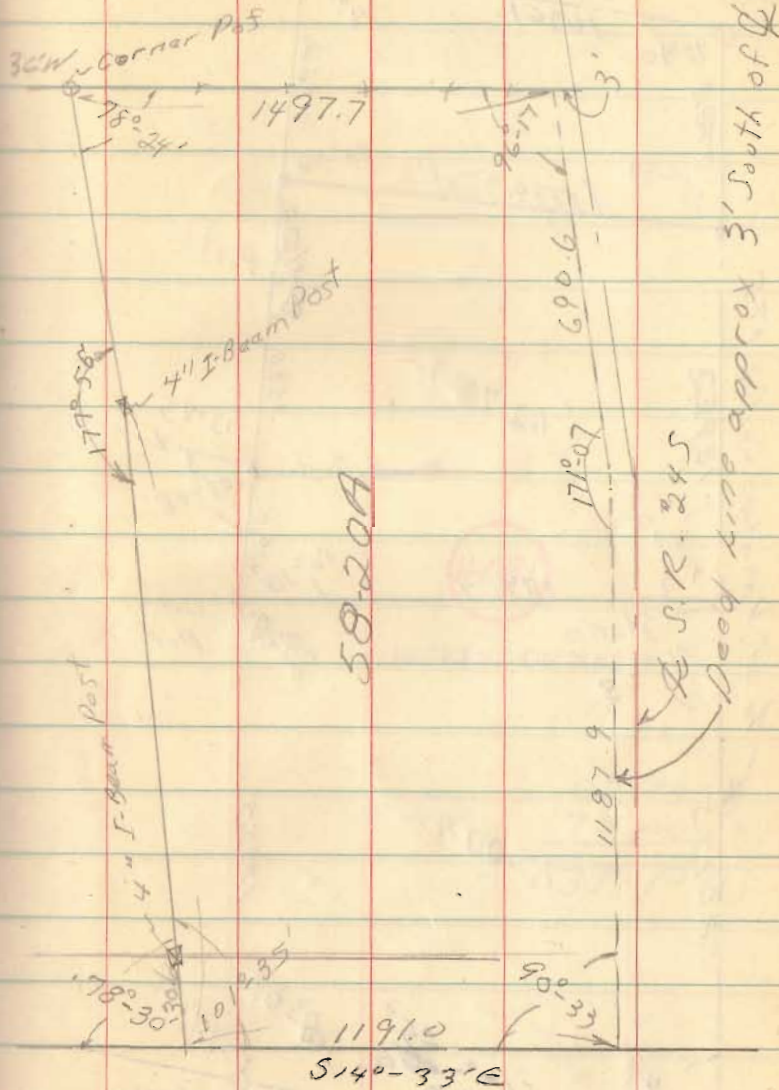
4104

INDEXED ON MAP

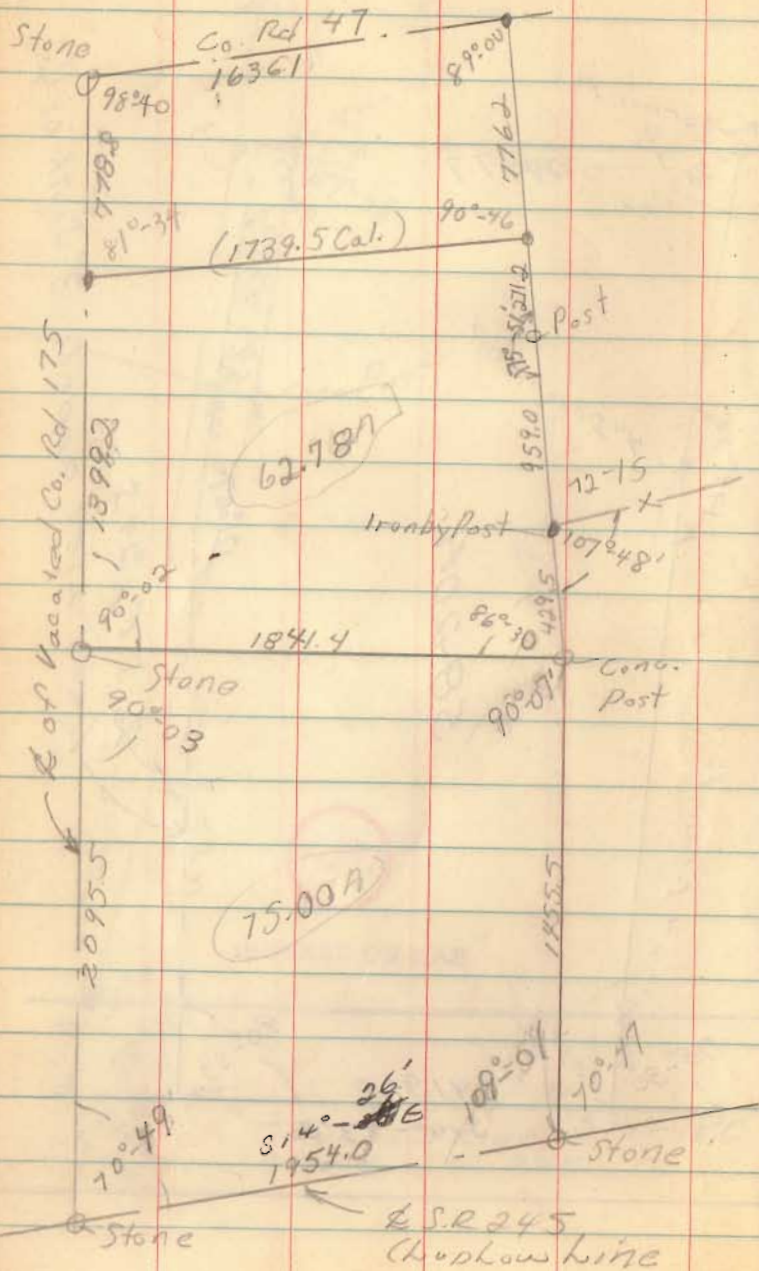
Amole Survey (by Castles)
sec. 15 & 16
Menawa Twp



April 22, 67



Part of Amole Deeds



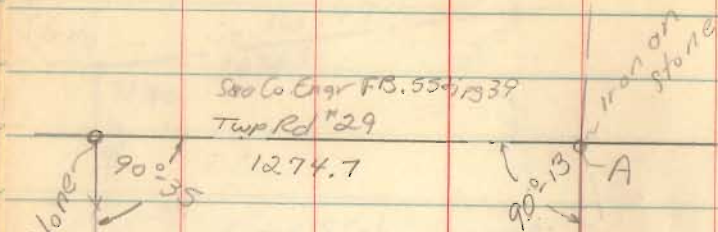
4091

INDEXED ON MAP

62.78
75.00
137.78A

(850) 163

McAllister
Middleburg



580 Co Engr F.B. 556/1339

Twp Rd #29

1274.7

Iron on Stone

1500.02

4108

Post

Middleburg
Rec. Field

191.2

B

820.7

75°-44'

60°-3'

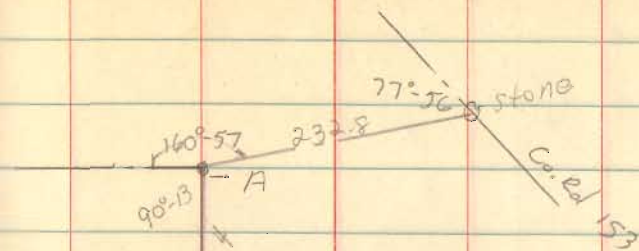
1439.7

1198.4

1198.4

44.0

150.04



13

77°-36' stone

160°-57'

232.8

Co. Rd 153

331.4

x x

770.9

Post

198.8

191.2

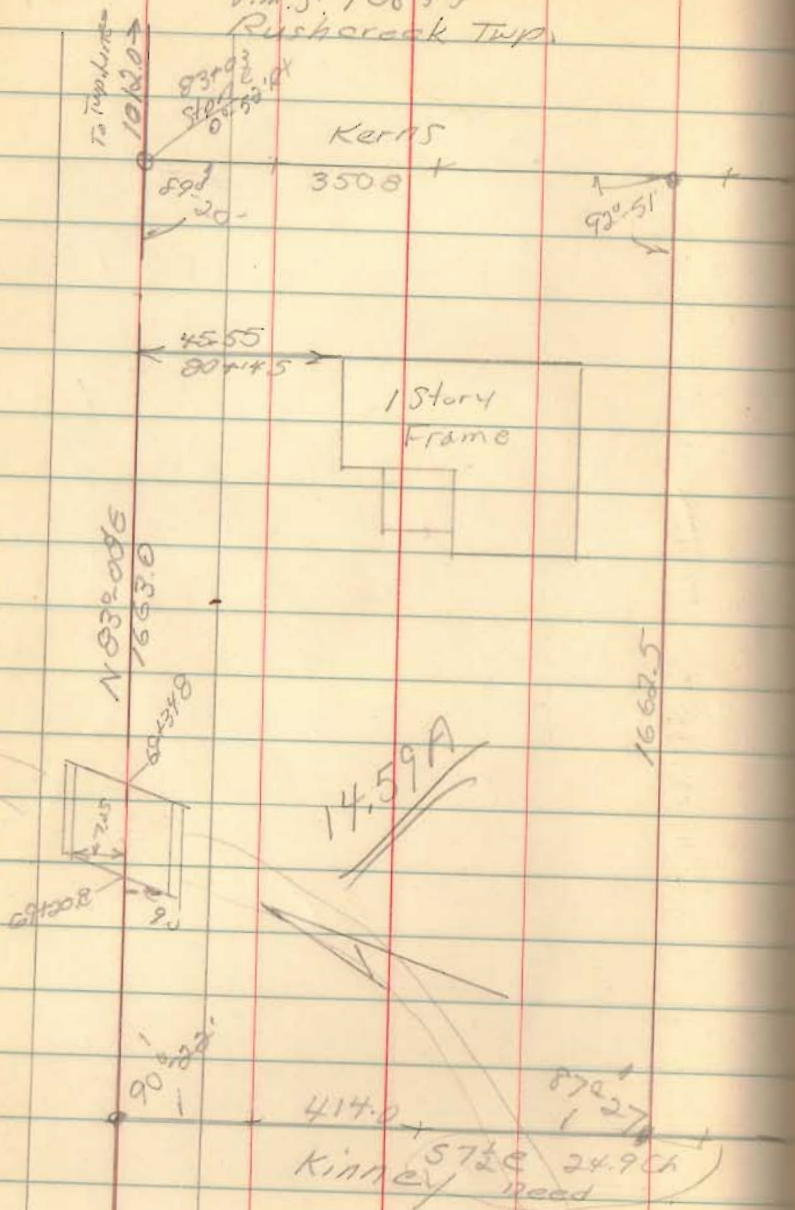
B

119.7

4108

INDEXED ON MAP

Oats Remaining
V.M.S 10837
Rushcreek Twp.



May, 1967

15

Stone

Harvey C Tennill

Months

84

82

76

68+50

62+00

Dead
25.15 ch
10837

from
62.33 Acre Tract

4094

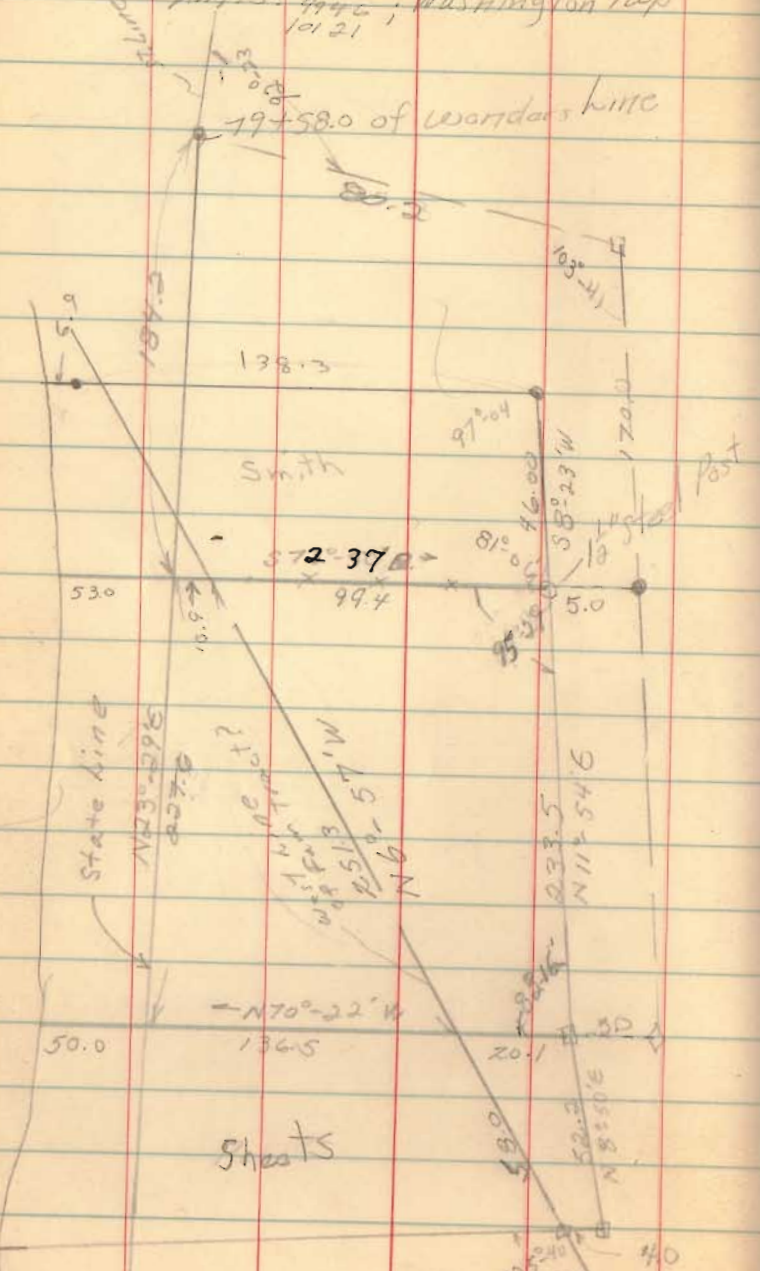
INDEXED ON MAP

Stone

Tracey

V.M.S. 9425 Washington Twp
17945
10121

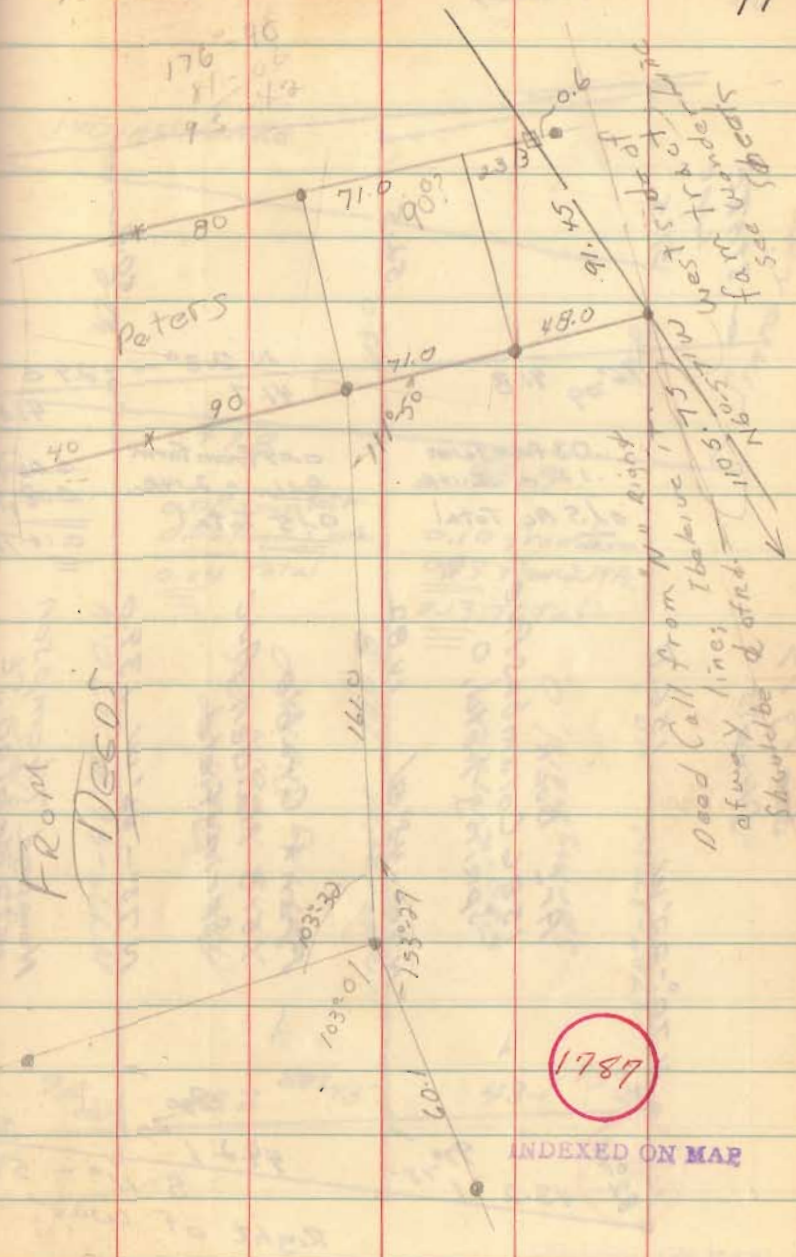
19+58.0 of Woodards line



Sheats

May, 1967

17

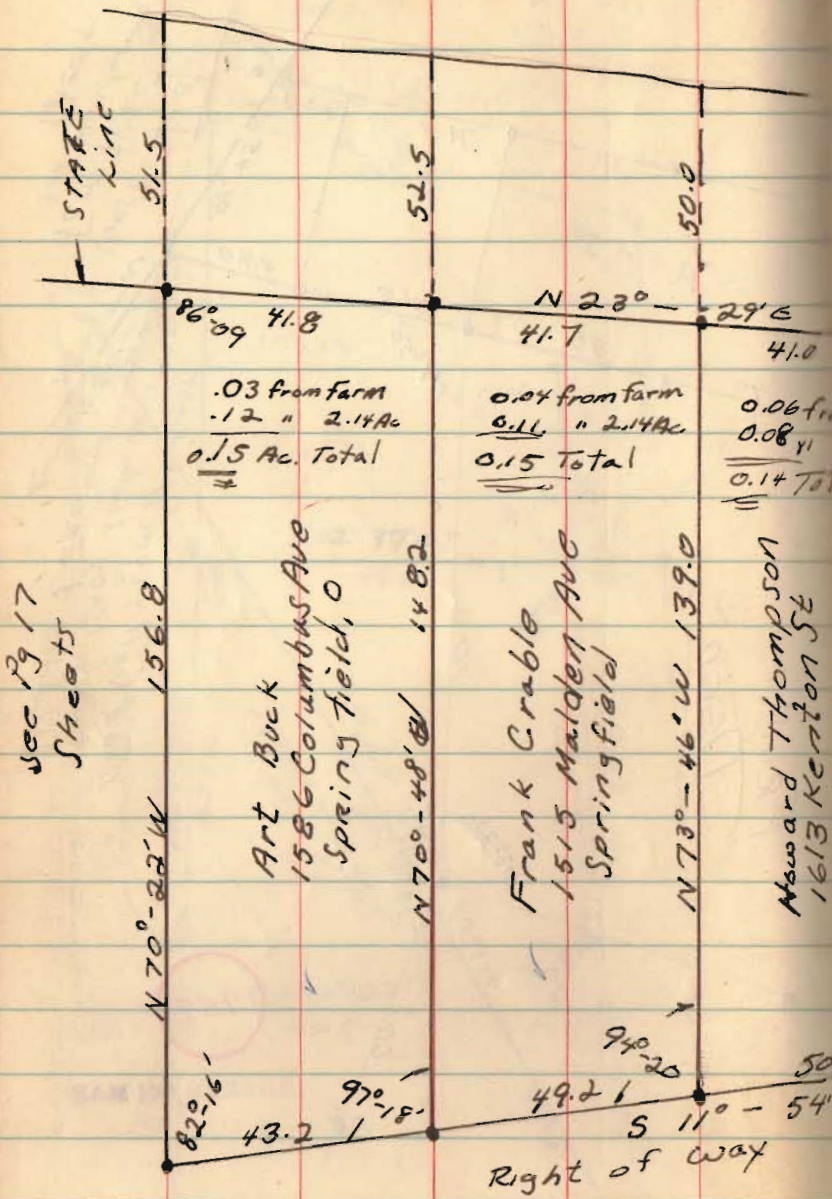


FROM
DEED

1787

INDEXED ON MAP

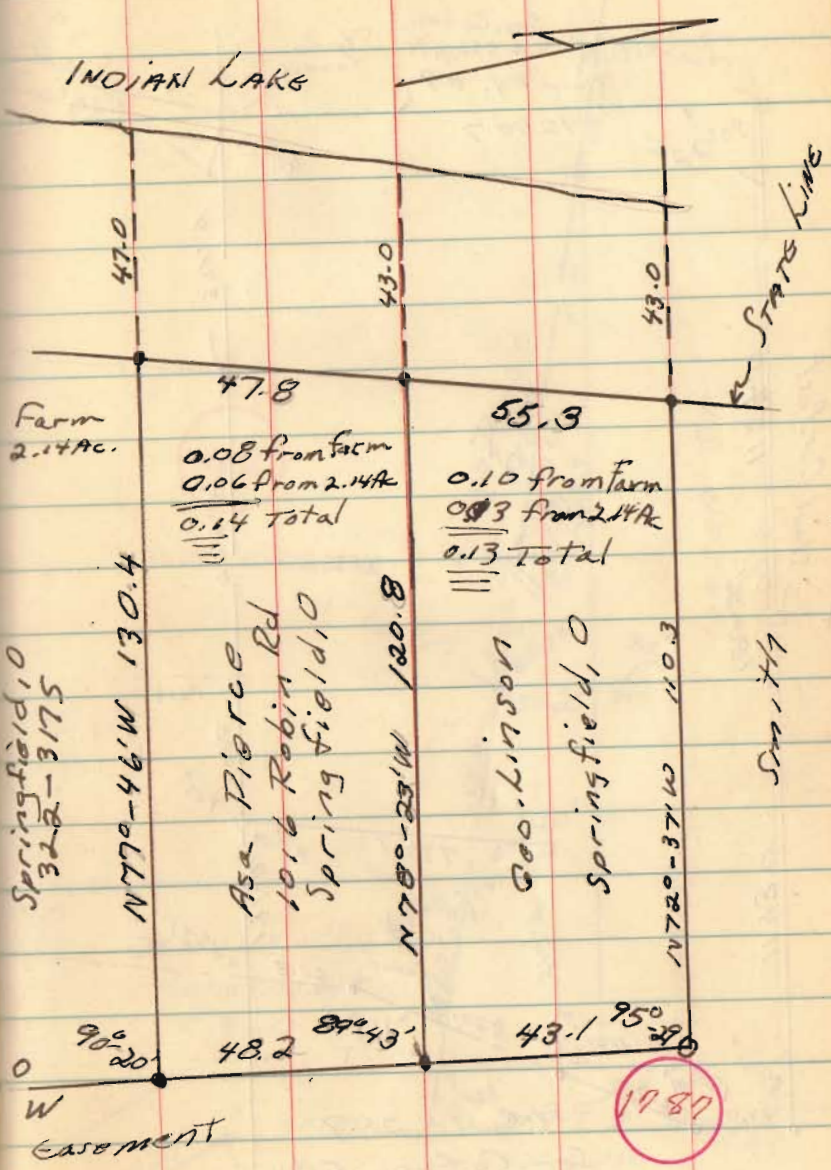
Tracey



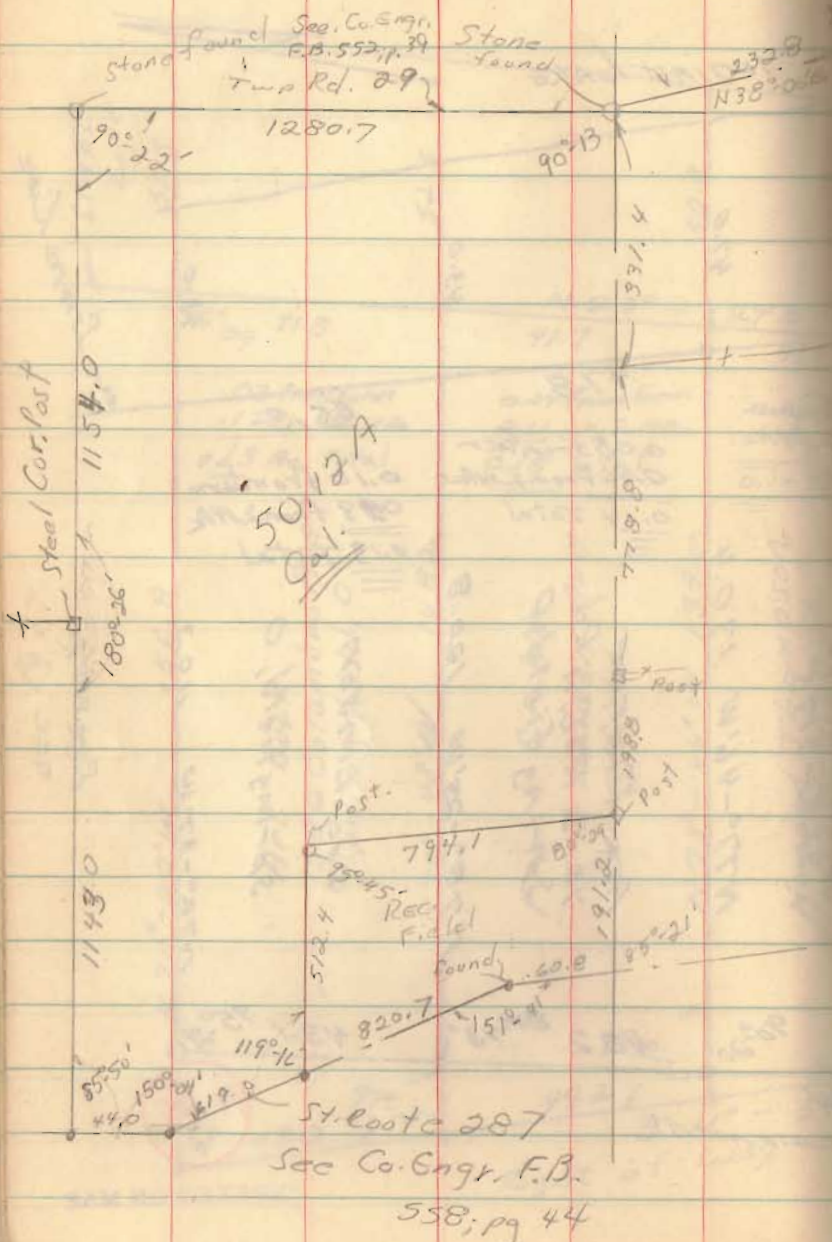
May 4, 1968

18

INDIAN LAKE

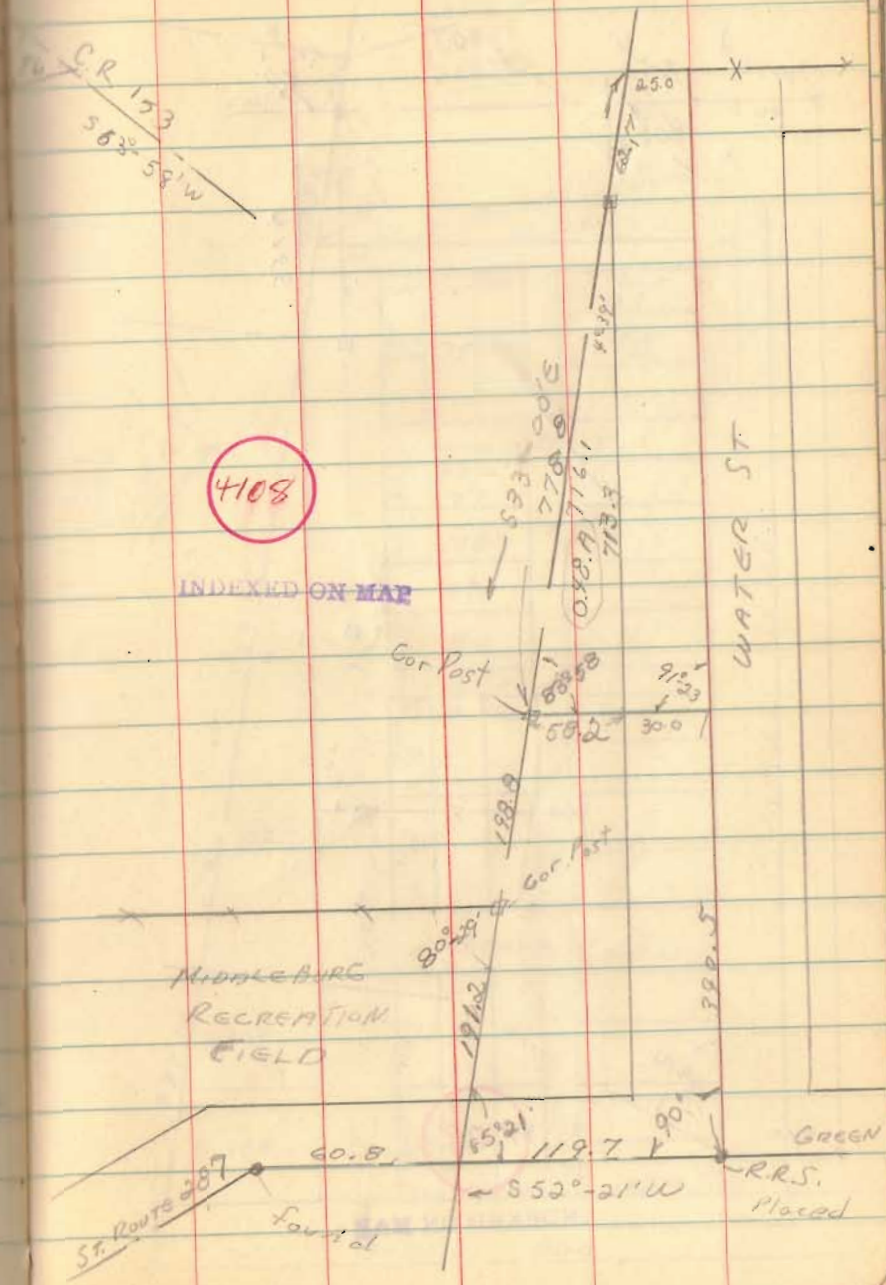


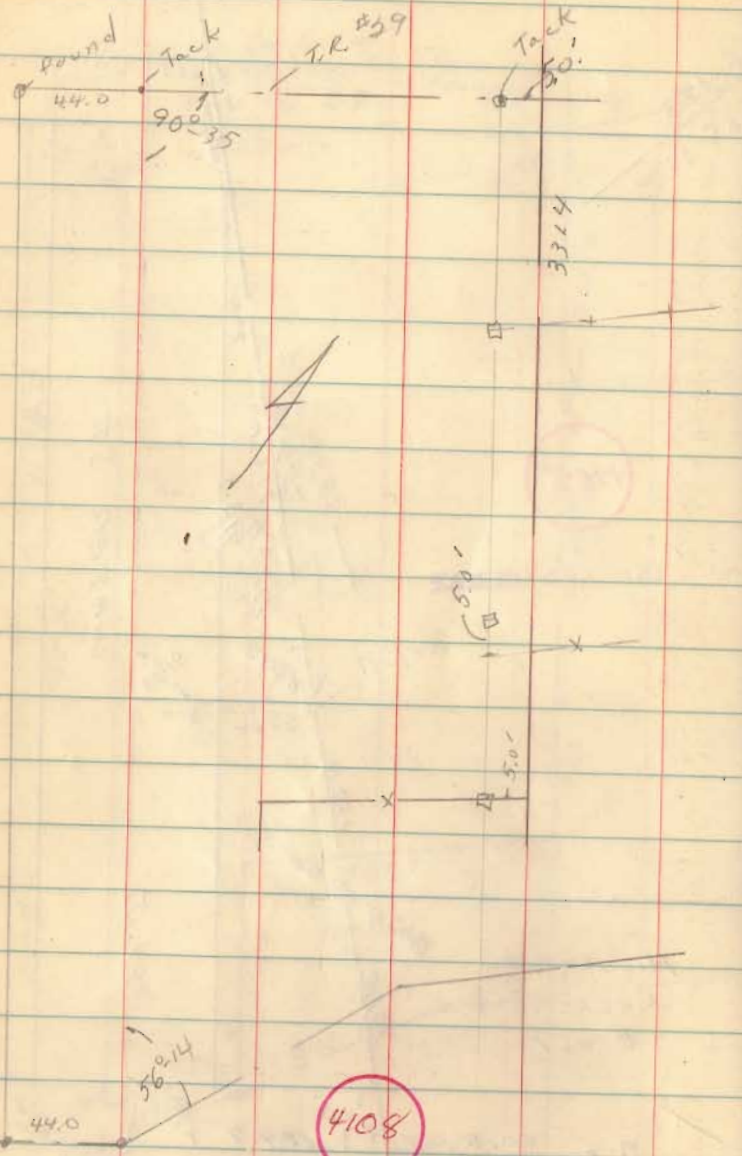
McAllister
Middleburg



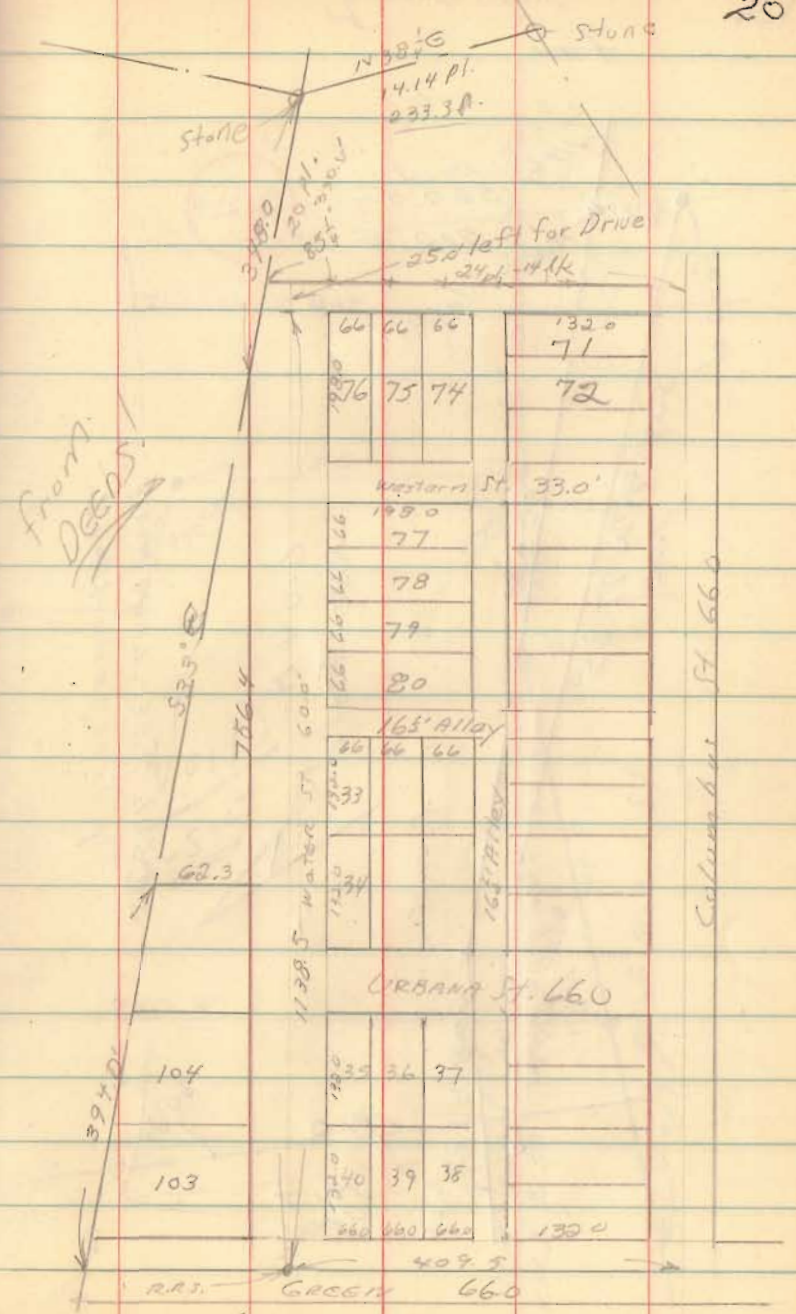
May, 1967

19

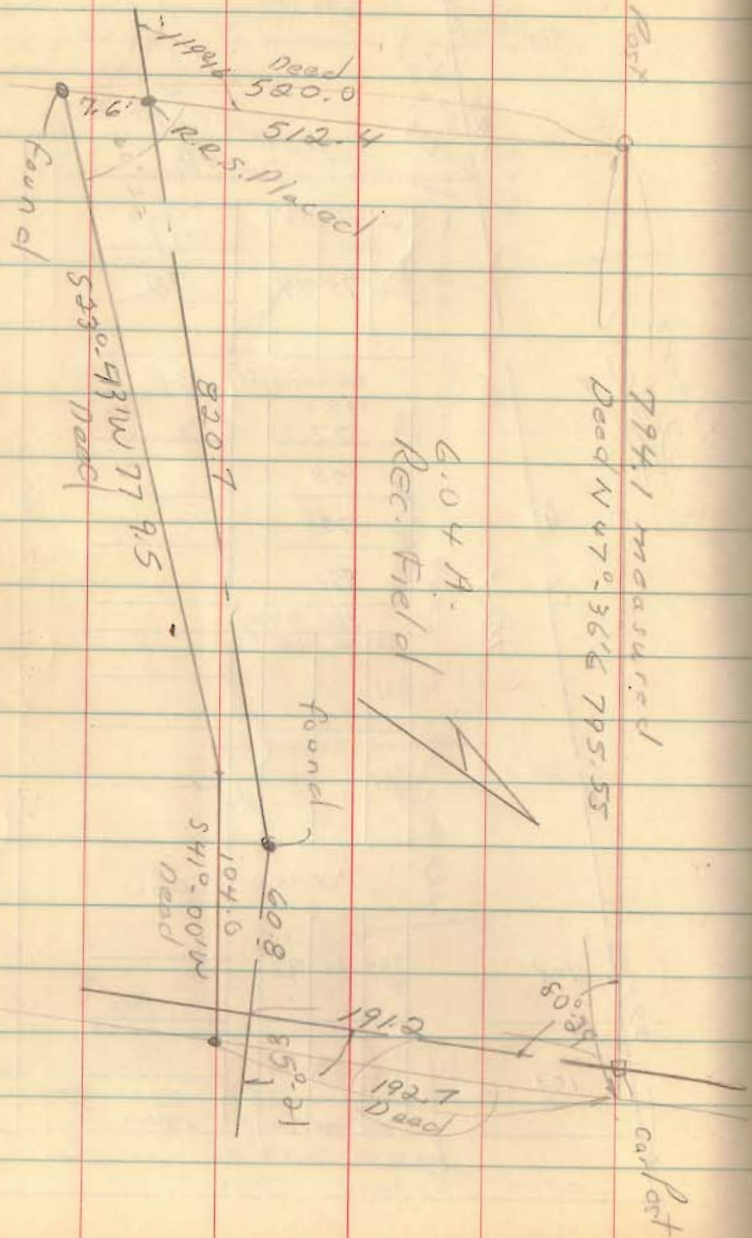




INDEXED ON MAP



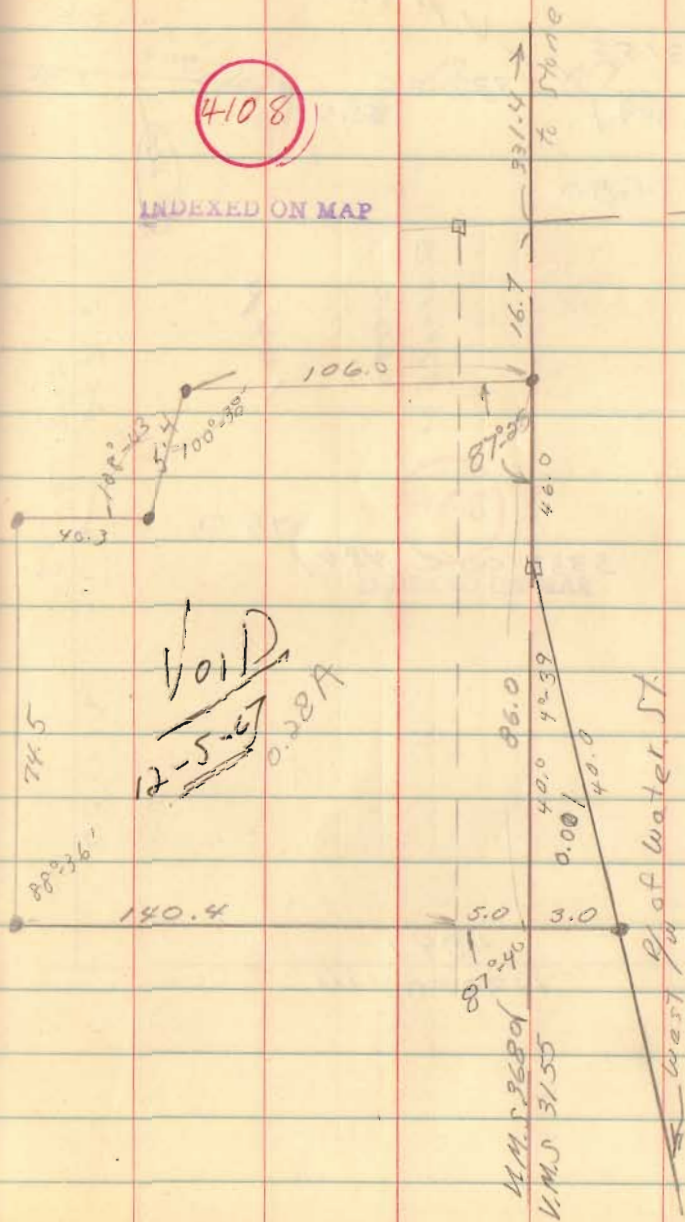
Middleburg

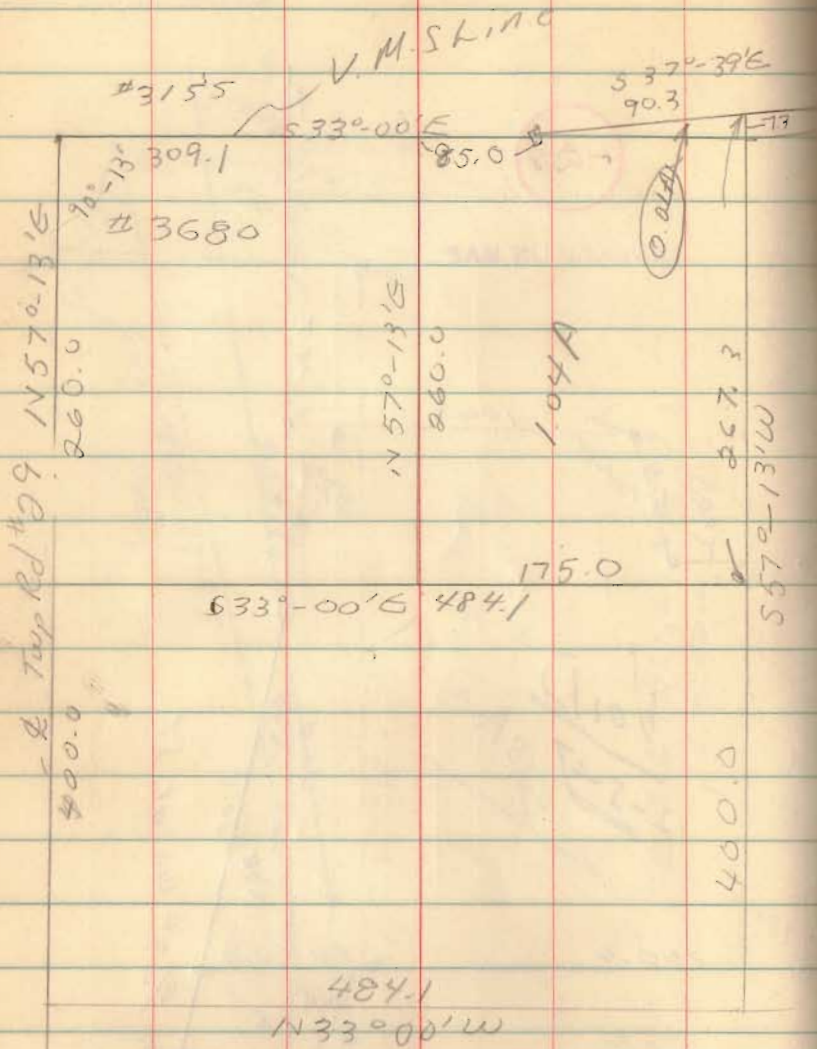


21

4108

INDEXED ON MAP





Dec.

22

Desc. in Dec. 67

4108

INDEXED ON MAP

ES

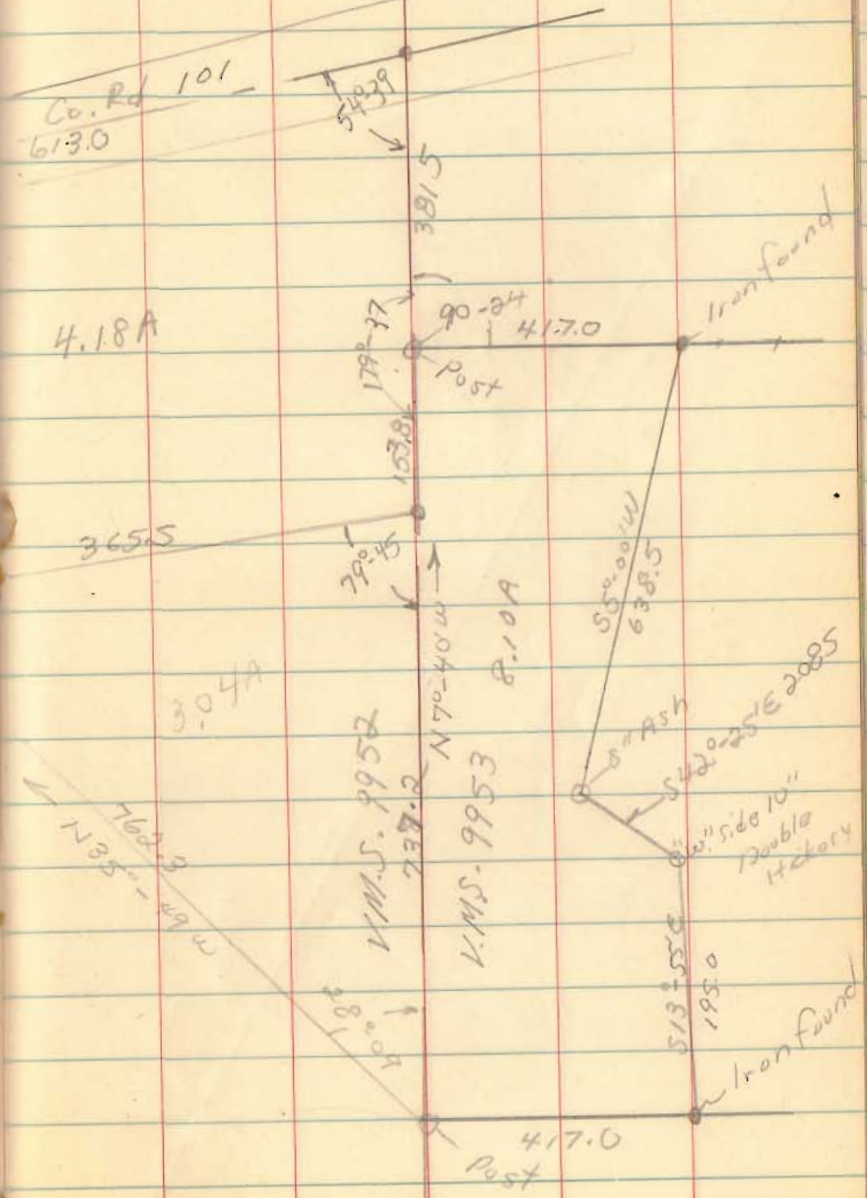
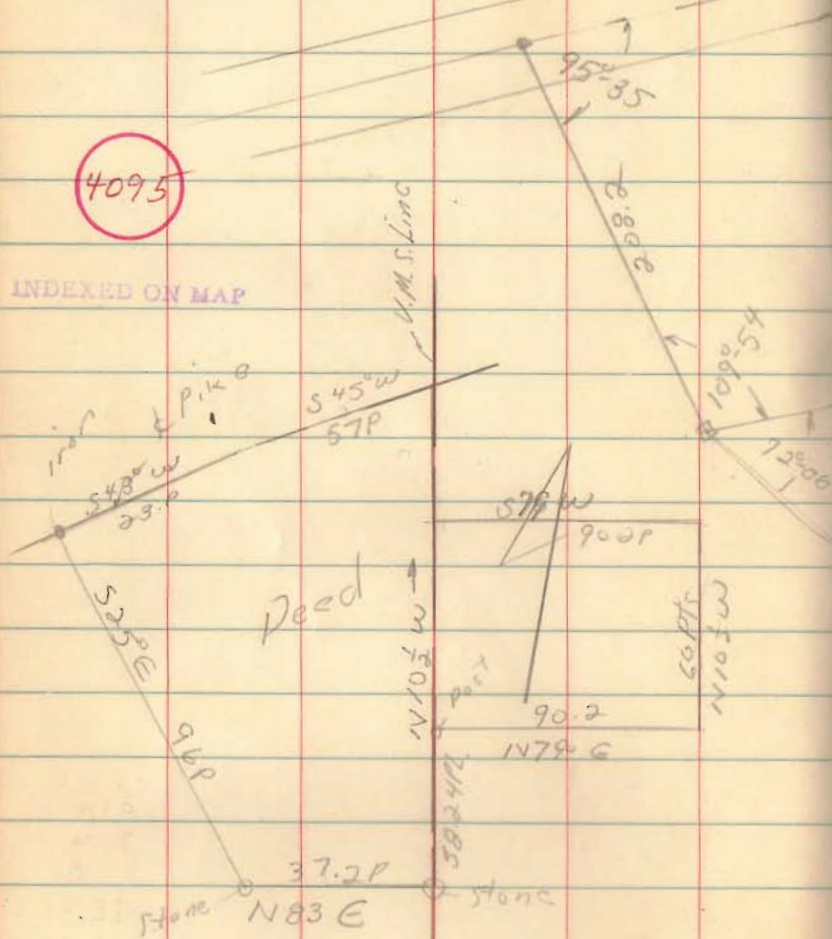
Richard Cummings
U.M.S. 9952 # 9953
Rushorack trap

June 3, 67

24

4095

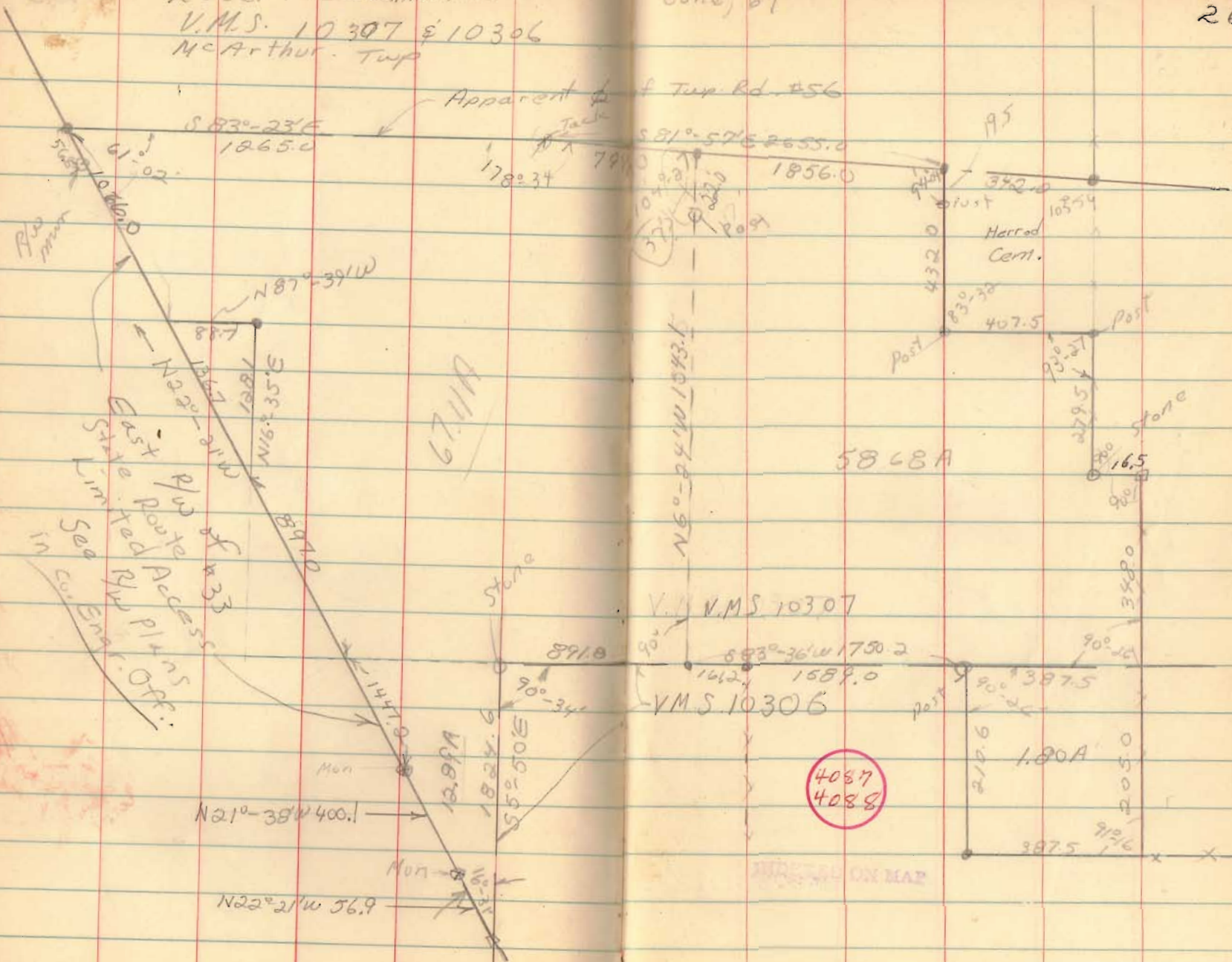
INDEXED ON MAP



Robert Cummins
 V.M.S. 10307 & 10306
 McArthur Twp

June, 67

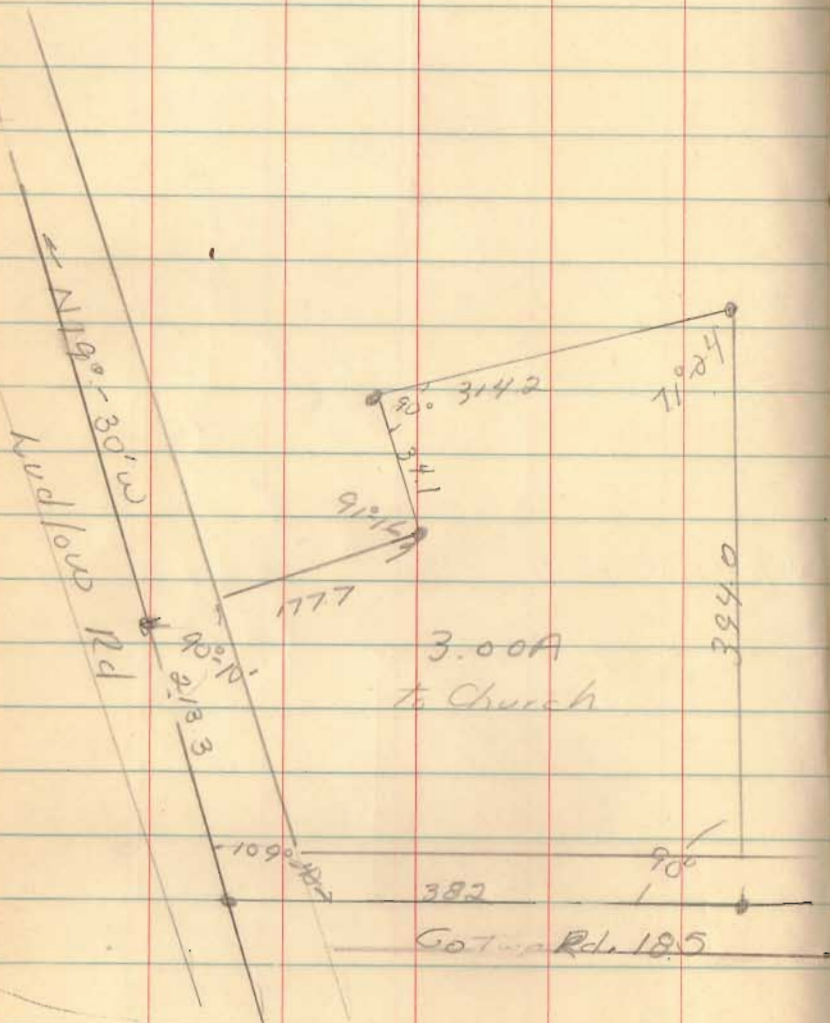
26



P. Tillman to Church
U.M.S. 10086-10198
LAKE TWP.

June, 1967

28



INDEXED ON MAP

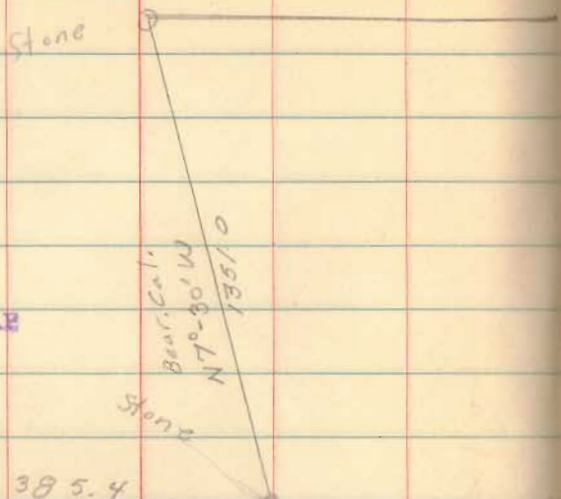
Ganson
Jefferson Twp

June, 67

30

4079
4113

INDEXED ON MAP



Bear. Cal.
584° - 58'E
17070



47.17A

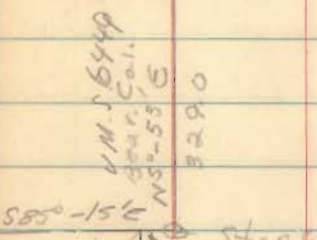
V.M.S. 3220

385.4

(585° - 03'E 1412.7) V.M.S. 3220
V.M.S. 6447

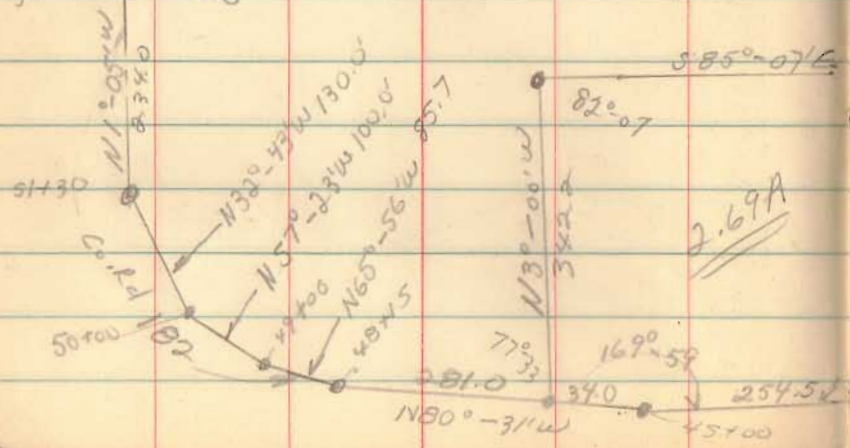
N69° - 45'W
507.5

551.1

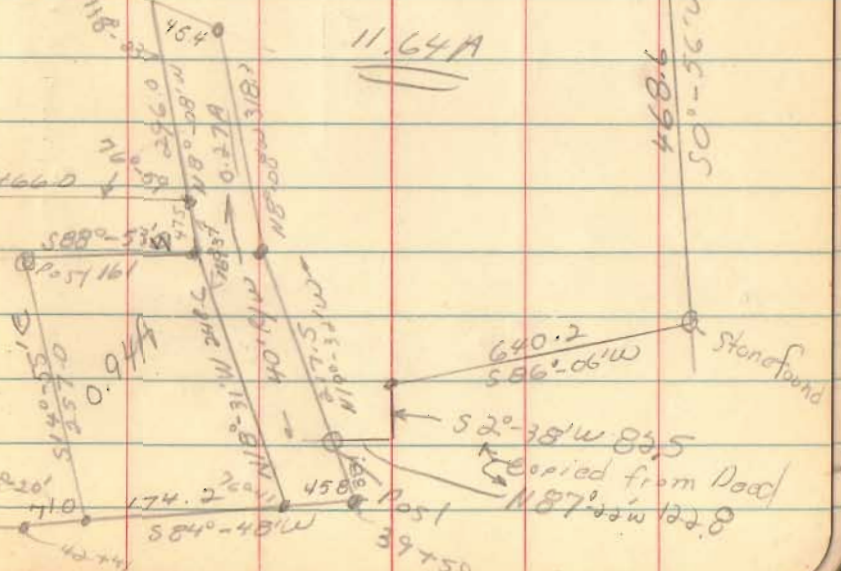


11.43A

11.64A



2.69A

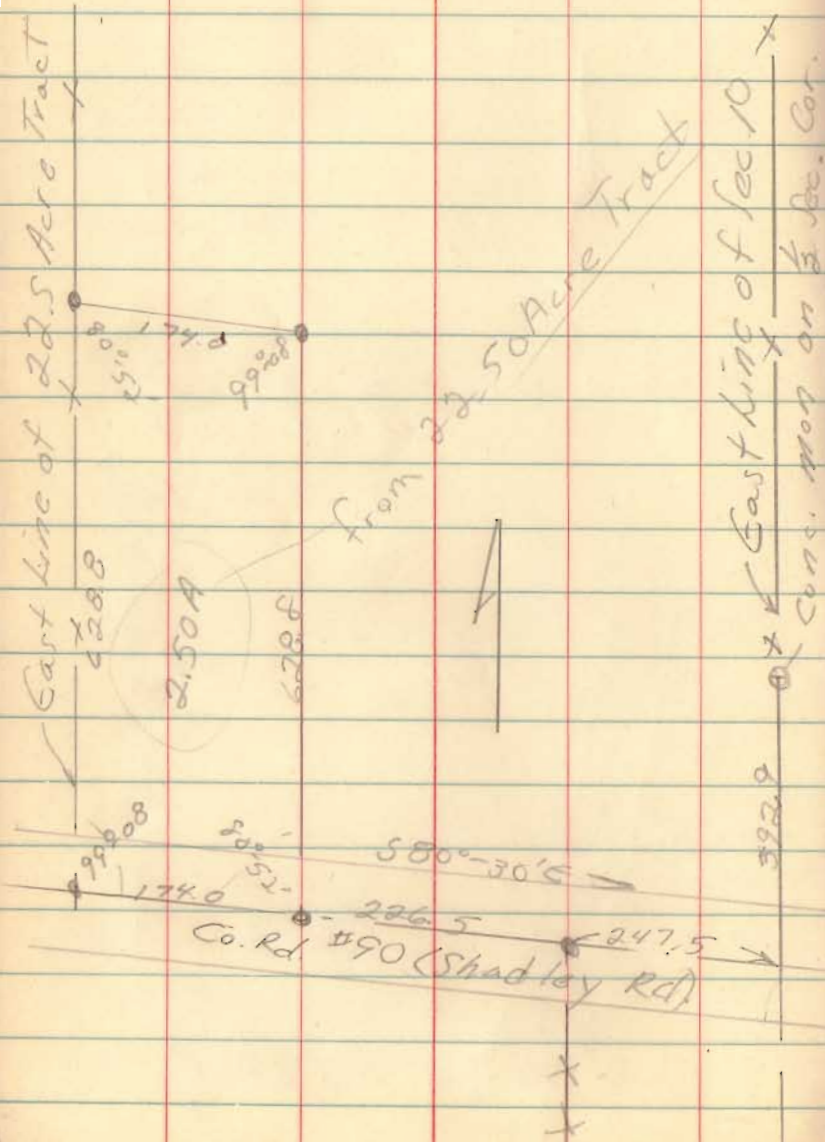


640.2
586° - 06'W
52° - 38'W 85.5
Copied from Doc
N87-00'W 122.8

B. wingfield
Sec. 10, T4S, R9E
Marion Twp
Hardin Co.

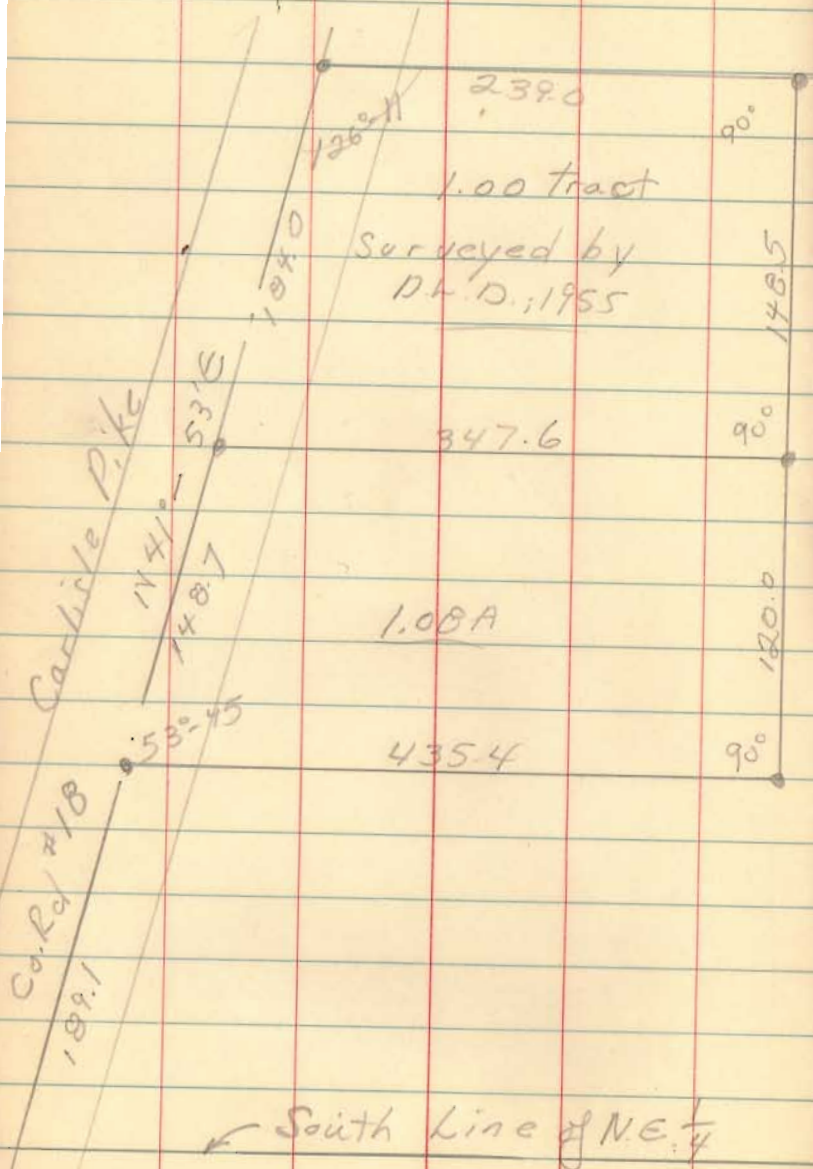
June 29, 67

32



D. Berry
Sec 2, T-3, R-14
Liberty

July

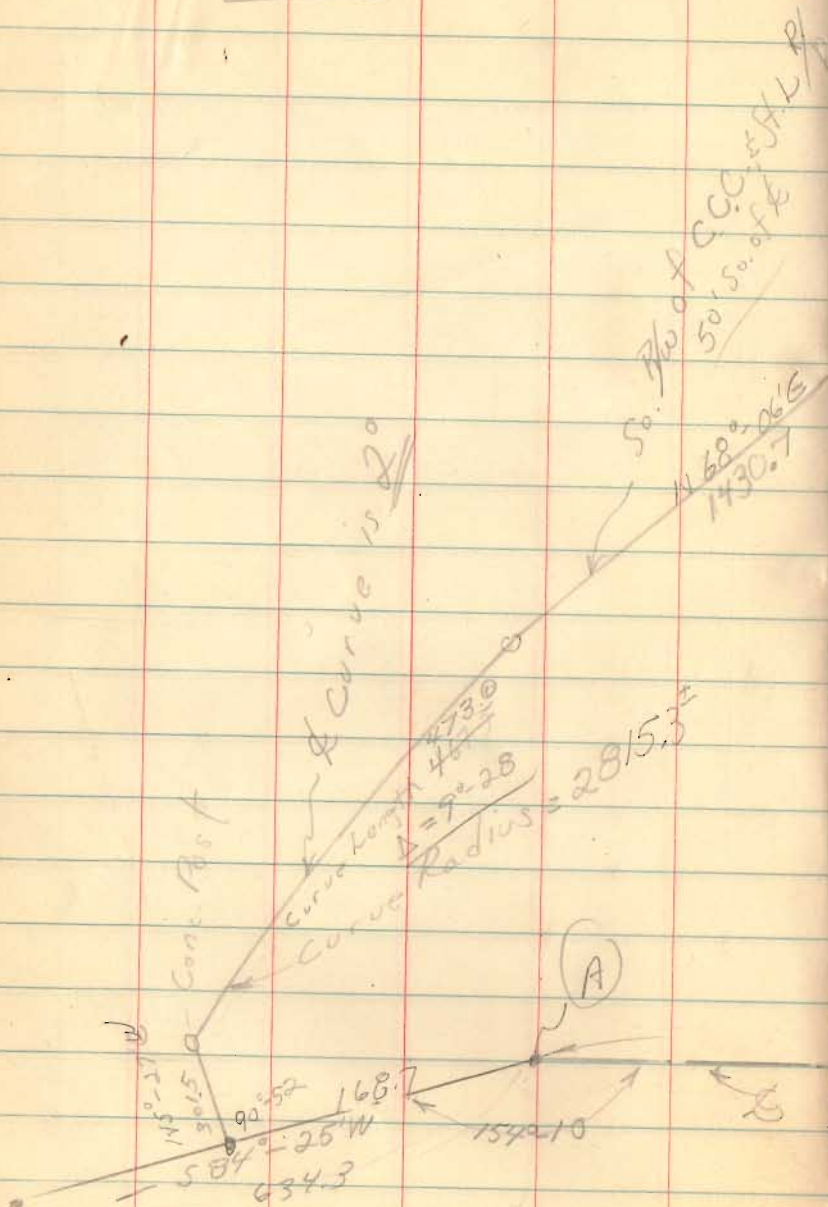


4117

INDEXED ON MAP

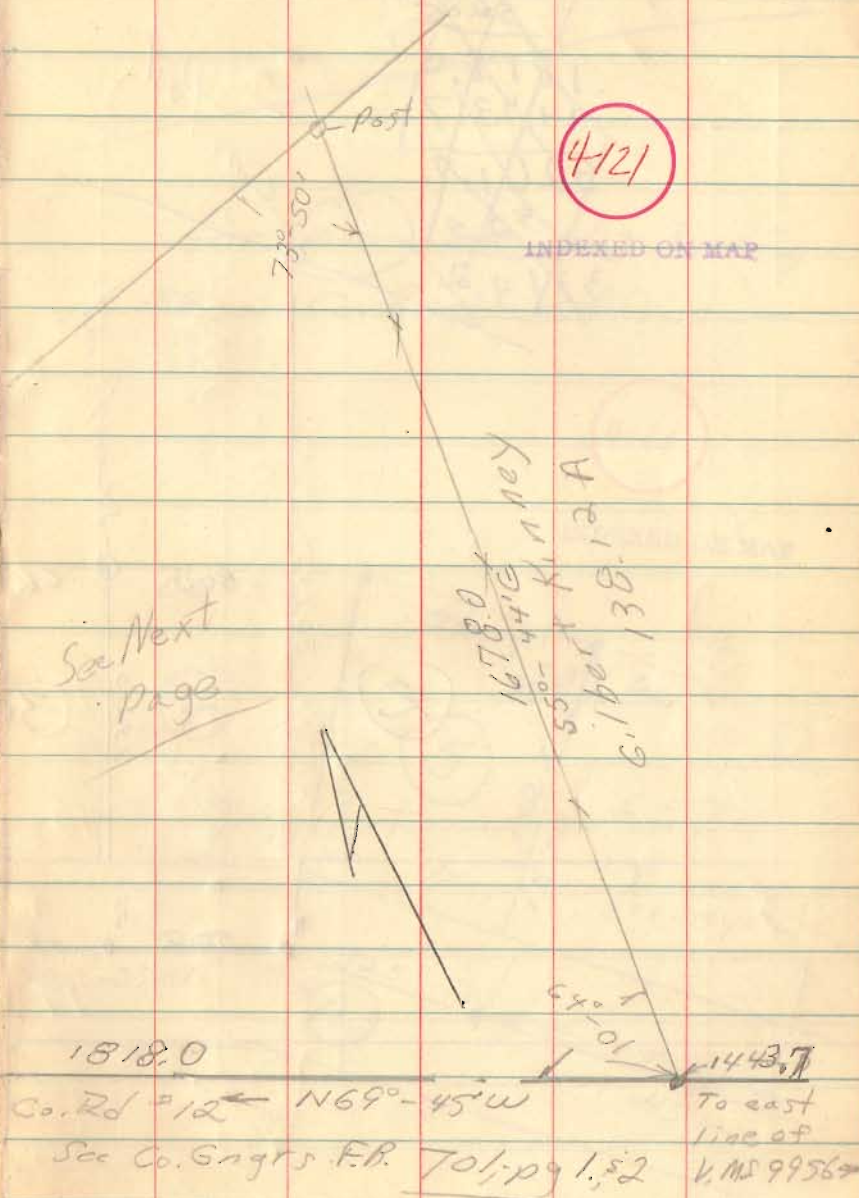
← South Line of NE 1/4

Mc Graft To Brugler
Rushcreek Twp
V.M.S. 9956



July 25, 67

36



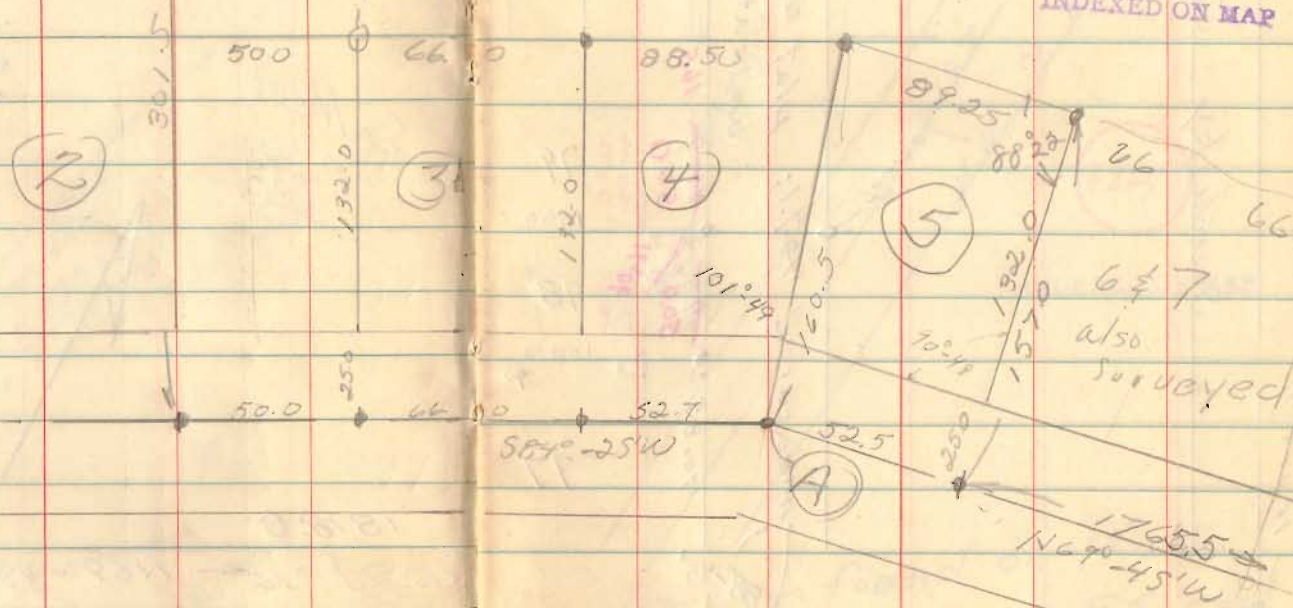
~~1765.5
52.5
1818.0
1443.7
3201.7
52.5
3714.2~~

Conc. Post

for Wierberg see plat Book C,
pg 188, in Co Engrs office

4121

INDEXED ON MAP



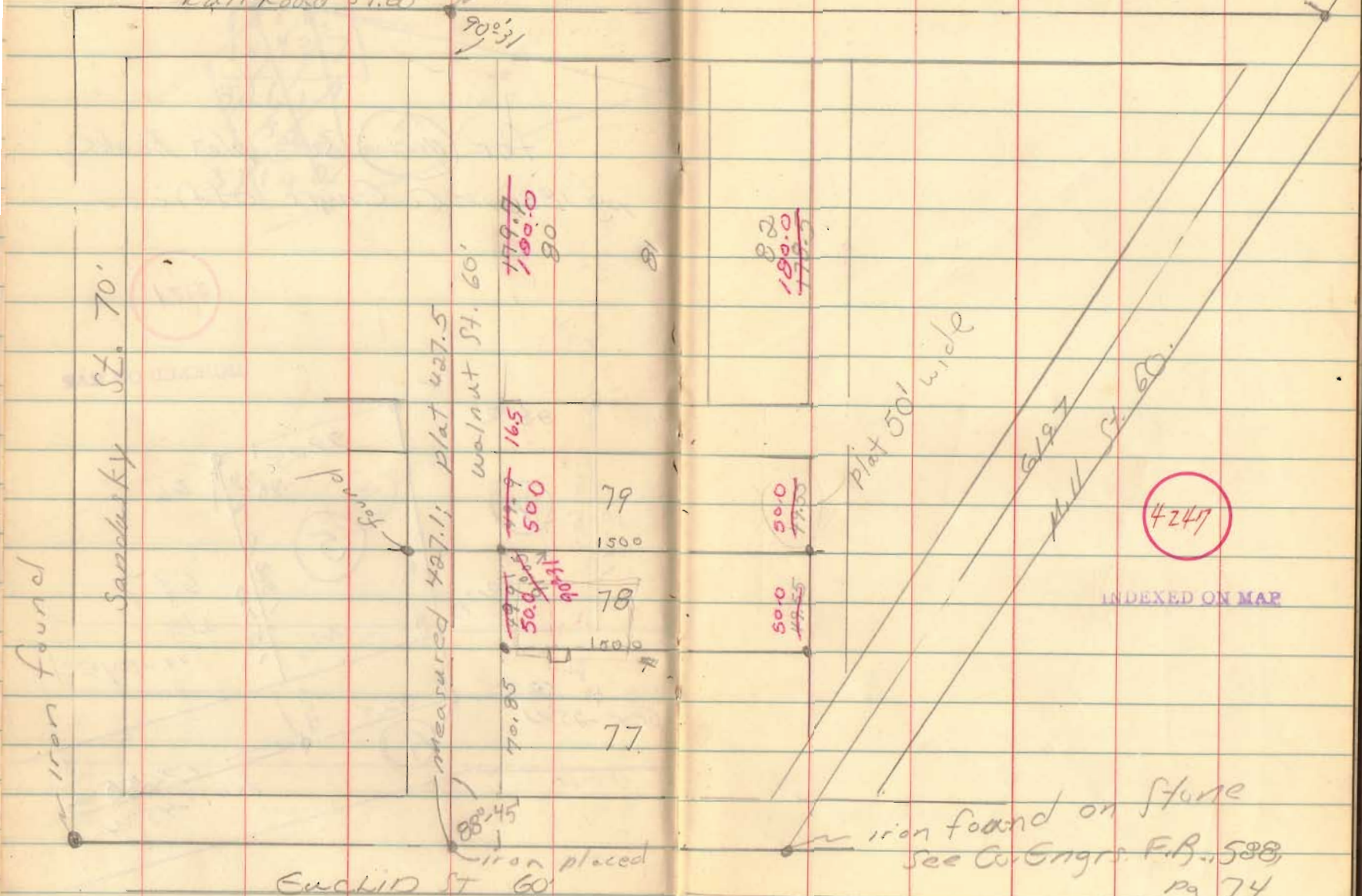
No. Claim Survey
 Lot # 78
 Rushsylvania

July 27, 67

38

Rail Road St. 60' iron placed

iron found

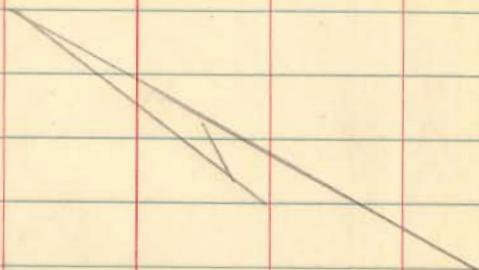


iron found on Stone
 See Co. Engrs. F.B., 538,
 pg 74

Spain to Colman
U.M.S. 3680
Zane Top

Aug 2, 1967

40



4124

INDEXED ON MAP

S.R. 280

North →

3403.0

S.R. 539

1096.5

532° 00' E →

128.1

90°

170.0

0.50A

170.0

128.1

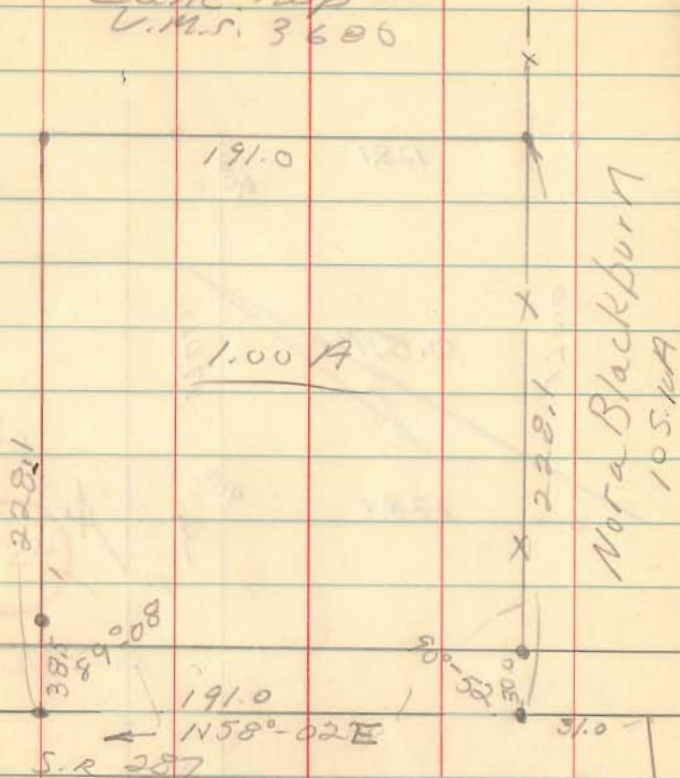
90°

of 20' wear.

986.0

93° 49'

Spinto King
Zane Trip
U.M.S. 3600



Nora Blackburn
105.14 A

for S. Route "287"
See Co. Engr.
F.B. 558,
B 42

Co. Rd 151.0

July 1967

41

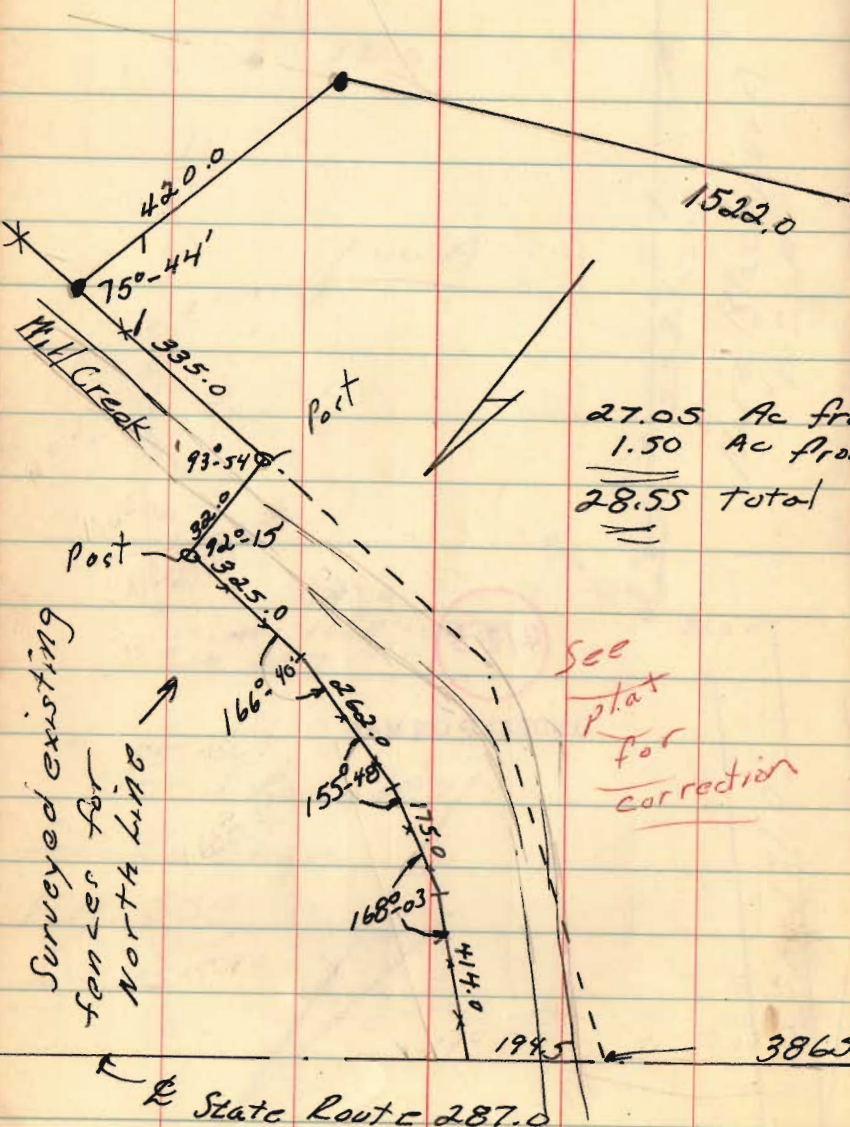
4123

INDEXED ON MAP

Don Shirk to Current
 V.M.S. 3680
 Lane Twp.

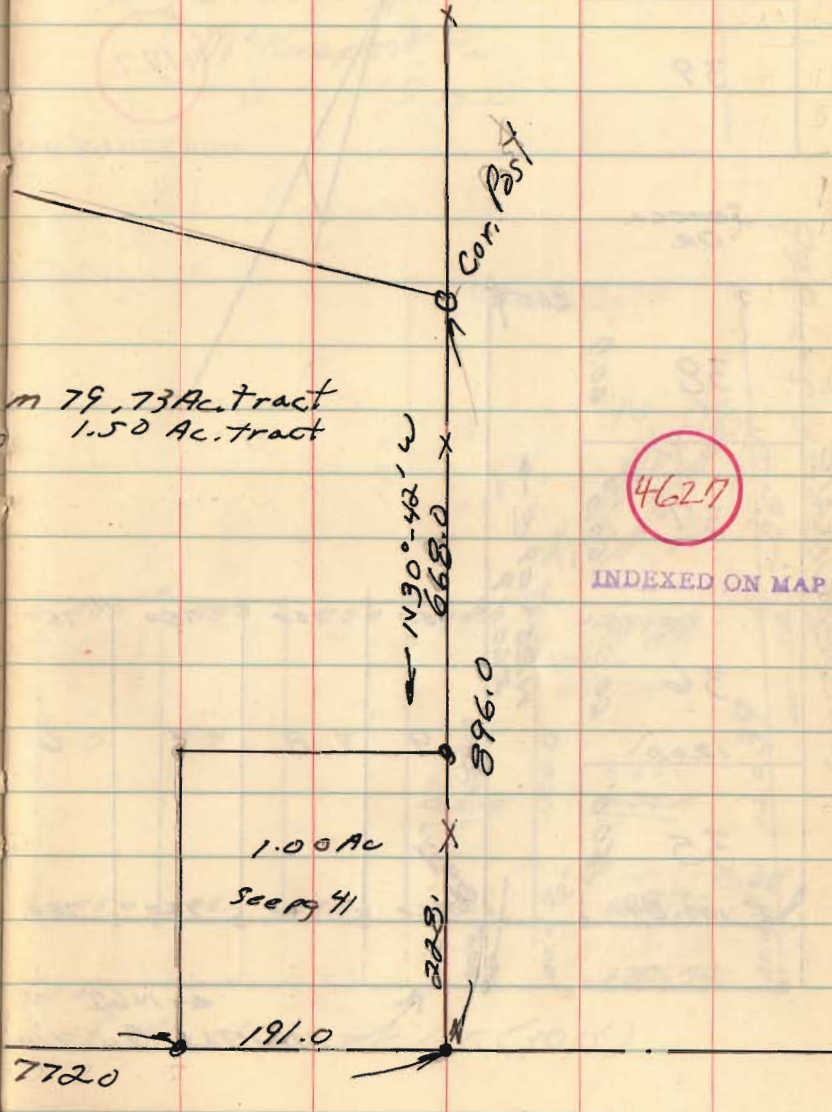
Nov. 8, 69

42



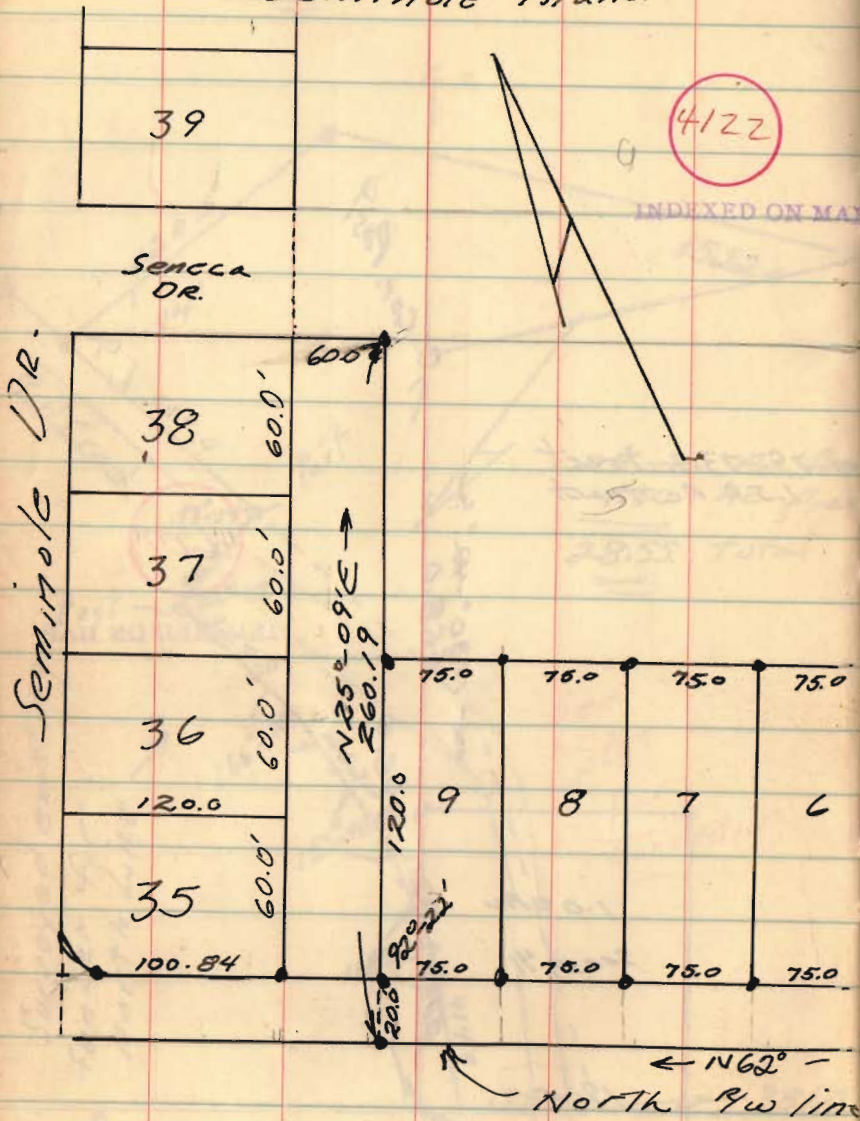
27.05 Ac from 79.73 Ac. tract
 1.50 Ac from 1.50 Ac. tract
28.55 total

See
 plat
 for
 correction



462.7
 INDEXED ON MAP

Warden Immel
 V.M.S. 12276
 Stokes Twp.
 Seminole Island



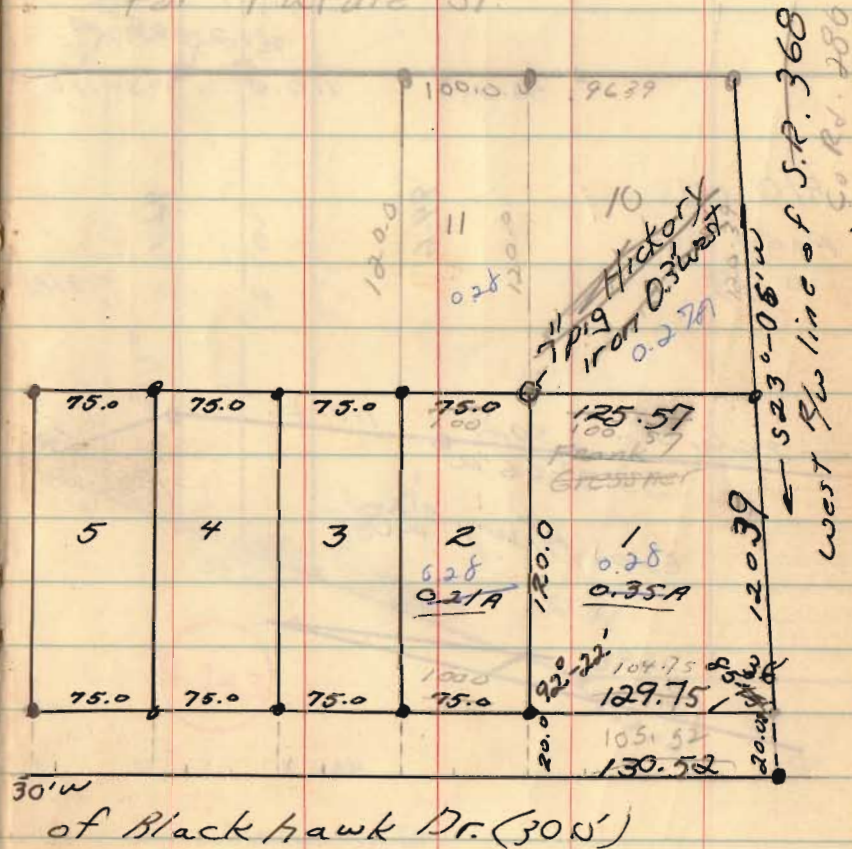
Aug 8, 1967

Ed. Thompson

43

2928 Myer Blvd
 McKeesport, Pa
 15132

For Future St.



W. Immel
See page 43

Sept. 68

See pg '67"

238.6

0.54 Ac

Sept, 1970

1425°-09'

100.0

50.0

110.0

110.0

110±

#10 07

page

43

94.6

92.1

0.31 Ac

157.2

168.6

183.5

260.86

50.24

110.26

125.4

22.0

285

118°51'

57.67

152°11'

39.26

Co. Hwy 2086

474.3

INDEXED ON MAP

Dragonette
Survey

Warden H.
Mabel C

44

480.0
237.7

7.08

0.001

92°24'

25

25

18.4

157.2

0.61 Ac

57.0

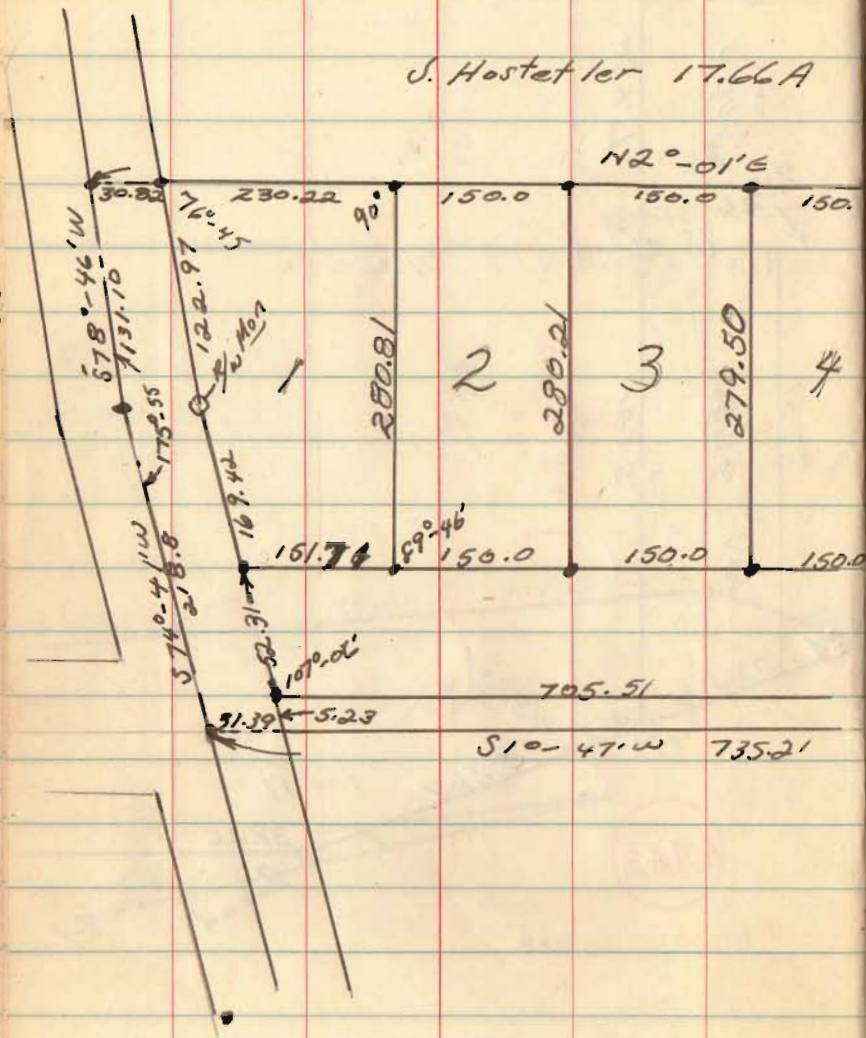
found

found

found

OAK HTS. ALLOTMENT.
 S.W. 1/4 of Sec. 3, T. 4, R. 13, M.R.S.
 Harrison Twp.; Champaign Co

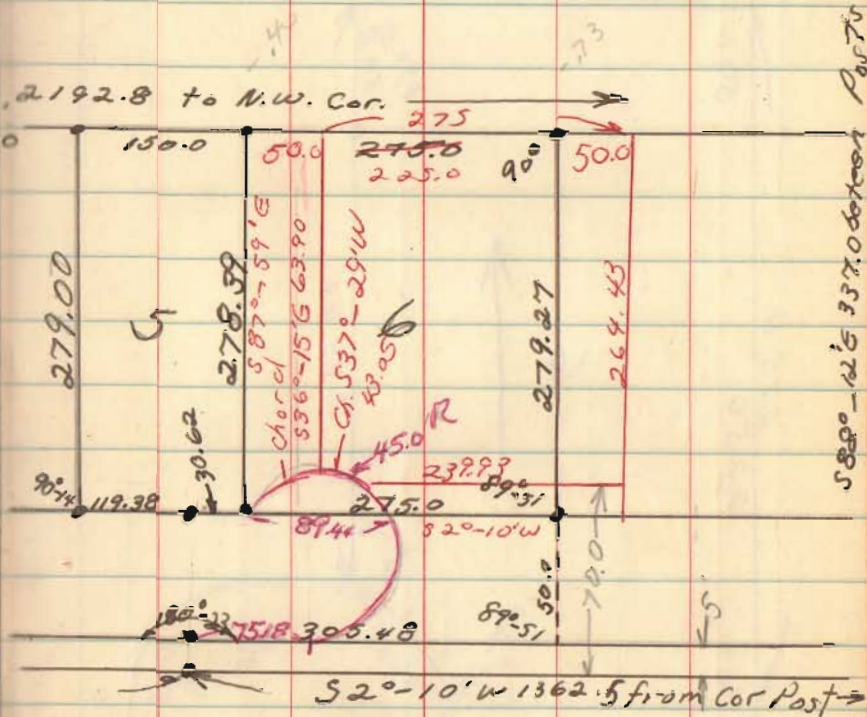
J. Hostetler 17.66A

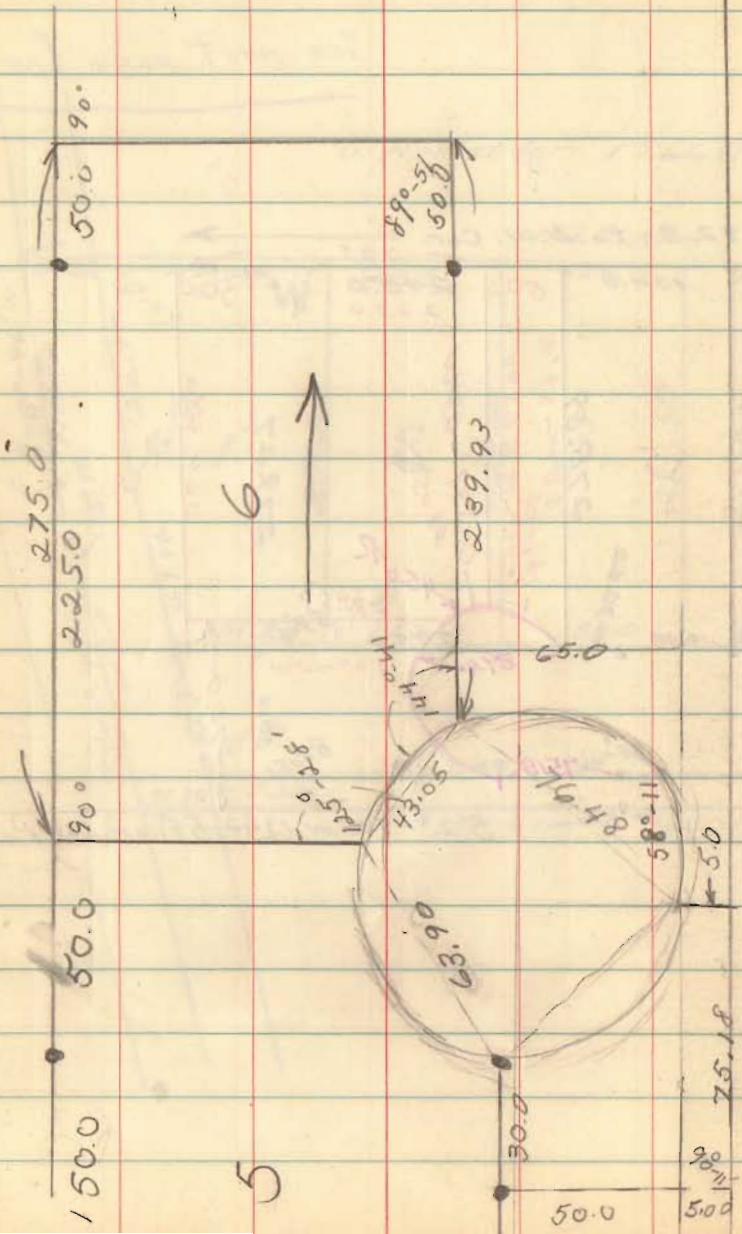


Aug 7, 1967

45

See next page for 6

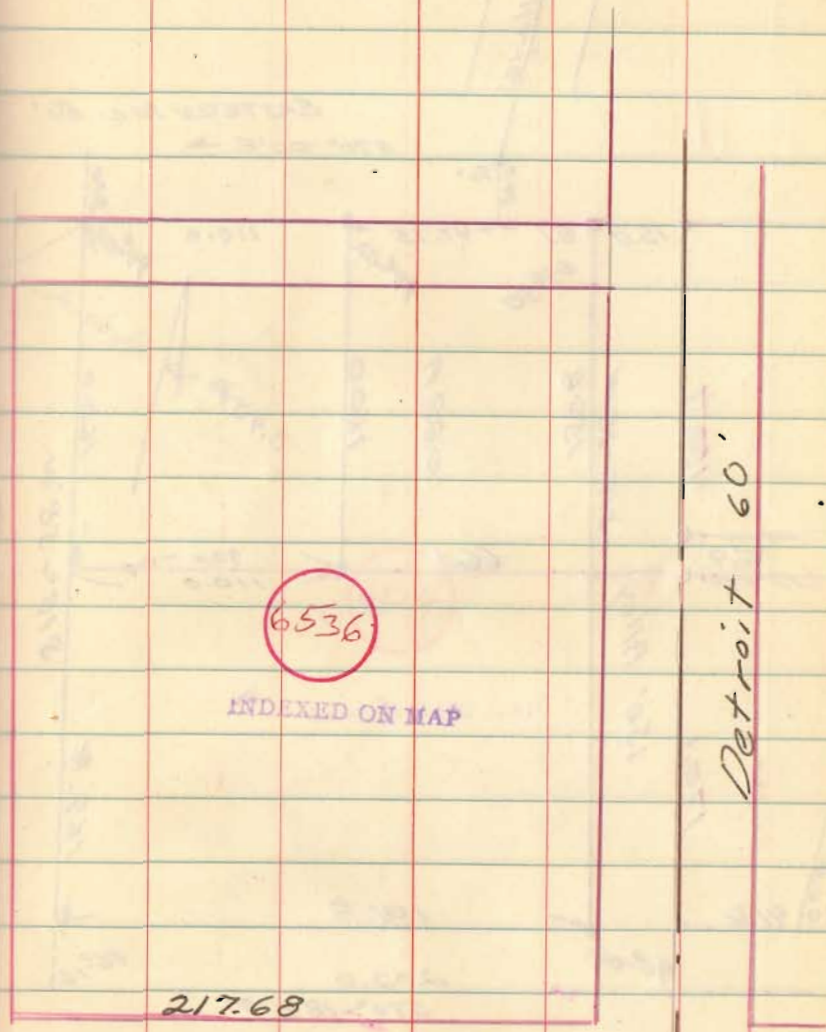
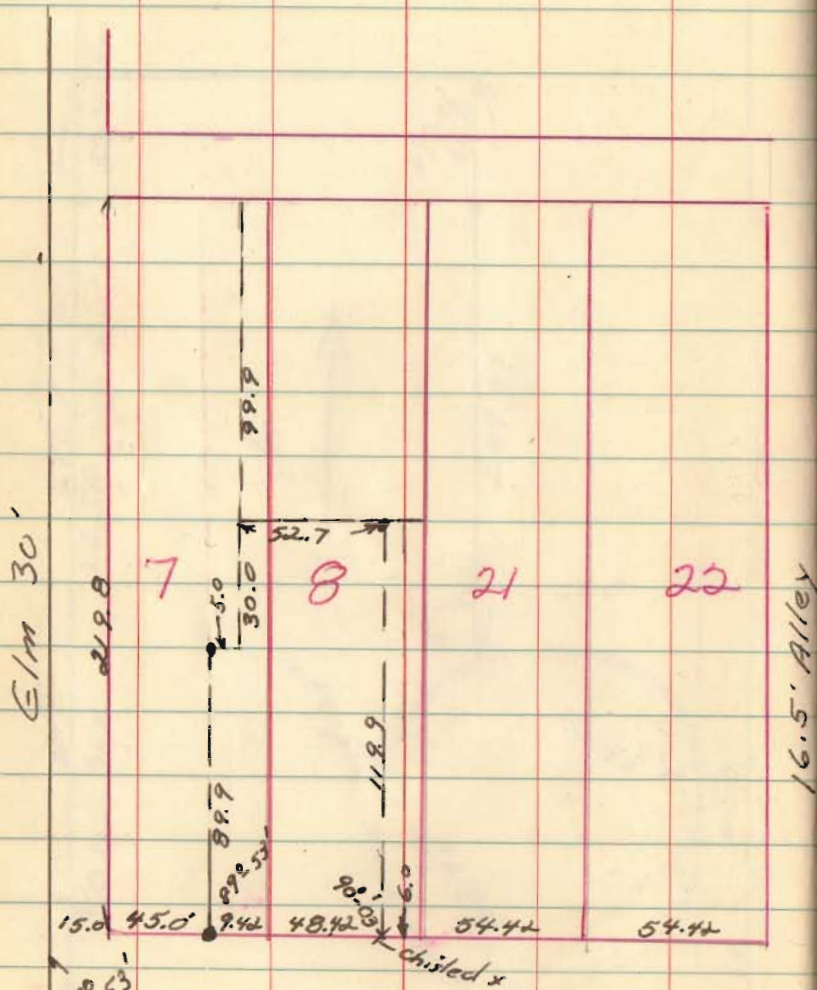




Le Roy Jamison
224 W. Sandusky
Bellefontaine, O

Aug 1967

47



Plat Dist 501.5, Measured 497.0

W. Sandusky 60'

Mrs Lowell Pugh

R.R. 3

V.M.S. 4990

HAYES

EASTERN AVE. 60'

S70°00'E →

15.0

8.1

47.75

110.0

94-02.300

89-38

94-02

152.7

S19-38W

158.6

0.287

160.0

0.409

160.0

S15-58'W

6.9

66.1

90.0

110.0

150' Alley

170.1

169.4

186.9

202.9

S70-18E →

COOPER

98-04

86-16

Aug 1967

48

Chisled on br

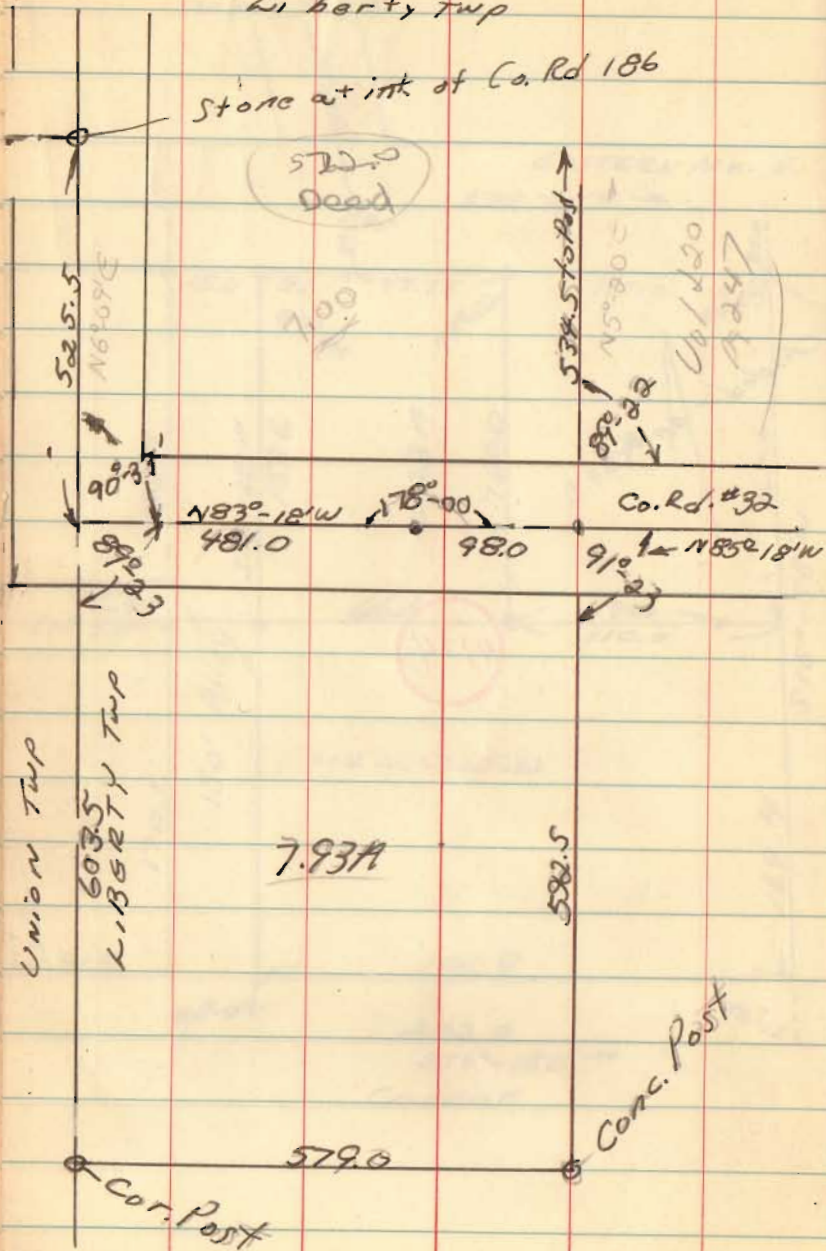
4114

INDEXED ON MAP

Wm Arnold
Sec. 1 T-3, R-14
Liberty Twp

Stone at intk of Co. Rd 186

522.0
Dead

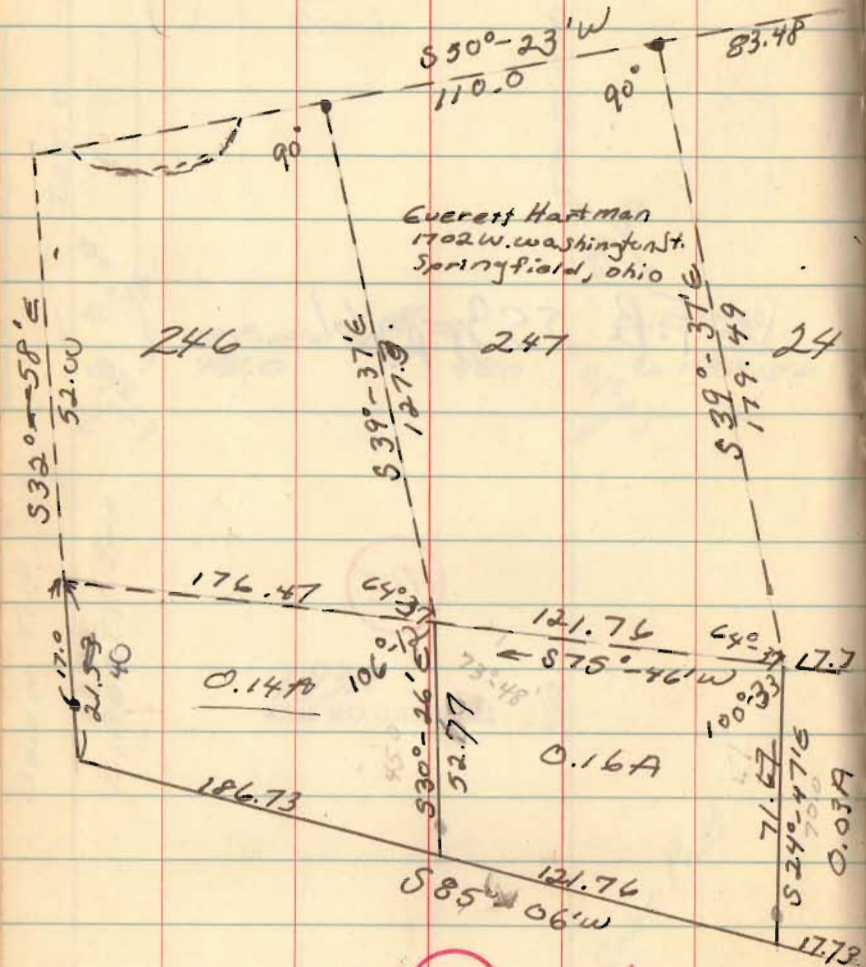


See F.B. 559, pg 61

4418

INDEXED ON MAP

INDIAN LAKE SHORES
 U.M.S. 13373
 Richland Twp.

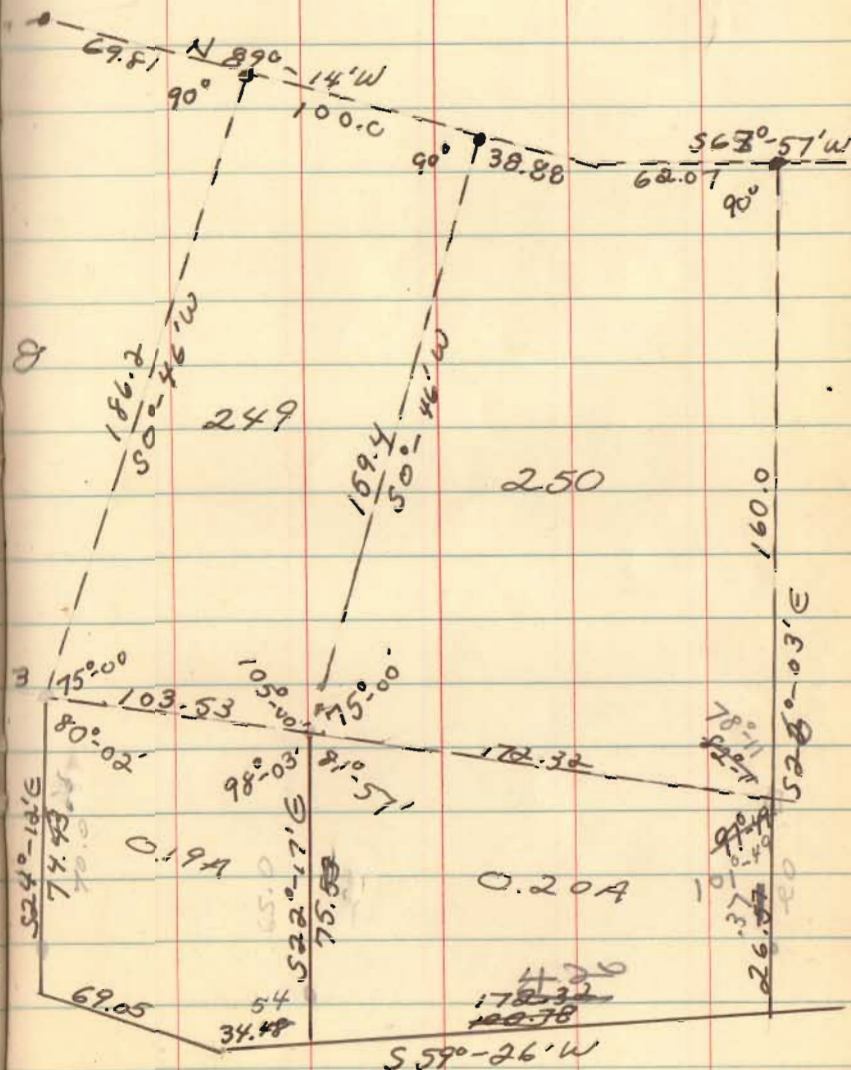


INDEXED ON MAP

Aug. & Sept. 1967

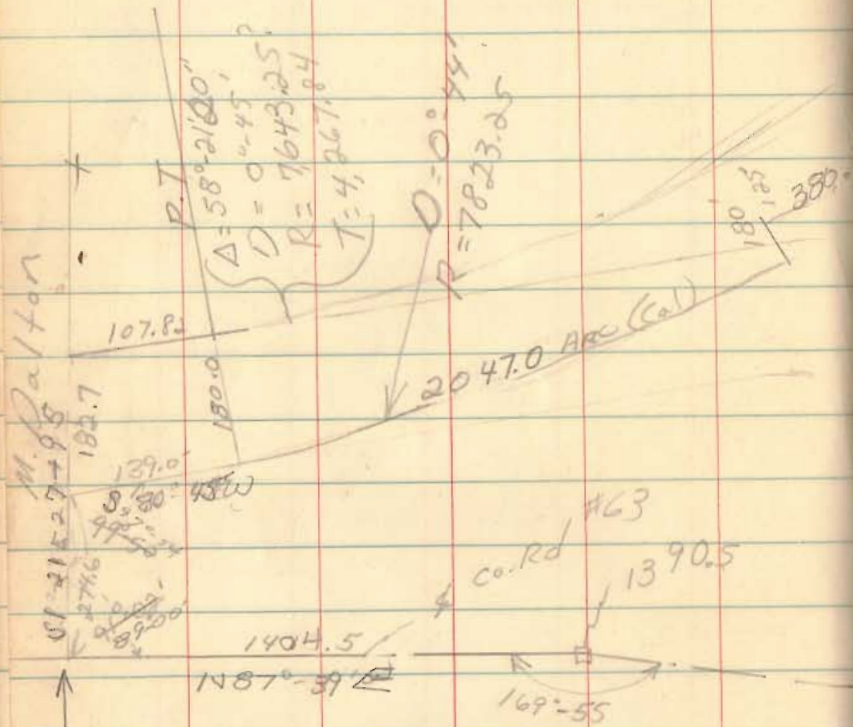
50

Miss C.W. Brown, Mgr.
 The Lakeshore Corp.
 708 - 71st St.
 MIAMI BEACH, FLORIDA
 33141



& Co. Rd #63
 Between De Graff
 & Quincy

for
 Malcomb Meade



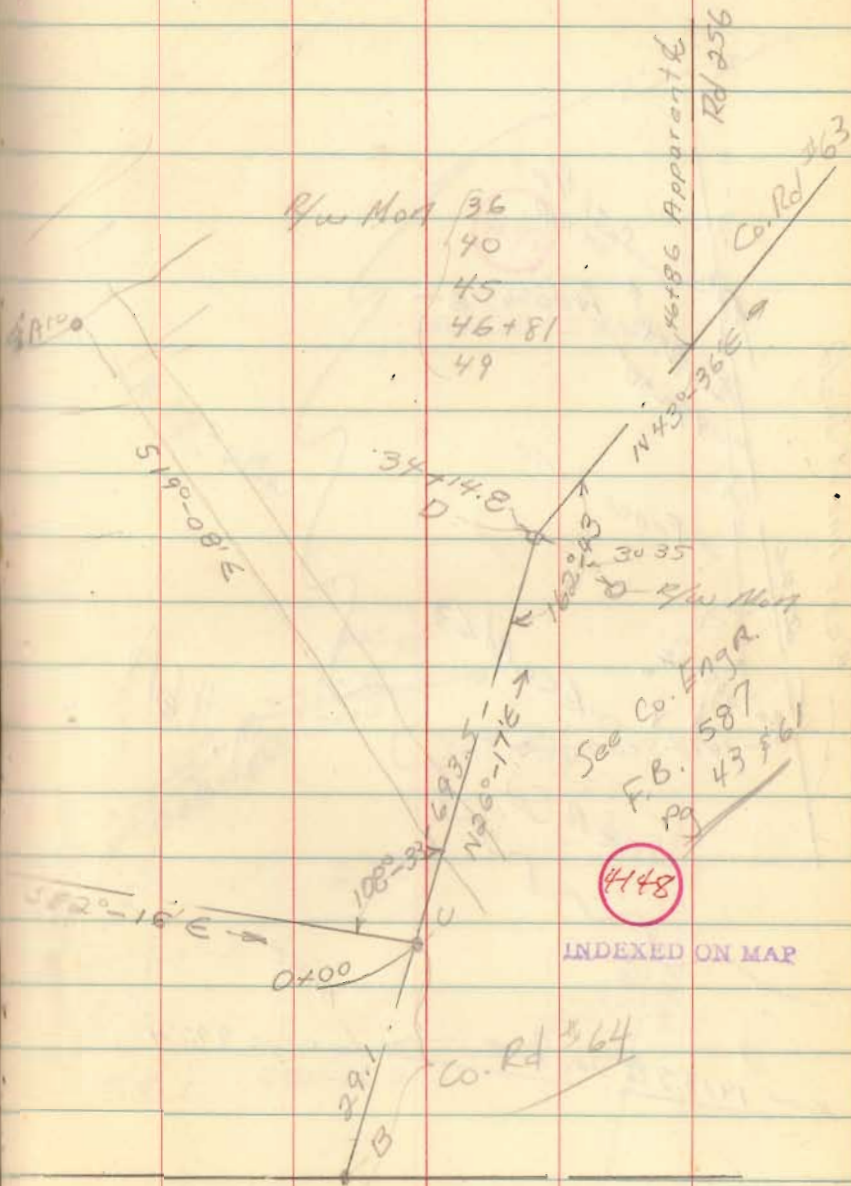
See pg 53
 See Co. Eng'r.
 F.B. 587
 pg 8 & 63

R/W Mons. 1, 3, 6, 8, 10, 12
 13, 14, 15, 19, 22, 27, 29
 R. only

See Co. Eng'r.
 F.B. 587
 pg 8 & 63

Oct 17, 1967

52



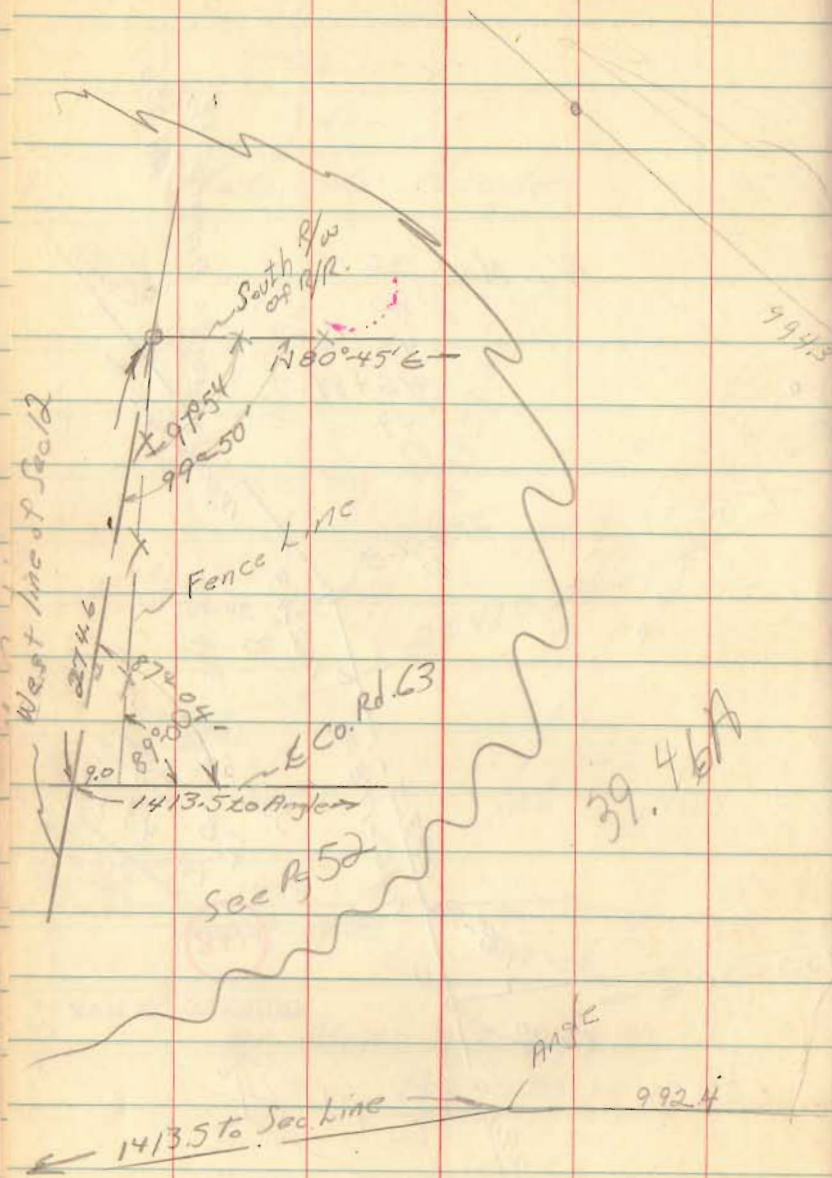
See Co. Eng'r.
 F.B. 587
 pg 43 & 61

4148

INDEXED ON MAP

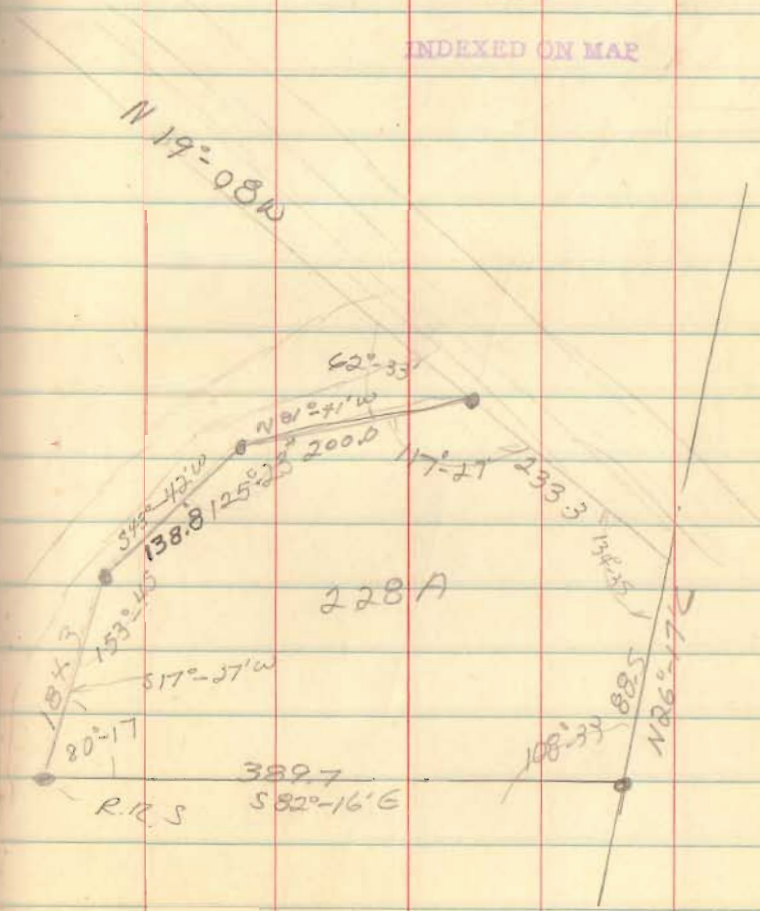
Oct. 14, 1967

53

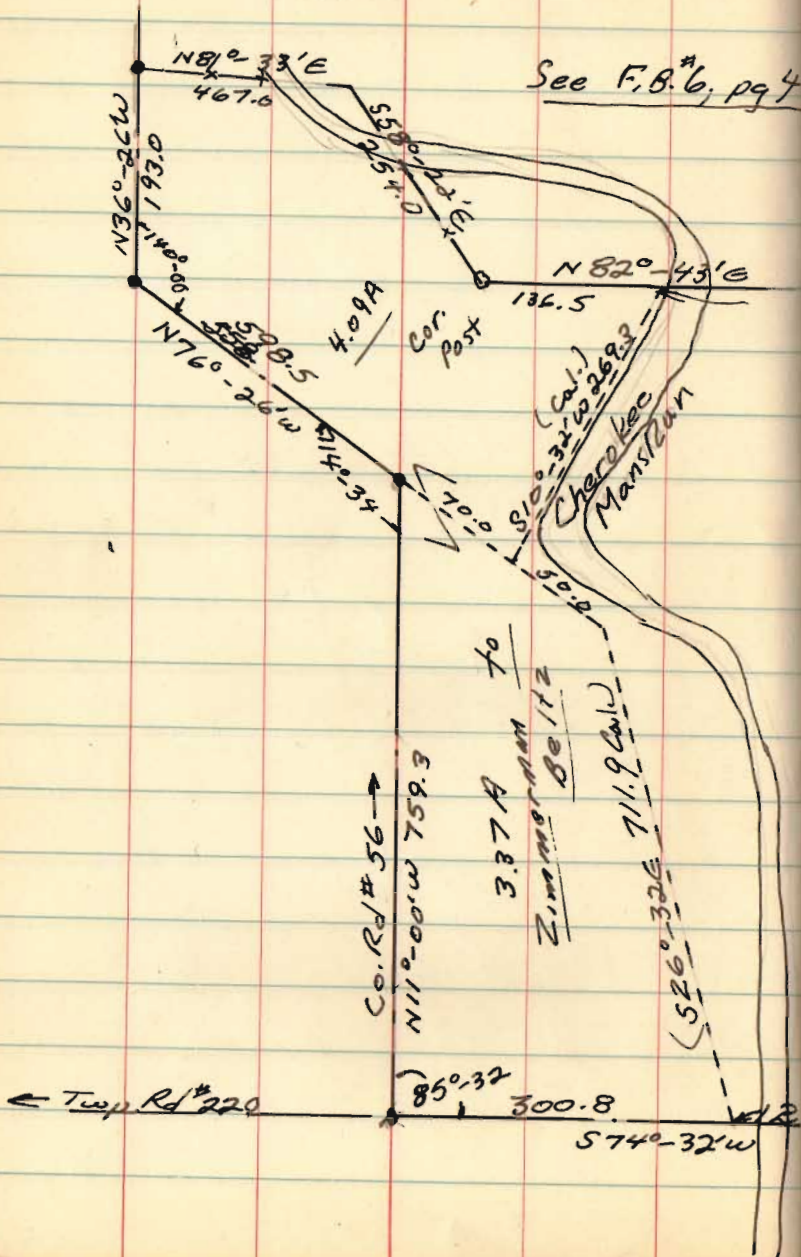


4148

INDEXED ON MAP



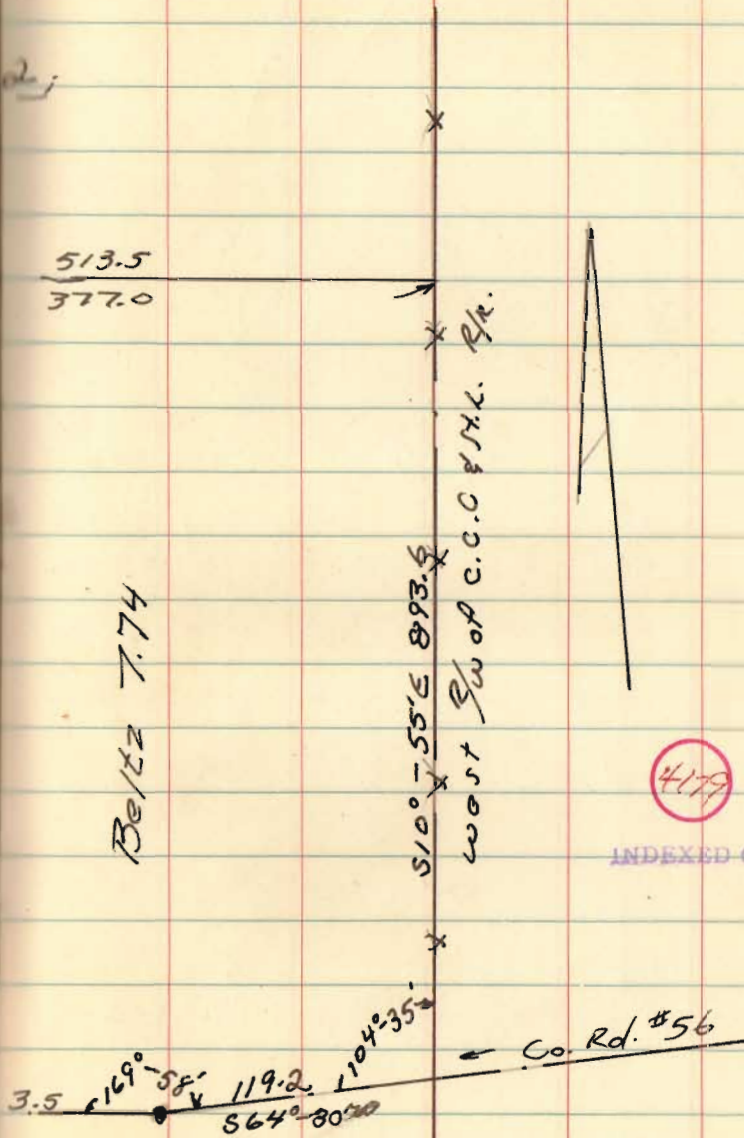
Zimmerman to Beltz
 McArthur twp
 V.M.S. 9801



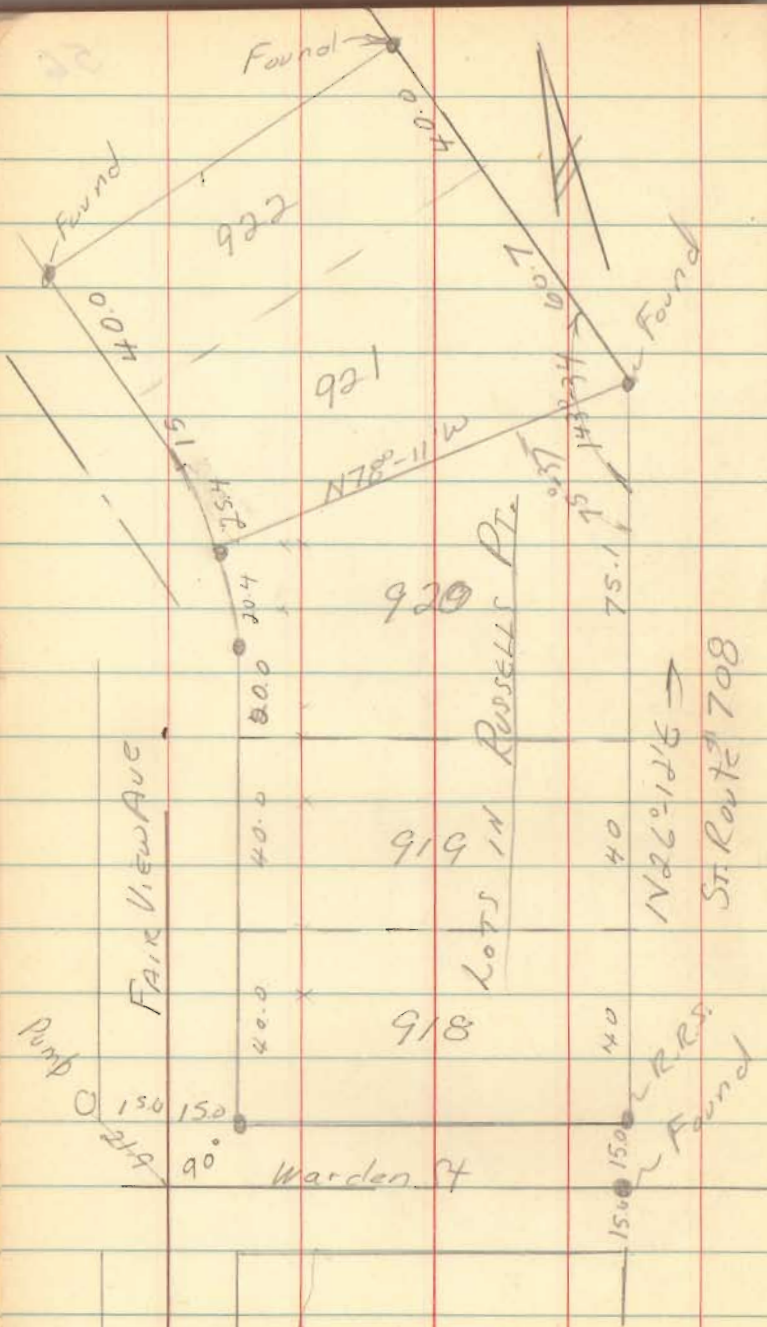
See F.B. 6, pg 4

Nov 4, 67

55



INDEXED ON MAP



Mr. M. G. Armentrout
 P.O. Box 544
 LAKE VIEW

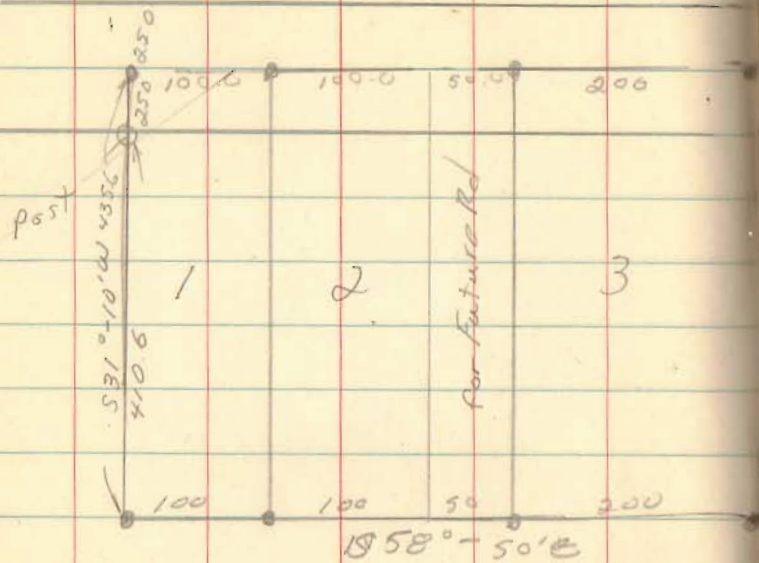
57

Surveyed 1-20-68

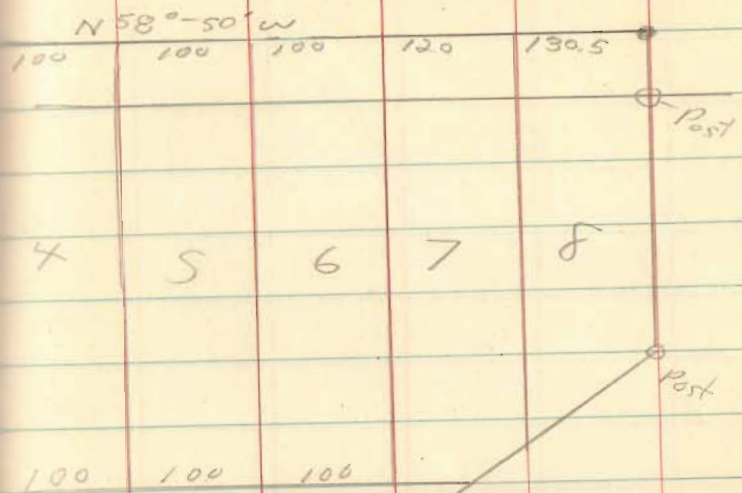
4209

INDEXED ON MAP

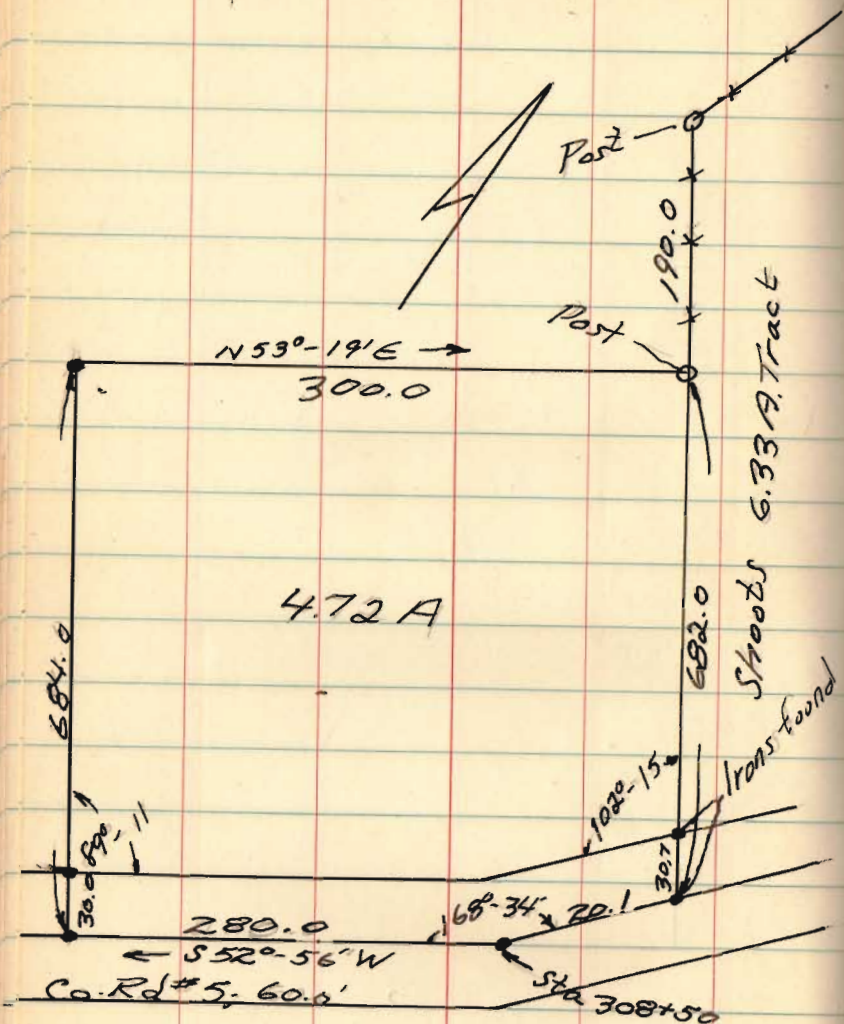
Billie Wingfield
 V.M.S. Nos 10024, 10027, & 10295
 Taylor Creek Twp.
 Hardin Co.



(Silvercreek Rd (Co. Hy. 190))



Gene Lawson
 Across from Ski Lodge
 Jeff. Twp.
 V.M.S 3138 & 4957



4.72 A

see Co Engr. F.B. 497

page 74.

March 30, 1968

61

4197

INDEXED ON MAP

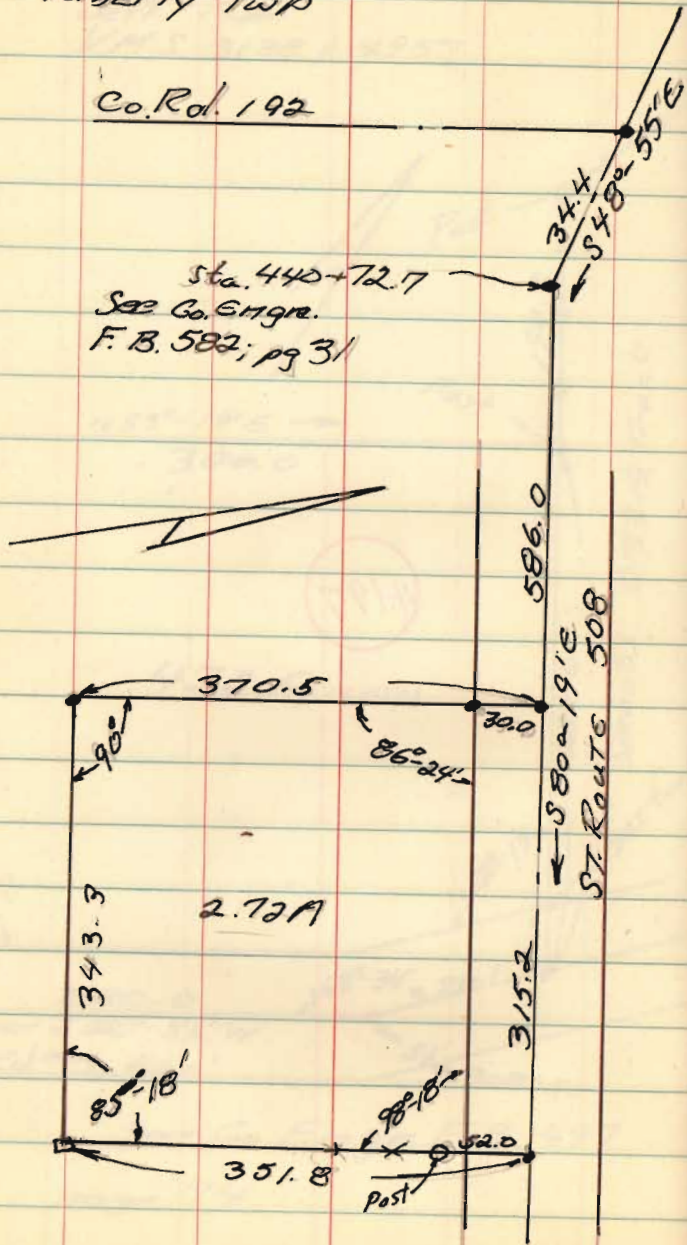
Bylar to King
Sec. 34, T-5, R-13
Liberty Twp

March 20, 1968

62

Co. Rd. 192

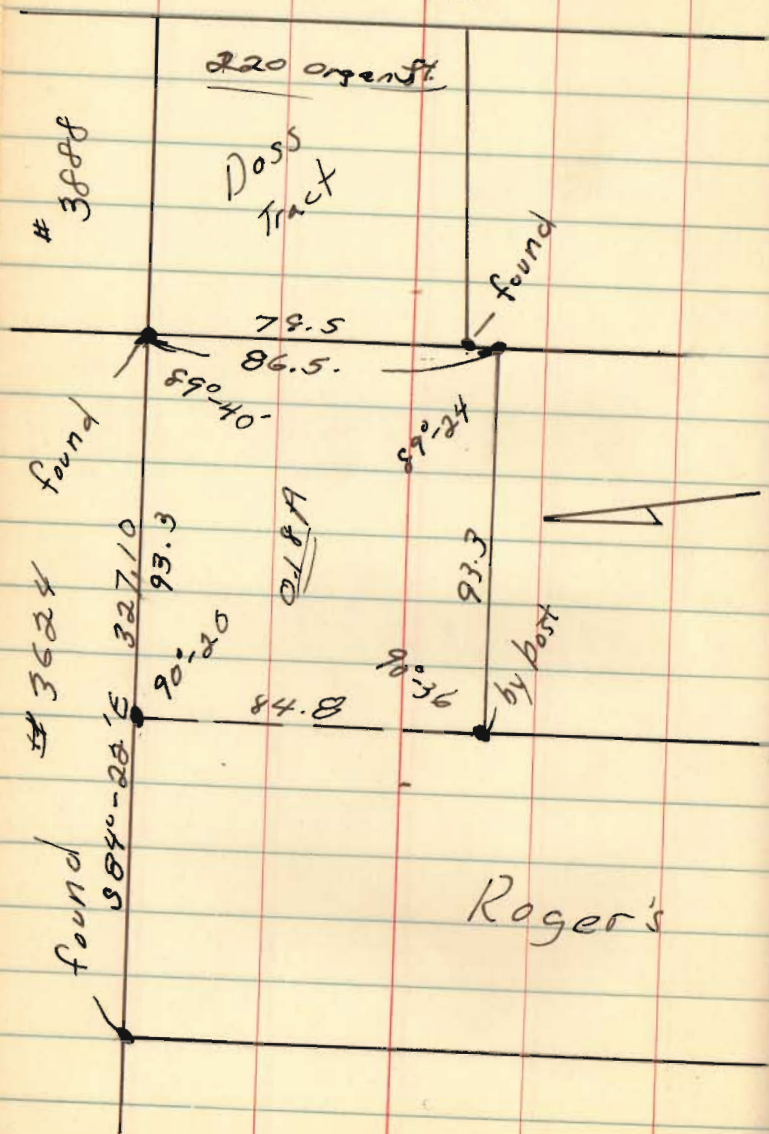
Sta. 440+72.7
See Co. Engr.
F. B. 582; pg 31



4200

INDEXED ON MAP

Rogers to Doss
V.M.S. 4478
Bellefontaine, O.
Organ St.



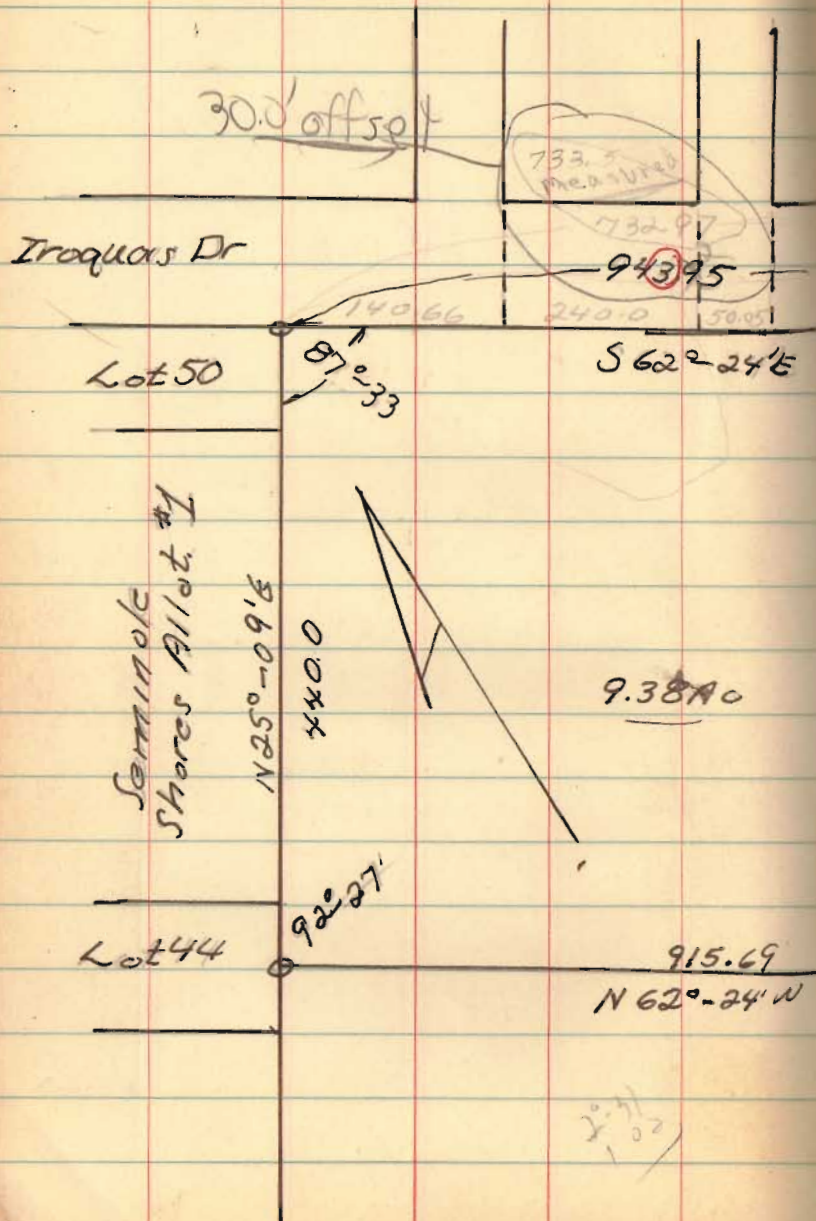
Sept. 28, 68

64

4307

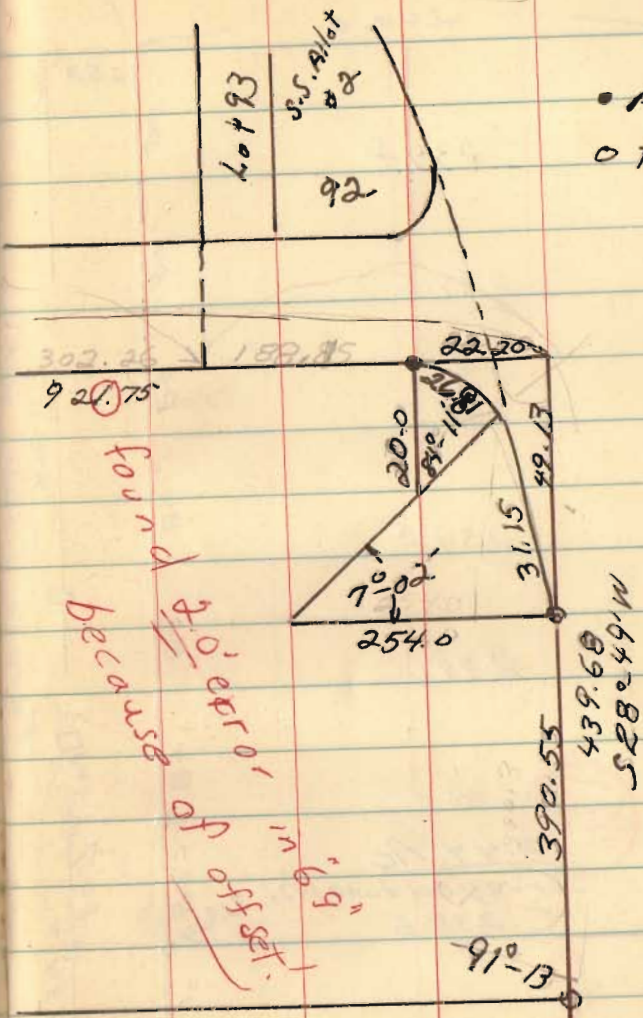
INDEXED ON MAP

Johnson to Immel
 P.M.S. 12276; Stokes Twp
 Seminole Isl.



Oct. 12, 1968

66



found because of error, offset to appear, "9' in" "6' 5"

4308

INDEXED ON MAP

W. Himmel
Seminole Isl.

Future Seneca Dr.

240.0

25.0

239.8

84

239.6

84

239.7

84

239.2

84

239.0

84

238.8

84

0.44 Ac
Surveyed June, 1971
92234

238.6

80.7

54.0

Future Snow Dr

550.0

100.0

0.54 Ac Surveyed
Sept., 1970
92234

238.4

100.0

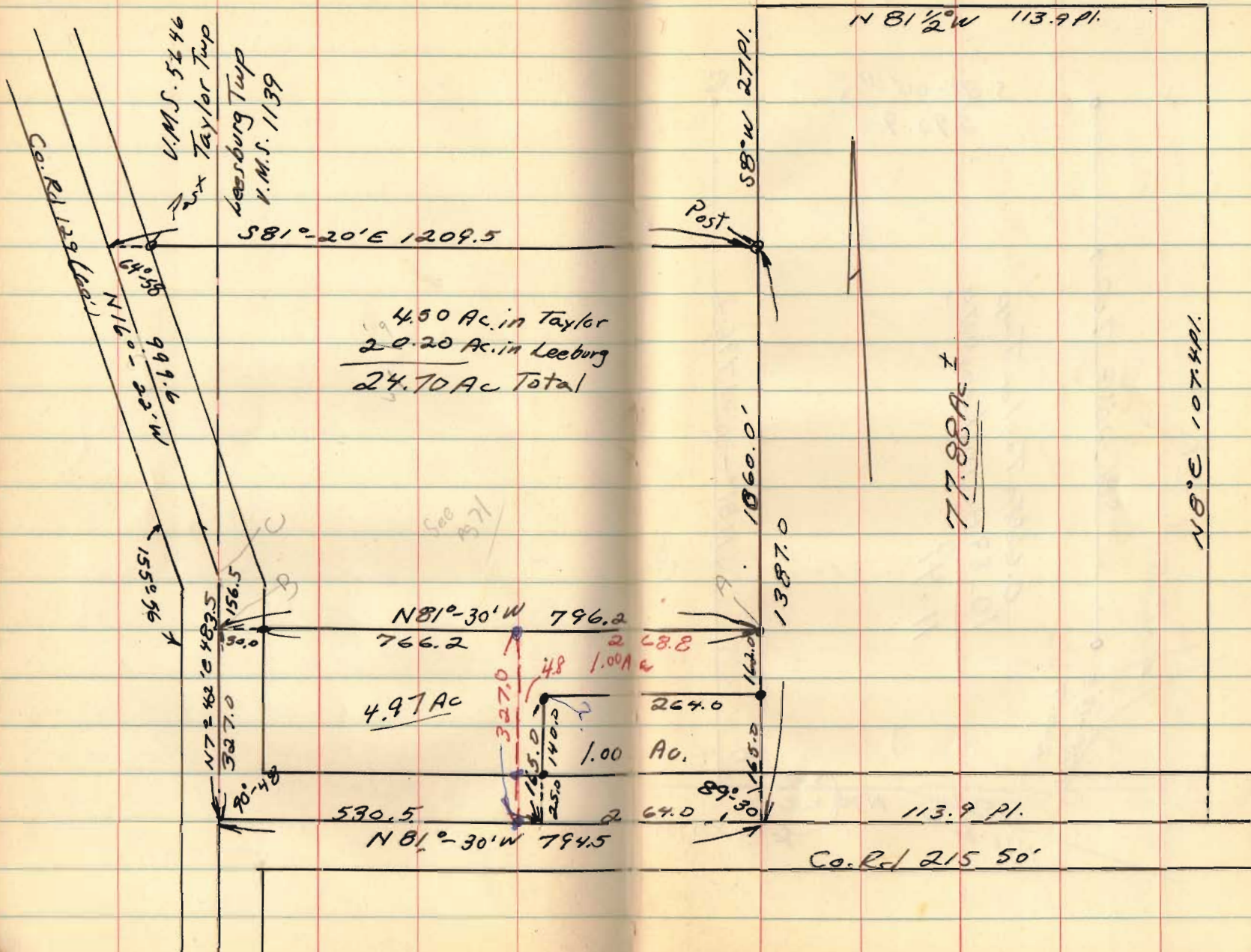
100.0

25.0

G. Draggnette
Seeps 44

INDEXED ON MAP

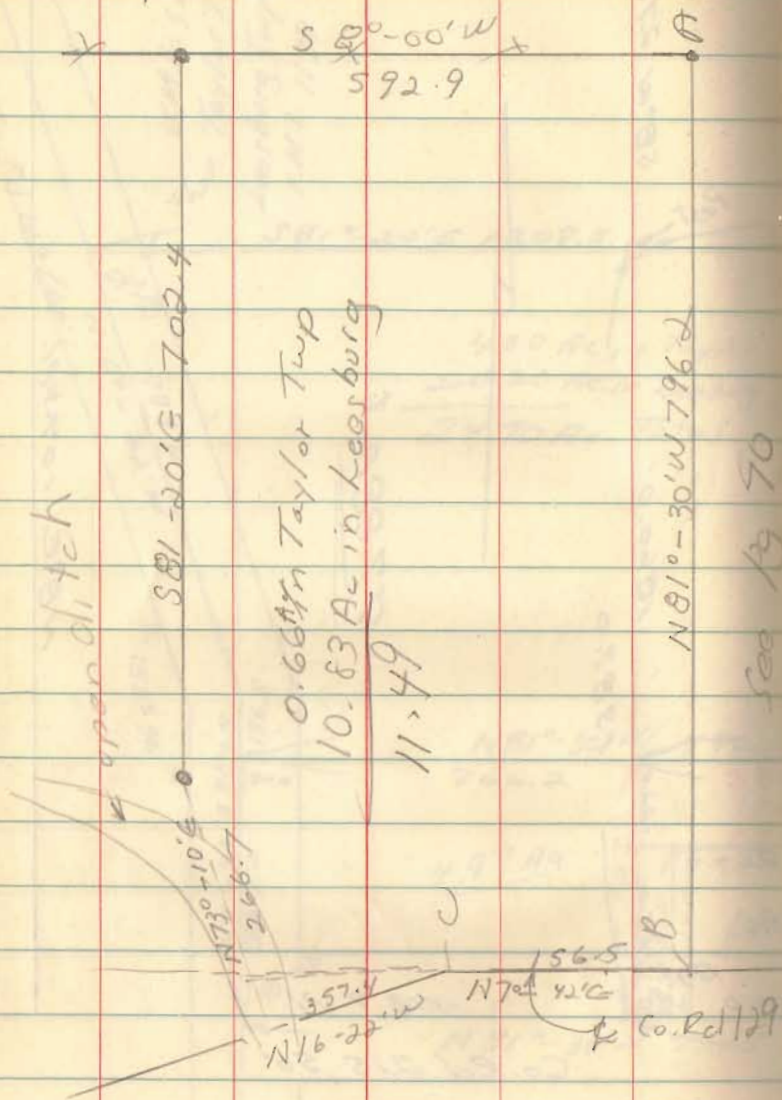
4743



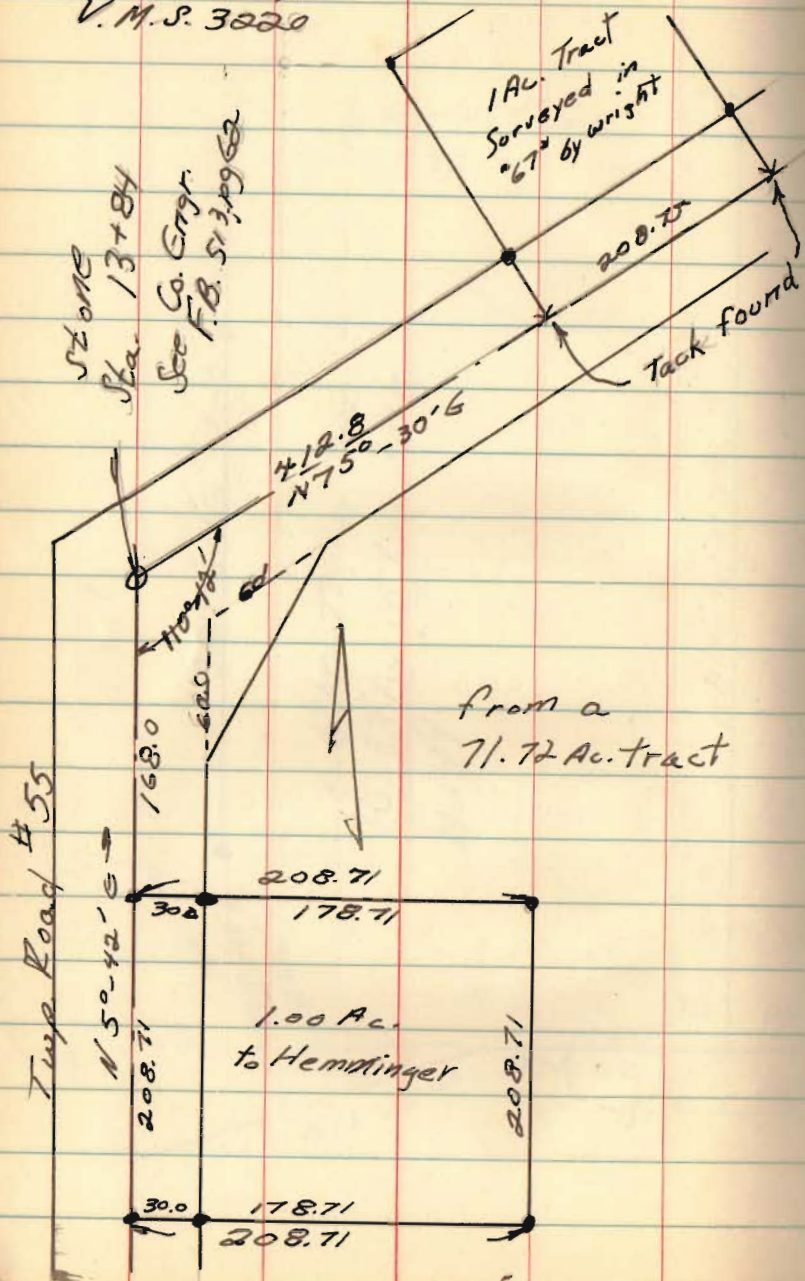
wingfield

8-26-71

71



Myers to Heminger
 Jeff. Twp.
 V. M. S. 3020



Feb. 8, 1969

72

1384

030.4

7536

376.7

376.9

208.7

168

376.9

Twp Rd 55

32+74

2 of Co. Rd 10

4485

N 31°-58'-6"

21+97.5

INDEXED ON MAP

Stone

53°-30'-6"

N 75°-30'-6"

13+84

Stone

69°-48'-12"

N 5°-42'-6"

6+30.6

Stone Myers Tr

0-16.4

N 5°-38'-6"

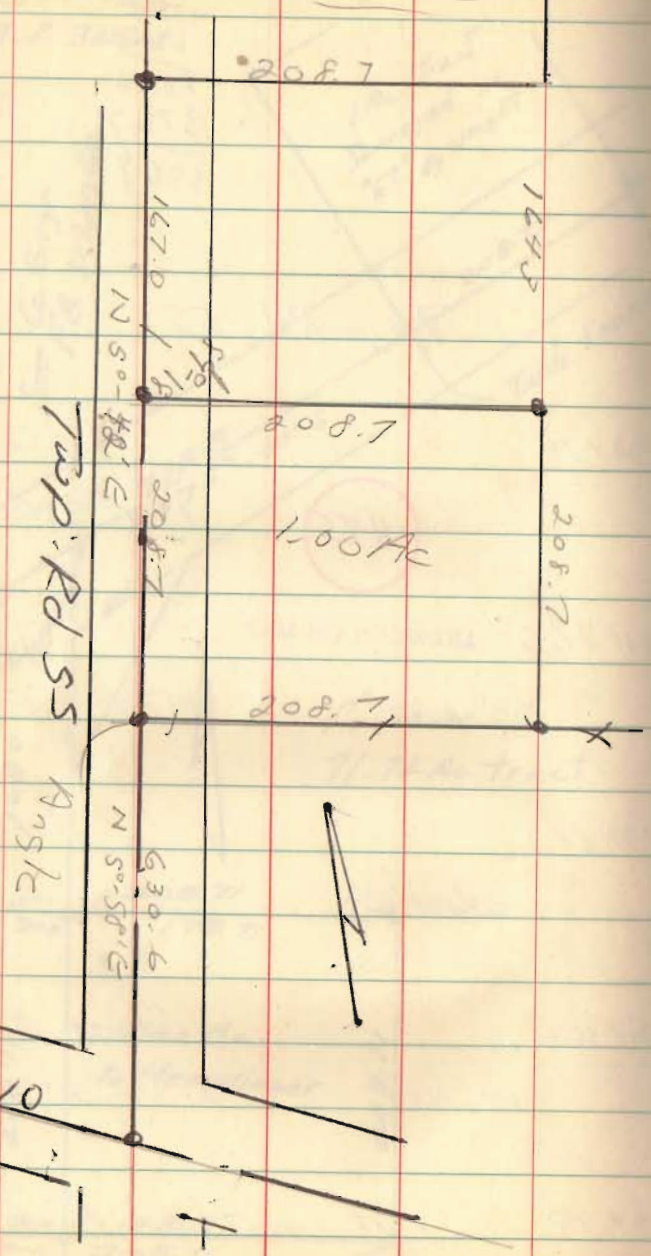
0+00

Int. with Co. Rd 10

Myers 1.00 Ac

Aug 11, 72

V.M.S. 3220
L.H. Twp



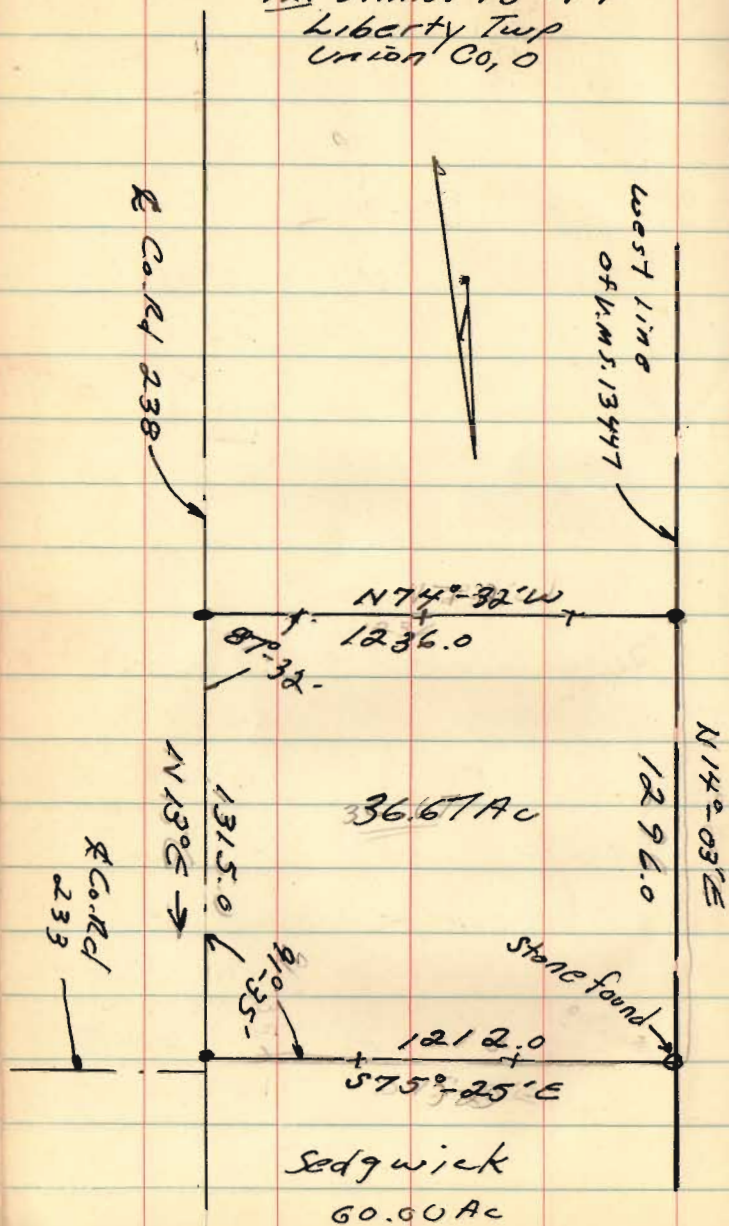
5099

INDEXED ON MAP

Homer S. Green Survey
 for
 Larry Coors
 1A, V.M.S. 13447
 Liberty Twp
 Union Co, O

Nov. 8, 69

75



Old fences was used
 on the South, west &
 north sides.

One stone was found at
 the Northwest corner.

Surveyed from a 40.00
 ac. tract.