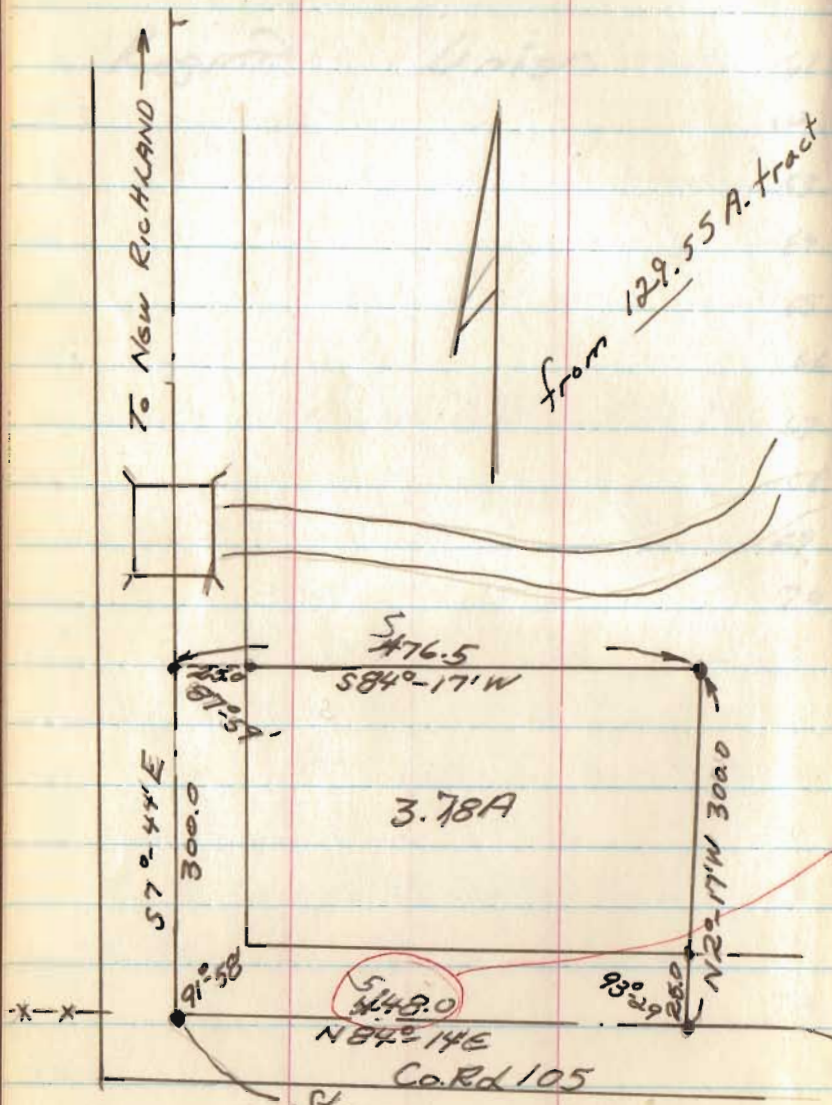


W. Aiken's
 V.M.S. 9950
 Richland Twp.

Aug. 18, 1967

1



Sta
 See Co. Engr. F.B. 511; pg

D.P. said I was off 100' (1.171")
 548.?

4140

INDEXED ON MAP

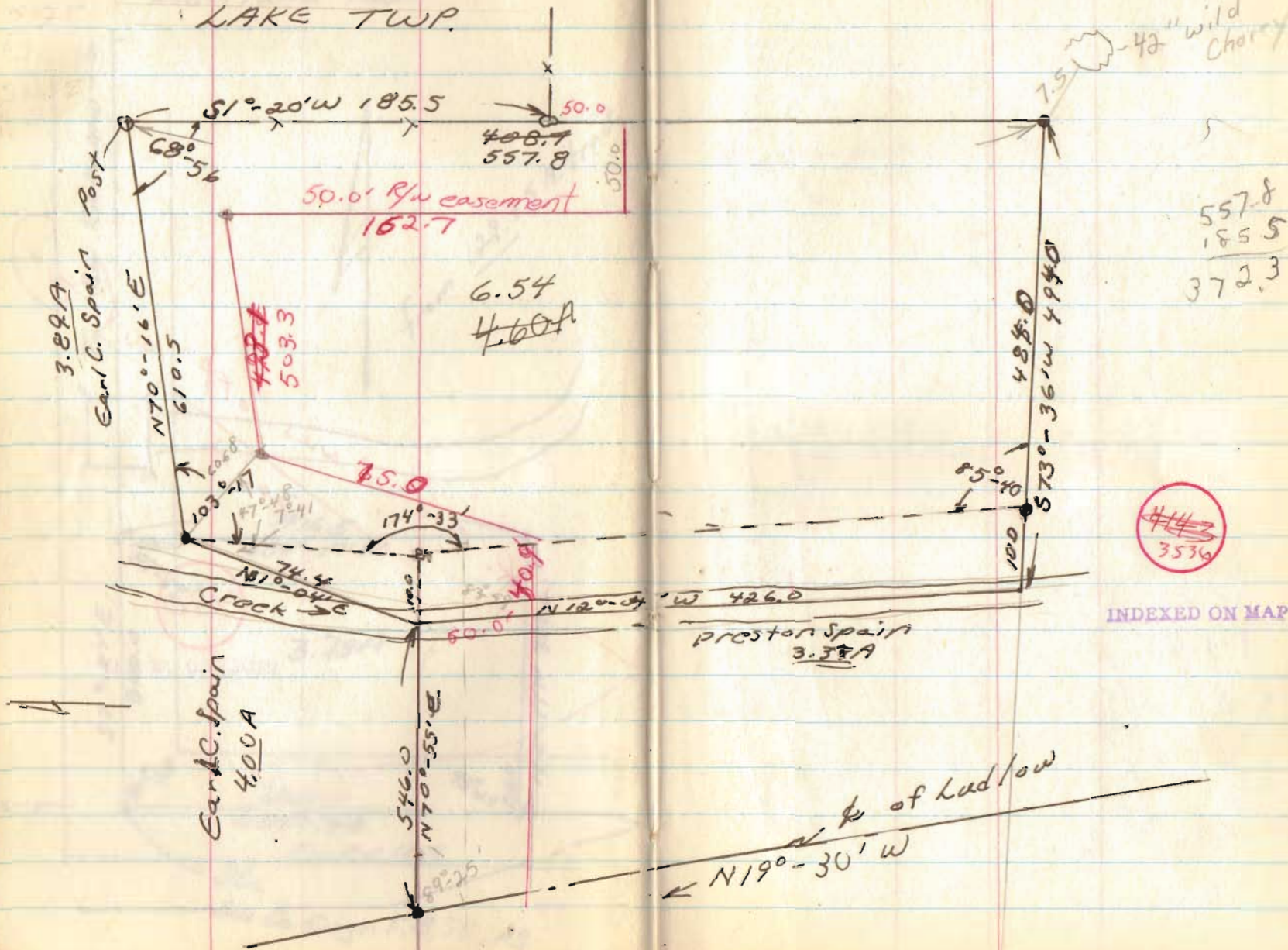
P. Tillman to T. Tillman

V.M.S. 10086-10198

LAKE TWP.

Aug. 21, 1967

2



557.8
185.5
372.3

~~4143~~
3536

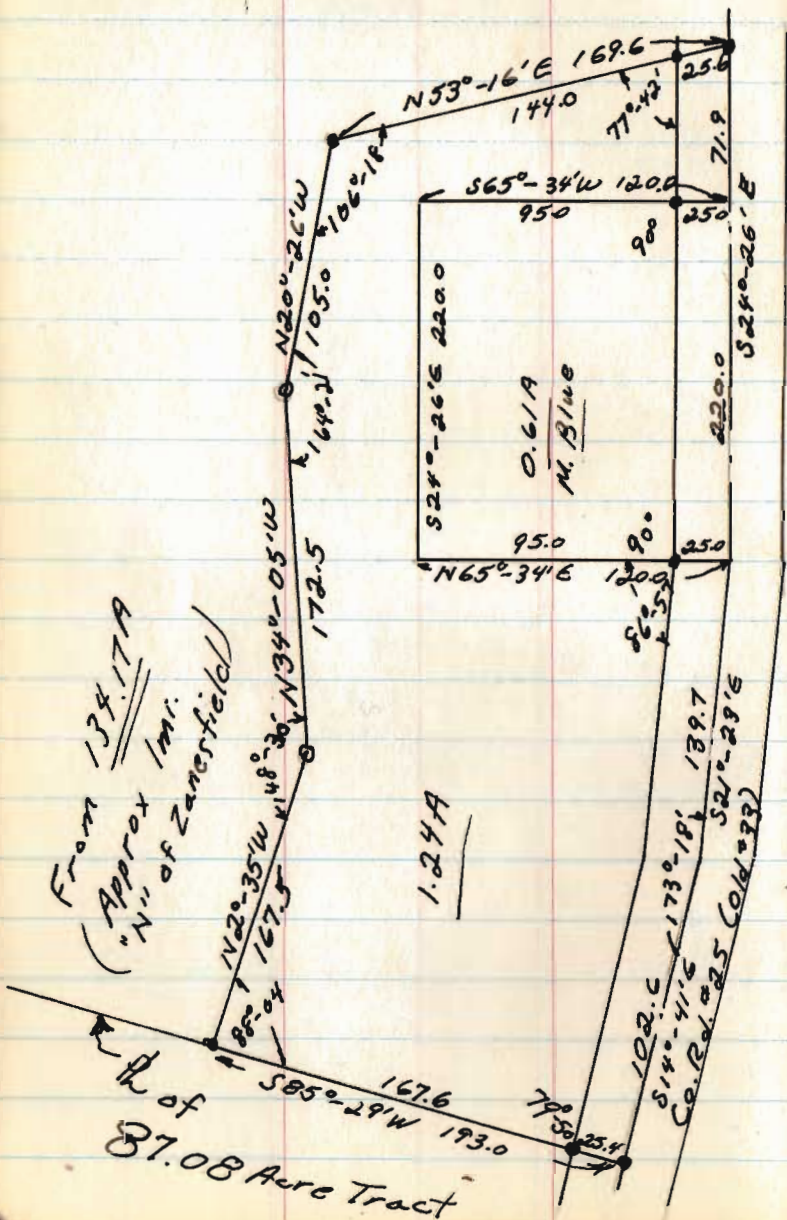
INDEXED ON MAP

$N19^{\circ}30'W$ of Ludlow

Rash to Blue
 V.M.S. 3139
 Jeff. Twp.

Sept. 16, 1967

4



4142

INDEXED ON MAP

Stover to Aiken
 V.M.S. 9907
 McArthur Twp.

Sept. 67

5

See Co. Engr. F.B. 666, pg 74
 West Line of V.M.S. 9907
 S10°-44'E

17065

1803.1 →
 to NW cut

44.37A

N79°-35'E
 1449.0

PI-168+27.8

384.9
 S26°-03'W

R.S.R. 638

See Plans
 439

341.7
 334.7
 390.4

R.S.R. 68

126.2
 S54°-30'W

150.2

N81°38'E

Sta 176+11
 R/W Plans W-3

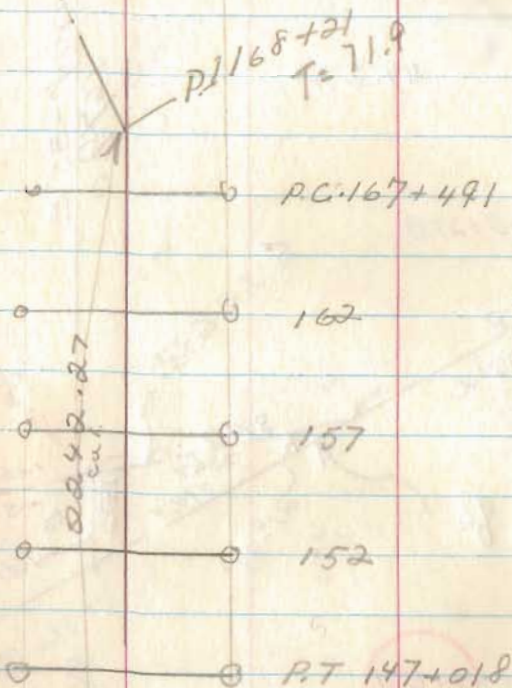
4144

INDEXED ON MAP

384
 167

310.0
 100°-08'
 1617.4
 N42°-06'W

Copied from
L-18



P.I. 145+81.2
D=19°30'
T=123.07

6

Copied from
W-3

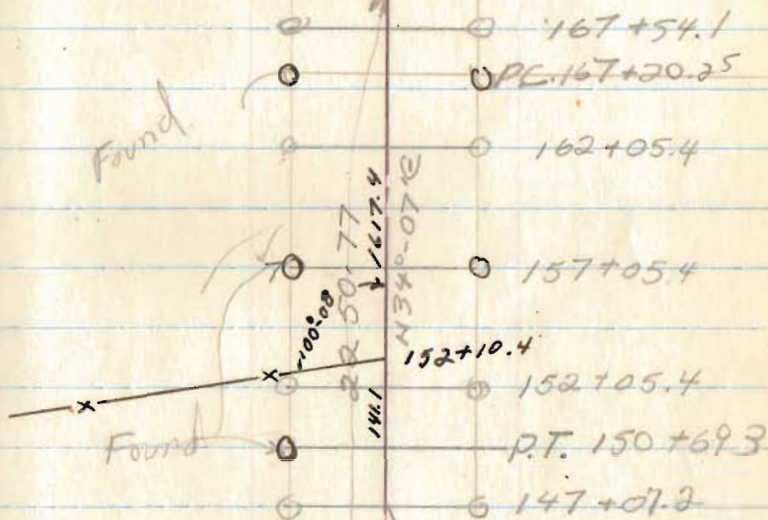
Place Mon. & cal.
from L-18

514.7
500
485
107.6
1617.3

P.T. = 169+35.250

P.I. 168+27.8
T=107.55
D=4°18' LT.

Found



INDEXED ON MAP

P.I. 145+81.2
D=19°30'
T=49.27

150.69.3
141.2
158.27.5
152.10.4
316.17.4

Dodds

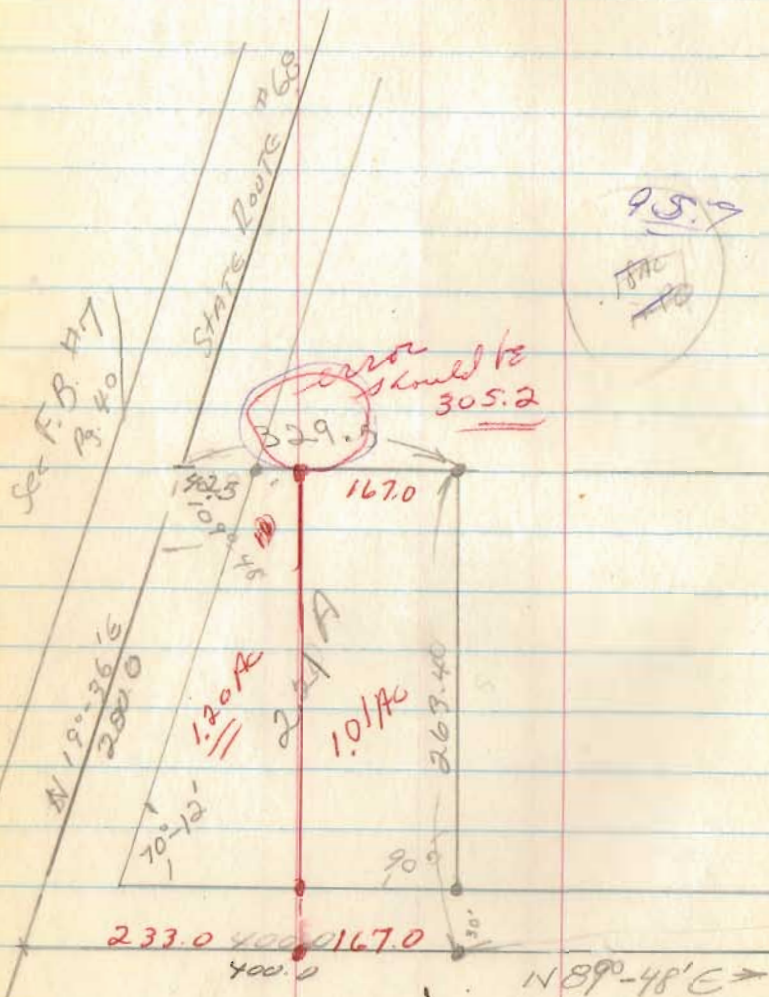
V.M.S. # 9884

McArthur Twp

Oct., 67

8

See Bk 7, pg 40



4145

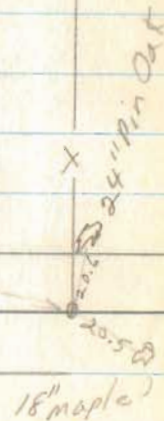
INDEXED ON MAP

120°

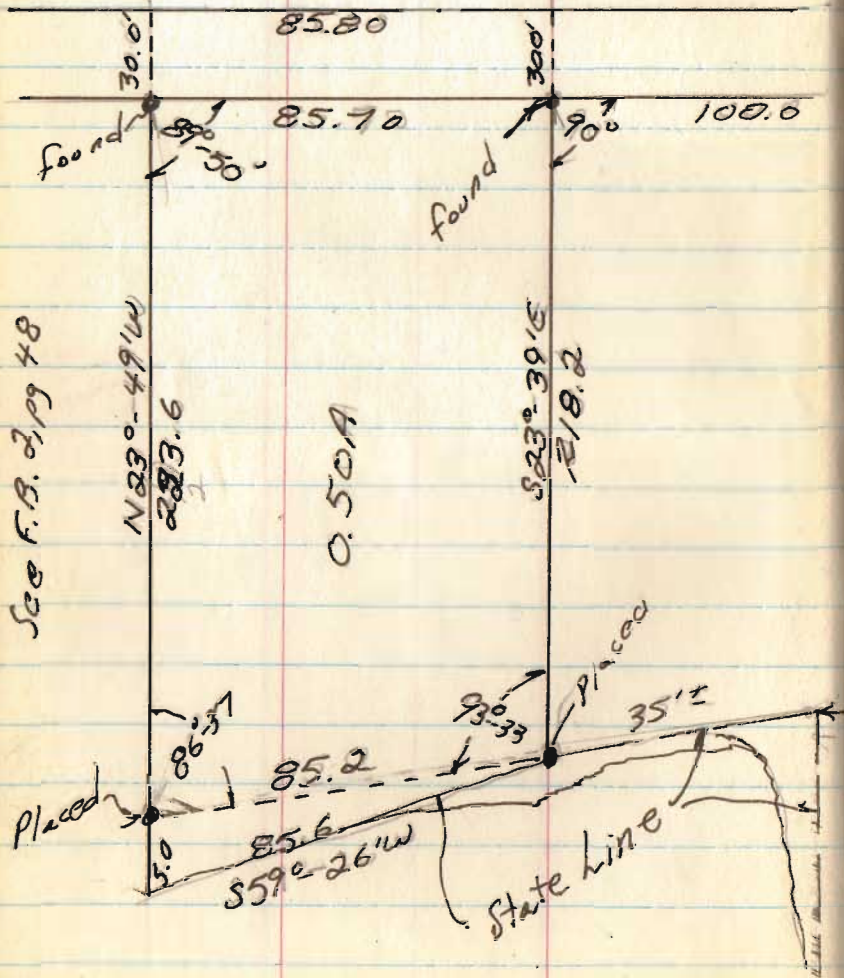
Co. Rd 57

See Co. Engr. F.B. 559

Pg. 62



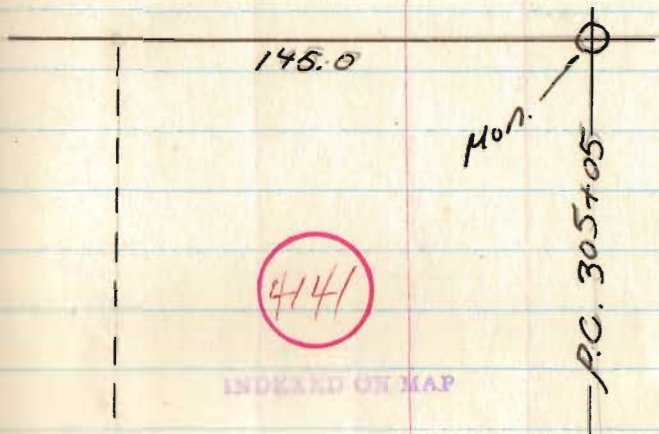
M. Beatz
 U.M.S. 12277
 Richland Twp.



Oct., 1967

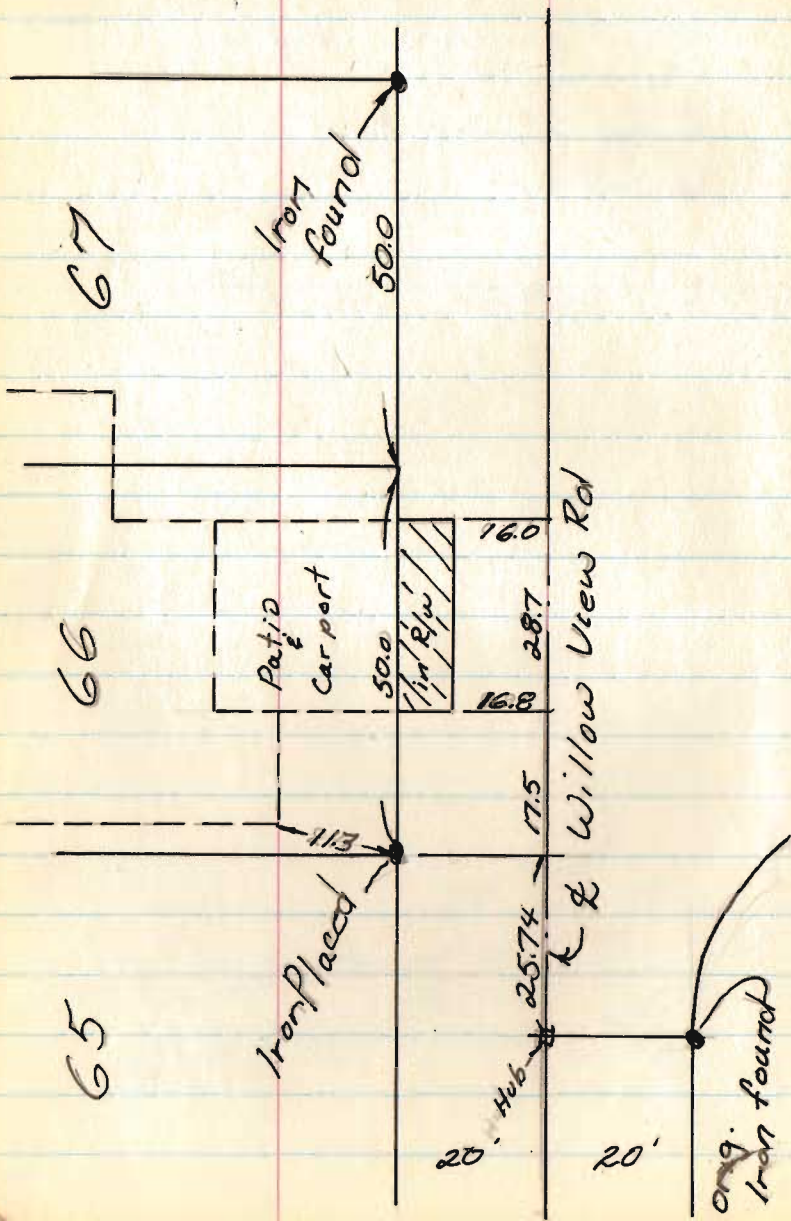
10

STATE ROUTE #68
 N 66° - 21' E →



This pt was replace by me
 after orig. set because of error
 made by self.

Right of way by lots 66 & 67
 Willow View Rd. - Fernwood Subd. #1
 Long Isl.; Indian Lake



Nov. 11, 67

12

for Don Hilliker

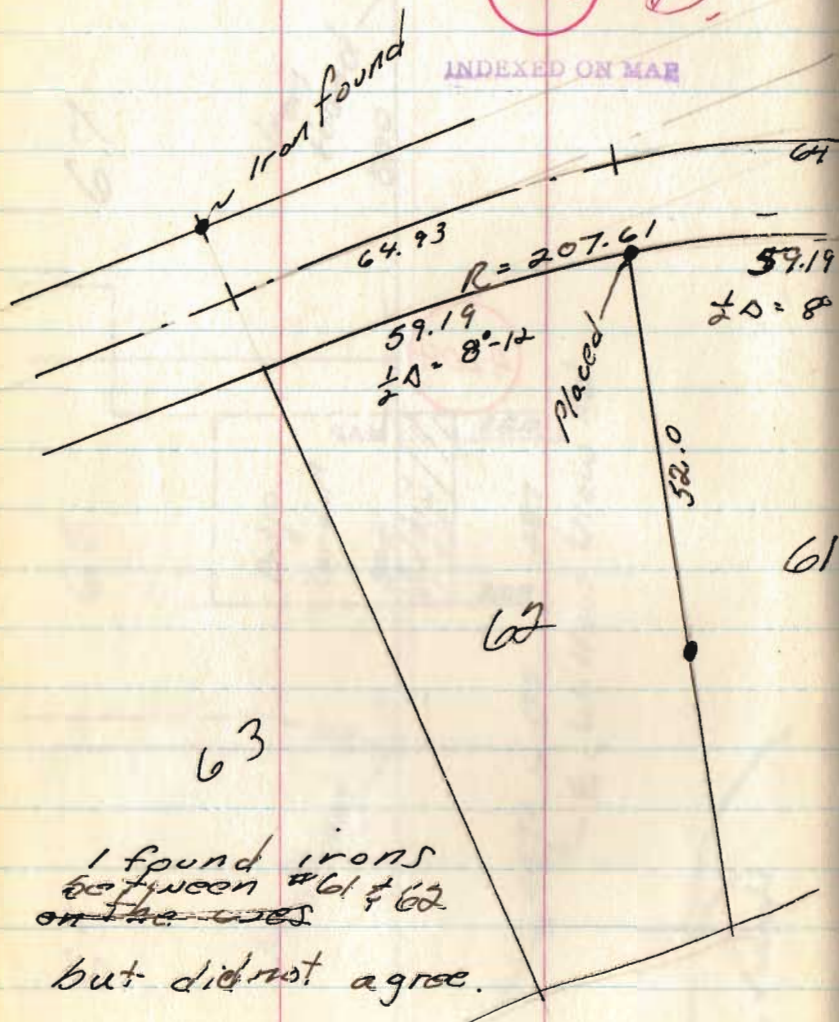
4204

INDEXED ON MAP

Lots 61; Fernwood #1
Long Island

65317 - B

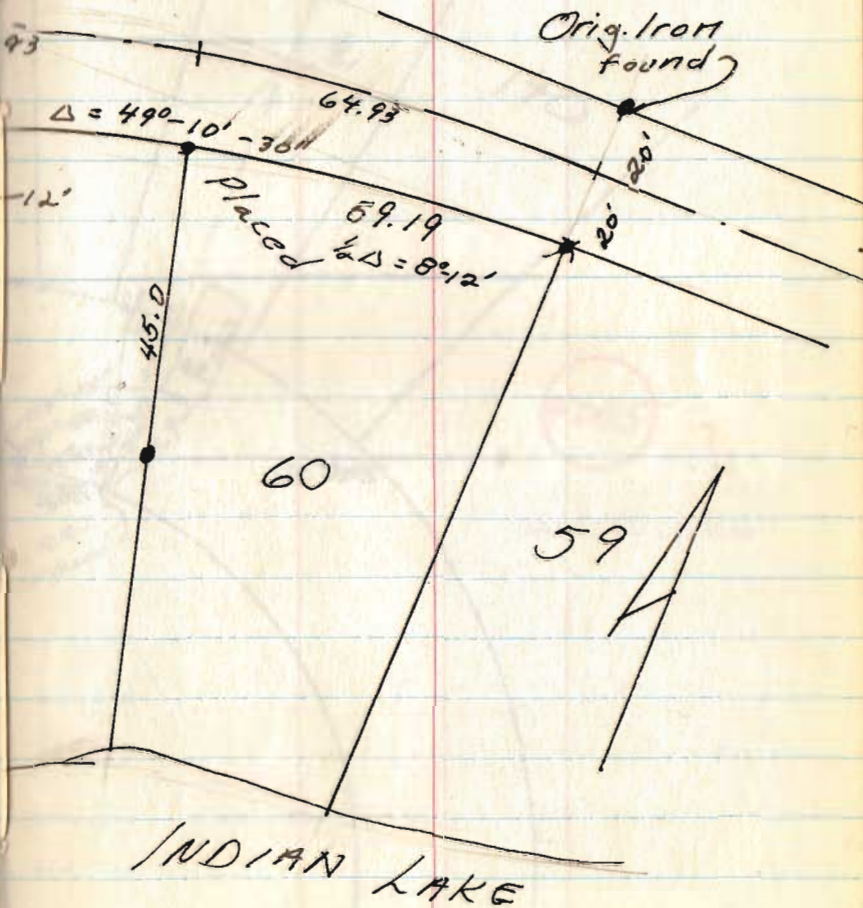
INDEXED ON MAP



Nov. 4 & 11, 67

13

All dist. on curves
are chords.

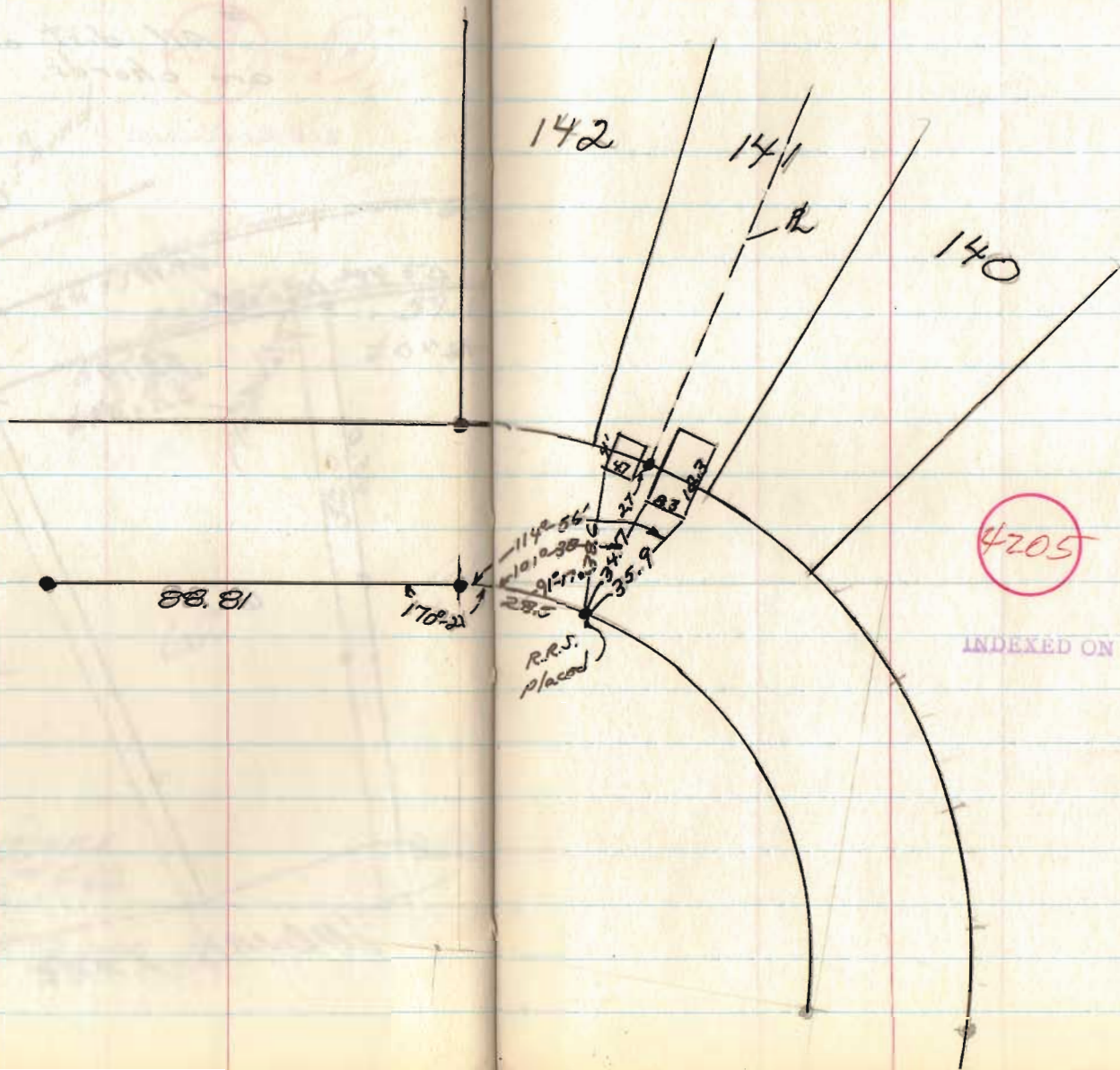


Lot 141, Ferriswood #2
Long Island

Nov. 11, 1967

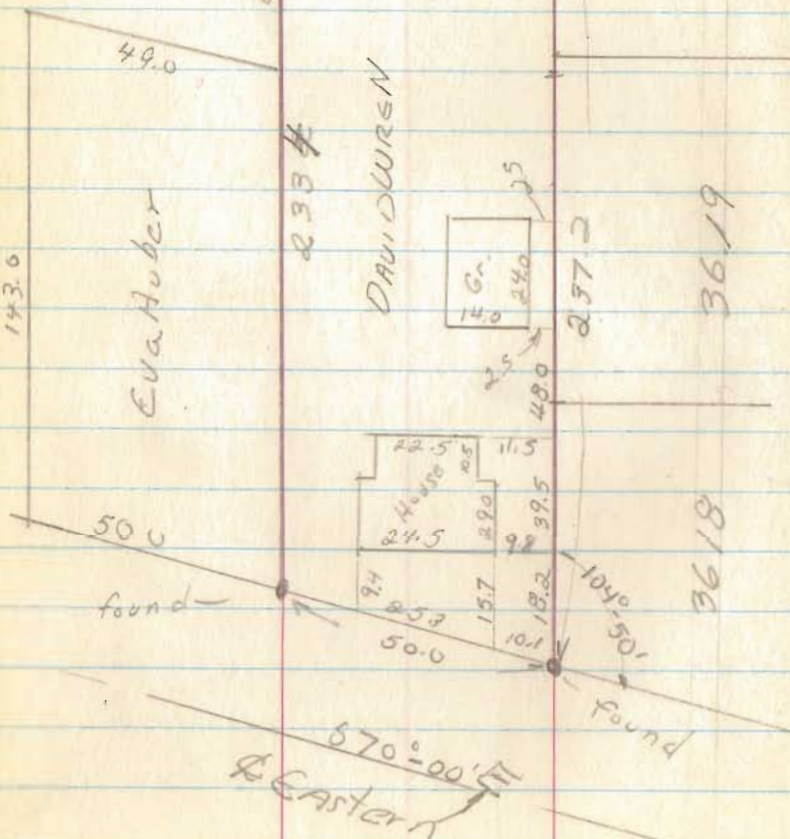
14

For. Don Hilliker



DAVID WREN
 Bellefontaine, O
 See Sheet 165

See Mills Dead
 Found
 Vol. 15, p. 597



Dec. 2, 67

16

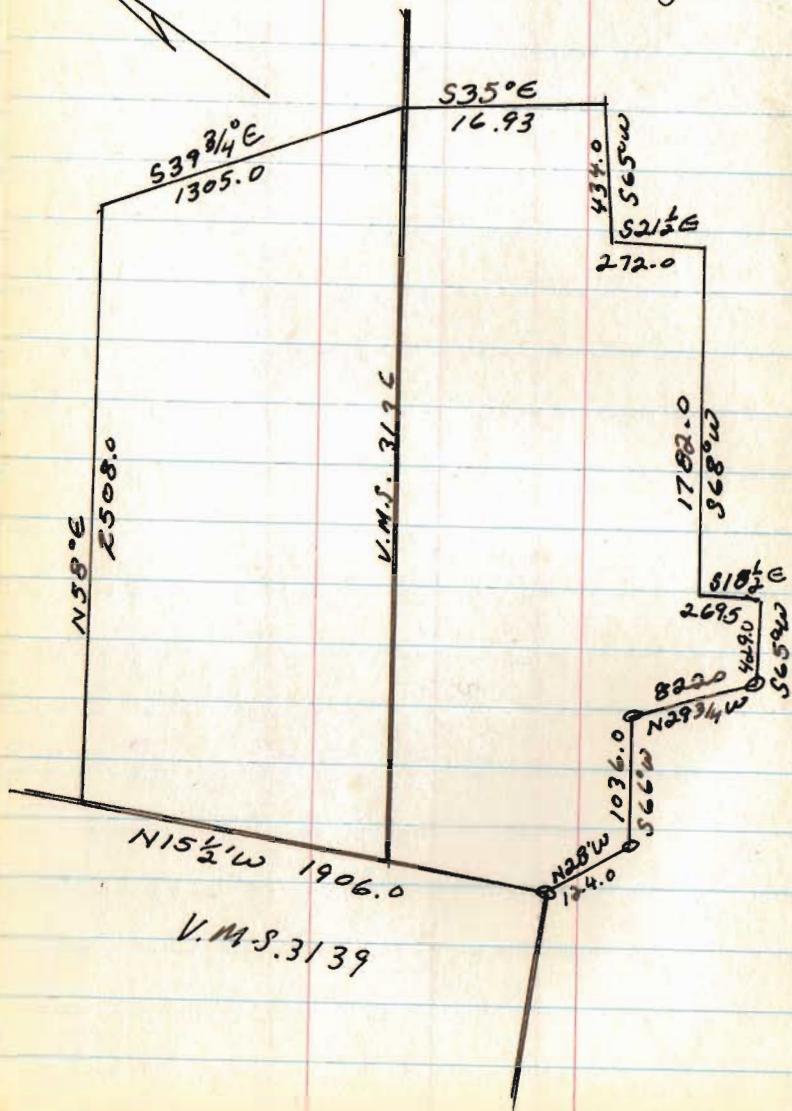
V.M.S. 4475

4159

INDEXED ON MAP

For Homer Taylor
Jefferson Twp.

Copy of Deed Vol. 160, pg 321

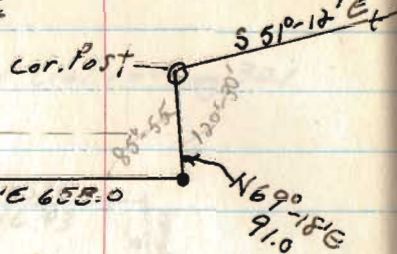


18

4181

INDEXED ON MAP

Homer Taylor
 Jefferson Twp.
 V.M.S. 3136 & 4948
 9423
 9574



51-21 A

See pg 18
 for orig. Deed

4181

INDEXED ON MAP

Because of terrain, stone by Post
 5 ft from W side were 3
 side were measured
 but bearing Cal with
 use of old deeds
 Stone

No evidence
 of this corner



Hub 1/2 west of line
 V.M.S. 3139

Dec. 9, 1967

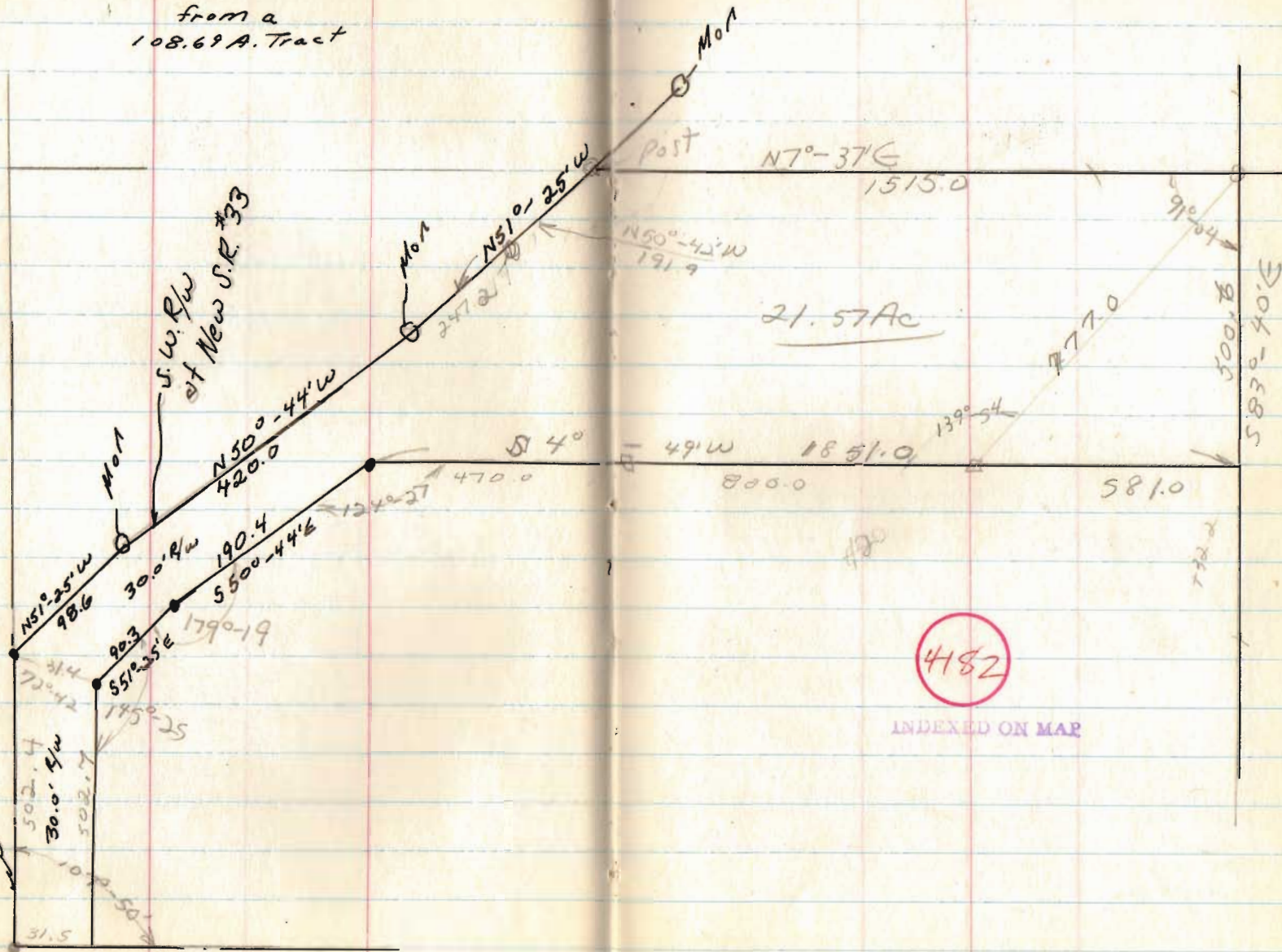
19

C. Myers to Hostetter
 V.M.S. 3220
 Jefferson Twp
 from a
 108.69 A. Tract

Dec, 1967

22

of abandoned Township Rd #180

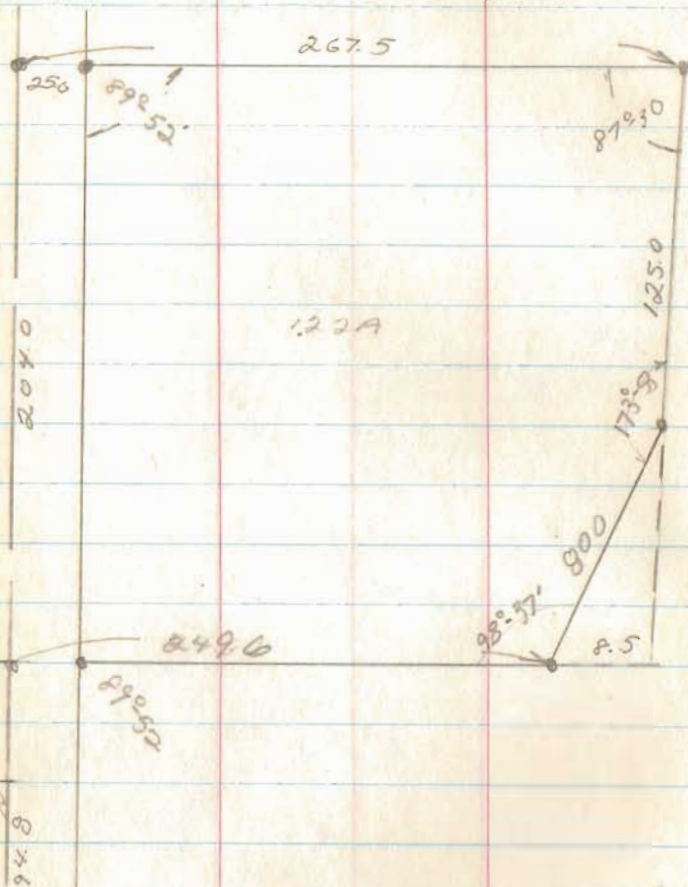


Crim Survey
 Sec. 23, T-3, R-14
 Harrison Twp.

Jan 27, 68

24

Sec Center E.B. 216, Rg. 11
 West of Sec 23 (Also E of C.R. 31)



4184

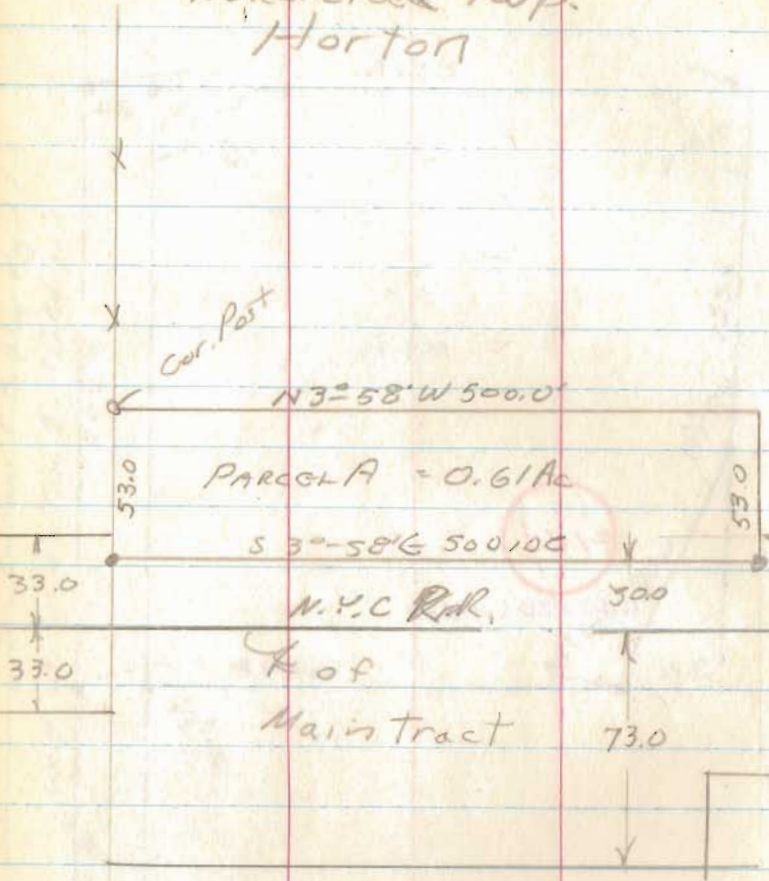
INDEXED ON MAP

$\frac{1}{4}$ Sec. Line

$\frac{1}{4}$ Sec. Stone
 SW. cor of N.W. $\frac{1}{4}$

4184

T 50.C R.R. N.Y.C. System
 V.M.S. 9914
 Bakercreek Twp.
 Horton

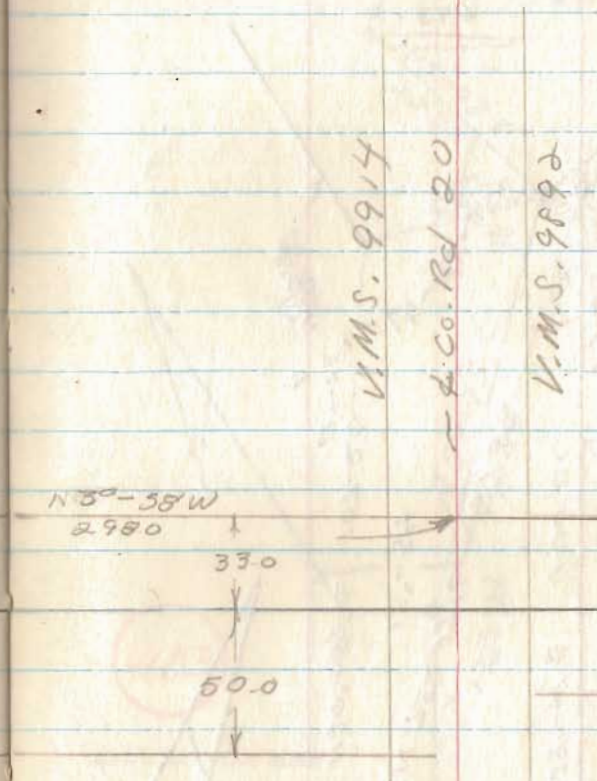


4183

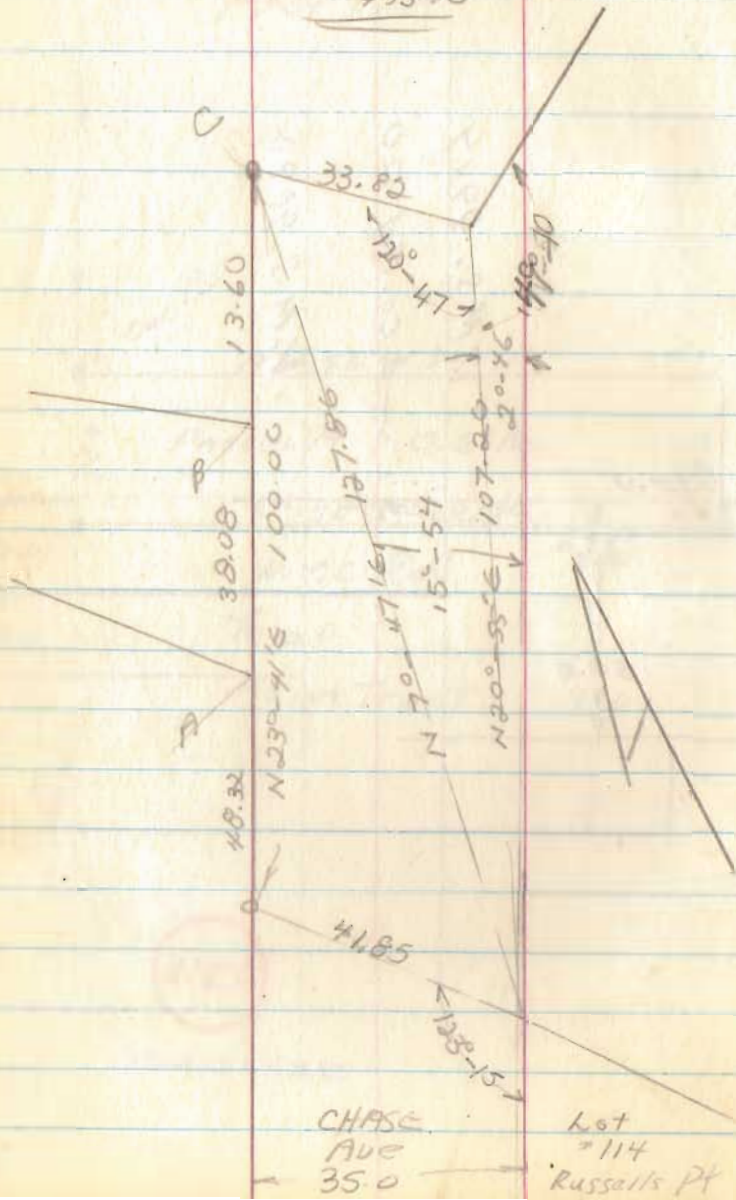
INDEXED ON MAP

Jan 27, 68

25

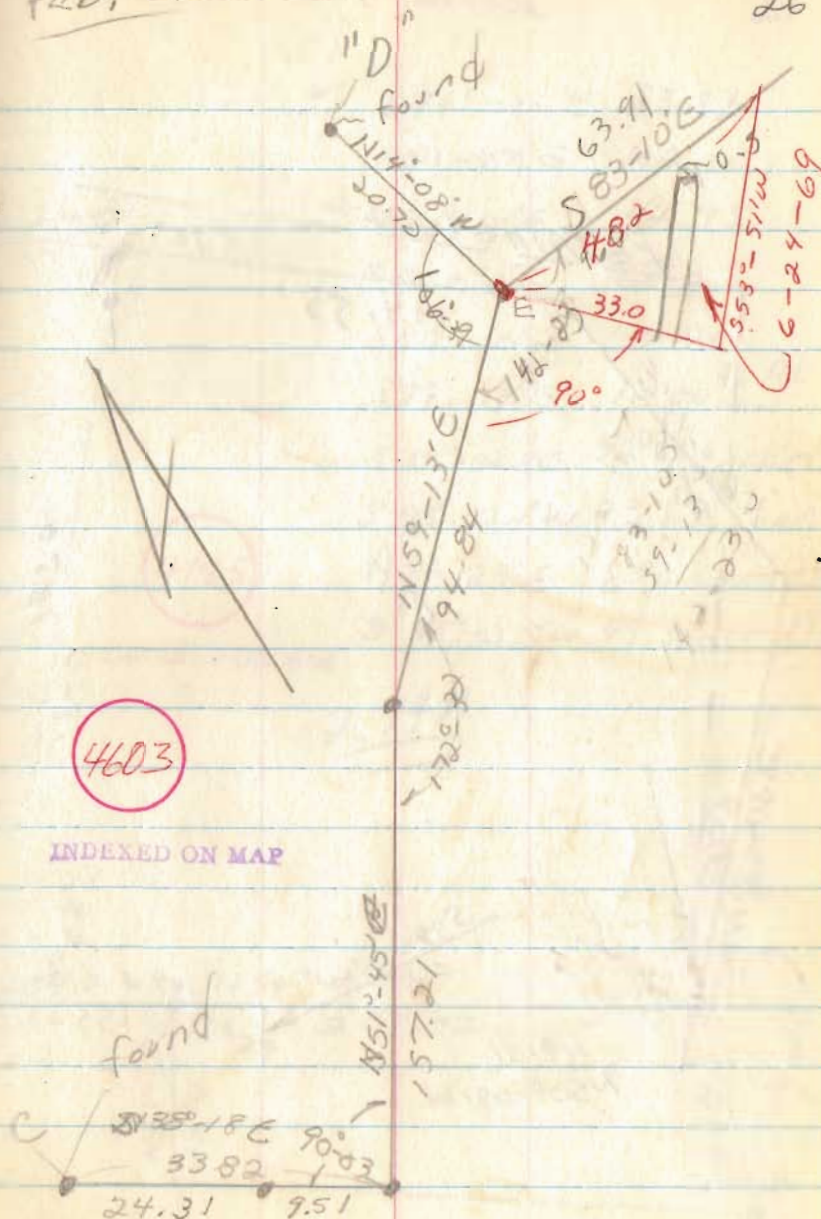


Quatman to
Schuler Marina, Inc
Box 308
Russells Point
43348

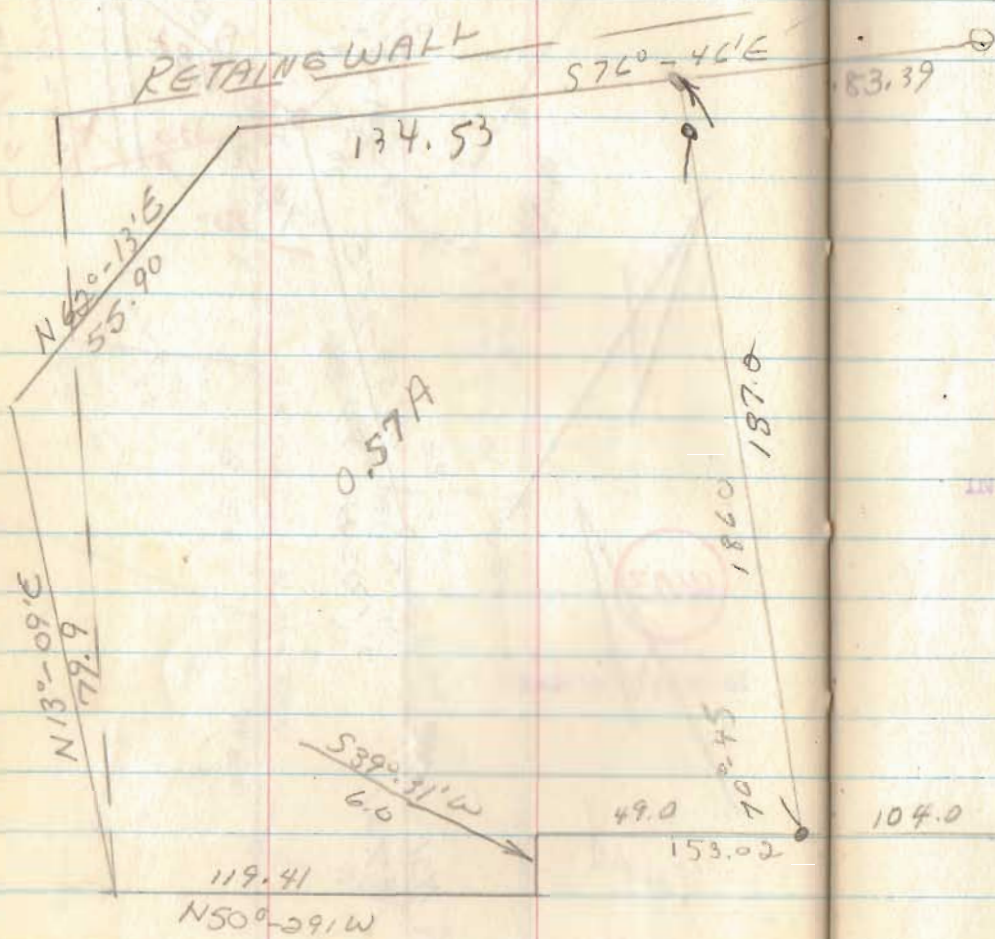


Feb, 3, 68

26



Schuler Marina

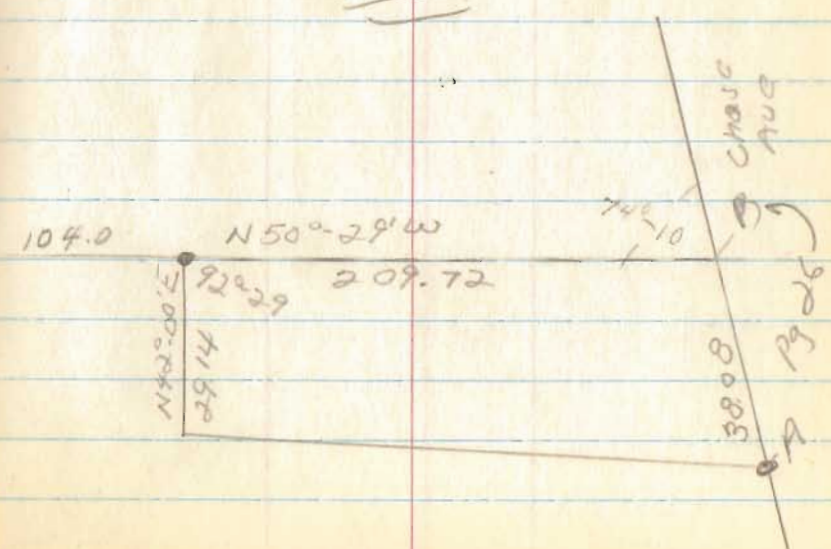


- S76°-46'E 83.39
- S80-47E 102.76
- N86°-14'E 44.75
- S66-52'E 68.05
- S80-46'E 112.01
- S79-17'E 12.00 ^{to PK} _{mail}
- S19°-02'E 92.80 iron
- S 48-42.3'W 23.87 iron
- S 42-23'E 870 Chisted
- S 38°-32.5'W 43.32 iron D

4185

INCREASED ON MAP

2.94A



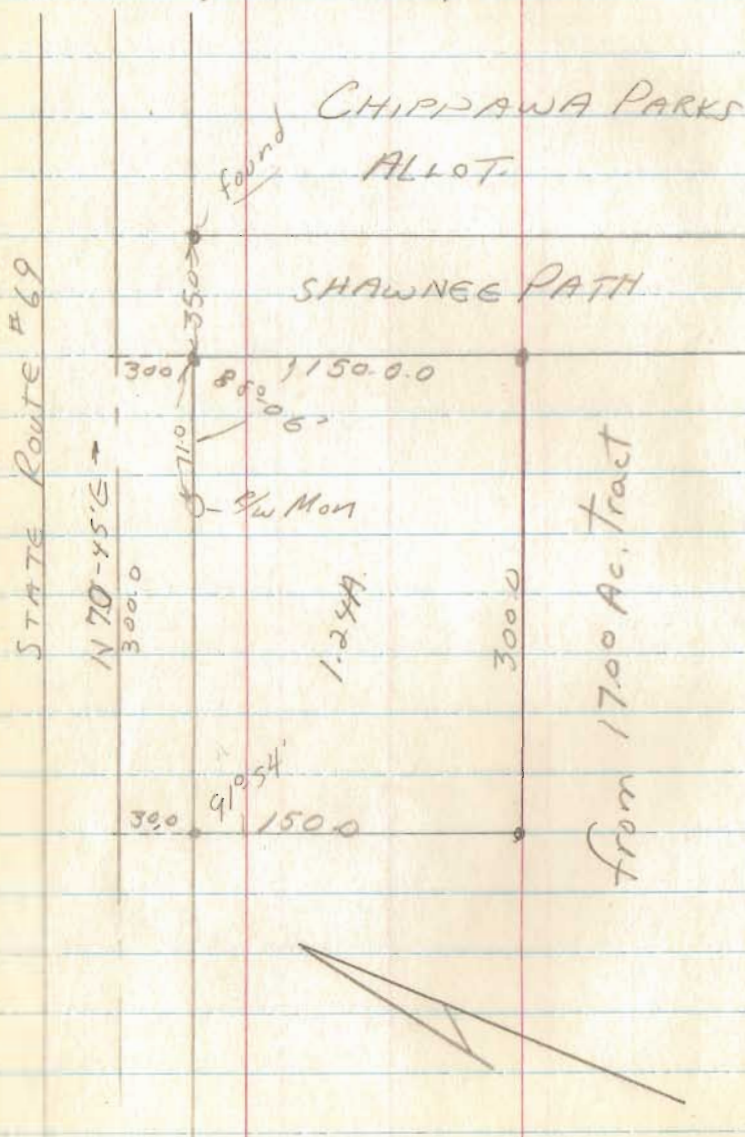
Byron Williams

Stoker Twp

V.M.S. 12276

Feb, 24, 68

29



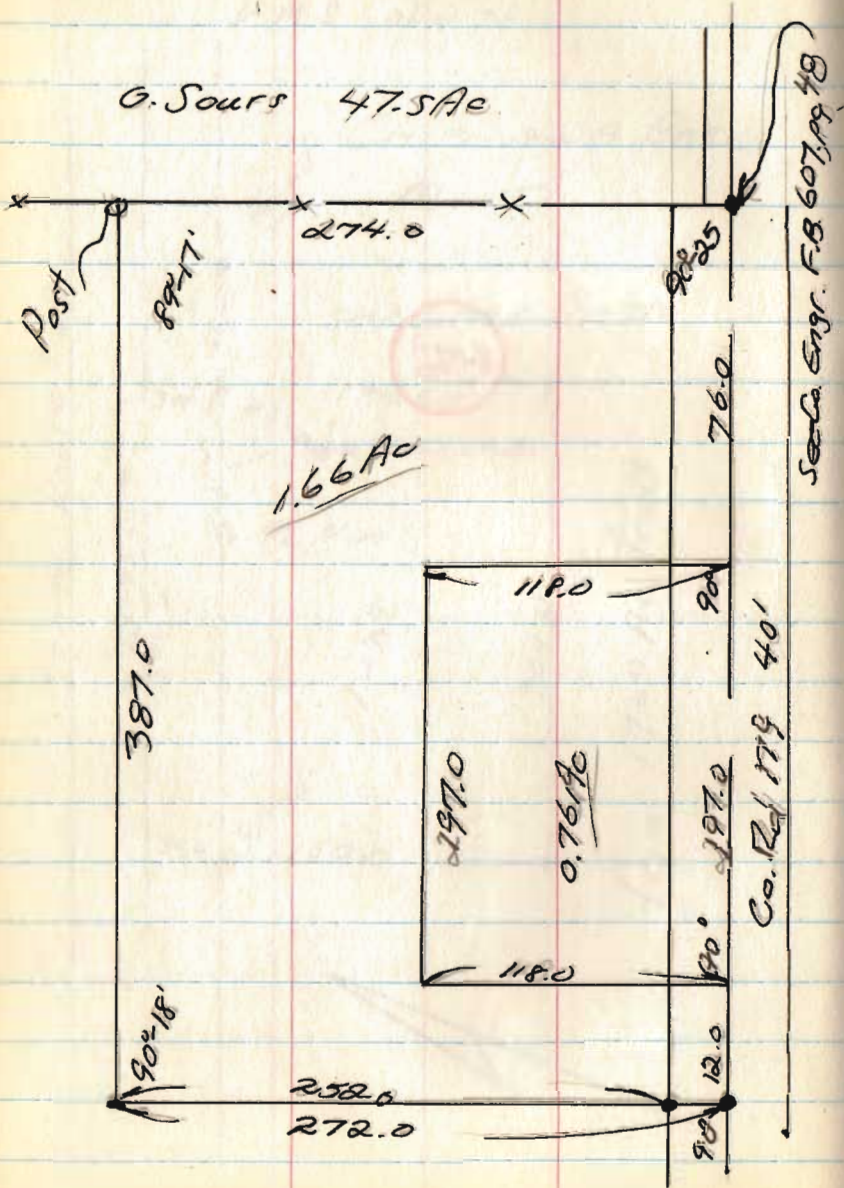
4186

INDEXED ON MAP

Henry Survey
Jeff. Twp; V.M.S. 4498

March 16, 68

30



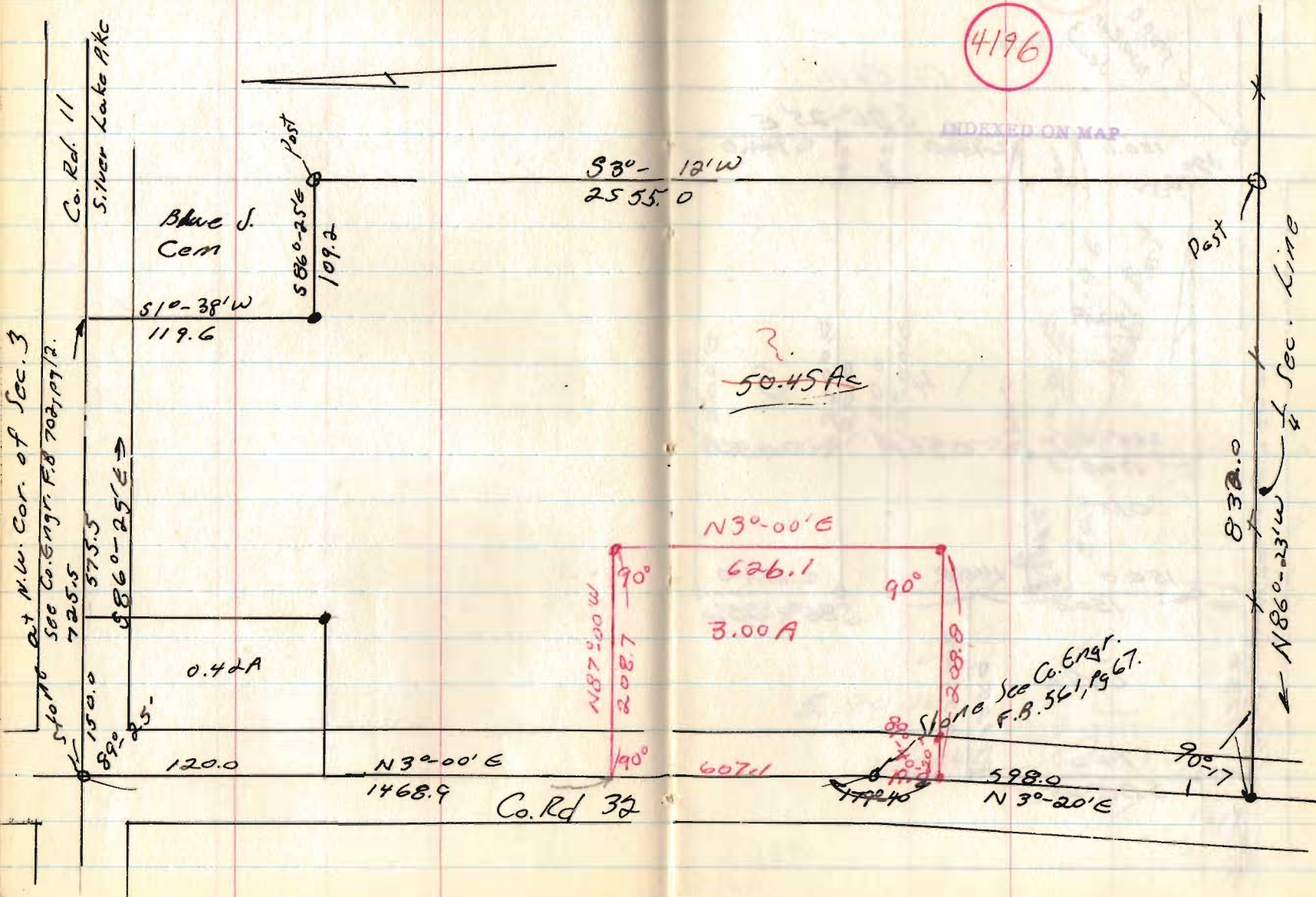
487

INDEXED ON MAP

Berry
 Sec. 3, Town 3; Range 14
 Harrison TWP

April 8, 68

32



Berry

See pg 32

4196

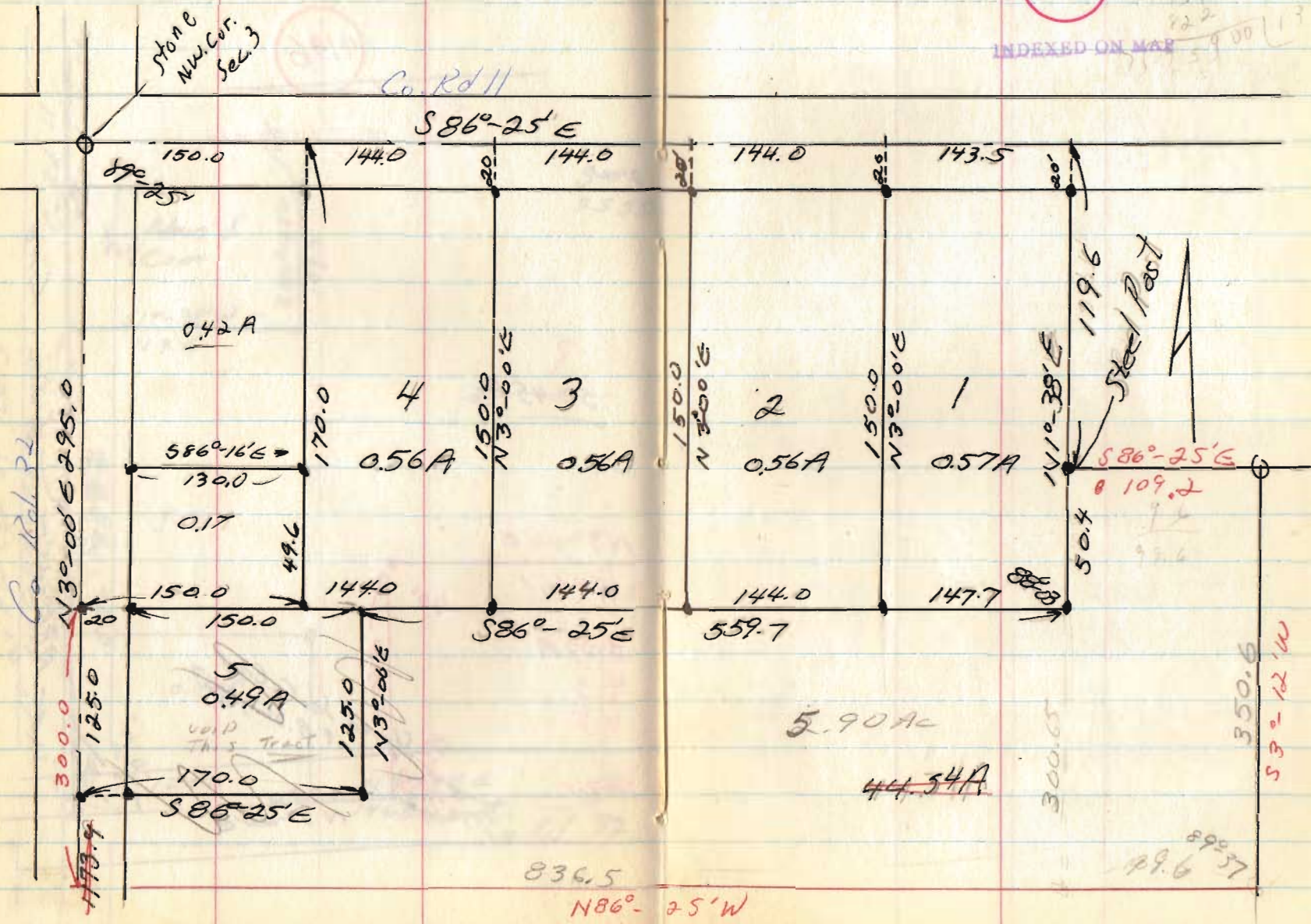
174
350
1370
222
5900

INDEXED ON MAP

Stone NW Cor. Sec. 3

Co Rd 11

S86°-25'E



89°37
49.6

44.54A

5.90A

VOID THIS TRACT

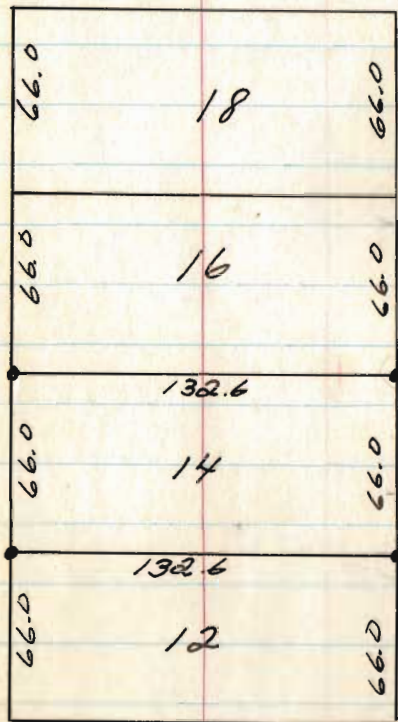
Roy Helmandollar, Jr.
Lot 14
Quincy, O

MIAMI ST 49 1/2'

R.R.S found

89° 56'

16 1/2' Alley



April, 9, 1968

35

Sec Co. Engr F.B. - 698 pg 37
" " " " 588 pg 37

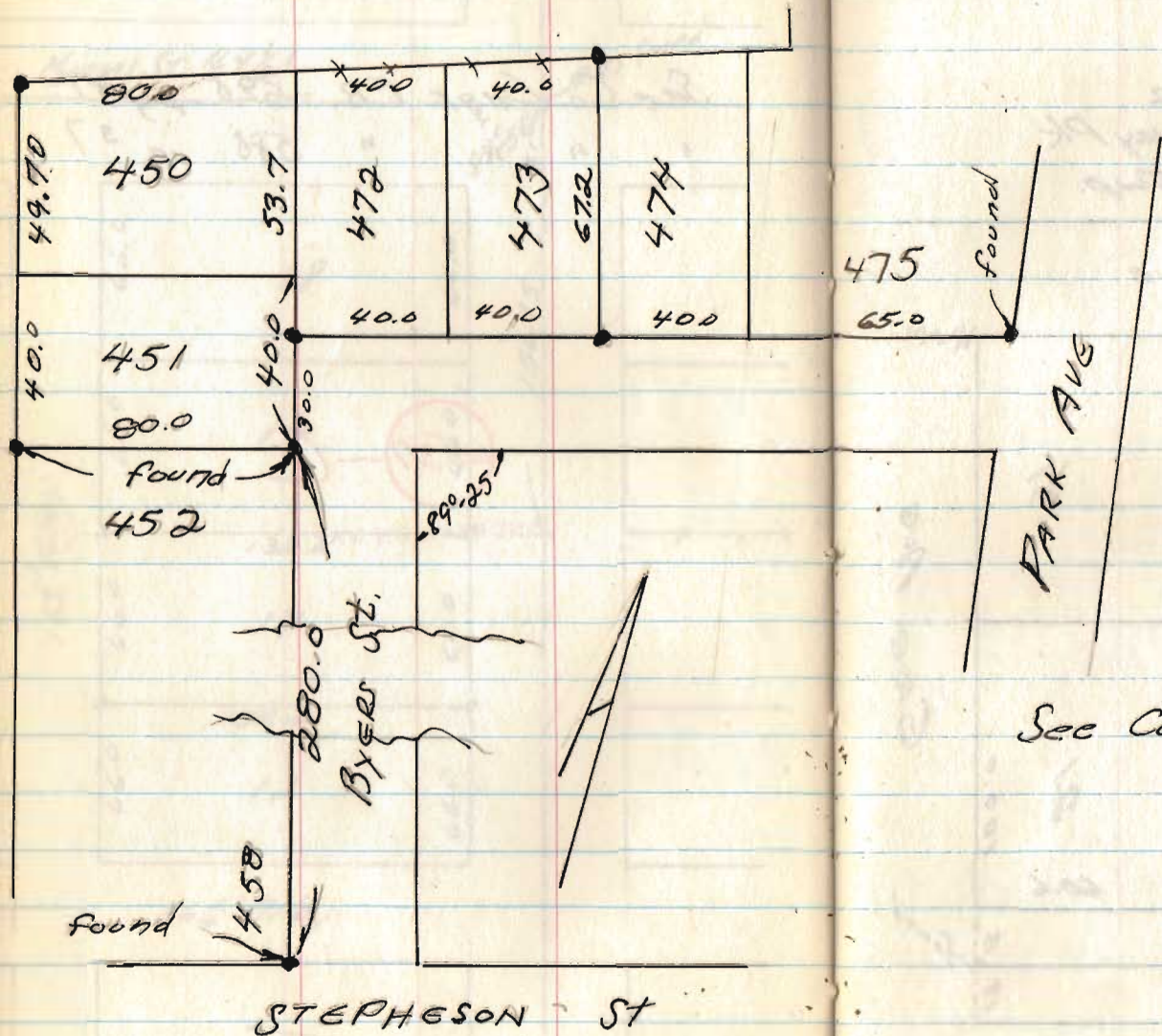
6537 - C

INDEXED ON MAP

Junior Hulbert
925 Byers St
Lakewood, O
Lots 450, 451, 472, #43

April 9, 1968

36



6538

INDEXED ON MAP

Sec Co. file 1581

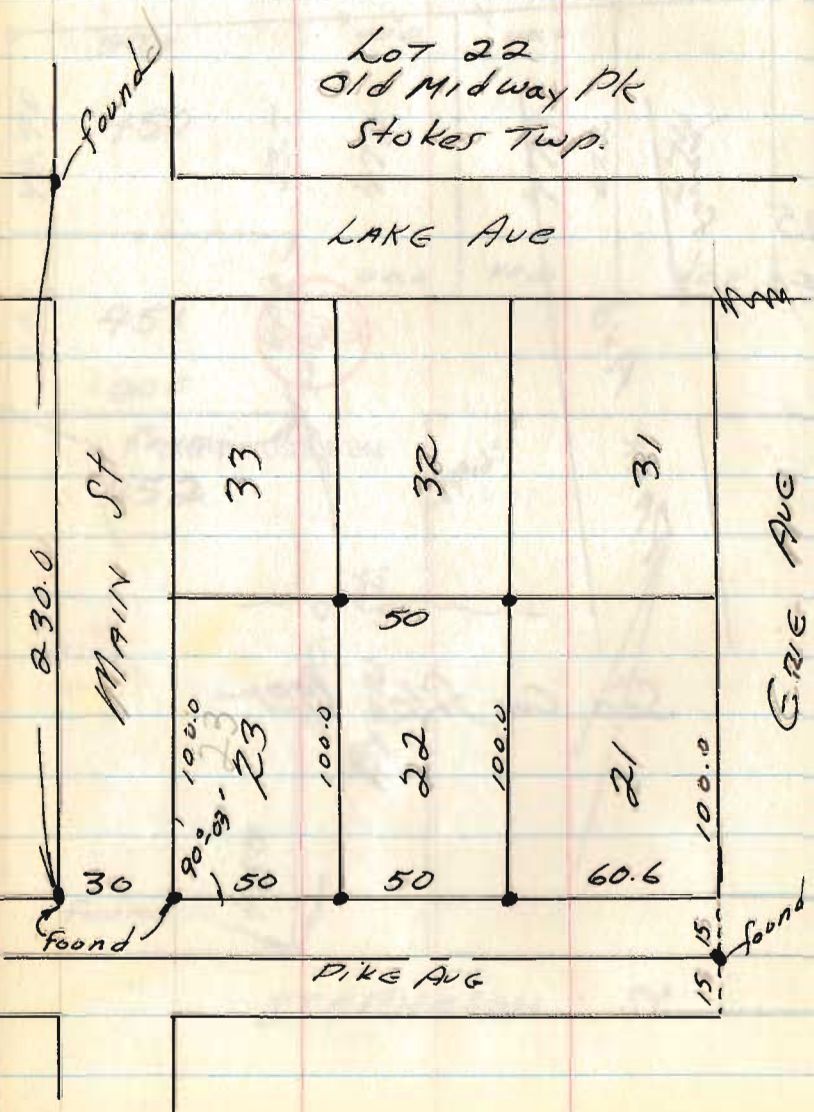
Pete Braumiller
 12216 Cordova Dr
 Medway, Ohio
 879-1930

April 10, 68

37

Lot 22
 Old Midway Pk
 Stokes Twp.

LAKE AVE



6539

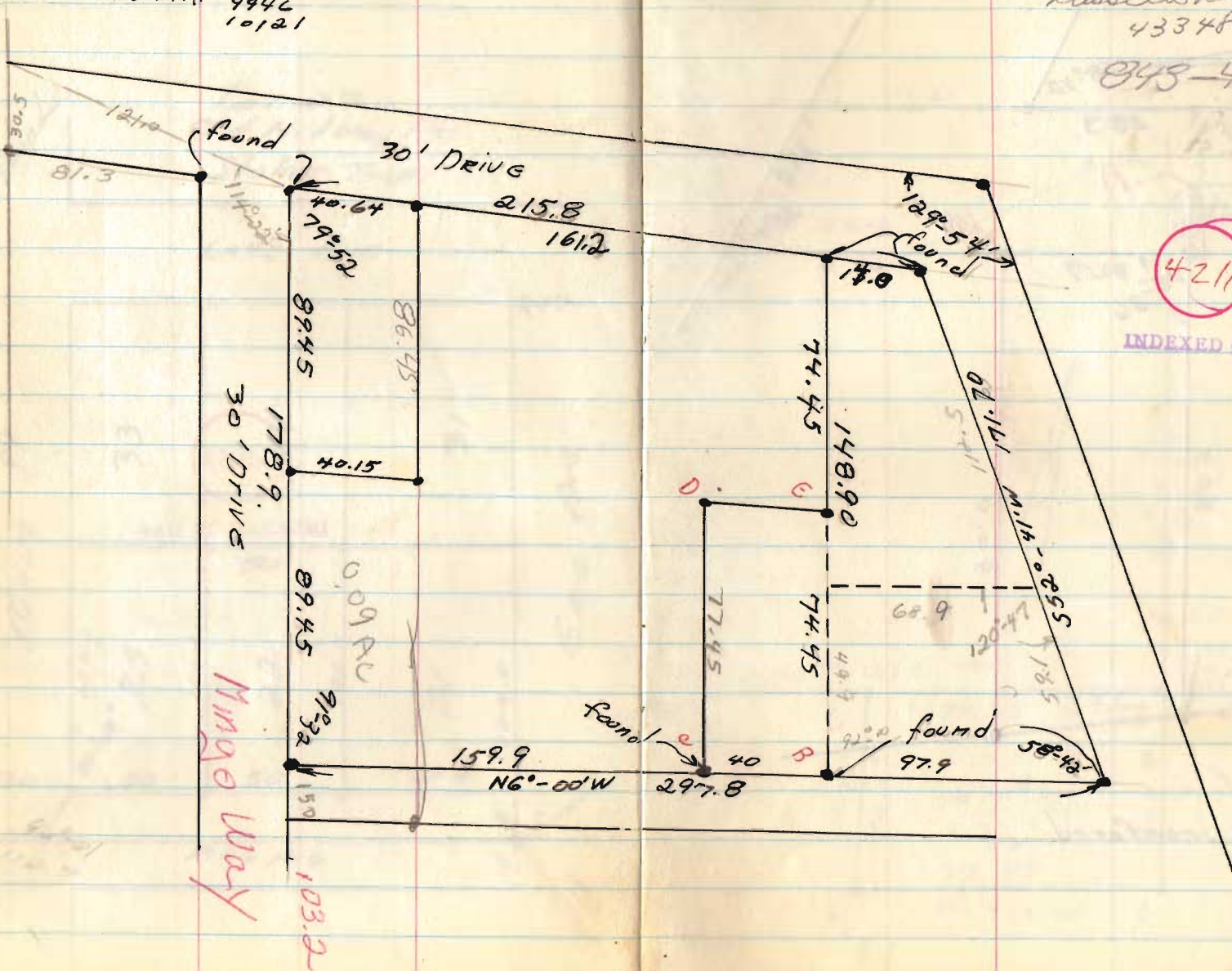
INDEXED ON MAP

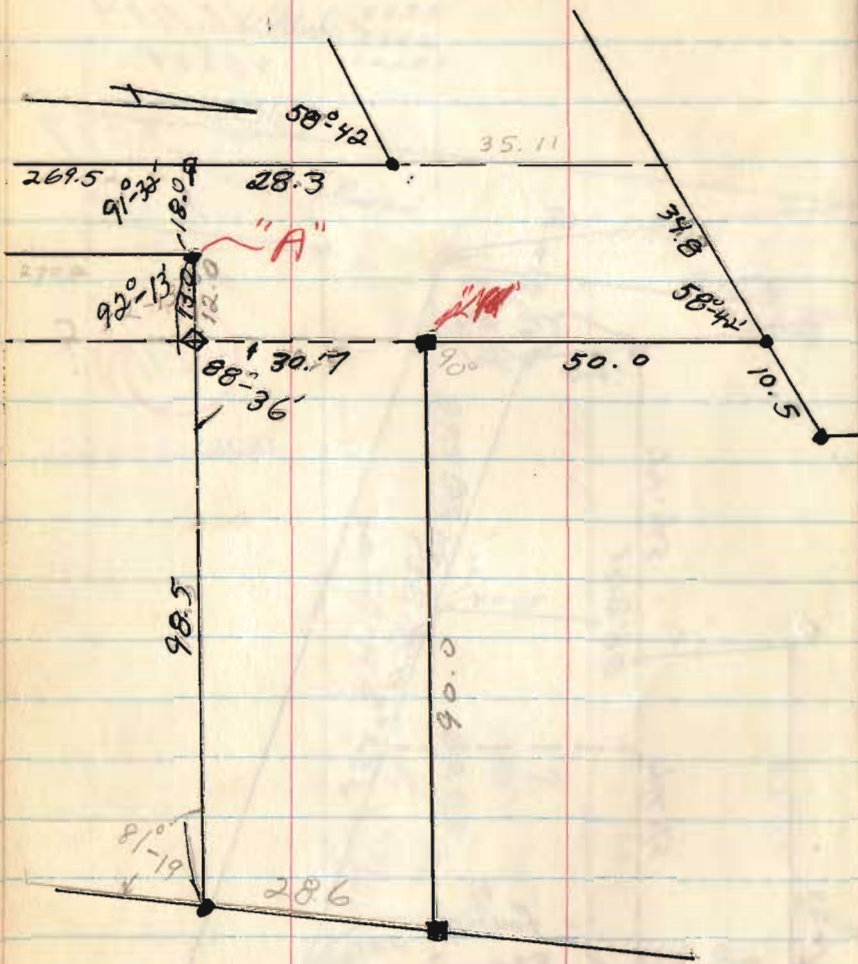
M. Nettlesham
Washington Twp,
Waterbury's Unrecord Plat
V.M.s 9925
9946
10121

April, 68

Mel Nettlesham 38
Rt. 1
Russell Pt.
43348

848-4397

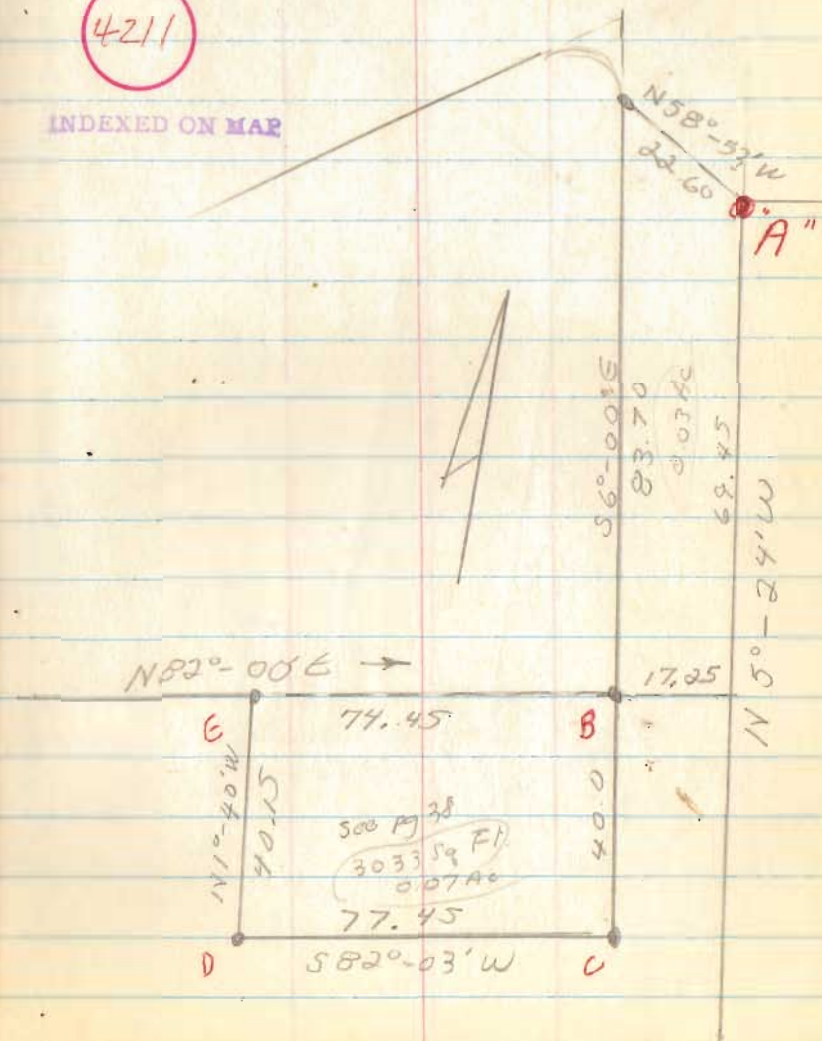




• iron found

4211

INDEXED ON MAP



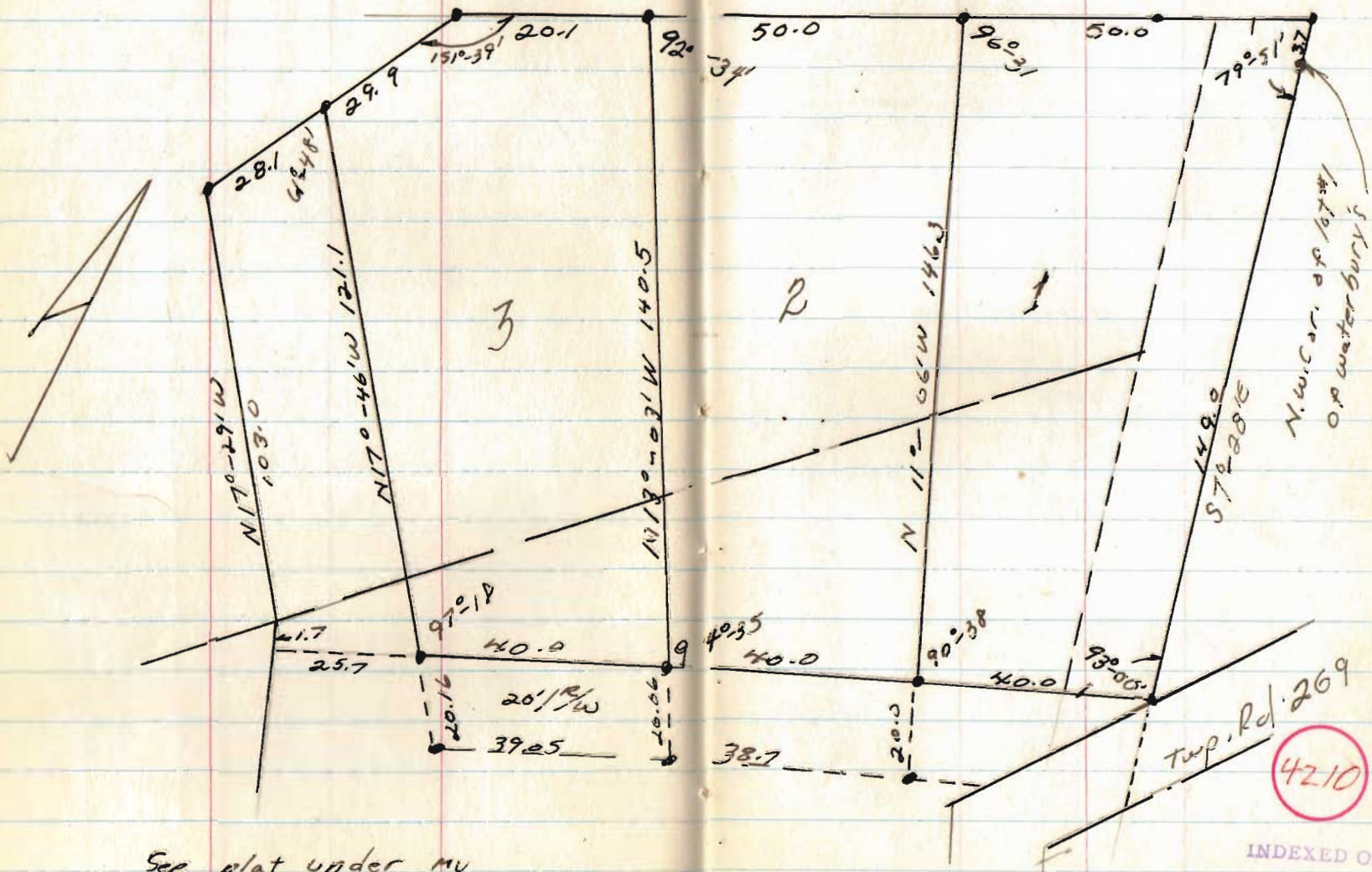
500 M² 38
 3033 Sq Ft
 0.0746

Coleman
Washington Twp.
Near Waterbury

April, 68

41

INDIAN LAKE



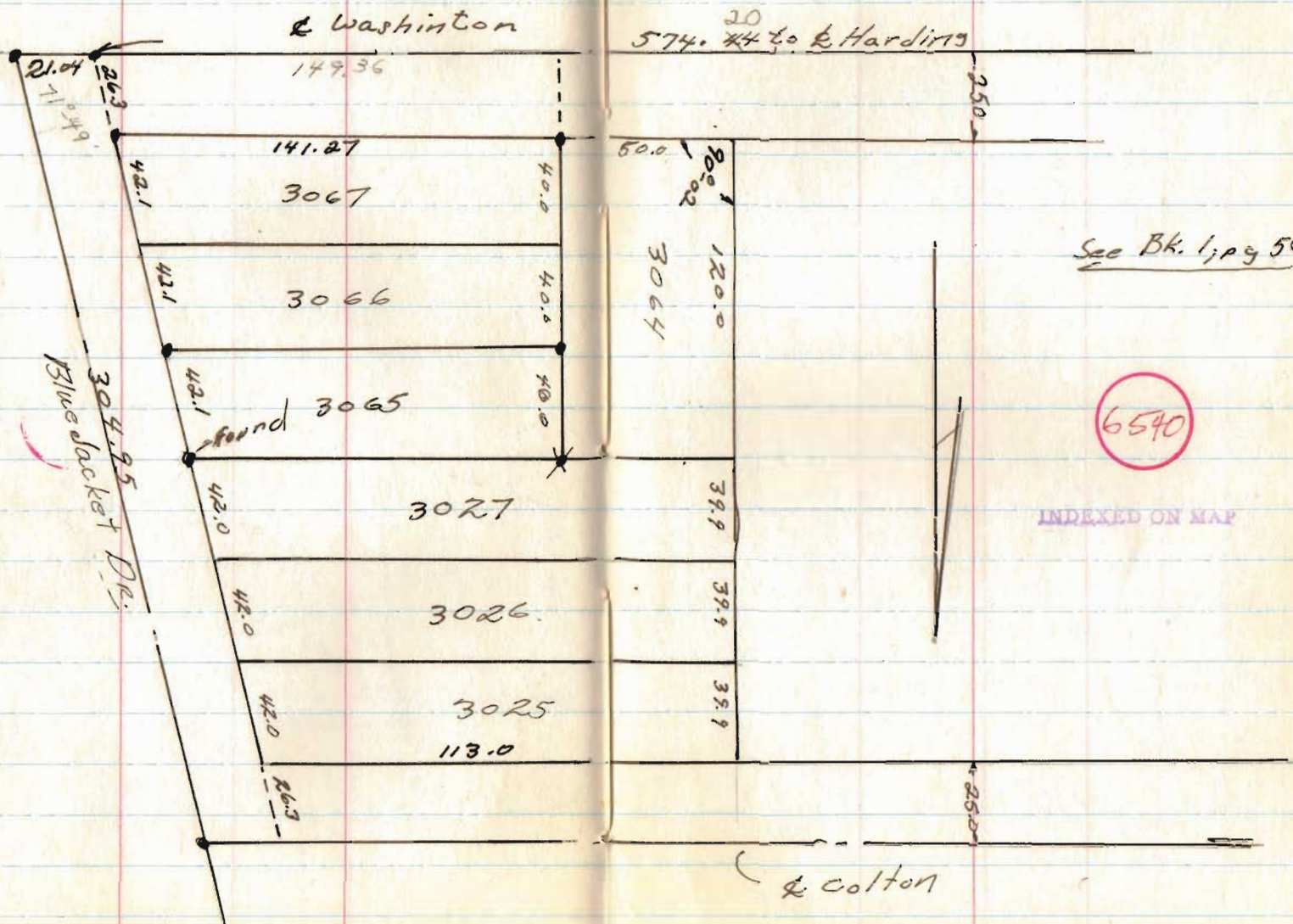
See plat under my
file in Gilbert's off.

INDEXED ON MAP

Turner
Bellefontaine, O

April, 1968

43

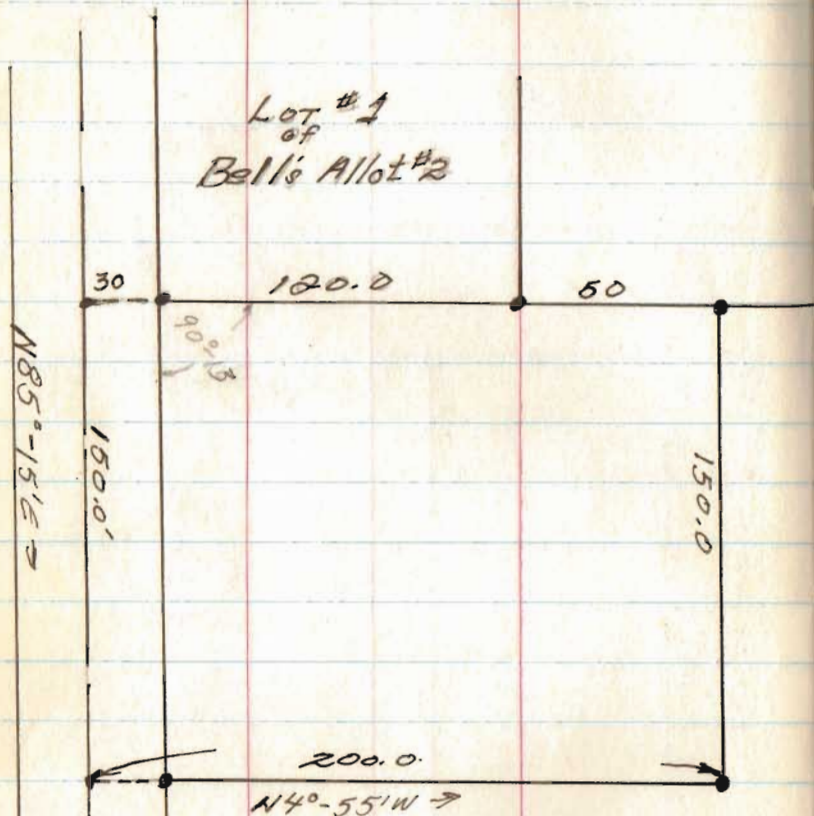


Road to Neal
V.M.S. 10306
McARTHUR TWP

April 27, 68

45

Lot #1
of
Bell's Allot #2



4201

INDEXED ON MAP

Co. Rd #57
Greenville Treaty Rd
See Co. Engrs F.B. 578
pg 66.

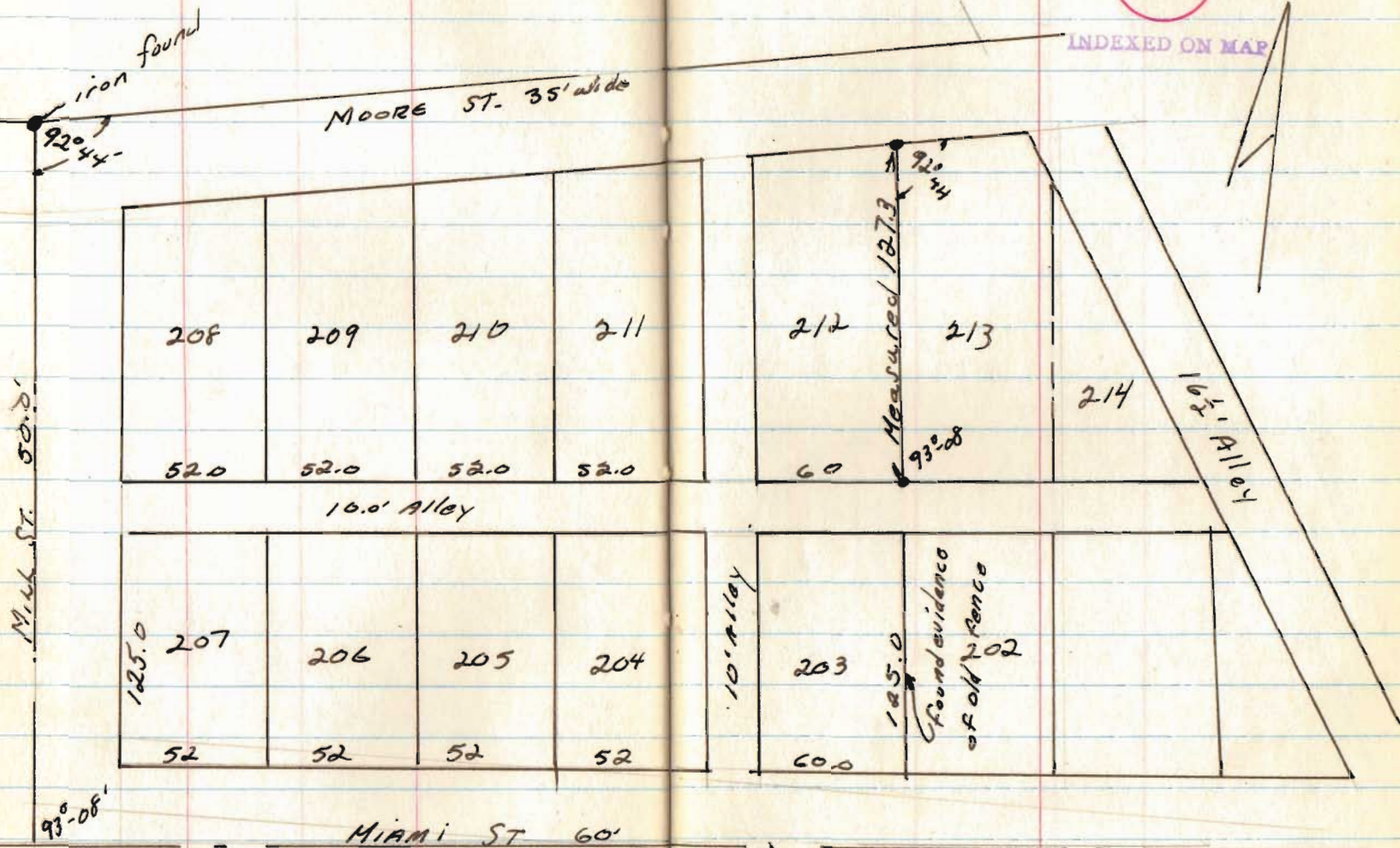
Lots 213 & 214 DeGraff
for H. Hanks

May 4, 1968

47

654

INDEXED ON MAP

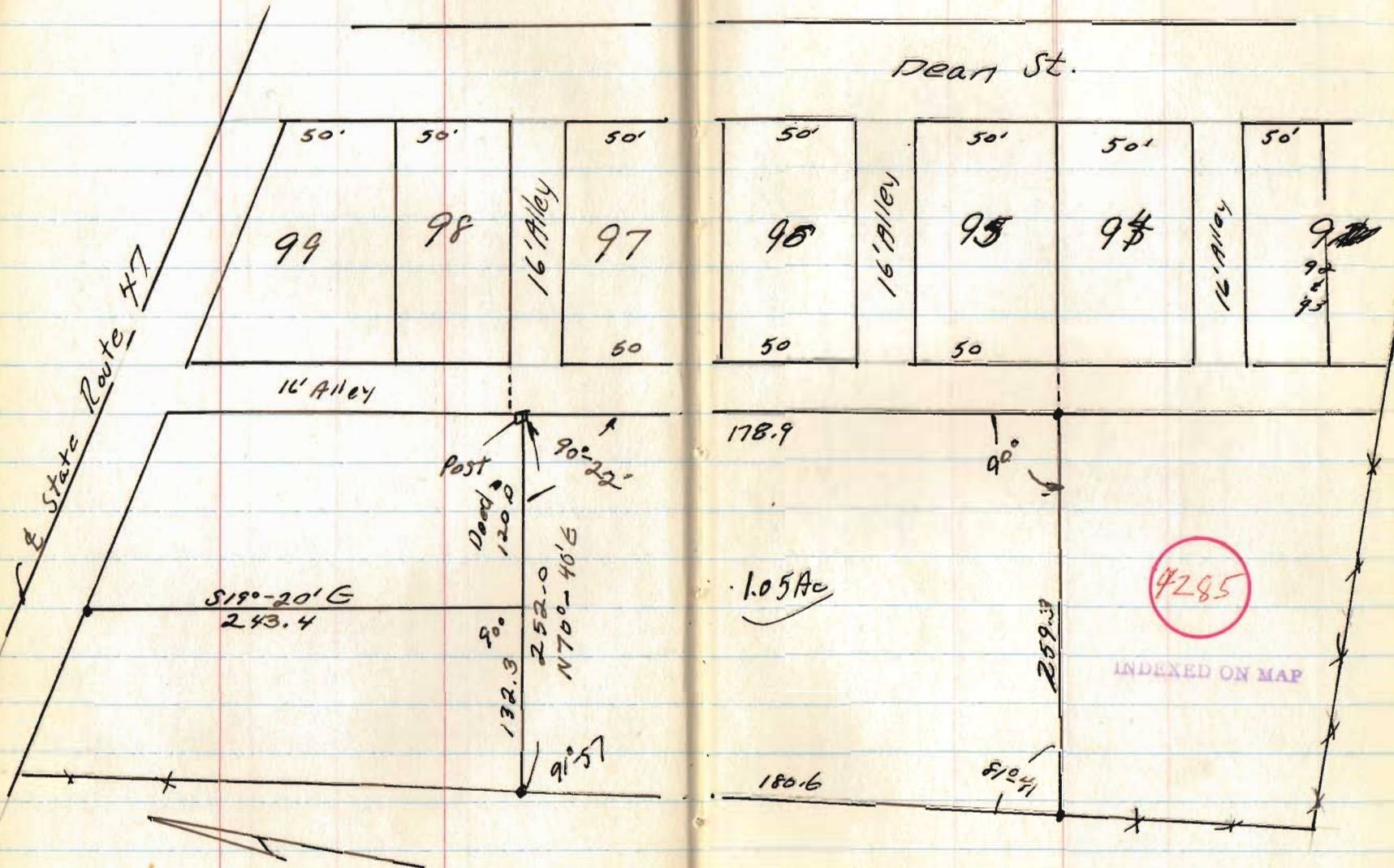


Dist. between Mill & 10' Alley Check by measuring between curbs.

Geo. Brugler
Dean St.
West Mansfield

May, 18, 1967

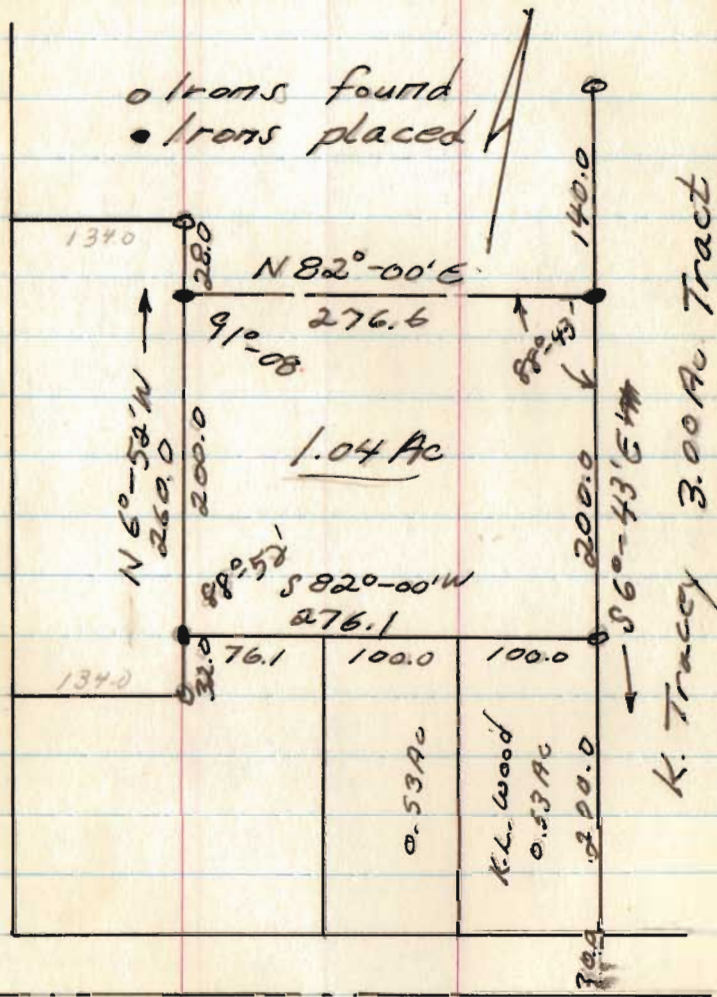
49



F. Reese Survey

V.M.S. 9946
 9925
 10121
 Wash. Twp

Center St. of Durm's Pond Allot.



1.04 Ac

K. Tracey 3.00 Ac Tract

State Route #366

Oct. 5, 68

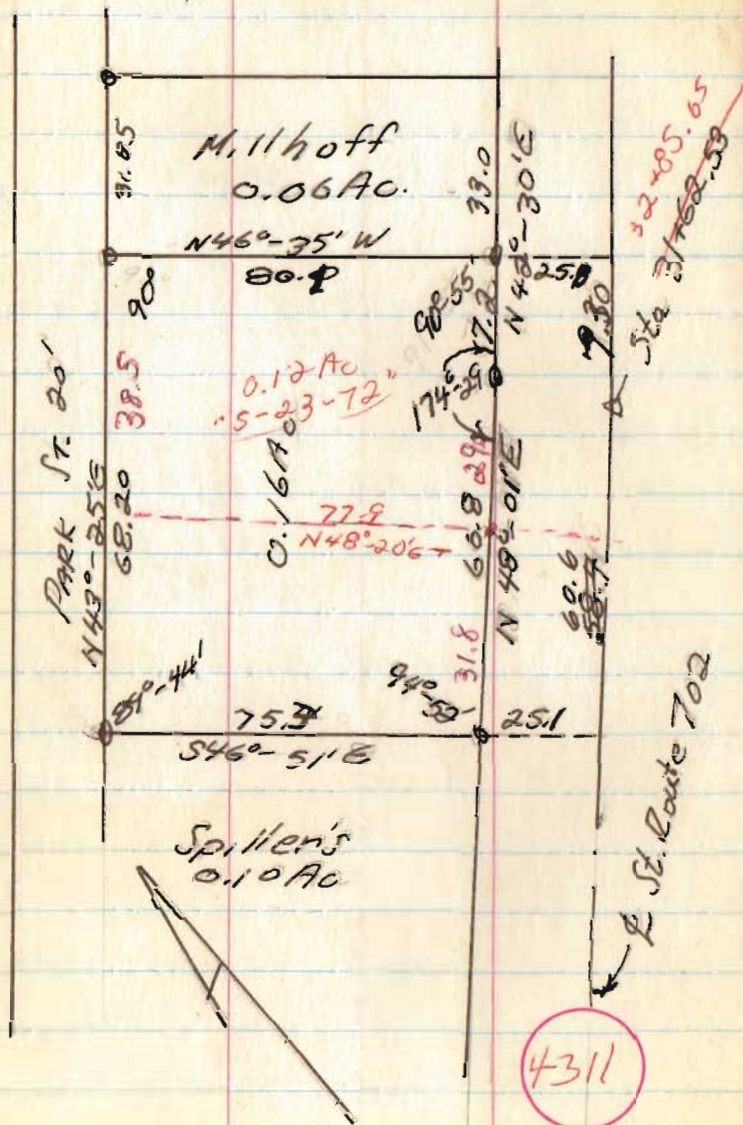
51

Mr Forrest Reese
 2831 Sutton Ave
 Dayton, Ohio
 45429

4309

INDEXED ON MAP

Hull to McClure
Stokes Twp.
U.M.S. 12276 & V.M.S. 12277

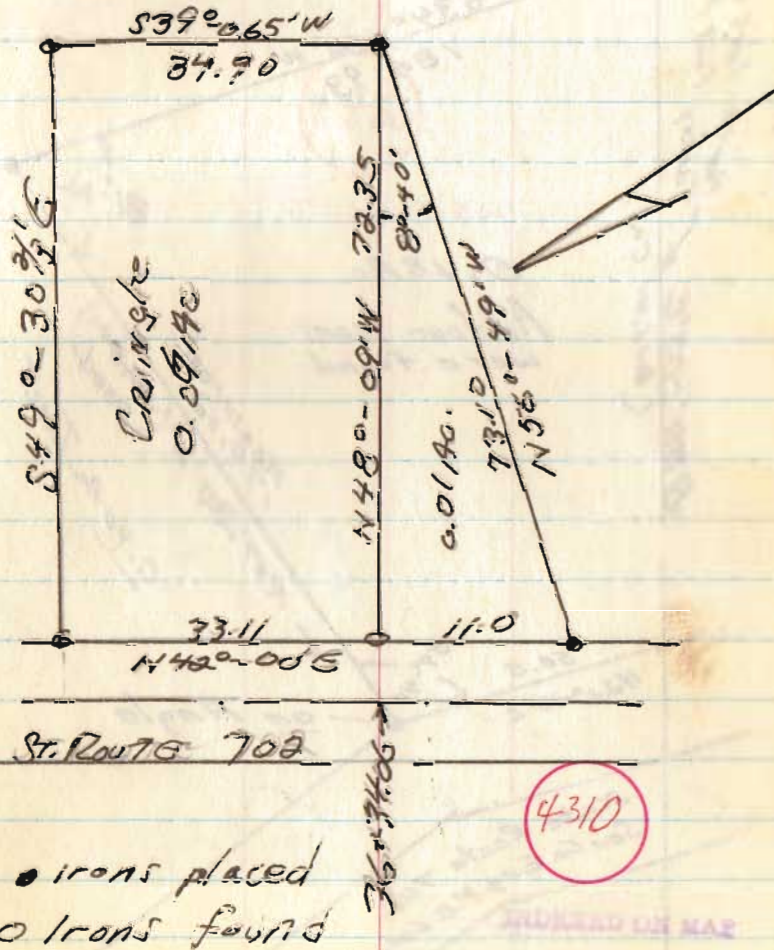


INDEXED ON MAP

Oct. 5, 68

53

Hull to Cringler
Stokes Twp
V.M.S. 12276

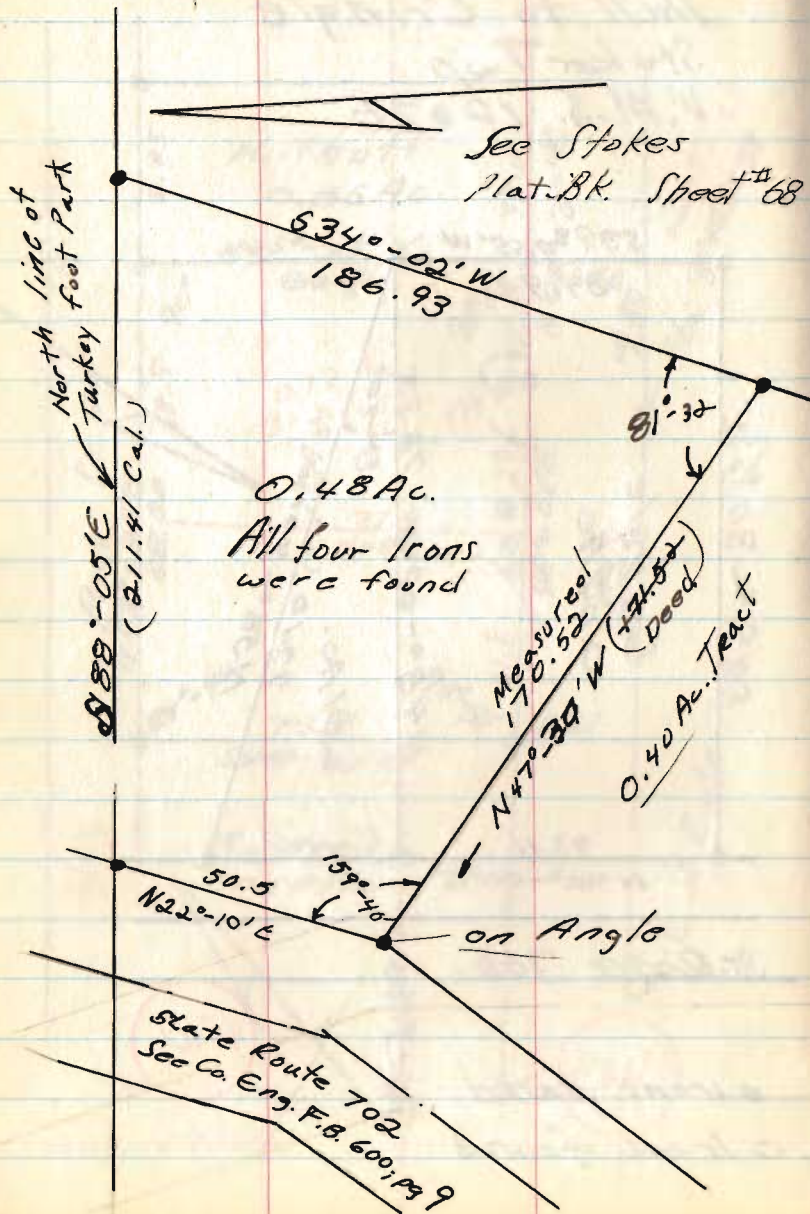


• irons placed
○ irons found

Hall Survey
Stokes Twp.
V.M.S. 12374

Nov. 23, 68

54



4460

INDEXED ON MAP

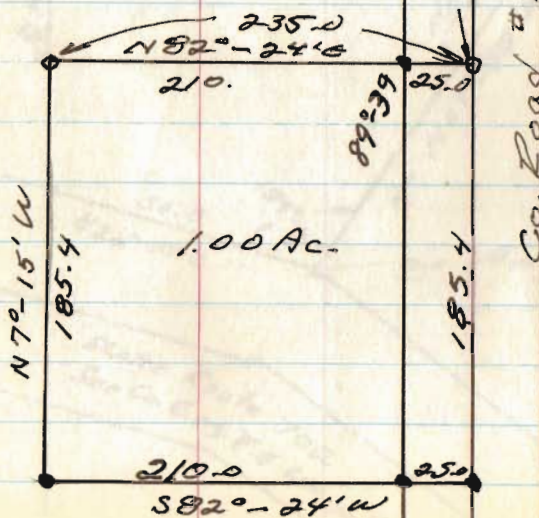
Troyer to Moore
V.M.S. # 9905
McArthur Twp.

Oct. 19, 1968

55

St. Route 274

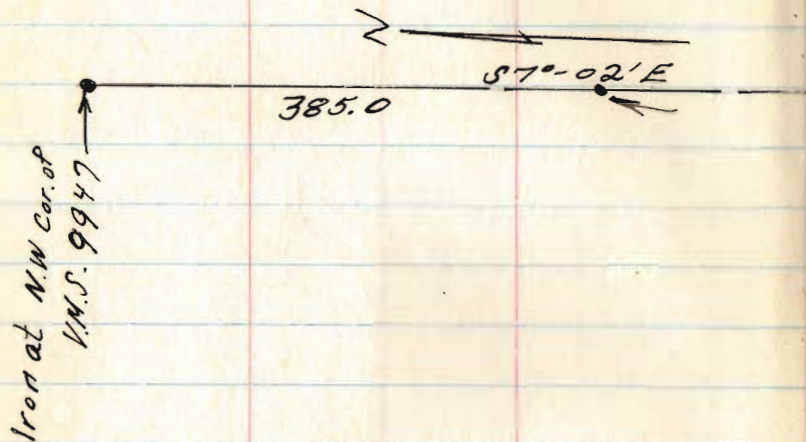
placed
found
Lee Albert's
8.56 Ac. Tract



4455

INDEXED ON MAP

MOUND Wood South Line
Washington twp

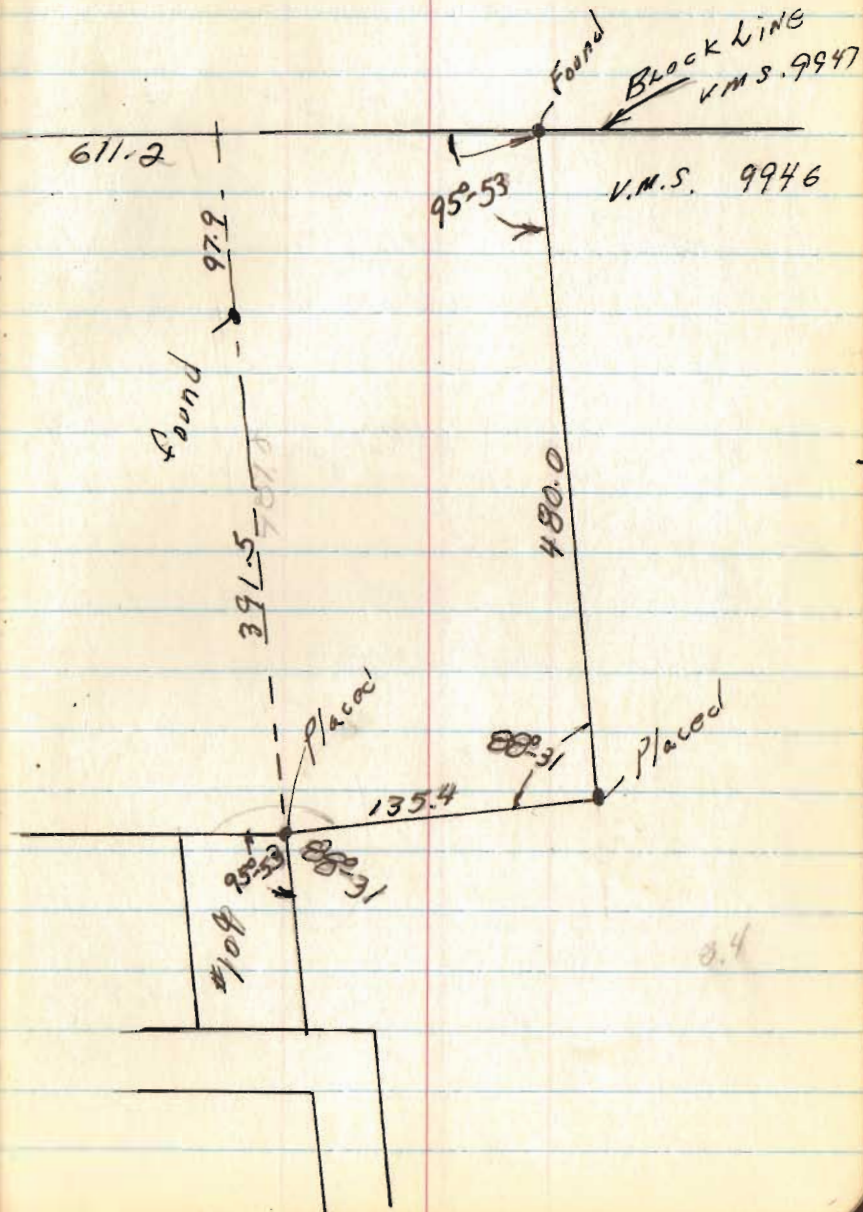


6542

INDEXED ON MAP

Dec., 68

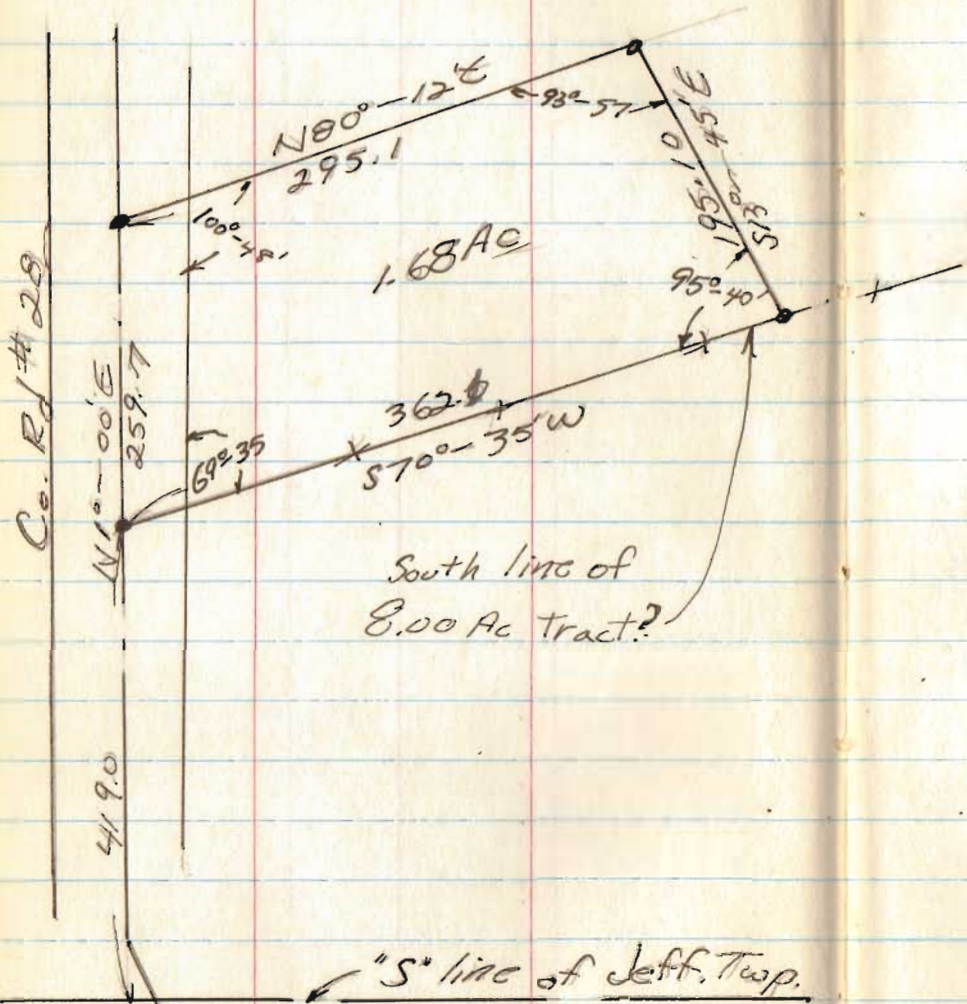
57



Thom. Williams to Williams
 Jefferson Twp.
 V.M.S. 4497

Feb. 8, 1969

59



69-35
 100-48
 93-57
 95-40
 360-00

4486

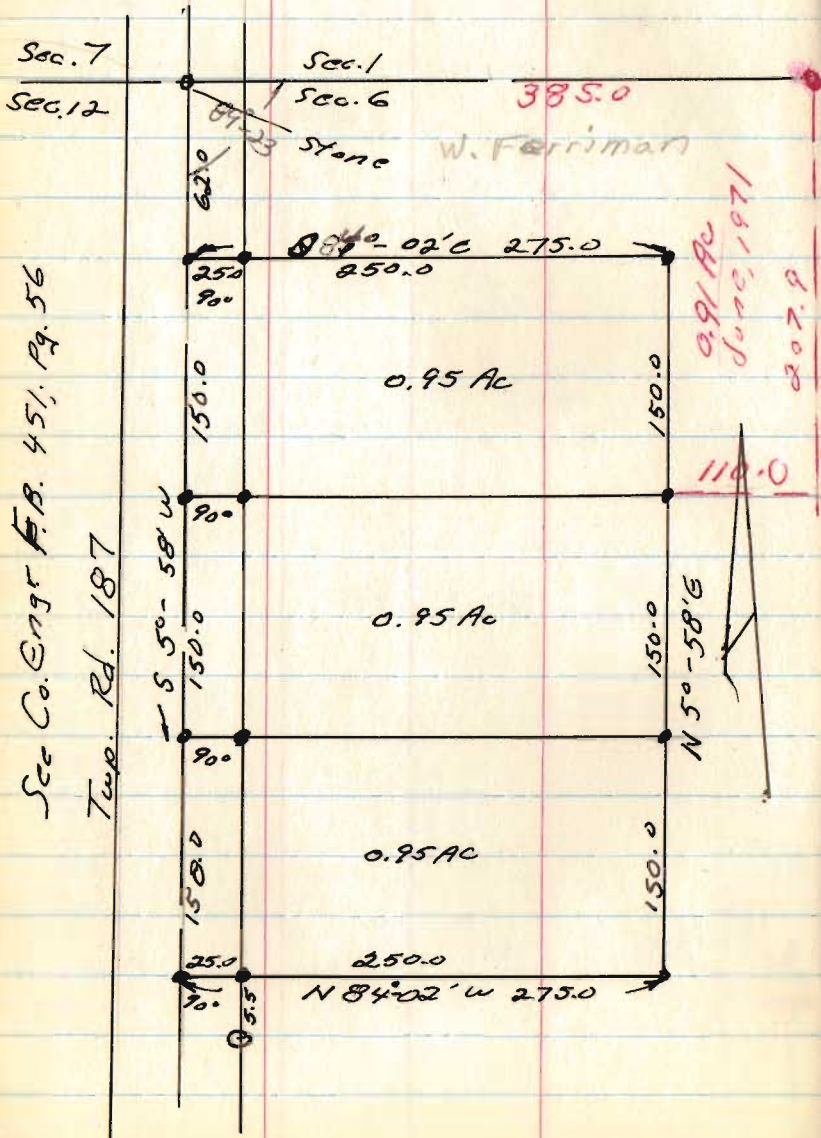
INDEXED ON MAP

A. Regier
Sec. 6 T-4; R. 13
Union Twp

Feb 15, 1968

61

R.R. 2; West Liberty
593-4428



Sec Co. Engr F.B. 451, Pg. 56
Twp. Rd. 187

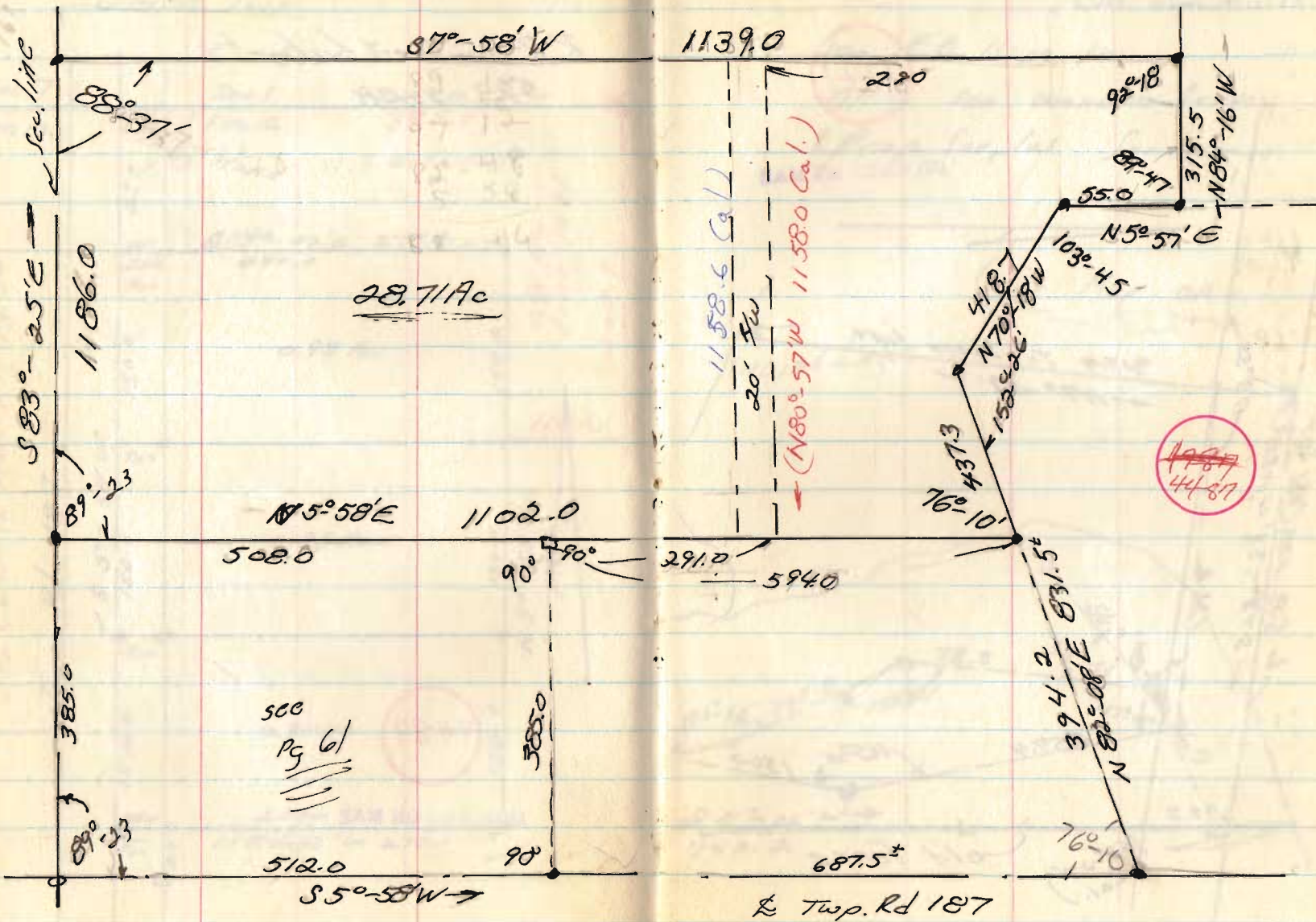
4487

INDEXED ON MAP

A. Regier

April 8, 1969

62

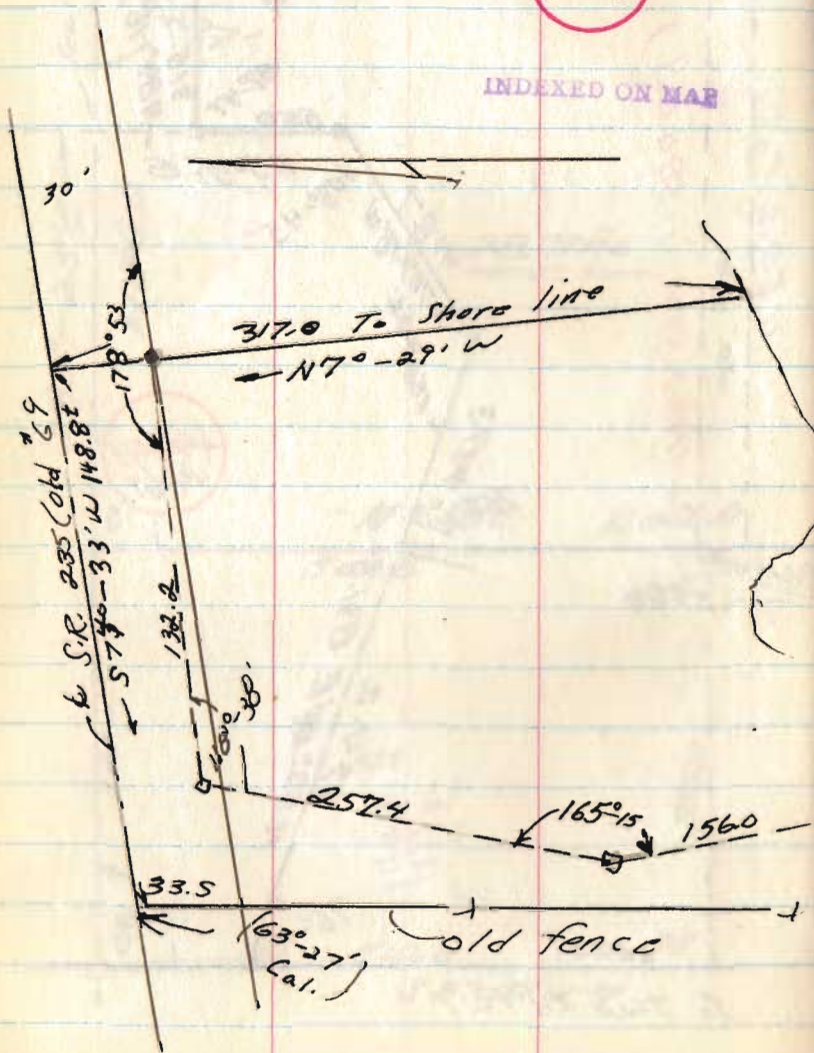


CARDER SURVEY
Hill Area

RICHMOND TWP

4141

INDEXED ON MAP



Feb., 1969

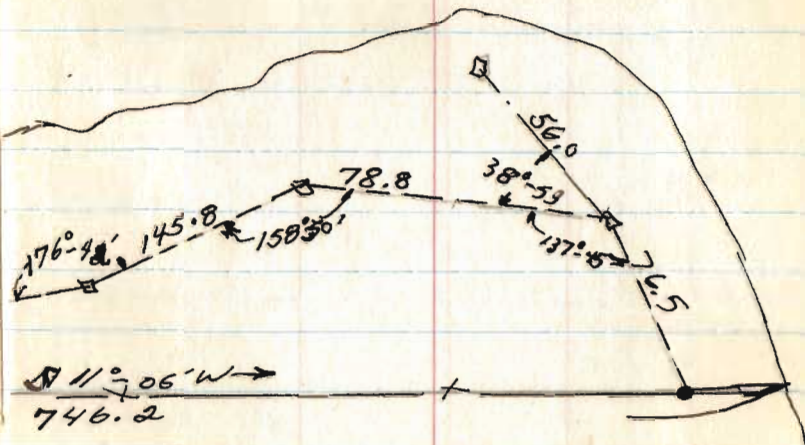
63

See F.B. 11; pg 10

Also see Wonders Survey
& Prop. Surplus Survey

(for Map only)

INDIAN LAKE



Ed Lavins; 416 So. Main

March 1, 69

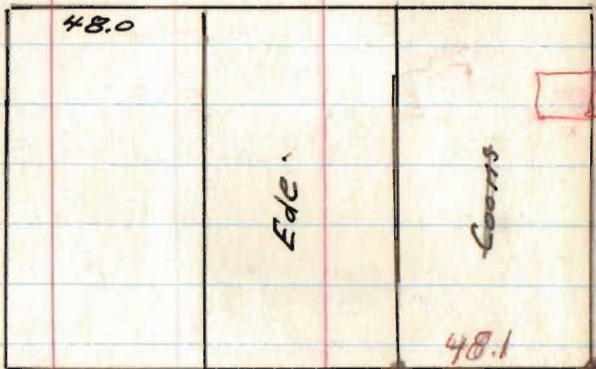
65

(80') Main

332.4

87.55

208.0



48.0

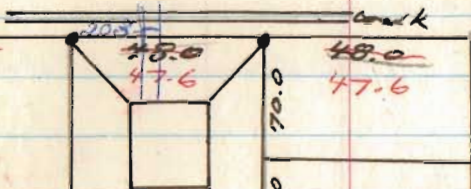
49.0

48.1

48.7

47.7

47.7



48.0

47.6

48.0

47.6

70.0

40.0

90.32
40.0

227.25

WATER (60") 525.5

227.75

87.30

(30') Bucking Alley

258.0

8.0

16 1/2 Alley



6156

INDEXED ON MAP

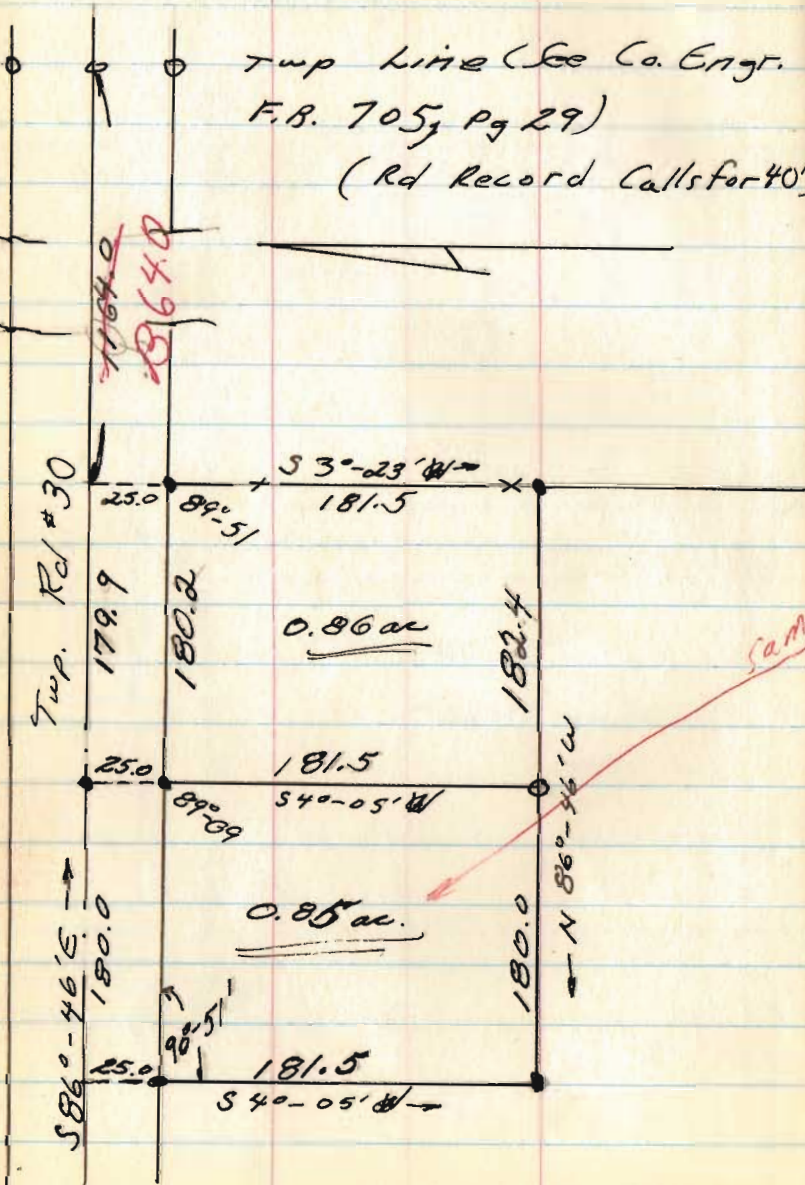
F.F.W. Survey
the above tract
in 1938

335.10

(80') Detroit

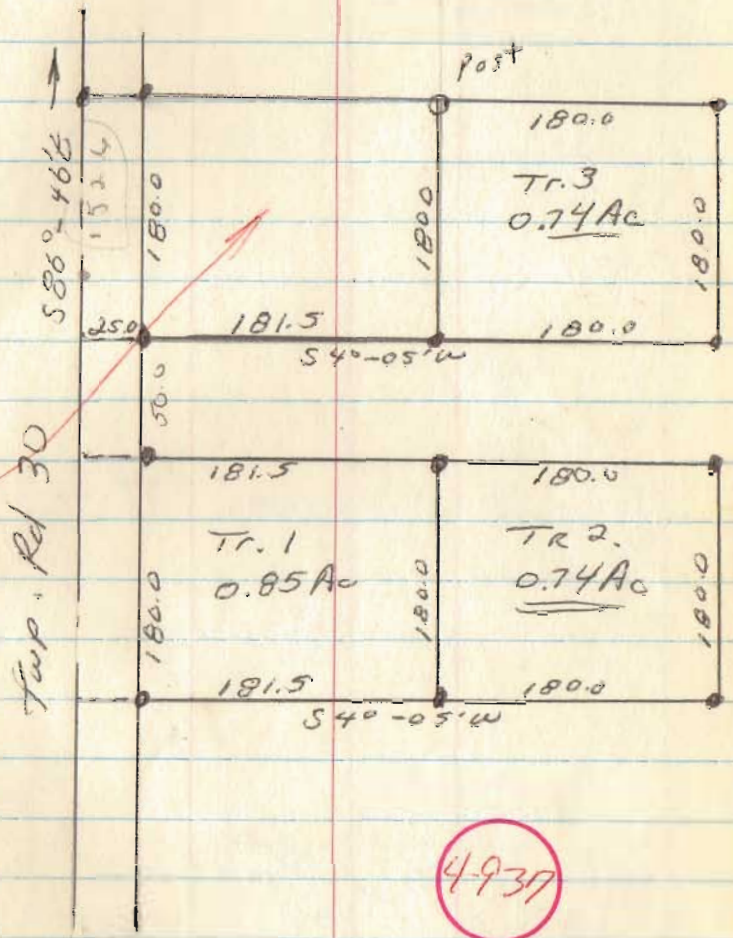
Al Merriman
 Sec. 29, T-5, R-13, M.R.S.
 Liberty Twp

Twp Line (See Co. Eng.
 F.R. 705, pg 29)
 (Rd Record Calls for 40')



'69'

67



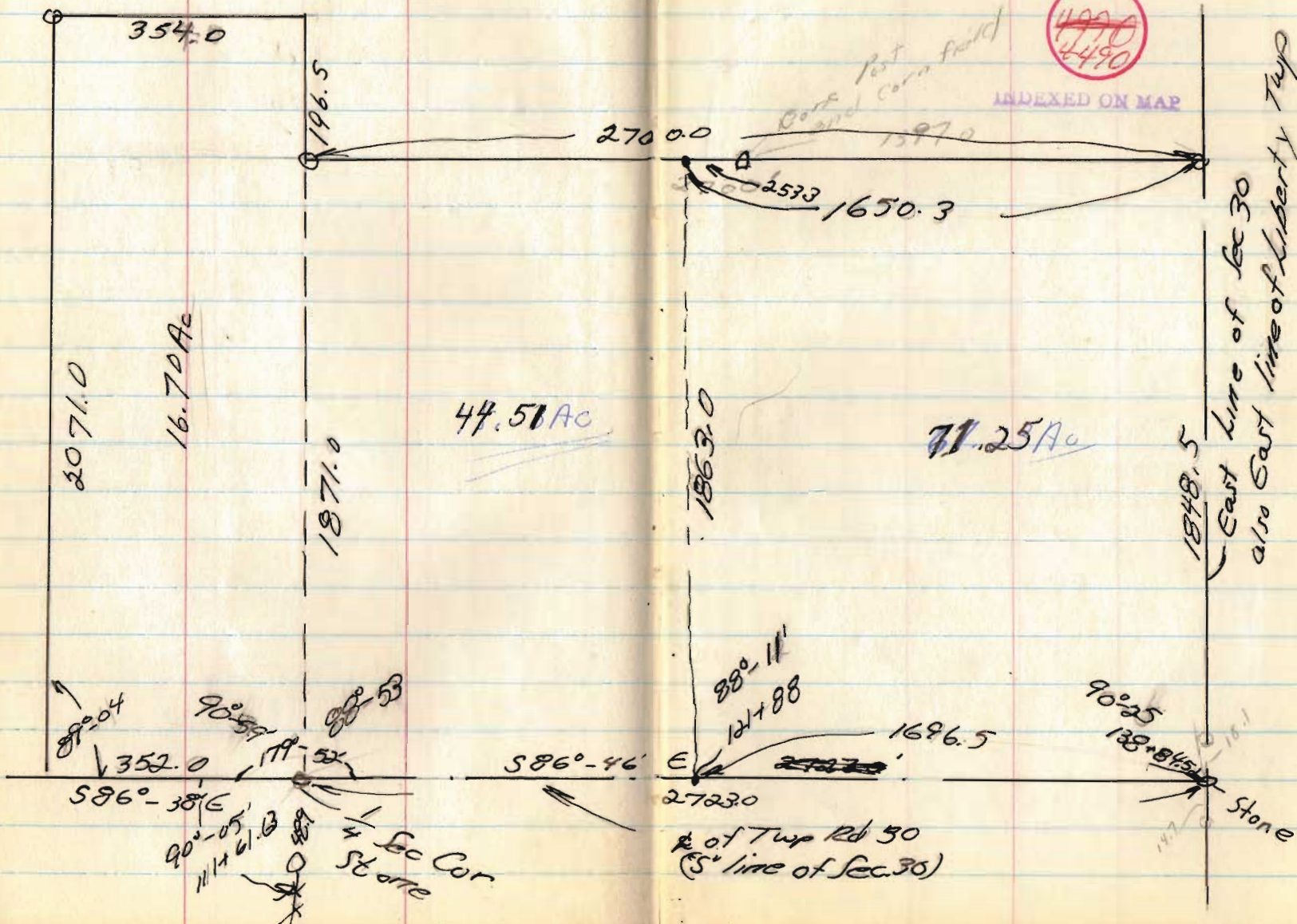
4937

INDEXED ON MAP

Dr. Hookey
 Sec 30, T-5, R-13 M.R.S
 Liberty Twp

March, 1969

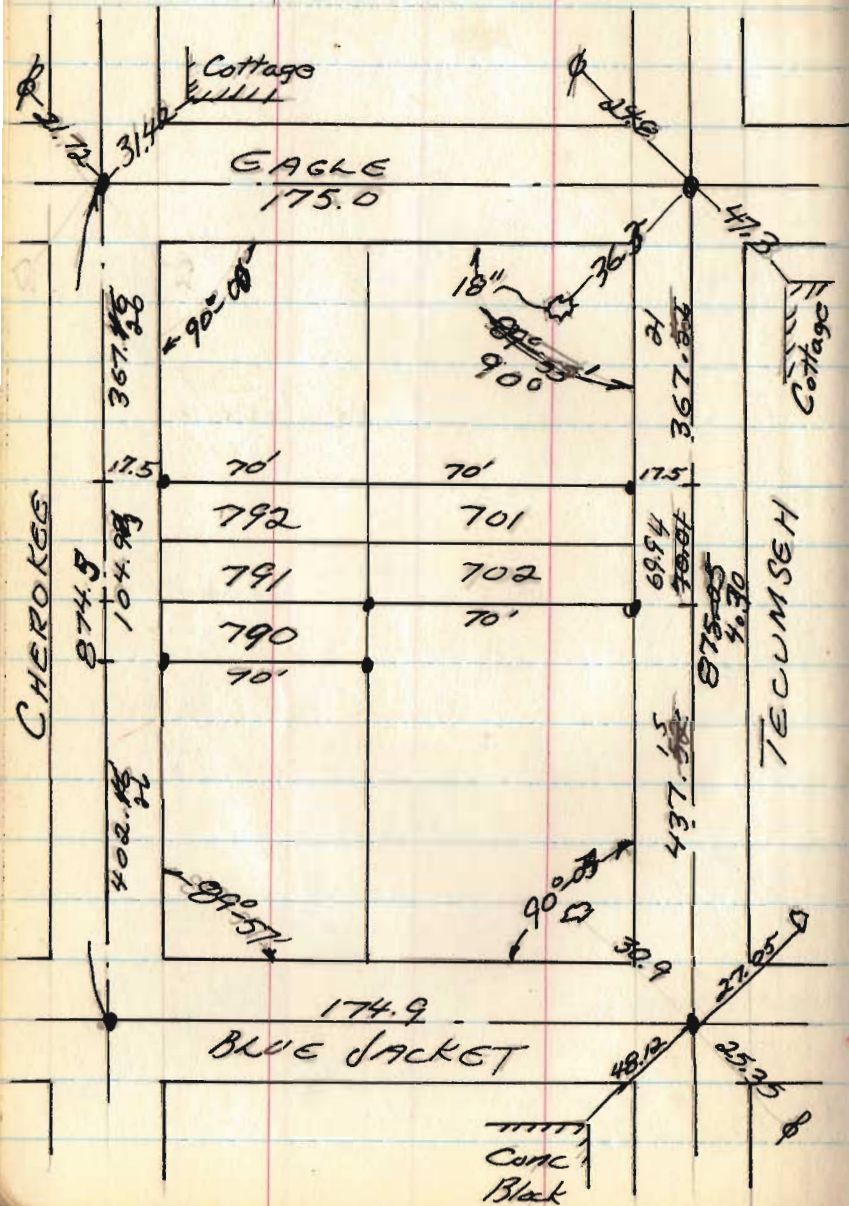
69



Mrs. Stewart
CHIPPAWA PARK

MAR, 69

71



125
71875

6542

0000
875.7000
00

INDEXED ON MAP

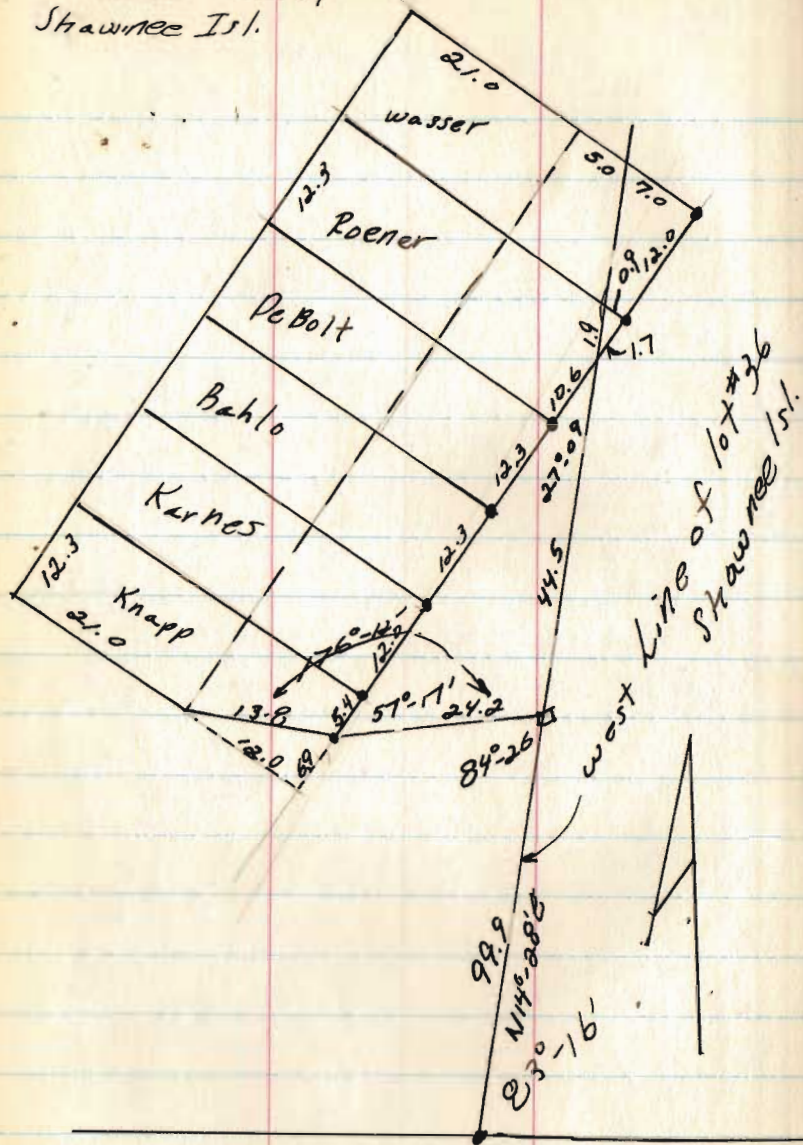
367
8
2936

362.5
29
367.31

7
8
0360

89° 57
90
179° 57
90° 58

KARNES SURVEY
Shawnee Isl.



March 15, 69

73

4492

INDEXED ON MAP

PENROD

75

Sec Co. Engr. FB-358

p. 21

