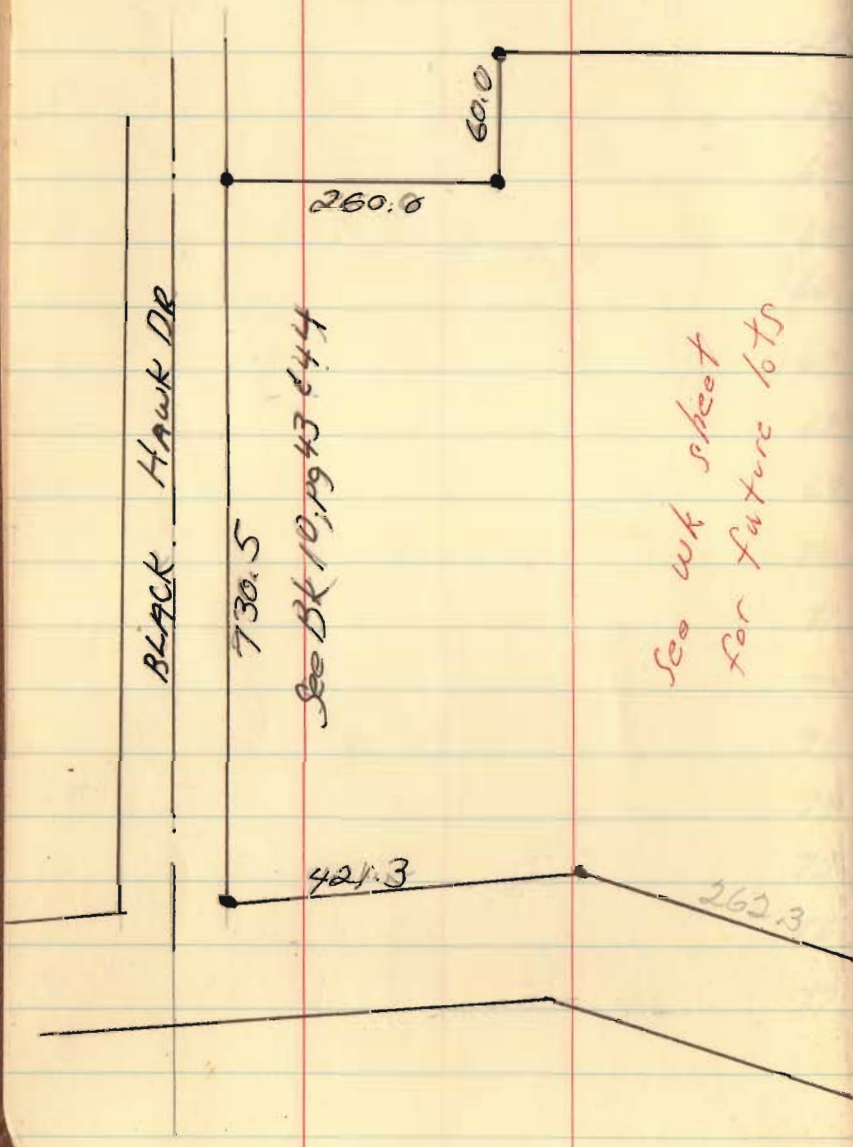


Immel's original
tracks



See w/ sheet
for future lots

See Bk 10, pg 43 & 44

BLACK HAWK DR

730.5

421.3

262.3

260.0

60.0

4493

INDEXED ON MAP

W. Immel
R.R. 1
Huntsville
43324

870.0

89°31'

See Bk. 10, pg 66

941.94

IMMEL'S

This area
will be
changed because
of HW disagreement
See pg 5
"9-69"

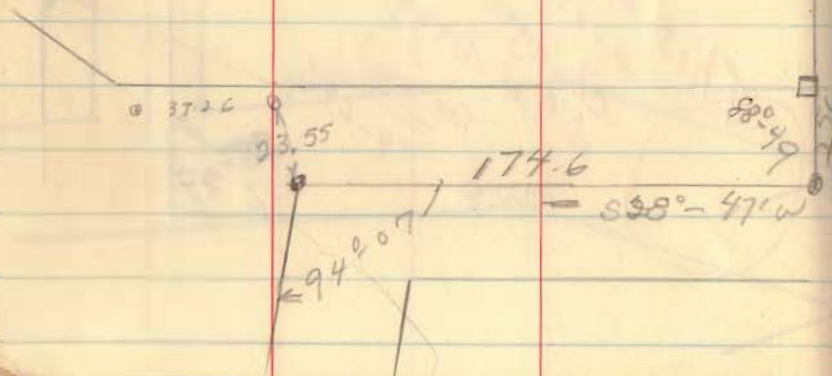
478.9

88°49'

Inmel
for Allot.

V.M.S. 12276

E for Wyandot



44.93
+ 862

INDEXED ON MAP



30.0 20.0

Irrequis Dr.
Lot # 93

Seneca A

89° 44'

238.4

450.0

Sioux Dr

234.7

184.7

118° 45'

500 ft to change

4493
4862

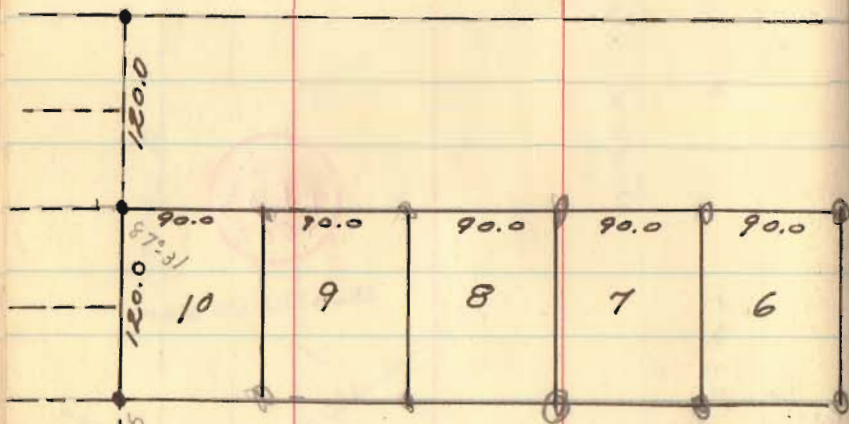
INDEXED ON MAP

39260

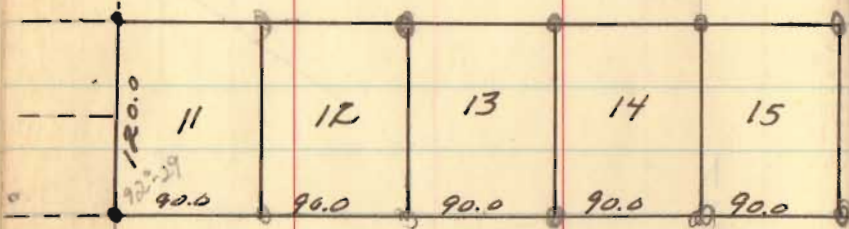
23.55

Seminole Woods
Allot #1

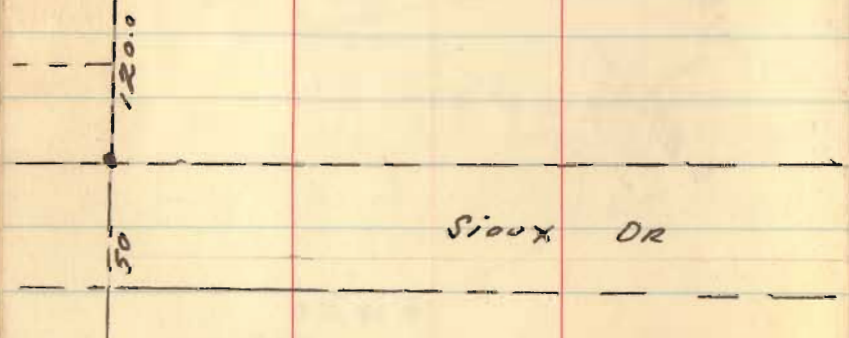
1ROQUOIS DR



WYANDOT DR



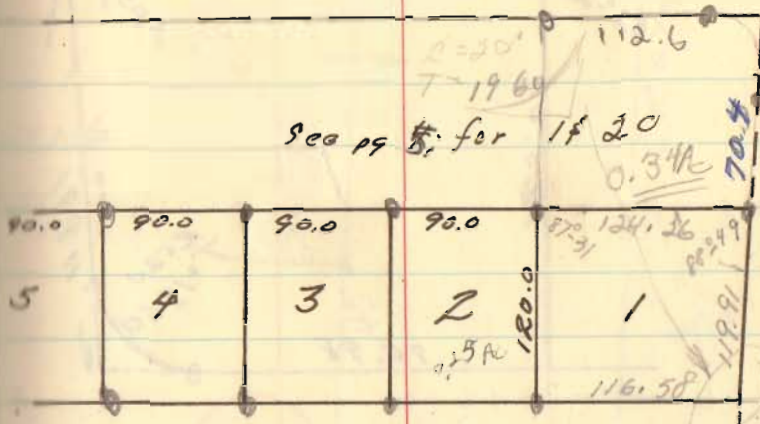
SIoux DR



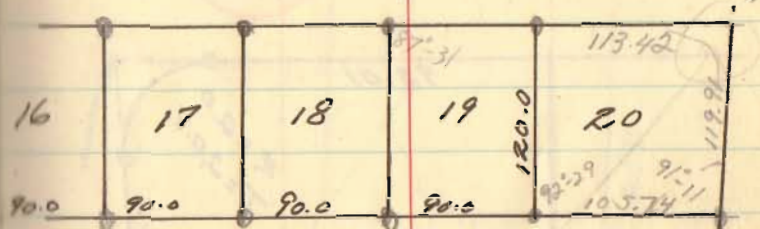
July, 1969

4

S 62°-24'6

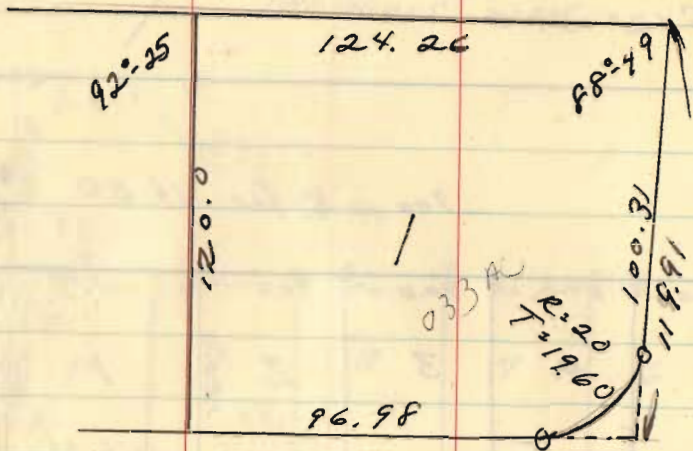


S 62°-24'6

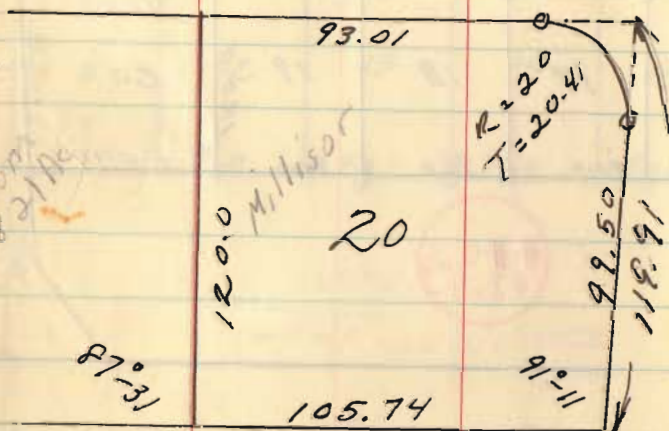


4493
4862

INDEXED ON MAP



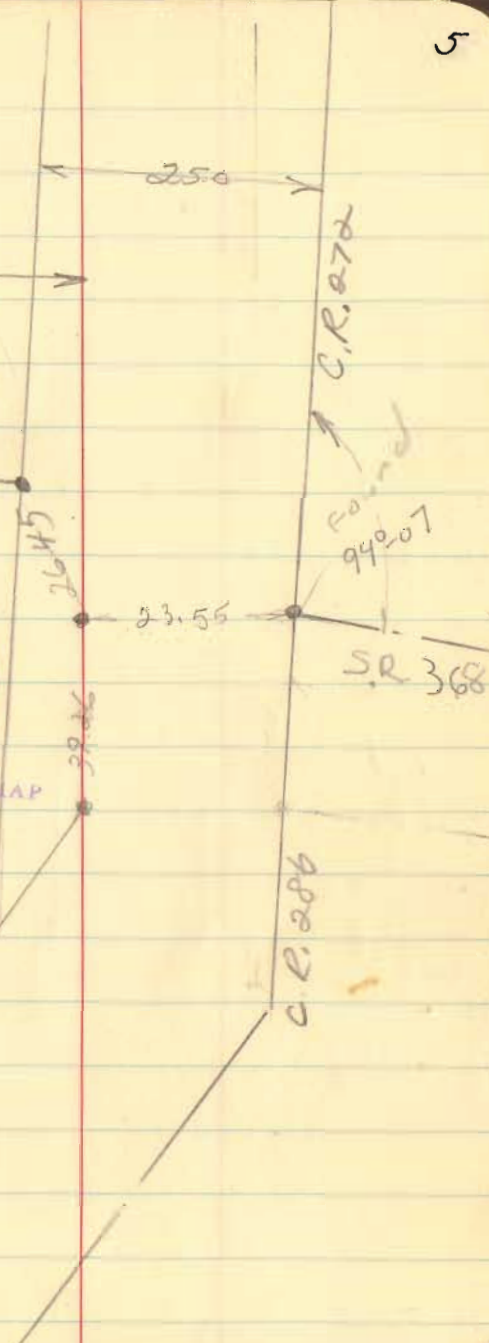
WYANDOT DRIVE

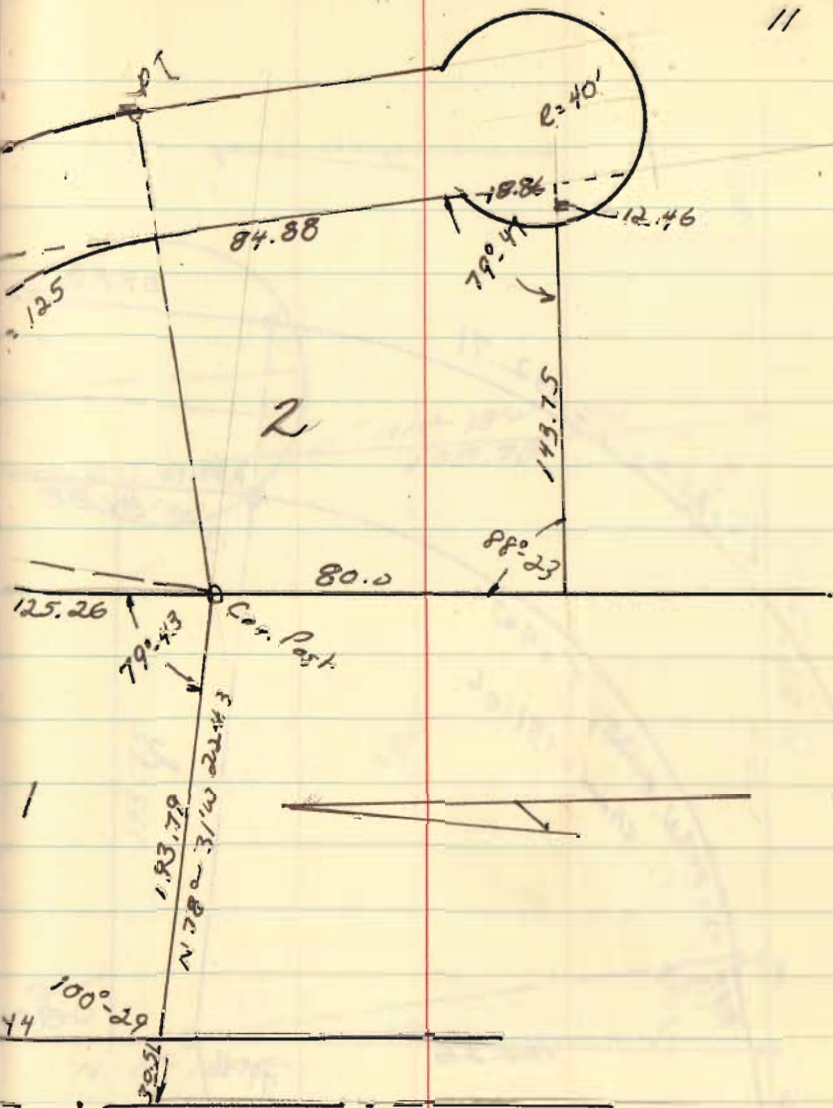
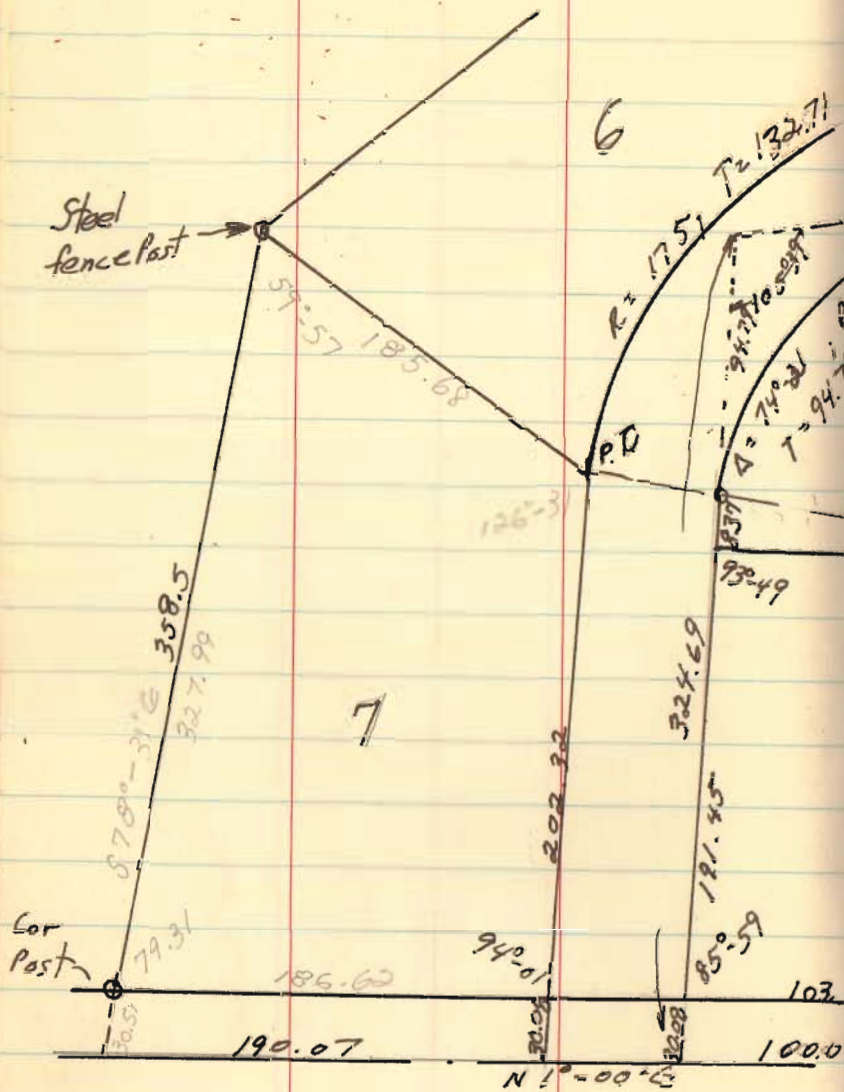


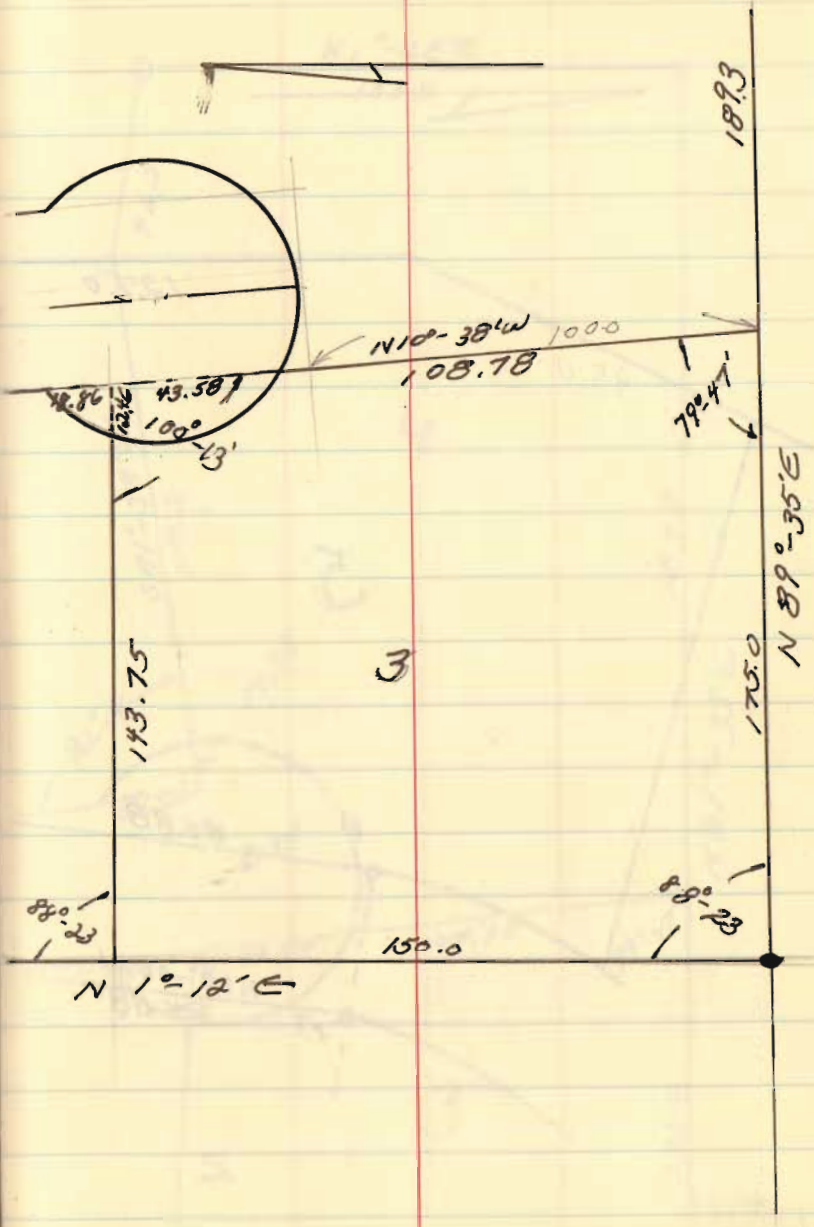
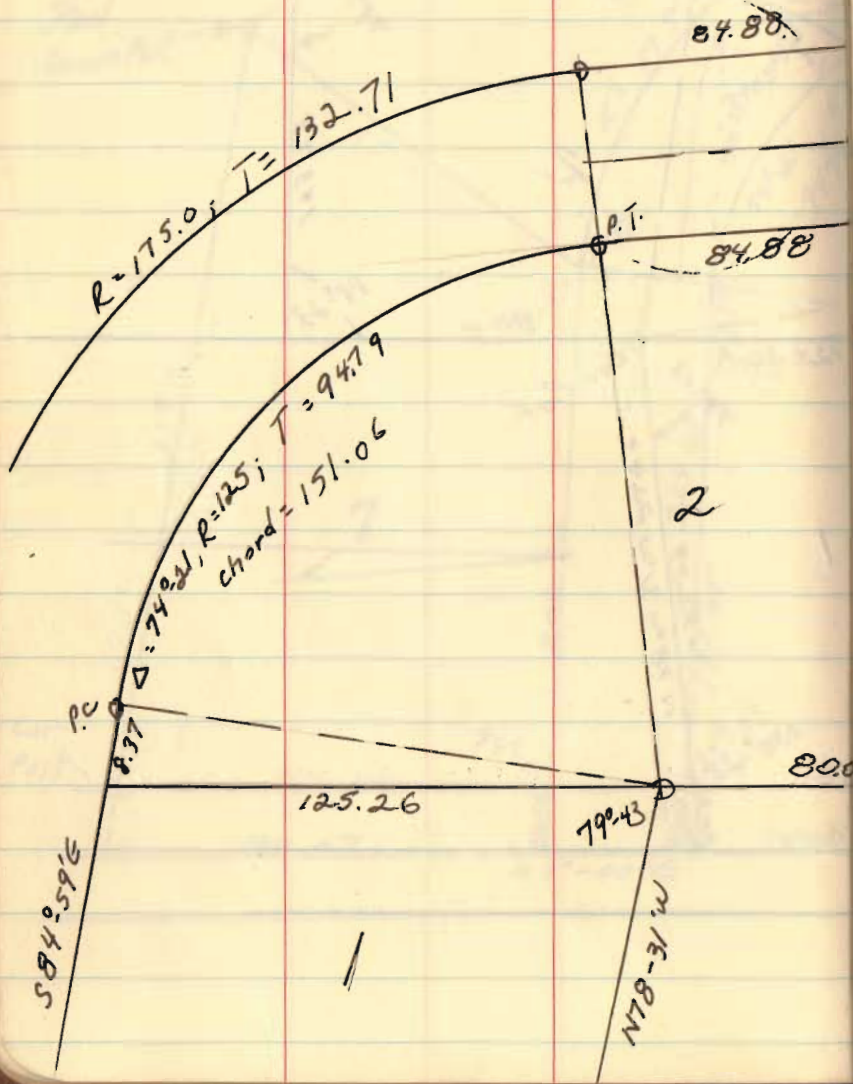
false R/W
used in
previous
surveys

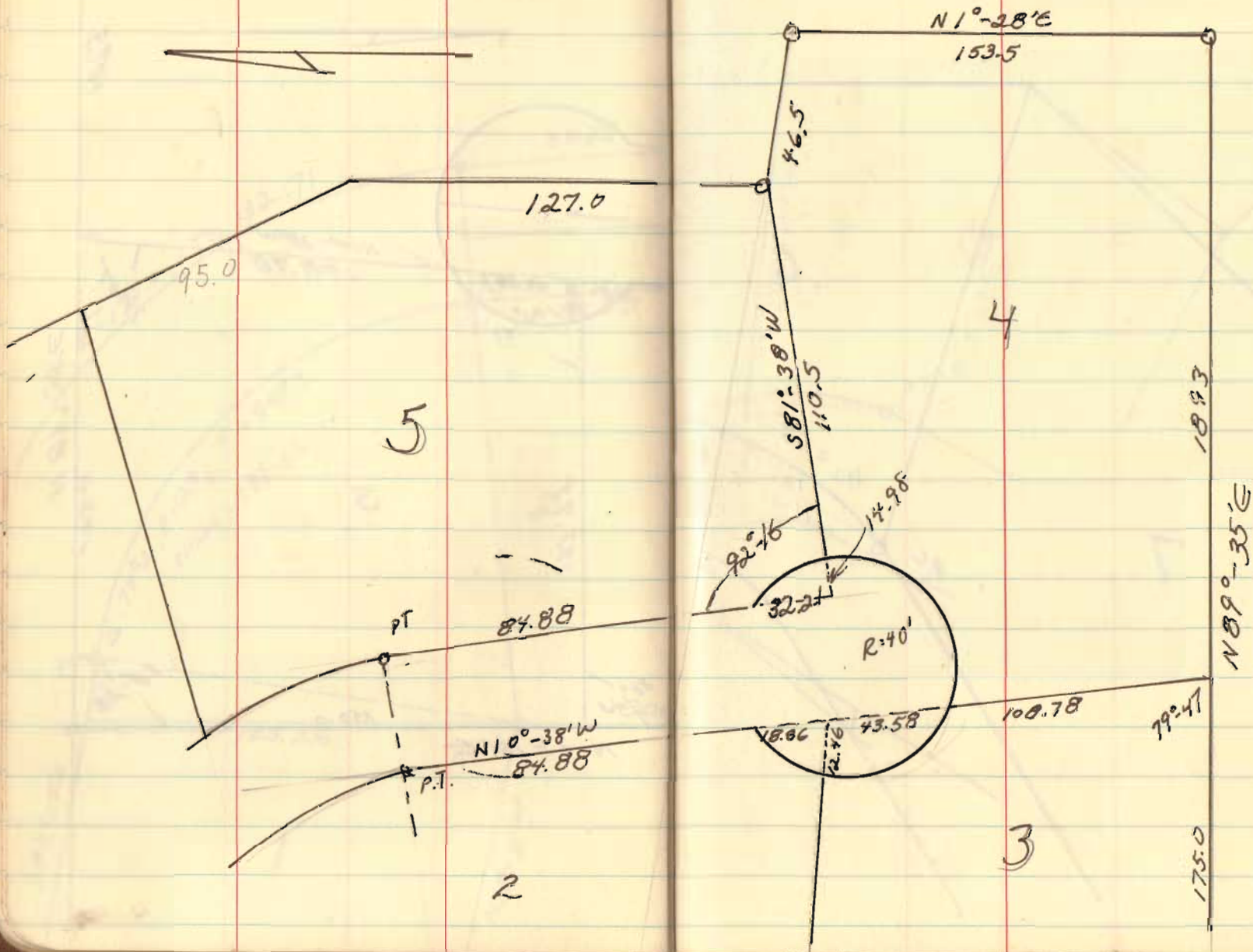
4493
4862

INDEXED ON MAP

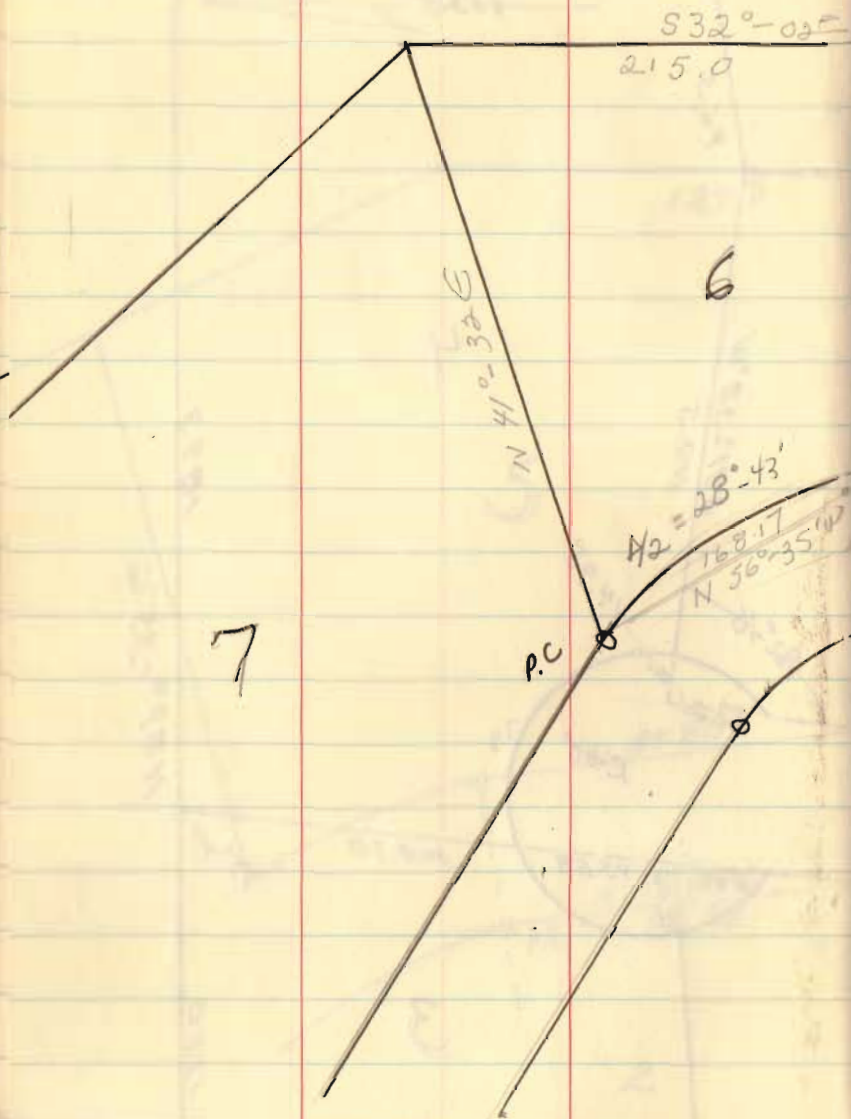




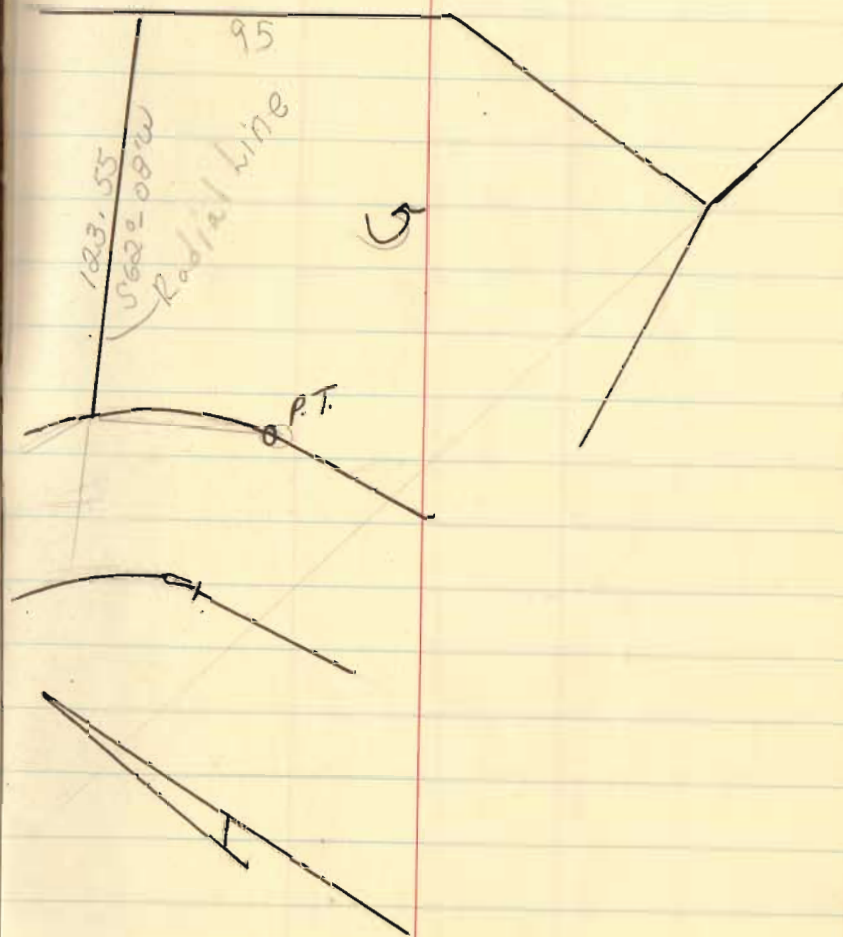




7

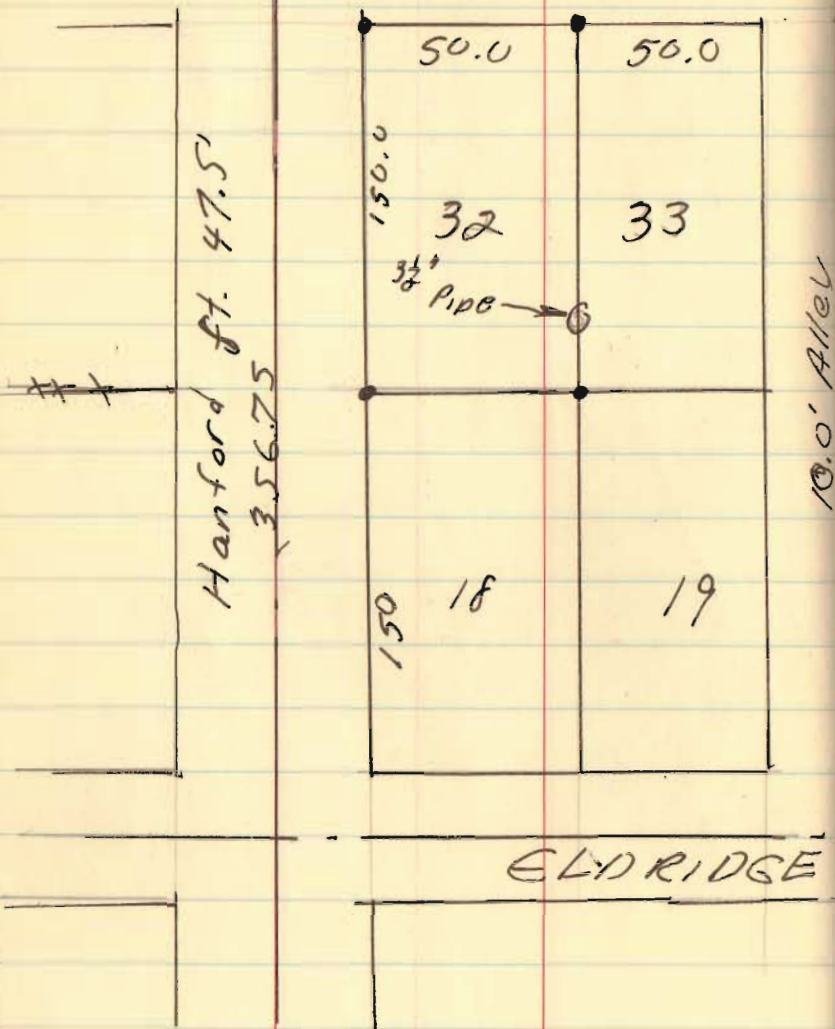


14



Albert Baker
Lot 32, Lewistown Ohio

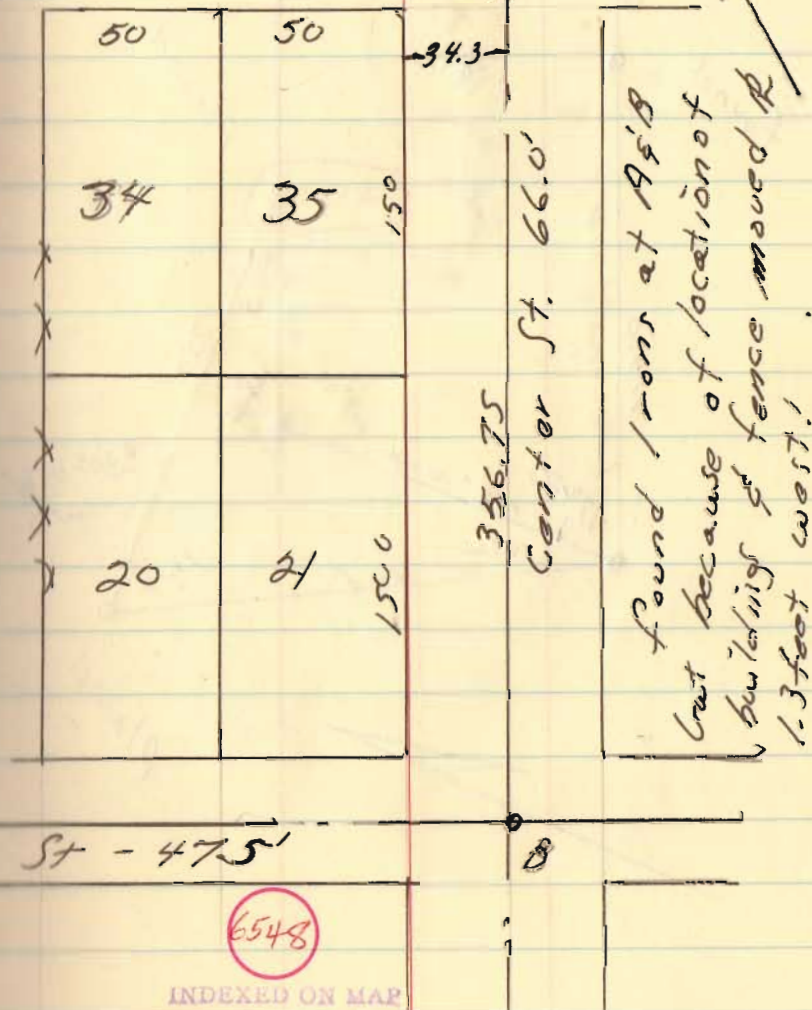
MAIN St.
measured



July 10, 1969

16

66.0'
268.05'



Arthur L. Reay (Lot #10)
 INDIAN LAKE West Side
 Stokes Twp

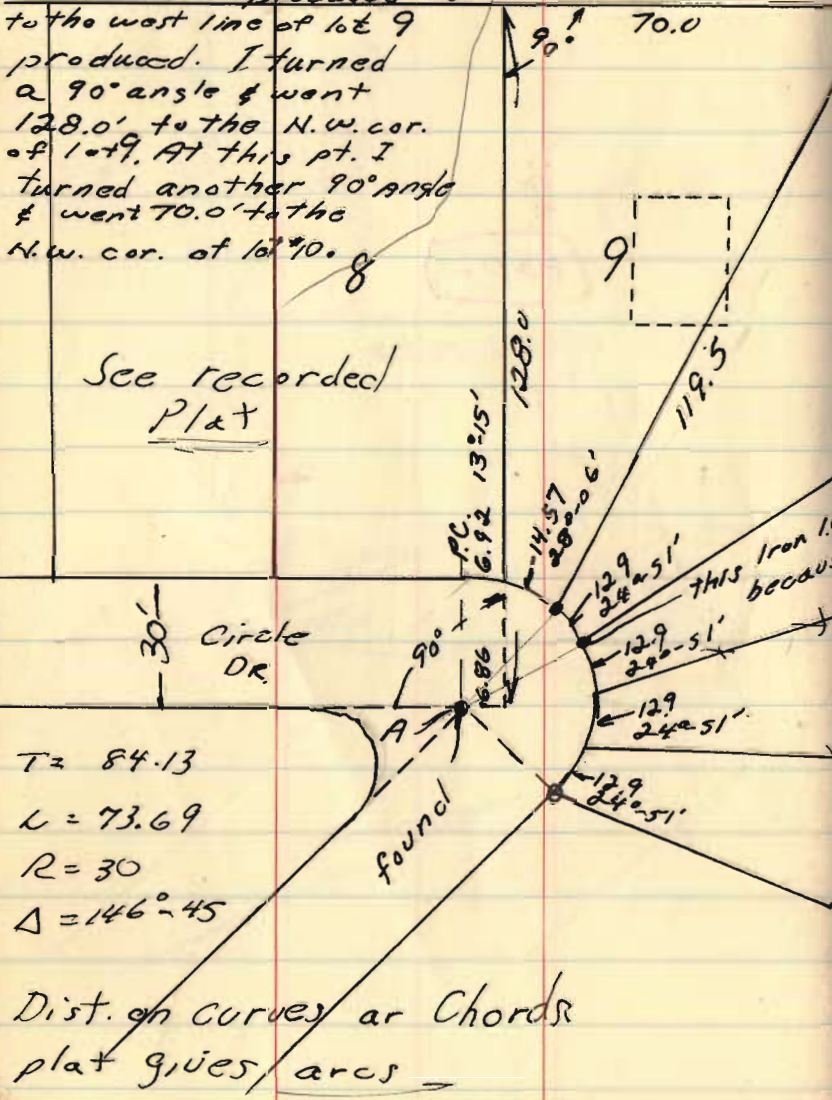
7-11-68

18

I found the pt. A & South
 R/W line of Circle Dr. as
 recorded. I produced 686'

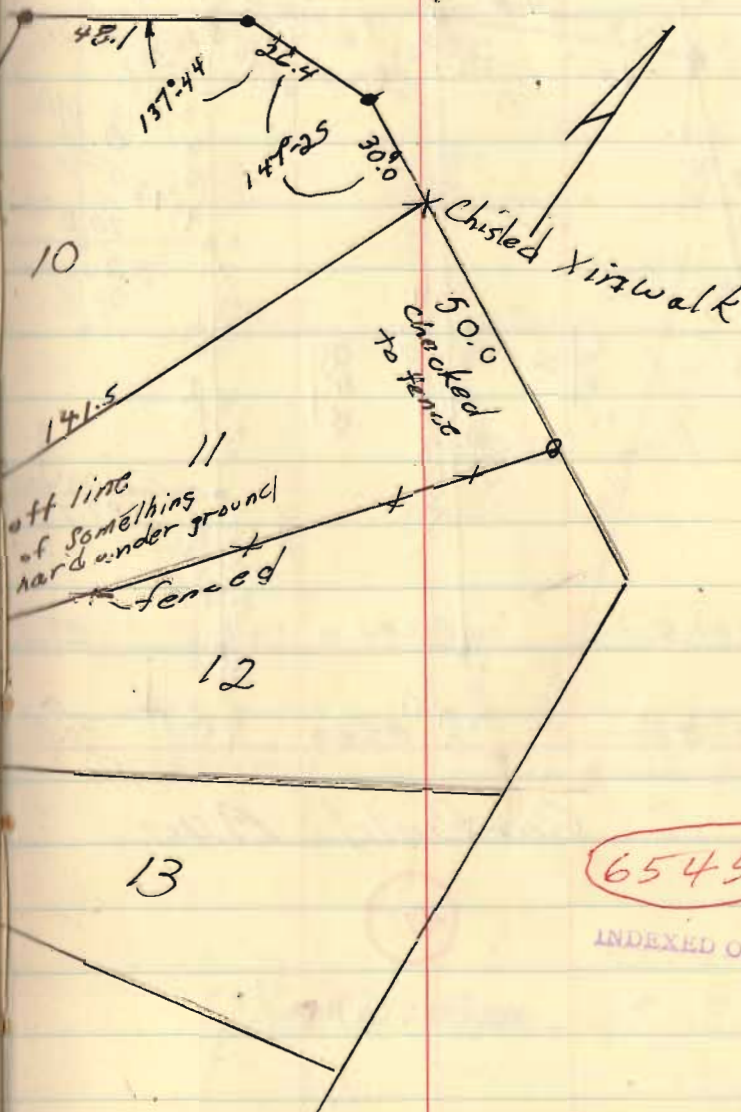
to the west line of lot 9
 produced. I turned
 a 90° angle & went
 128.0' to the N.W. cor.
 of lot 9. At this pt. I
 turned another 90° angle
 & went 70.0' to the
 N.W. cor. of lot #10.

See recorded
 Plat



$T = 84.13$
 $L = 73.69$
 $R = 30$
 $\Delta = 146^\circ 45'$

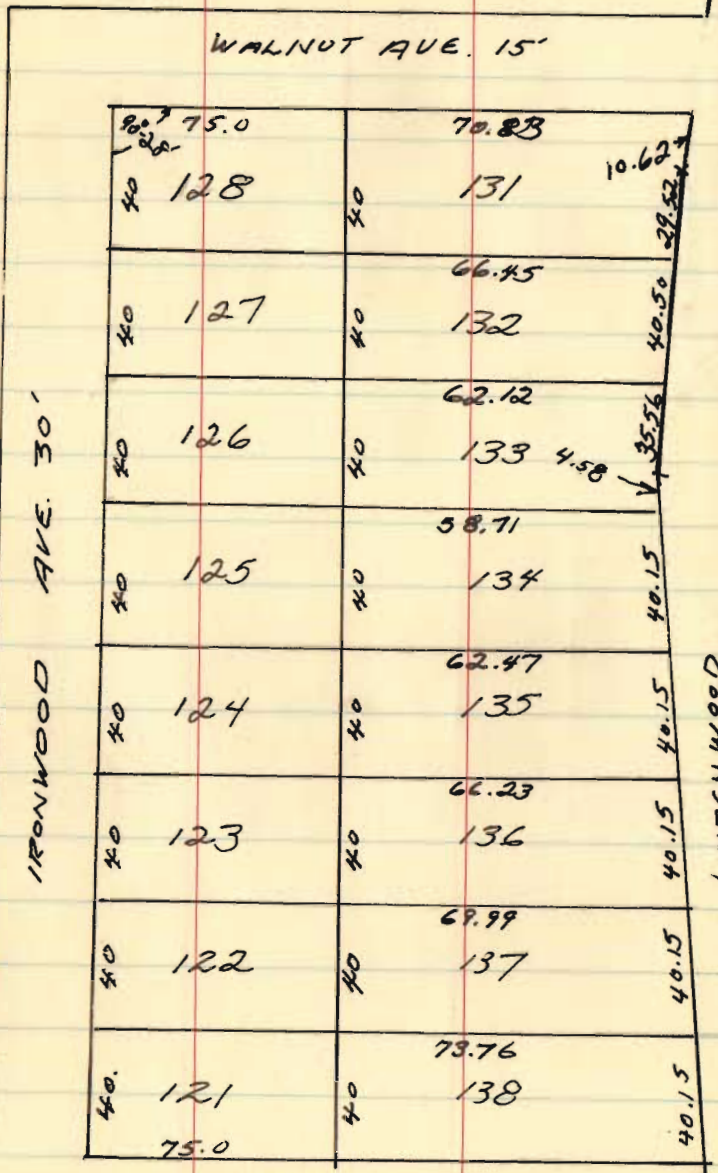
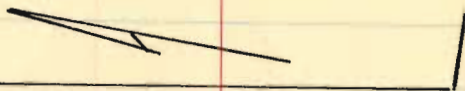
Dist. on curves or Chords
 plat gives arcs



6545

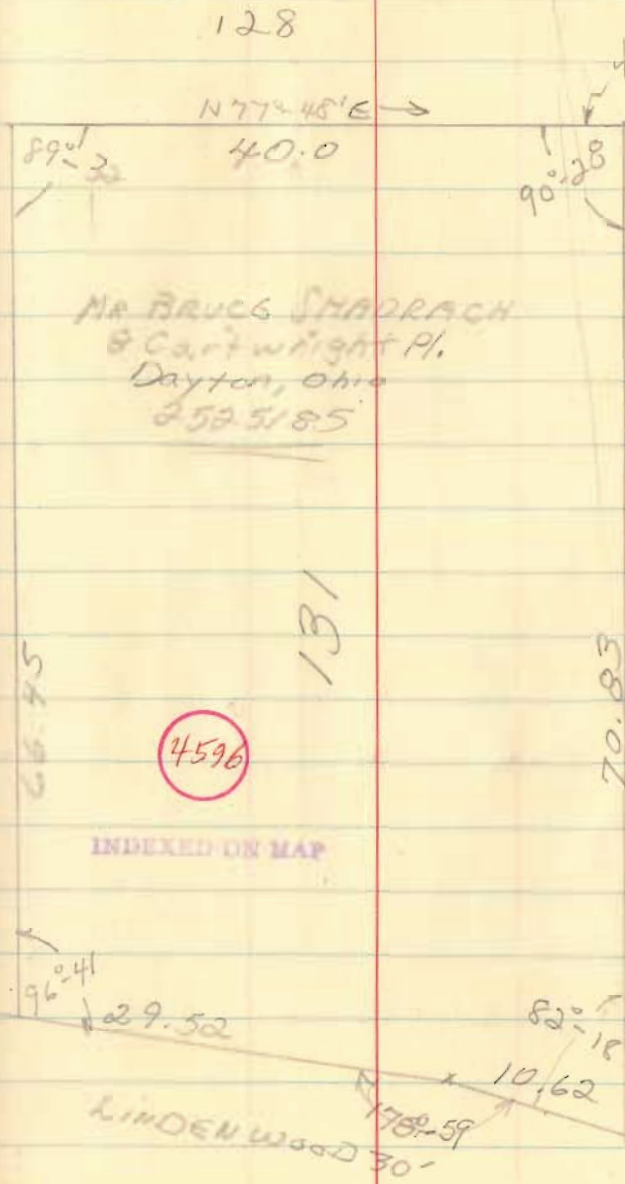
INDEXED ON MAP

MR. BRUCE Shadrach
Lot 131 Wise Allot.



Sept, 1969

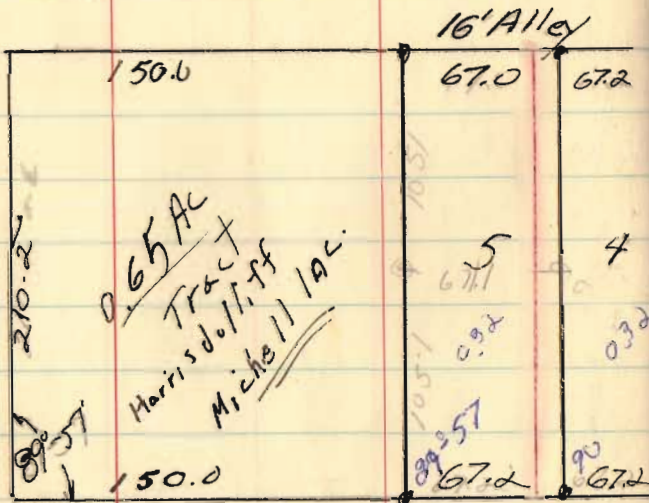
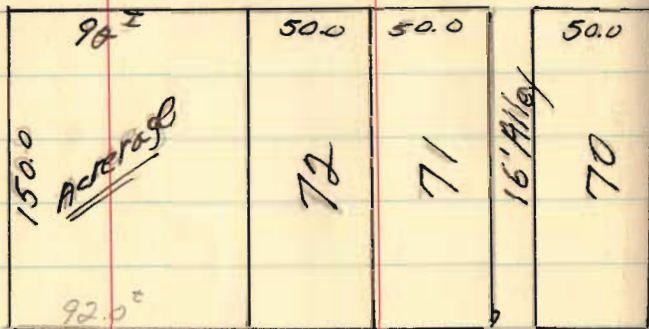
21



C.L. BALLINGER ; R. 1
 W. MANFIELD

MAIN ST 60'

STATE (MILL) ST. 40'
 ← N 74° - 33' W
 431.2

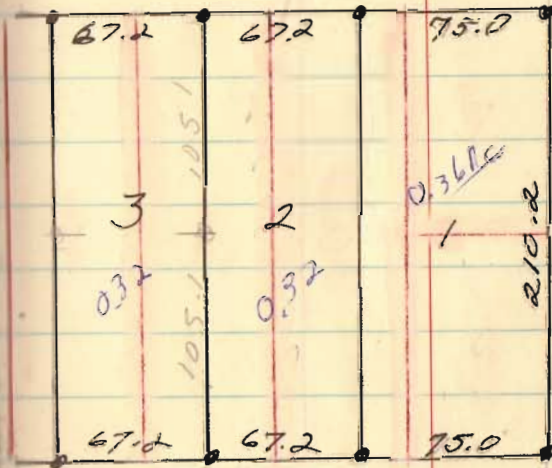
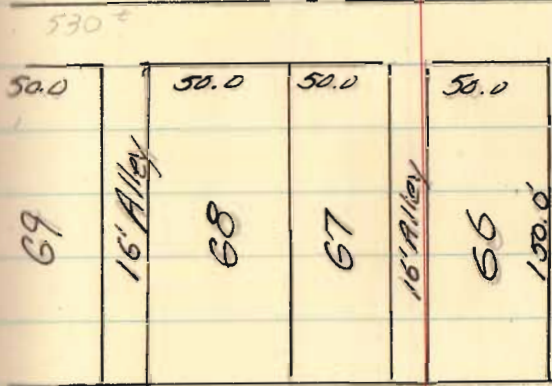


5338

DEAN ST. 40.0

Sept., 69

24



← N 74° - 30' W 431.2

40.0' PLW

See Bk 9, Pg 30

515° - 30' E

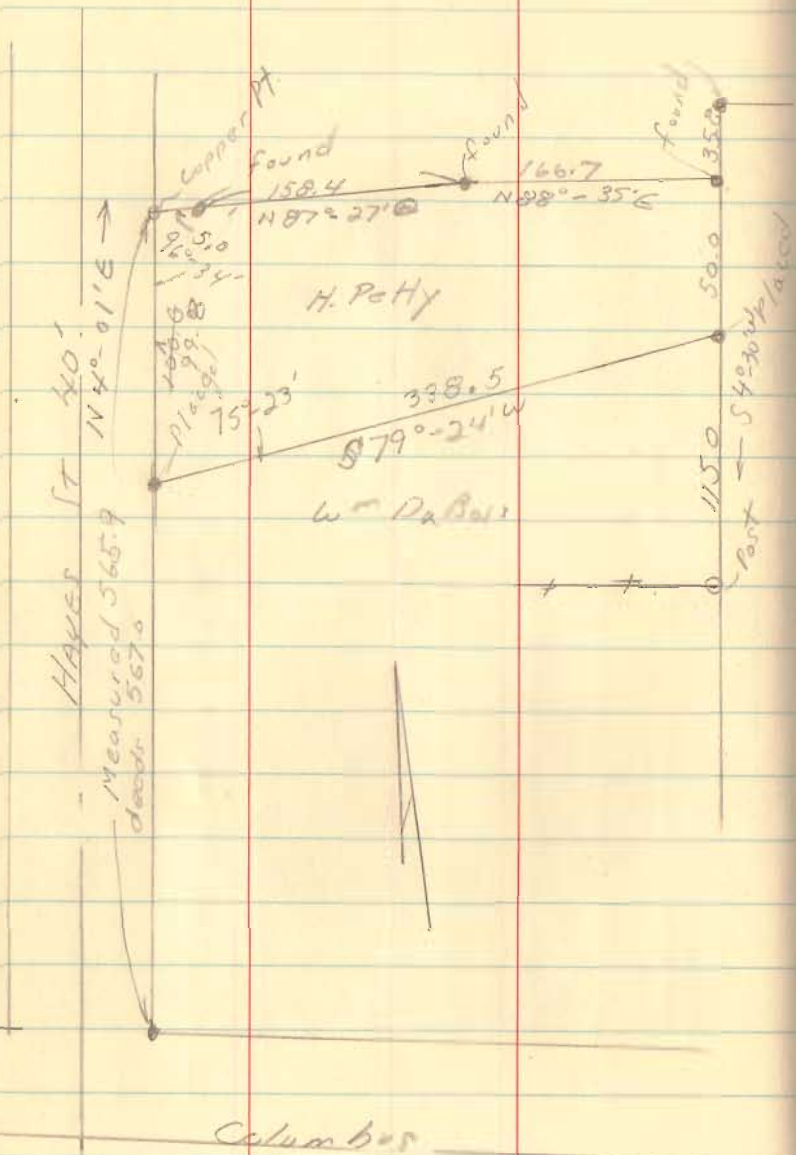
4676

INDEXED ON MAP

Petty Survey

Oct. 14, 1969

26

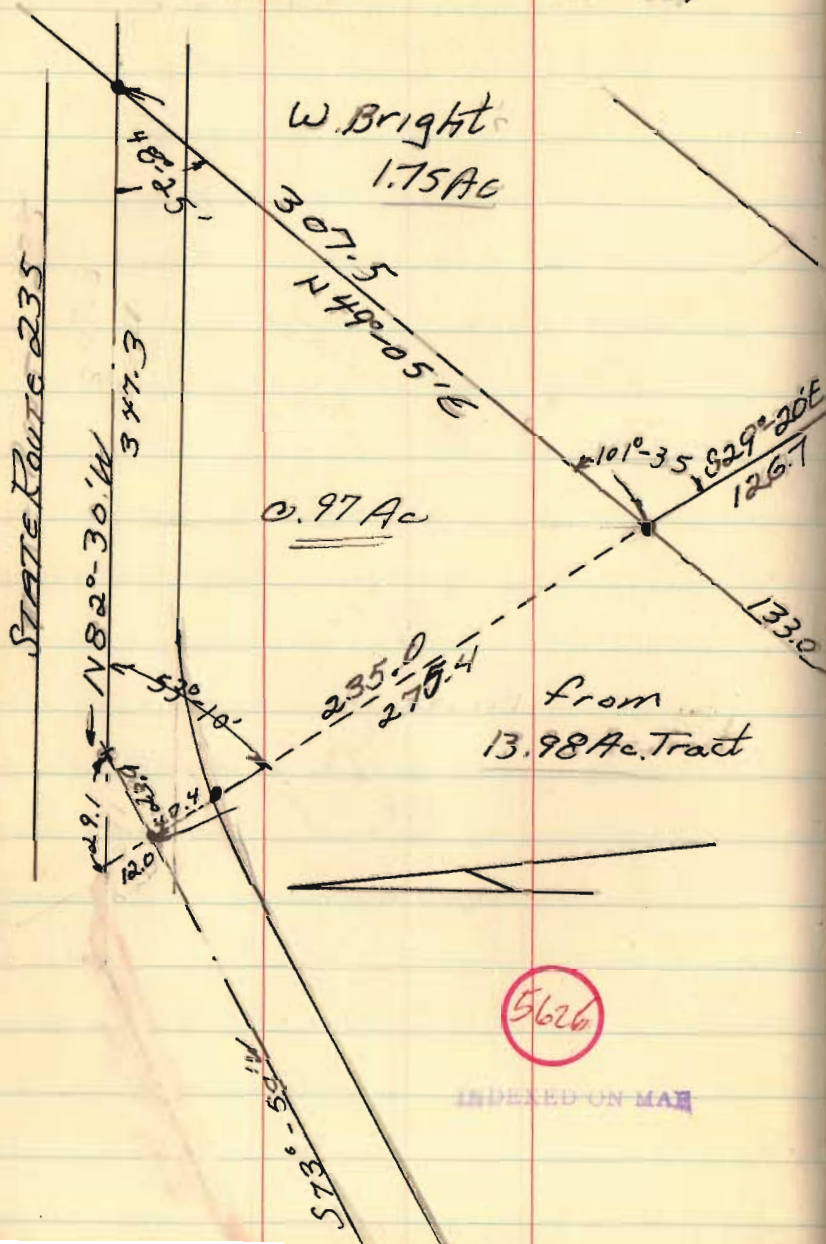


I measured 0.2' per 100'
on Mayer St. because of
shortage!

6551

INDEXED ON MAP

Kieffer to Bright
U.M.S. 12277, Richland Twp

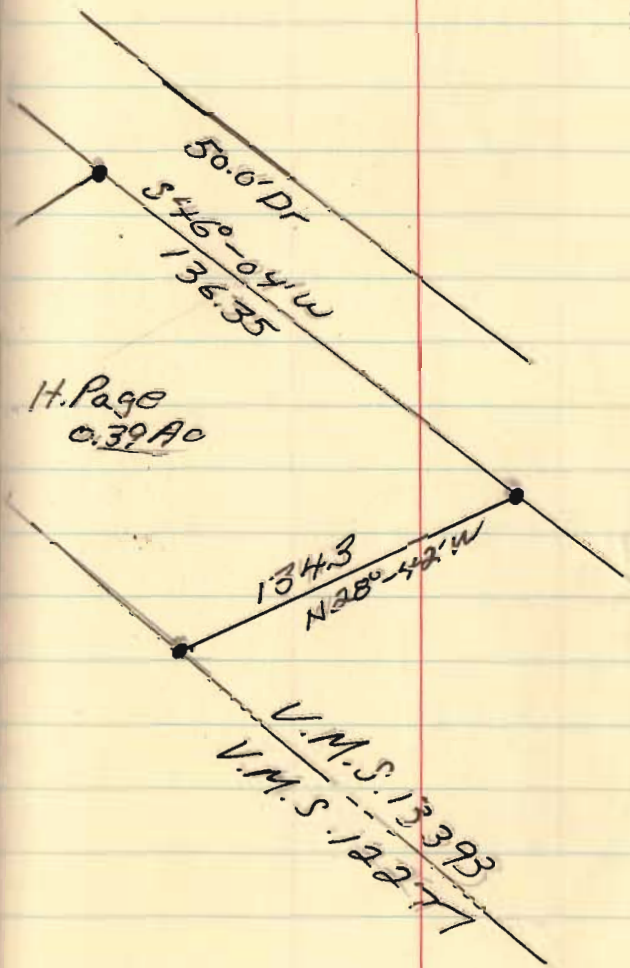


Oct. 18, 69

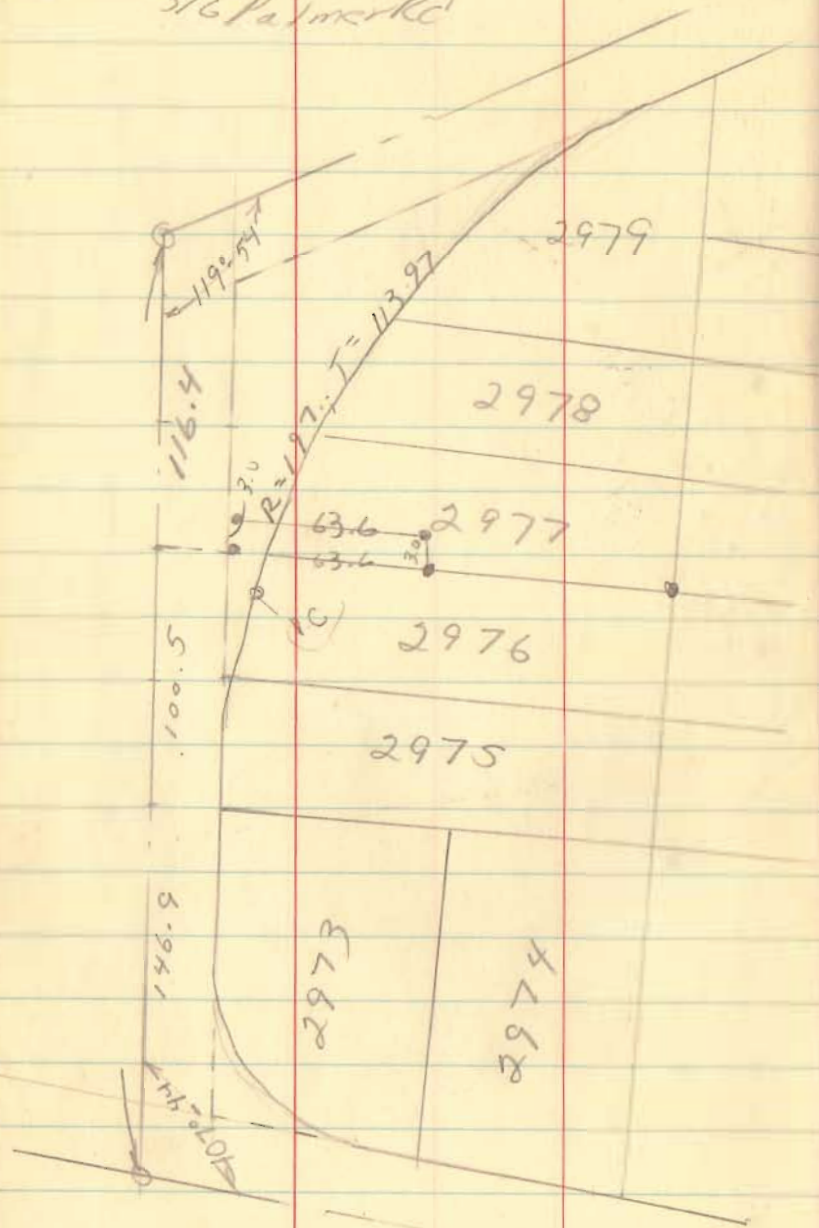
28

Wood row Bright
67 Truman Ave
Fairborn

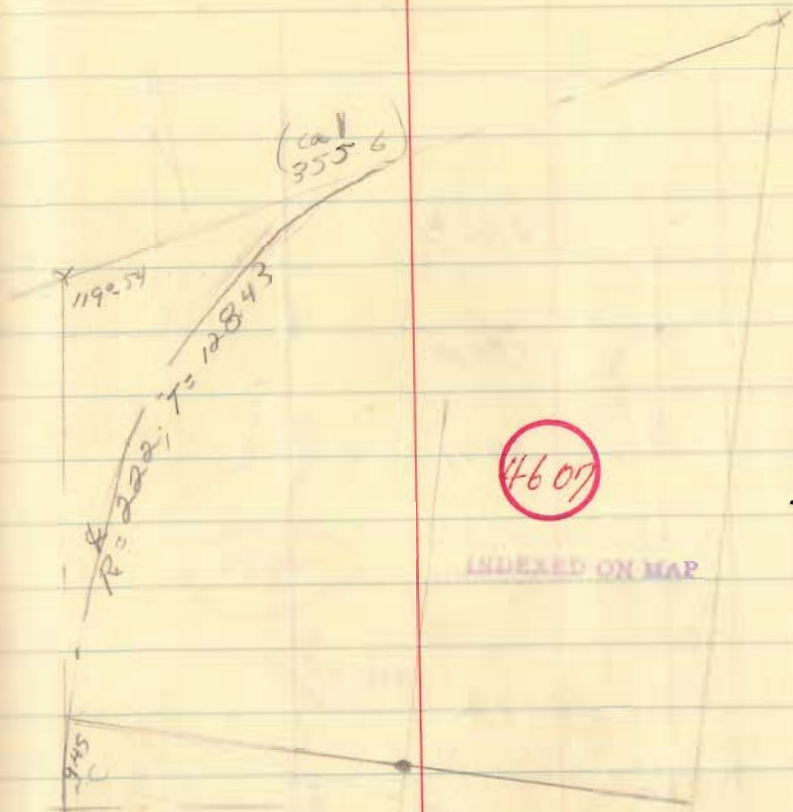
45324

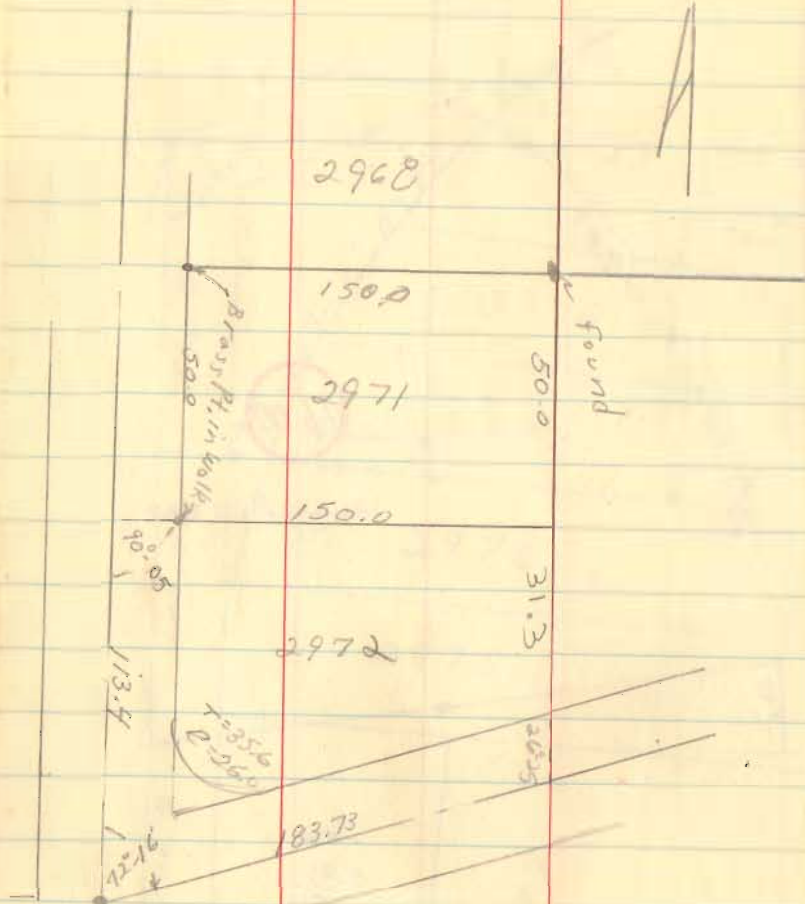


R. Cole
316 Palmer Rd



30





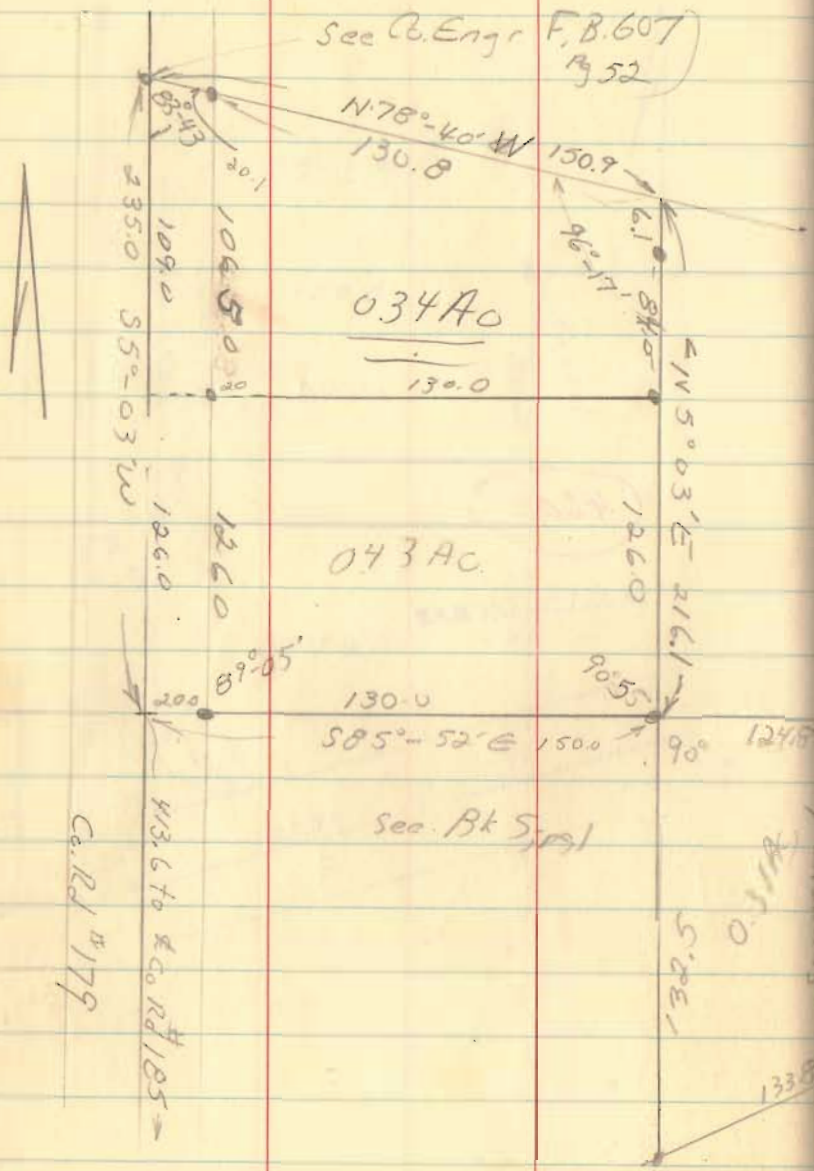
4607

INDEXED ON MAP

G. R. Home; Jeff. Twp
U.M.S. 3220

Nov., 69

32



034 AC

043 AC

See Bk 5, 191

C. Rd # 179

077 AC

S84°-57'E

0.32 AC

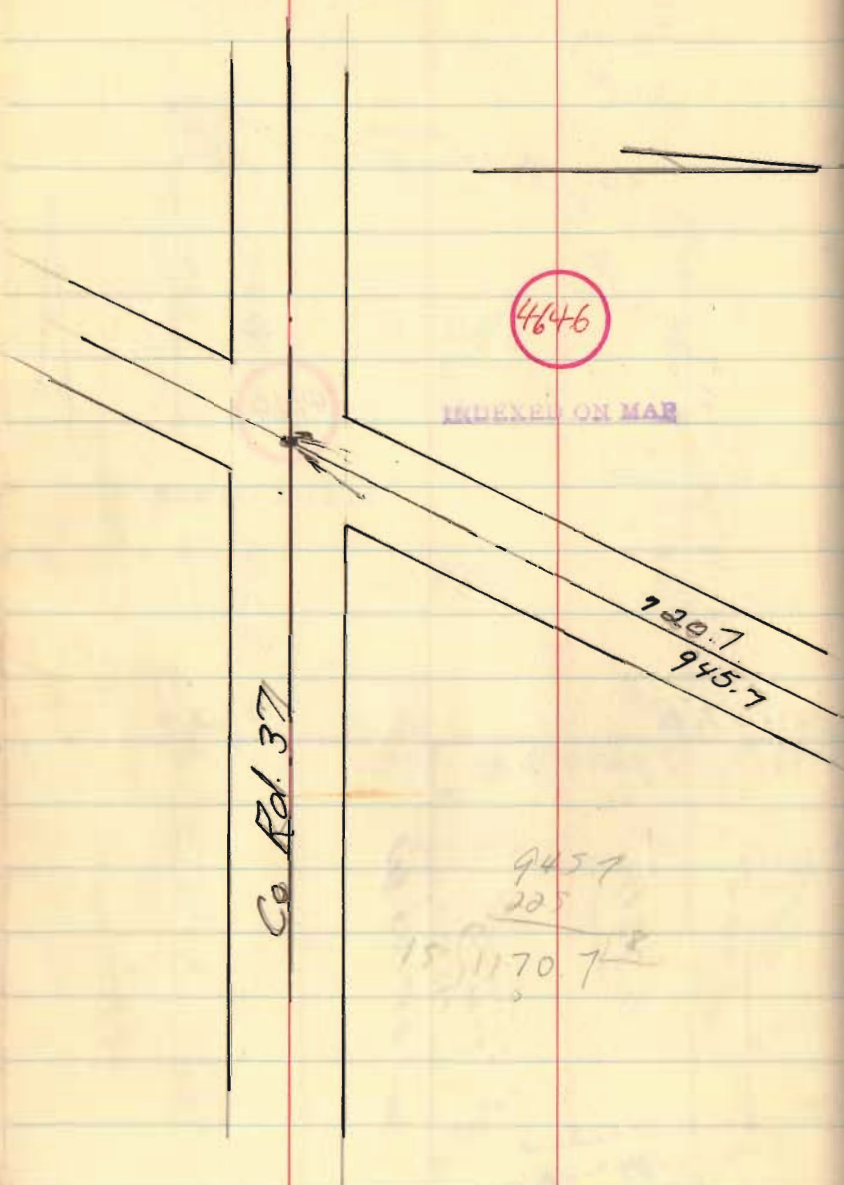
4929

INDEXED ON MAP

Surveyed
7-14-71
1840

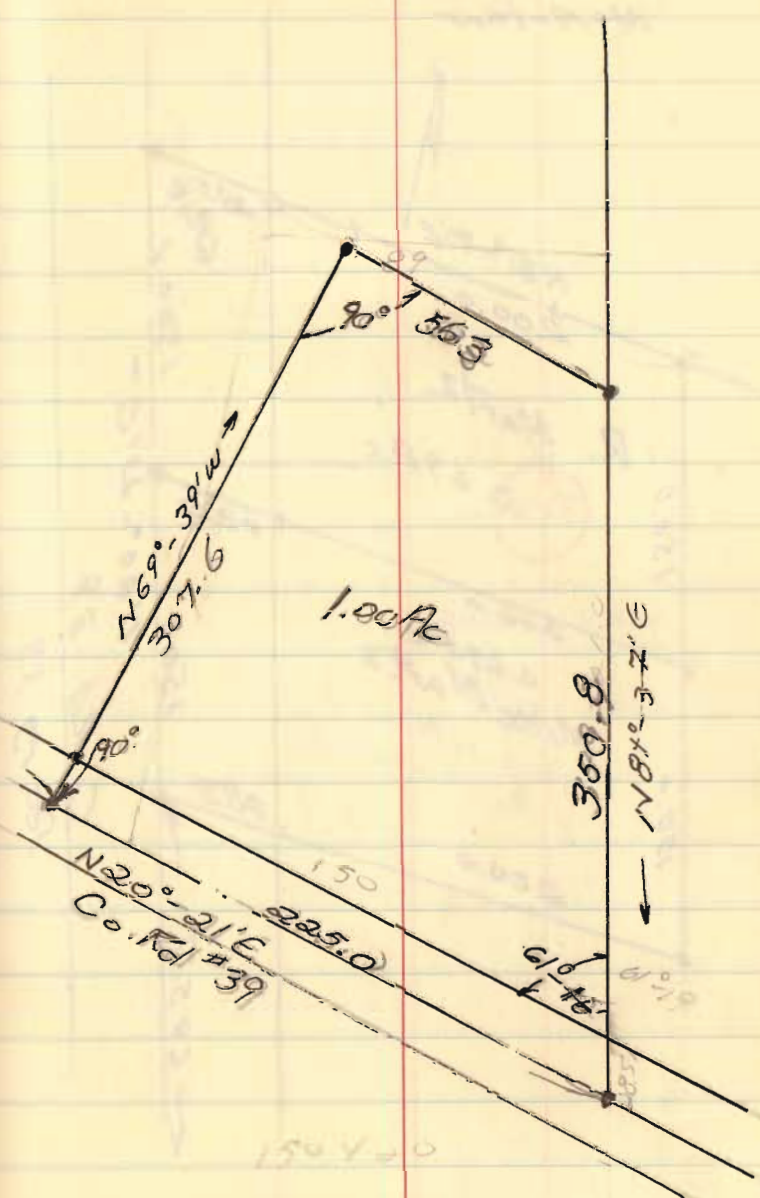
S55°-03'W

Powers to Mertz
 V.M.S. 9904
 McArthur



Nov., 69

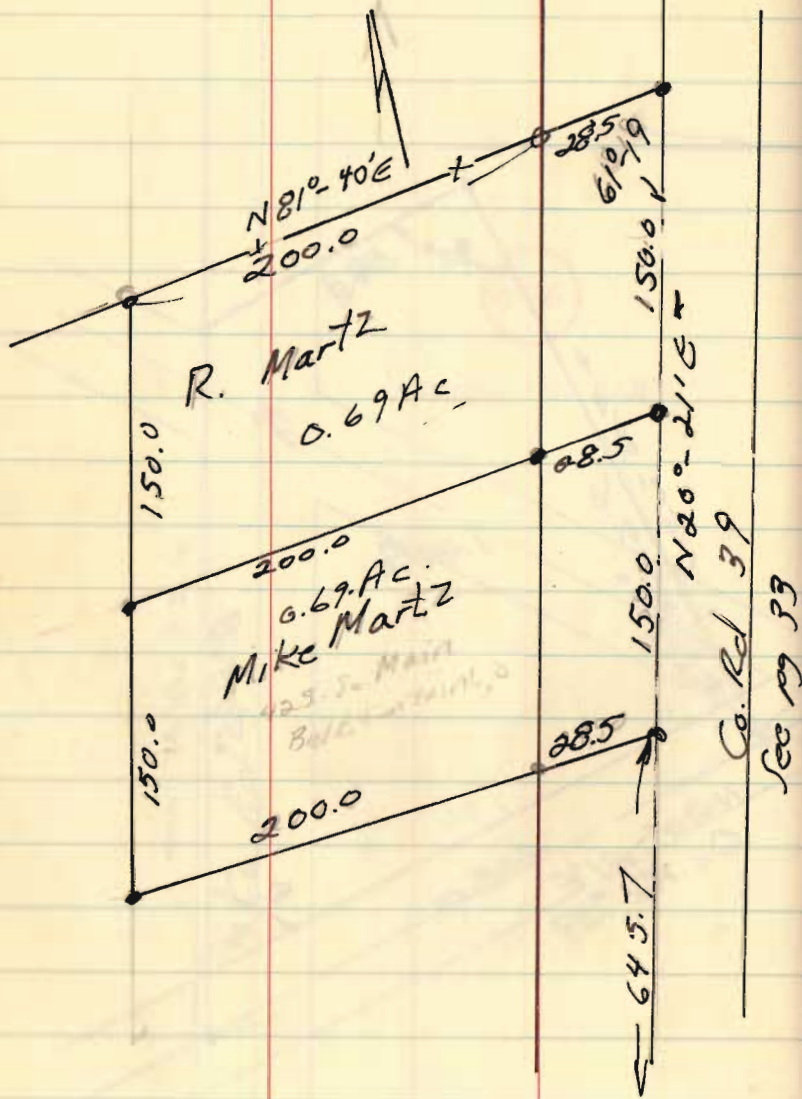
33



Powers to Martz
 V.M.S. 9904
 McArthur

May, 1970

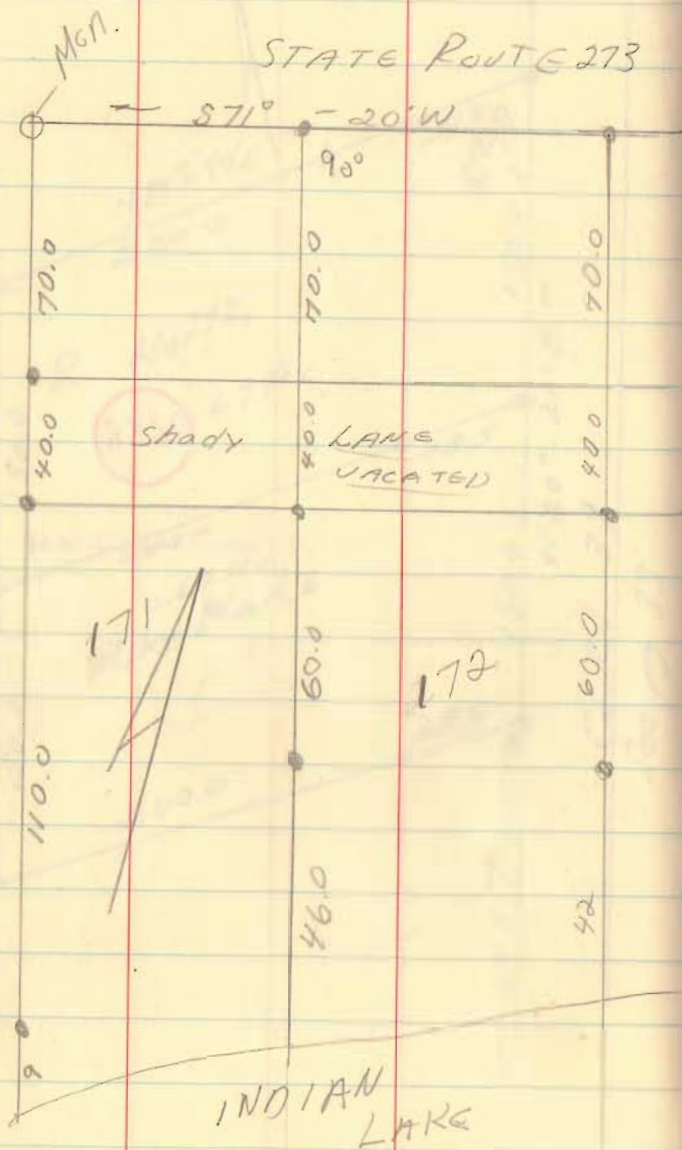
34



4688

INDEXED ON MAP

Lot 172, Fernwood #3
Long Isl.

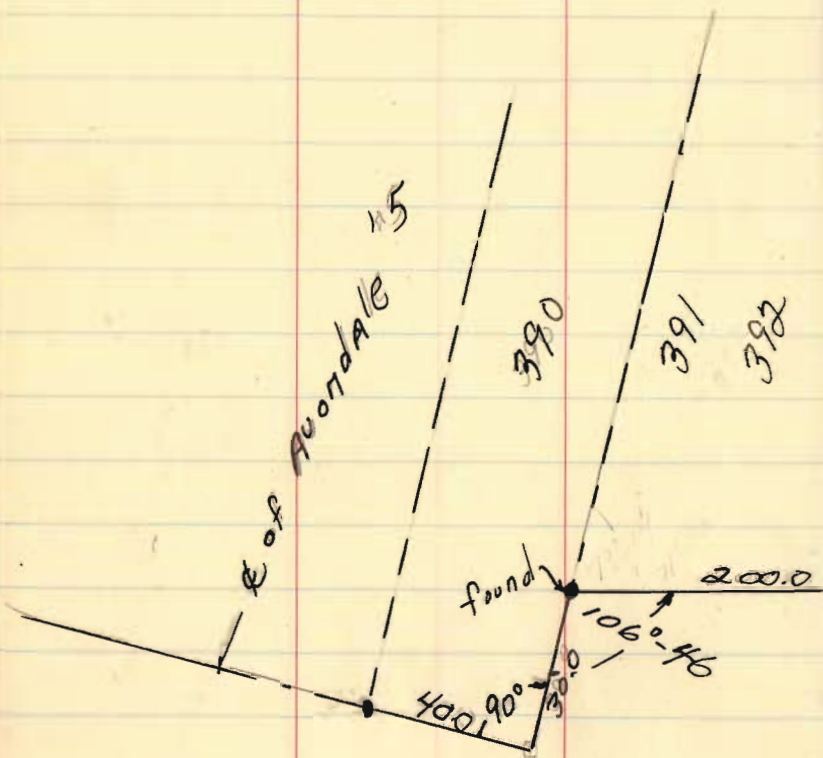


35

6550

INDEXED ON MAP

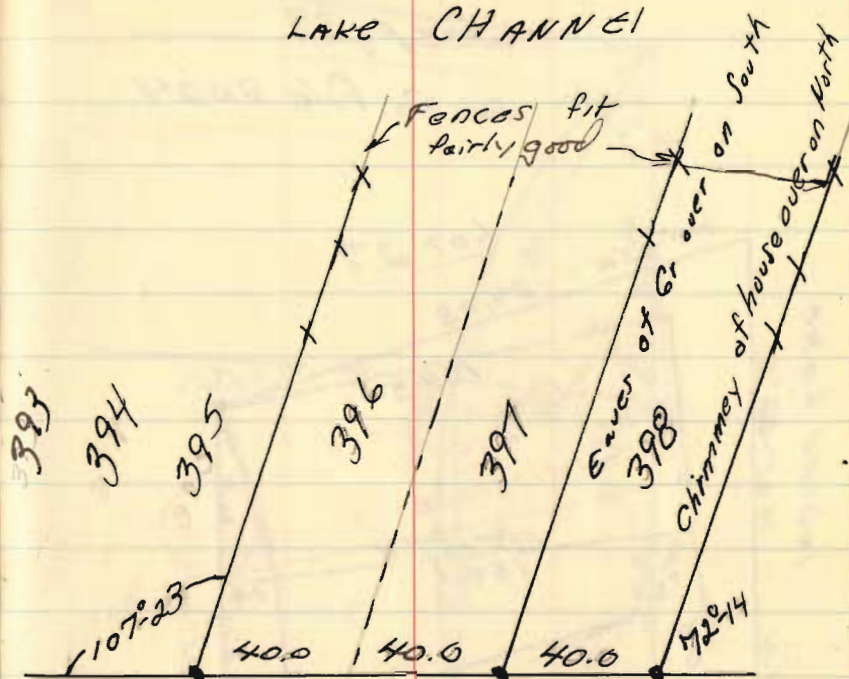
Clark on Avondale #6
842-2387



11-22-69

37

LAKE CHANNEL



LAKE DR. 40'

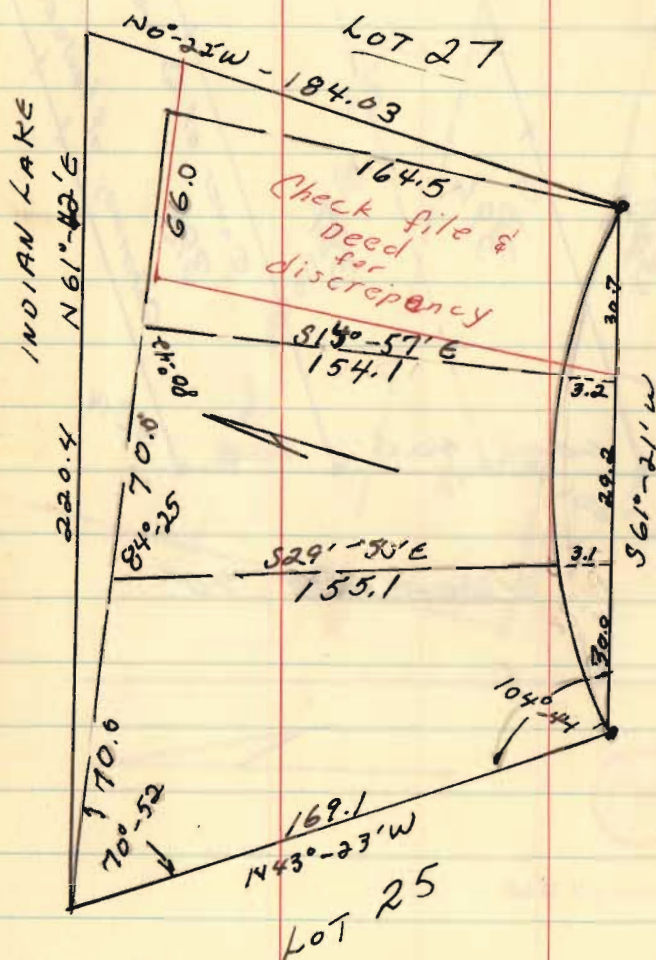
6553

INDEXED ON MAP

Lot #26
Seminole Shores Subd. #1

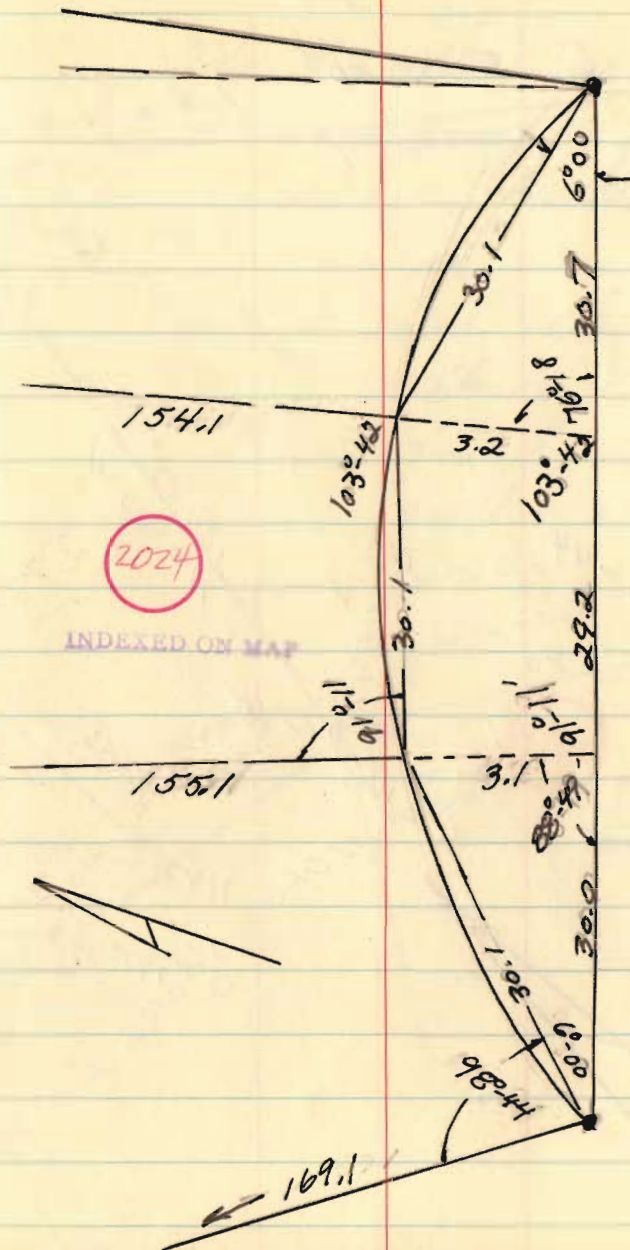
Sec, pg 39

also see Co. file 2024



April, 70

38



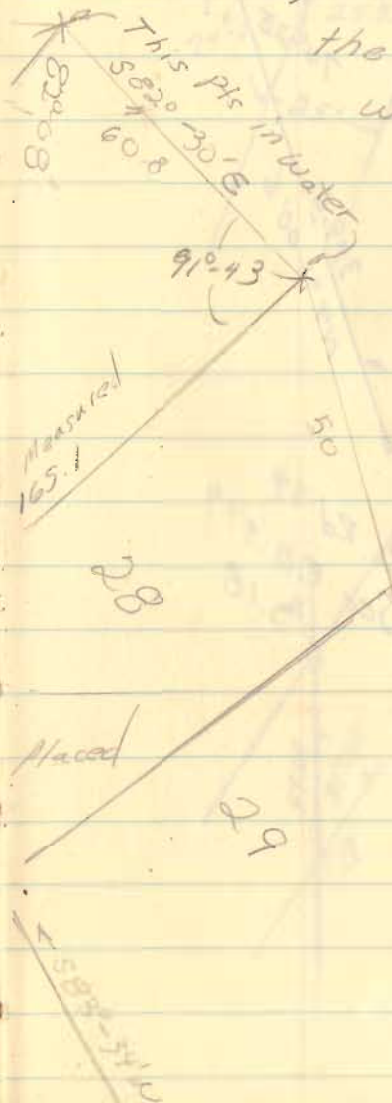
Lot #27, Seminole Shore
Subd #1
for
C. Rumph



Dec. 6, 1949

39

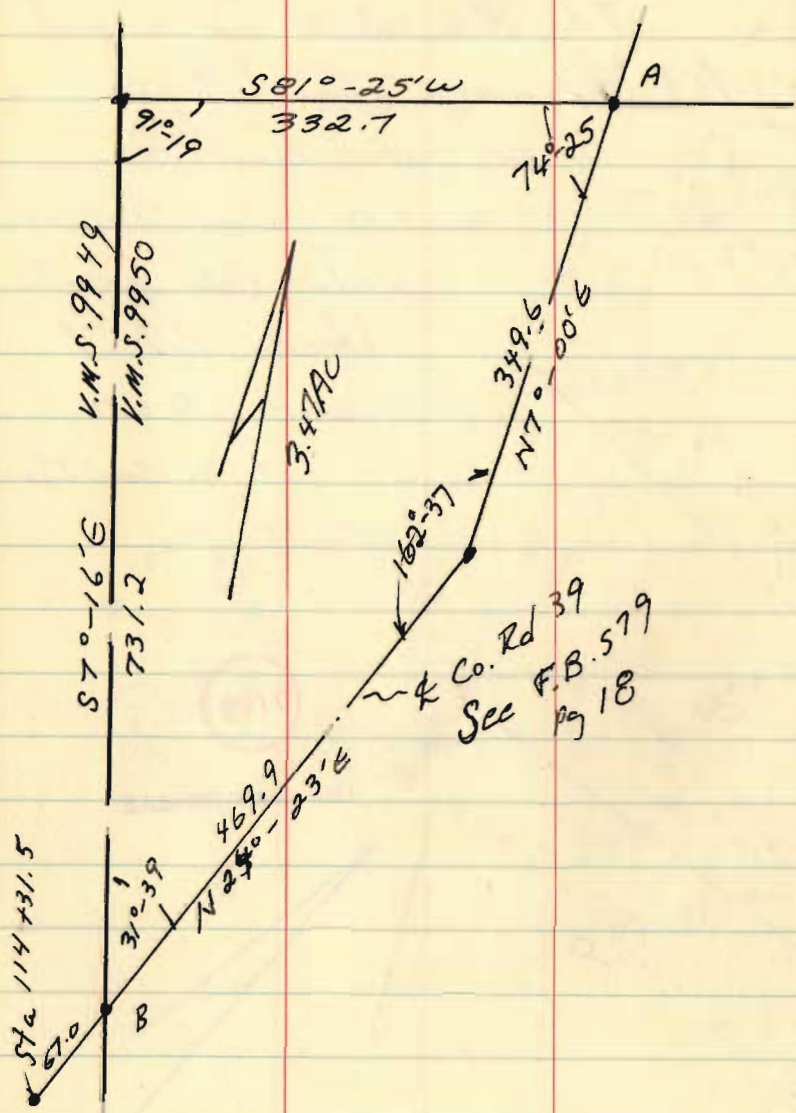
The N.E. & N.W. Corners of
lot #27, were about 18' in
the lake, but the
water was frozen
solid. On Seminole
Shore Dr. I
found Iron
on lot 31, 32 & 33.



7109

INDEXED ON MAP

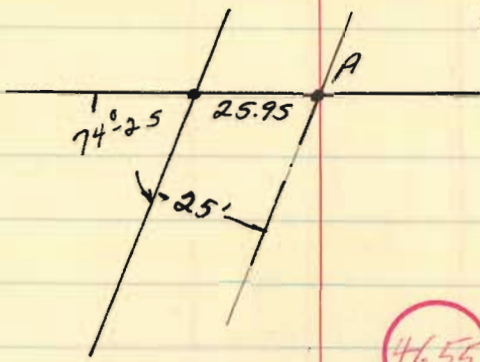
Milroy to Comer
 V.M.S. 9950
 Richland Twp.



12-20-69

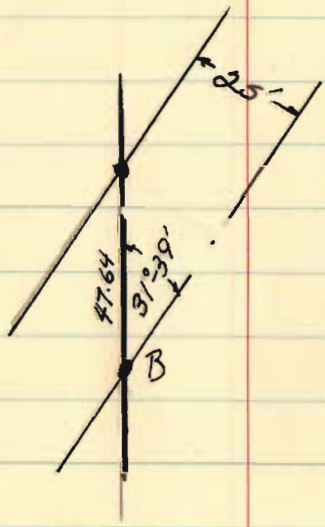
40

464-3526



4655

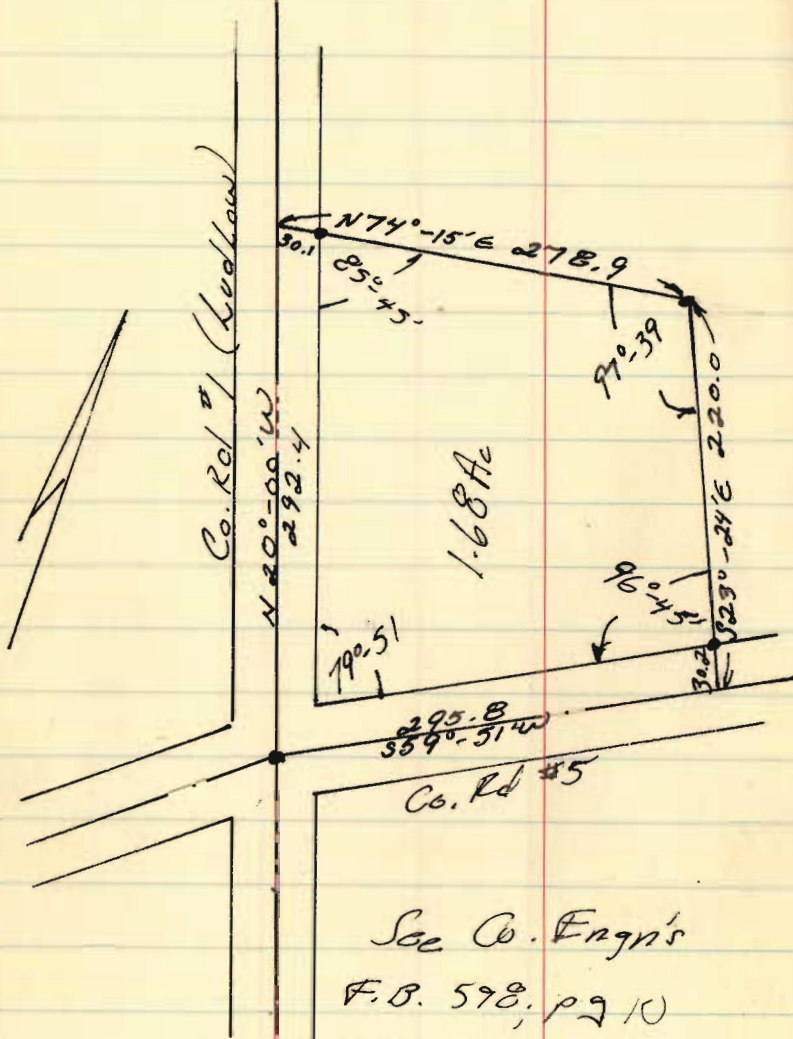
INDEXED ON MAP



J. Howard Yoder
V.M.S. 4493-4525
Monroe Twp

12-20-69

42

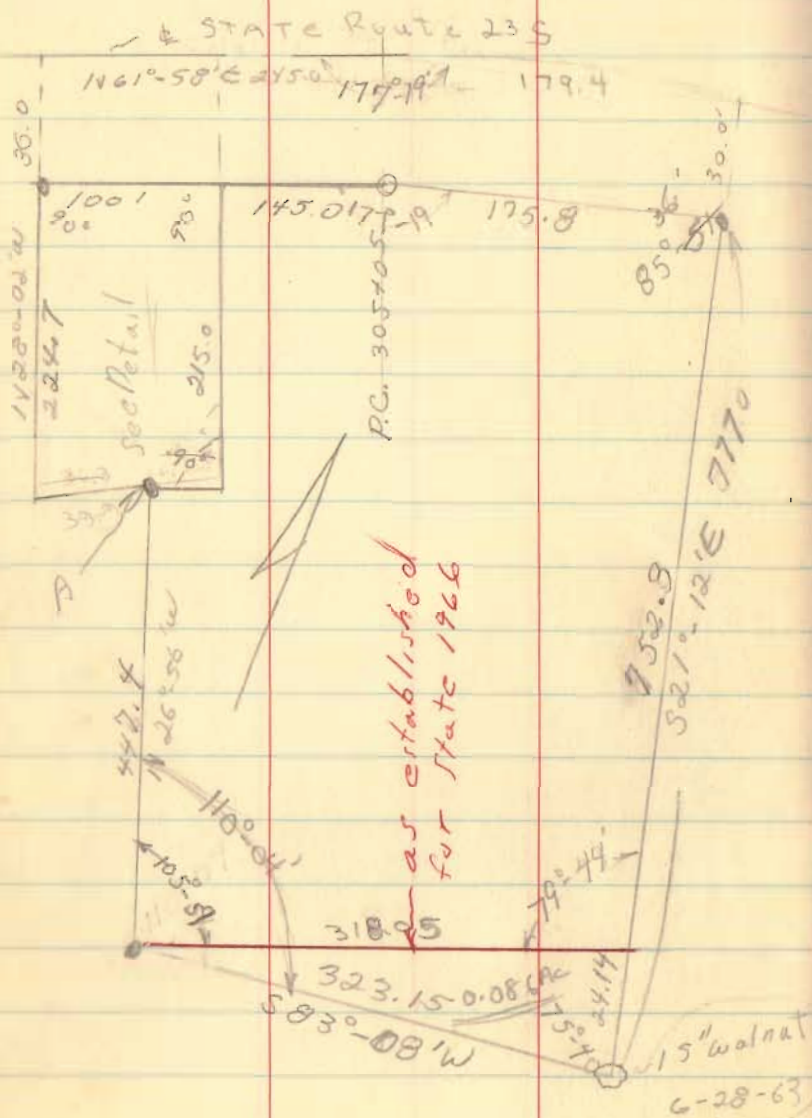


4650

INDEXED ON MAP

See Co. Eng'n's
F.B. 598, pg 10
F.B. 497, pg 65

Mr. Robt. Bockoven
Rich land Trap



March 21, 70

44

See BK 11, pg N

Σ Data

$$D = 3^{\circ}$$

$$R = 1909.86$$

$$T = 141.38$$

$$\Delta = 8^{\circ}-28'$$

4141

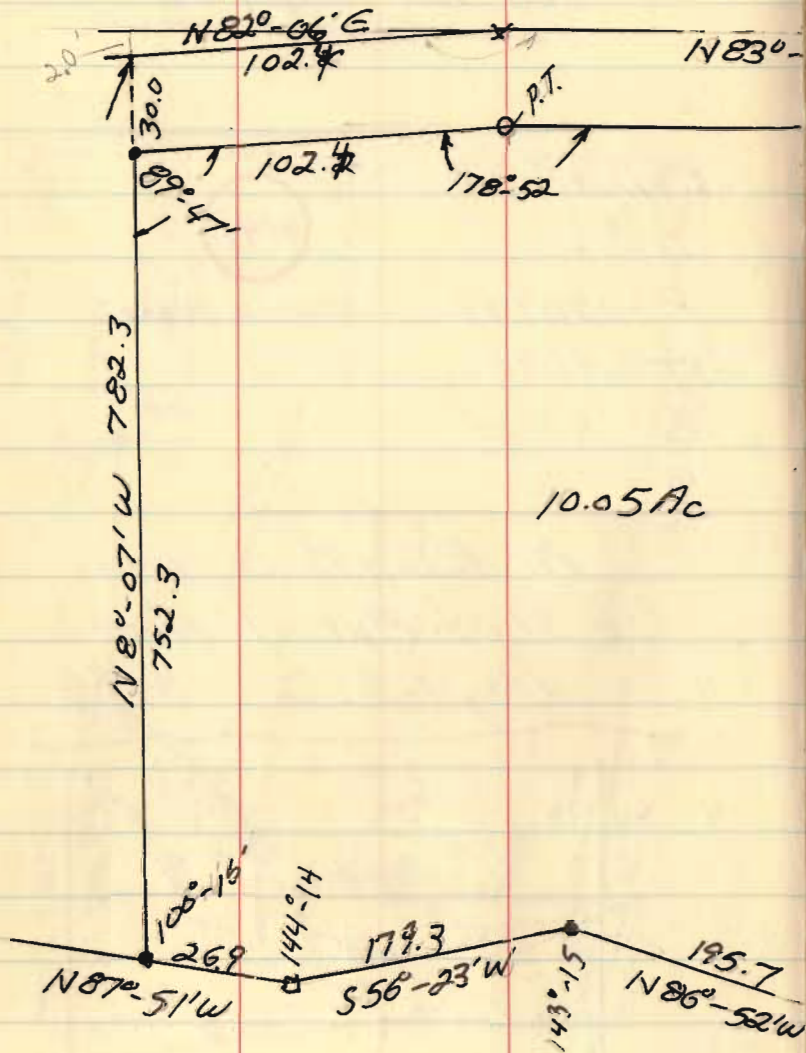
INDEXED ON MAP

Mr. Robt. Bockoven
3129 Marial Ave
Dayton, O. 45429



This pt now in Chancell

F. Hindell; (Route 2; Belle Center
 V.M.S. 12277
 Richland Twp

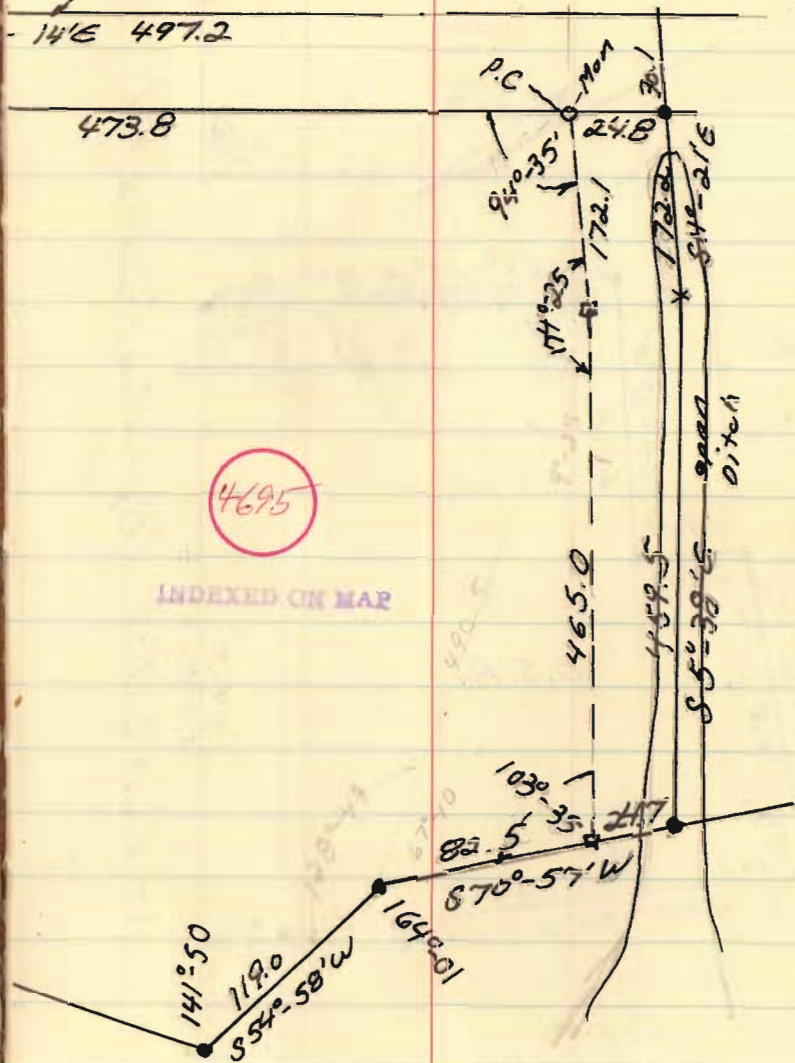


10.05 Ac

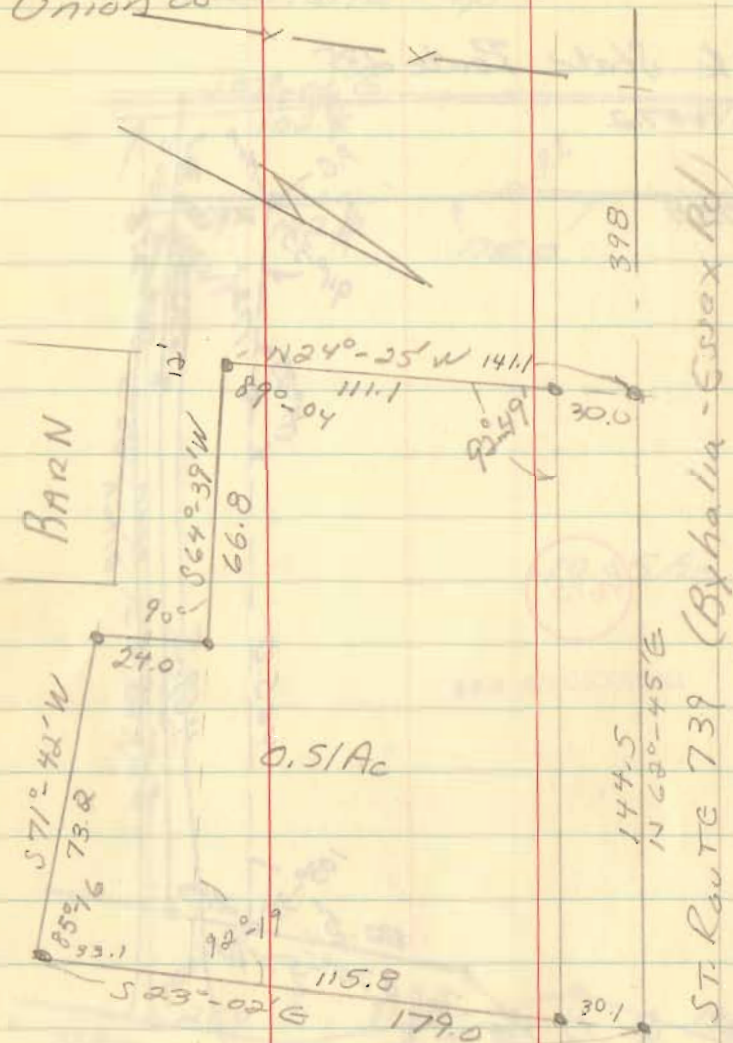
April 25, 1976

45

State Route 235



Fields to Britton
v.m.s. 9918, Washing-ton Twp
Union Co



MARCH 27, 70

46

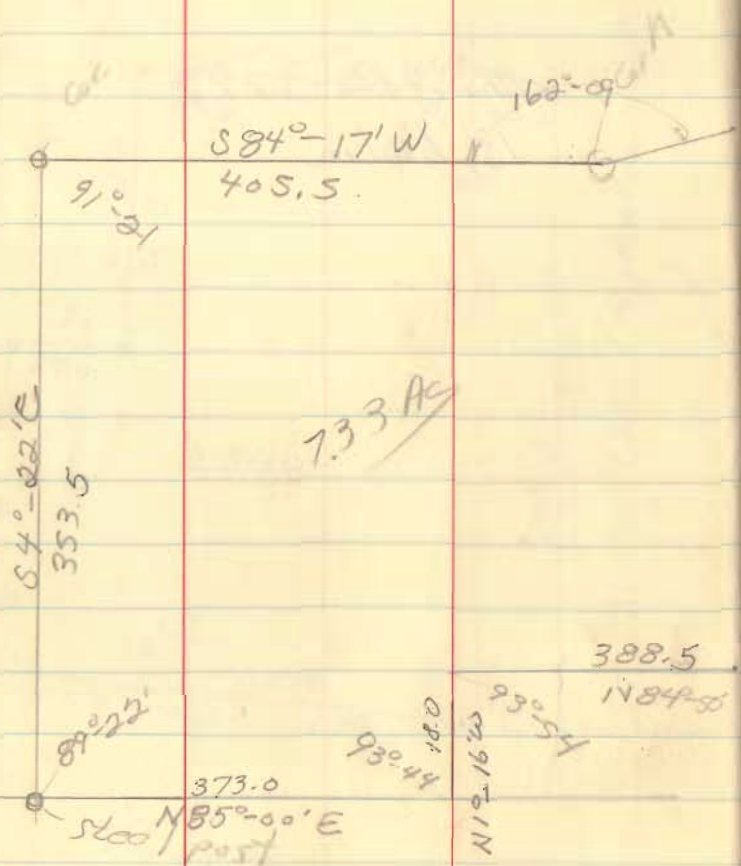
Dwight Fields
R.R. 1; Richwood, O

Ph. 982-3799

Byhalia

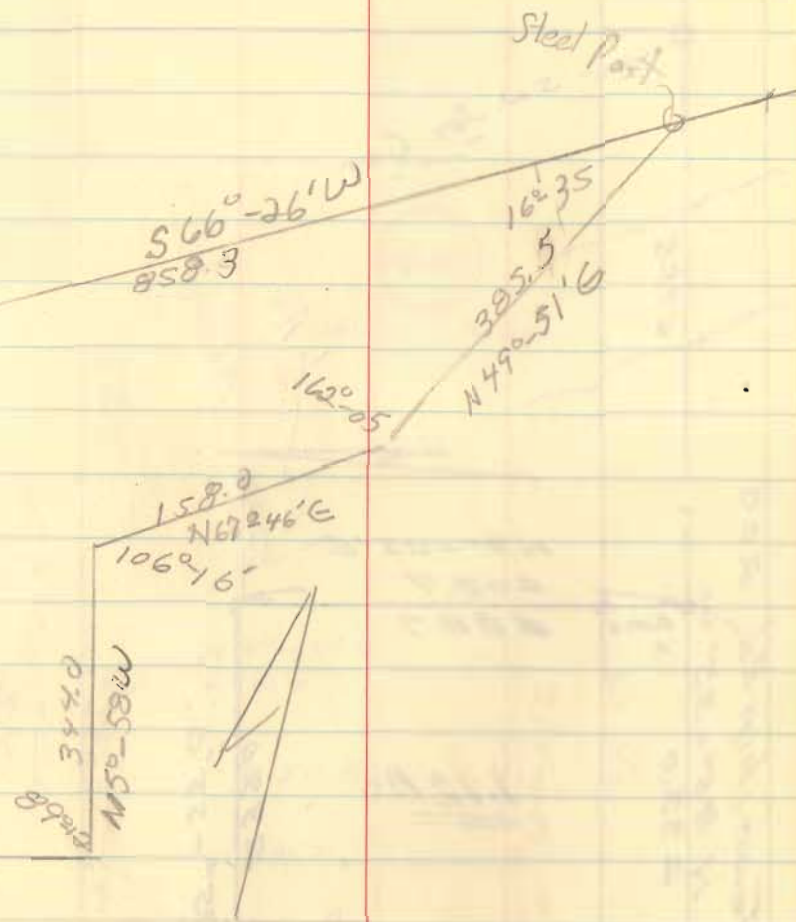
Wingfield to Gray
 U.M.S. 9916; Wash. Twp
 Union Co.

To: S. B. Gray
 Route #1
 W. Mansfield

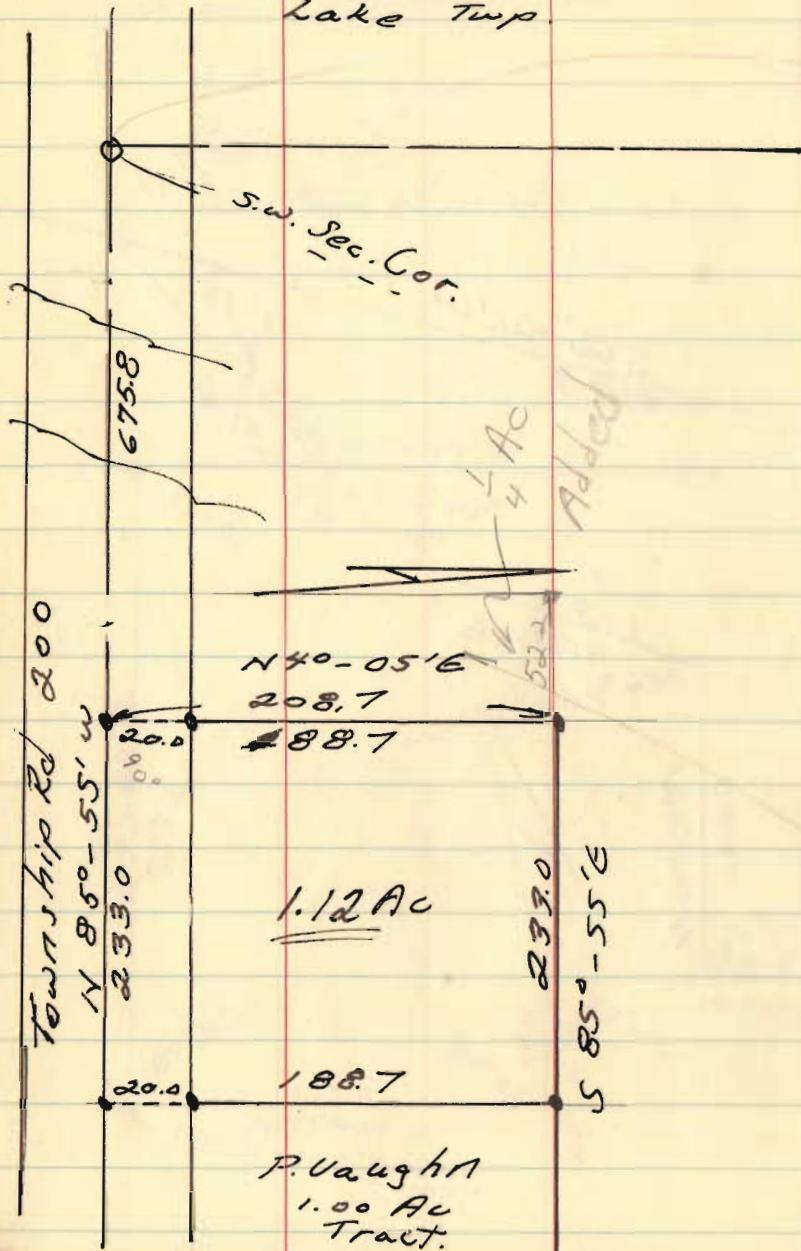


Mar. 27, 70

47



Harmon to Fent
 Sec. 33; T-4; R-14
 Lake Twp.



4-4-70

48



4640

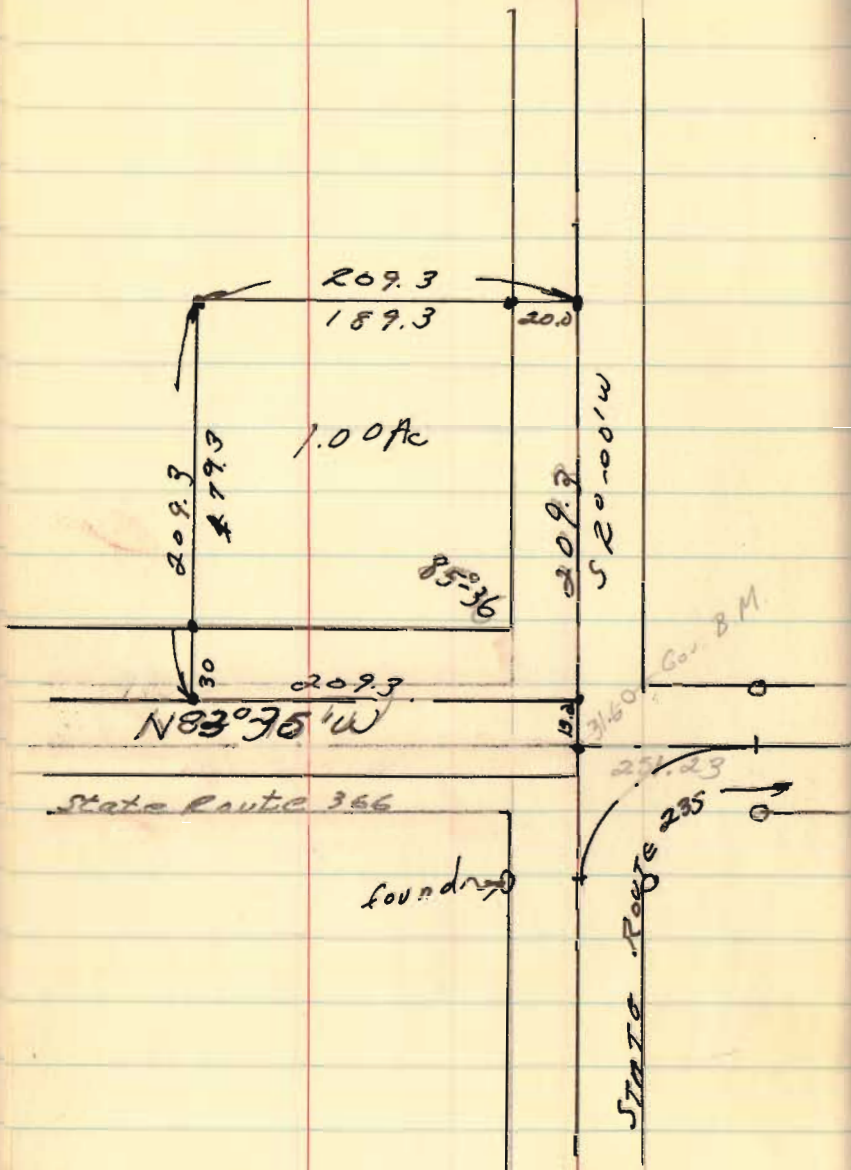
INDEXED ON MAP

May 1971

Siebeneck to Siebeneck
 Sec 15, T6S, R8E
 Stokes

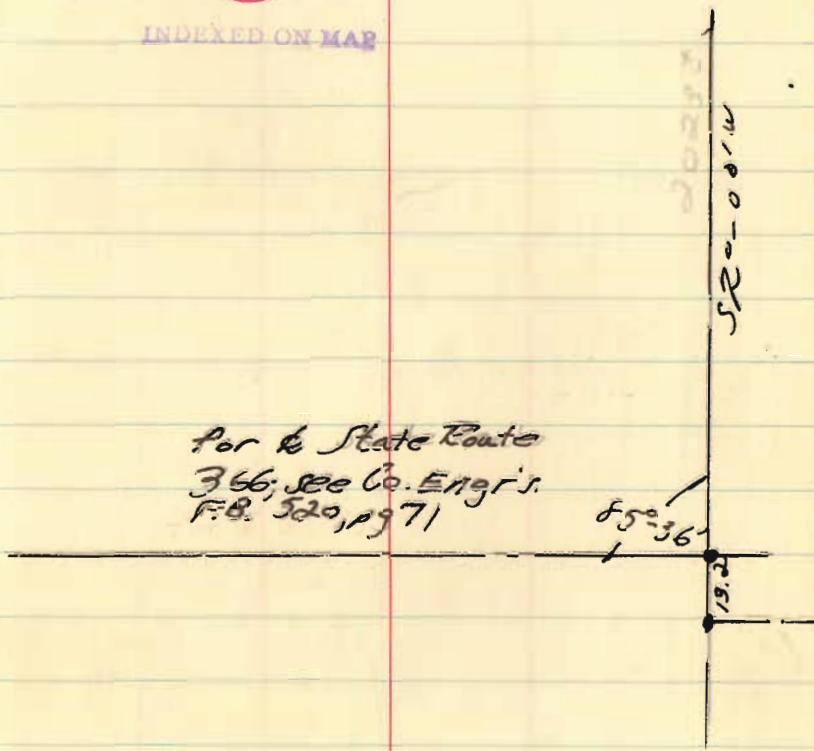
April 16, 70

50



4660

INDEXED ON MAP

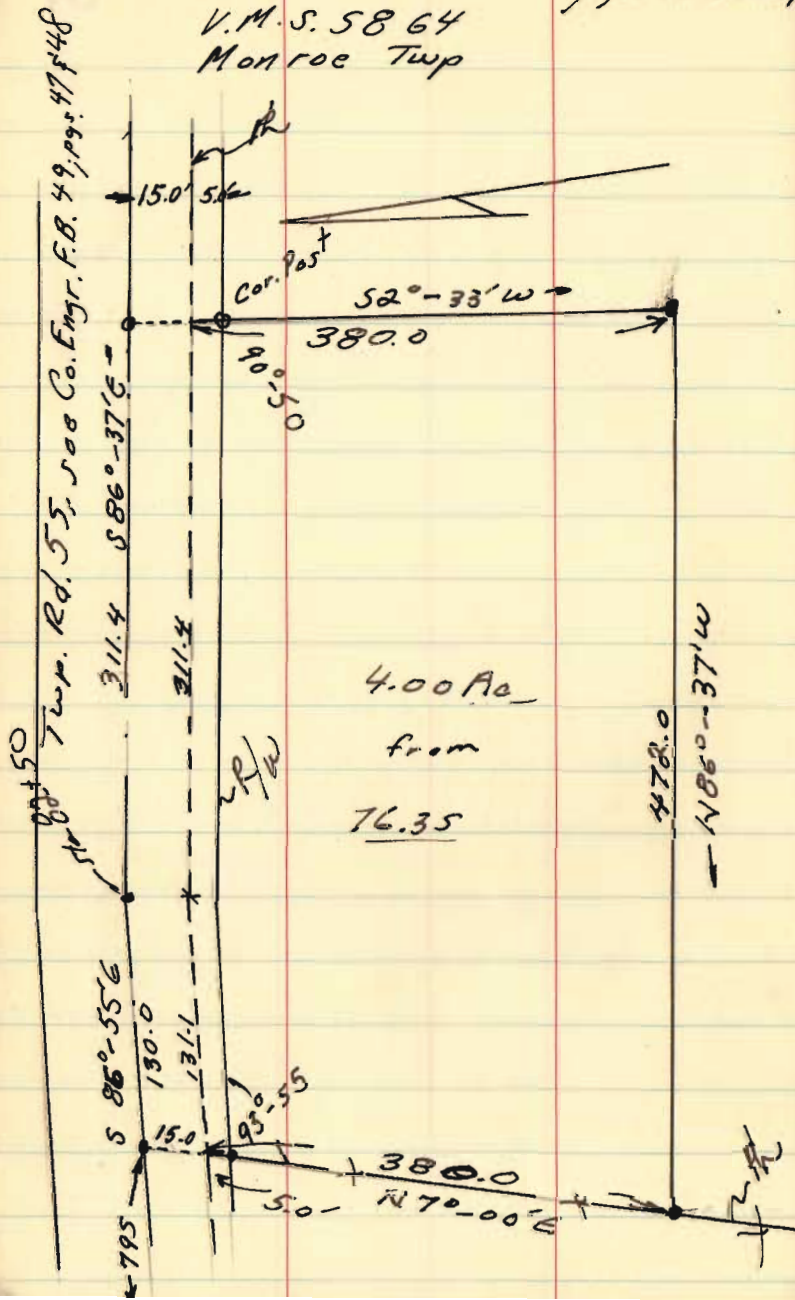


for the State Route
 366, see Co. Engr's
 F.B. 300, p 71

M-Clure to Hurley, for Sharp
 V.M.S. 5864
 Monroe Twp

April, 11, 70

52



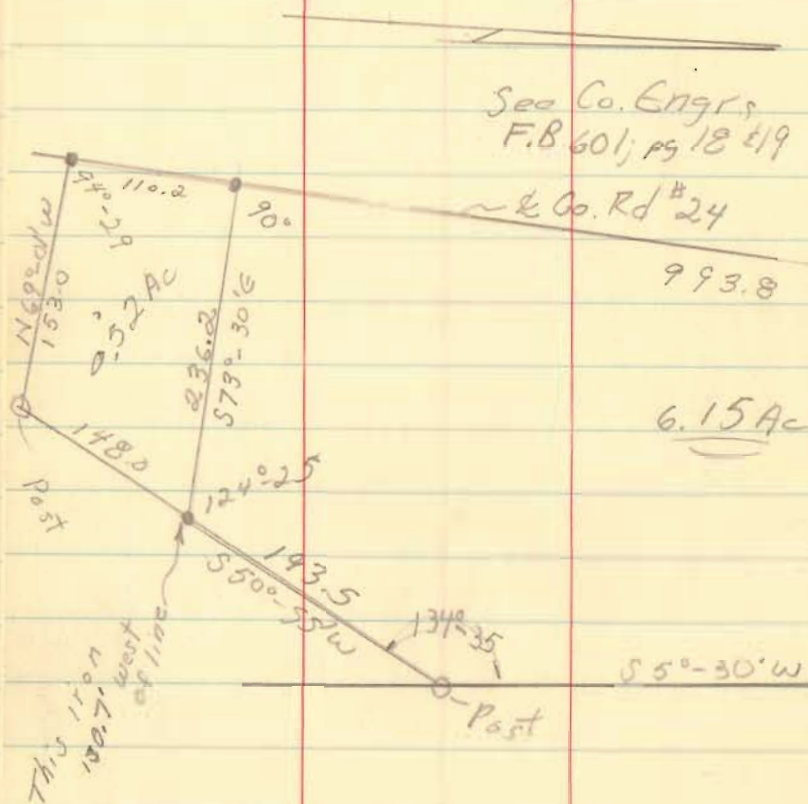
4649

INDEXED ON MAP

Roby Survey
 Sec. 15; Town 2, Range 14 M. R.
 Pleasant Twp.

April 18, 70

54



4693

INDEXED ON MAP

N 16° - 30' E

993.8

100° - 24'

339.0

180.0
 S 83° - 54' E

883.0

334.0

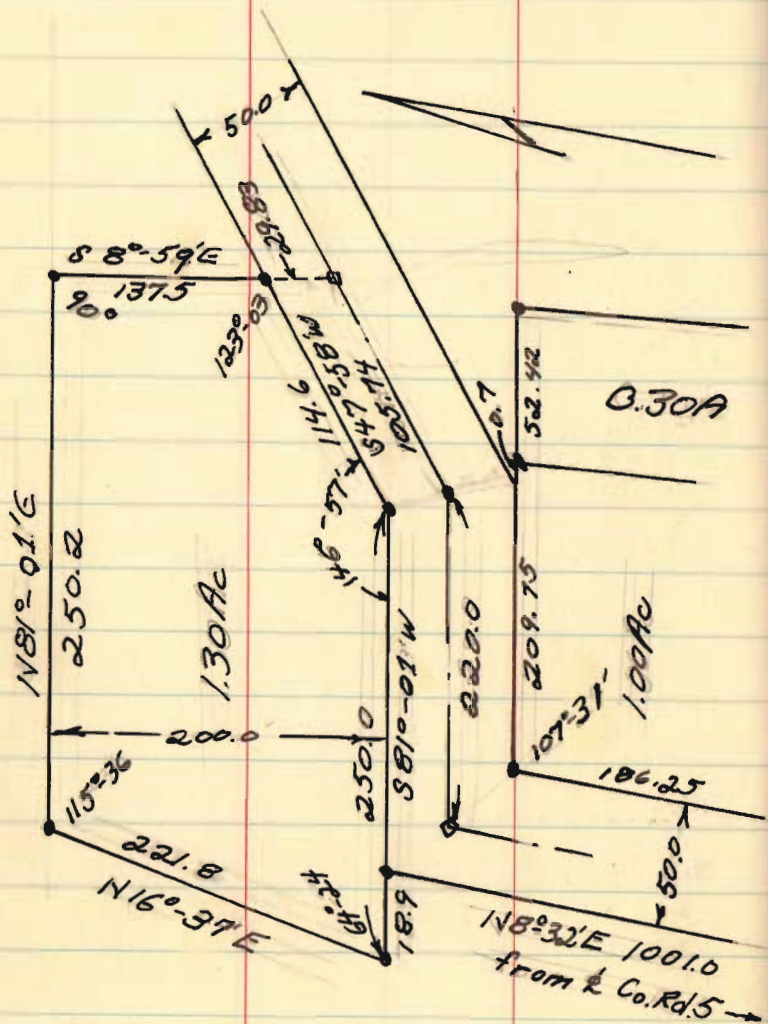
East line of
 Sec. 15

NE
 cor.

C. Sharp
 Sec. 29, Town 5, R-14
 Liberty Twp

April 18, 1970

56



See plat filed with desc.

3701

INDEXED ON MAP

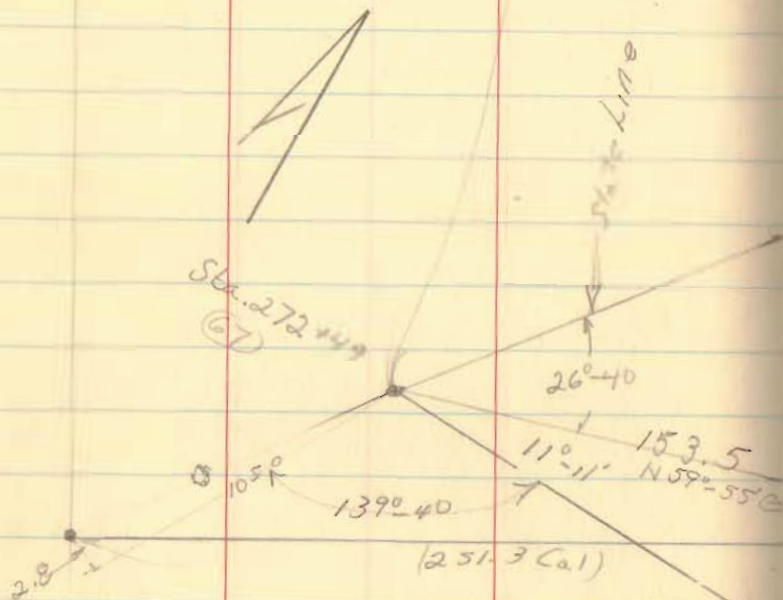
0175
 84
 700
 1400
 4700

137.5
 29.2
 107.3
 55.0
 1.3
 1975.2

Wonders Line
Sta 272+49



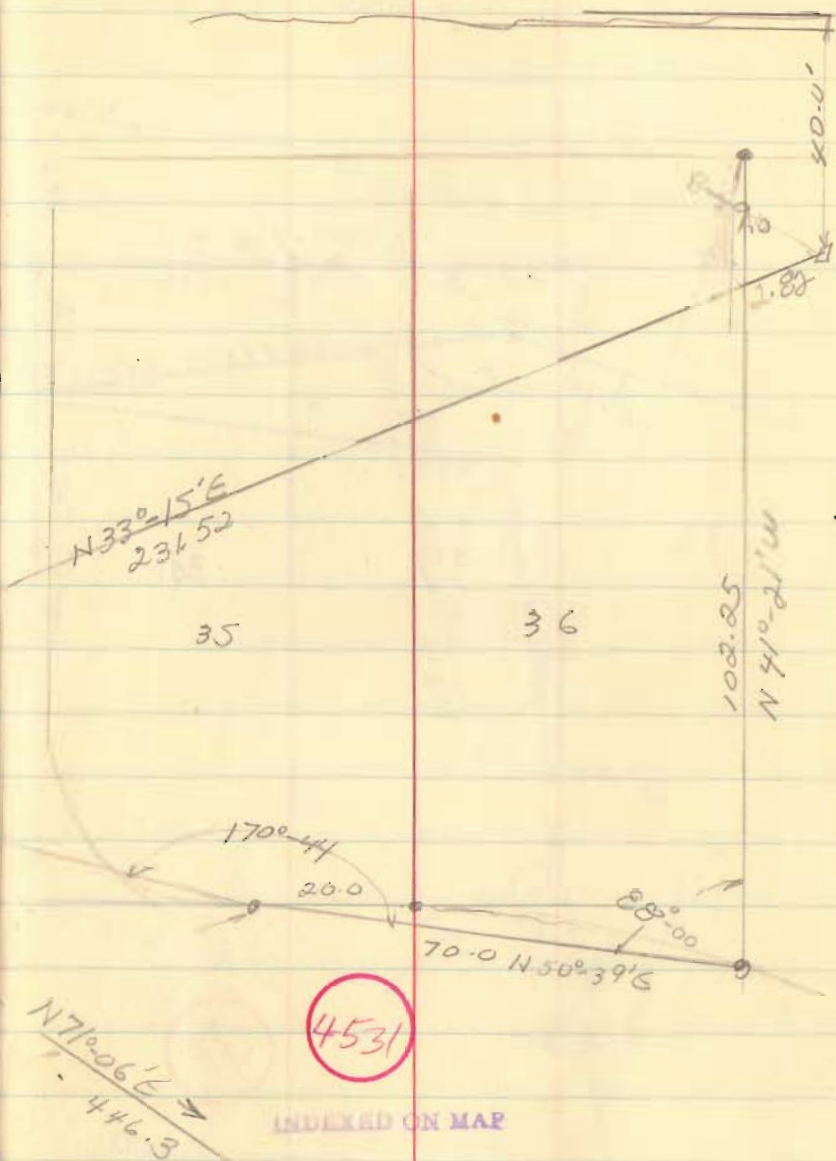
Park



Wonders
Base Line

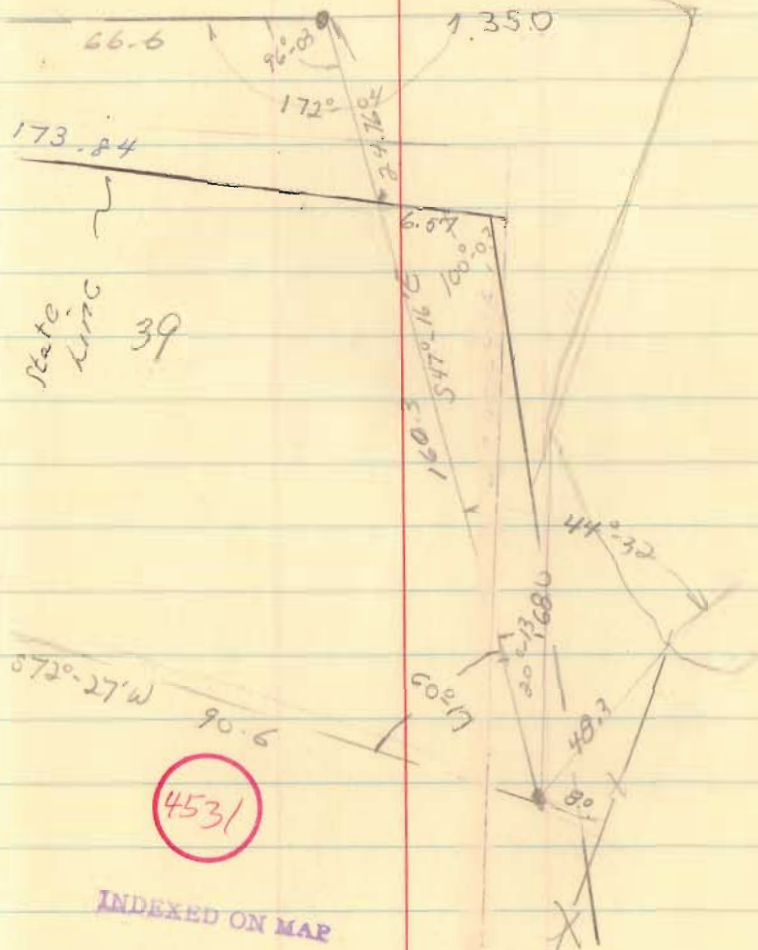
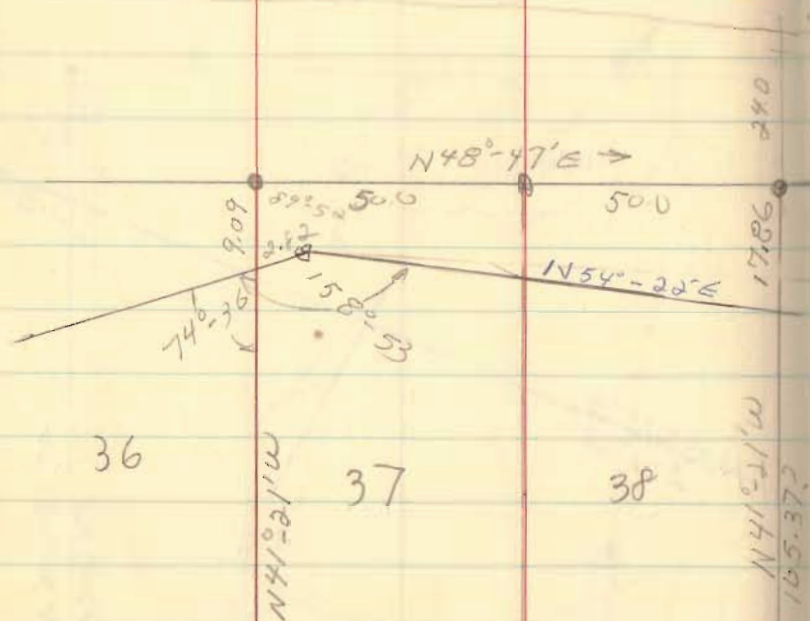
April, 70 & also 62°

59

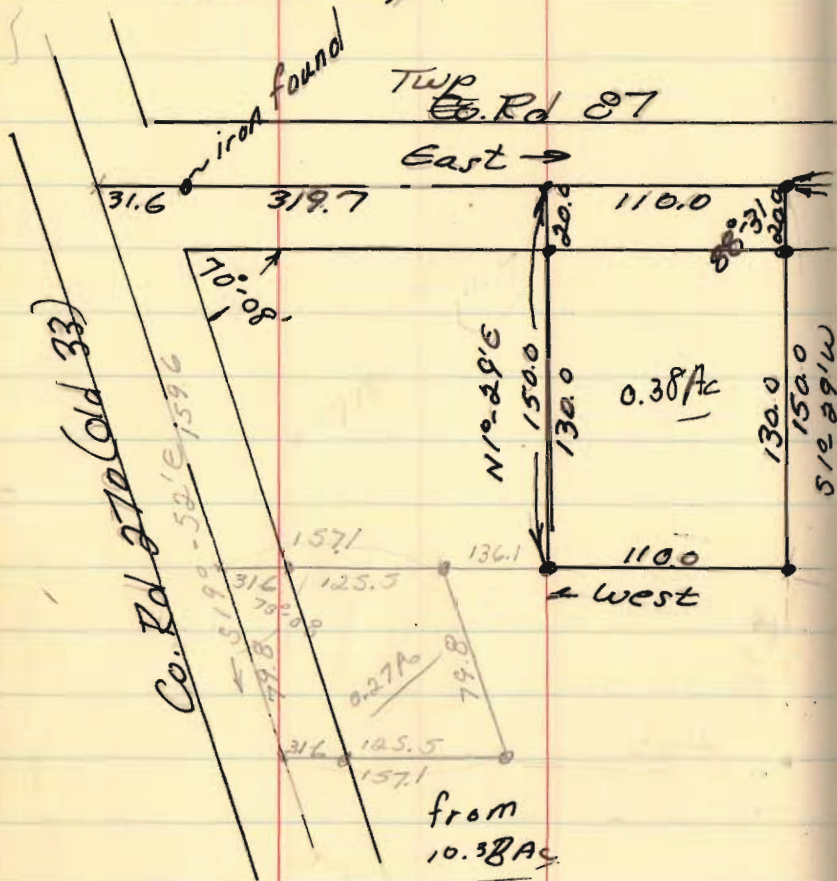


Wonder's Line
from pg 59

60



Ammers
 Sec. 27, T.6S; R.8E
 Stokes Twp

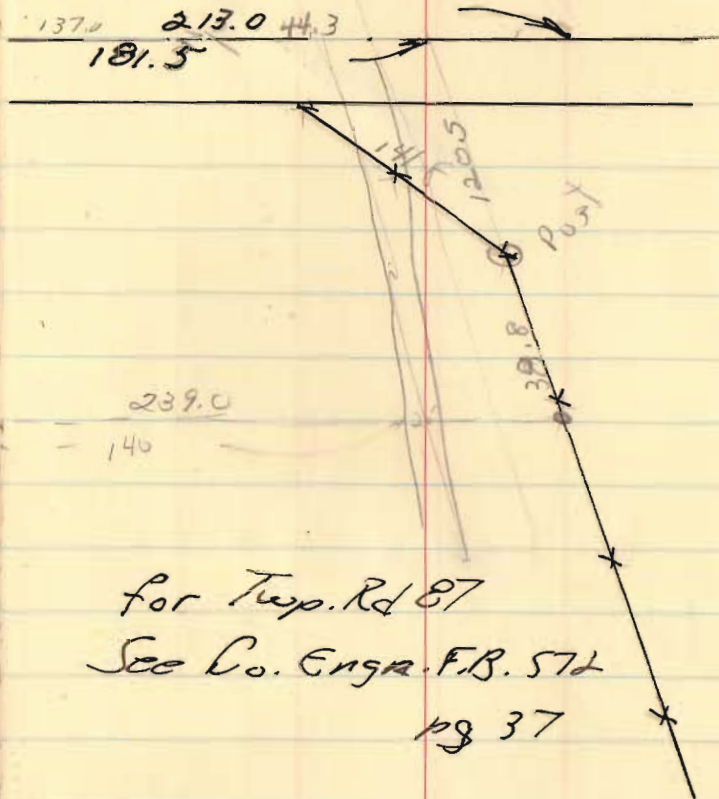


Box 431
 Lakeview, O

April 25, 1970

63

(Duff Rd.)



4699

INDEXED ON MAP

Byron McGowan
 Sec. 23, Twp 2, Range 8
 Bloomfield Twp.

May 9, 1970

65



See Co. Engr. F. B. Goly, pgs. 56 & 57

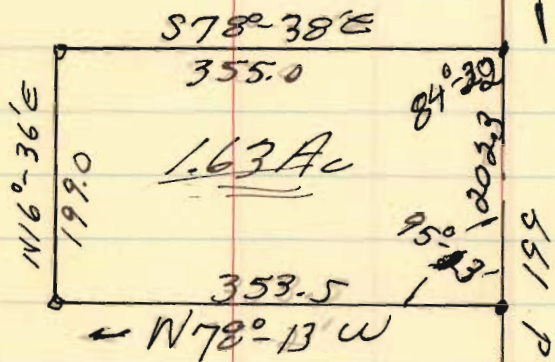
4675

INDEXED ON MAP

Styer Survey
V.M.S. 3692; Leesburg Twp
Union Twp

Co. Rd. 214

from
66.70 Ac tract

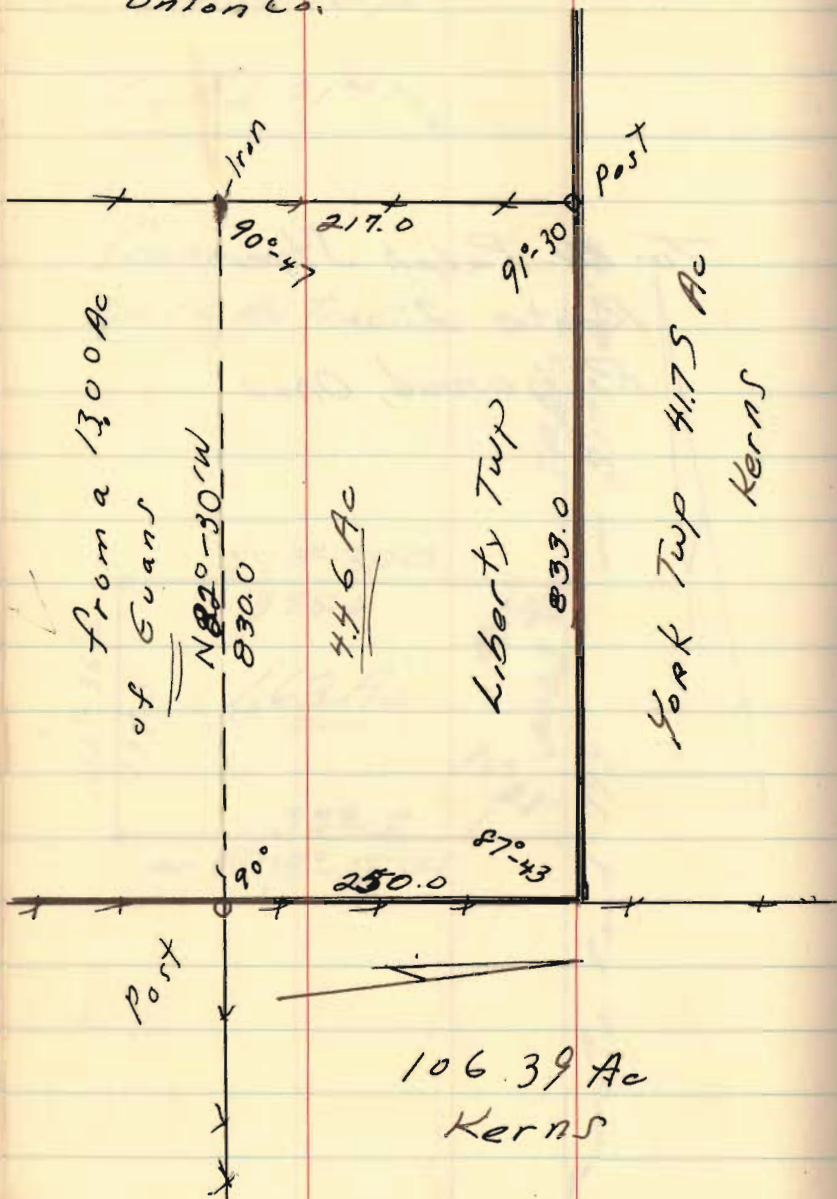


Aug 22, 1969

67

To: Mr. Ralph Styer
Route 2
Richwood, Ohio

L. Kerns Survey
 V.M.S. 16133, Liberty Twp.
 Union Co.

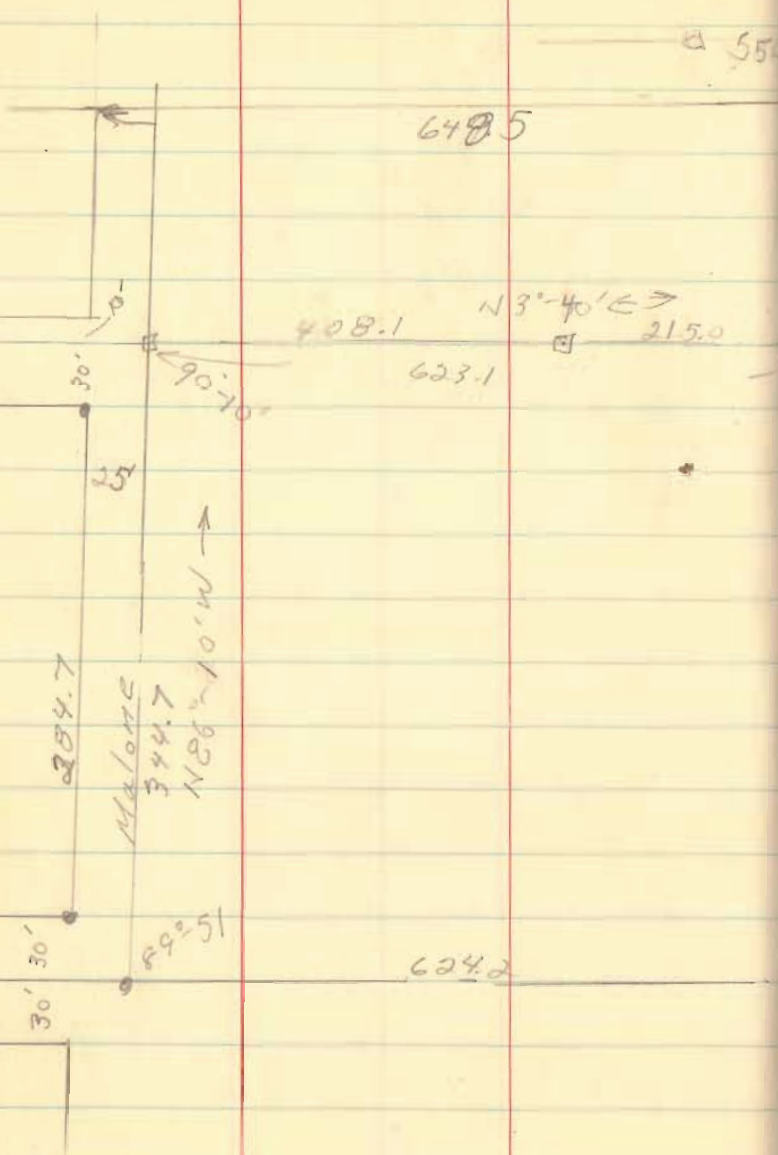


Aug 22, 69

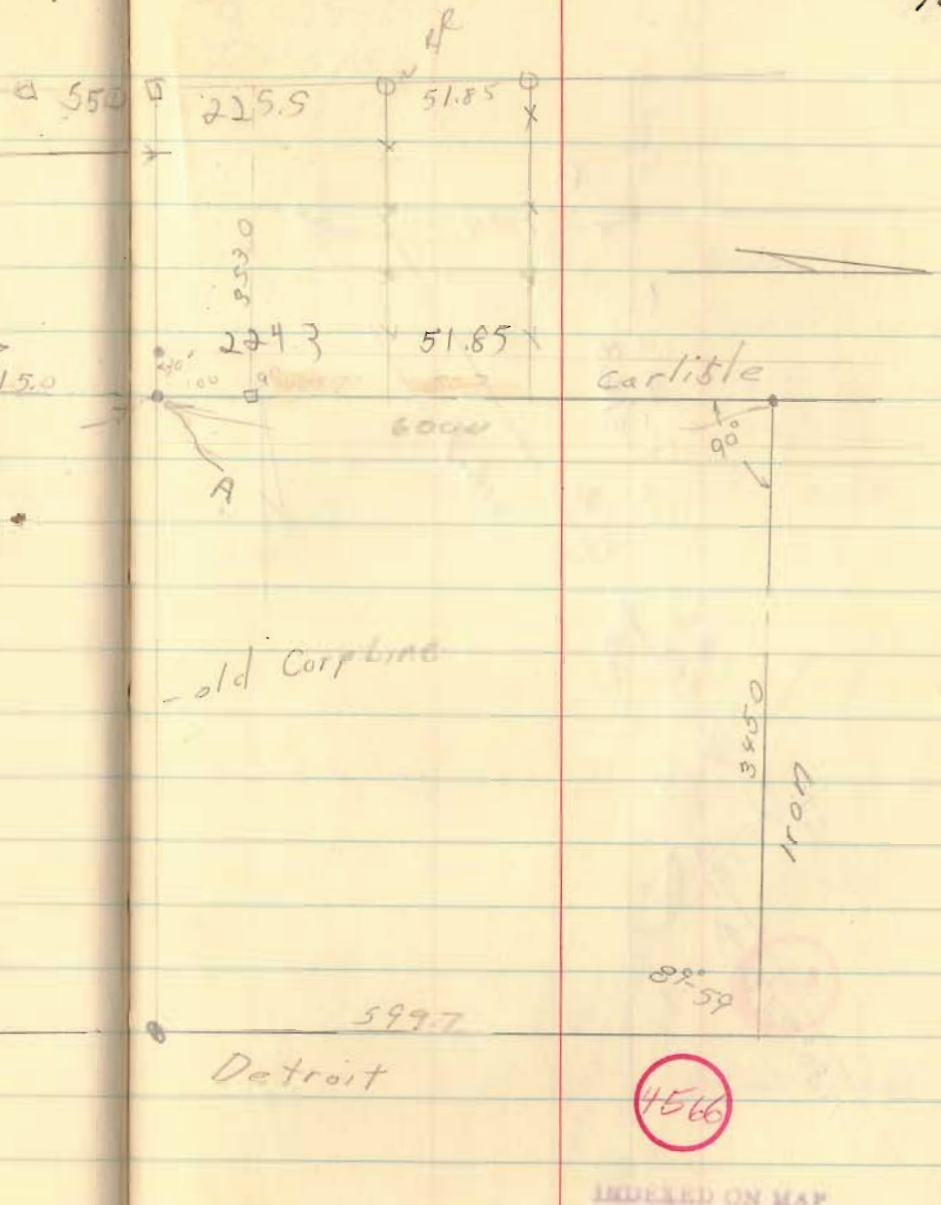
68

Mail To:
 Mr. Lloyd Kerns
 Route 1
 Raymond, Ohio
 Phone
 358-2398

98. for Carter Steel



70



INDEXED ON MAP



$\Delta = 29^{\circ}-20$
 $T_s = 575.0$
 $D_c = 3^{\circ}-1$
 L.T. 100
 $ST = 50$
 $L_s = 150$
 $y_c = 0.98$
 $\Theta_2 = 2^{\circ}-15$
 $\Delta_c = 24^{\circ}-50$

Richards on
 Circular curve
 $206.84'$
 $L = 6^{\circ}-12$
 $R = 1909.86$



4566

INDICATED ON MAP

