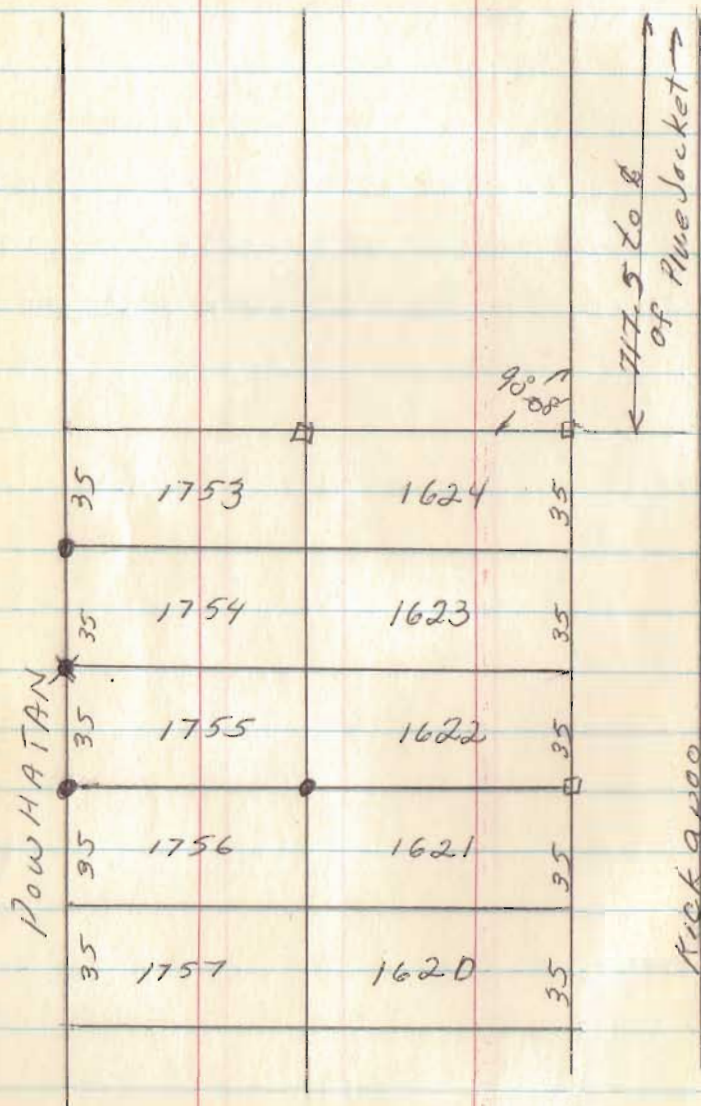


lot 1622-1623-1624
Chippawa Park 3



Nov. 14, 1970

1

- Irons found
- Irons placed

Mrs. Mary Tuttle
625 S. Cool Rd
R#5
Lima, Ohio 45801
Phone 223-8229

6556

INDEXED ON MAP

Lockwood Survey
 V.M.S. 4570
 ZANE Twp

Nov. 21, 1970

3

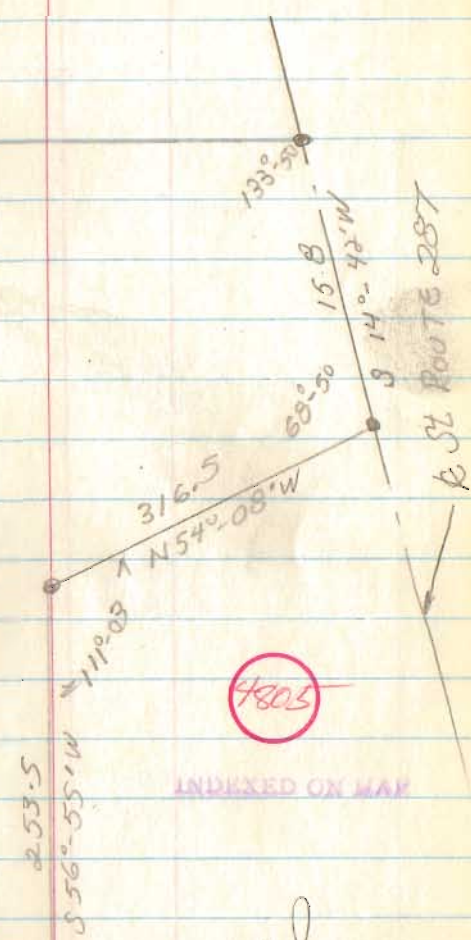
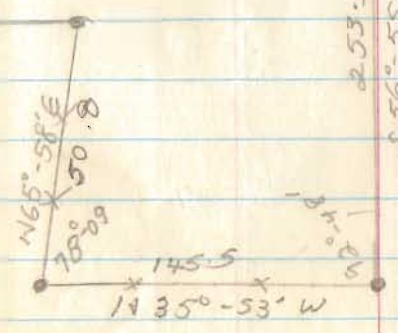
East line of V.M.S. 4570



9.50 A

N 59°-36' E
 363.0

958.5
 N 32°-11' W

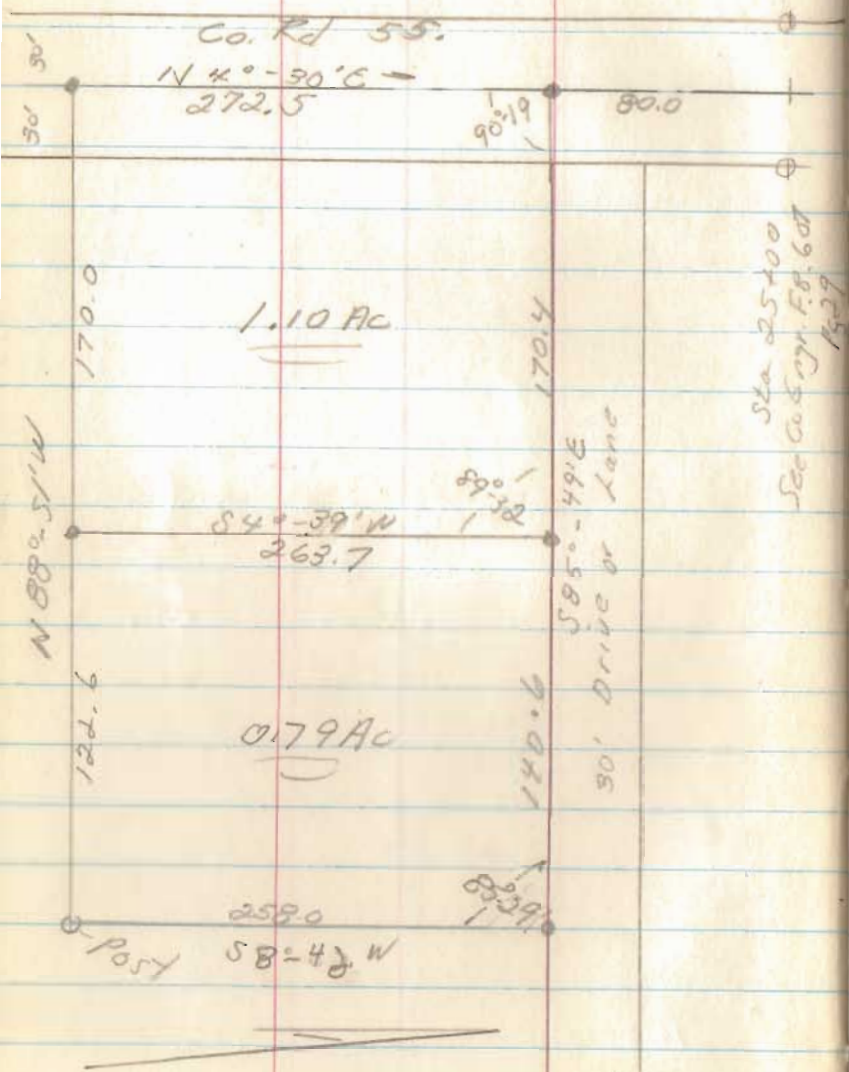


Sited

Godwin Survey
 U.M.S. 6449
 Jefferson Twp

Nov 24, 1970

5



4767

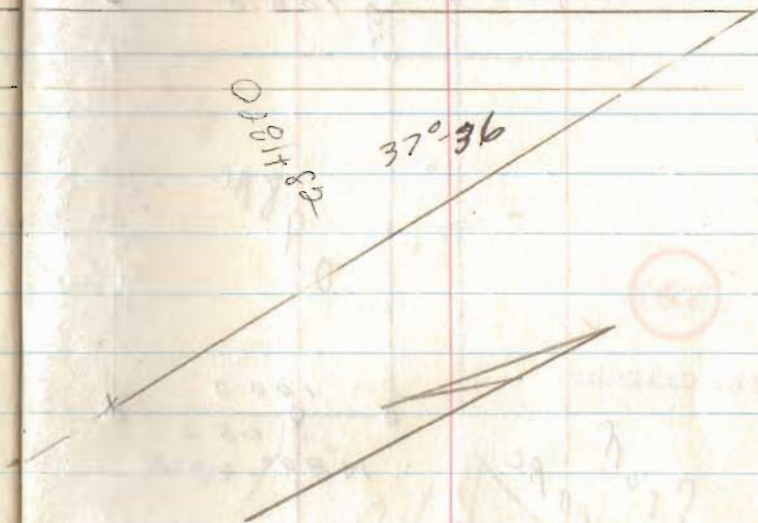
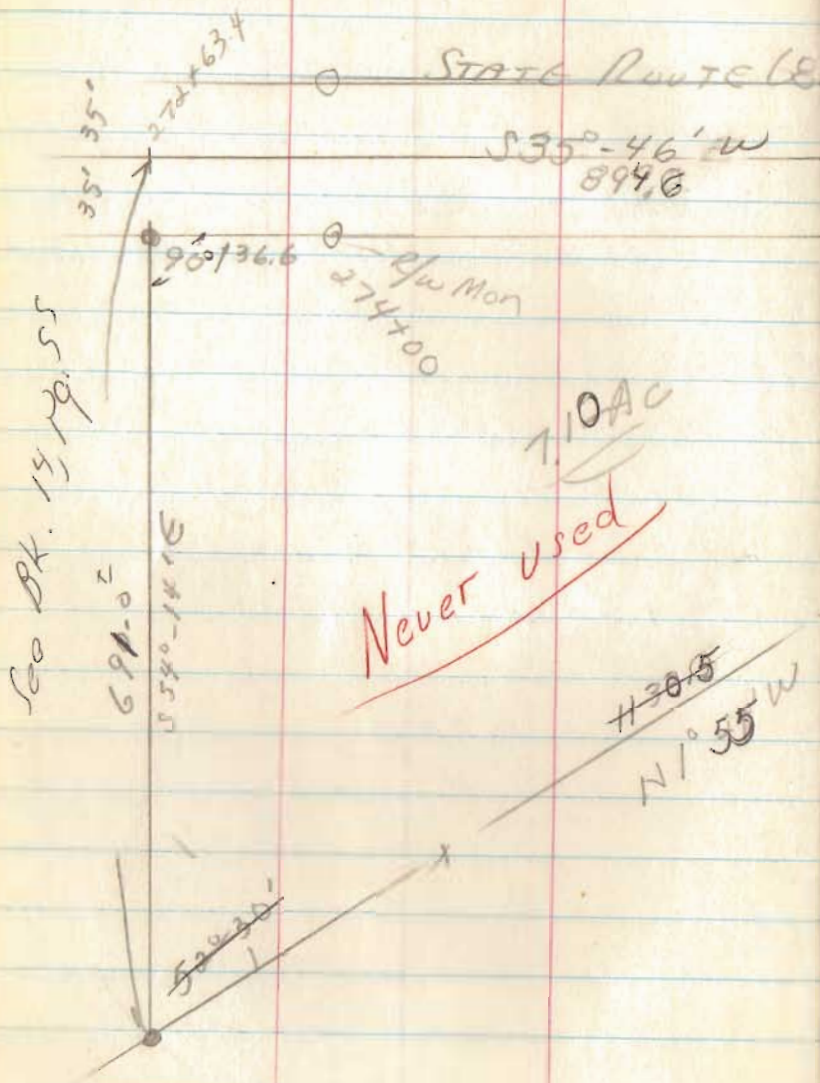
INDEXED ON MAP

filed

Payne to Coons
 V.M.S. 9933
 Rushcreek Twp

Dec 5, 70

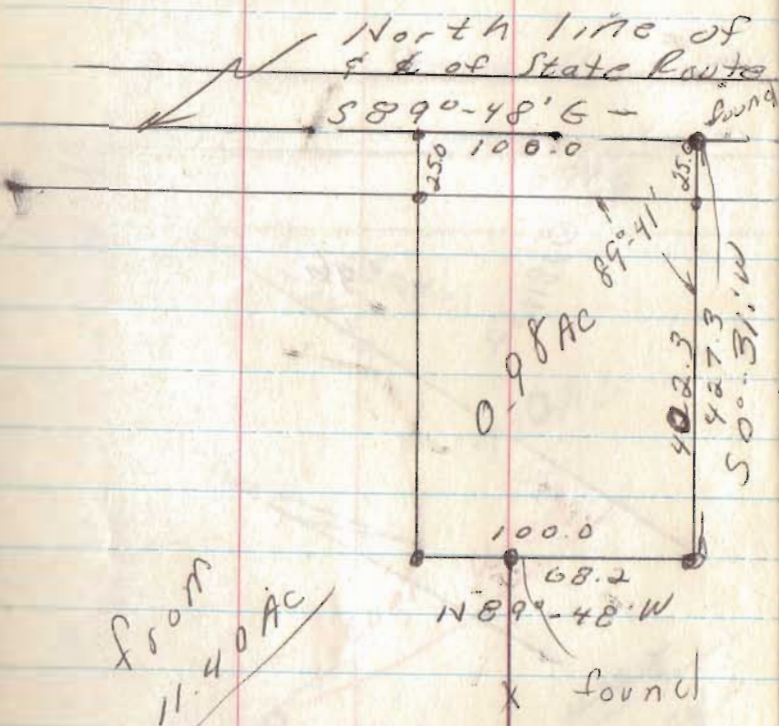
7



~~filed~~

INDEXED ON MAR

Norvil to Reed
 Sec. 14; T-7; R-8
 Washington Twp.



Sec 14.
 274

784.1

North east
 corner to
 sec. 14

4800

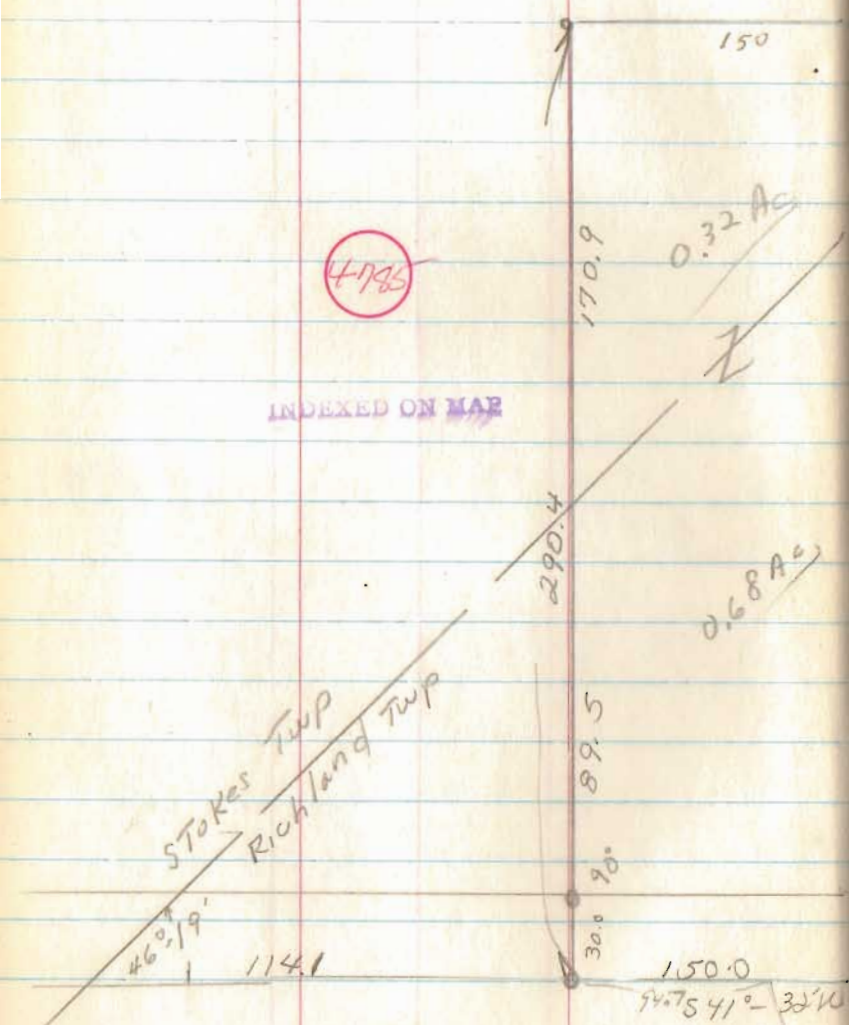
INDEXED ON MAP

Filed

Newland to Braumiller
 Richland & Stokes Twp.
 V.M.S. 12277

4196

INDEXED ON MAP

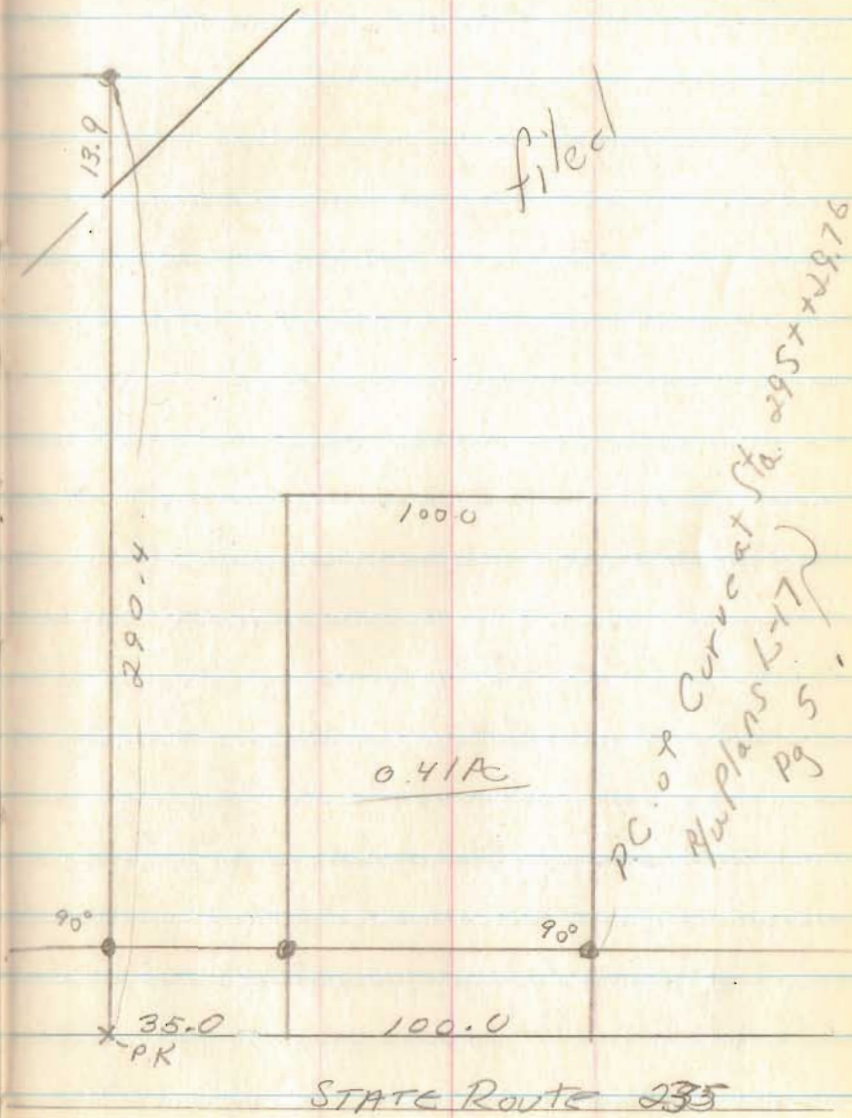


Dec 13, 70

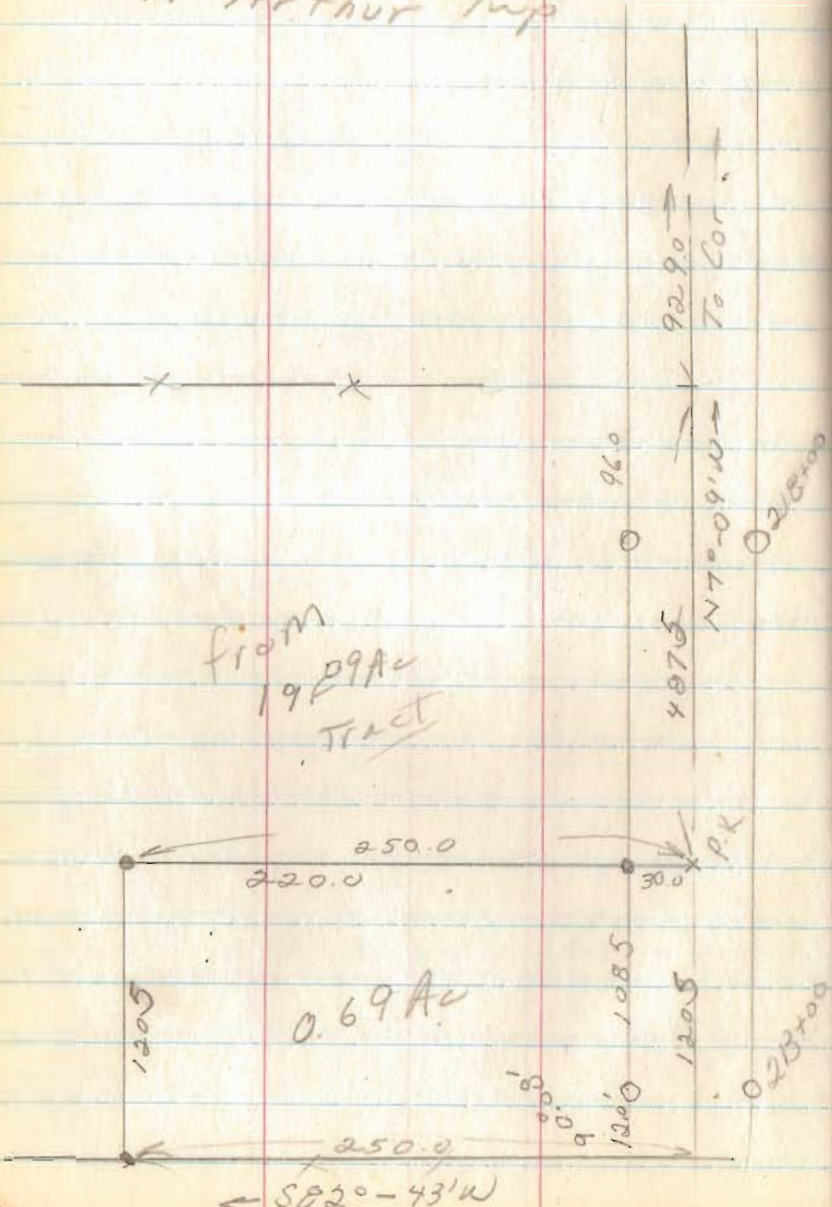
Pete Braumiller
 12216 Cordova D
 Medway, Ohio

10

filed



Anderson Survey
 U.M.S. 9881
 McArthur Twp



from
 1929 Ac
 Tract

Dec 12, 70

12

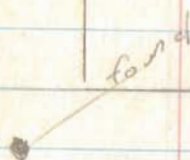
4774

INDEXED ON MAP

See Rk 61pg 40

filed

Bob Rusty
CHIPPAWA PARK



P.K. x

ONEIDA 35.0

IOWA 35.0

util. pole
740
350 19
350 19
350 19
740

12-12-70

14

BLUE JACKET 35'

R.R.S. placed

740
72 1933
73 1932
74 1931
740

350
350
350
350

SHAWNEE 35'



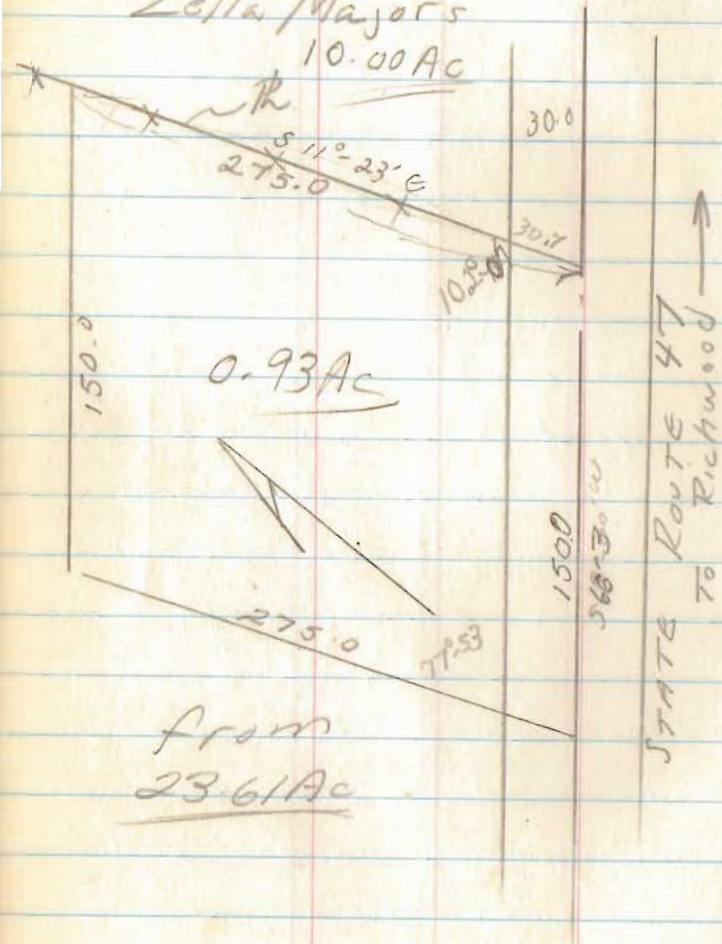
filed

6559

INDEXED ON MAP

FRIG To COONS
 Claibourne Twp.
 Union Co. - V.M.S. 58.09

Zella Major's
 10.00 Ac



Dec., 1970

16

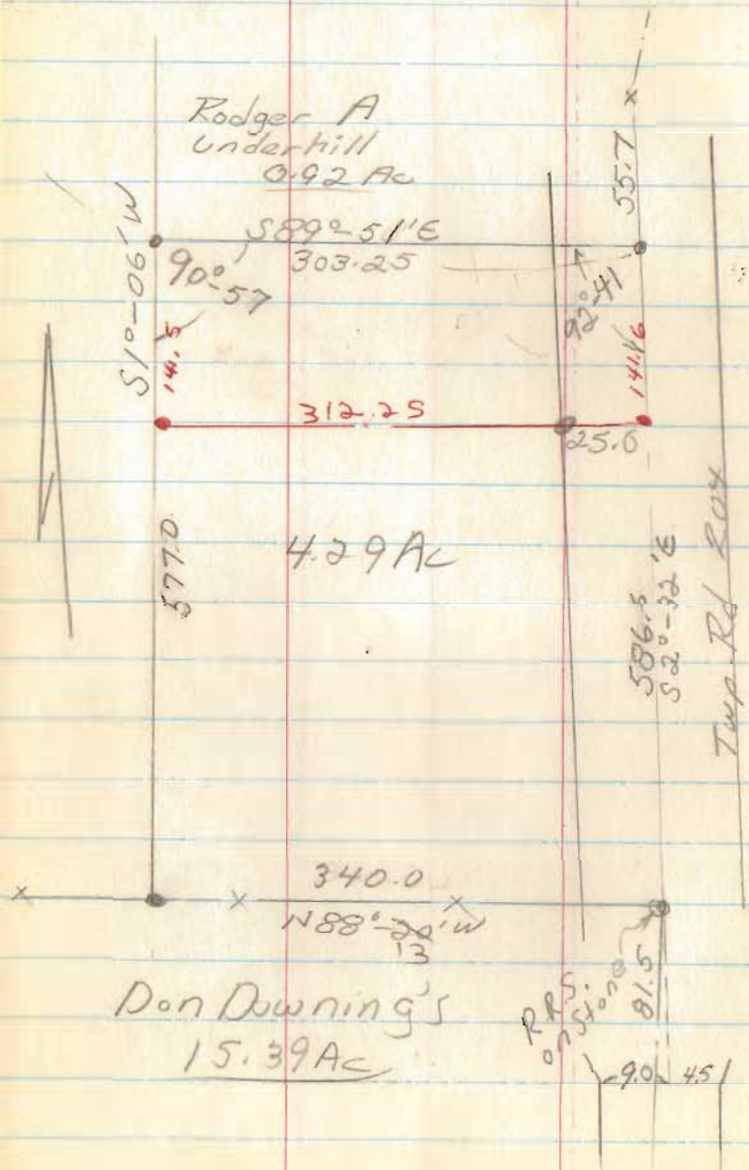
Get bearing & Angles

filed

1.023
 30
 30.690

75.0
 30.7
 44.3

DyTom to Underhill
 Sec 9, T-3, R-14
 Harrison Twp



Jan 9, 1971

18

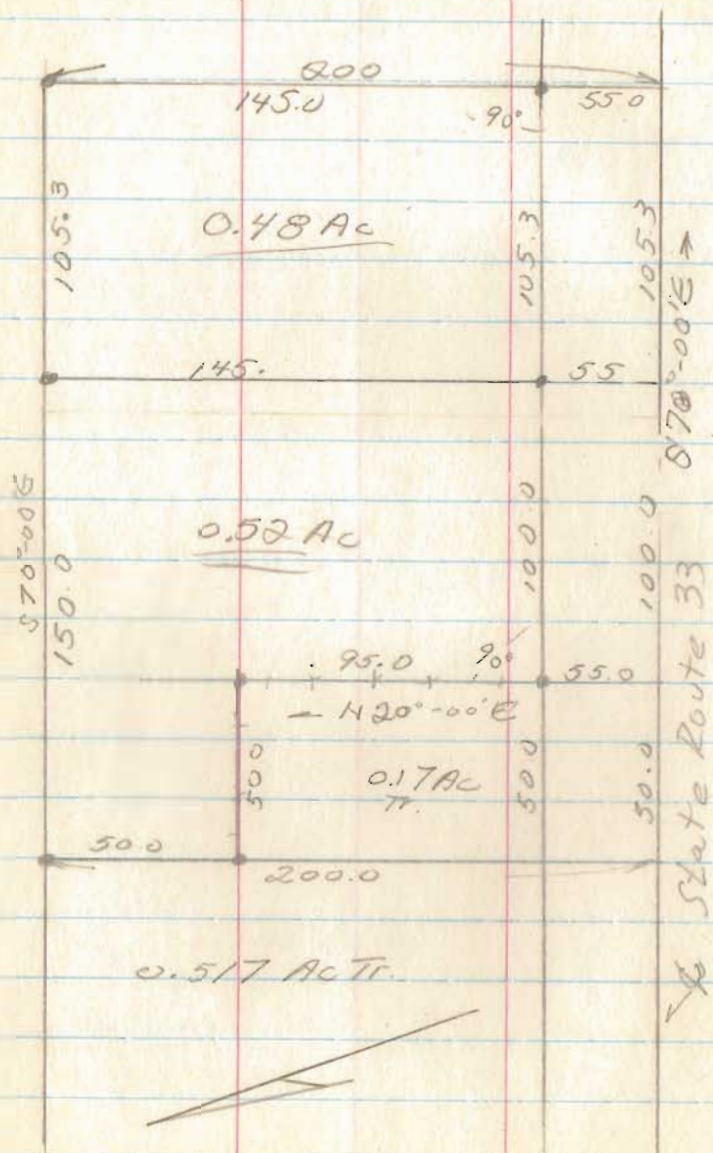
from a 29.56 Ac Tract

filed

4765

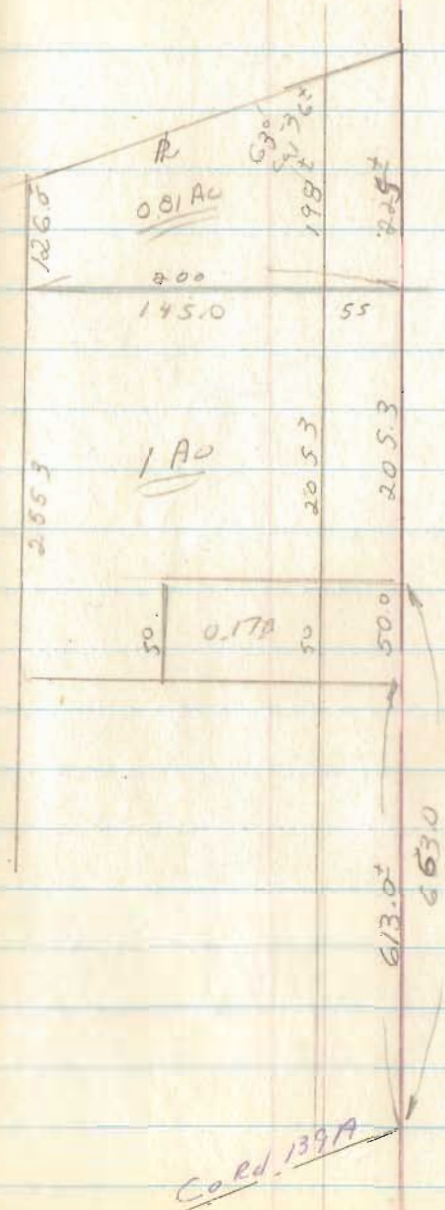
INDEXED ON MAP

Cross to Coors
 U.M.S. 5728
 Paris Twp, Union Co



Feb. 6, 71

20



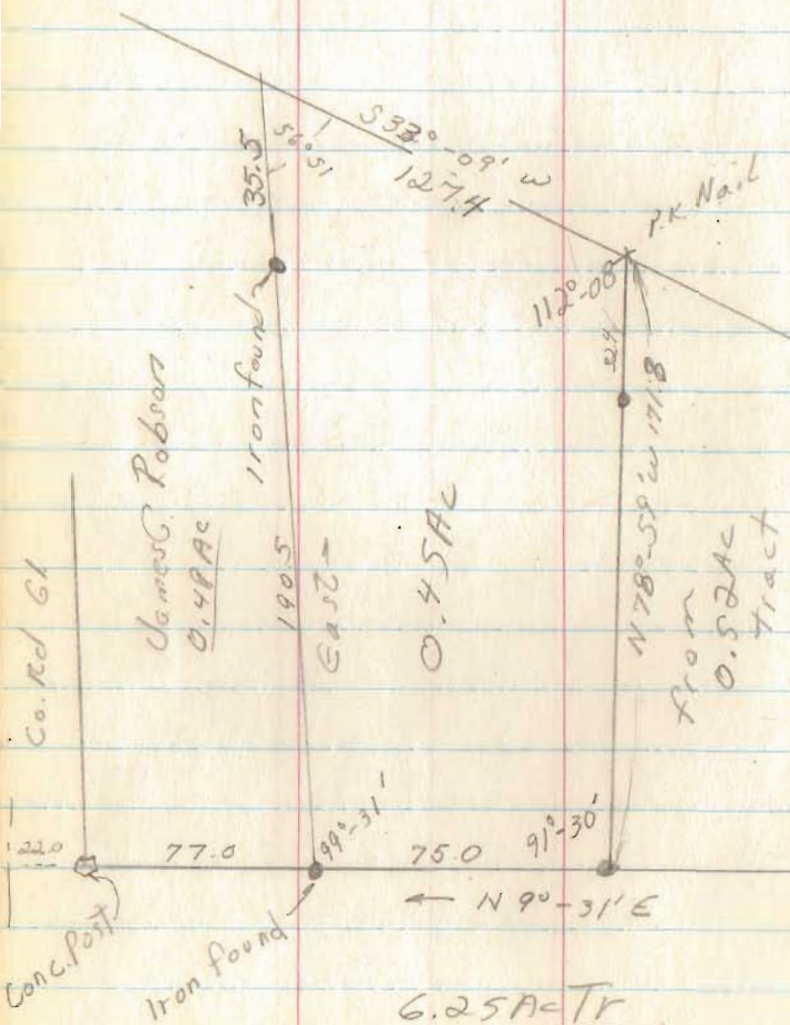
filed

Co. Rd. 1397A

Robson Survey
 Lewis Town
 Sec 24, T7S. R8E
 Washington Twp

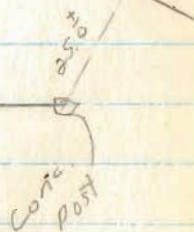
Feb 20, 71

22



Filed
 6191

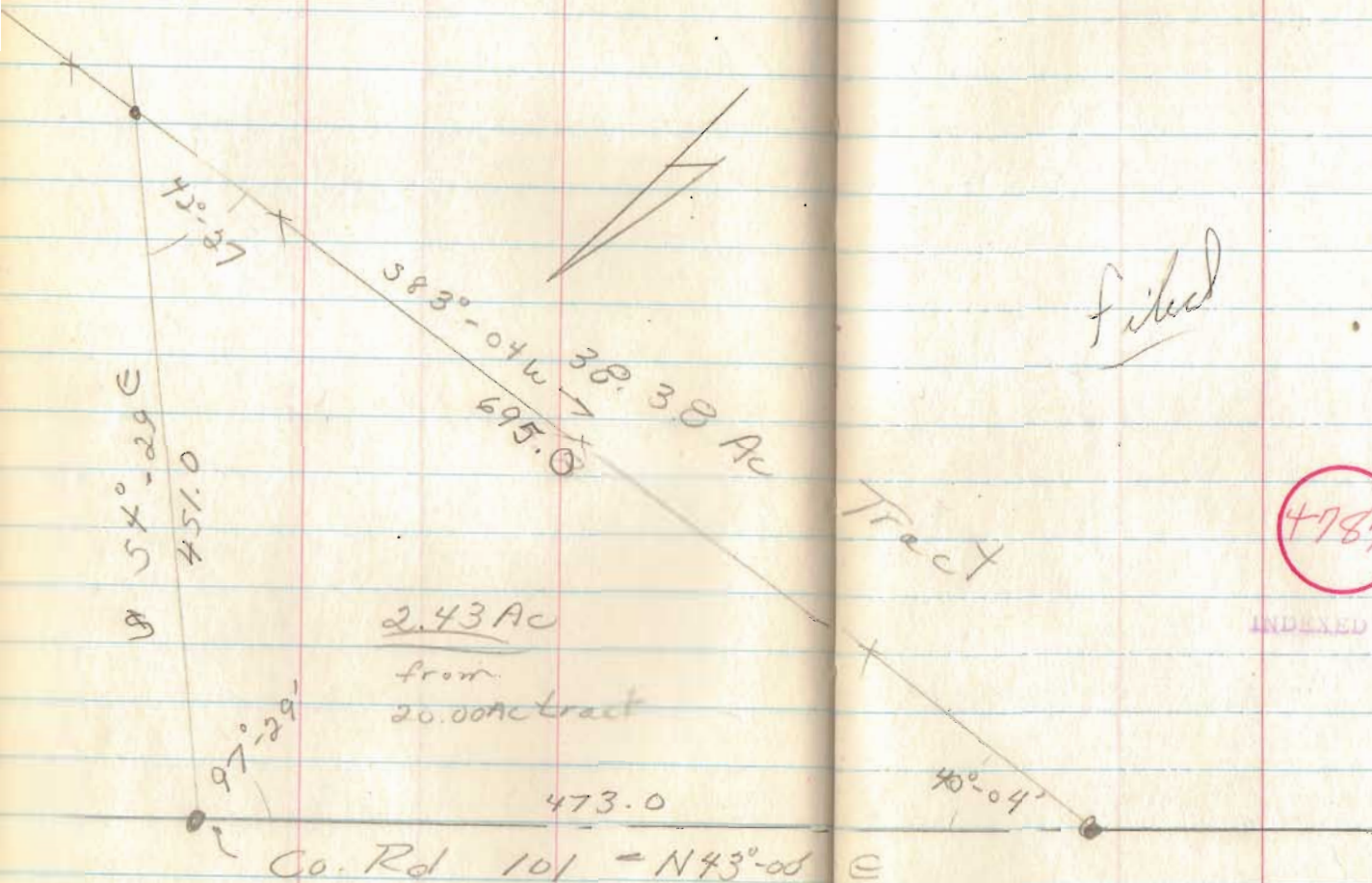
INDEXED ON MAP



Carver to Crapnell
Richland Twp
U.M.S. 9952

Feb. 20, 71

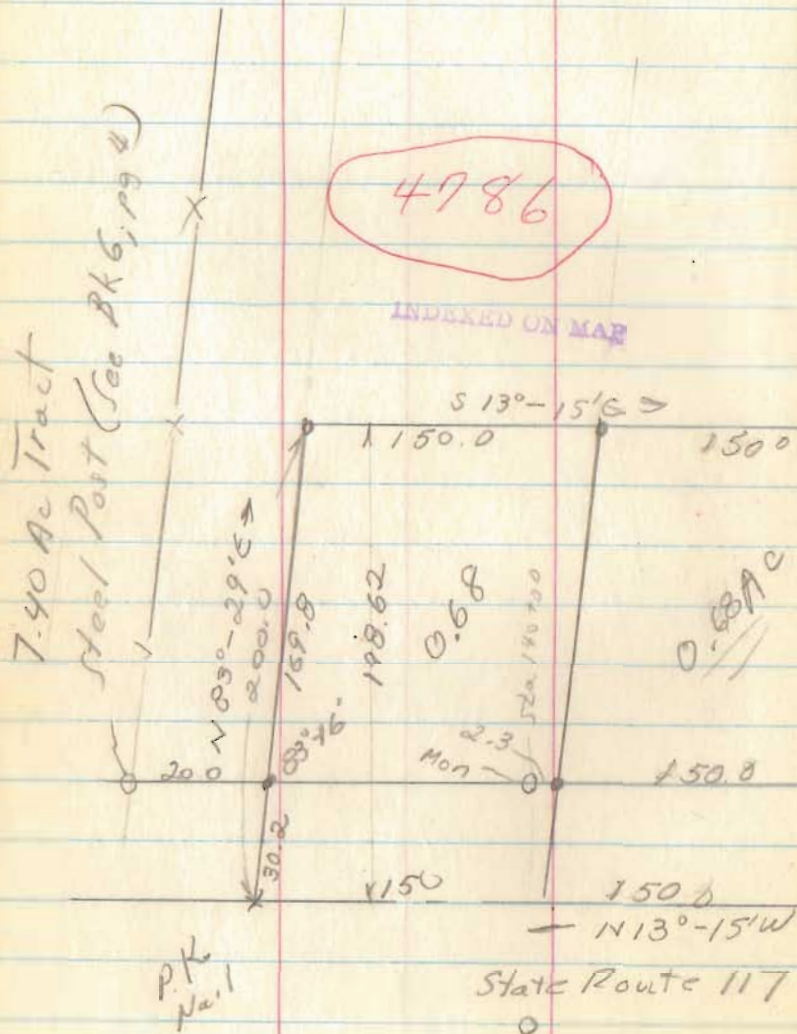
24



Don Miracle Survey
 Richland Twp.
 Logan County, O
 V.M.S. 10503

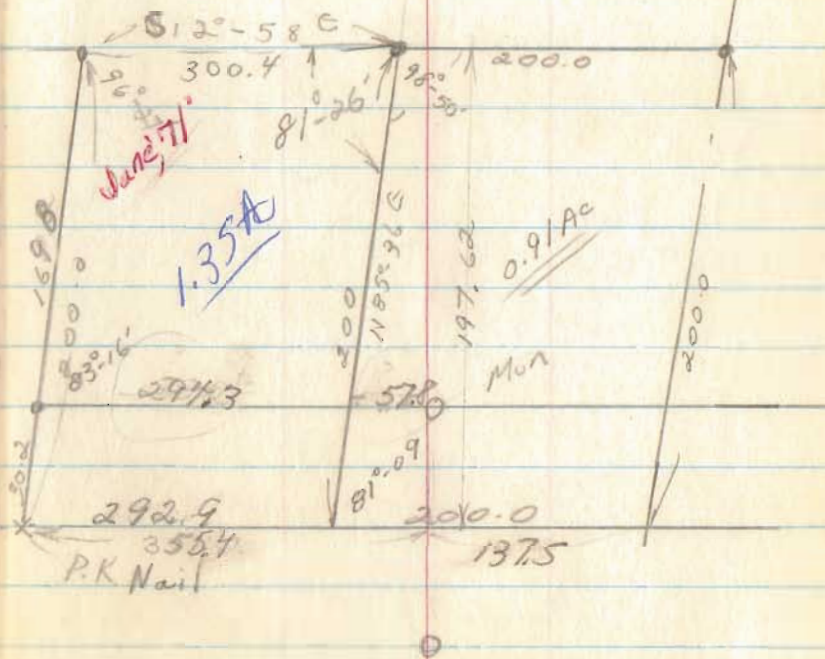
Feb, 29, 1971

26

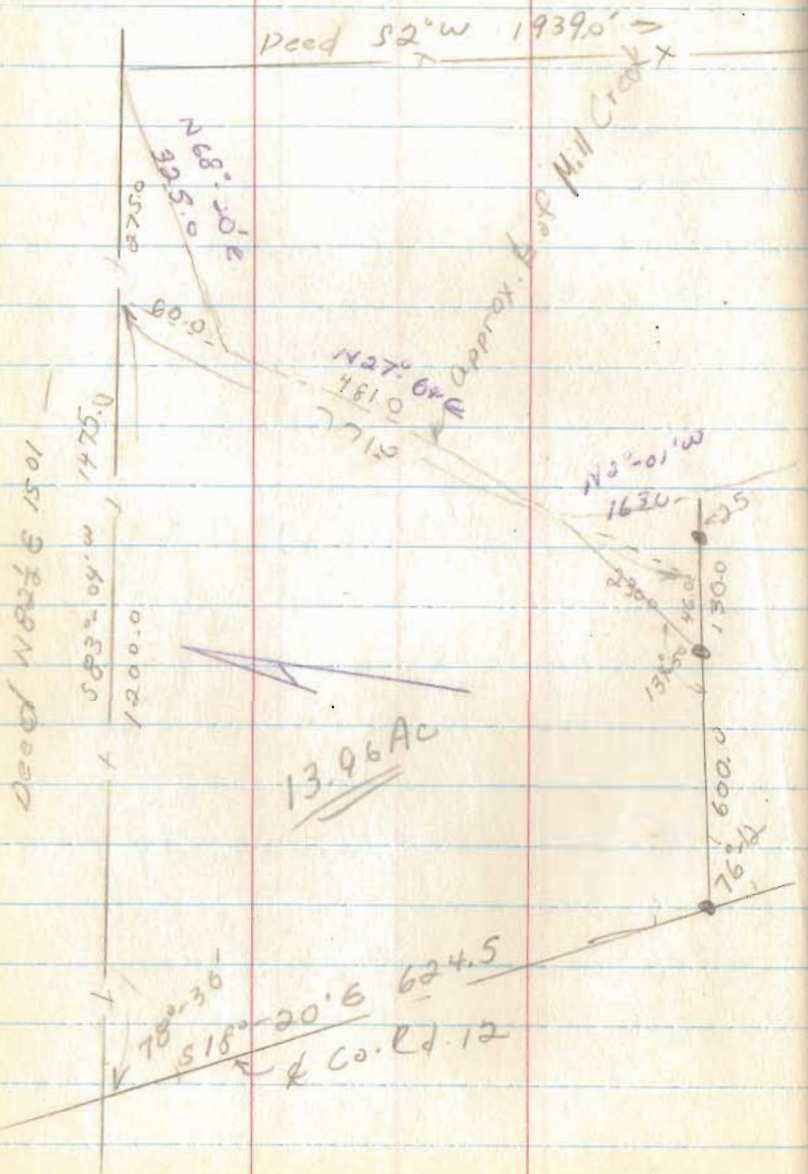


13.09 Ac Tract

filed



Coons Survey
V.M.S. 3472,
Rushcreek Twp.



Feb. 24, 71

28

from
50.47 AC

filed

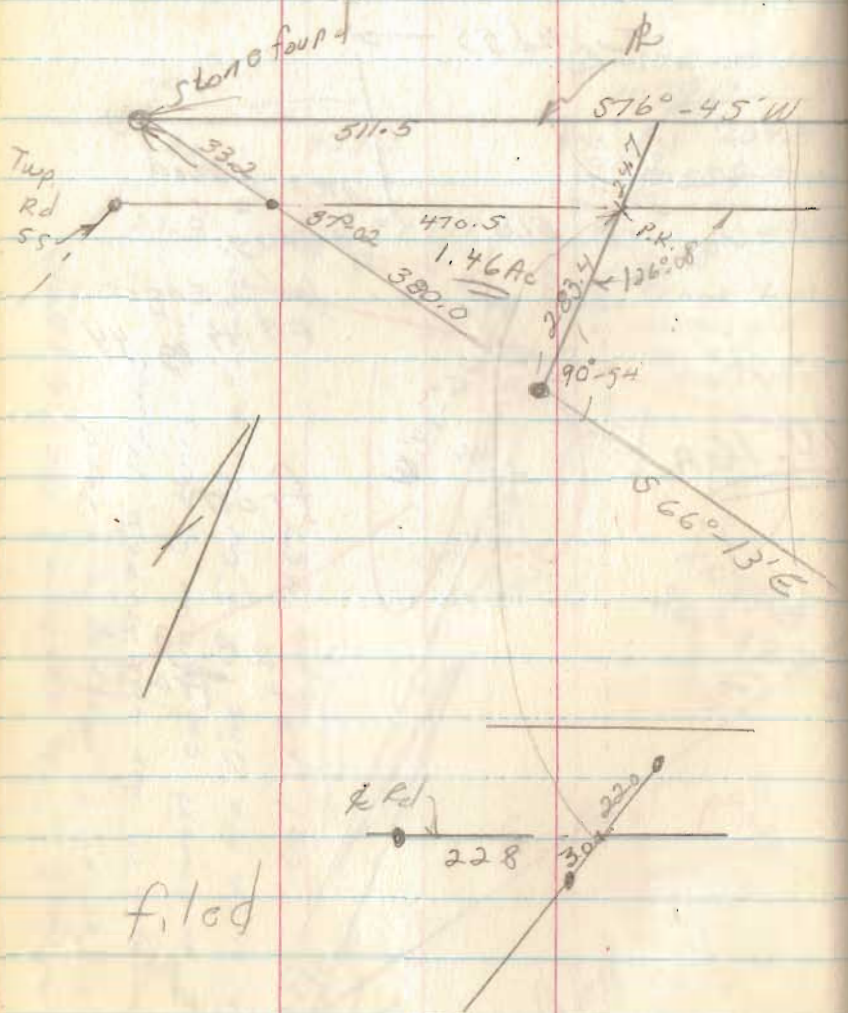
See Bk. 14, pg 56

1308.0' to # 56 Rt. 77 →

4737

INDEXED ON MAP

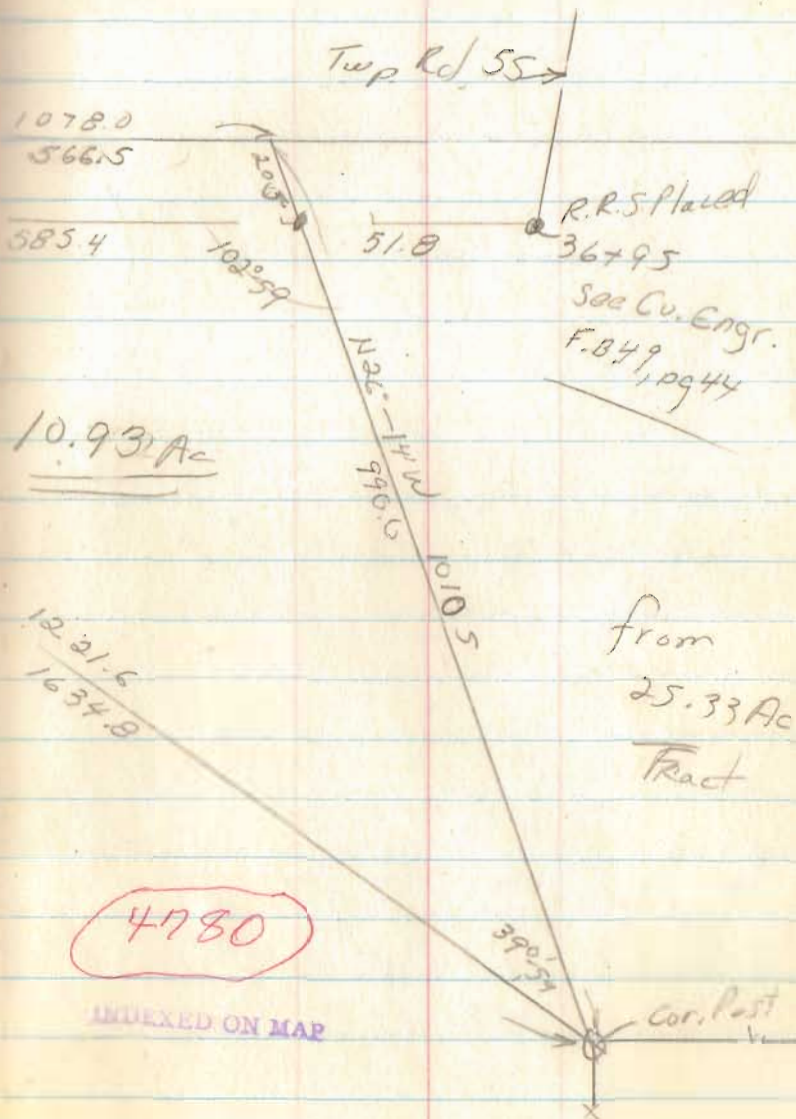
Alexander to Ropp
 V.M.S 6762
 Monroe Twp



filed

Feb 27, 71
 Mar. 16, 71

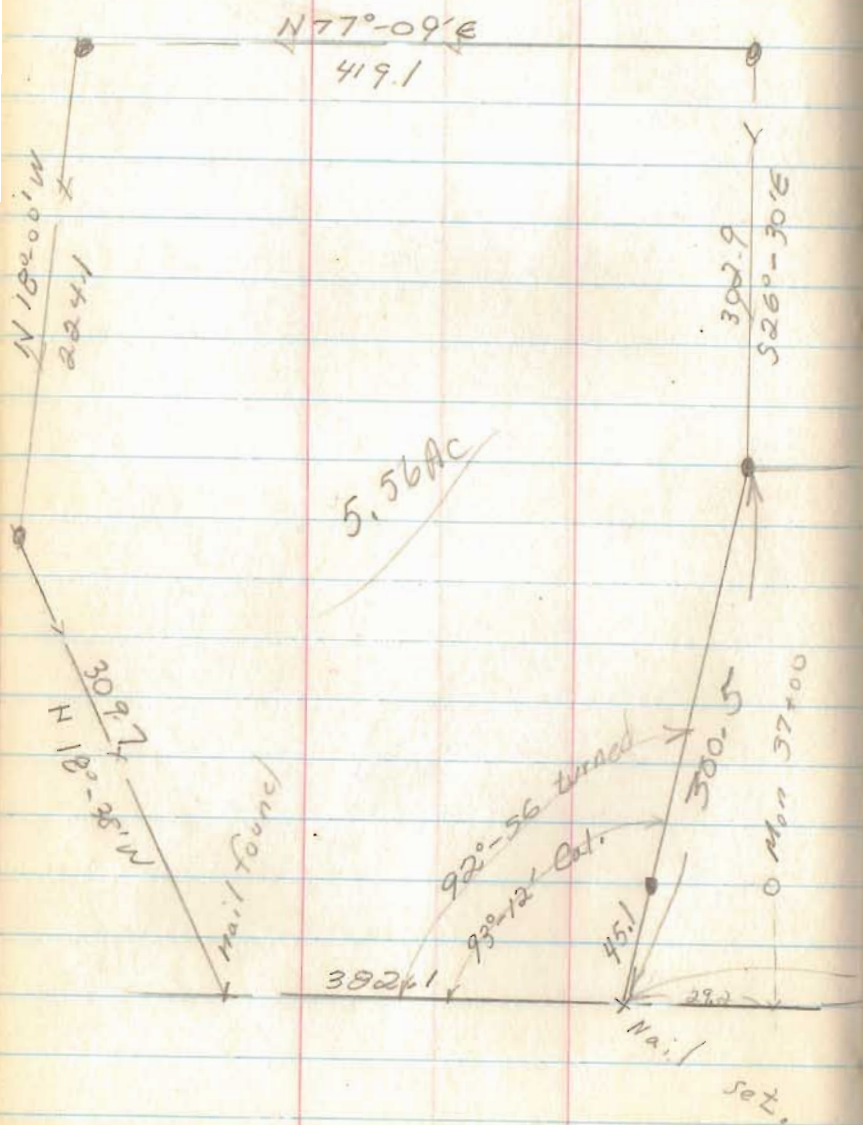
31



C. Furer

Rushcreek Twp

V.M.S. 3314



3-20-71

33

filed

4792

INDEXED ON MAP

N 85°-45' E
1158.6

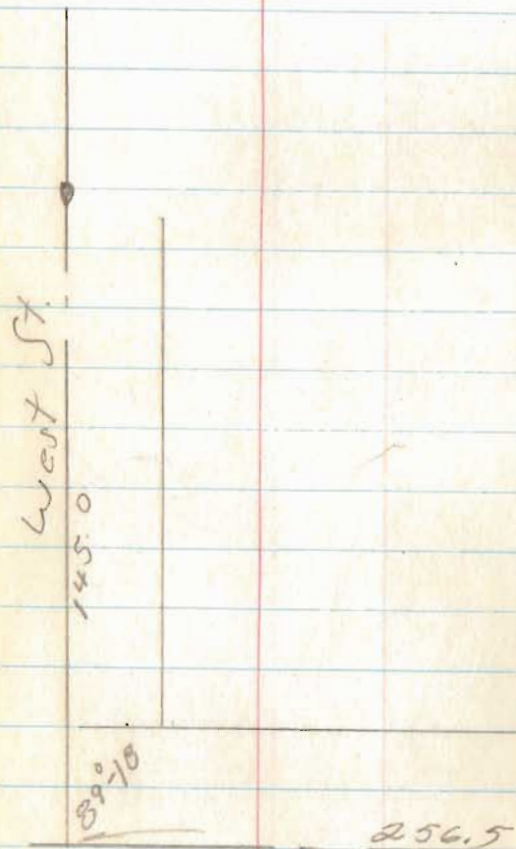
7.41 AC

996.1

St. Route 47

349.5
S 26°-37' W

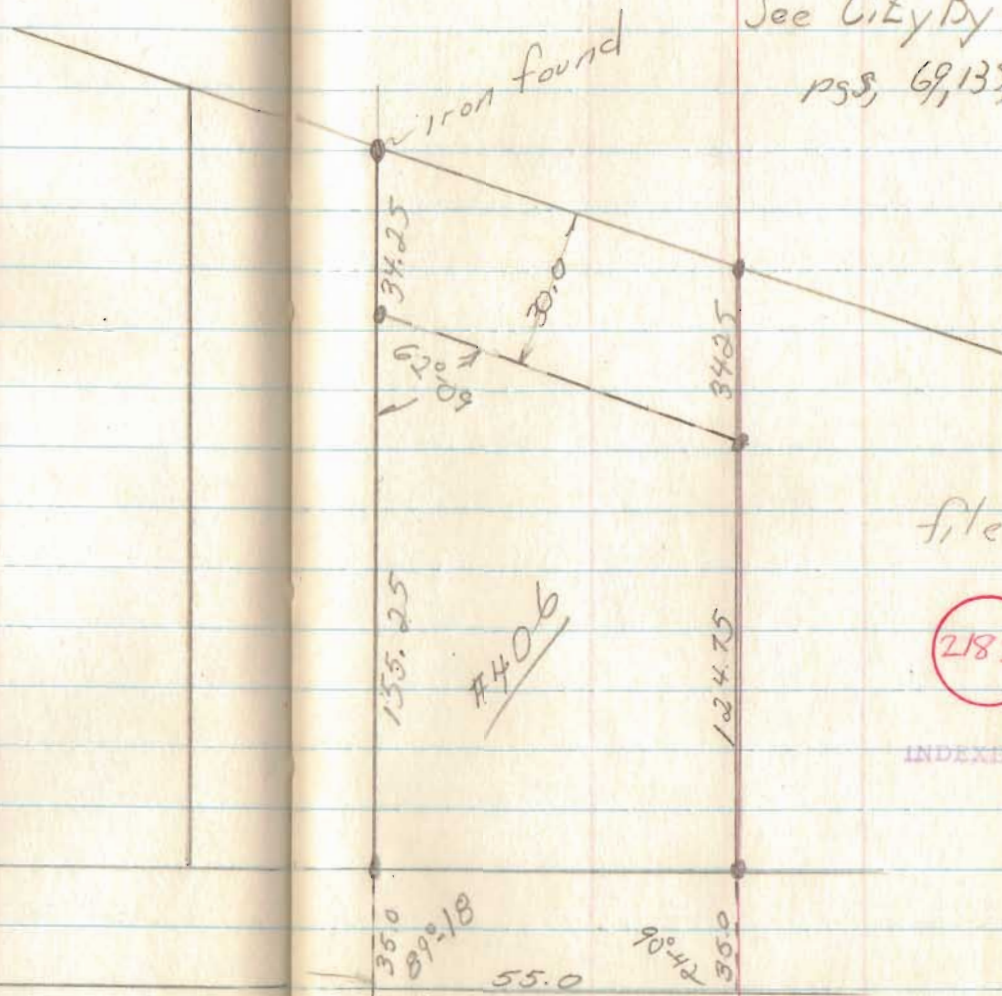
Mr. Roy Storman
628 W. Sandusky
592-4427
Lot 406



3-20-71

35

See City By 226
pss, 69,135, \$141

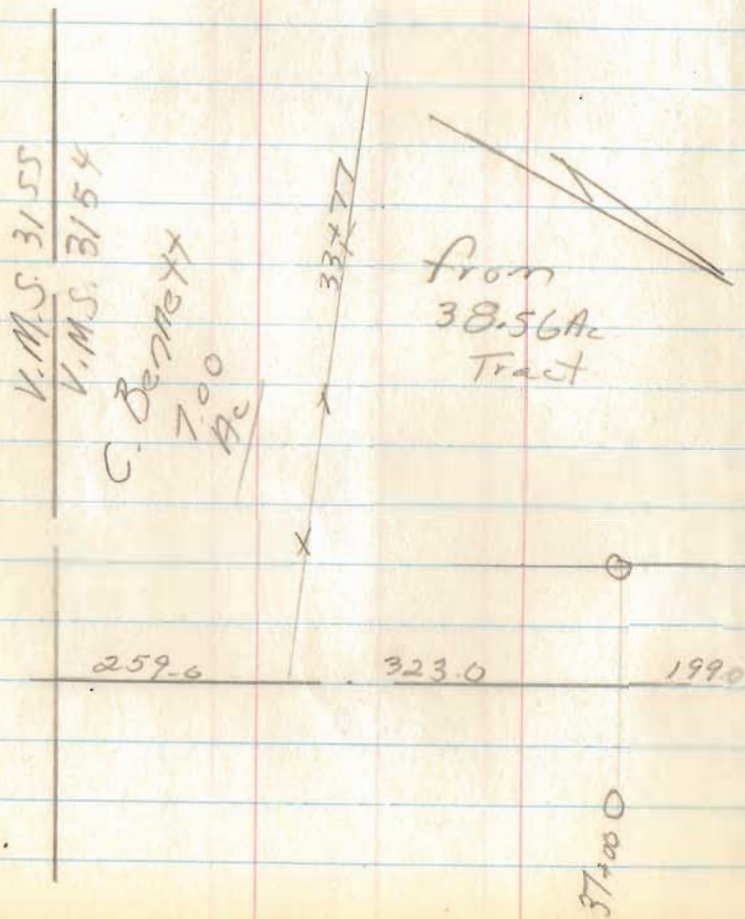


filed

2183

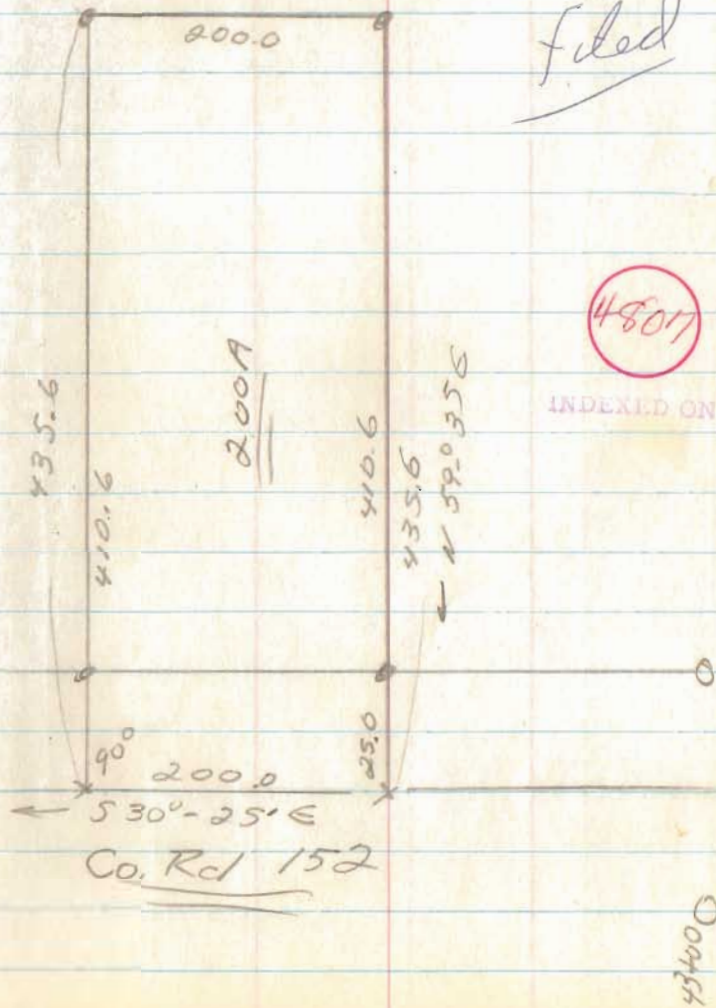
INDEXED ON MAP

Dear durff
 Zanc Twp
 V.M.S. 3154



3-20-76
 (now)

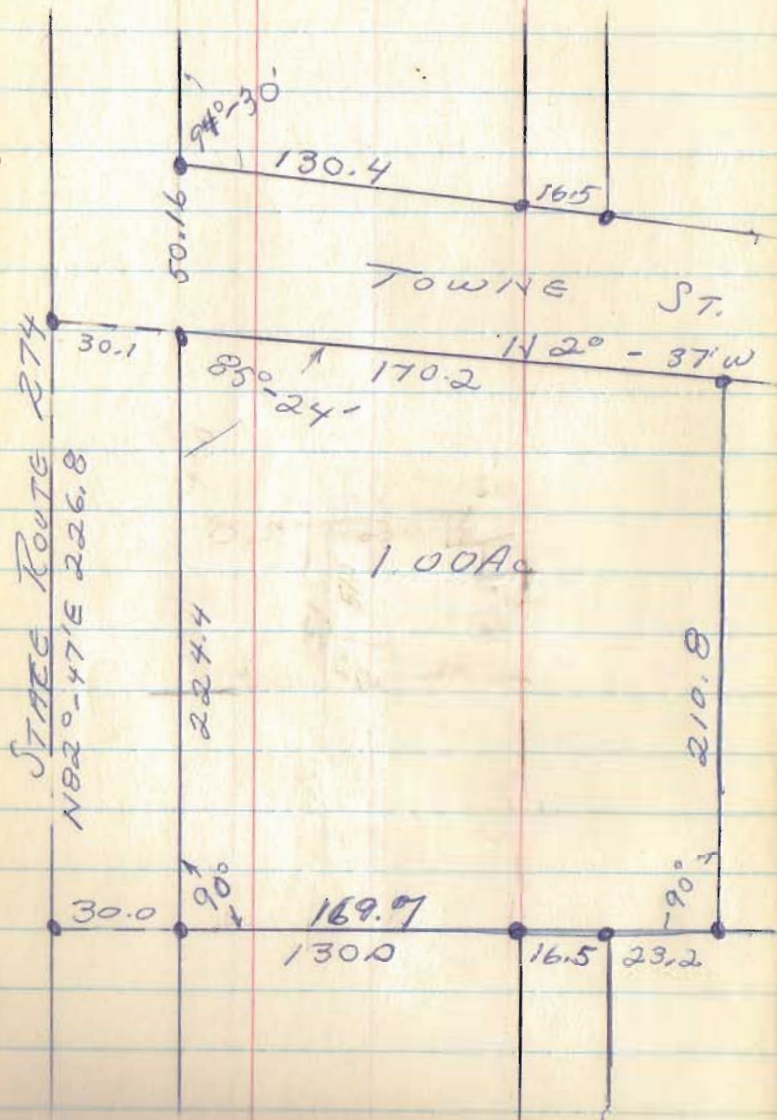
37



Filed

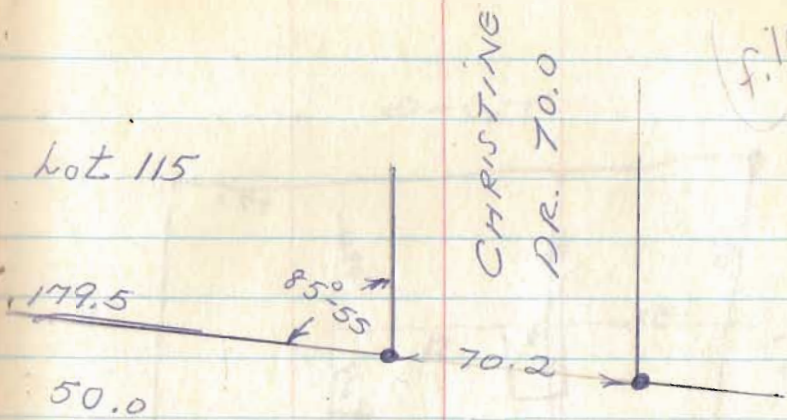
S. Peter's

Huntsville, O
Mc Arthur Twp
V.M.S. 9904

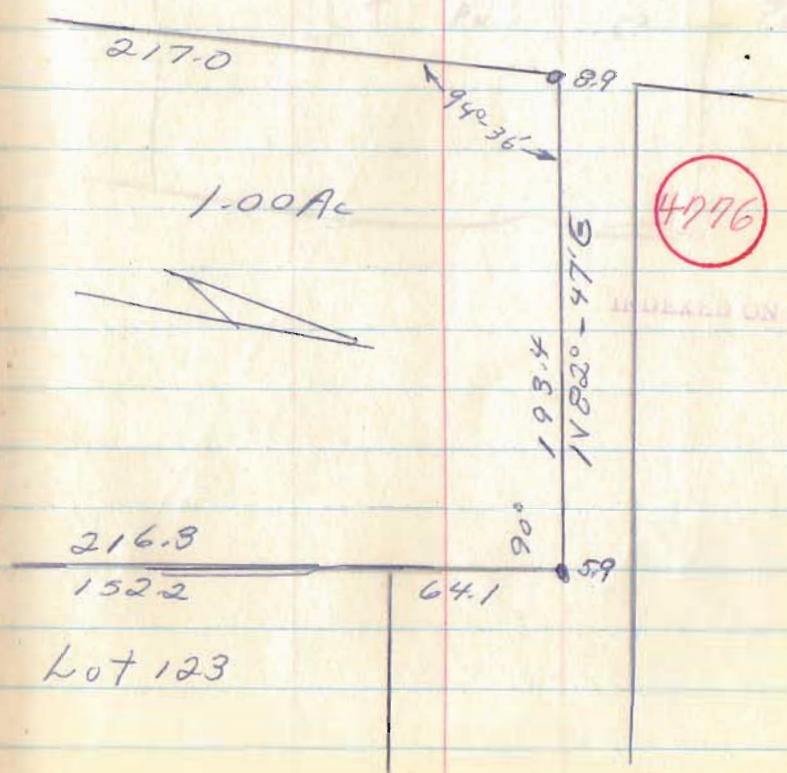


March 27, 71

Lot 115

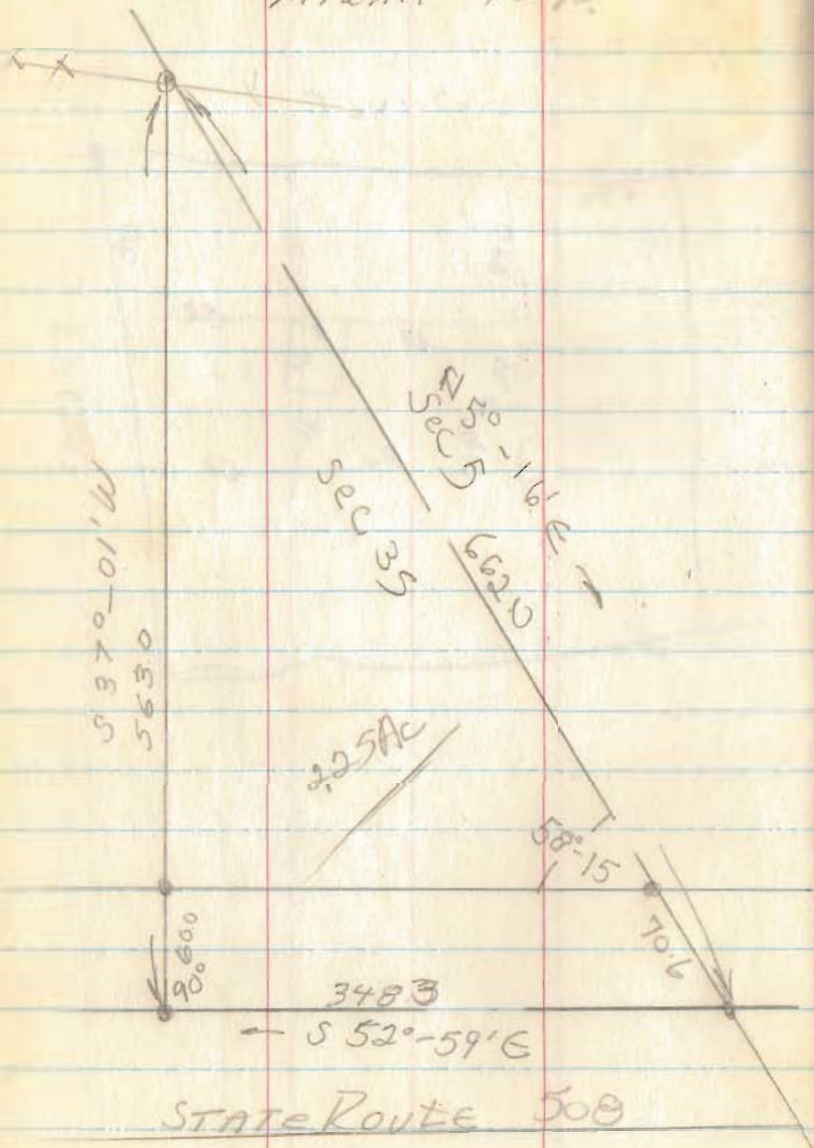


Lot 123



4996

Atterholt to Snow.
Sec 35; Town 4; Range 13
Miami Twp.



April 93 '71

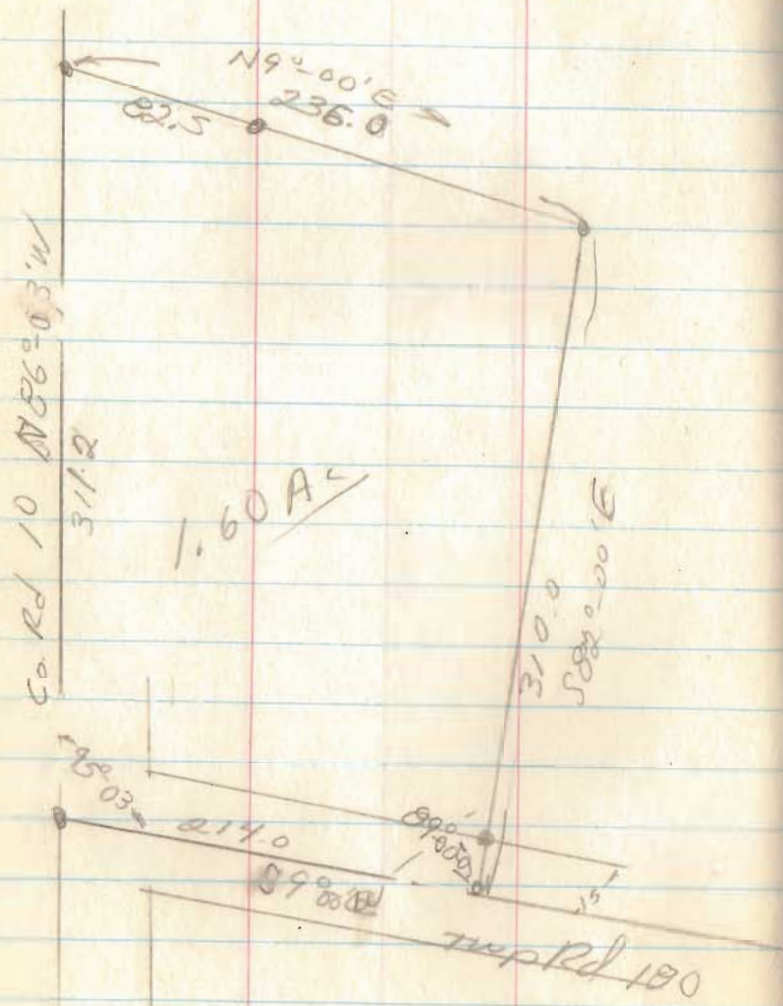
41

6135

INDEXED ON MAP

filed

G. Middle camp
 Jefferson Twp.
 V.M.S. 6450



April, 71

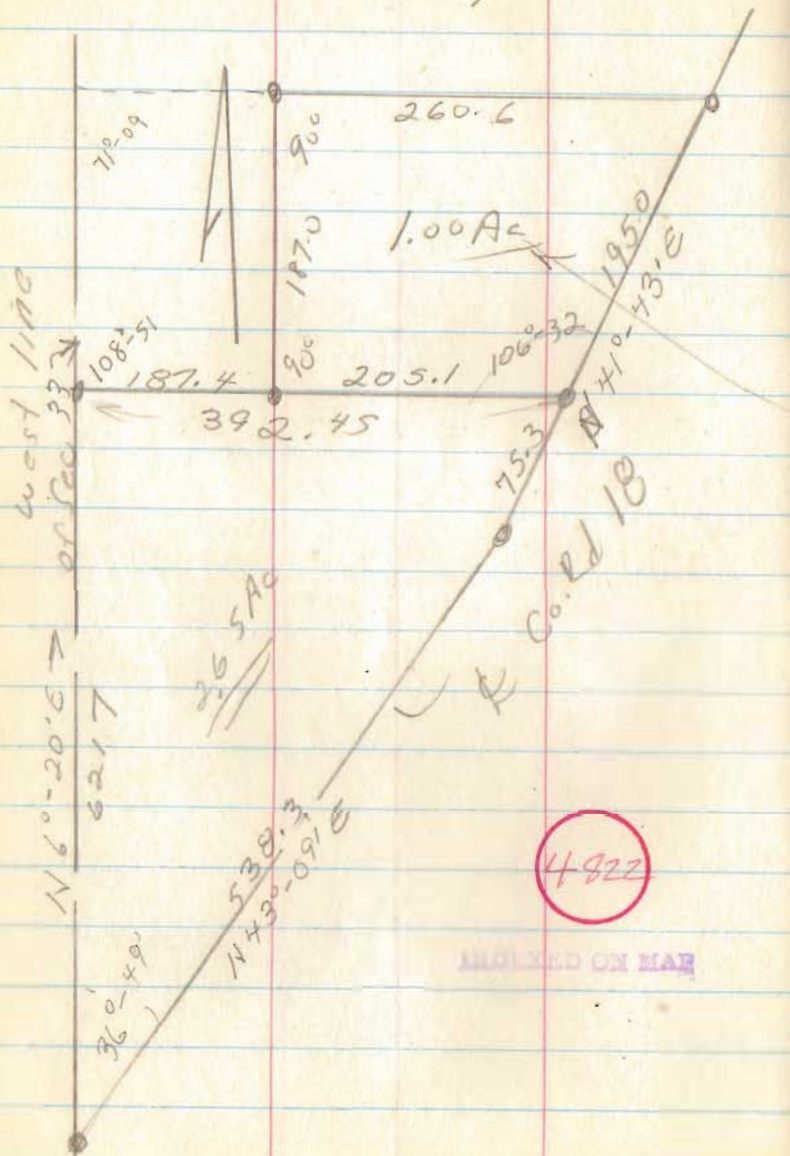
43

4817

INDEXED ON MAP

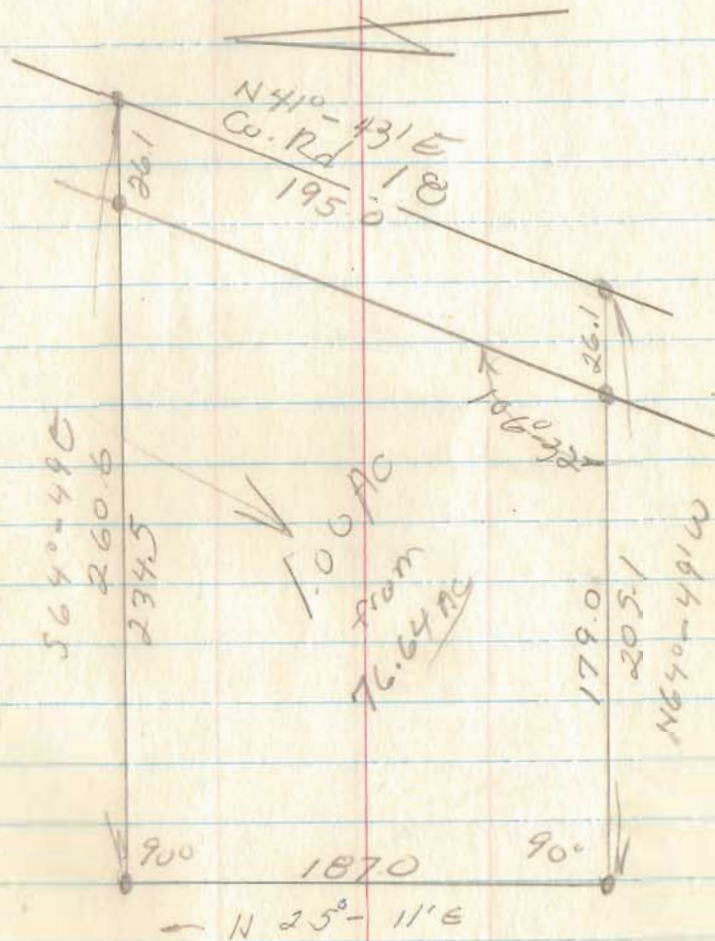
filed

Harmon to Linkinhooker
 Sec 33, T-4, Range 14
 Lake Twp



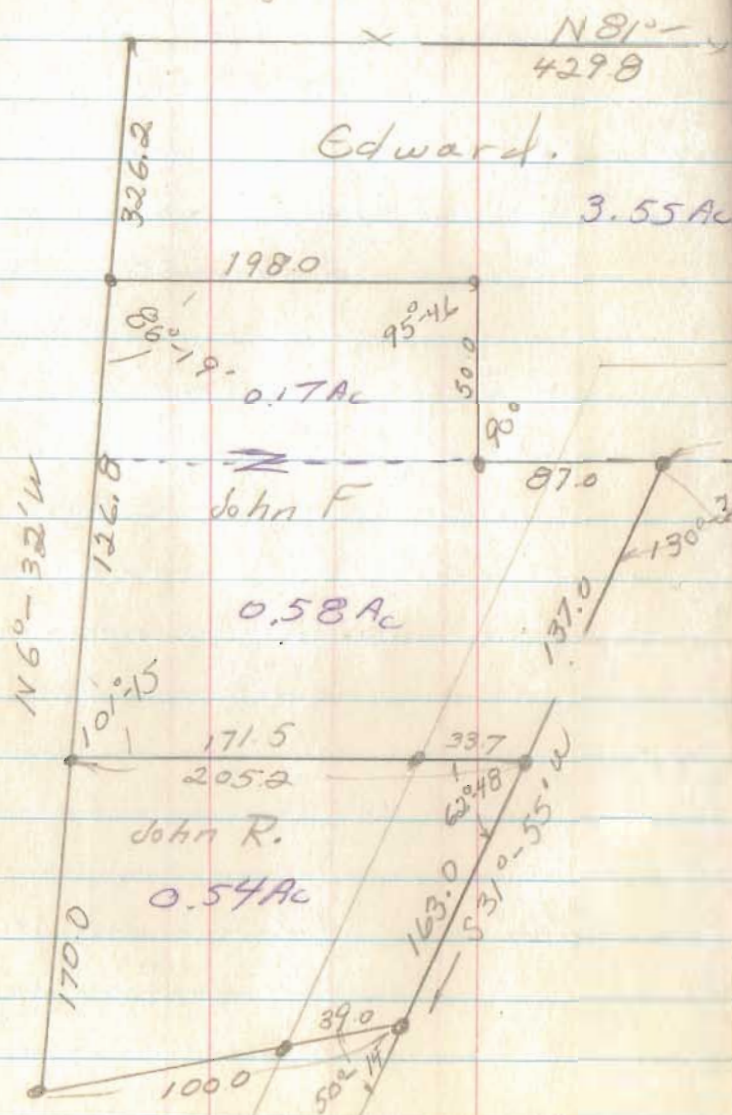
April 29, 1971

45



filed

Miller's Survey
 Nancy Stewart Sec
 Sec 1, T-1, R-15
 Washington Twp.



May 1, 1971

487



John R.
 0.54 Ac
 Greenville Treaty Line
 Twp Rd 215
 Sta 1536
 See Co. Eng'r
 F.B. 571
 1937

4871

INDEXED ON MAP

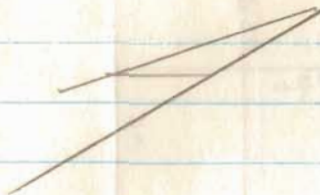
filed

W. Hone
U.M.S. 3139
Jefferson Twp.

May 8, 71

49

from G. 33 A. Tr.



Com Post

1494°-37'E

237.0

2130

4818

1156°-54'W

237.0

'S''

3.05

530.0

'M''

3.04

To Hodies

3.55

INDEXED ON MAP

560

532.0

91°02'

300

237.0

300

237.0

334°-08'W

300

342.5

305
573
569

50'E

Mon.
Sta. 52+00

See Co. Engr's F.B.

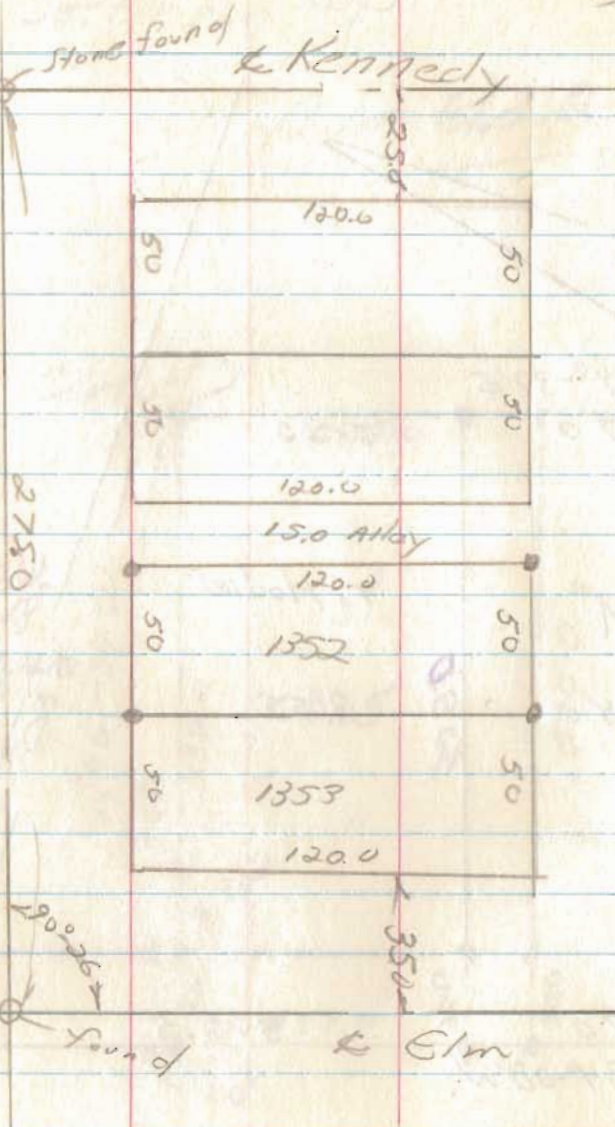
579; pg 29

60 x 165

Lot 1352
M. Miller (BELLEFONTAINE)

May, 71

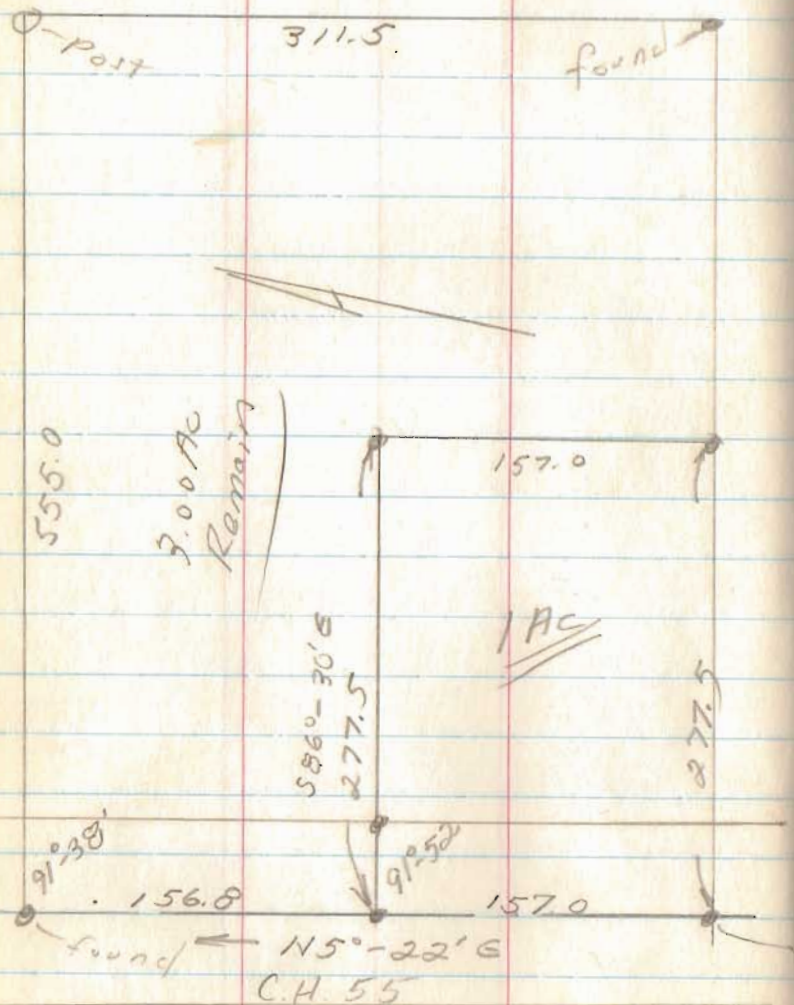
50



6558

INDEXED ON MAP

E. Stephens
V.M.S. 3320
Jeff. Twp



May, 29, 1971

52.

4815

INDEXED ON MAP

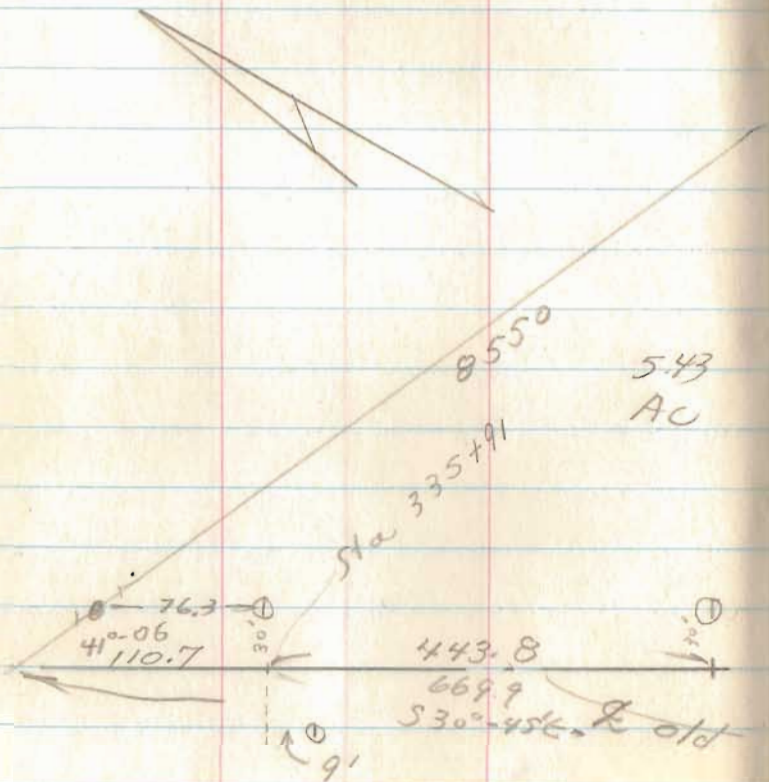
Sta 55+43
Co. Eng. F.B. 607
Pg 31

Paul Jennings Survey
 v.m.s. 3137
 Jefferson Twp

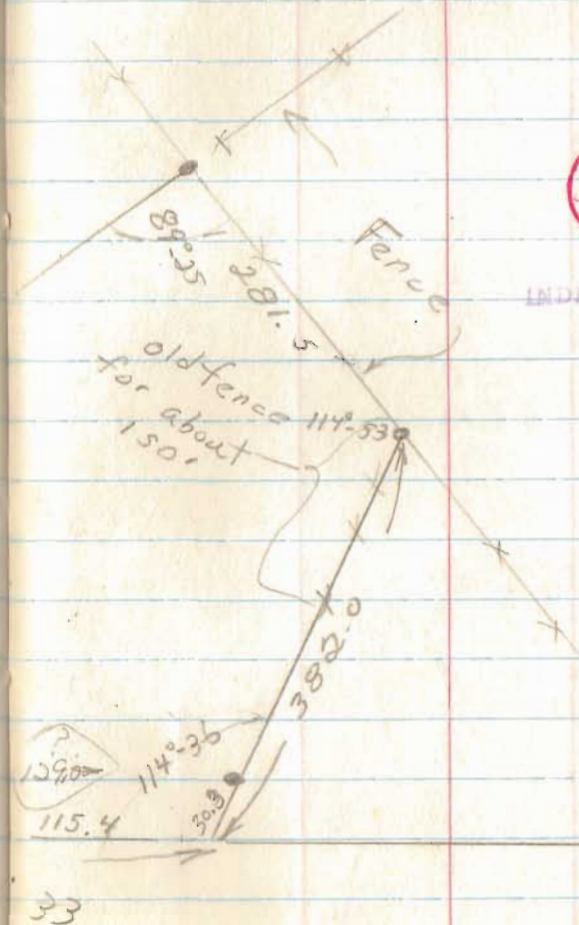
May 29, 71

54

• Denotes irons placed



543
 AC

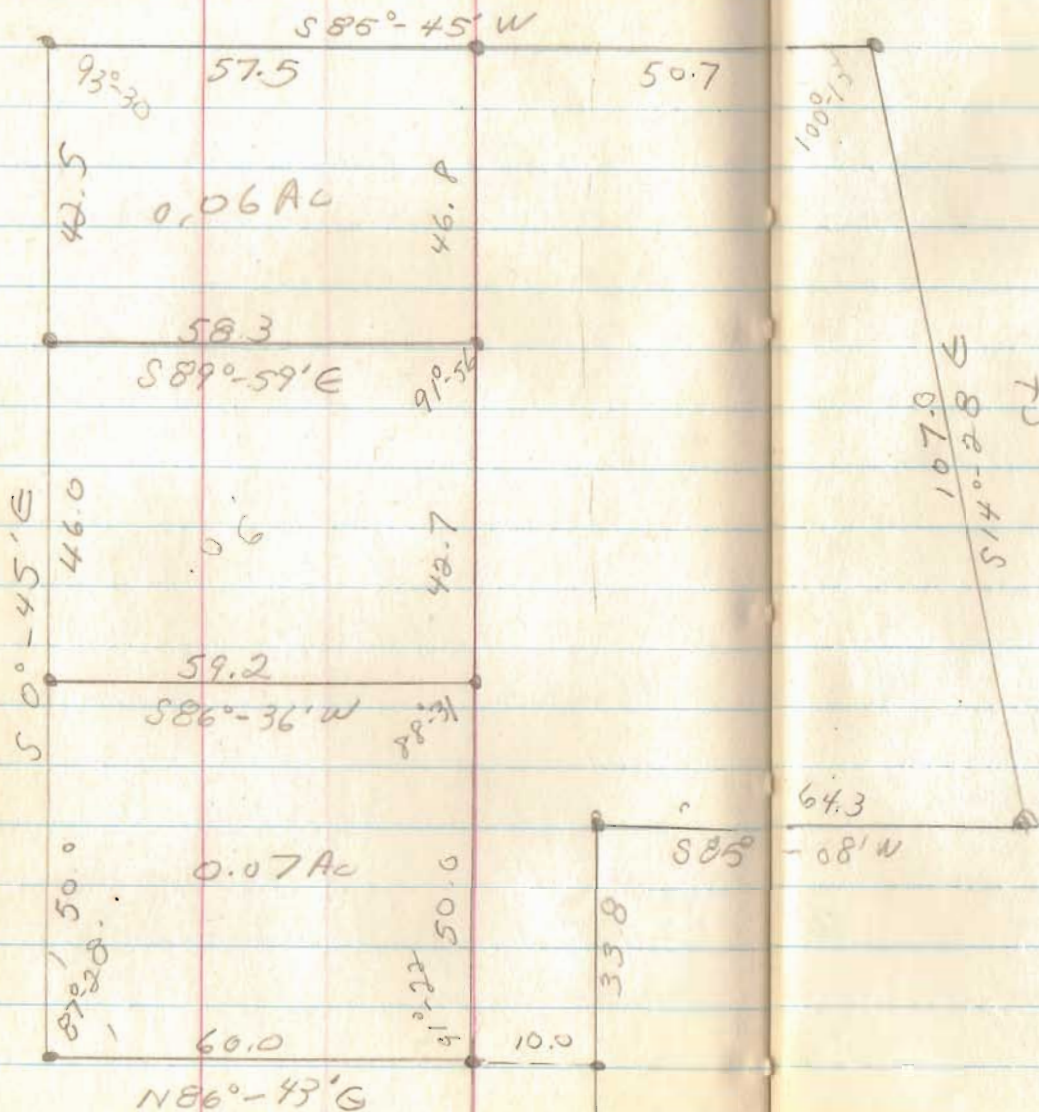


INDEXED ON MAP

Strout Realty
 for
 wages & aff
 Lake View, O

June 3, 77

56



filed

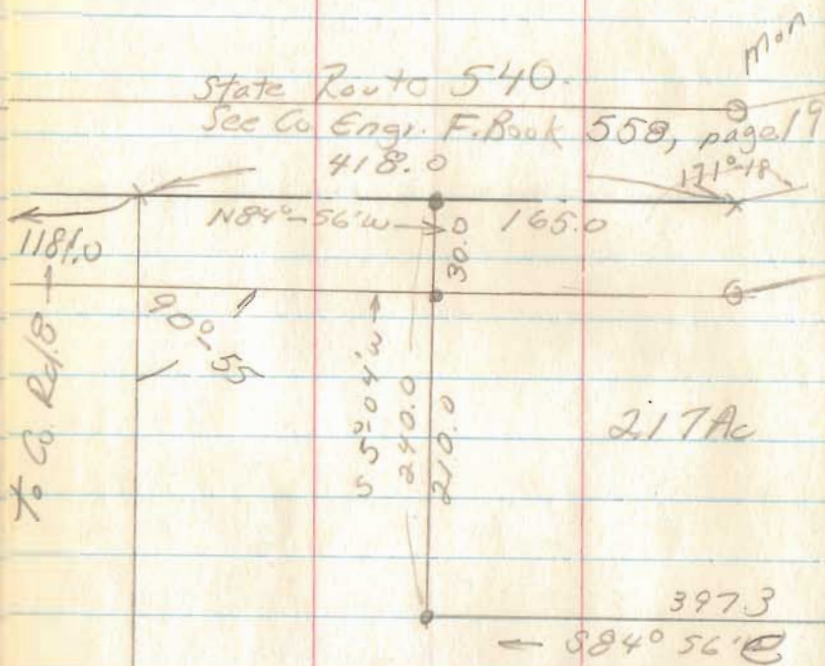
4864

INDEXED ON MAP

Holycross
 U.M.S. 5089
 Perry Twp

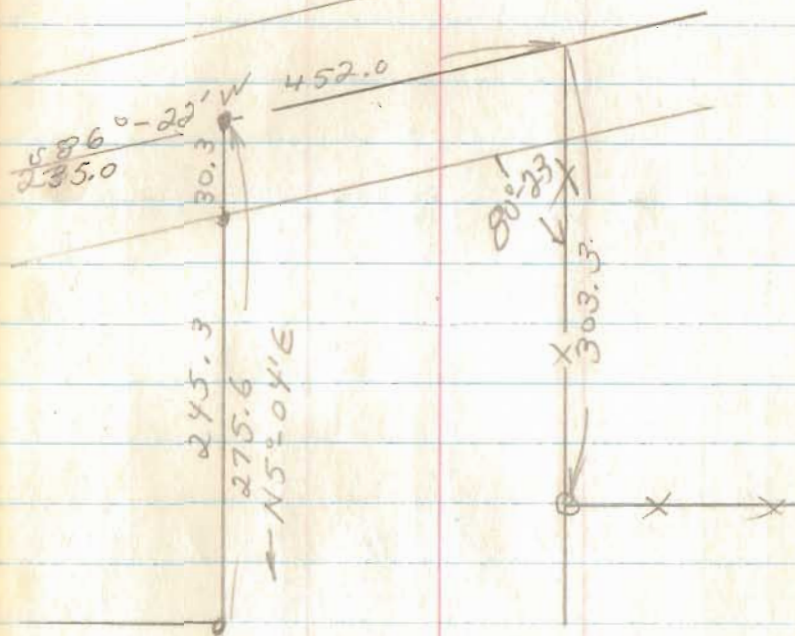
June, 71

58



217Ac

from
 16.60Ac



4844

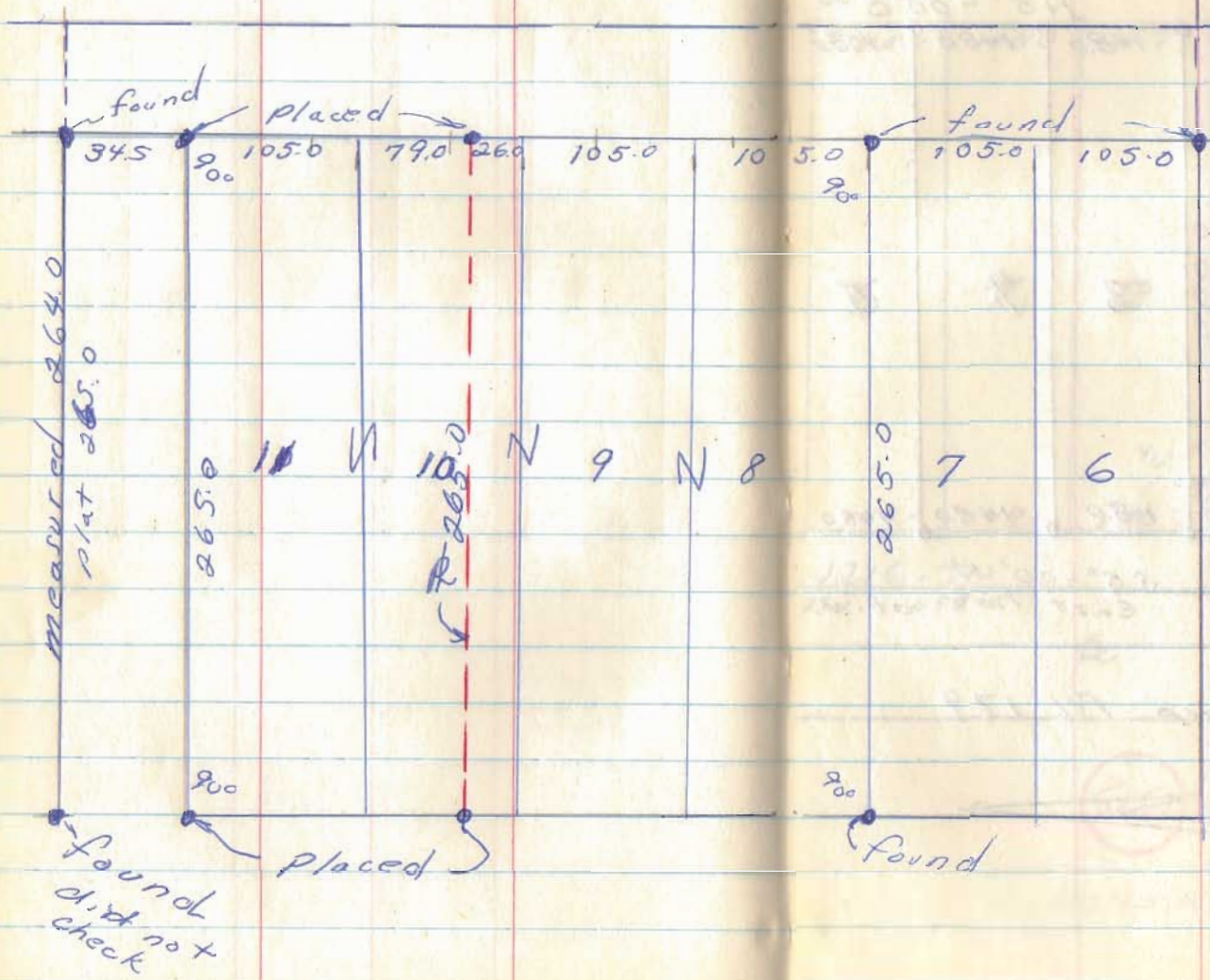
INDEXED ON MAP

Filed

For. B. COONS
 V.M.S. 3220
 Jefferson Twp
 Hillwood Allot.

June 7/11

62

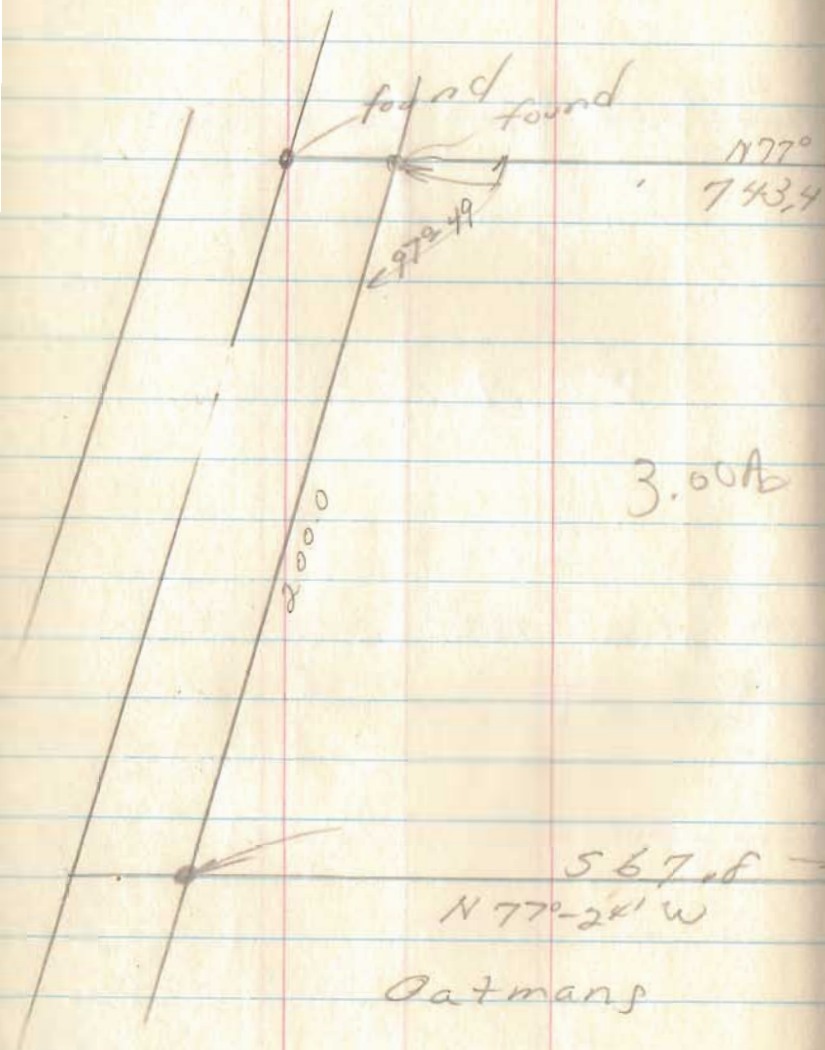


filed

6128

INDEXED ON MAP

Acherson
on
Turkey feet



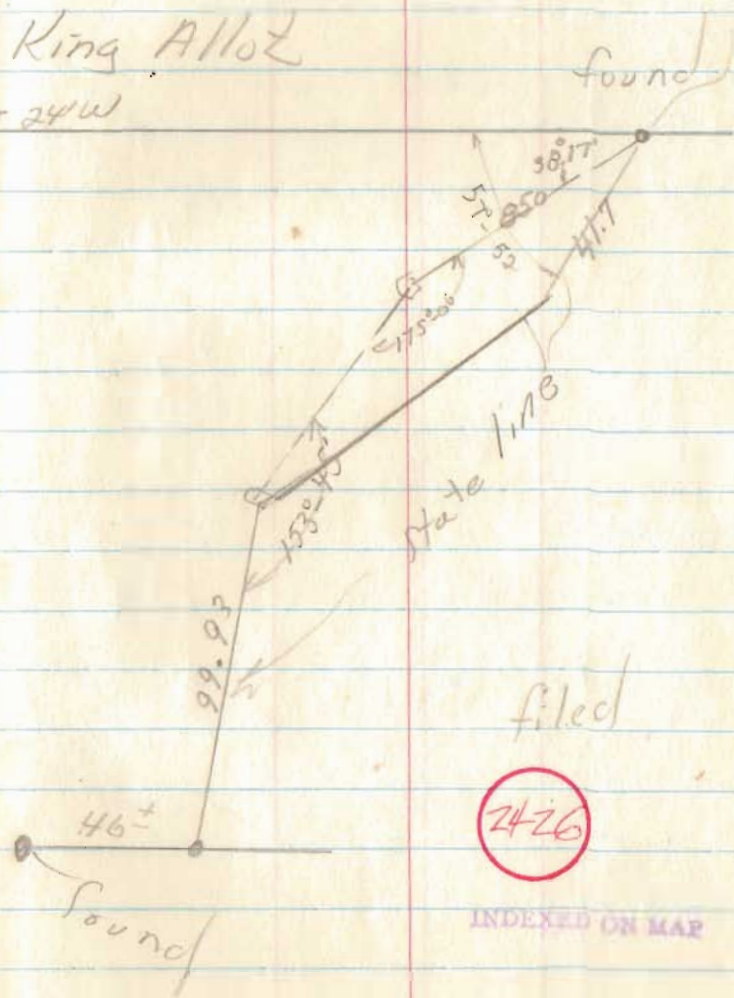
Jun 22, 71

63

King Allog

N 77° - 24' W

743.4



Rose to Belte
 V.M.S. 10306
 McArthur Twp

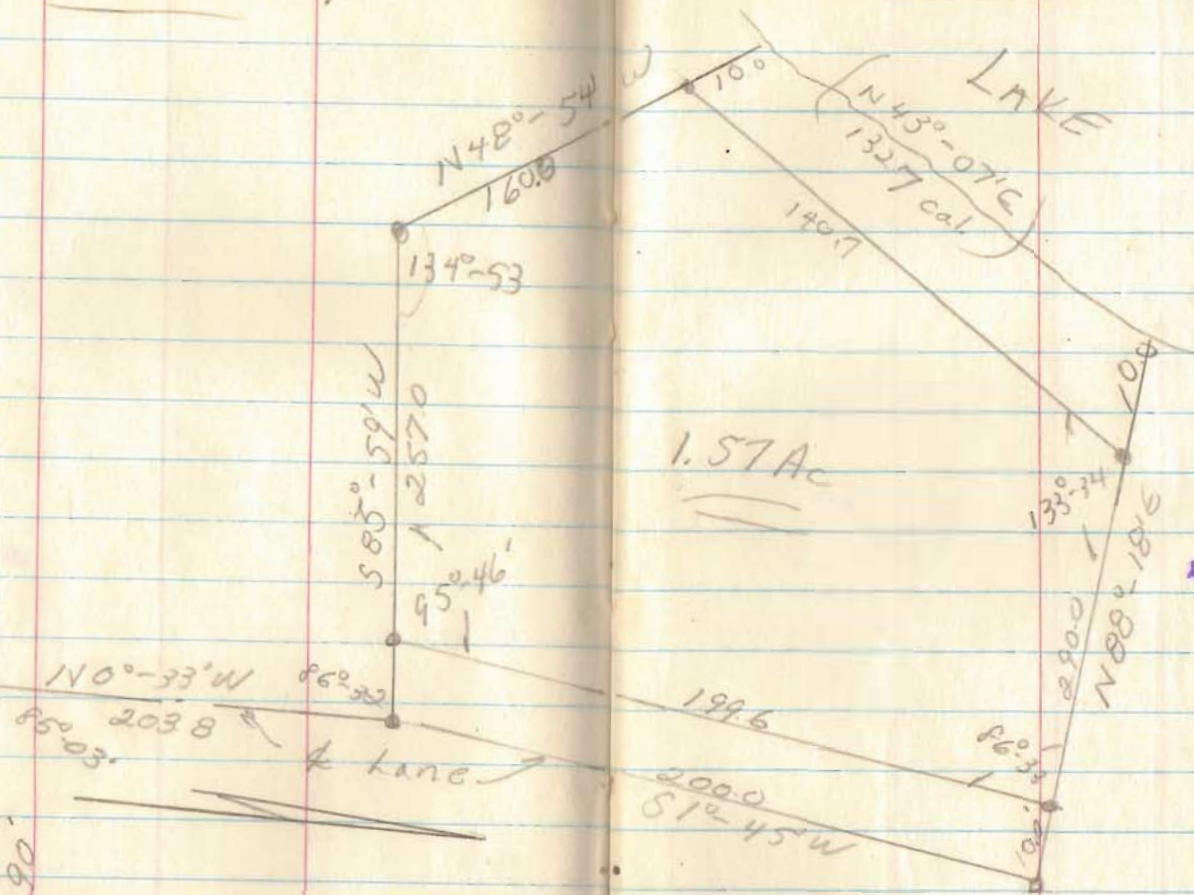
June 20, 71

65

Also Greenville Treaty Rd

Co. Rd. 57

584'-30" W
 6290'



134°	53
95°	46
88°	33
133°	34
108°	46

INDEXED ON MAP

filed

3485 West

Co. 12257

Stone at Sta. 50+21
 See Co Engr Field

Book 588; pg 68

Catholic Cem.

67

