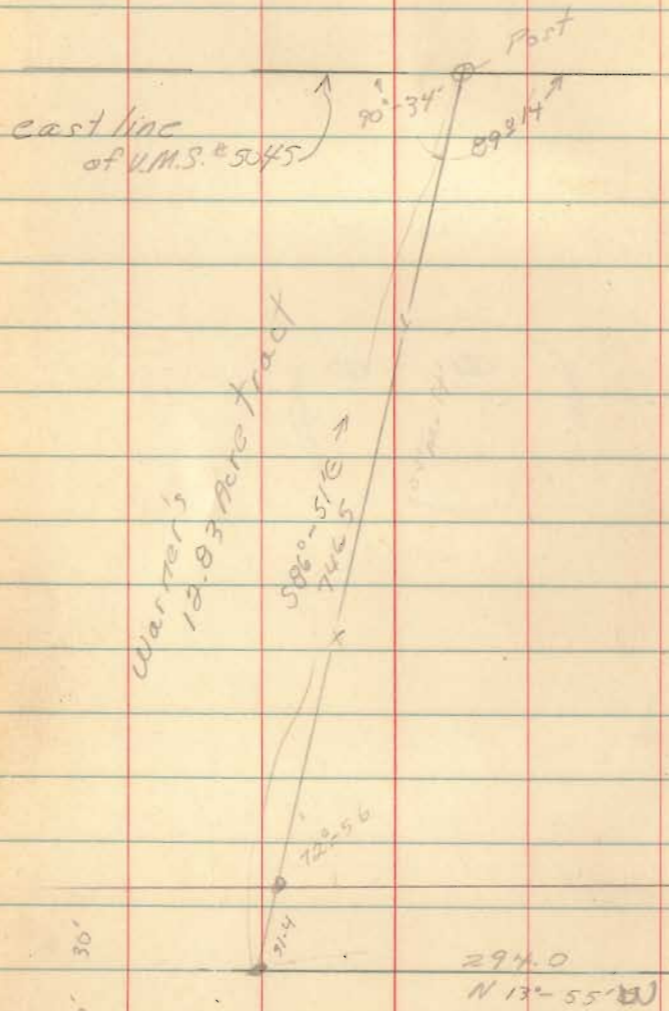


Marquis to Fitzpatrick
Lake Twp. V.M.S. #5045



See Bk 5

2

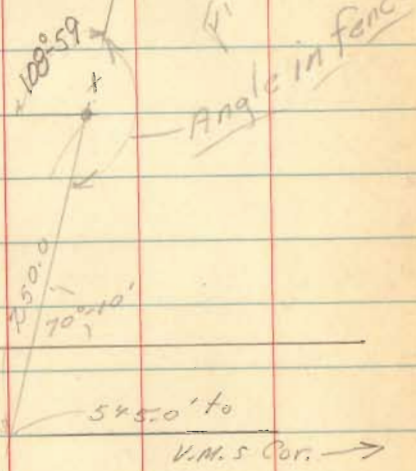
3582
2968

53° 55' W
533.7

INDEXED ON MAP

Cor. Post
25.0

6.66 A

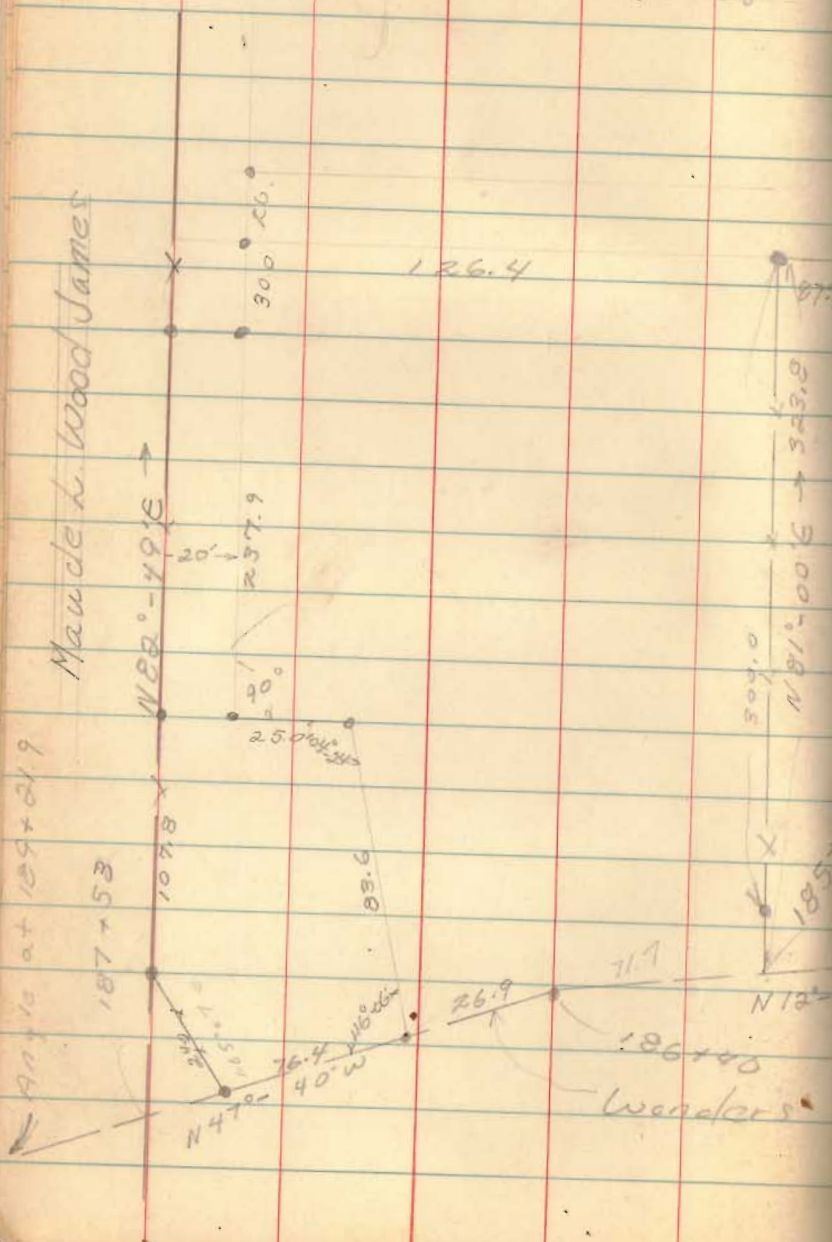


E Ludlow

R. Bowman

Richland Twp. V.M.S. 9968

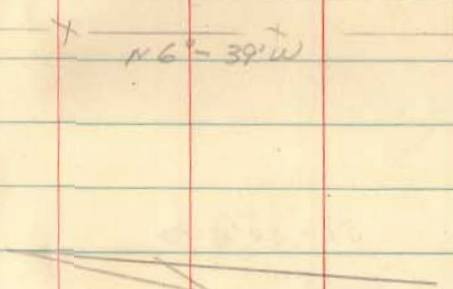
Maudie to Wood James



See BK 5, pg 10

4

C. Cronwell



3955

INDEXED ON MAP

184+97.3

N 12° - 40' W

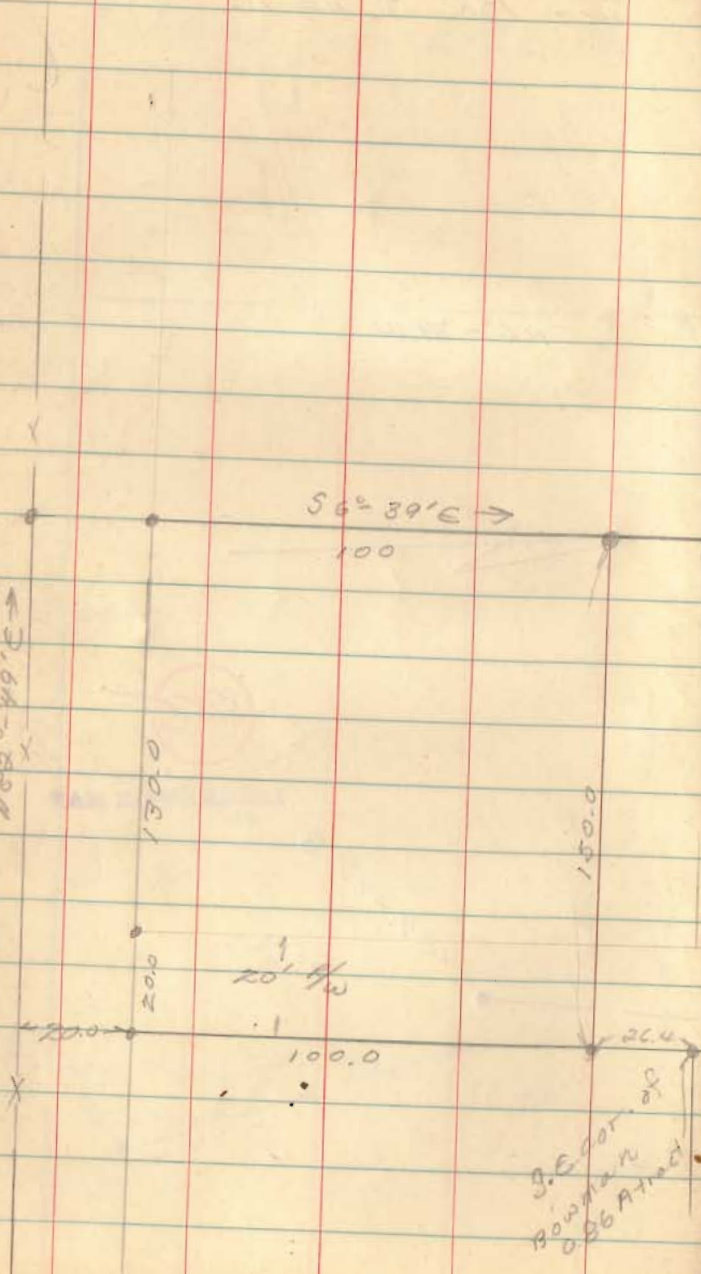
Wander's line

Bowman

Wood's 5405A

Mount James

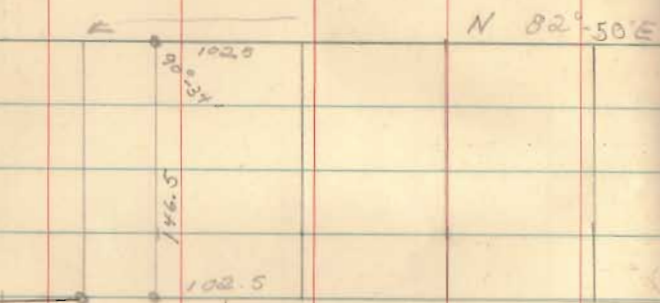
$N 89^{\circ} 49' E \rightarrow$



5

3955

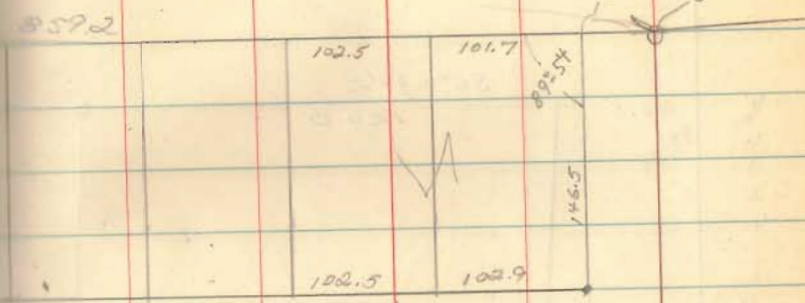
INDEXED ON MAP



Proposed Ext.
 of C.M. # 96
 P/K

30' 20'

N 82°-50'E



20' Drive

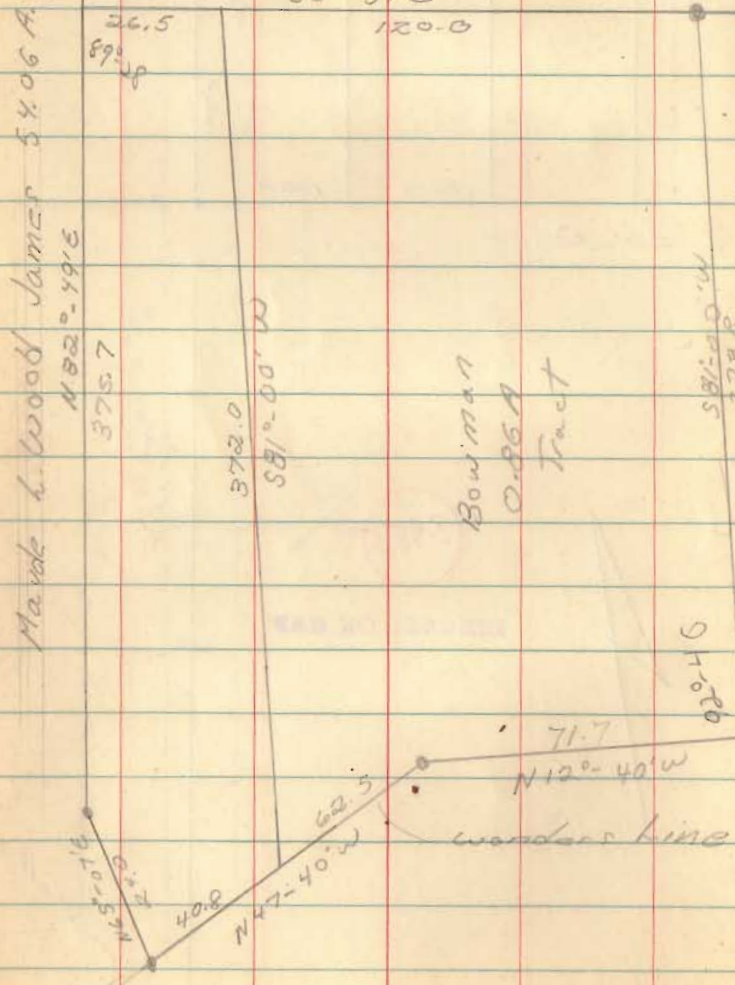
3955

INDEXED ON MAP

20' P/W

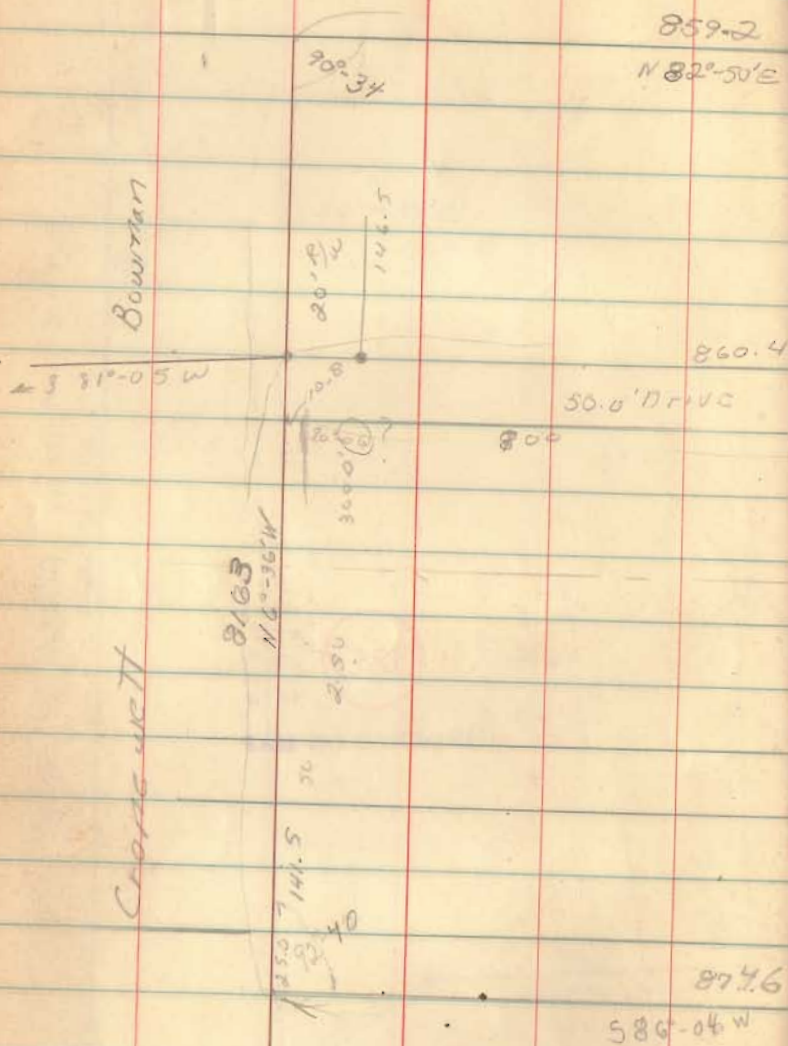
Co. Post
 Stone

Stone

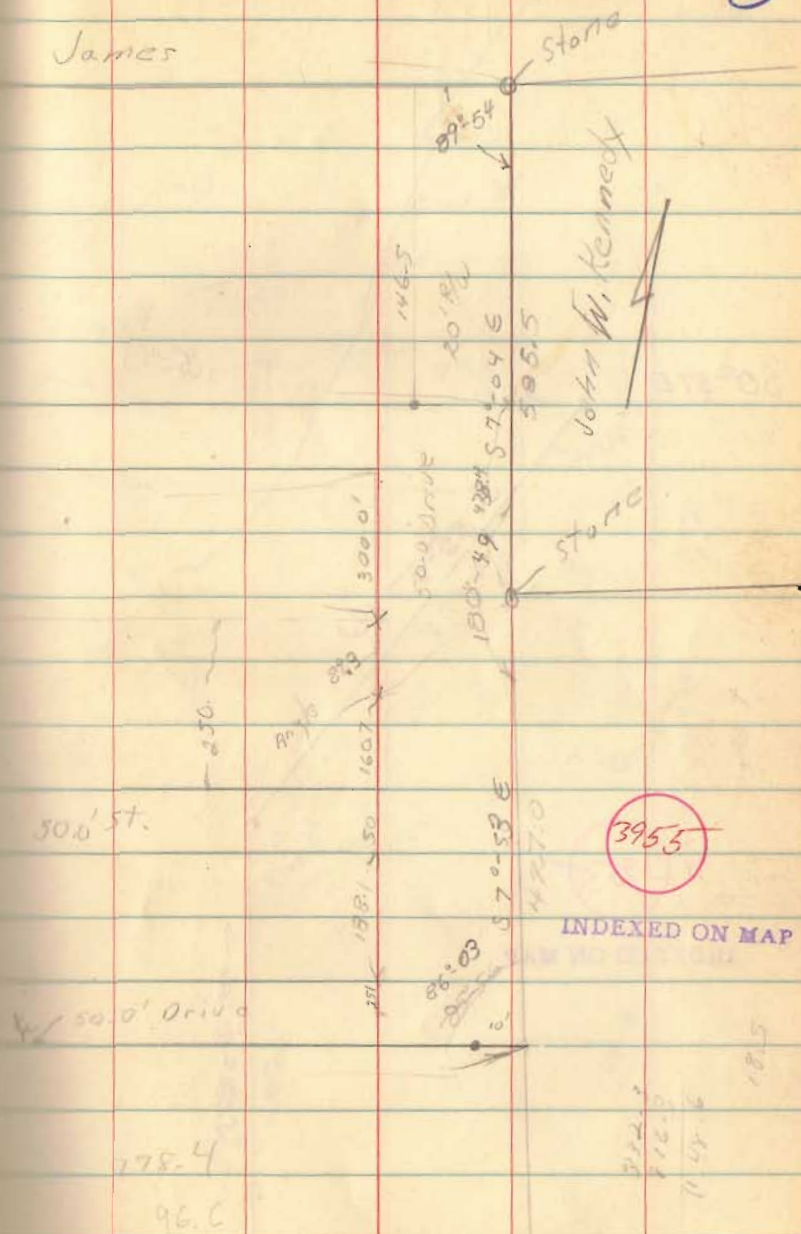


3955

INDEXED ON MAP



James



8

$50^{\circ}-57^{\circ}E$

14.8

$58^{\circ}-37^{\circ}W$
4.7

$168^{\circ}-44$

3955

INDEXED ON MAP

153.7

$58^{\circ}-30^{\circ}W$

182.5

157.0

9

5.85
4.85

$N 29^{\circ}-52^{\circ}W$

$N 13^{\circ}-04^{\circ}W$

149.3

76.4

76.1

$170^{\circ}-12$

64.5

74.3

75.0

$94^{\circ}-09$

75.7

176.1

140.0

150.0

$57^{\circ}-10^{\circ}E$

204.1

106.4 not

$58^{\circ}-00^{\circ}W$

175.6

139.0

100.0

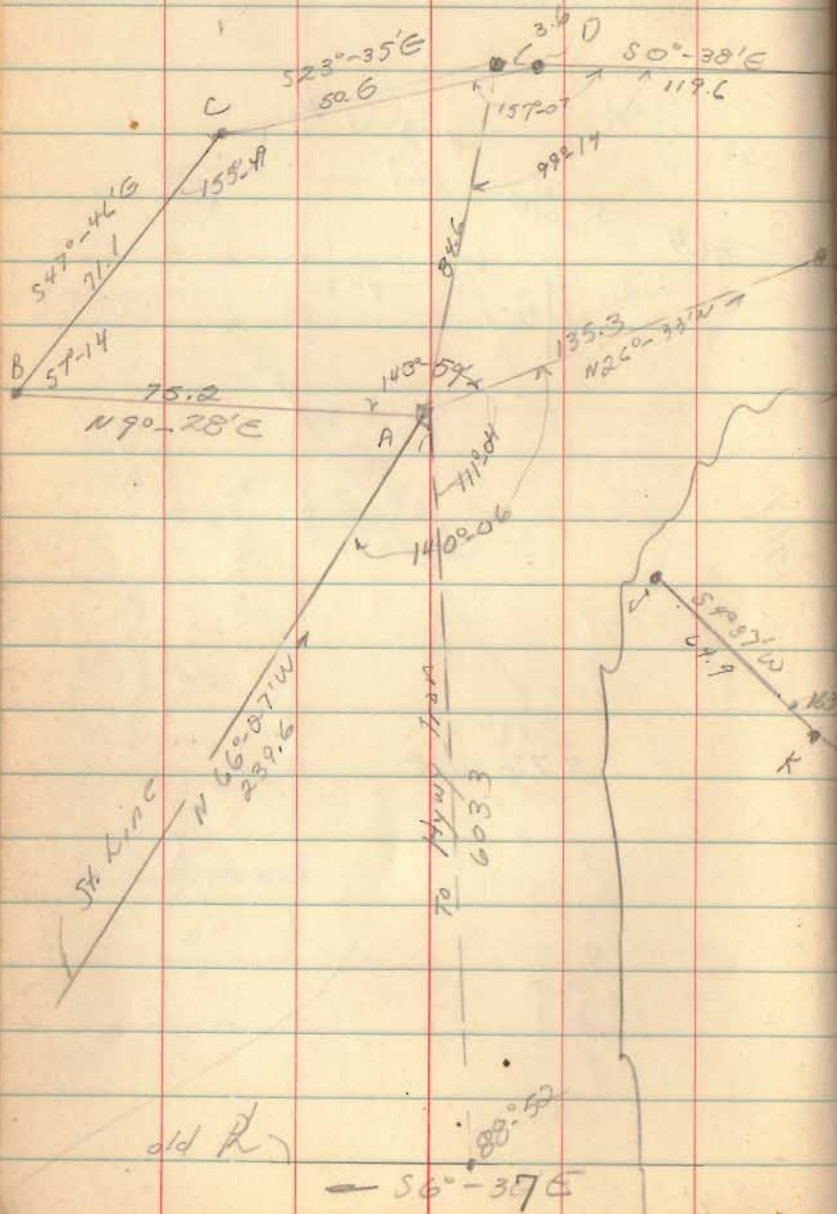
214.0

214.0

85.0

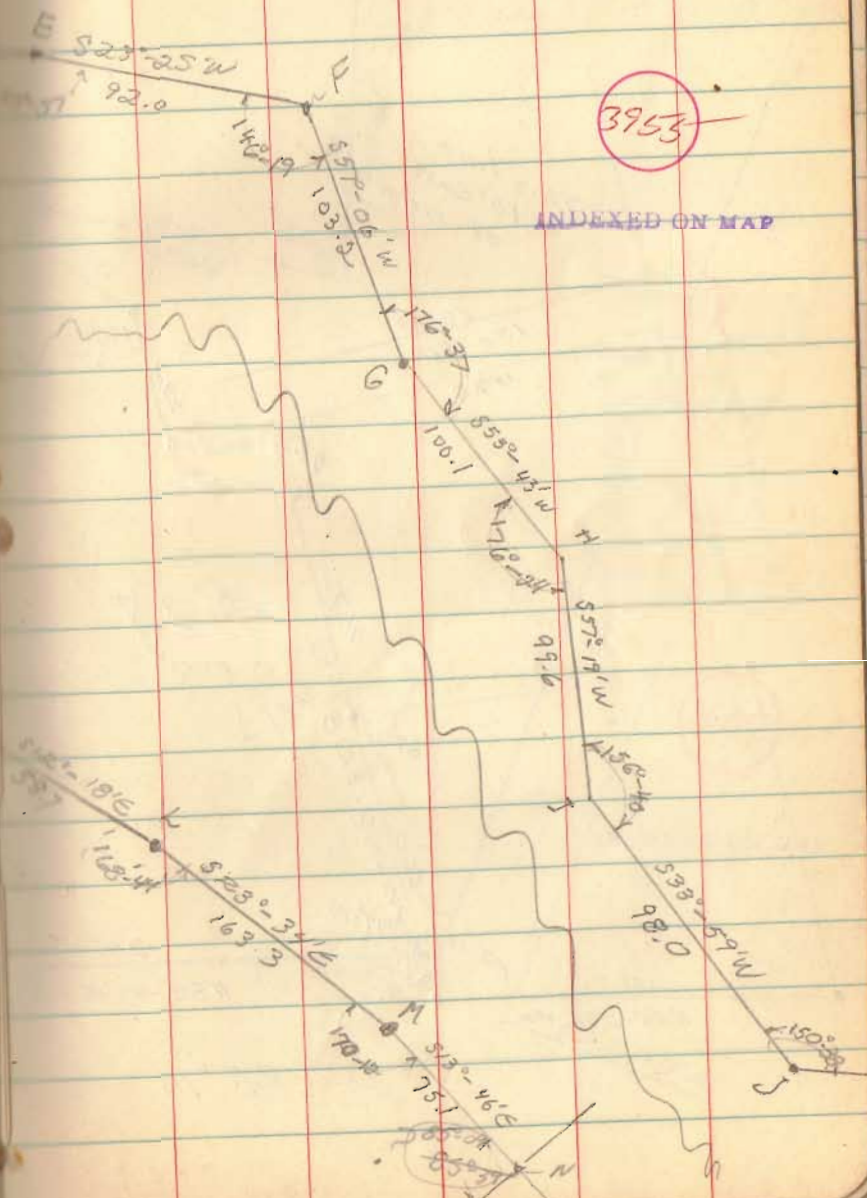
25.0

10.0' Offset line
for Lewis line at Rowman

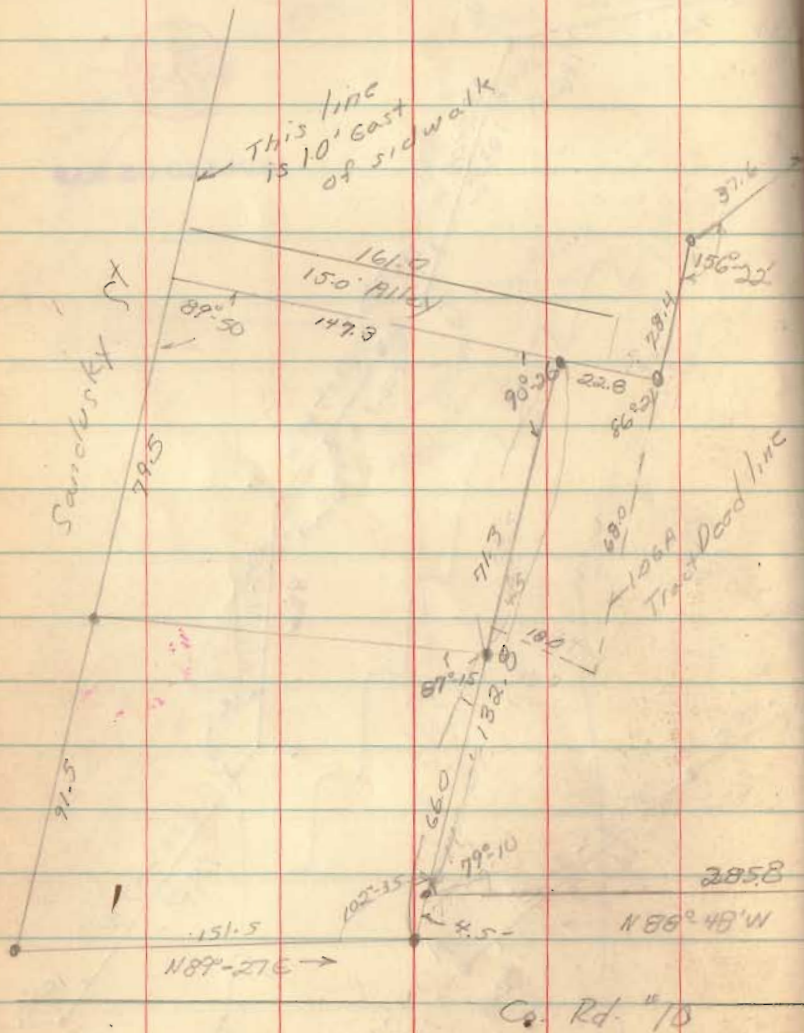


3953

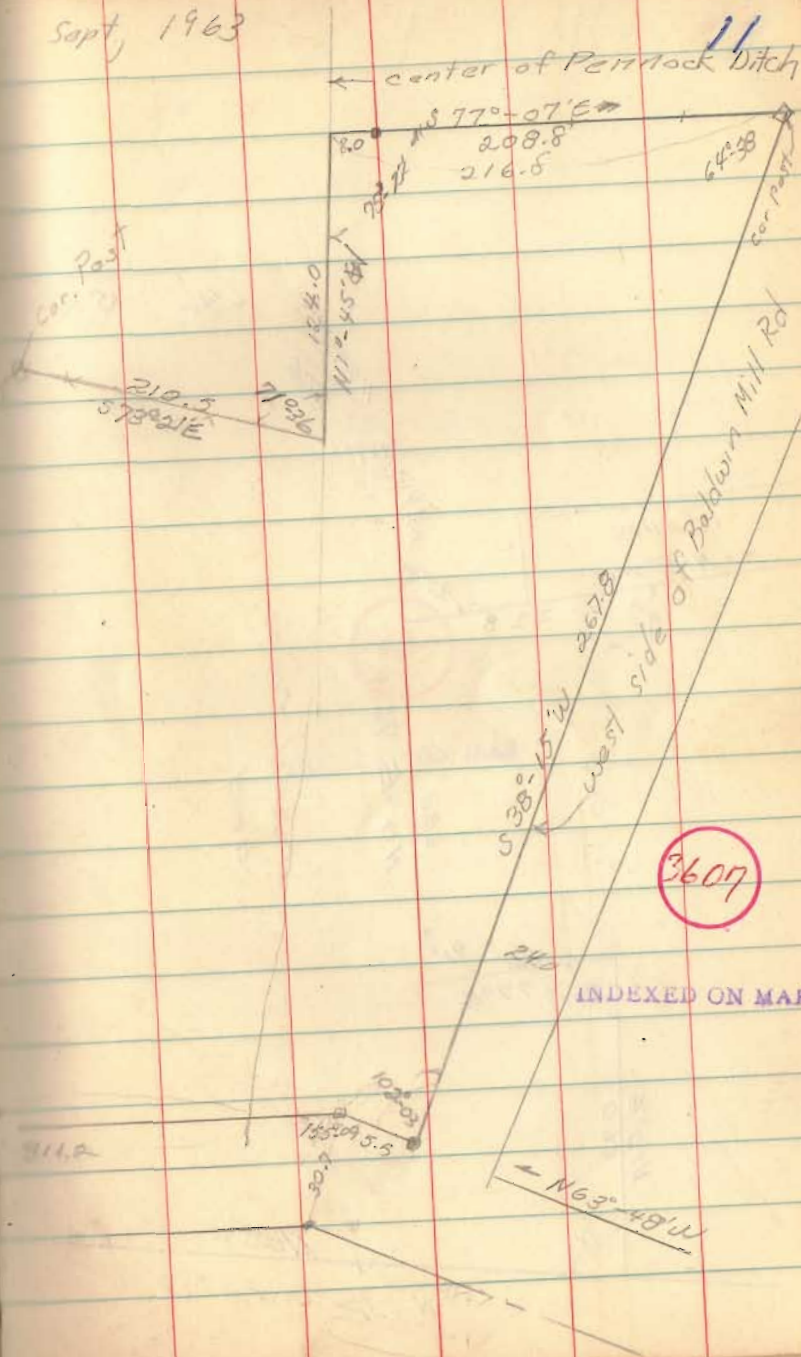
INDEXED ON MAP

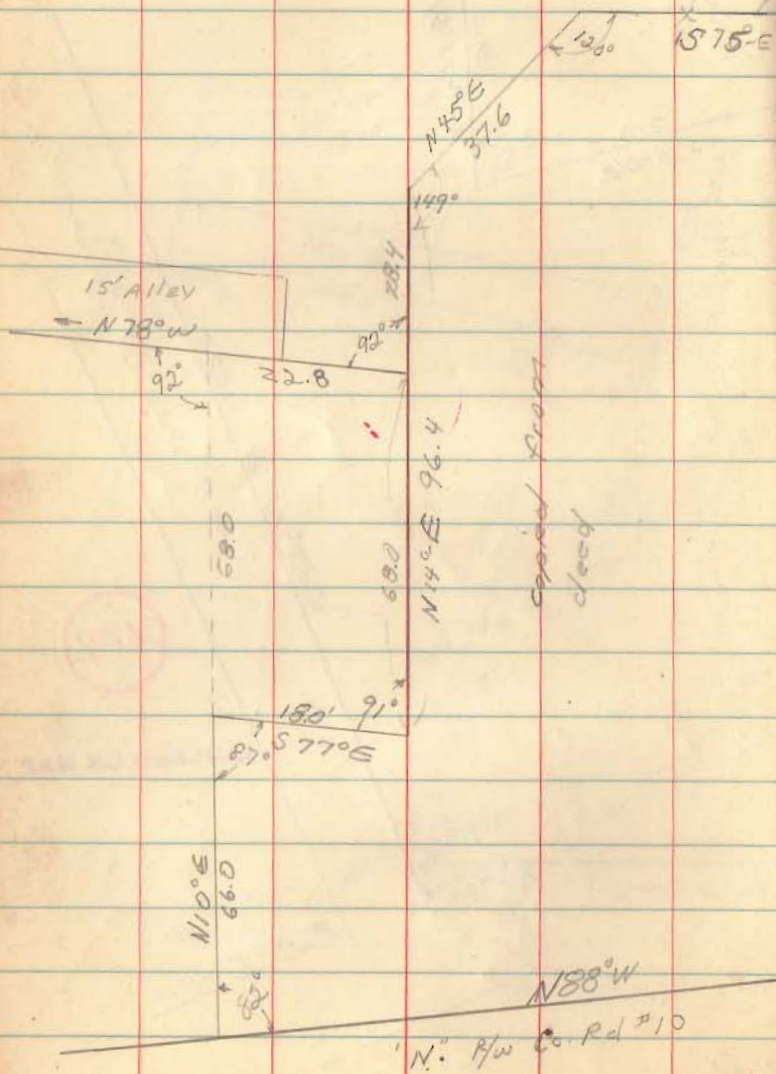


Young Surv
Zanesfield
V.M.S. 3137



Sept, 1963



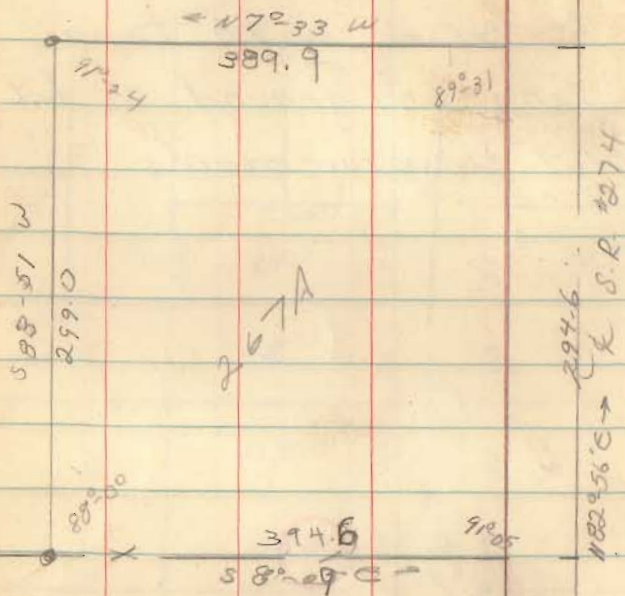
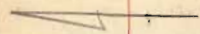


existing fence

3607

INDEXED ON MAP

Roby to Clark
V.M.S. 9933
Rushcreek Twp



John Kemp
54.45 A

~~S.T.S.
V.M.S. 9933
3666~~

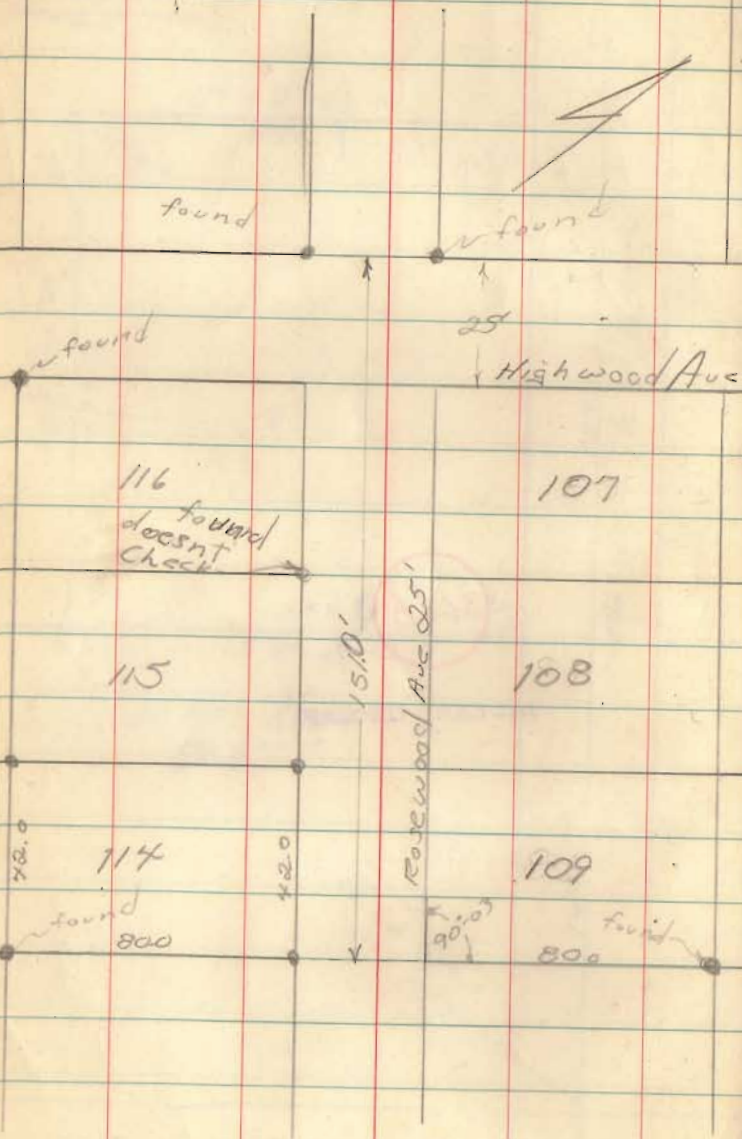
Mar. 7, 64

14

3666

INDEXED ON MAP

Laycock
Nicholson's Add.



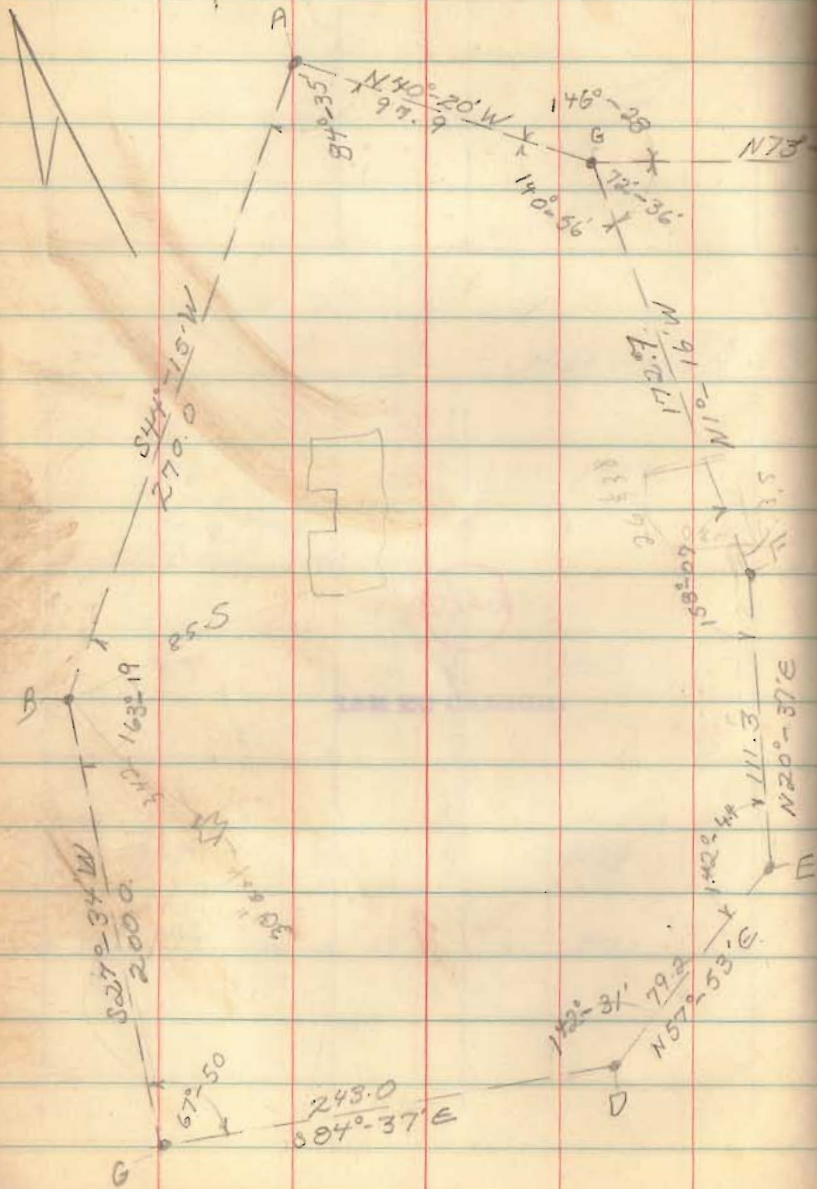
April 11, 64

15

6522

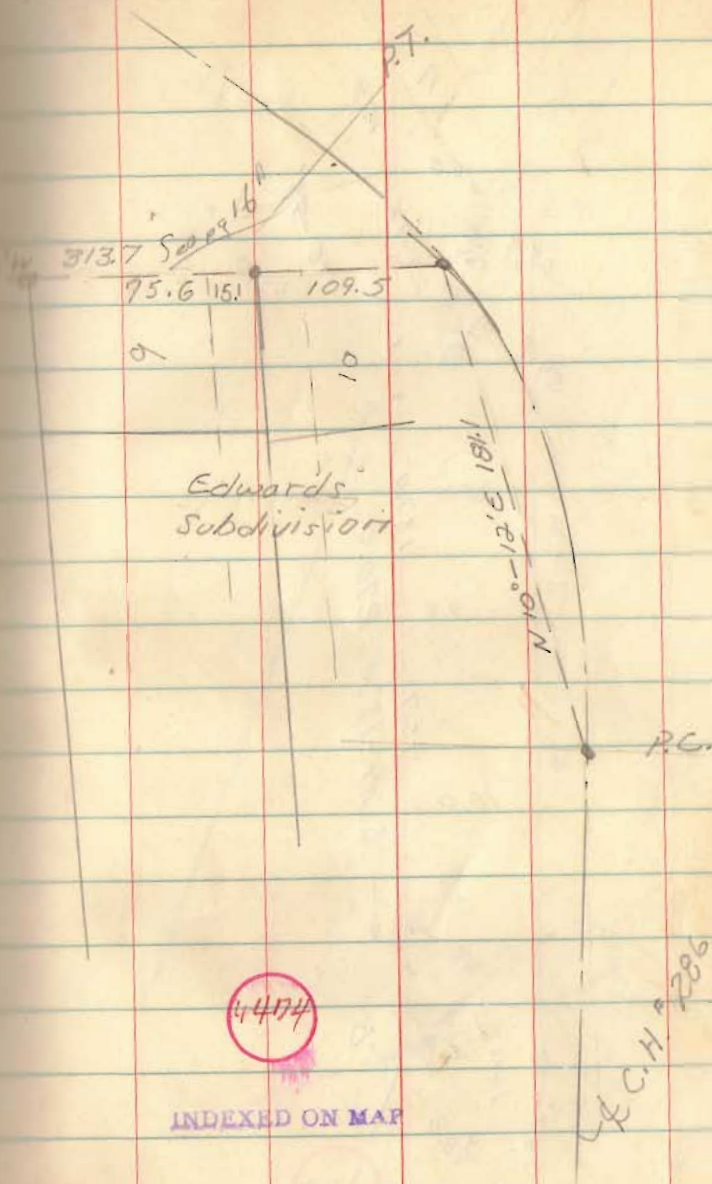
INDEXED ON MAP

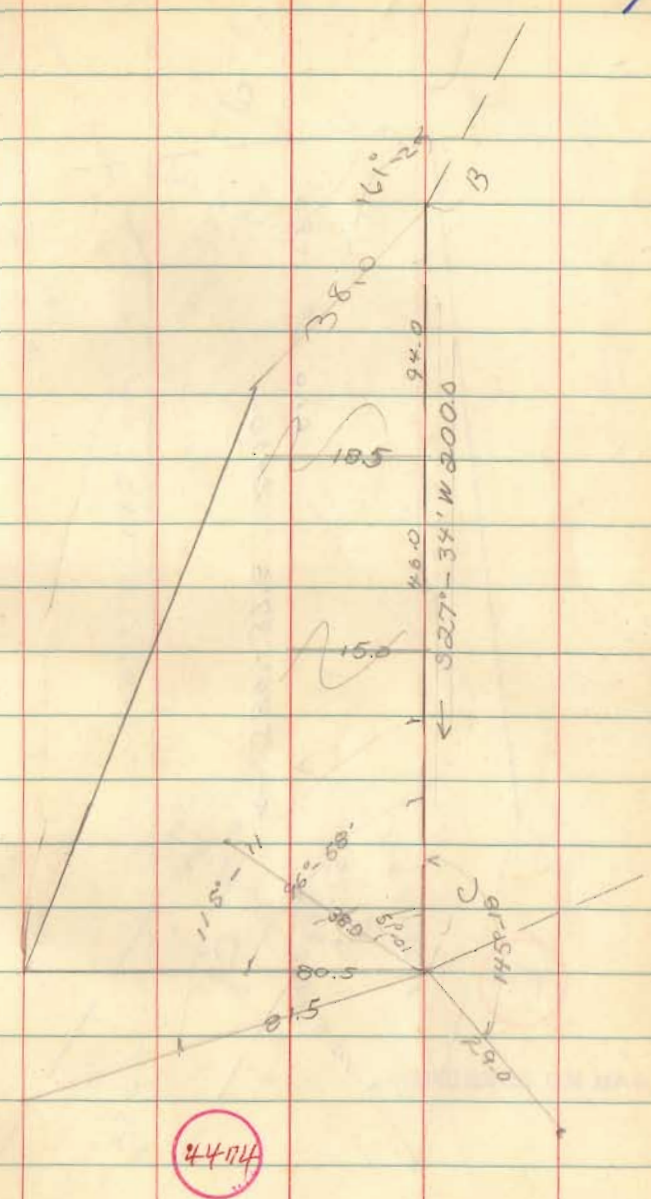
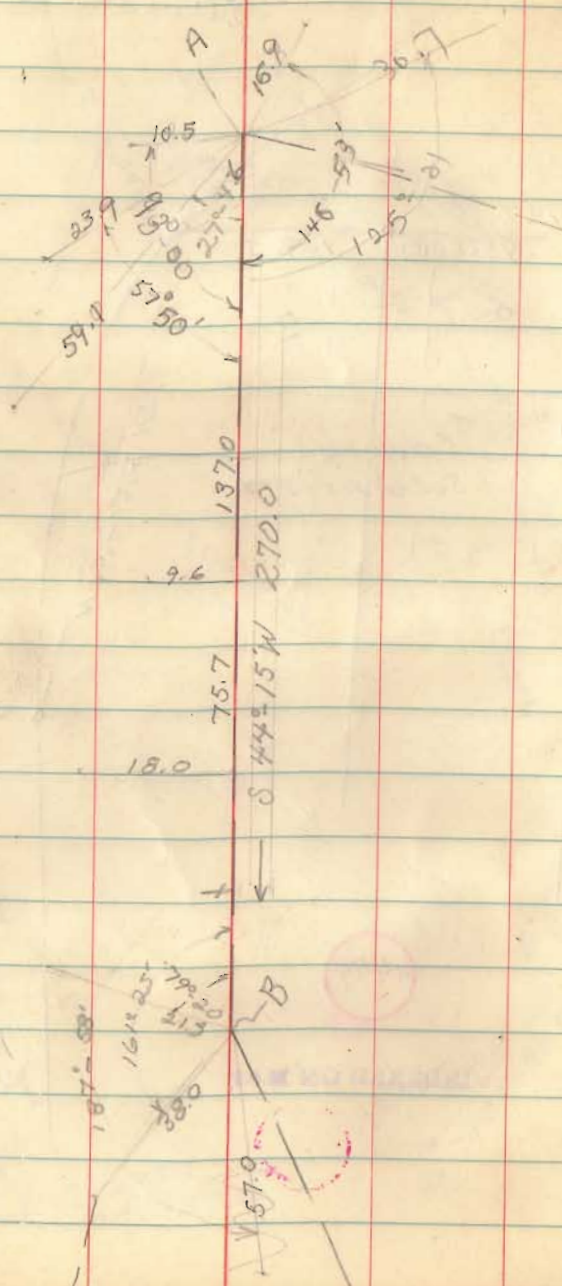
Base Line for
Turkey Foot Island



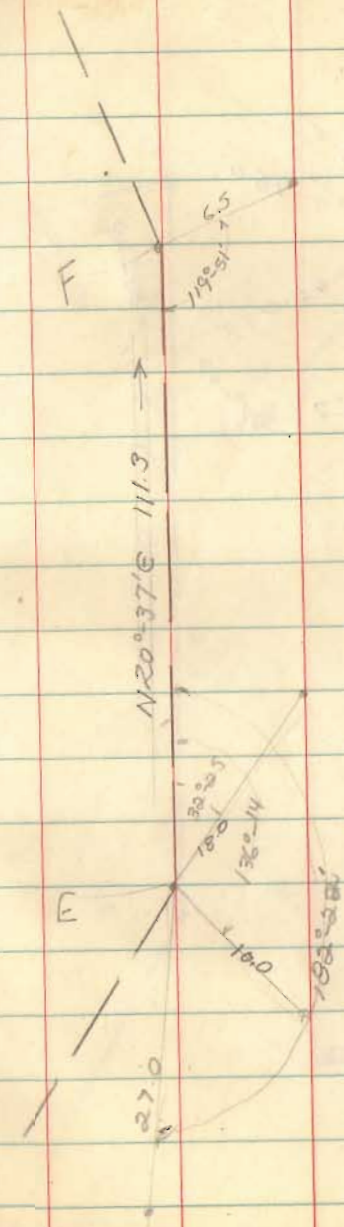
April, 64

16



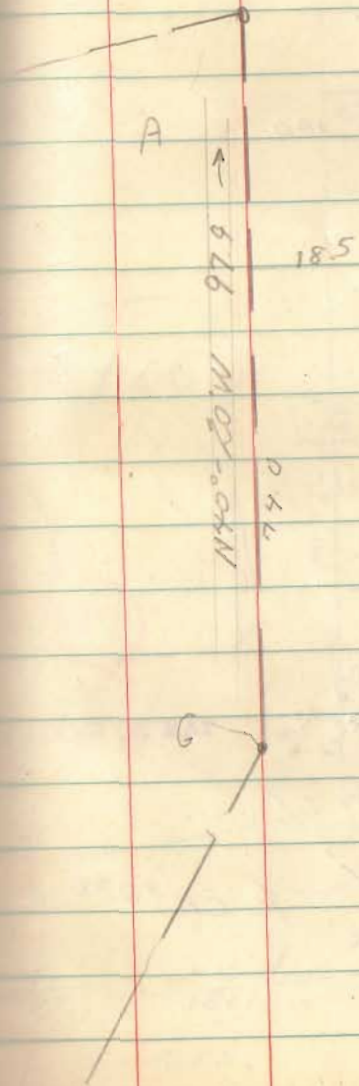
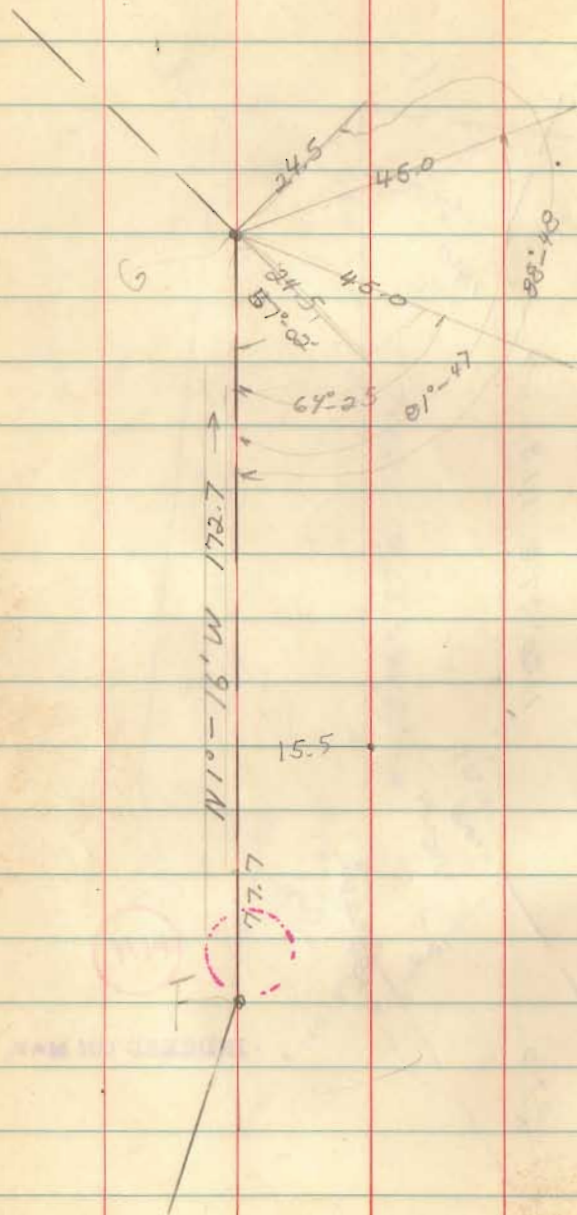


4404
 INDEXED ON MAP



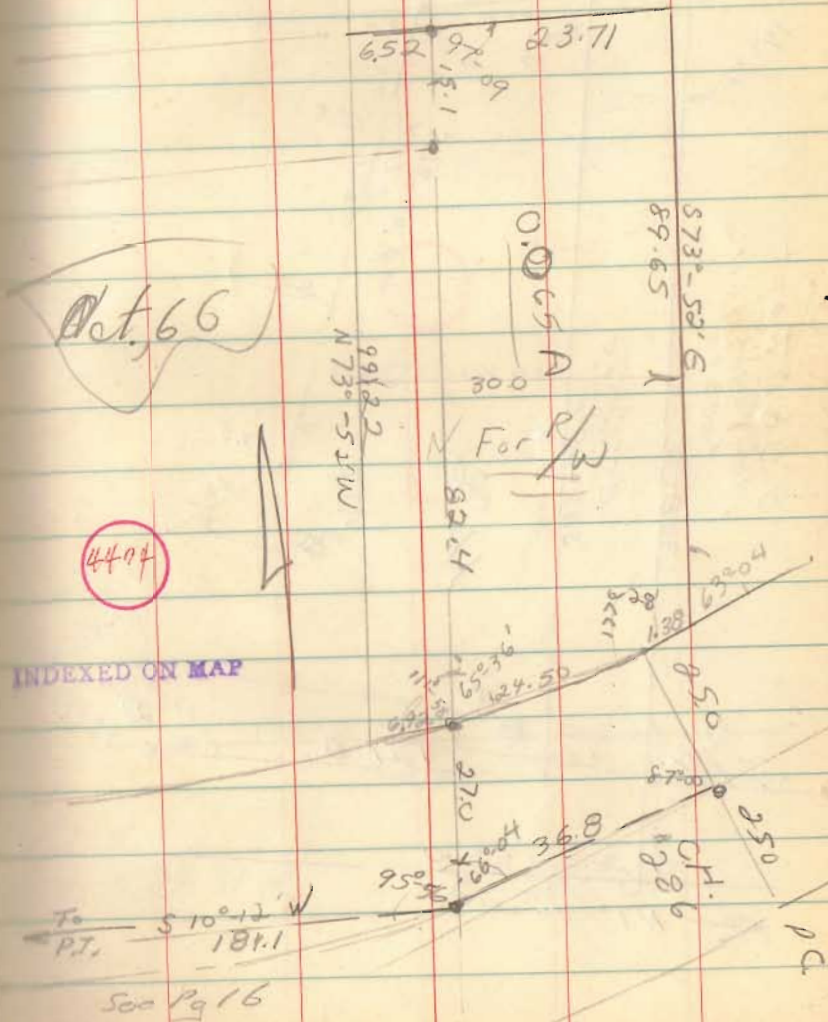
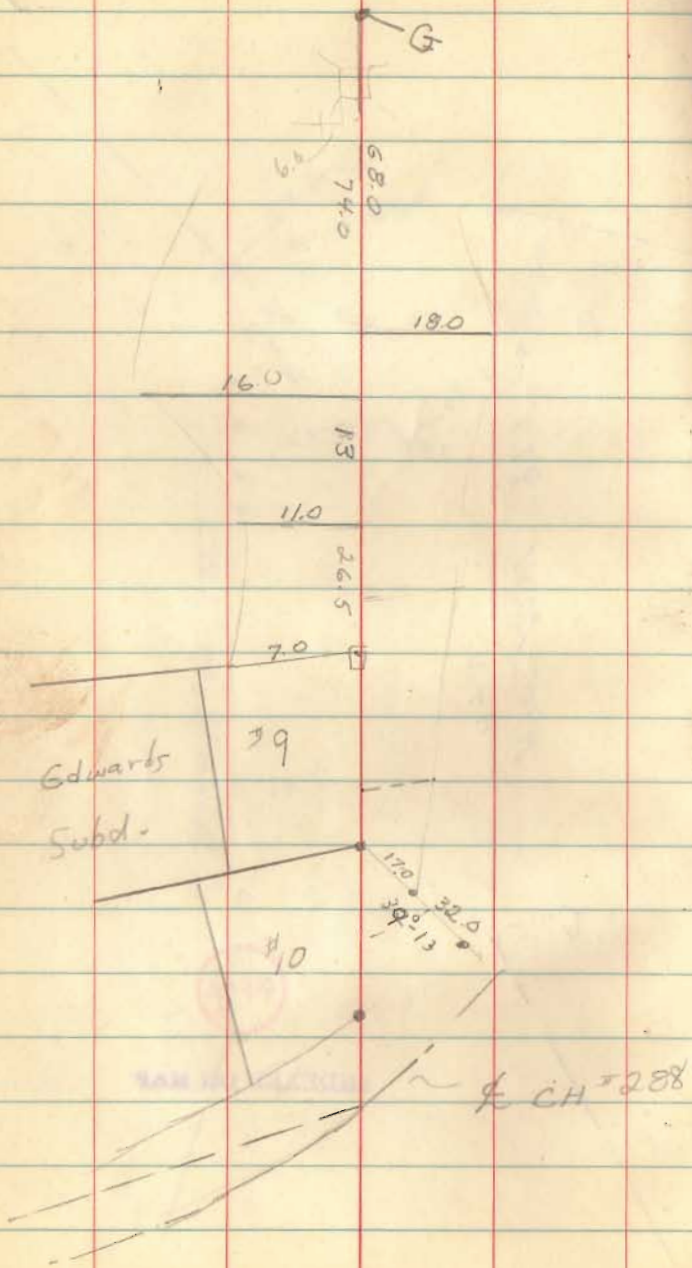
4474

INDEXED ON MAP,

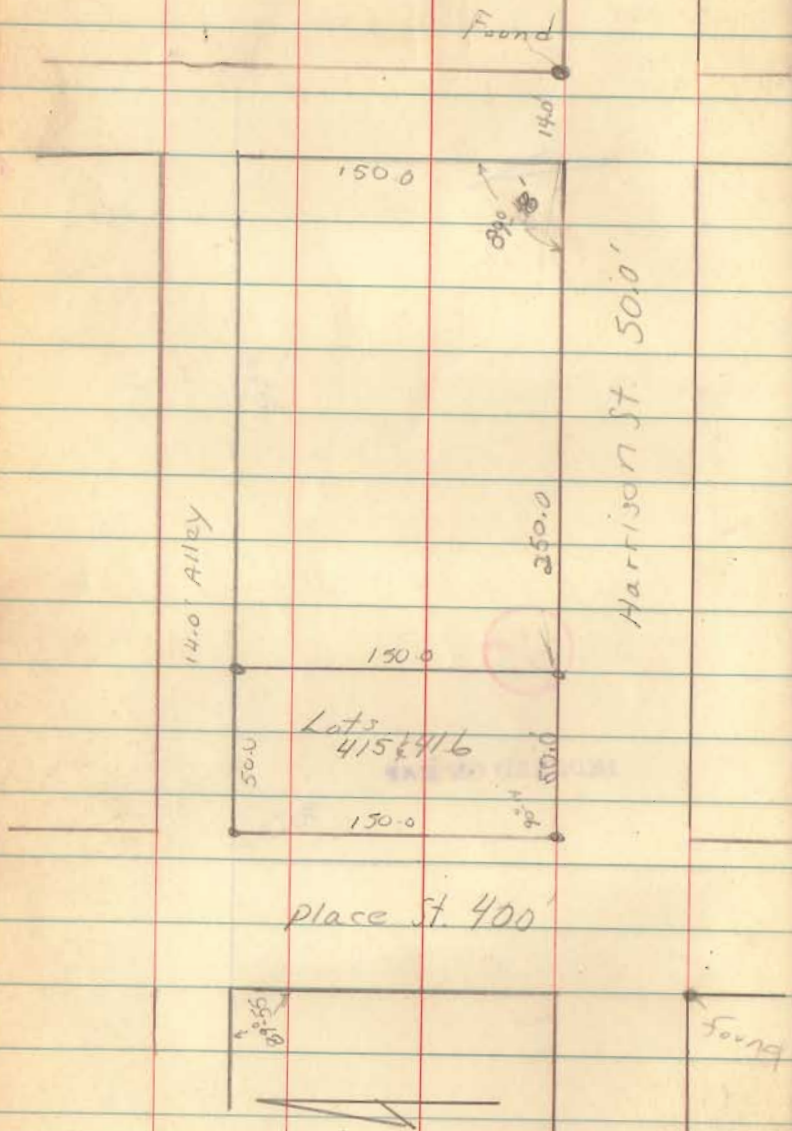


4494

INDEXED ON MAP

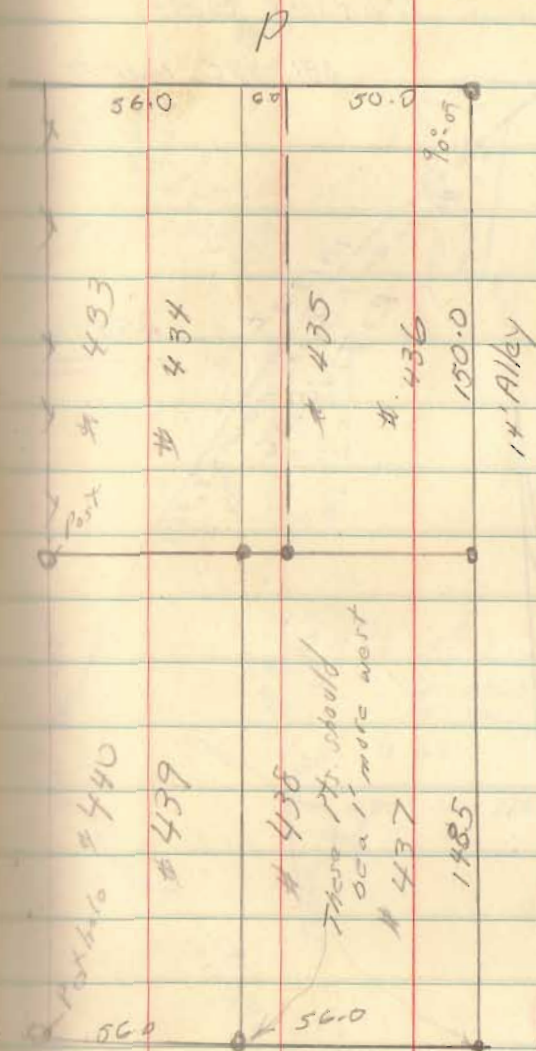


Carmean
Lakeview



June 4, 64

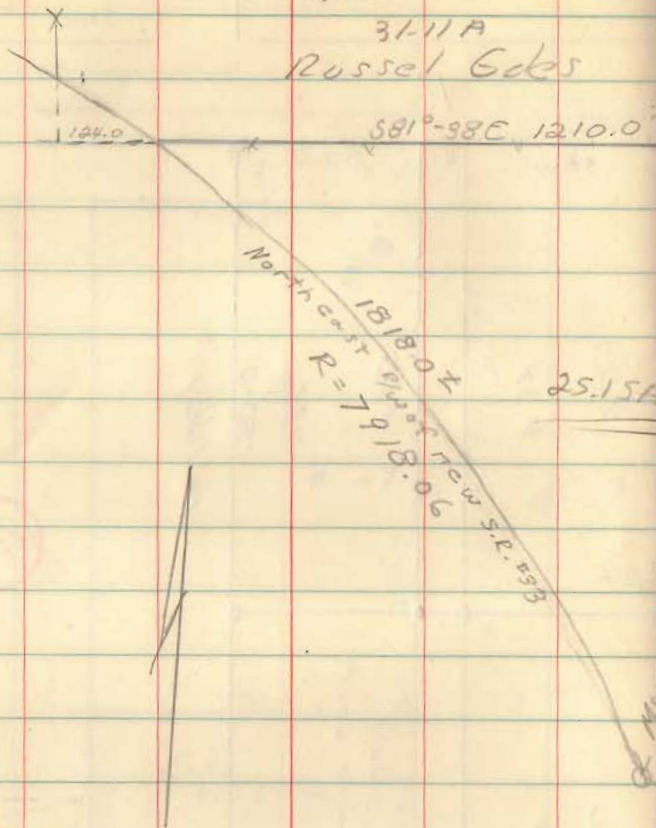
June 19, 64 23



6524

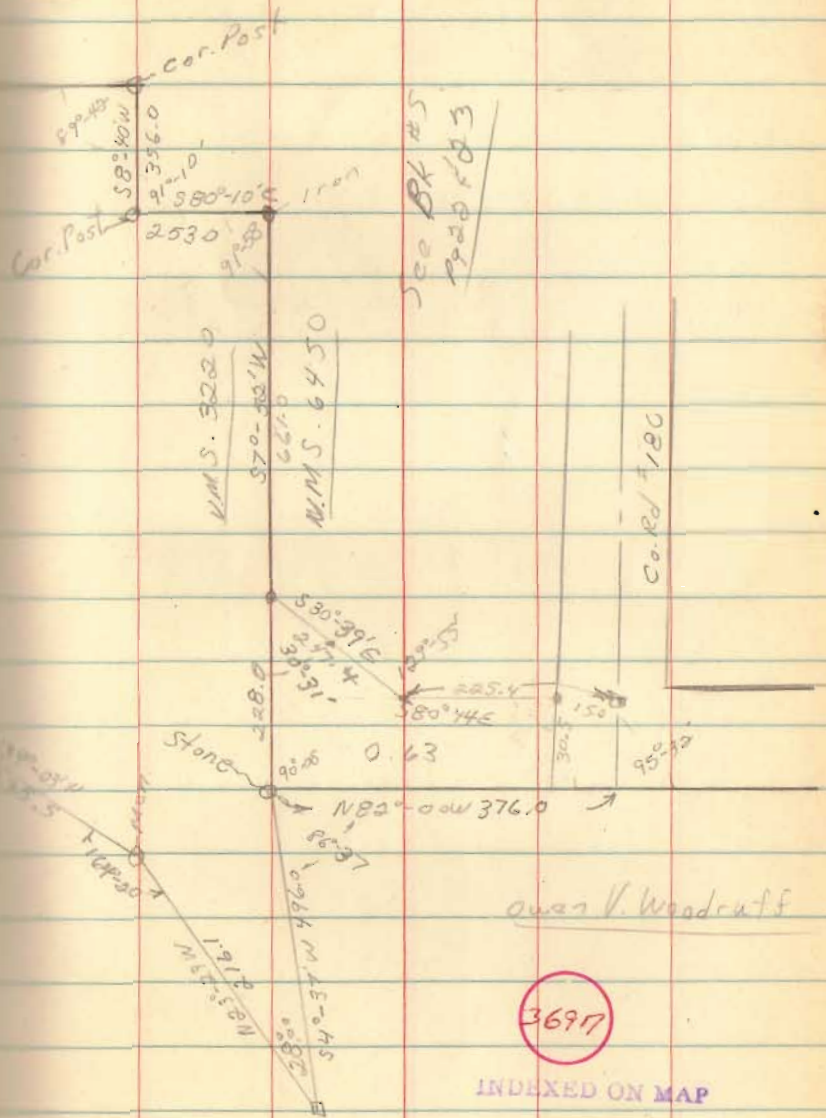
'Stevens'
Jeff. Twp.

3111A
Russel Edes



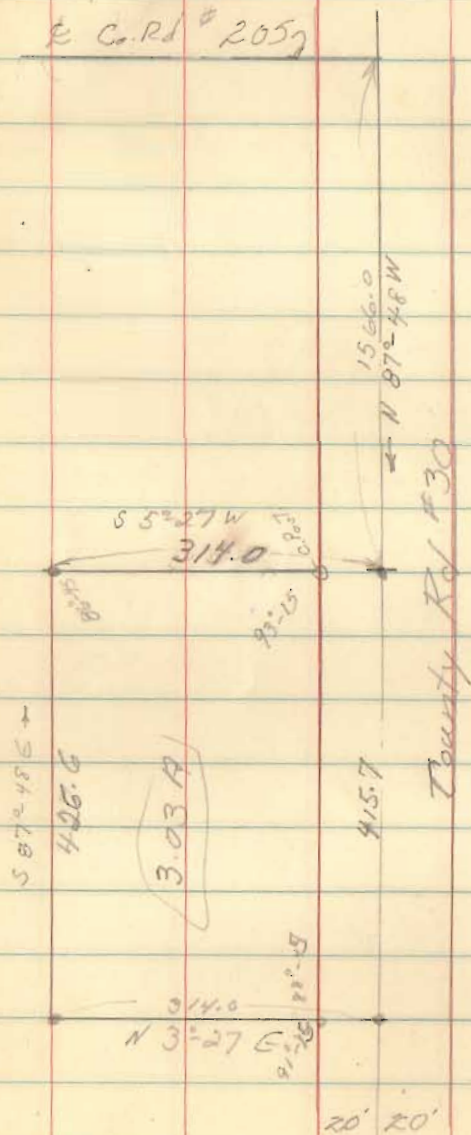
June 8, 64

24



Kreglow to Jones
 Sec 6, T-3, R-13
 Miami Twp.

E.C. Rd # 2057



July, 64

32

37+30
 31+64
 1566.0

305
 9
 314.0

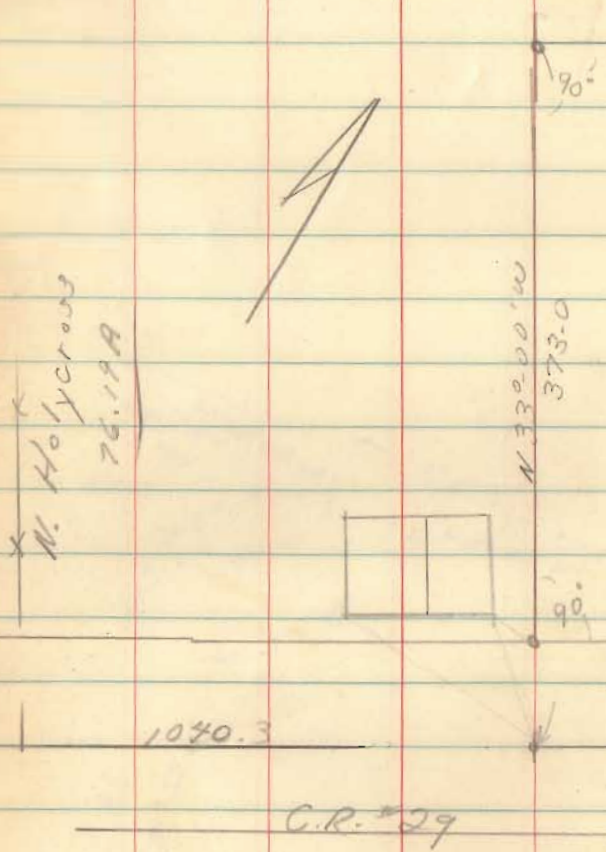
93-15
 87-48
 5-27

41-15
 2748

3-27

PE

Holycross to Shirk
Zane twp.
V.M.S 3753



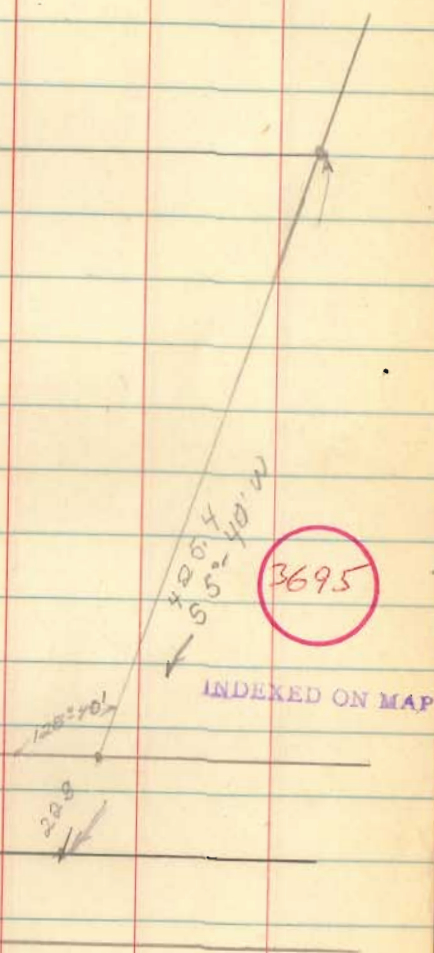
Aug 14, 64

40

N 57°-00' E
783.2

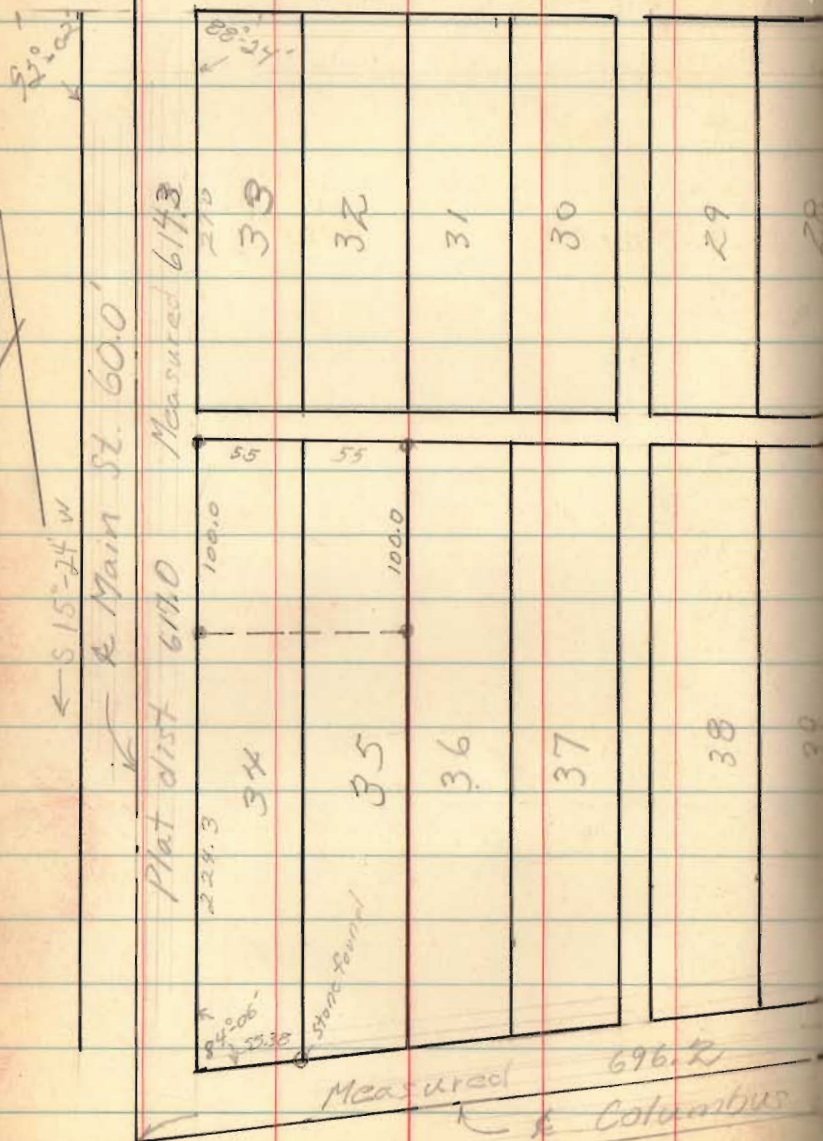
5.00A

435.0
N 57°-00' E



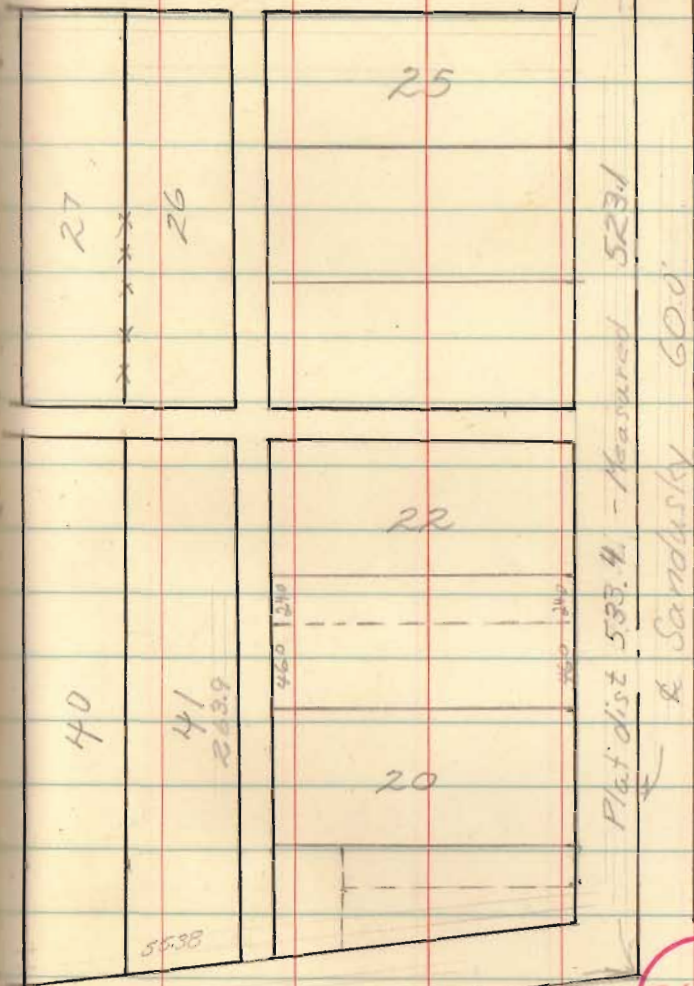
Joe Swisher
Zanestfield

← Bellefontaine St. 60.0'
Plat dist. 692.0



Aug. 20, 67

← Bellefontaine St. 60.0' S73°-00'E →
Measured 701.5



44

SR-24
73
5-24

3698

INDEXED ON MAP

Wilson

Lots 7 & 8 Seminole Subd. "A"

Stakes Twp; V.M.S. 12.276

Curve Data

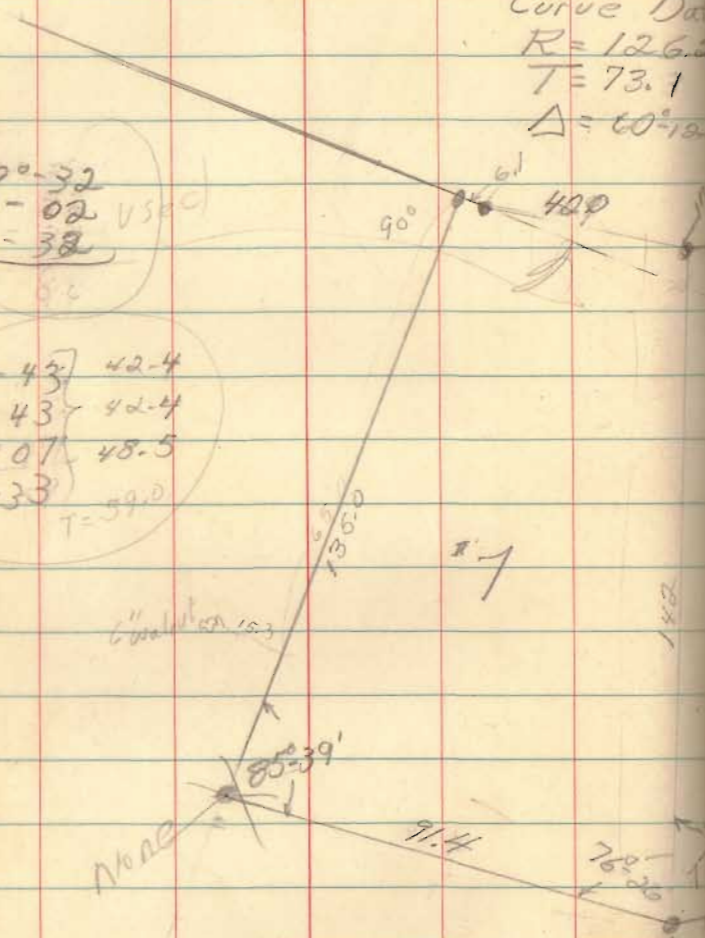
$R = 126.0$

$T = 73.1$

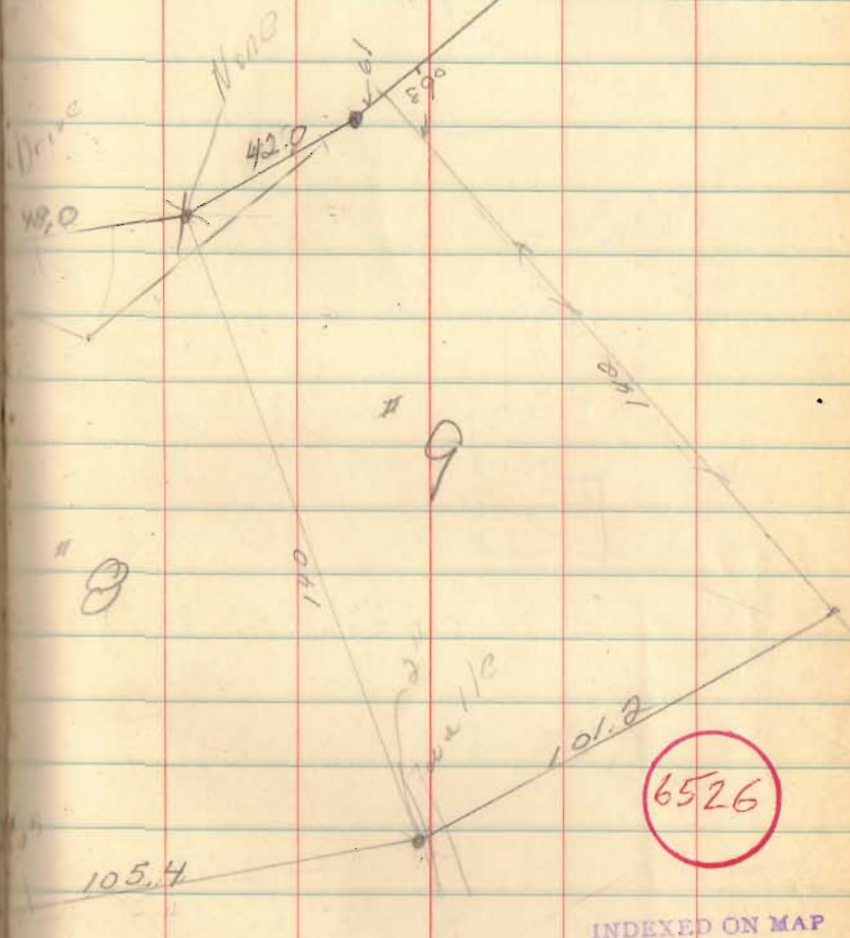
$\Delta = 60^\circ 18'$

9°-32' used
 11-02
 9-38
 30 80

9°-43' 42.4
 9°-43' 42.4
 11-07 48.5
 30-33 T=59.0



47



6526

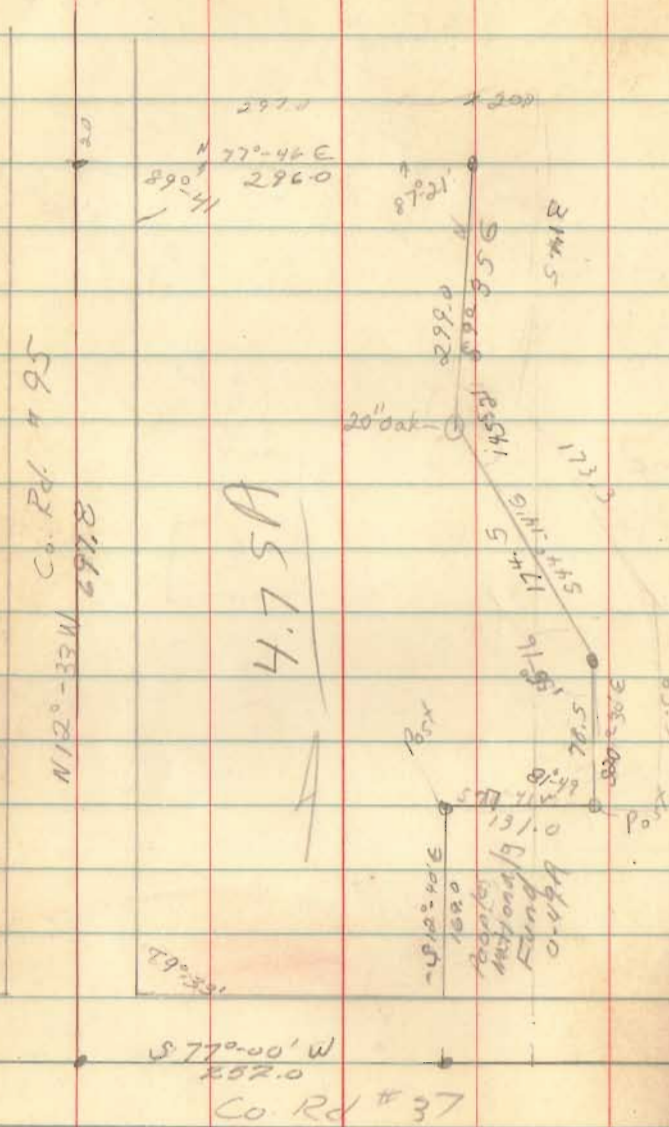
INDEXED ON MAP

98.7	115.5
103.5	120.3
95.8	104.4
<u>298.0</u>	<u>340.2</u>

Wilson Anderson
 V.M.S. 9902
 McArthur Twp

Oct, 64

49



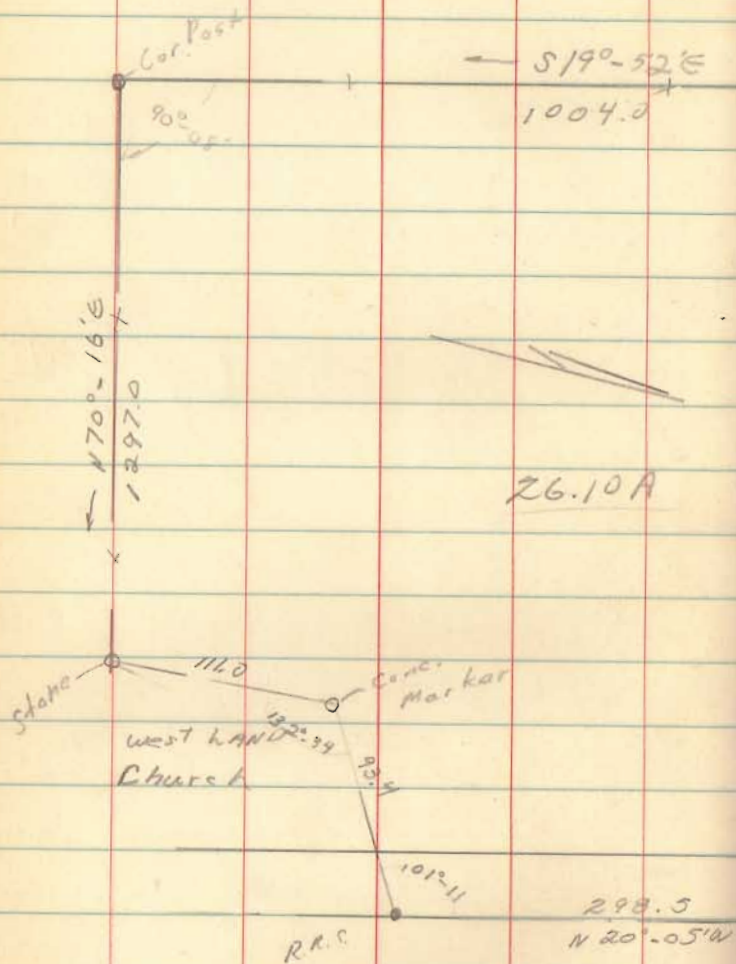
89°-33	79°-50	45-11
89-41	75-41	45-21
87°-21		214-39
214-39	51-09 W	45-14
155-16		230-44
161-38		36-36
100-36		81-49
98-58		19
		79-50
		81-49
		161-39

3720

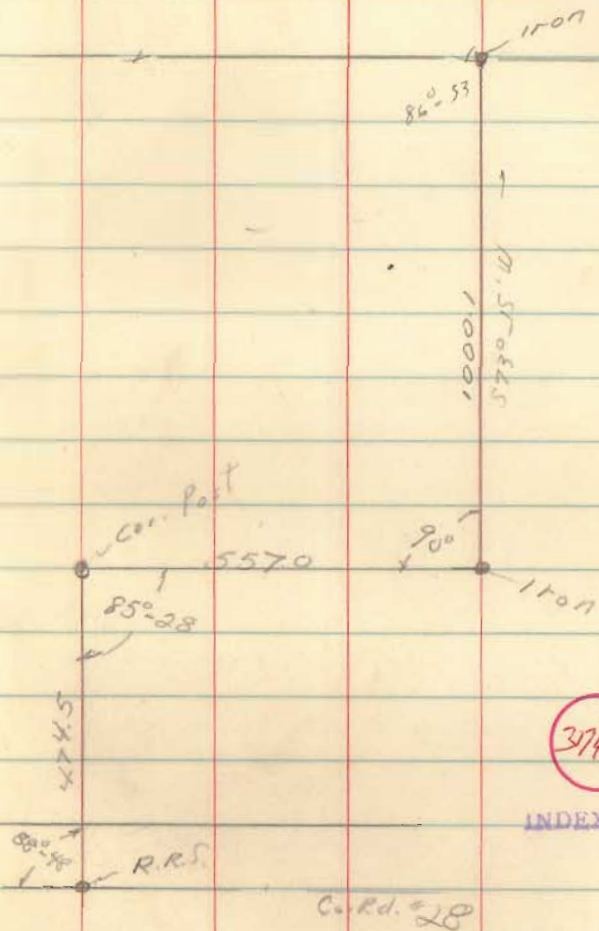
INDEXED ON MAP

180
 900
 19-30
 17-49
 11-19
 78-41

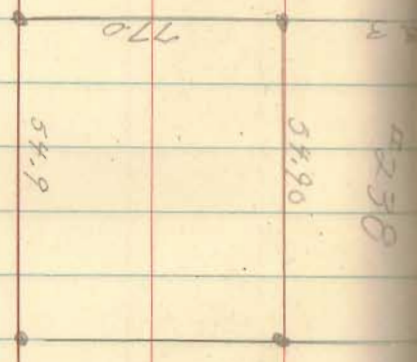
12
Lockwood
V.M.S. 3221
Monroe Top



52
Dec. 22, 64

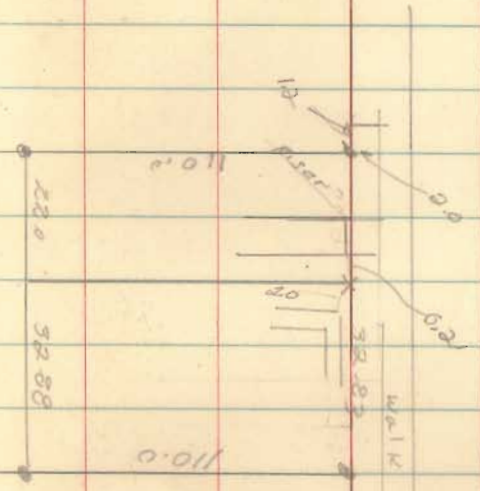


37148
INDEXED ON MAP



2212

INDEXED ON MAP



6245

St. Columbus

Stone

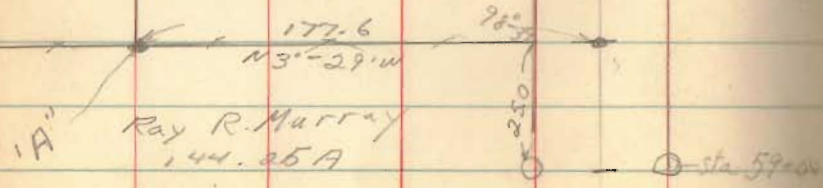
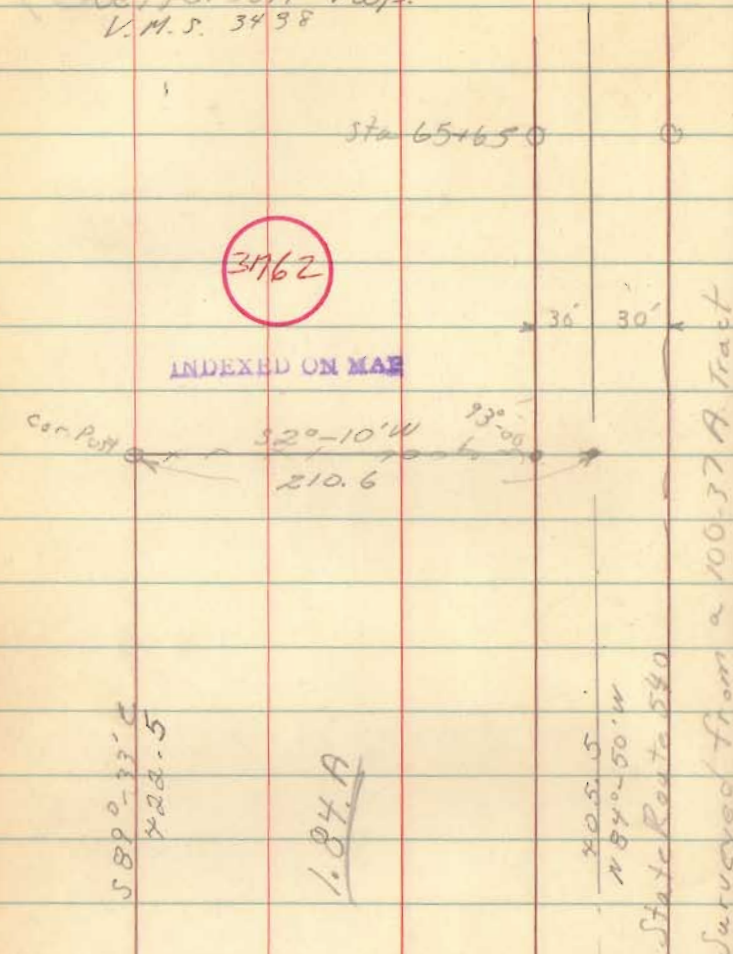
Part

Bellefontaine
City lot 0298

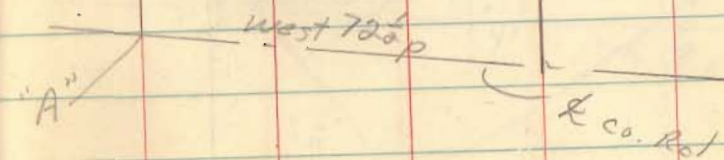
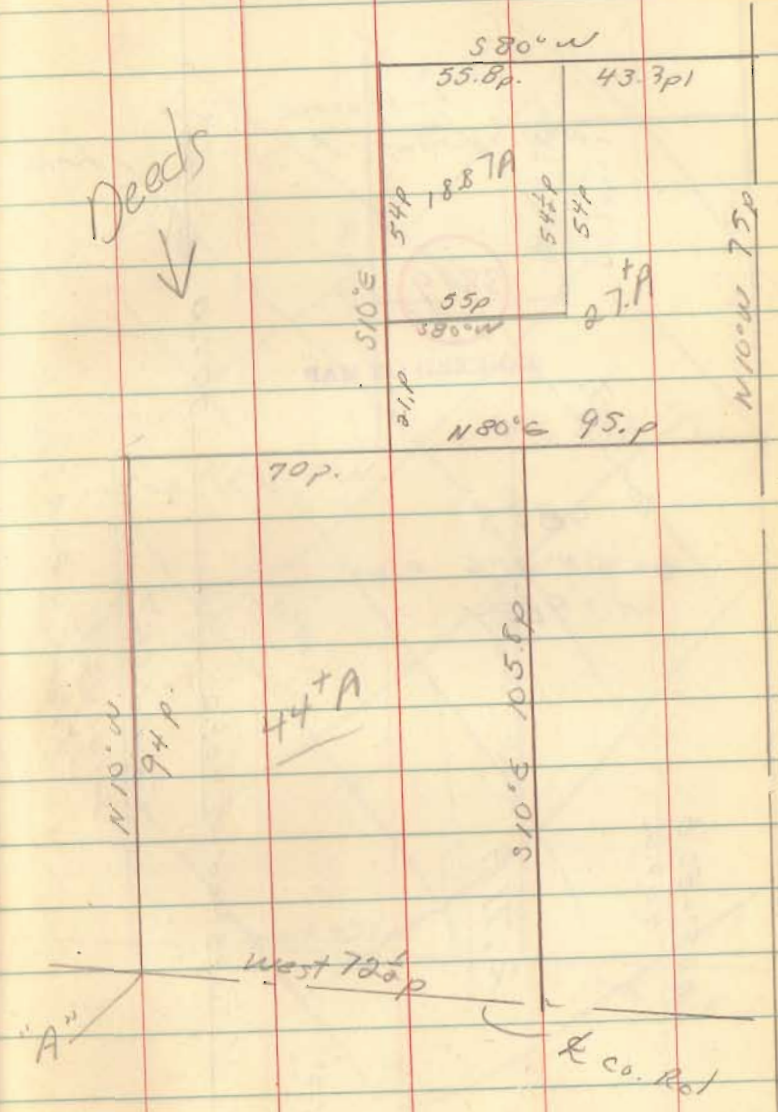
Kirk Survey
 Jefferson Twp.
 V.M.S. 3438

3-20-65

60



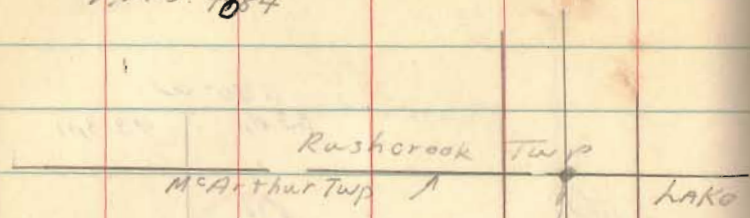
Deeds
 ↓



P. Wish Survey
 McArthur Twp
 V.M.S. 9884

3-20-65

61



3819

INDEXED ON MAP

Co. Rd. 25X

9885

S5°-21'E 286.0

V.M.S. 9884

377.0

20' 20'

89°-29'

Co. Rd. #57
 Surveyed
 from a 20A Track

N85°-50'E
 409.2

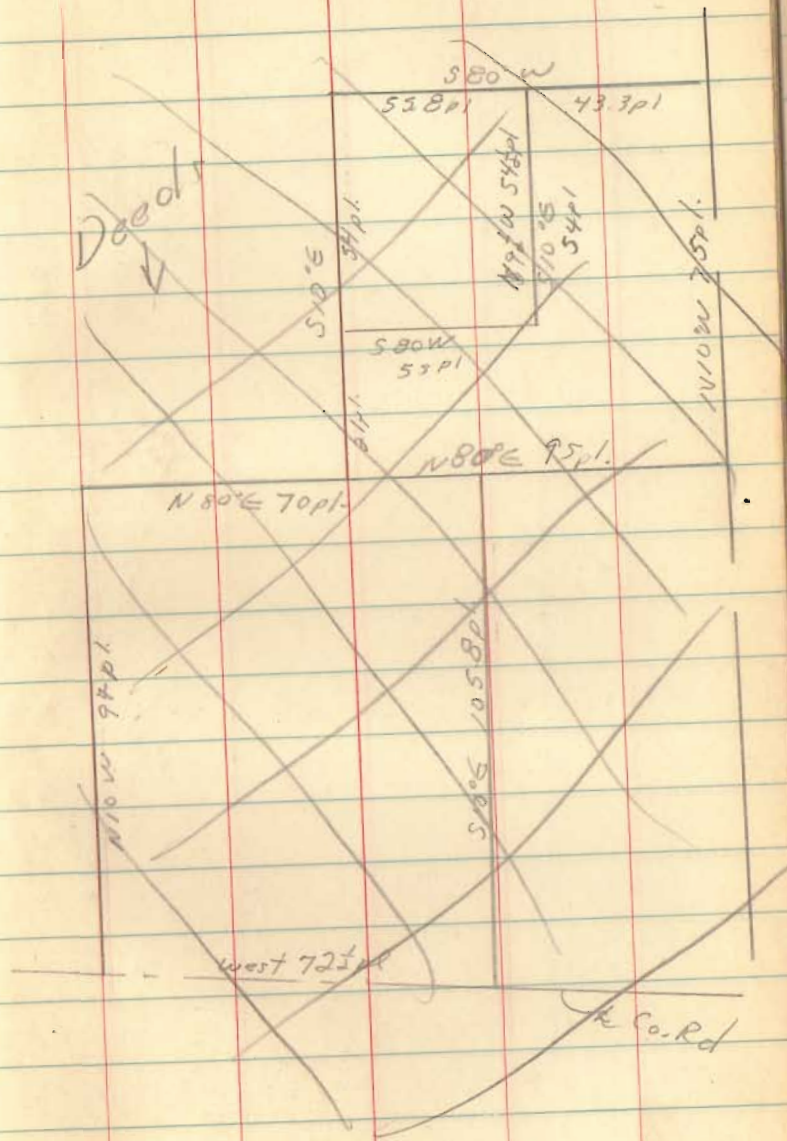
2.71A

S85°-00'W 409.2

90°-21'

N5°-21'W 292.0

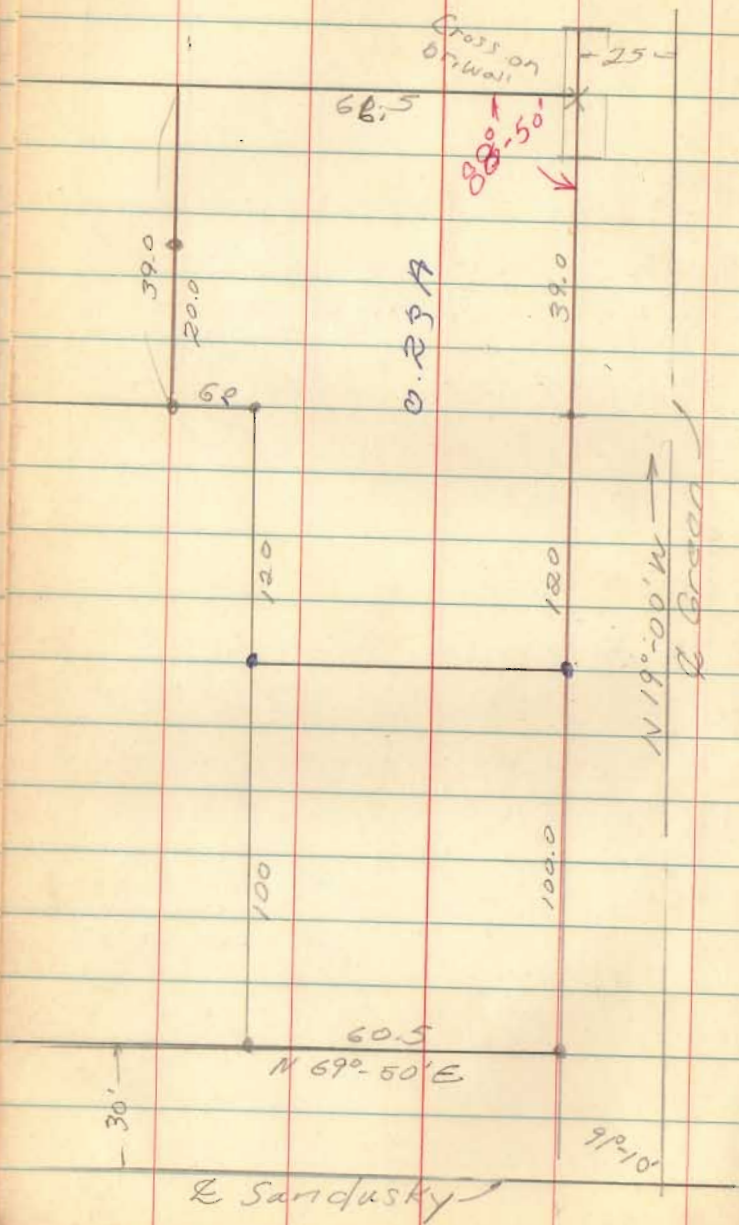
Deed



Humble
Bellevue, O

65'

63



3816

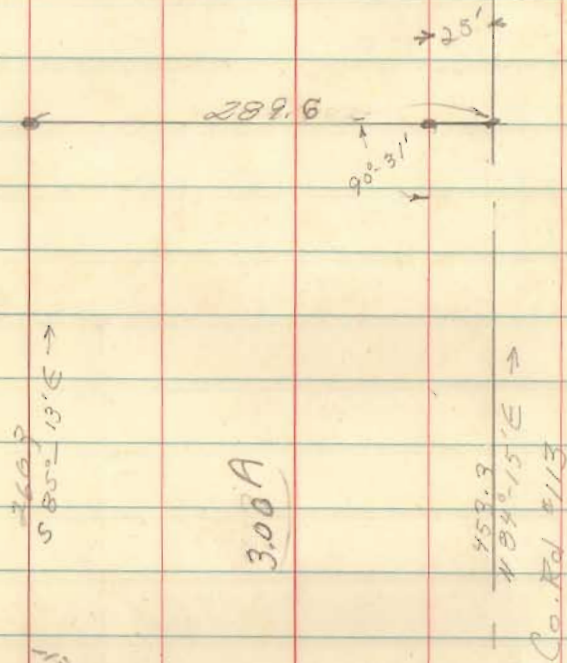
INDEXED ON MAP

HONS SURVEY

#V.M.S. 9933 - RUSH CREEK TWP.

June 2, 65

65



3821

INDEXED ON MAP

133-25
46-35

1312-48
46-55

185-13

453.3

162.4

290.9

55

41714.7

1385.3

290.9

1094.4

Haws Survey
Harrison Twp.
19-2-15

June 8, 65

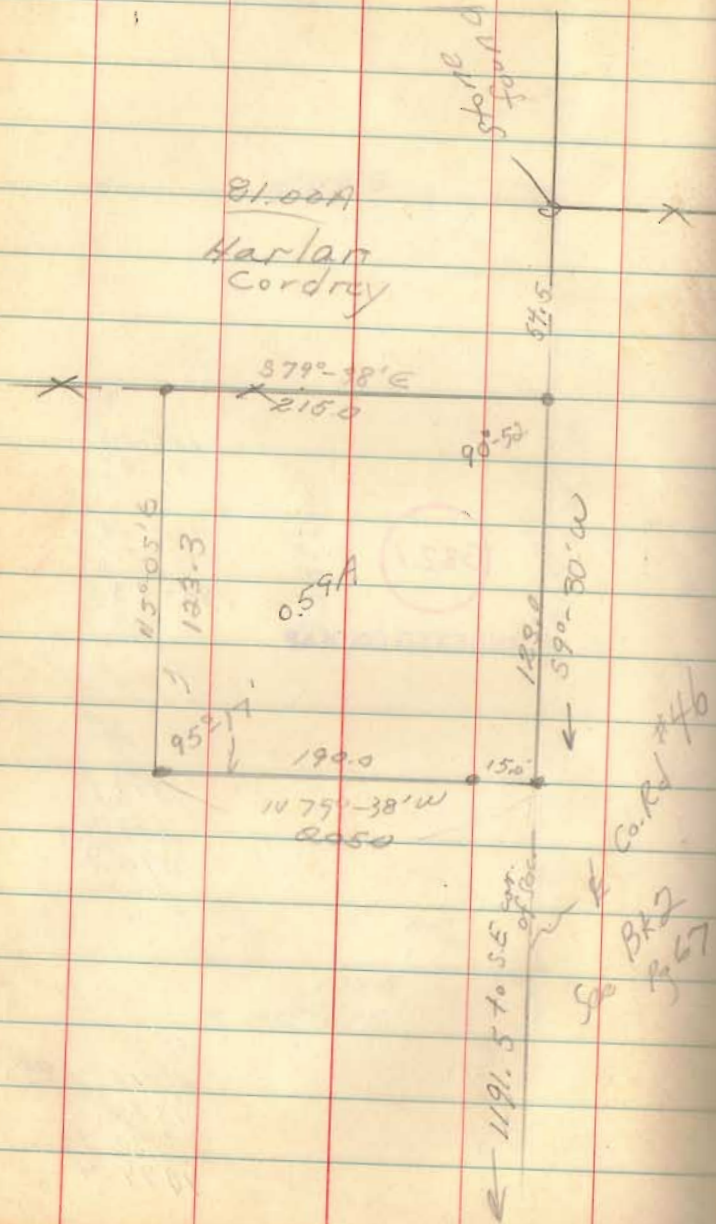
66

368
233
713.5

1314.5
129

1191.5

Wagner



3813

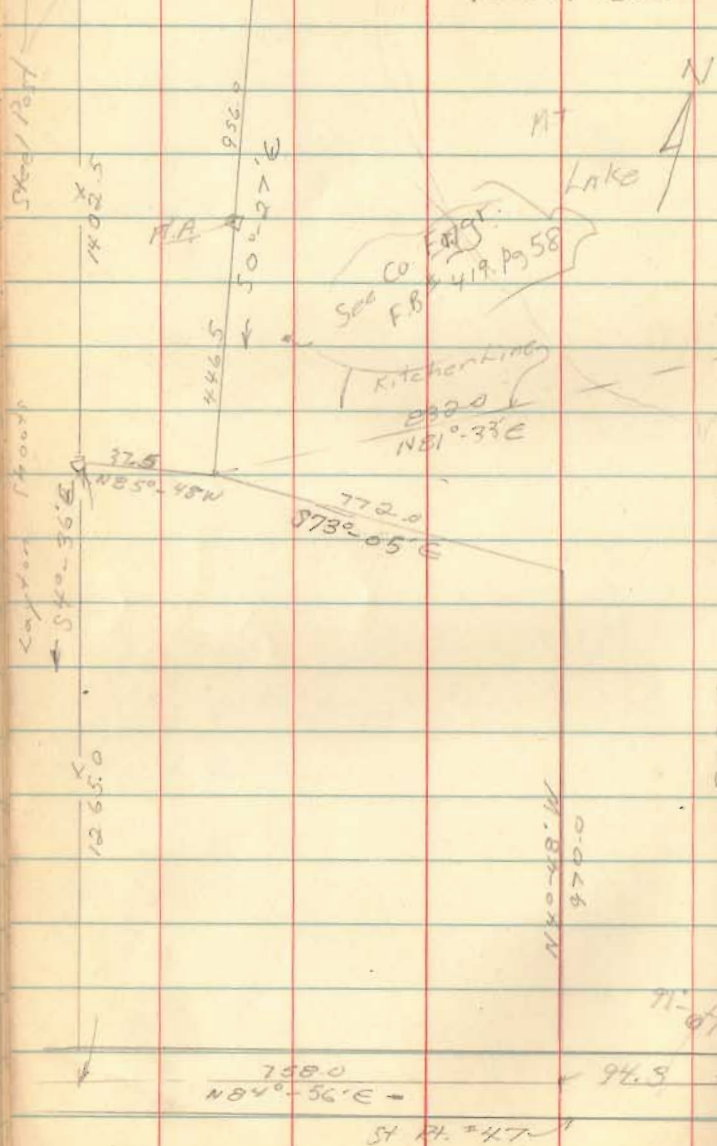
INDEXED ON MAP

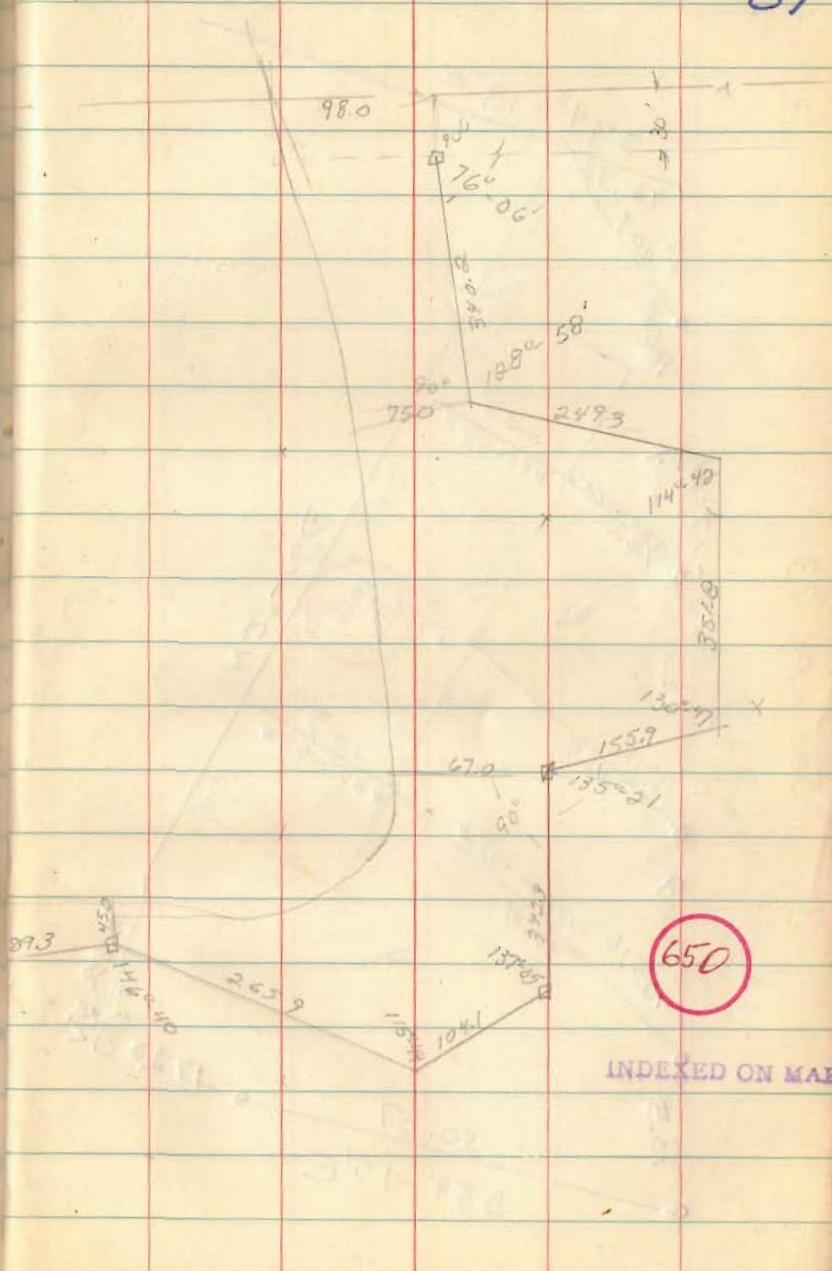
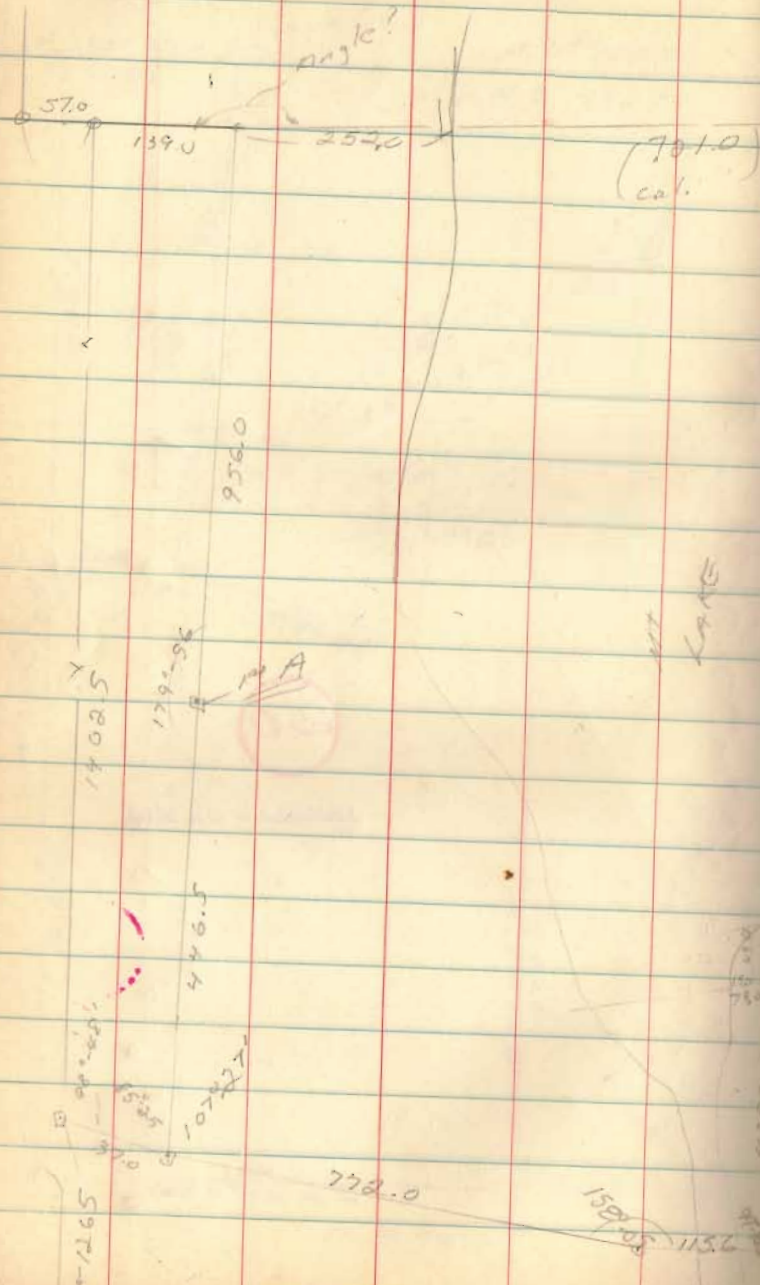
Petersime
Left. & Pushcreek Twp.

July, 1965

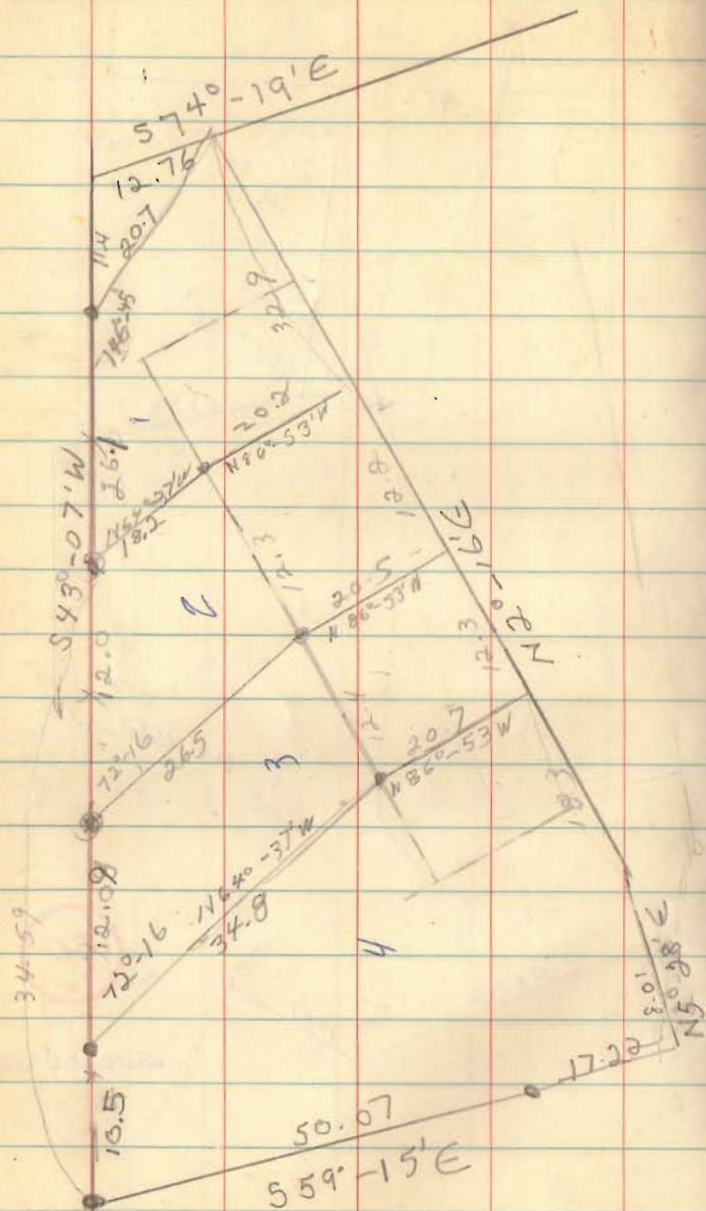
68

570 N89°17'E =
139.0
U.M.S. #9923
V.M.S. 3327



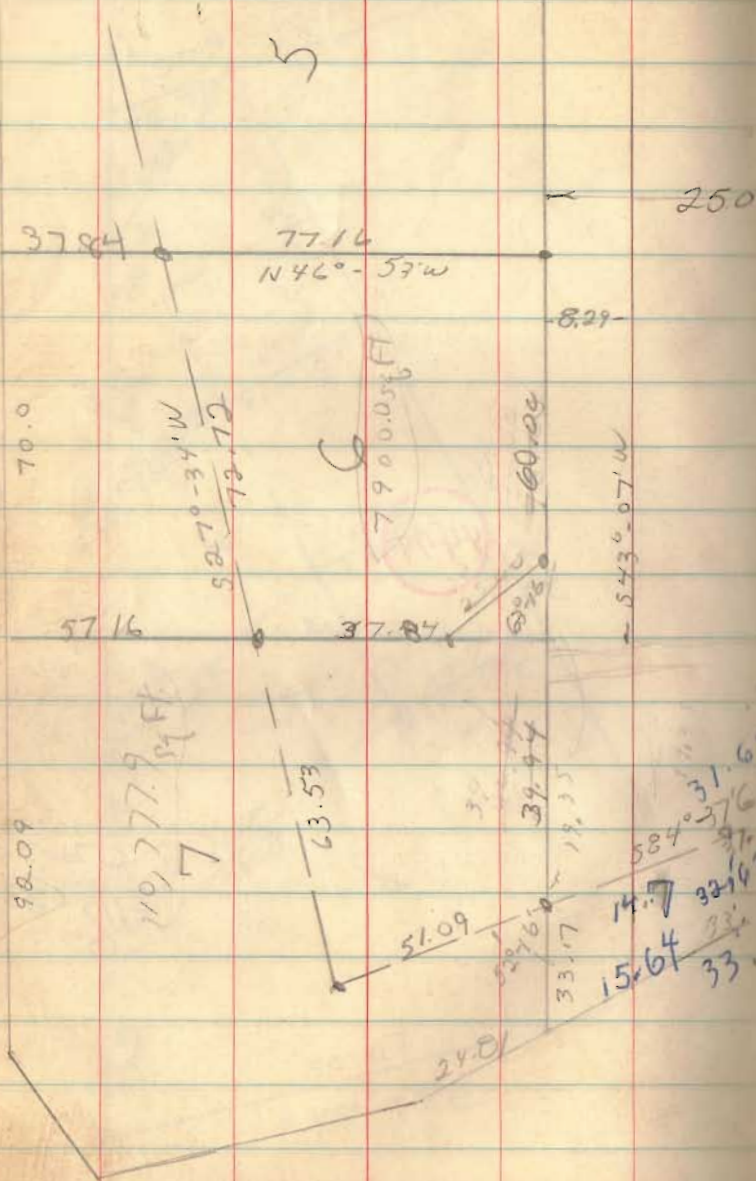


See pg 73



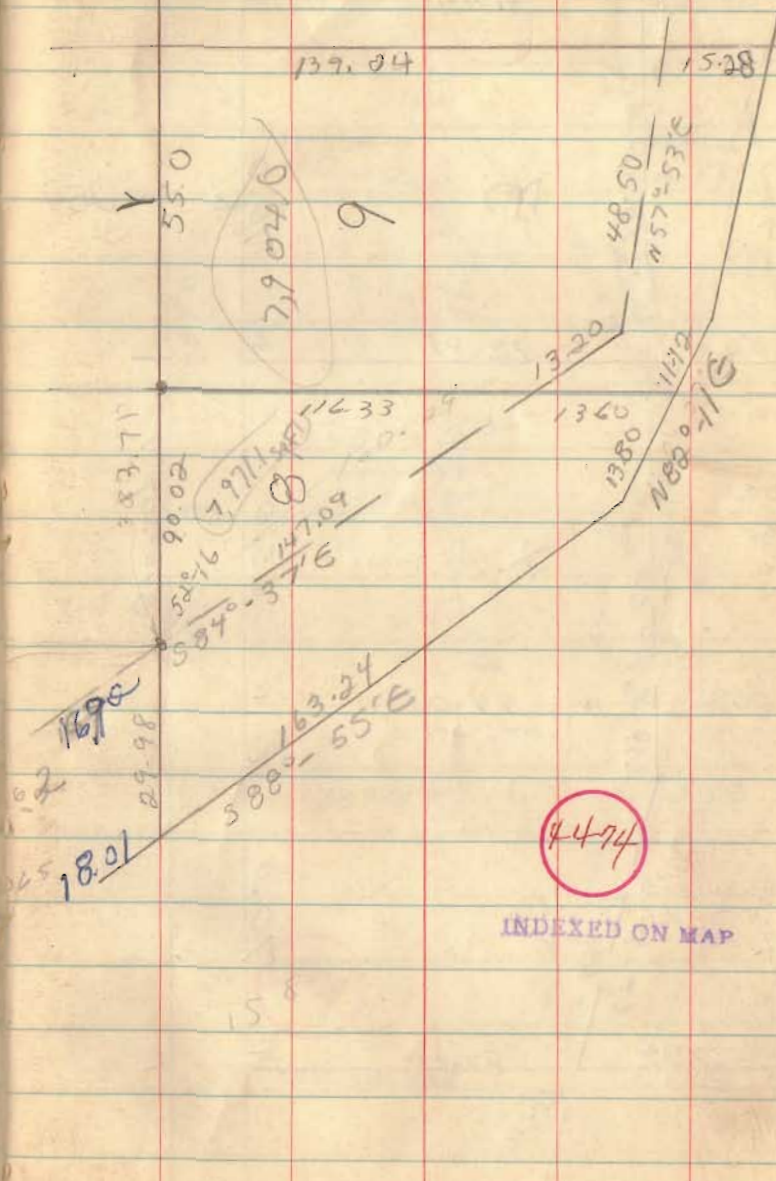
43°-07
 50
 93 07
 86-53

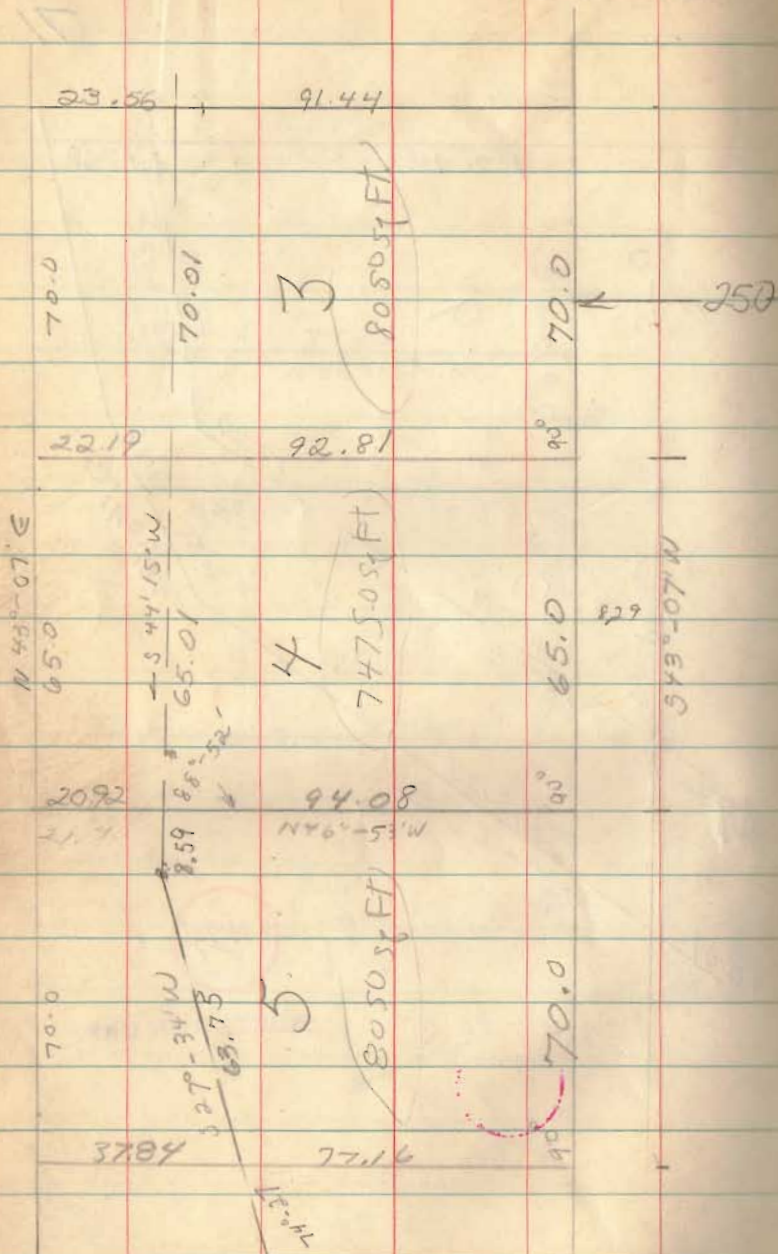
43°-07
 72-16
 115-23
 64°-



Jan., 1966

71





4474

INDEXED ON MAP

50.0 55.0

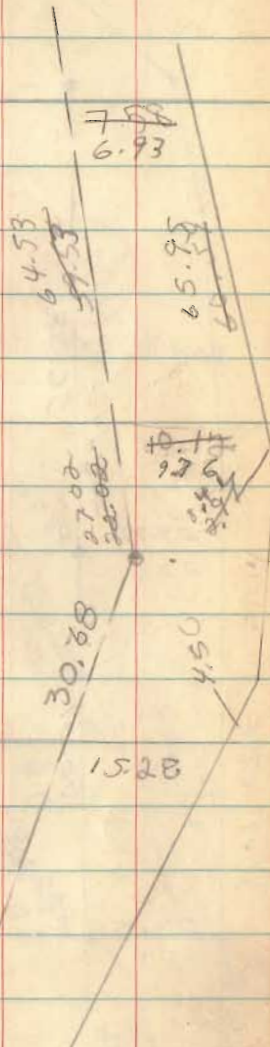
7601.92 FT
548°-49' E
138.84
136.51

139.04

7466.52 FT
1125.5
120.5
102

10

11



30.68

15.28

4.50

7.88
6.93

64.53
~~67.53~~

65.85
~~68.85~~

7.88
~~9.88~~

72

23.56

91.44

70.0

70.01

3

8050.57 FT

22.19

92.81

70.0

250

N 43° 07' E
65.0

S 44° 15' W
65.01

4

7475.05 FT

20.92

8.59

94.08

65.0

29

S 43° 07' N

70.0

S 27° 34' W
65.75

5

8050.57 FT

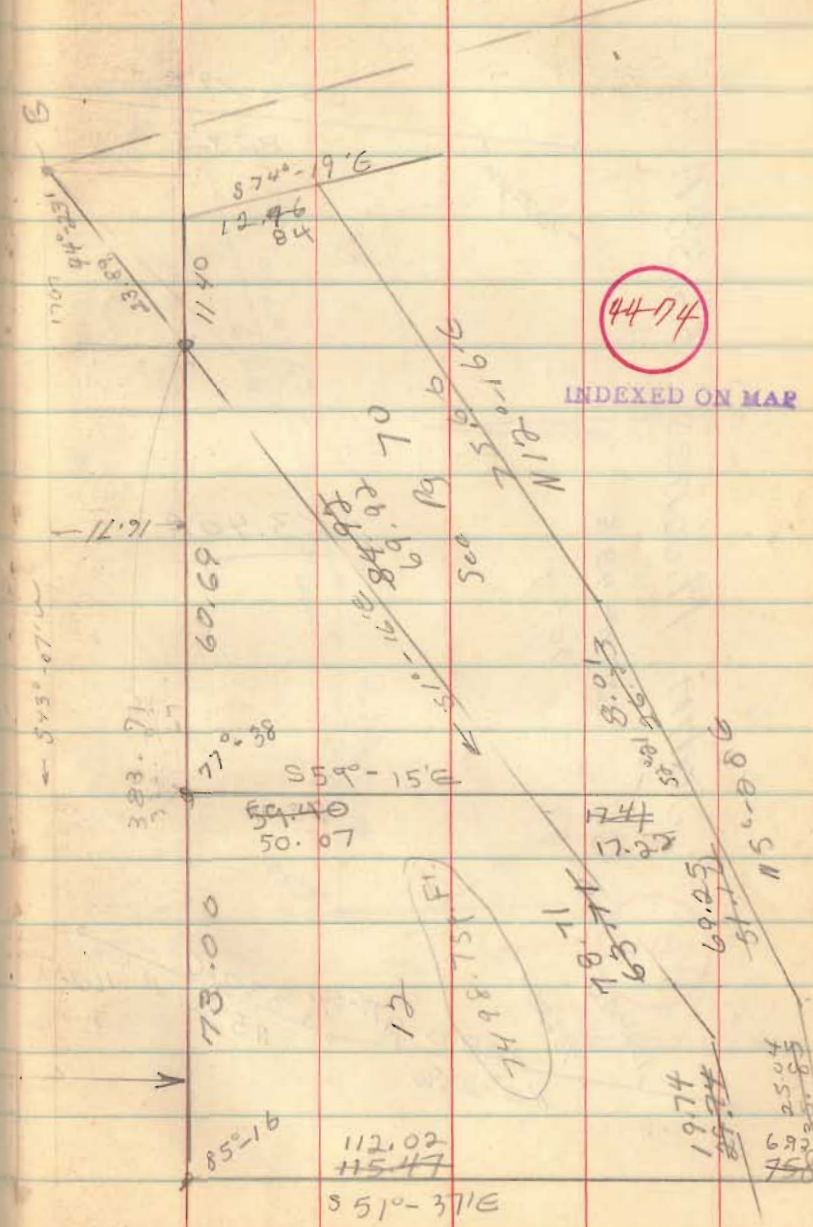
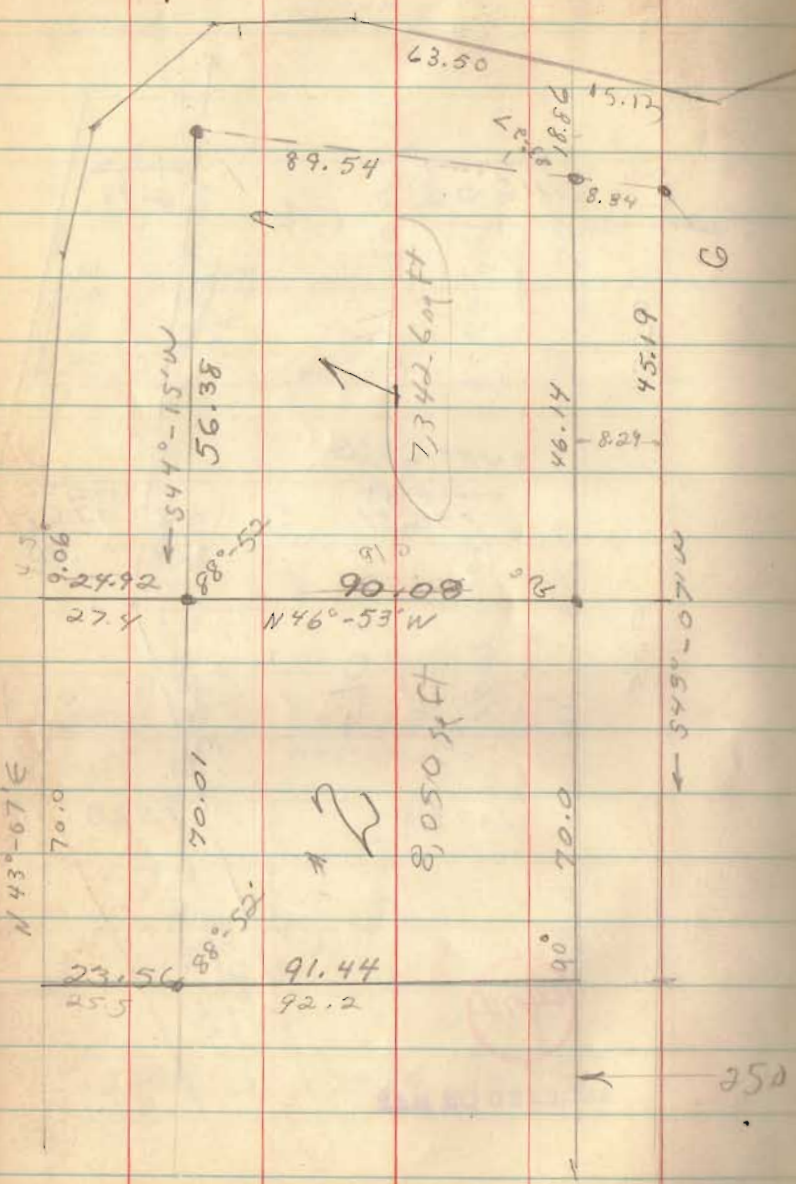
37.84

77.16

70.0

29.74
32.3
151.70
59.57

3



GANTZ Survey
V.M. 3. 12099
Monroe Twp

Sept. 63

74

JOHN M. JONES 56.38A

S 78° 48' E
905.0

1072.44

S 6° 29' E

824.5

23.40A

102° 03'

78° 25'

N 0° 23' W

328.0

174° 59'

N 5° 24' W

330.6

166° 17'

533.5
N 8° 19' E

95° 35'

418.0

N 76° 06' W

683.7

S 64° 47' W

108° 44'

APPARENT 2 OF T.R. 166

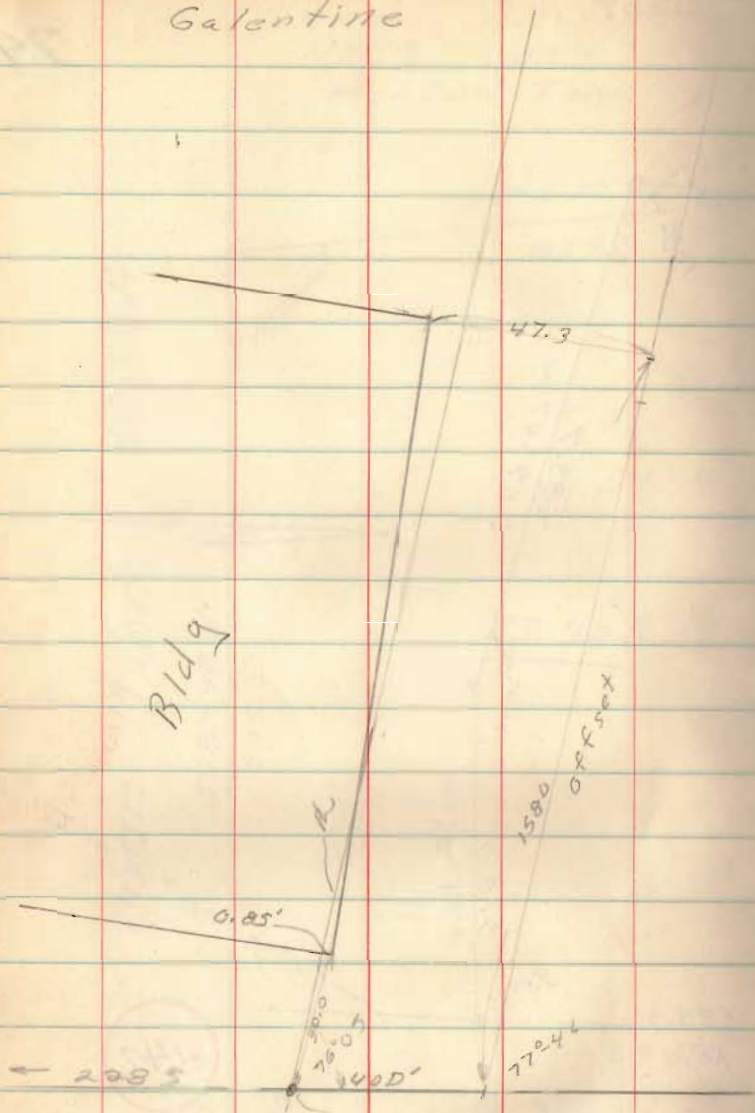
3142

INDEXED ON MAP

Galentine

Oct. 5, 19

75

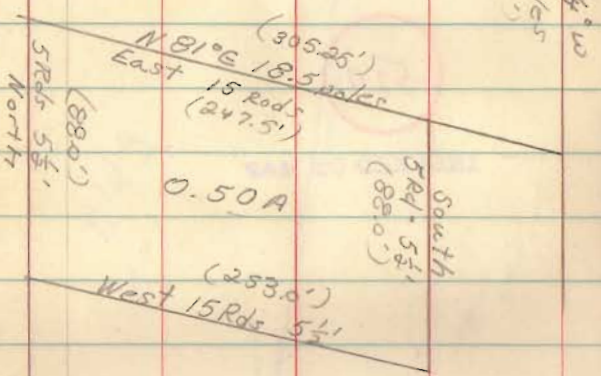
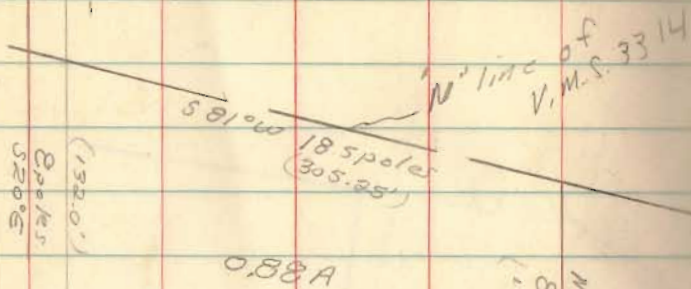


6527

INDEXED ON MAP

S.W. Corner
OF E. Wilgus
138A Tract

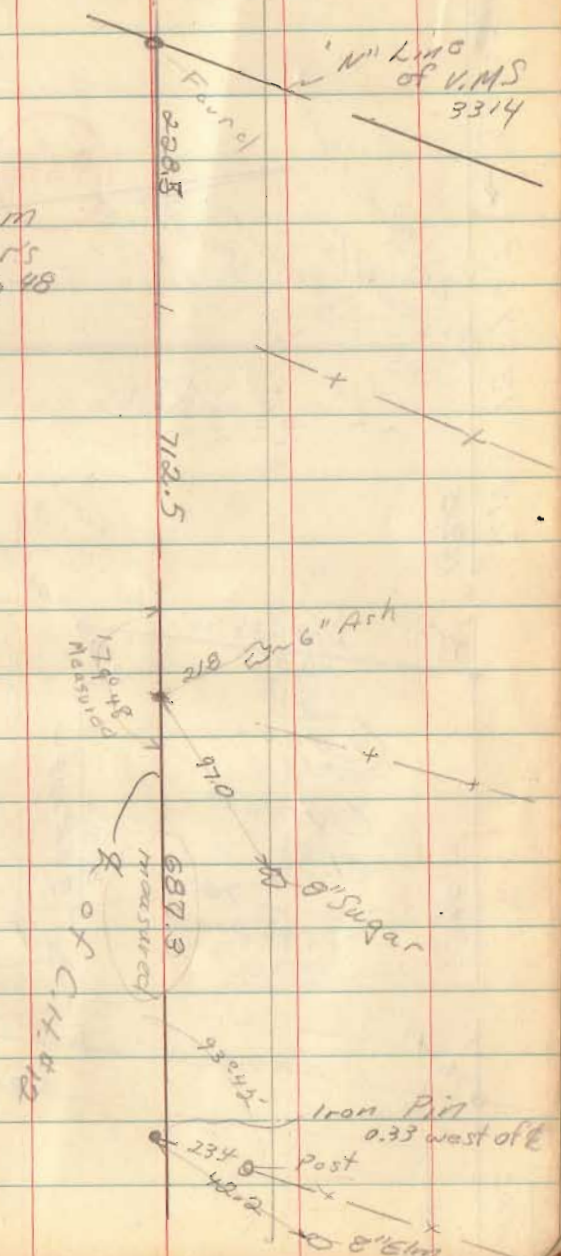
Elba Wilgus' deeds



65217

INDEXED ON MAE

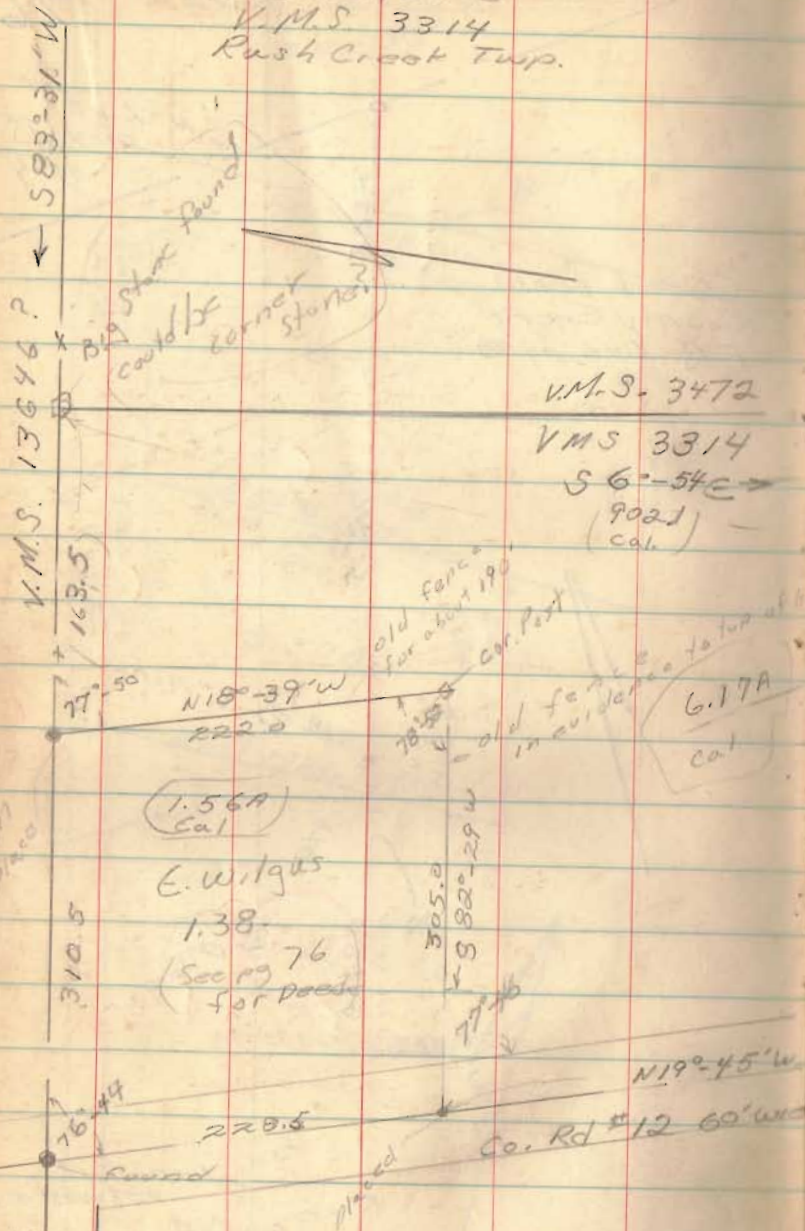
Copied from County Engr's F.B. 646, pg 48



T. Gallentine
 V.M.S. 3314
 Rush Creek Twp.

Oct., 63

77



6527

INDEXED ON MAP

