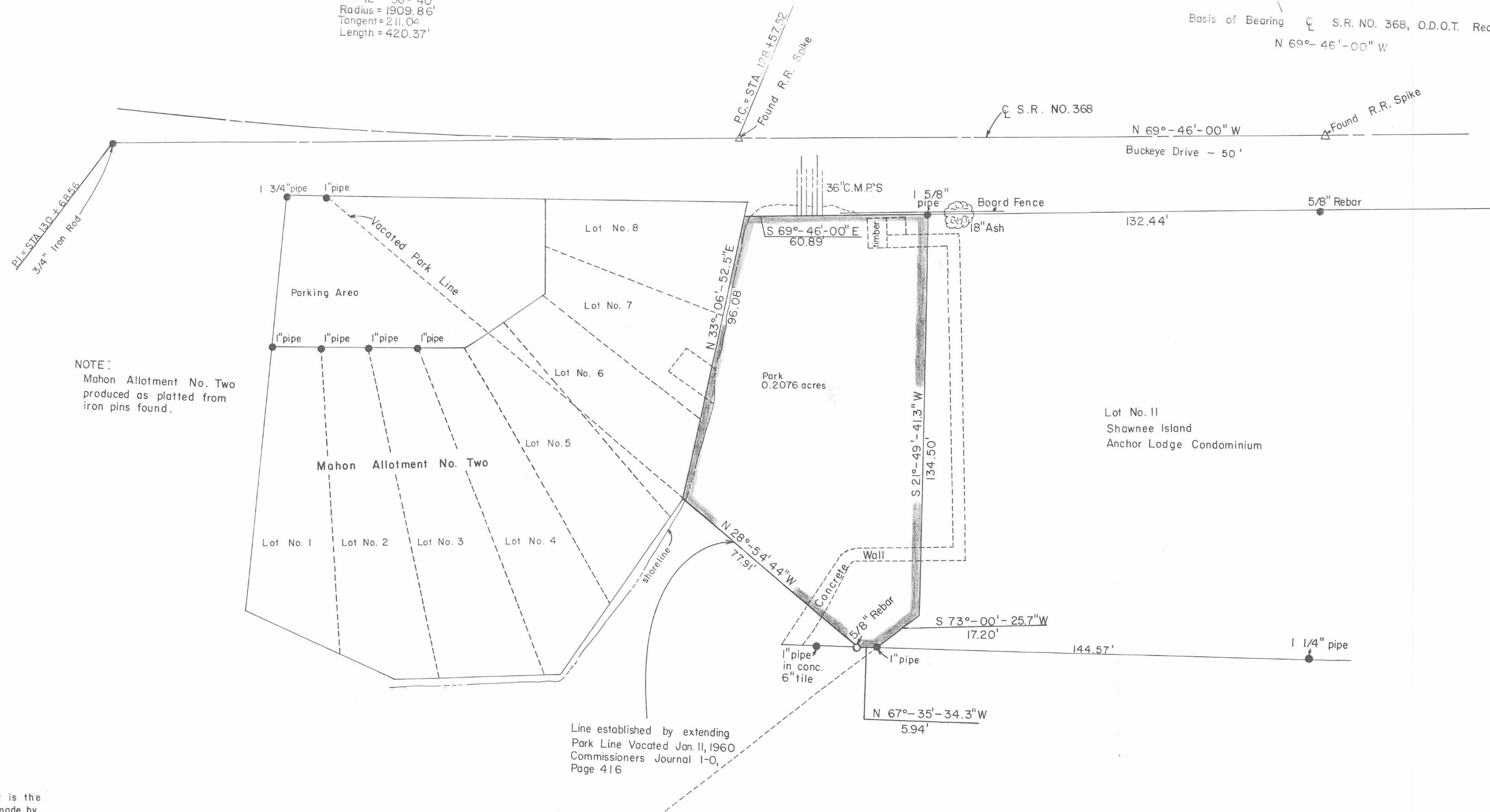


PUBLIC PARK BETWEEN SHAWNEE ISLAND AND SEMINOLE ISLAND  
 STOKES TOWNSHIP  
 LOGAN COUNTY, OHIO 1988  
 VIRGINIA MILITARY SURVEY NO. 12276

Curve Data  
 $\angle = 12^{\circ}-36'-40''$   
 Radius = 1909.86'  
 Tangent = 211.04'  
 Length = 420.37'

Basis of Bearing  $\angle$  S.R. NO. 368, O.D.O.T. Records  
 $N 69^{\circ}-46'-00'' W$



I hereby certify this plat is the result of a field survey made by the Logan County Engineer on September 2, 1987.  
*Chester R. Kurtz*  
 Chester R. Kurtz, P.E., P.S.  
 Logan County Engineer  
 Ohio Professional Surveyor No. 4849