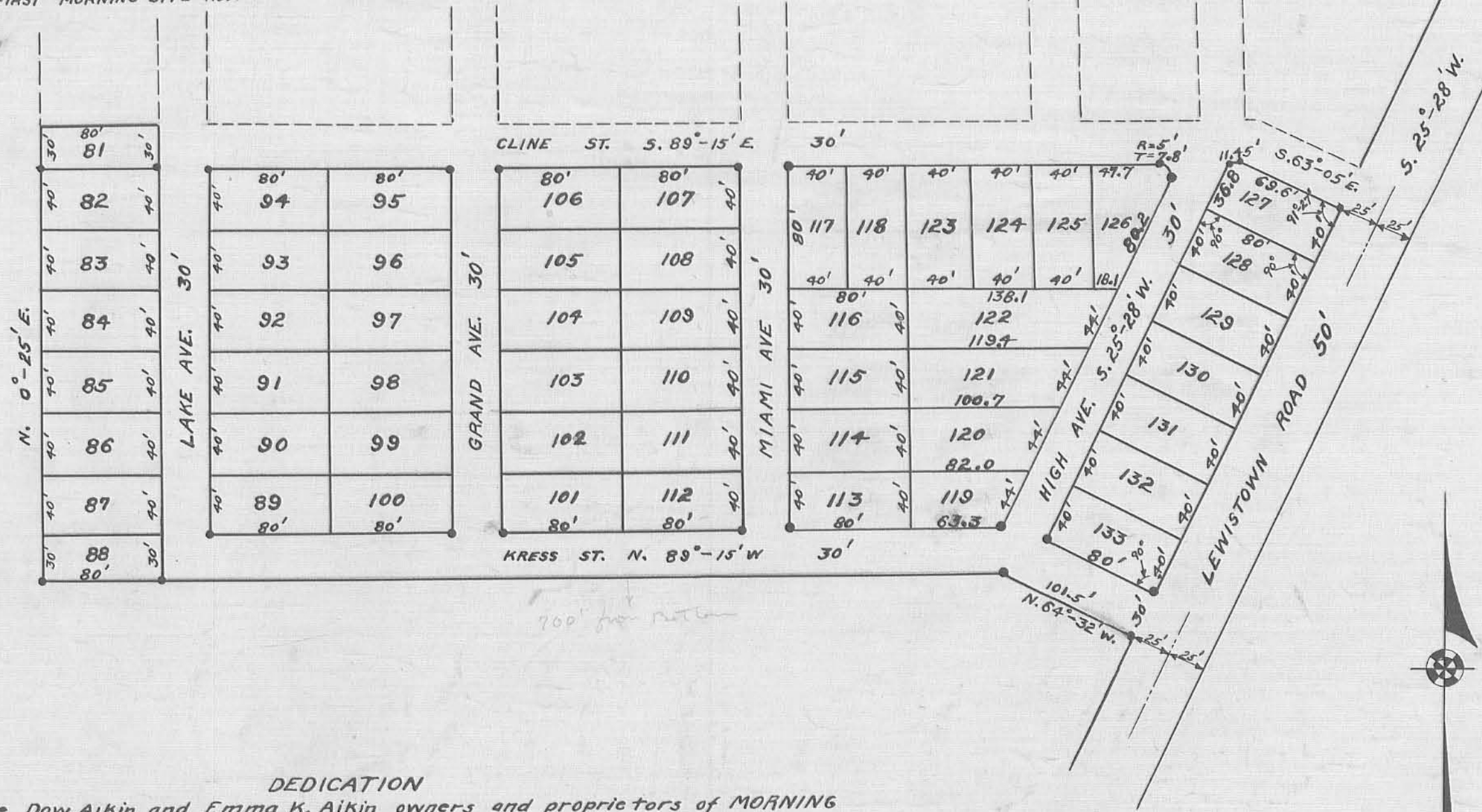


NOTE: ALL OF CLINE STREET IS IN THE FIRST MORNING SITE ADDITION



Approved, Aug. 25-26

J. P. Core  
County Engineer.

Approved, Aug. 25, 1926

J. B. Hoover  
W. H. Mason  
County Commissioners.

Transferred, August 25<sup>th</sup> 1926

N. W. Corbett  
County Auditor.

Received for Record AUG. 25 - 1926

Recorded

In Plat Book C Page 20  
Sam. H. Carter  
County Recorder.

**DEDICATION**

We Dow Aikin and Emma K. Aikin owners and proprietors of MORNING SITE ADDITION NO. TWO TO RUSSELL'S POINT do hereby acknowledge the accompanying plat and explanations to be a correct exhibit of MORNING SITE ADDITION NO. TWO TO RUSSELL'S POINT. The streets thereon shown are dedicated as public highways.

In Testimony whereof we have hereunto set our hands this 24<sup>th</sup> day of August A.D. 1926.

Executed in the presence of  
John P. Aikin  
Opal Bishop

Signed, Dow Aikin  
Signed, Emma K. Aikin

**SURVEYOR'S CERTIFICATE**

The accompanying plat represents a subdivision of land in the township of Washington; County of Logan and is a part of Section 1, Town 7, Range 8, which subdivision is hereafter to be known as MORNING SITE ADDITION NO. TWO TO RUSSELL'S POINT.

The tract laid out and platted has an area of 5.25 acres. Distances are shown in feet and tenths. The width of streets are as shown. The bearings of lines are given  
● Indicates iron pins.

F. F. Wright  
Civil Engineer.

STATE OF OHIO  
COUNTY OF LOGAN

Be it remembered that on this 24 day of August A.D. 1926 before me a NOTARY PUBLIC in and for the County of Logan, personally appeared the above named Dow Aikin and Emma K. Aikin, owners and proprietors of MORNING SITE ADDITION NO. TWO TO RUSSELL'S POINT and acknowledged the signing of the foregoing instrument to be their free act and deed for the uses and purposes therein named. In testimony whereof we have hereunto set our hands on this day and year last named above.



John P. Aikin  
Notary Public.

MORNING SITE ADDITION NO. TWO

TO

RUSSELL'S POINT

ONE INCH EQUALS EIGHTY FEET

1926