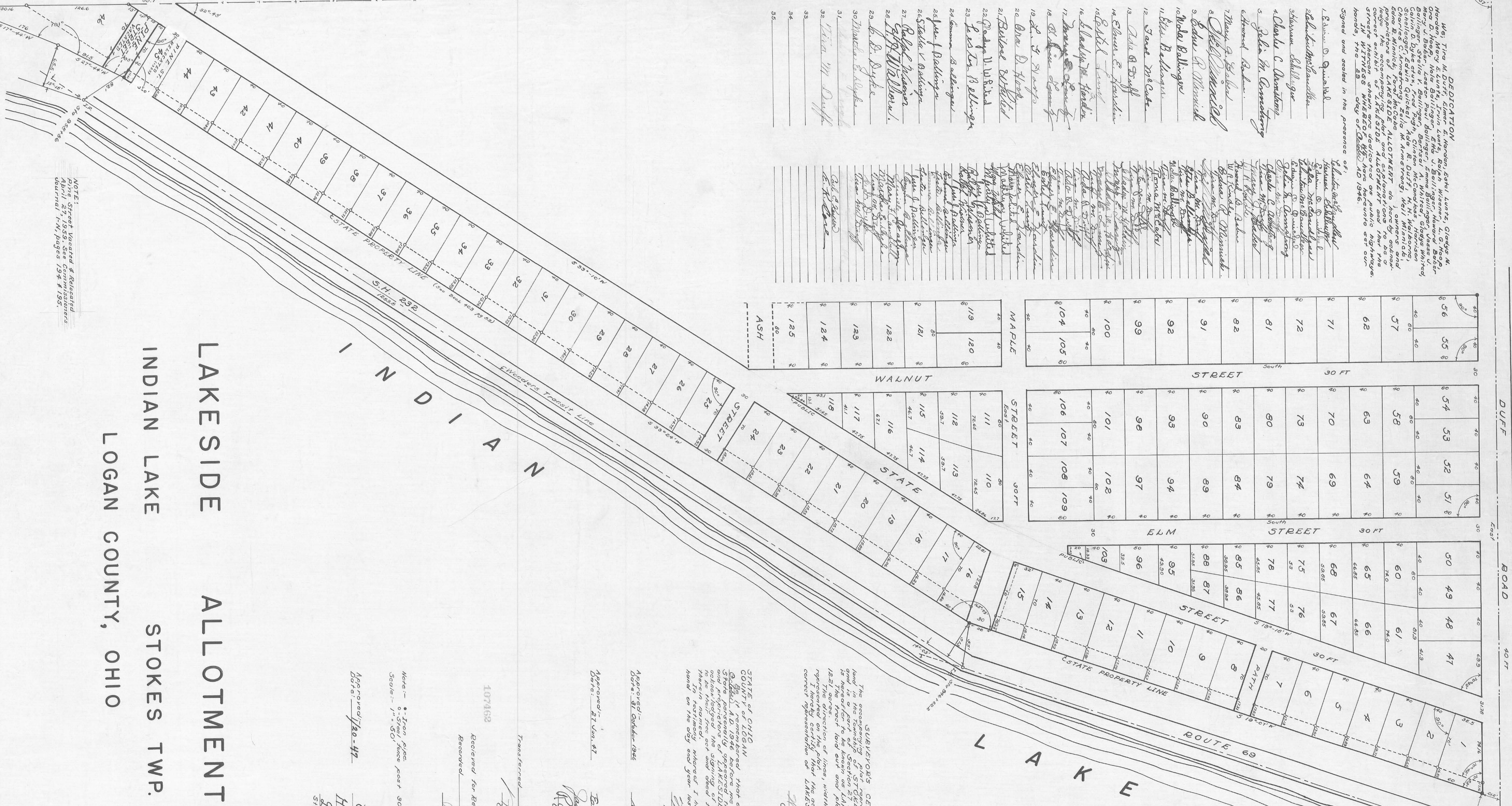


DEDICATION
 We, the undersigned, do hereby dedicate to the public use of the State of Ohio, the lands hereinafter described, and the streets therein shown on the plat hereof, and the same shall be a part of the public domain of the State of Ohio, and the same shall be held for the use of the public, and the same shall be subject to the same laws and regulations as other public lands of the State of Ohio.
 Signed and sealed in the presence of:

1. Edward D. Quivell
2. John W. Anderson
3. Thomas J. Kelly
4. Charles C. Anderson
5. John W. Anderson
6. Edward D. Quivell
7. Thomas J. Kelly
8. Charles C. Anderson
9. John W. Anderson
10. John W. Anderson
11. John W. Anderson
12. John W. Anderson
13. John W. Anderson
14. John W. Anderson
15. John W. Anderson
16. John W. Anderson
17. John W. Anderson
18. John W. Anderson
19. John W. Anderson
20. John W. Anderson
21. John W. Anderson
22. John W. Anderson
23. John W. Anderson
24. John W. Anderson
25. John W. Anderson
26. John W. Anderson
27. John W. Anderson
28. John W. Anderson
29. John W. Anderson
30. John W. Anderson
31. John W. Anderson
32. John W. Anderson
33. John W. Anderson
34. John W. Anderson
35. John W. Anderson



LAKE SIDE ALLOTMENT
INDIAN LAKE
LOGAN COUNTY, OHIO
STOKES TWP.

NOTE:
 Pine Street Vacated & Relocated
 April 27, 1959. See Comm'n 195
 Journal 1-4, pages 194 & 195.

SUBVENOR'S CERTIFICATE
 The accompanying plat represents a subdivision of land in a part of Section 27 & 28, Township 16 North, Range 10 East, Logan County, Ohio, known as LAKE SIDE ALLOTMENT. The direction of lines, width of streets and lots are represented on the plat. The responsibility that is hereby certifying that the accompanying plat is a correct representation of LAKE SIDE ALLOTMENT.
 W. H. Anderson
 Civil Engineer

Approved: *[Signature]*
 Date: 27 Jan. 47
 County Engineer

Approved: *[Signature]*
 Date: 27 Jan. 47
 County Commissioners

Transferred: *[Signature]*
 January 27, 1947
 County Auditor

Approved: *[Signature]*
 Date: 27 Jan. 47
 County Recorder

NOTE: - Iron Pipe
 - Steel Pipe post 30" long.
 Scale: - 1" = 50'