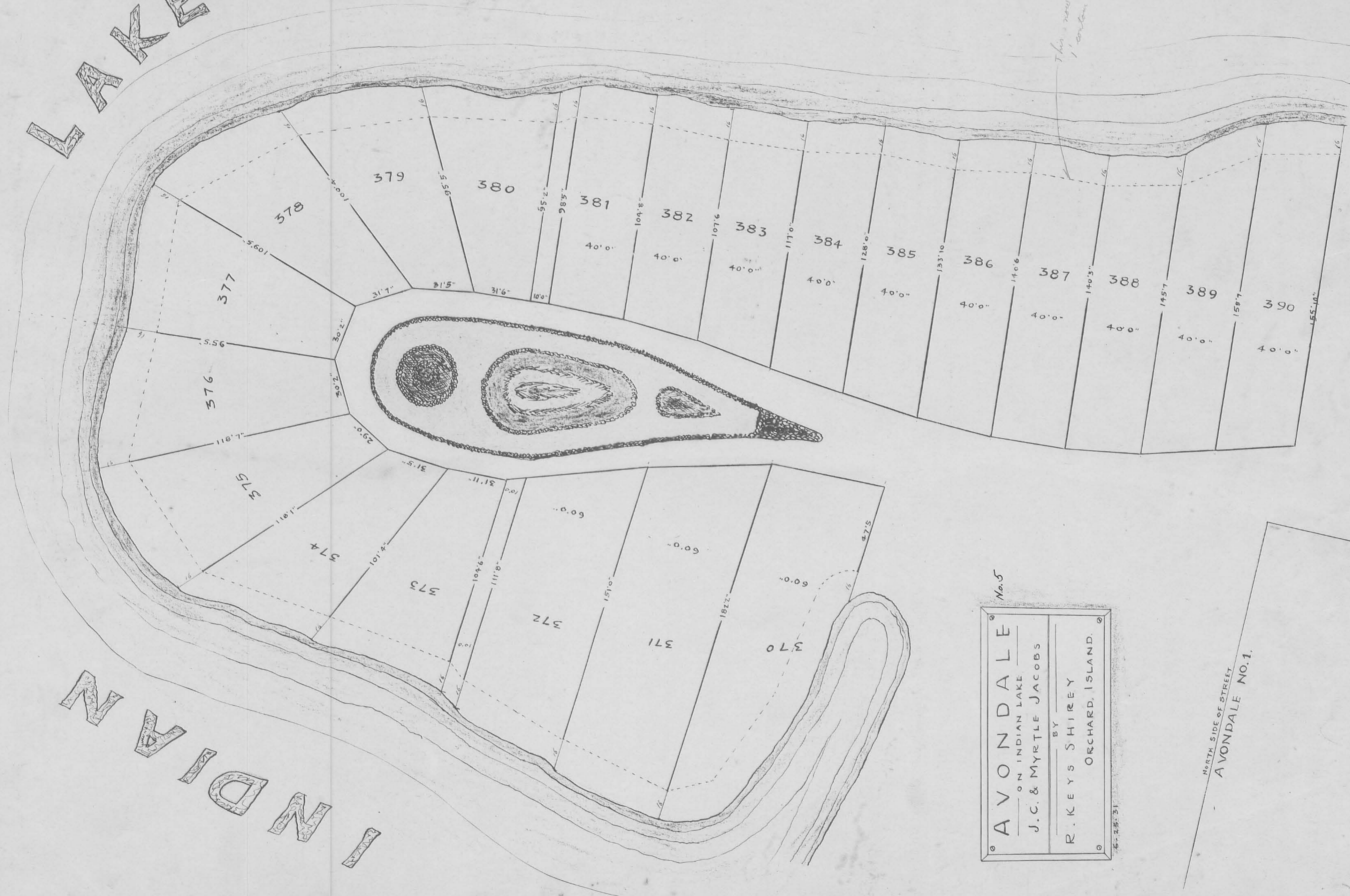


LAKE

INDIAN



This area runs to a  
1' center line.

No. 5

**AVONDALE**  
ON INDIAN LAKE  
J.C. & MYRTLE JACOBS

BY  
R. KEYS SHIREY  
ORCHARD, ISLAND.

6-25-31

NORTH SIDE OF STREET  
AVONDALE NO. 1.