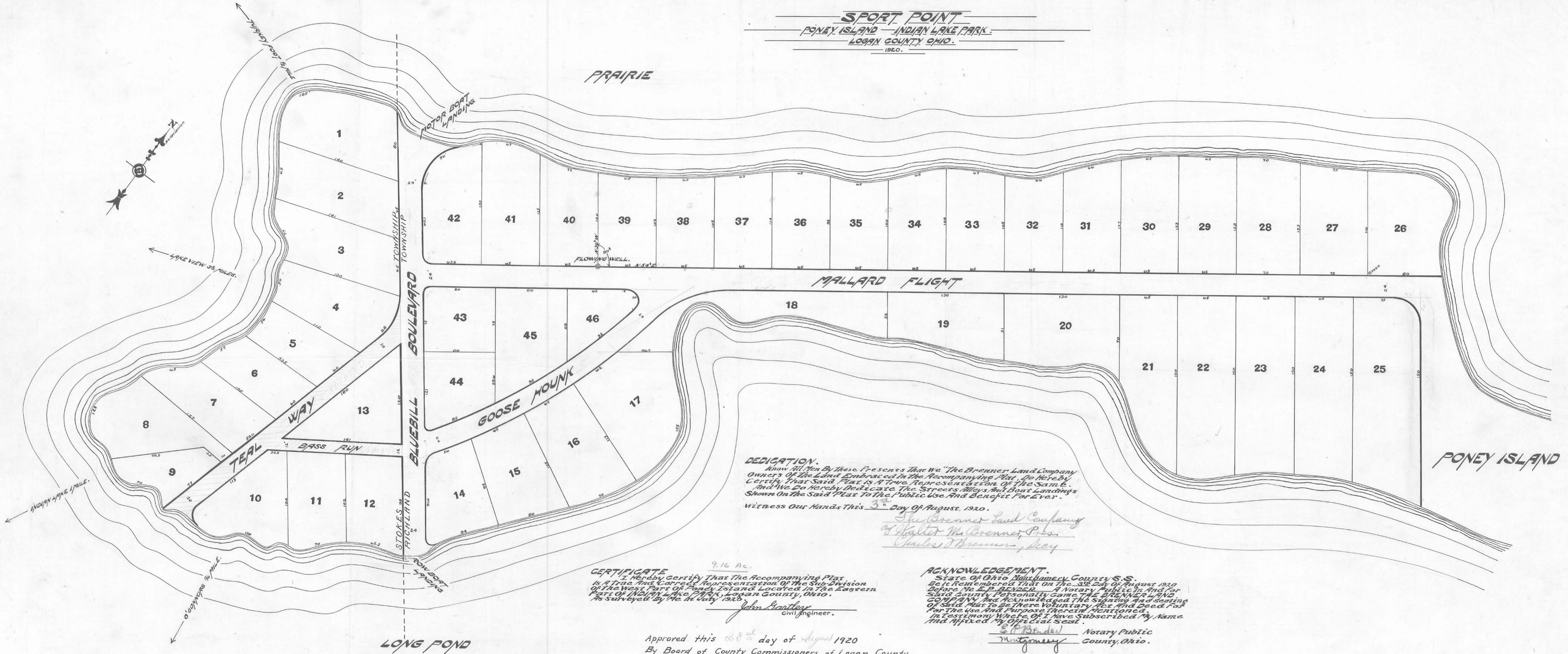


SPORT POINT
PONEY ISLAND - INDIAN LAKE PARK
LOGAN COUNTY OHIO.
 1920.



DEDICATION.
 Know All Men By These Presents That We, The Brenner Land Company, Owners Of The Land Embraced In The Accompanying Plat, Do Hereby Certify That Said Plat Is A True Representation Of The Same, And We Do Hereby Dedicate The Streets, Alleys And Boat Landings Shown On The Said Plat To The Public Use And Benefit For Ever.
 Witness Our Hands This 3rd Day Of August, 1920.

The Brenner Land Company
 of *Walter W. Brenner, Pres.*
Charles J. Brenner, Secy

CERTIFICATE
 9.16 Ac.
 I hereby certify that the accompanying Plat is a true and correct representation of the subdivision of the West Part of Poney Island located in the Eastern Part of Indian Lake Park, Logan County, Ohio, as surveyed by me in July, 1920.
John Bentley
 civil engineer.

ACKNOWLEDGEMENT.
 State of Ohio, Montgomery County, S.S.
 Be it Remembered that on the 3rd day of August, 1920, before me, E. P. BENDER, a Notary Public in and for said County, personally came THE BRENNER LAND COMPANY and acknowledged the signing and sealing of said Plat to be their voluntary act and deed for the use and purpose therein mentioned.
 In Testimony Whereof I have subscribed my Name and affixed my Official Seal.
E. P. Bender Notary Public
 Montgomery County, Ohio.

Approved this 28th day of August 1920
 By Board of County Commissioners of Logan County.

A. B. Hoover
W. C. Knight

Transferred August 25, 1920,
 W. W. Corbet, Auditor.
 S.L.S.

Filed for Record Aug 24-1920, at 10:45 A.M.
 Recorded Aug 26-1920
 O. M. Painter