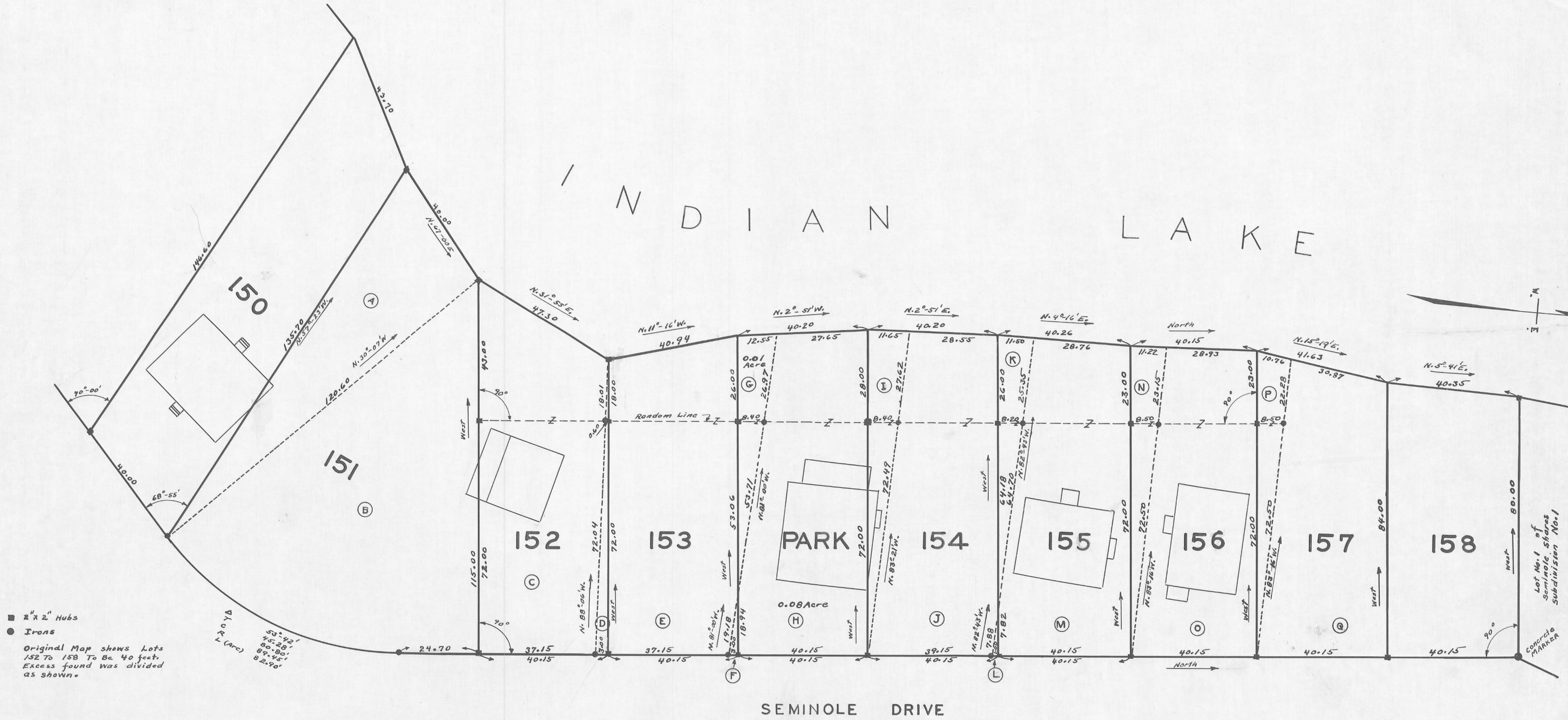


INDIAN LAKE



■ 2" X 2" Hubs
 ● Irons
 Original Map shows Lots 152 to 158 to be 40 feet. Excess found was divided as shown.

Part of Lot	Present Owner (7-30-1945)	To
151 (A)	Geo. O. Grimes et ux. (No Transfer)	W.H. Brown
157 (B)	Geo. O. Grimes et ux. (No Transfer)	Geo. O. Grimes et ux.
152 (C)	L.J. Kraus	Alice Merideth
153 (D)	L.J. Kraus (No Transfer)	L.J. Kraus
153 (E)	Alice Merideth (No Transfer)	L.J. Kraus
153 (F)	County Commissioners	Alice Merideth
Park (H)	County Commissioners (For Park)	Alice Merideth
154 (I)	C.A. Mitchell et ux.	County Commissioners (For Park)
154 (J)	C.A. Mitchell et ux. (No Transfer)	County Commissioners (For Park)
155 (K)	Geo. A. & Ruth P. Strabach	C.A. Mitchell et ux.
156 (L)	Geo. A. & Ruth P. Strabach (No Transfer)	C.A. Mitchell et ux.
157 (M)	Geo. A. & Ruth P. Strabach (No Transfer)	C.A. Mitchell et ux.
157 (N)	Nellie M. Robinson	Geo. A. & Ruth P. Strabach (Note P + Q is all of Lot 157)

RE SURVEY LOTS 151 TO 158 SEMINOLE ISLAND SUBDIVISION A

V.M.S. 12276
 STOKES TOWNSHIP — LOGAN COUNTY OHIO
 1" = 15'-0"

F.F. WRIGHT
 GROVER WILGUS

