

SURVEYORS CERTIFICATE

The accompanying plat represents a subdivision of land in the Township of Washington, County of Logan, State of Ohio and in V.M.S. 9925, 9946 and 10121.
I hereby certify that the accompanying plat is a correct representation of WATERBURY ALLOTMENT NUMBER TWO
Foster F. Wright
Registered Surveyor Number 1673

APPROVED DATE November 1, 1965
Christa R. Ault, P.E.
COUNTY ENGINEER

APPROVED DATE Nov. 1, 1965
Don Downing
Harry B. Lamb
William A. Jit
COUNTY COMMISSIONERS

APPROVED DATE August 26, 1963
W. H. Price, Principal District Sanitary Engineer
OHIO DEPARTMENT OF HEALTH

DEDICATION

Know all men by these presents that the proprietors of the land indicated on the accompanying plat have authorized the laying out of the same. All streets are dedicated for Public use.
Daniel E. Gilbert
Witness
Charles J. Laitner
Witness
Mildred R. Brackney
Oliver Setaer

TRANSFERRED DATE March 7, 1966
Chas. H. Chamberlain
COUNTY AUDITOR

RECEIVED FOR RECORD March 7, 1966
RECORDED IN PLAT BOOK F #6 PAGE 3
Burt Royer
COUNTY RECORDER

WATERBURY ALLOTMENT NUMBER TWO
WASHINGTON TOWNSHIP
LOGAN COUNTY OHIO

V.M.S. 9925, 9946, 10121 JULY 1963

SCALE 1" = 25'
0' 25' 50'

STATE OF OHIO COUNTY OF LOGAN SS:-

Be it remembered that on the 1 day of Nov. in the year of our Lord One Thousand Nine Hundred and sixty five before me a Notary Public in and for said County came the above shown proprietors as shown in the Dedication and acknowledged the signing thereof to be their voluntary act.
My term expires June 28, 1969
George Audley
Notary Public Logan County Ohio

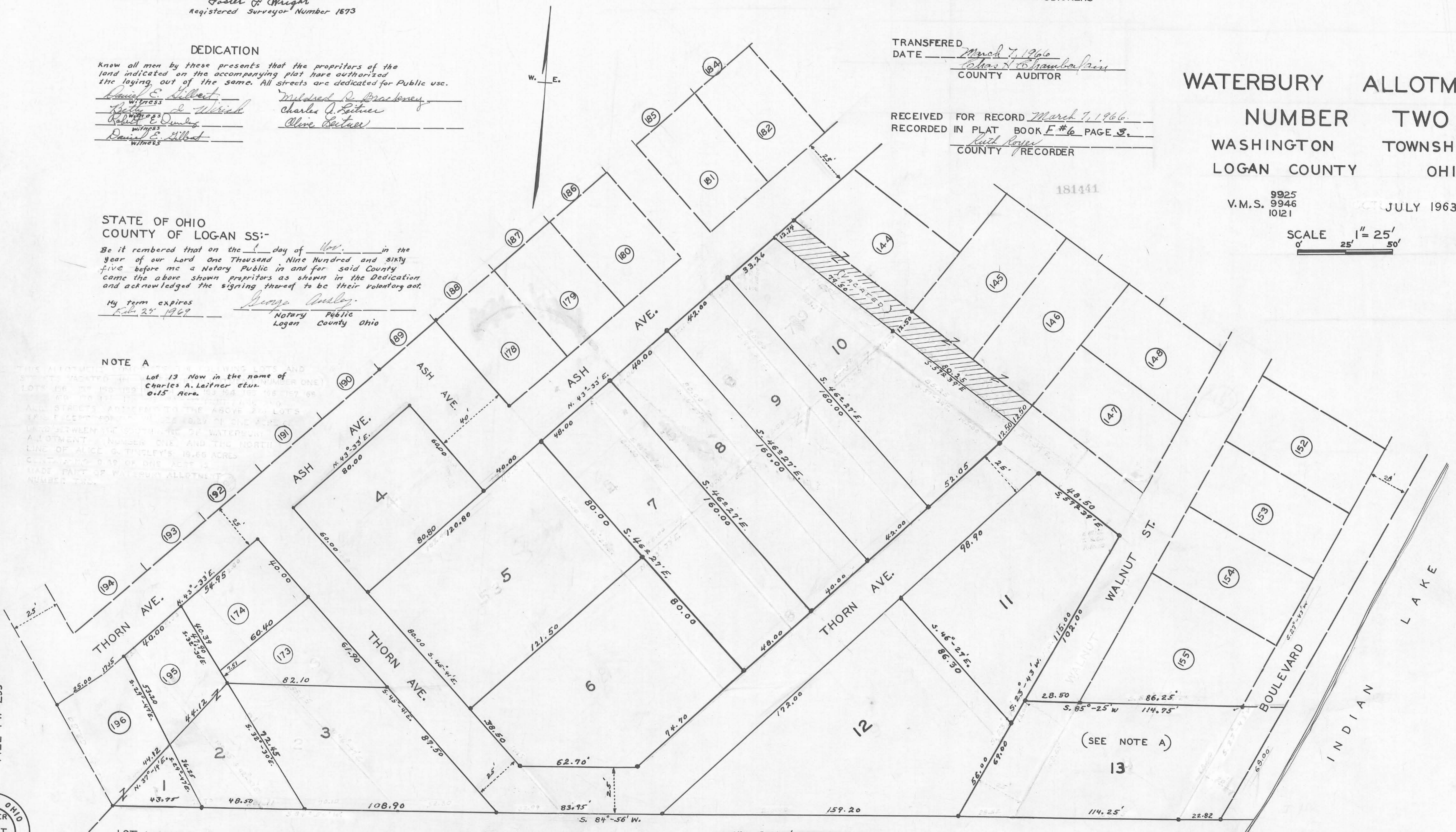
NOTE A

Lot 13 Now in the name of Charles A. Laitner et al. 0.15 Acres.

THIS TRACING TO BE PROPERTY OF LOGAN COUNTY ENGINEER
FILE FW-255



Rev. 6-16-1963
Rev. 7-25-1963
Rev. 12-27-1961



LOT NUMBERS SHOWN IN CIRCLES ARE IN WATERBURY ALLOTMENT.
WATERBURY ALLOTMENT LOGAN COUNTY RECORDERS BOOK C VOL. 3 PAGES 1 & 2

● INDICATES IRONS
LOTS 1 TO 13 CONTAIN 2.07 ACRES
STREETS ADJACENT TO LOTS 1 TO 13 CONTAIN 0.50 ACRE
2.57 ACRES

Alice G. Tinsley
19.66 Acres