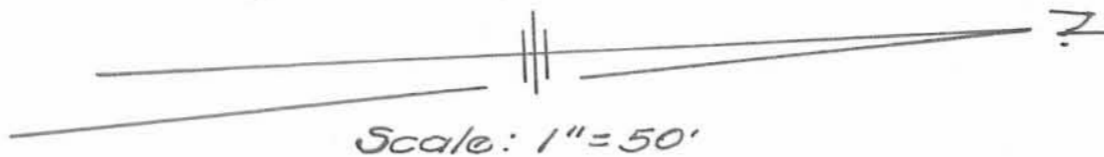


Iron Pin
The interior lot lines are parallel to the westerly line of Cretcher Street.



DEDICATION:

Know all men by these presents that Nevin Hirschfeld and Verona Hirschfeld, husband and wife, proprietors of the land indicated on the accompanying plat have authorized the platting of the same and do hereby dedicate the streets to the public.

Gilles B. Hester Nevin Hirschfeld
William V. Stephenson
Gilles B. Hester Verona Hirschfeld
William V. Stephenson
Witness

SURVEYOR'S CERTIFICATE:

The accompanying plat represents a subdivision of land in the Village of De Graff, Pleasant Township, Logan County, Ohio, being part of Section 7, Town 2, Range 14. The tract has an area of 3.15 acres in lots and 0.72 acres in streets, making a total of 3.87 acres. The dimensions are in feet and decimals of a foot. I hereby certify that the accompanying plat is a correct representation of the Pleasant Hill Allotment.

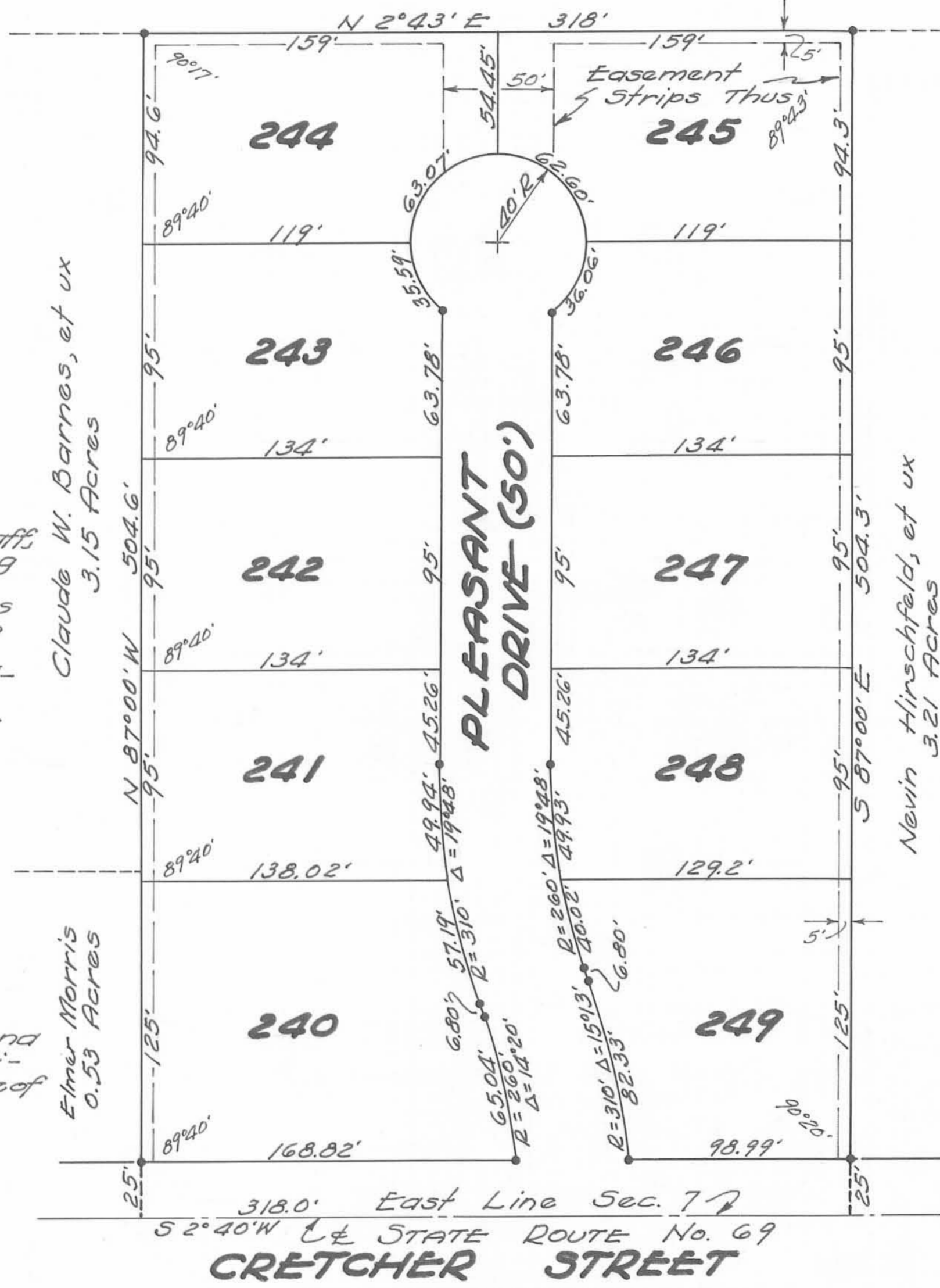
Cecil E. Mungink
Reg. Surv. #3151.

STATE OF OHIO SS
COUNTY OF LOGAN

Be it remembered that on this _____ day of October in the year 1959, before me, a Notary Public in and for said County, came Nevin Hirschfeld and Verona Hirschfeld, grantors in the foregoing dedication, and acknowledged the signing thereof to be their free and voluntary act.

Robert C. Armstrong
Notary Public.

My commission expires June 11, 1961



PLEASANT HILL ALLOTMENT
DE GRAFF **OHIO**
PLEASANT TWP. **LOGAN CO.**
1959.

ACCEPTANCE:

The annexed plat was adopted by Ordinance Number 670 as an addition to the Village of De Graff, at a regular meeting of the Village Council on the 29th day of October, 1959.

Mary G. Slater Clerk.
Max A. Hult President of Council.

COUNTY ENGINEER'S OFFICE
Approved this 22 day of December, 1959.
H. D. Tuller Logan County Engr.

AUDITOR'S OFFICE
The within lots transferred this 22nd day of December, 1959.
Chas. H. Chamberlain Auditor of Logan Co.
154914

RECORDER'S OFFICE
Received for record at 2:20 o'clock P. M. on this 22nd day of December, 1959. Recorded in Plat Book 4, Volume D, Page 66.
Rosemarie L. Strayer Recorder of Logan Co.



This tracing to be filed with the Logan County Engineer.