

SURVEYORS CERTIFICATE

The accompanying Plat represents a subdivision of land in the Township of Stokes, County of Logan, State of Ohio and in V. M. S. 12277. The east 25 feet of Route 702 has an area of 0.07 Acre. King Ave. has an area of 0.82 Acre. Making a total in Street and Road 0.89 Acre. The 17 Lots have an area of 4.66 Acres. Making a total in the Allotment of 2.55 Acres. The distances are in feet and tenths. I hereby certify that the accompanying Plat is a correct representation of King Landing Allotment.

Foster F. Wright
Registered Surveyor Number 1673

DEDICATION

Know all men by these presents that the owners of the land indicated on the accompanying Plat has authorized the laying out of the same as indicated on the Plat and do hereby dedicate the Street and road to the use of the public

Josephine J. ... Lewis F. King
Daniel E. Silbert Cecilia M. King
WITNESS

STATE OF OHIO
COUNTY OF LOGAN SS:

Be it remembered that on this 17th day of May in the year of our Lord One Thousand Nine Hundred and Sixty before me a Notary Public in and for said County personally came the grantors in the foregoing dedication and acknowledged the signing thereof to be their free and voluntary act and deed.

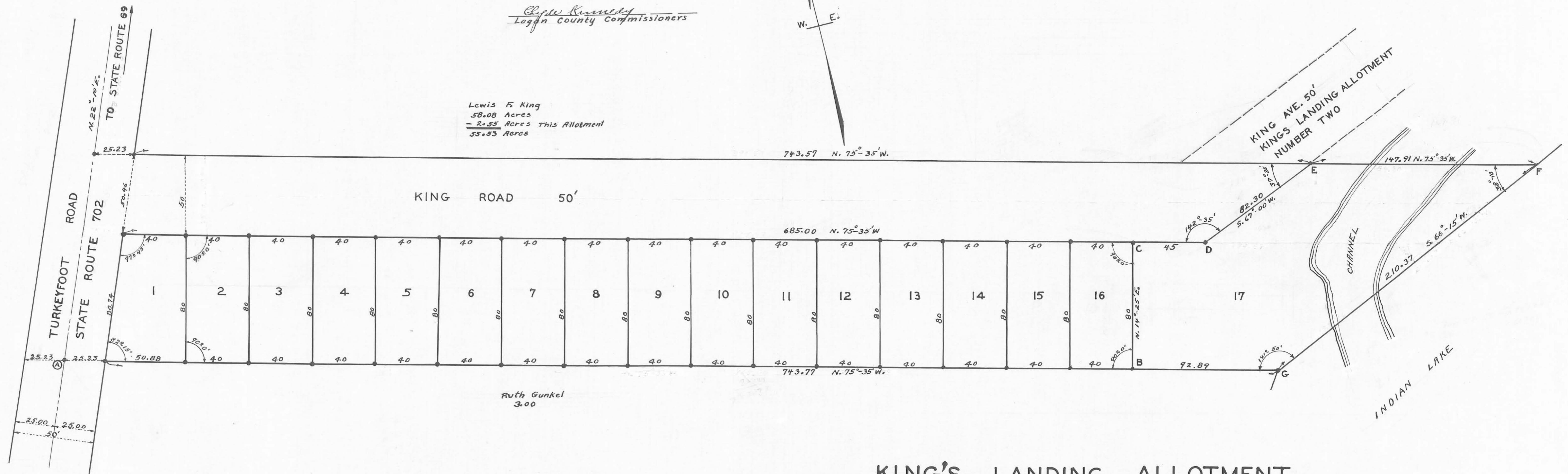
Agnes M. Miles
Notary Public
Exp. 21, 1962
My Commission Expires

APPROVED
DATE May 21, 1960
E. K. Love
Logan County Engineer

APPROVED
DATE May 23, 1960
Foster A. Dale
William R. Fox
Edw. Kennedy
Logan County Commissioners

TRANSFERRED
DATE May 25, 1960
Chas. H. Chamberlain
LOGAN COUNTY AUDITOR
156423

RECEIVED FOR RECORD May 25th 1960 @ 12:55 P.M.
RECORDED IN PLAT BOOK 4-D PAGE 73
Rourna L. Strasser
LOGAN COUNTY RECORDER

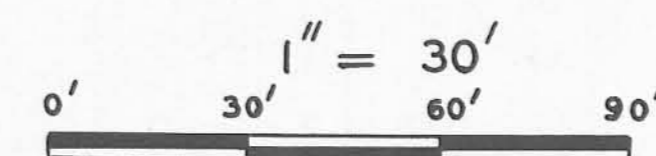


Lewis F. King
58.08 Acres
- 2.55 Acres This Allotment
55.53 Acres

Ruth Gunkel
3.00

KING'S LANDING ALLOTMENT

STOKES TOWNSHIP
LOGAN COUNTY OHIO
V.M.S. 12277 APRIL 1960



LOGAN COUNTY ENGINEER'S FILE J-122

This Tracing to be filed with Logan County Engineer