

SURVEYORS CERTIFICATE

The accompanying Plat represents a subdivision of land in the Township of Rushcreek County of Logan State of Ohio and in V.M.S. 9932. One half State Highway 274 has an area of 0.23 Acre. The Four Lots have an area of 1.98 Acres making a total in all 2.21 Acres. The distances are in feet and tenths. I hereby certify that the accompanying Plat is a correct representation of Kemp Acres

Foster F. Wright
Registered Surveyor Number 1673

DEDICATION

Know all men by these presents that the owners of the land indicated on the accompanying Plat has authorized the laying out of the same as indicated on the Plat

E. N. Love John L. Kemp
Harry E. Duput Mabel J. Kemp

John L. Kemp
108.06 Acres
- 2.21 Acres This Allotment
105.85 Acres

STATE OF OHIO
COUNTY OF LOGAN SS:

Be it remembered that on this 31 day of May in the year of our Lord One Thousand Nine Hundred and Sixty before me a Notary Public in and for said County personally came the Grantors in the foregoing dedication and acknowledged the signing thereof to be their free and Voluntary act and deed

Notary Public, Logan County, Ohio
My Commission Expires November 21, 1962

Agnes M. Miller
Notary Public
November 31, 1962
My Commission Expires

APPROVED DATE May 31, 1960

E. N. Love
Logan County Engineer

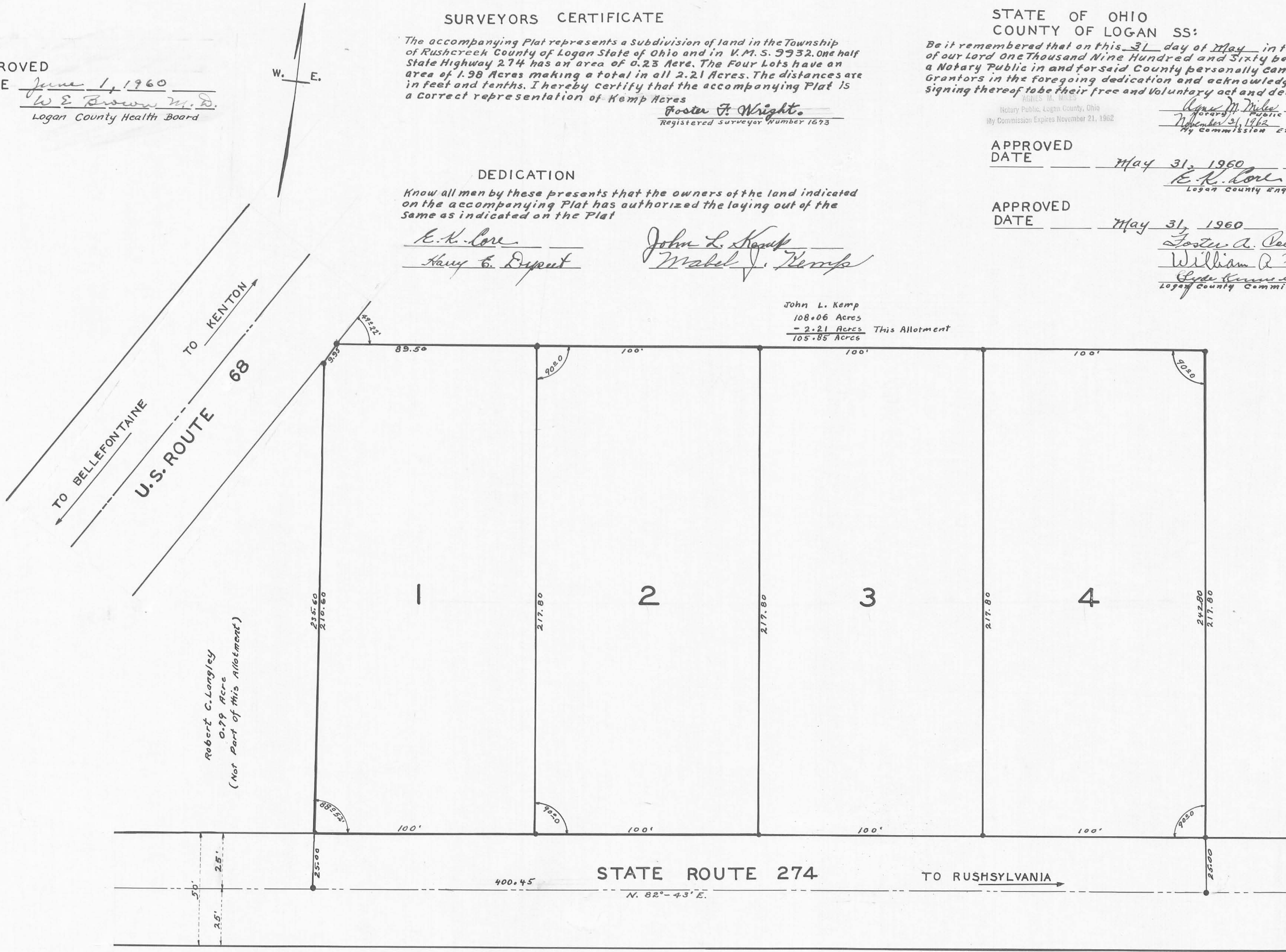
APPROVED DATE May 31, 1960

Foster A. Cole
William R. Foy
Logan County Commissioners

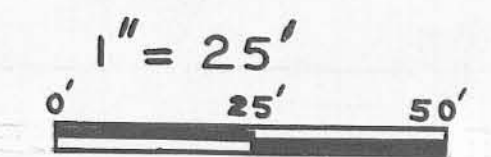
TRANSFERRED DATE June 2, 1960
Charles H. Chamberlain
Logan County Auditor

156500
RECEIVED FOR RECORD June 2 1960 10:20 A.M.
RECORDED IN PLAT BOOK 4 D PAGE 74
Rourna L. Strayer
Logan County Recorder

APPROVED DATE June 1, 1960
W. E. Brown, M.D.
Logan County Health Board



KEMP ACRES
RUSHCREEK TOWNSHIP
LOGAN COUNTY OHIO
MAY 1960 V.M.S. 9932



BOOK FW-31
FILE FW-338

This tracing to be filed with Logan County Engineer.

