

SURVEYORS CERTIFICATE

The accompanying Plat represents a Subdivision of land in the Township of Stokes, County of Logan State of Ohio and in V.M.S. 12277. State Route 702 has an area of 0.08 Acre. Queen Drive has an area of 1.02 Acres. The Sixteen Lots have an area of 1.83 Acres. Making a total in the Allotment of 2.93 Acres. The distances are in feet and tenths. I hereby certify that the accompanying Plat is a correct representation of King's Landing Allotment Number Four.

Foster F. Wright
Registered Surveyor Number 1673

STATE OF OHIO
COUNTY OF LOGAN SS:

Be it remembered that on this 6th day of Nov in the year of our Lord One Thousand Nine Hundred and Sixty One before me a Notary Public in and for said County personally came the Grantors in the foregoing dedication and acknowledged the signing thereof to be their free and Voluntary act and deed.

Geo. W. Ansley
My commission Expires _____

APPROVED DATE November 6, 1961
DATE November 6, 1961
W.S. Brown M.D. M.P.H.
Logan County Health Commissioner
Chas. H. Chamberlain
Logan County Auditor

DEDICATION

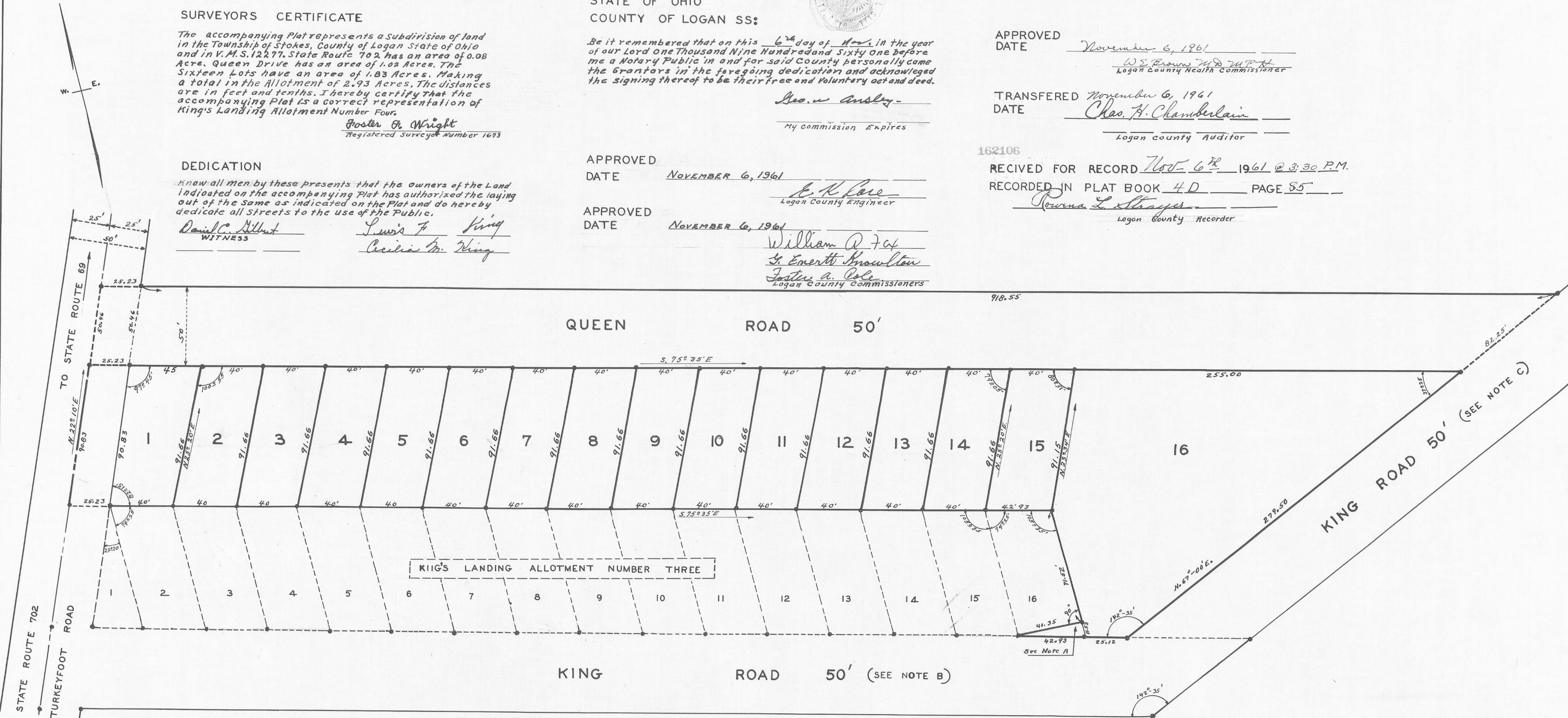
Know all men by these presents that the owners of the Land indicated on the accompanying Plat has authorized the laying out of the same as indicated on the Plat and do hereby dedicate all Streets to the use of the Public.

David C. Althut Lewis F. King
WITNESS Cecilia M. King

APPROVED DATE NOVEMBER 6, 1961
E. K. Lore
Logan County Engineer

APPROVED DATE NOVEMBER 6, 1961
William A. Fox
St. Emerith Knowlton
Josiah A. Cole
Logan County Commissioners

162106
RECEIVED FOR RECORD Nov-6th 1961 @ 3:30 P.M.
RECORDED IN PLAT BOOK 4D PAGE 55
Rovena L. Shroyer
Logan County Recorder



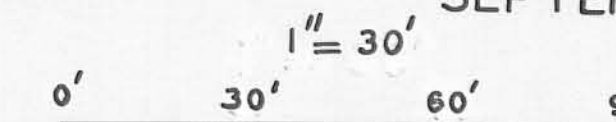
Note A
This triangle is part of King's Landing Allotment Number Four and is to be part of King Road.

Note B
This part of King Road is part of Original King's Landing Allotment.

Note C
This part of King Road is part of King's Landing Allotment Number Two.

● INDICATES IRONS
FILE FW-336-B

**KING'S LANDING ALLOTMENT
NUMBER FOUR**
STOKES TOWNSHIP
LOGAN COUNTY OHIO
V.M.S. 12277
SEPTEMBER 1961



This tracing to be filed with Logan County Engineer

