

SURVEYORS CERTIFICATE

The accompanying plat a subdivision of land in Section 6 Town 3 Range 14, Harrison Township Logan County Ohio. The tract has an area of 0.84 of one acre in County Road No. 218 5.56 acres in the Ten Lots making a total of 6.40 acres. The width of County Road No. 218 is shown. All measurements are in feet and decimals of a foot I hereby certify that the accompanying plat is a correct representation of SHADY KNOLLS ALLOTMENT NUMBER TWO.

Foster F. Wright
Registered Surveyor No 1673

DEDICATION

Known all men by these presents that the owner of the land indicated on the accompanying plat has authorized the laying out of the same as indicated on the plat and do hereby dedicate the road to the use of the public

John M. Doby witness
Charles L. Shawver owners
Joan M. Shawver owners

STATE OF OHIO
COUNTY OF LOGAN SS:

Be it remembered that on this 1st day of August in the year of our Lord One thousand nine hundred and sixty three before me a Notary Public in and for said County personally came the grantors in the foregoing dedication and acknowledged the signing thereof to be their free and voluntary act and deed.

Paul R. Parrott
Notary Public
8-31-63
Commission Expires

COUNTY ENGINEERS OFFICE

Approved this 1st day of August 1963
Charles F. Hardy
Logan County Engineer

PLANNING COMMISSION

The annexed plat approved by Bellefontaine City Planning Commission this 27th day of August 1963
Charles L. Corring
Chairman

ACCEPTANCE

The annexed plat was approved and accepted by the Board of County Commissioners at a regular meeting this 9th day of September 1963

Foster A. Cole
William A. Fox
G. Emmett Shoultz
Logan County Commissioners

HARRISON TOWNSHIP ZONING BOARD

The annexed plat approved by Harrison Township Zoning Board this 3rd day of Sept 1963
Raymond P. Ptas
Chairman

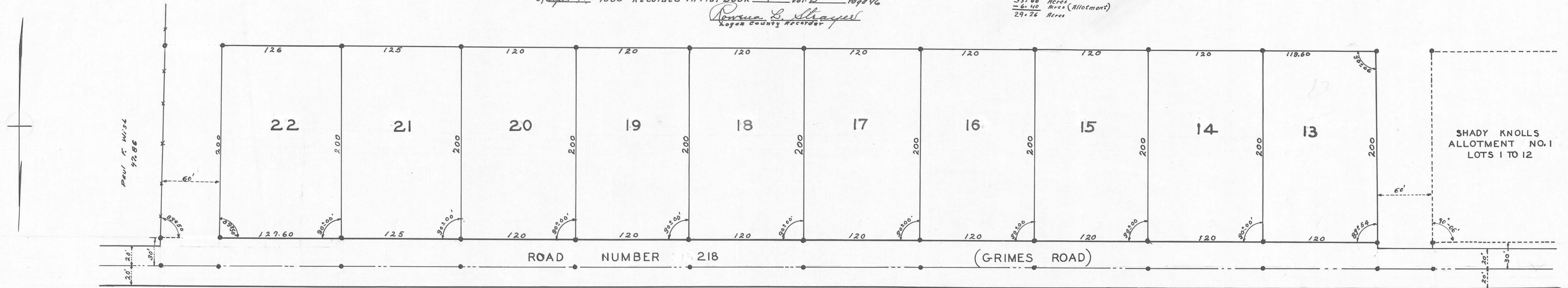
AUDITORS OFFICE

The within lots transferred this 9 day of Sept 1963
Chas H. Chamberlain
Logan County Auditor

169317 RECORDERS OFFICE

Received for record at 2:35 o'clock P.M. on this day of Sept 1963 Recorded in Plat Book 4 Vol. D Page 96
Roscoe S. Shaper
Logan County Recorder

Chas. L. Shawver et ux
35.66 Acres
= 6.40 Acres (Allotment)
29.26 Acres



SHADY KNOLLS ALLOTMENT NO. TWO

HARRISON TOWNSHIP

LOGAN COUNTY OHIO

SECTION 6 TOWN 3 RANGE 14

JULY 1963 SCALE 1" = 50'
0' 50' 100'

● INDICATES IRONS
FILE FW-493

