



# Kamp A Lot

## SECTION No 3



SITUATE IN THE STATE OF OHIO, COUNTY OF LOGAN, TOWNSHIP OF JEFFERSON, IN VIRGINIA MILITARY SURVEY 3139 AND BEING A PART OF THE TRACT OF LAND CONVEYED TO CS 48 PARTNERSHIP AND R.C.D. INC BY DEED OF RECORDED IN DEED BOOK 341, PAGE 286, RECORDERS OFFICE, LOGAN COUNTY, OHIO

KNOW ALL MEN BY THESE PRESENTS THAT C.S. & D. PARTNERSHIP BY ROY L. BENSON, DORIS E. BENSON, PARTNERS AND BY C.S.L. SERVICE CORPORATION PARTNER, BY ITS PRESIDENT, EMADLE E. HAMMOND AND ITS SECRETARY, RICHARD A. POTTER, HAVING BEEN DULY AUTHORIZED, AND R.C.D. INC BY ITS PRESIDENT, JOHN EDWARDS AND ITS SECRETARY, PAULA POWERS, HAVING BEEN DULY AUTHORIZED, BEING PROPRIETORS OF THE LAND INDICATED ON THE ACCOMPANYING PLAT HAVE AUTHORIZED THE PLATTING THEREOF AND DO HEREBY DEDICATE THE DRIVES, LANES AND RESERVE TO PRIVATE USE FOREVER.

*Richard A. Potter*  
RICHARD A. POTTER - SECRETARY C.S.L. SERVICE CORP

*John Edwards*  
JOHN EDWARDS - PRESIDENT R.C.D. INC

*Paula Powers*  
PAULA POWERS - SECRETARY R.C.D. INC

*Emadle E. Hammond*  
EMADLE E. HAMMOND - PRESIDENT C.S.L. SERVICE CORP

*John Edwards*  
JOHN EDWARDS - PRESIDENT R.C.D. INC

*Paula Powers*  
PAULA POWERS - SECRETARY R.C.D. INC

STATE OF OHIO  
COUNTY OF LOGAN

BEFORE ME A NOTARY PUBLIC IN AND FOR SAID COUNTY PERSONALLY CAME JOHN EDWARDS, PRESIDENT OF R.C.D. INC AND PAULA POWERS, SECRETARY OF R.C.D. INC WHO ACKNOWLEDGED THE SIGNING OF THE FOREGOING INSTRUMENT TO BE THEIR VOLUNTARY ACT AND DEED FOR THE USES AND PURPOSES THEREIN EXPRESSED.

IN WITNESS WHEREOF, I HAVE HEREIN SET MY HAND AND AFFIXED MY OFFICIAL SEAL THIS 21 DAY OF FEB. 1973

BY *Jerry M. Berman*  
NOTARY PUBLIC

REVIEWED THIS 26 DAY OF February 1973 *Charles R. Kutz, Jr.*  
CHAIRMAN, TOWNSHIP TRUSTEES

APPROVED THIS 26 DAY OF February 1973 *Charles R. Kutz, Jr.*  
LOGAN COUNTY ENGINEER

APPROVED THIS 27 DAY OF February 1973 *W.G. Yuley, Dvm.*  
LOGAN COUNTY HEALTH DEPT.

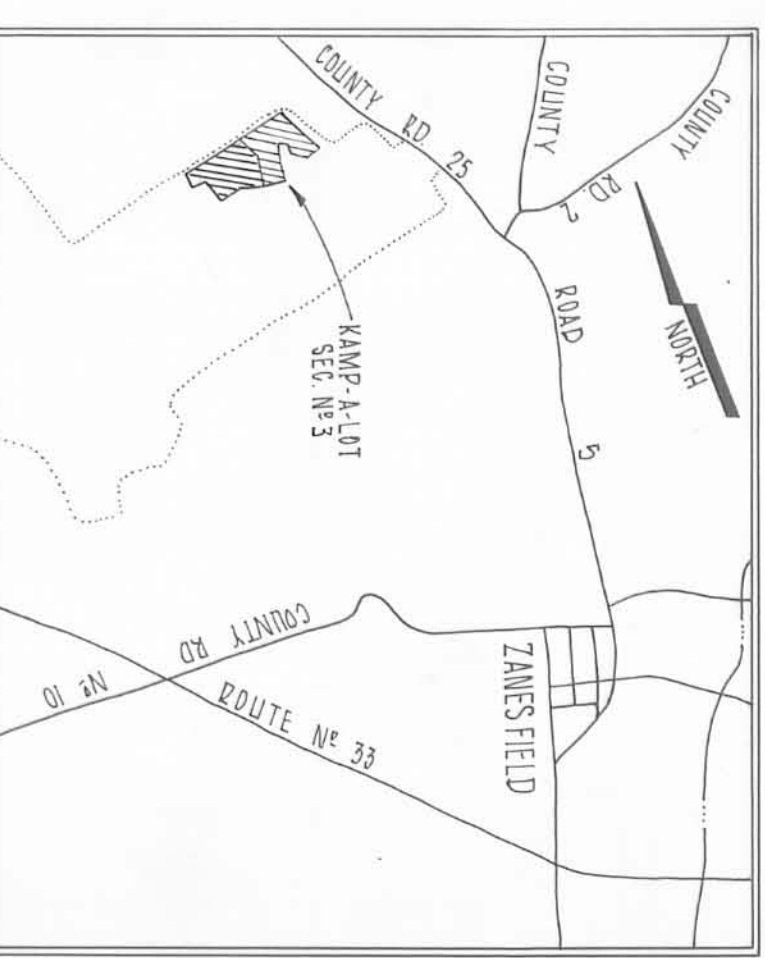
APPROVED THIS 23 DAY OF February 1973 *Lynnwood Wast*  
L.C. REGIONAL PLANNING COMMISSION

TRANSFERRED THIS 30 DAY OF March 1973 *Thos. S. Slater*  
LOGAN COUNTY ADDUCT

SURVEYORS CERTIFICATE

THE ACCOMPANYING PLATS REPRESENTS A SUBDIVISION OF LAND IN VIRGINIA MILITARY SURVEY No 3139, JEFFERSON TOWNSHIP, LOGAN COUNTY, OHIO. THE TRACT HAS AN AREA OF 3,496 ACRES IN STREETS, 1,804 ACRES IN RESERVES AND 13905 ACRES IN LOTS MAKING A TOTAL OF 19197 ACRES. ALL MEASUREMENTS ARE IN FOOT AND DECIMALS OF A FOOT. ALL MEASUREMENTS ON CURVES ARE (CHORD) DISTANCES.

DATE: 3-21-73



STATE OF OHIO  
COUNTY OF HAMCOCK SS

BEFORE ME A NOTARY PUBLIC IN AND FOR SAID COUNTY PERSONALLY CAME DOV L. BENSON, DORIS E. BENSON, EMADLE E. HAMMOND, PRESIDENT OF C.S.L. SERVICE CORPORATION AND RICHARD A. POTTER, SECRETARY OF C.S.L. SERVICE CORPORATION WHO ACKNOWLEDGED THE SIGNING OF THE FOREGOING INSTRUMENT TO BE THEIR VOLUNTARY ACT AND DEED FOR THE USES AND PURPOSES THEREIN EXPRESSED.

IN WITNESS WHEREOF, I HAVE HEREIN SET MY HAND AND AFFIXED MY OFFICIAL SEAL THIS 14 DAY OF FEBRUARY 1973

*Richard A. Potter*  
RICHARD A. POTTER - SECRETARY C.S.L. SERVICE CORP

*John Edwards*  
JOHN EDWARDS - PRESIDENT R.C.D. INC

*Paula Powers*  
PAULA POWERS - SECRETARY R.C.D. INC

*Emadle E. Hammond*  
EMADLE E. HAMMOND - PRESIDENT C.S.L. SERVICE CORP

*John Edwards*  
JOHN EDWARDS - PRESIDENT R.C.D. INC

*Paula Powers*  
PAULA POWERS - SECRETARY R.C.D. INC

STATE OF OHIO  
COUNTY OF HAMCOCK SS

BEFORE ME A NOTARY PUBLIC IN AND FOR SAID COUNTY PERSONALLY CAME DOV L. BENSON, DORIS E. BENSON, EMADLE E. HAMMOND, PRESIDENT OF C.S.L. SERVICE CORPORATION AND RICHARD A. POTTER, SECRETARY OF C.S.L. SERVICE CORPORATION WHO ACKNOWLEDGED THE SIGNING OF THE FOREGOING INSTRUMENT TO BE THEIR VOLUNTARY ACT AND DEED FOR THE USES AND PURPOSES THEREIN EXPRESSED.

IN WITNESS WHEREOF, I HAVE HEREIN SET MY HAND AND AFFIXED MY OFFICIAL SEAL THIS 14 DAY OF FEBRUARY 1973

*Richard A. Potter*  
RICHARD A. POTTER - SECRETARY C.S.L. SERVICE CORP

*John Edwards*  
JOHN EDWARDS - PRESIDENT R.C.D. INC

*Paula Powers*  
PAULA POWERS - SECRETARY R.C.D. INC

*Emadle E. Hammond*  
EMADLE E. HAMMOND - PRESIDENT C.S.L. SERVICE CORP

*John Edwards*  
JOHN EDWARDS - PRESIDENT R.C.D. INC

*Paula Powers*  
PAULA POWERS - SECRETARY R.C.D. INC

I HEREBY CERTIFY THAT THE ACCOMPANYING PLATS ARE CORRECT REPRESENTATIONS OF KAMP A LOT SECTION No 3

THE THOMAS ENGINEERING & SURVEYING CO.  
3805 SULLIVANT AVE  
SCALE: 1"=50'  
ORDER No 55672  
COLUMBUS, OHIO

*Robert L. White*  
REGISTERED SURVEYOR

SHEET 2 OF 2  
J-224 A