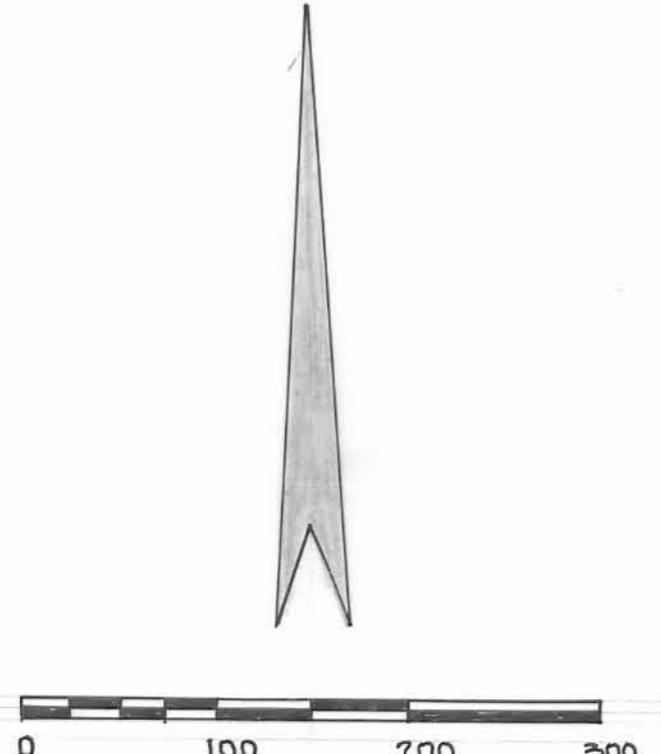
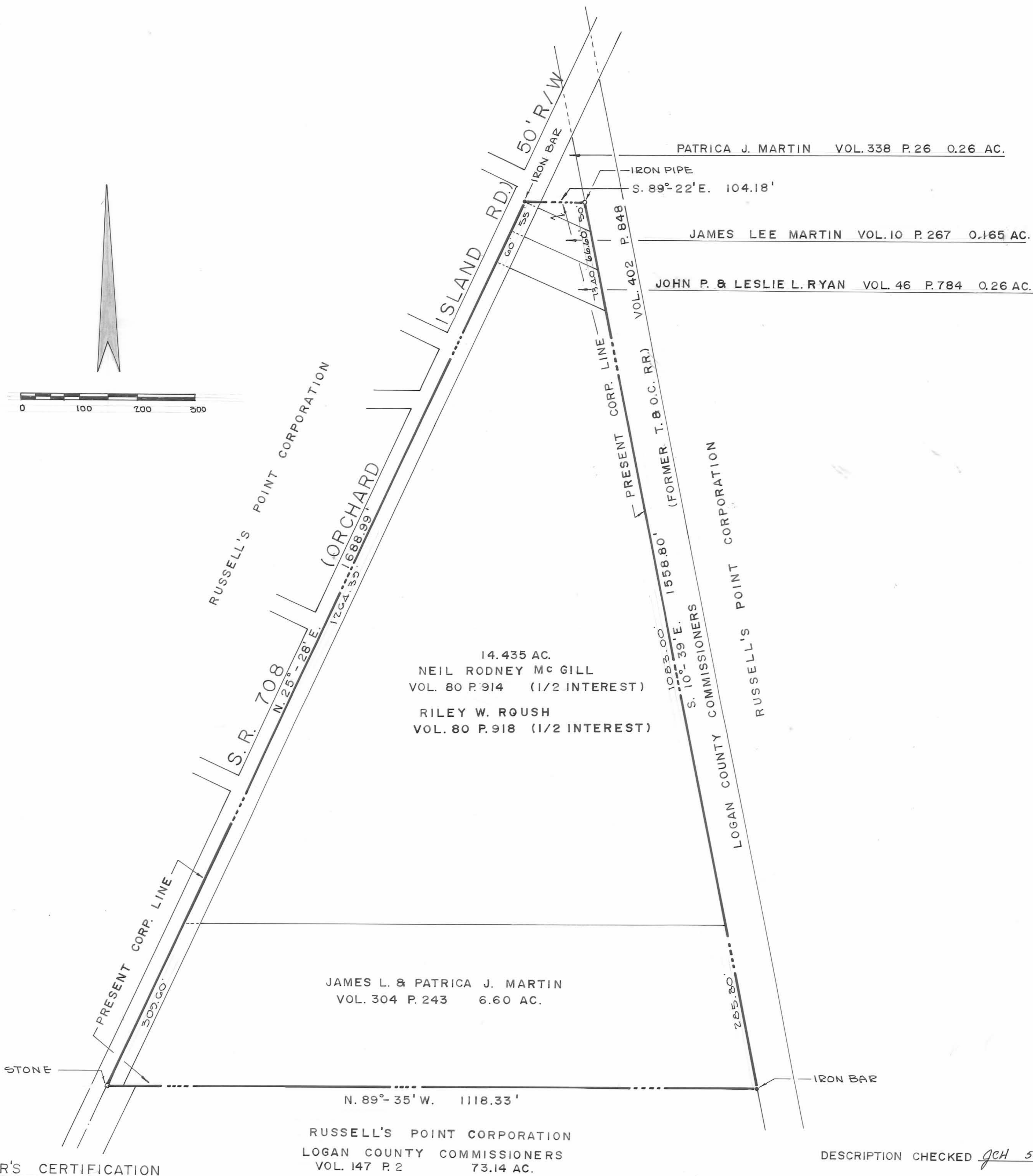


ANNEXATION PLAT

BEING 21.46 ACRES SITUATED IN SECTION 1, T.7S., R.8E., WASHINGTON TOWNSHIP, LOGAN COUNTY, OHIO, TO BE ANNEXED INTO THE VILLAGE OF RUSSELL'S POINT.



SURVEYOR'S CERTIFICATION

THIS ANNEXATION PLAT REPRESENTS AN AREA OF LAND THAT HAS BEEN RESEARCHED AND COMPILED BY ME FROM RECORDED DEEDS, MAPS AND OTHER RECORDS ON FILE IN THE LOGAN COUNTY, OHIO RECORDS. I HEREBY CERTIFY THAT THIS MAP IS A CORRECT REPRESENTATION OF THOSE RECORDS.

Harold A. Moores 2/22/89
 HAROLD A. MOORES R.L.S.

ANNEXATION LEGAL DESCRIPTION

SITUATED IN WASHINGTON TOWNSHIP, LOGAN COUNTY, OHIO AND BEING A PART OF SECTION 1, T.7S., R.8E., BOUNDED AND DESCRIBED AS FOLLOWS:
 BEGINNING AT A STONE IN THE CENTERLINE OF S.R. 708 (ORCHARD ISLAND RD) AT THE NORTHWEST CORNER TO THE LOGAN COUNTY COMMISSIONERS 73.14 ACRE TRACT AS DESCRIBED IN DEED VOL.147, P.2 AND THE SOUTHWEST CORNER TO JAMES L. MARTIN'S 6.60 AC. TRACT AS DESCRIBED IN DEED VOL.304, P.243 AND ALSO BEING A SOUTHEAST CORNER TO THE PRESENT CORPORATION LINE OF THE VILLAGE OF RUSSELL'S POINT;
 THENCE WITH THE PRESENT CORPORATION LINE AND THE CENTERLINE OF S.R. 708, N.25°-28'E. 1,688.99 FT. TO AN IRON BAR THAT IS S.25°-28'W. 34.50 FT. FROM A POINT MARKING THE CENTERLINE OF WARDEN ST., SAID IRON BAR BEING THE NORTHWEST CORNER TO JAMES LEE MARTIN'S 0.165 AC. TRACT AS DESCRIBED IN DEED VOL.10, P.267;
 THENCE WITH THE PRESENT CORPORATION LINE S.89°-22'E. 104.18 FT. TO AN IRON PIPE IN THE WEST RIGHT-OF-WAY LINE OF THE FORMER T.B.O.C. R.R., NOW OWNED BY THE LOGAN COUNTY COMMISSIONERS AS DESCRIBED IN DEED VOL.402, P.848, ALSO BEING THE PRESENT CORPORATION LINE;
 THENCE WITH THE WEST RIGHT-OF-WAY LINE AND THE PRESENT CORPORATION LINE S.10°-39'E. 1,558.80 FT. TO AN IRON BAR AT THE NORTHEAST CORNER TO THE LOGAN COUNTY COMMISSIONERS 73.14 AC. TRACT, THE SOUTHEAST CORNER OF THE JAMES L. MARTIN'S 6.60 AC. TRACT;
 THENCE WITH THE NORTH LINE OF SAID 73.14 AC. TRACT AND THE PRESENT CORPORATION LINE N.89°-35'W. 1,118.33 FT. TO THE PLACE OF BEGINNING, CONTAINING 21.46 AC., MORE OR LESS.

RUSSELL'S POINT PLANNING COMMISSION
John J. Gander 6-4-90
 CHAIRMAN
Maude F. Mallory 6-4-90
 MAYOR
John J. Gander 6-4-90
 PRESIDENT OF COUNCIL
 VILLAGE ORD. NO. 763

WASHINGTON TOWNSHIP TRUSTEES
Richard Beard 5/29/90
 CHAIRMAN

DESCRIPTION CHECKED JCH 5-23-90

Chester R. Kurzy 5-24-90
 LOGAN COUNTY ENGINEER

LOGAN COUNTY COMMISSIONERS
Donald C. Curran yes
John A. Jeffery yes
Edward K. Con yes

TRANSFERRED THIS 7TH DAY OF JUNE, 1990.
Frank Jones
 LOGAN COUNTY AUDITOR

RECORDED IN FLAT CABINET A SLIDE 715-B
 RECEIVED FOR RECORD AT 2:12 O'CLOCK A.M.
 THIS 8TH DAY OF JUNE, 1990.
Carolyn Collins
 LOGAN COUNTY RECORDER

PREPARED BY:
H. A. MOORES & ASSOC., INC.
 1224 South Main Street
 Bellefontaine, Ohio 43311



PART C&S, A SLIDE 715-B