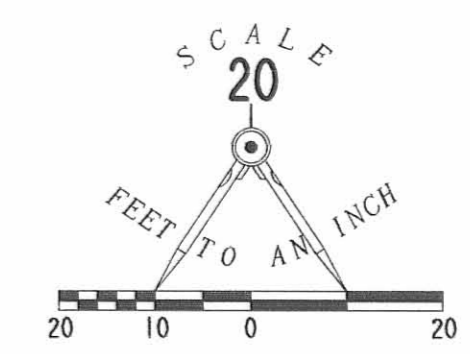
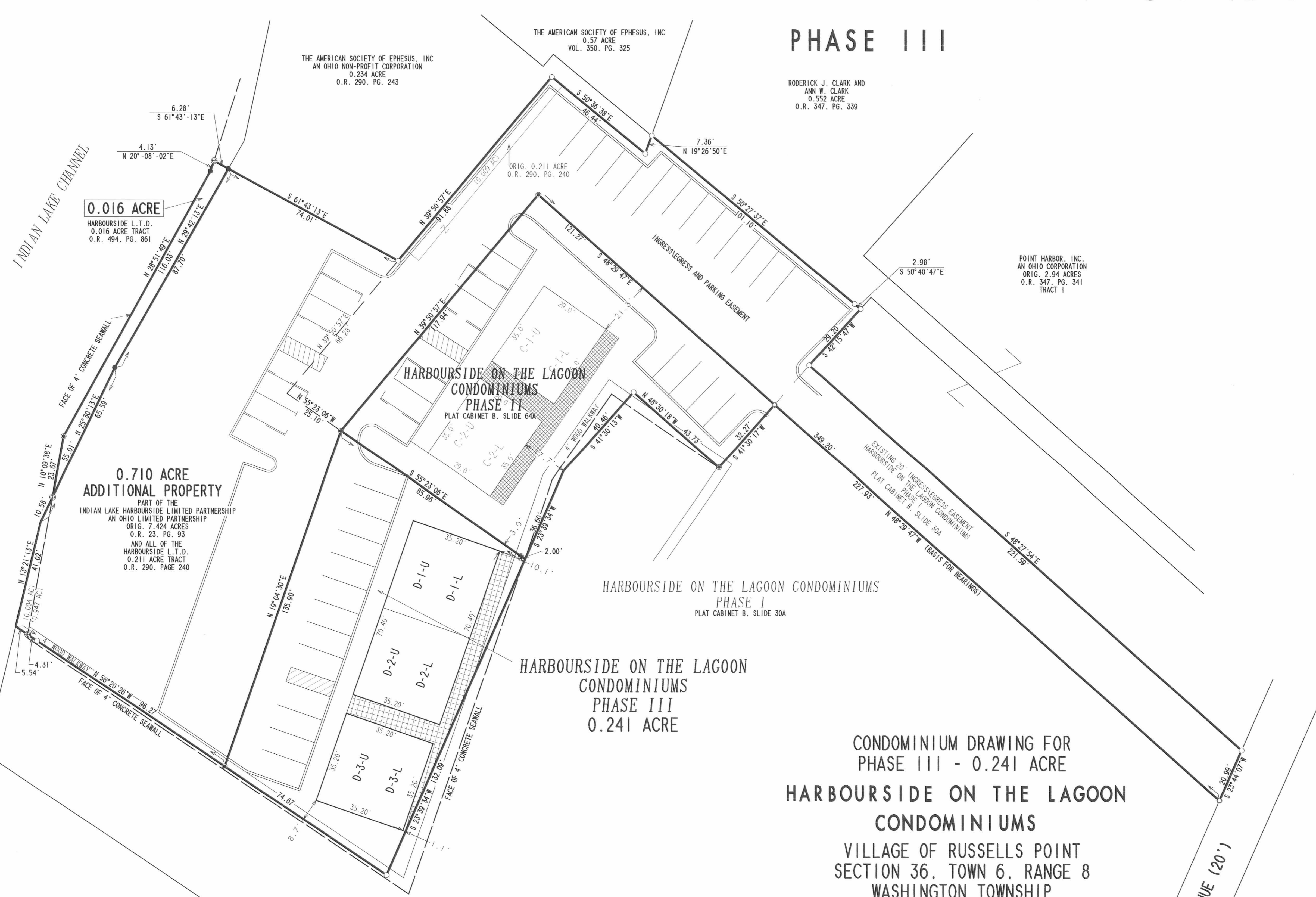


# HARBOURSIDE ON THE LAGOON CONDOMINIUMS

## PHASE III



- LEGEND**
- 5/8 INCH IRON ROD SET
  - 5/8 INCH IRON ROD FOUND
  - MAG NAIL SET
  - ⊕ CHISELED 'X' IN CONCRETE SET
  - DRILL HOLE IN CONCRETE FOUND
  - ▨ LIMITED COMMON AREA

APPROVED BY THE RUSSELLS POINT PLANNING COMMISSION

THIS 15<sup>TH</sup> DAY OF August, 2002.

*Robert J. Gaudy, Mayor*  
CHAIRMAN, RUSSELLS POINT PLANNING COMMISSION

PLAT CHECKED *Jon C. Hill* 8-15-02

DESCRIPTION CHECKED *Jon C. Hill* 8-15-02

TRANSFERRED THIS 15<sup>TH</sup> DAY OF August, 2002.

*Michael E. Gowan*  
AUDITOR, LOGAN COUNTY, OHIO

RECORDED IN PLAT CABINET B, SLIDE 75B, 76A, 76B

RECEIVED FOR RECORD AT 1:32 O'CLOCK P.M.

THIS 15<sup>TH</sup> DAY OF August, 2002.  
*Linda Hanson*  
RECORDER, LOGAN COUNTY, OHIO

INDIAN LAKE SANITARY SEWER DISTRICT

CONDOMINIUM DRAWING FOR  
PHASE III - 0.241 ACRE  
**HARBOURSIDE ON THE LAGOON  
CONDOMINIUMS**  
VILLAGE OF RUSSELLS POINT  
SECTION 36, TOWN 6, RANGE 8  
WASHINGTON TOWNSHIP  
LOGAN COUNTY, OHIO

PART OF THE  
INDIAN LAKE HARBOURSIDE LIMITED PARTNERSHIP  
AN OHIO LIMITED PARTNERSHIP  
ORIGINAL 7.424 ACRES  
OFFICIAL RECORD 23, PAGE 93  
AND ALL OF THE ORIGINAL 0.016 ACRE  
OFFICIAL RECORD 494, PAGE 861

WE DO HEREBY STATE THAT THESE DRAWINGS OF HARBOURSIDE ON THE LAGOON CONDOMINIUMS, PHASE III SHOW ALL BUILDINGS AS CONSTRUCTED.

*Michael W. Bow*  
MICHAEL W. BOW  
PROFESSIONAL ENGINEER 38860  
JUNE 21, 2002

*Jeffrey J. Lee*  
JEFFREY J. LEE  
PROFESSIONAL SURVEYOR 6359  
JUNE 21, 2002



**THE M & K ENGINEERING CO.**  
1691 T.R. 31 NORTH  
BELLEFONTAINE, OHIO 43311  
(937) 592-2697

**LEE SURVEYING AND MAPPING CO., INC.**  
117 NORTH MADRIVER STREET  
BELLEFONTAINE, OHIO, 43311  
(937) 593-7335



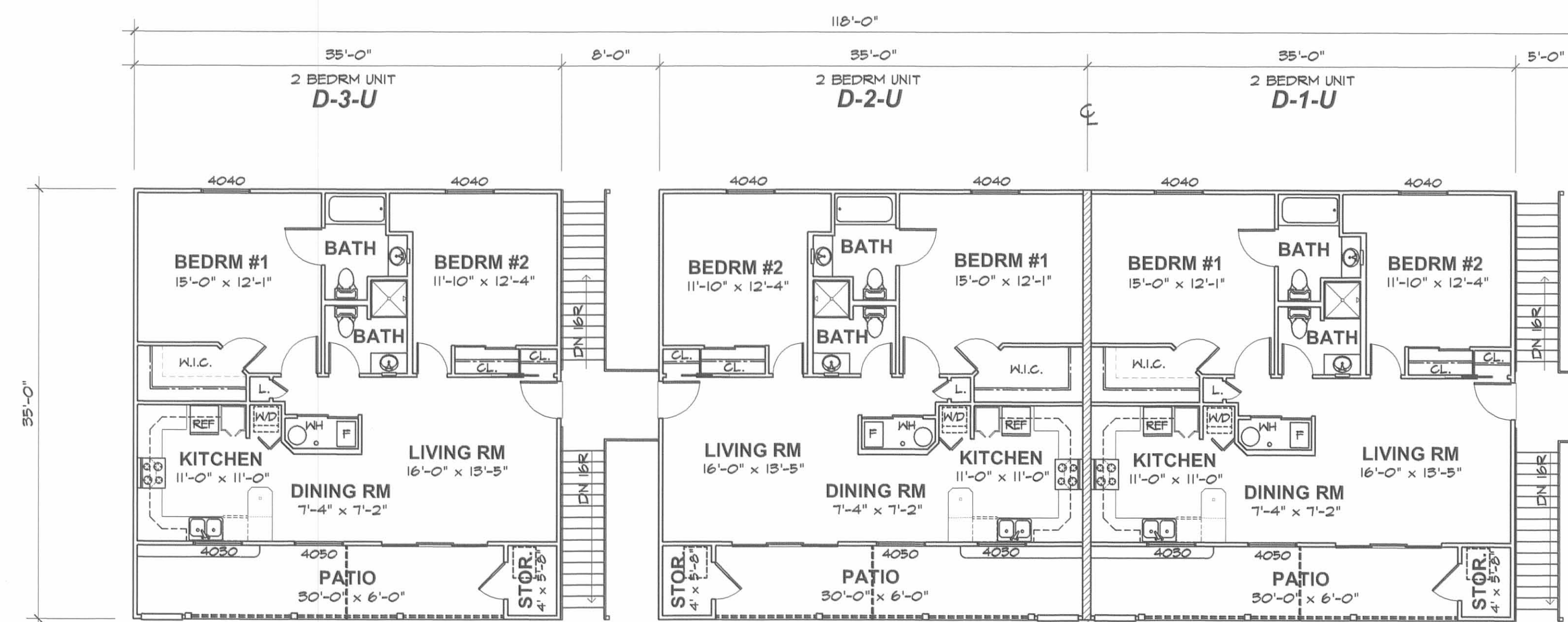
2 WORKING DAYS  
**BEFORE YOU DIG**  
CALL TOLL FREE 800-362-2764  
OHIO UTILITIES PROTECTION SERVICE.

COPYRIGHT 2002 BY:  
**LEE SURVEYING & MAPPING CO., INC.**  
117 North Madriver Street  
Bellefontaine, Ohio 43311  
(937) 593-7335  
D-396 HRBRS03 HRBRSIDE.DAT L-1134-1

700000 & 8003

PREPARED BY:

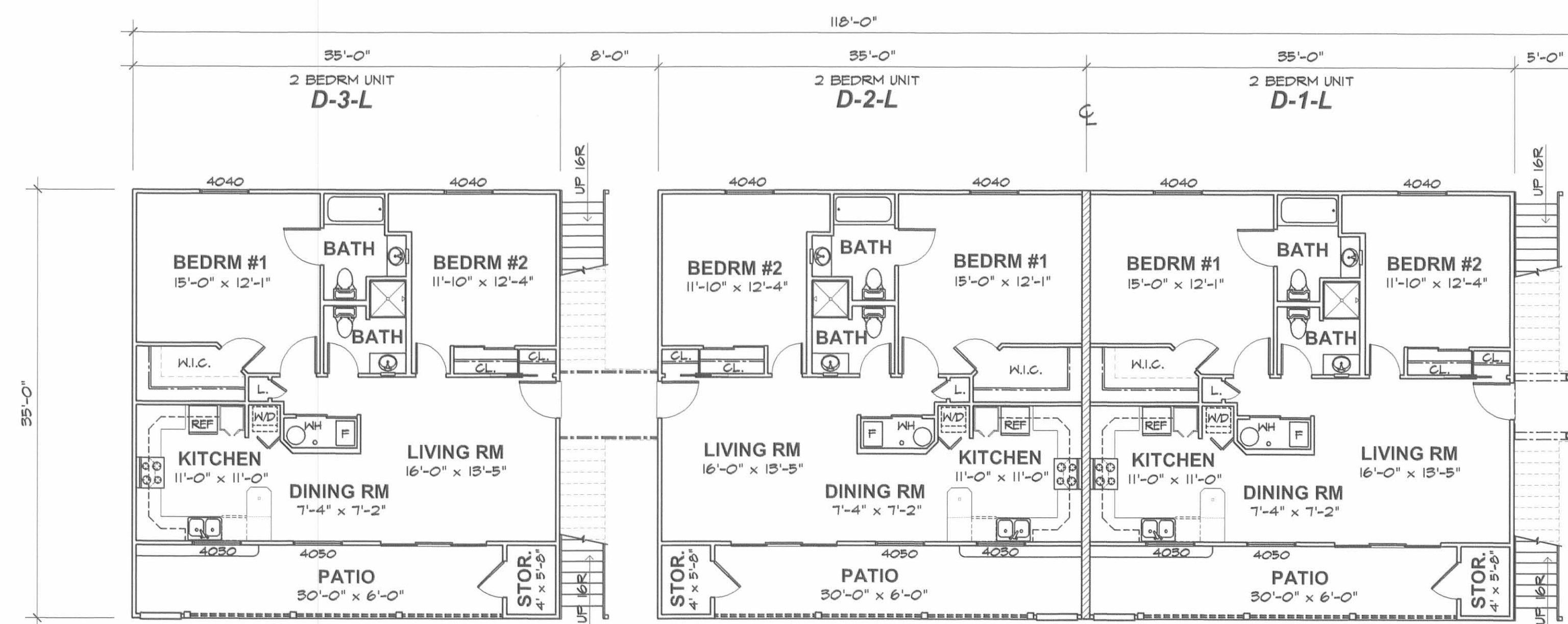
*Michael W. Bow* 7/8/2002  
 MICHAEL W. BOW, P.E. DATE  
 THE M&K ENGINEERING CO.



UNIT DESIGNATION DESCRIPTION:  
 D-1-U = BUILDING "D"  
 CONDO #1  
 UPPER LEVEL

**SECOND FLOOR PLAN**

SCALE: 1/8" = 1'-0"



UNIT DESIGNATION DESCRIPTION:  
 D-1-L = BUILDING "D"  
 CONDO #1  
 LOWER LEVEL

**FIRST FLOOR PLAN**

SCALE: 1/8" = 1'-0"

**M & K ENGINEERING CO.**  
 P.O. BOX 1457  
 RUSSELLS POINT, OHIO

**NEW BUILDING "D" FOR:  
 HARBOURSIDE ON THE LAGOON  
 RUSSELLS POINT, OHIO**

SHEET

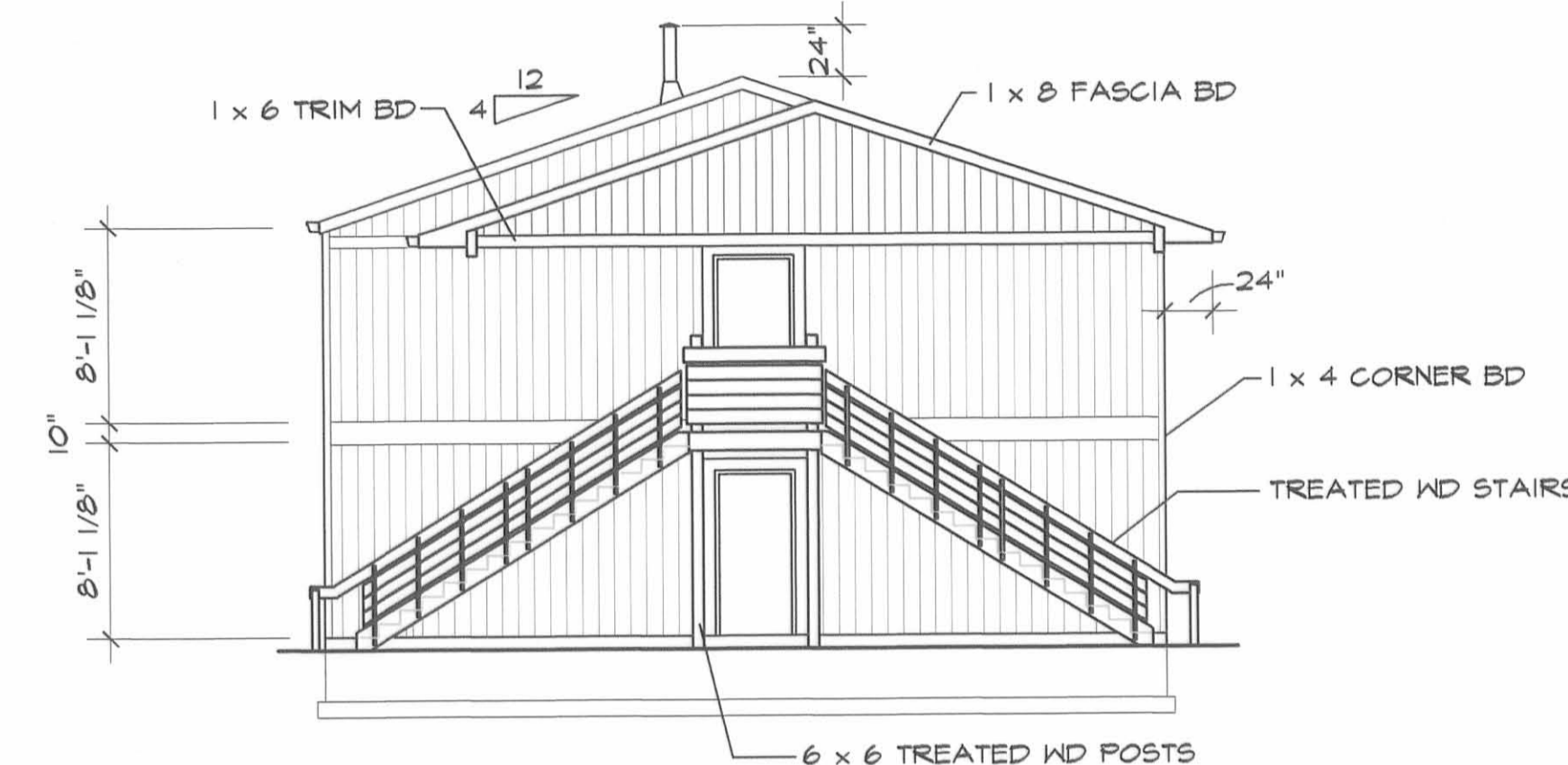
**2**

SHEET 2 OF 3



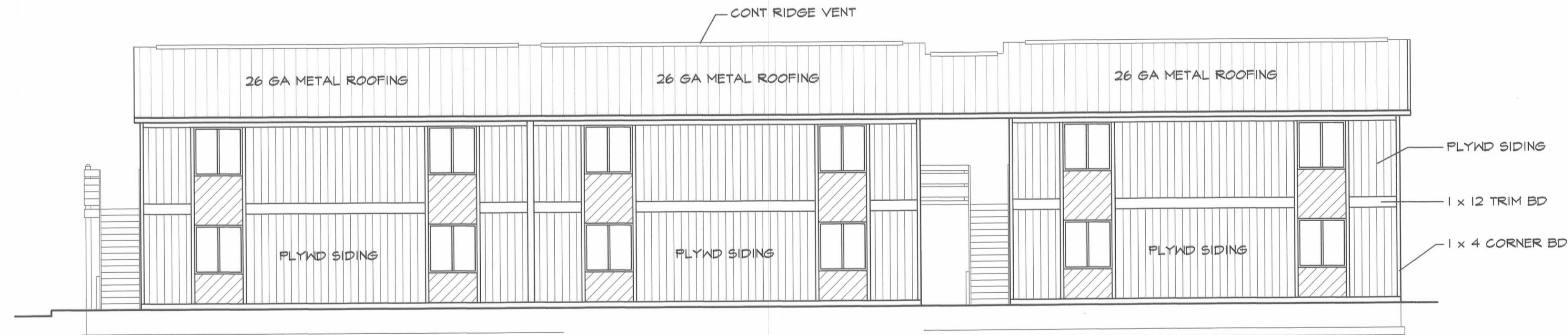
**WATER SIDE ELEVATION FRONT**

SCALE: 1/8" = 1'-0"



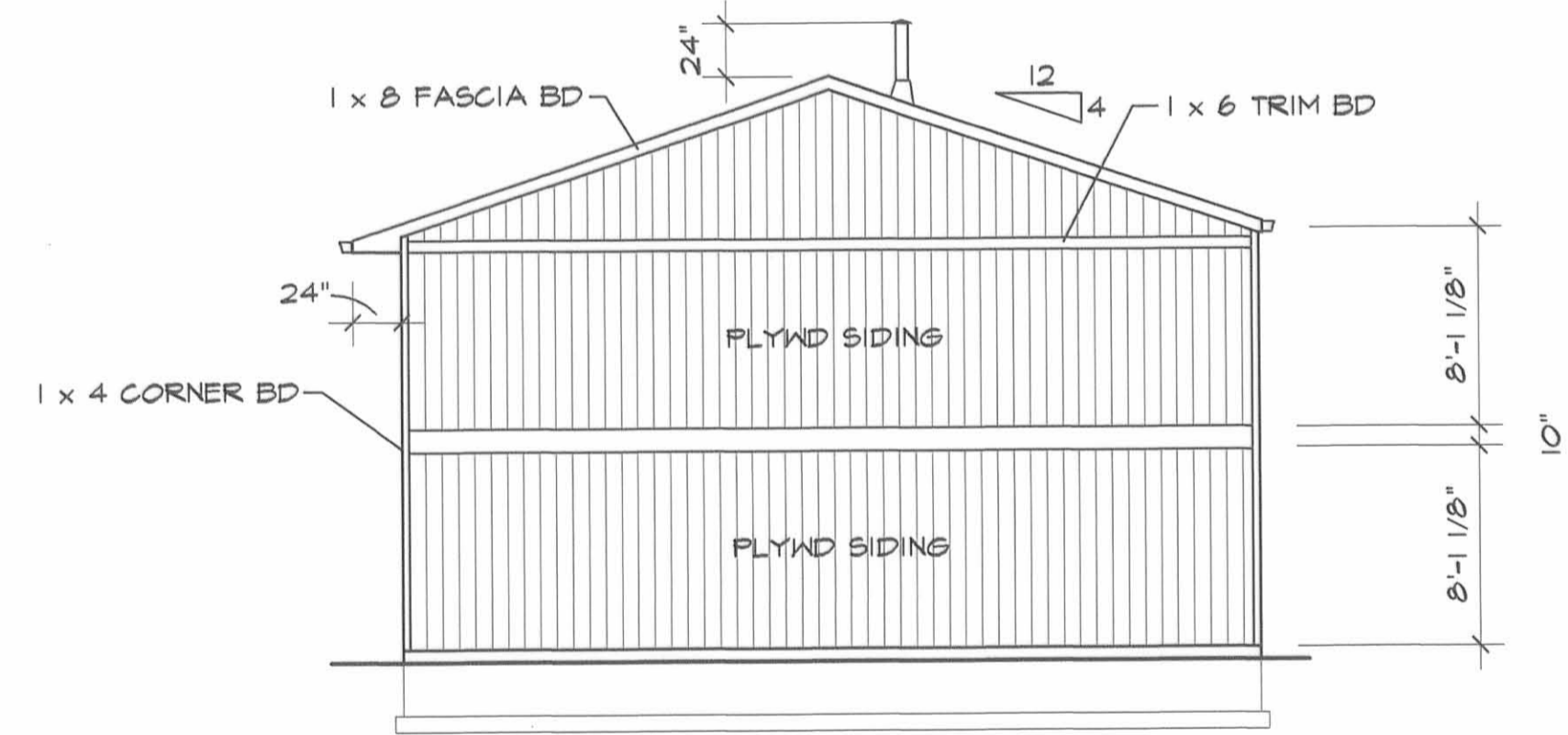
**SIDE ELEV RIGHT**

SCALE: 1/8" = 1'-0"



**PARKING SIDE ELEVATION REAR**

SCALE: 1/8" = 1'-0"



**SIDE ELEV LEFT**

SCALE: 1/8" = 1'-0"

PREPARED BY:

*Michael W. Bow* 7/8/2002  
 MICHAEL W. BOW, P.E. DATE  
 THE M&K ENGINEERING CO.



**M & K ENGINEERING CO.**  
 P.O. BOX 1457  
 RUSSELLS POINT, OHIO

**NEW BUILDING "D" FOR:**  
**HARBOURSIDE ON THE LAGOON**  
 RUSSELLS POINT, OHIO

|||  
 SHEET

**3**  
 SHEET 3 OF 3