

2 WORKING DAYS
BEFORE YOU DIG 216
CALL TOLL FREE 800-362-2764



THE M & K ENGINEERING CO., INC.
322 East Main Street
RUSSELLS POINT, OHIO 43348
(937) 842-2698

LEE SURVEYING & MAPPING CO., INC.
117 North Madison Street
BELLEFONTAINE, OHIO 43311
(937) 593-7353



APPROVED BY THE L.U.C. PLANNING COMMISSION
THIS 1st DAY OF September 1992.

DIRECTOR PLANNING COMMISSION
PRE-APPROVAL *Jan E. Hines* 9-1-92
PLAT CHECKED *Stephanie M. McElroy* 9-3-92
TRANSFERRED THIS 3rd DAY OF September 1992.

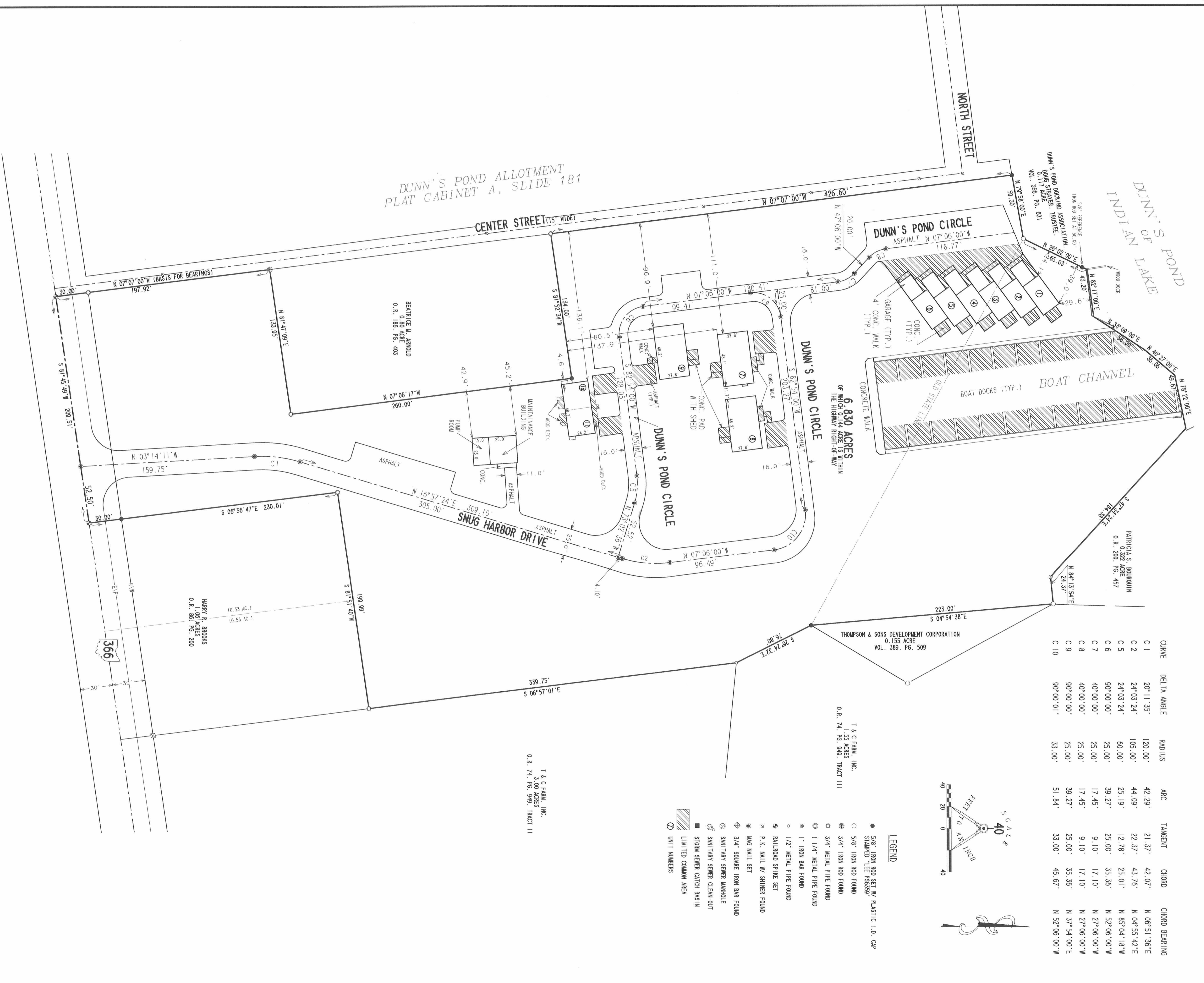
AUDITOR LOGAN COUNTY OHIO
RECORDED IN PLAT CABINET B, SLIDE 424, 43A
RECEIVED FOR RECORD AT 10:39:00 O'CLOCK A.M.
THIS 3rd DAY OF September 1992.

RECORDER LOGAN COUNTY, OHIO
Robert J. Collins

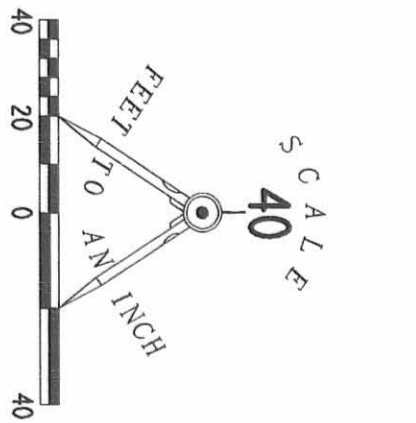
SNUG HARBOR CONDOMINIUM AT DUNN'S POND

6.830 ACRES
VIRGINIA MILITARY SURVEY 9925-9946-10121
WASHINGTON TOWNSHIP
LOGAN COUNTY, OHIO

9908625
Plat Cab B Side 42A



CURVE	DELTA ANGLE	RADIUS	ARC	TANGENT	CHORD	CHORD BEARING
C 1	20° 11' 35"	120.00'	42.29'	21.37'	42.07'	N 06° 51' 36" E
C 2	24° 03' 24"	105.00'	44.09'	22.37'	43.76'	N 04° 55' 42" E
C 5	24° 03' 24"	60.00'	25.19'	12.78'	25.01'	N 85° 04' 18" W
C 6	90° 00' 00"	25.00'	39.27'	25.00'	35.36'	N 52° 06' 00" W
C 7	40° 00' 00"	25.00'	17.45'	9.10'	17.10'	N 27° 06' 00" W
C 8	40° 00' 00"	25.00'	17.45'	9.10'	17.10'	N 27° 06' 00" W
C 9	90° 00' 00"	25.00'	39.27'	25.00'	35.36'	N 37° 54' 00" E
C 10	90° 00' 01"	33.00'	51.84'	33.00'	46.67'	N 52° 06' 00" W



- LEGEND**
- 5/8" IRON ROD SET W/ PLASTIC I.D. CAP
 - STAMPED LEE 38859
 - 5/8" IRON ROD FOUND
 - 3/4" IRON ROD FOUND
 - 3/4" METAL PIPE FOUND
 - 1 1/4" METAL PIPE FOUND
 - 1" IRON BAR FOUND
 - 1/2" METAL PIPE FOUND
 - BALLROAD SPIKE SET
 - P.K. MAIL W/ SHIRER FOUND
 - MAG MAIL SET
 - 3/4" SQUARE IRON BAR FOUND
 - SANITARY SENER MANHOLE
 - SANITARY SENER CLEAN-OUT
 - STORM SENER CATCH BASIN
 - ▨ LIMITED COMMON AREA
 - ⑦ UNIT NUMBERS