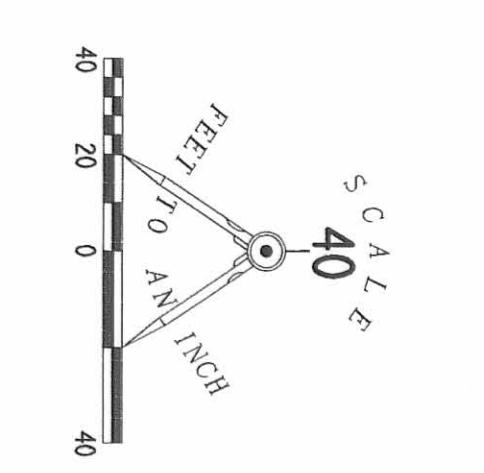


Plat Cab B Slide 67B

CURVE	DELTA ANGLE	RADIUS	ARC	TANGENT	CHORD	CHORD BEARING
C 1	20° 11' 35"	120.00'	42.29'	21.37'	42.07'	N 06° 51' 36" E
C 2	24° 03' 24"	105.00'	44.09'	22.37'	43.76'	N 04° 55' 42" E
C 5	24° 03' 24"	60.00'	25.19'	12.78'	25.01'	N 85° 04' 18" W
C 6	90° 00' 00"	25.00'	39.27'	25.00'	33.36'	N 52° 06' 00" W
C 7	40° 00' 00"	25.00'	17.45'	9.10'	17.10'	N 27° 06' 00" W
C 8	40° 00' 00"	25.00'	17.45'	9.10'	17.10'	N 27° 06' 00" W
C 9	90° 00' 00"	25.00'	39.27'	25.00'	33.36'	N 37° 54' 00" E
C 10	90° 00' 01"	33.00'	51.84'	33.00'	46.67'	N 52° 06' 00" W

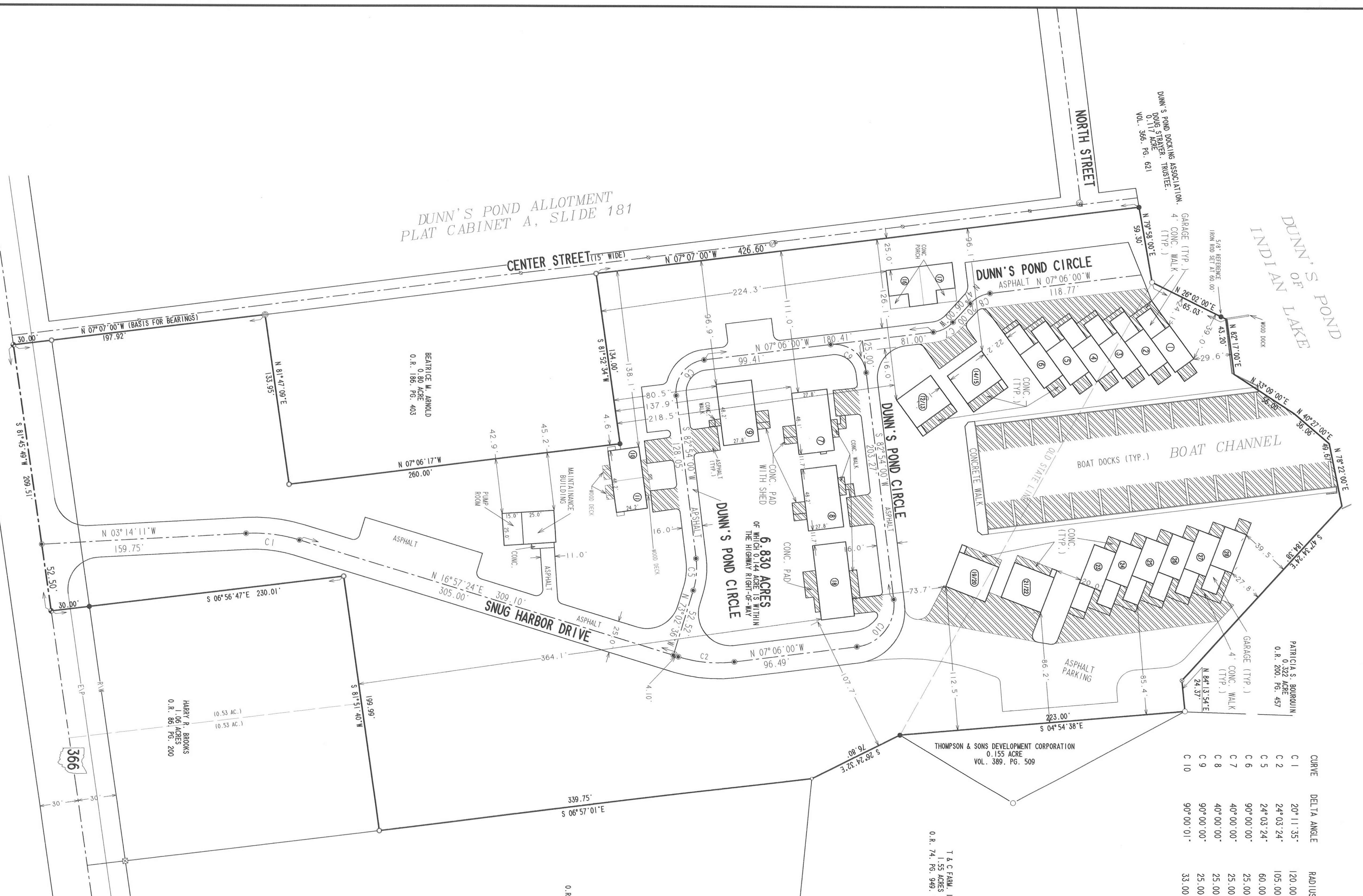


LEGEND

- 5/8" IRON ROD SET W/ PLASTIC I.D. CAP
- STAMPED "LEE P68599"
- 5/8" IRON ROD FOUND
- ⊕ 3/4" IRON ROD FOUND
- 3/4" METAL PIPE FOUND
- 1 1/4" METAL PIPE FOUND
- 1" IRON BAR FOUND
- 1/2" METAL PIPE FOUND
- ⚡ RAILROAD SPIKE SET
- ⚡ P.K. NAIL W/ SHINER FOUND
- ⚡ MAG NAIL SET
- ⊕ 3/4" SQUARE IRON BAR FOUND
- ⊕ SANITARY SEWER MANHOLE
- ⊕ SANITARY SEWER CLEAN-OUT
- ⊕ STORM SEWER CATCH BASIN
- ▨ LIMITED COMMON AREA
- ⑦ UNIT NUMBERS

T & C FARM, INC.
1.55 ACRES
O.R. 74, PG. 949, TRACT 111

T & C FARM, INC.
3.30 ACRES
O.R. 74, PG. 949, TRACT 11



**SNUG HARBOR CONDOMINIUM
AT DUNN'S POND
AMENDMENT NUMBER 2**

6.830 ACRES
VIRGINIA MILITARY SURVEY 9925-9946-10121
PLAT CABINET B, SLIDES 49B - 50B
WASHINGTON TOWNSHIP
LOGAN COUNTY, OHIO

ALL OF THE
DUNN'S POND ASSOCIATES, LTD.
ORIGINAL 6.830 ACRES
OFFICIAL RECORD 272, PAGE 238

WE DO HEREBY STATE THAT THIS DRAWING OF SNUG HARBOR CONDOMINIUMS
SHOWS ALL BUILDINGS AS CONSTRUCTED.

Michael W. Bow
MICHAEL W. BOW
PROFESSIONAL ENGINEER 38880
AUGUST 16, 2001

Jeffrey L. Lee
JEFFREY L. LEE
PROFESSIONAL SURVEYOR 6339
AUGUST 16, 2001

Lee Surveying & Mapping Co., Inc.
LEE SURVEYING & MAPPING CO., INC.
BELLEFONTAINE, OHIO 43103
(937) 593-7335

APPROVED BY THE L.U.C. PLANNING COMMISSION
THIS 17 DAY OF SEPTEMBER, 2001.

Stephanie A. Adams
DIRECTOR, PLANNING COMMISSION
9-17-01

Don A. Davis
PRE-APPROVAL
9-19-01

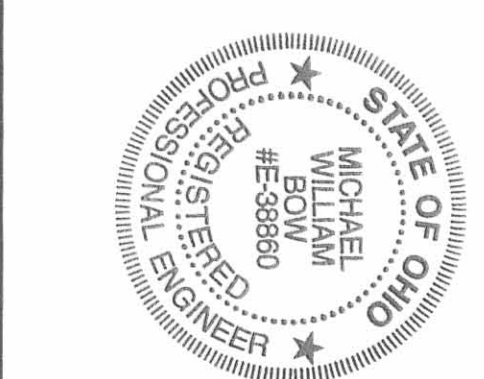
PLAT CHECKED BY Don A. Davis
TRANSFERRED THIS 19th DAY OF September, 2001.

Michael E. Hagan
AUDITOR, LOGAN COUNTY, OHIO

RECORDED IN PLAT CABINET B, SLIDE 67B-68B
RECEIVED FOR RECORD AT 11:37 O'CLOCK A.M.
THIS 19th DAY OF September, 2001.

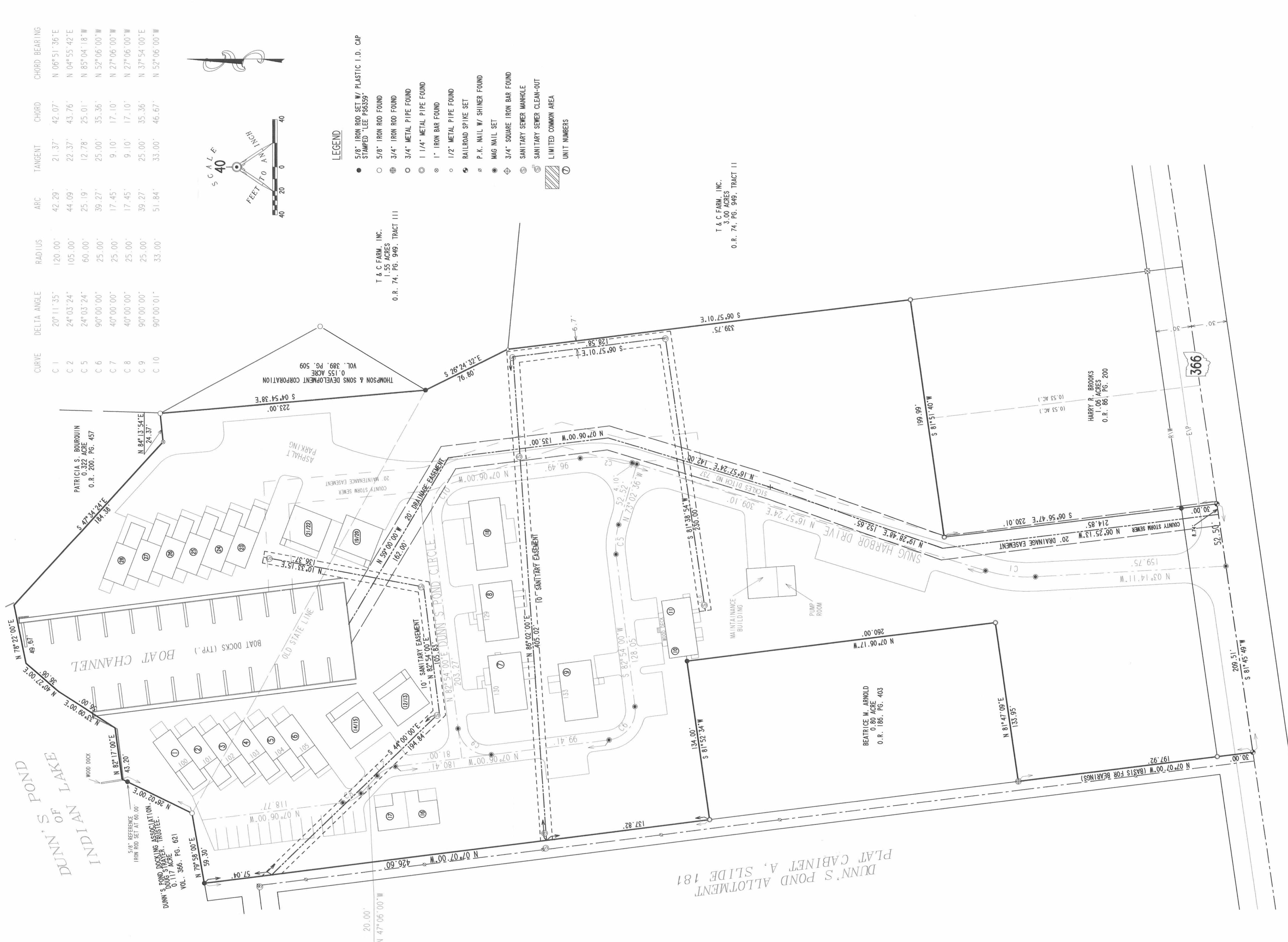
Stephanie A. Adams
RECORDER, LOGAN COUNTY, OHIO

2 WORKING DAYS
BEFORE YOU DIG
CALL TOLL FREE 800-362-2764

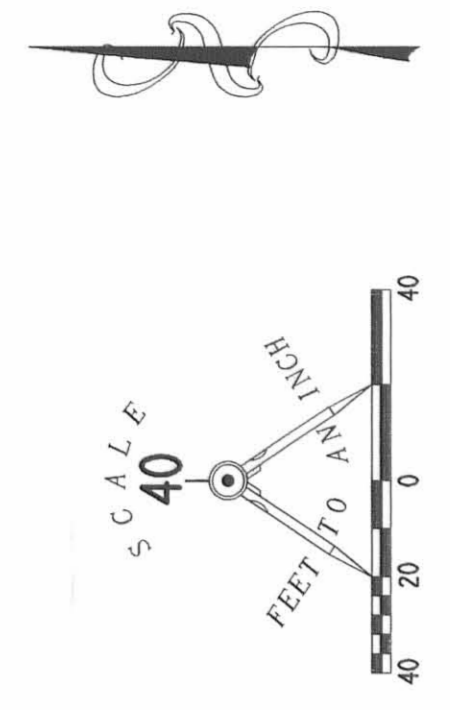


Plat Cab B Slide 68A
 J-299 B

2
 3



CURVE	DELTA ANGLE	RADIUS	ARC	TANGENT	CHORD	CHORD BEARING
C 1	20°11'35"	120.00'	42.29'	21.37'	42.07'	N 06°51'36"E
C 2	24°03'24"	105.00'	44.09'	22.37'	43.76'	N 04°55'42"E
C 5	24°03'24"	60.00'	25.19'	12.78'	25.01'	N 85°04'18"W
C 6	90°00'00"	25.00'	39.27'	25.00'	35.36'	N 52°06'00"W
C 7	40°00'00"	25.00'	17.45'	9.10'	17.10'	N 27°06'00"W
C 8	40°00'00"	25.00'	17.45'	9.10'	17.10'	N 27°06'00"W
C 9	90°00'00"	25.00'	39.27'	25.00'	35.36'	N 37°54'00"E
C 10	90°00'01"	33.00'	51.84'	33.00'	46.67'	N 52°06'00"W



- LEGEND**
- 5/8" IRON ROD SET W/ PLASTIC I.D. CAP STAMPED "LEE P66559"
 - 5/8" IRON ROD FOUND
 - ⊕ 3/4" IRON ROD FOUND
 - 3/4" METAL PIPE FOUND
 - 1 1/4" METAL PIPE FOUND
 - ⊗ 1" IRON BAR FOUND
 - 1/2" METAL PIPE FOUND
 - ⚡ RAILROAD SPIKE SET
 - ⊙ P.K. NAIL W/ SHINER FOUND
 - ⊙ MAG NAIL SET
 - ⊕ 3/4" SQUARE IRON BAR FOUND
 - ⊕ SANITARY SEWER MANHOLE
 - ⊕ SANITARY SEWER CLEAN-OUT
 - ▨ LIMITED COMMON AREA
 - ① UNIT NUMBERS

T & C FARM, INC.
 1.55 ACRES
 O.R. 74, PG. 949, TRACT III

T & C FARM, INC.
 3.06 ACRES
 O.R. 74, PG. 949, TRACT II

HARRY R. BROOKS
 1.06 ACRES
 O.R. 86, PG. 200

BEATRICE M. ARNOLD
 0.18 ACRES
 O.R. 186, PG. 403

EASEMENTS DRAWING
SNUG HARBOR CONDOMINIUM
AT DUNN'S POND
AMENDMENT NUMBER 2

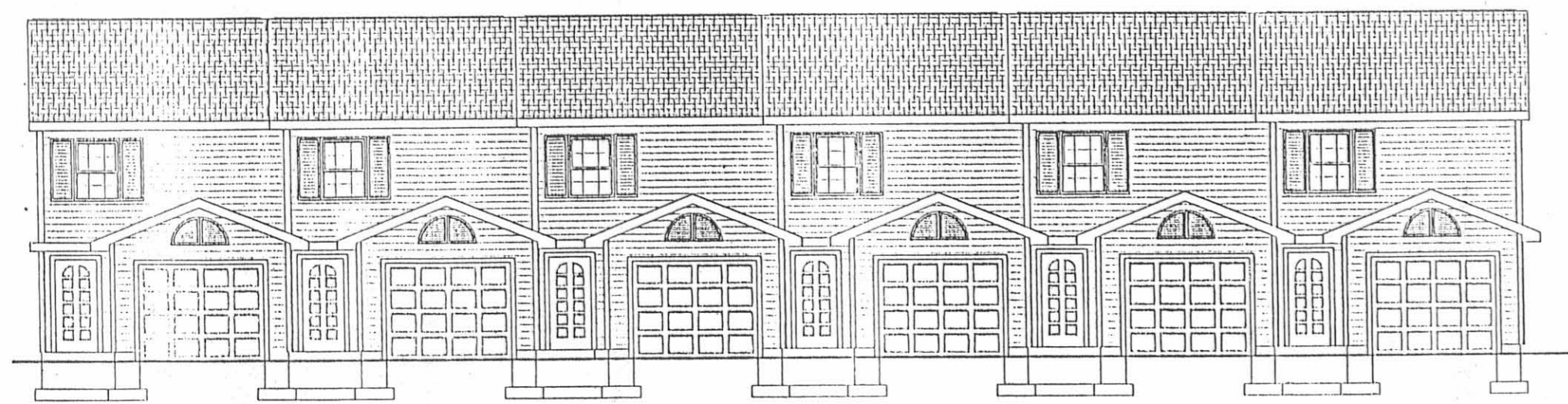
6.830 ACRES
 VIRGINIA MILITARY SURVEY 9925-9946-10121
 PLAT CABINET B, SLIDES 49B-50B
 WASHINGTON TOWNSHIP
 LOGAN COUNTY, OHIO

ALL OF THE
 DUNN'S POND ASSOCIATES, LTD.
 ORIGINAL 6.830 ACRES
 OFFICIAL RECORD 272, PAGE 238

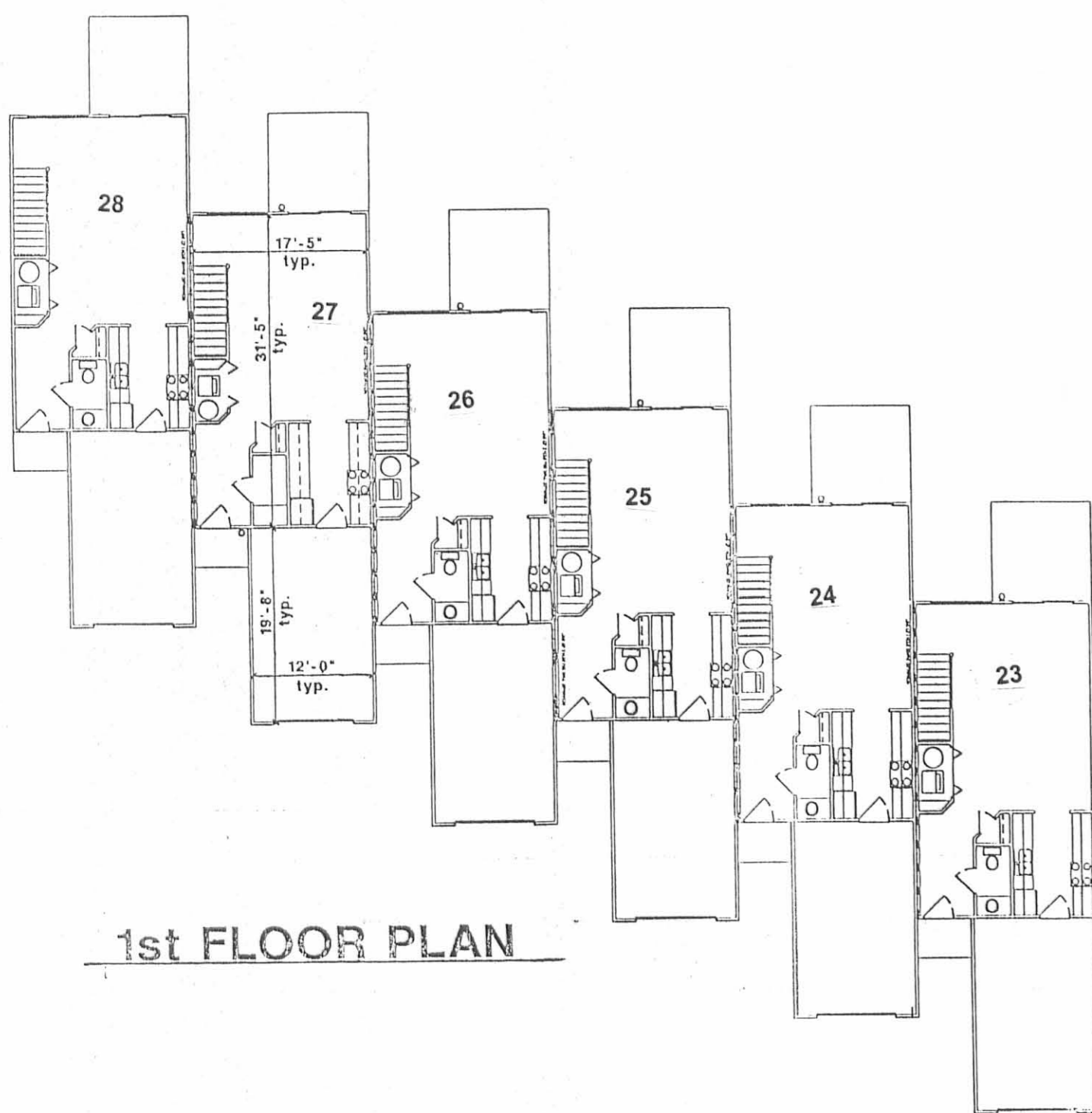
DUNN'S POND ALLOTMENT 181
 PLAT CABINET A, SLIDE 181

J-299 B

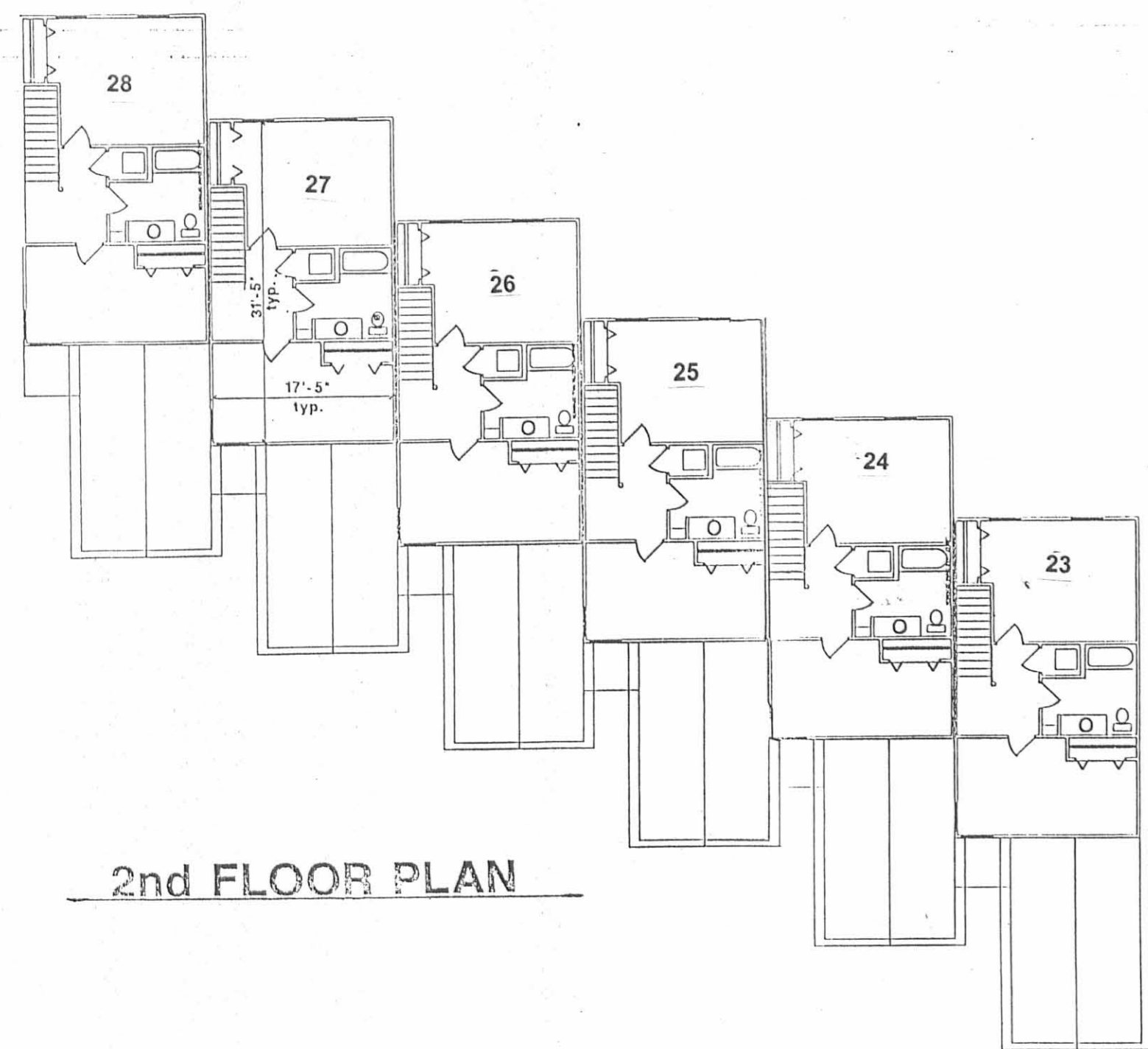
Plat Cab B Slide 6.8 B



FRONT ELEVATION



1st FLOOR PLAN

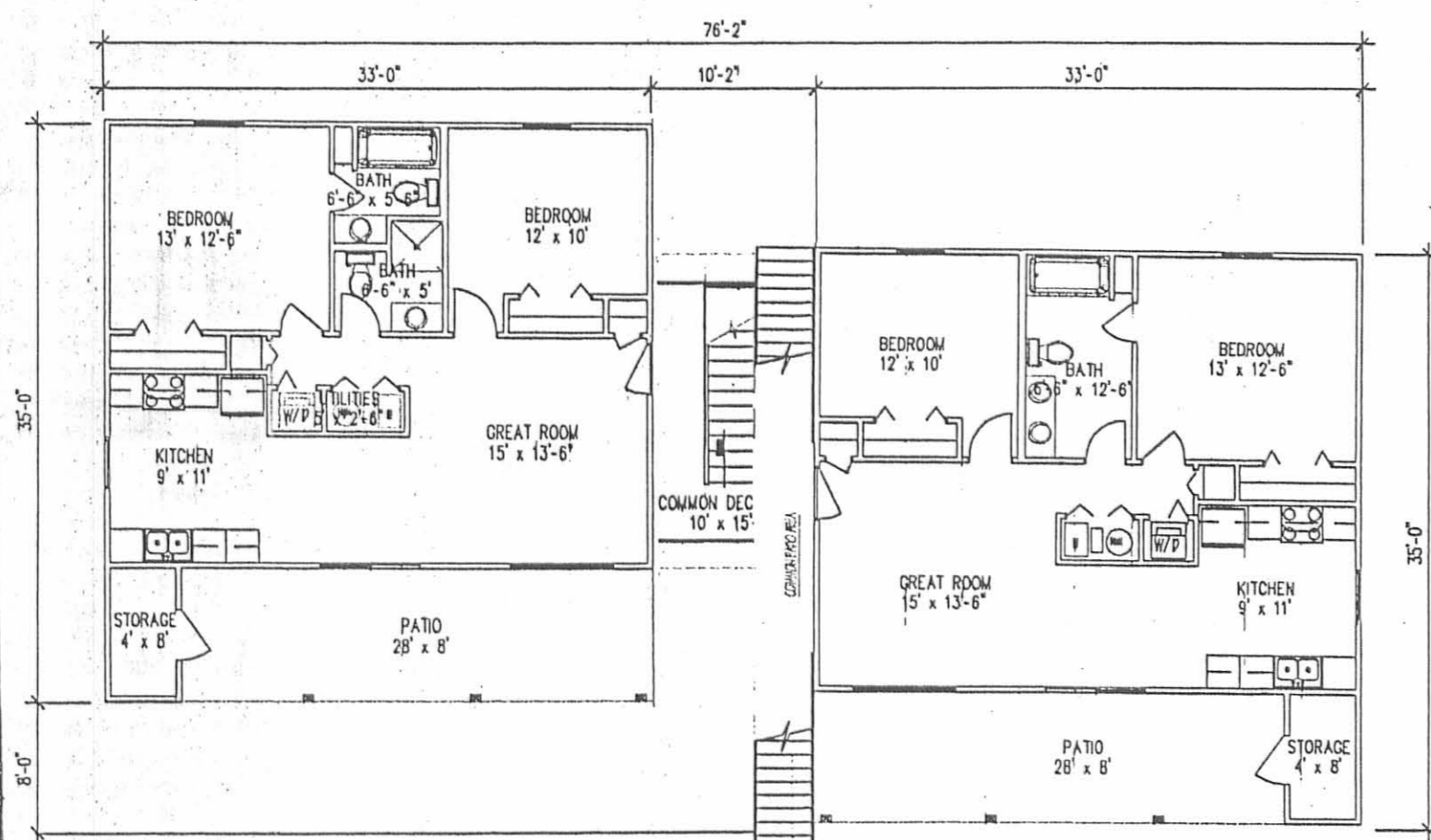


2nd FLOOR PLAN

UNITS # 23 - #28

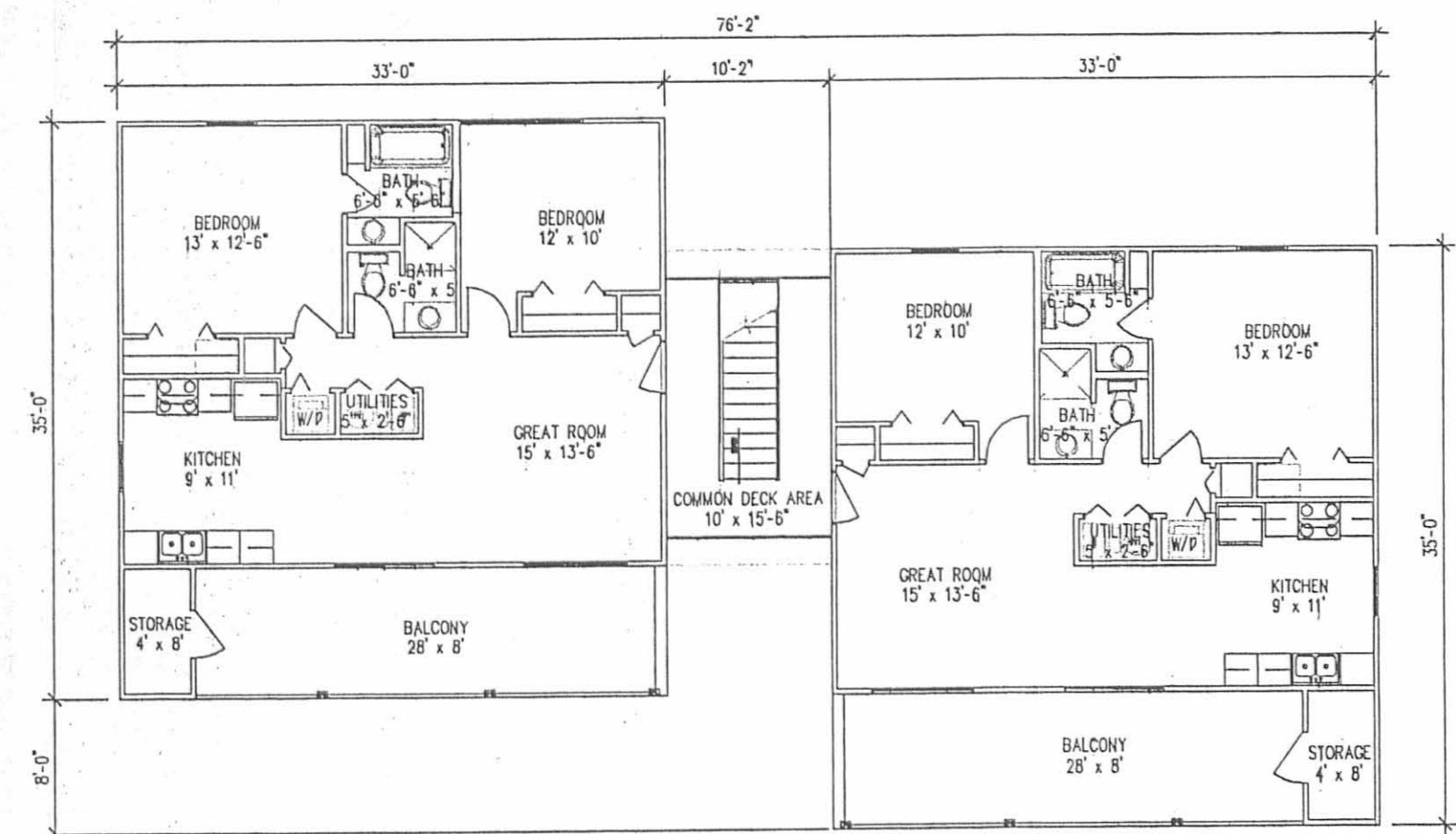


QUAD ELEVATION (LAKE SIDE)



QUAD FIRST FLOOR PLAN (right)

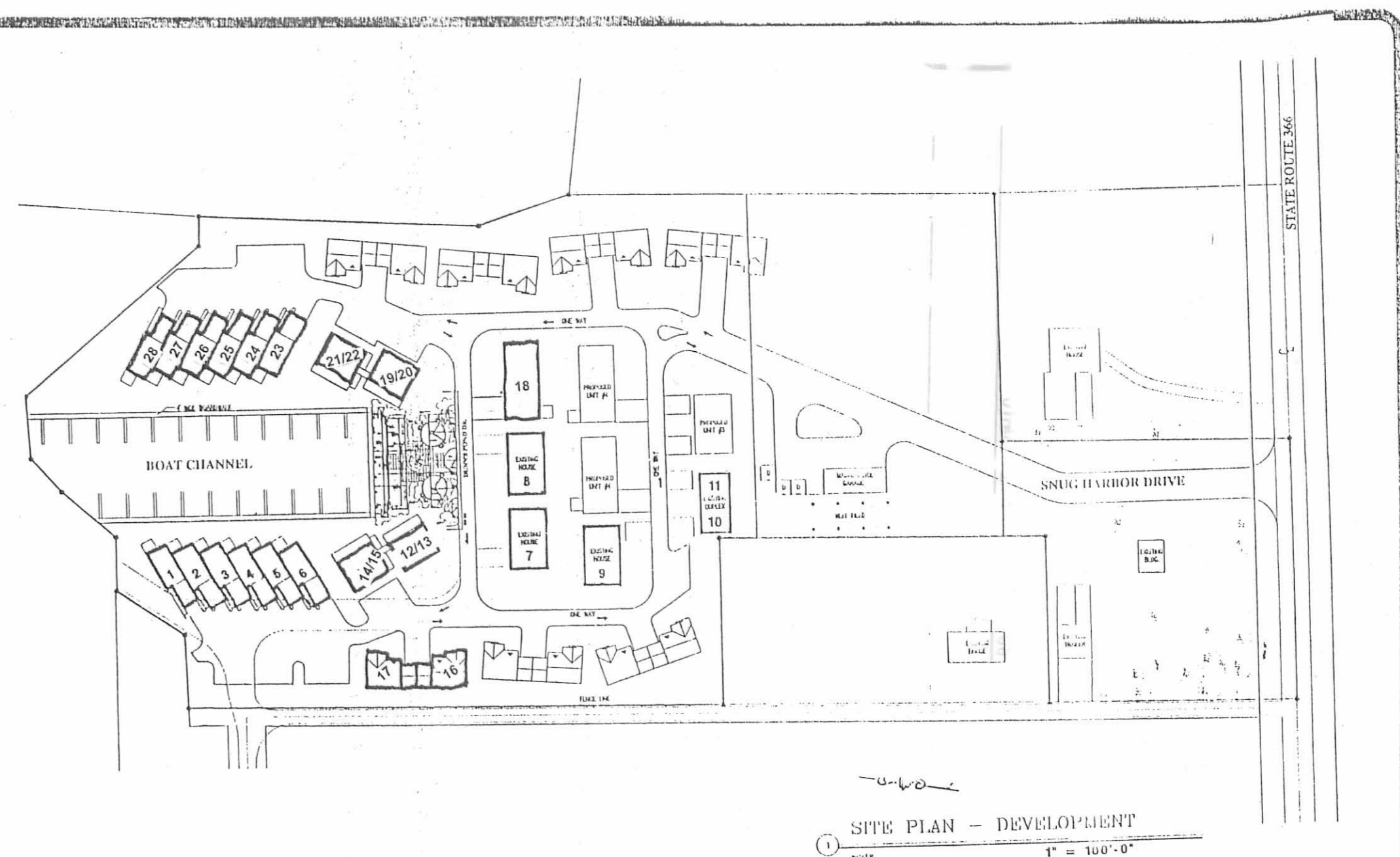
QUAD FIRST FLOOR PLAN (left)



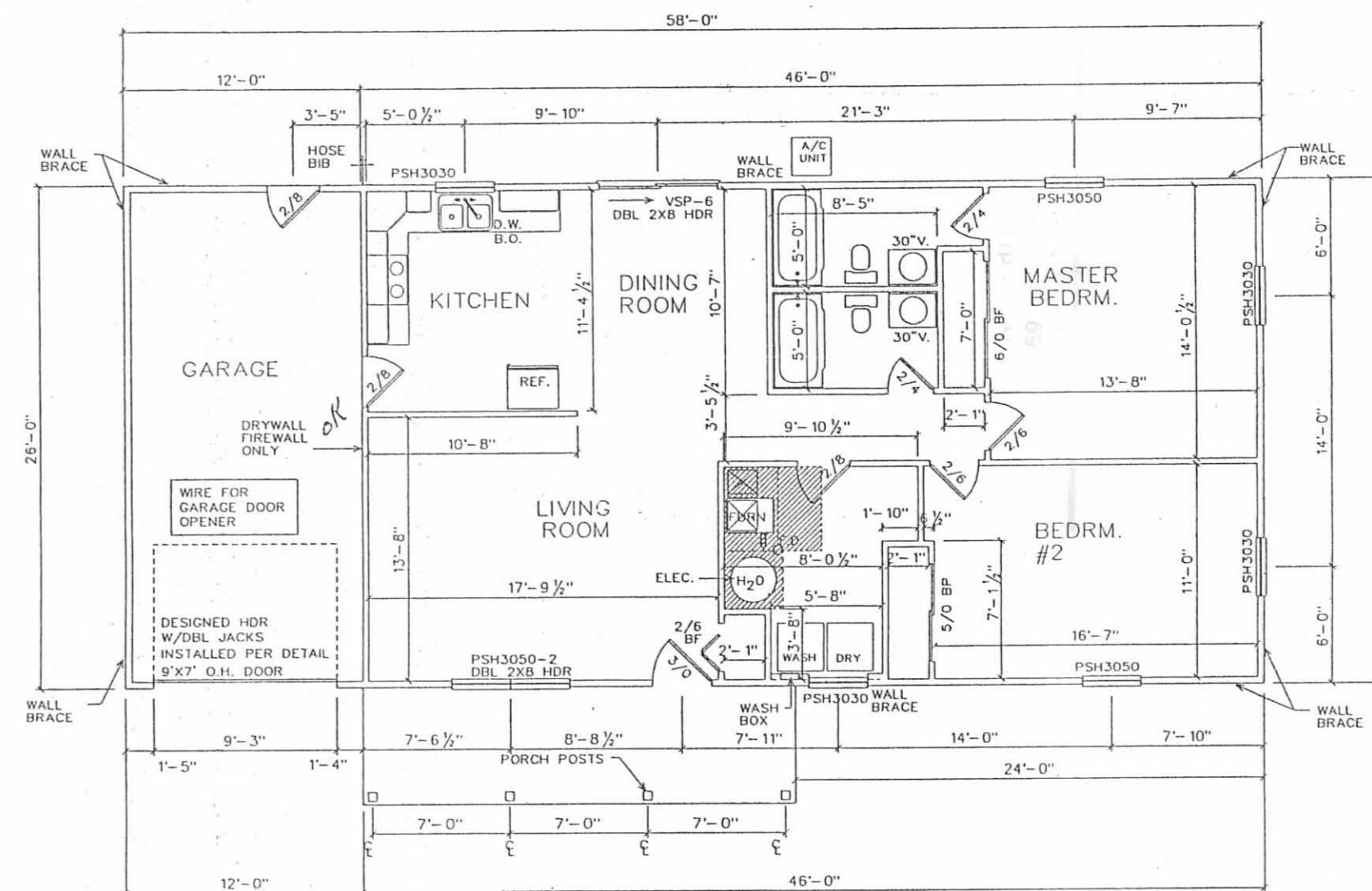
QUAD SECOND FLOOR PLAN (left)

QUAD SECOND FLOOR PLAN (right)

UNITS # 19 - #22

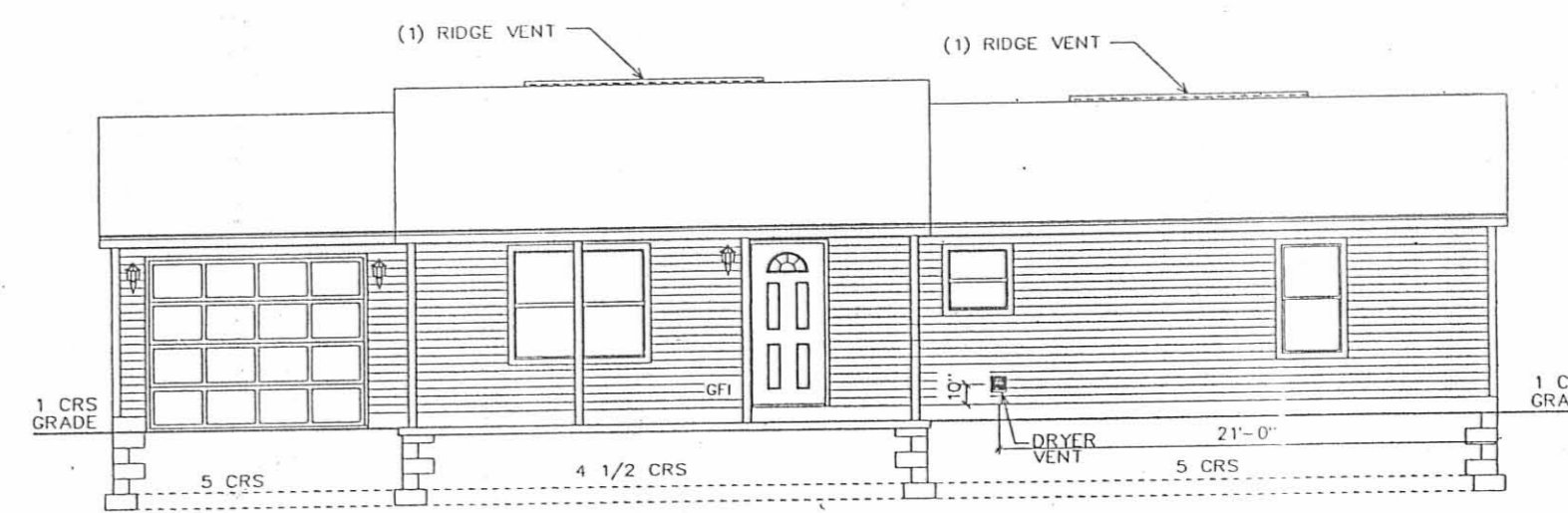


SITE PLAN - DEVELOPMENT



FLOOR PLAN

UNIT #18



ELEVATION

REVISIONS	BY

SNUG HARBOR CONDOMINIUMS
 AT DUNN'S POND
 LOGAN COUNTY
 RUSSELL'S POINT, OHIO 43348

DRAWN
CHECKED
DATE
SCALE
N.T.S.
JOB NO.
SHEET
3 OF 3
OF SHEETS