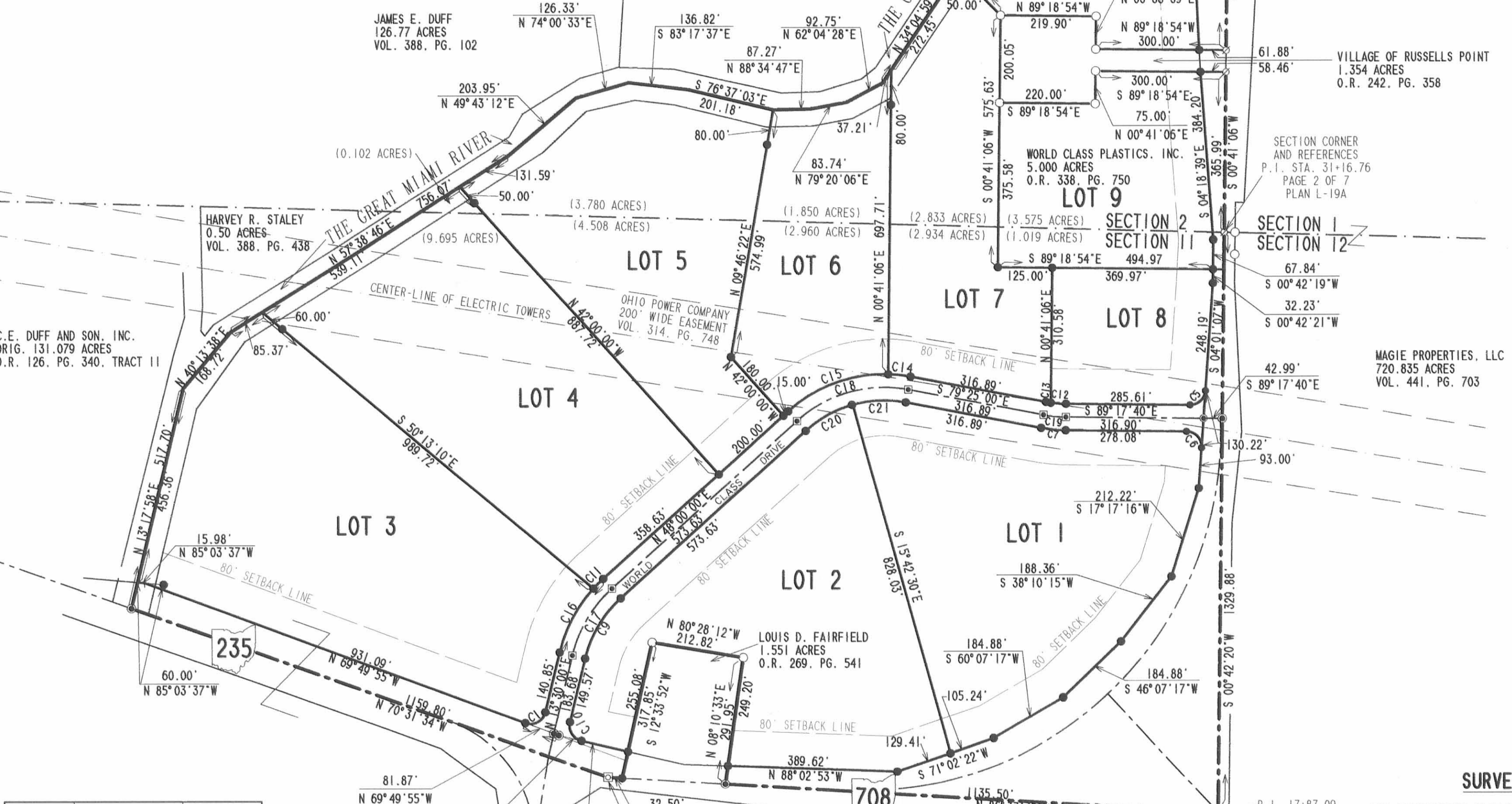


INDIAN LAKE INDUSTRIAL PARK

SECTIONS 2 AND 11, TOWN 7, RANGE 8
WASHINGTON TOWNSHIP
LOGAN COUNTY, OHIO

CURVE	DELTA ANGLE	RADIUS	ARC	TANGENT	CHORD	CHORD BEARING
C 1	96°40'05"	35.00'	59.05'	39.33'	52.29'	N 61°50'02"E
C 2	34°30'00"	330.00'	198.71'	102.47'	195.72'	N 30°45'00"E
C 3	52°35'00"	330.00'	302.86'	163.04'	292.34'	N 74°17'30"E
C 4	9°52'40"	270.00'	46.55'	23.33'	46.49'	S 84°21'20"E
C 5	86°41'13"	35.00'	52.95'	33.03'	48.05'	N 47°21'43"E
C 6	93°18'47"	35.00'	57.00'	37.08'	50.91'	N 42°38'17"W
C 7	9°52'40"	330.00'	56.89'	28.52'	56.82'	N 84°21'20"W
C 8	52°35'00"	270.00'	247.79'	133.39'	239.19'	S 74°17'30"W
C 9	34°30'00"	270.00'	162.58'	83.84'	160.13'	S 30°45'00"W
C 10	90°35'20"	35.00'	55.34'	35.36'	49.75'	S 31°47'40"E
C 11	5°27'14"	330.00'	31.41'	15.72'	31.40'	S 45°16'23"W
C 12	7°26'28"	270.00'	35.07'	17.56'	35.04'	N 85°34'26"W
C 13	2°26'12"	270.00'	11.48'	5.74'	11.48'	N 80°38'05"W
C 14	8°59'12"	330.00'	51.76'	25.93'	51.71'	N 83°54'36"W
C 15	43°35'48"	330.00'	251.10'	131.98'	245.08'	S 69°47'54"W
C 16	29°02'46"	330.00'	167.29'	85.49'	165.51'	S 28°01'23"W
C 17	34°30'00"	300.00'	180.64'	93.15'	177.92'	N 30°45'00"E
C 18	52°35'00"	300.00'	275.33'	148.21'	265.76'	N 74°17'30"E
C 19	9°52'40"	300.00'	51.72'	25.92'	51.66'	S 84°21'20"E
C 20	26°17'30"	270.00'	123.90'	63.06'	122.81'	N 61°08'45"E
C 21	26°17'30"	270.00'	123.90'	63.06'	122.81'	N 87°26'15"E



LOT #	SQUARE FEET	ACREAGE
1	408070.08	9.368
2	395307.00	9.075
3	521805.24	11.956
4	426757.32	9.797
5	361025.28	8.288
6	209523.60	4.808
7	251210.52	5.767
8	113212.44	2.599
9	200114.64	4.594
10	270856.08	6.218
TOTAL		72.470

LOGAN COUNTY ENGINEER'S FILES:
FIELD BOOK 471, PAGES 5-7
R-7052

DESCRIPTION

LYING IN SECTIONS 2 AND 11, TOWN 7, RANGE 8, WASHINGTON TOWNSHIP, LOGAN COUNTY, OHIO.

BEING OUT OF THE C.E. DUFF AND SON, INC. ORIGINAL 131.079 ACRE TRACT AS DEEDED AND DESCRIBED IN OFFICIAL RECORD 126, PAGE 340, TRACT 11 OF THE LOGAN COUNTY RECORDS OF DEEDS AND ALL OF THE WORLD CLASS PLASTICS, INC., 5.000 ACRE TRACT AS DEEDED AND DESCRIBED IN OFFICIAL RECORD 338, PAGE 750 OF THE LOGAN COUNTY RECORDS OF DEEDS AND BEING MORE PARTICULARLY DESCRIBED AS FOLLOWS:

BEGINNING AT A 1/2 INCH IRON ROD FOUND IN CONCRETE ON THE CENTER-LINE OF TOWNSHIP ROAD 61 AT THE INTERSECTION WITH THE CENTER-LINE OF OHIO ROUTE 708, (EXISTING S.R. 708 P.1, STATION 17-87.09).

THENCE, WITH THE CENTER-LINE OF OHIO ROUTE 708, N 86°37'49" W, A DISTANCE OF 1135.50 TO A MAG NAIL SET AT THE SOUTHEAST CORNER OF THE LOUIS D. FAIRFIELD 1.551 ACRE TRACT, (O.R. 269, PG. 541).

THENCE, WITH THE LINES OF THE SAID 1.551 ACRE TRACT THE FOLLOWING THREE (3) COURSES:

N 8°-10'-33" E, A DISTANCE OF 291.95 FEET TO A 5/8 INCH IRON ROD FOUND, PASSING A 5/8 INCH IRON ROD SET AT 42.75 FEET.

N 80°-28'-12" W, A DISTANCE OF 212.82 FEET TO A 5/8 INCH IRON ROD FOUND.

S 12°-33'-52" W, A DISTANCE OF 317.85 FEET TO A 5/8 INCH IRON ROD SET ON THE CENTER-LINE OF OHIO ROUTE 708, PASSING A 5/8 INCH IRON ROD SET AT 255.08 FEET.

THENCE, WITH THE CENTER-LINE OF OHIO ROUTES 708 AND 235, N 86°-37'-50" W, A DISTANCE OF 32.50 FEET TO A 1/2 INCH IRON ROD FOUND IN CONCRETE AT CENTER-LINE P.1, STATION 3-84.1.

THENCE, CONTINUING WITH THE CENTER-LINE OF OHIO ROUTE 708 AND THE CENTER-LINE OF OHIO ROUTE 235, N 70°-31'-34" W, A DISTANCE OF 1159.80 FEET TO A MAG NAIL SET ON THE CENTER-LINE OF THE GREAT MIAMI RIVER.

THENCE, WITH THE CENTER-LINE OF THE GREAT MIAMI RIVER, THE FOLLOWING FIFTEEN (15) COURSES:

N 13°-17'-58" E, A DISTANCE OF 517.70 FEET TO A POINT.

N 40°-13'-38" E, A DISTANCE OF 168.72 FEET TO A POINT.

N 57°-38'-46" E, A DISTANCE OF 756.07 FEET TO A POINT.

N 49°-43'-12" E, A DISTANCE OF 203.95 FEET TO A POINT.

N 74°-00'-33" E, A DISTANCE OF 126.33 FEET TO A POINT.

S 83°-17'-37" E, A DISTANCE OF 136.82 FEET TO A POINT.

S 76°-37'-03" E, A DISTANCE OF 201.18 FEET TO A POINT.

N 88°-34'-47" E, A DISTANCE OF 87.27 FEET TO A POINT.

N 79°-20'-06" E, A DISTANCE OF 83.74 FEET TO A POINT.

N 62°-04'-28" E, A DISTANCE OF 92.75 FEET TO A POINT.

N 34°-04'-59" E, A DISTANCE OF 575.77 FEET TO A POINT.

N 25°-52'-20" E, A DISTANCE OF 259.05 FEET TO A POINT.

N 51°-51'-11" E, A DISTANCE OF 118.64 FEET TO A POINT.

N 70°-42'-41" E, A DISTANCE OF 198.93 FEET TO A POINT.

N 79°-56'-25" E, A DISTANCE OF 85.41 FEET TO A MAG NAIL SET ON THE EAST LINE OF SECTION 2 AND THE CENTER-LINE OF OHIO ROUTE 708.

THENCE, WITH THE EAST LINE OF SECTION 2 AND THE CENTER-LINE OF OHIO ROUTE 708, S 0°-41'-06" W, A DISTANCE OF 790.08 FEET TO A P.K. NAIL FOUND ON THE NORTHEAST CORNER OF THE VILLAGE OF RUSSELLS POINT 1.354 ACRE TRACT, (O.R. 242, PG. 358).

THENCE, WITH THE LINES OF THE SAID 1.354 ACRE TRACT, THE FOLLOWING SEVEN (7) COURSES:

N 89°-18'-54" W, A DISTANCE OF 300.00 FEET TO A 5/8 INCH IRON ROD FOUND, PASSING A 5/8 INCH IRON ROD SET AT 61.88 FEET.

N 0°-36'-39" E, A DISTANCE OF 75.19 FEET TO A 5/8 INCH IRON ROD FOUND.

N 89°-18'-54" W, A DISTANCE OF 219.90 FEET TO A 5/8 INCH IRON ROD FOUND.

N 0°-41'-06" W, A DISTANCE OF 790.08 FEET TO A P.K. NAIL FOUND ON THE NORTHEAST CORNER OF SECTION 11.

THENCE, WITH THE EAST LINE OF SECTION 11 AND THE CENTER-LINE OF OHIO ROUTE 708, S 0°-42'-20" W, A DISTANCE OF 1329.88 FEET TO THE POINT OF BEGINNING.

CONTAINING 84.593 ACRES, OF WHICH 20.198 ACRE IS WITHIN SECTION 2 AND 64.395 ACRE IS WITHIN SECTION 11, AND 9.482 TOTAL IS WITHIN THE HIGHWAY RIGHTS-OF-WAY.

THE BASIS FOR BEARINGS IS THE CENTER-LINE OF OHIO ROUTE 708 NORTH OF THE INTERSECTION WITH THE CENTER-LINE OF TOWNSHIP ROAD 61, BEING N 0°-42'-20" E, AND ALL OTHER BEARINGS ARE FROM ANGLES AND DISTANCES MEASURED IN A FIELD SURVEY BY LEE SURVEYING AND MAPPING CO., INC. ON AUGUST 26, 1997.

DESCRIPTION PREPARED BY: JEFFREY I. LEE, PROFESSIONAL SURVEYOR 6359

- LEGEND
- MAG NAIL SET
 - 5/8" IRON ROD SET
 - 5/8 INCH IRON ROD SET IN A MONUMENT BOX
 - 5/8" IRON ROD FOUND
 - 1/2" IRON ROD FOUND IN CONCRETE
 - ⊙ P.K. NAIL FOUND

NOTES:

IN ADDITION TO OTHER EASEMENTS SHOWN OR NOTED, AN EXCLUSIVE TWO FEET DIAMETER EASEMENT IS RESERVED AT ALL PROPERTY CORNERS AND POINTS OF CURVATURE FOR MONUMENTATION. NO SURFACE OR BURIED UTILITIES OF ANY KIND MAY BE PLACED WITHIN THESE EASEMENT AREAS.

THE UTILITY EASEMENTS INDICATED ON THIS PLAT ARE FOR THE ERECTION, CONSTRUCTION, MAINTENANCE, REPAIR, AND INSTALLATION OF ANY OR ALL UTILITIES, BOTH PUBLIC AND PRIVATE FOR USE WITHIN INDIAN LAKE INDUSTRIAL PARK. IT SHALL BE LAWFUL FOR ANY SUCH UTILITY, PUBLIC OR PRIVATE, OR ITS EMPLOYEES OR REPRESENTATIVES OR ANYONE ACTING FOR ANY SUCH UTILITY TO ENTER UPON SAID EASEMENT OR RIGHT-OF-WAY AT ANY TIME FOR THE PURPOSE OF CARRYING OUT THE OBJECTIVES FOR WHICH SUCH EASEMENTS OR RIGHTS-OF-WAY WERE RESERVED. NO STRUCTURES OR PLANTINGS ARE PERMITTED WITHIN ANY UTILITY EASEMENT.

EXCEPT AS SHOWN TO BE MORE RESTRICTIVE, BUILDING SETBACK DISTANCES SHALL CONFORM TO WASHINGTON TOWNSHIP ZONING REGULATIONS.

THIS PLAT CONSISTS OF FOUR (4) PAGES, AND ALL PAGES MUST BE USED FOR A COMPLETE REPRESENTATION OF THIS SUBDIVISION.

THE AREA SHOWN HEREON IS IN FLOOD ZONE "C", AREA OF MINIMAL FLOODING, AND FLOOD ZONE "A", AREA OF 100-YEAR FLOOD, PER FLOOD INSURANCE RATE MAP PANEL NUMBER 390772 0100 C, DATED MAY 15, 1985. BASE FLOOD ELEVATION IS 989.00 PER THE OHIO DEPARTMENT OF TRANSPORTATION STUDY OF OHIO ROUTE 708 AT THE GREAT MIAMI RIVER, THE 989.00 CONTOUR SHOWN HEREON WAS DETERMINED BY A TOPOGRAPHIC SURVEY BY LEE SURVEYING AND MAPPING CO., INC. AND M.A.N. MAPPING, INC. ON MARCH 1, 1996.

SURVEYOR'S CERTIFICATION

THE ACCOMPANYING PLAT REPRESENTS A SUBDIVISION OF LAND IN SECTIONS 2 AND 11, TOWN 7, RANGE 8, WASHINGTON TOWNSHIP, LOGAN COUNTY, OHIO.

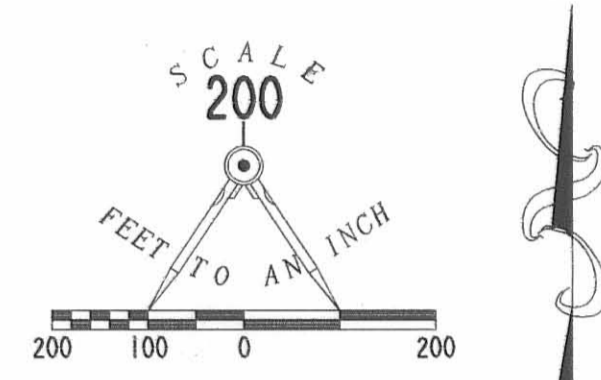
THE TRACT HAS A TOTAL AREA OF 84.593 ACRES, OF WHICH 12.123 ACRES ARE WITHIN THE STREET, LEAVING 72.470 ACRES IN BUILDING LOTS.

ALL MEASUREMENTS ARE IN FEET AND DECIMAL PARTS THEREOF.

I HEREBY STATE THAT THE ACCOMPANYING PLAT IS A CORRECT REPRESENTATION OF INDIAN LAKE INDUSTRIAL PARK AS SURVEYED IN MAY OF 2000, AND THAT ALL MONUMENTS ARE AS SHOWN HEREON HAVE BEEN SET.



JEFFREY I. LEE
8559
REGISTERED PROFESSIONAL SURVEYOR
STATE OF OHIO



DEDICATION

KNOW ALL MEN BY THESE PRESENTS THAT C.E. DUFF & SON, INC. AND WORLD CLASS PLASTICS, INC. OWNERS OF THE LAND INDICATED ON THE ACCOMPANYING PLAT, HAVE AUTHORIZED THE PLATTING THEREON AND DO HEREBY DEDICATE THE STREETS TO THE PUBLIC USE FOREVER.

WITNESSES AS TO NO. 1
SIGNATURE: *Ryan D. Beelman*
PRINTED NAME: Ryan D. Beelman
OWNER: James David Duff
SIGNATURE: *James David Duff*
PRINTED NAME: James David Duff
VICE PRESIDENT, C.E. DUFF & SON, INC.

STATE OF OHIO COUNTY OF LOGAN SS:
BEFORE ME A NOTARY PUBLIC IN AND FOR THE SAID COUNTY PERSONALLY CAME JAMES DAVID DUFF, VICE PRESIDENT, C.E. DUFF & SON, INC. WHO ACKNOWLEDGE THE SIGNING OF THE FOREGOING INSTRUMENT TO BE HIS VOLUNTARY ACT AND DEED FOR THE USES AND PURPOSES THEREIN EXPRESSED.

IN WITNESS WHEREOF, I HAVE HEREUNTO SET MY HAND AND AFFIXED MY OFFICIAL SEAL THIS 13th DAY OF July, 2000
Notary Public: *Victoria L. Sinker*

WITNESSES AS TO NO. 2
SIGNATURE: *Ronald L. Buckenroth*
PRINTED NAME: Ronald L. Buckenroth
OWNER: STEVEN LEE BUCKENROTH, PRESIDENT, WORLD CLASS PLASTICS, INC.

STATE OF OHIO COUNTY OF LOGAN SS:
BEFORE ME A NOTARY PUBLIC IN AND FOR THE SAID COUNTY PERSONALLY CAME STEVEN LEE BUCKENROTH, PRESIDENT, WORLD CLASS PLASTICS, INC. WHO ACKNOWLEDGE THE SIGNING OF THE FOREGOING INSTRUMENT TO BE HIS VOLUNTARY ACT AND DEED FOR THE USES AND PURPOSES THEREIN EXPRESSED.

IN WITNESS WHEREOF, I HAVE HEREUNTO SET MY HAND AND AFFIXED MY OFFICIAL SEAL THIS 17th DAY OF July, 2000
Notary Public: *Lori Widmark*

APPROVALS

PLAT PRE-APPROVED: *Janette M. Harty* 7-12-00
PLAT CHECKED: *Janette M. Harty* 7-17-00
REVIEWED THIS 13th DAY OF July, 2000. *Mary Louise Bresler* CHAIRMAN WASHINGTON TOWNSHIP TRUSTEES
APPROVED THIS 13th DAY OF July, 2000. *Janette M. Harty* LOGAN COUNTY ENGINEER
APPROVED THIS 13th DAY OF July, 2000. *Hans E. Pugh* INDIAN LAKE WATER POLLUTION CONTROL DISTRICT

THE WITHIN STREETS ARE HEREBY APPROVED AND ACCEPTED FOR PUBLIC MAINTENANCE BY RESOLUTION NO. 301-09 RECORDED IN LOGAN COUNTY COMMISSIONERS' JOURNAL ON THIS 13th DAY OF July, 2000.

APPROVED THIS 13th DAY OF July, 2000. *Gregg A. Harris* LOGAN UNION CHAMPAIGN REGIONAL PLANNING COMMISSION
APPROVED THIS 13th DAY OF July, 2000. *George W. Clayton*
APPROVED THIS 17th DAY OF July, 2000. *Danell J. Smith* LOGAN COUNTY COMMISSIONERS
TRANSFERRED THIS 17th DAY OF July, 2000. *Michael E. Godwin* AUDITOR, LOGAN COUNTY, OHIO
FILED FOR RECORD THIS 17th DAY OF July, 2000. AT A.M. 11:58
RECORDED THIS 17th DAY OF July, 2000. IN PLAT CABINET B, SLIDE 51A-52B
RECORDED, LOGAN COUNTY, OHIO: *Carolyn Collins*

DEVELOPER
C.E. DUFF & SON, INC.
9042 ST. RT. 117
HUNTSVILLE, OHIO 43324
(937) 686-2488

DEVELOPER
LEE SURVEYING & MAPPING CO., INC.
117 North Madison Street
Bellefontaine, Ohio 43311
(937) 593-7335
D 323 DFRD.LBD.DAT
L11PLAT.GCD
L-2361-I

COPYRIGHT 2000 BY:
LEE SURVEYING & MAPPING CO., INC.
117 North Madison Street
Bellefontaine, Ohio 43311
(937) 593-7335
D 323 DFRD.LBD.DAT
L11PLAT.GCD
L-2361-I