

ANNEXATION DESCRIPTION
70.013 Acres

The following described tract of land is situated in the State of Ohio, Logan County, Lake Township, VMS 5045, VMS 9572 being part of LeVan Investments LLC's 58.727 acre Tract I and all of a 12.000 acre Tract II described in Official Record 1408, page 2539 and being more particularly described as follows:

Commencing at a concrete resurvey monument found marking the intersection of the centerline of Lake Avenue with the centerline of Ludlow Road (C.R.1) (60');
Thence South 14°15'33" East 1186.05 feet, following the centerline of Ludlow Road and the west line of VMS 9572, to a 1" iron pipe found marking the northwest corner of said 58.727 acre Tract I and the southwest corner of The Board of Education of the Bellefontaine City School District's 64.782 acre Tract III (O.R. 966, page 572), in the Bellefontaine Corporation line and marking the point of beginning;

Thence South 86°22'46" East 1005.96 feet, following the north line of said 58.727 acre Tract I, the south line of said 64.782 acre tract and said corporation line, passing at 31.52 feet an iron pin set, to a 5/8" iron pin found marking the southwest corner of said 12.000 acre Tract II;

Thence North 03°31'45" East 660.49 feet, following the west line of said 12.000 acre Tract II and the east line of said 64.782 acre tract and said corporation line, to a stone found;

Thence South 86°22'28" East 794.57 feet, following the north line of said 12.000 acre Tract II and the south line of said 64.782 acre tract and said corporation line, to a stone found in the west line of Timothy M. Sr. and Mary A. Smith's 17.205 acre Tract (O.R. 435, page 667) and the east line of VMS 9572;

Thence South 03°43'44" West 662.80 feet, following the east line of VMS 9572, the east line of said 12.000 acre Tract II, the west line of said 17.205 acre tract and the west line of said Clinton M. Barger Trustee's 49.563 acre Tract III (O.R. 1153, page 945), to a 5/8" iron pin found marking the northeast corner of said 58.727 acre Tract I;

Thence South 03°39'37" West 1739.59 feet, following the east line of VMS 9572, VMS 5045, the east line of said 58.727 acre Tract I and the west line of said 49.563 acre Tract III, to a iron pin set on the north right of way line of Township Road 181 (40');

Thence North 84°56'43" West 1022.94 feet, following the north right of way line of Township Road 181 and entering said 58.727 acre Tract I, to a point;

Thence North 54°38'32" West 324.18 feet, following the south line of said 58.727 acre Tract I, continuing with the north right of way line of Township Road 181 (33'), to a railroad spike found in the centerline of Ludlow Road and the west line of VMS 5045;

Thence North 14°15'33" West 769.80 feet, following the centerline of Ludlow Road, the west line of VMS 5045 and the west line of said 58.727 acre Tract I, to a railroad spike found marking the southwest corner of Katy Lyn Wright's 0.53 acre Tract I (O.R. 1408, page 5234);

Thence South 84°45'49" East 245.62 feet, following the south line of said 0.53 acre tract and the south line of Katy Lyn Wright's 0.157 acre Tract II (O.R. 1408, page 5234), passing at 31.86 feet a 5/8" iron pin found, to a 1/2" iron pin found;

Thence North 14°16'01" West 340.05 feet, following the east line of said 0.157 acre tract and the east line of Tamara A. Allison Trustee's 1.116 acre tract (O.R. 1153, page 951), to a 1/2" iron pin found;

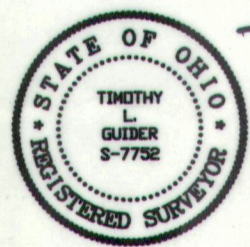
Thence North 84°45'16" West 245.58 feet, following the north line of said 1.116 acre tract, passing at 213.72 feet a 1/2" iron pin found, to a railroad spike found in the centerline of Ludlow Road, the west line of VMS 5045 and the west line of said 58.727 acre Tract I;

Thence North 14°15'33" West 514.41 feet, following the centerline of Ludlow Road, the west line of VMS 5045, VMS 9572, and the west line of said 58.727 acre Tract I, to the point of beginning, containing 70.013 acres, containing 18.706 acres in VMS 9572 and 51.307 acres in VMS 5045, with 0.893 acres within the road right of way. Subject to all valid easements and restrictions of record.

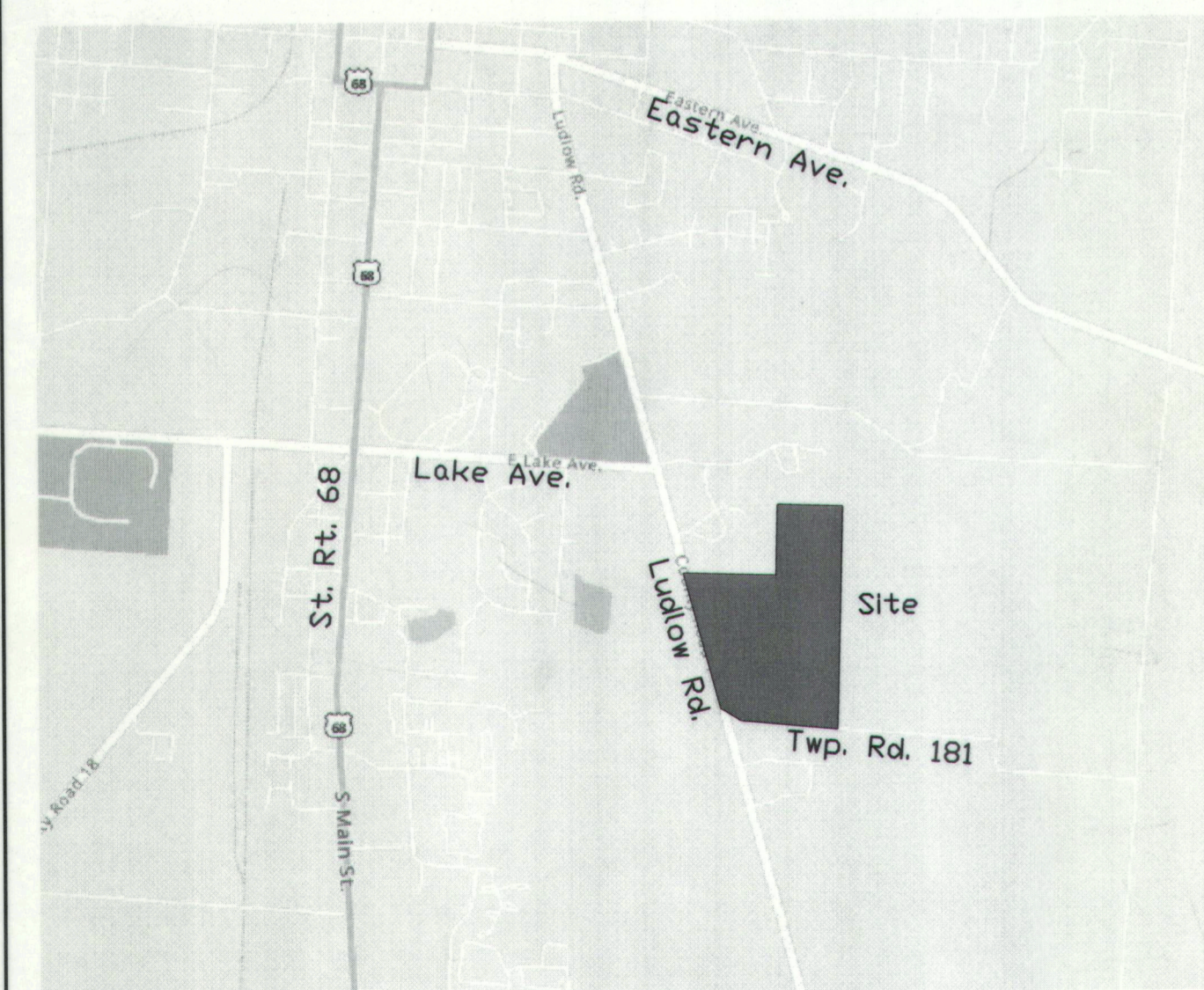
I, Timothy L. Guider, hereby certify that this Annexation description was prepared from an actual field survey made by me during the month of August 2022 and that monuments were set or found as indicated herein. Iron pin sets are 5/8" x 30" reinforcing rods with caps marked "GUIDER S 7752". Basis of Bearing: State Plane Coordinate System, Ohio North Zone, NAD83.

Timothy L. Guider R.S. #7752 Date: 12/2/22
Guider Winkle Partners, Inc. Job# 22199-70.013
19541 Delaware County Line Rd.
Marysville, Ohio 43040
(740)666-8902

Surveyor's Certification
I hereby certify that this description and plat is an accurate representation for annexation purposes from a field survey made by me and is correct to the best of my knowledge.

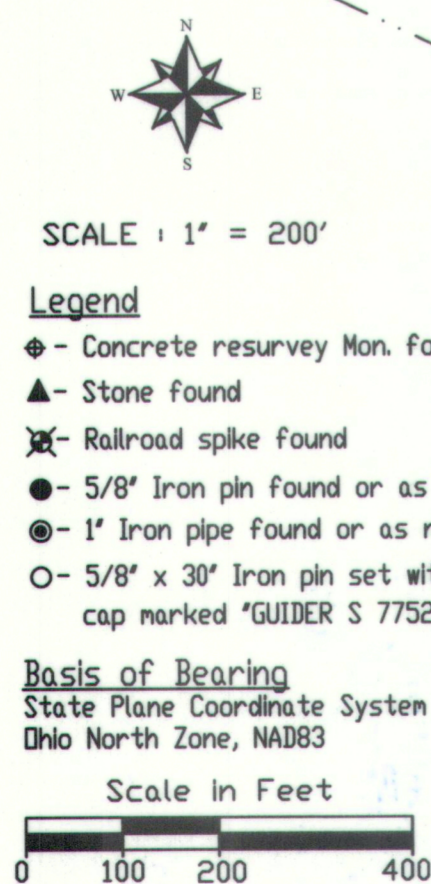


Timothy L. Guider 6-20-23
Timothy L. Guider R.S. #7752
Guider Winkle Partners, Inc.
19541 Delaware County Line Road
Marysville, Ohio 43040
(740)666-8902
Job#22199

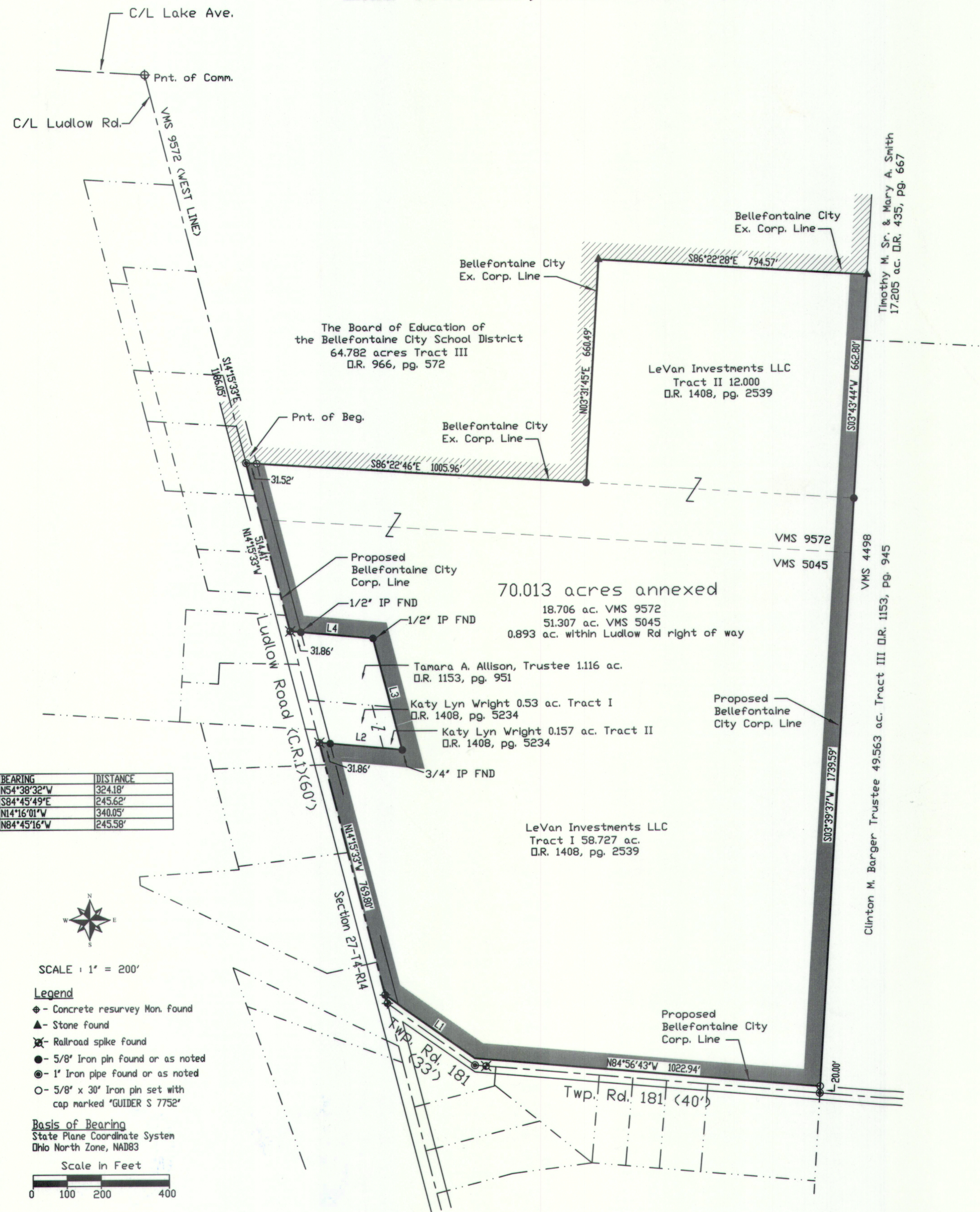


VICINITY MAP
(NO SCALE)

LINE	BEARING	DISTANCE
L1	N54°38'32"W	324.18'
L2	S84°45'49"E	245.62'
L3	N14°16'01"W	340.05'
L4	N84°45'16"W	245.58'



**PROPOSED ANNEXATION TO THE
CITY OF BELLEFONTAINE**
70.013 ACRES
VMS 5045 & VMS 9572
LAKE TOWNSHIP, LOGAN COUNTY, OHIO



APPROVAL BY LOGAN COUNTY COMMISSIONERS

THE ANNEXATION OF THIS AREA WAS APPROVED THIS 15th DAY OF December, 2022, BY RESOLUTION No. 289-22.

[Signature]
LOGAN COUNTY COMMISSIONER
[Signature]
LOGAN COUNTY COMMISSIONER
[Signature]
LOGAN COUNTY COMMISSIONER

APPROVAL BY LOGAN COUNTY ENGINEER

THIS PLAT WAS REVIEWED AND APPROVED THIS 31st DAY OF January, 2024.

[Signature]
LOGAN COUNTY ENGINEER

APPROVAL BY LOGAN COUNTY MAPROOM

PLAT PRE-APPROVED
[Signature] 6-24-2023
LOGAN COUNTY MAPROOM DATE
PLAT CHECKED
[Signature] 2-1-2024
LOGAN COUNTY MAPROOM DATE

APPROVAL BY LAKE TOWNSHIP

THIS PLAT WAS REVIEWED AND APPROVED THIS 11 DAY OF July, 2023.
[Signature]
LAKE TOWNSHIP TRUSTEES CHAIRMAN

APPROVAL BY THE CITY OF BELLEFONTAINE

AT A MEETING OF THE CITY COUNCIL OF THE CITY OF BELLEFONTAINE HELD THIS 28th DAY OF March, 2023 THE ANNEXATION OF THE TERRITORY SHOWN HEREON TO THE CITY OF BELLEFONTAINE WAS APPROVED AND ACCEPTED BY ORDINANCE No. 23-16.

[Signature]
MAYOR
[Signature]
COUNCIL PRESIDENT
[Signature]
CLERK

LOGAN COUNTY AUDITOR

APPROVED AND TRANSFERRED 2-5, 2024.

[Signature]
LOGAN COUNTY AUDITOR

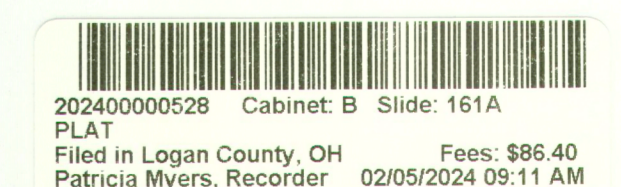
LOGAN COUNTY RECORDER

RECEIVED FOR RECORD AT 9:11 O'CLOCK, A.M.

THIS 5th DAY OF January, 2024.

RECORDED IN PLAT CABINET B, SLIDE 161A.

[Signature]
LOGAN COUNTY RECORDER



PREPARED BY: **Guider Winkle Partners, Inc.**

19541 Delaware County Line Rd Marysville, Ohio 43040
PH. (740) 666-8902
DRAWN BY: A.C.
FILE/CABINET: LUDLOW ZONING MAP

PROFESSIONAL STAMP:

REVISIONS:

DESCRIPTION:

DATE:

NO.:

SHEET NAME: **ANNEXATION MAP**
CITY OF BELLEFONTAINE, VMS 5045, 9572, LAKE TOWNSHIP

PREPARED FOR: **LEVAN INVESTMENTS LLC**
4198 US 68, WEST LIBERTY, OHIO 43057

SCALE:

DATE: 12/02/22

SHEET:

1.0

JOB # 22-199