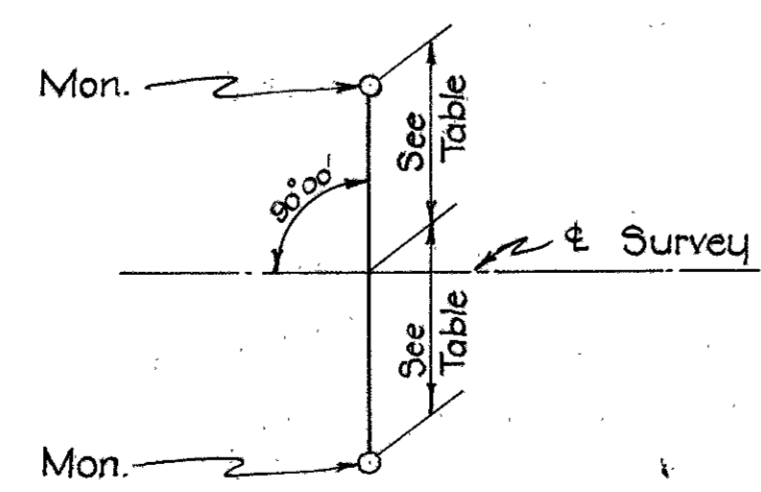
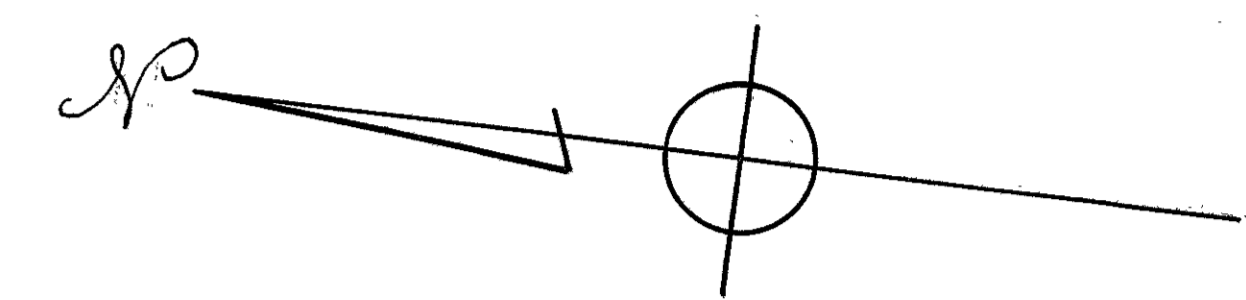
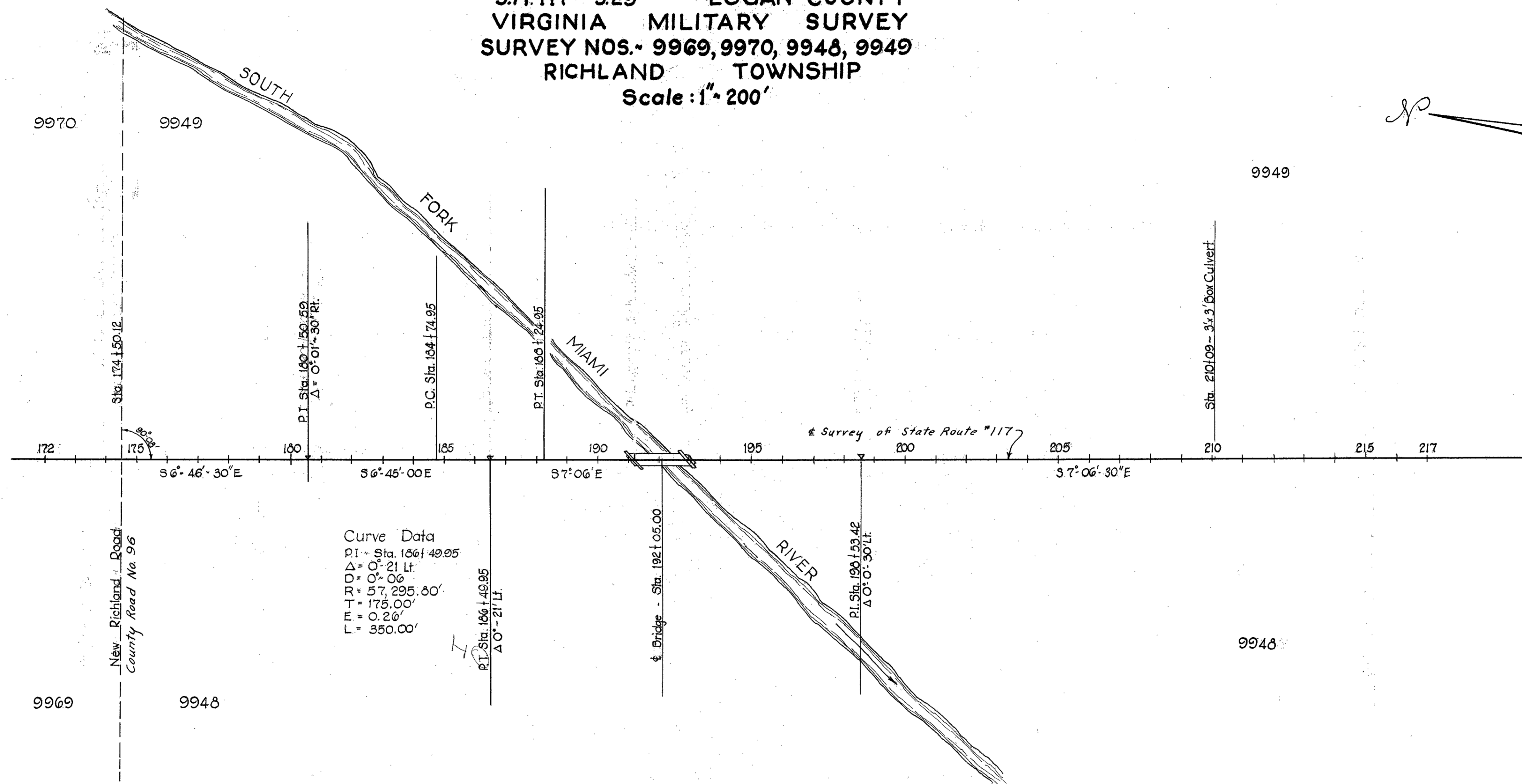


FED. RD. DIVISION	STATE	PROJECT	TYPE FUNDS
2	OHIO		

LOGAN COUNTY  
LOG. 117~ 3.29

# LOCATION PLAN

S.R. 117~ 3.29 LOGAN COUNTY  
VIRGINIA MILITARY SURVEY  
SURVEY NOS. 9969, 9970, 9948, 9949  
RICHLAND TOWNSHIP  
Scale: 1" = 200'



DETAIL FOR SETTING REFERENCE POINTS

### REFERENCE POINTS TO BE SET AFTER CONSTRUCTION

STATION	Distance from $\pm$	
	Lt.	Rt.
174+00.00	18'	18'
180+00.00	18'	18'
P.I. 186+49.95	18'	18'
190+50	18'	18'
195+00.00	18'	18'
P.I. 195+53.42	18'	18'
205+00.00	18'	18'
210+00.00	18'	18'
215+00.00	18'	18'

Completed March 4 1955 By: Joseph K. Allen, E.H.I.F.

APPROVED: 7-2-52  
*D.W. Furbelmeier* LOCATION & DESIGN ENGINEER  
 REG. PROFESSIONAL ENGINEER NO. 1336

V.M.S. 9970

William A. Shaw

V.M.S. 9949  
Richland Twp.

FED. RD. DIVISION	STATE	PROJECT	TYPE FUNDS
2	OHIO		

1
2

**LOGAN COUNTY**  
**LOG. 117-3.29**  
**R/W PLAN**

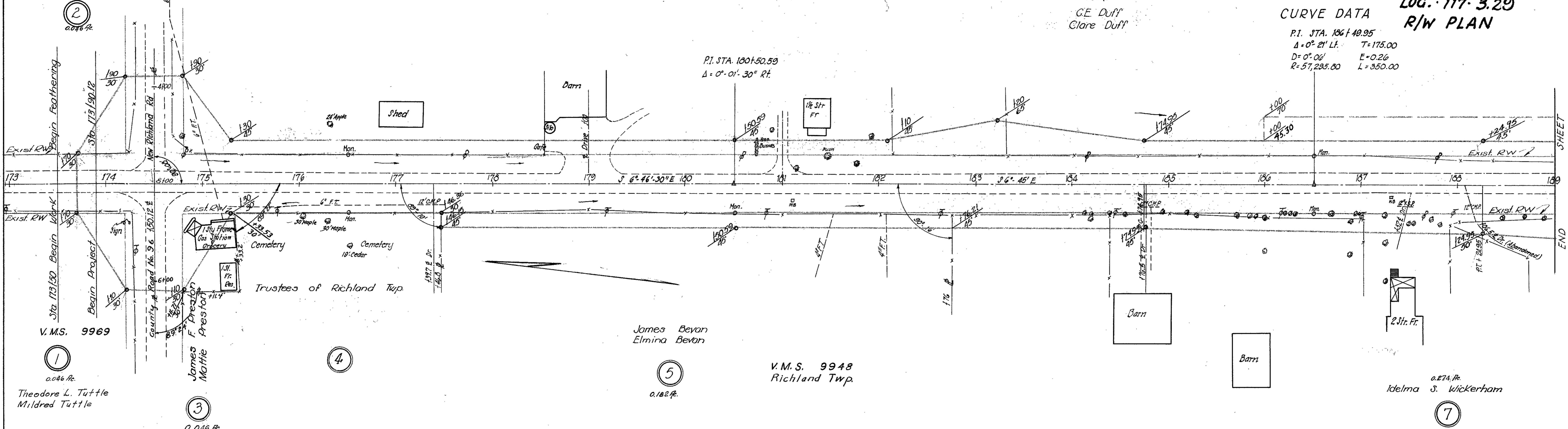
**CURVE DATA**

P.I. STA. 186+49.95  
 $\Delta = 0^\circ 21' 15''$  T=175.00  
 $D = 0^\circ 06'$  E=0.26  
R=57,295.80 L=350.00

6

1.60 R.  
C.E. Duff  
Clare Duff

P.I. STA. 180+50.59  
 $\Delta = 0^\circ 01' 30''$  Rt.



V.M.S. 9969

Theodore L. Tuttle  
Mildred Tuttle

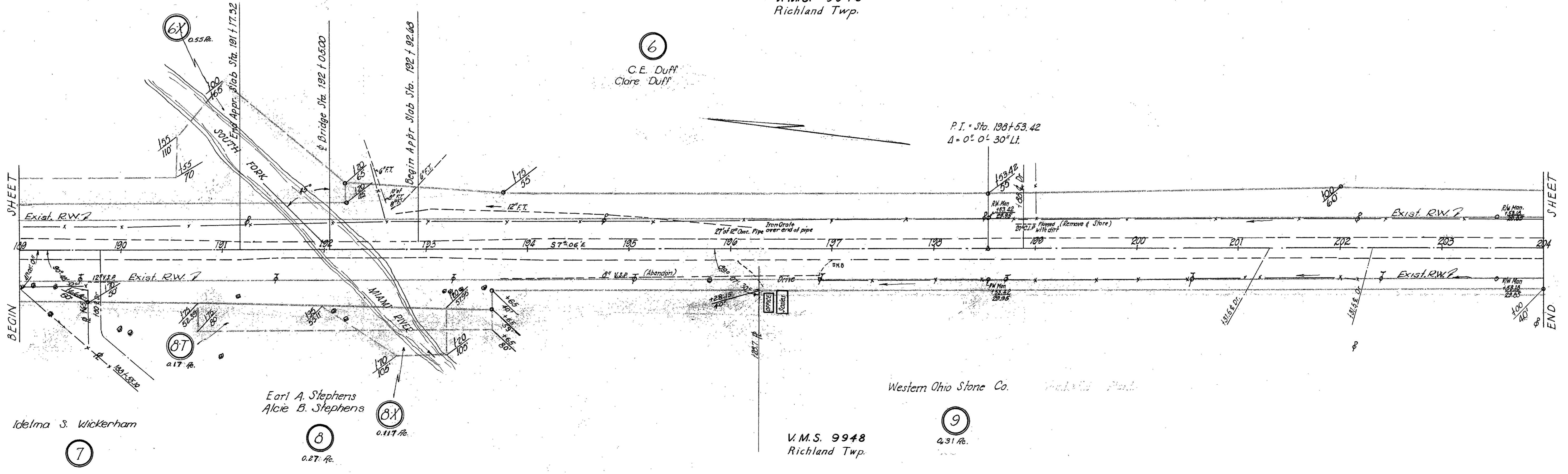
V.M.S. 9948  
Richland Twp.

Idelma S. Wickerham

V.M.S. 9949  
Richland Twp.

6  
C.E. Duff  
Clare Duff

P.I. = Sta. 198+53.42  
 $\Delta = 0^\circ 0' 30''$  Lt.



Idelma S. Wickerham

Earl A. Stephens  
Alcie B. Stephens

Western Ohio Stone Co.

V.M.S. 9948  
Richland Twp.

FED. RD. DIVISION	STATE	PROJECT	TYPE FUNDS
2	OHIO		

2  
2

**LOGAN COUNTY**  
**LOG-117-3.29**  
**R/W PLAN**

V.M.S. 9949  
 Richland Twp.

10  
 0.32 A.R.

Errett Baier  
 Helen M. Baier

6

C.E. Duff  
 Clore Duff

WESTERN OHIO STONE CO.

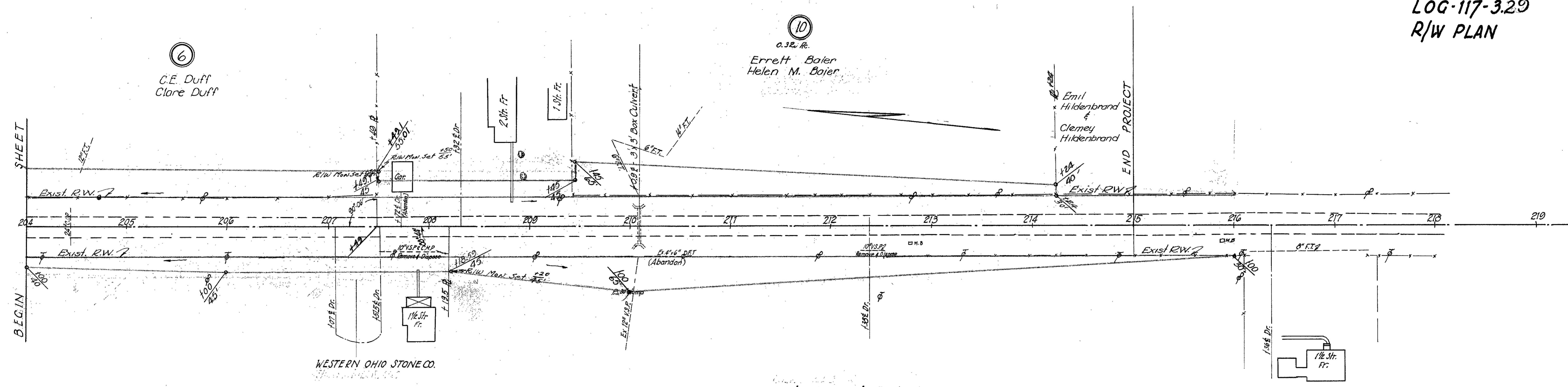
9

Hugh Leonard Roebuck  
 Carrie Ethel Roebuck

11  
 0.375 A.R.

V.M.S. 9948  
 Richland Twp.

R/W Monuments Set Mar. 4, 1955



SHEET  
 BEGIN

END PROJECT