

SECTION

● INDICATES R/W Monuments

Lester Archer (4)

S.B. Shape (3)  
1.07 A

Milton Yoder (2)  
.317

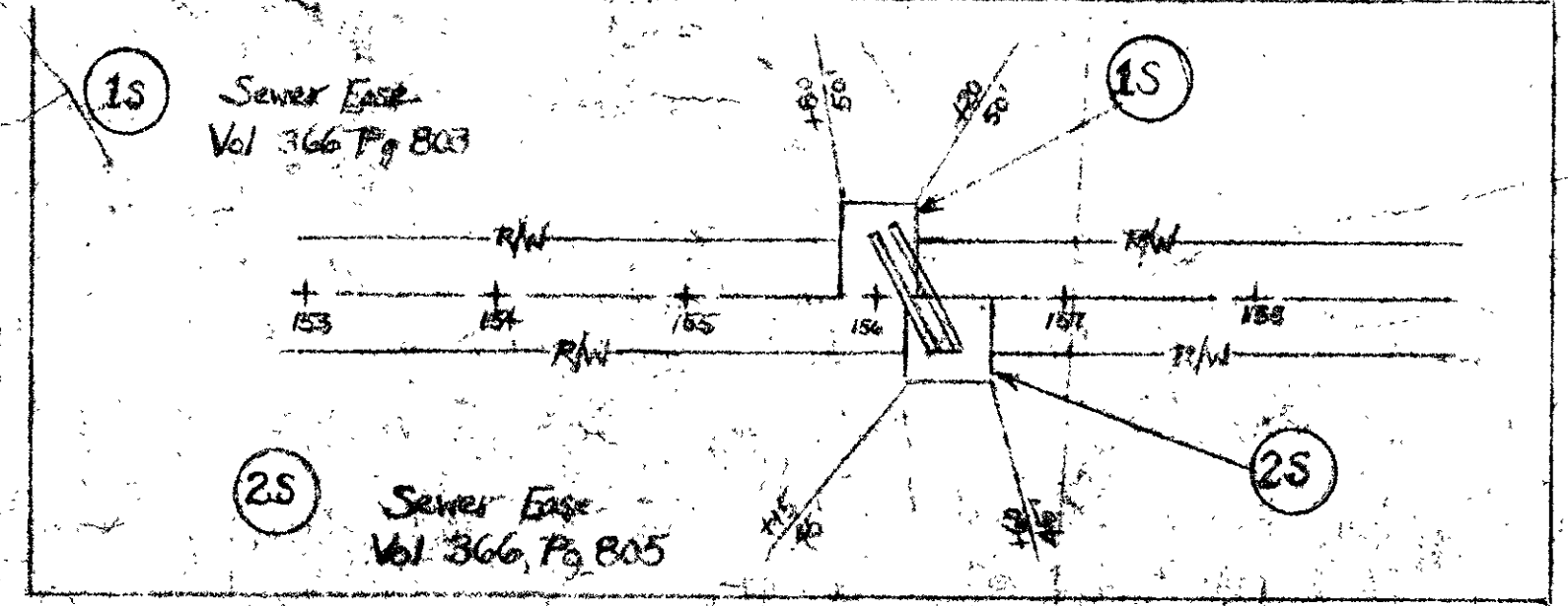
John Elder (1)  
25 A

Field notes Logan County  
Surveyor's Book 517

Note - tile to be placed in front of orchard  
if for any reason is to be allowed proper compensation  
the landowner is to be set 2' feet in front of trees  
also fence to be set 2' feet in front of trees

Old R/W Line  
Old R/W Line

Station Equation Sta. 0+00 OLD = 150 + 52.57 NEW



STONE

S.B. Shape .09 A

24°-13'  
D. 8'-0"  
R. 716.78  
E. 16.40  
L. 302.71  
T. 153.77  
P.I. 20+23.88

PT. 21+72.22

Sta. 26+65.88 Stone on E

N. 82°-43' E.

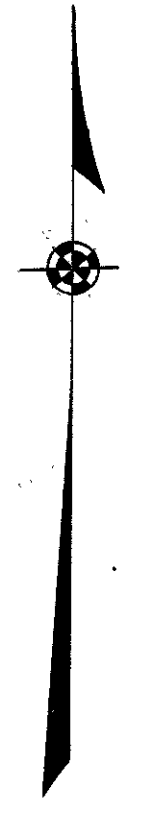
Private Lane

111' 11" 27' 8" 8' 0" 11' 11" 27' 8" 8' 0"

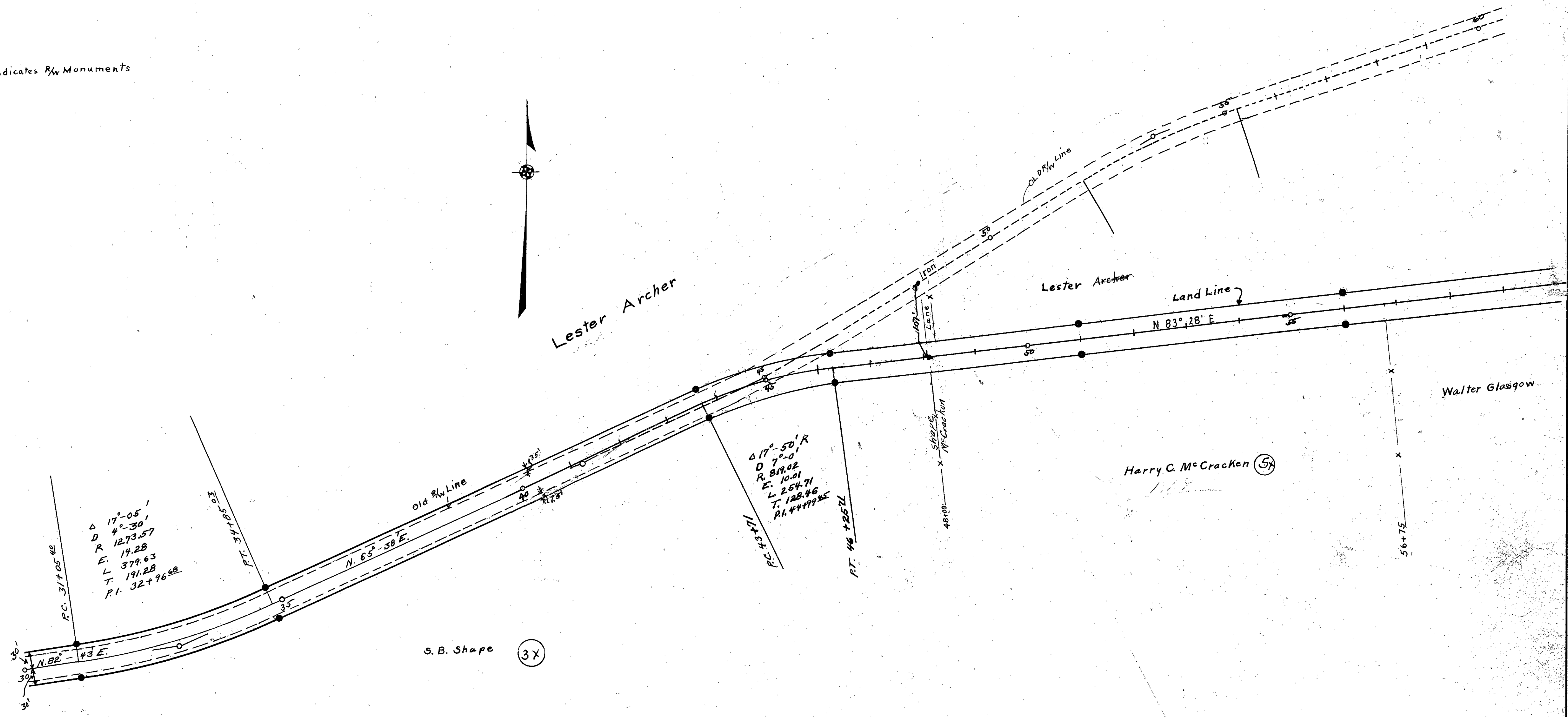
24°-30'  
D. 8'-0"  
R. 716.78  
E. 16.70  
L. 306.25  
T. 155.63  
P.I. 8+54.63

P.I. Hvb. 5.85 E.  
48.9°  
10' Elm  
12' Ash

● Indicates R/W Monuments

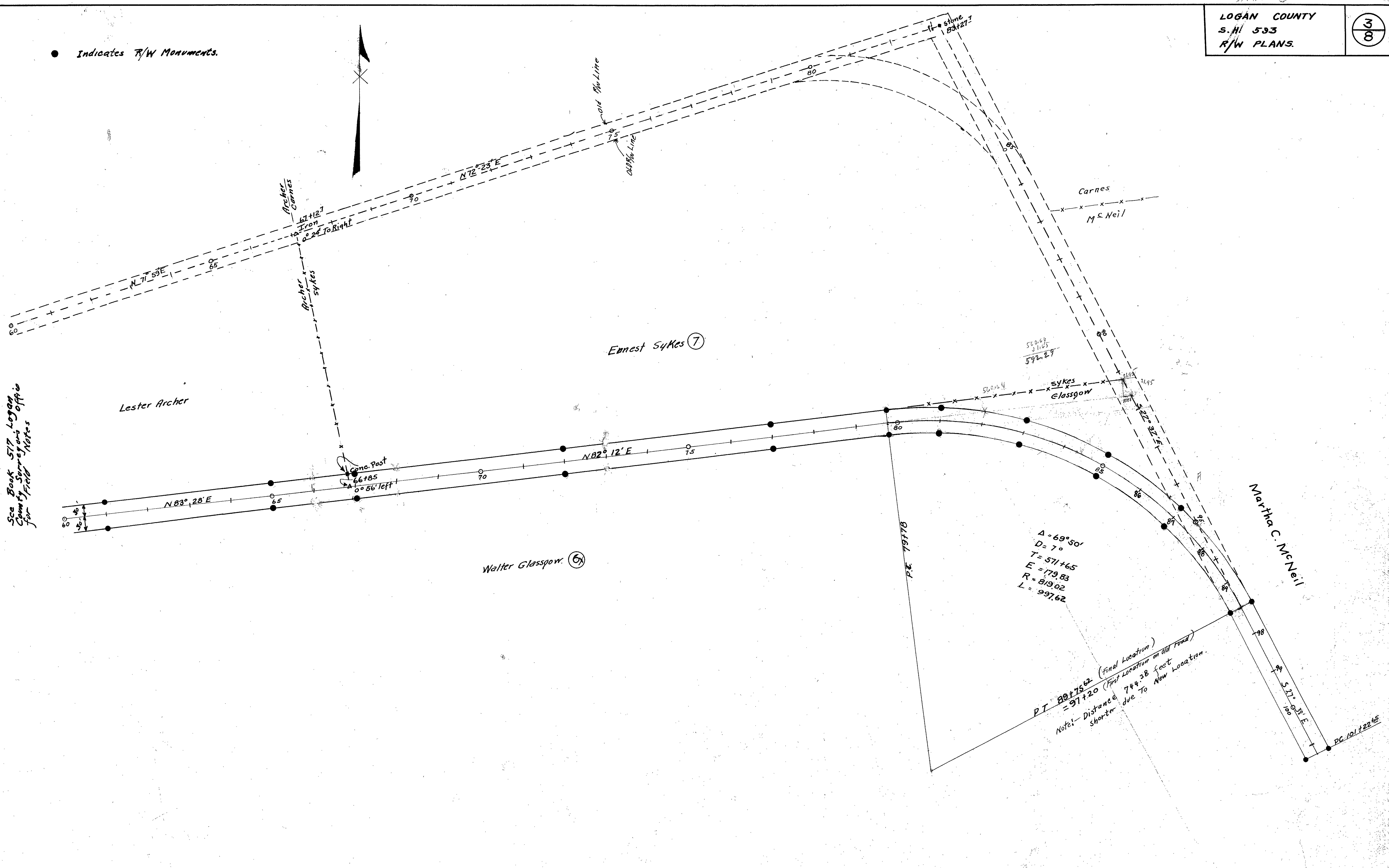


Field Notes in Logan  
County Surveyors  
Book 577





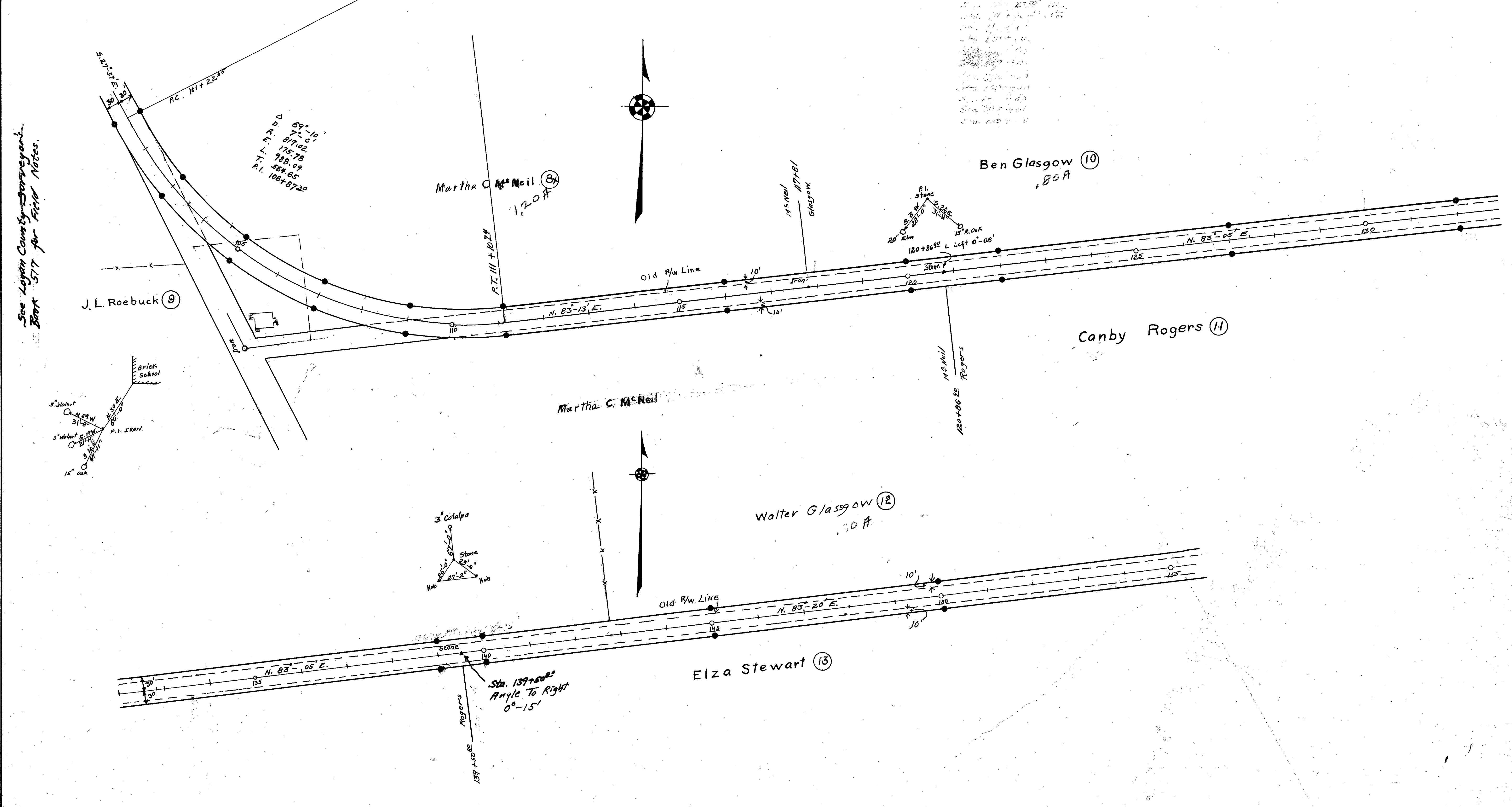
● Indicates R/W Monuments.



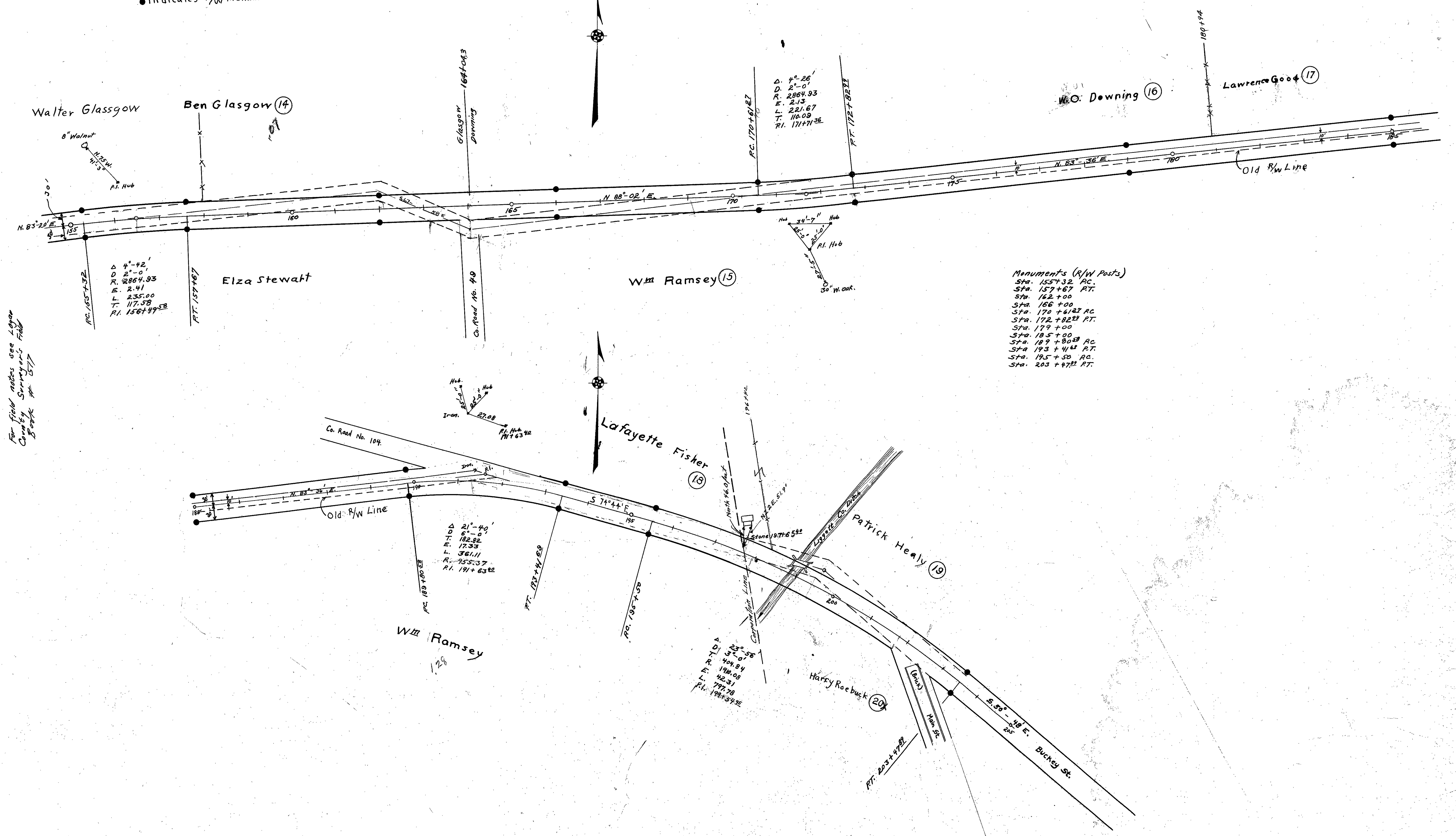
See Book 517 Logan County Surveys Office for Field Notes

● Indicates R/W Monuments

See Logan County Surveyors  
Book 577 for Field Notes.



● Indicates R/W Monuments



$\Delta$  4'-42'  
 $D$  2'-0'  
 $R$  2864.93  
 $E$  2.41  
 $L$  235.00  
 $T$  117.58  
 $P.I.$  156+49.58  
 $P.C.$  155+32  
 $P.T.$  157+67

$\Delta$  4'-26'  
 $D$  2'-0'  
 $R$  2864.93  
 $E$  2.13  
 $L$  221.67  
 $T$  116.09  
 $P.I.$  171+71.36  
 $P.C.$  170+61.21  
 $P.T.$  172+82.91

Monuments (R/W Posts)

- Sta. 153+32 P.C.
- Sta. 157+67 P.T.
- Sta. 162+00
- Sta. 166+00
- Sta. 170+61.21 P.C.
- Sta. 172+82.91 P.T.
- Sta. 179+00
- Sta. 185+00
- Sta. 189+80.83 P.C.
- Sta. 193+41.82 P.T.
- Sta. 195+50 P.C.
- Sta. 203+47.82 P.T.

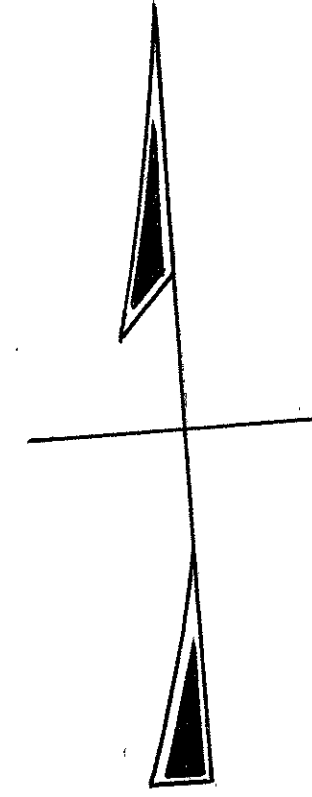
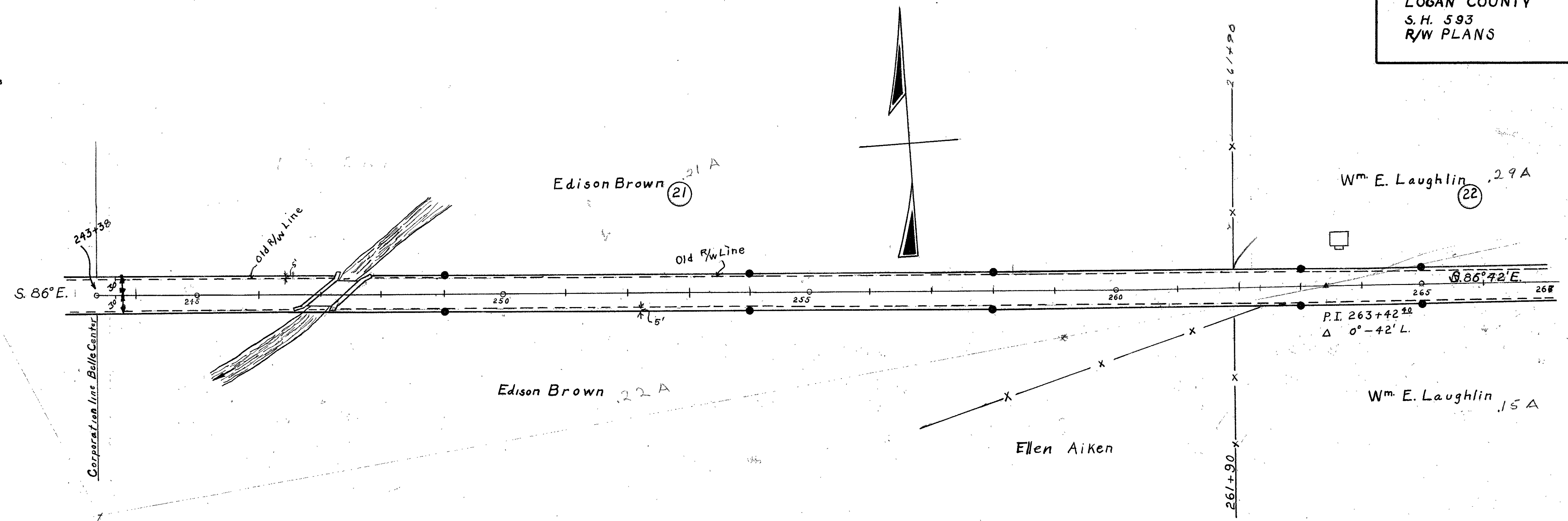
$\Delta$  21'-40'  
 $D$  6'-0'  
 $R$  182.82  
 $E$  17.33  
 $L$  361.11  
 $R$  955.37  
 $P.I.$  191+63.82  
 $P.C.$  189+80.83  
 $P.T.$  193+41.82

$\Delta$  23'-56'  
 $D$  3'-0'  
 $R$  404.84  
 $E$  196.08  
 $L$  42.31  
 $T$  797.78  
 $P.I.$  198+34.35  
 $P.C.$  197+78  
 $P.T.$  200+47.82

For field notes see Logan County Surveyor's Field Book # 577

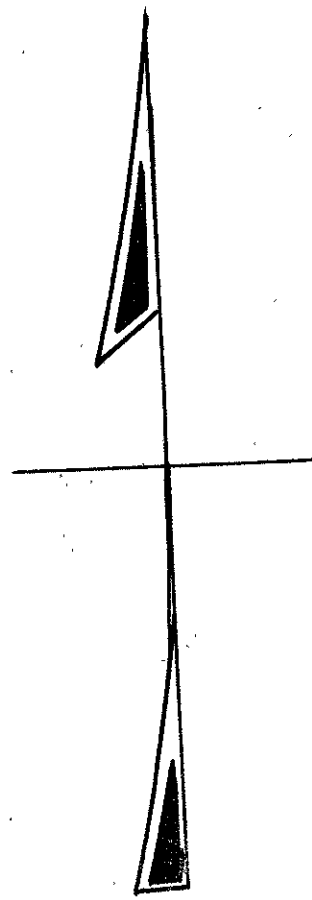
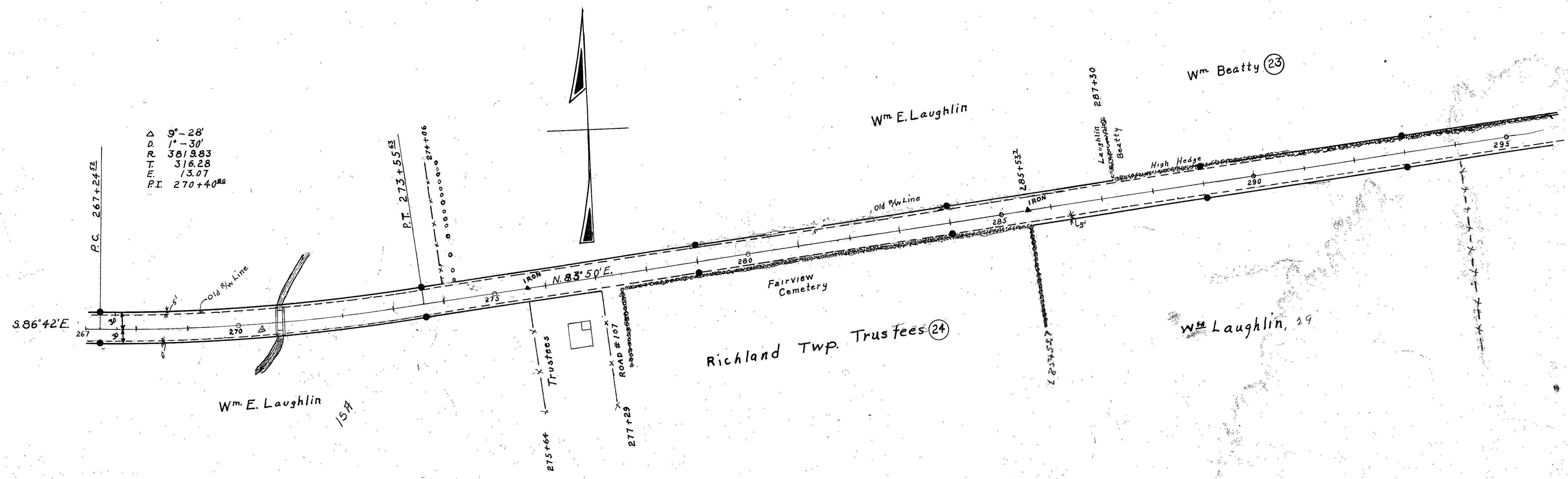
● Indicates R/W Monuments

Belle Center



For Field Notes see ~~Book 500~~  
Logan County Surveying Office

Δ 9°-28'  
D. 1°-30'  
R. 3819.83  
T. 316.28  
E. 13.07  
P.I. 270+40.80





● Indicates  $\frac{1}{4}$ " Monuments

2 Story  
Frame

Wm. Beatty

N. 83° 50' E.

N. 84° 18' E.

P.I. 299 + 45.1  
Δ 0° - 28' R.

OLD R/W LINE

old R/W line

Δ	22° - 36'
D	3' - 30'
R	1637.28
T	327.16
E	32.37
L	615.71
P.I.	310 + 64.42

36' Elm  
42' N 32° E  
Stone

Beatty  
Volbrecht

Mabel Volbrecht (26)  
31 A

Take care of tile  
ditch

Wm Laughlin

303 + 12

P.C. 307 + 37.44

P.T. 313 + 83.4

Preston Postle (20)  
31 A

RUSHCREEK TOWNSHIP  
VA. MIL. SURVEY No. 9974

Bernice B. Porter (28)

Mabel Volbrecht

Δ	23° - 26'
D	5' - 0'
R	1146.28
T	257.83
E	24.44
L	468.67
P.I.	334 + 93

P.C. 332 + 55.12

Ward Sweetland (20)

Bernice B. Porter

S. 83° 06' E.

Preston Postle

329 + 11

(27X)

534.7'

Grapes to be preserved  
by using tile.

Ward Sweetland

N. 83° 28' E.

N. 83° 28' E. 424.0'

S. 83° 28' W. 424.0'

Take care of side ditch  
with 12" V.S.P.

(27A)

S. 6° 32' E. 5.0'

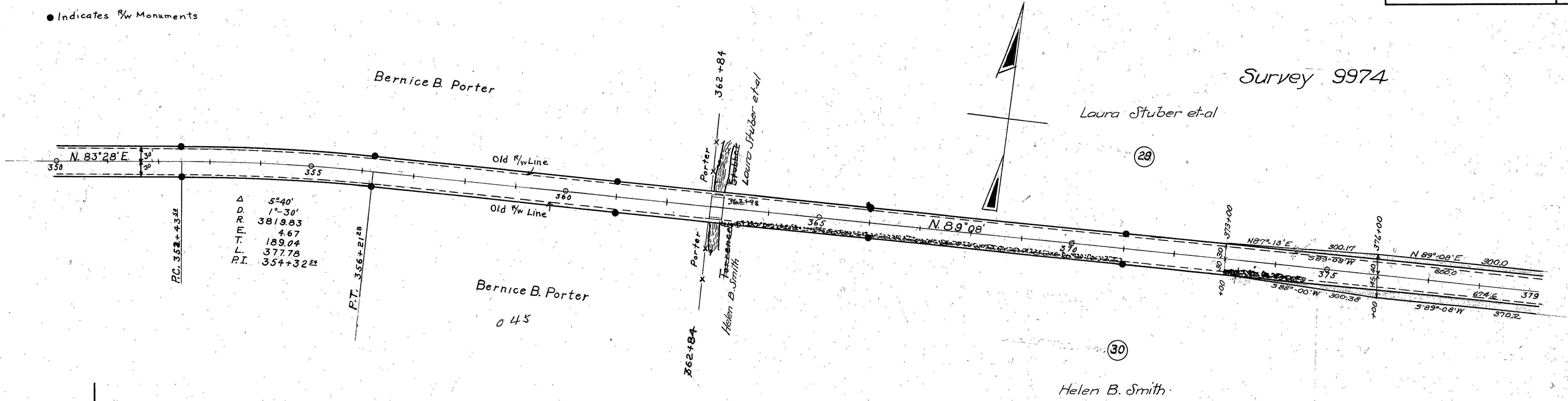
Field Notes Book 517

# RUSHCREEK TOWNSHIP

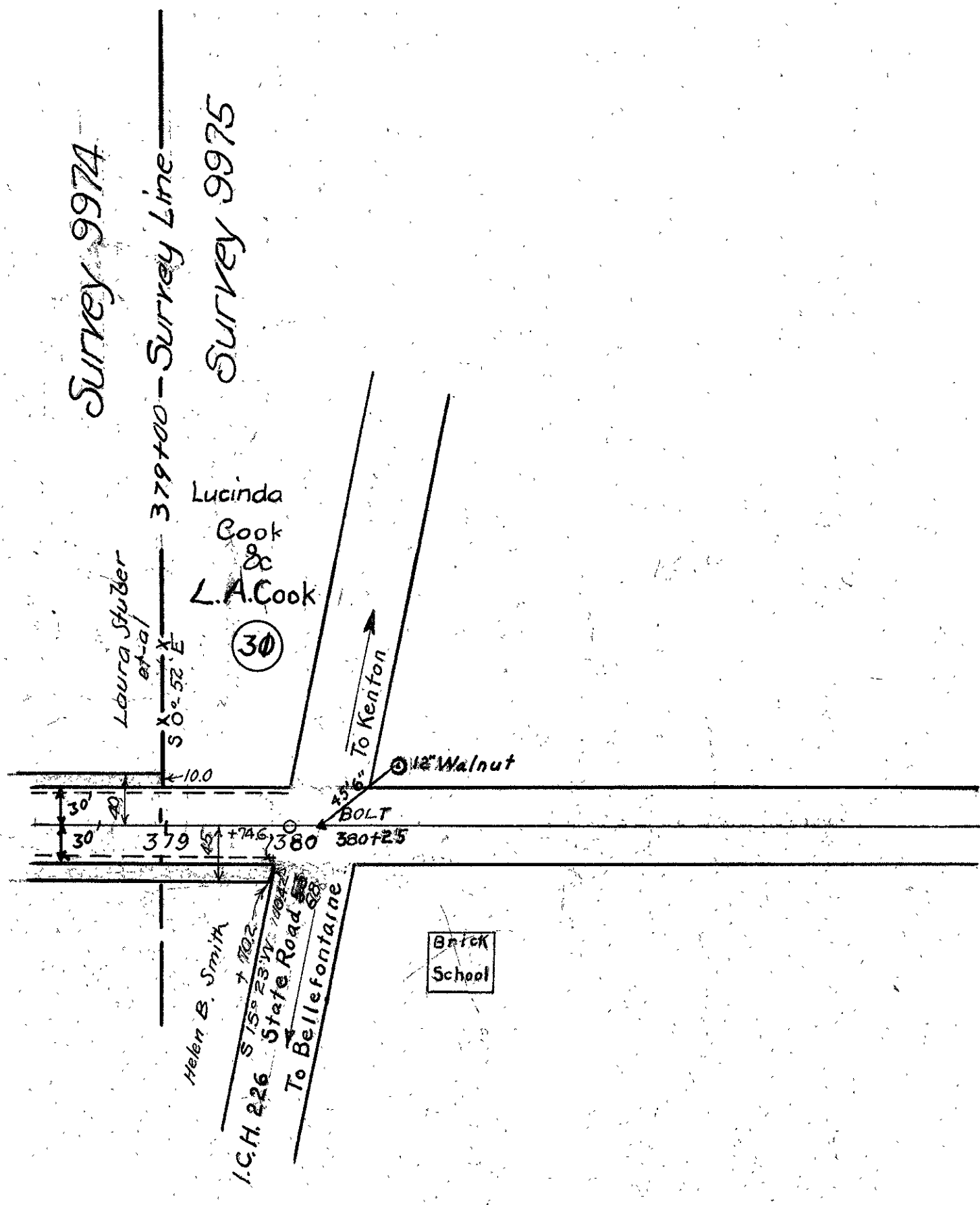
LOGAN COUNTY  
S.H. 593  
R/W PLANS

8  
8

● Indicates R/W Monuments



Field Notes Book 57





# RUSHCREEK TOWNSHIP SURVEY No. 9975

L.A. & LUCINDA E. COOK, COOK

**Curve Data**

PI. Sta 386+16.86  
 $\Delta = 6^{\circ} 09' 14''$   
 $D = 1^{\circ} 00'$   
 $R = 5729.58$   
 $T = 307.80$   
 $L = 615.00$   
 $E = 8.26$

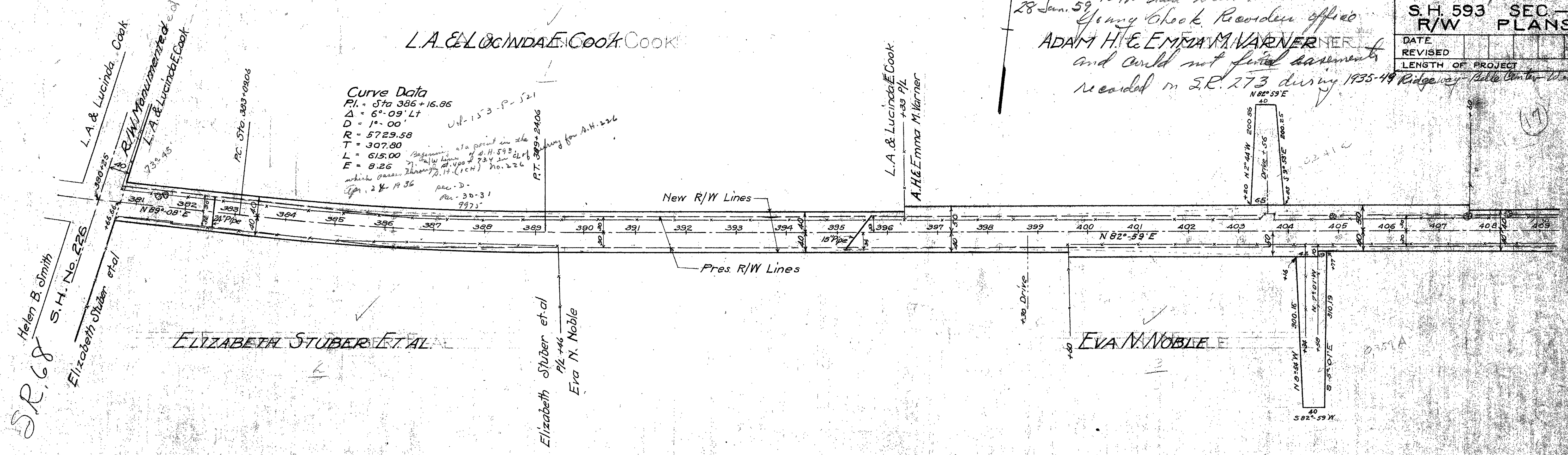
1/4-153-P-521  
 RT 389+2406  
 beginning at a point in the  
 R/W lines of S.H. 593  
 at Sta. 400+73.4 in 2d of  
 which passes through P.I. (I.C.H.) No. 226  
 Sta. 24+19.36  
 P.C. 30-31  
 9975

10 Feb. 1958  
 Checked old files - did not find  
 any evidence that the entire  
 R/W had been obtained.  
 28 Jan. 59  
 Jerry Cook, Recorder office  
 ADAM H. & EMMA M. VARNER  
 and could not find easements  
 recorded in S.R. 273 during 1935-49

FED. RD. DIST. NO.	STATE	PROJECT	FISCAL YEAR
	OHIO		1958

LOGAN COUNTY  
 S.H. 593 SEC. - D  
 R/W PLANS

DATE	REVISION	LENGTH OF PROJECT
		Ridge way - Belle Center West

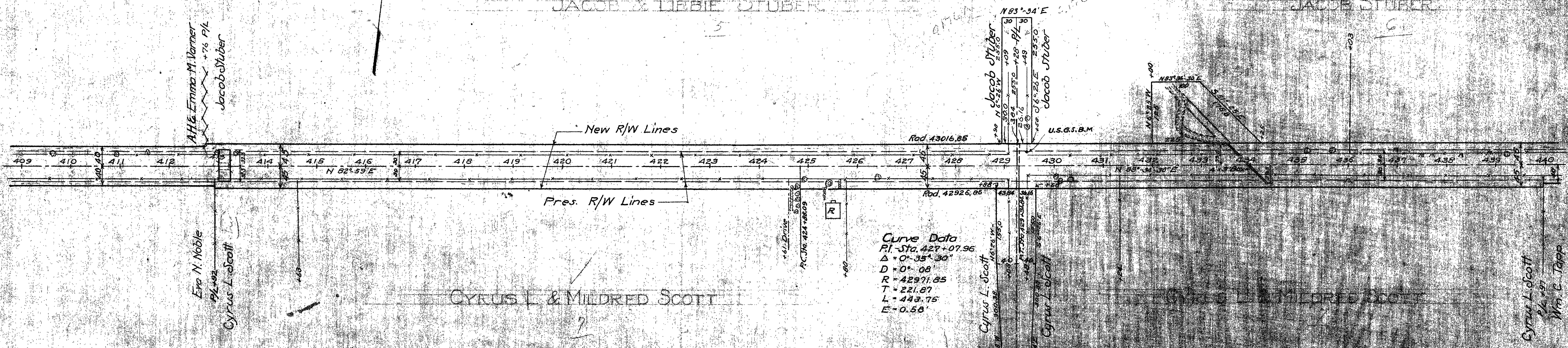


# SURVEY No. 9975

JACOB & LIBBIE STUBER, STUBER

**Curve Data**

PI. Sta. 427+07.96  
 $\Delta = 0^{\circ} 35' 30''$   
 $D = 0^{\circ} 08'$   
 $R = 42971.85$   
 $T = 221.87$   
 $L = 443.75$   
 $E = 0.58$



S.R. 68  
 Helen B. Smith  
 S.H. No. 226  
 Elizabeth Stuber et al

A.H. & Emma M. Varner  
 + 7/8 P/L  
 Jacob Stuber  
 Eva N. Noble  
 P/L 192  
 Cyrus L. Scott

Jacob Stuber  
 2350  
 N 83° 34' E  
 30  
 30  
 109  
 2550  
 429  
 414  
 149  
 2550  
 429  
 430  
 431  
 432  
 433  
 434  
 435  
 436  
 437  
 438  
 439  
 440  
 Jacob Stuber  
 Cyrus L. Scott  
 P/L 192  
 Cyrus L. & Mildred Scott  
 P/L 192  
 Mrs. C. Tapp



RUSHCREEK TOWNSHIP  
SURVEY No. 9976

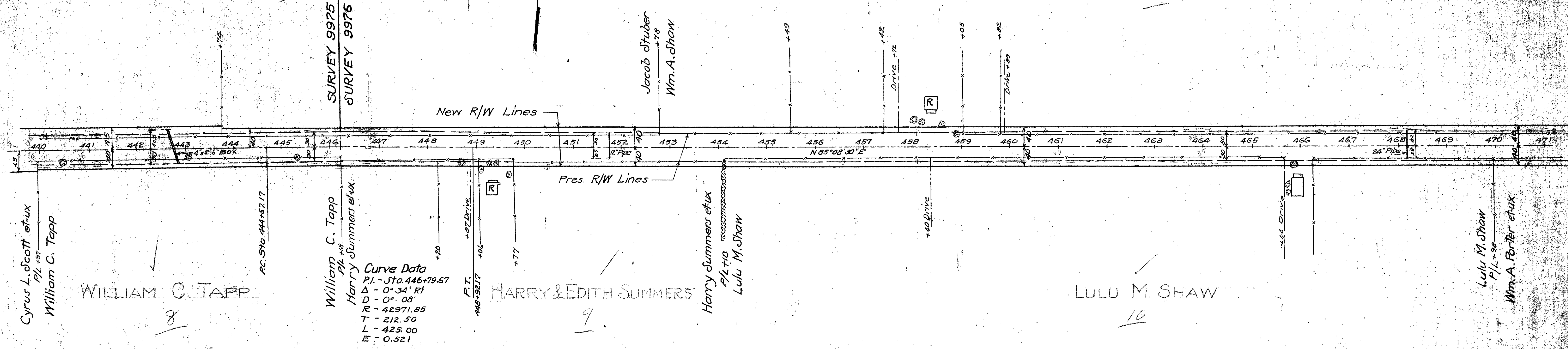
FEE NO.	STATE	PROJECT	FISCAL YEAR
DIST. NO.	OHIO	1940	

LOGAN COUNTY  
S.H. 593 SEC - D  
R/W PLANS

DATE				
REVISED				
LENGTH OF PROJECT				

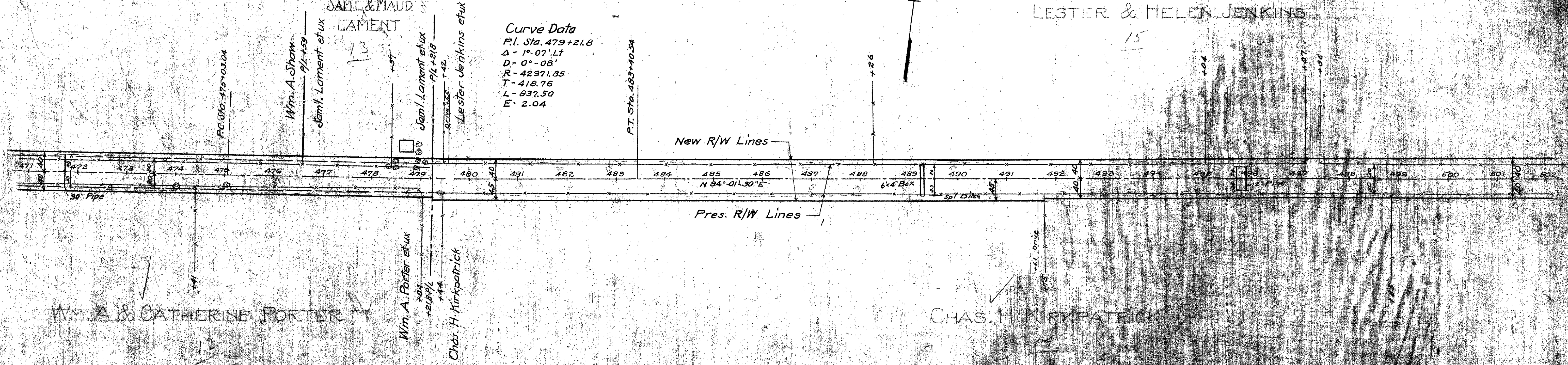
JACOB STUBER  
6

WILLIAM A. SHAW  
11



SURVEY No. 9976

LESTER & HELEN JENKINS  
15





SURVEY No. 9976

RUSHCREEK TOWNSHIP

SURVEY No. 9977

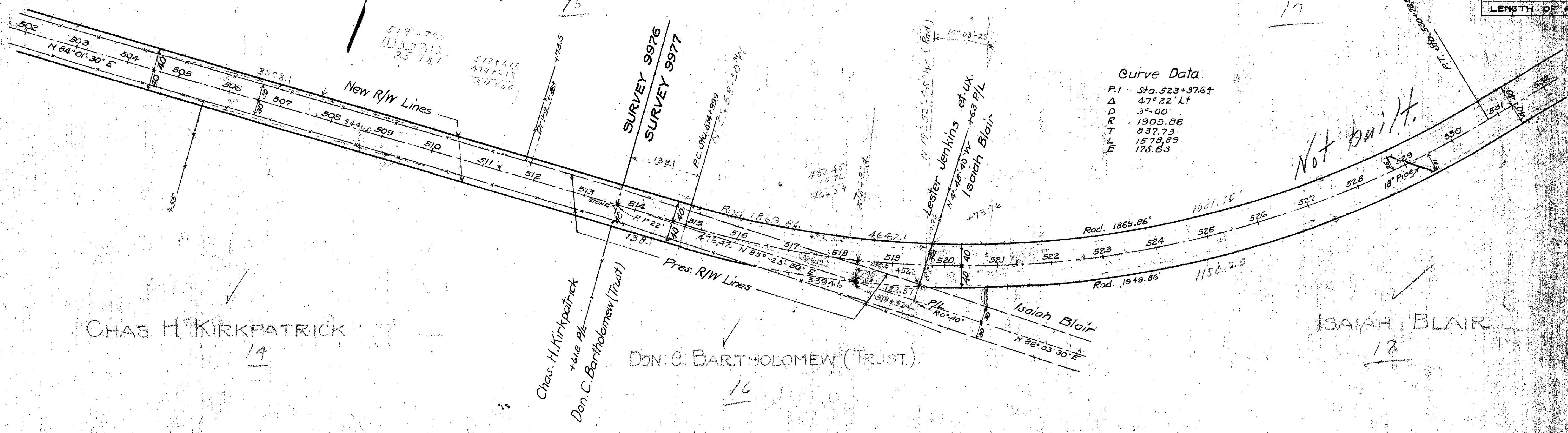
FED. RD. DIST. NO.	STATE	PROJECT	FISCAL YEAR
	OHIO		

LOGAN COUNTY	
S.H. 593 SEC-D	
R/W PLANS	
DATE	
REVISED	
LENGTH OF PROJECT	

LESTER & HELEN JENKINS  
15

ISAIAH BLAIR  
17



CHAS H. KIRKPATRICK  
14

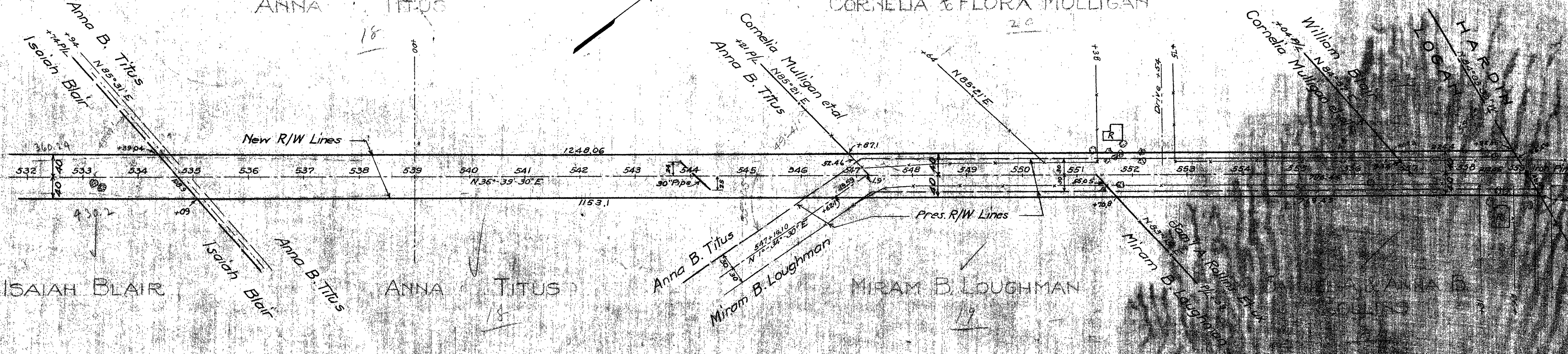
DON C. BARTHOLOMEW (TRUST)  
16

ISAIAH BLAIR  
17

SURVEY No. 9977

ANNA TITUS  
18

CORNELIA & FLORA MULLIGAN  
20



ISAIAH BLAIR

ANNA TITUS  
18

MIRAM B. LOUGHMAN  
19