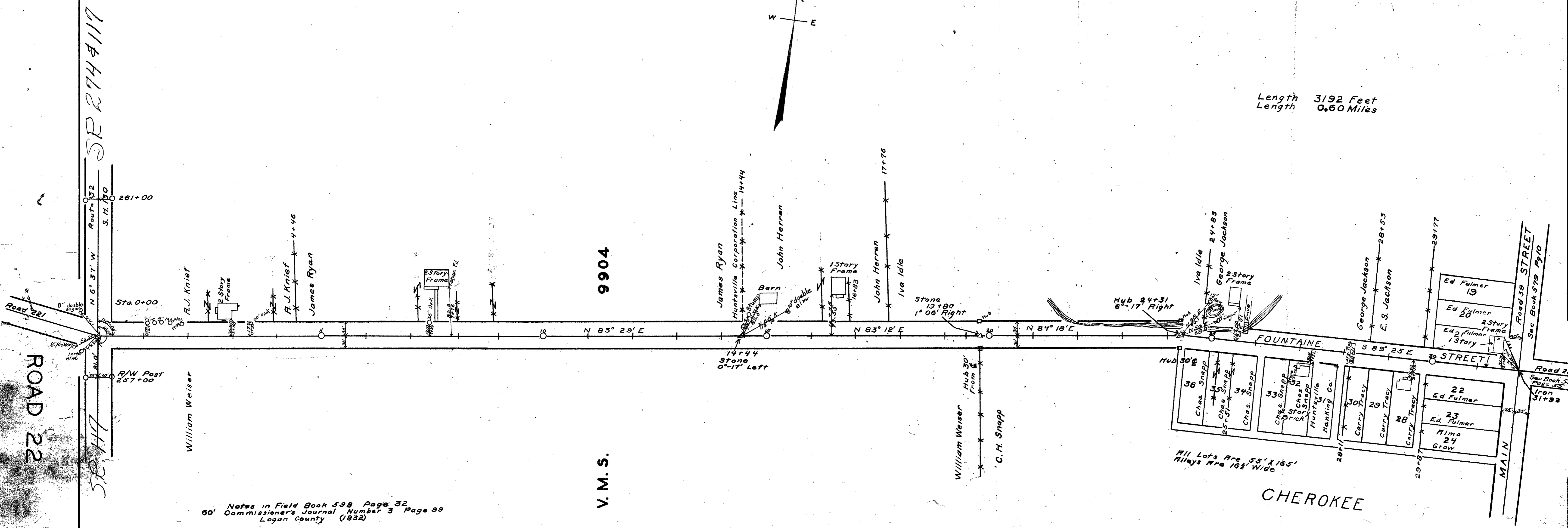


S. R. 274

Length 3192 Feet  
Length 0.60 Miles



Notes in Field Book 598 Page 32  
60' Commissioner's Journal Number 3 Page 99  
Logan County (1832)

Commissioners View June 22, 1936  
Commissioners Hearing June 23, 1936  
Commissioners Hearing on Damages July 23, 1936

Surveyed by F. F. Wright 1936  
Drawn by J. Montgomery 1936

1721  
INDEXED ON MAP



ROAD 22

X-22A

SR 274

SR 274

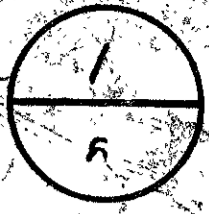
9904

V. M. S.

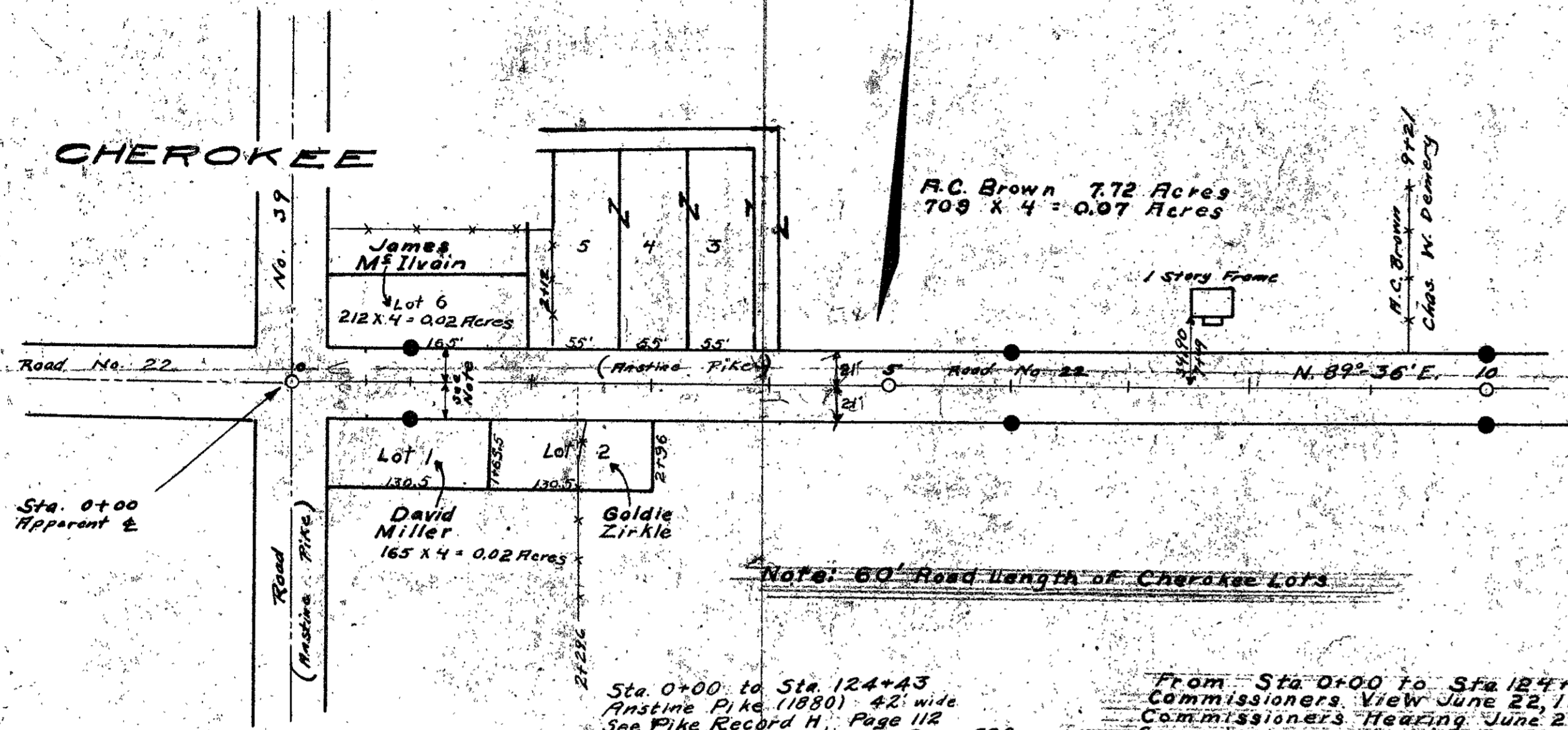
CHEROKEE

FOUNTAIN STREET

See Book 559 Page 52  
See Book 579 Page 10



CHEROKEE



A.C. Brown 7.72 Acres  
 709 x 4 = 0.07 Acres

Note: 60' Road length of Cherokee Lots

Sta. 0+00 to Sta. 124+43  
 Anstine Pike (1880) 42' wide  
 See Pike Record H, Page 112  
 See Free Turnpike Record 3, Page 586

Sta. 124+43 to Sta. 212+45.5  
 Monuments set 50'

Sta. 212+45.5 to Sta. 222+83  
 Old S.H. 228  
 60' wide

Sta. 222+83 to Sta. 233+78  
 Monuments set 50'

Sta. 233+78 to Sta. 368+83  
 Harper, Rushsylvania Pike (1882) 50' wide  
 See Free Turnpike Record 6, Page 583

Field notes Logan County Surveyors  
 Book No. 338 Pages 67 and 72  
 " " " Pages 71 to 73

From Sta. 0+00 to Sta. 124+43 to obtain 50' Right of Way  
 Commissioners View June 22, 1936  
 Commissioners Hearing June 29, 1936  
 Commissioners Hearing on Damages July 23, 1936

ROAD 22

Charles Demery 64.50 Acres  
 Sta. 233+78 to 20+11 1090 x 4 = 0.10 Acres  
 Sta. 43+70 to 49+45 605 x 4 = 0.08 Acres

Goldie Zirkle 55.60 Acres  
 1123 x 4 = 0.10 Acres

Charles Demery 44 Acres  
 722 x 4 = 0.07 Acres

Note: Station 16 to 17 is 102.00'

Harvey Nelson 110.51 Acres  
 Sta. 20+11 to 43+70 2329 x 4 = 0.21 Acres  
 Sta. 20+11 to 34+70 1459 x 4 = 0.15 Acres

Resurveyed 1934 and concrete right-of-way posts set as shown

Drawn By  
 H. W. Waugh



Chas W. Demery 43+70  
 Johnson Nelson

Lester Milroy 105.40 Acres  
 Sta. 37+41 to 72+62 = 3521 x 4 = 0.32 Acres  
 Sta. 66+86 to 72+62 = 576 x 4 = 0.05 Acres

Lester Milroy 82+41  
 John E. Farwell  
 Robert Milroy

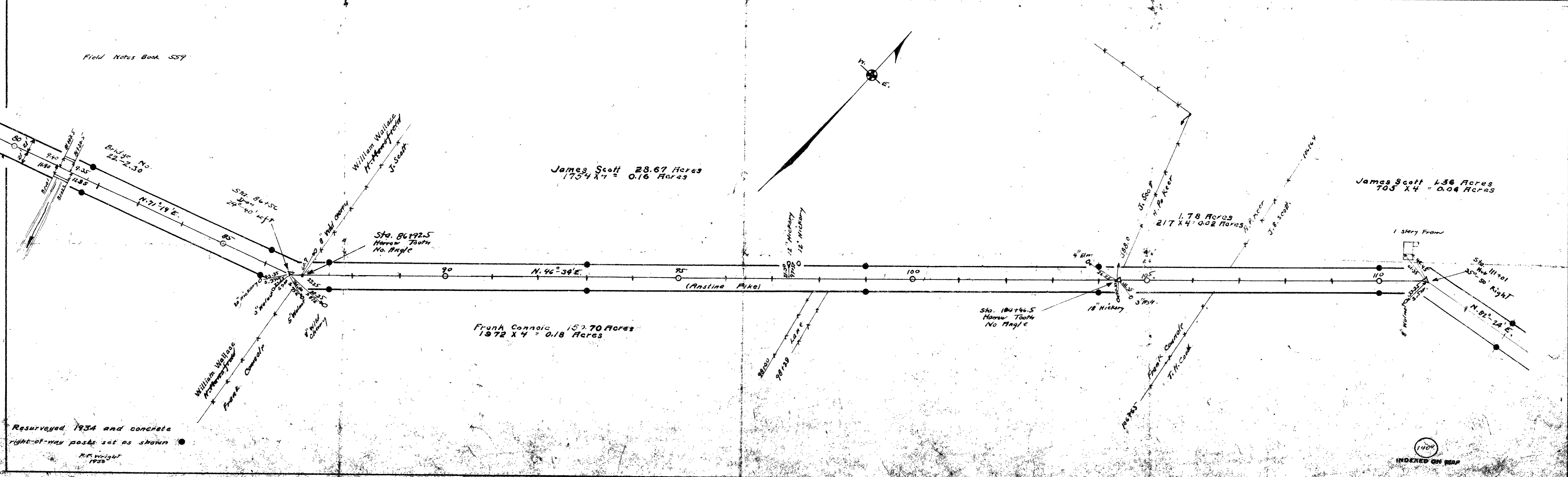
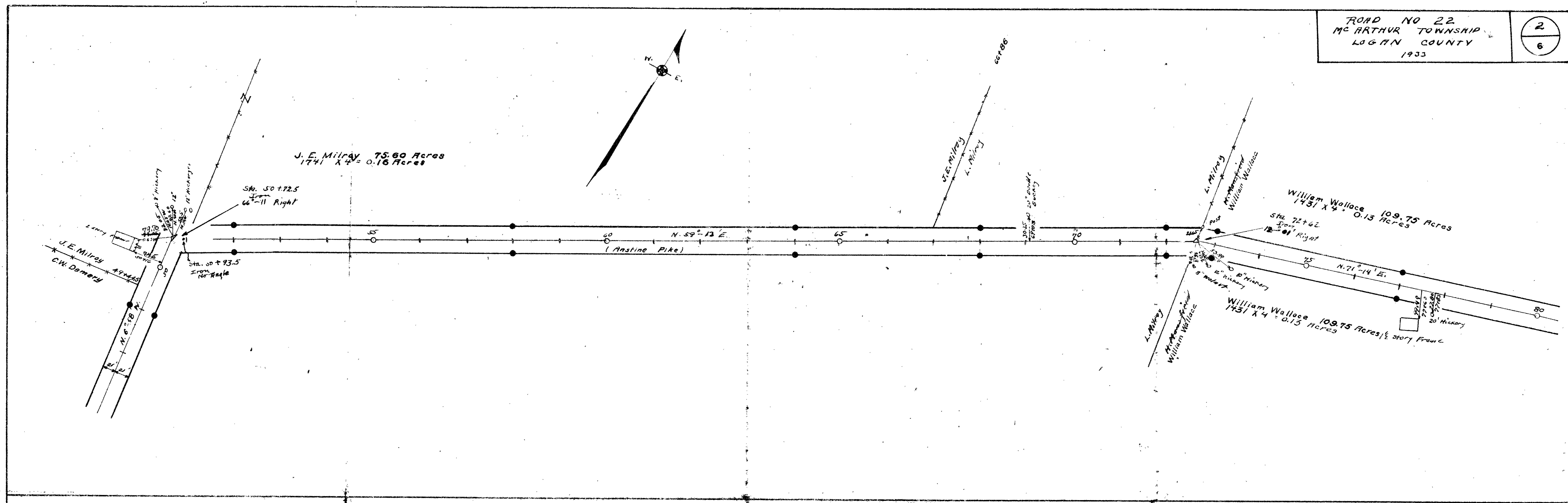
Robert Milroy 52 Acres  
 271 x 4 = 0.02 Acres

Sta. 34+70 Iron  
 96 x 32' Left

Sta. 28+24  
 2°-15' Angle to left

Bridge No. 238  
 0.45

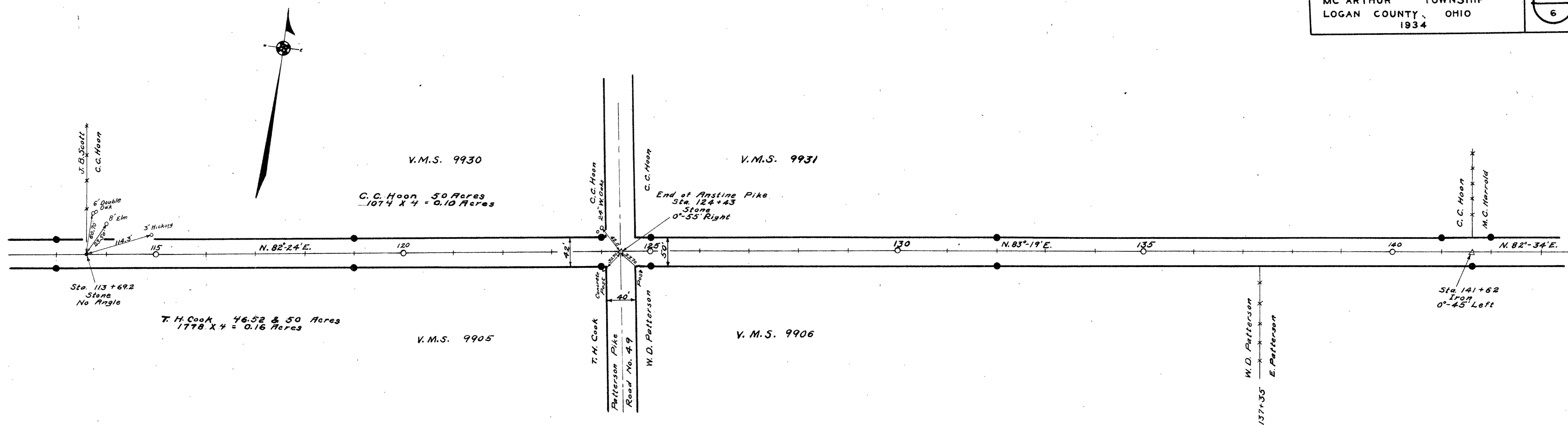
X-22B



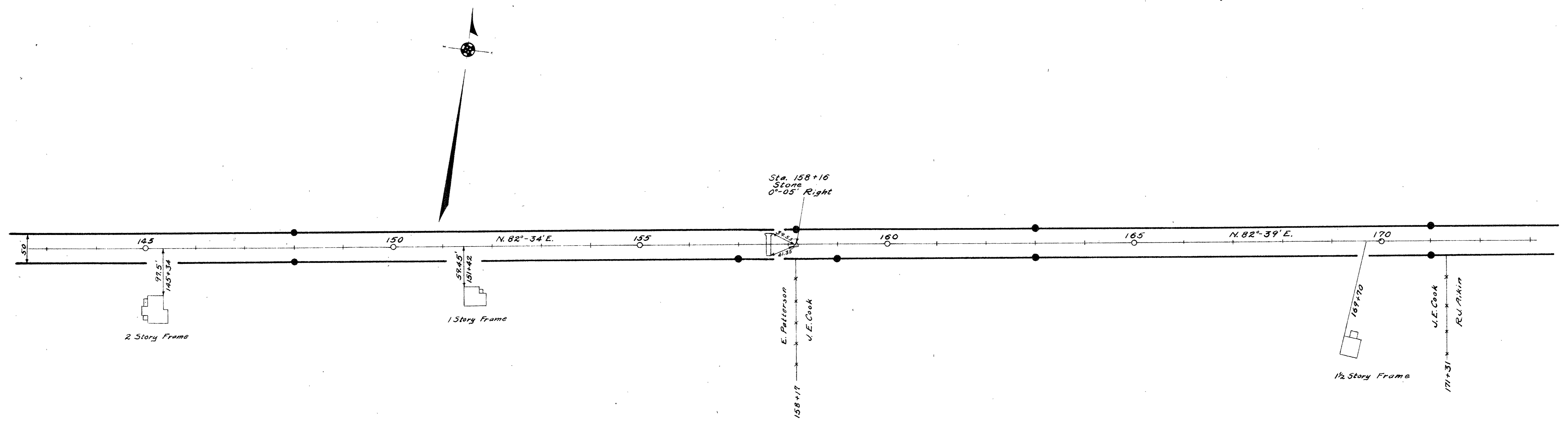
Field Notes Book 557

Resurveyed 1934 and concrete  
 right-of-way posts set as shown  
 R.R. Wright  
 1903

1400  
 INDEXED ON MAP

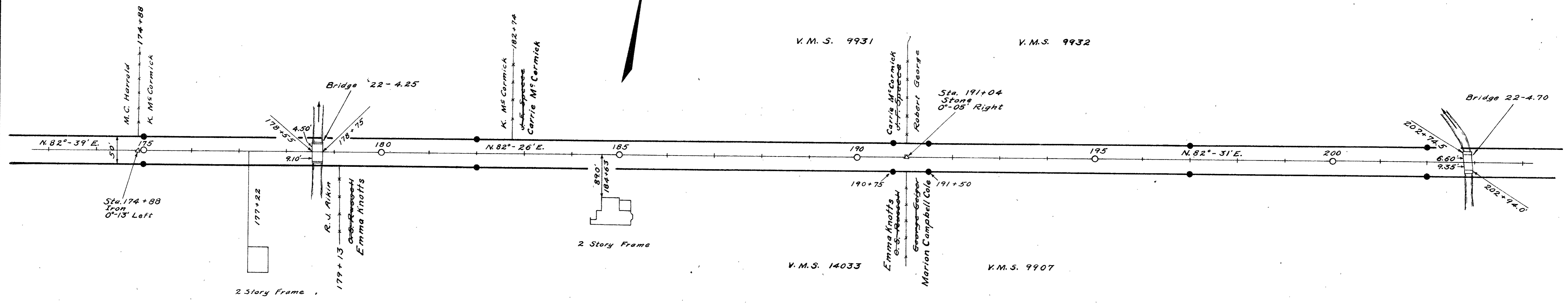


Concrete right-of-way posts set as shown ●  
 Field Notes Book 559

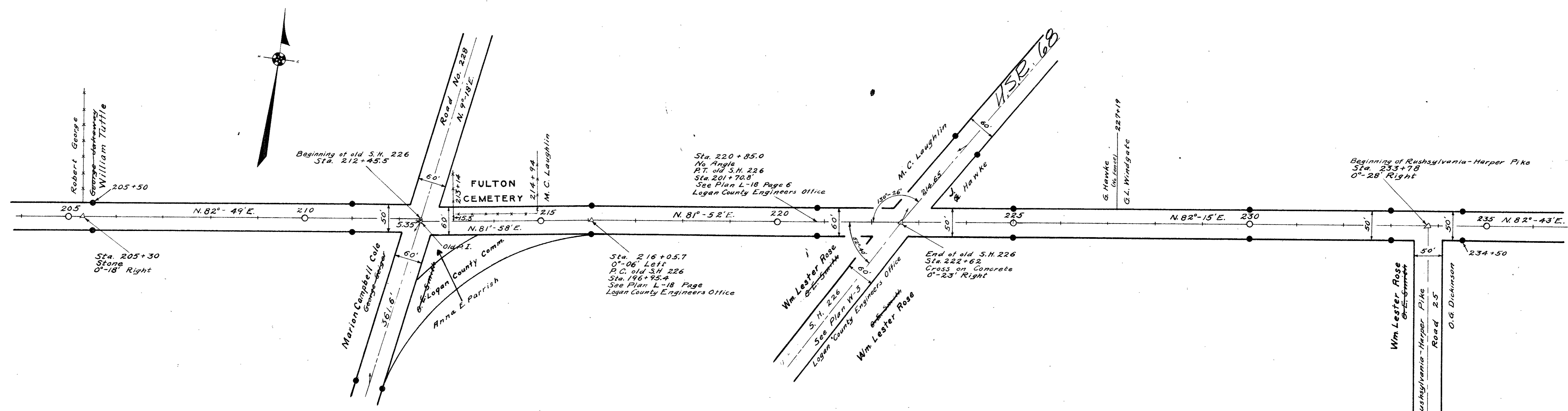


Surveyed By F.F. Wright  
 1934  
 Drawn By E.K. Cere  
 1930

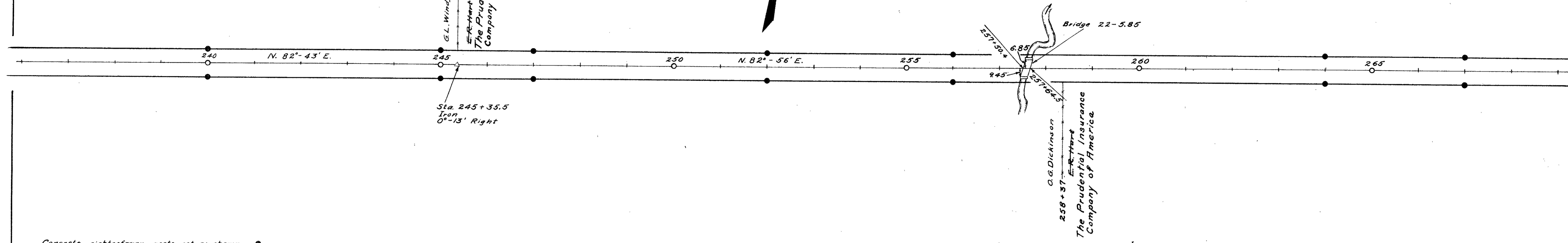
1409  
 INDEXED ON MAP



Concrete right-of-way posts set as shown ●  
 Field Notes Book 559  
 Logan County Engineers Office

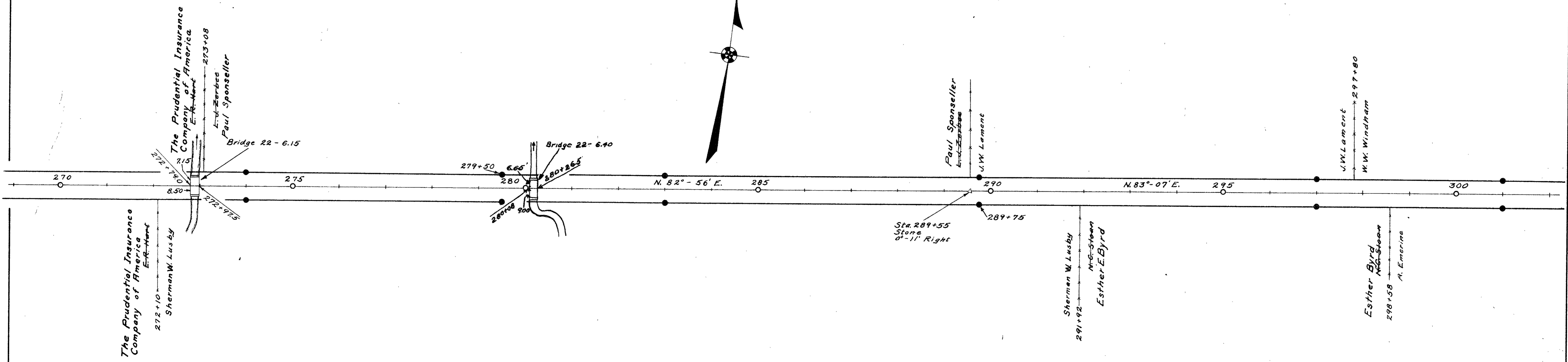
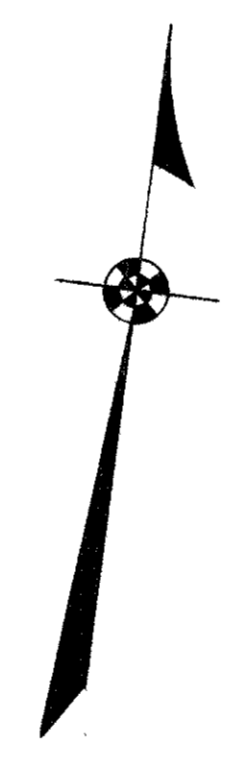


Surveyed By F.F. Wright  
 Feb. 1934  
 Drawn By E.K. Core  
 March 1936

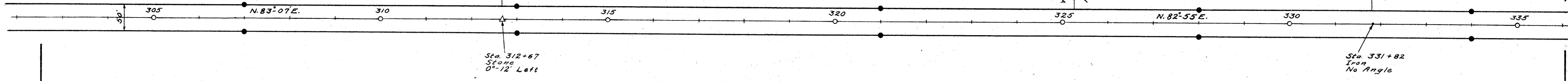


Concrete right-of-way posts set as shown ●

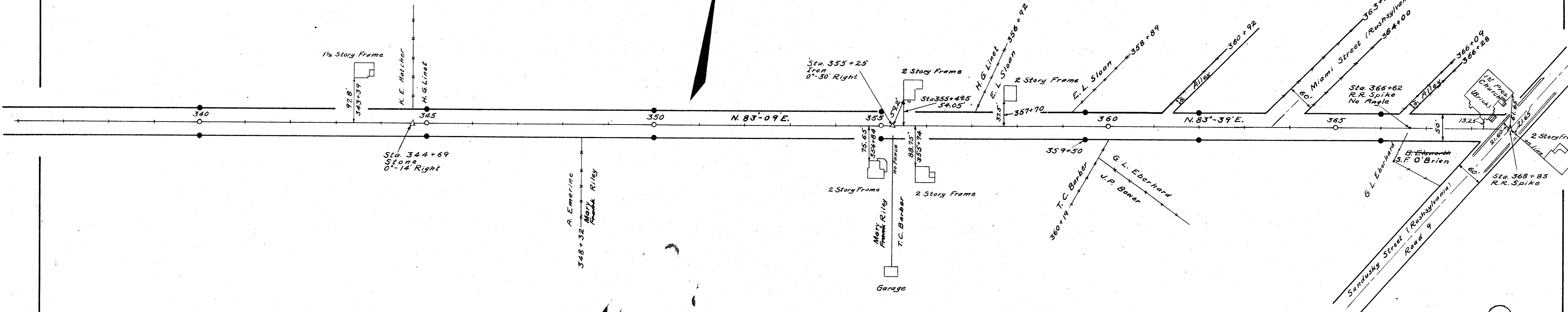
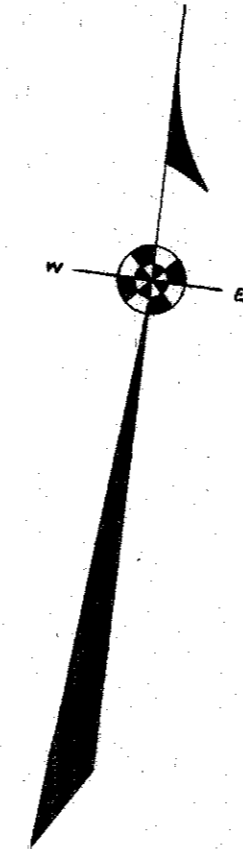
Field Notes Book 559  
Logan County Engineers Office



Surveyed By F.F. Wright  
Feb. 1934  
Drawn By E.K. Cox  
March 1936



Concrete right-of-way posts set as shown ●  
Field Notes Book 559  
Logan County Engineers Office



Surveyed By F.F. Wright  
February - 1934  
Drawn By - E.M. Carr  
March - 1934