

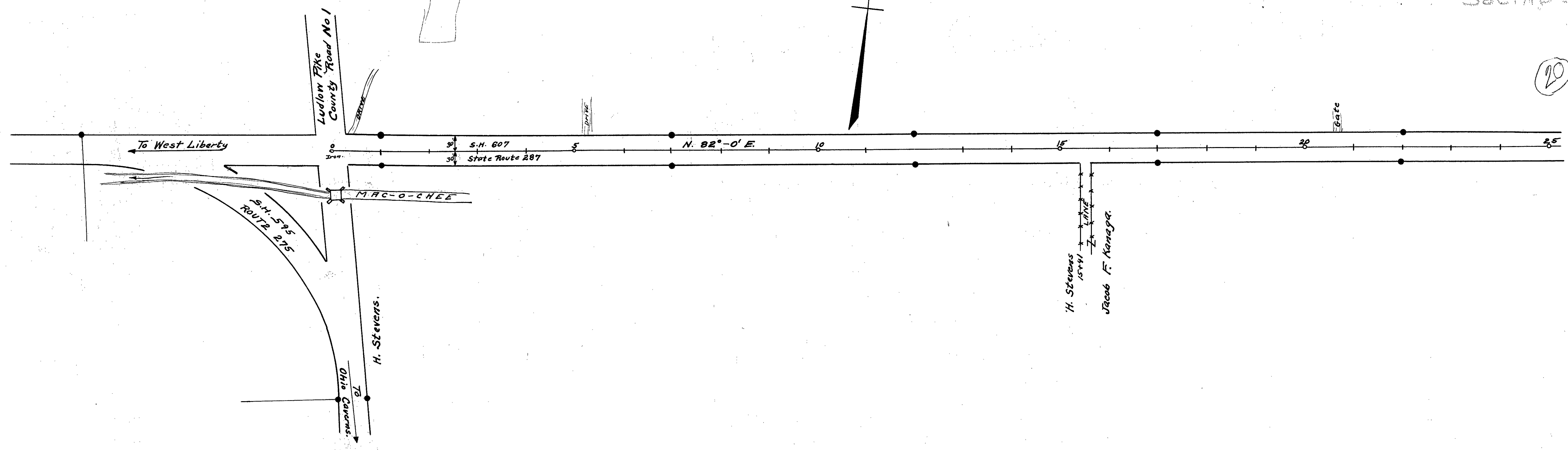
L-25

● Indicates R/W Monuments.

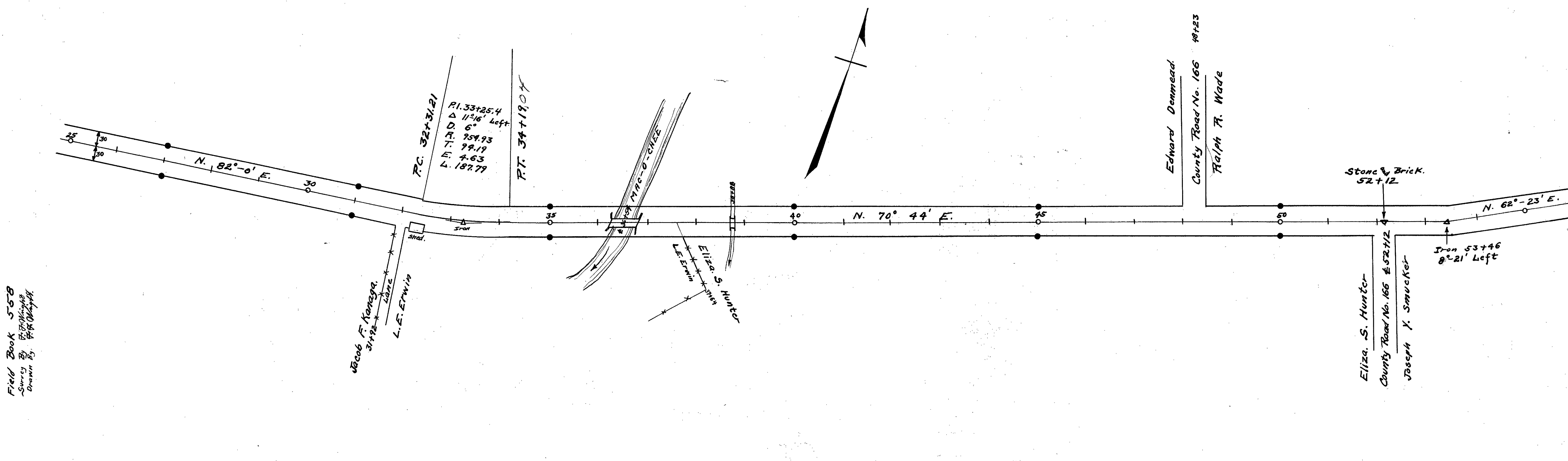
S.K. 287
 LOGAN COUNTY
 S.H. 607
 R/W PLANS
 Sec. 18 & 19

1
10

20



L-25



Field Book 558
 Survey By F. F. ...
 Drawn By F. F. ...

L-25

4-25

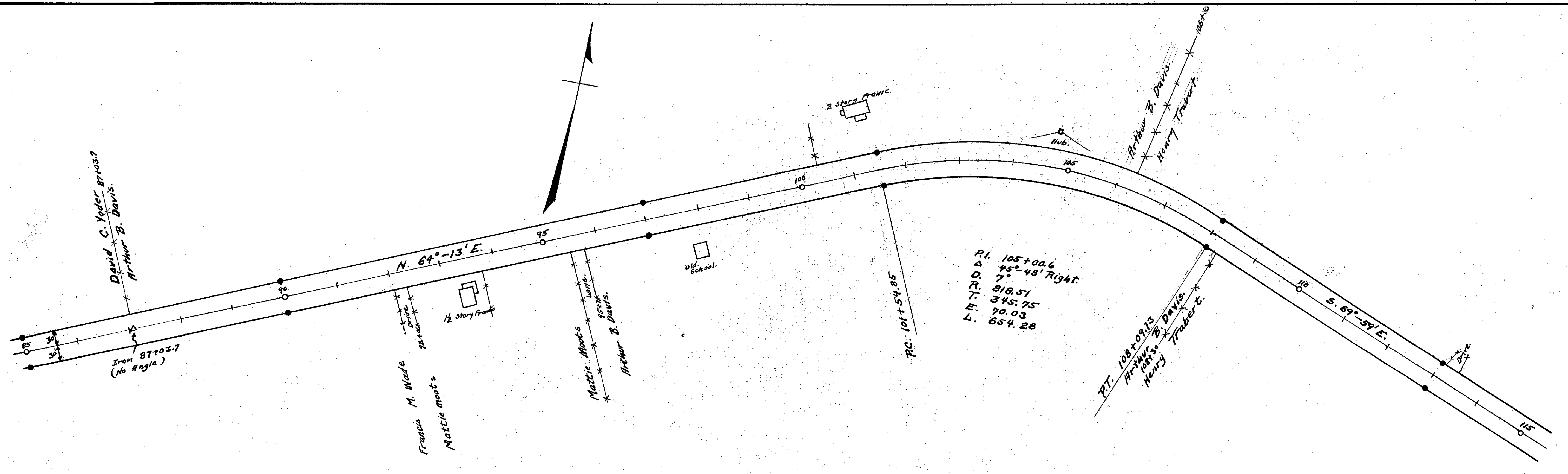
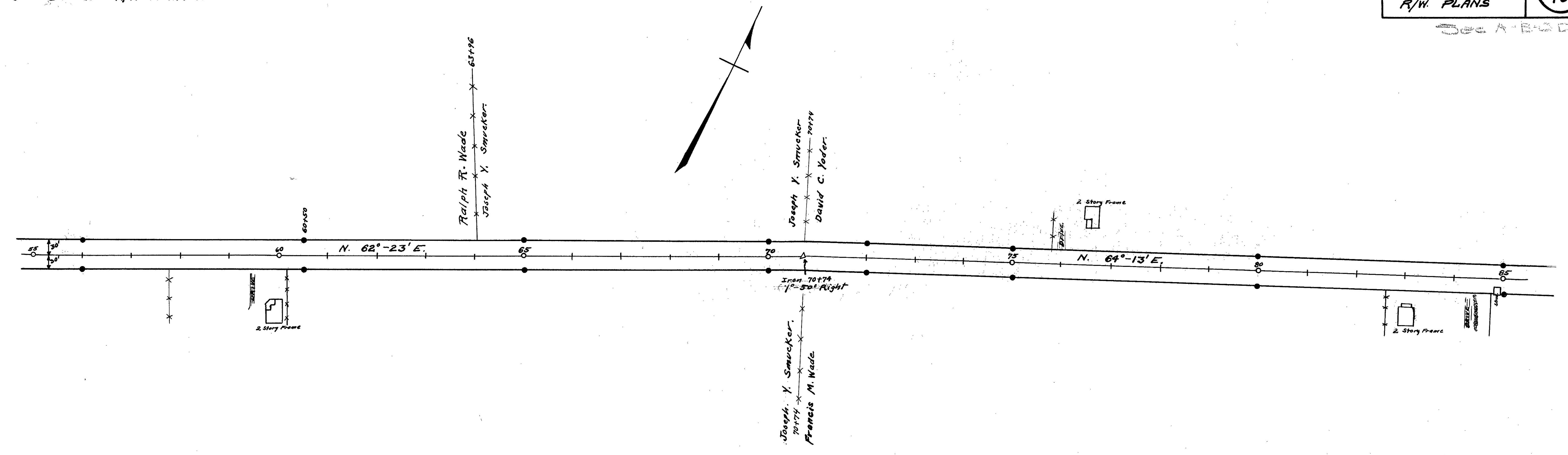
S.R. 287

LOGAN COUNTY
S.H. 607
R/W PLANS

2
10

See A-B-C-D

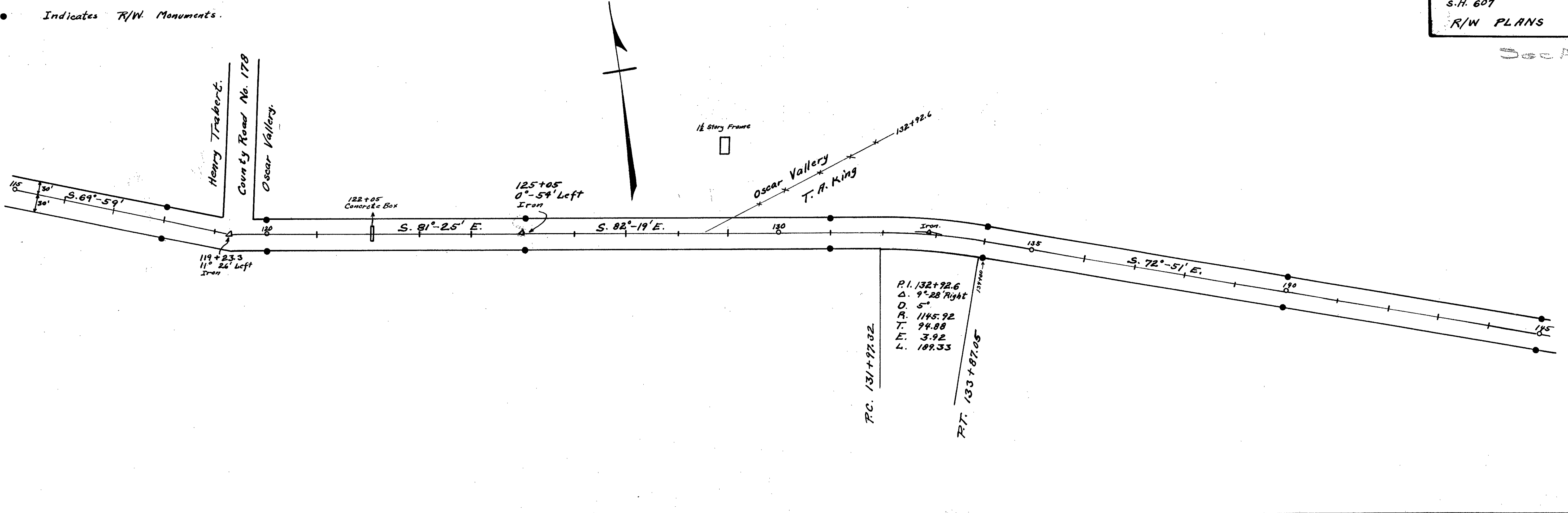
● Indicates R/W Monuments



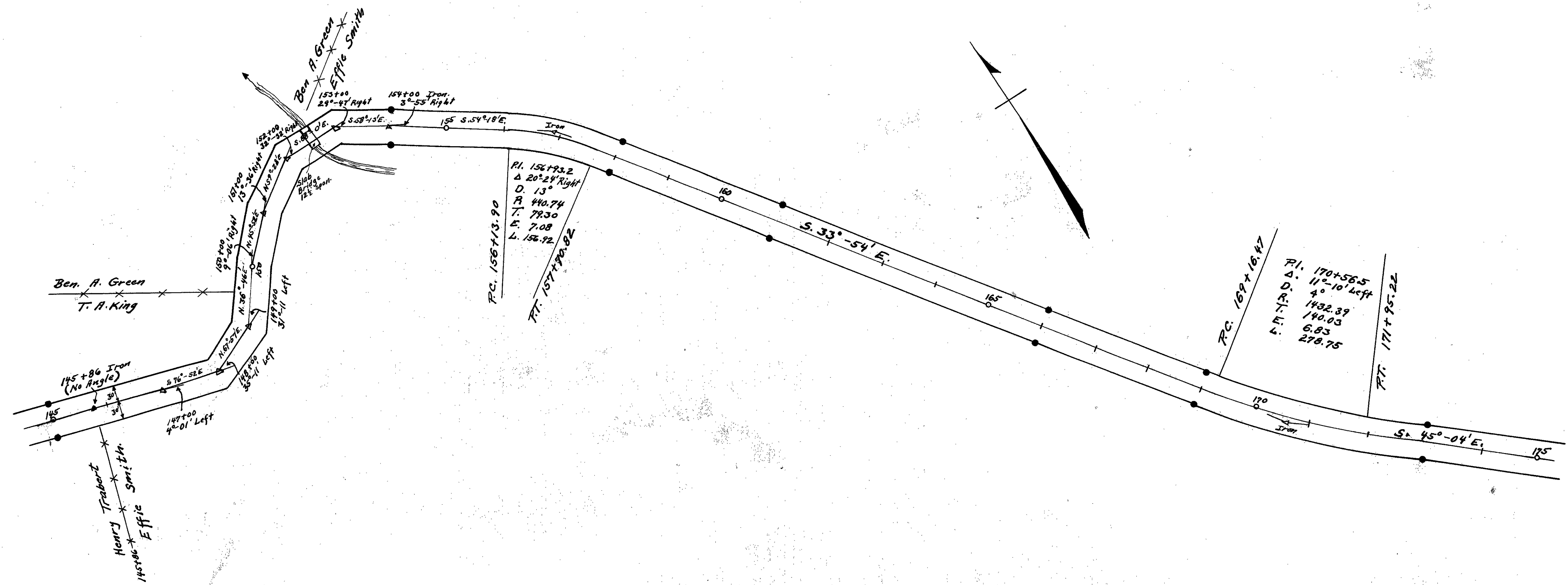
P.I. 105+00.6
 Δ $45^{\circ}-48'$ Right
 D. 7'
 R. 818.51
 T. 345.75
 E. 70.03
 L. 654.28

Field Book 558

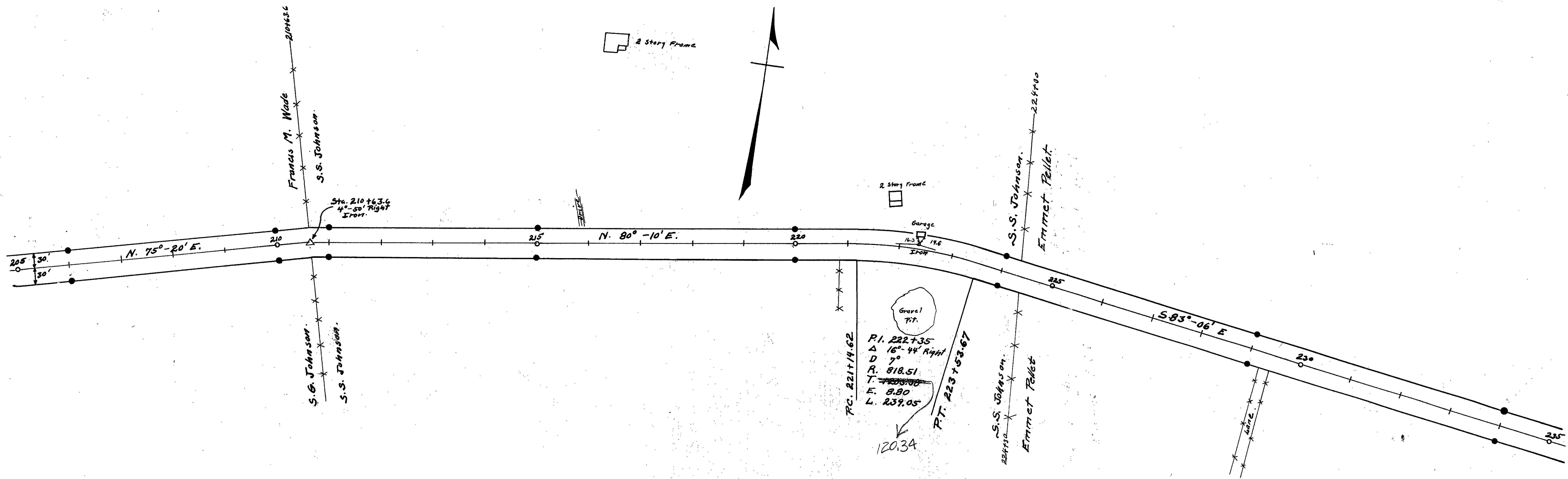
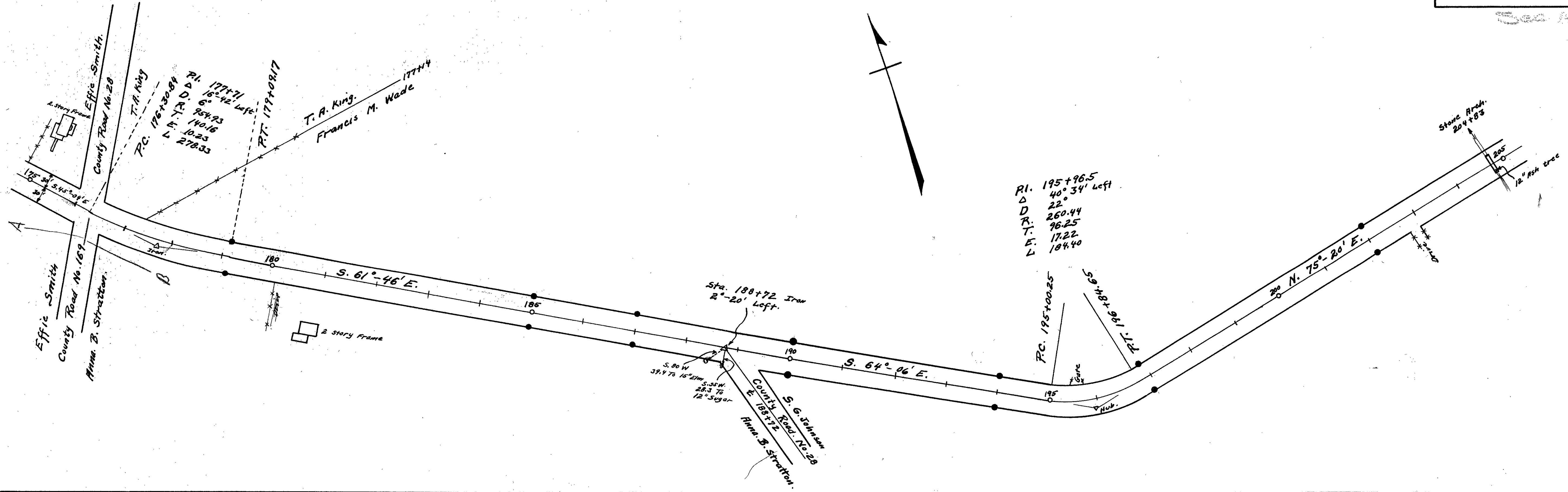
• Indicates R/W Monuments.



Book 558



• Indicates R/W Monuments



Book 558

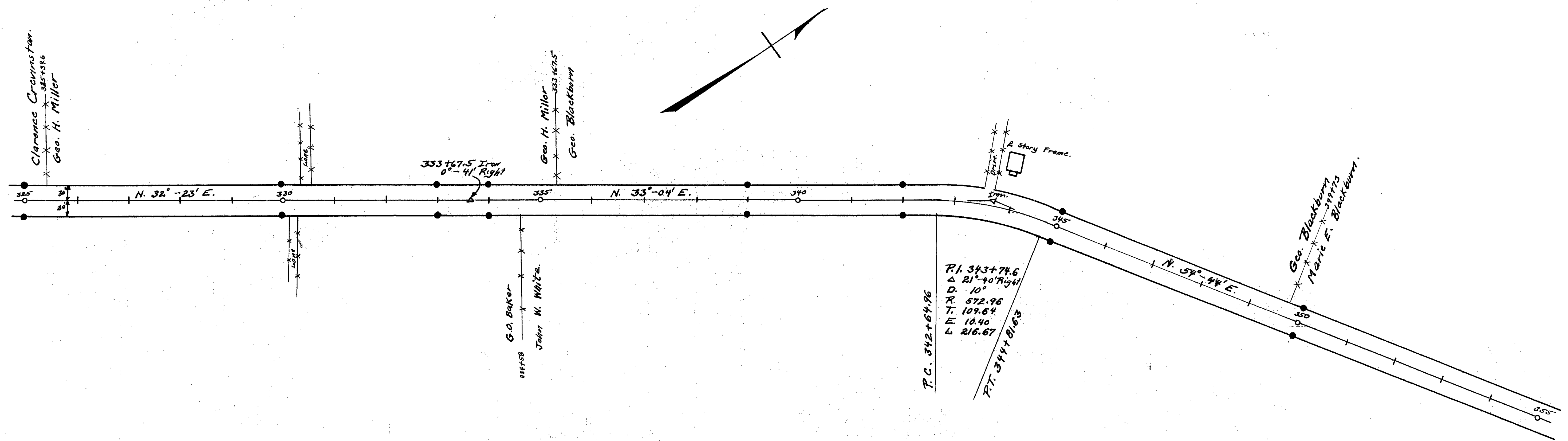
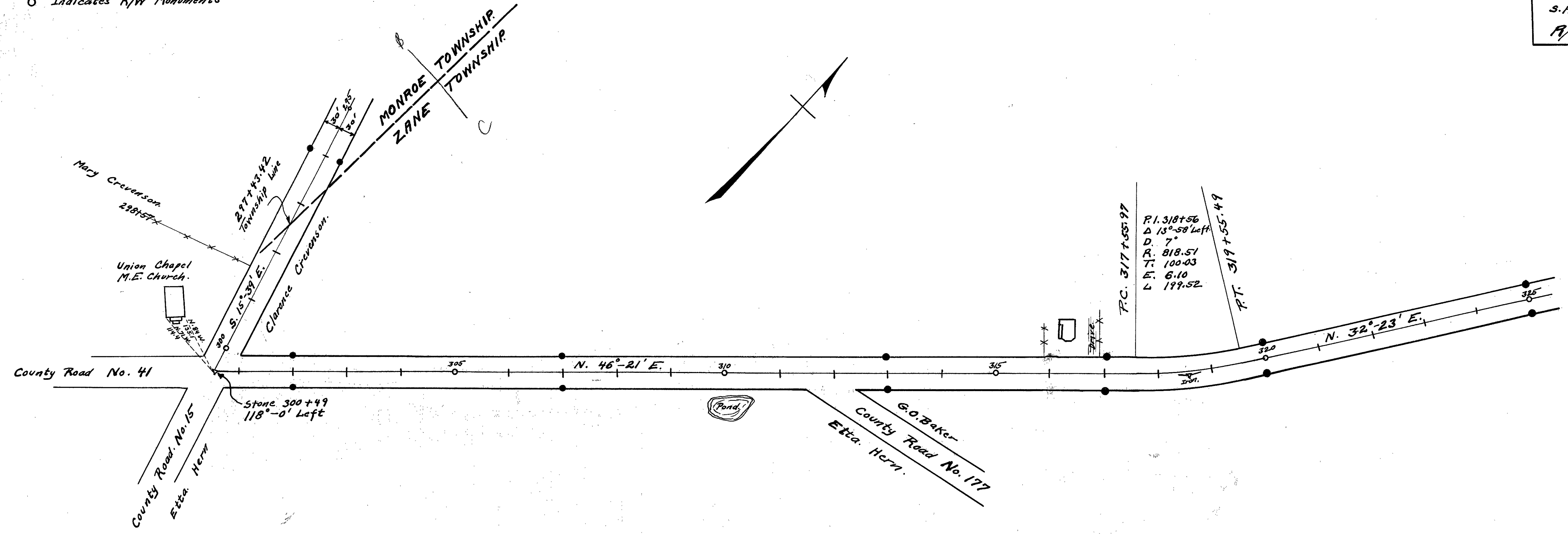
4-25

○ Indicates R/W Monuments

LOGAN COUNTY
S.H. 607
R/W PLANS

6
10

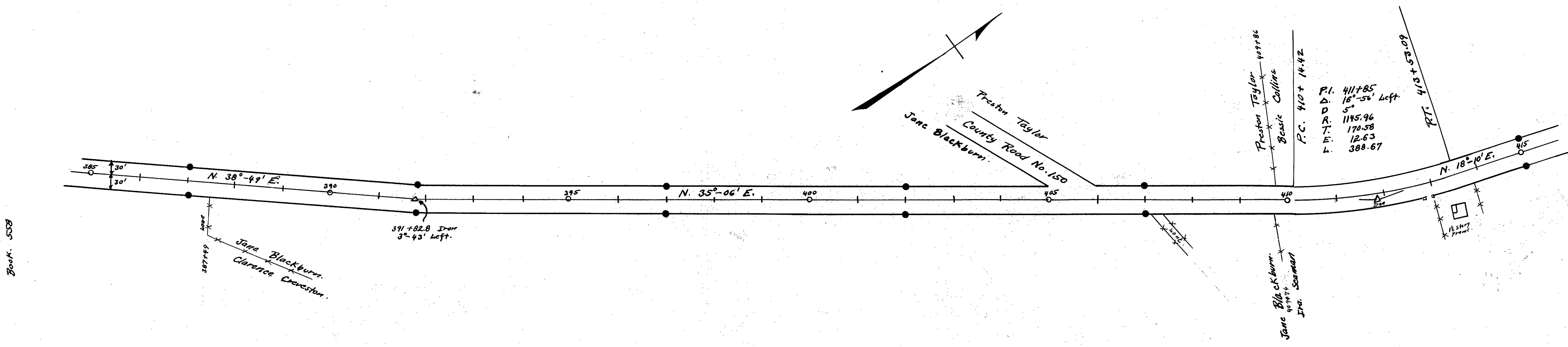
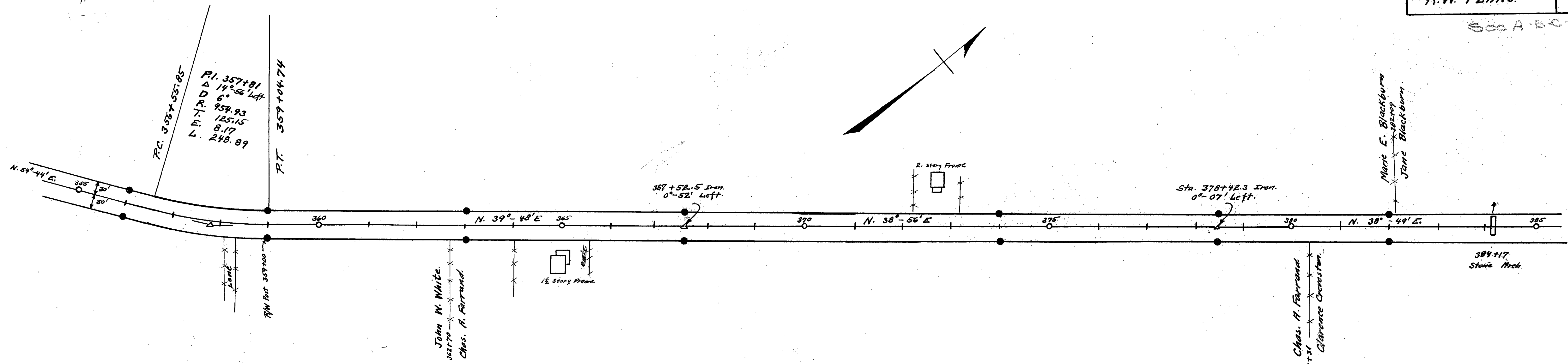
Sec A B C D.



Book 55B

See A, B, C, D.

Indicates R/W Monuments.



Book 558

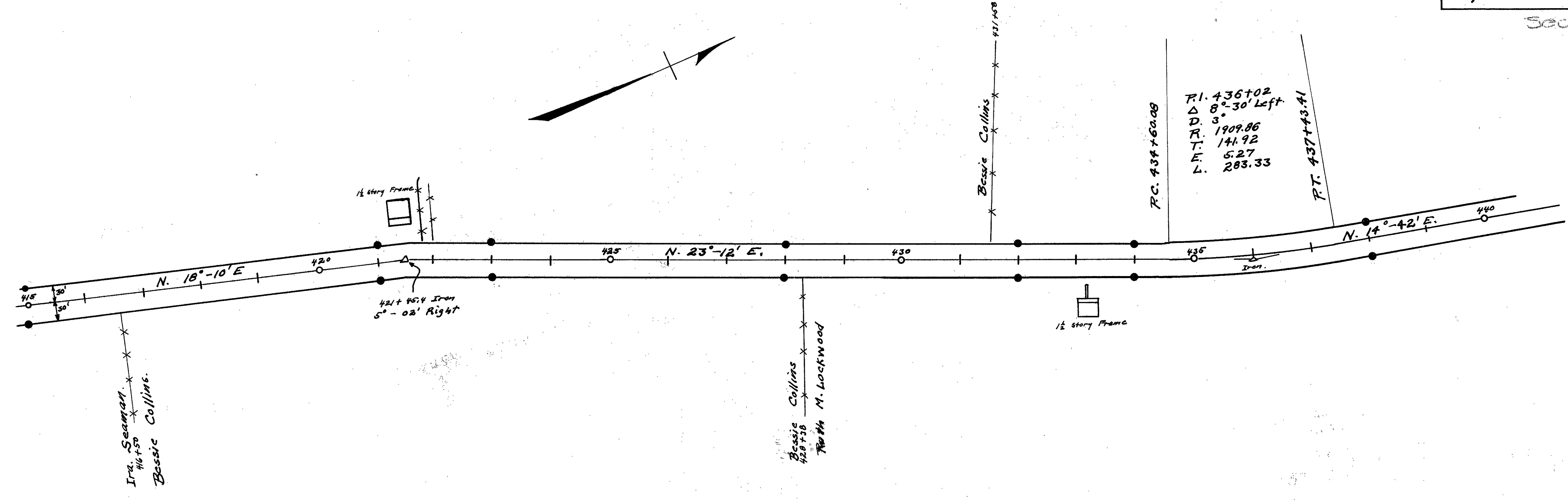
52-7

LOGAN COUNTY
S.H. 607
R/W PLANS.

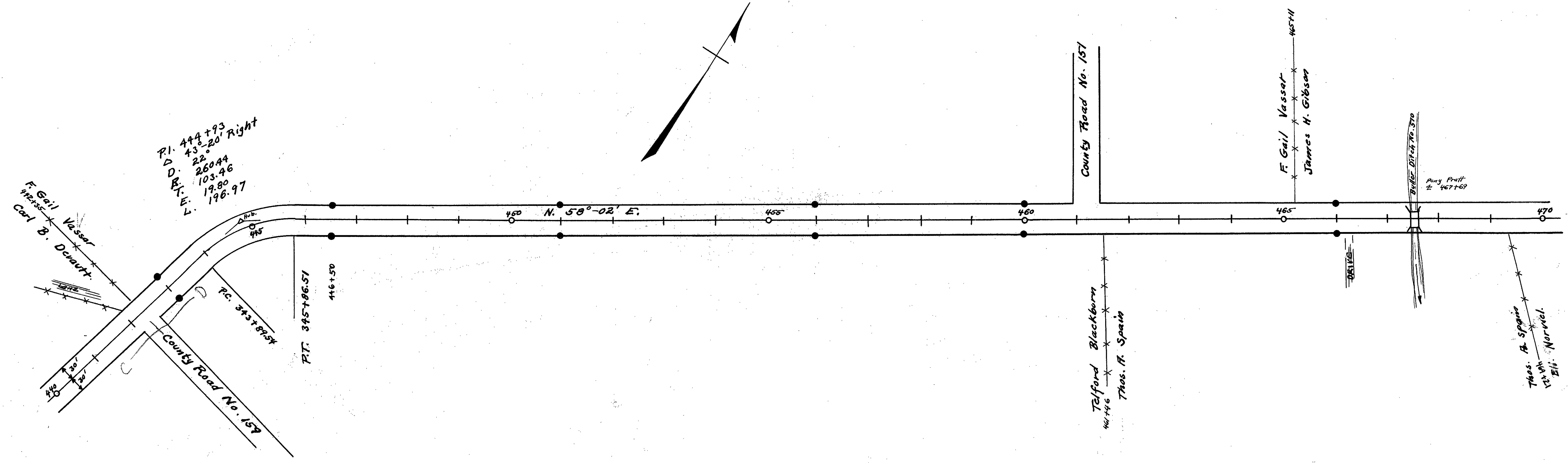
8
10

Sec A-B-C-D

● INDICATES R/W MONUMENTS



Book 558



4-25

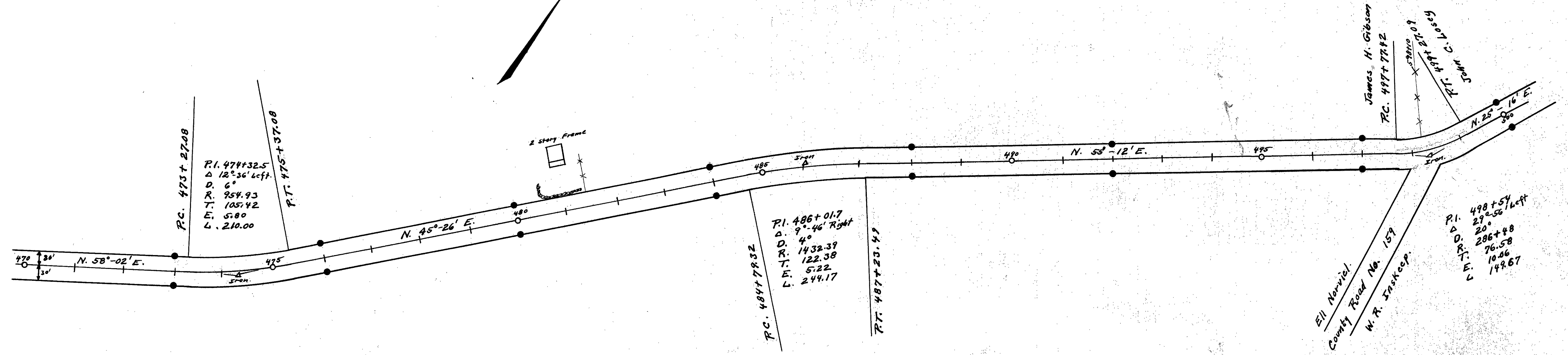
S.R. 287

LOGAN COUNTY
S.H. 607
R/W PLANS

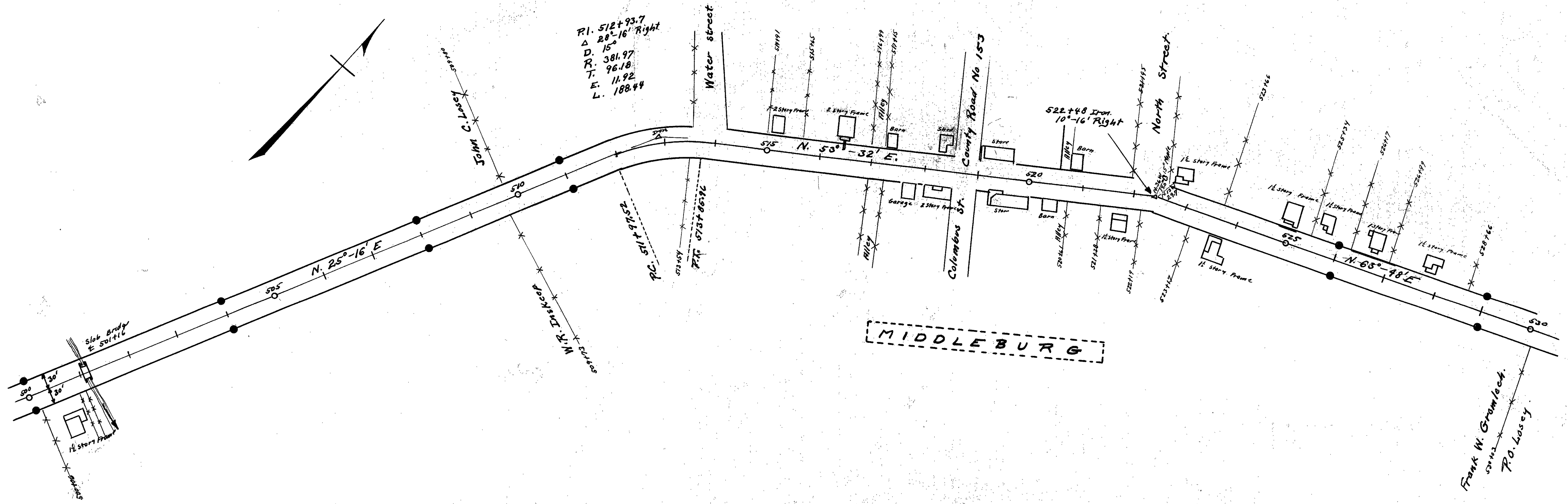
9
10

See A-1500

● Indicates R/W Monuments.



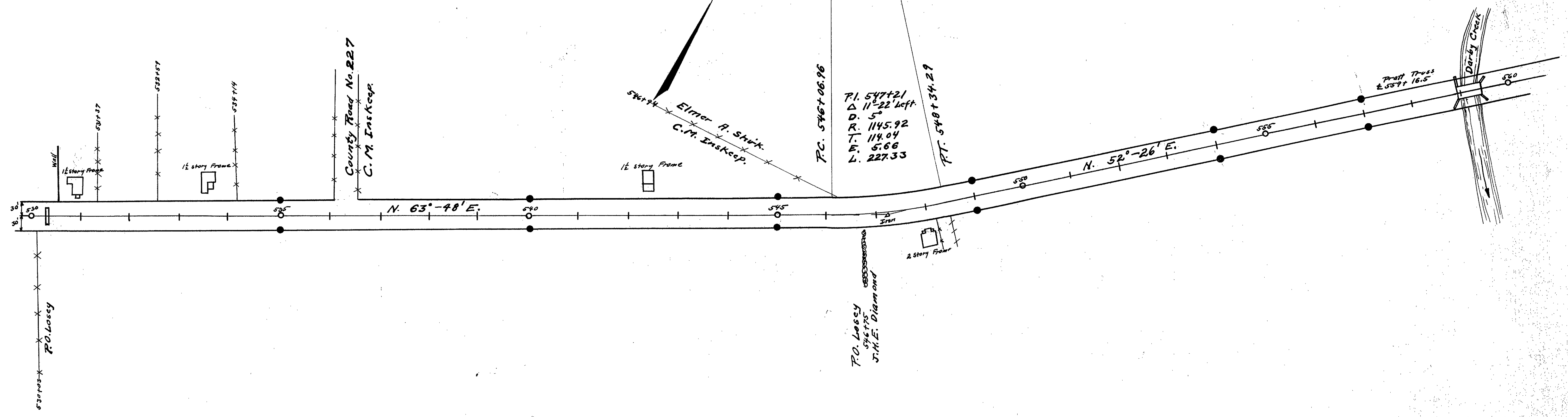
Book 558



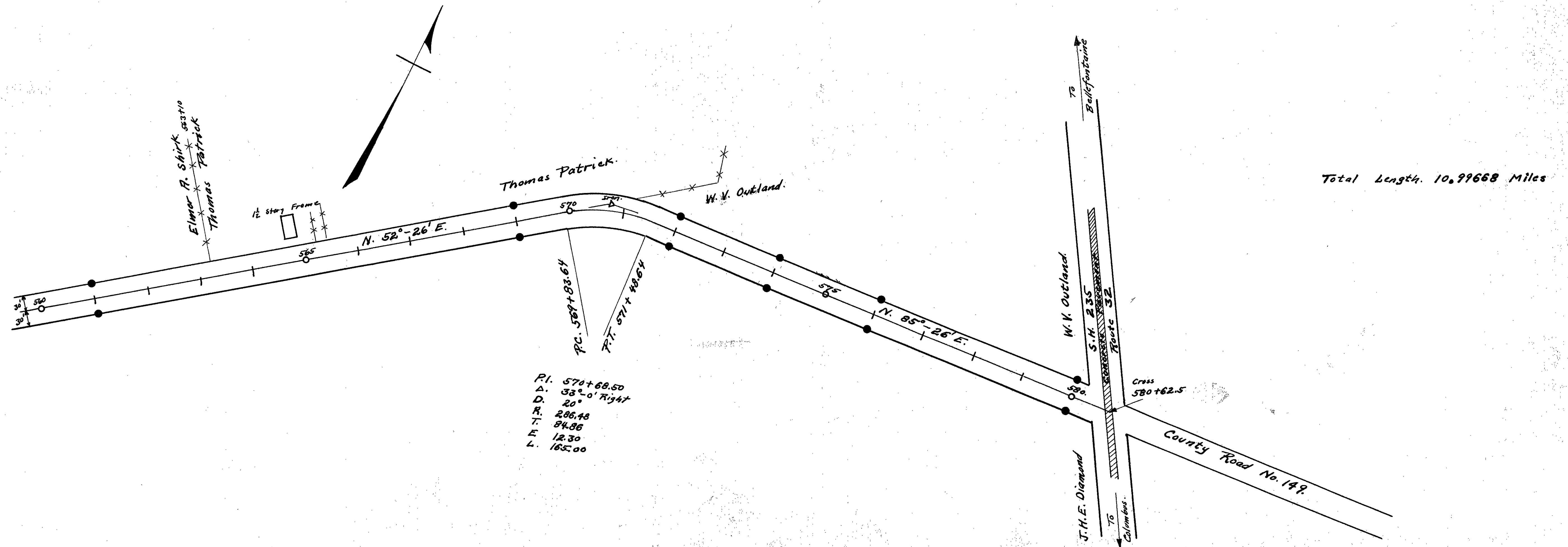
52-7

● INDICATES R/W MONUMENTS

See A-B-C-D



Book 558



Total Length. 10.99668 Miles

P.I. 570+68.50
 Δ. 33°-0' Right
 R. 20'
 T. 286.48
 E. 84.86
 L. 165.00

W.V. Outland
 S.H. 235
 Route 32
 Cross 580+62.5

J.H.E. Diamond
 To Columbus

County Road No. 199