

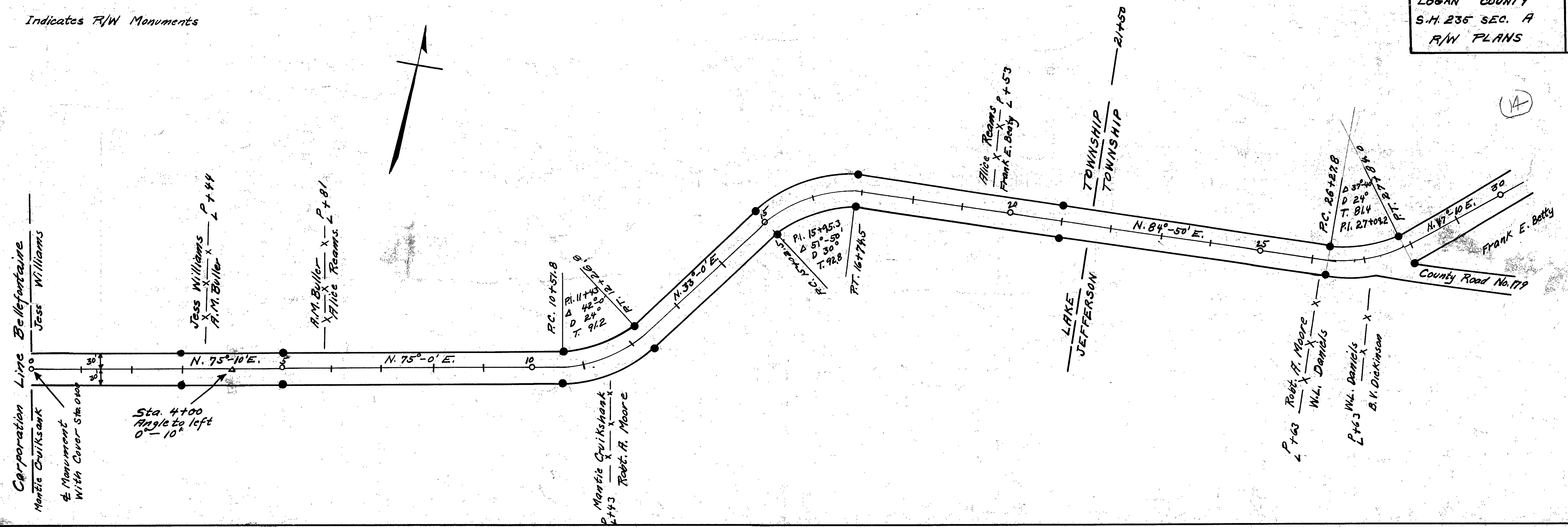
1-24

● Indicates R/W Monuments

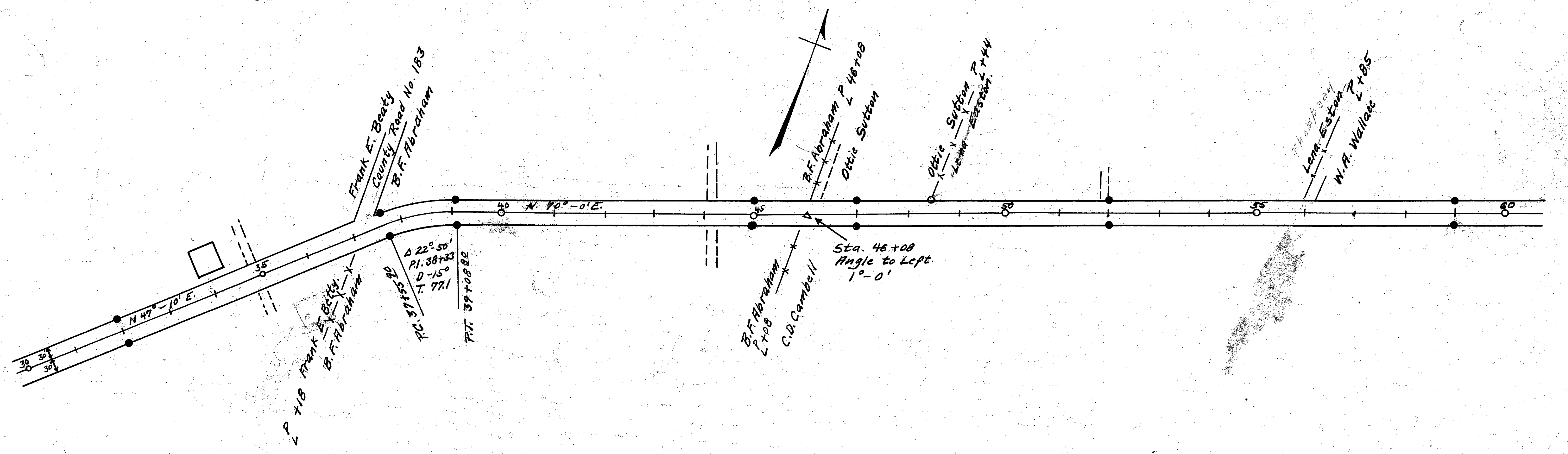
LOGAN COUNTY  
S.M. 235 SEC. A  
R/W PLANS

1  
15

L-24



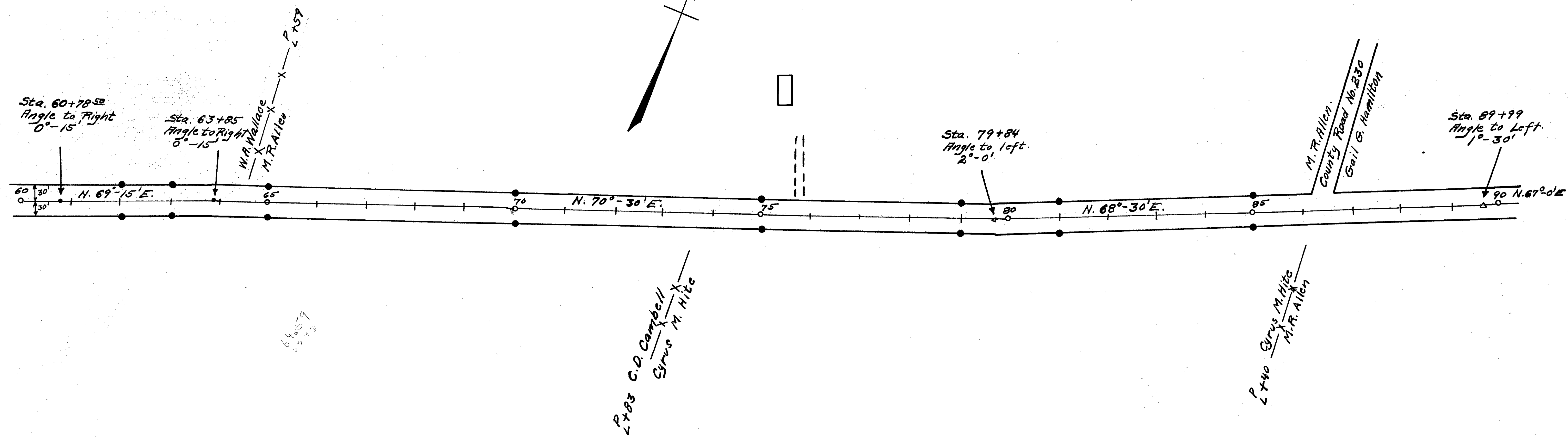
Field Notes in Logan County  
Surveyors Book No. 570  
For Plan & X-sec. Sec. L-6



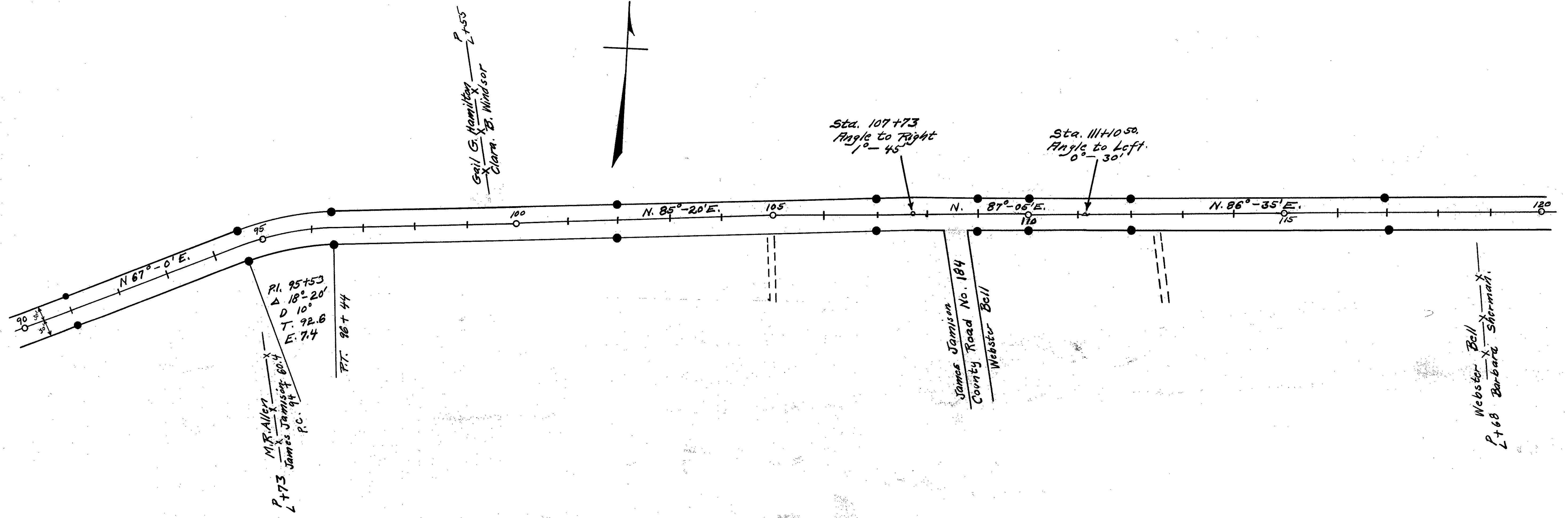
L-24

01d

● Indicates R/W Monuments.



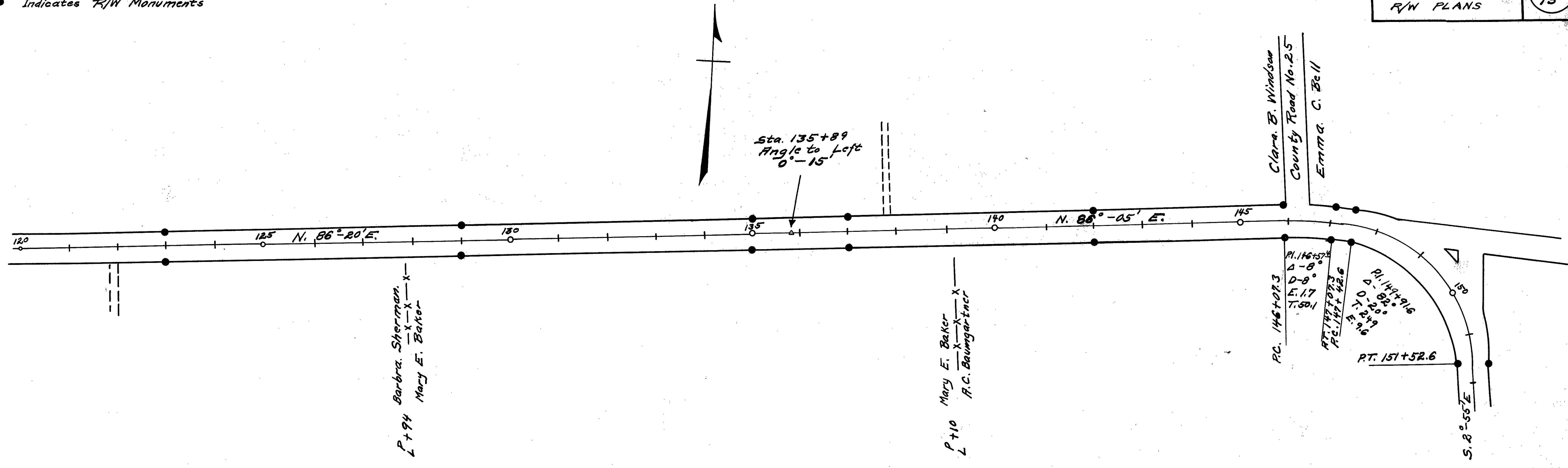
Field notes in Logan County  
Surveyor's Book No 520



L-24

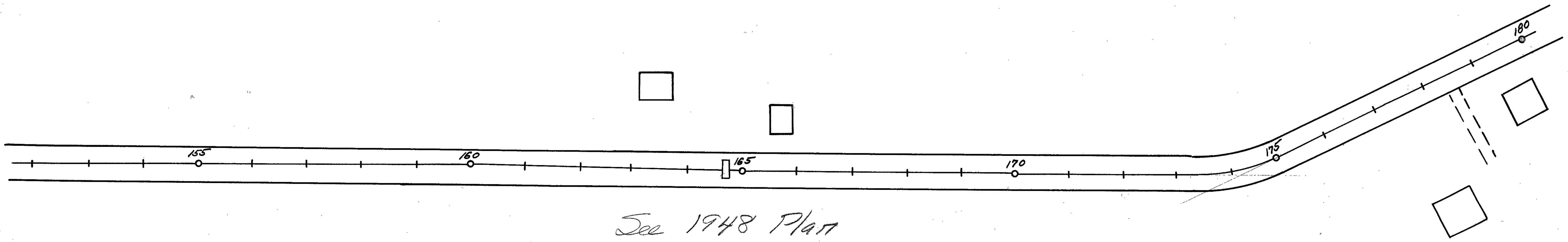
L-24

• Indicates R/W Monuments



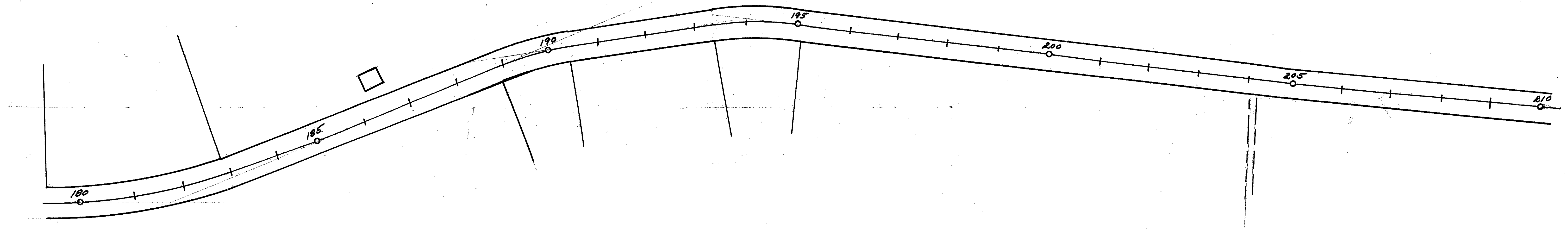
Field Notes in Logan  
County Surveyor's Book  
No. 520

No Monuments Set, Sta. 151+52.6  
to Zanesfield. 50' Width

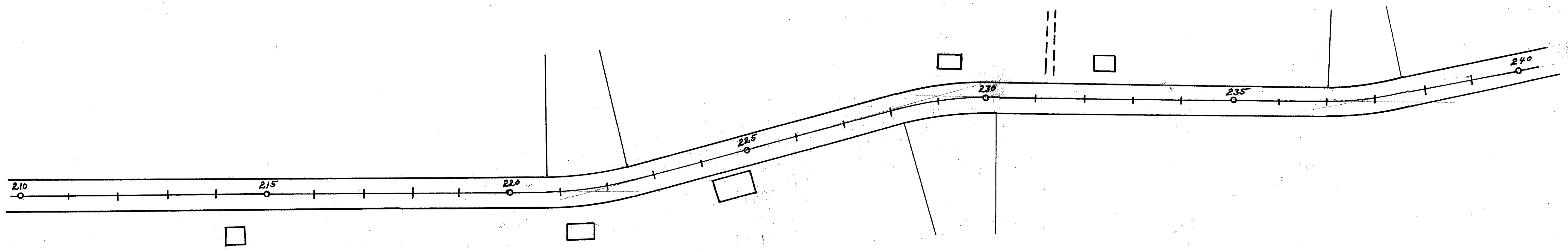


See 1948 Plan  
LDG-33-22.52  
Br. No. LD 33-228

42-7

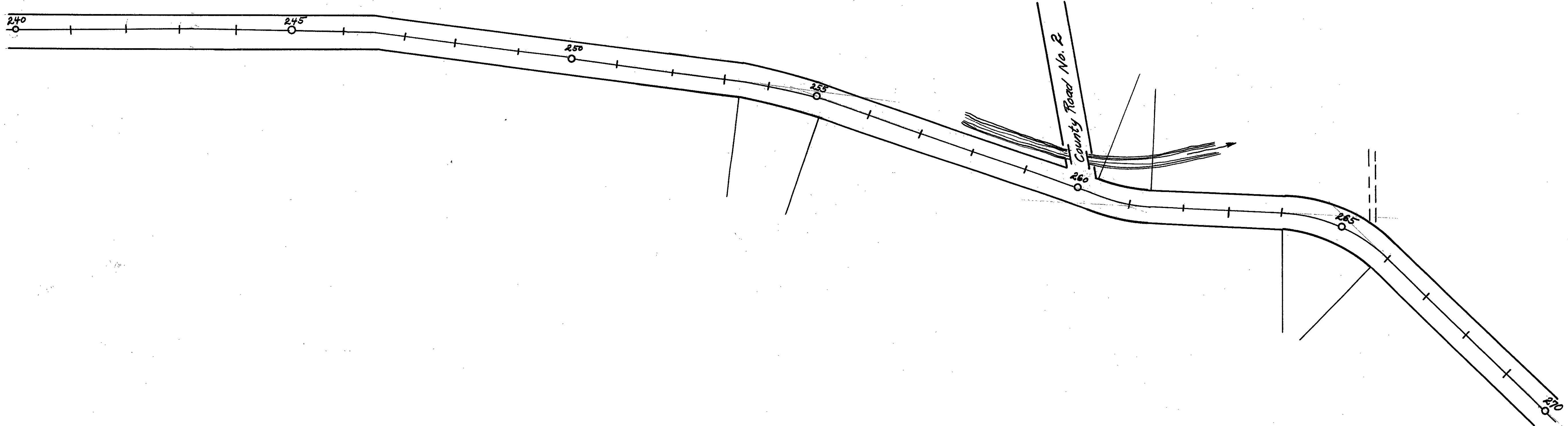


Sta. 151+52.6 To Zanesfield No  
Monuments Set. 50' Width.



L-24

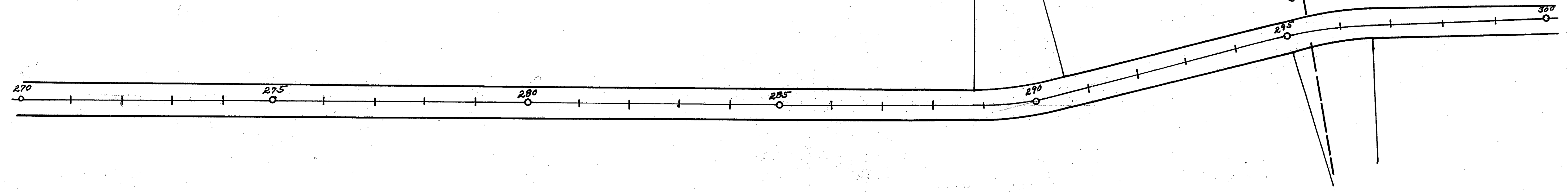




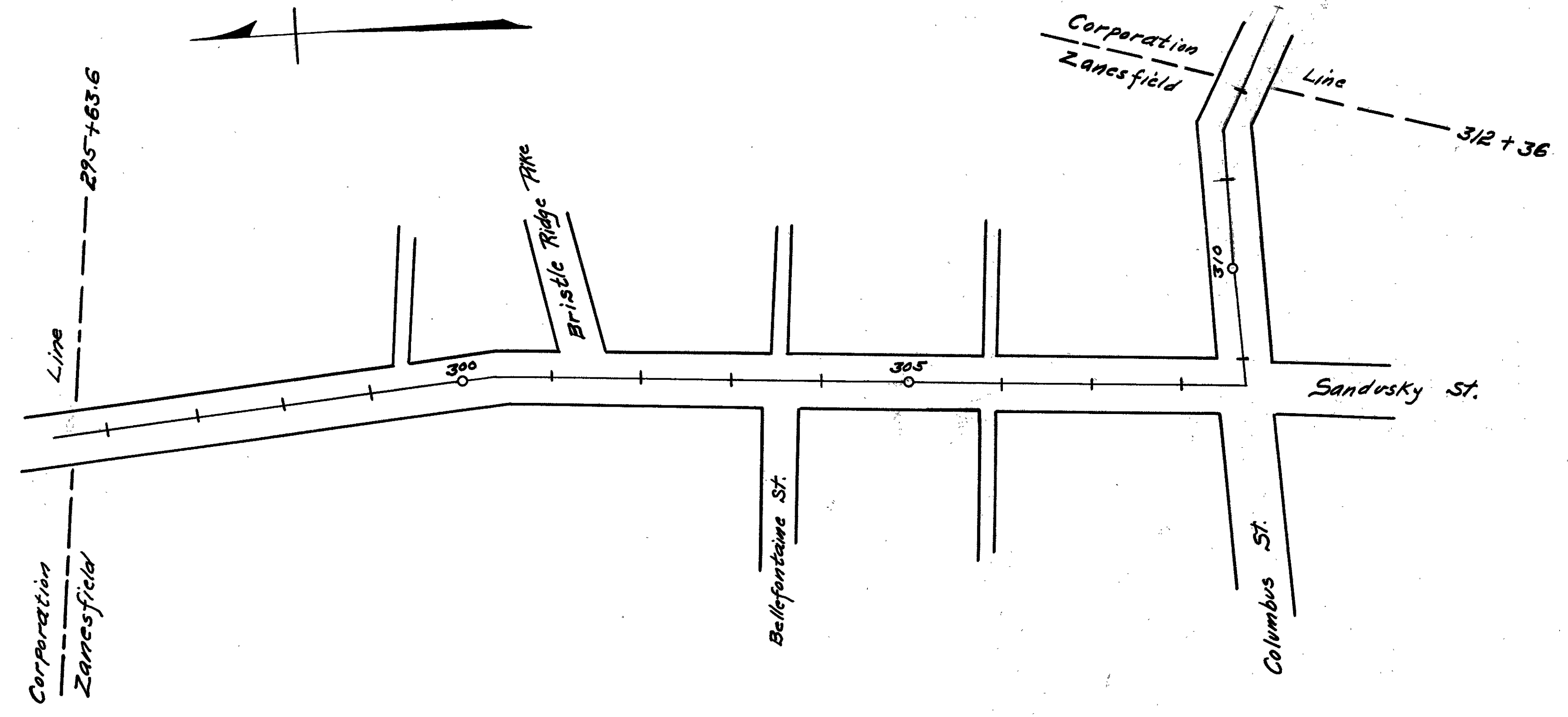
Sta. 157+52.6 To Zanesfield  
No Monuments Set. 50' Width.

Sta. 295+63.6  
End of Sec. A.  
Sec. A. 29563.6 Feet = 5.599 Miles

Corporation Line — 295+63.6  
Zanesfield Ohio

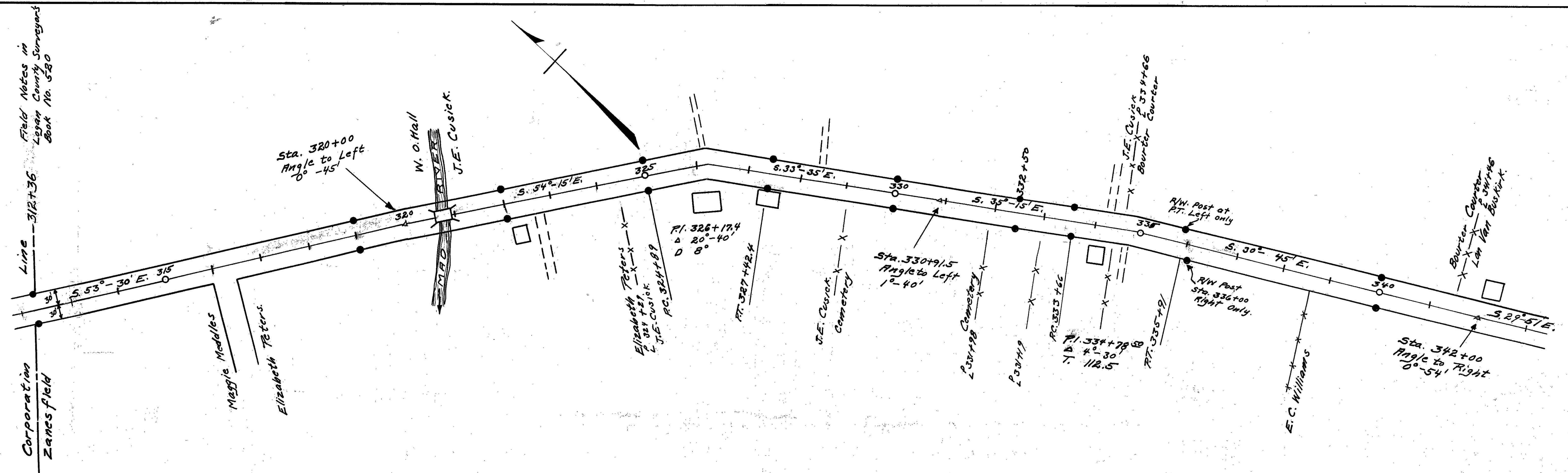


● Indicates R/W. Monuments.



Zanesfield Section  
 Sta. 295+63.6 to 312+36  
 1672.4 Feet  
 .317 Mile

No Monuments set on Zanesfield Section



Field Notes in  
 Logan County Surveys  
 Book No. 520

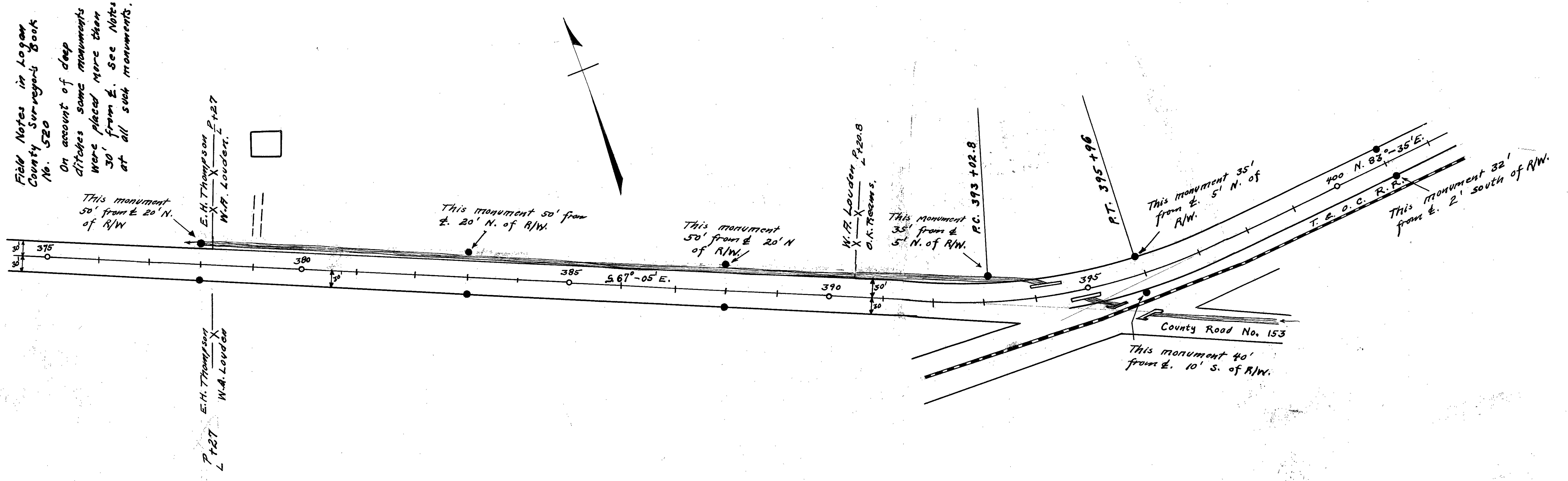
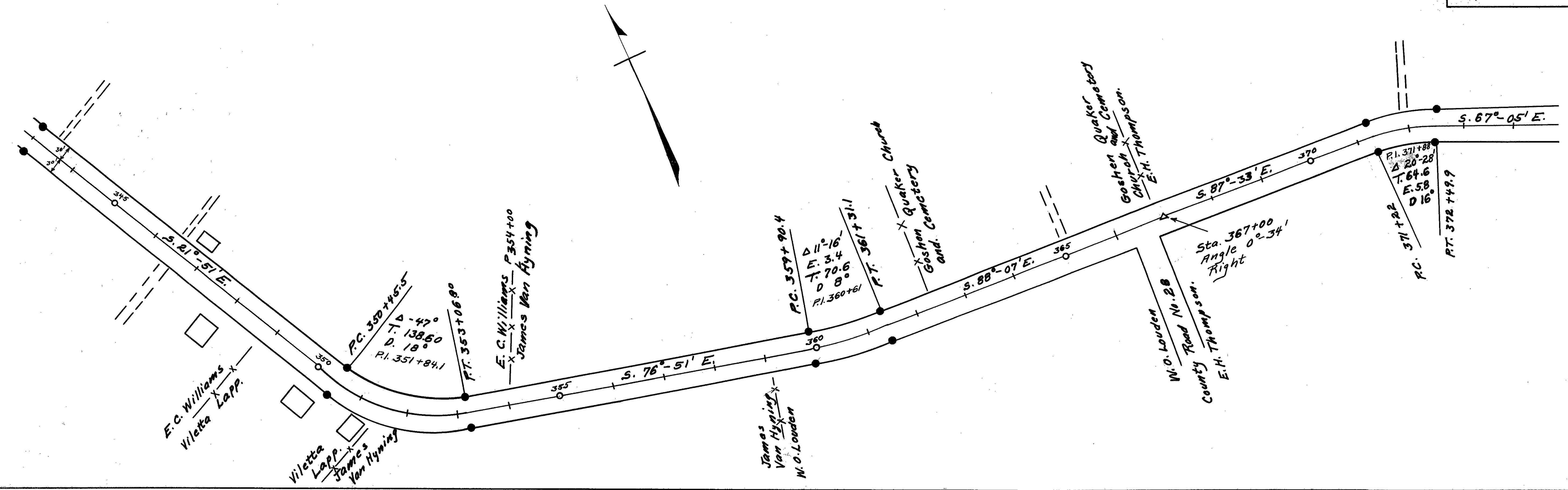
Line 312+36

Corporation  
 Zanesfield

L-24

L-24

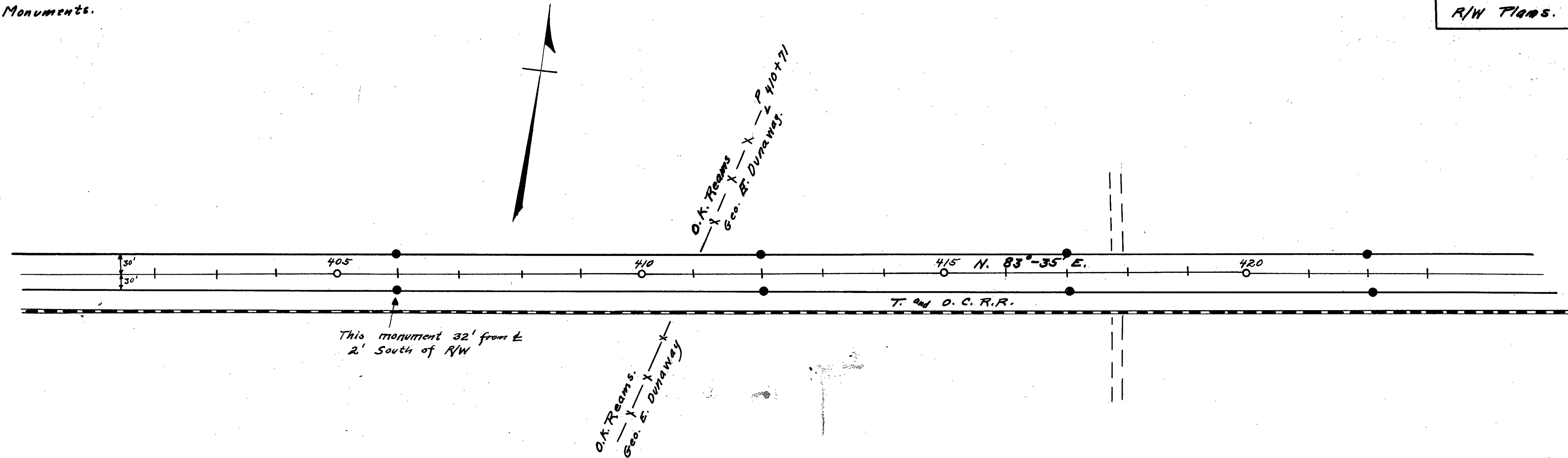
● Indicates R/W Monuments.



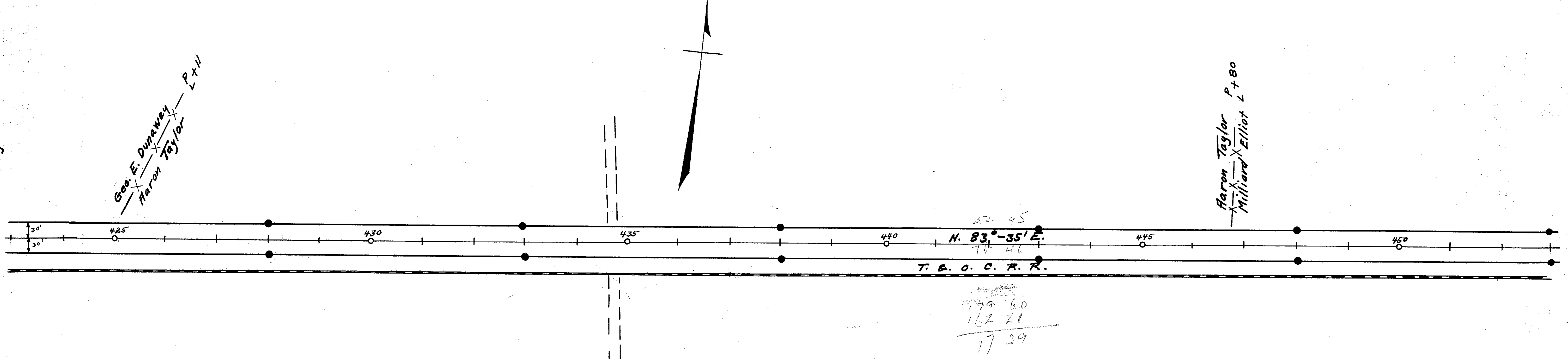
Field Notes in Logan County Surveyors Book No. 520  
On account of deep ditches some monuments were placed more than 30' from E. See Notes at all such monuments.

L-27

● Indicates R/W Monuments.



Field notes in Logan County  
Surveyors Book No. 520



L-24



U. S. 33

LOGAN COUNTY  
S.H. 235 SEC. B  
R/W PLANS

9  
15

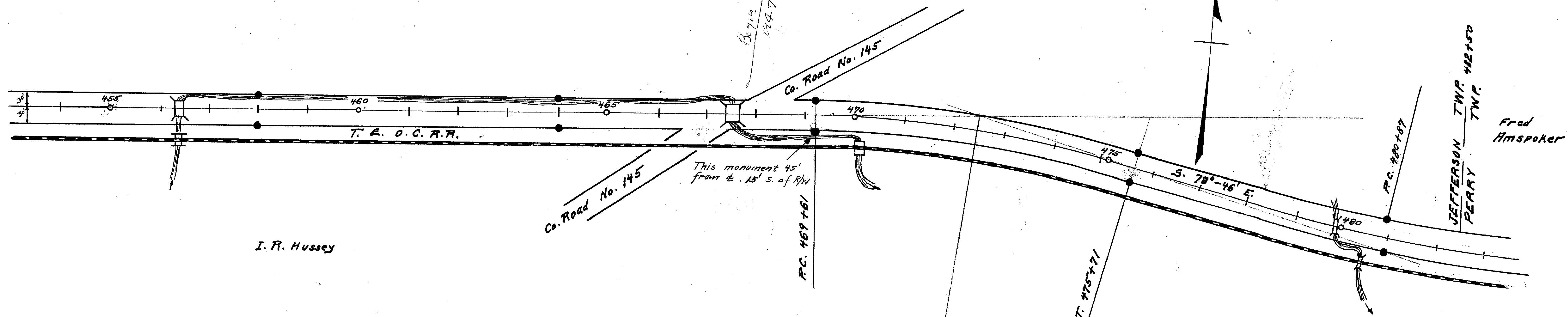
• Indicates R/W Monuments.

Millard Elliot

Field Notes in Logan County  
Surveyor's Book No. 520

I. R. Hussey

Begin New Sections  
294.7



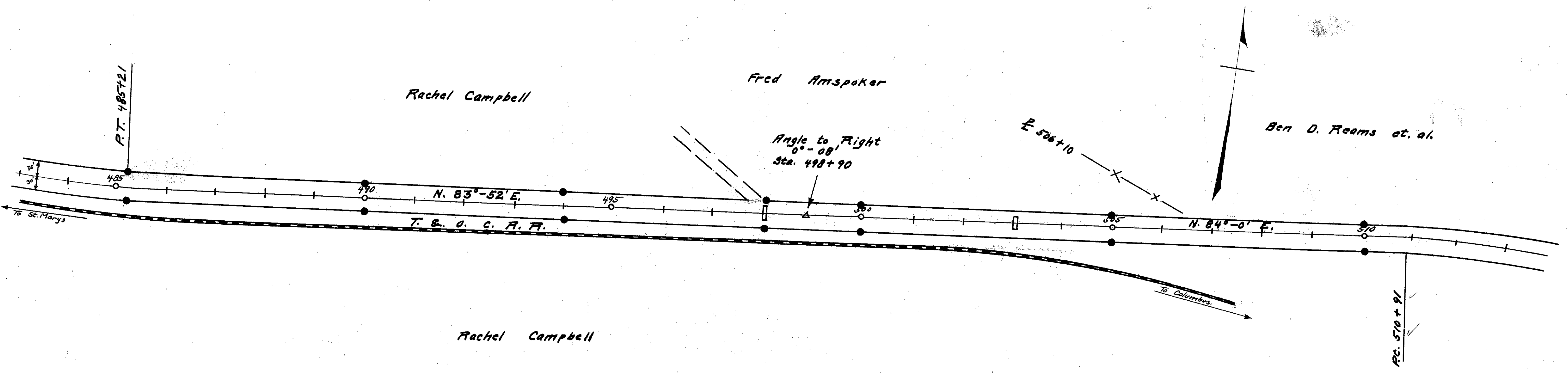
JEFFERSON TWP. 482+50  
PERRY TWP.  
Fred Amspoker

Rachel Campbell

Fred Amspoker

Ben D. Reams et. al.

Rachel Campbell



To St. Marys

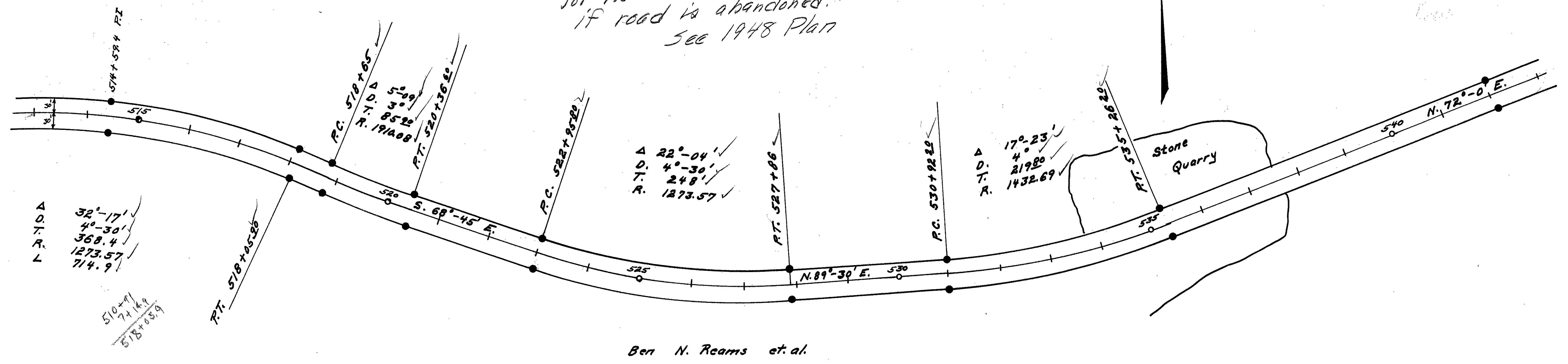
To Columbus

L-24

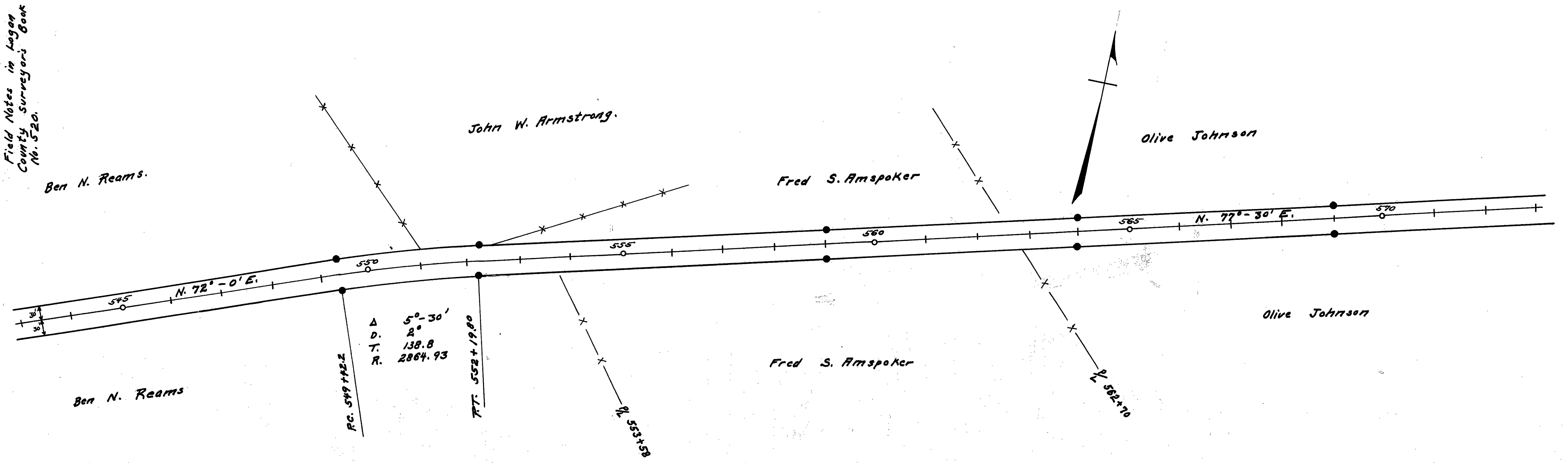
L-24

● Indicates R/W. Monuments.

Reams to Co. Com.  
Easement Vol. 128 Pg. 114 2-7-24  
for 7.80 Ac. with Reverting Clause  
if road is abandoned.  
See 1948 Plan



Field Notes in Logan  
County Surveyors' Book  
No. 520.



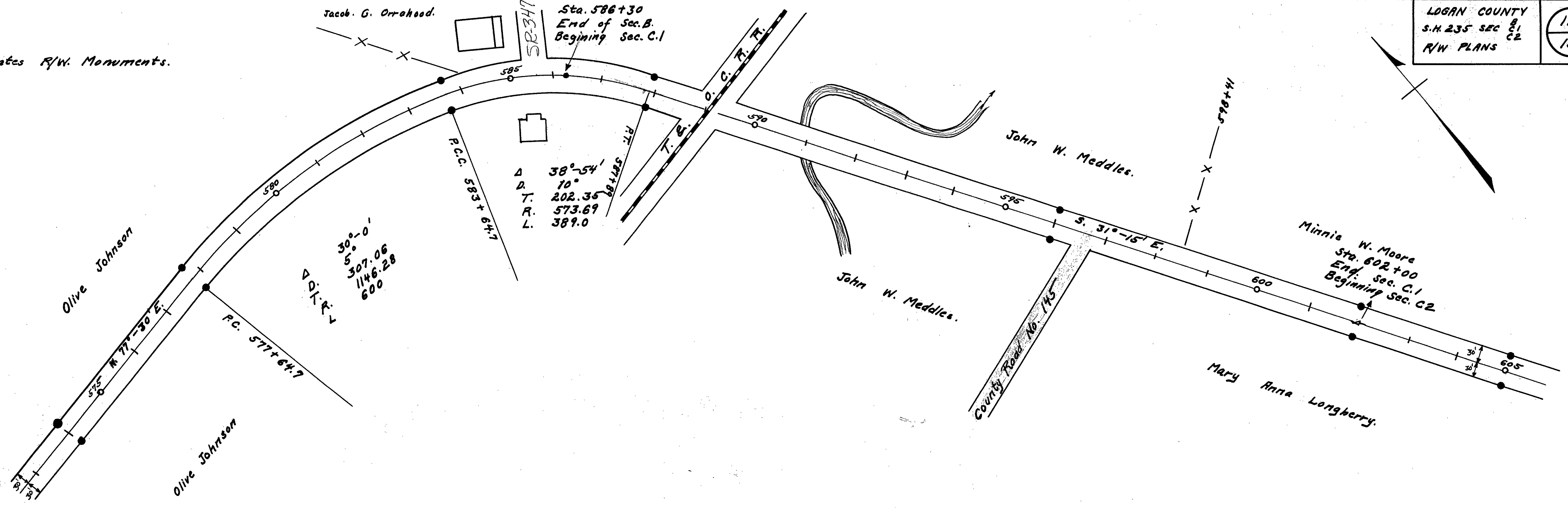
U.S. 33

LOGAN COUNTY  
S.H. 235 SEC 81  
R/W PLANS C2

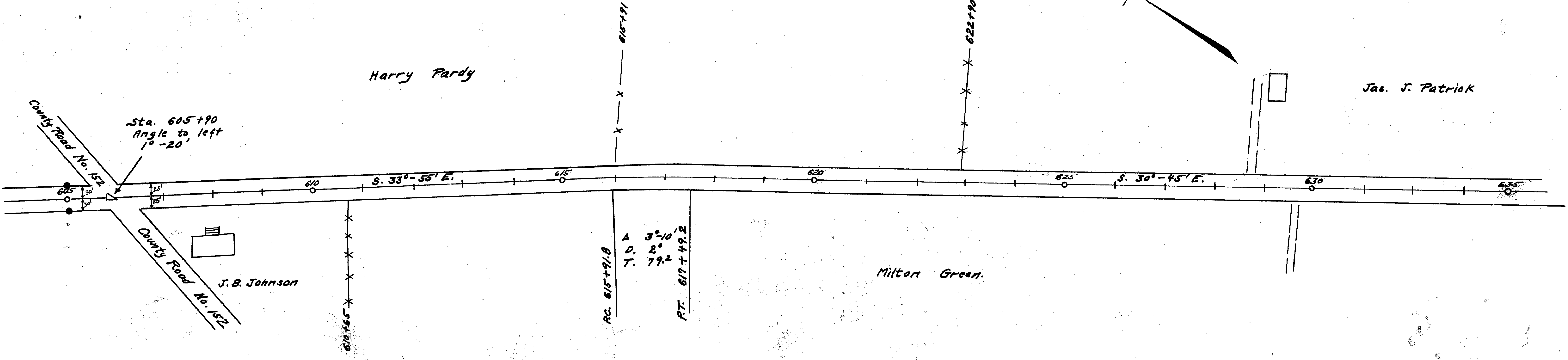
11  
15

● Indicates R/W Monuments.

Field Notes in Logan County  
Surveyor's Book 520



Sta. 605+90 to Union County Line  
no monuments set. 50' width.

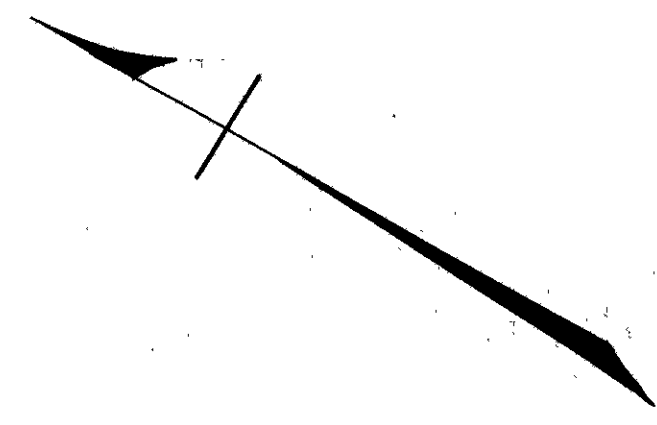


42-7

U.S. 33

LOGAN COUNTY  
S.H. 235 SEC. C2  
R/W PLANS.

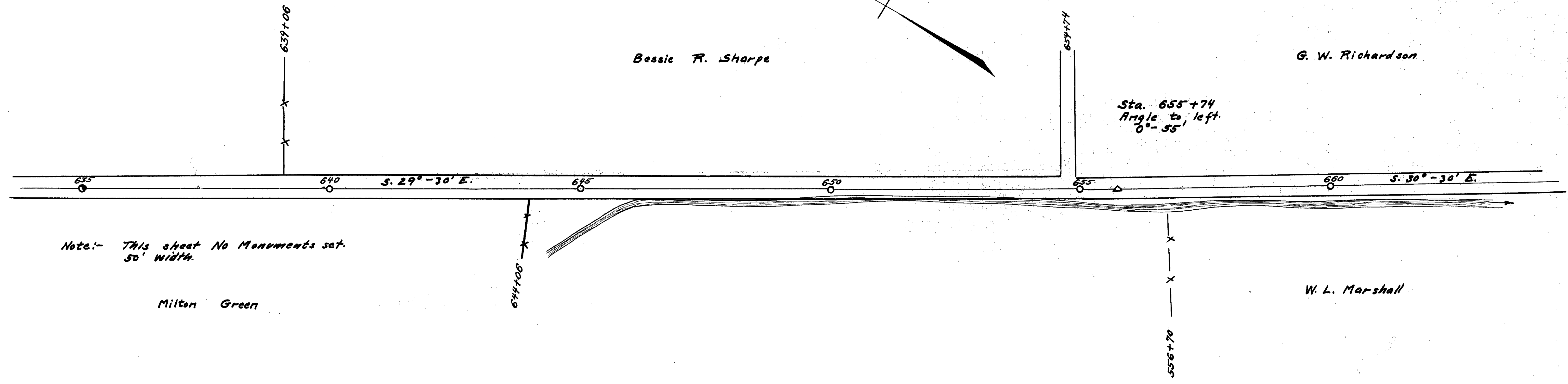
12  
15



Bessie R. Sharpe

G. W. Richardson

Sta. 655+74  
Angle to left  
0°-55'



Note:- This sheet No Monuments set.  
50' width.

Milton Green

W. L. Marshall

L-24

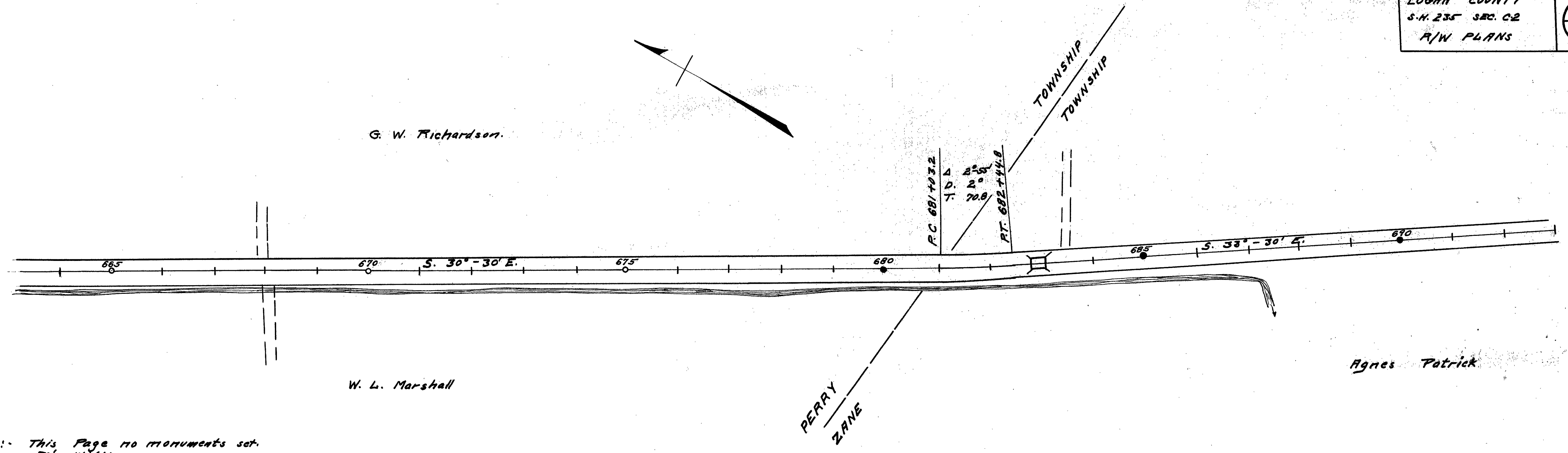
L-24



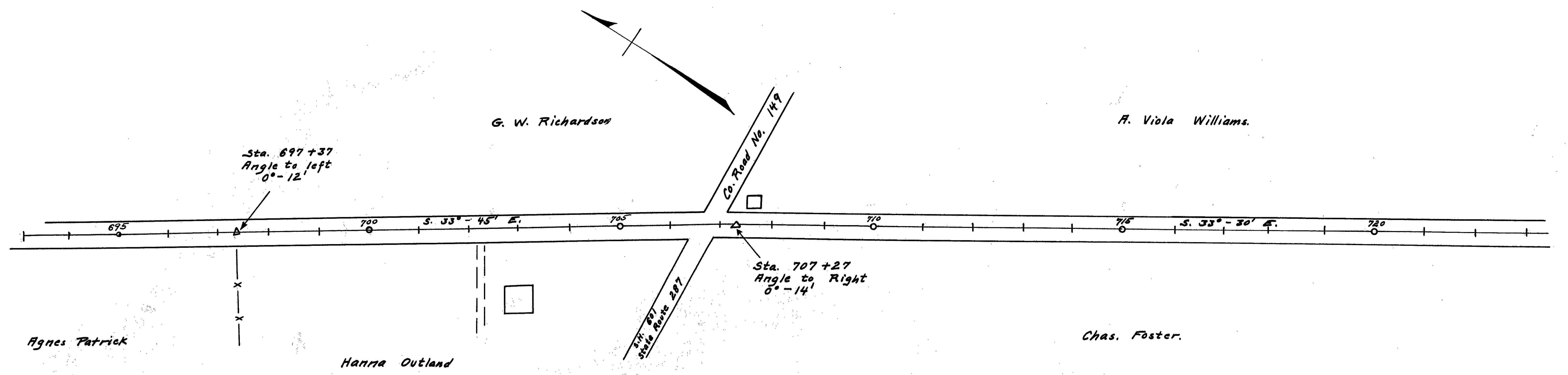
11.31.33

LOGAN COUNTY  
S.H. 235 SEC. C-2  
R/W PLANS

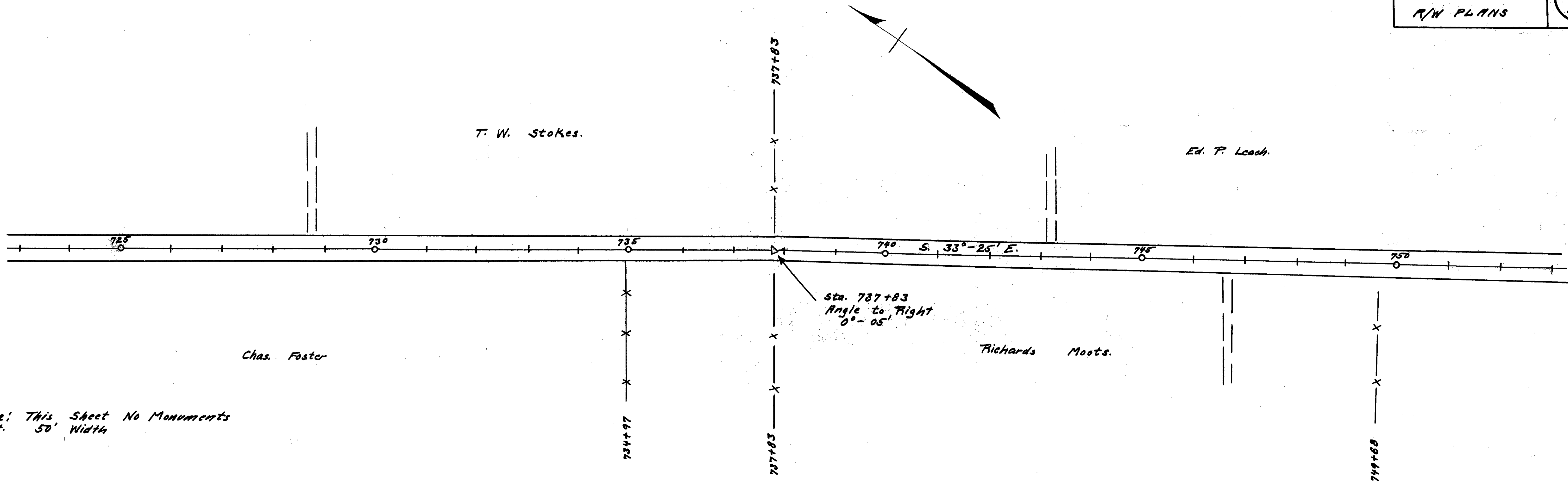
13  
15



Note:- This Page no monuments set.  
50' width.



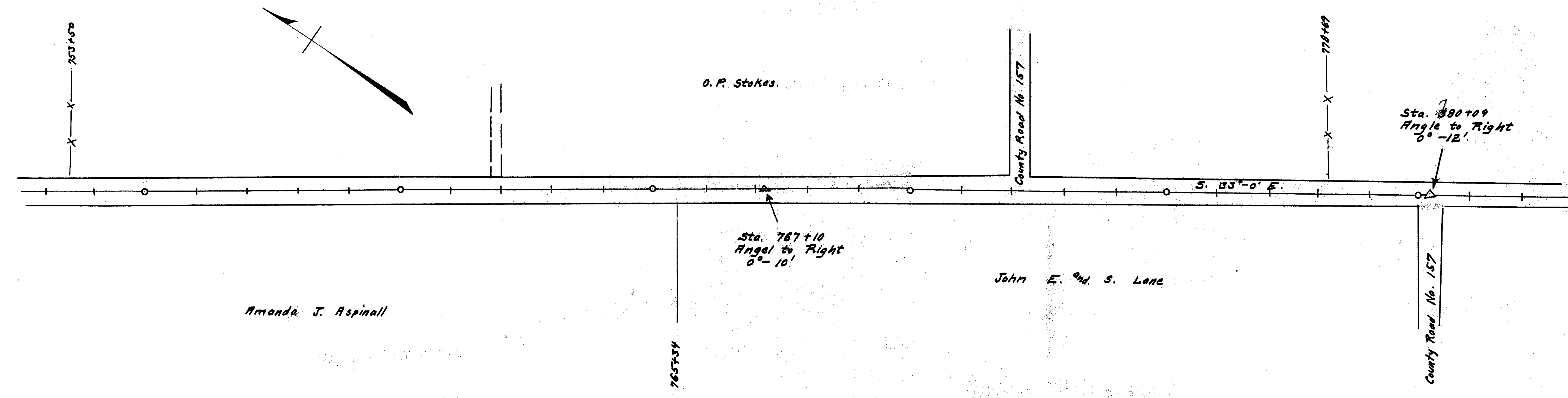
L-24



Note: This Sheet No Monuments  
 set. 50' Width

Sta. 737+83  
 Angle to Right  
 0°-05'

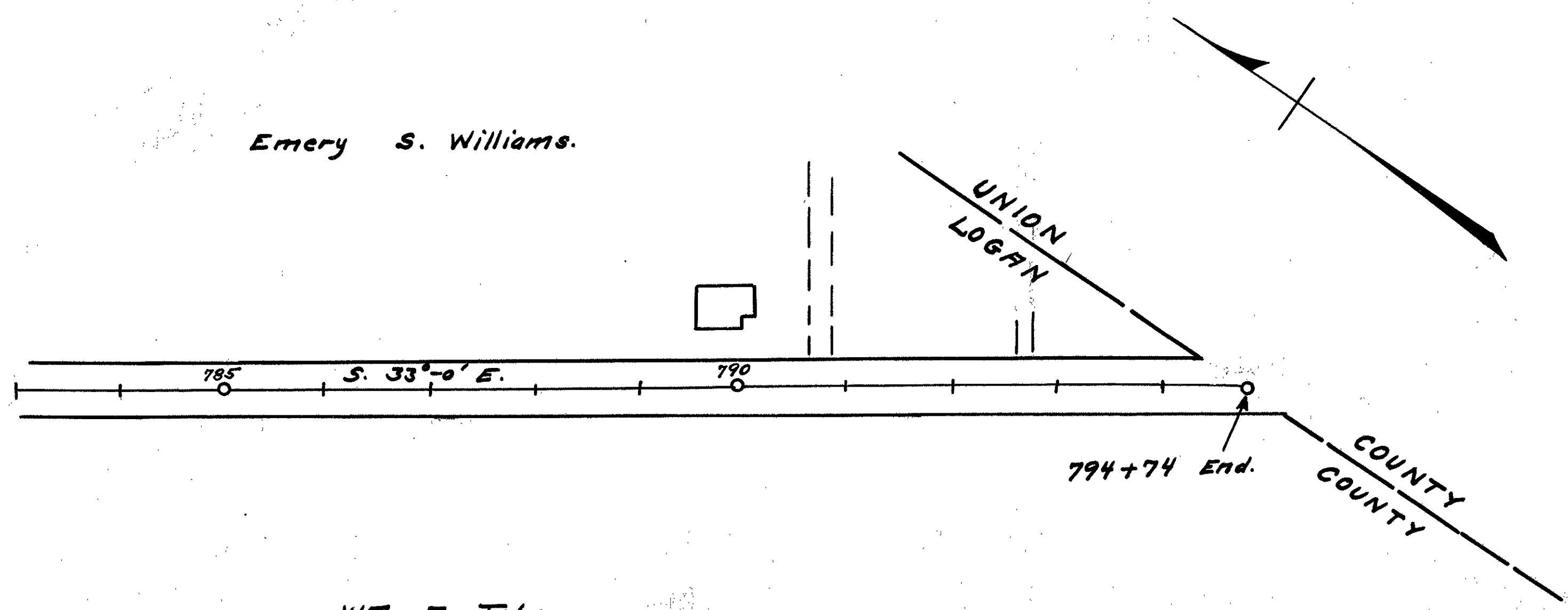
Sta. 780+09  
 Angle to Right  
 0°-12'



Sta. 767+10  
 Angle to Right  
 0°-10'

42-7

Emery S. Williams.



794+74 End.

Wm. F. Tehan.

Note: This sheet No. Monuments set.  
50' Width.

L-24