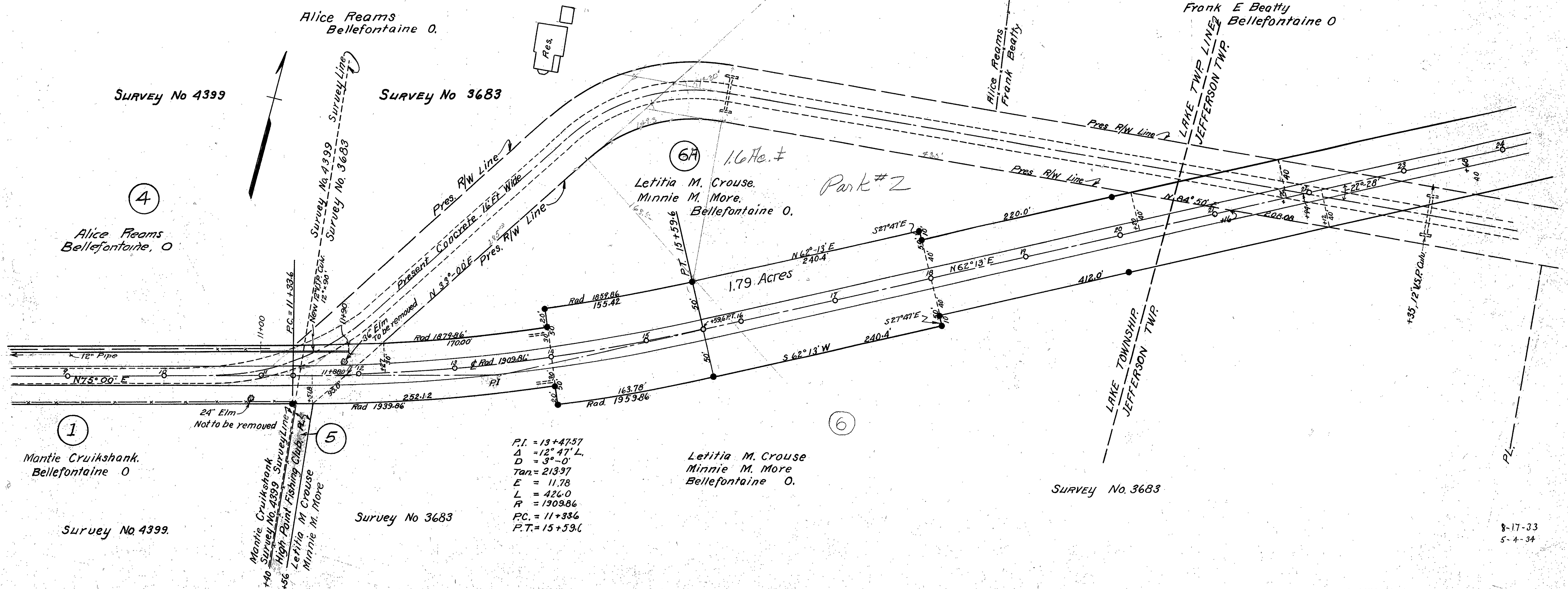
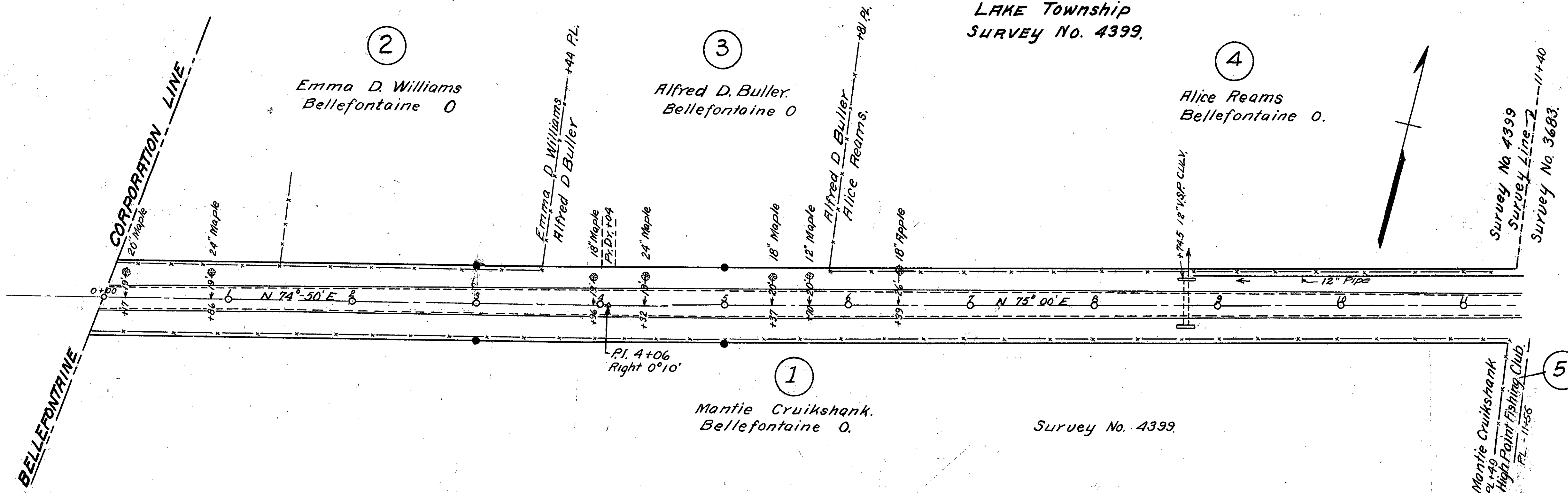


LAKE Township  
 SURVEY No. 4399.



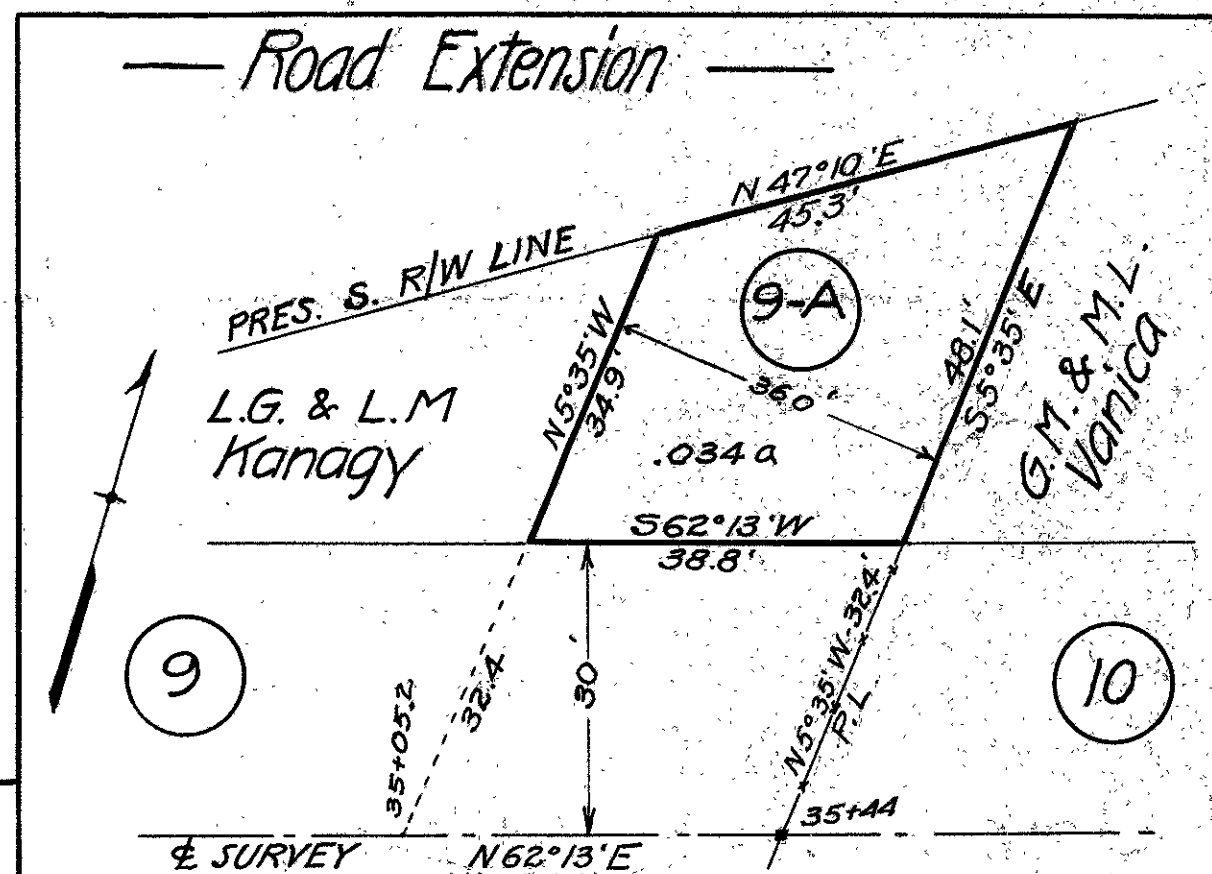
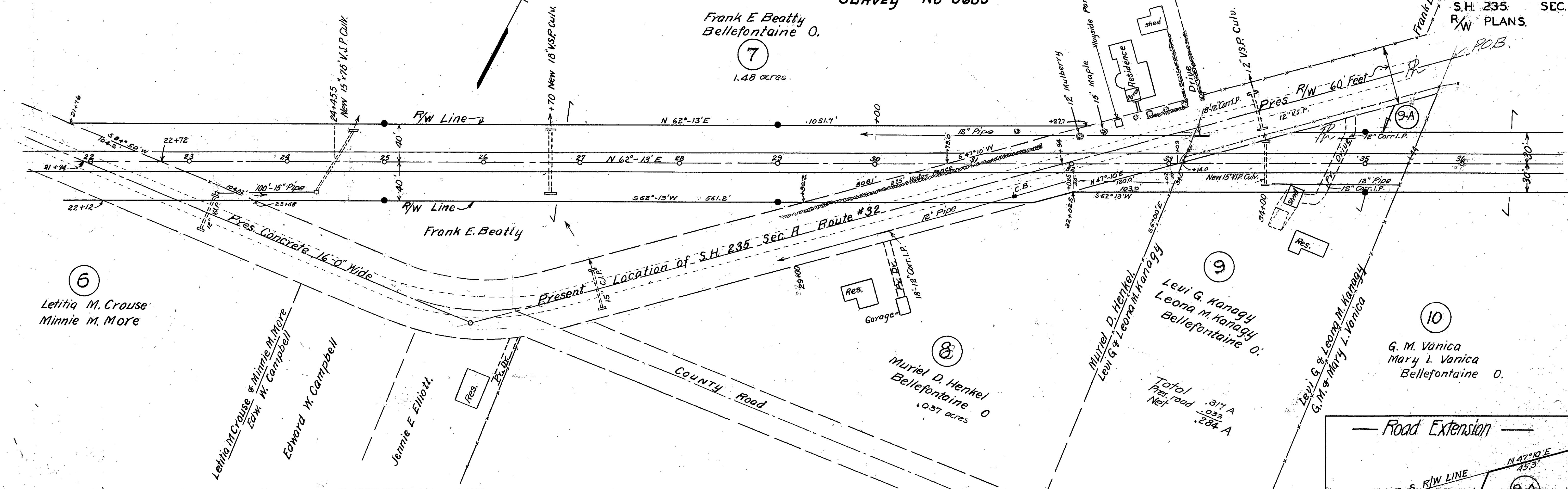
P.I. = 13+47.57  
 $\Delta = 12^\circ 47' L$   
 $D = 3^\circ - 0'$   
 $Tan = 213.97$   
 $E = 11.78$   
 $L = 426.0$   
 $R = 1309.86$   
 $P.C. = 11+33.6$   
 $P.T. = 15+59.6$

FED. RD. DIST. NO.	STATE	FED. AID PROJECT	FISCAL YEAR
10	OHIO		1932

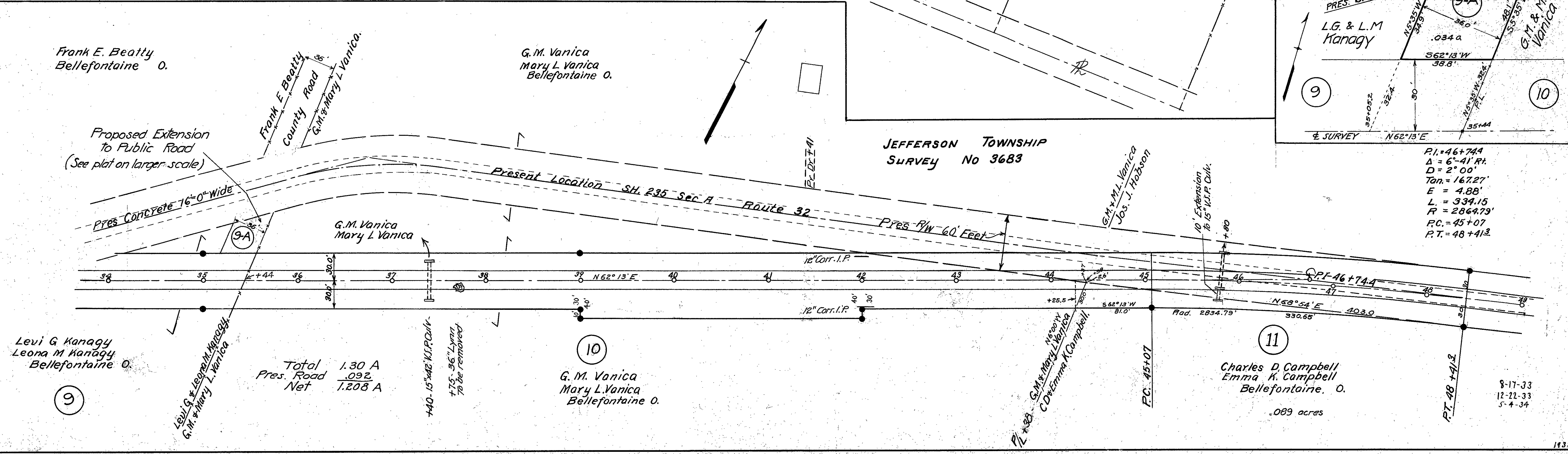
2  
3

JEFFERSON TOWNSHIP  
SURVEY No 3683

LOGAN COUNTY  
S.H. 235. SEC. A.  
R/W PLANS.



$P.I. = 46+74.4$   
 $\Delta = 6'-41'' R.$   
 $D = 2^\circ 00'$   
 $Tan. = 167.27'$   
 $E = 4.88'$   
 $L = 334.15'$   
 $R = 2869.79'$   
 $P.C. = 45+07$   
 $P.T. = 48+41.3$



Total 1.30 A  
 Pres. Road .092 A  
 Net 1.208 A

Charles D. Campbell  
 Emma K. Campbell  
 Bellefontaine, O.  
 .089 acres

8-17-33  
12-22-33  
5-4-34



