

LOCATION PLAN

LOGAN COUNTY
S.R. 366 - INDIAN LAKE - NORTHWEST ROAD
STOKES TOWNSHIP

SCALE 1" = 50'

FED. RD. DIVISION	STATE	PROJECT
2	OHIO	

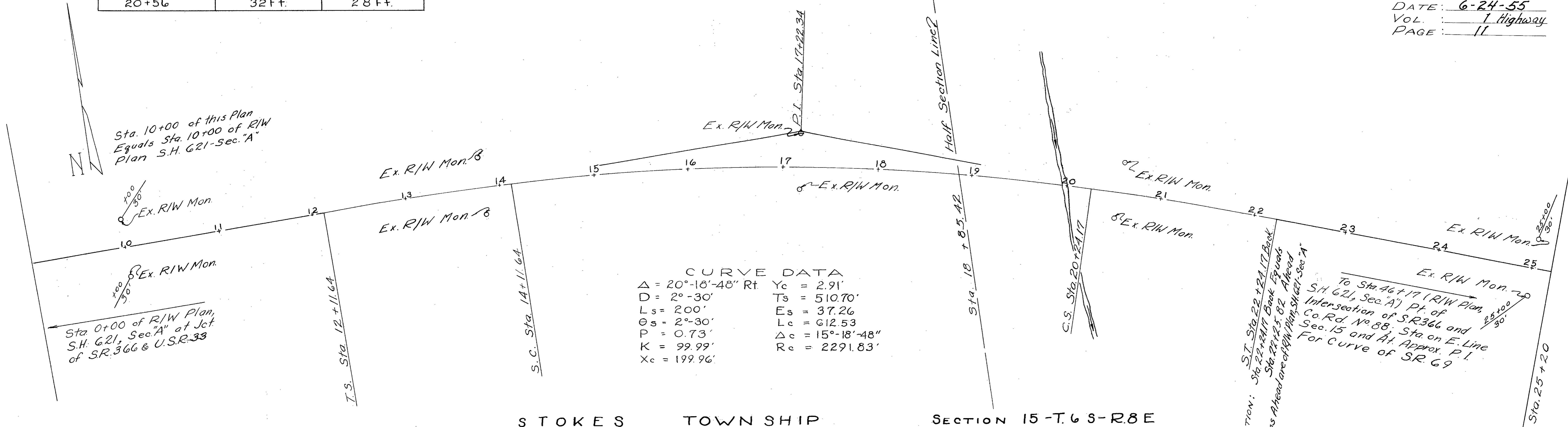
LOGAN COUNTY
LOG. 366 (0.21)
1955

STATION	EXISTING R/W MONUMENTS TO BE REMOVED	
	DISTANCE FROM ϵ LEFT	DISTANCE FROM ϵ RIGHT
13+61	32 Ft.	28 Ft.
17+22	36 Ft.	24 Ft.
20+56	32 Ft.	28 Ft.

STOKES TOWNSHIP SECTION 15 - T.6 S - R.8 E

RECORDED
DATE: 6-24-55
VOL. 7 Highway
PAGE 11

CURVE DATA
 $\Delta = 20^{\circ}-18'-48''$ Rt $Y_c = 2.91'$
 $D = 2^{\circ}-30'$ $T_s = 510.70'$
 $L_s = 200'$ $E_s = 37.26'$
 $\theta_s = 2^{\circ}-30'$ $L_c = 612.53'$
 $P = 0.73'$ $\Delta_c = 15^{\circ}-18'-48''$
 $K = 99.99'$ $R_c = 2291.83'$
 $X_c = 199.96'$



STOKES TOWNSHIP SECTION 15 - T.6 S - R.8 E

Sta. 10+00 of this Plan Equals Sta. 10+00 of R/W Plan S.H. 621 - Sec. "A"

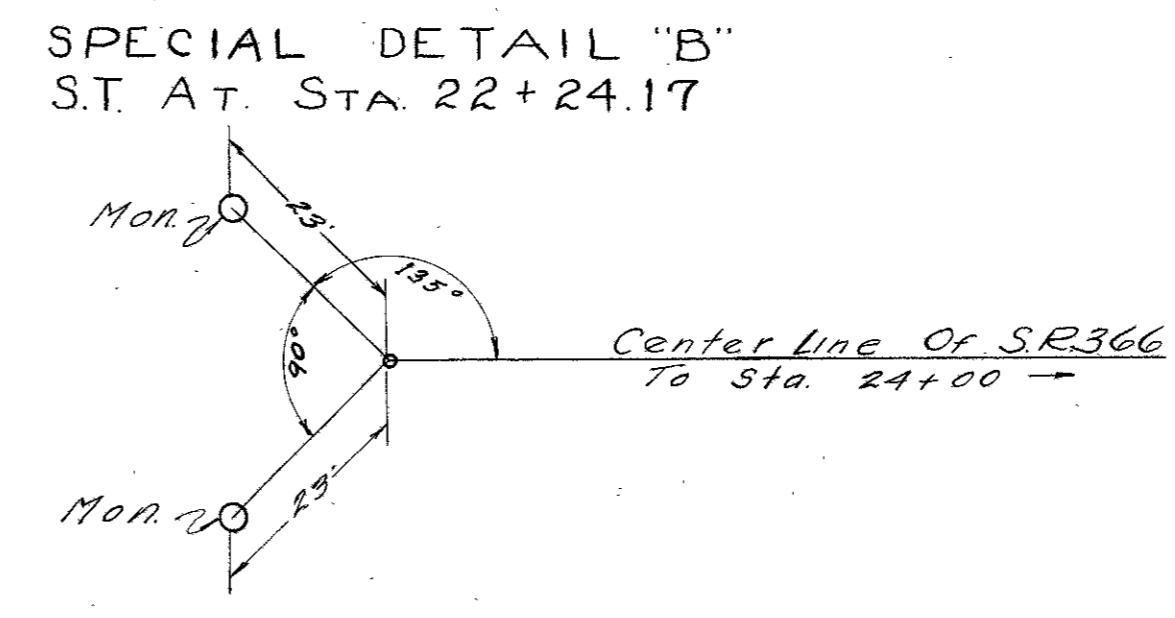
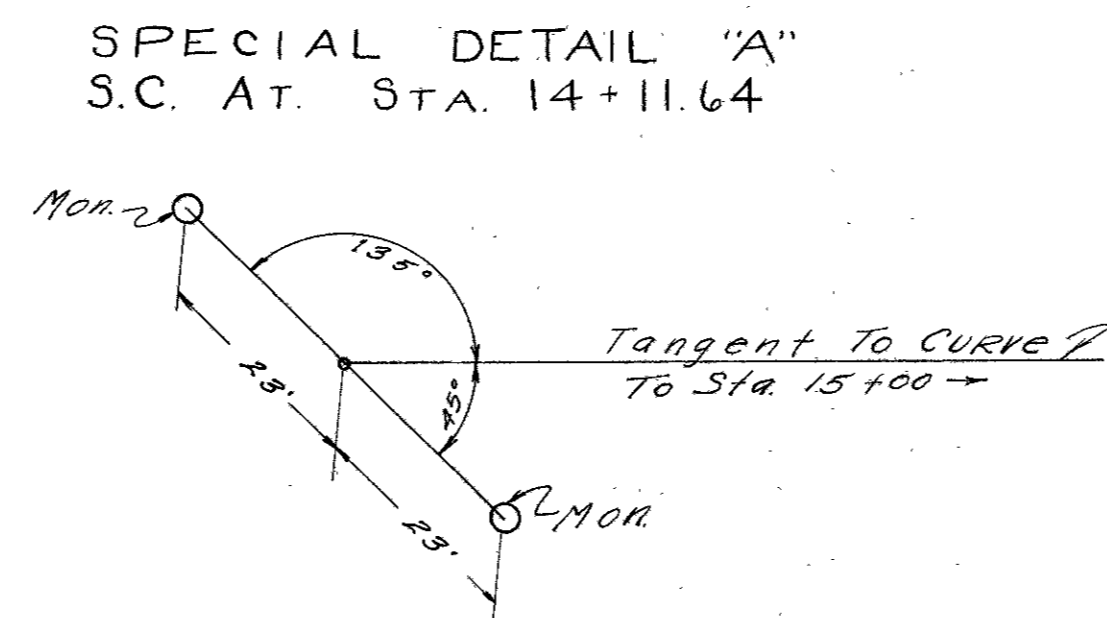
Sta. 0+00 of R/W Plan, S.H. 621, Sec. "A" at Jct. of S.R. 366 & U.S.R. 33

Equation: $S.T. Sta. 22 + 24.17$ Bank Stations Ahead are of R/W Plan, S.H. 621 - Sec. "A"

To Sta. 46+17 (R/W Plan, S.H. 621, Sec. "A") Pt. of Intersection of S.R. 366 and Co. Rd. No. 88; Sta. on E. Line Sec. 15 and At. Approx. P.I. For Curve of S.R. 69

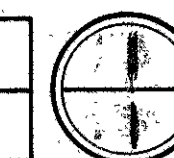
STATION	REFERENCE POINTS TO BE SET AFTER CONSTRUCTION	
	DISTANCE FROM ϵ LEFT	DISTANCE FROM ϵ RIGHT
12+11.64 (T.S.)	16 Ft.	16 Ft.
14+11.64 (S.C.)	See Special Detail "A"	
17+22.34 (P.I.)	37.26 Ft. (On P.I.)	
20+24.17 (C.S.)	15 Ft.	15 Ft.
22+24.17 (S.T.)	See Special Detail "B"	

Monuments set 12-21-56 By Theodore Craig



APPROVED BY Joe M. Bowen
DATE 14 June 1955
RIGHT OF WAY ENGINEER FOR DIV. NO. 7
REGISTERED SURVEYOR NO. 3128

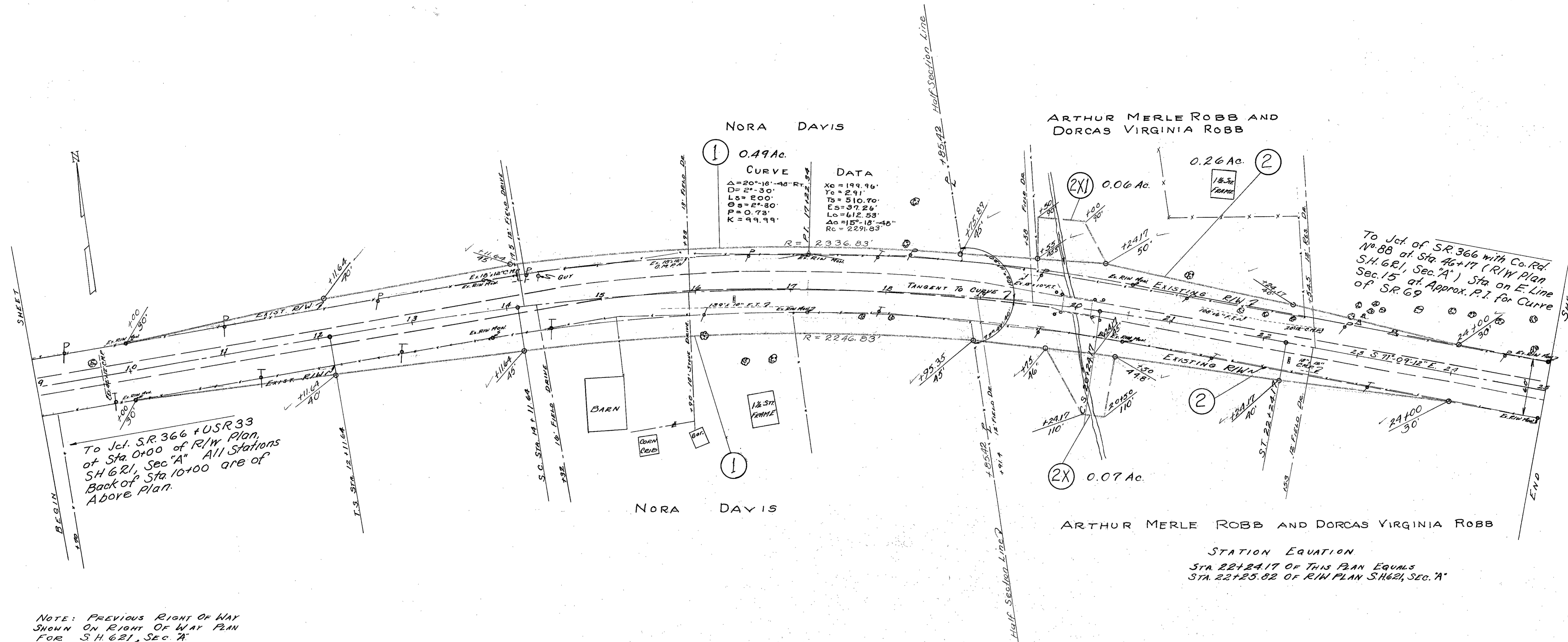
FED. RD. DIVISION	STATE	PROJECT
2	OHIO	



R/W PLAN
LOG. 366~0.21
LOGAN COUNTY
1955

STOKES TOWNSHIP

SECTION 15 - T6S - R4E



NOTE: PREVIOUS RIGHT OF WAY SHOWN ON RIGHT OF WAY PLAN FOR S.H. 621, SEC. "A"

STOKES TOWNSHIP

SECTION 15 - T6S - R4E