

# STATE OF OHIO DEPARTMENT OF HIGHWAYS LOG-368-3.28

FED. RD. DIVISION	STATE	PROJECT
2	OHIO	STATE

LOGAN COUNTY  
LOG-368-3.28

CONVENTIONAL SIGNS

- COUNTY LINE
- TOWNSHIP LINE
- SECTION LINE
- CORPORATION LINE
- PROPERTY LINE
- FENCE LINE
- CENTER LINE
- POLE LINE
- RAILROAD
- HEDGE
- DRAIN PIPE (NEW)
- DRAIN PIPE (OLD)
- GUARD RAIL (NEW)
- GUARD RAIL (OLD)
- TREES & STUMPS TO BE REMOVED
- R/W LINE (PROPOSED)

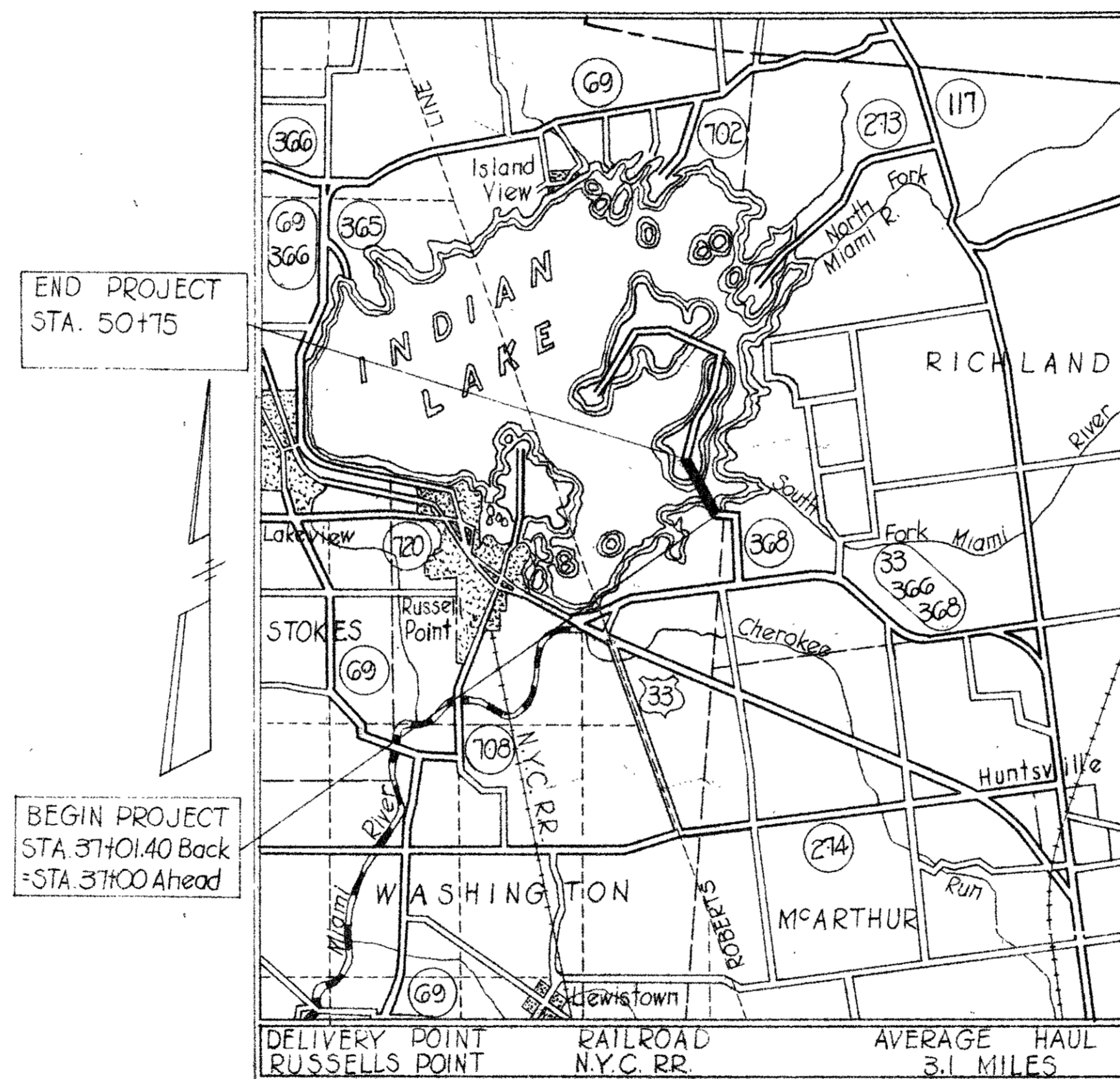
INDEX OF SHEETS

TITLE SHEET	1
TYPICAL SECTIONS	2
GENERAL NOTES	3
SPECIAL DETAILS	4
SUPERELEVATION TABLE	4
TABLES	4-5
CALCULATIONS	6
GENERAL SUMMARY	7
GENERAL SUMMARY (1965 SPECIFICATIONS) 7-a	
PLAN & PROFILE	8-10
CROSS SECTIONS	11-17
ROAD APPROACHES	18-19
STRUCTURES OVER 20 FT. SPAN	20-22
RIGHT OF WAY	23

LINE DATA

BEGIN WORK	STA. 36+00
BEGIN PROJECT (EQUATION)	STA. 37+01.40 Back = STA. 37+00 Ahead
END PROJECT	STA. 50+75
END WORK	STA. 51+75
NO ADDITIONS OR DEDUCTIONS	
NET LENGTH OF PROJECT	1375 LIN. FT. or 0.260 Miles
NET LENGTH OF WORK	1576.4 LIN. FT. or 0.298 Miles

## WASHINGTON TOWNSHIP LOGAN COUNTY



LOCATION MAP

SCALE OF MILES

PORTION TO BE IMPROVED  
STATE HIGHWAYS

SCALES

PLAN

PROFILE HORIZONTAL

PROFILE VERTICAL

CROSS SECTIONS

1965 SPECIFICATIONS

THE STANDARD SPECIFICATIONS OF THE STATE OF OHIO DEPARTMENT OF HIGHWAYS, INCLUDING CHANGES AND SUPPLEMENTAL SPECIFICATIONS LISTED IN THE PROPOSAL SHALL GOVERN THIS IMPROVEMENT.

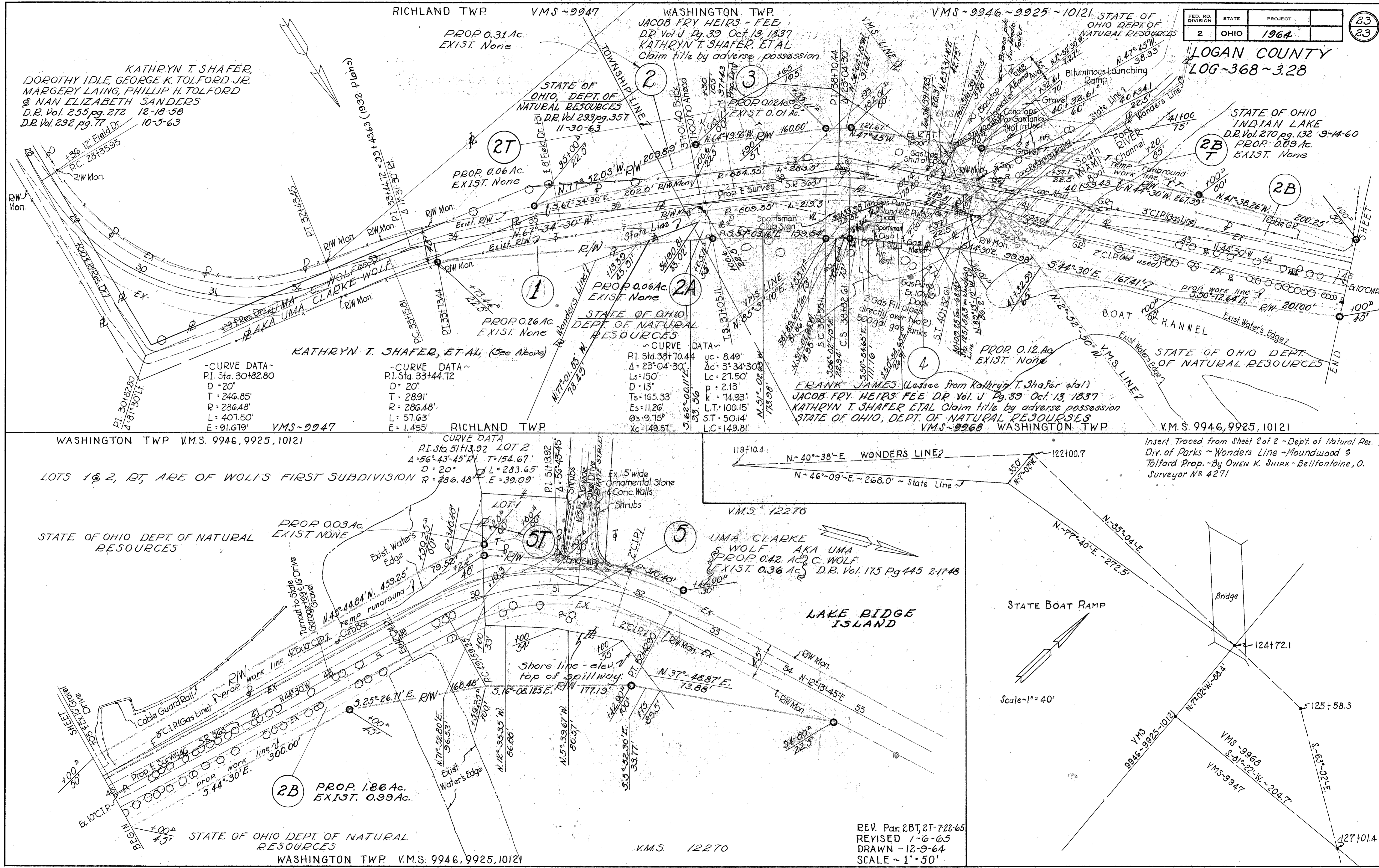
THE RIGHT OF WAY NECESSARY FOR THIS IMPROVEMENT WILL BE PROVIDED BY THE STATE OF OHIO.

I HEREBY APPROVE THESE PLANS AND DECLARE THAT THE MAKING OF THIS IMPROVEMENT WILL NOT REQUIRE THE CLOSING TO TRAFFIC OF THE HIGHWAY AND THAT PROVISIONS FOR THE MAINTENANCE AND SAFETY OF TRAFFIC WILL BE AS SET FORTH ON THE PLANS AND ESTIMATES.

- |               |          |   |
|---------------|----------|---|
| APPROVED DATE | 7-15-65  | DIVISION DEPUTY DIRECTOR                    |
| APPROVED DATE | 11-17-64 | ENGINEER OF BRIDGES                         |
| APPROVED DATE | 11-24-64 | ENGINEER OF LOCATION AND DESIGN             |
| APPROVED DATE | 11-24-64 | DEPUTY DIRECTOR OF DESIGN AND CONSTRUCTION  |
| APPROVED DATE | 11-3-64  | DEPUTY DIRECTOR OF RIGHT OF WAY             |
| APPROVED DATE | 11-30-64 | DEPUTY DIRECTOR OF PLANNING AND PROGRAMMING |
| APPROVED DATE |          | FIRST ASSISTANT DIRECTOR                    |
| APPROVED DATE | 11/29/64 | DIRECTOR OF HIGHWAYS                        |

STANDARD		DRAWINGS	
Nº	Date	Nº	Date
BP-6	6-1-65		
NC-3	6-1-65		
HW-E	6-1-65		
MC-4	6-1-65		
GR-1	6-1-65		
GR-2A	6-1-65		
L-4	6-1-65		
MC-1	6-1-65		
BP-5	6-1-65		
AS-1-54	7-5-62		
CS-1-54 (2 sheets)	7-16-56		
A-1-54	12-1-54		
P-1-54	2-2-59		
BP-3	6-1-65		

FILE NUMBER	LOGAN COUNTY - LOG-368-3.28	SUPPLEMENTAL SPECIFICATIONS	
	DATE OF LETTING CONTRACT Nº	Nº	Date
		5-101	7-12-62



FED. RD. DIVISION	STATE	PROJECT	23 23
2	OHIO	1964	

**LOGAN COUNTY**  
LOG-368-3.28

STATE OF OHIO  
INDIAN LAKE  
D.R. Vol. 270, pg. 132, 9-14-60  
PROP. 0.09 Ac.  
EXIST. None

STATE OF OHIO DEPT. OF NATURAL RESOURCES

Insert Traced from Sheet 2 of 2 - Dept. of Natural Res.  
Div. of Parks - Wonders Line - Moundwood &  
Tolford Prop. - By OWEN K. SHIRK - Bellfontaine, O.  
Surveyor No. 4271

-CURVE DATA-  
PI. Sta. 30+82.80  
D = 20°  
T = 246.85'  
R = 286.48'  
L = 407.50'  
E = 91.679'

-CURVE DATA-  
PI. Sta. 33+44.72  
D = 20°  
T = 289.1'  
R = 286.48'  
L = 57.63'  
E = 1.455'

~CURVE DATA~  
PI. Sta. 38+70.44  
Δ = 23°04'30"  
Ls = 150'  
D = 13°  
Ts = 165.33'  
Es = 11.26'  
Θs = 9.75°  
Xc = 149.51'

yc = 8.49'  
Δc = 3°34'30"  
Lc = 271.50'  
k = 74.93'  
L.T. = 100.15'  
S.T. = 50.14'  
LC = 149.81'

REV. Pac 2BT, 2T-722-65  
REVISED 1-6-65  
DRAWN - 12-9-64  
SCALE ~ 1" = 50'

R/W PLAN STA. 28+00 TO STA. 55+00 ~ SHEET 1 OF 1