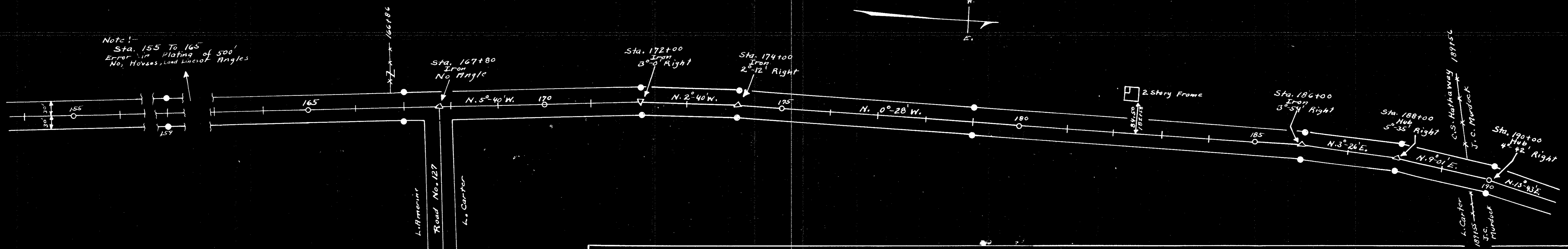
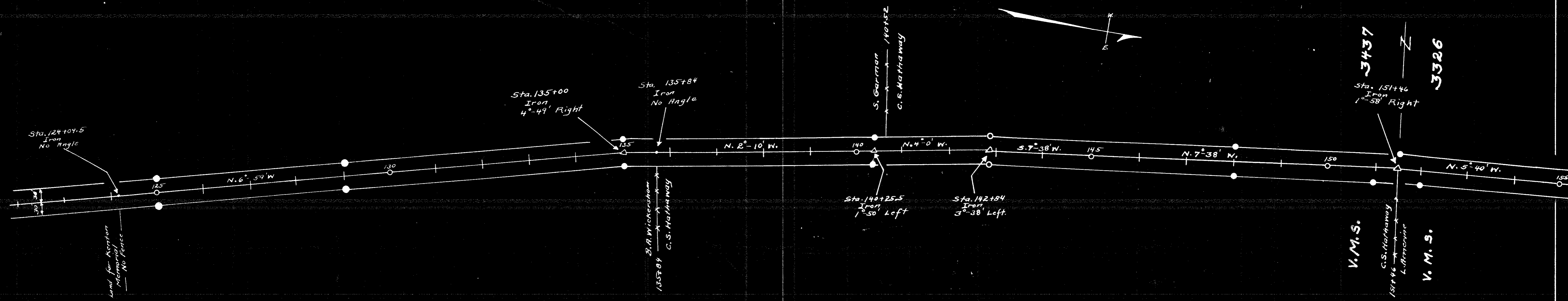
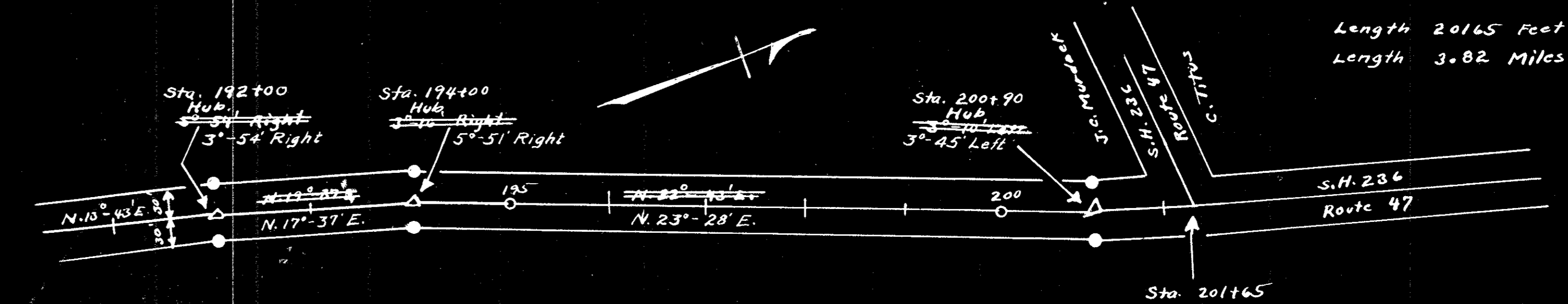


Concrete R/W Posts set as shown
Field notes Book 579



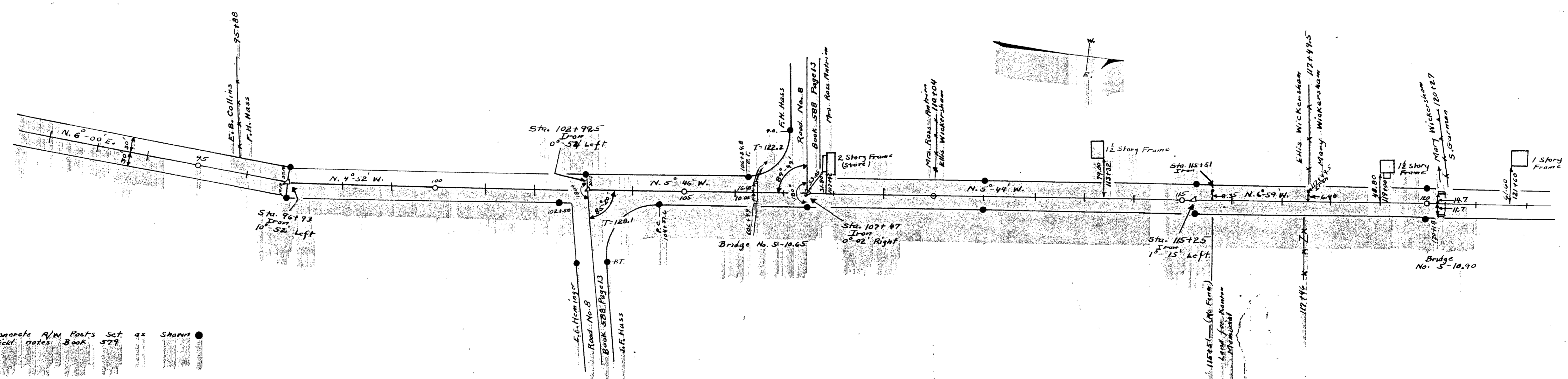
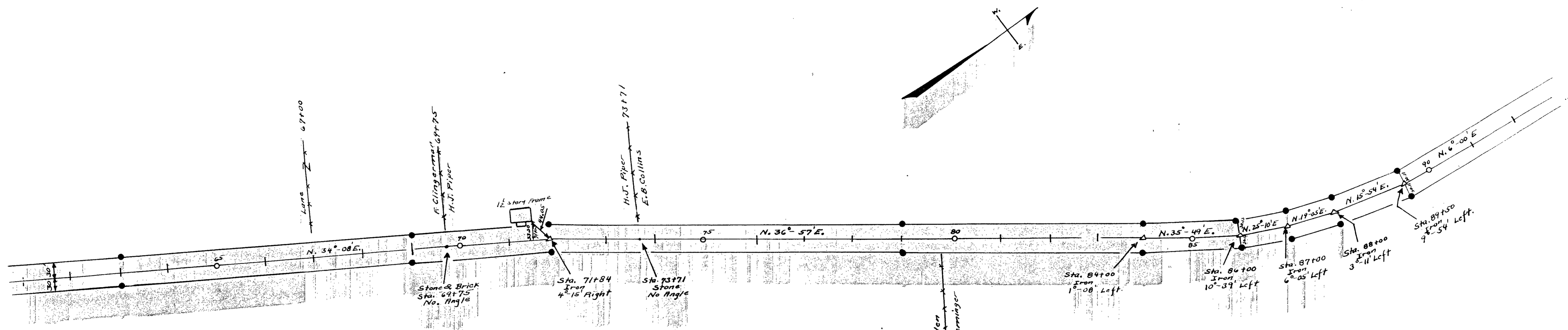
Note:
Sta. 155 To 165
Error in Plating of 500'
No. Hubs, Lead Lines or Angles

Concrete R/W Posts set as shown
Field notes Logan County Surveyor's
Book No. 579



Length 2065 Feet
Length 3.82 Miles

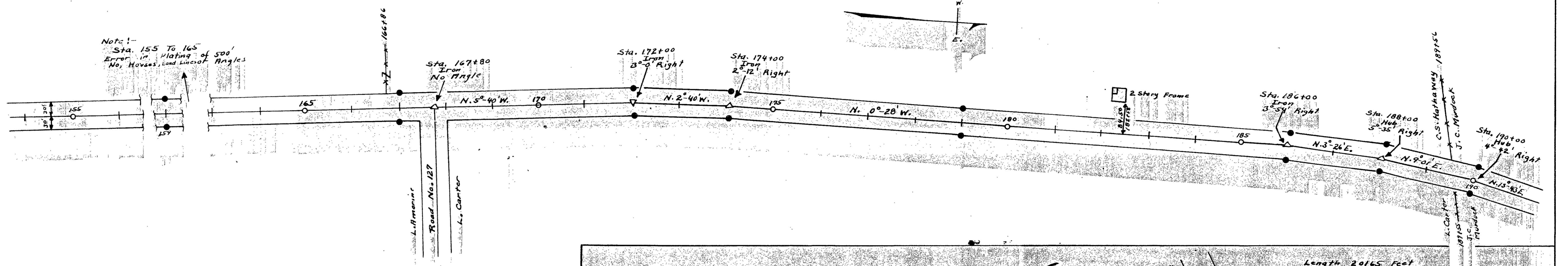
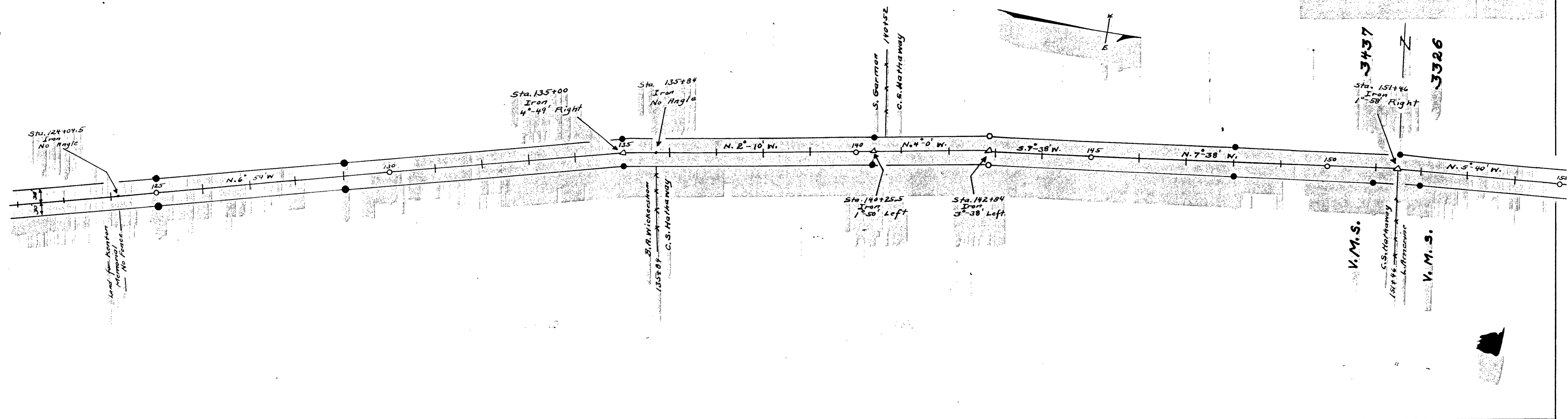
Surveyed by F.F. Wright 1934
Drawn by F.F. Wright 1936



Concrete R/W Posts Set as Shown
Field notes Book 579

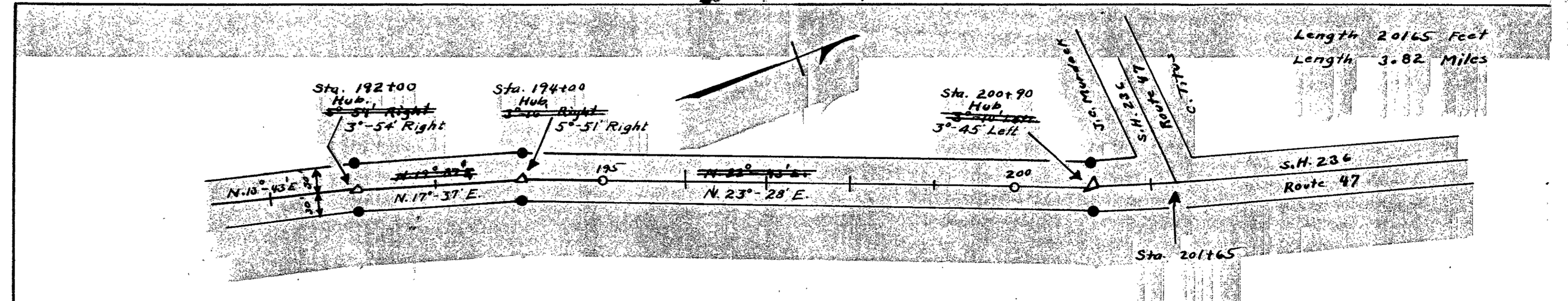
Surveyed By E.F. Wright 1934
Drawn By E.F. Wright 1934

1377
INDEXED ON MRP



Notes:-
Sta. 155 To 165
Error in Platting of 500'
No. Horses, Land Lines or
Angles

Concrete R/W Posts set as shown
Field notes Logan County Surveyors
Book No. 579



Length 2065 Feet
Length 3.82 Miles

Surveyed by E.F. Wright 1934
Drawn by E.F. Wright 1934