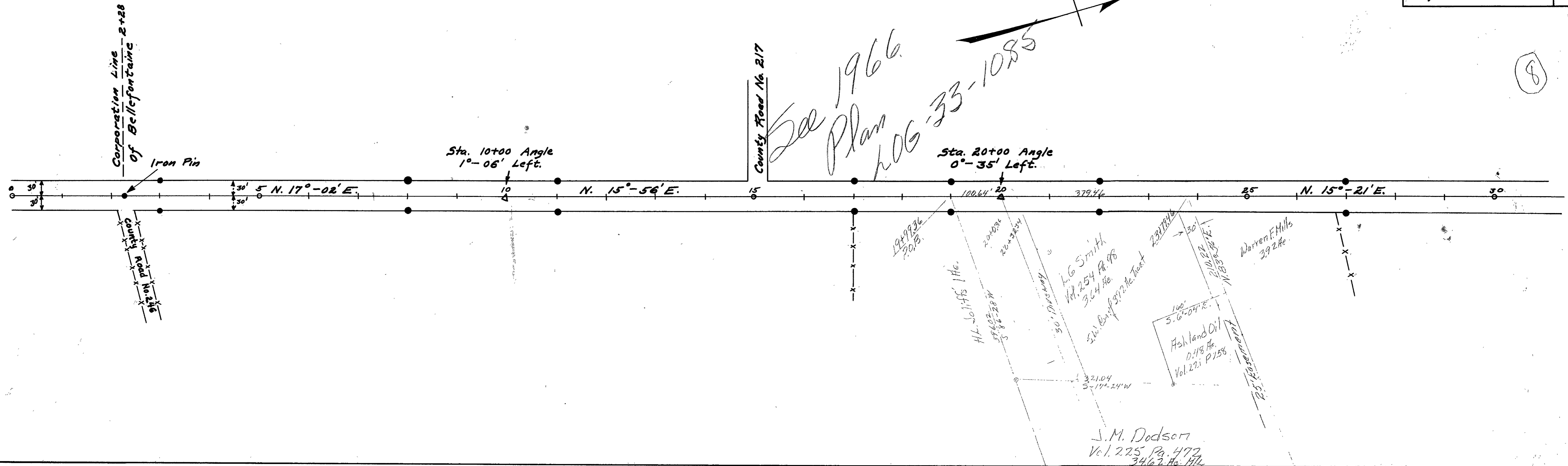


● Indicates R/W Monuments.

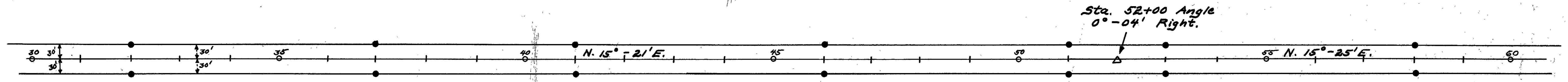
81-7

81-7

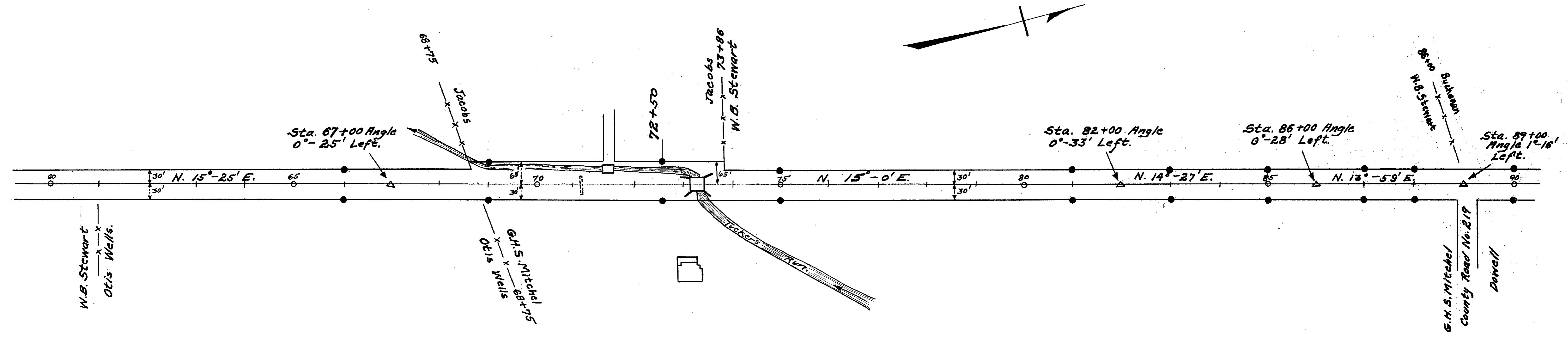


Field Notes Book 520
Logan County Surveyor's
Office

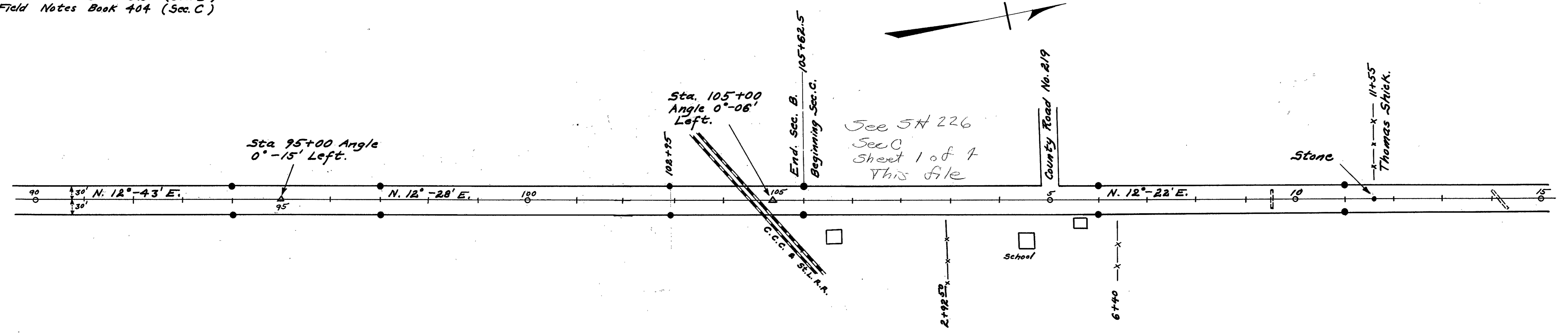
Bridge
1068-100
near Sta. 43
R.M. at 41846



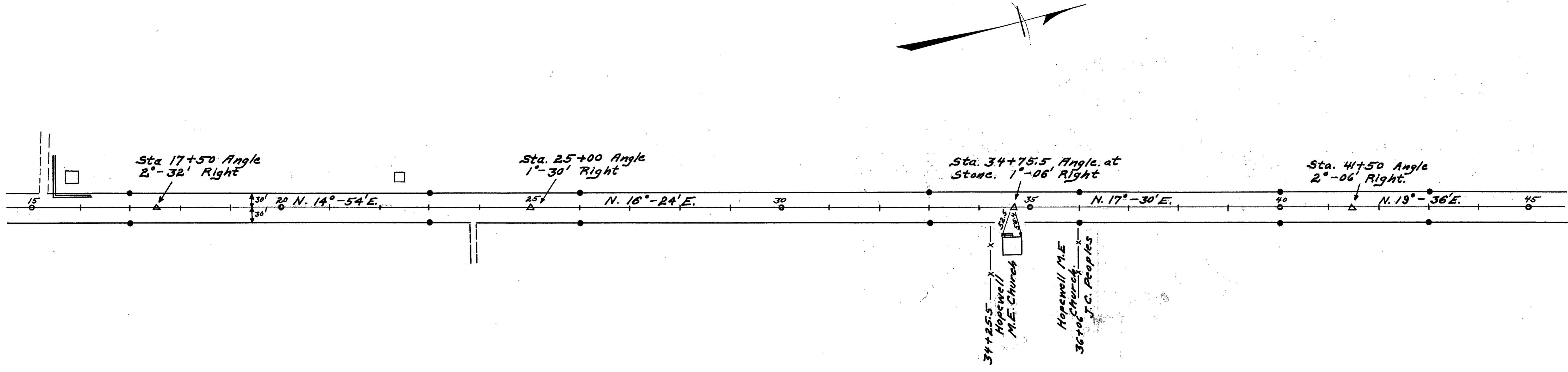
● Indicates R/W Monuments.



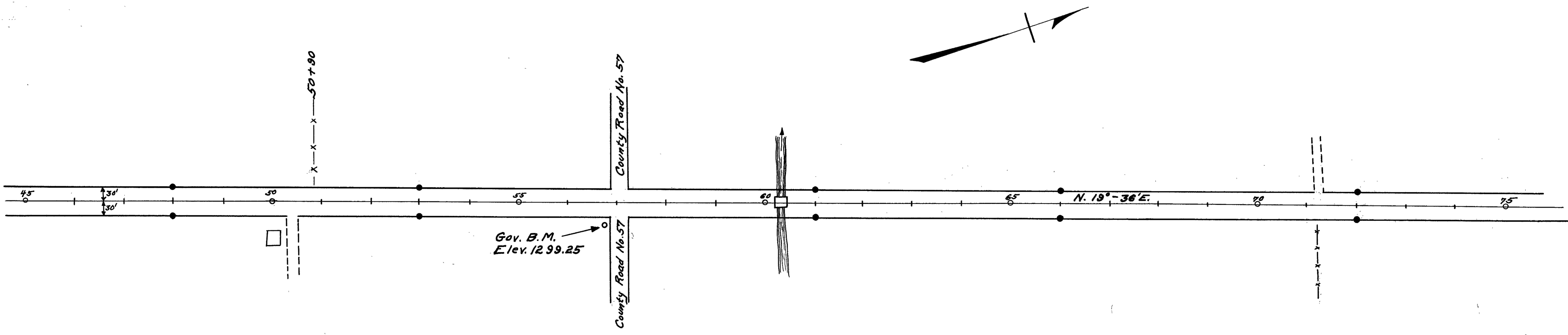
Field Notes Book 520 (Sec. B)
 Field Notes Book 404 (Sec. C)



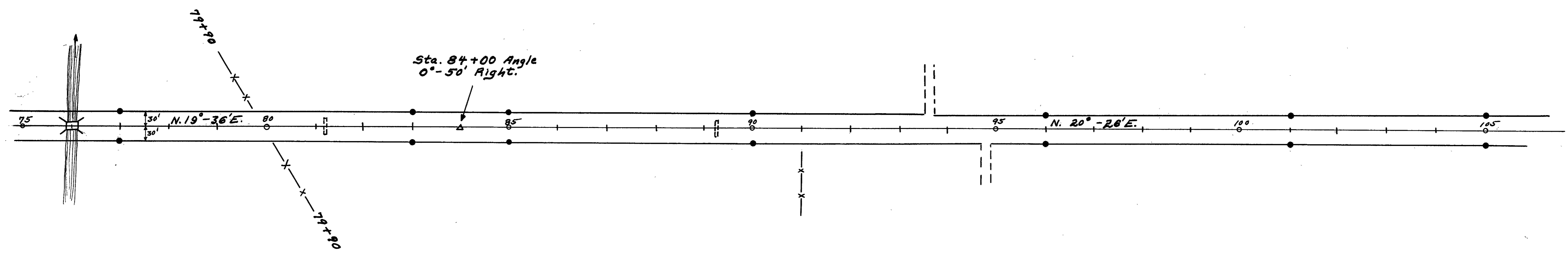
• Indicates R/W Monuments.



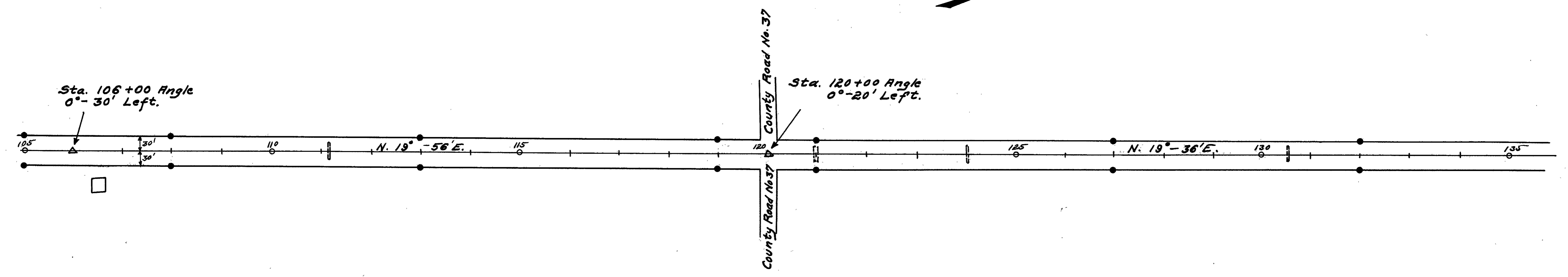
Field Notes Book 404



• Indicates R/W Monuments.

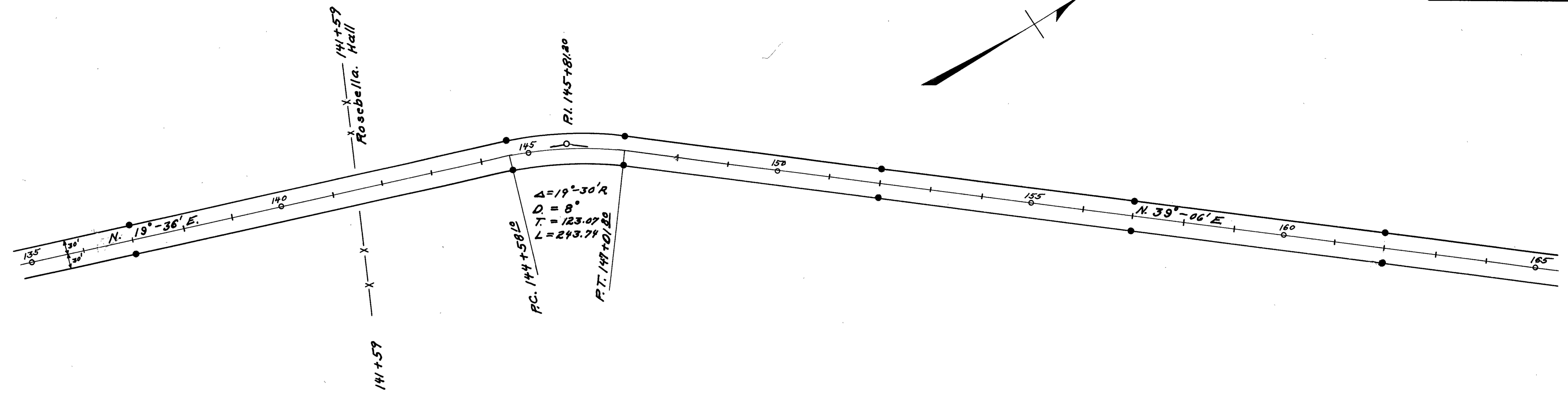


Field Notes Book 404

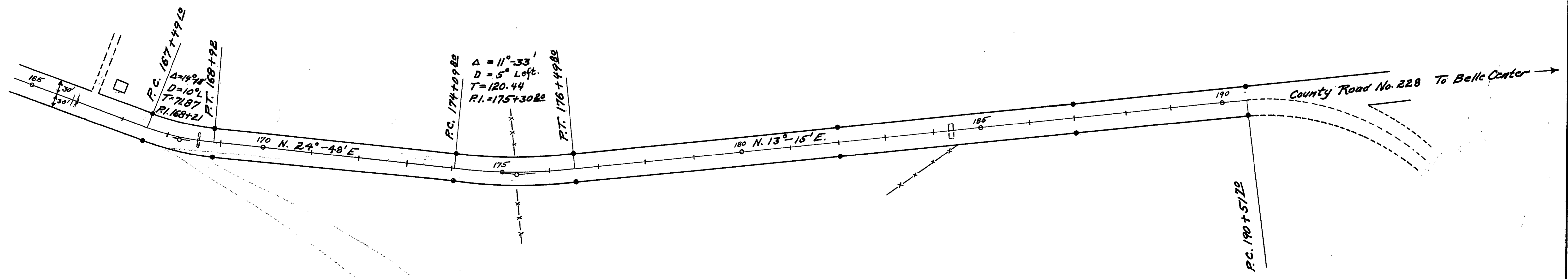


8-17

● Indicates R/W Monuments



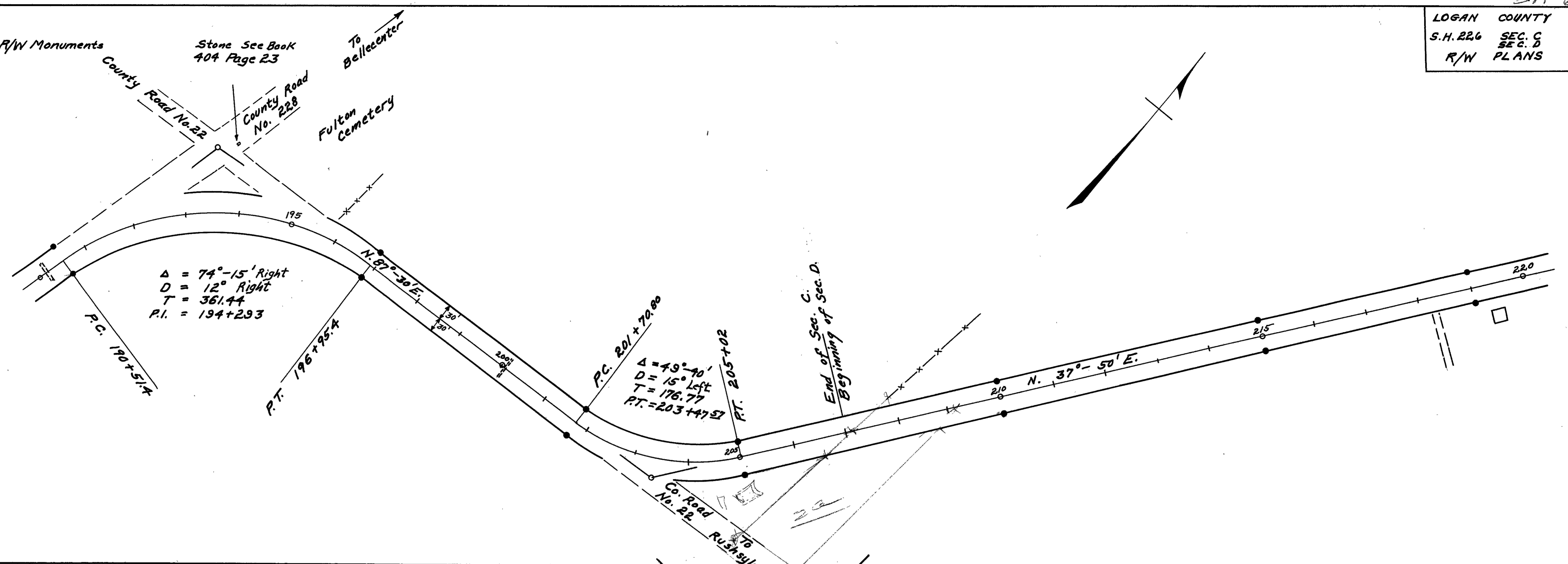
Field Notes Book 404



0-78

• Indicates R/W Monuments

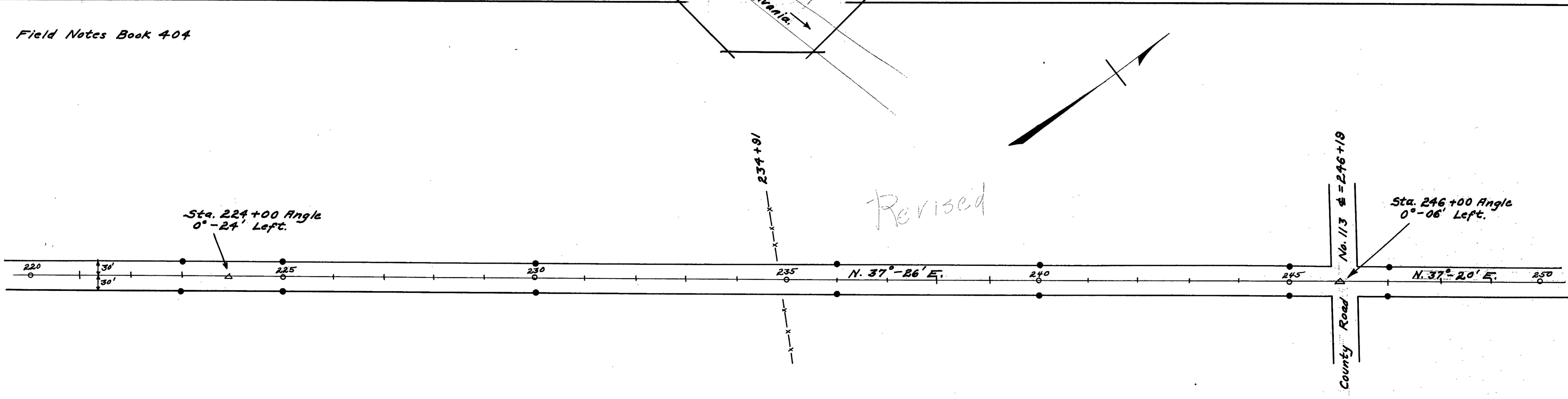
Stone See Book 404 Page 23



To Bellecenter
Fulton Cemetery

End of Sec. C.
Beginning of Sec. D.

Field Notes Book 404



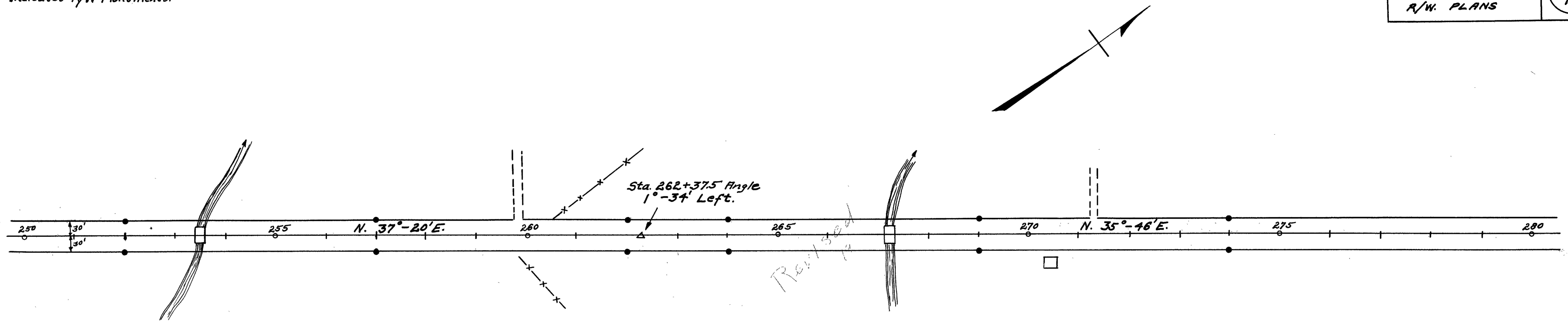
Revised

SR-68

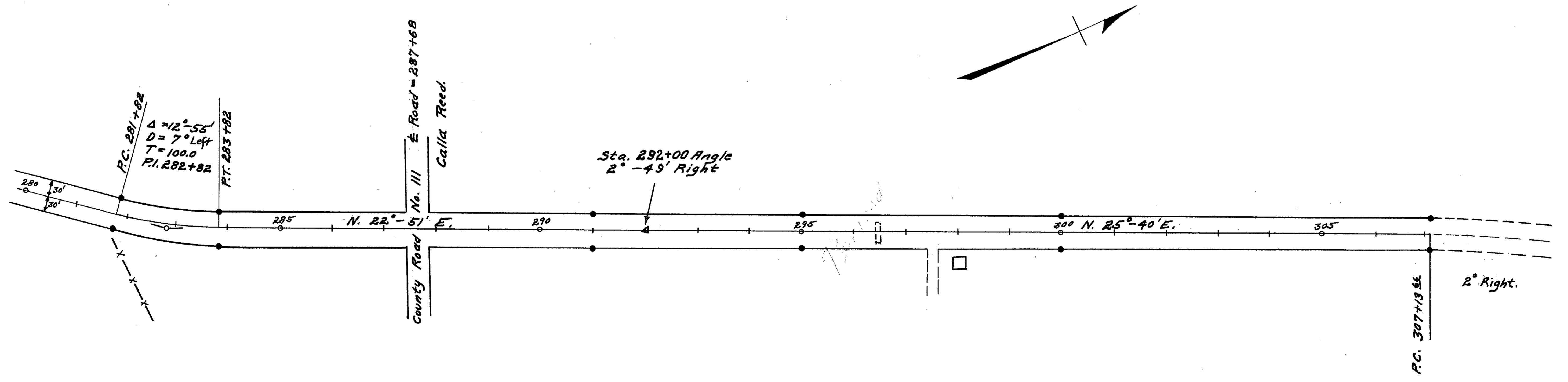
LOGAN COUNTY
S.H. 226 SEC. D
R/W PLANS

7
10

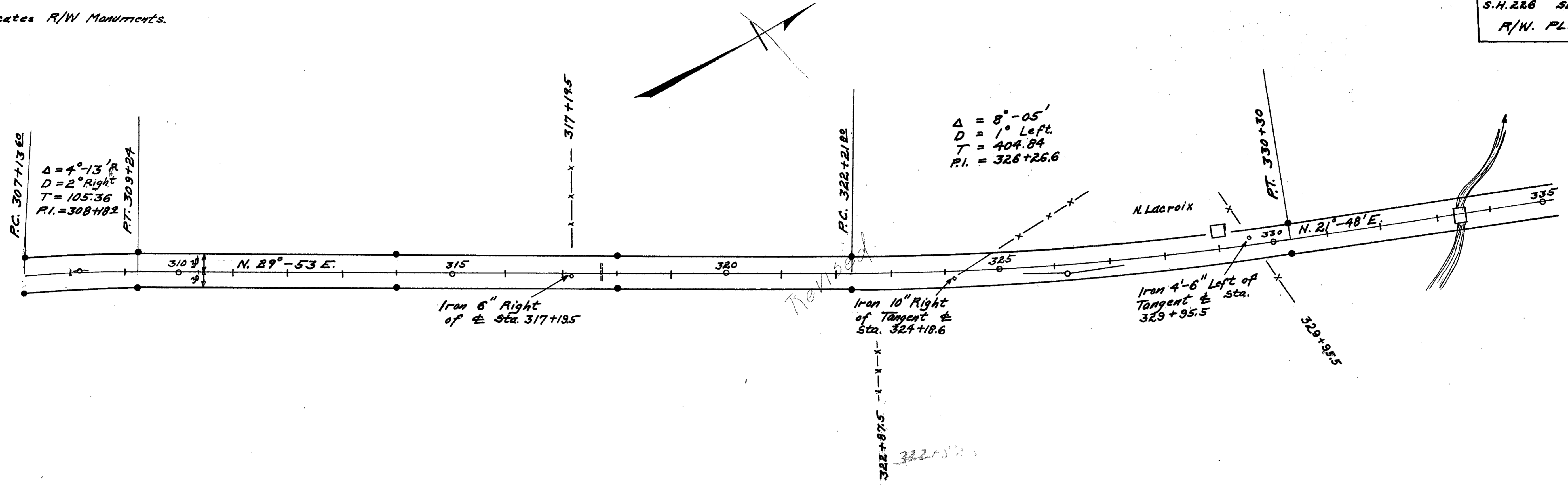
● Indicates R/W Monuments.



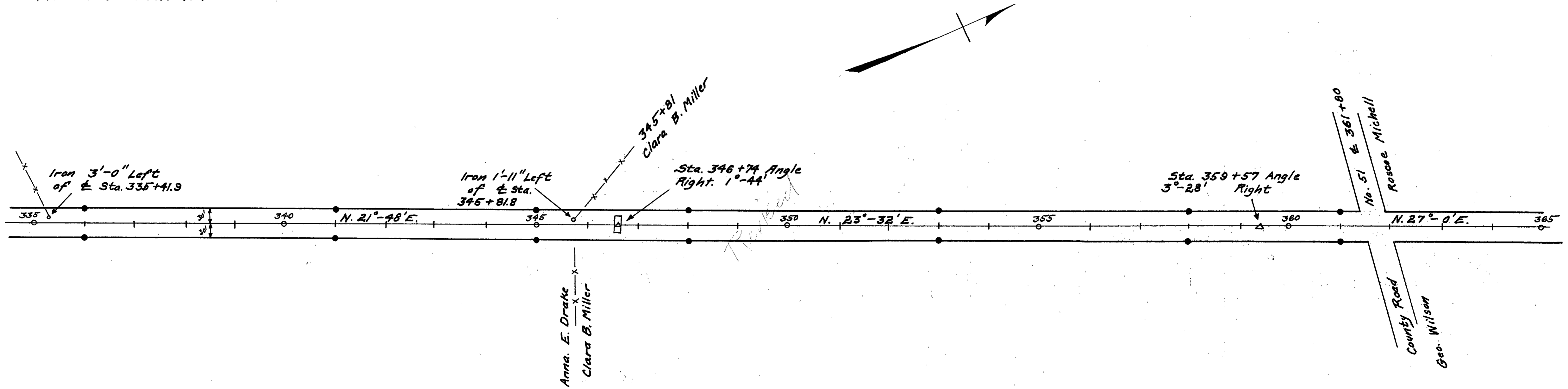
Field Notes Book 404



• Indicates R/W Monuments.



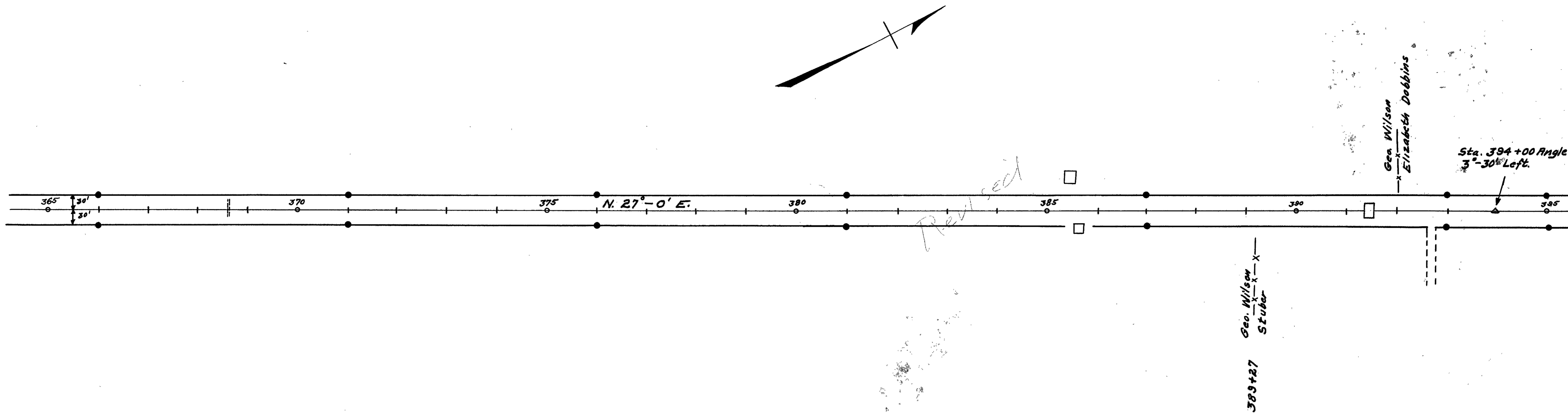
Field Notes Book 404



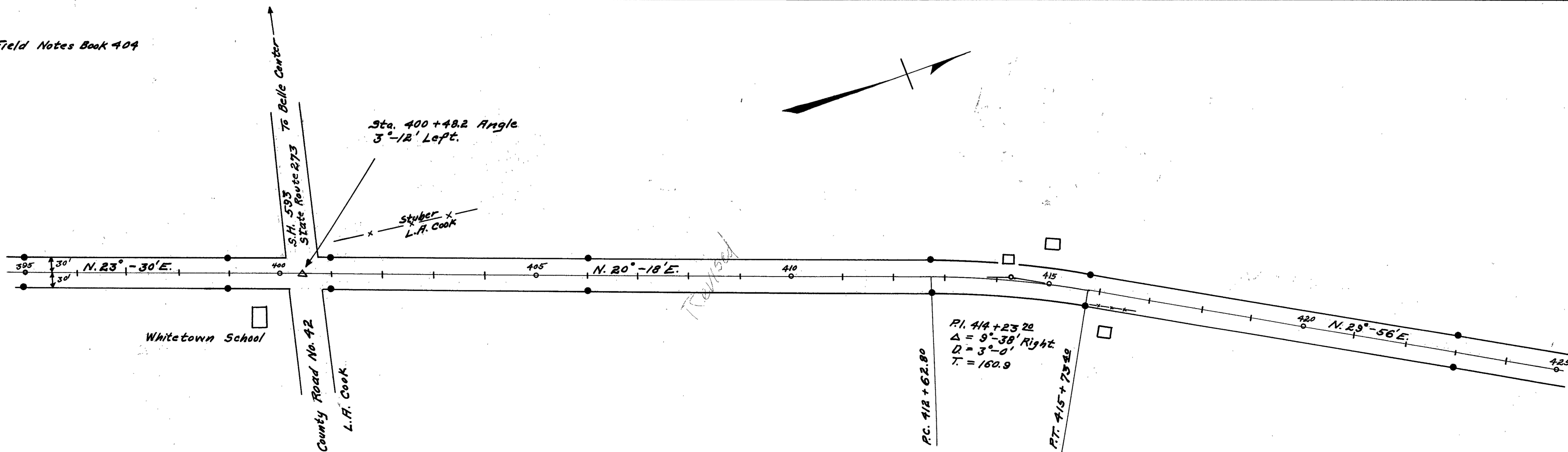
● Indicates R/W Monuments

LOGAN COUNTY
S.H. 226 SEC. D
R/W PLANS

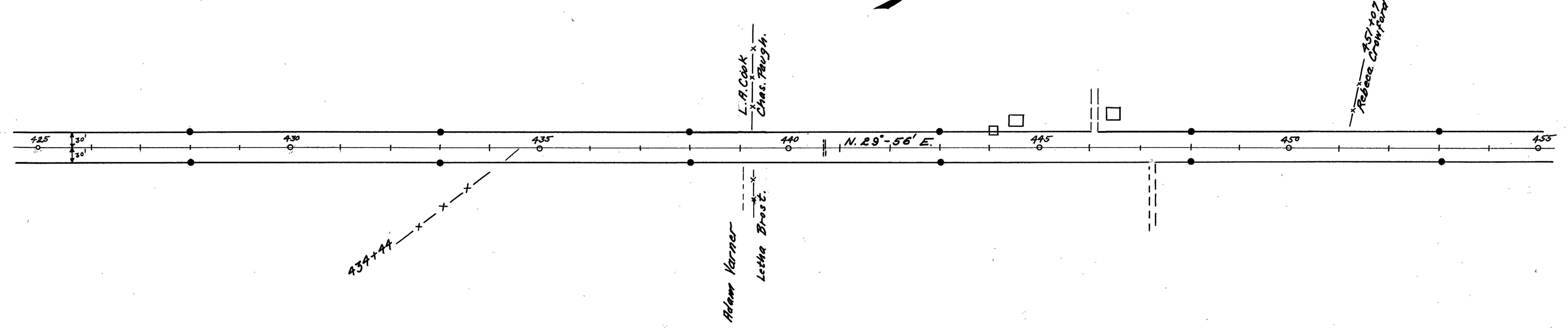
9
10



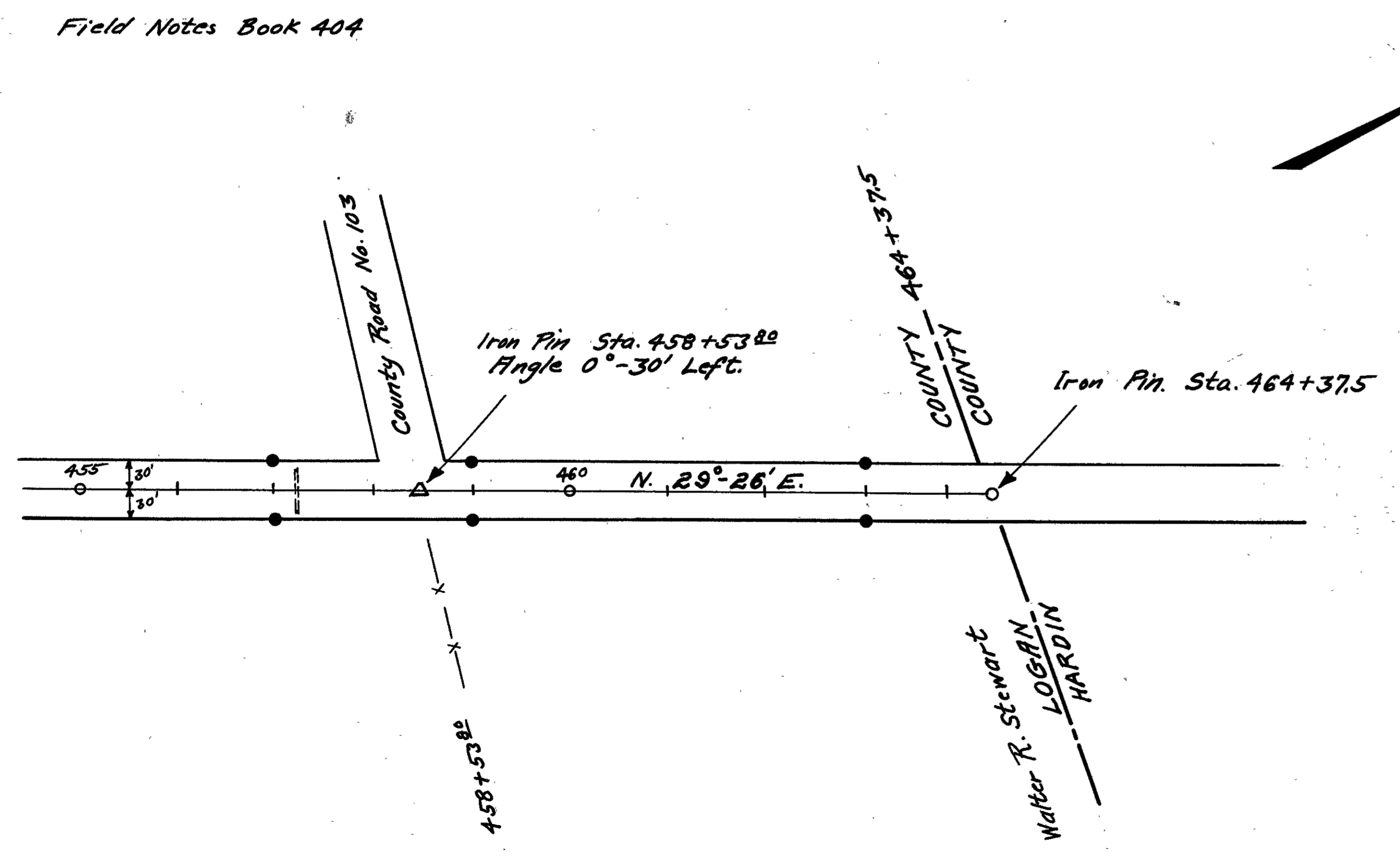
Field Notes Book 404



• Indicates R/W Monuments



Field Notes Book 404



105 + 62.5 Sec. B
464 + 37.5 Sec. C. & Sec. D
570 + 00.0 = 10.7954 Miles