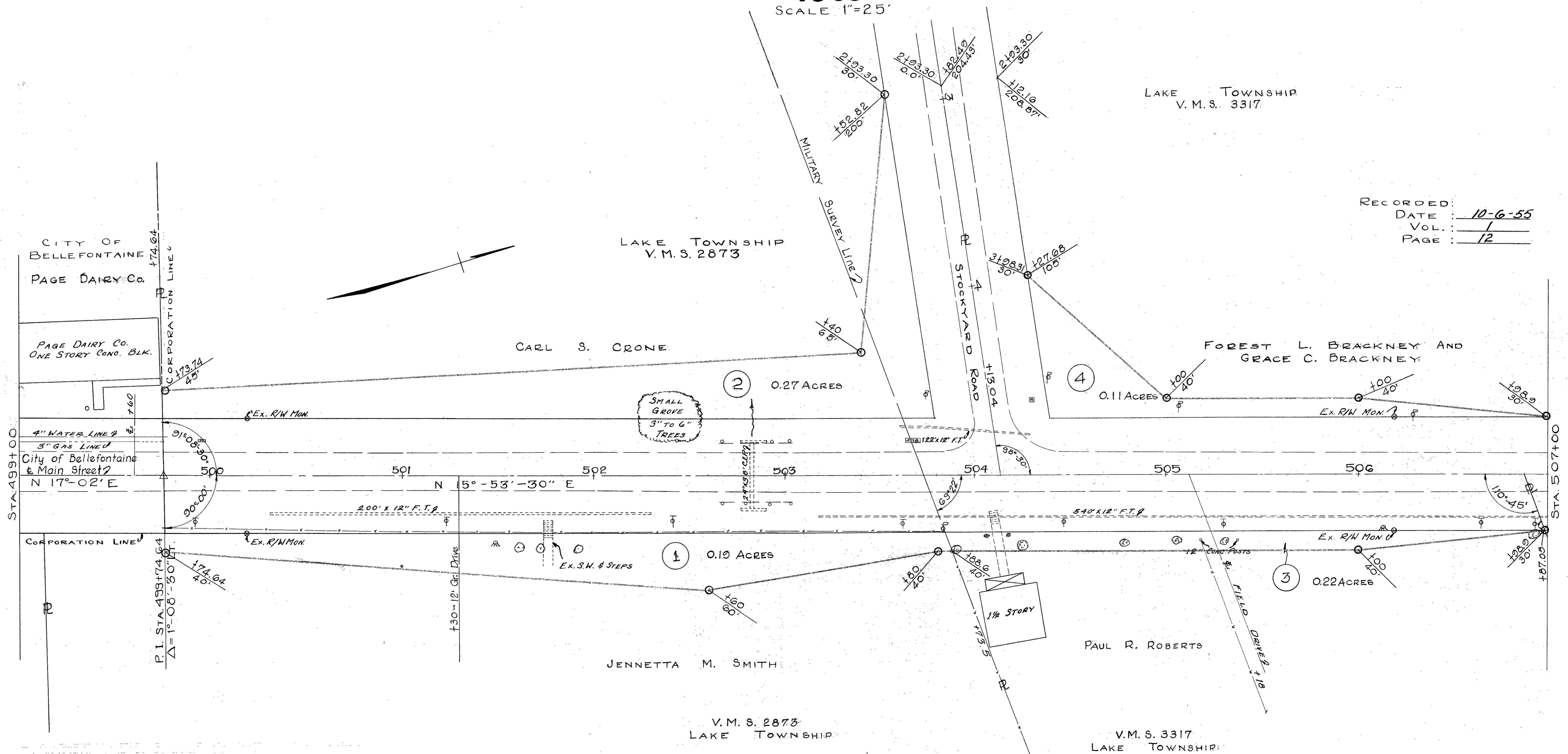


LOCATION & RIGHT OF WAY PLAN UNITED STATES ROUTE 68 BELLEFONTAINE-KENTON ROAD

1955
SCALE 1"=25'

FED. RD. DIVISION	STATE	PROJECT	
2	OHIO		

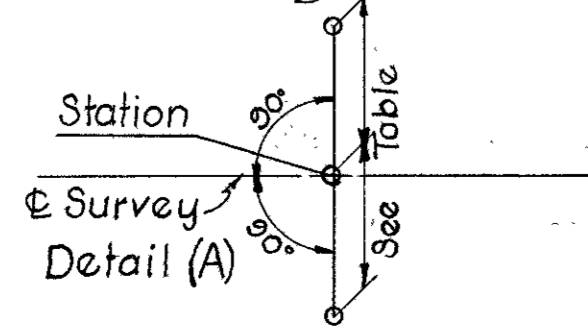
LOGAN COUNTY
LOG. 68 9.27-9.46
R/W PLANS



RECORDED:
DATE: 10-6-55
VOL.: 1
PAGE: 12

REFERENCE POINTS TO BE SET AFTER CONSTRUCTION
Completed 12-17 1956 By Theodore Craig

STATION	DISTANCE FROM	
	RE.	LT.
500+00	25'	25'
505+00	20'	20'
See Detail (A)		



APPROVED BY *Joe M. Bowen*
DATE 9 Sept 1955
RIGHT OF WAY ENGINEER FOR DIV. NO. 7
REGISTERED SURVEYOR NO. 3128
monuments Pasted