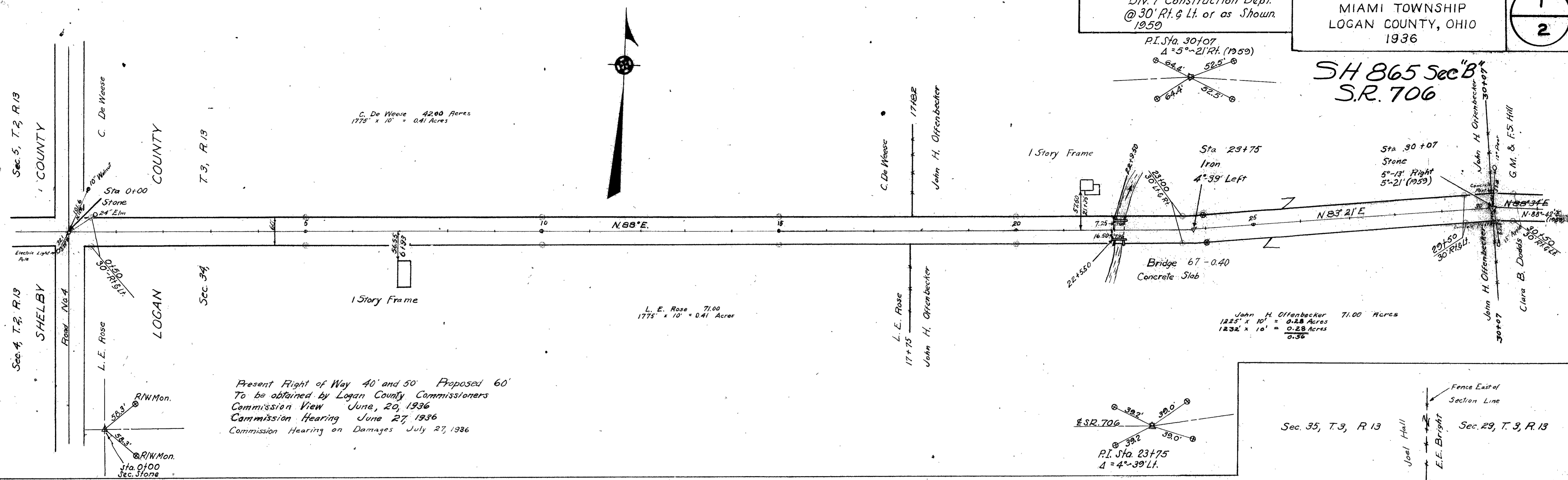


NOTE: R/W Monuments Set By
Div. 7 Construction Dept.
@ 30' Rt. & Lt. or as Shown
1959

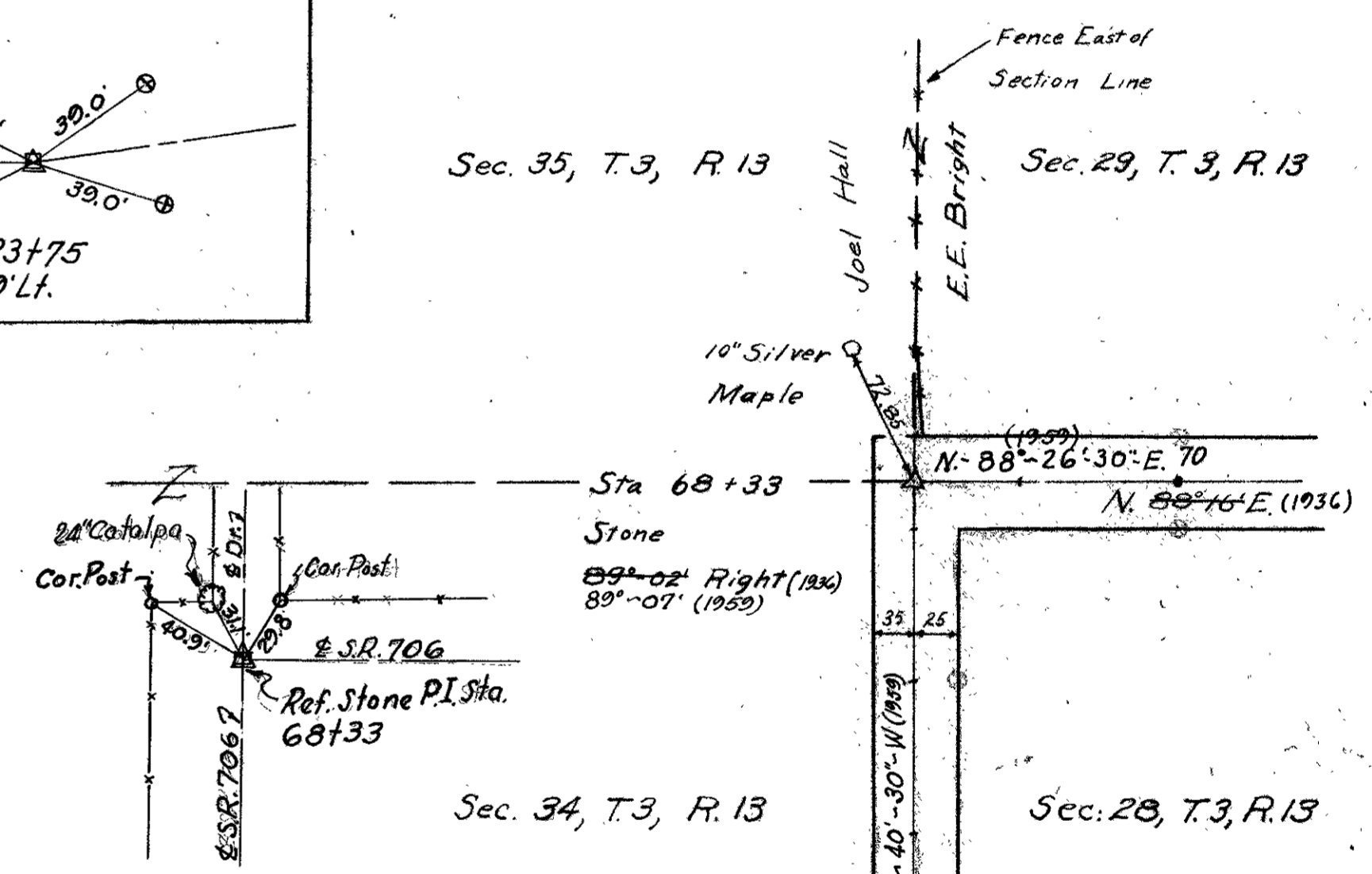
ROAD NO 67
MIAMI TOWNSHIP
LOGAN COUNTY, OHIO
1936

1
2

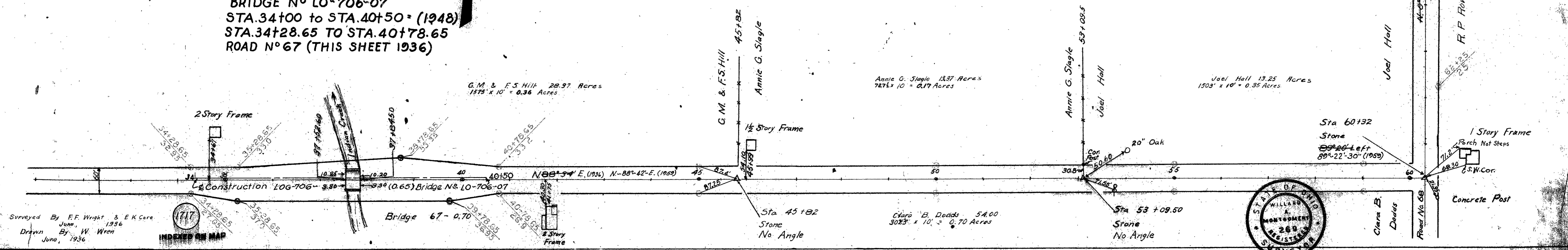
SH 865 Sec "B"
S.R. 706



Width 40' Commissioners Journal, Vol. 9, Page 151 and 294 (1850)
Miami Twp. Pike Record No. 3 Page 51, No width given (1866)
Sta. 68+32 to 68+33 is part of Indian Creek Pike and is 50' wide.
Pike Record 3, Page 507 (1874)
Field Notes Logan County Surveyor's Book 596, Pages 45 to 56.



SEE SHEET 1 of 1
LOG-706-0.65
BRIDGE NO LO-706-07
STA. 34+00 TO STA. 40+50 (1948)
STA. 34+28.65 TO STA. 40+78.65
ROAD NO 67 (THIS SHEET 1936)



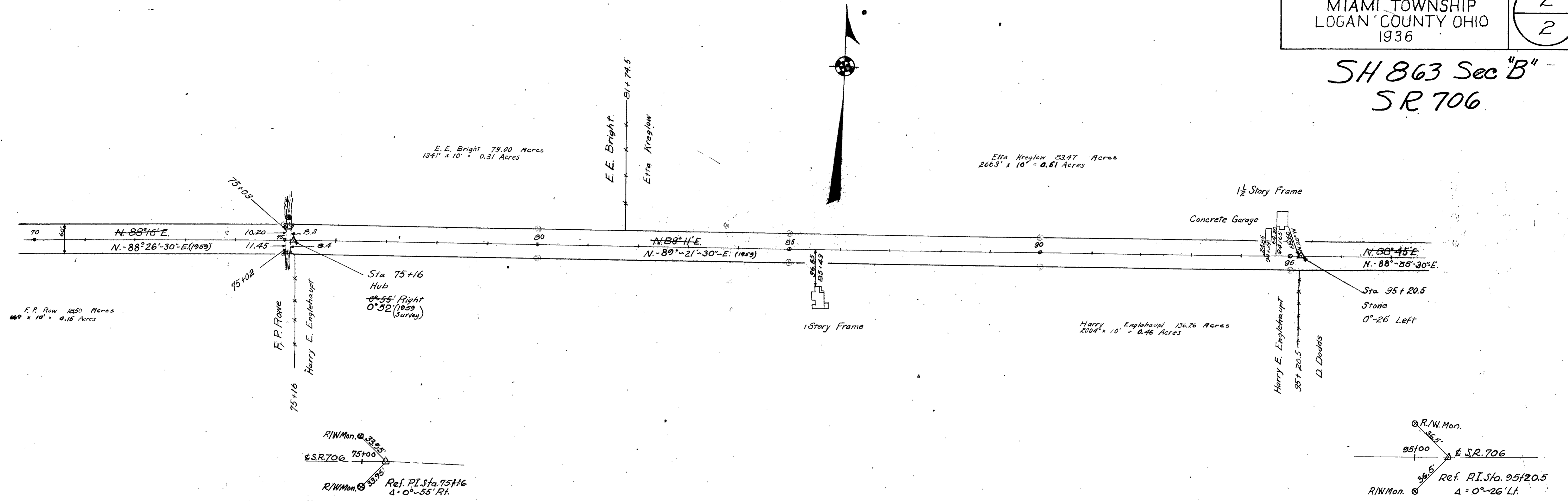
Surveyed By F.F. Wright & E.K. Core
June, 1936
Drawn By W. Wren
June, 1936



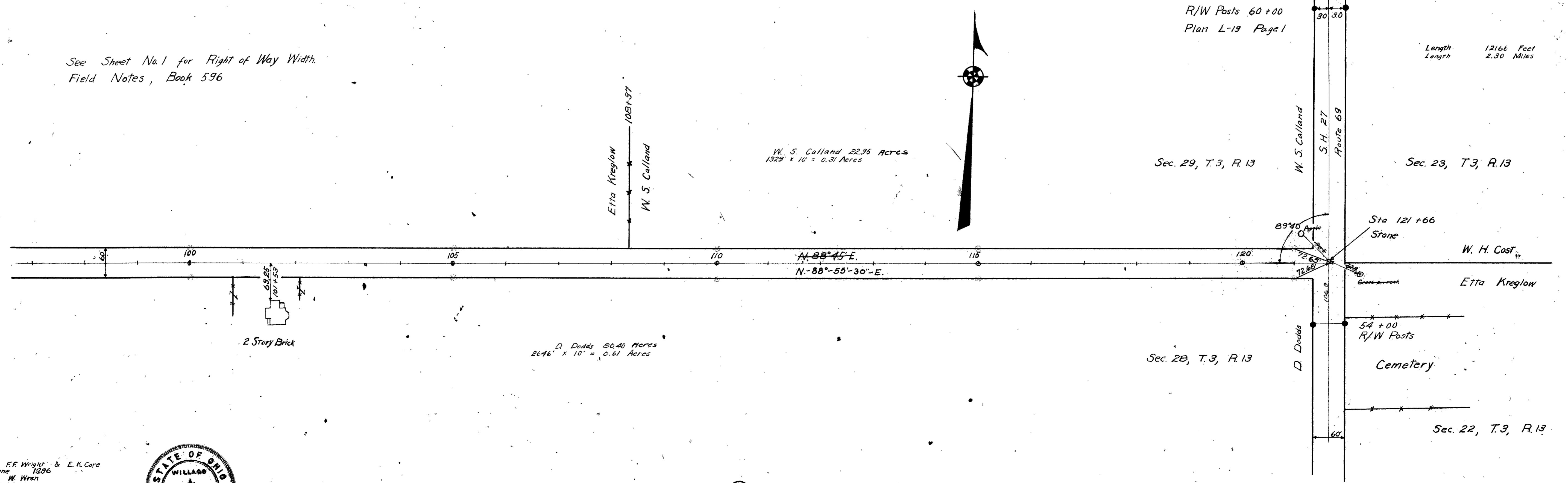
ROAD 67

X-27

SH 863 Sec "B"
SR 706



See Sheet No. 1 for Right of Way Width.
Field Notes, Book 596



Surveyed By F.F. Wright & E.K. Core
June 1936
Drawn By W. Wren
June 1936

